

Company	PALOMINO PETROLEUM, INC.	Company	PALOMINO PETROLEUM, INC.
Well	BEARCAT #1	Well	BEARCAT #1
Field	BEARCAT WEST	Field	BEARCAT WEST
County	GOVE	County	GOVE
State	KANSAS	State	KANSAS

Location:	API # : 15-063-22413-0000	Other Services
	330' FNL & 330' FWL	
	SEC 15 TWP 15S RGE 26W	
Permanent Datum	GROUND LEVEL	Elevation 2431'
Log Measured From	KELLY BUSHING & A.G.L.	K.B. 2439'
Drilling Measured From	KELLY BUSHING	D.F. 2437'
		G.L. 2431'

Date	SEPT. 14, 2022
Run Number	ONE
Depth Driller	4420'
Depth Logger	4367'
Bottom Logged Interval	4366'
Top Log Interval	2700'
Open Hole Size	150'
Type Fluid	WATER
Density / Viscosity	///
Max. Recorded Temp.	129F
Estimated Cement Top	2800'
Time Well Ready	///
Time Logger on Bottom	///
Equipment Number	PT-09
Location	HAYS
Recorded By	BOB KLAUS
Witnessed By	RICHARD FREDERKING

Borehole Record				Tubing Record			
Run Number	Bit	From	To	Size	Weight	From	To
ONE	12.25"	0	223'				
TWO	7.875"	223'	4420'				

Casing Record		Size	Wgt/Ft	Top	Bottom
Surface String	8 5/8"			0	223'
Production String	5 1/2"		14#	0	4417'
Liner					

<<< Fold Here >>>

All interpretations are opinions based on inferences from electrical or other measurements and we cannot and do not guarantee the accuracy or correctness of any interpretation, and we shall not, except in the case of gross or willful negligence on our part, be liable or responsible for any loss, costs, damages, or expenses incurred or sustained by anyone resulting from any interpretation made by any of our officers, agents or employees. These interpretations are also subject to our general terms and conditions set out in our current Price Schedule.

Comments

THANK YOU FOR USING
PERF-TECH WIRELINE SERVICES, INC.
785-628-3969

DIRECTIONS: UTICA, Ks.
WEST side of town, NORTH on D Rd to COUNTY LINE,
1 WEST to 78 Rd, 3 1/2 NORTH, WEST into,
3 CATTLE GUARDS THEN NORTH to LOCATION

Database File: sept142209.db
 Dataset Pathname: pass4
 Presentation Format: 3x5
 Dataset Creation: Wed Sep 14 08:57:58 2022 by Log Std Casedhole 06040
 Charted by: Depth in Feet scaled 1:240

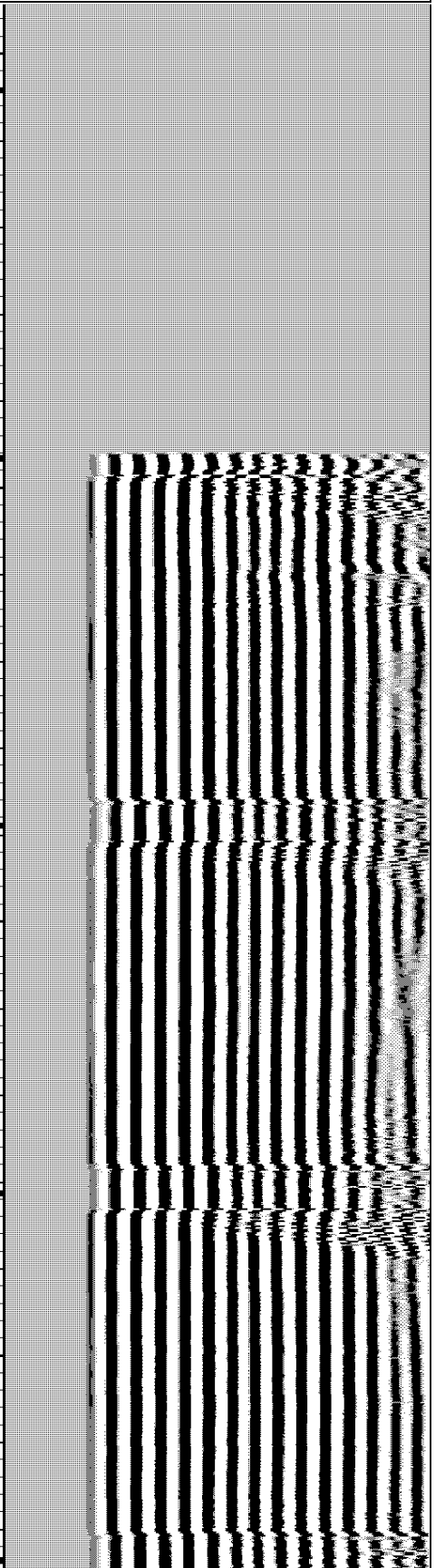
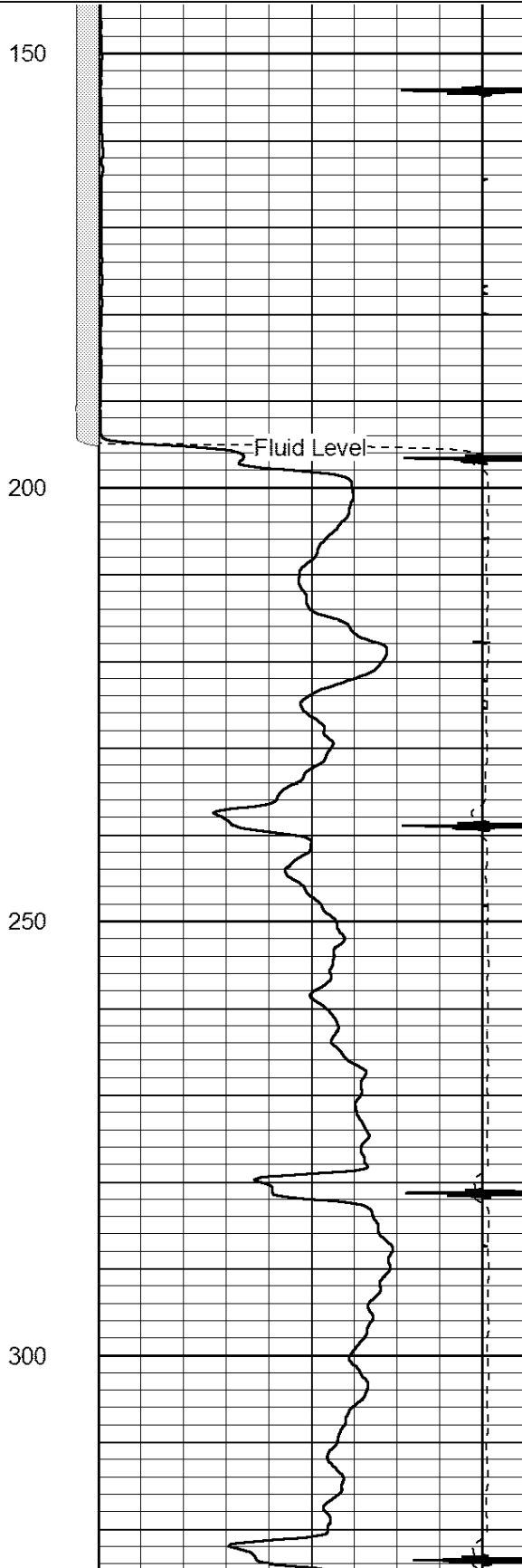
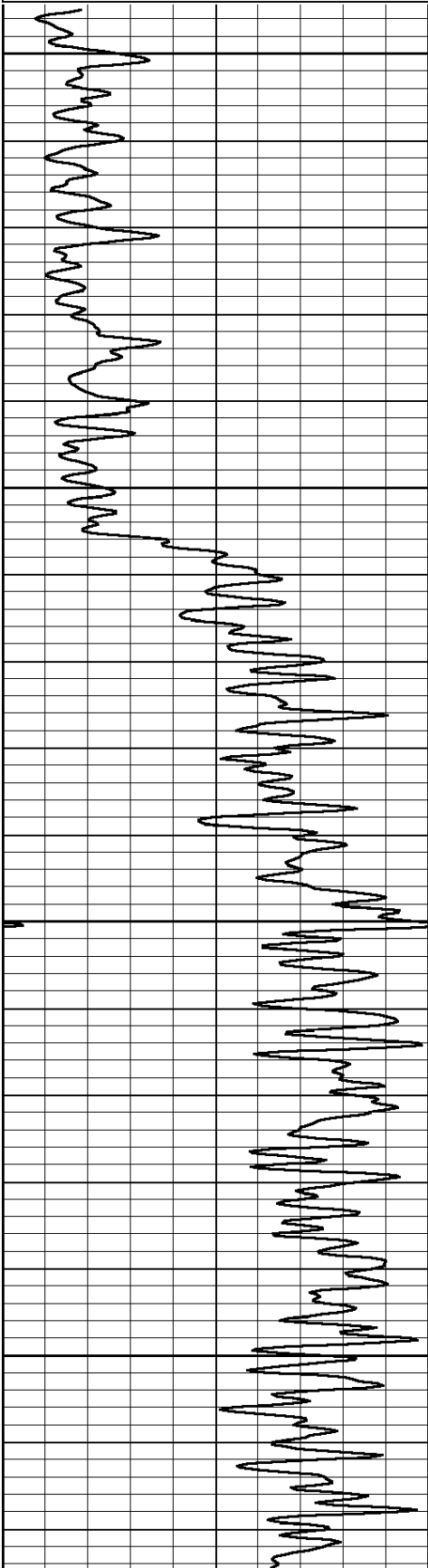
0 Gamma Ray (GAPI) 150

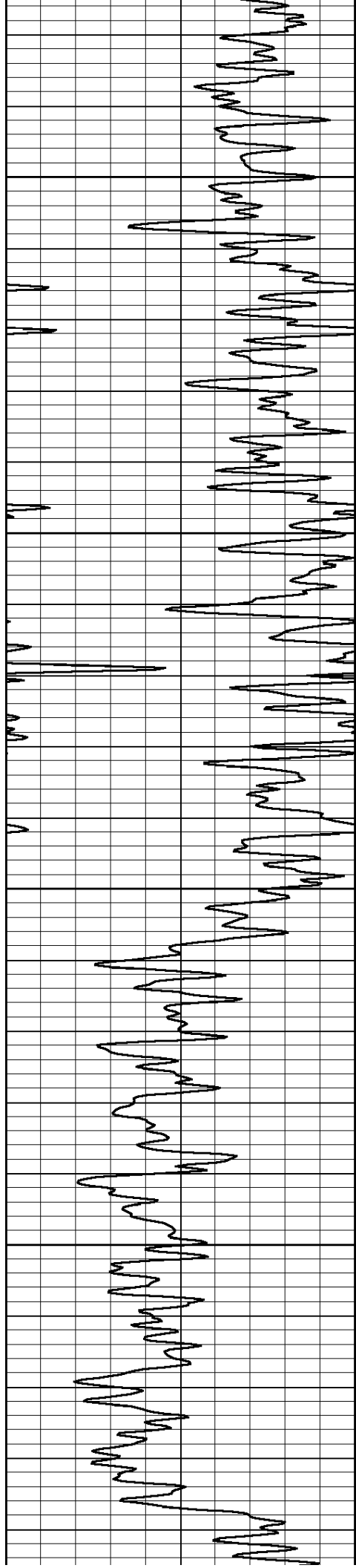
0 3' AMPLITUDE (mV) 100

200 5' Variable Density 1100

475 3' TRAVEL TIME (usec) 235

9 Collar Locator -1



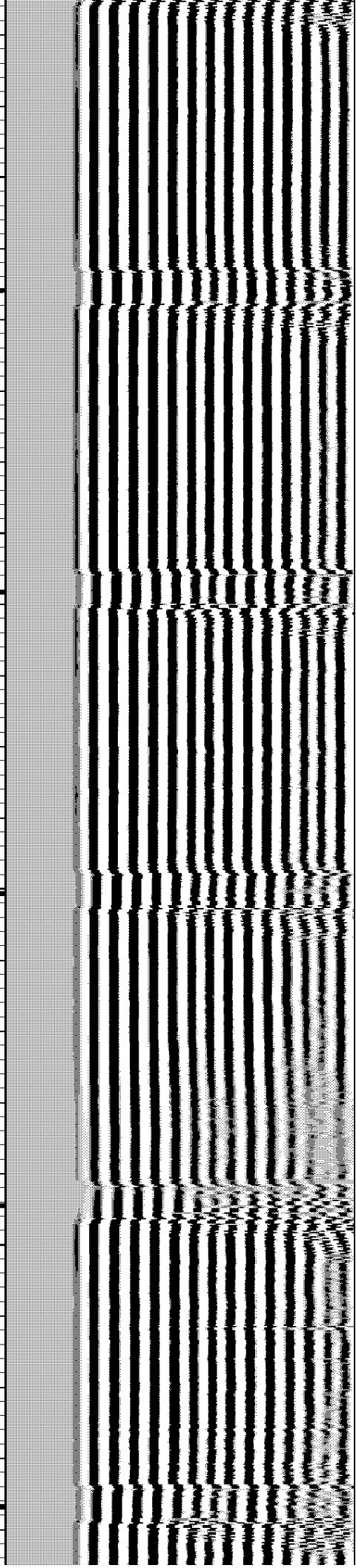
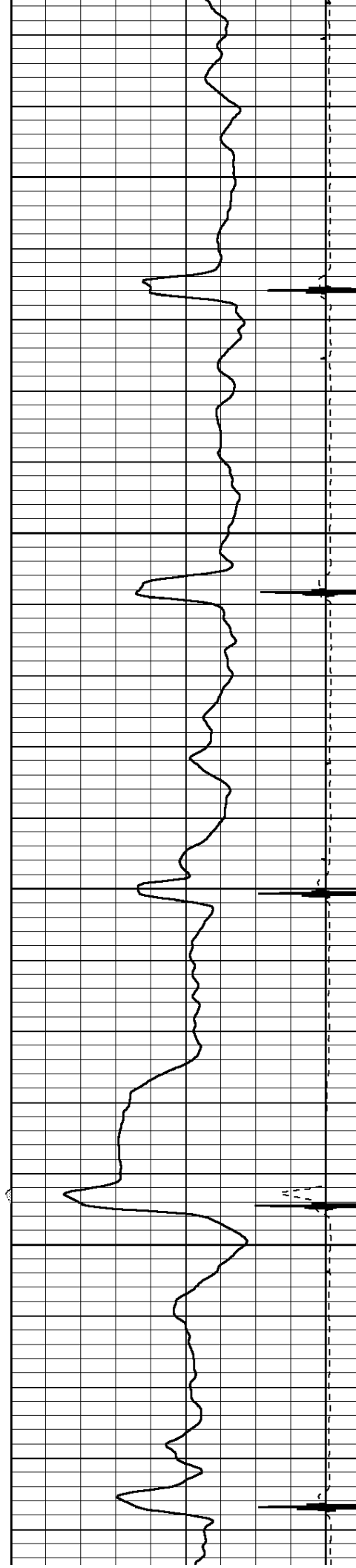


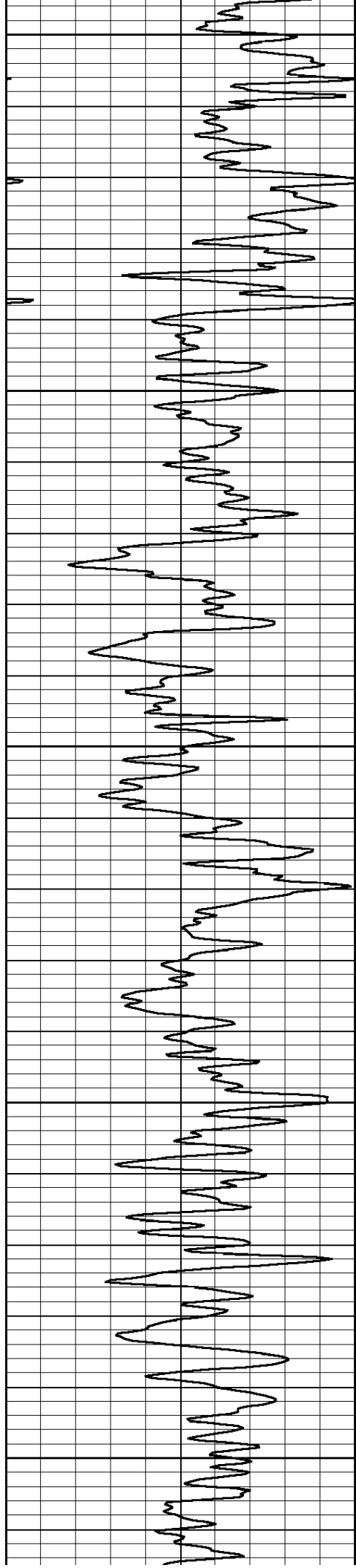
350

400

450

500





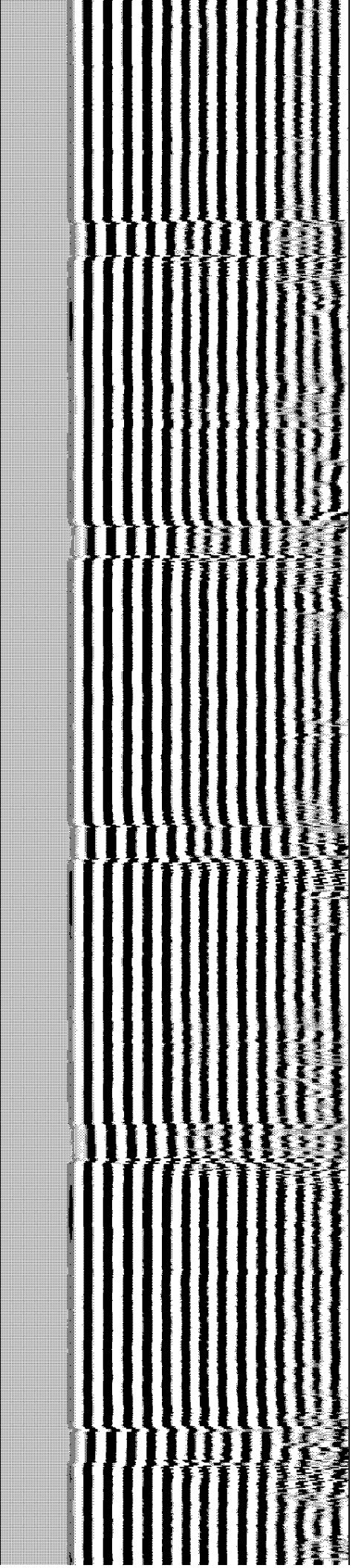
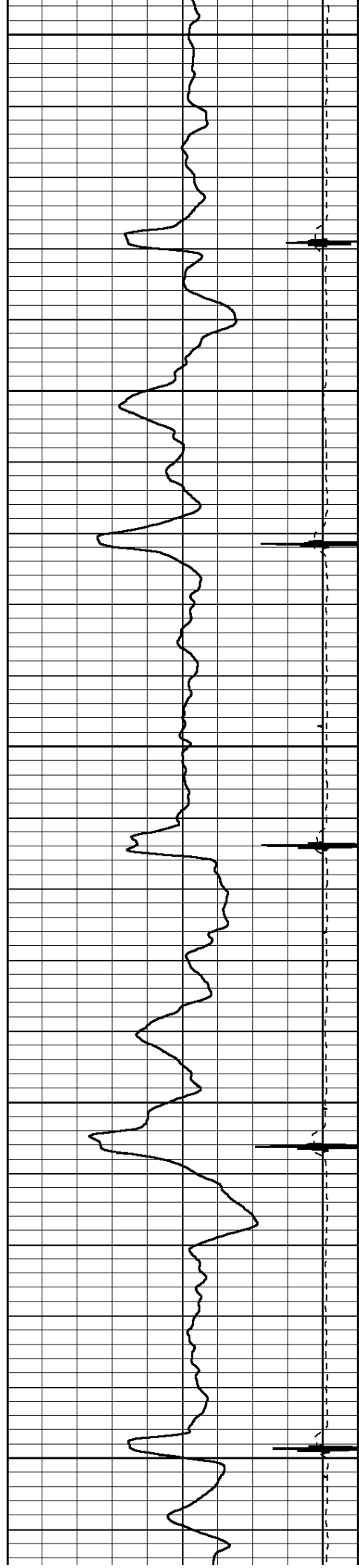
550

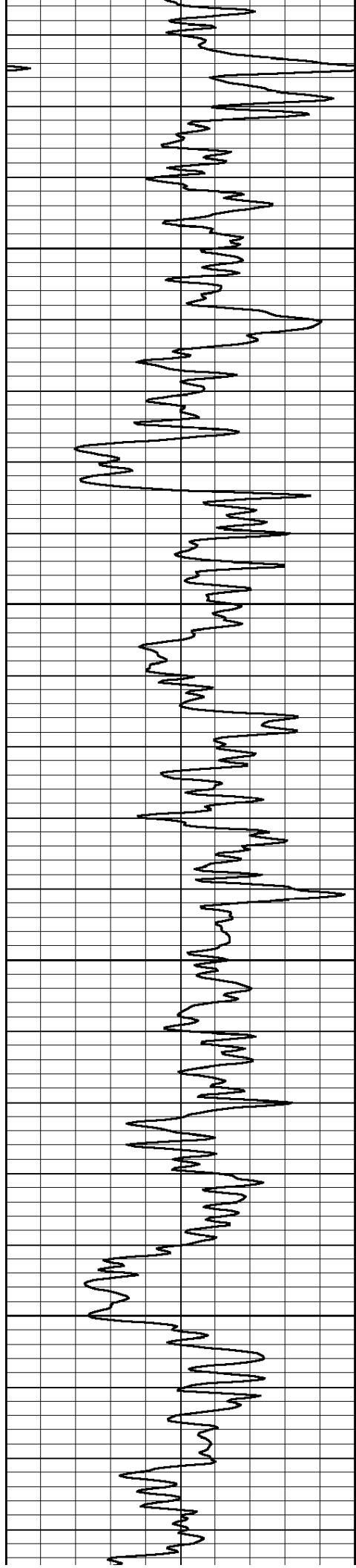
600

650

700

750



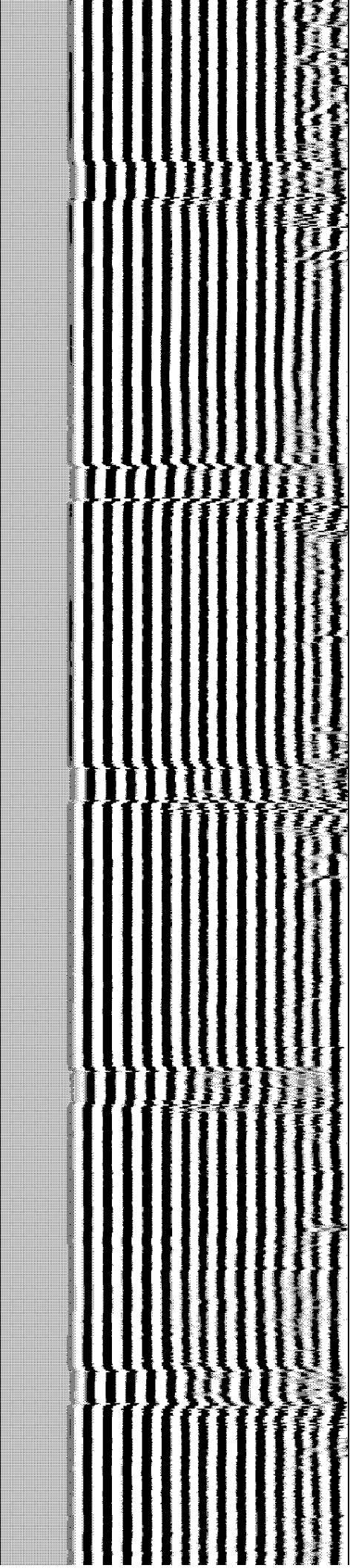
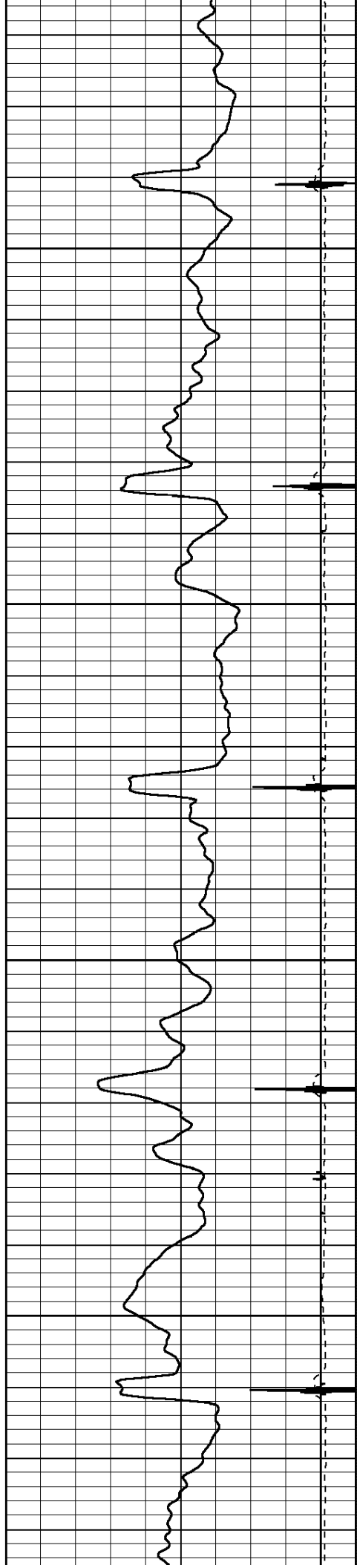


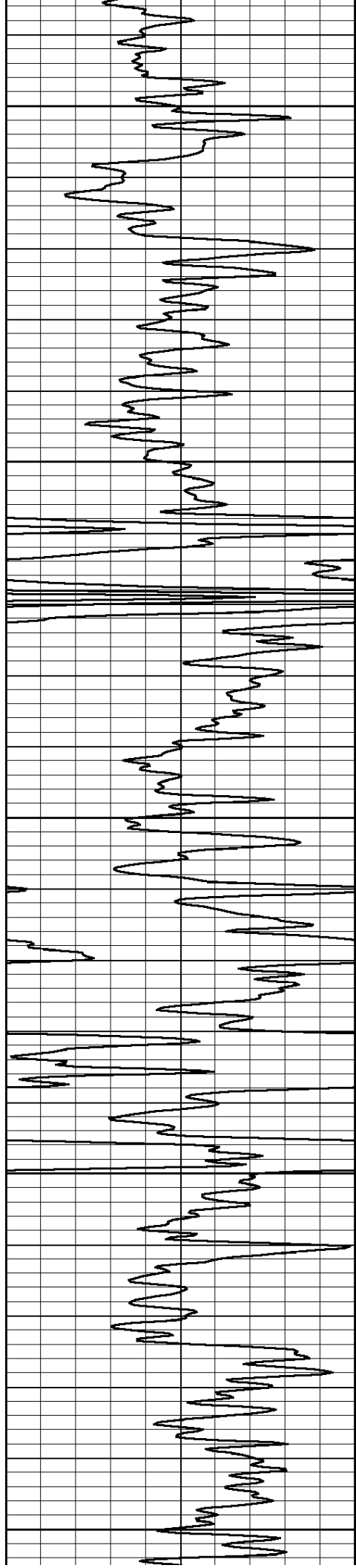
800

850

900

950





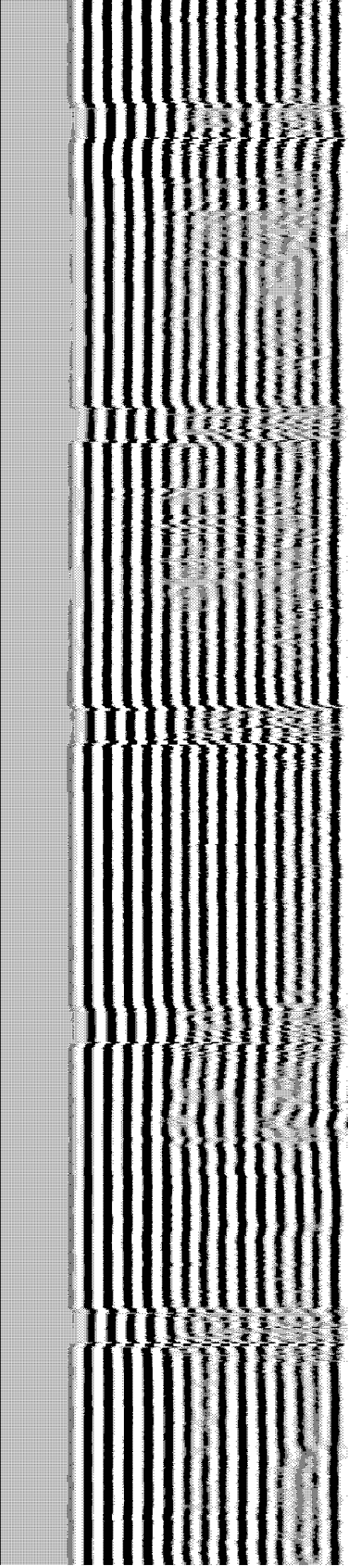
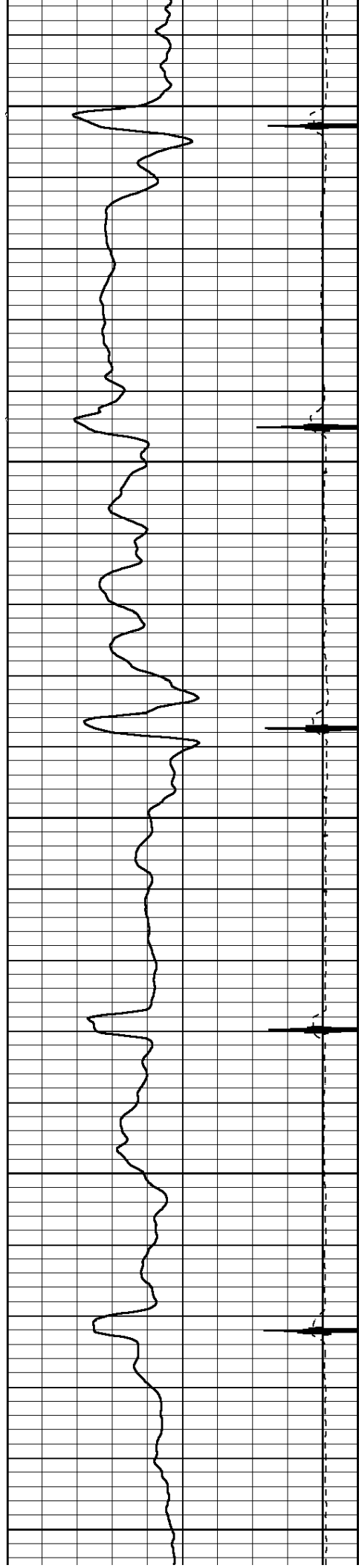
1000

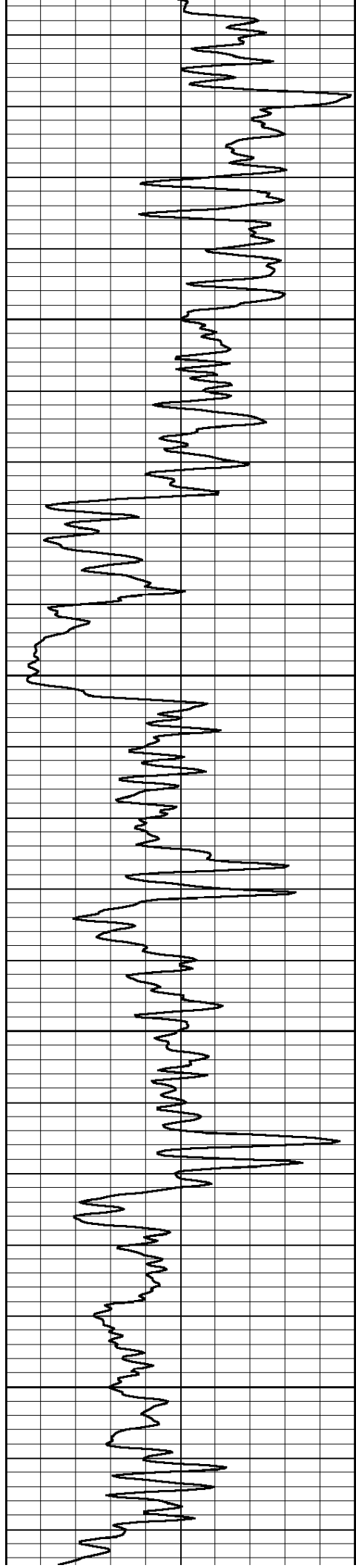
1050

1100

1150

1200



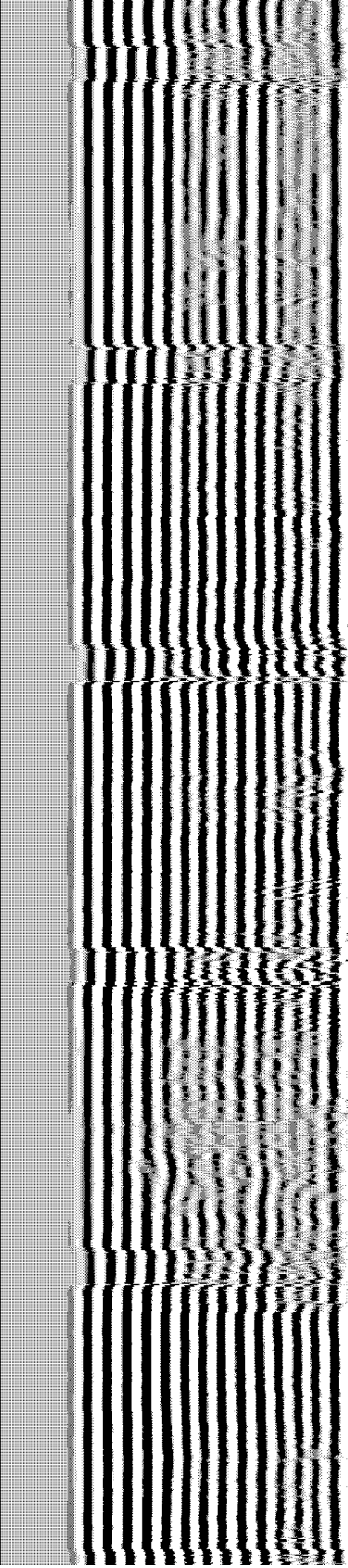
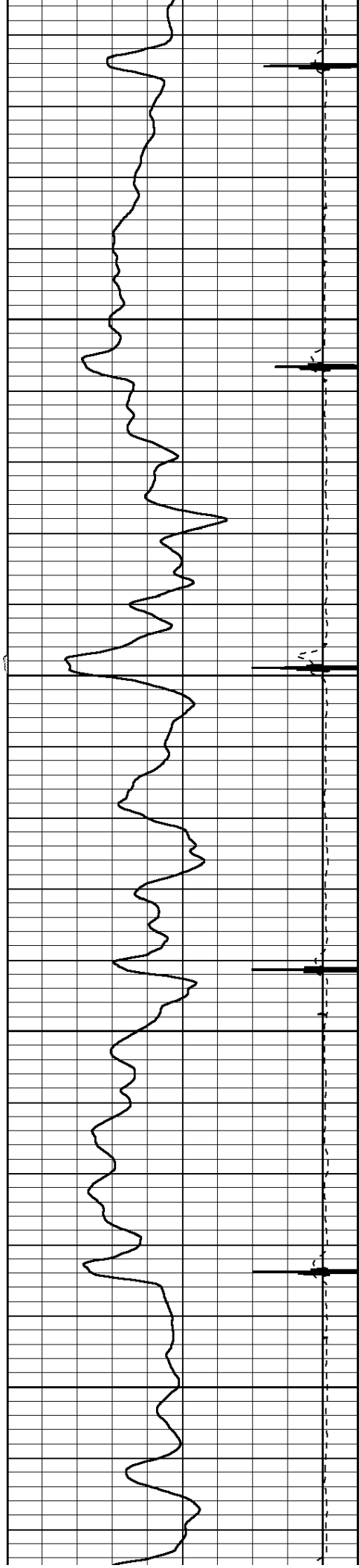


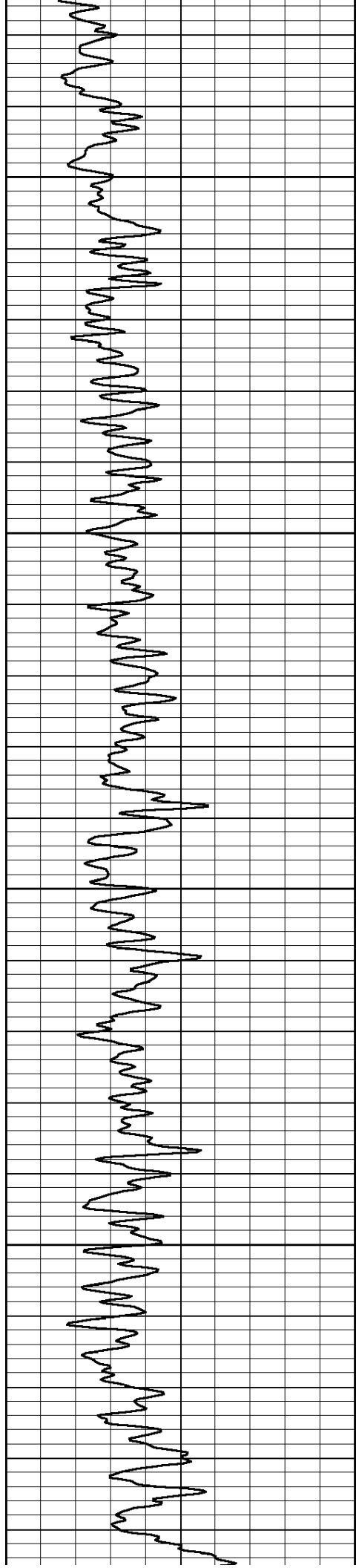
1250

1300

1350

1400



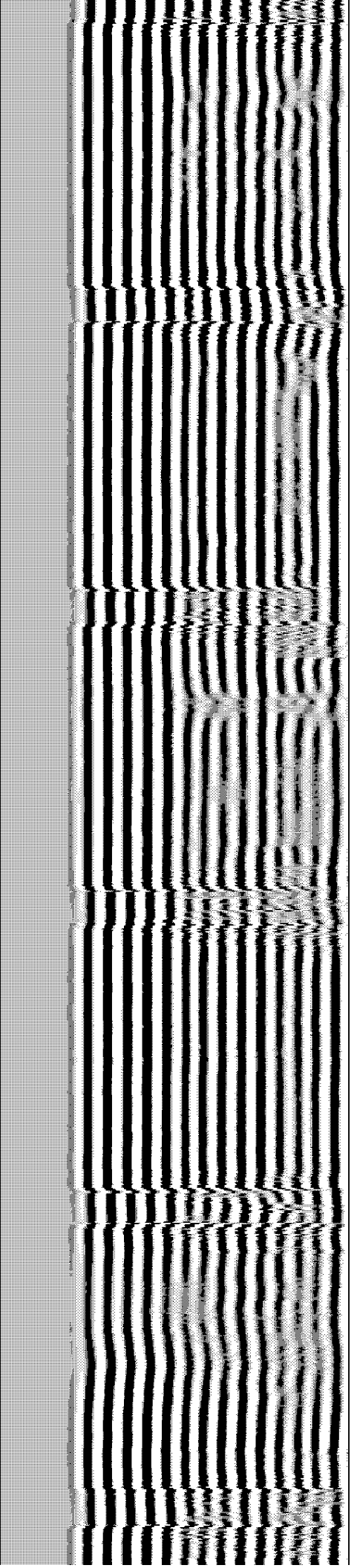
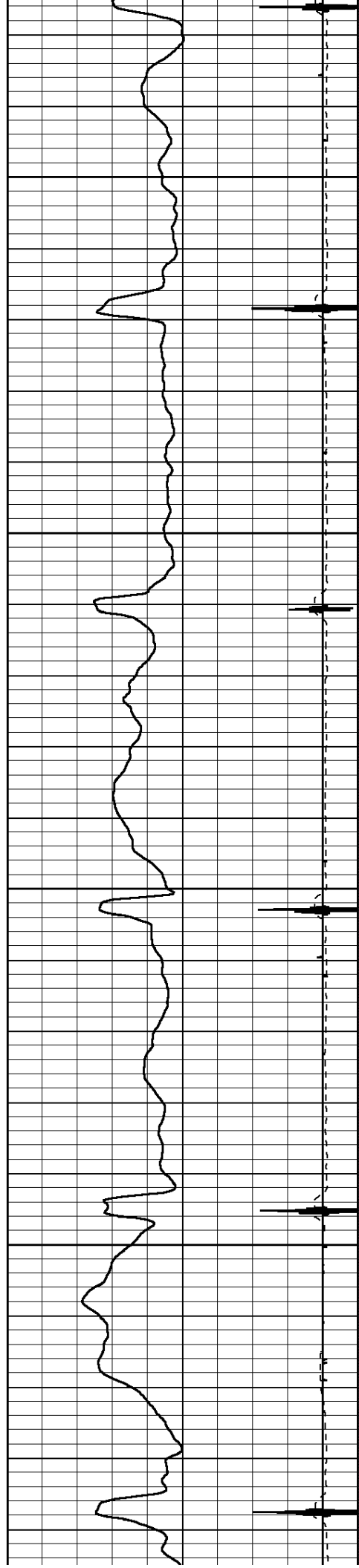


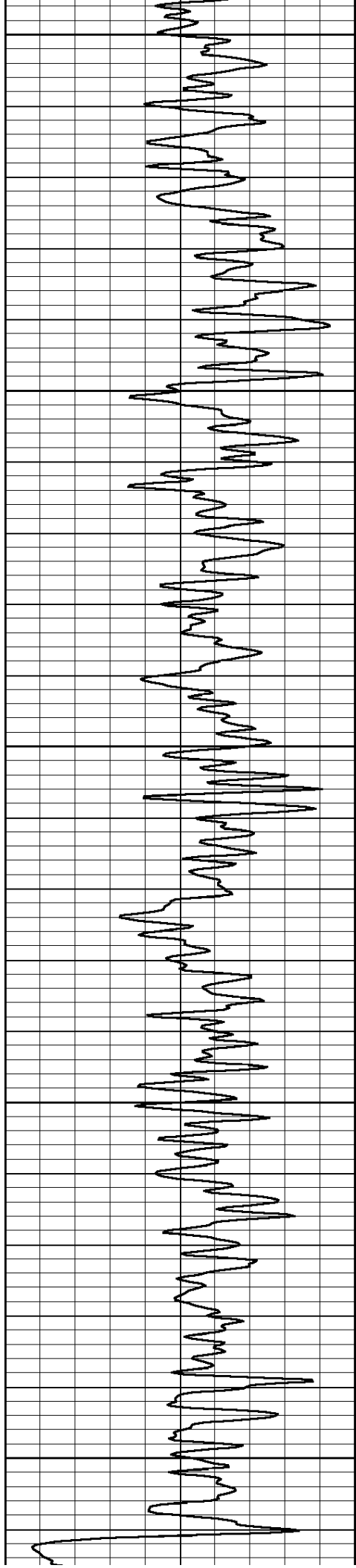
1450

1500

1550

1600





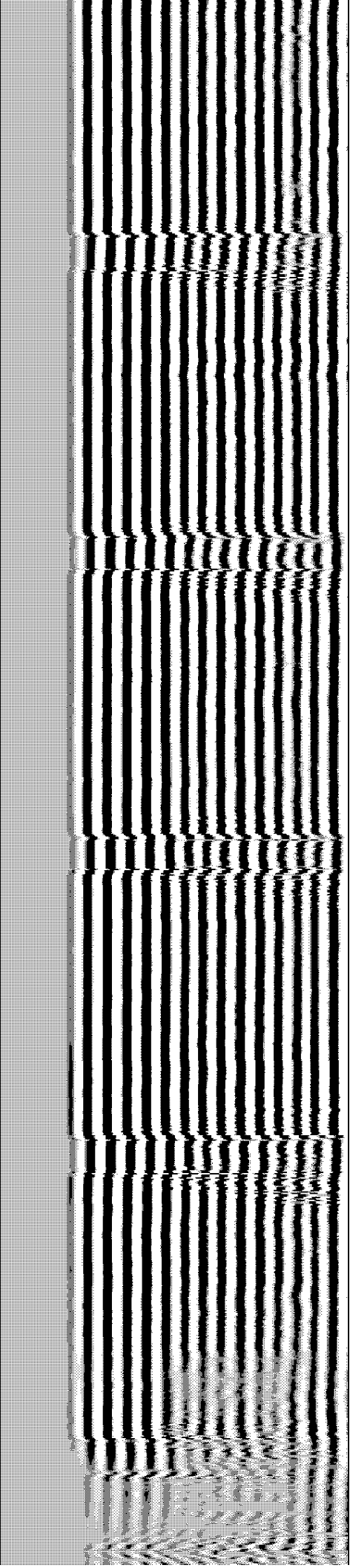
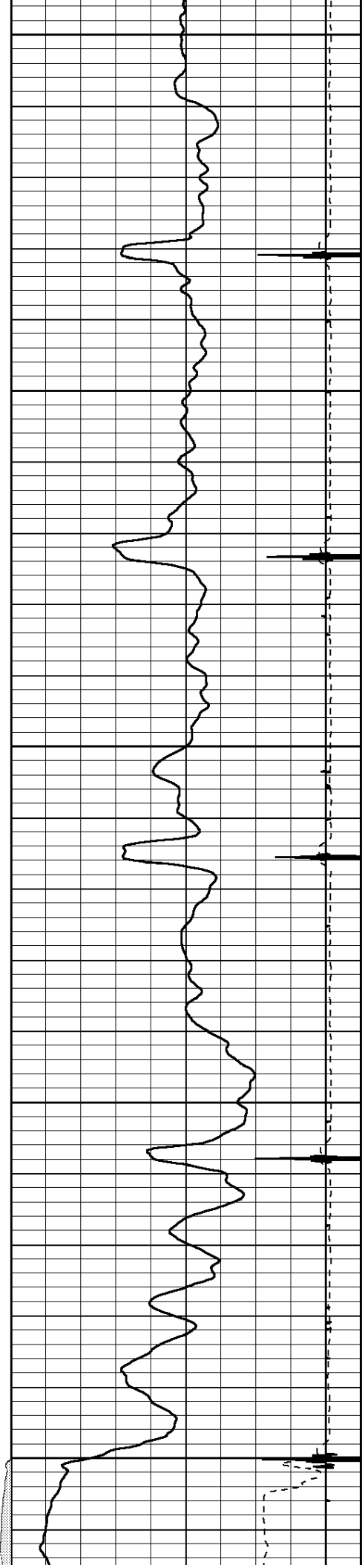
1650

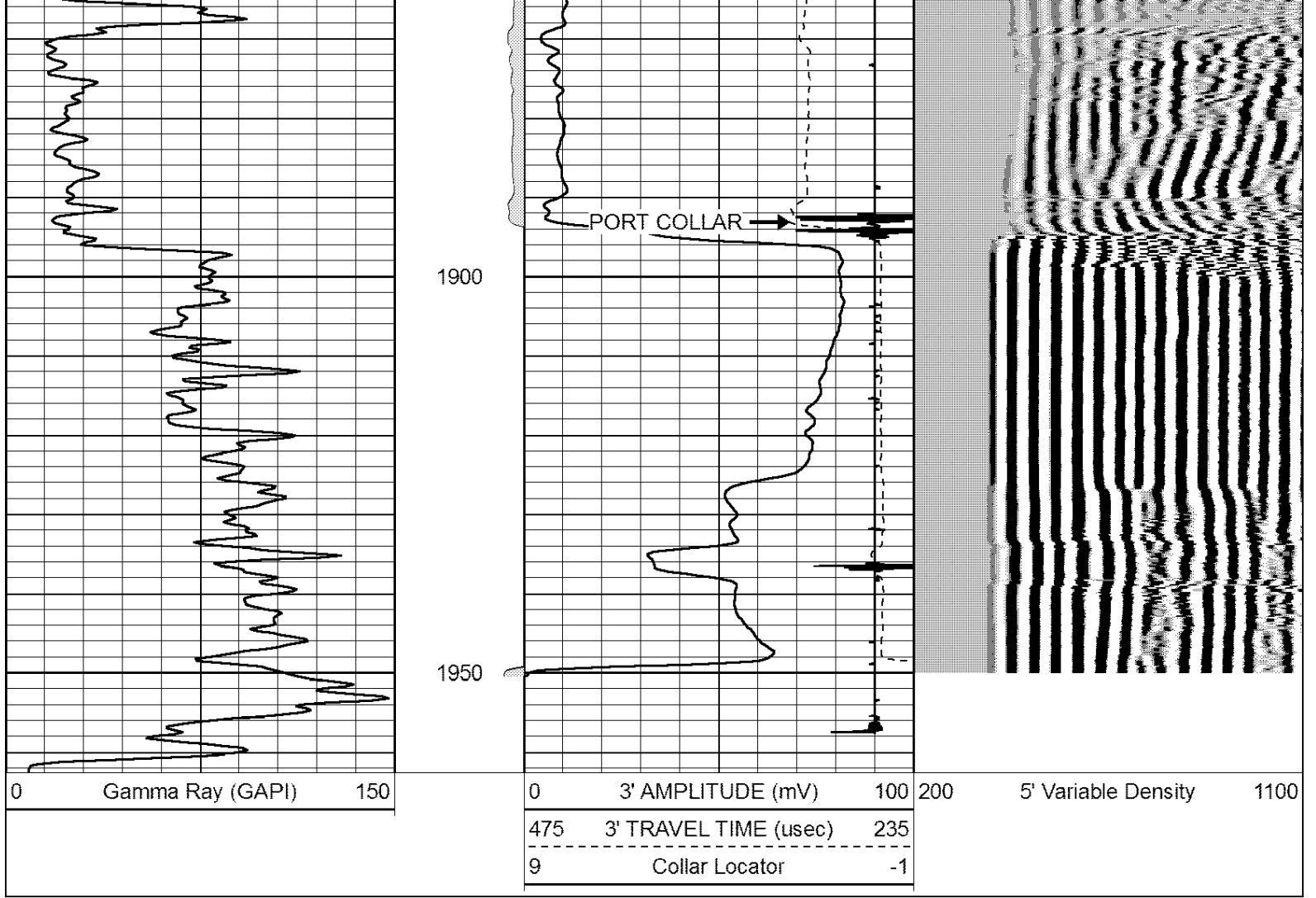
1700

1750

1800

1850

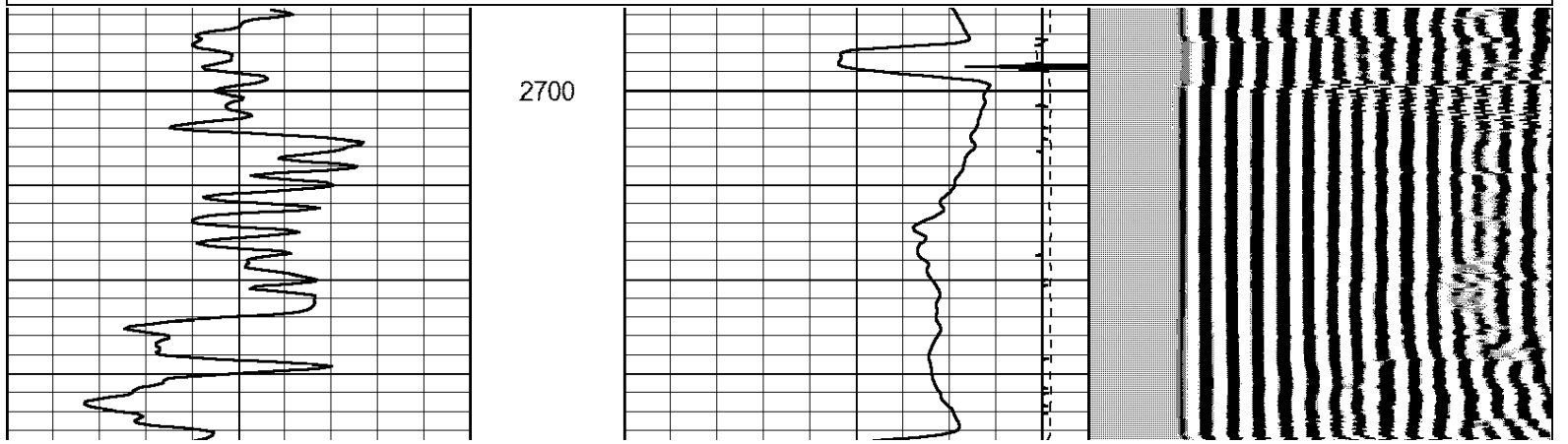
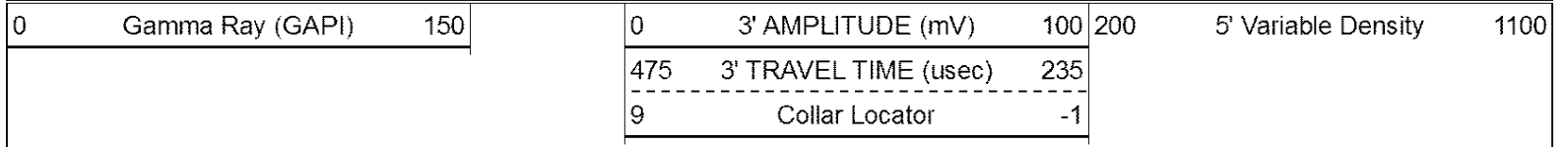


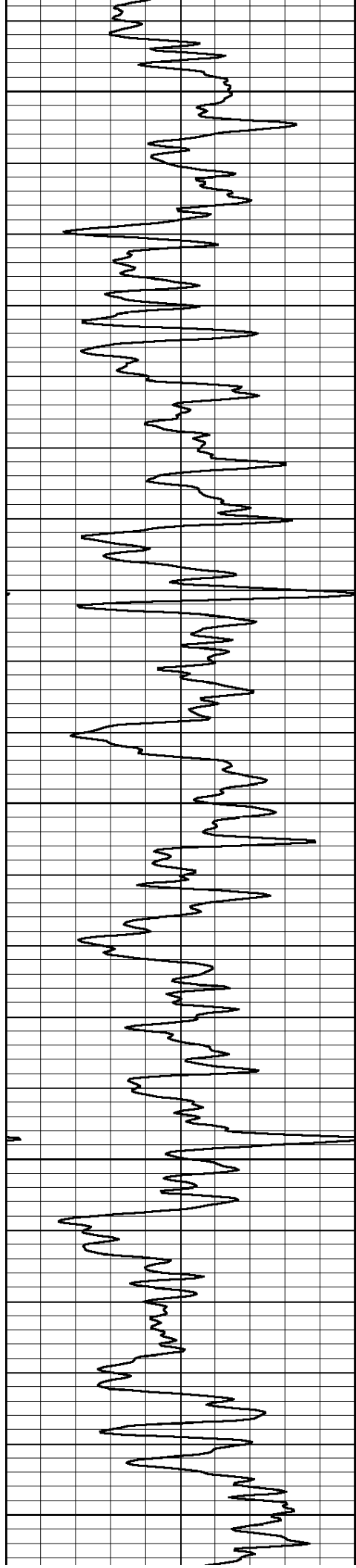


Perf-Tech
Wireline Services, Inc.

MAIN PASS

Database File: sept142209.db
 Dataset Pathname: pass3
 Presentation Format: 3x5
 Dataset Creation: Wed Sep 14 08:30:28 2022 by Log Std Casedhole 06040
 Charted by: Depth in Feet scaled 1:240





2750

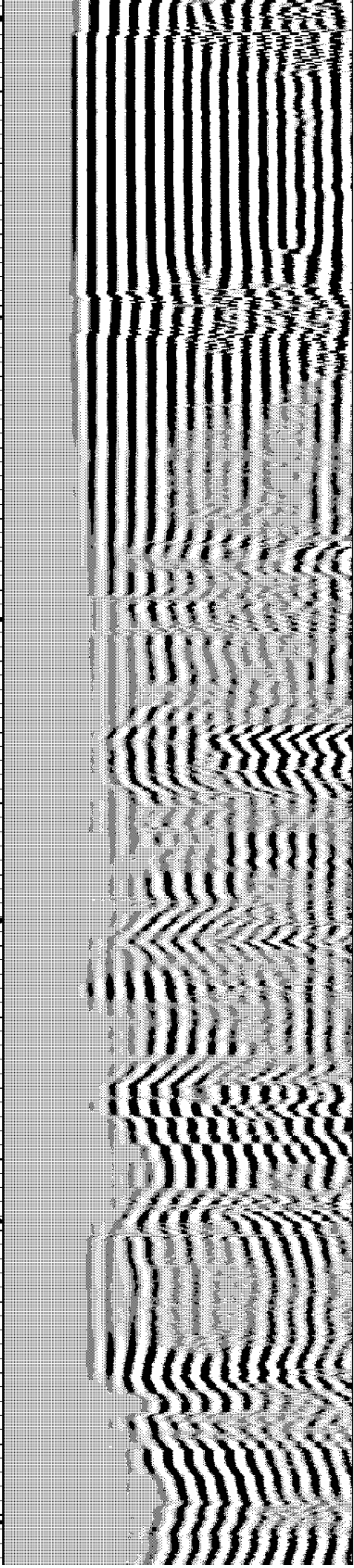
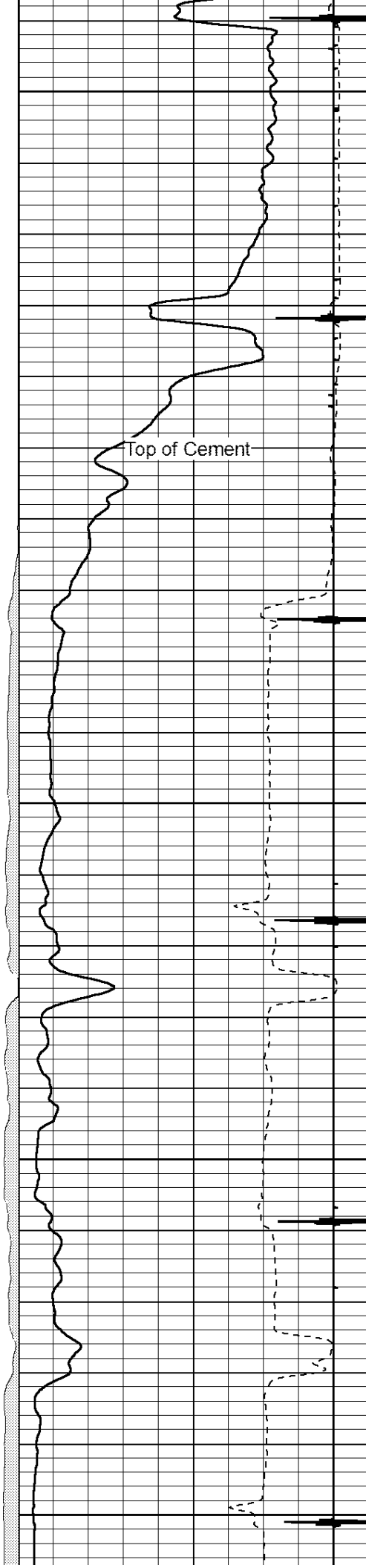
2800

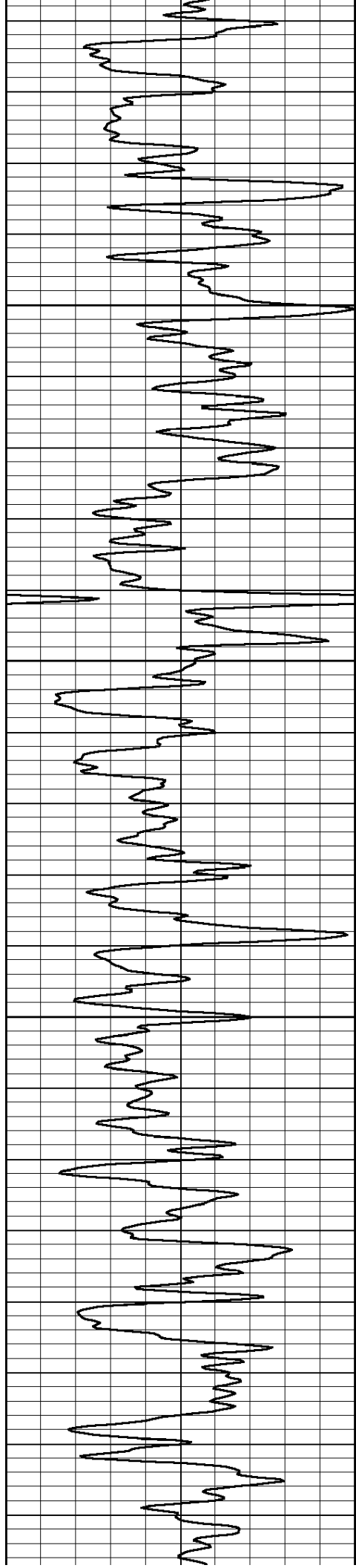
2850

2900

2950

Top of Cement



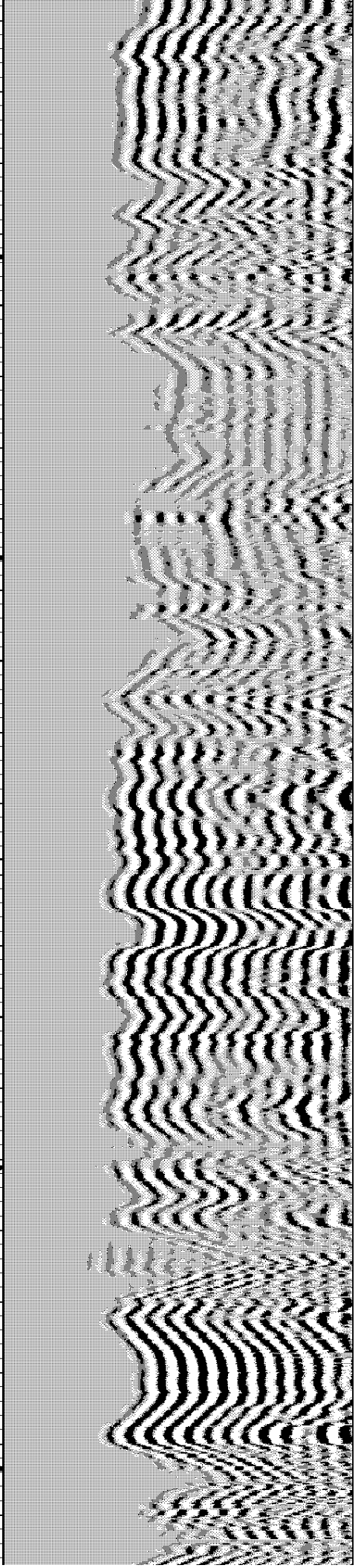
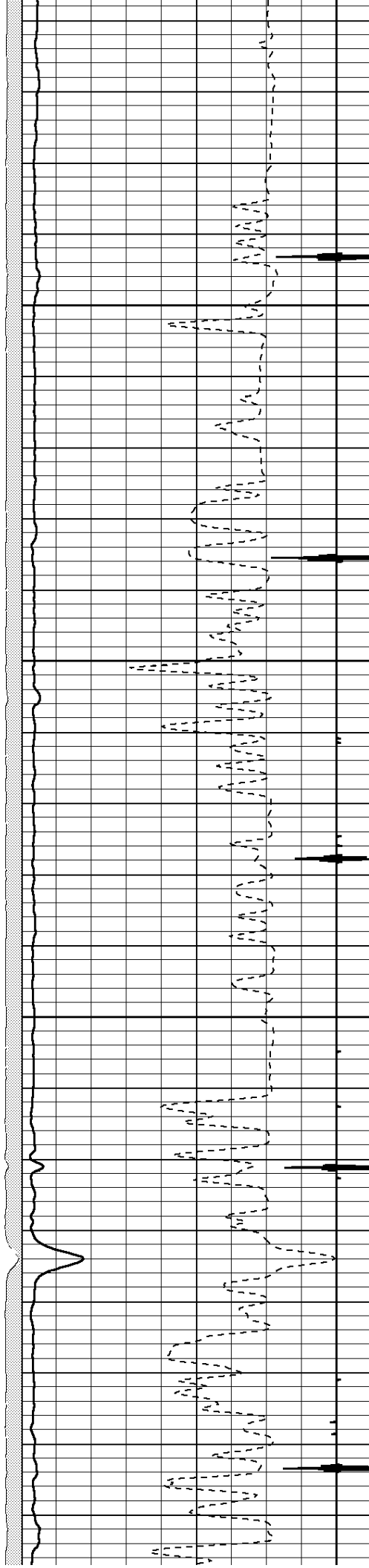


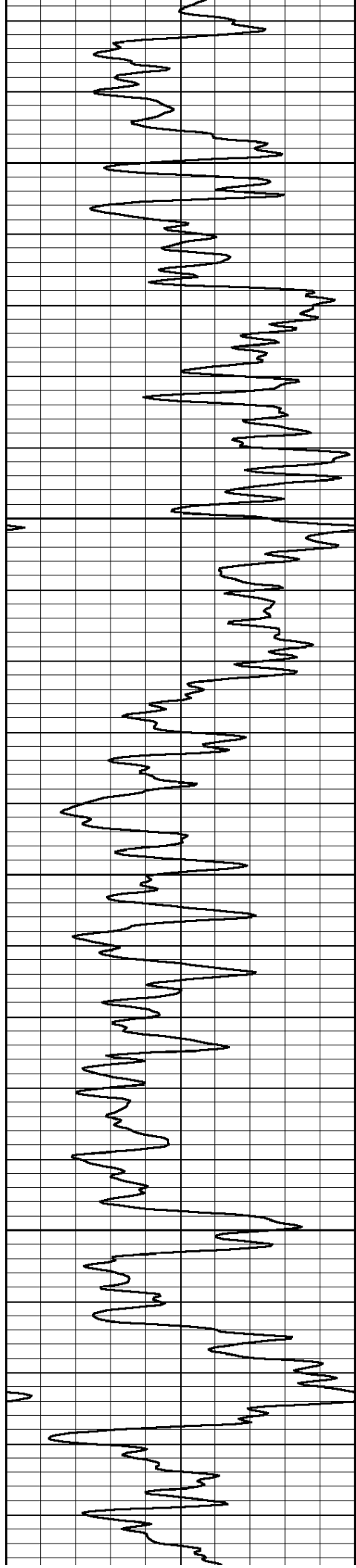
3000

3050

3100

3150



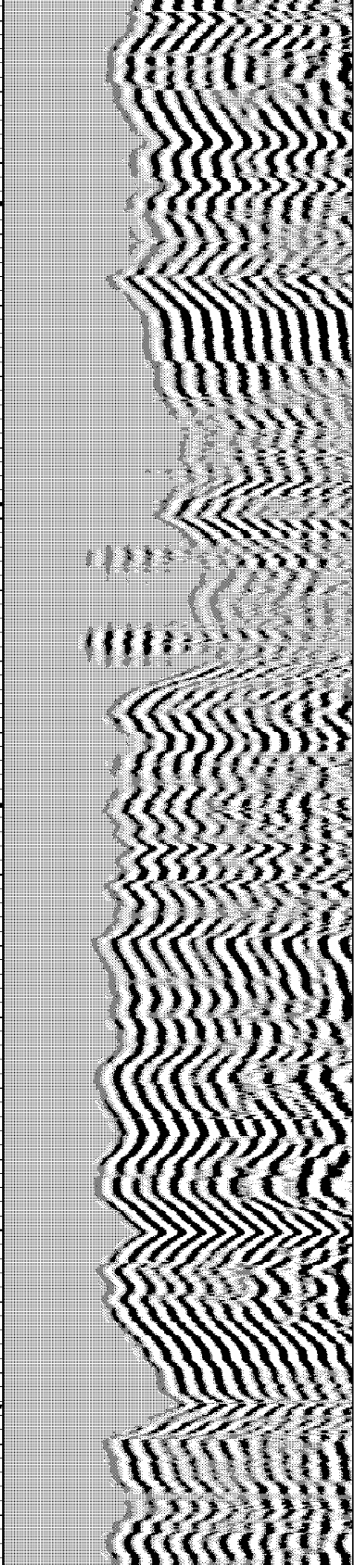
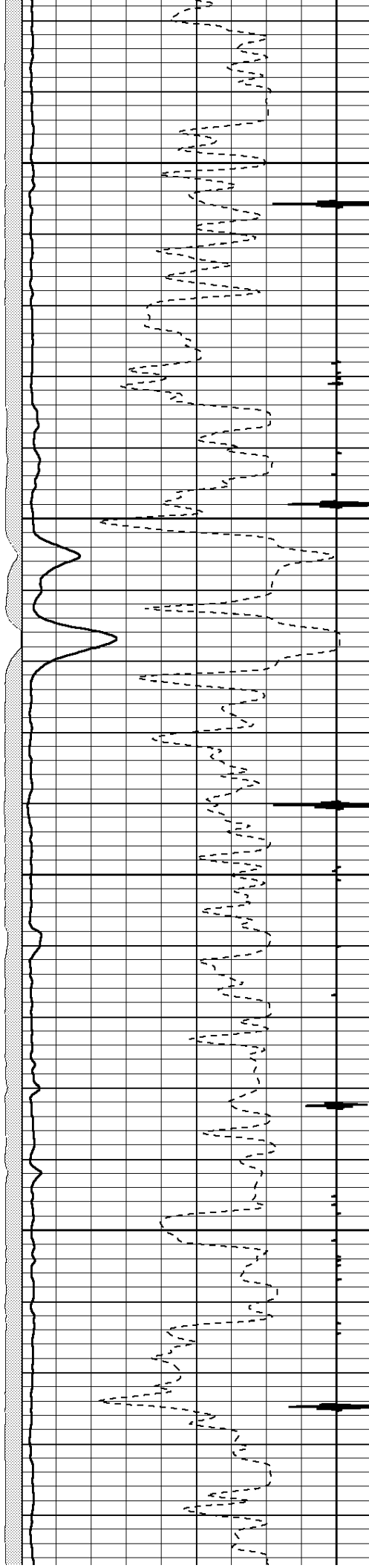


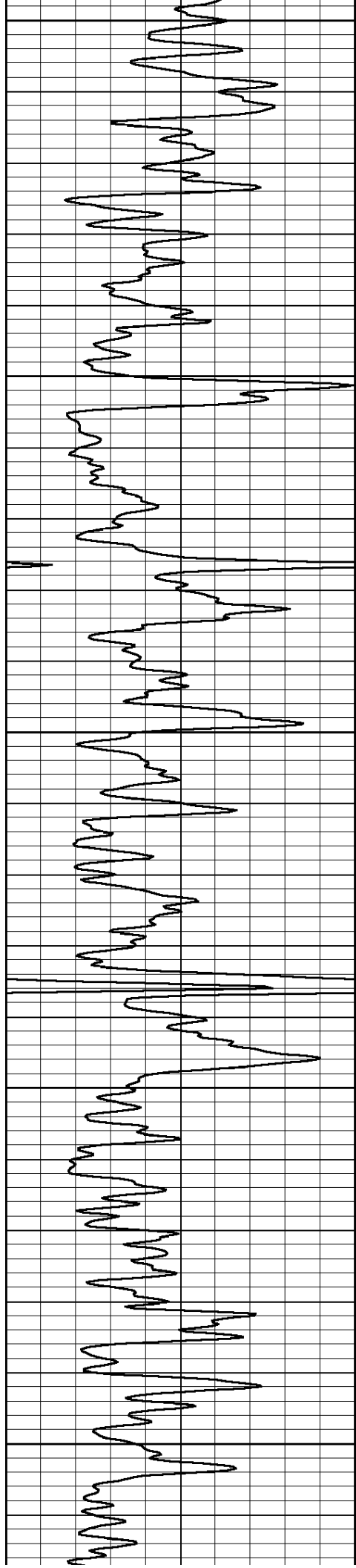
3200

3250

3300

3350





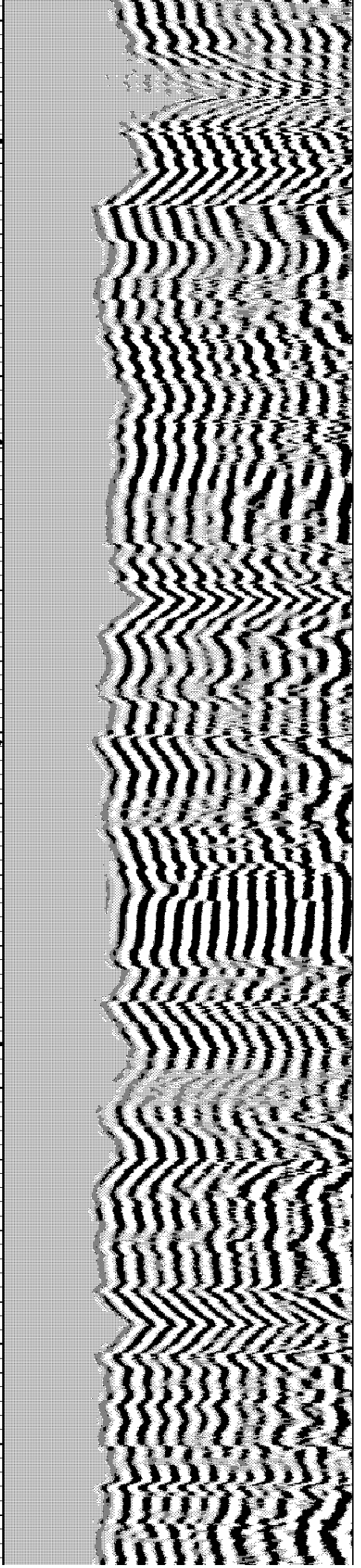
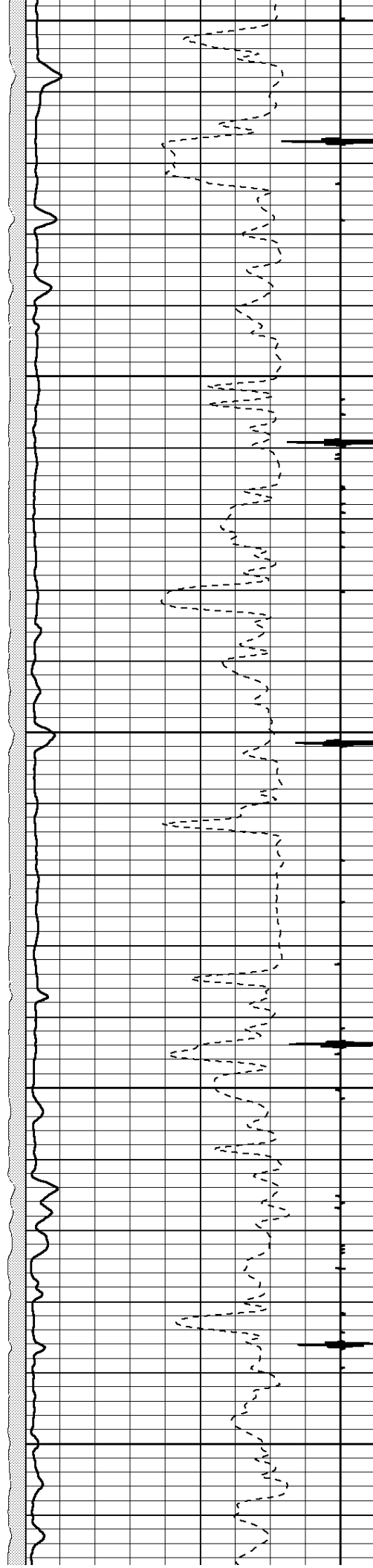
3400

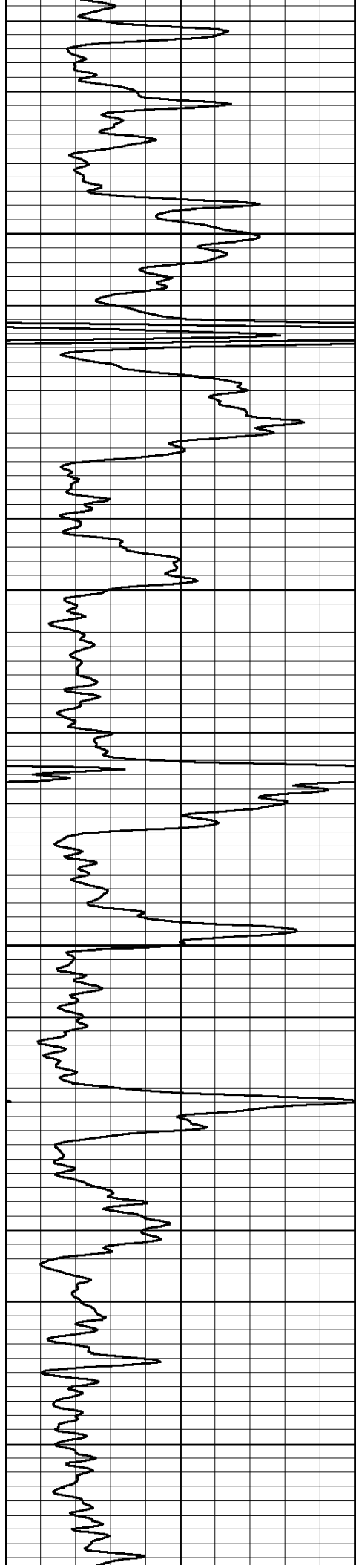
3450

3500

3550

3600



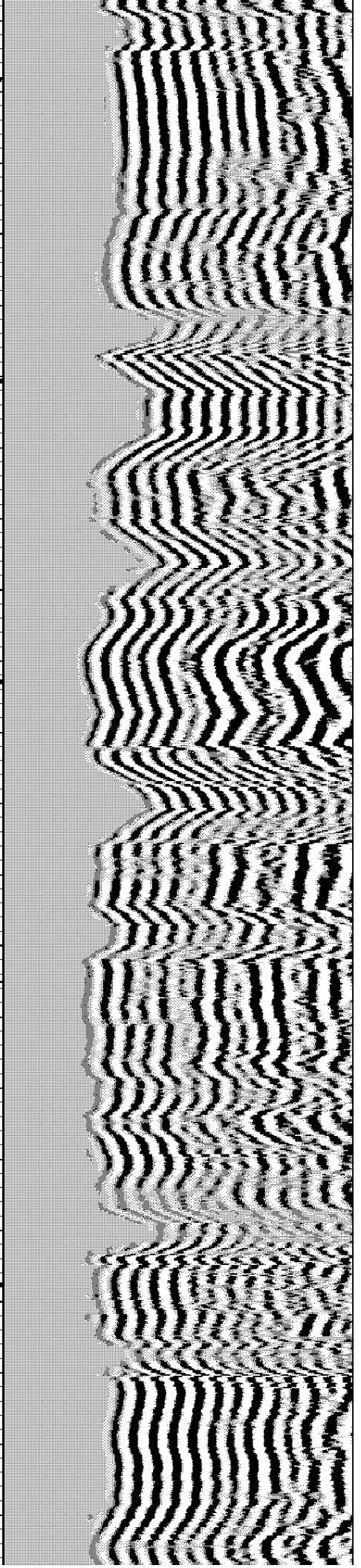
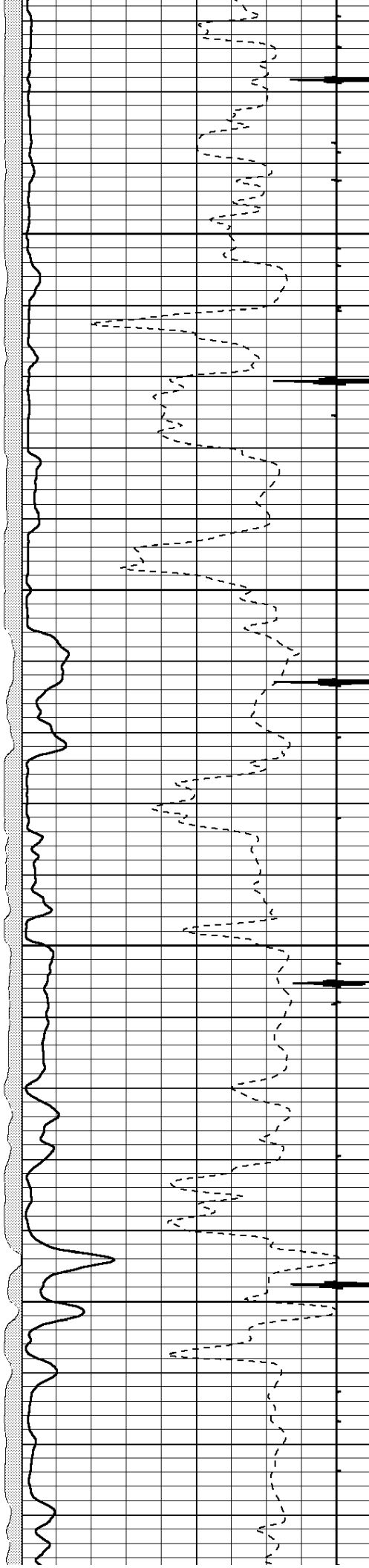


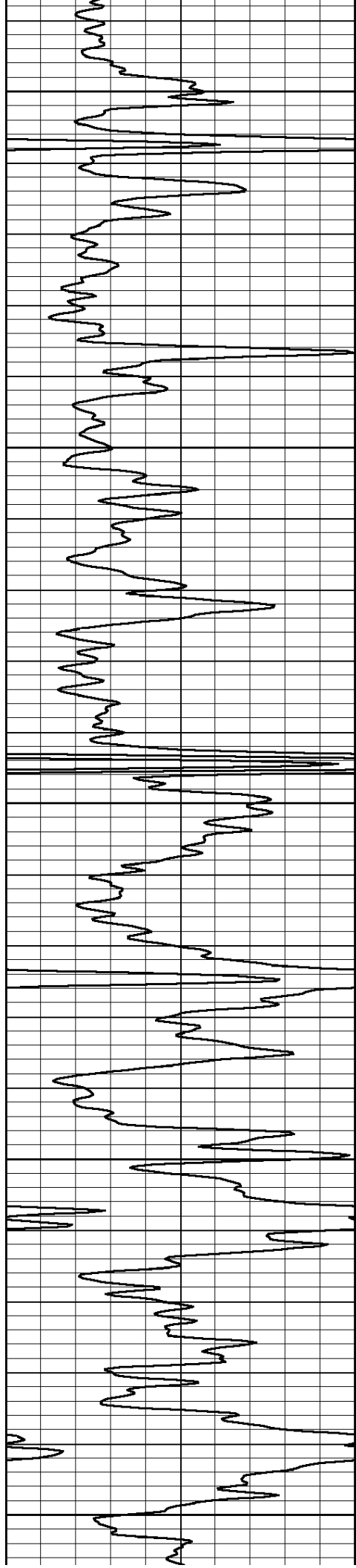
3650

3700

3750

3800





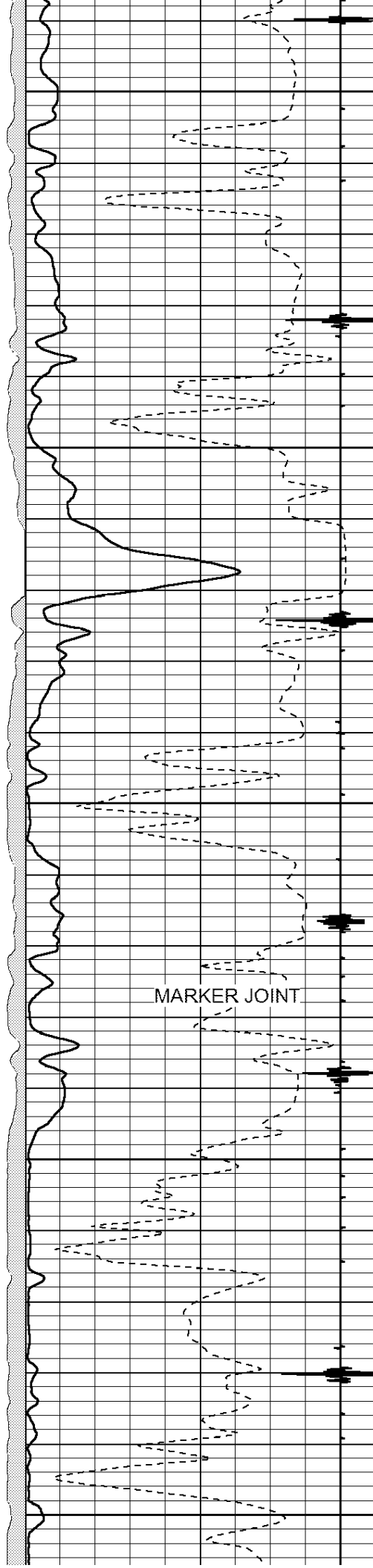
3850

3900

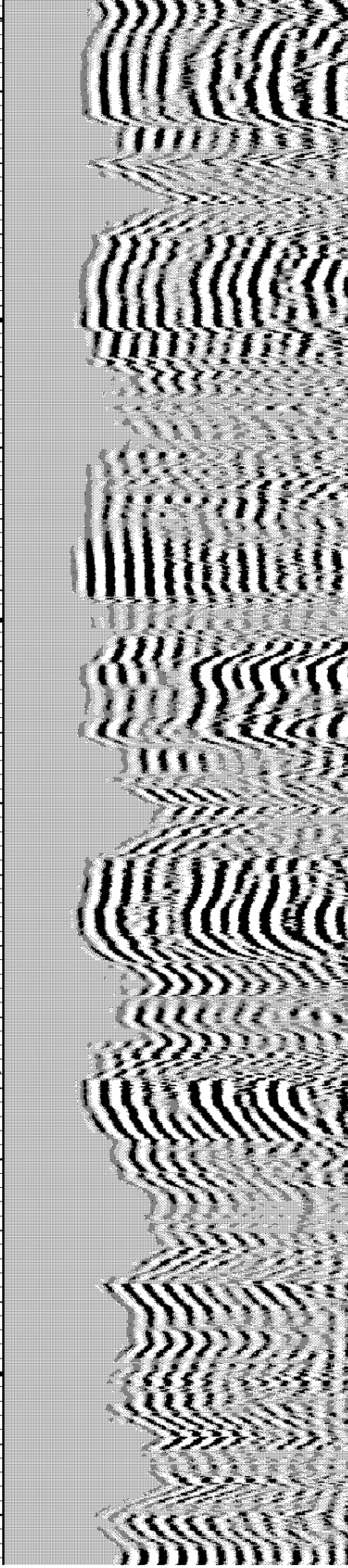
3950

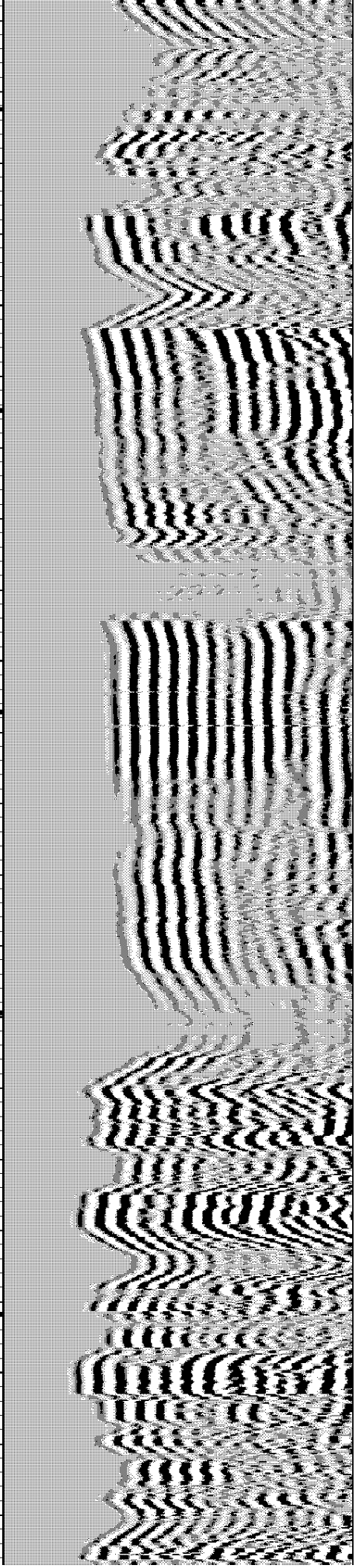
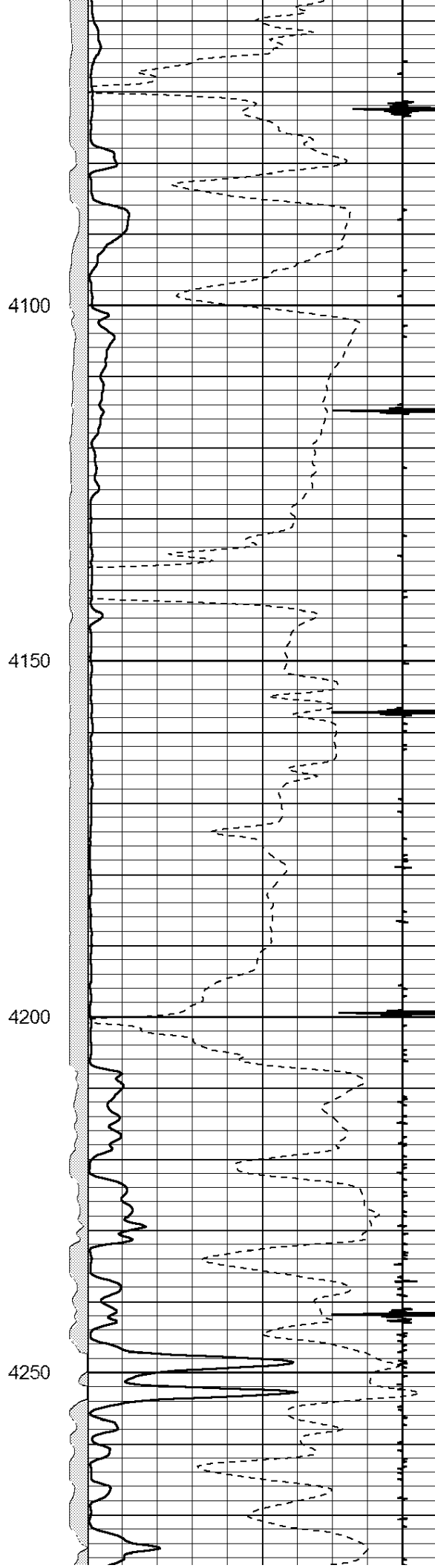
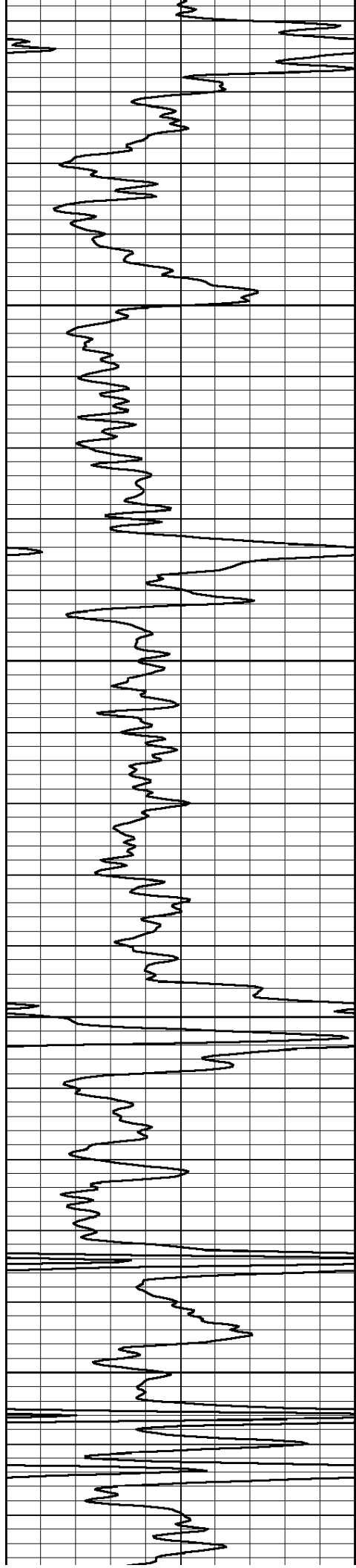
4000

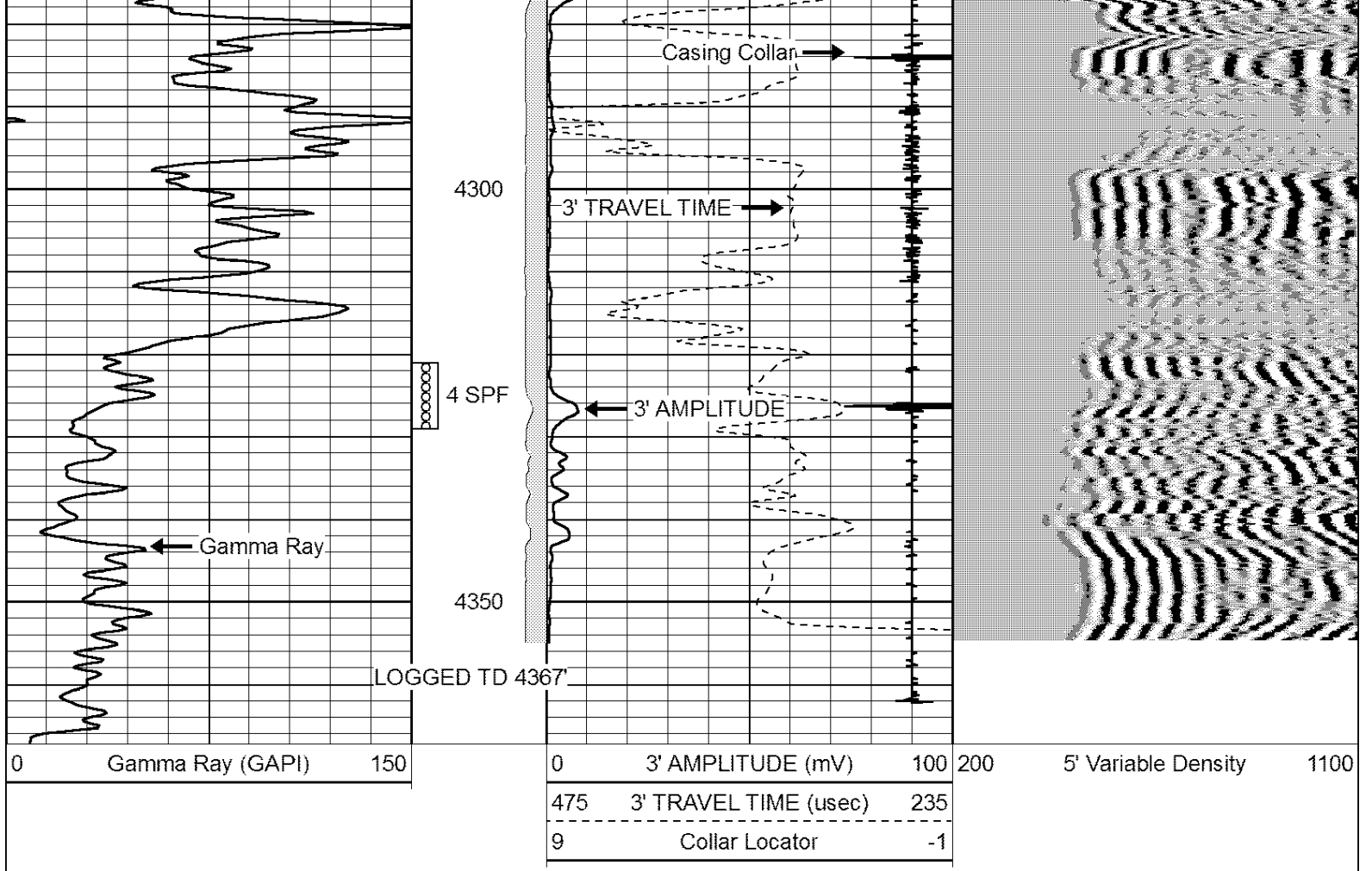
4050



MARKER JOINT







Perf-Tech
Wireline Services, Inc.

REPEAT SECTION

Database File: sept142209.db
 Dataset Pathname: pass2
 Presentation Format: 3x5
 Dataset Creation: Wed Sep 14 08:22:42 2022 by Log Std Casedhole 06040
 Charted by: Depth in Feet scaled 1:240

