



**RADIATION
GUARD
LOG**

| | |
|--|--|
| Company PALOMINO PETROLEUM Well BEARCAT #1 Field BEARCAT WEST County GOVE State KS | Company PALOMINO PETROLEUM Well BEARCAT #1 Field BEARCAT WEST County GOVE State KS |
| Location: 330' FNL & 330' FWL API #: 15 063 22413 | Other Services CDNL |
| Permanent Datum SEC 15 TWP 15S RGE 26W Log Measured From KB 8' AGL Drilling Measured From KB | Ground Level Elevation 2431 Elevation K.B. 2439 D.F. 2437 G.L. 2431 |

| | |
|------------------------------|-----------------|
| Date | 8/25/22 |
| Run Number | One |
| Depth Driller | 4420 |
| Depth Logger | 4417 |
| Bottom Logged Interval | 4415 |
| Top Log Interval | 00 |
| Casing Driller | 8 5/8" @ 223 |
| Casing Logger | 223 |
| Bit Size | 7 7/8" |
| Type Fluid in Hole | Chemical |
| Density / Viscosity | 9.2/46 |
| pH / Fluid Loss | 11.0/8.8 |
| Source of Sample | Pit |
| Rm @ Meas. Temp | .6@80degf |
| Rmf @ Meas. Temp | .45@80degf |
| Rmc @ Meas. Temp | .72@80degf |
| Source of Rmf / Rmc | Calculated |
| Rm @ BHT | .41@129degf |
| Time Circulation Stopped | 9:30 P.M. |
| Time Logger on Bottom | 4:00 AM |
| Maximum Recorded Temperature | 129degf |
| Equipment Number | T605 |
| Location | Hays, KS |
| Recorded By | GUS PFANENSTIEL |
| Witnessed By | KEATON JONES |

<<< Fold Here >>>

All interpretations are opinions based on inferences from electrical or other measurements and we cannot and do not guarantee the accuracy or correctness of any interpretation, and we shall not, except in the case of gross or willful negligence on our part, be liable or responsible for any loss, costs, damages, or expenses incurred or sustained by anyone resulting from any interpretation made by any of our officers, agents or employees. These interpretations are also subject to our general terms and conditions set out in our current Price Schedule.

Comments

WEST SIDE OF UTICA NORTH ON D RD. TO COUNTY LINE 1 WEST,
3.5 NORTH WEST INTO. (3 CATTLE GUARDS THEN HEAD NORTH)

Thank You for using Gemini Wireline LLC
785-625-1182

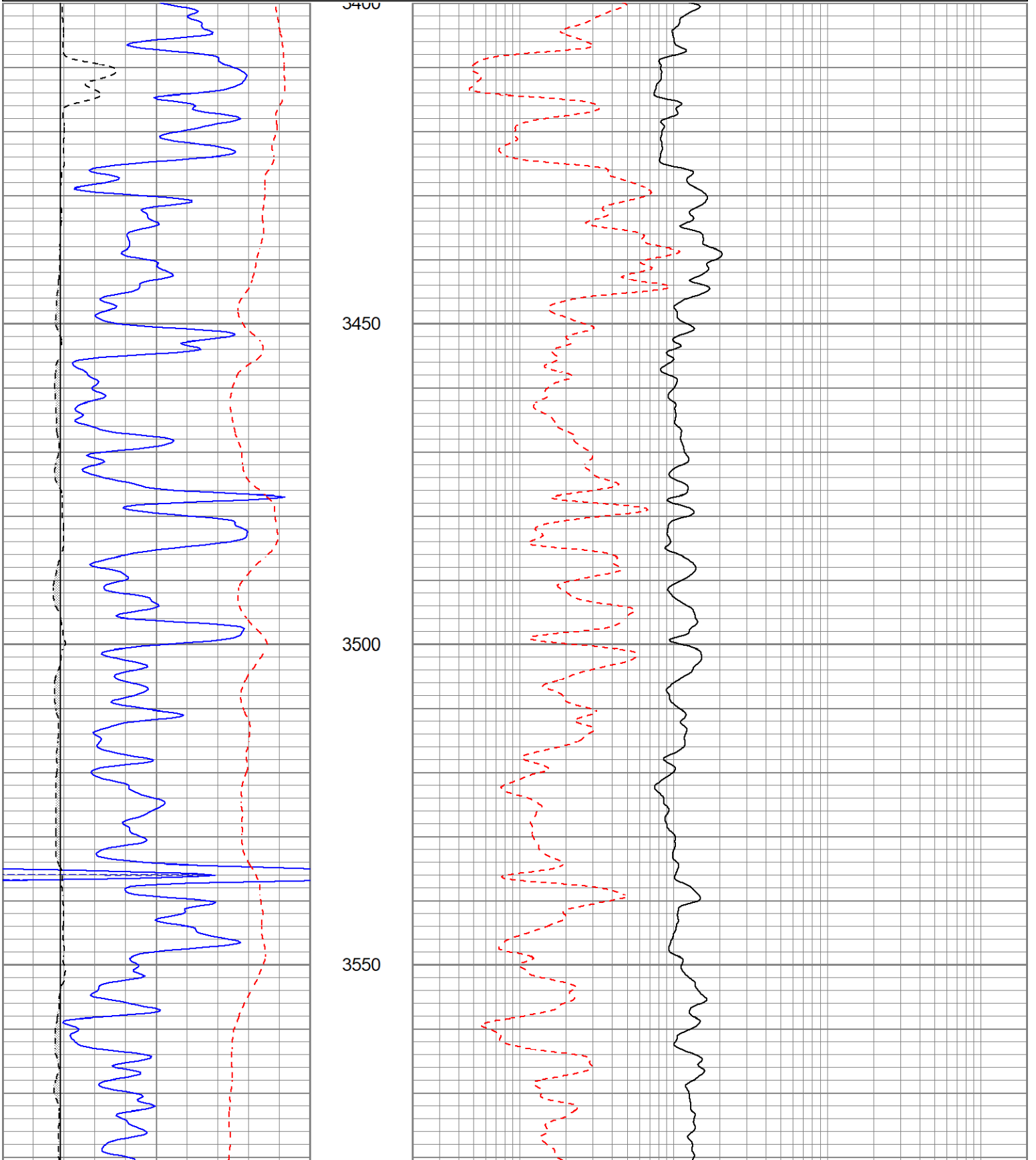


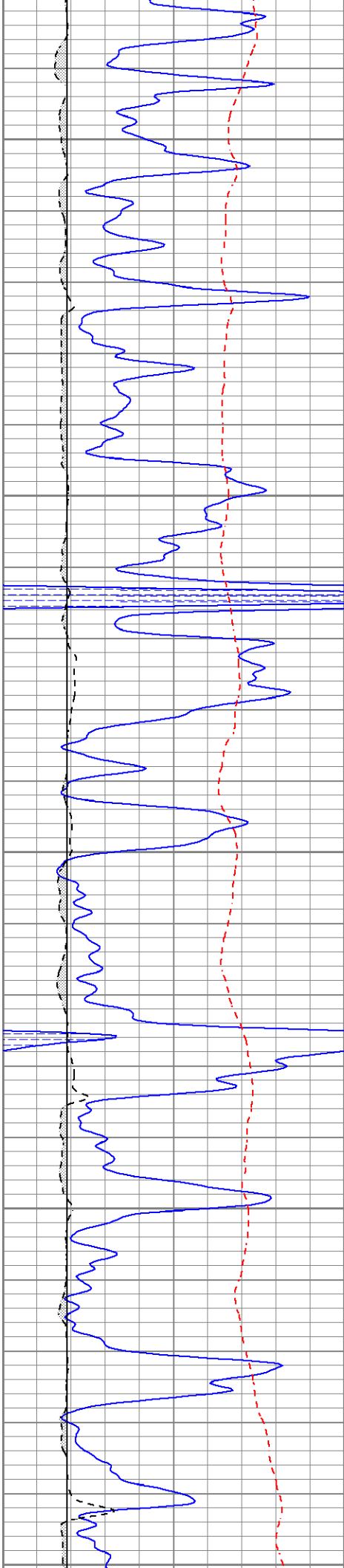
MAIN PASS

Database File ppbearcat#10h.db
 Dataset Pathname pass3.1
 Presentation Format krg
 Dataset Creation Thu Aug 25 04:45:47 2022
 Charted by Depth in Feet scaled 1:240

| | | |
|------|-------------|-----|
| 0 | GR (GAPI) | 150 |
| 6 | BOREID (in) | 16 |
| -100 | SP (mV) | 100 |
| 6 | DCAL (in) | 16 |

| | | |
|-----|--------------|------|
| 110 | NEU (NAPI) | 620 |
| 0.2 | RLL3 (Ohm-m) | 2000 |





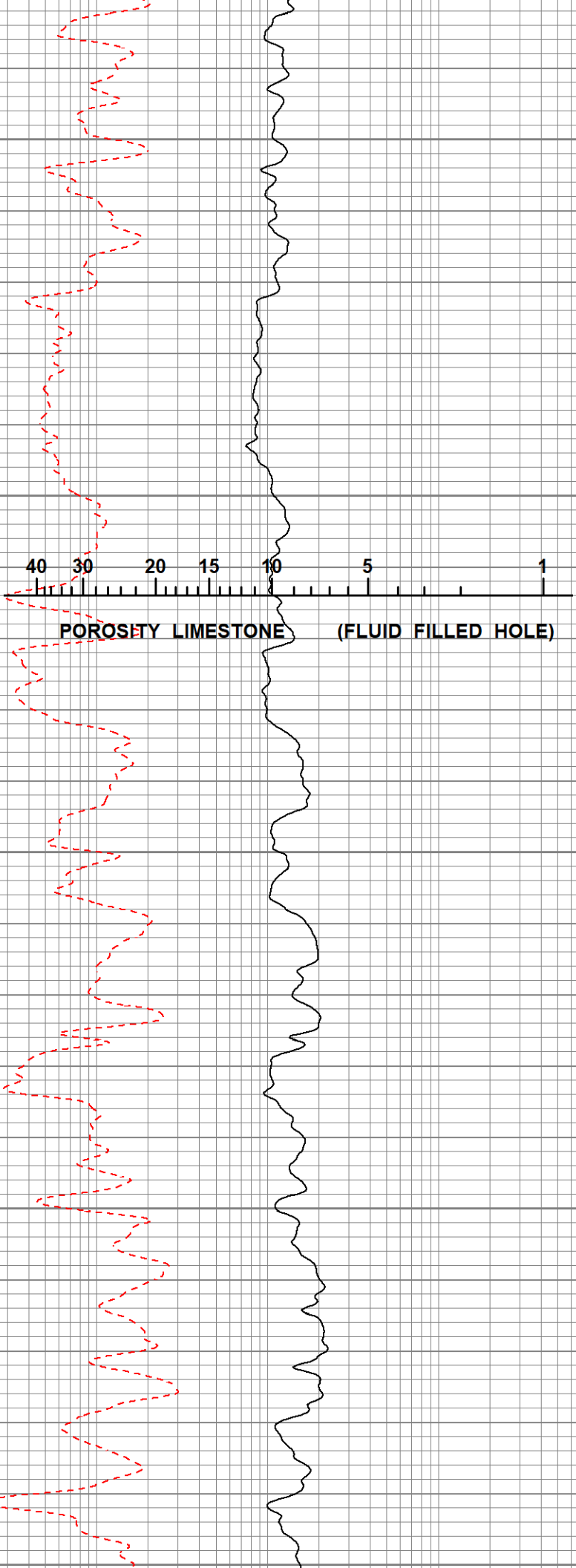
3600

3650

3700

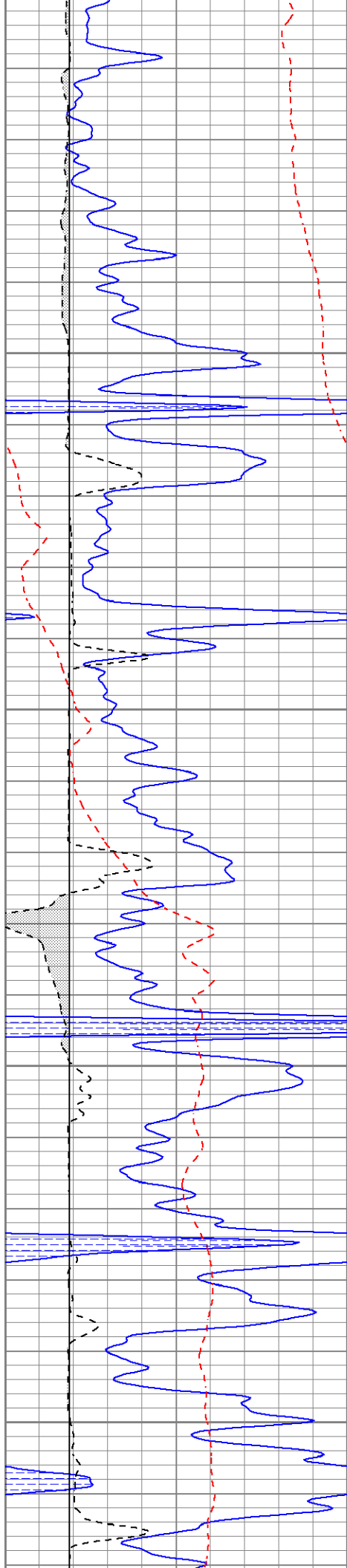
3750

3800

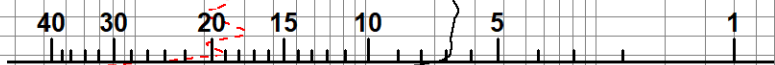


40 30 20 15 10 5 1

POROSITY LIMESTONE (FLUID FILLED HOLE)



3850

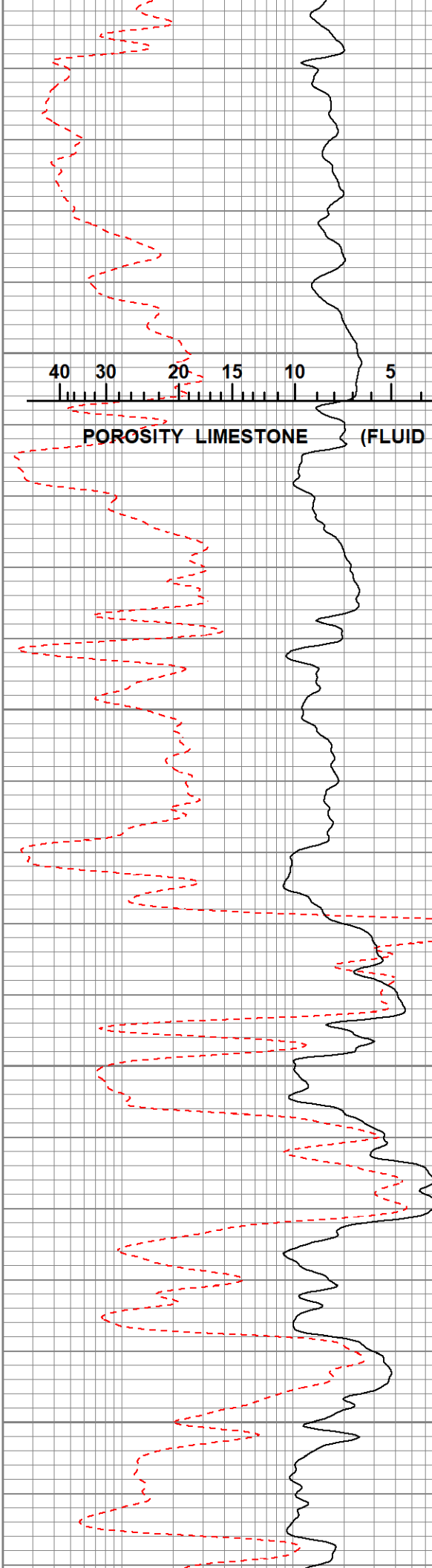


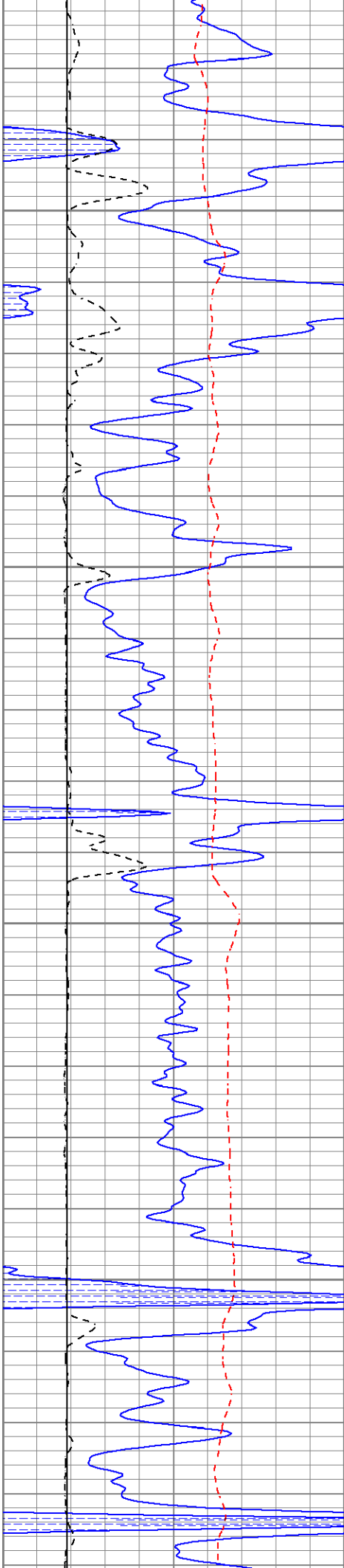
POROSITY LIMESTONE (FLUID FILLED HOLE)

3900

3950

4000





4050

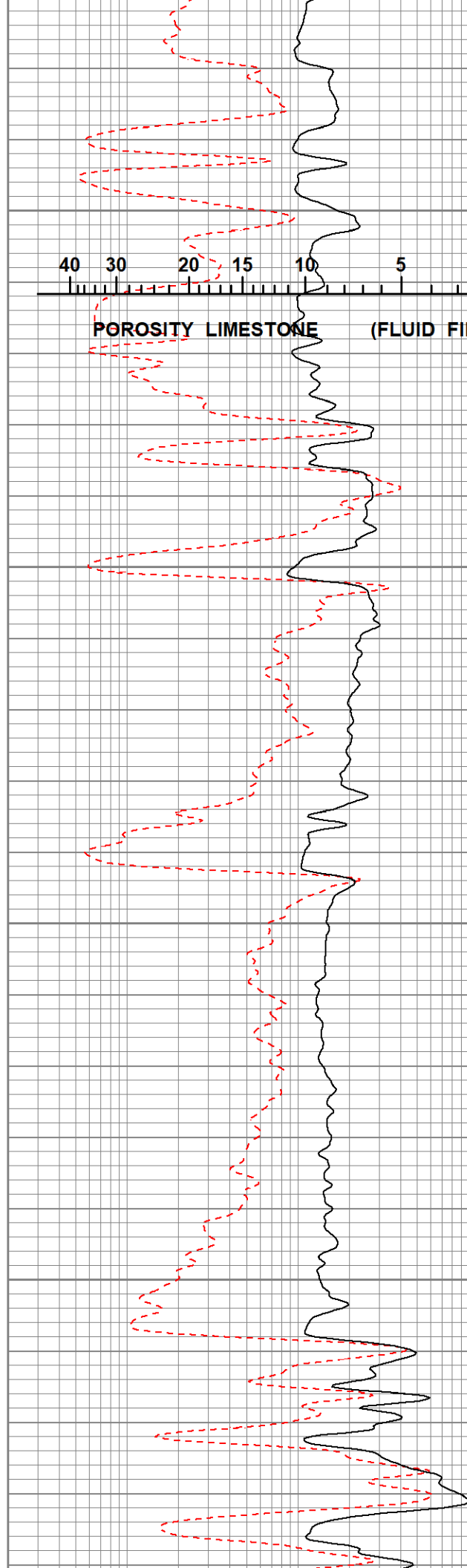


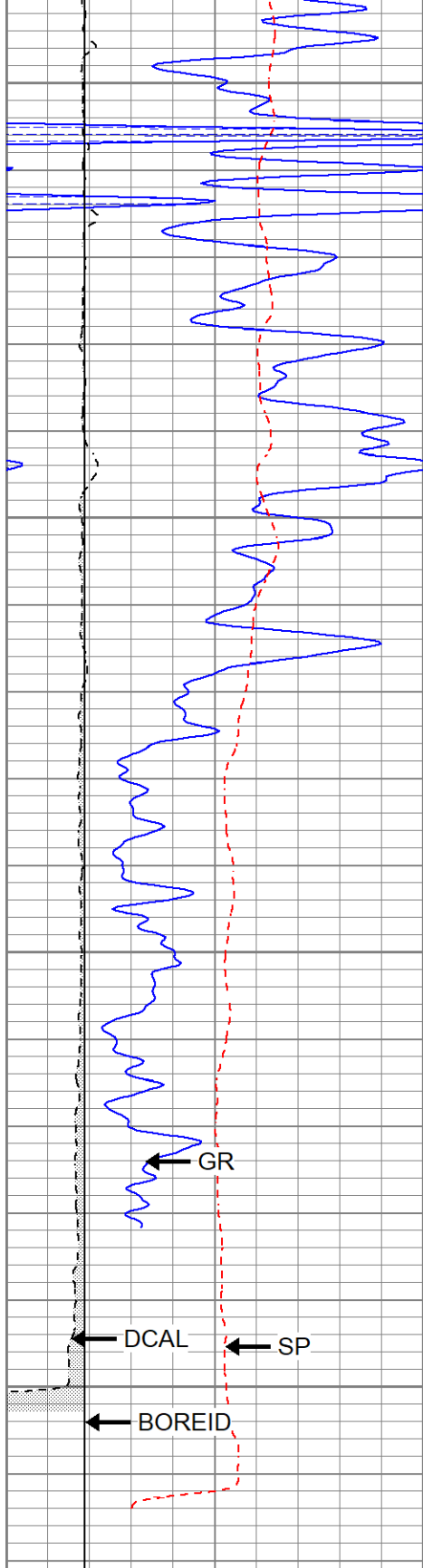
POROSITY LIMESTONE (FLUID FILLED HOLE)

4100

4150

4200





4250

4300

4350

4400

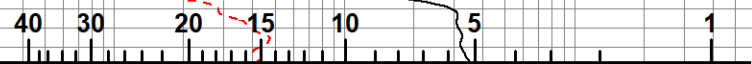
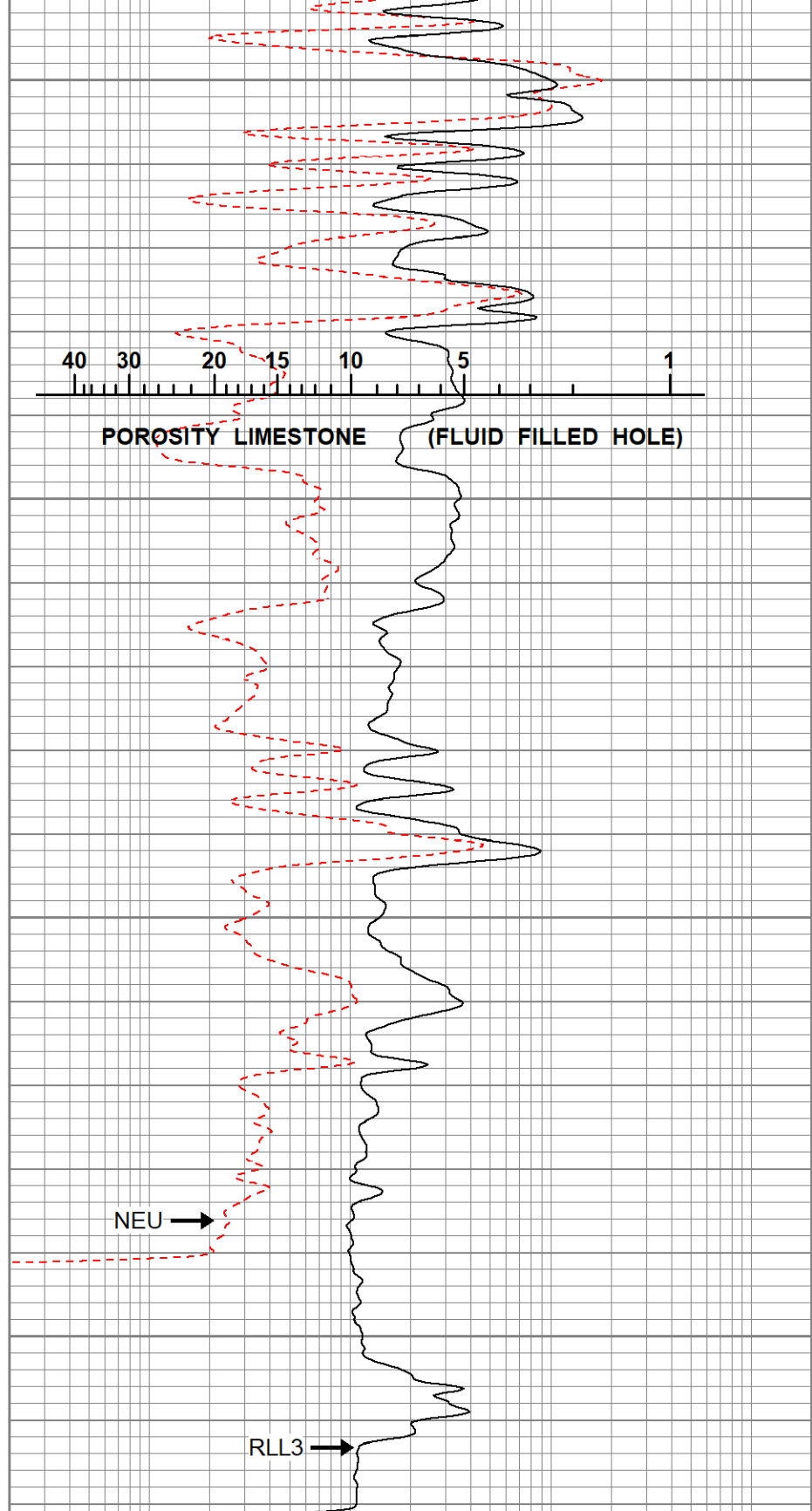
GR

DCAL

SP

BOREID

| | | |
|------|-------------|-----|
| 0 | GR (GAPI) | 150 |
| 6 | BOREID (in) | 16 |
| -100 | SP (mV) | 100 |
| 6 | DCAL (in) | 16 |



POROSITY LIMESTONE (FLUID FILLED HOLE)

NEU

RLL3

| | | |
|-----|--------------|------|
| 110 | NEU (NAPI) | 620 |
| 0.2 | RLL3 (Ohm-m) | 2000 |