

**MICRO LOG**

Company **BLUERIDGE PETROLEUM CORPORATION**  
 Well **STICE #2-2**  
 Field **ALTA VISTA**  
 County **WABAUNSEE** State **KANSAS**

Location: **API # : 15-197-20319-0000**  
**330' FSL & 641' FWL**  
**E2 - SW - SW - SW**  
 Permanent Datum **GROUND LEVEL** Elevation **1496**  
 Log Measured From **KELLY BUSHING 8' A.G.L**  
 Drilling Measured From **KELLY BUSHING**

Other Services **CDL/CNL/PE DIL/SON**  
 Elevation **K.B. 1504 D.F. 1502 G.L. 1496**

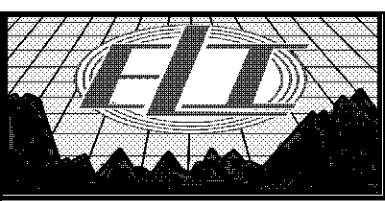
Date	7/15/22
Run Number	TWO
Depth Driller	2280
Depth Logger	2279
Bottom Logged Interval	2263
Top Log Interval	340
Casing Driller	8 5/8" @ 327
Casing Logger	340
Bit Size	7 7/8
Type Fluid in Hole	CHEMICAL MUD
Density / Viscosity	9.2/48
PH / Fluid Loss	9.5/10.0
Source of Sample	FLOWLINE
Rm @ Meas. Temp	1.50 @ 85F
Rmt @ Meas. Temp	1.13 @ 85F
Rmc @ Meas. Temp	1.80 @ 85F
Source of Rmf / Rmc	MEASUREMENT
Rm @ BHT	1.26 @ 101F
Time Circulation Stopped	4 HOURS
Time Logger on Bottom	3:30 P.M.
Maximum Recorded Temperature	101F
Equipment Number	3802
Location	HAYS, KANSAS
Recorded By	COLE ROBBEN
Witnessed By	JIM MUSGROVE

<<< Fold Here >>>

All interpretations are opinions based on inferences from electrical or other measurements and we cannot and do not guarantee the accuracy or correctness of any interpretation, and we shall not, except in the case of gross or willful negligence on our part, be liable or responsible for any loss, costs, damages, or expenses incurred or sustained by anyone resulting from any interpretation made by any of our officers, agents or employees. These interpretations are also subject to our general terms and conditions set out in our current Price Schedule.

**Comments**

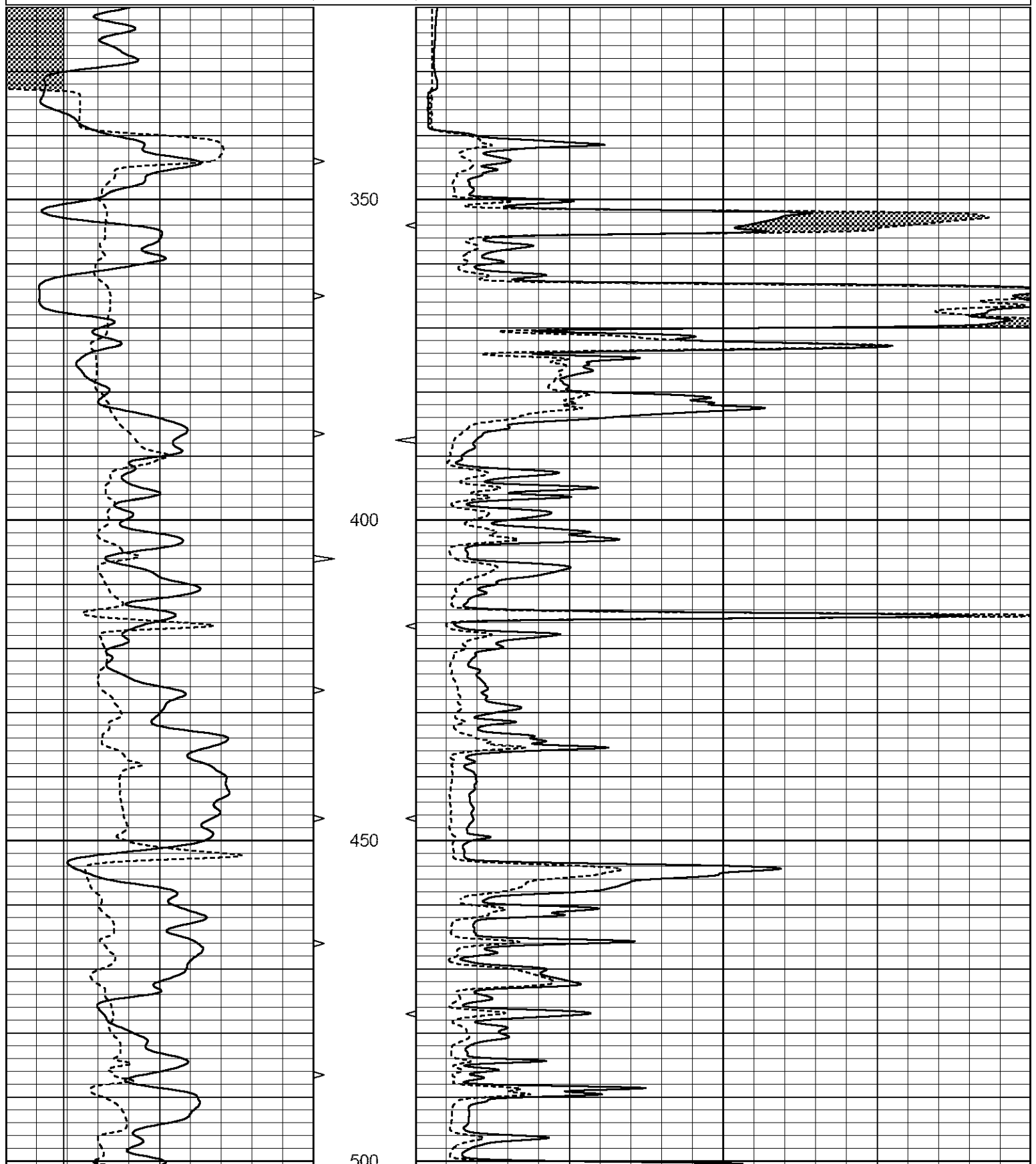
THANK YOU FOR USING ELI WIRELINE SERVICES, HAYS, KS. ( 785 ) 628-6395  
 DIRECTIONS:  
 I-70 EXIT #313 (MANHATTAN/COUNCIL GROVE) 15 MILES SOUTH TO HIGHWAY 4 (ALTA VISTA),  
 EAST 1/8TH MILE, NORTH INTO

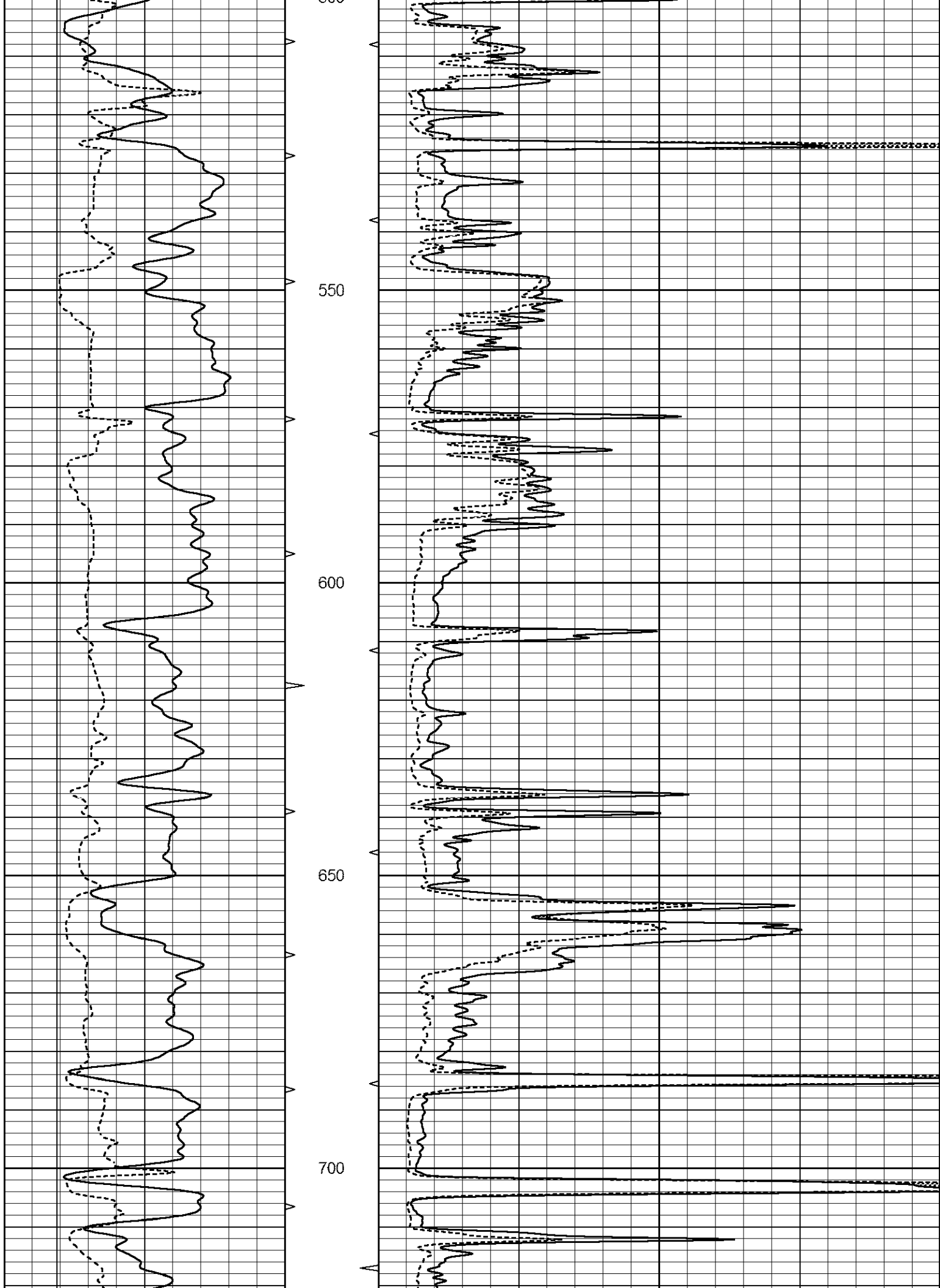


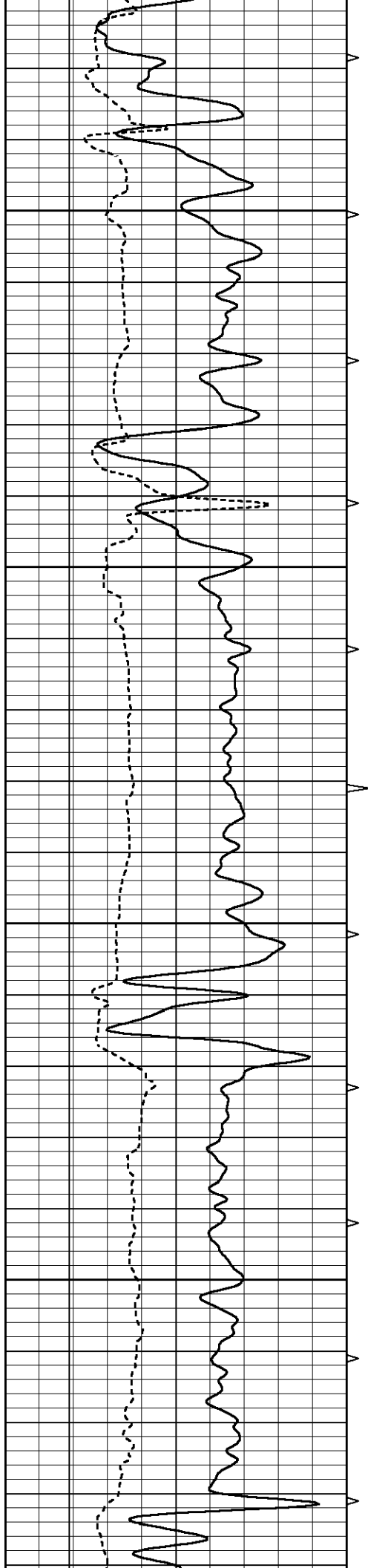
**MAIN SECTION**

Database File 6757pe.db  
 Dataset Pathname pass12CR  
 Presentation Format \_micro  
 Dataset Creation Fri Jul 15 18:43:34 2022  
 Charted by Depth in Feet scaled 1:240

0	GAMMA RAY (GAPI)	150	ABHV	0	MEL1.5 (Ohm-m)	40
6	CALIPER (in)	16	10 (ft3)	0	MEL2.0 (Ohm-m)	40
			TBHV			
			0 (ft3)	10		





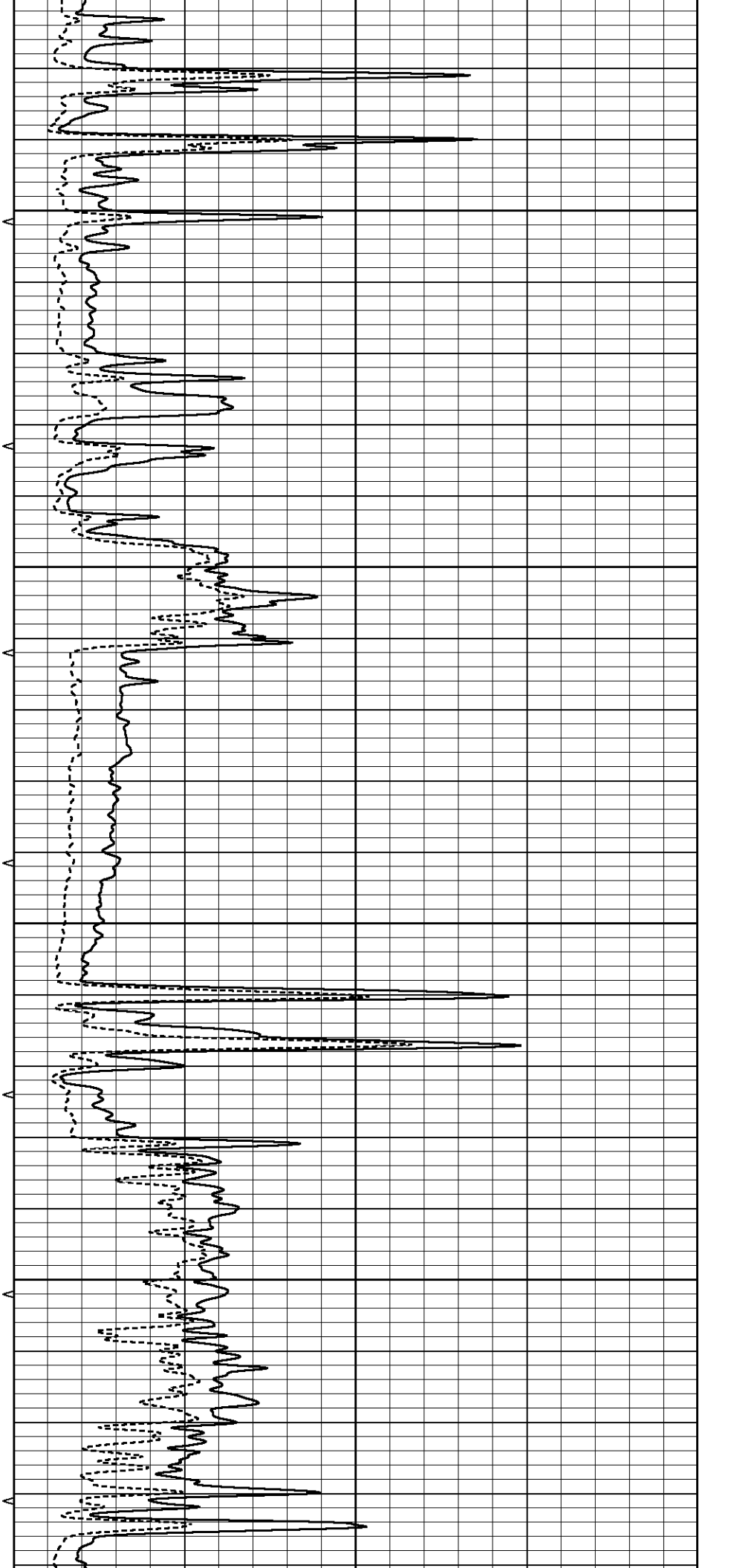


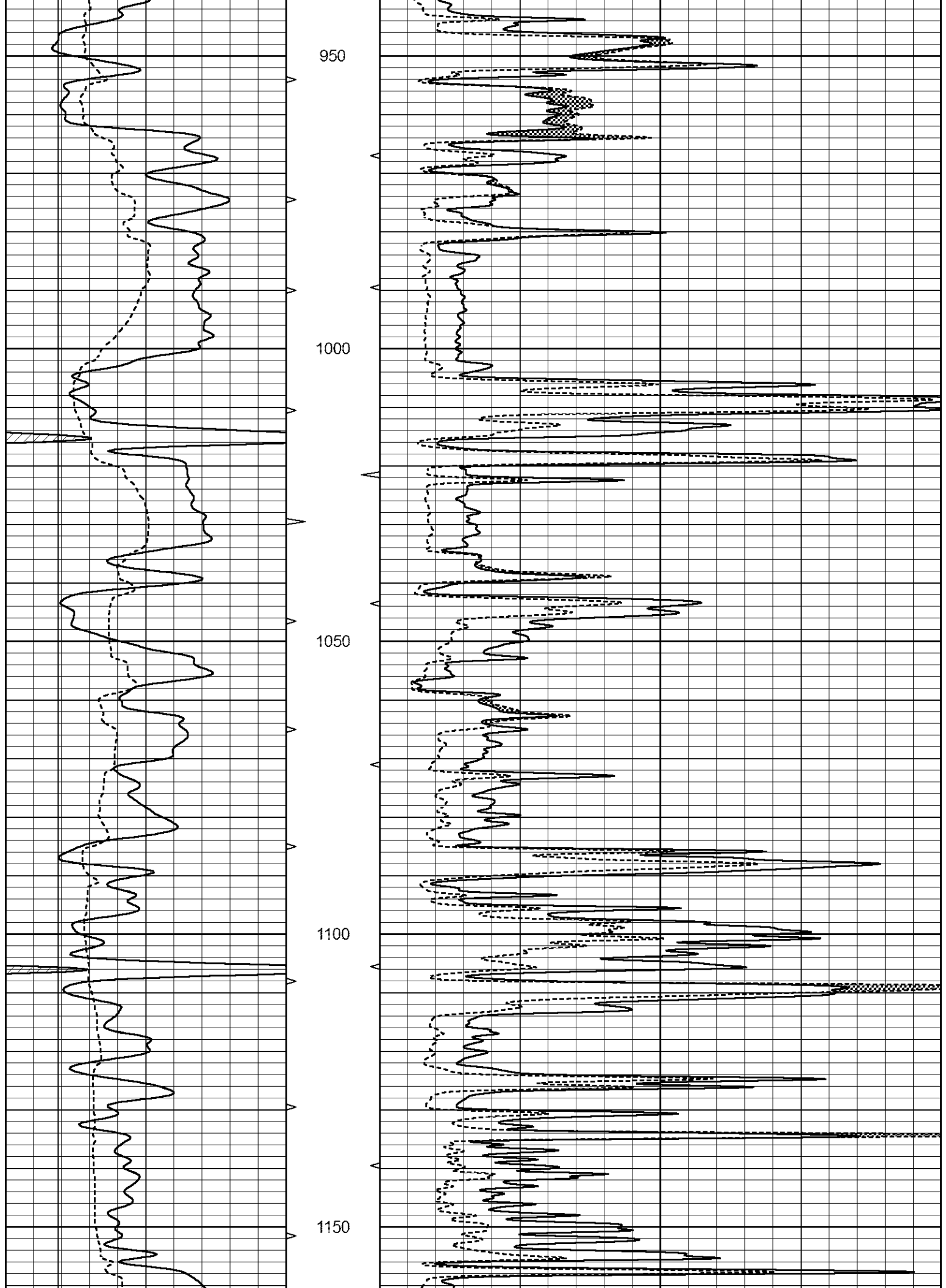
750

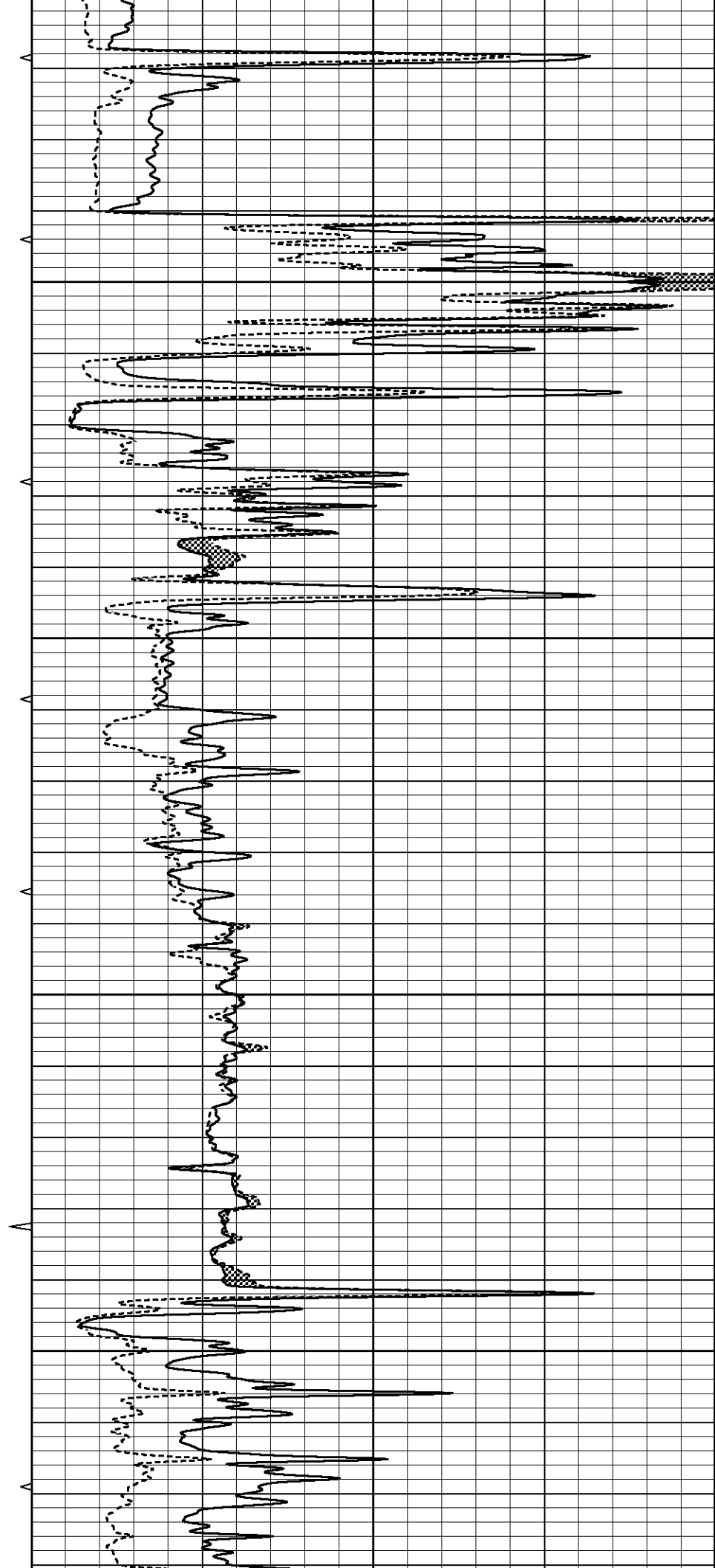
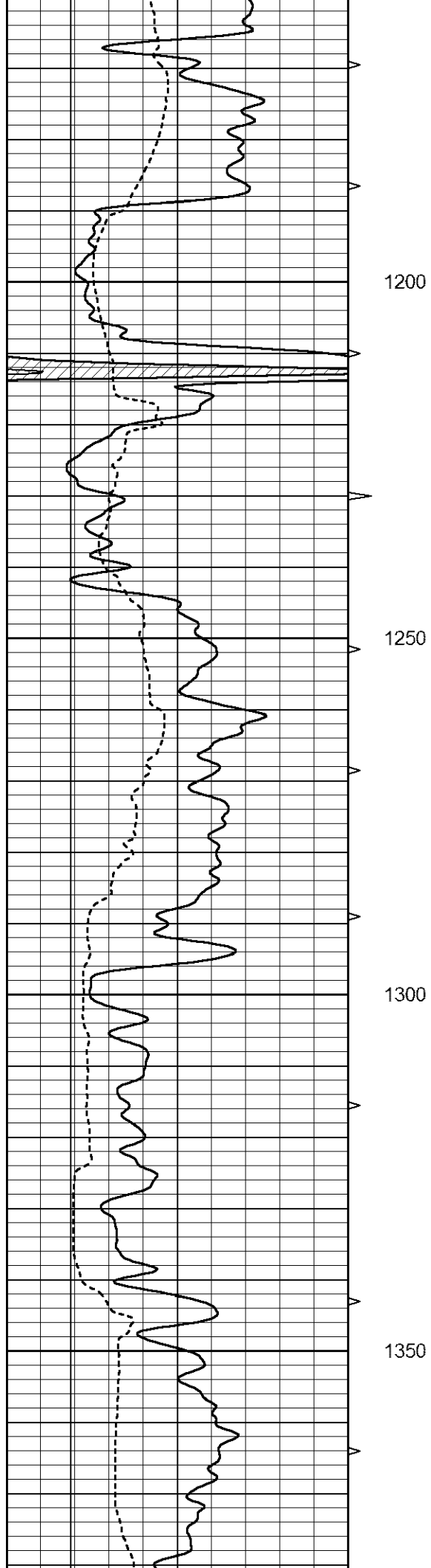
800

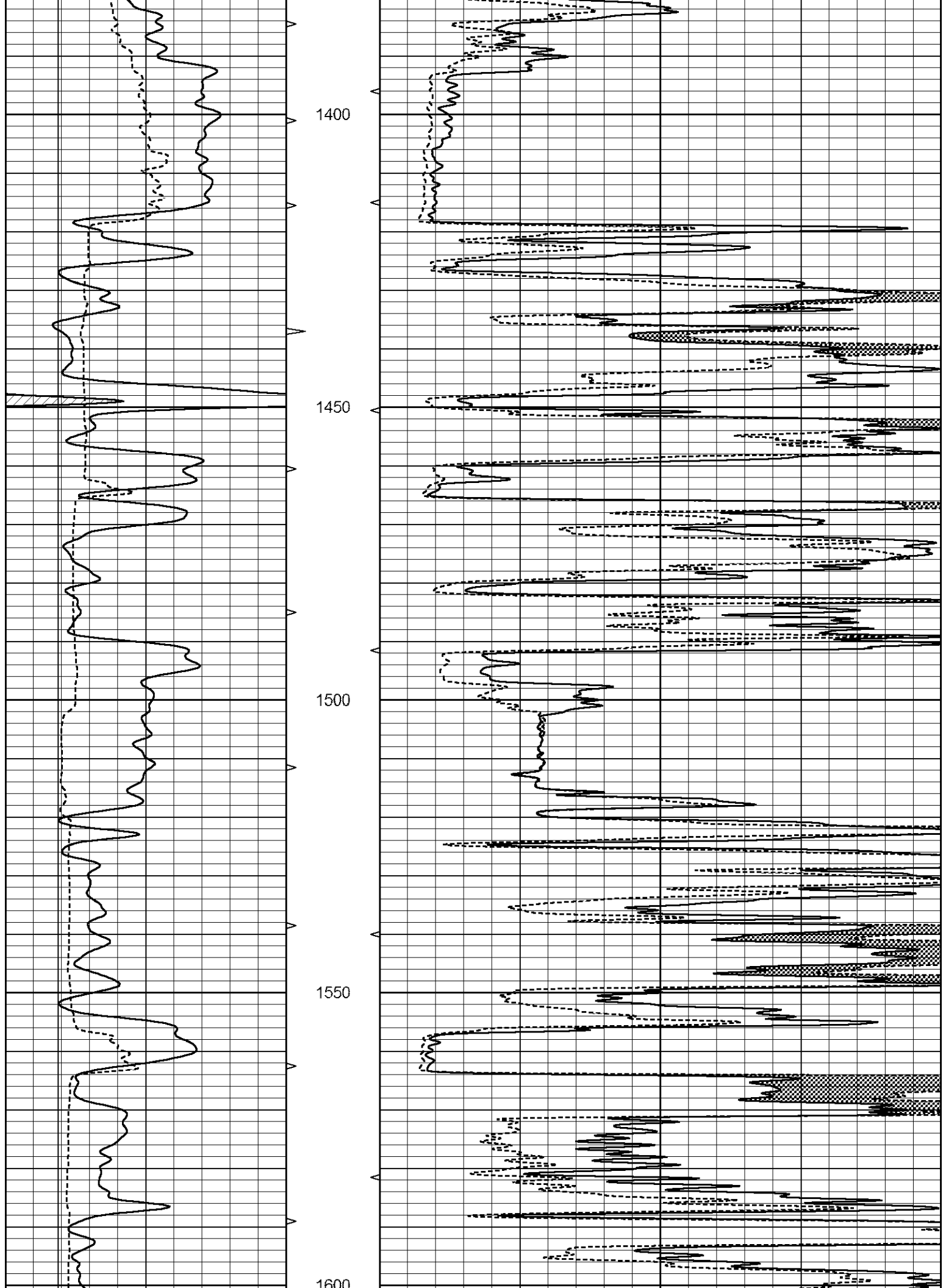
850

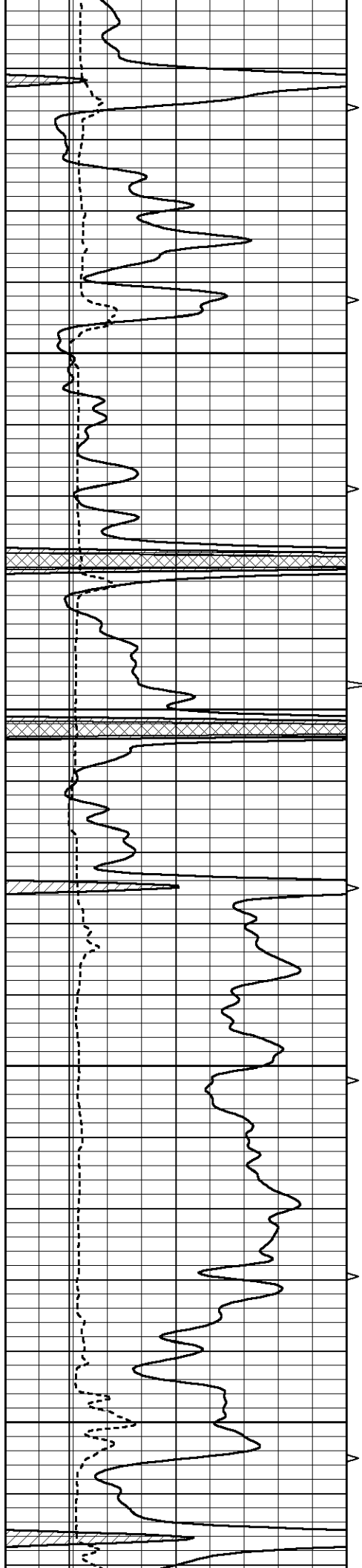
900



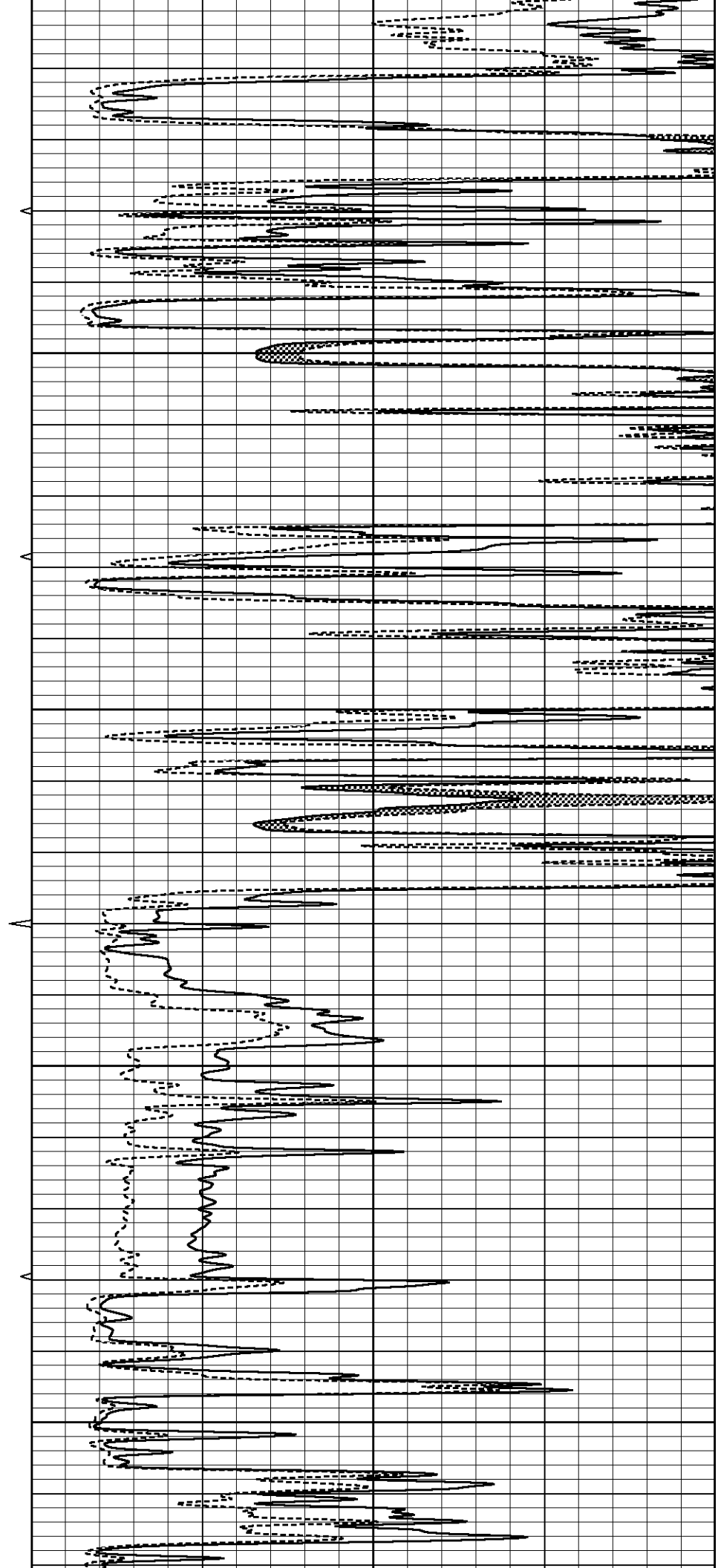


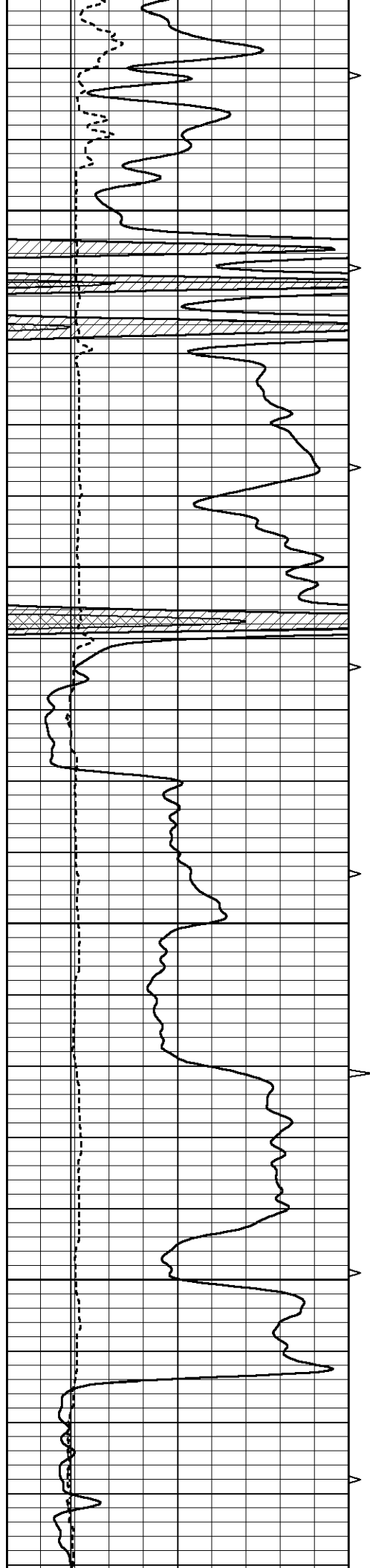






1650  
1700  
1750  
1800



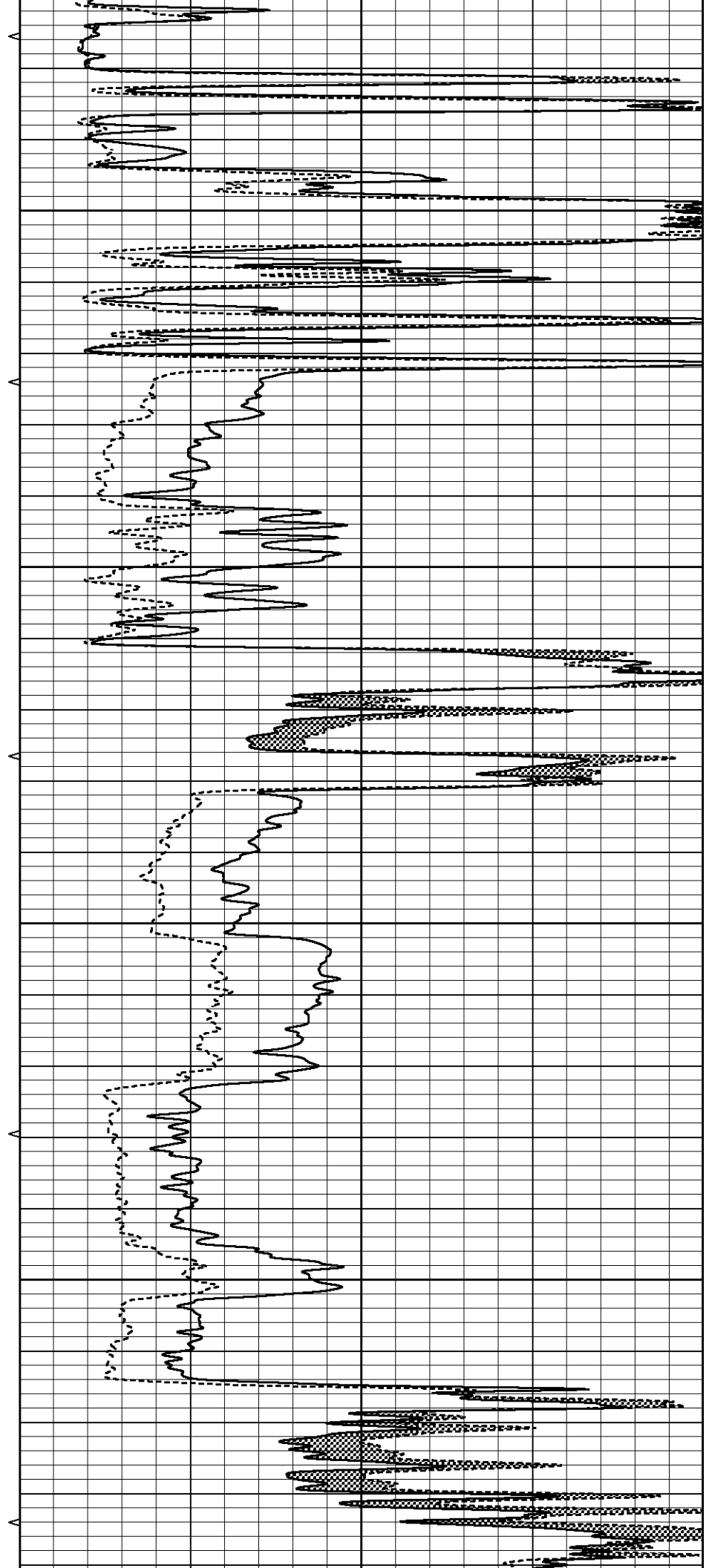


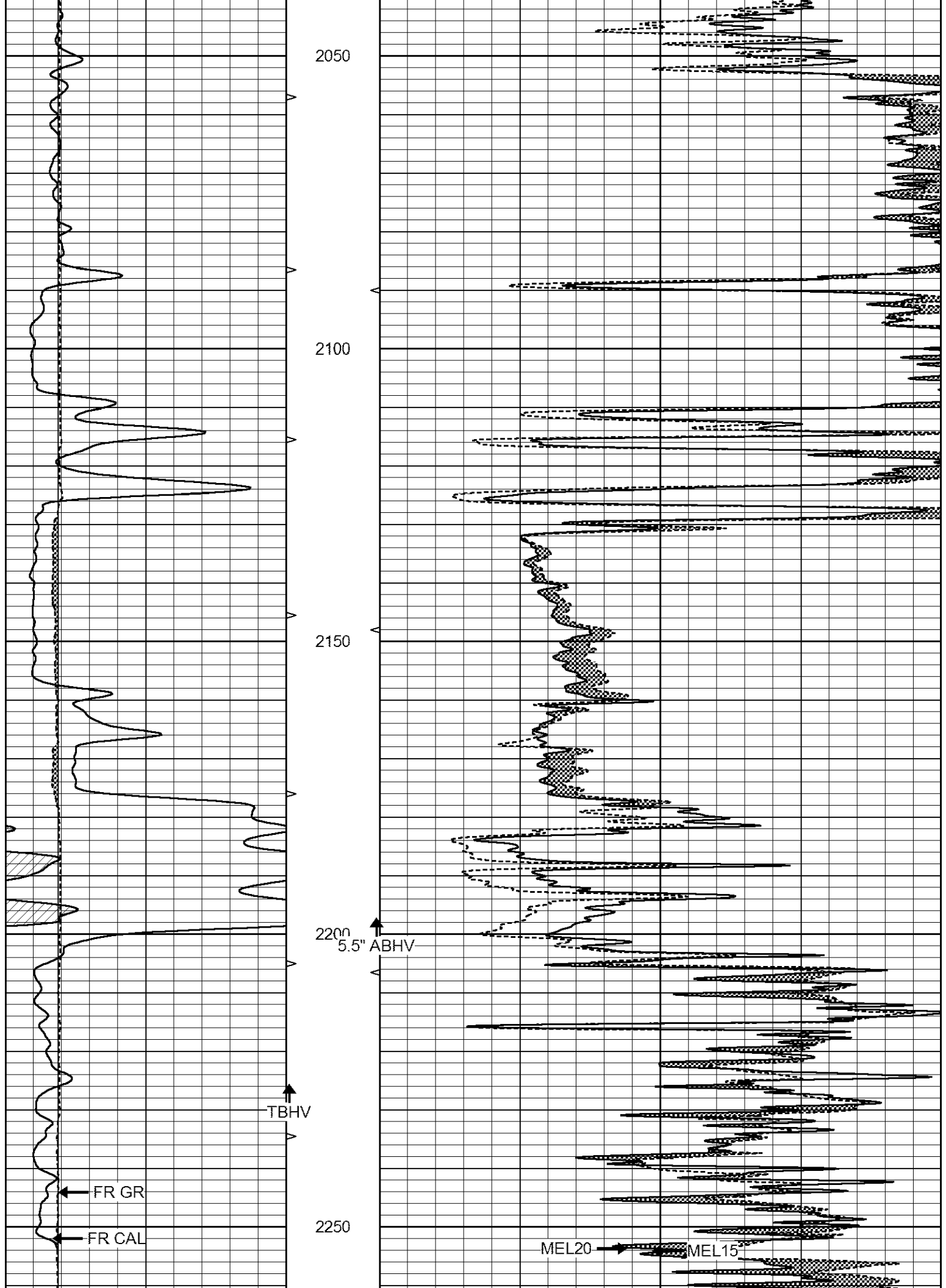
1850

1900

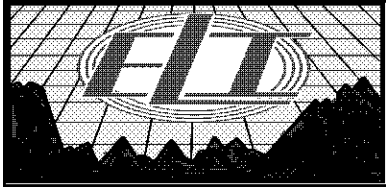
1950

2000





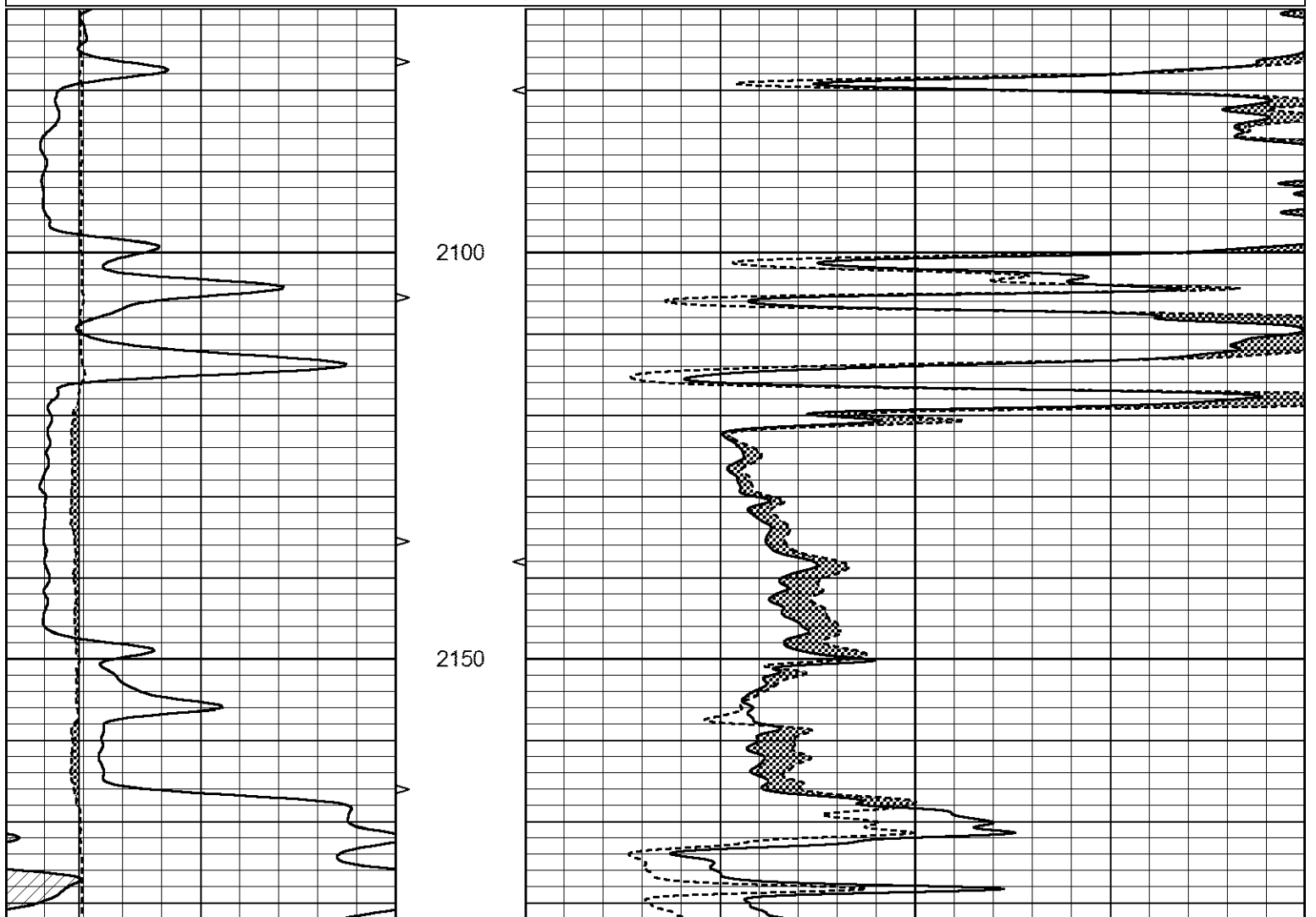
			LTD 2279			
0	GAMMA RAY (GAPI)	150	ABHV	0	MEL1.5 (Ohm-m)	40
6	CALIPER (in)	16	10 (ft3)	0 0	MEL2.0 (Ohm-m)	40
			TBHV			
			0 (ft3)	10		

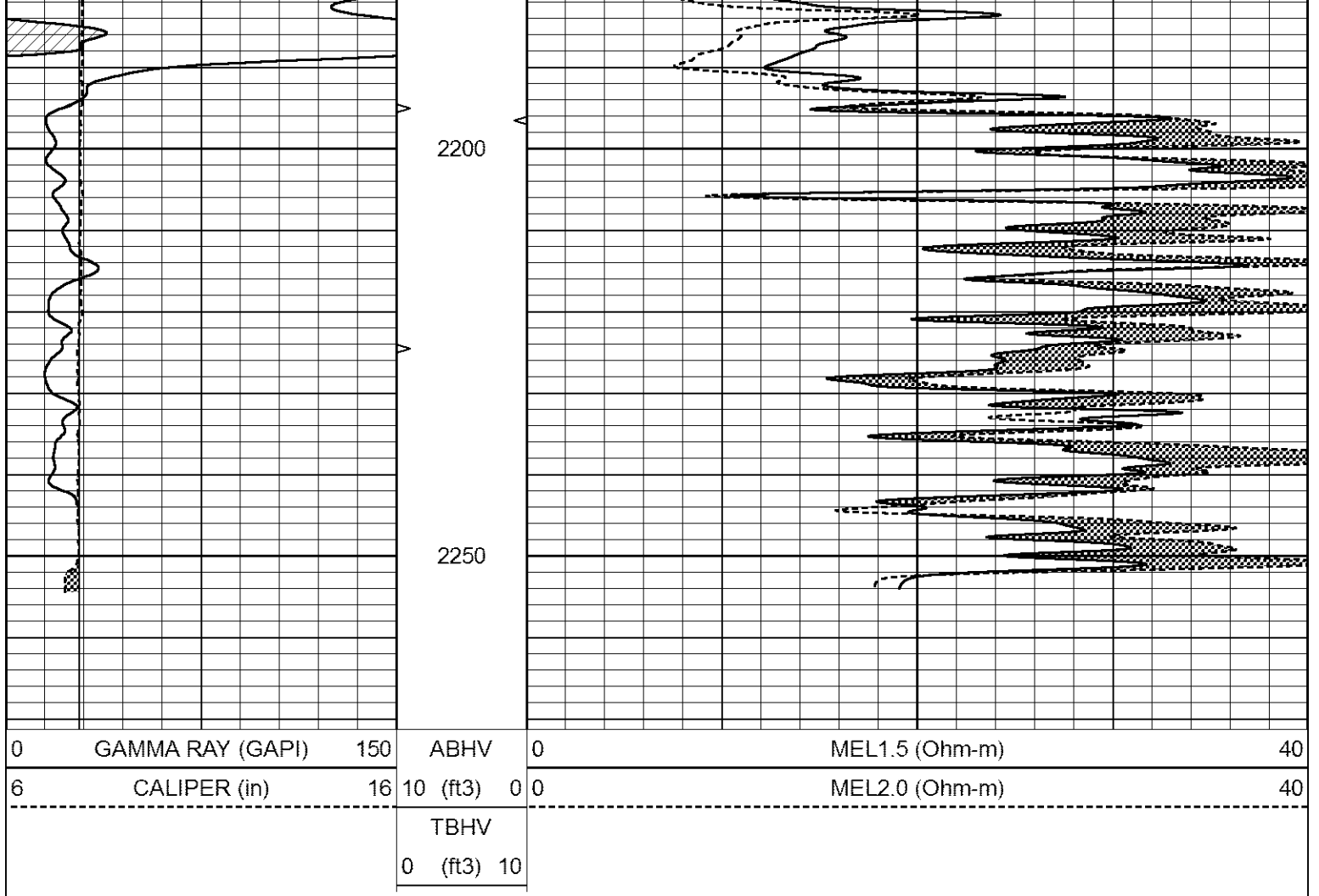


# REPEAT SECTION

Database File 6757pe.db  
 Dataset Pathname pass12CR.2  
 Presentation Format \_micro  
 Dataset Creation Fri Jul 15 18:51:26 2022  
 Charted by Depth in Feet scaled 1:240

0	GAMMA RAY (GAPI)	150	ABHV	0	MEL1.5 (Ohm-m)	40
6	CALIPER (in)	16	10 (ft3)	0 0	MEL2.0 (Ohm-m)	40
			TBHV			
			0 (ft3)	10		





### Calibration Report

Database File 6757pe.db  
 Dataset Pathname pass12CR  
 Dataset Creation Fri Jul 15 18:43:34 2022

### MICRO\_USR Calibration Report

Serial Number:	070911	
Tool Model:	ProbeL	
Performed:	Tue Dec 21 16:59:08 2021	
Caliper Calibration:	Gain=3.755	Offset=1.950
References	Low Cal 8.000	High Cal 14.000
Readings	1.451	3.049
1.5" Calibration:	Gain=22.000	Offset=0.750
References	Low Cal 0.000	High Cal 20.000
Readings	0.004	0.843
2" Calibration:	Gain=20.000	Offset=1.000
References	Low Cal 0.000	High Cal 20.000
Readings	0.021	0.810

### Microlog Calibration Report

Serial-Model: 070911-ProbeL

	Readings			References			Results	
	Zero	Cal		Zero	Cal		m	b
Normal	0.0002	0.4836	V	0.0000	10.0000	Ohm-m	20.6908	-0.0051
Inverse	0.0018	0.6297	V	0.0000	10.0000	Ohm-m	15.9263	-0.0282
Caliper	0.0000	1.0000	V	0.0000	1.0000	in	1.0000	0.0000

## Gamma Ray Calibration Report

Serial Number:	070558	
Tool Model:	Probe1	
Performed:	Sat Jul 02 05:55:58 2022	
Calibrator Value:	1.0	GAPI
Background Reading:	0.0	cps
Calibrator Reading:	1.0	cps
Sensitivity:	0.2600	GAPI/cps