

**SONIC
LOG**

Company **BLUERIDGE PETROLEUM CORPORATION**
 Well **STICE #2-2**
 Field **ALTA VISTA**
 County **WABAUNSEE** State **KANSAS**

Location: **API # : 15-197-20319-0000**
330' FSL & 641' FWL
E2 - SW - SW - SW
 SEC 2 TWP 14S RGE 8E
 Permanent Datum **GROUND LEVEL** Elevation **1496**
 Log Measured From **KELLY BUSHING 8' A.G.L**
 Drilling Measured From **KELLY BUSHING**

Company **BLUERIDGE PETROLEUM CORPORATION**
 Well **STICE #2-2**
 Field **ALTA VISTA**
 County **WABAUNSEE**
 State **KANSAS**

Date	7/15/22		
Run Number	TWO		
Depth Driller	2280		
Depth Logger	2279		
Bottom Logged Interval	2271		
Top Log Interval	300		
Casing Driller	8 5/8" @ 327		
Casing Logger	340		
Bit Size	7 7/8		
Type Fluid in Hole	CHEMICAL MUD	CHLORIDES 700 PPM	
Density / Viscosity	9.2/48		
pH / Fluid Loss	9.5/10.0		
Source of Sample	FLOWLINE		
Rm @ Meas. Temp	1.50 @ 85F		
Rmt @ Meas. Temp	1.13 @ 85F		
Rmc @ Meas. Temp	1.80 @ 85F		
Source of Rmf / Rmc	MEASUREMENT		
Rm @ BHT	1.26 @ 101F		
Time Circulation Stopped	4 HOURS		
Time Logger on Bottom	3:30 P.M.		
Maximum Recorded Temperature	101F		
Equipment Number	3802		
Location	HAYS, KANSAS		
Recorded By	COLE ROBBEN		
Witnessed By	JIM MUSGROVE		

<<< Fold Here >>>

All interpretations are opinions based on inferences from electrical or other measurements and we cannot and do not guarantee the accuracy or correctness of any interpretation, and we shall not, except in the case of gross or willful negligence on our part, be liable or responsible for any loss, costs, damages, or expenses incurred or sustained by anyone resulting from any interpretation made by any of our officers, agents or employees. These interpretations are also subject to our general terms and conditions set out in our current Price Schedule.

Comments

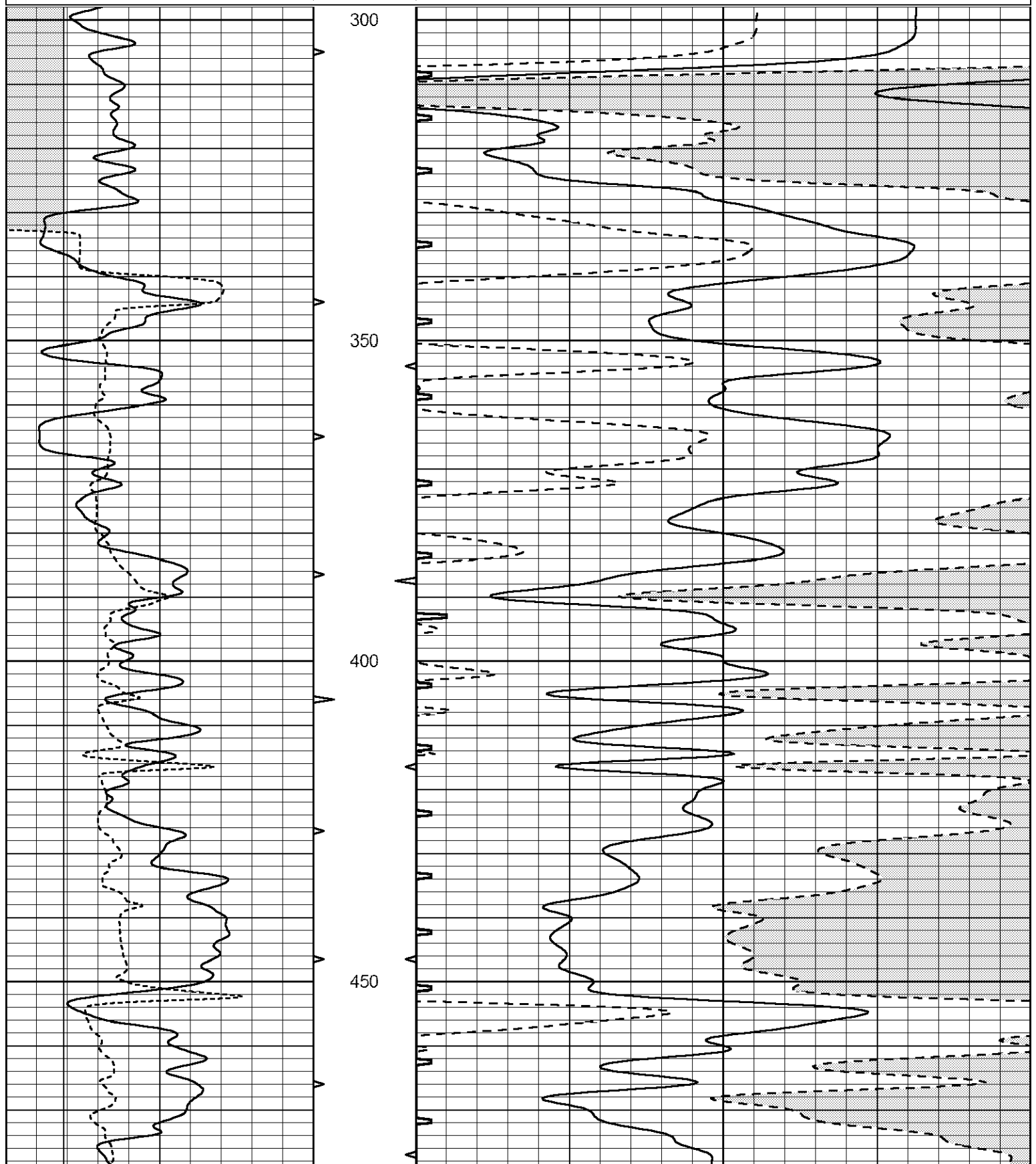
THANK YOU FOR USING ELI WIRELINE SERVICES, HAYS, KS. (785) 628-6395
 DIRECTIONS:
 I-70 EXIT #313 (MANHATTAN/COUNCIL GROVE) 15 MILES SOUTH TO HIGHWAY 4 (ALTA VISTA),
 EAST 1/8TH MILE, NORTH INTO

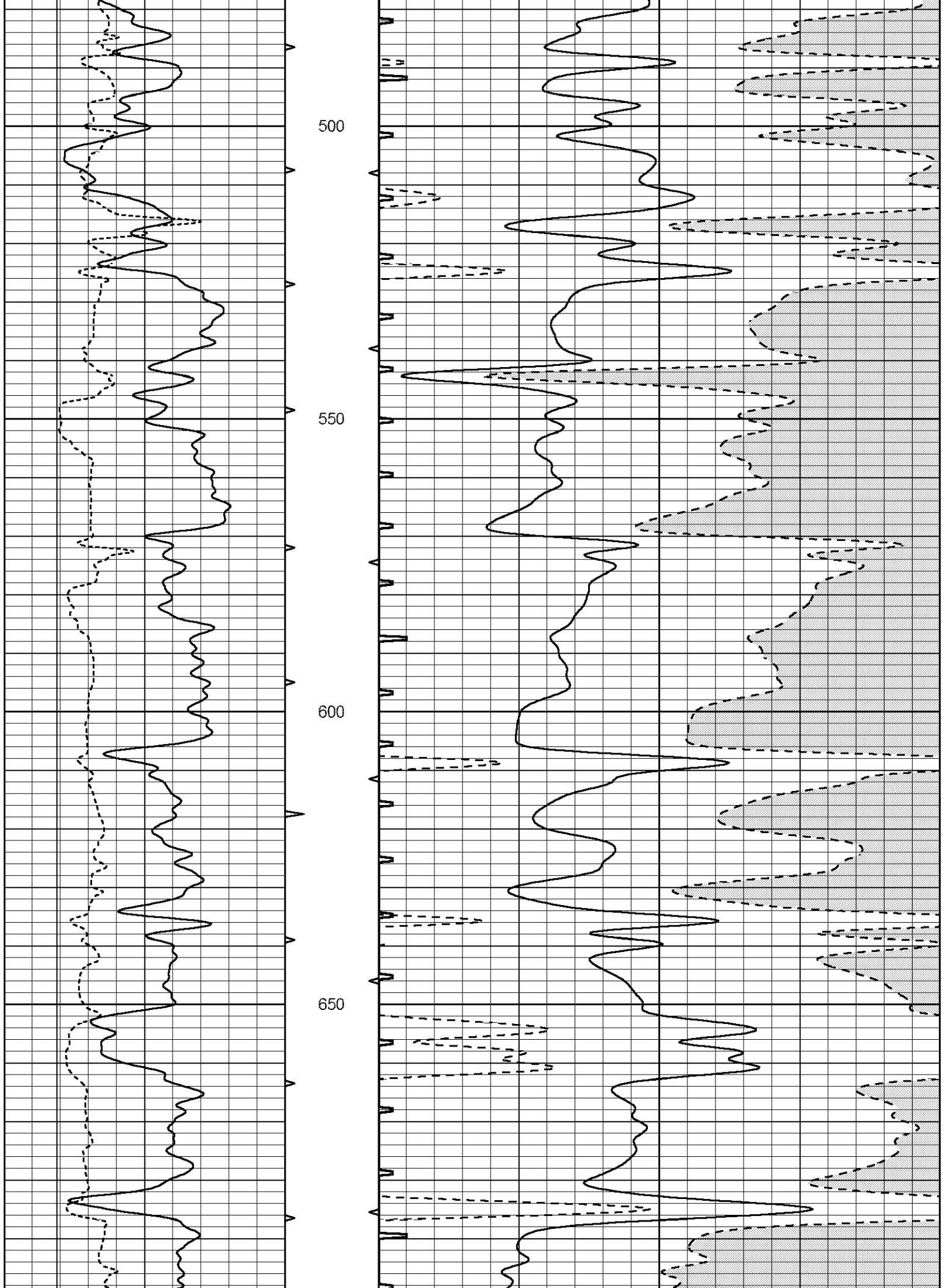


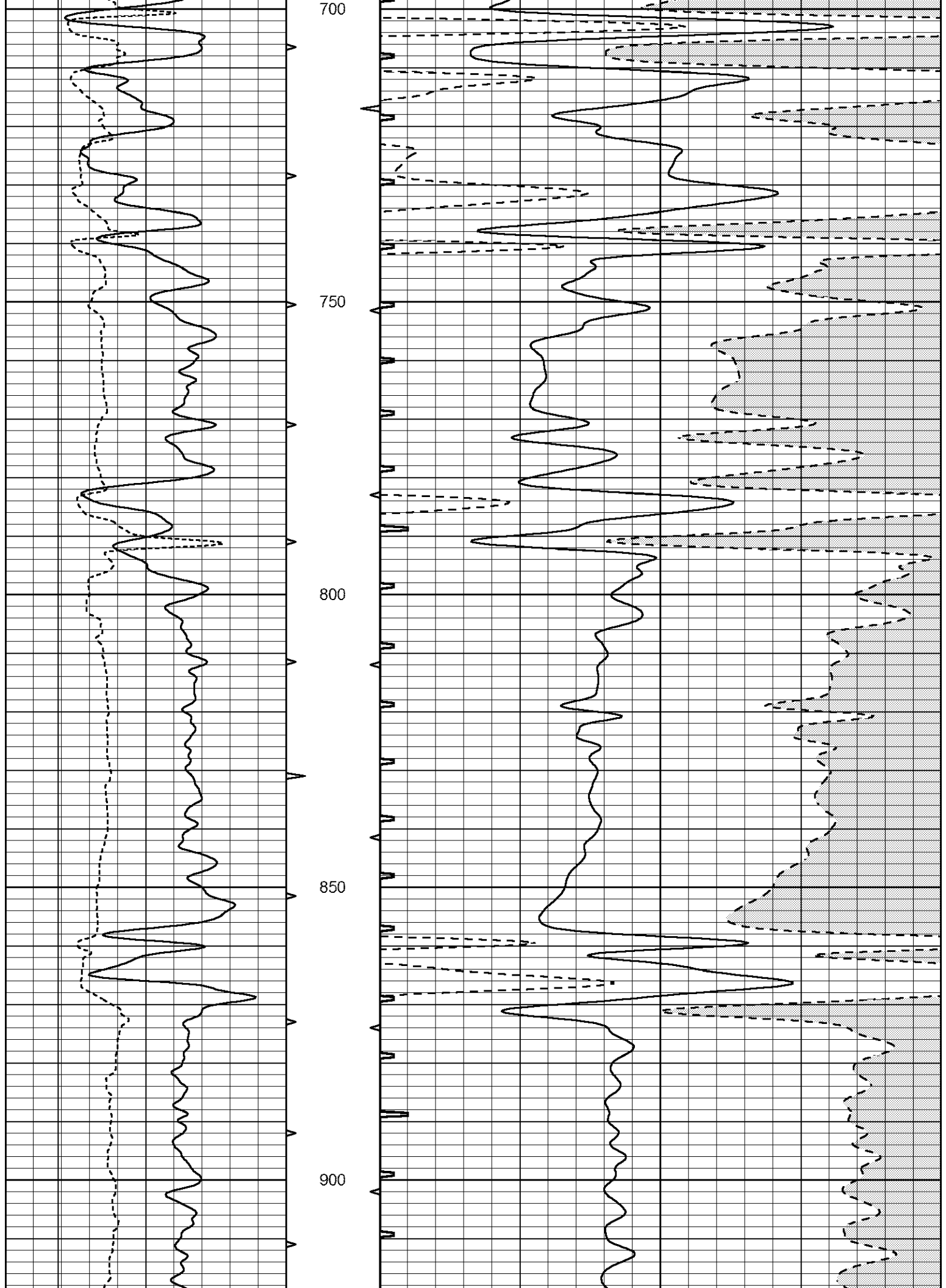
MAIN SECTION

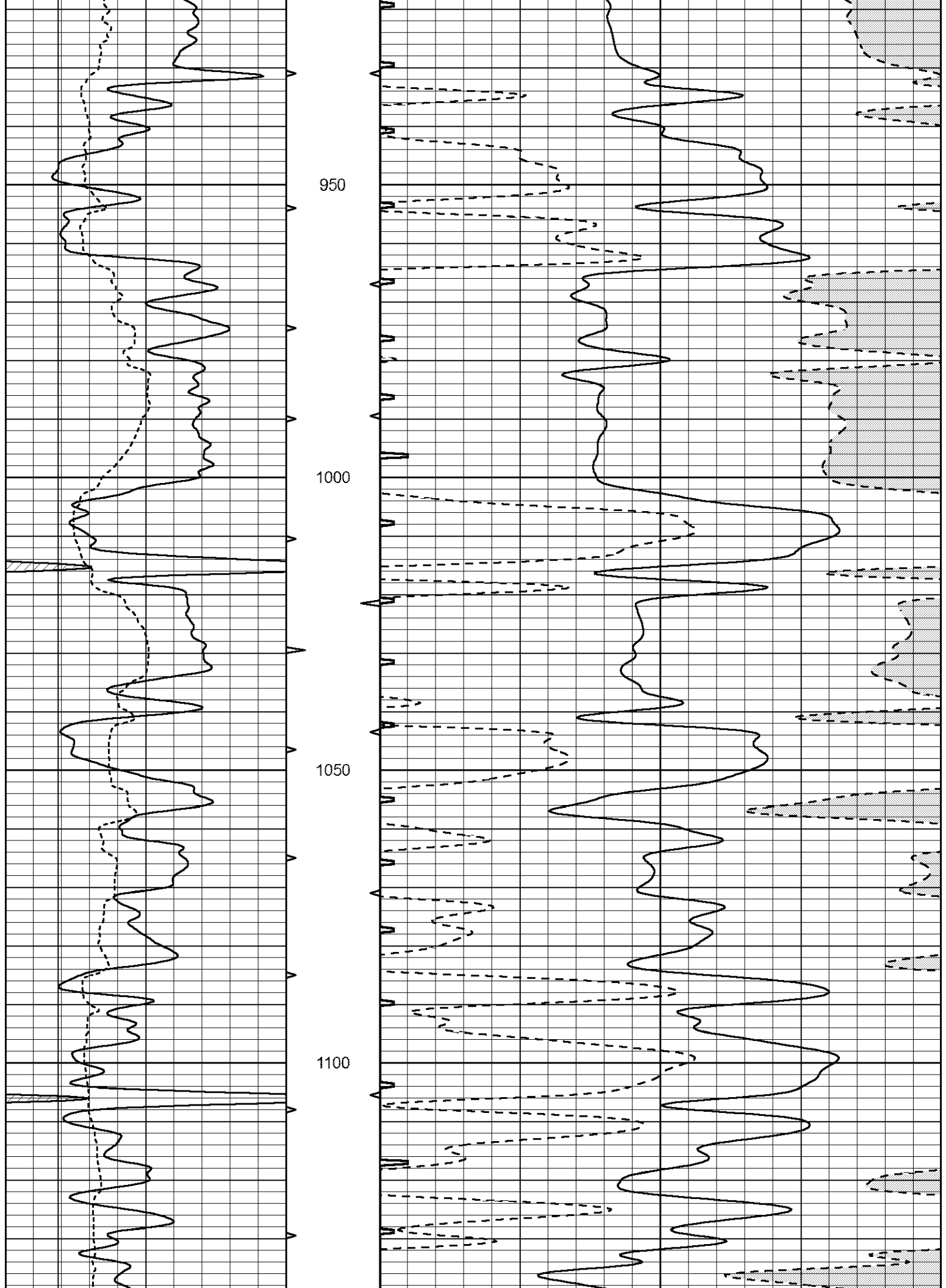
Database File 6757pe.db
 Dataset Pathname pass12CR
 Presentation Format _slt
 Dataset Creation Fri Jul 15 18:43:34 2022
 Charted by Depth in Feet scaled 1:240

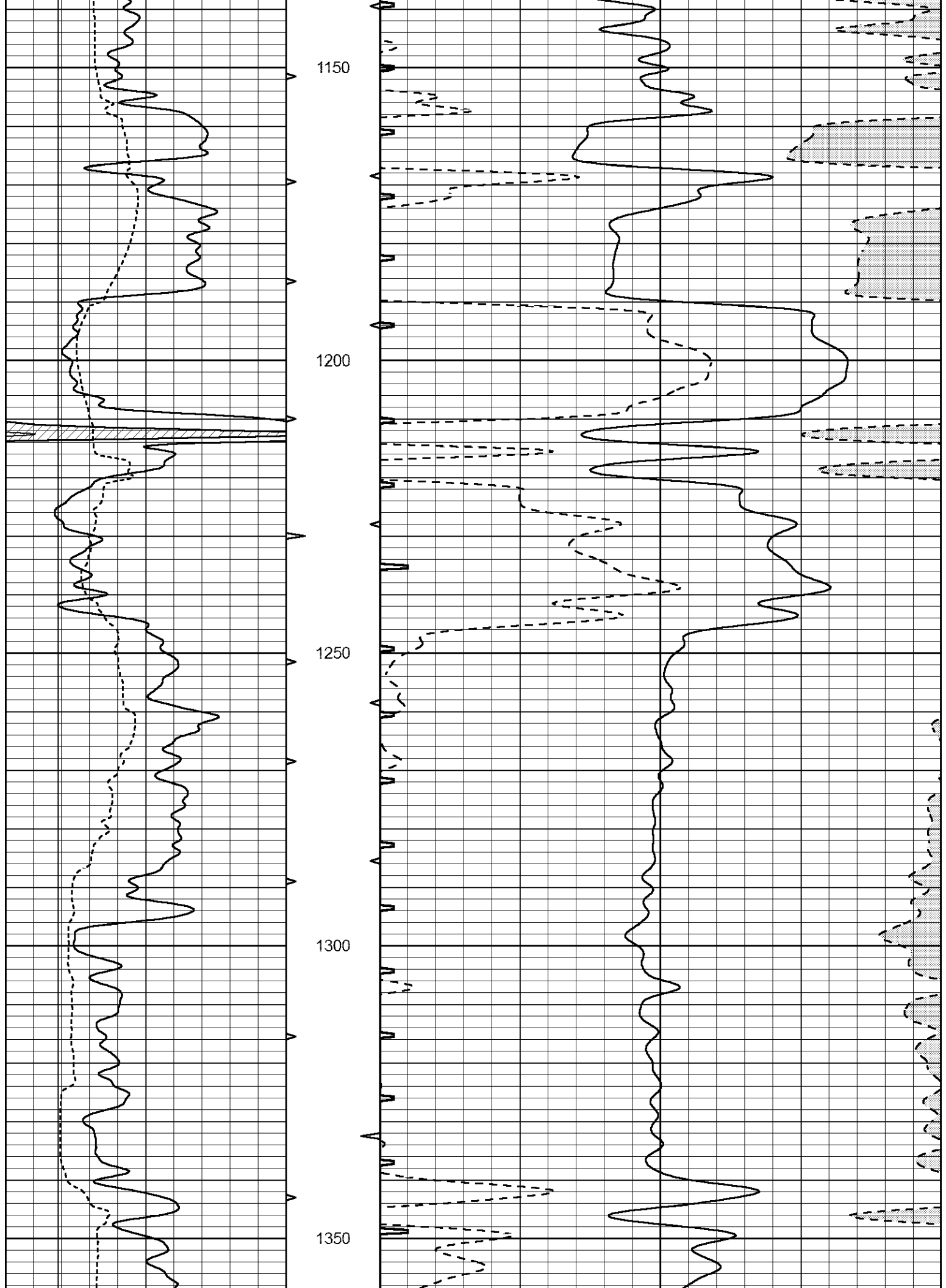
0	GAMMA RAY (GAPI)	150	ABHV	140	DELTA TIME (usec/ft)	40	
6	CALIPER (in)	16	10 (ft3)	0	30	SONIC POROSITY (pu)	-10
			TBHV	0	ITT (msec)	20	
			0 (ft3)	10			

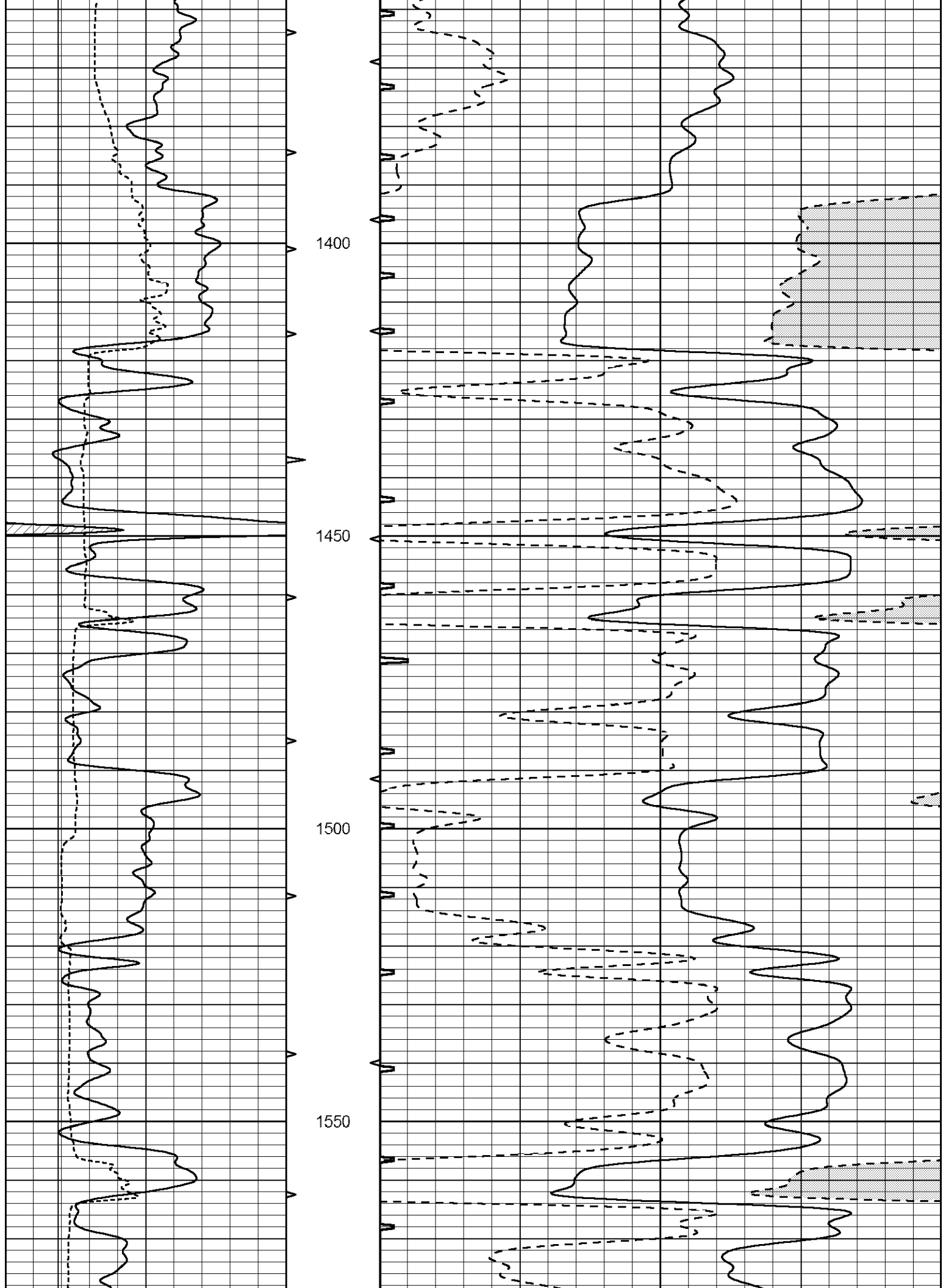


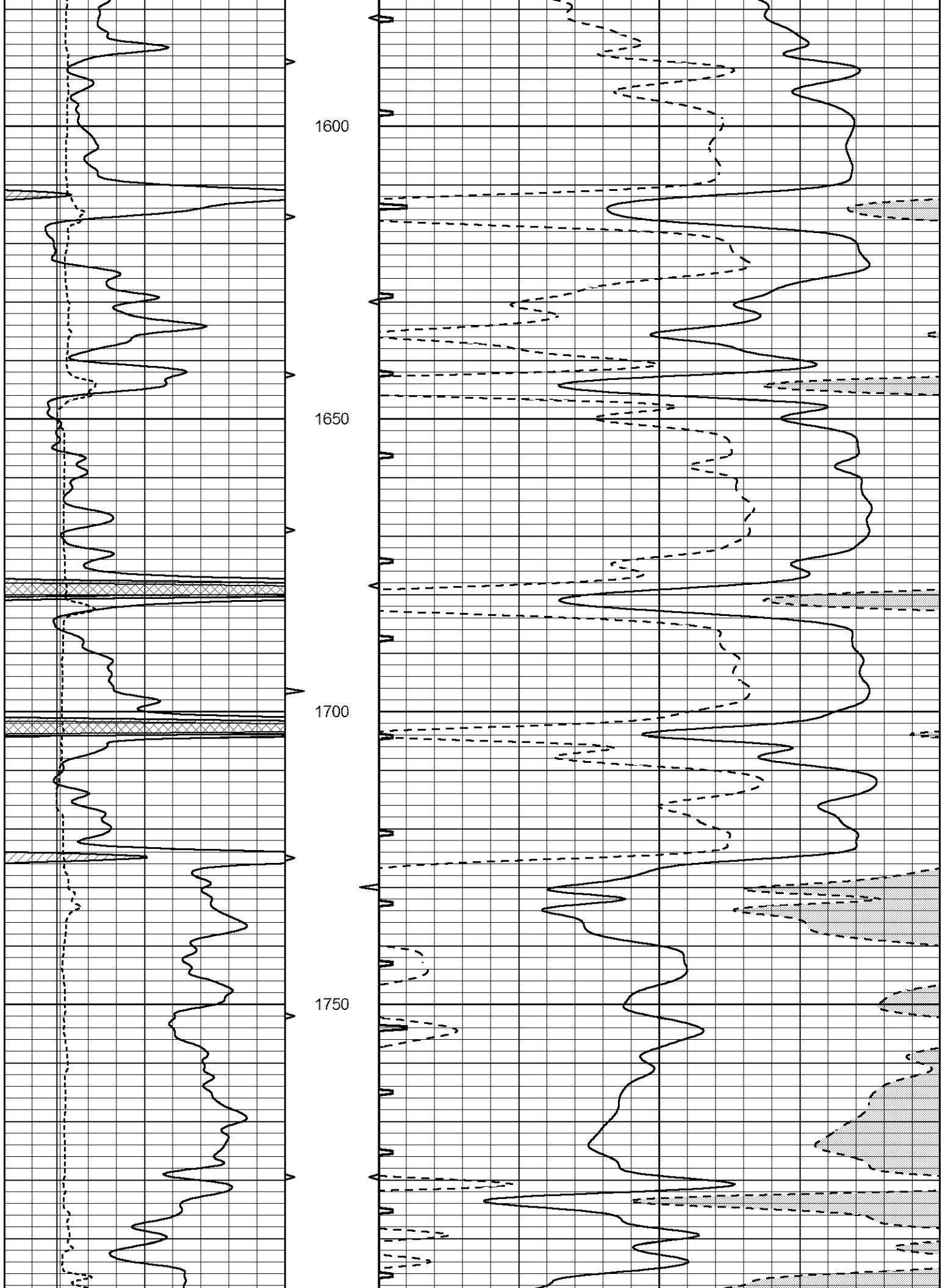


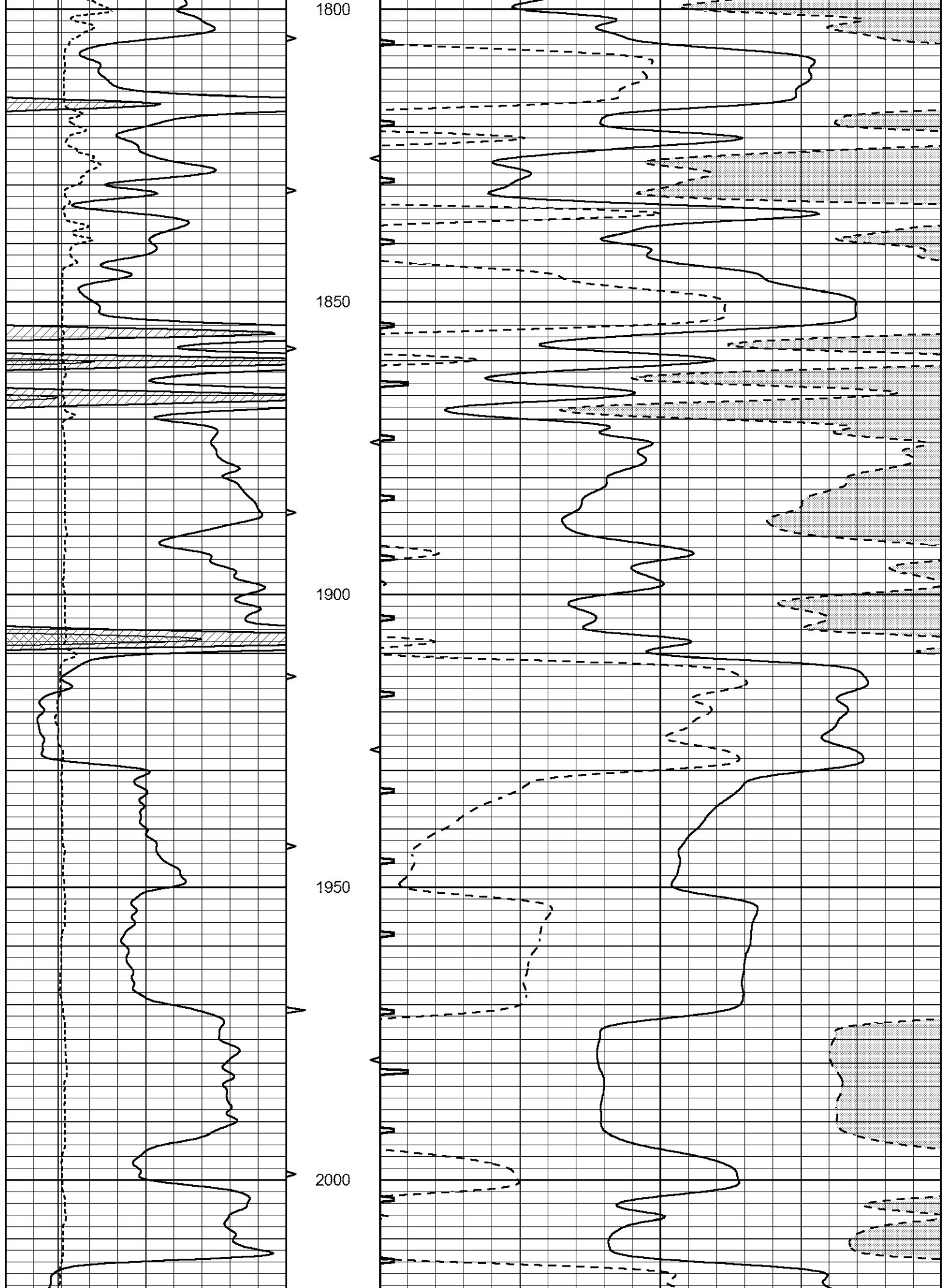


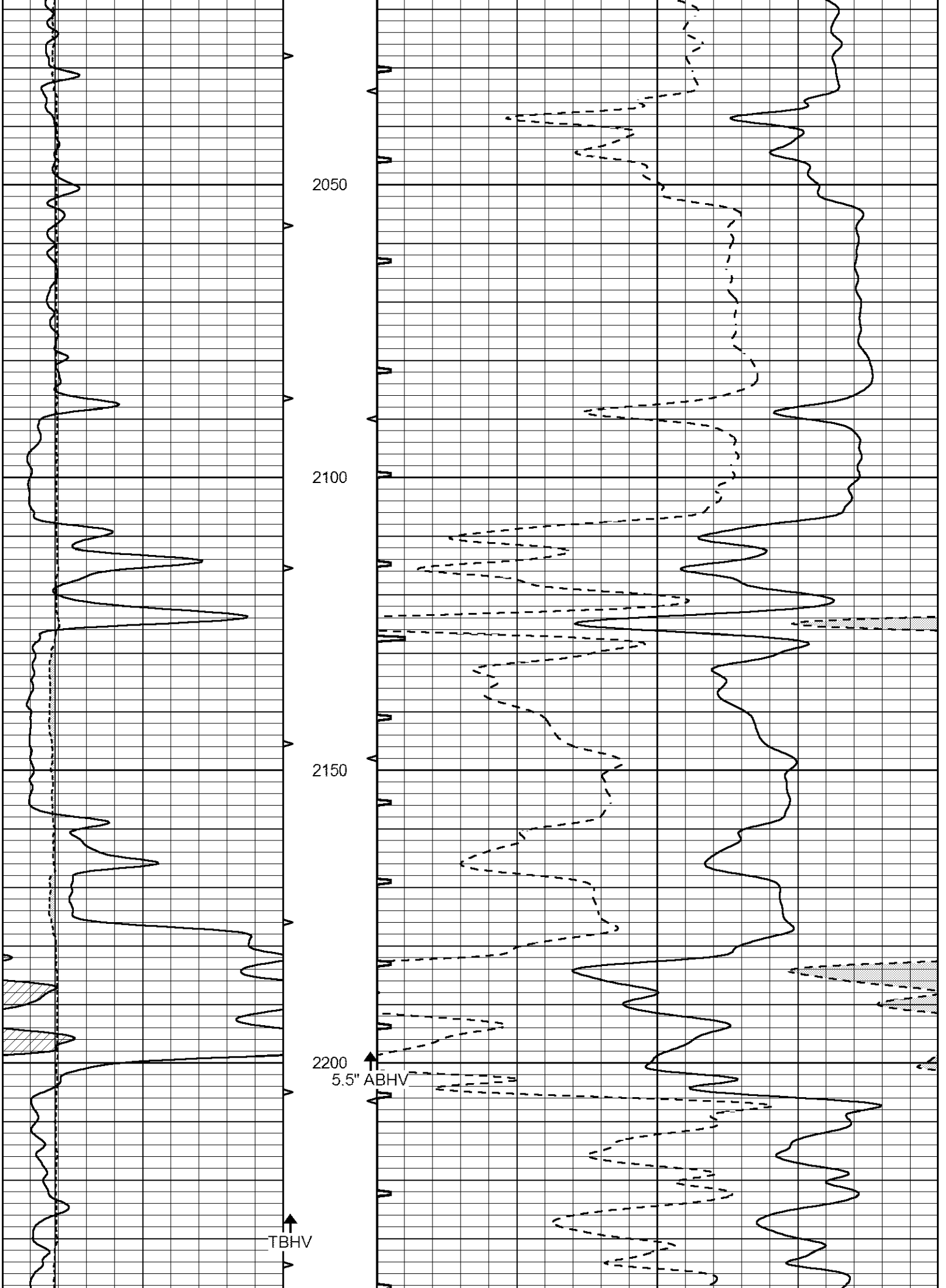


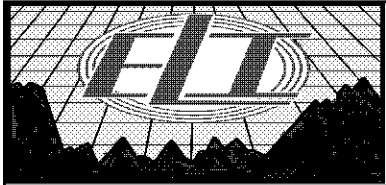
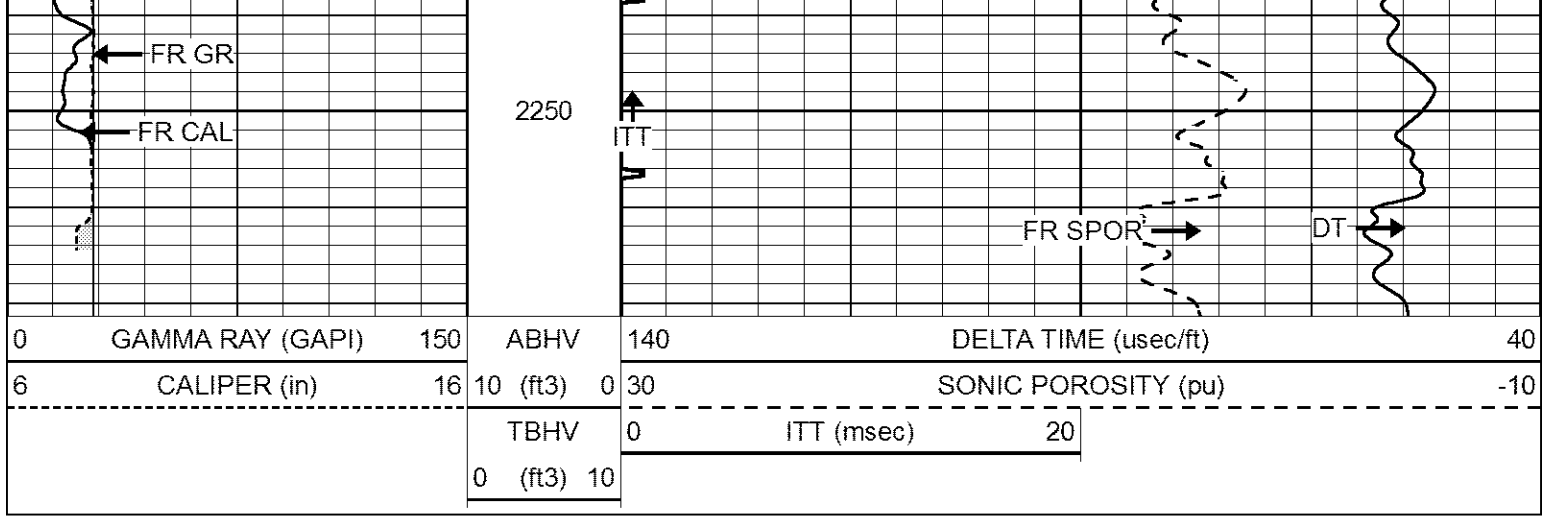






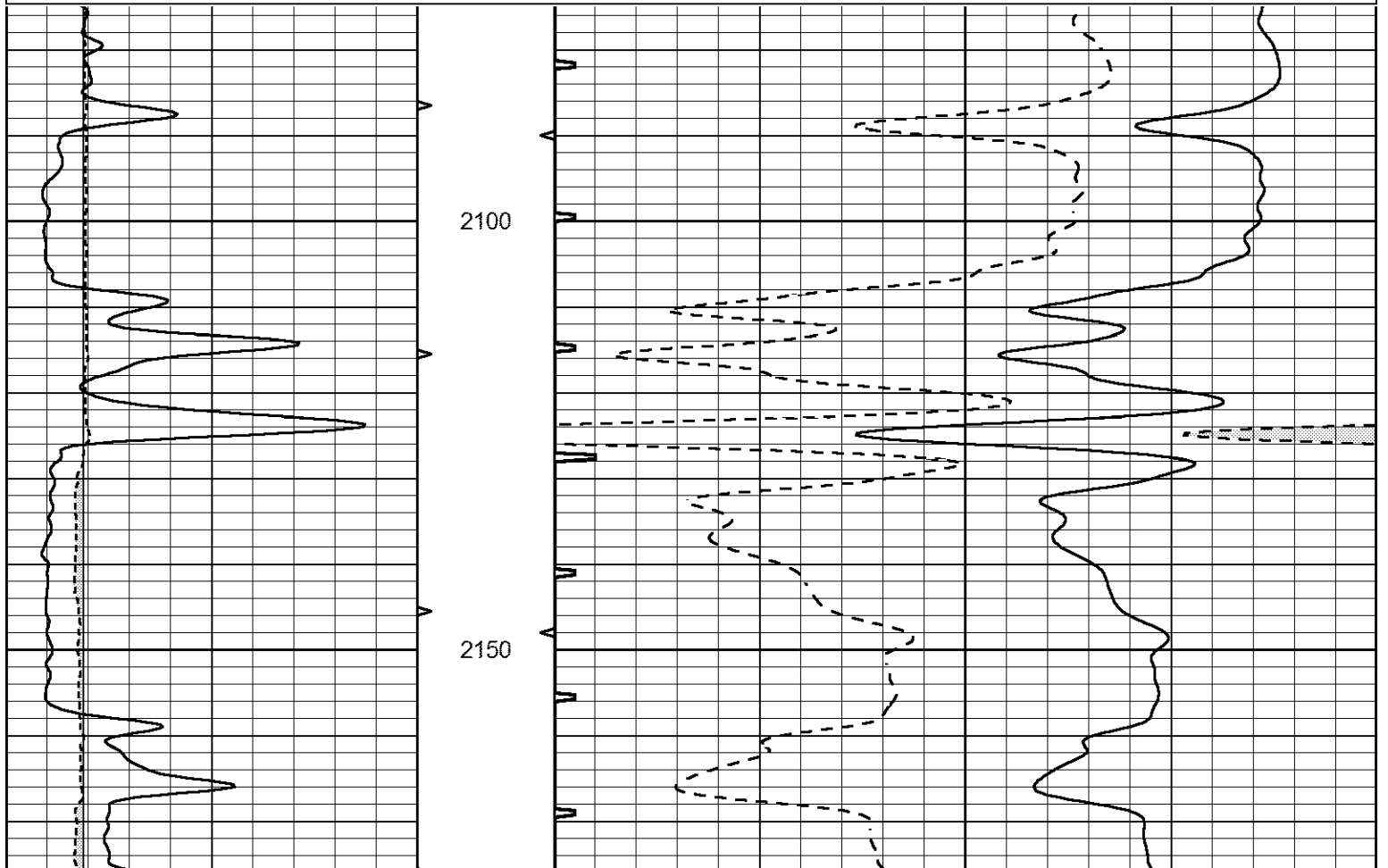
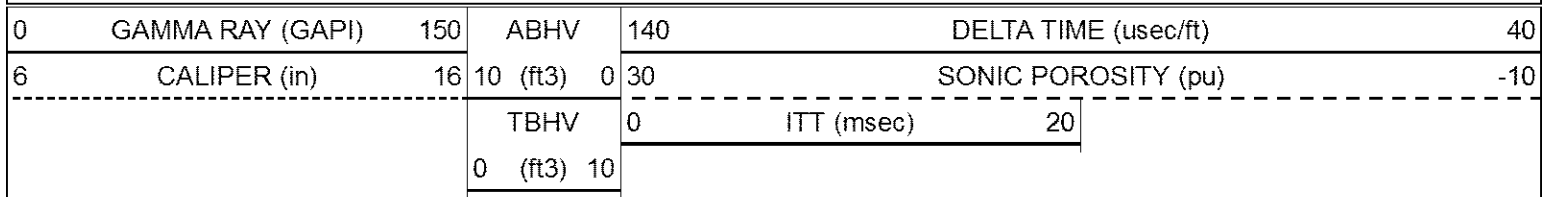


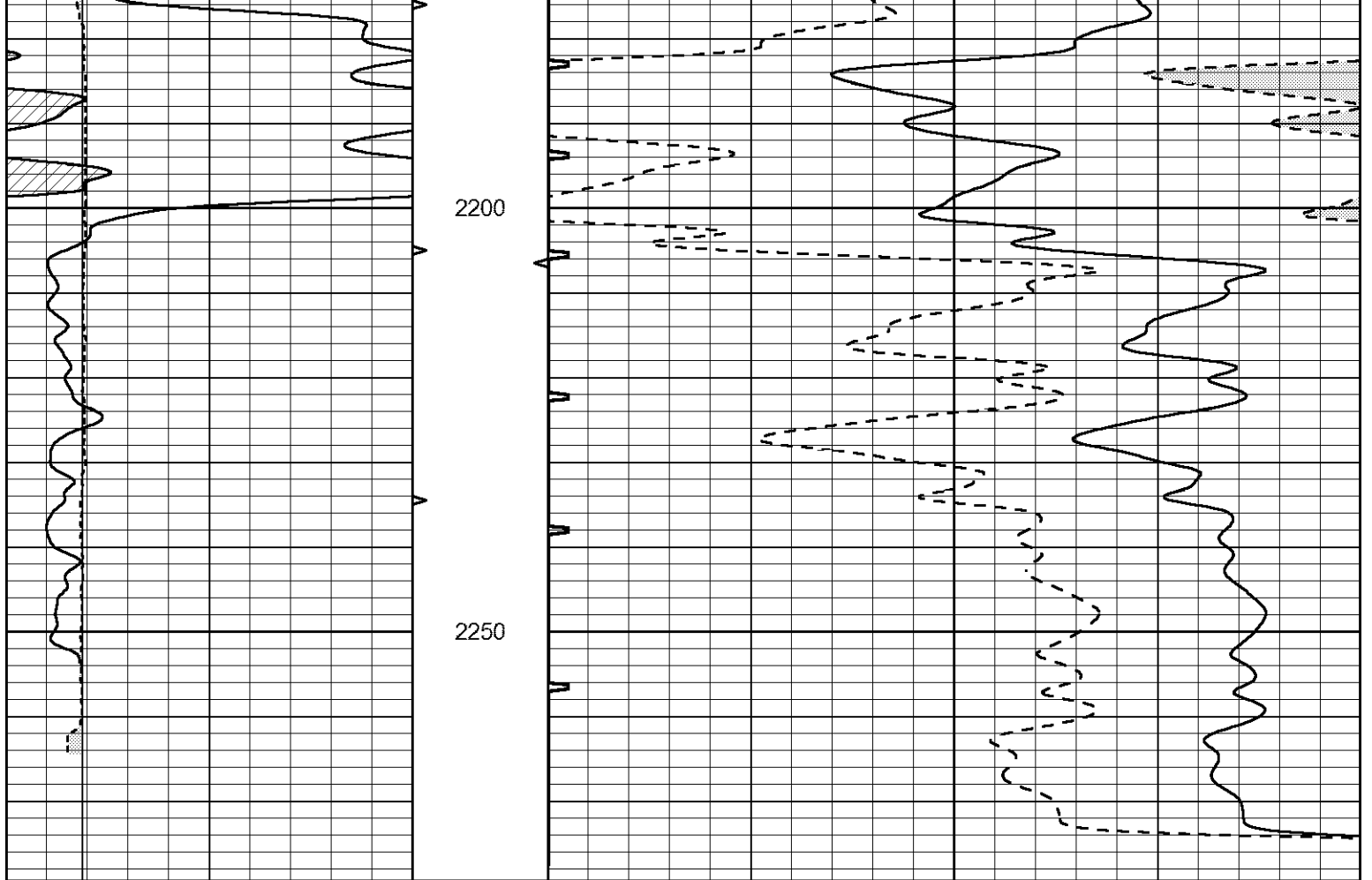




REPEAT SECTION

Database File 6757pe.db
 Dataset Pathname pass12.25
 Presentation Format _slt
 Dataset Creation Fri Jul 15 17:44:34 2022
 Charted by Depth in Feet scaled 1:240





0	GAMMA RAY (GAPI)	150	ABHV	140	DELTA TIME (usec/ft)	40
6	CALIPER (in)	16	10 (ft3) 0	30	SONIC POROSITY (pu)	-10
			TBHV	0	ITT (msec)	20
			0 (ft3) 10			