

**COMPENSATED
DENSITY/NEUTRON
PE LOG**

Company **BLUERIDGE PETROLEUM CORPORATION**
 Well **STICE #2-2**
 Field **ALTA VISTA**
 County **WABAUNSEE** State **KANSAS**

Location: **API # : 15-197-20319-0000**
330' FSL & 641' FWL
E2 - SW - SW - SW
 SEC 2 TWP 14S RGE 8E
 Permanent Datum **GROUND LEVEL Elevation 1496**
 Log Measured From **KELLY BUSHING 8' A.G.L**
 Drilling Measured From **KELLY BUSHING**
 Other Services **DILMEL SONIC**
 Elevation **K.B. 1504 D.F. 1502 G.L. 1496**

Date	7/15/22		
Run Number	ONE		
Depth Driller	2280		
Depth Logger	2279		
Bottom Logged Interval	2255		
Top Log Interval	340		
Casing Driller	8 5/8" @ 327		
Casing Logger	340		
Bit Size	7 7/8		
Type Fluid in Hole	CHEMICAL MUD	CHLORIDES 700 PPM	
Density / Viscosity	9.2/48		
PH / Fluid Loss	9.5/10.0		
Source of Sample	FLOWLINE		
Rm @ Meas. Temp	1.50 @ 85F		
Rmt @ Meas. Temp	1.13 @ 85F		
Rmc @ Meas. Temp	1.80 @ 85F		
Source of Rmf / Rmc	MEASUREMENT		
Rm @ BHT	1.26 @ 101F		
Time Circulation Stopped	2 HOURS		
Time Logger on Bottom	1:30 P.M.		
Maximum Recorded Temperature	101F		
Equipment Number	3802		
Location	HAYS, KANSAS		
Recorded By	COLE ROBBEN		
Witnessed By	JIM MUSGROVE		

<<< Fold Here >>>

All interpretations are opinions based on inferences from electrical or other measurements and we cannot and do not guarantee the accuracy or correctness of any interpretation, and we shall not, except in the case of gross or willful negligence on our part, be liable or responsible for any loss, costs, damages, or expenses incurred or sustained by anyone resulting from any interpretation made by any of our officers, agents or employees. These interpretations are also subject to our general terms and conditions set out in our current Price Schedule.

Comments

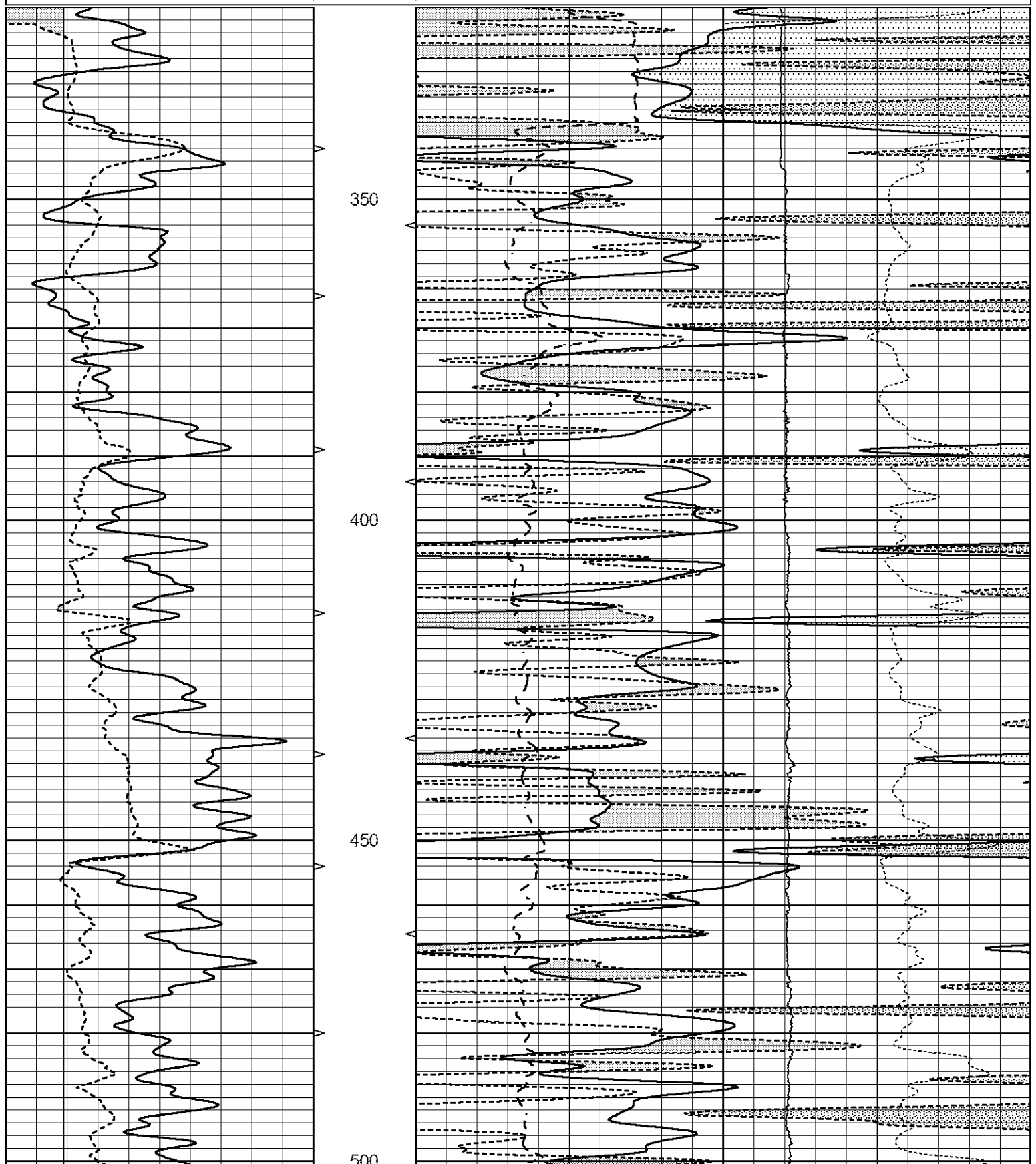
THANK YOU FOR USING ELI WIRELINE SERVICES, HAYS, KS. (785) 628-6395
DIRECTIONS:
I-70 EXIT #313 (MANHATTAN/COUNCIL GROVE) 15 MILES SOUTH TO HIGHWAY 4 (ALTA VISTA),
EAST 1/8TH MILE, NORTH INTO

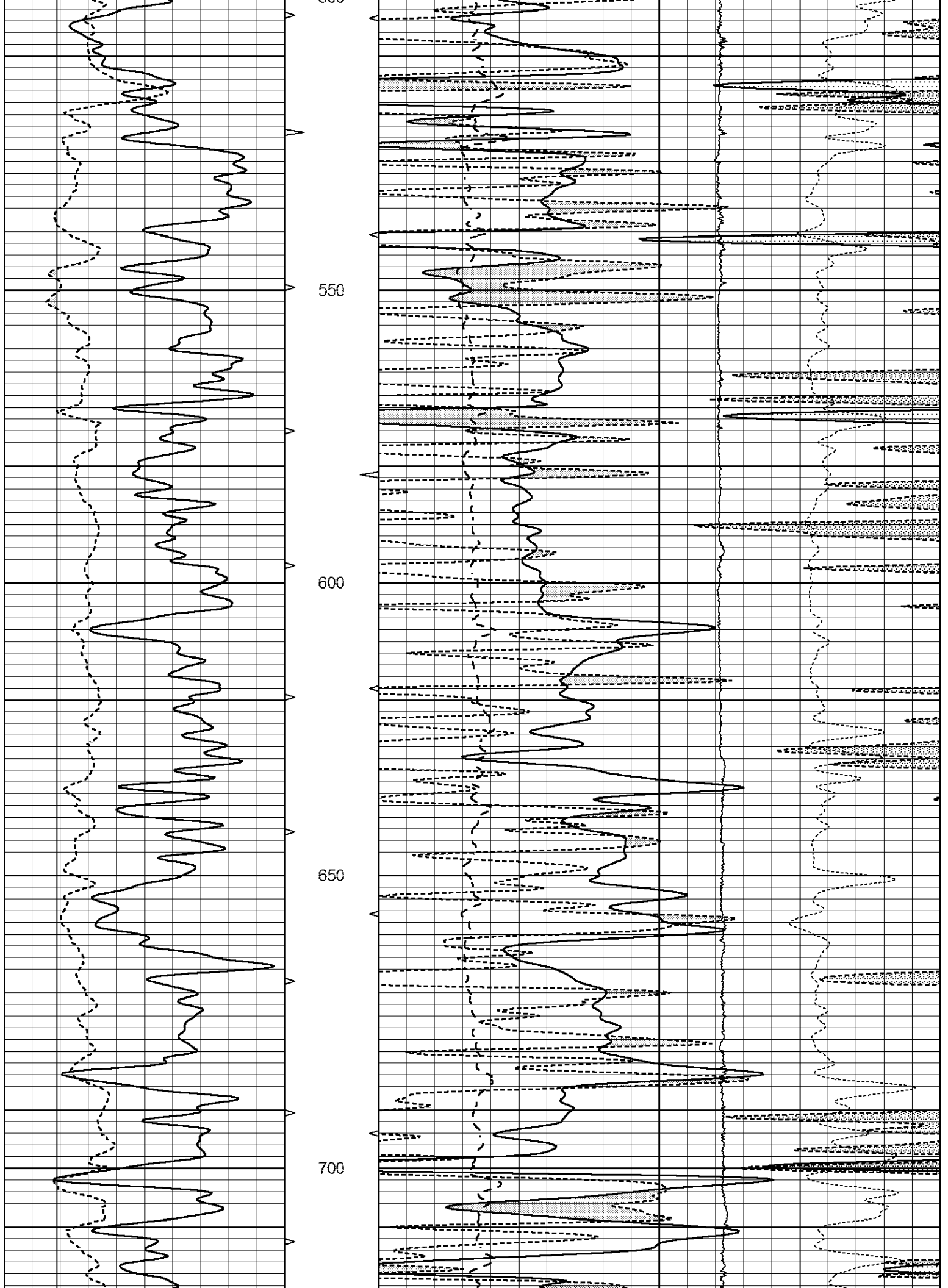


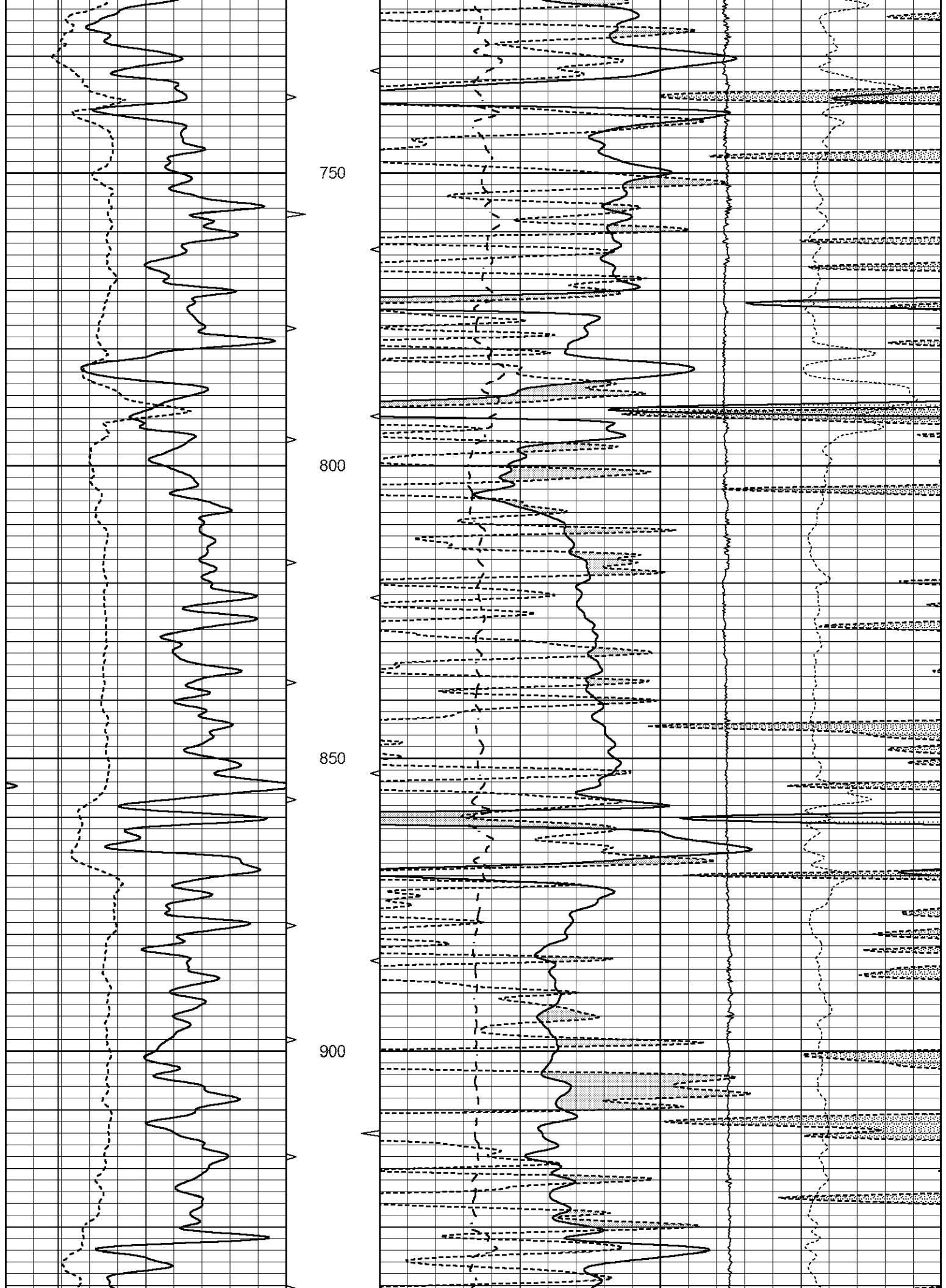
MAIN SECTION

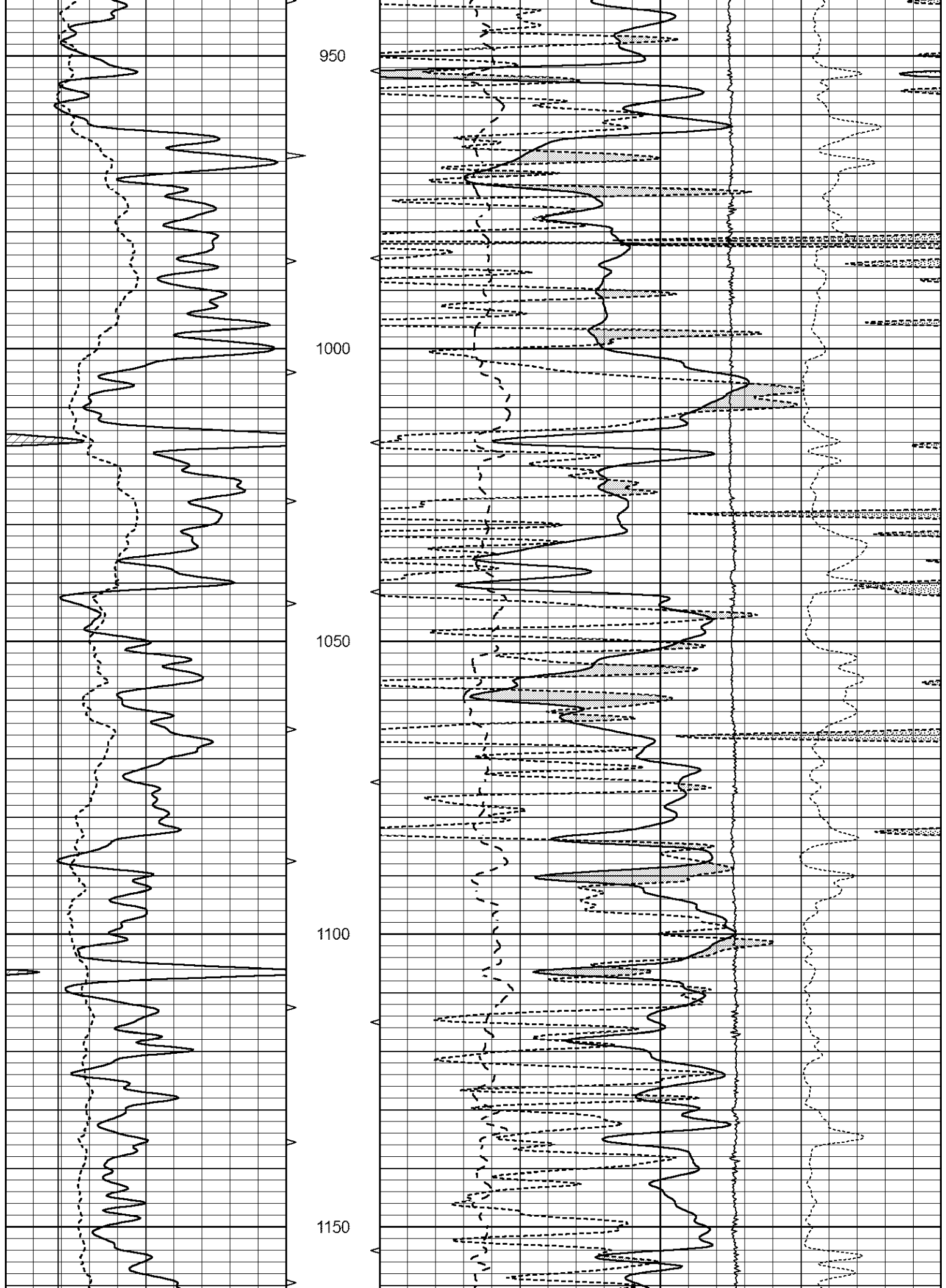
Database File 6757pe.db
 Dataset Pathname pass3M
 Presentation Format _ldt_neu
 Dataset Creation Fri Jul 15 15:41:30 2022
 Charted by Depth in Feet scaled 1:240

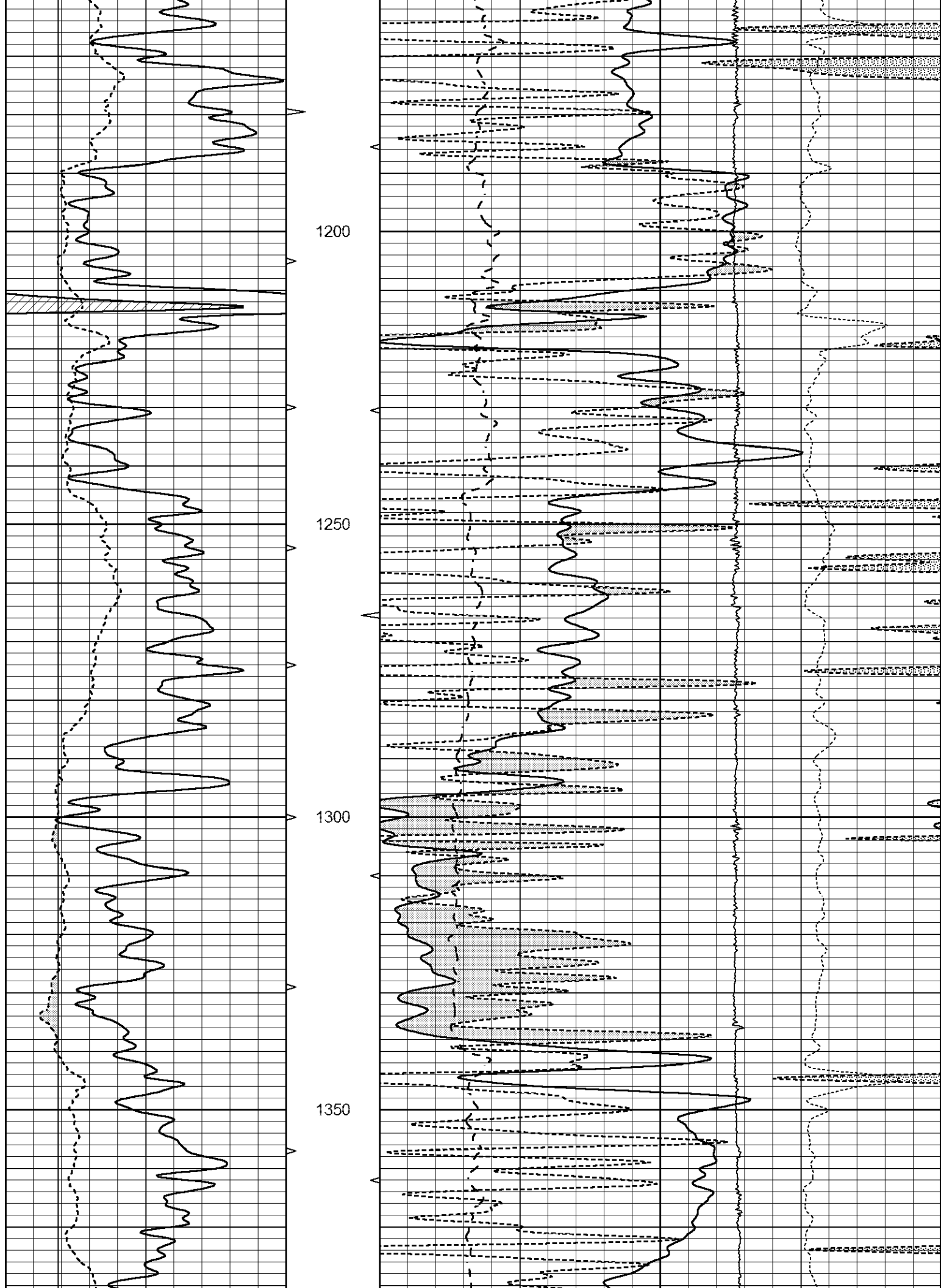
0	GAMMA RAY (GAPI)	150	ABHV	30	COMPENSATED DENSITY (pu)		-10
6	CALIPER (in)	16	10 (ft3)	0	COMPENSATED NEUTRON (pu)		-10
			TBHV	0	PE	10	-0.25
			0 (ft3)	10	CORRECTION (g/cc)		0.25
					0	LTEN (lb)	5000

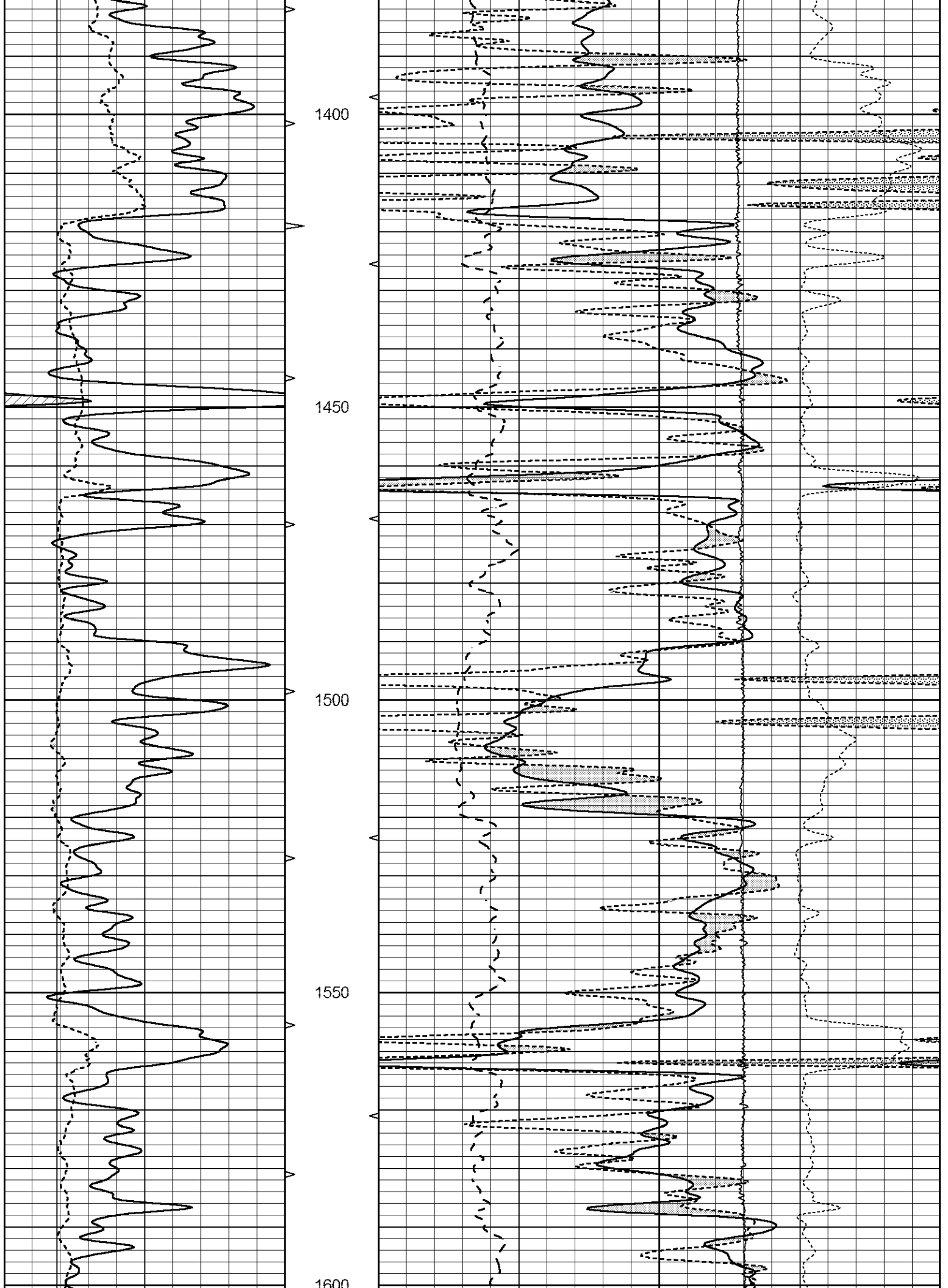


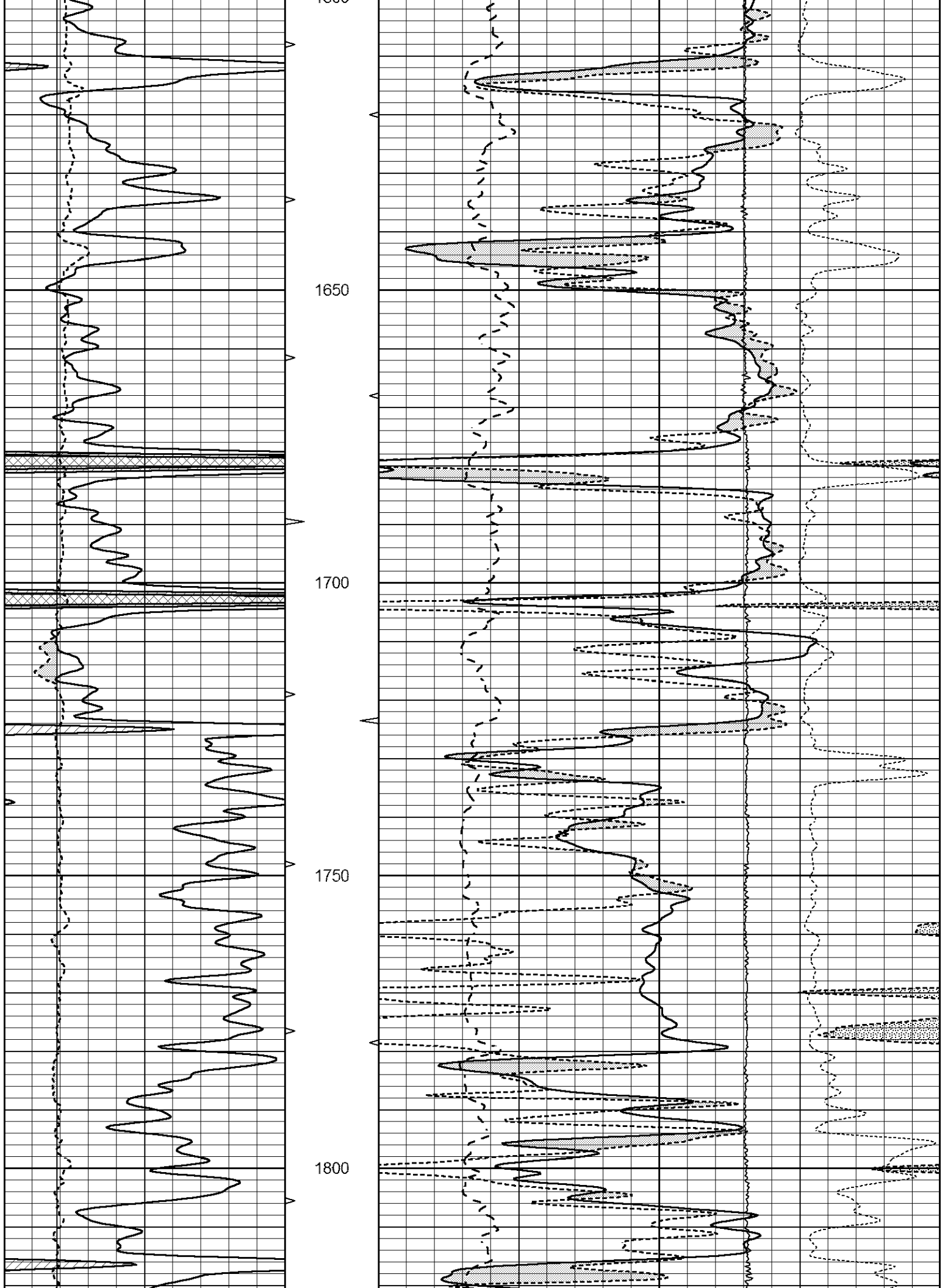


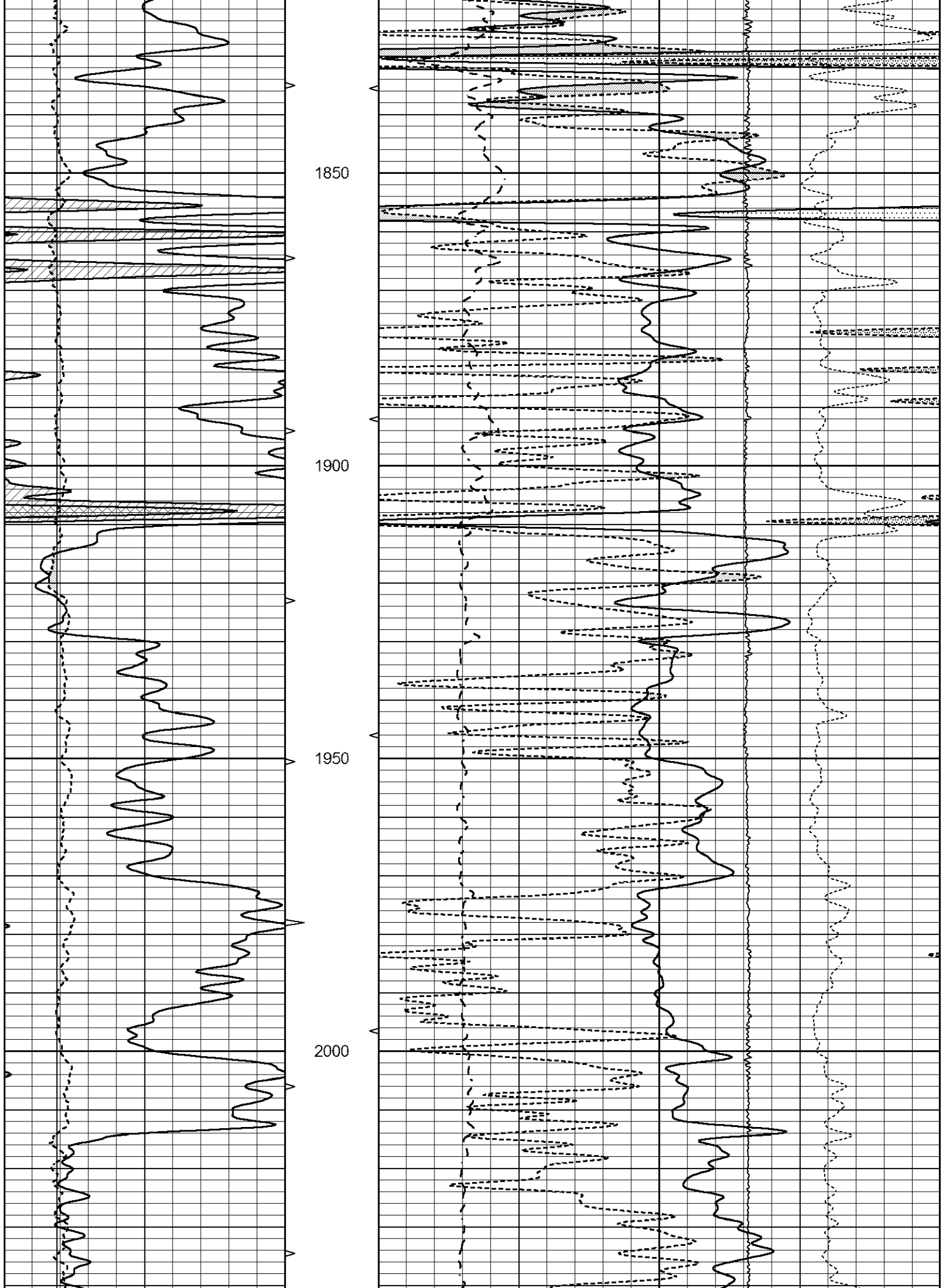


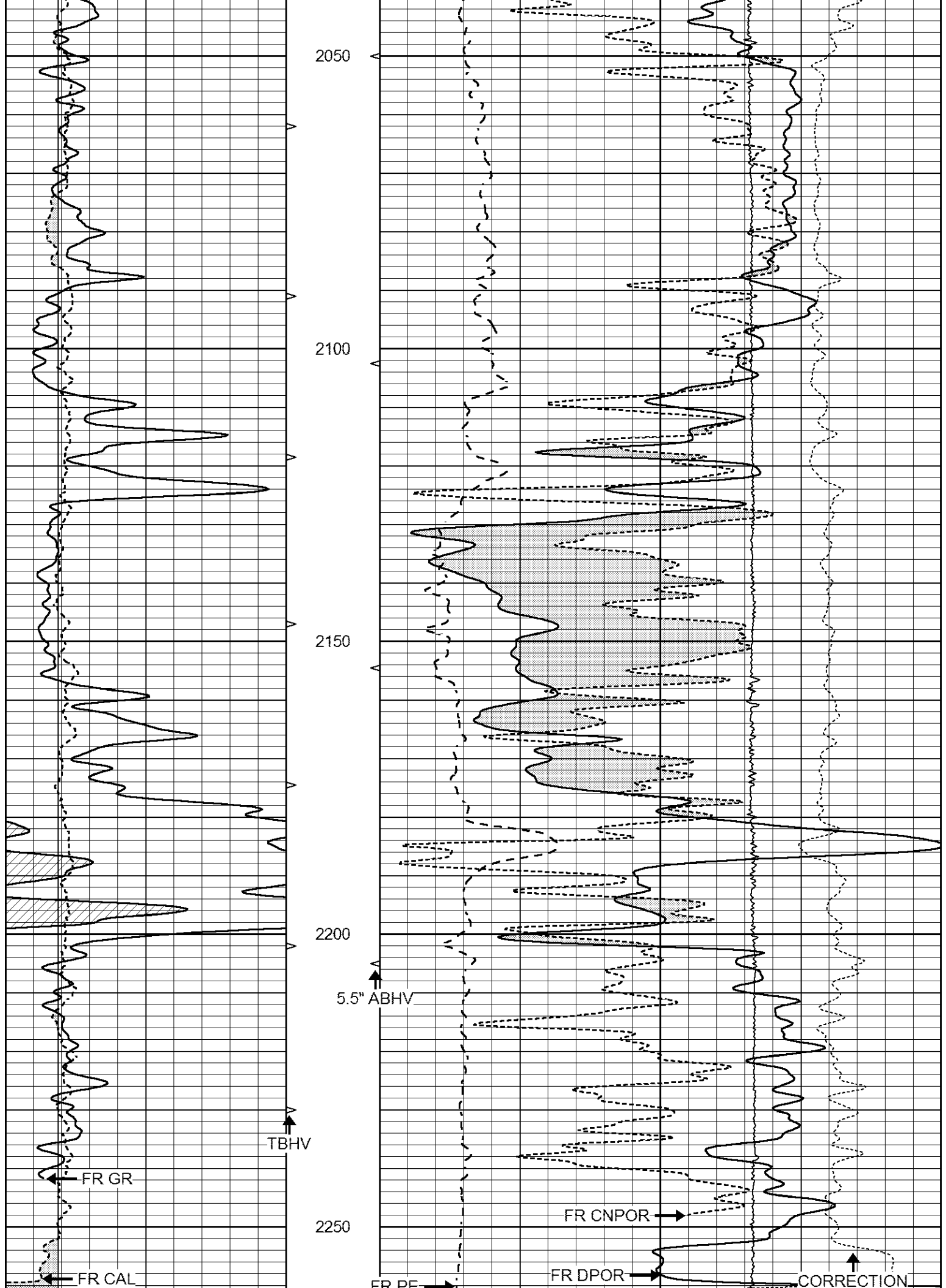




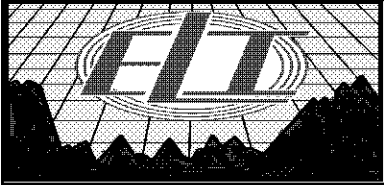








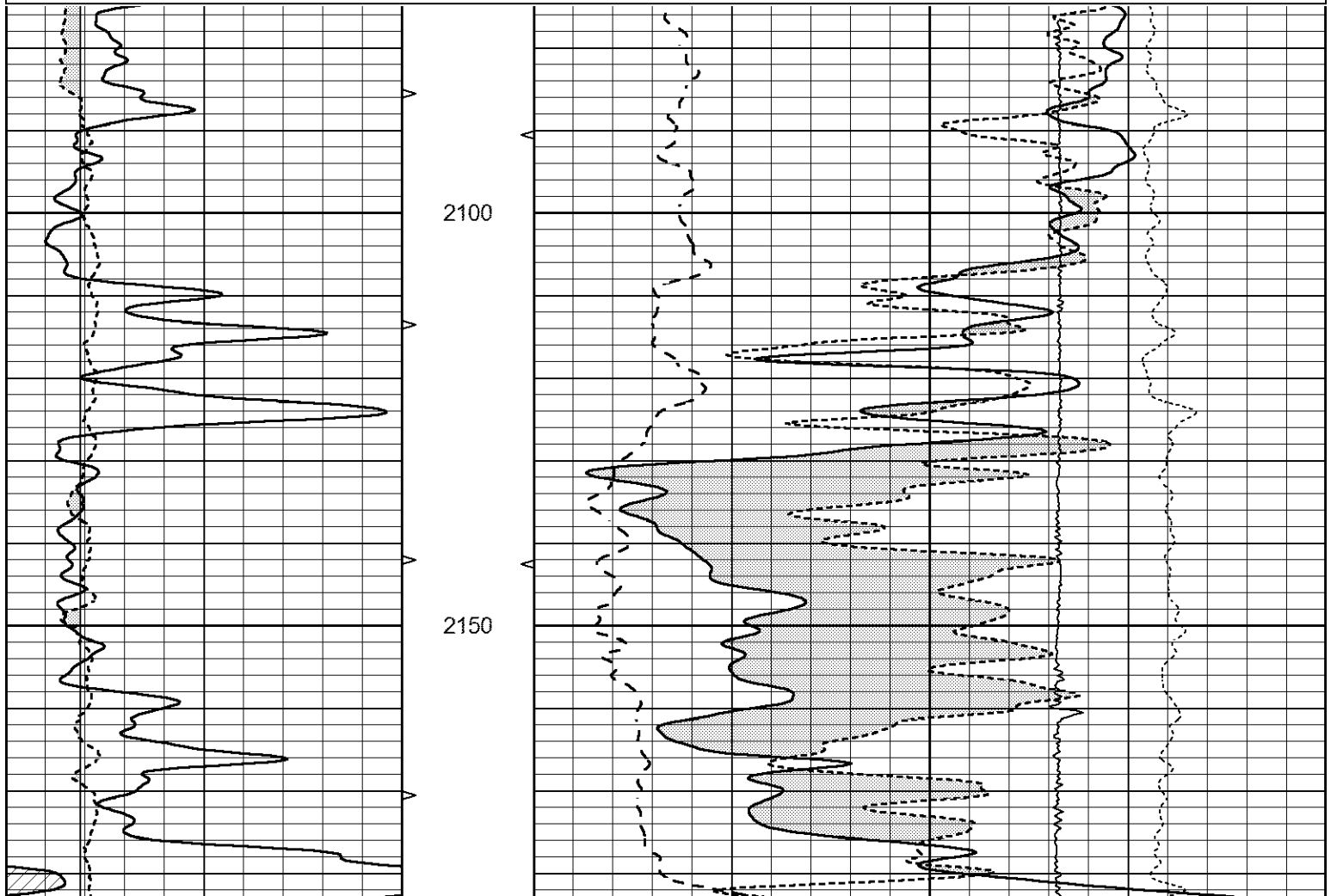
			LTD 2279			2.71 LIMESTONE MATRIX			LTEN →		
0	GAMMA RAY (GAPI)	150	ABHV	30	COMPENSATED DENSITY (pu)			-10			
6	CALIPER (in)	16	10 (ft3)	0	30	COMPENSATED NEUTRON (pu)			-10		
			TBHV	0	PE	10	-0.25	CORRECTION (g/cc)		0.25	
			0 (ft3)	10				0	LTEN (lb)		5000



REPEAT SECTION

Database File 6757pe.db
 Dataset Pathname pass2R2
 Presentation Format _ldt_neu
 Dataset Creation Fri Jul 15 16:24:59 2022
 Charted by Depth in Feet scaled 1:240

0	GAMMA RAY (GAPI)	150	ABHV	30	COMPENSATED DENSITY (pu)			-10			
6	CALIPER (in)	16	10 (ft3)	0	30	COMPENSATED NEUTRON (pu)			-10		
			TBHV	0	PE	10	-0.25	CORRECTION (g/cc)		0.25	
			0 (ft3)	10				0	LTEN (lb)		5000



	Zero	Cal		Zero	Cal		m'	b'
Deep	-0.824	395.917	mmho/m	-0.976	397.550	mmho/m	1.004	-0.149
Medium	3.565	471.327	mmho/m	3.468	471.590	mmho/m	1.001	-0.099
LL3		7.503	V		1500.000	Ohm-m		
		0.001	V		20.000	Ohm-m		
		-7.481	V		3745.000	mmho-m		

After Survey Verification								
	Readings			Targets			Results	
	Zero	Cal		Zero	Cal		m'	b'
Deep	0.000	0.000	mmho/m	-0.824	395.917	mmho/m	1.000	0.000
Medium	0.000	0.000	mmho/m	3.565	471.327	mmho/m	1.000	0.000
LL3		0.000	Ohm-m		1500.000	Ohm-m		
		0.000	Ohm-m		20.000	Ohm-m		
		0.000	mmho-m		3745.000	mmho-m		

Litho Density Calibration Report
Serial: 005 Model: Litho_Ver3

Master Calibration		Performed Fri May 13 13:54:58 2022				
	Background	Magnesium	Aluminum	Aluminum+Fe		
Window 1	1363.1	46477.8	11515.9	9589.9	cps	
Window 2	1239.4	36488.4	9270.1	7998.9	cps	
Window 3	1044.3	20488.1	5500.7	4913.3	cps	
Window 4	315.7	358.7	321.5	319.5	cps	
Long Space	0.0	35249.0	8030.7	6759.4	cps	
Short Space	1.4	9675.7	6523.4	5391.9	cps	
Rho		1.7100	2.5900	0.0000	g/cc	
Pe		2.0000	2.7500	5.7900		
Rib Angle	: 45.1	Rib Slope	: 1.003	Density/Spine Ratio	: 0.575	
Spine Angle	: 75.1	Spine Slope	: 3.752	Spine Intercept	: -24.0	

Before Survey Verification		Performed Wed Dec 31 18:00:00 1969				
Window 1	0.0	0.0	0.0	0.0	cps	
Window 2	0.0	0.0	0.0	0.0	cps	
Window 3	0.0	0.0	0.0	0.0	cps	
Window 4	0.0	0.0	0.0	0.0	cps	
Long Space	0.0	0.0	0.0	0.0	cps	
Short Space	0.0	0.0	0.0	0.0	cps	
Measured Rho		0.0000	0.0000	0.0000	g/cc	
Measured Correction		0.0000	0.0000	0.0000	g/cc	
Measured Pe			0.0000	0.0000		

After Survey Verification		Performed Wed Dec 31 18:00:00 1969				
Window 1	0.0	0.0	0.0	0.0	cps	
Window 2	0.0	0.0	0.0	0.0	cps	
Window 3	0.0	0.0	0.0	0.0	cps	
Window 4	0.0	0.0	0.0	0.0	cps	
Long Space	0.0	0.0	0.0	0.0	cps	
Short Space	0.0	0.0	0.0	0.0	cps	
Measured Rho		0.0000	0.0000	0.0000	g/cc	
Measured Correction		0.0000	0.0000	0.0000	g/cc	
Measured Pe			0.0000	0.0000		

Compensated Neutron Calibration Report

Serial Number: 080621PMC
Tool Model: NABORS

PRE-SURVEY VERIFICATION

Detector	Readings	Measured	Target
Short Space	cps		
Long Space	cps	pu	pu

POST-SURVEY VERIFICATION

Detector	Readings	Measured	Target
Short Space	cps		
Long Space	cps	pu	pu

Gamma Ray Calibration Report

Serial Number:	7	
Tool Model:	Probe1	
Performed:	Thu May 26 08:56:46 2022	
Calibrator Value:	1.0	GAPI
Background Reading:	0.0	cps
Calibrator Reading:	1.0	cps
Sensitivity:	0.5500	GAPI/cps