

DUAL INDUCTION LOG

Company: BLUERIDGE PETROLEUM CORPORATION
 Well: STICE #2-2
 Field: ALTA VISTA
 County: WABAUNSEE State: KANSAS

Location: API #: 15-197-20319-0000
 330' FSL & 641' FWL
 E2 - SW - SW - SW
 SEC 2 TWP 14S RGE 8E
 Permanent Datum: GROUND LEVEL Elevation: 1496
 Log Measured From: KELLY BUSHING 8' A.G.L.
 Drilling Measured From: KELLY BUSHING
 Other Services: CDL/CNL/PE MEL/SON
 Elevation: K.B. 1504, D.F. 1502, G.L. 1496

Date	7/15/22
Run Number	ONE
Depth Driller	2280
Depth Logger	2279
Bottom Logged Interval	2277
Top Log Interval	00
Casing Driller	8 5/8" @ 327
Casing Logger	340
Bit Size	7 7/8
Type Fluid in Hole	CHEMICAL MUD
Density / Viscosity	9.2/48
PH / Fluid Loss	9.5/10.0
Source of Sample	FLOWLINE
Rm @ Meas. Temp	1.50 @ 85F
Rmt @ Meas. Temp	1.13 @ 85F
Rmc @ Meas. Temp	1.80 @ 85F
Source of Rmf / Rmc	MEASUREMENT
Rm @ BHT	1.26 @ 101F
Time Circulation Stopped	2 HOURS
Time Logger on Bottom	1:30 P.M.
Maximum Recorded Temperature	101F
Equipment Number	3802
Location	HAYS, KANSAS
Recorded By	COLE ROBBEN
Witnessed By	JIM MUSGROVE

<<< Fold Here >>>

All interpretations are opinions based on inferences from electrical or other measurements and we cannot and do not guarantee the accuracy or correctness of any interpretation, and we shall not, except in the case of gross or willful negligence on our part, be liable or responsible for any loss, costs, damages, or expenses incurred or sustained by anyone resulting from any interpretation made by any of our officers, agents or employees. These interpretations are also subject to our general terms and conditions set out in our current Price Schedule.

Comments

THANK YOU FOR USING ELI WIRELINE SERVICES, HAYS, KS. (785) 628-6395
 DIRECTIONS:
 I-70 EXIT #313 (MANHATTAN/COUNCIL GROVE) 15 MILES SOUTH TO HIGHWAY 4 (ALTA VISTA),
 EAST 1/8TH MILE, NORTH INTO

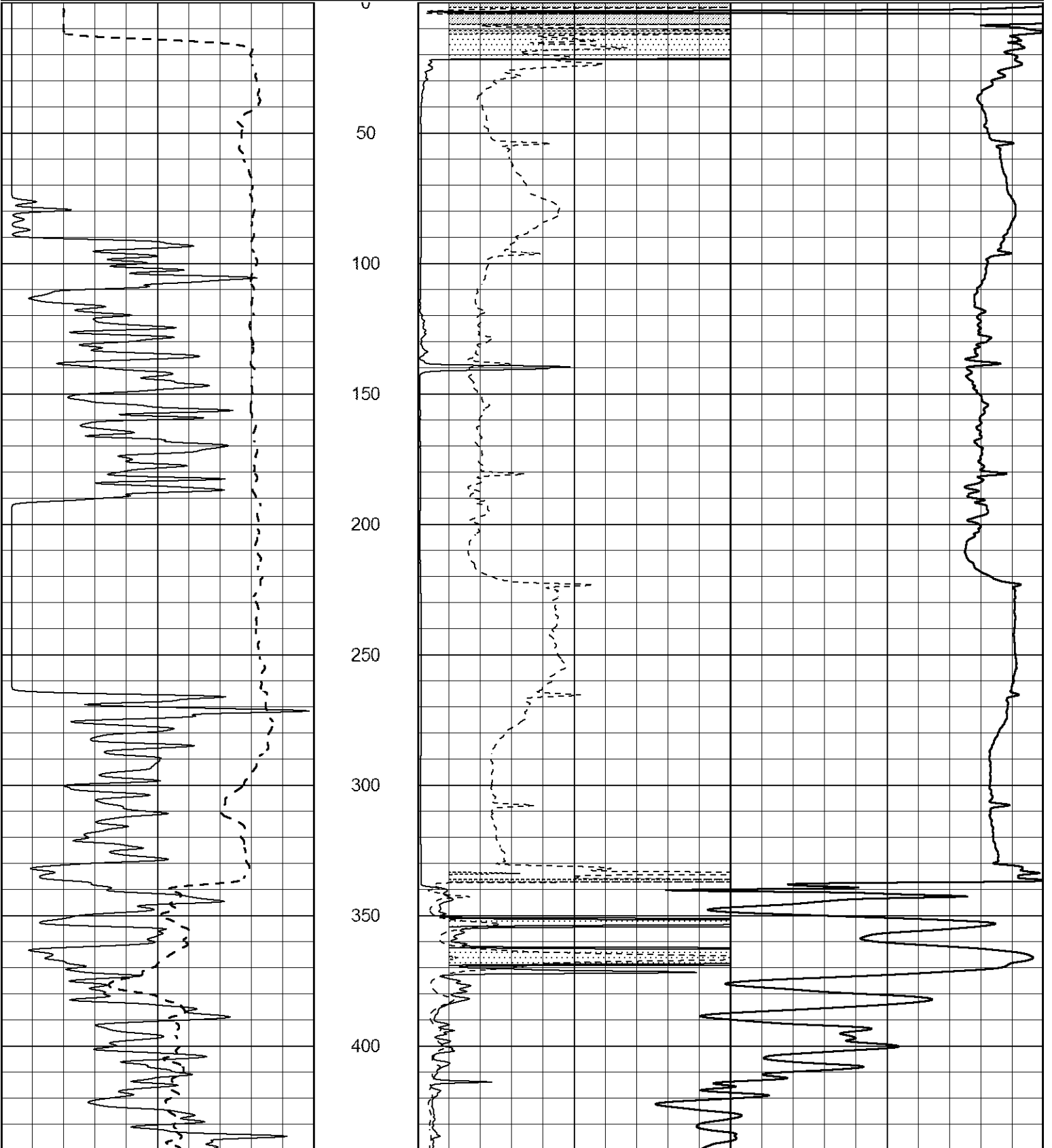


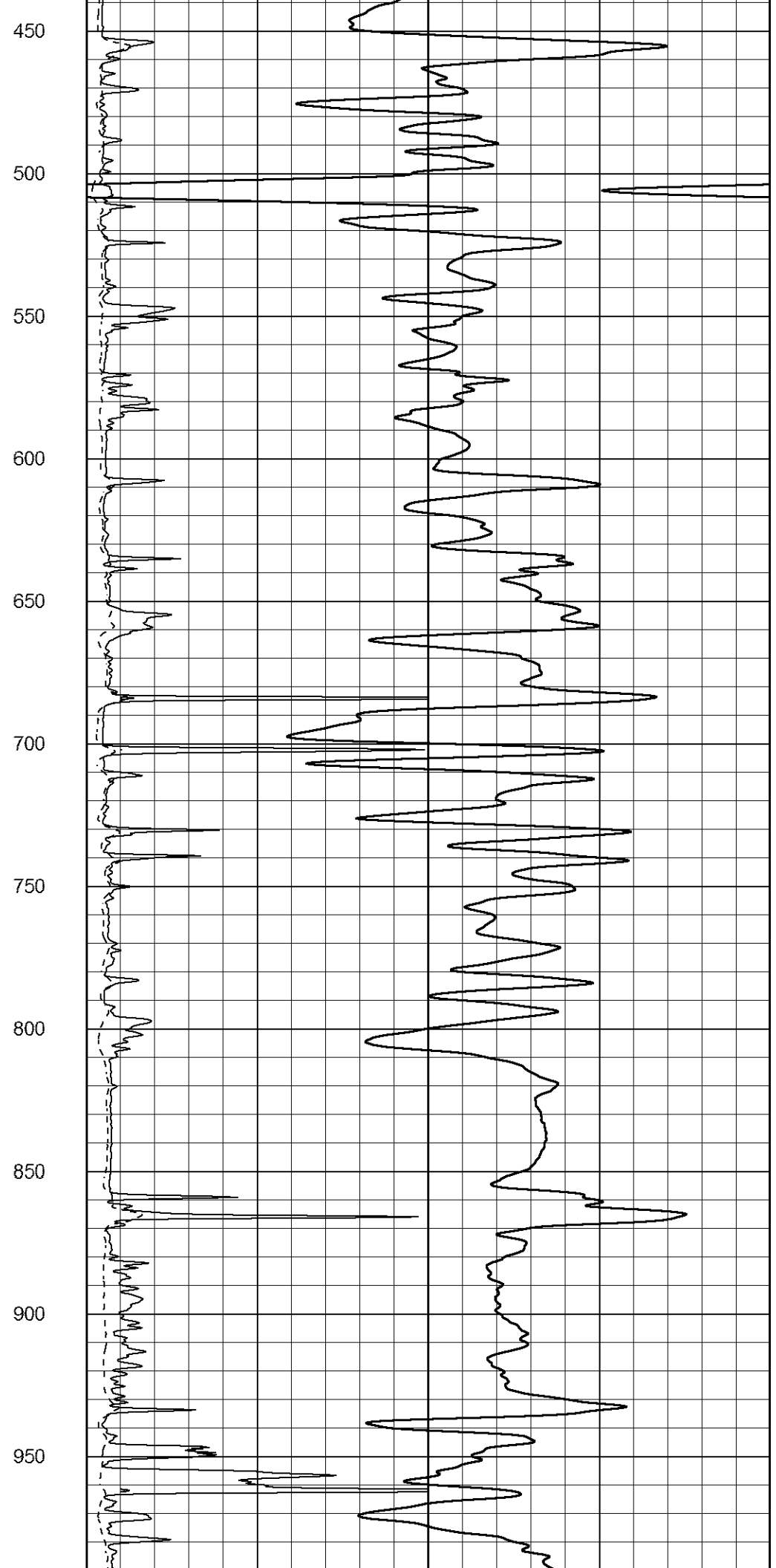
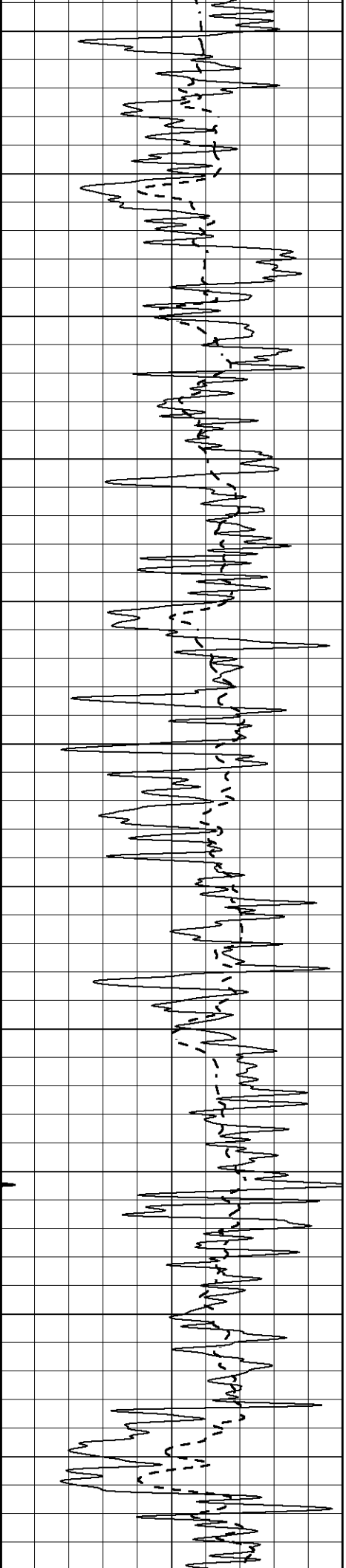
MAIN SECTION

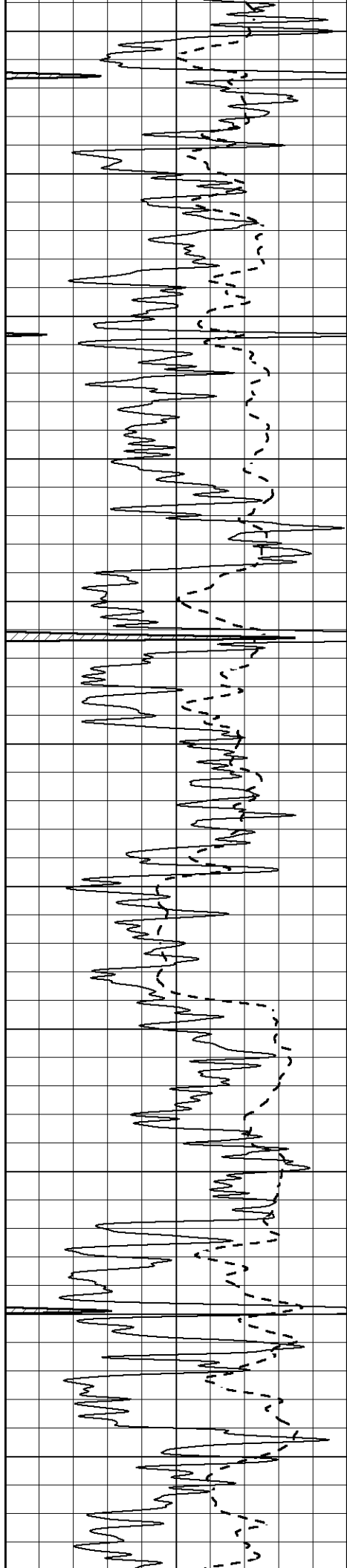
Database File 6757pe.db
 Dataset Pathname pass3M
 Presentation Format _dil2
 Dataset Creation Fri Jul 15 15:41:30 2022
 Charted by Depth in Feet scaled 1:600

0 Gamma Ray (GAPI) 150
 -100 SP (mV) 100

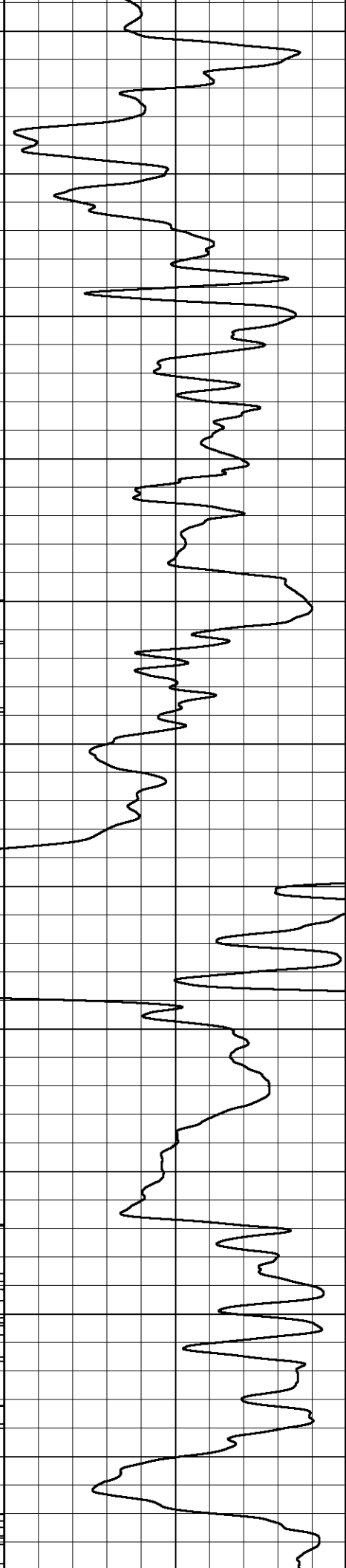
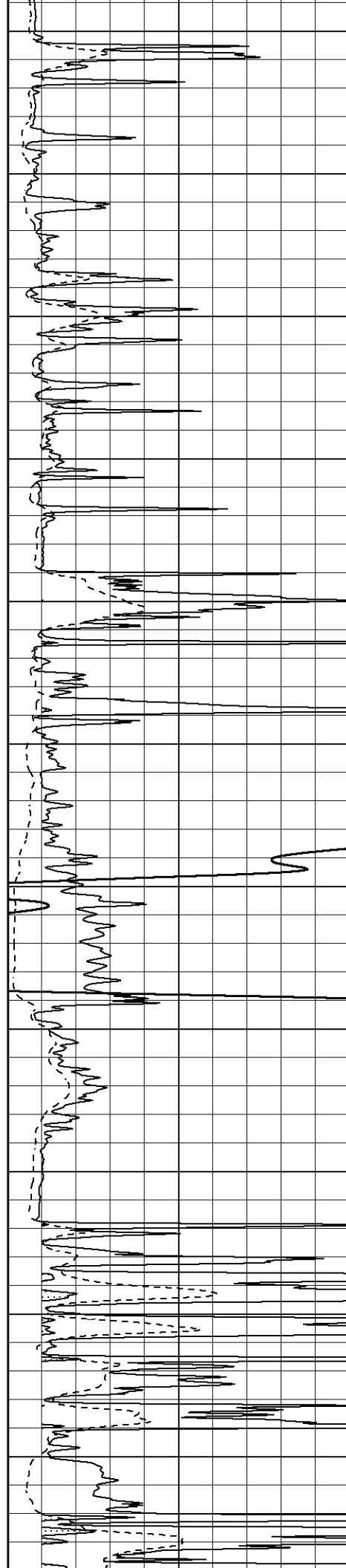
1000 CILD (mmho/m) 0
 0 RLL3 (Ohm-m) 50
 0 Deep Induction (Ohm-m) 50
 50 RILD X10 (Ohm-m) 500
 50 RLL3 X10 (Ohm-m) 500

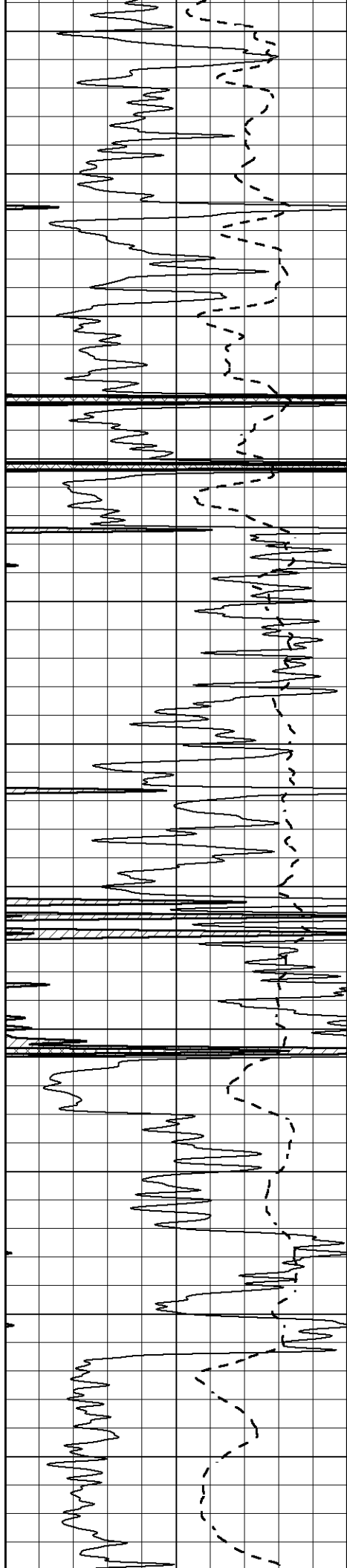






1000
1050
1100
1150
1200
1250
1300
1350
1400
1450
1500





1550

1600

1650

1700

1750

1800

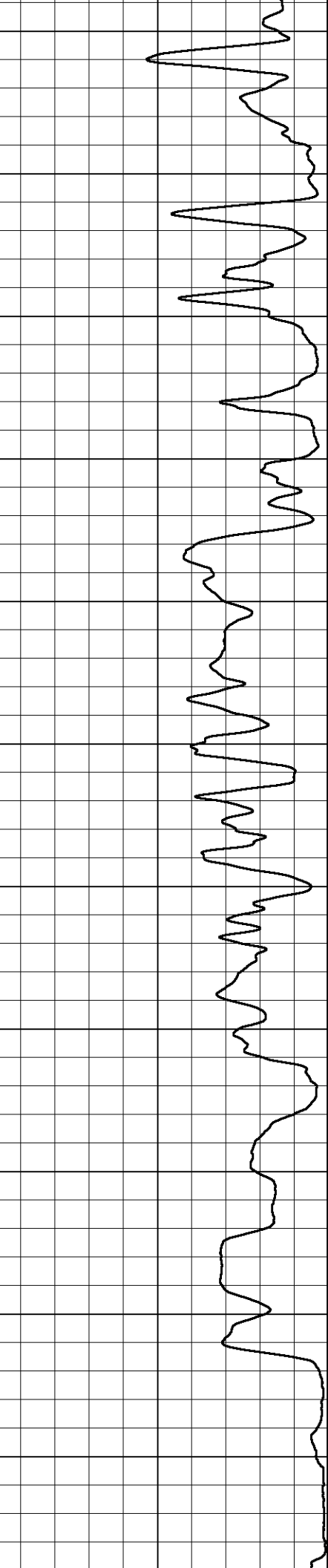
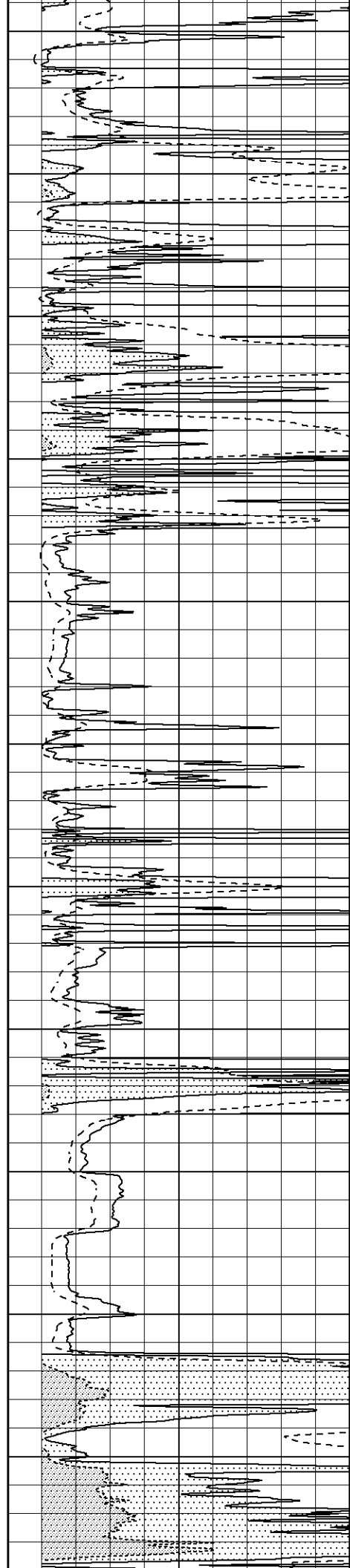
1850

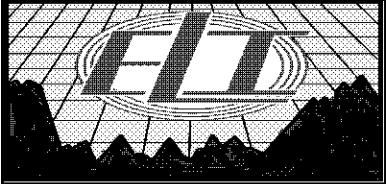
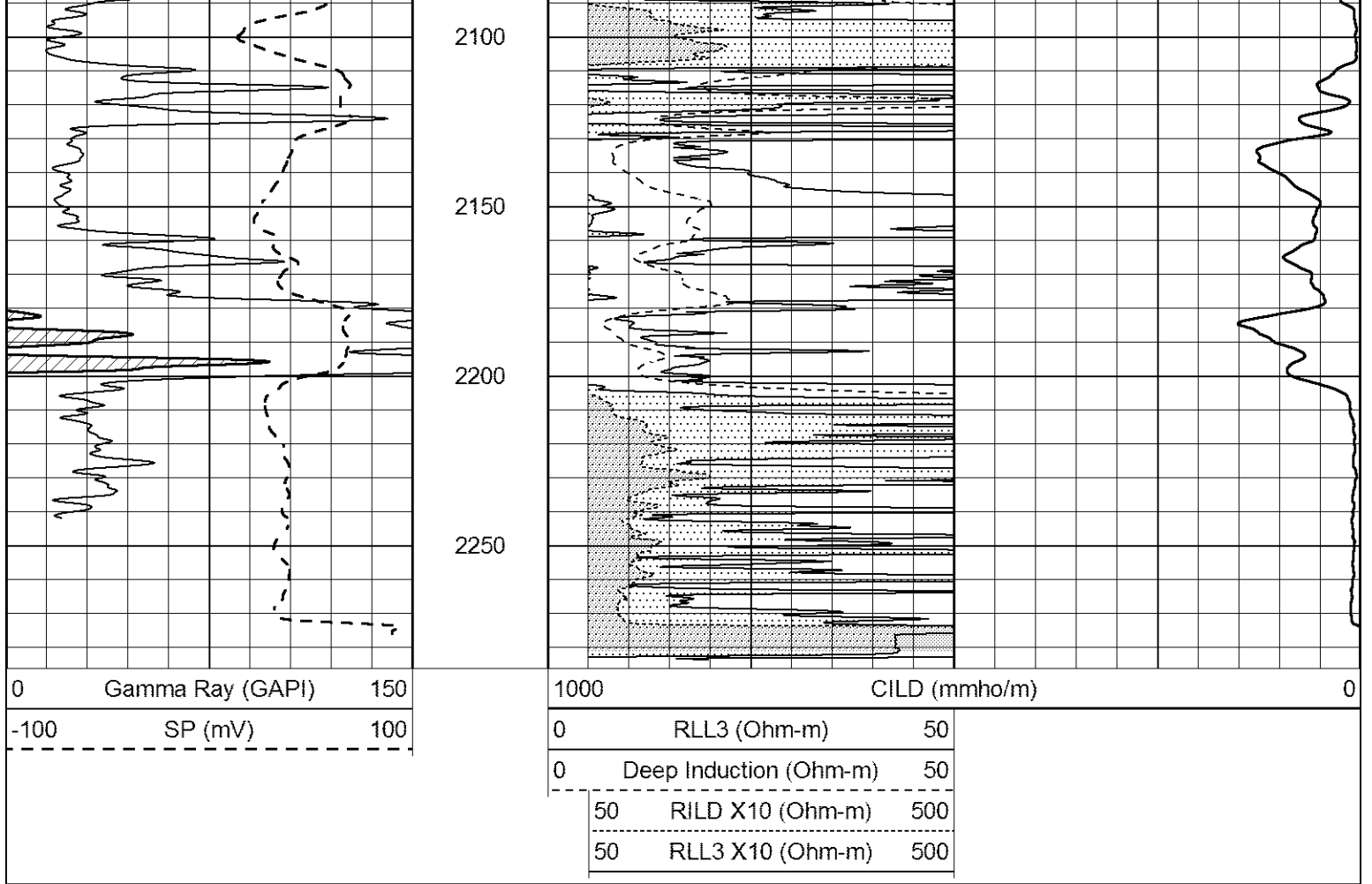
1900

1950

2000

2050

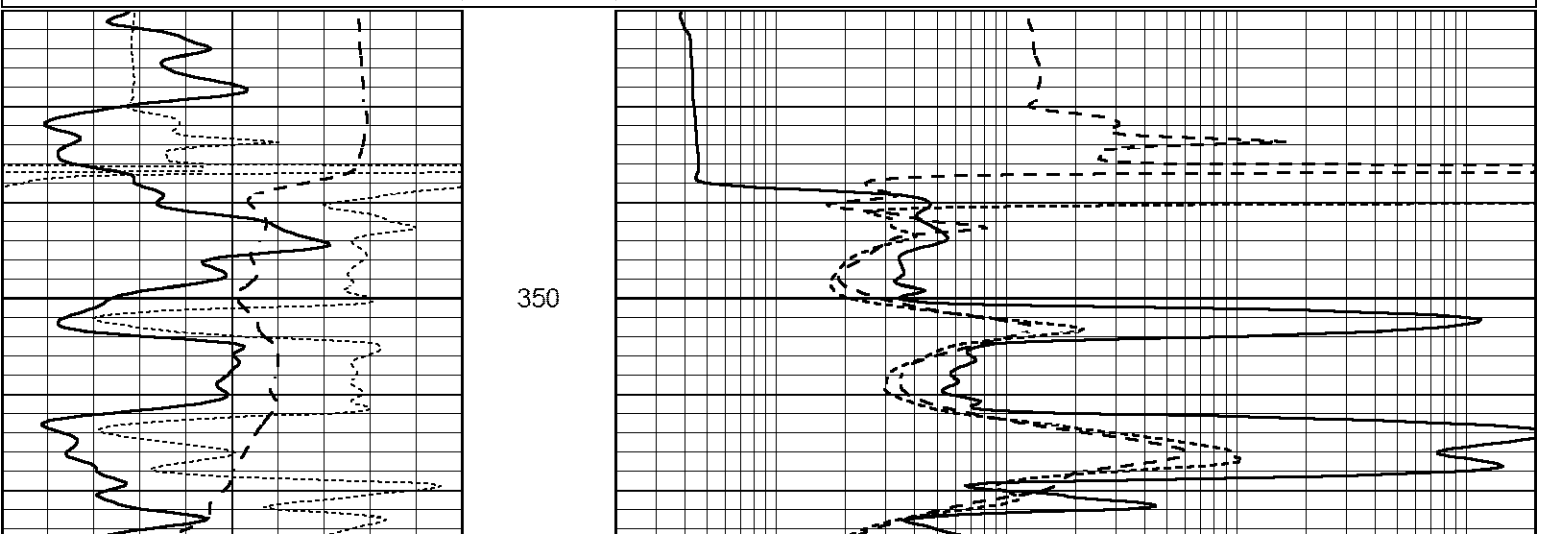


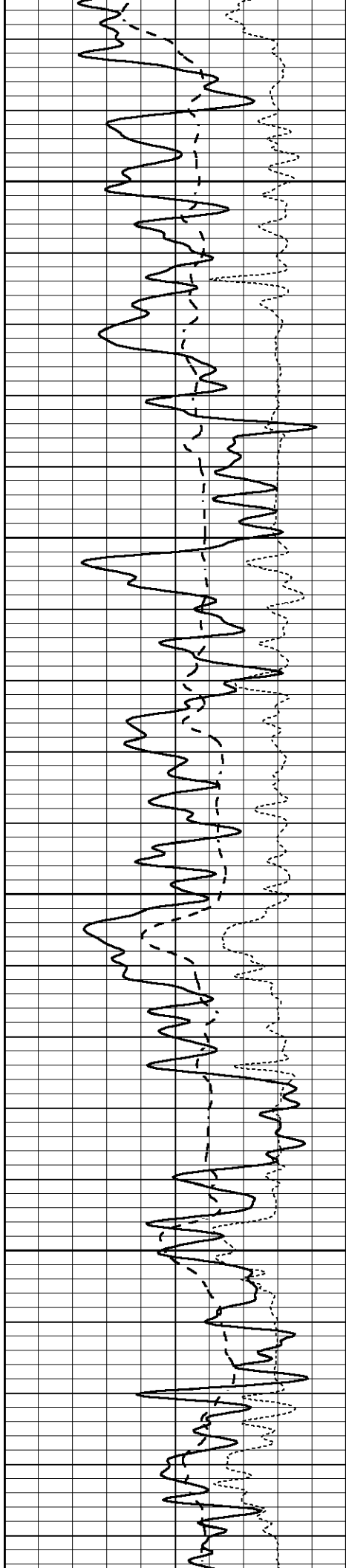


MAIN SECTION

Database File 6757pe.db
 Dataset Pathname pass3M
 Presentation Format _dil
 Dataset Creation Fri Jul 15 15:41:30 2022
 Charted by Depth in Feet scaled 1:240

0	GAMMA RAY (GAPI)	150	0.2	SHALLOW GUARD (Ohm-m)	2000
-100	SP (mV)	100	0.2	MEDIUM INDUCTION (Ohm-m)	2000
-250	Rxo/Rt	50	0.2	DEEP INDUCTION (Ohm-m)	2000



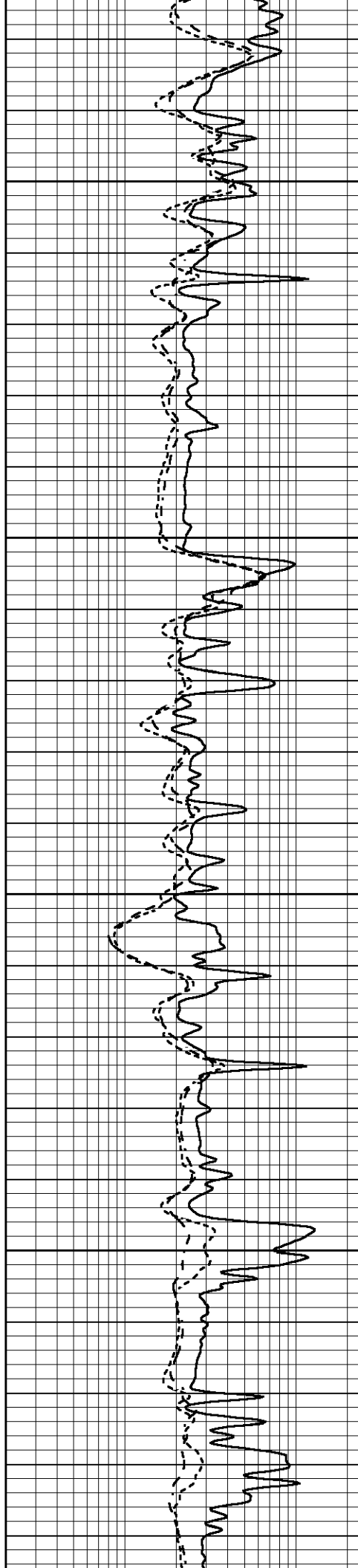


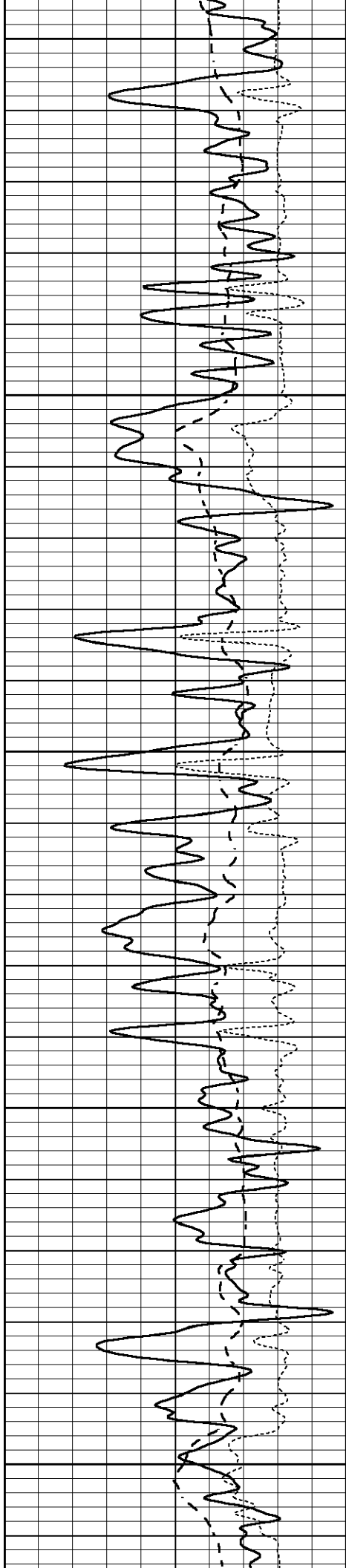
400

450

500

550





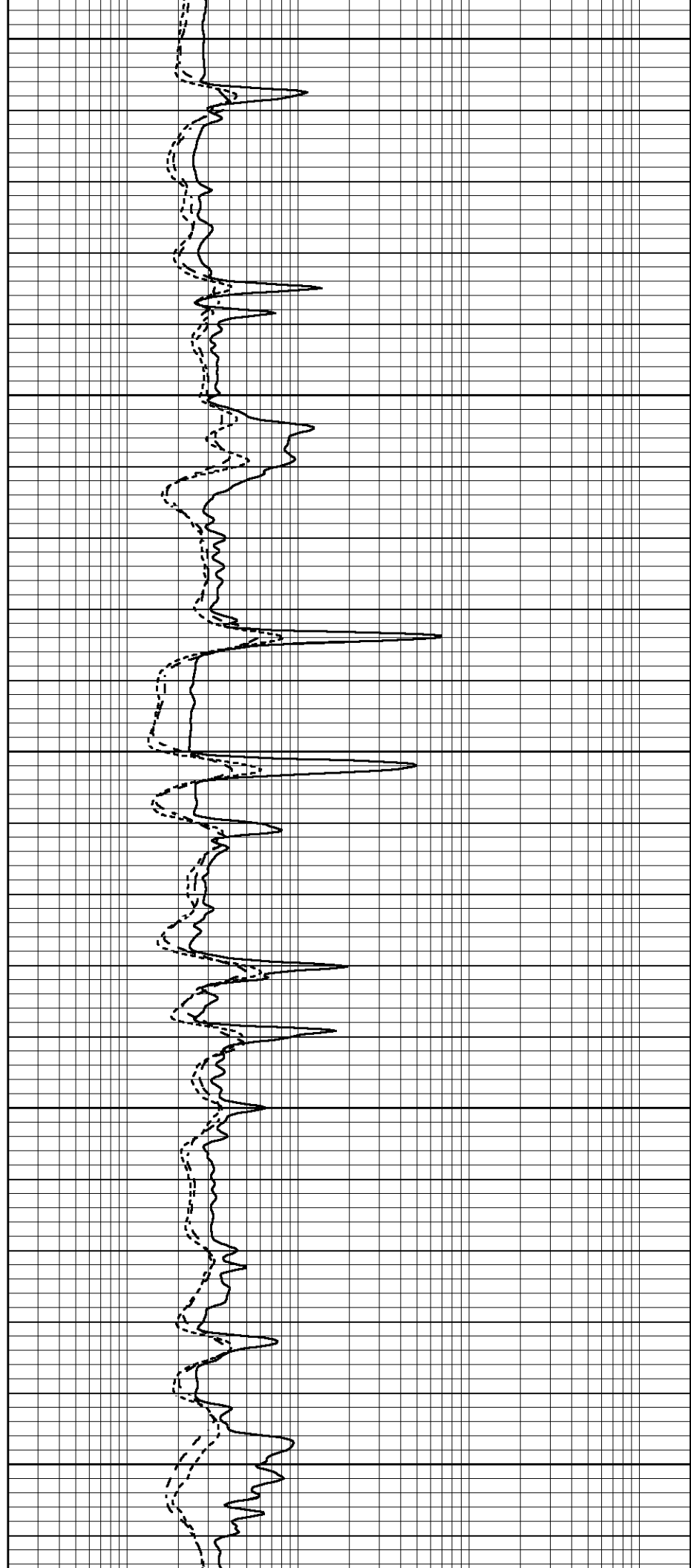
600

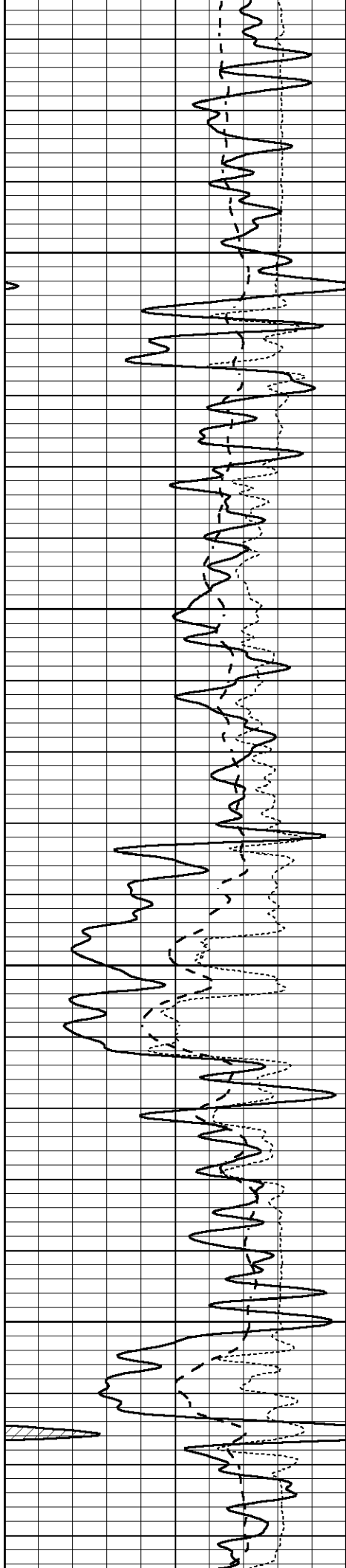
650

700

750

800



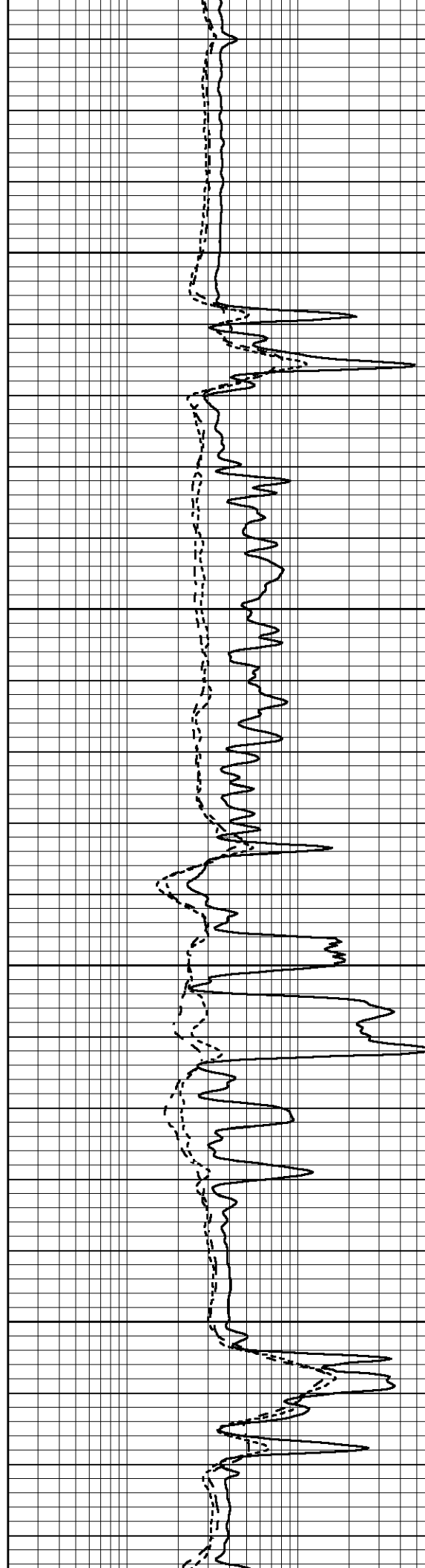


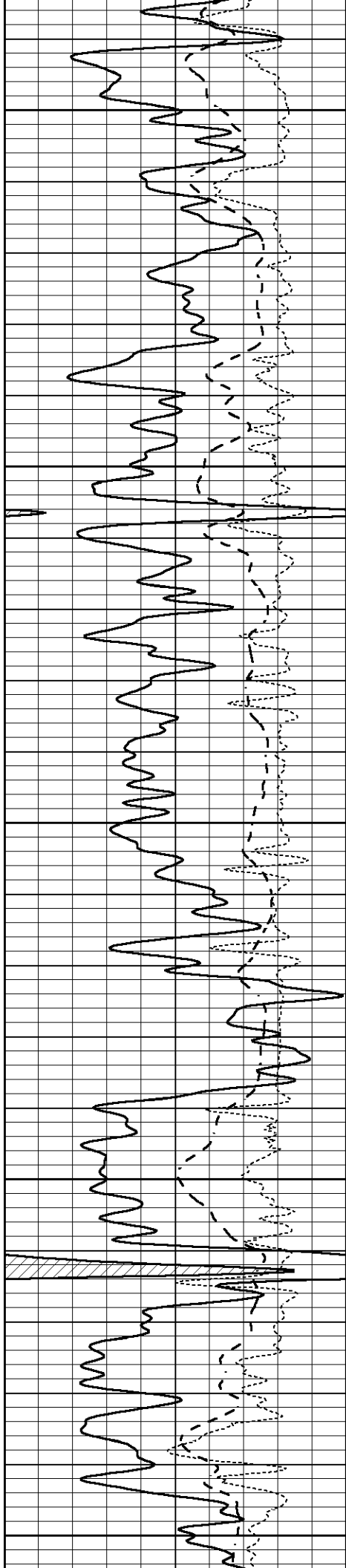
850

900

950

1000





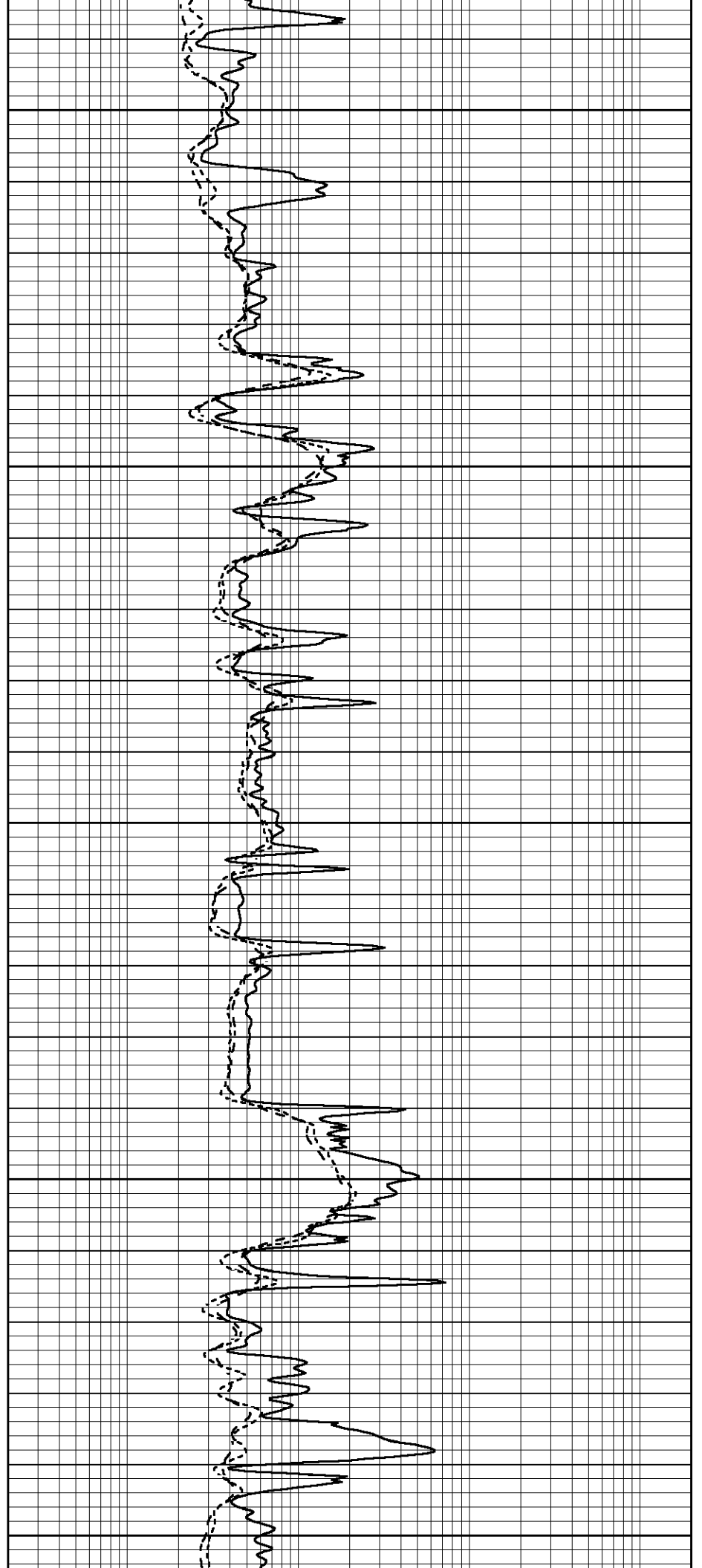
1050

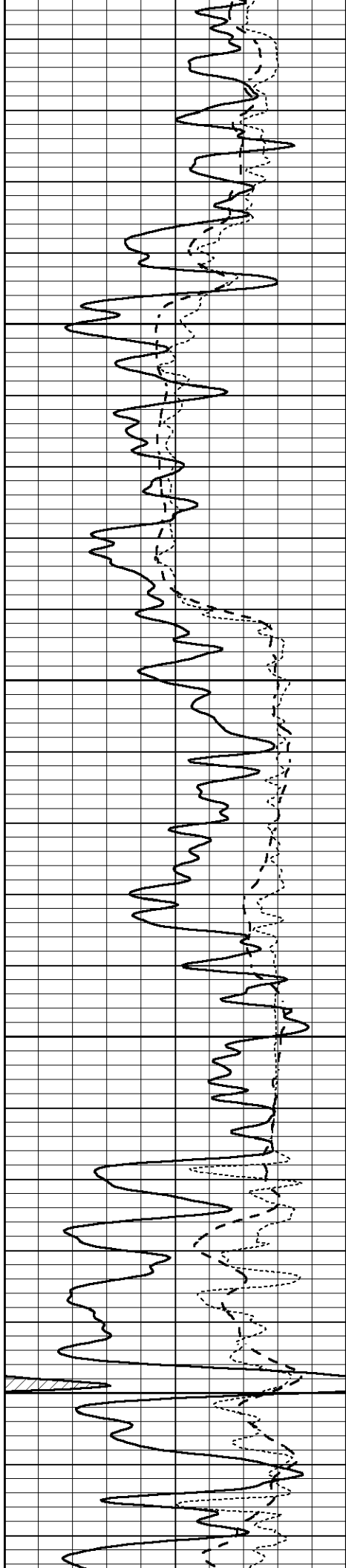
1100

1150

1200

1250



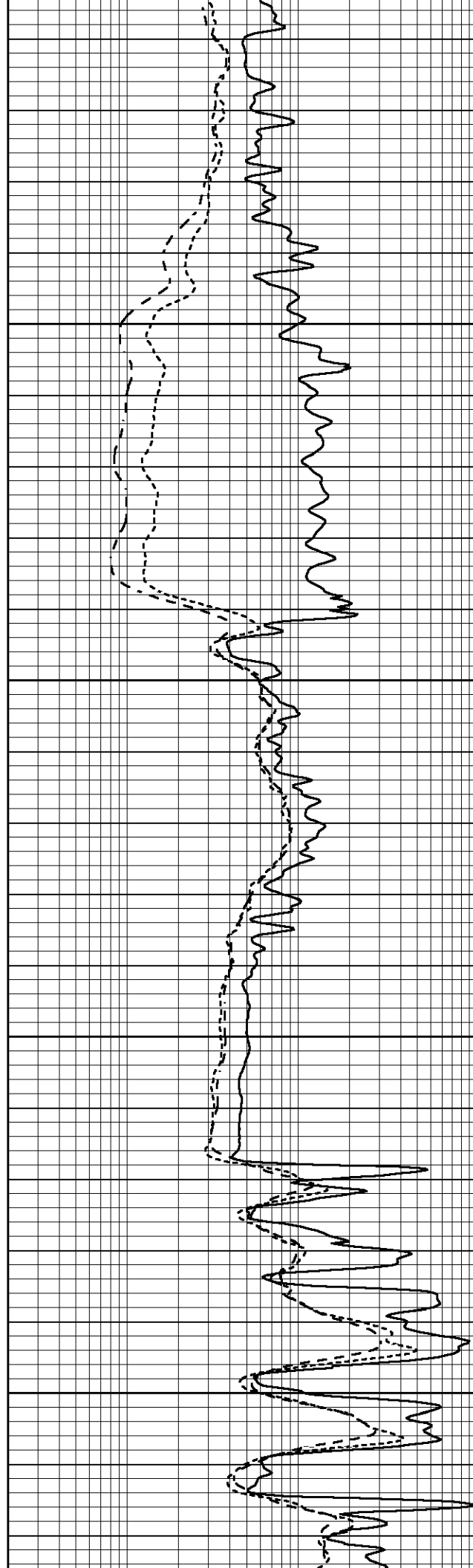


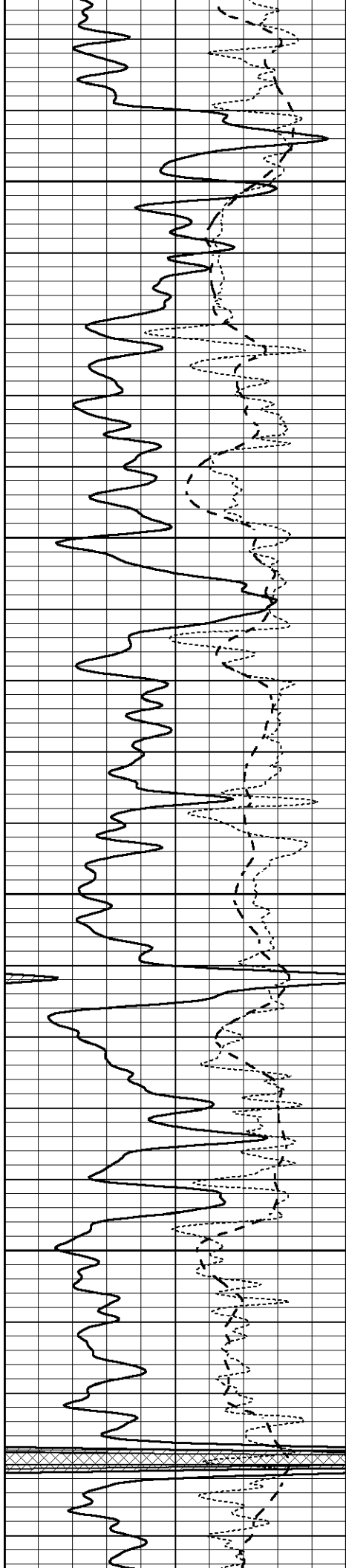
1300

1350

1400

1450



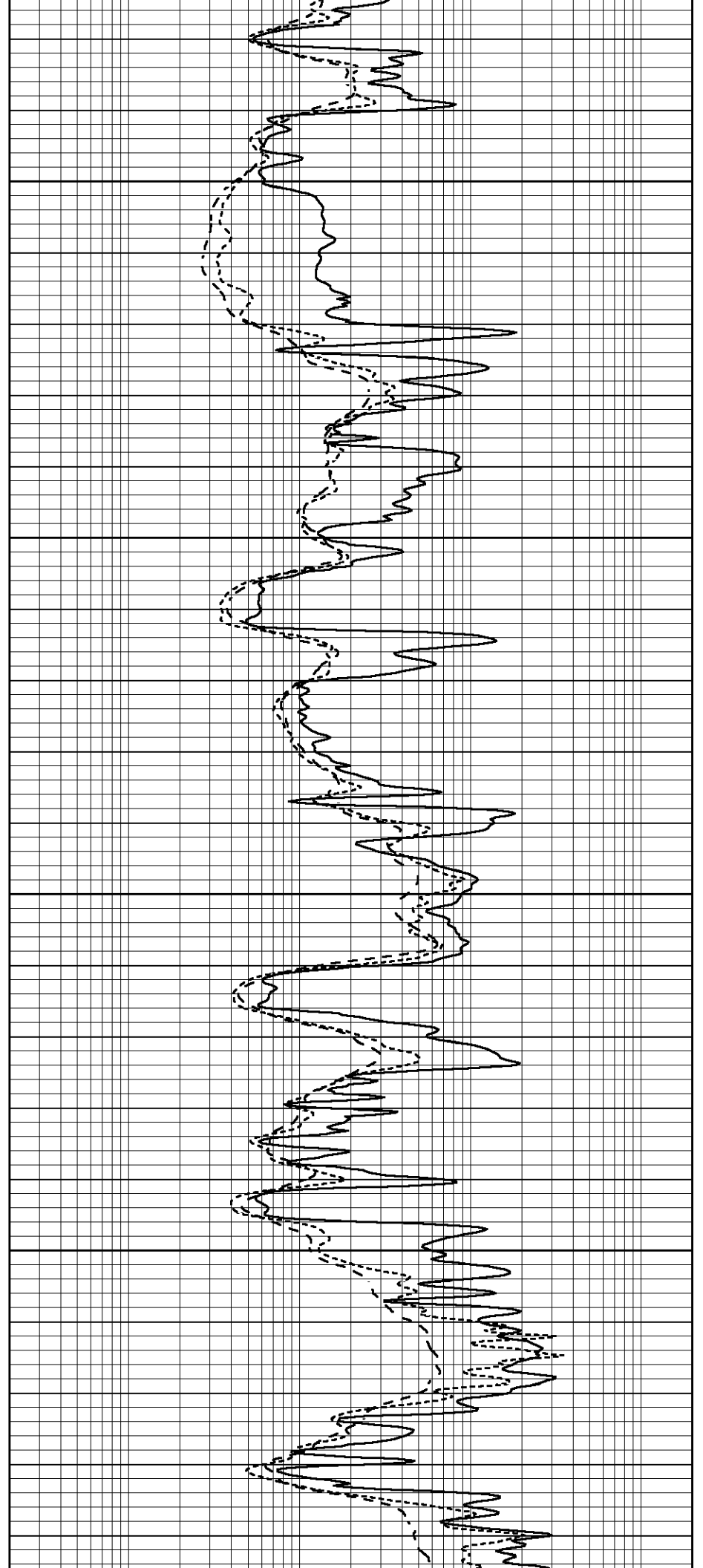


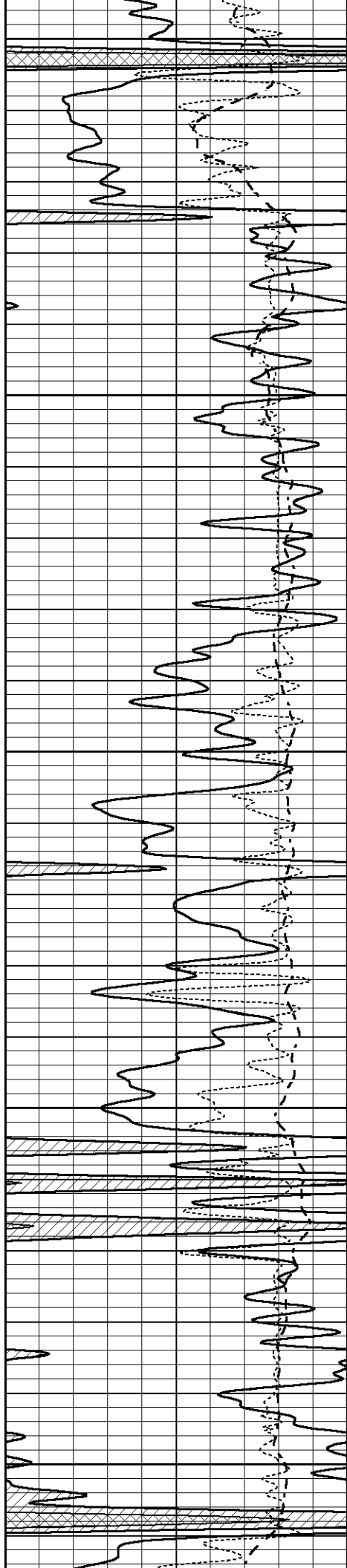
1500

1550

1600

1650





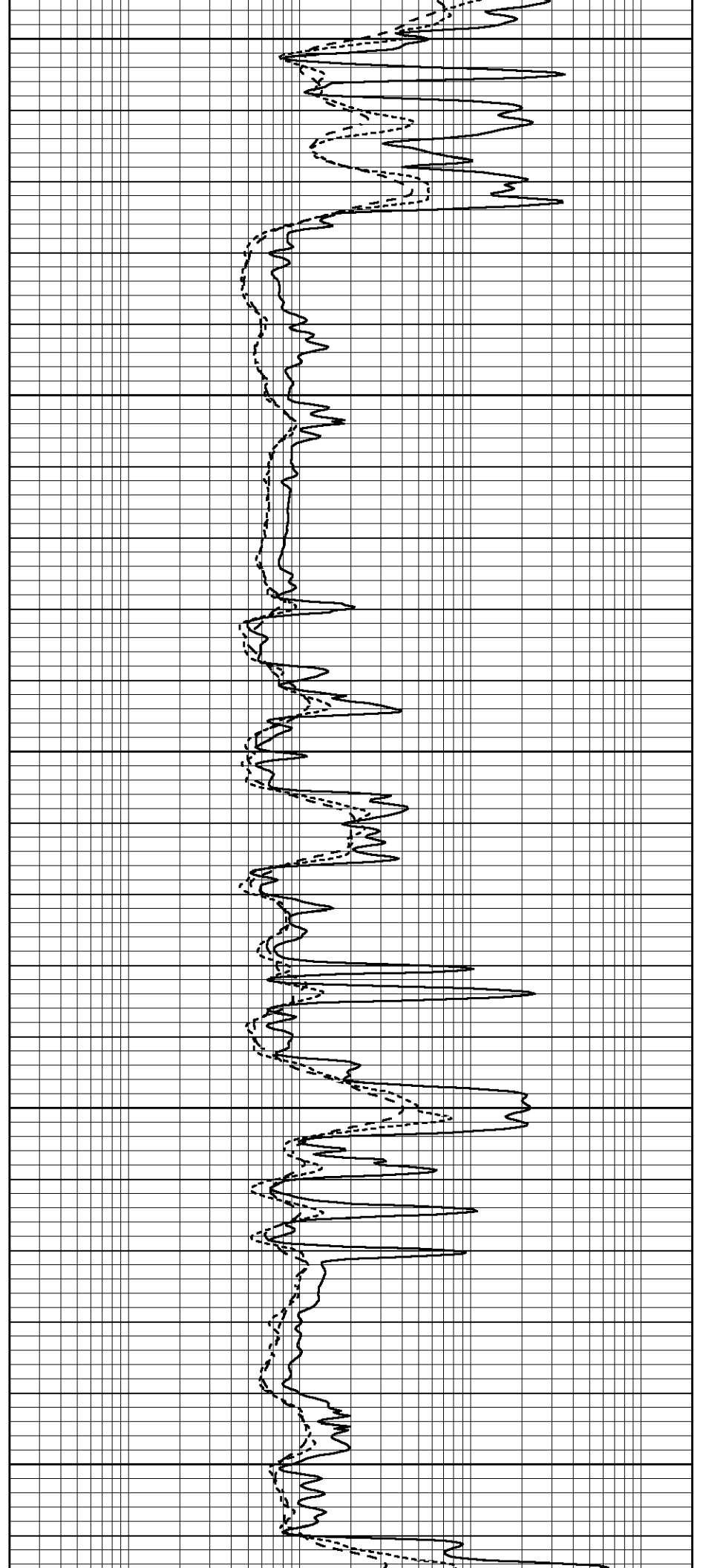
1700

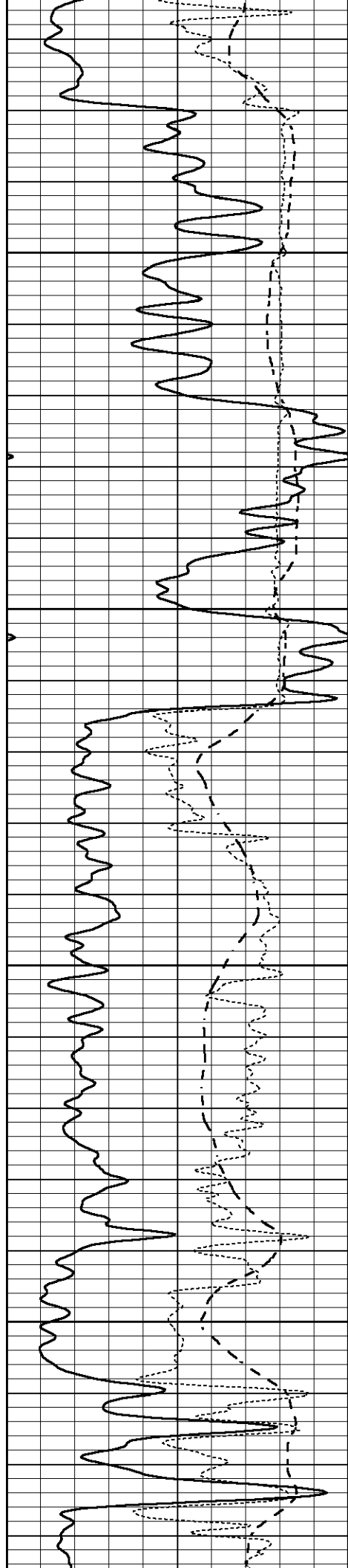
1750

1800

1850

1900



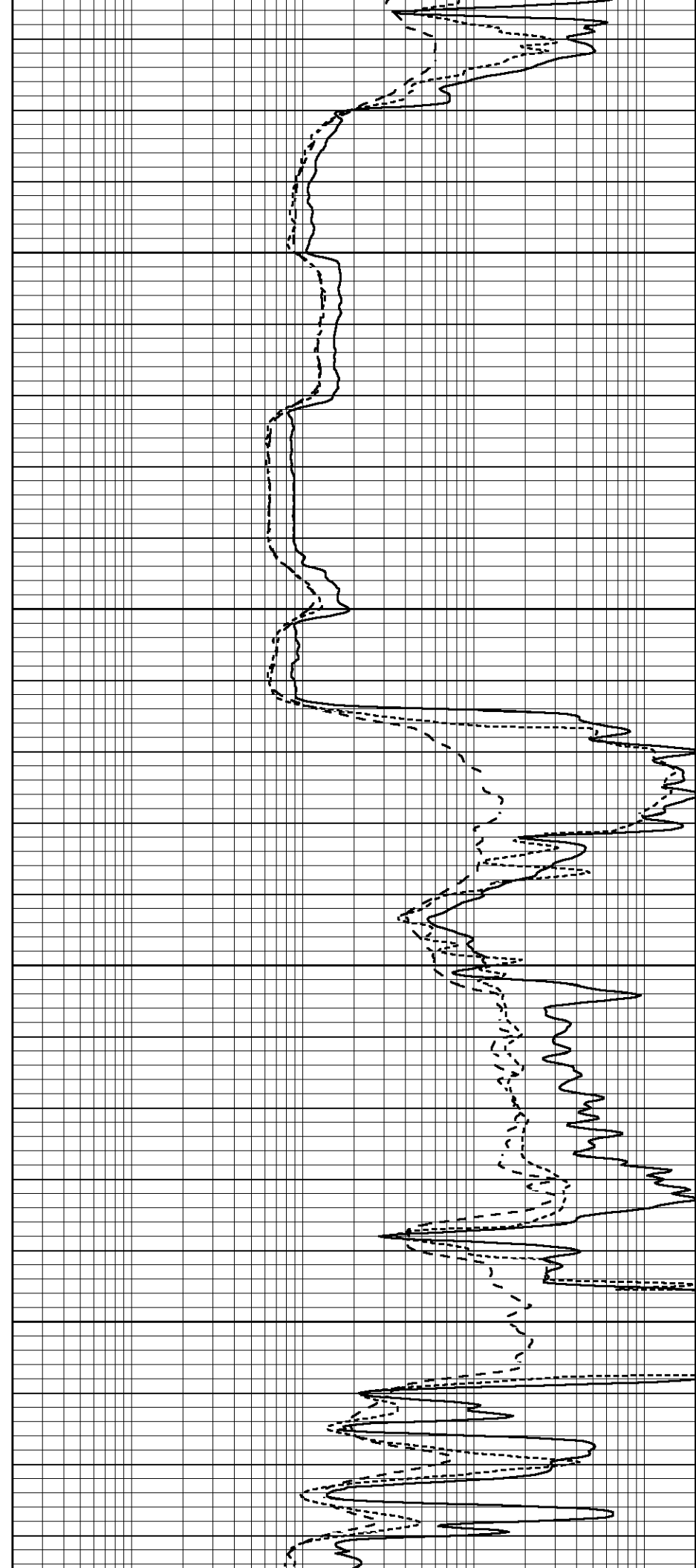


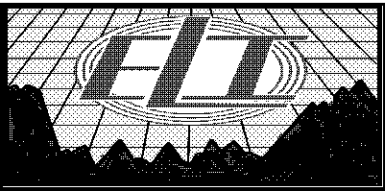
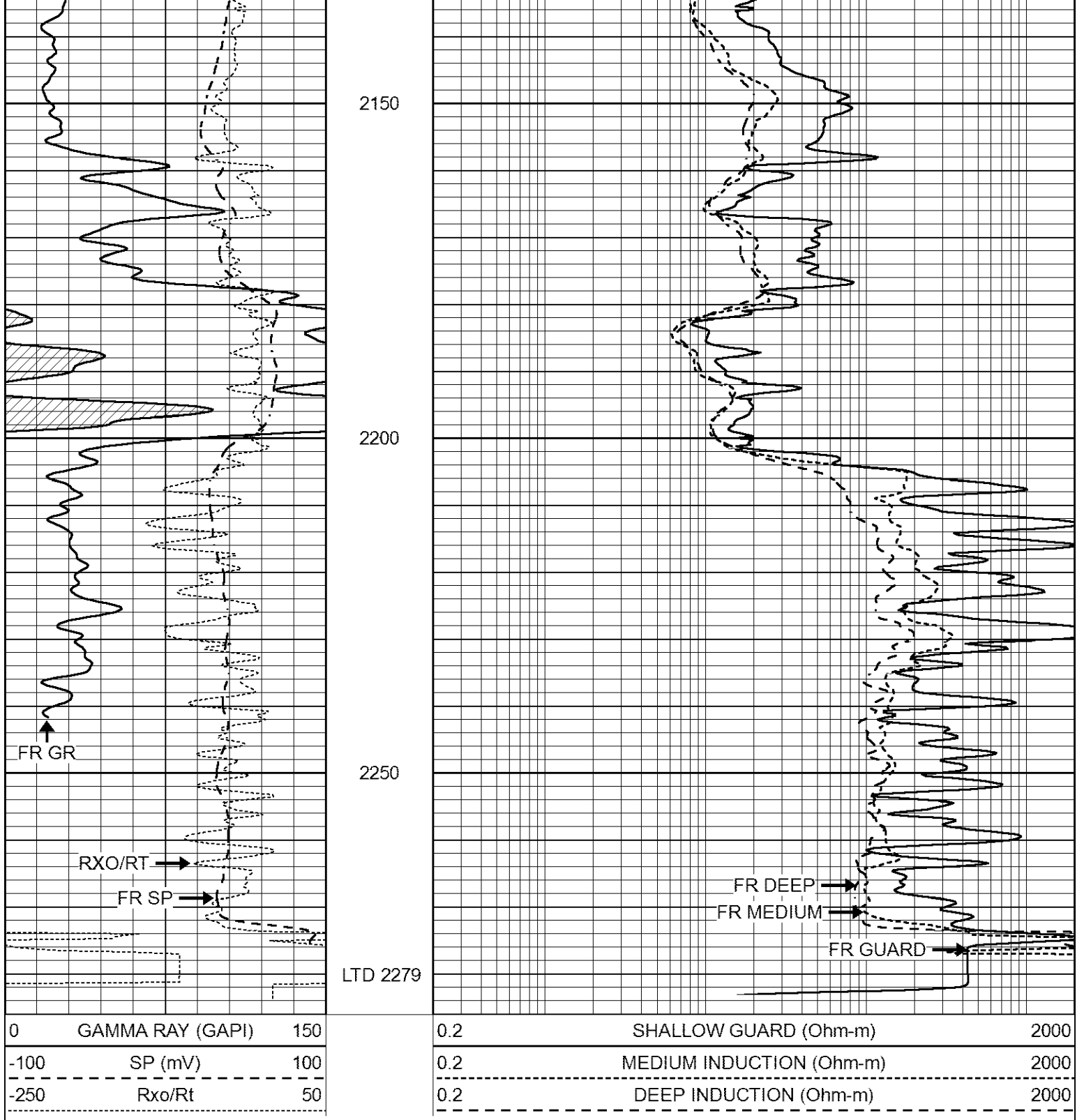
1950

2000

2050

2100





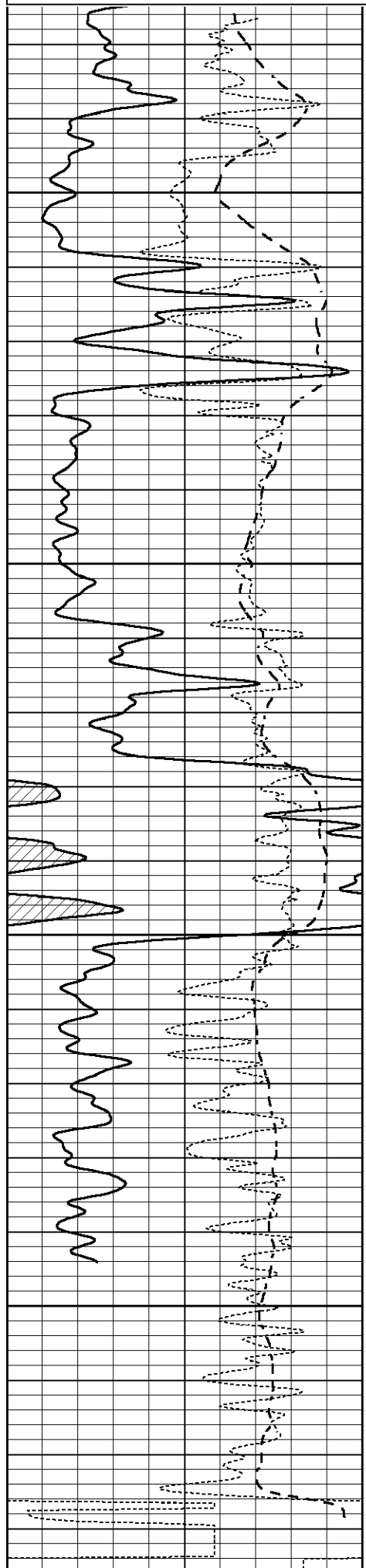
REPEAT SECTION

Database File 6757pe.db
 Dataset Pathname pass2R2
 Presentation Format _dil
 Dataset Creation Fri Jul 15 16:24:59 2022
 Charted by Depth in Feet scaled 1:240

0	GAMMA RAY (GAPI)	150	0.2	SHALLOW GUARD (Ohm-m)	2000
-100	SP (mV)	100	0.2	MEDIUM INDUCTION (Ohm-m)	2000

100
-250 Rxo/Rt 50

0.2 MEDICUM INDUCTION (Ohm-m) 2000

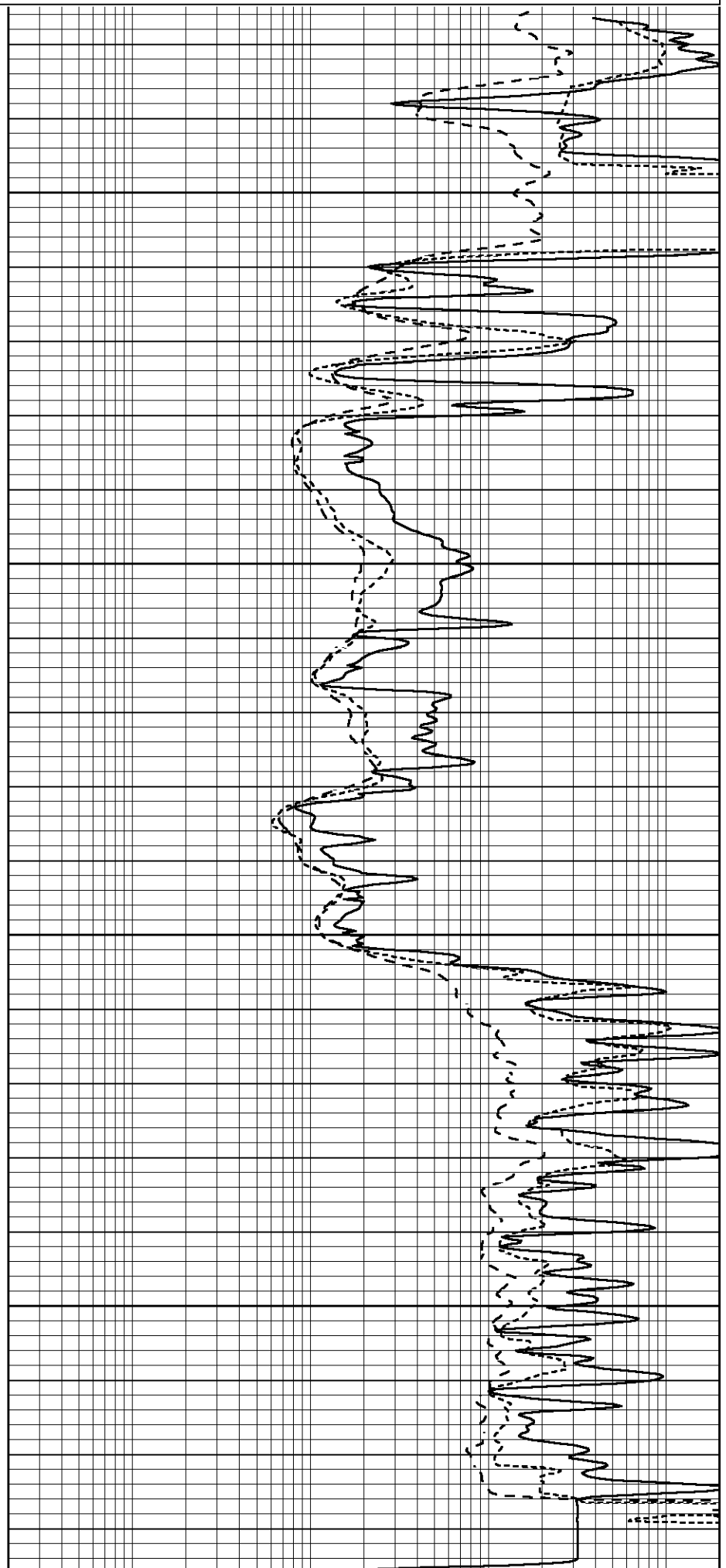


2100

2150

2200

2250



2000

0	GAMMA RAY (GAPI)	150	0.2	SHALLOW GUARD (Ohm-m)	2000
-100	SP (mV)	100	0.2	MEDIUM INDUCTION (Ohm-m)	2000
-250	Rxo/Rt	50	0.2	DEEP INDUCTION (Ohm-m)	2000

Calibration Report

Database File 6757pe.db
 Dataset Pathname pass3M
 Dataset Creation Fri Jul 15 15:41:30 2022

Dual Induction Calibration Report

Serial-Model: FW1410-55-Probe
 Surface Cal Performed: Thu Jun 30 01:48:00 2022
 Downhole Cal Performed: Tue Feb 19 11:44:24 2019
 After Survey Verification Performed: Tue Feb 19 11:44:27 2019

Surface Calibration

Loop:	Readings			References			Results	
	Air	Loop		Air	Loop		m	b
Deep	0.011	0.656	V	1.000	400.000	mmho/m	650.000	-1.000
Medium	-0.000	0.731	V	1.000	464.000	mmho/m	632.856	-7.000
Internal:	Zero	Cal		Zero	Cal		m	b
Deep	0.007	0.649	V	0.000	400.000	mmho/m	623.784	-4.595
Medium	0.004	0.743	V	0.000	464.000	mmho/m	627.284	-2.251

Downhole Calibration

	Readings			References			Results	
	Zero	Cal		Zero	Cal		m'	b'
Deep	-0.824	395.917	mmho/m	-0.976	397.550	mmho/m	1.004	-0.149
Medium	3.565	471.327	mmho/m	3.468	471.590	mmho/m	1.001	-0.099
LL3		7.503	V		1500.000	Ohm-m		
		0.001	V		20.000	Ohm-m		
		-7.481	V		3745.000	mmho-m		

After Survey Verification

	Readings			Targets			Results	
	Zero	Cal		Zero	Cal		m'	b'
Deep	0.000	0.000	mmho/m	-0.824	395.917	mmho/m	1.000	0.000
Medium	0.000	0.000	mmho/m	3.565	471.327	mmho/m	1.000	0.000
LL3		0.000	Ohm-m		1500.000	Ohm-m		
		0.000	Ohm-m		20.000	Ohm-m		
		0.000	mmho-m		3745.000	mmho-m		

Litho Density Calibration Report

Serial: 005 Model: Litho_Ver3

Master Calibration

Performed Fri May 13 13:54:56 2022

	Background	Magnesium	Aluminum	Aluminum+Fe	
Window 1	1363.1	46477.8	11515.9	9589.9	cps
Window 2	1239.4	36488.4	9270.1	7998.9	cps
Window 3	1044.3	20488.1	5500.7	4913.3	cps
Window 4	315.7	358.7	321.5	319.5	cps
Long Space	0.0	35249.0	8030.7	6759.4	cps
Short Space	1.4	9675.7	6523.4	5391.9	cps
Rho		1 7100	2 5900	0 0000	g/cc

Pe		2.0000	2.7500	5.7900	
Rib Angle	: 45.1	Rib Slope	: 1.003	Density/Spine Ratio	: 0.575
Spine Angle	: 75.1	Spine Slope	: 3.752	Spine Intercept	: -24.0

Before Survey Verification

Performed Wed Dec 31 18:00:00 1969

Window 1	0.0	0.0	0.0	0.0	cps
Window 2	0.0	0.0	0.0	0.0	cps
Window 3	0.0	0.0	0.0	0.0	cps
Window 4	0.0	0.0	0.0	0.0	cps
Long Space	0.0	0.0	0.0	0.0	cps
Short Space	0.0	0.0	0.0	0.0	cps
Measured Rho		0.0000	0.0000	0.0000	g/cc
Measured Correction		0.0000	0.0000	0.0000	g/cc
Measured Pe			0.0000	0.0000	

After Survey Verification

Performed Wed Dec 31 18:00:00 1969

Window 1	0.0	0.0	0.0	0.0	cps
Window 2	0.0	0.0	0.0	0.0	cps
Window 3	0.0	0.0	0.0	0.0	cps
Window 4	0.0	0.0	0.0	0.0	cps
Long Space	0.0	0.0	0.0	0.0	cps
Short Space	0.0	0.0	0.0	0.0	cps
Measured Rho		0.0000	0.0000	0.0000	g/cc
Measured Correction		0.0000	0.0000	0.0000	g/cc
Measured Pe			0.0000	0.0000	

Compensated Neutron Calibration Report

Serial Number: 080621PMC
Tool Model: NABORS

PRE-SURVEY VERIFICATION

Detector	Readings	Measured	Target
Short Space	cps		
Long Space	cps	pu	pu

POST-SURVEY VERIFICATION

Detector	Readings	Measured	Target
Short Space	cps		
Long Space	cps	pu	pu

Gamma Ray Calibration Report

Serial Number: 7
Tool Model: Probe1
Performed: Thu May 26 08:56:46 2022

Calibrator Value: 1.0 GAPI

Background Reading: 0.0 cps
Calibrator Reading: 1.0 cps

Sensitivity: 0.5500 GAPI/cps

