

SONIC
LOG



Company DARRAH OIL COMPANY, LLC.
Well YOUNKIN #2-10
Field EAGLE BLUFF
County LOGAN State KANSAS

Location: API #: 15-109-21640-0000
1831' FSL & 985' FWL
SEC 10 TWP 14S RGE 34W
Permanent Datum GROUND LEVEL Elevation 3021
Log Measured From KELLY BUSHING 11' A.G.L.
Drilling Measured From KELLY BUSHING
Other Services CDL/CNL/PE DIL/MEL
Elevation
K.B. 3032
D.F. 3030
G.L. 3021

Date	7/12/22
Run Number	TWO
Depth Driller	4720
Depth Logger	4722
Bottom Logged Interval	4714
Top Log Interval	200
Casing Driller	8 5/8"@255'
Casing Logger	252
Bit Size	7 7/8"
Type Fluid in Hole	CHEMICAL MUD
Density / Viscosity	9.5/55
pH / Fluid Loss	9.5/10.4
Source of Sample	FLOWLINE
Rm @ Meas. Temp	.400@93F
Rmf @ Meas. Temp	.300@93F
Rmc @ Meas. Temp	.480@93F
Source of Rmf / Rmc	MEASURED
Rm @ BHT	.305@122F
Time Circulation Stopped	2.5 HOURS
Time Logger on Bottom	3:15 P.M.
Maximum Recorded Temperature	122F
Equipment Number	8916
Location	HAYS, KANSAS
Recorded By	JEFF LUEBBERS
Witnessed By	SETH EVENSON

<<< Fold Here >>>

All interpretations are opinions based on inferences from electrical or other measurements and we cannot and do not guarantee the accuracy or correctness of any interpretation, and we shall not, except in the case of gross or willful negligence on our part, be liable or responsible for any loss, costs, damages, or expenses incurred or sustained by anyone resulting from any interpretation made by any of our officers, agents or employees. These interpretations are also subject to our general terms and conditions set out in our current Price Schedule.

Comments

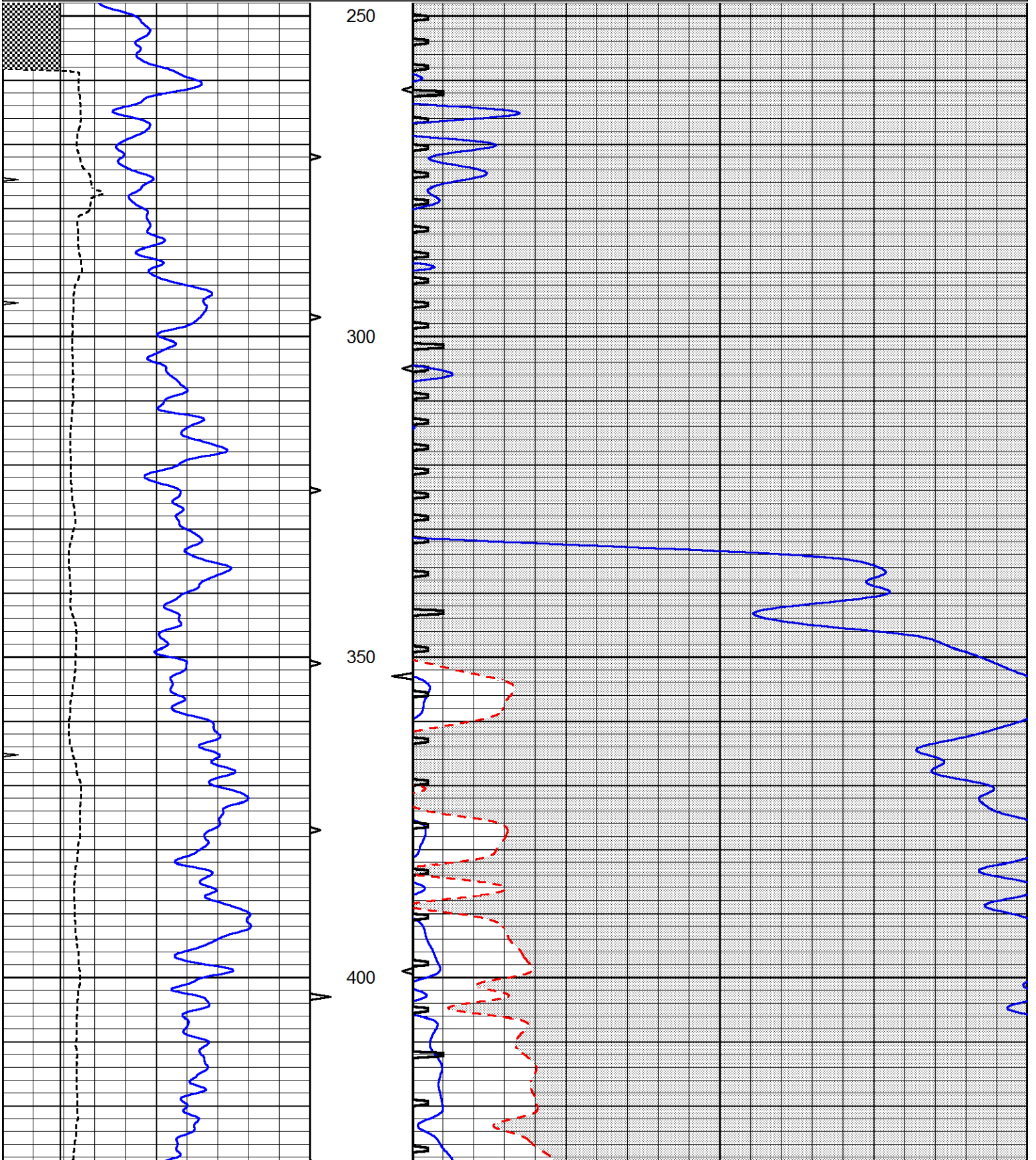
THANK YOU FOR USING ELI WIRELINE, HAYS, KS. (785) 628-6395
DIRECTIONS:
OAKLEY, KS., 9S. ON HWY 83 TO "QUAIL RD.", 7W. TO "RD. 370", 1 S. TO "PLAINS RD.", 2W. TO "RD. 350", S. TO "INDIAN RD.", 4W. TO TANK BATTERY, 2N. ON TRAIL

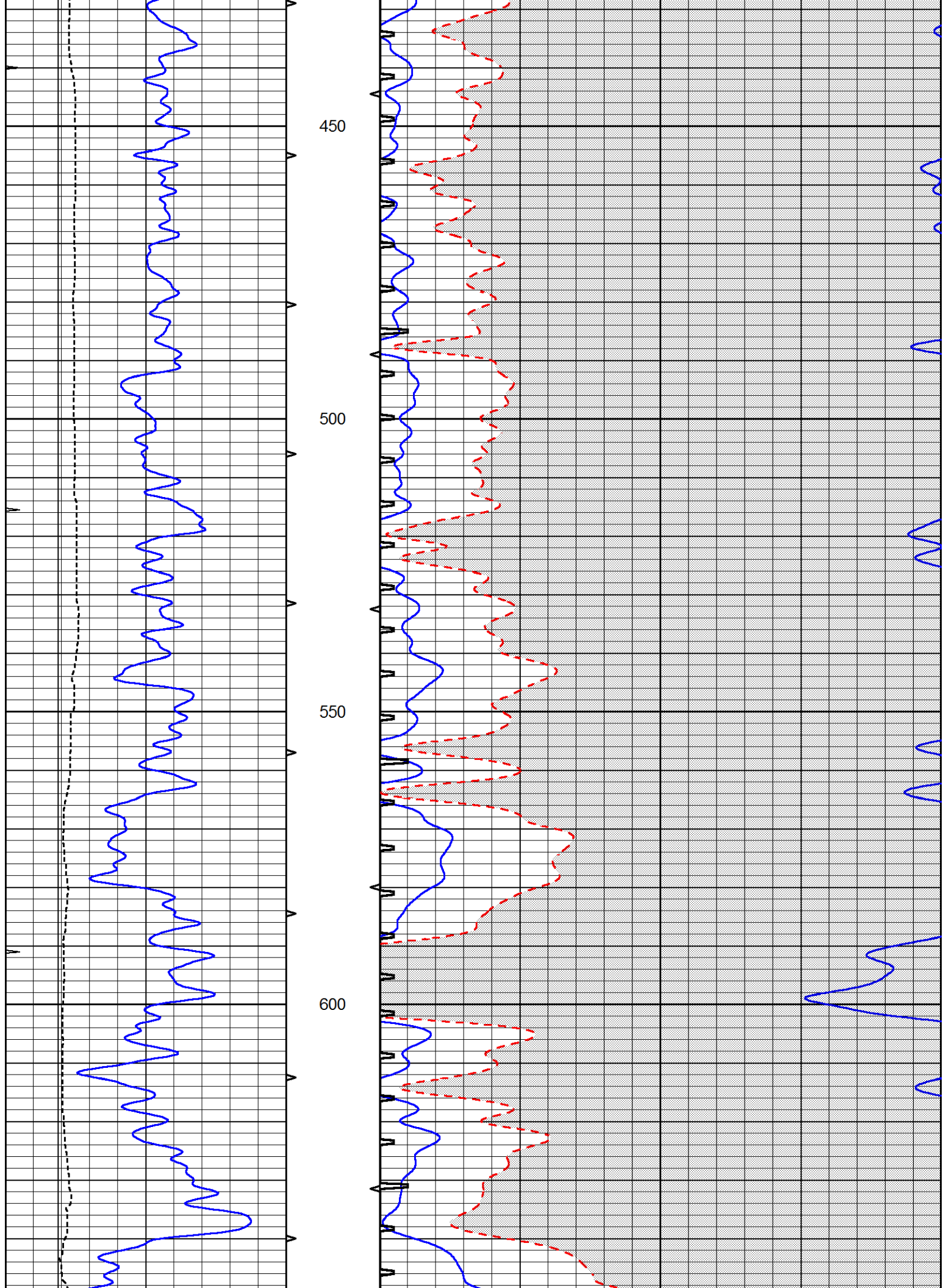


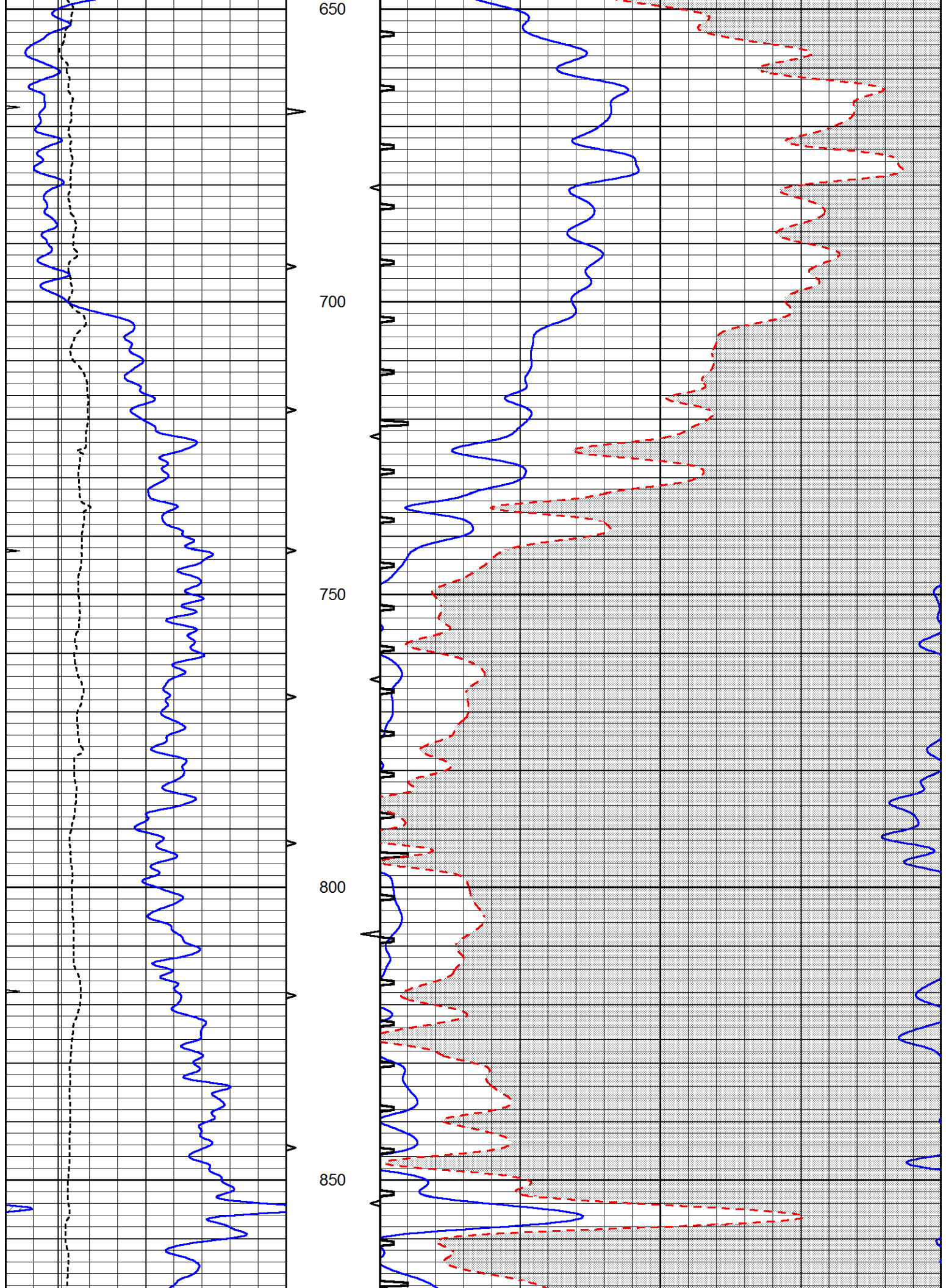
MAIN SECTION

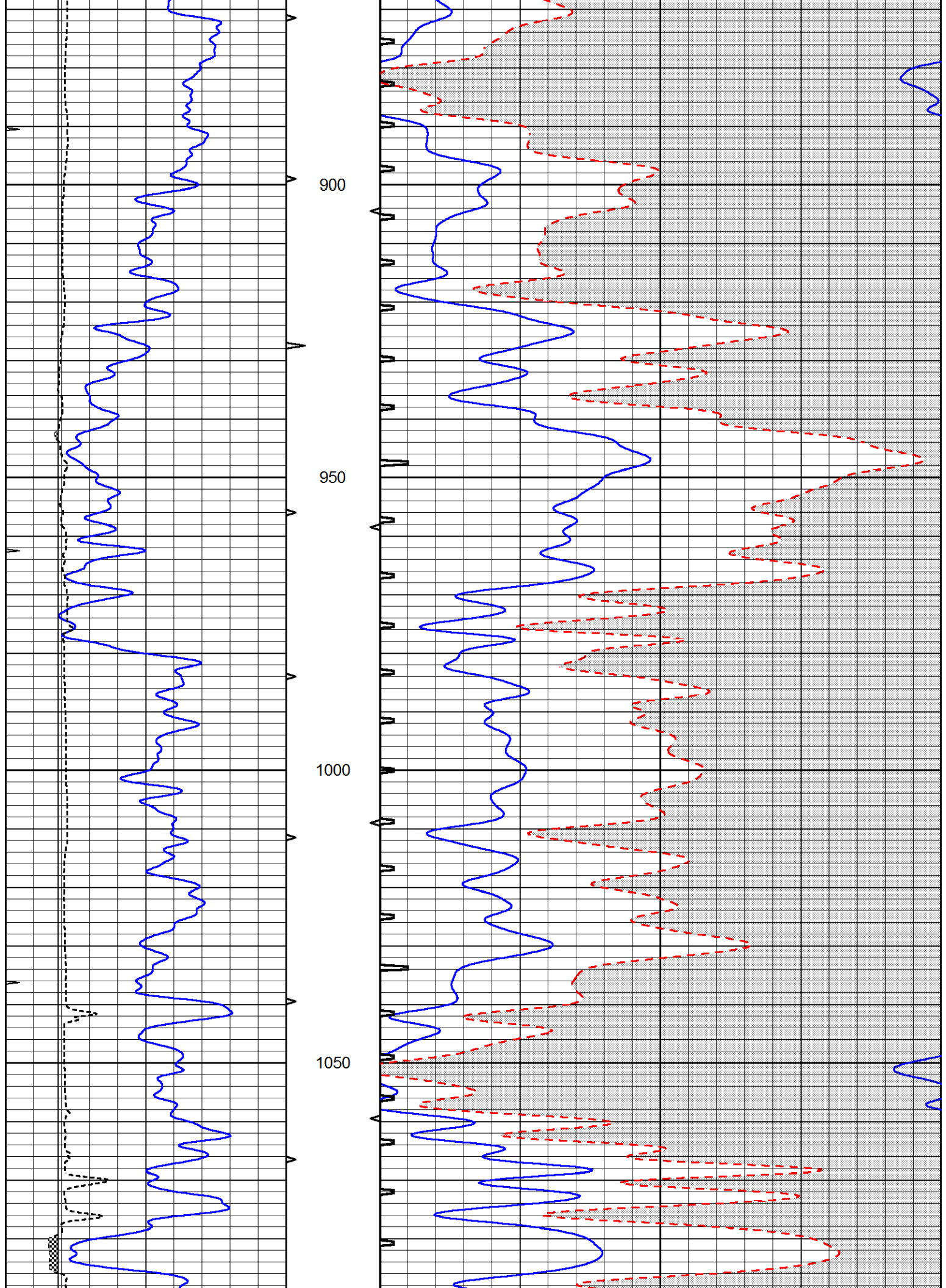
Database File 6711pe.db
 Dataset Pathname pass6.4
 Presentation Format _slt
 Dataset Creation Tue Jul 12 17:20:26 2022
 Charted by Depth in Feet scaled 1:240

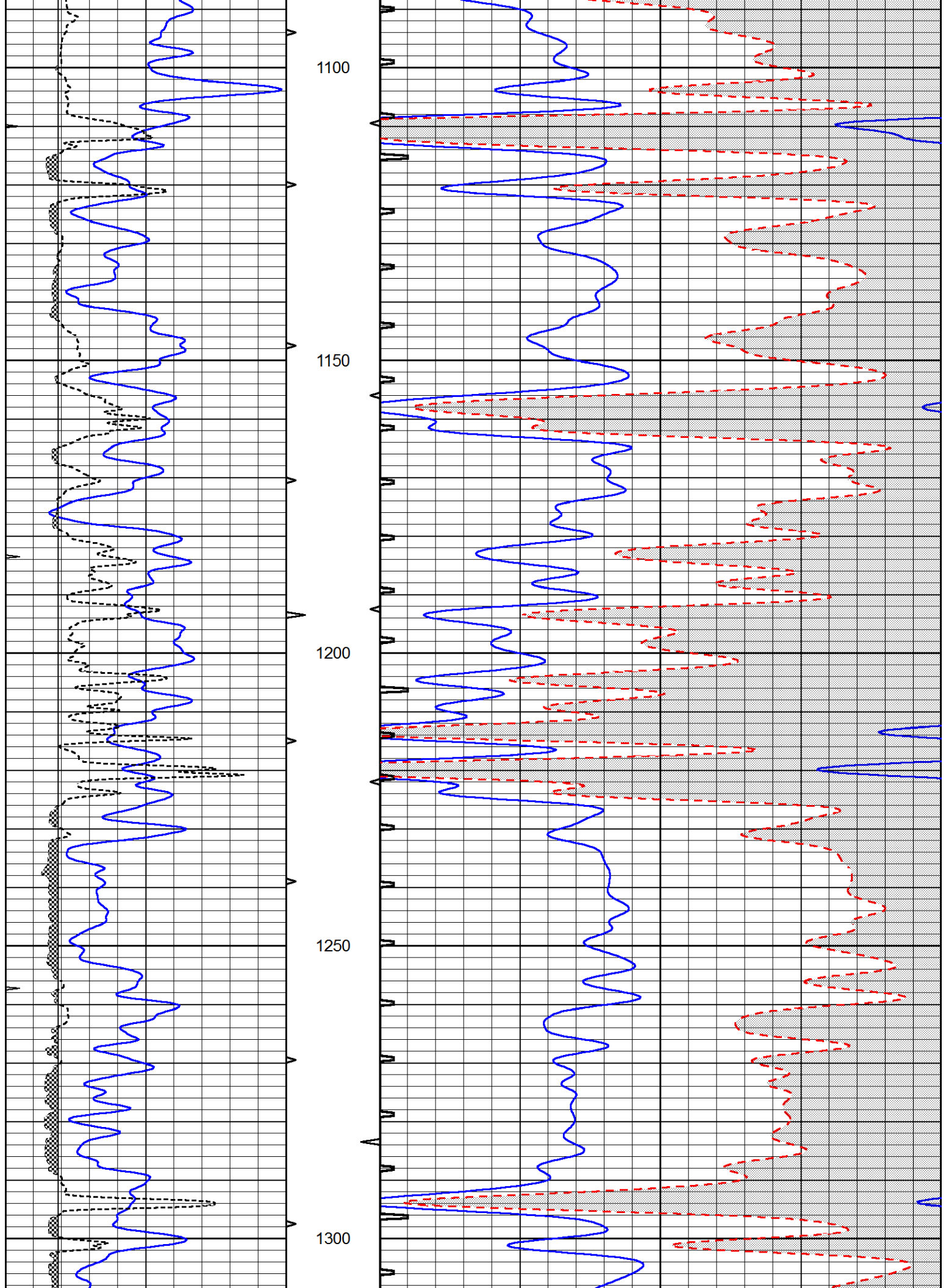
0	GAMMA RAY (GAPI)	150	ABHV	140	DELTA TIME (usec/ft)	40
0	MINMK	20	10 (ft3) 0	30	SONIC POROSITY (pu)	-10
6	MELCAL (in)	16	TBHV	0	ITT (msec)	20
			0 (ft3) 10			

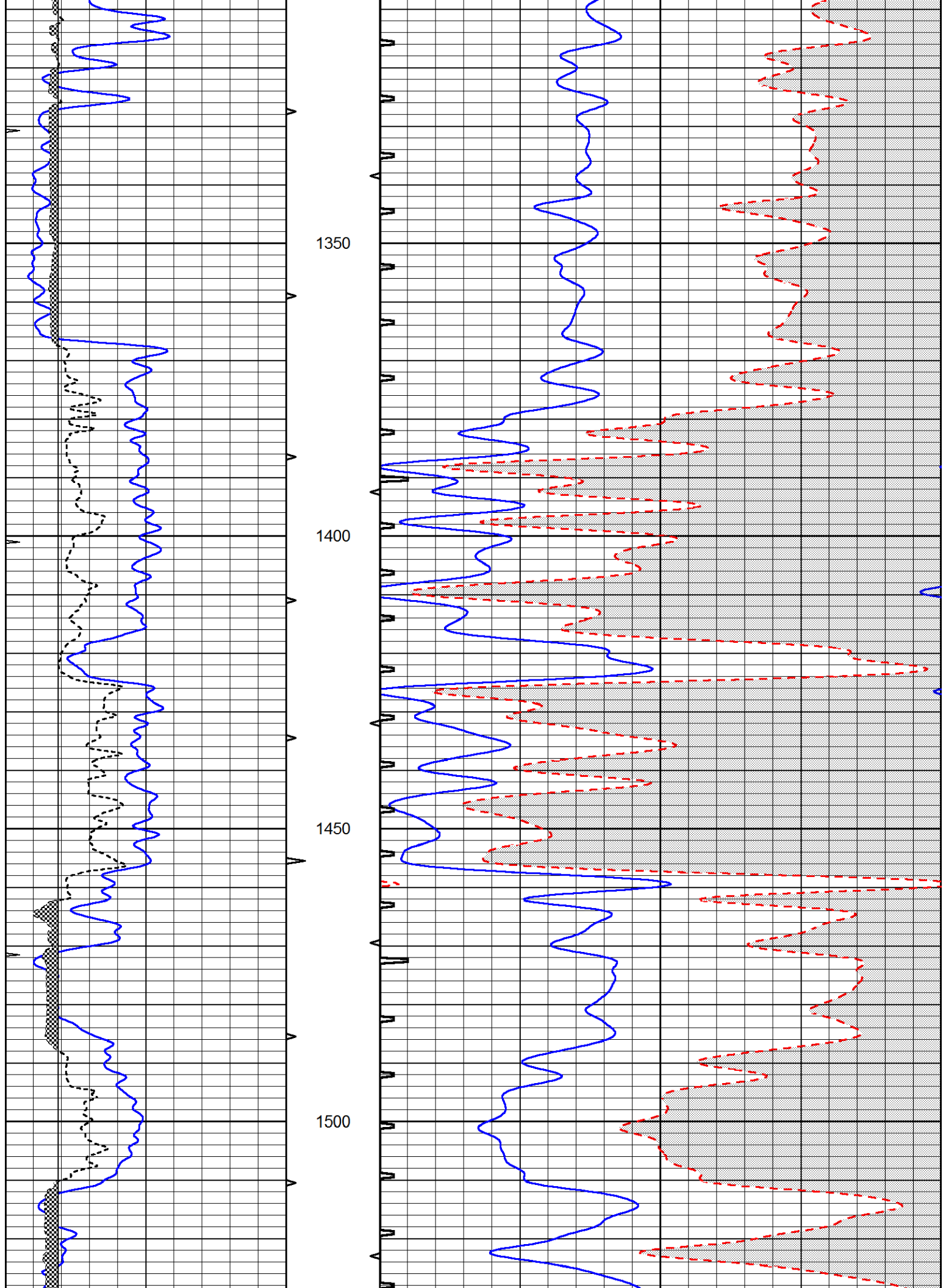


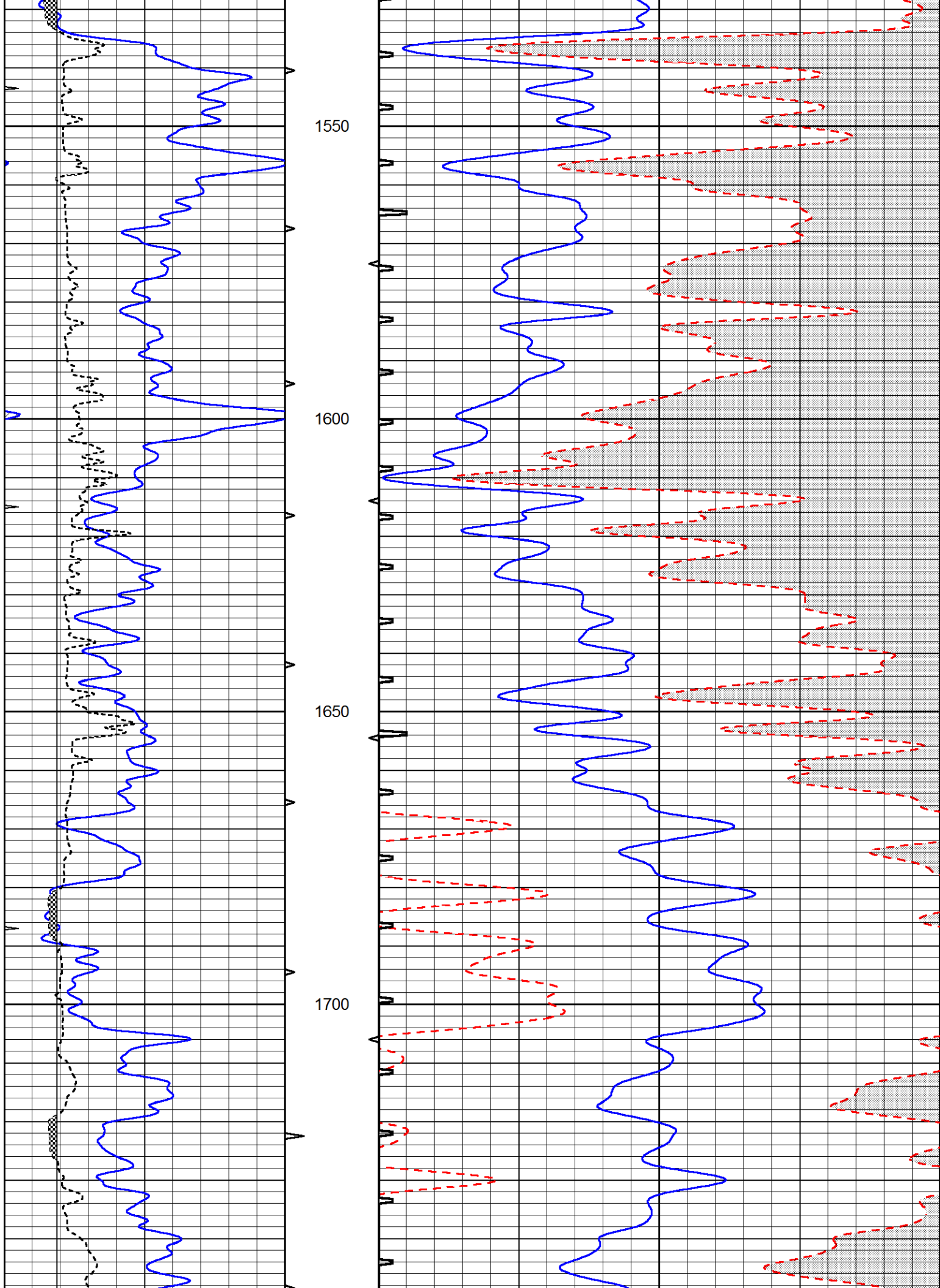


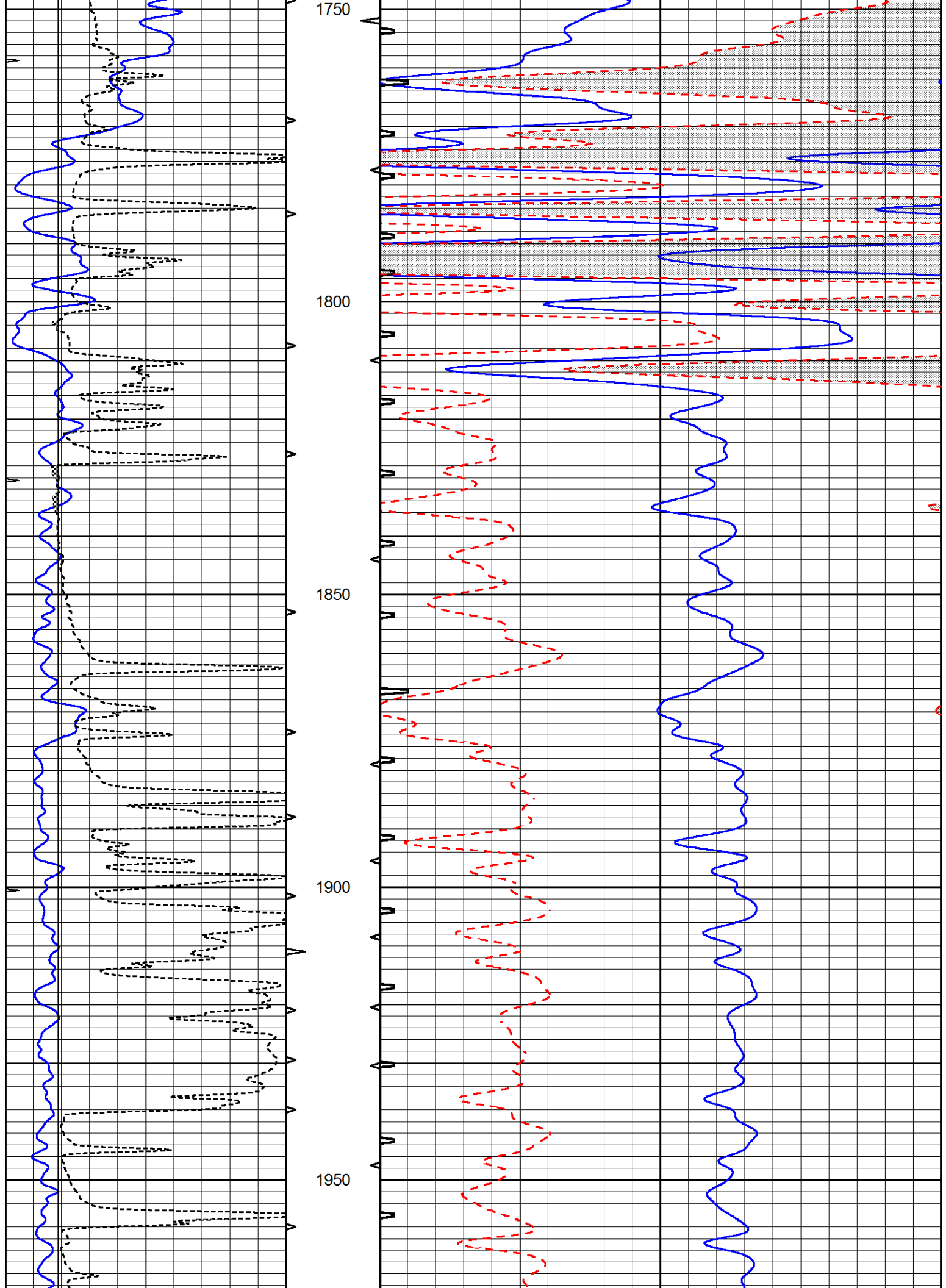


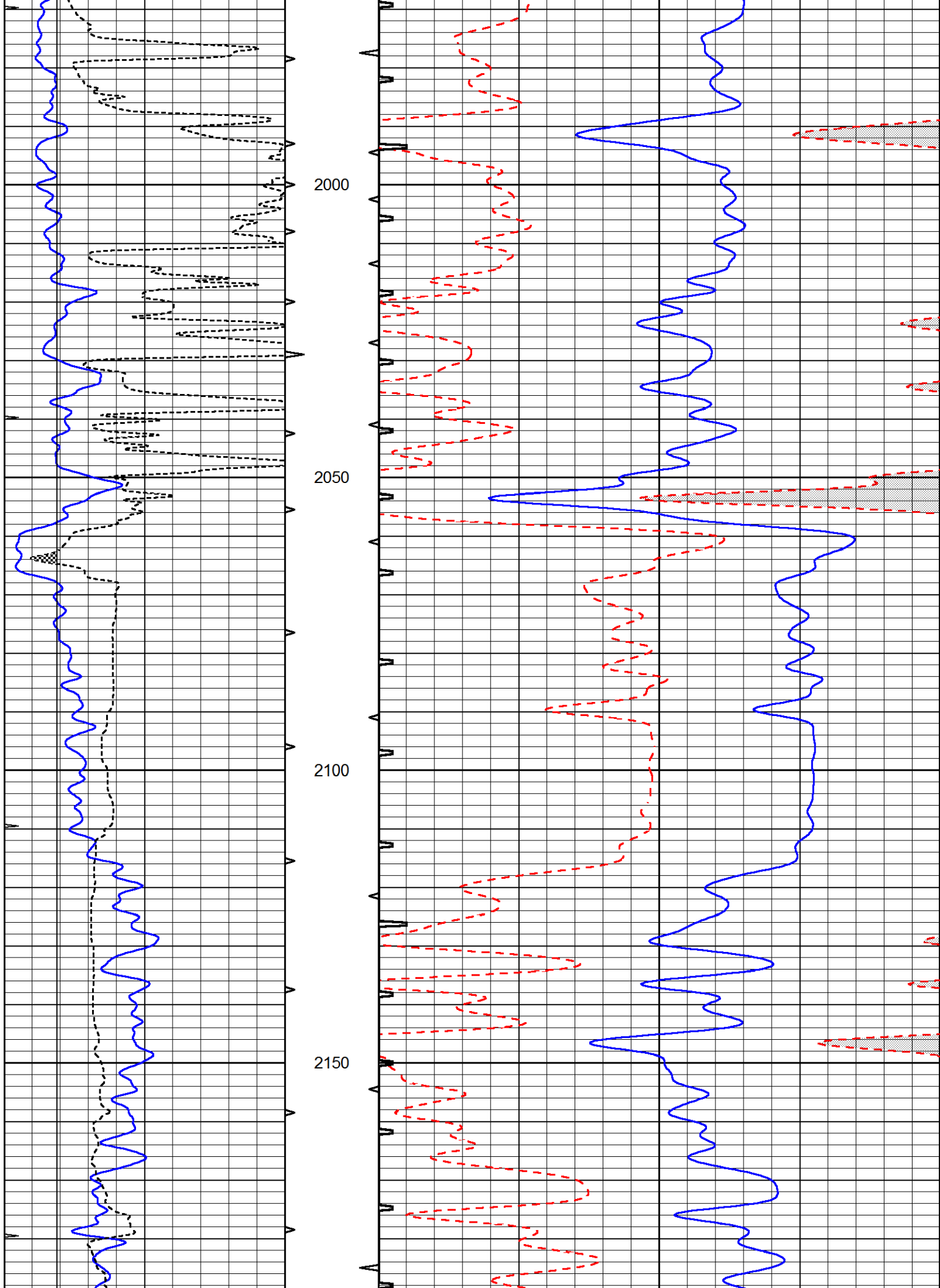


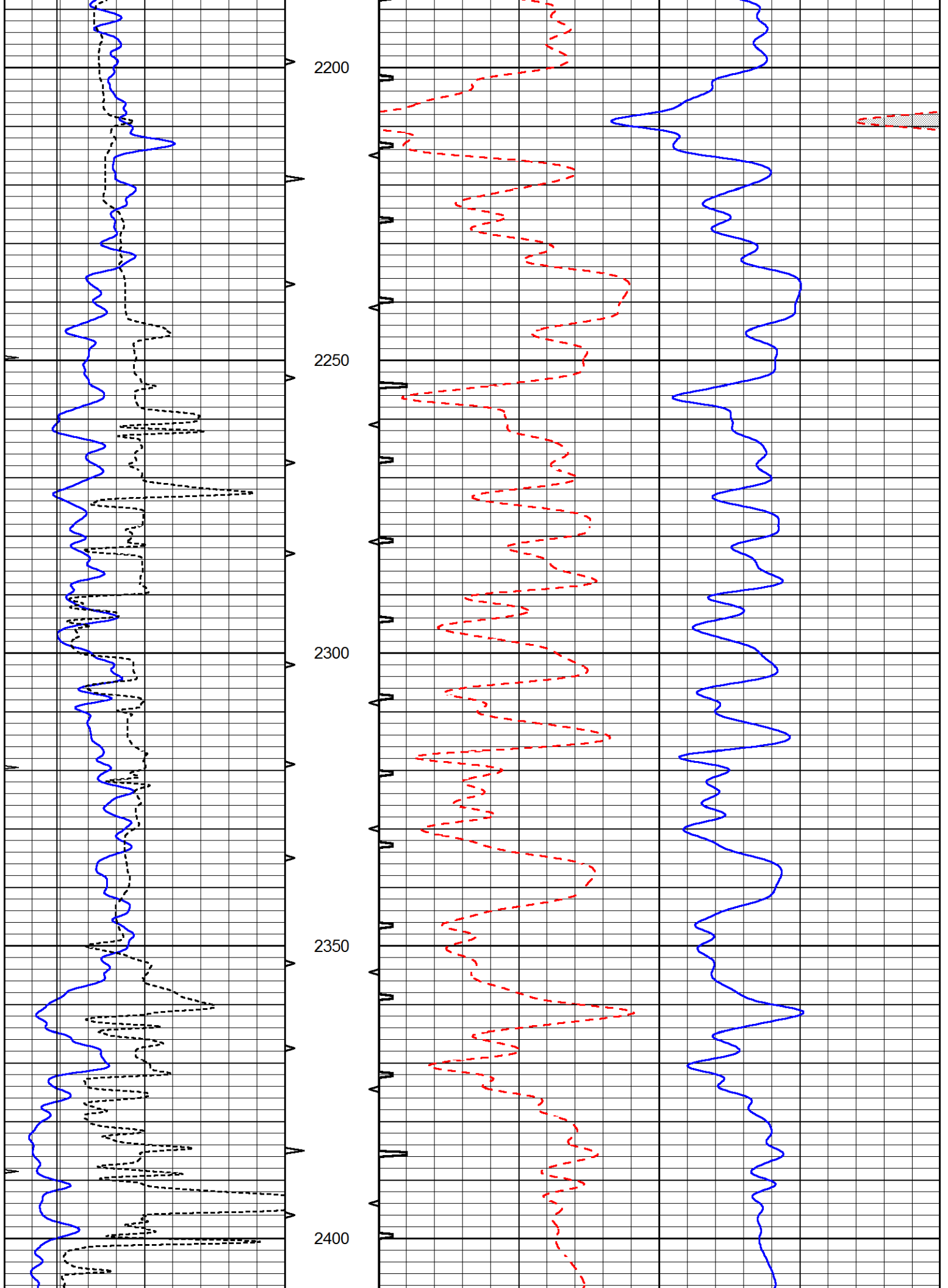


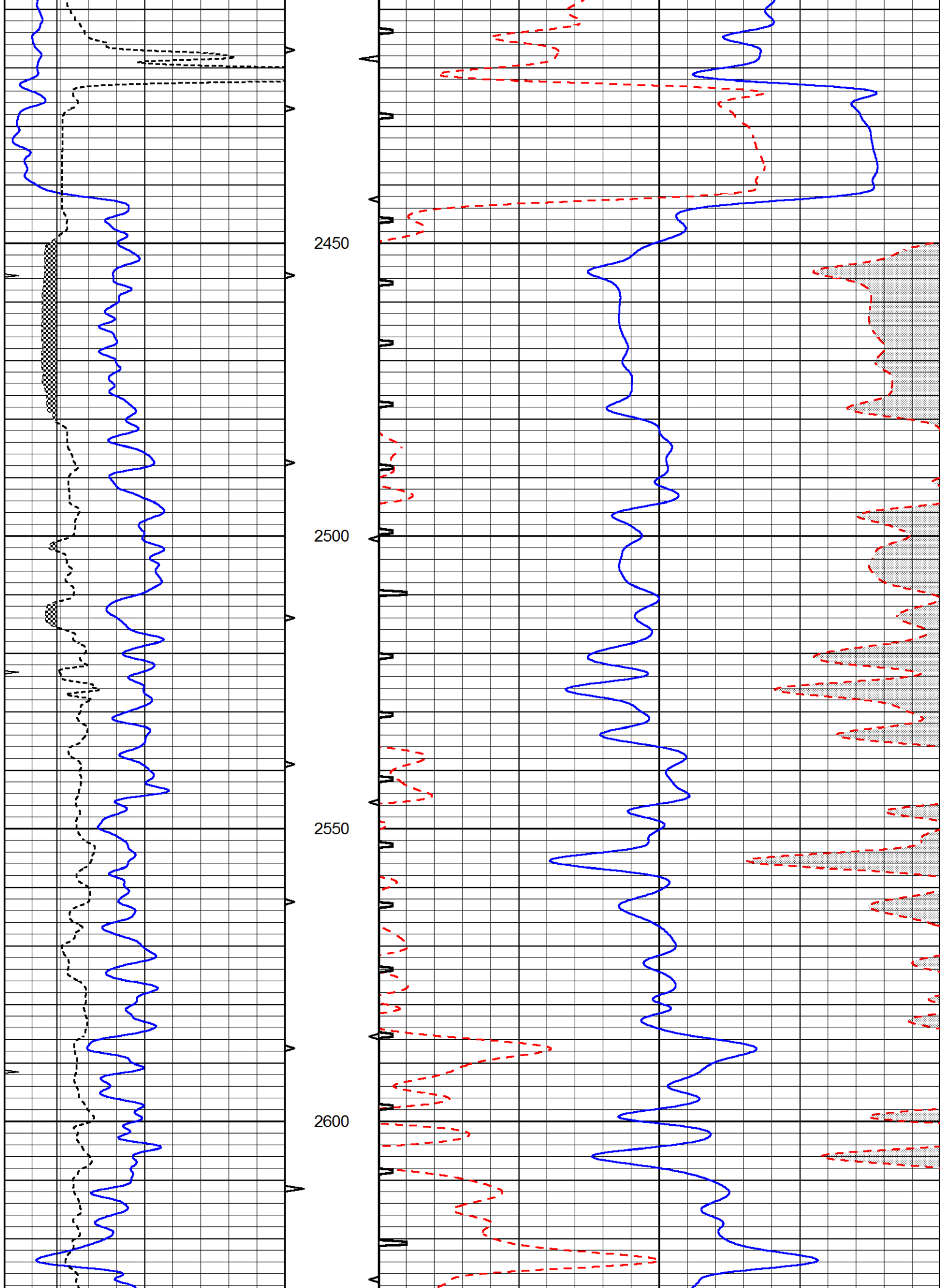


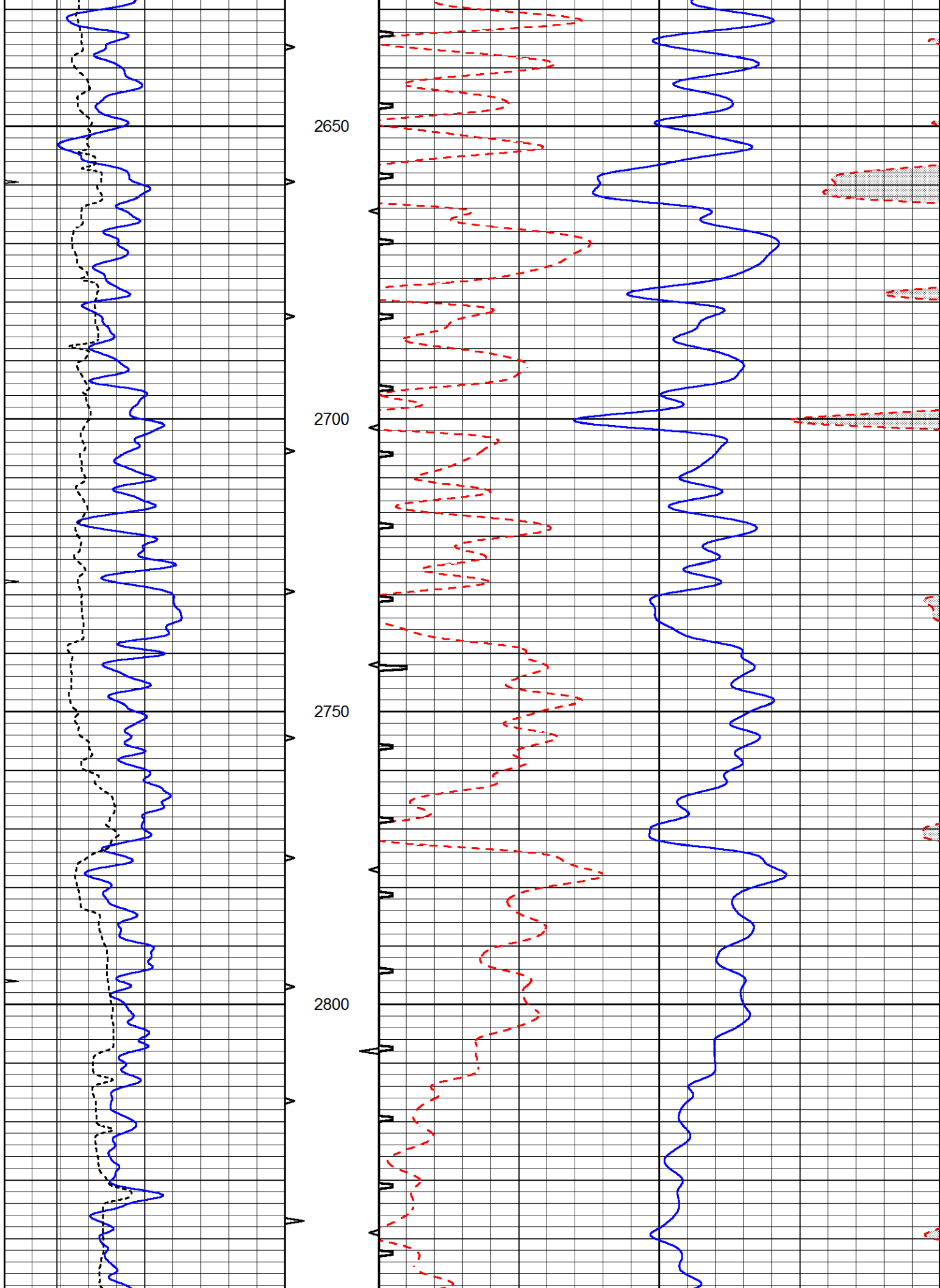


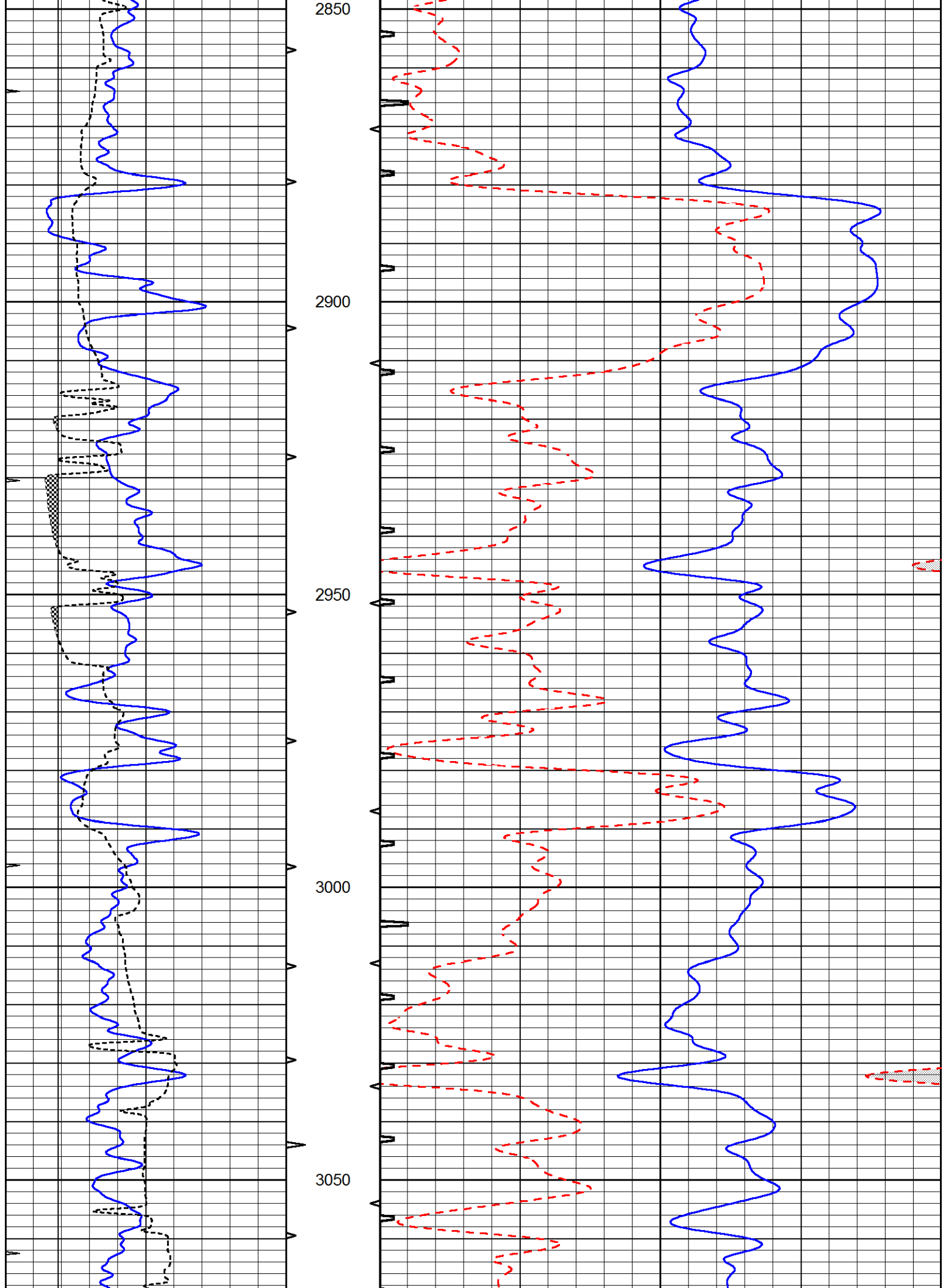


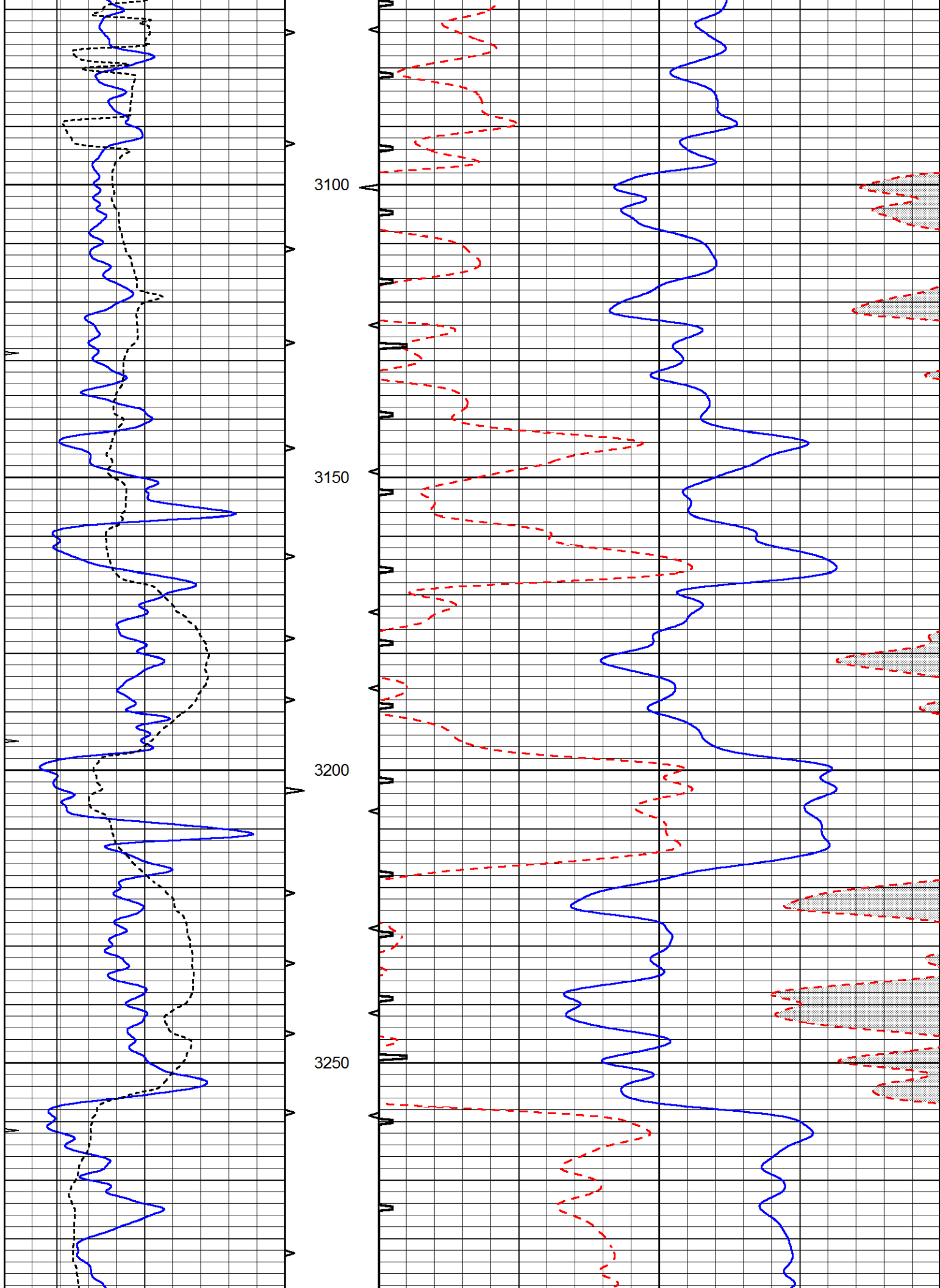


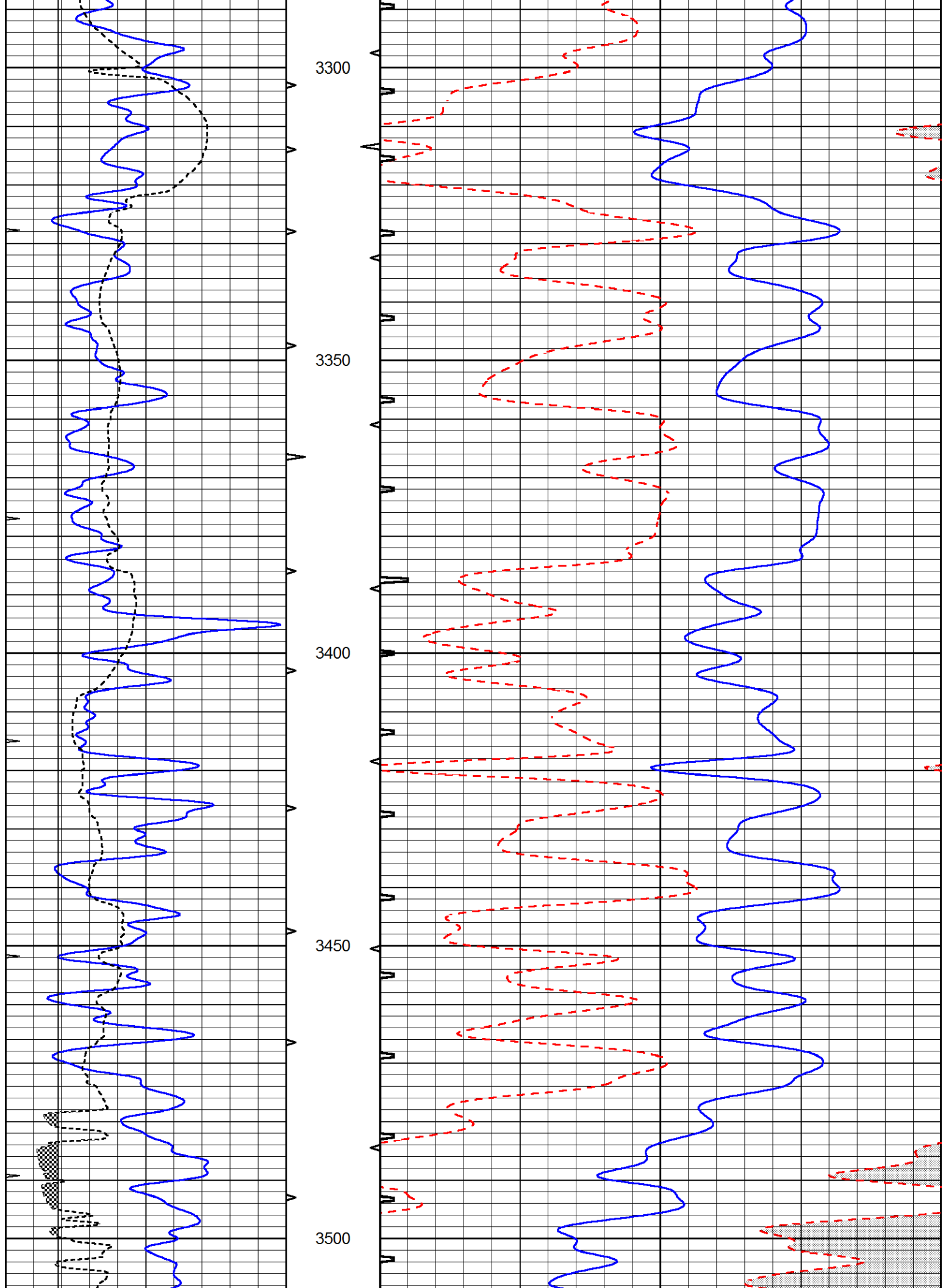


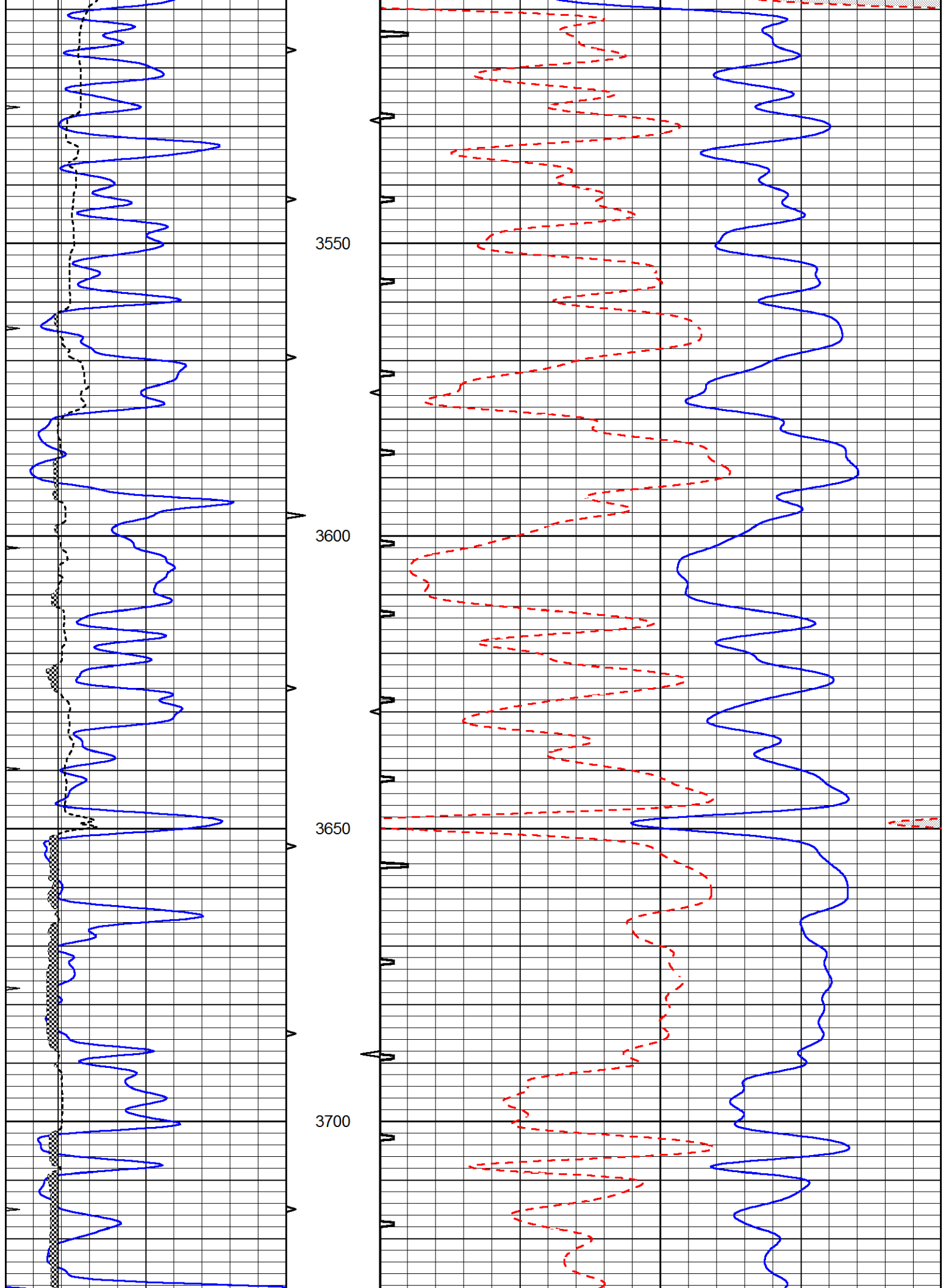


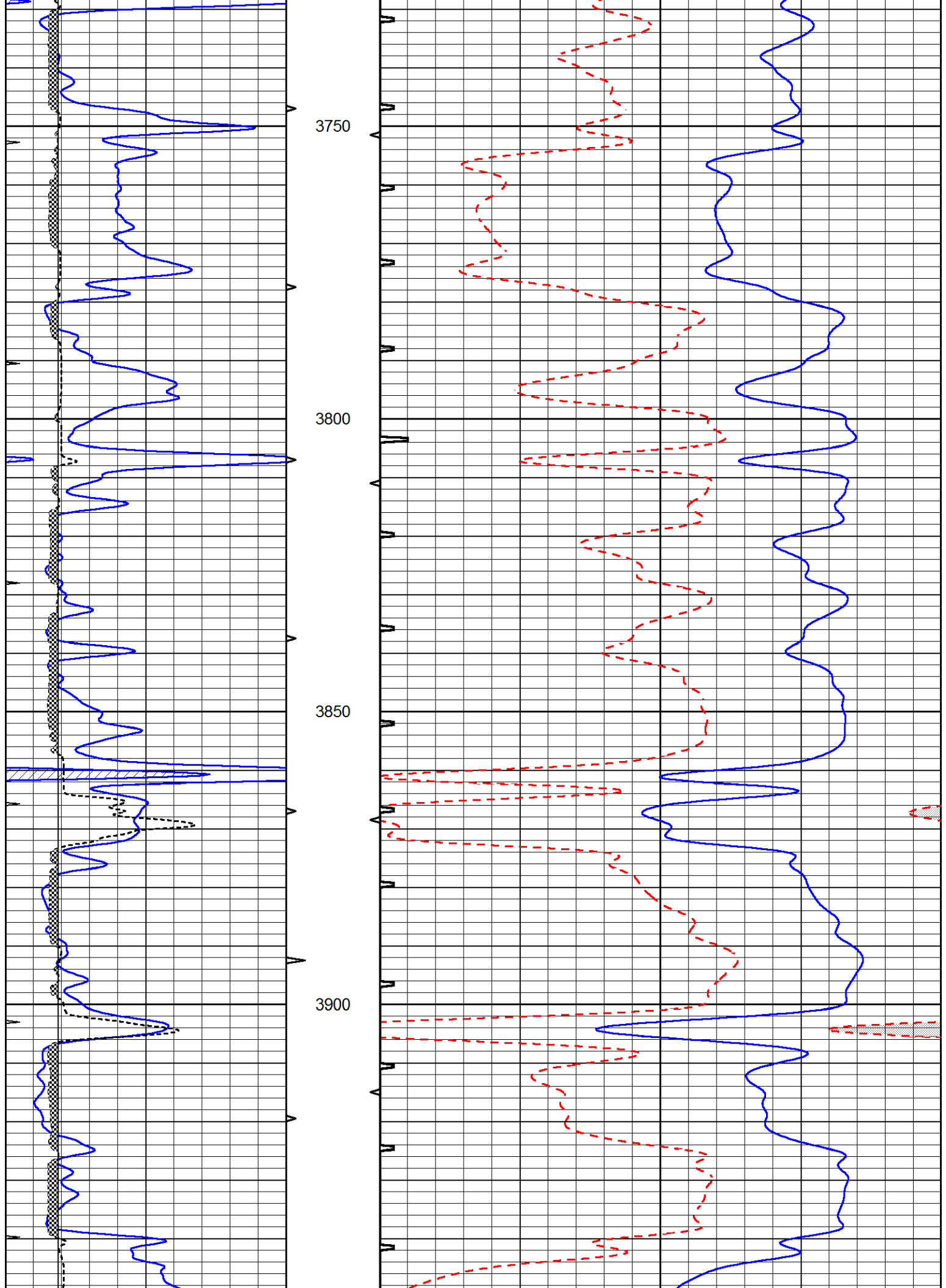


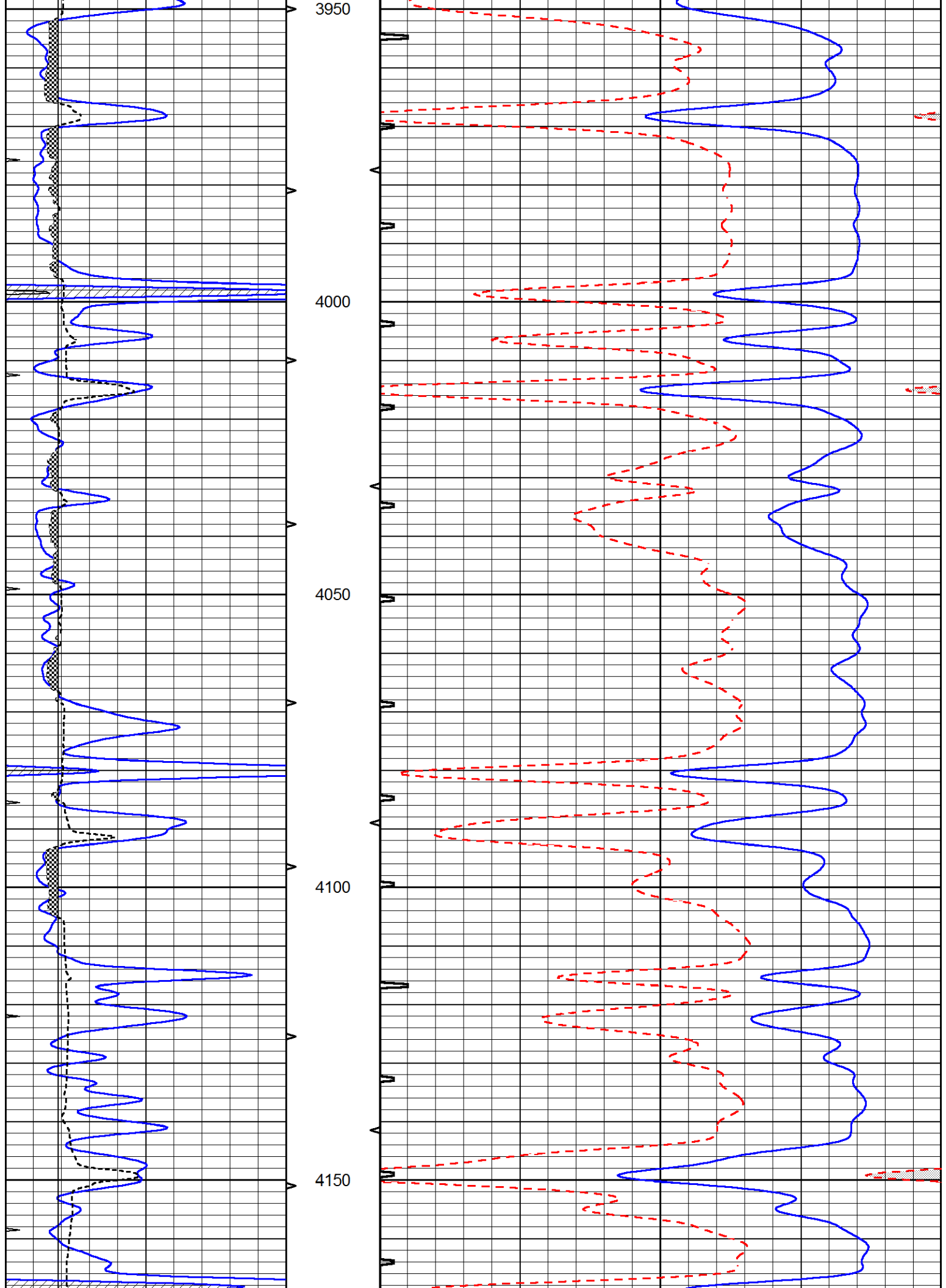


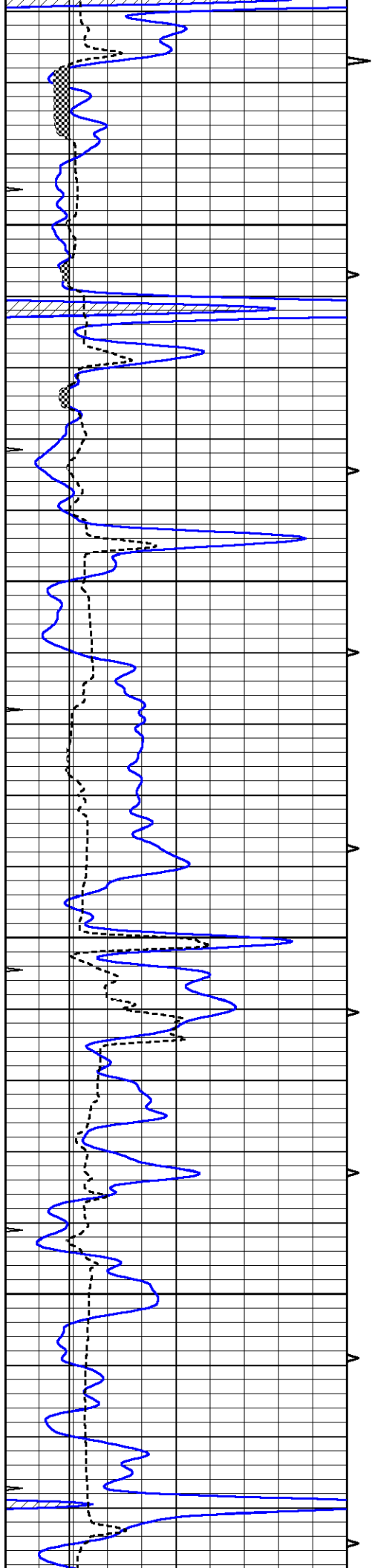










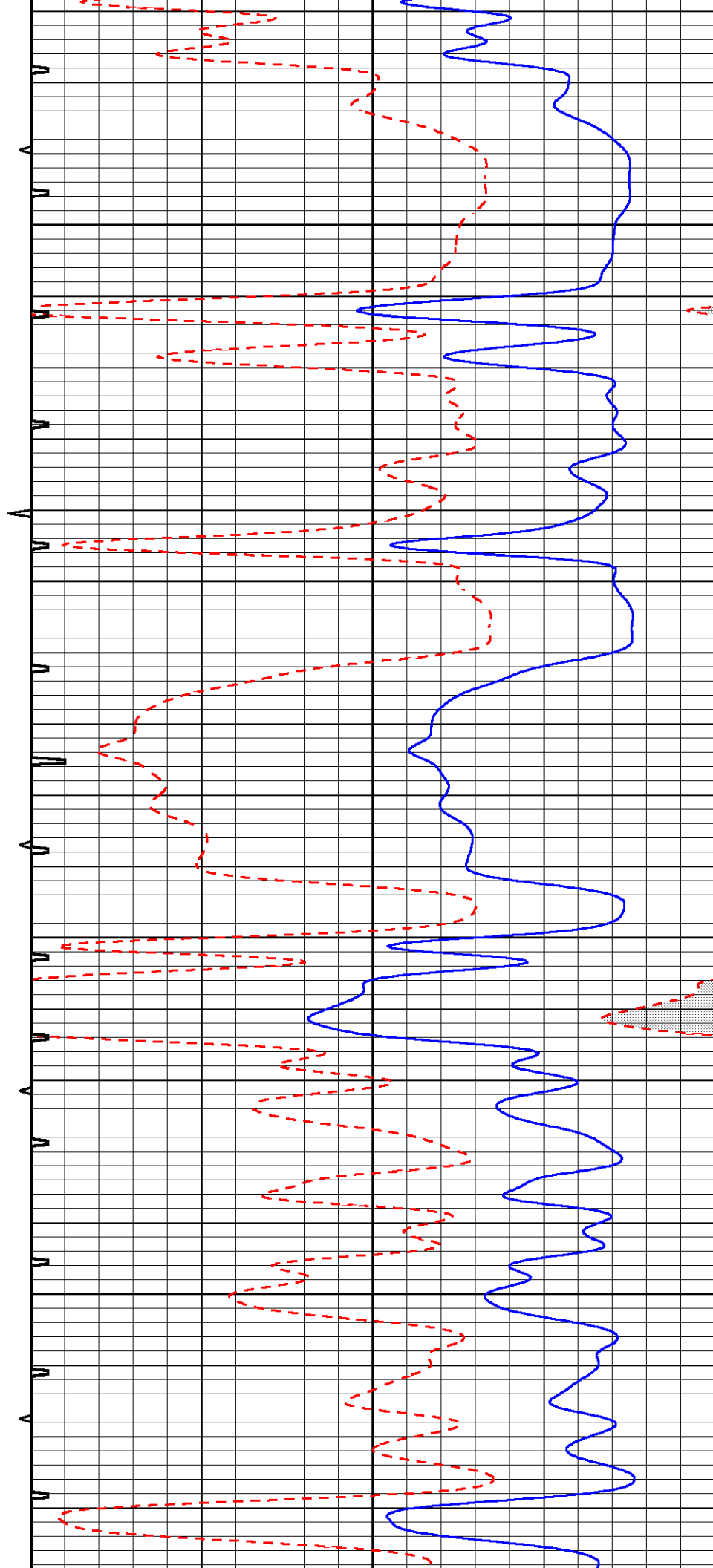


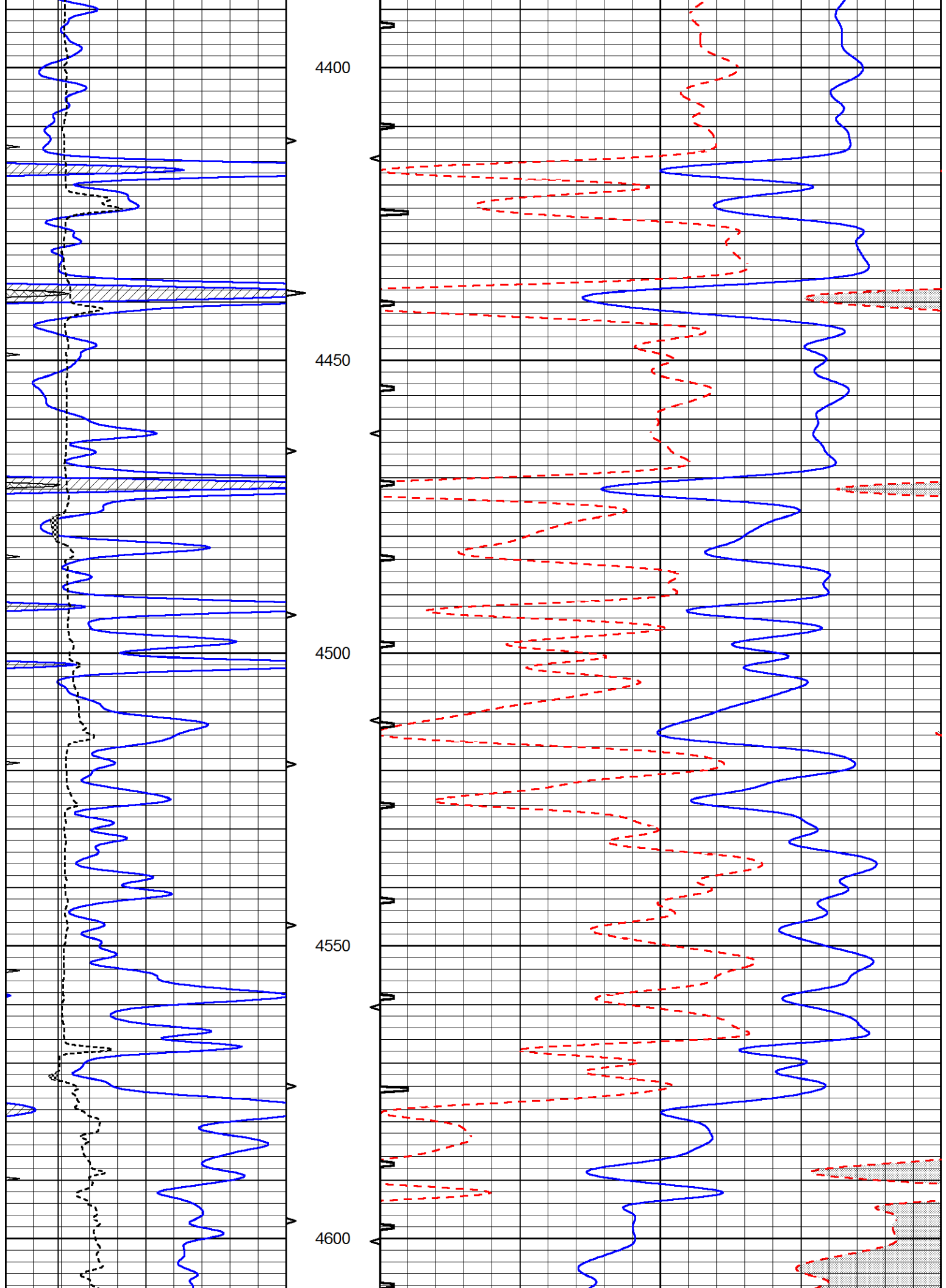
4200

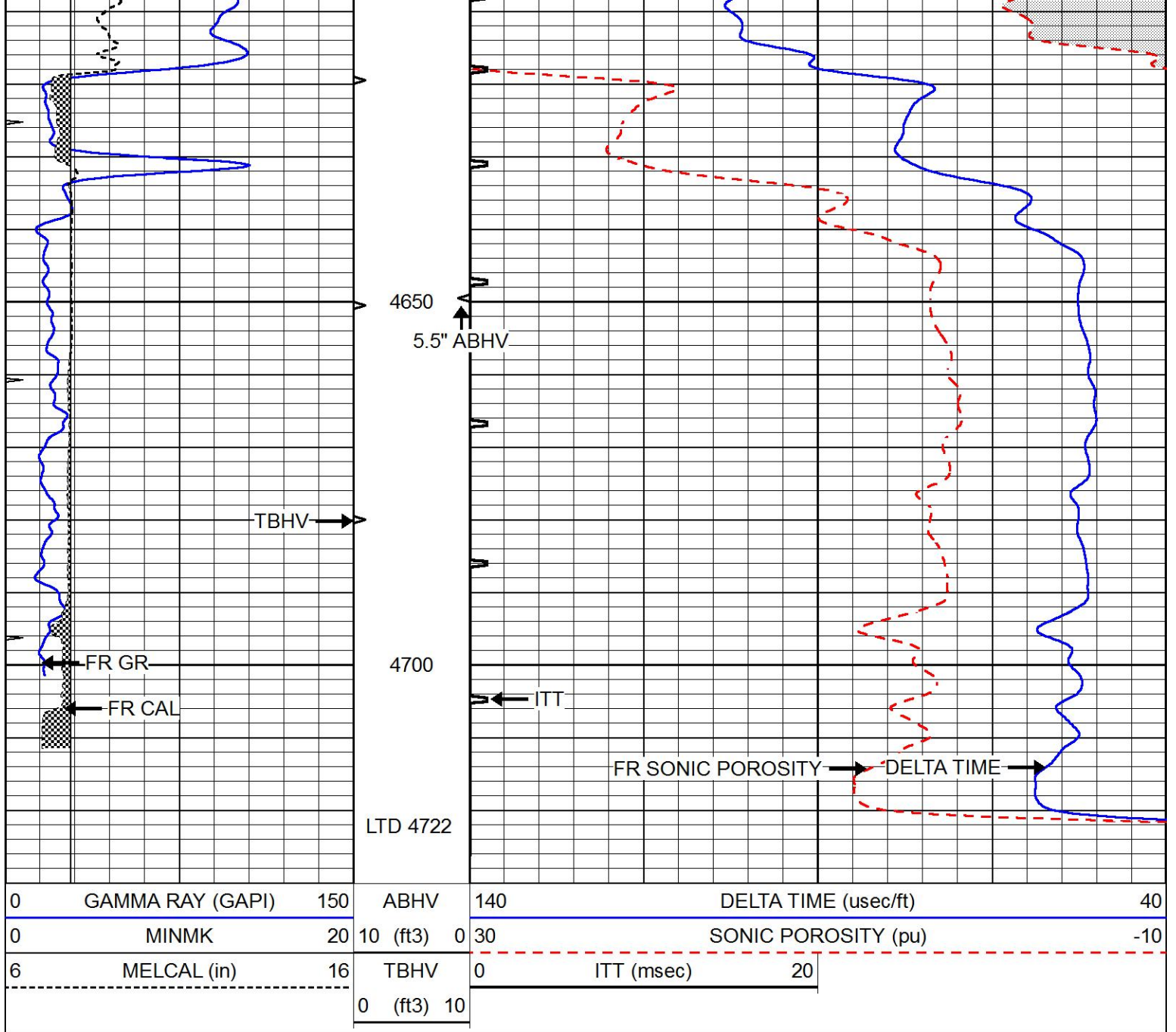
4250

300

4350



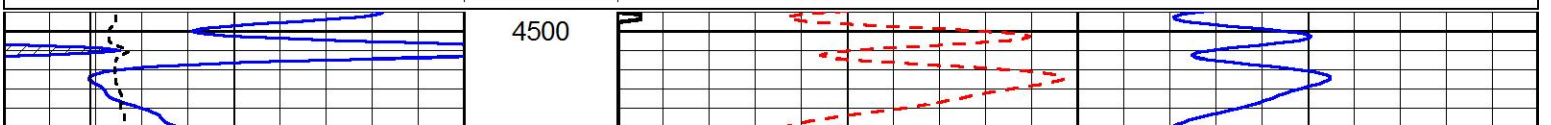


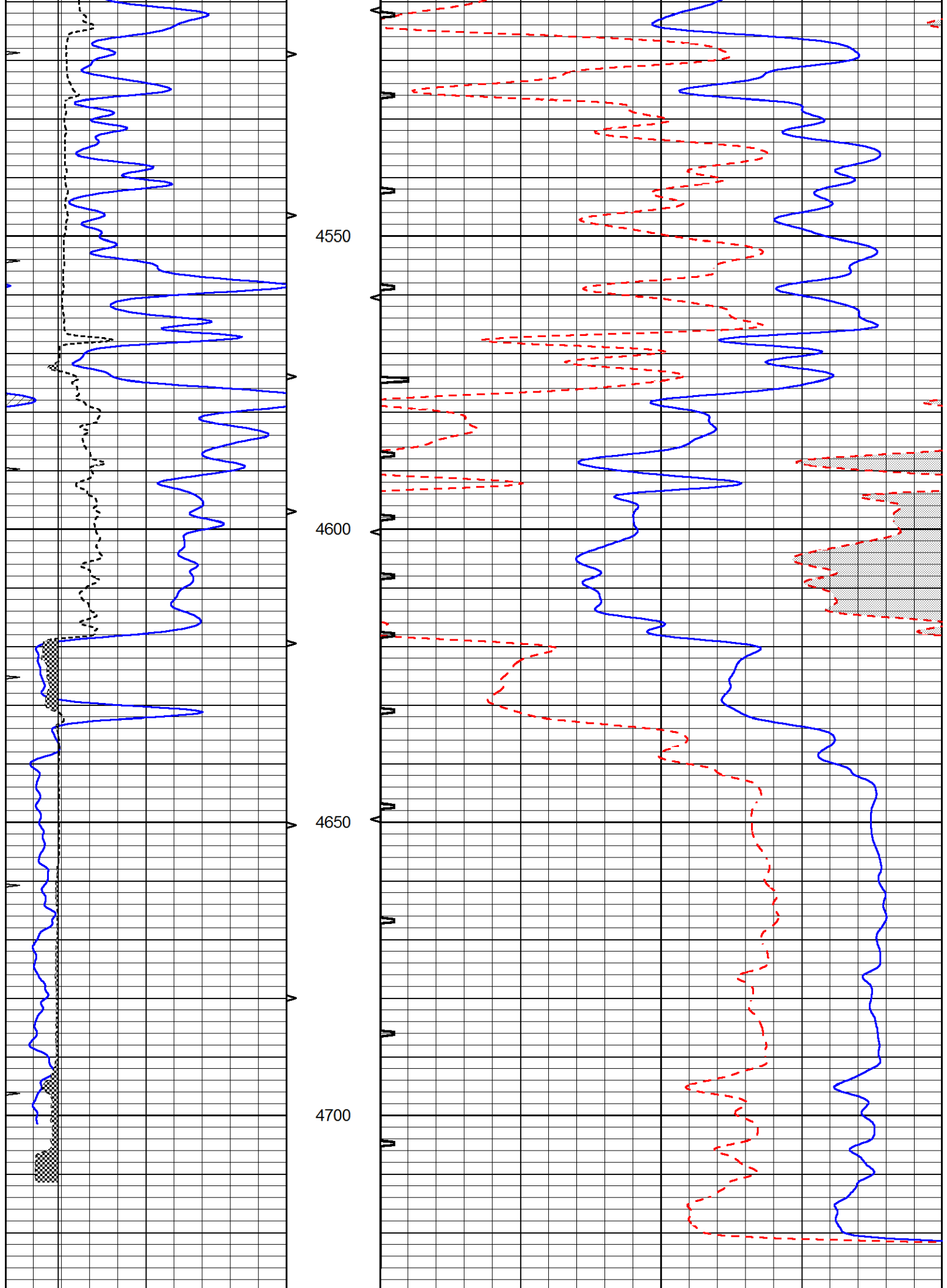


REPEAT SECTION

Database File 6711pe.db
 Dataset Pathname pass5.3
 Presentation Format _slt
 Dataset Creation Tue Jul 12 17:28:35 2022
 Charted by Depth in Feet scaled 1:240

0	GAMMA RAY (GAPI)	150	ABHV	140	DELTA TIME (usec/ft)	40
0	MINMK	20	10 (ft3) 0	30	SONIC POROSITY (pu)	-10
6	MELCAL (in)	16	TBHV	0	ITT (msec)	20
			0 (ft3) 10			





0	GAMMA RAY (GAPI)	150	ABHV	140	DELTA TIME (usec/ft)	40
0	MINMK	20	10 (ft3) 0	30	SONIC POROSITY (pu)	-10
6	MELCAL (in)	16	TBHV	0	ITT (msec)	20
			0 (ft3) 10			