

MICRO LOG



Company DARRAH OIL COMPANY, LLC.  
 Well YOUNKIN #2-10  
 Field EAGLE BLUFF  
 County LOGAN State KANSAS

Location: API #: 15-109-21640-0000  
 1831' FSL & 985' FWL  
 SEC 10 TWP 14S RGE 34W  
 Permanent Datum GROUND LEVEL Elevation 3021  
 Log Measured From KELLY BUSHING 11' A.G.L.  
 Drilling Measured From KELLY BUSHING  
 Other Services CDL/CNL/PE DIL/SONIC  
 Elevation K.B. 3032 D.F. 3030 G.L. 3021

Date	7/12/22
Run Number	TWO
Depth Driller	4720
Depth Logger	4722
Bottom Logged Interval	4720
Top Log Interval	3400
Casing Driller	8 5/8"@255'
Casing Logger	252
Bit Size	7 7/8"
Type Fluid in Hole	CHEMICAL MUD
Density / Viscosity	9.5/55
pH / Fluid Loss	9.5/10.4
Source of Sample	FLOWLINE
Rm @ Meas. Temp	.400@93F
Rmf @ Meas. Temp	.300@93F
Rmc @ Meas. Temp	.480@93F
Source of Rmf / Rmc	MEASURED
Rm @ BHT	.305@122F
Time Circulation Stopped	2.5 HOURS
Time Logger on Bottom	3:15 P.M.
Maximum Recorded Temperature	122F
Equipment Number	8916
Location	HAYS, KANSAS
Recorded By	JEFF LUEBBERS
Witnessed By	SETH EVENSON

<<< Fold Here >>>

All interpretations are opinions based on inferences from electrical or other measurements and we cannot and do not guarantee the accuracy or correctness of any interpretation, and we shall not, except in the case of gross or willful negligence on our part, be liable or responsible for any loss, costs, damages, or expenses incurred or sustained by anyone resulting from any interpretation made by any of our officers, agents or employees. These interpretations are also subject to our general terms and conditions set out in our current Price Schedule.

Comments

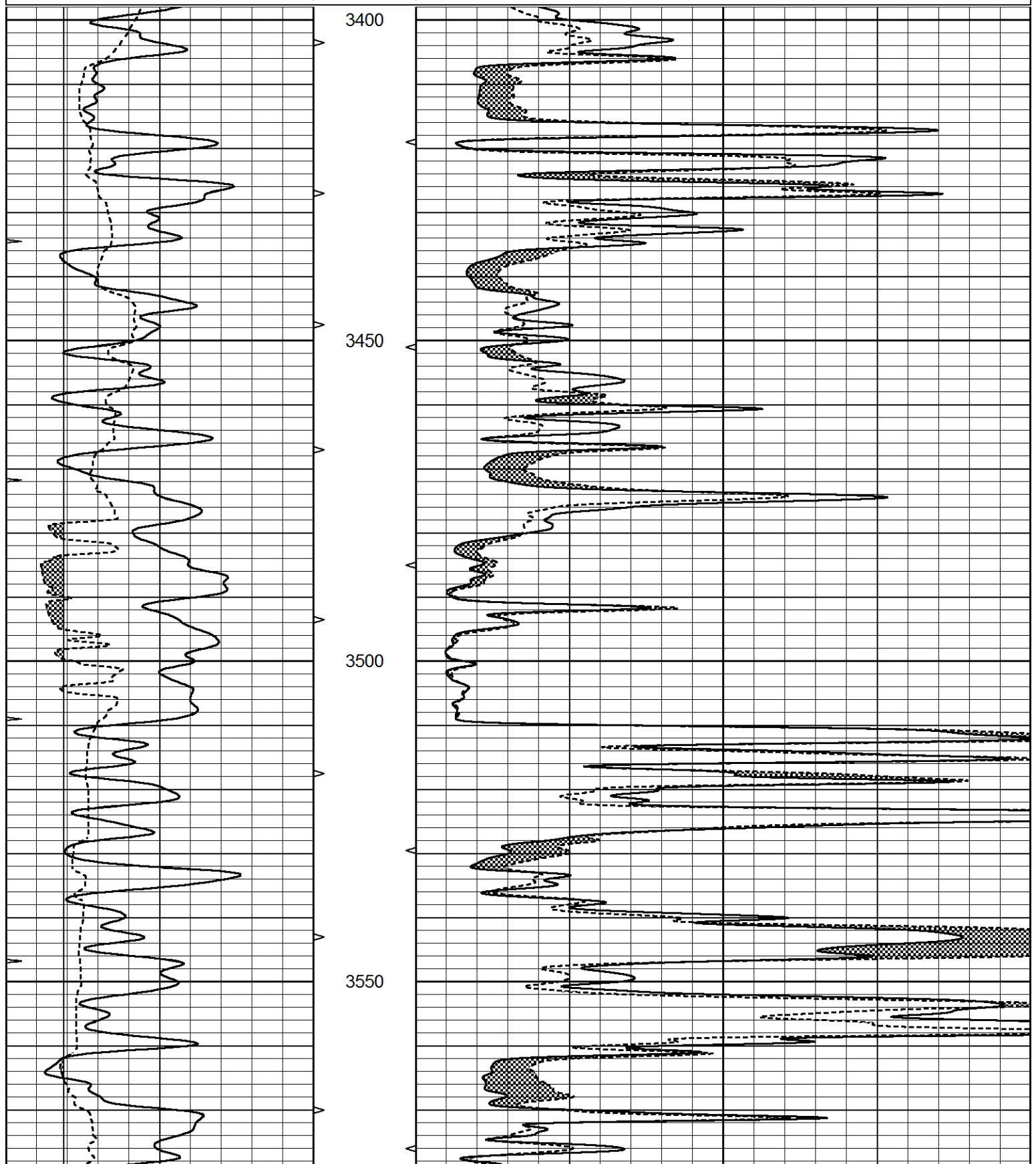
THANK YOU FOR USING ELI WIRELINE, HAYS, KS. (785) 628-6395  
 DIRECTIONS:  
 OAKLEY, KS., 9S. ON HWY 83 TO "QUAIL RD.", 7W. TO "RD. 370", 1 S. TO "PLAINS RD.", 2W. TO "RD. 350", S. TO "INDIAN RD.", 4W. TO TANK BATTERY, 2N. ON TRAIL

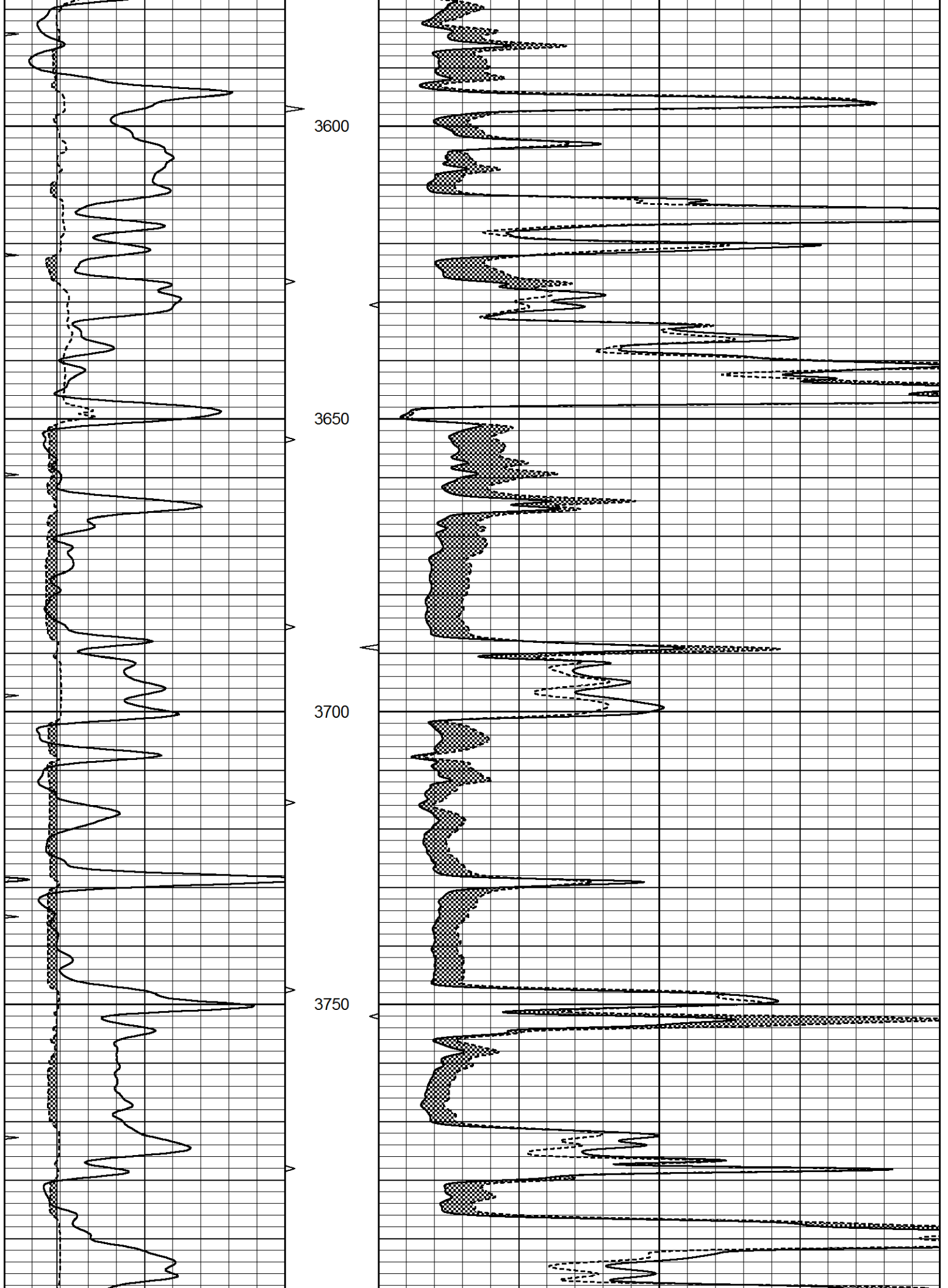


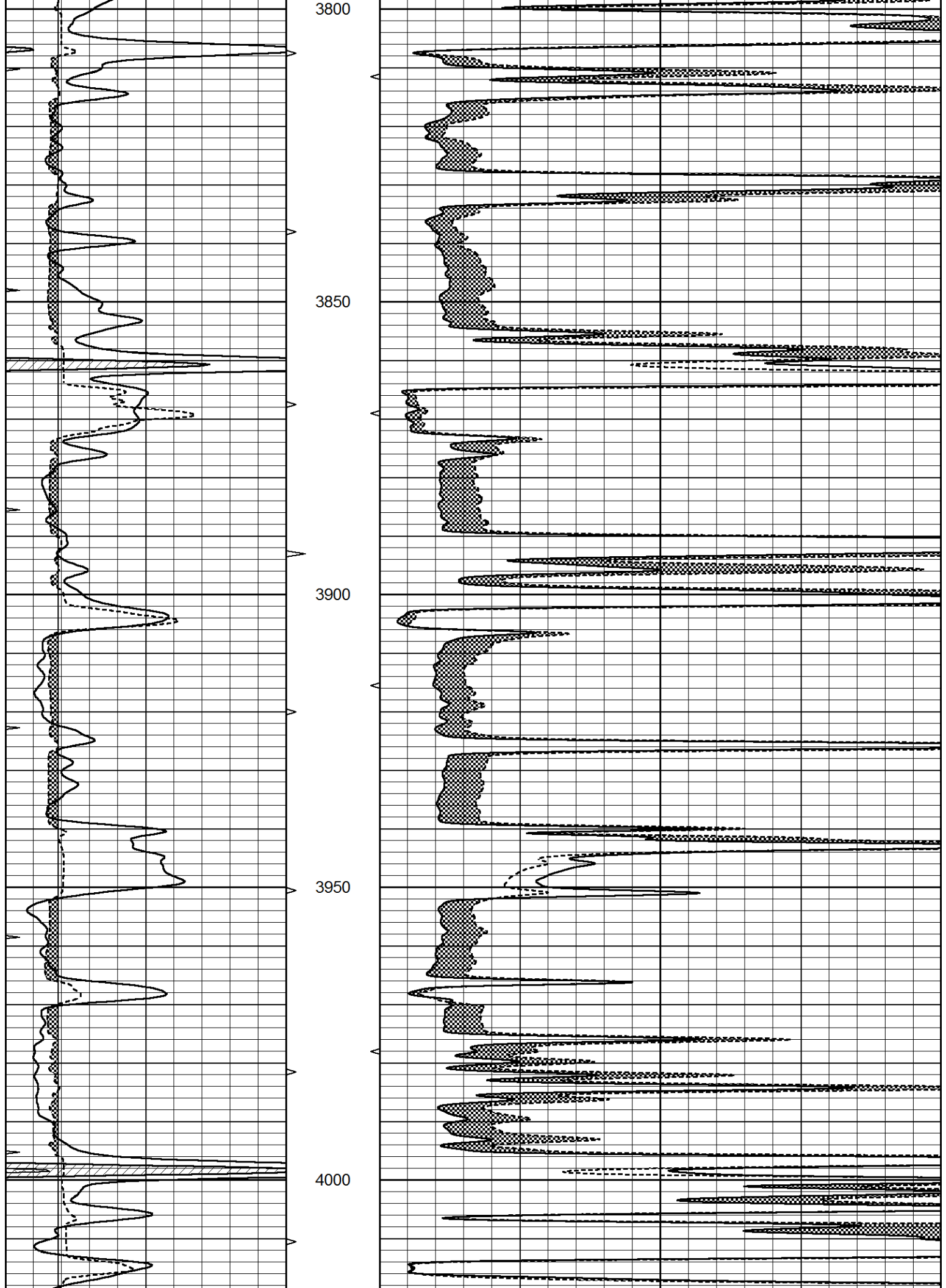
MAIN SECTION

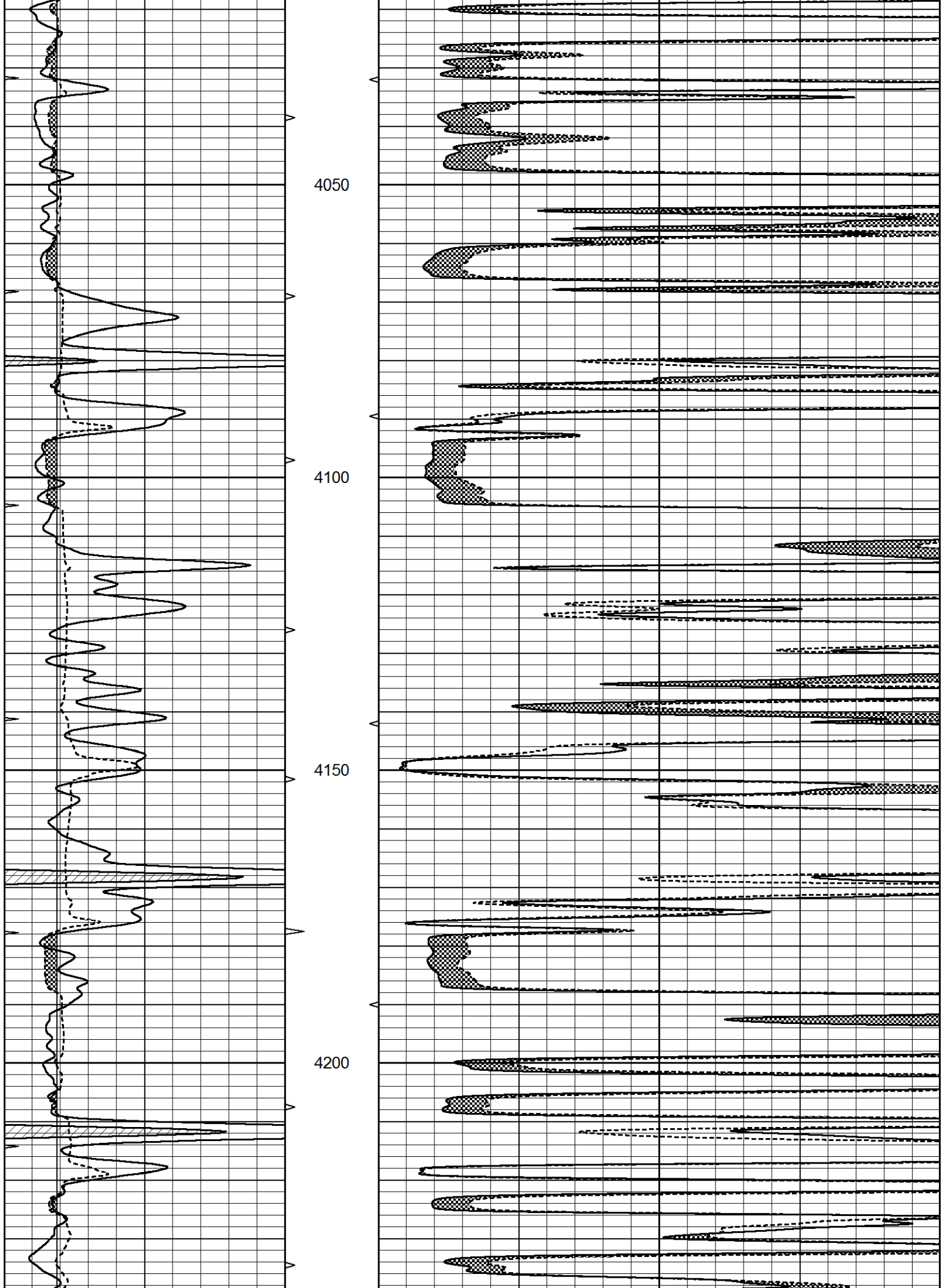
Database File 6711pe.db  
 Dataset Pathname pass6.3  
 Presentation Format \_micro  
 Dataset Creation Tue Jul 12 16:48:10 2022  
 Charted by Depth in Feet scaled 1:240

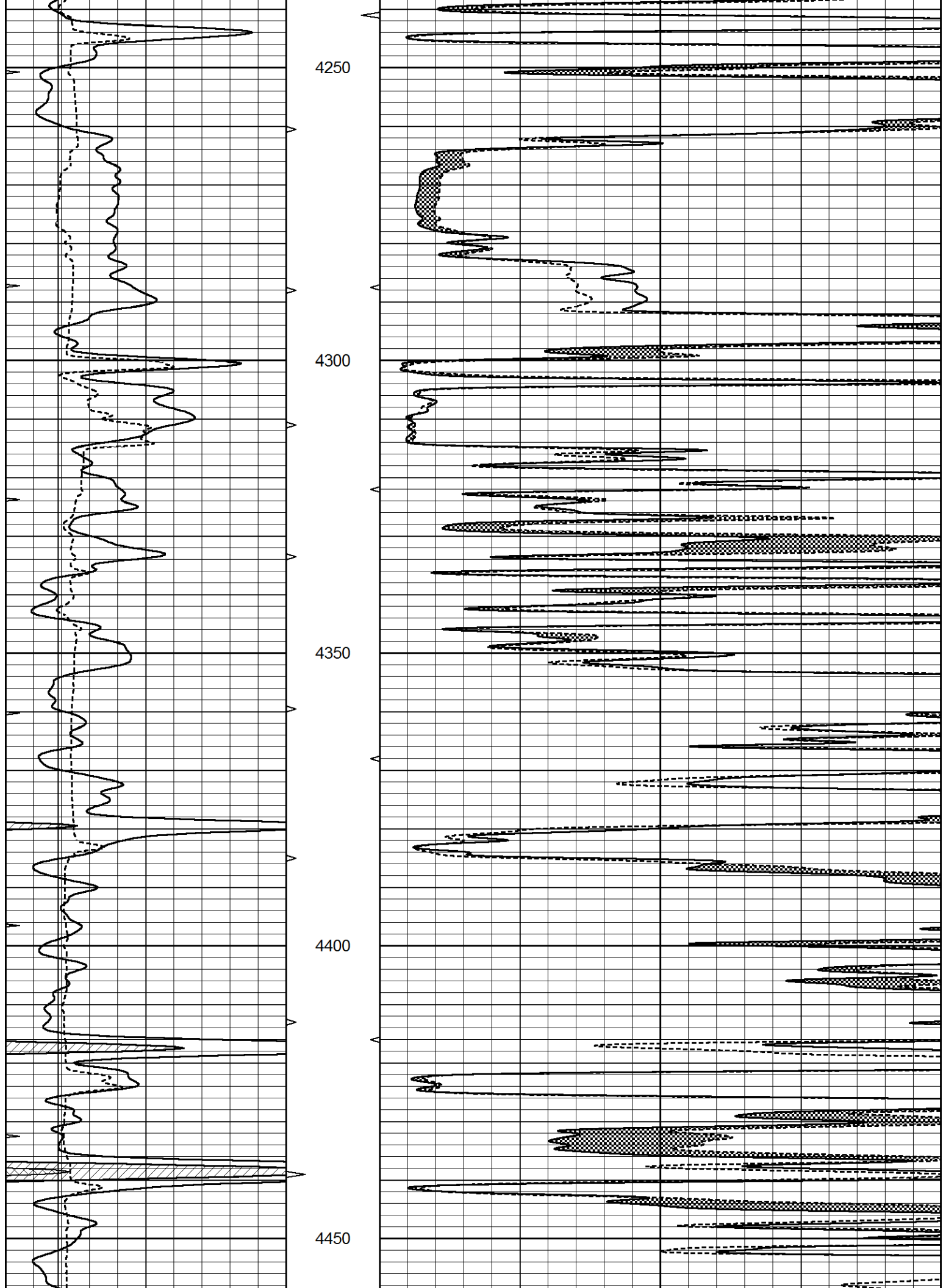
0	GAMMA RAY (GAPI)	150	ABHV	0	MEL1.5 (Ohm-m)	40
6	CALIPER (in)	16	10 (ft3)	0	MEL2.0 (Ohm-m)	40
0	MINMK	20	TBHV			
			0 (ft3)	10		

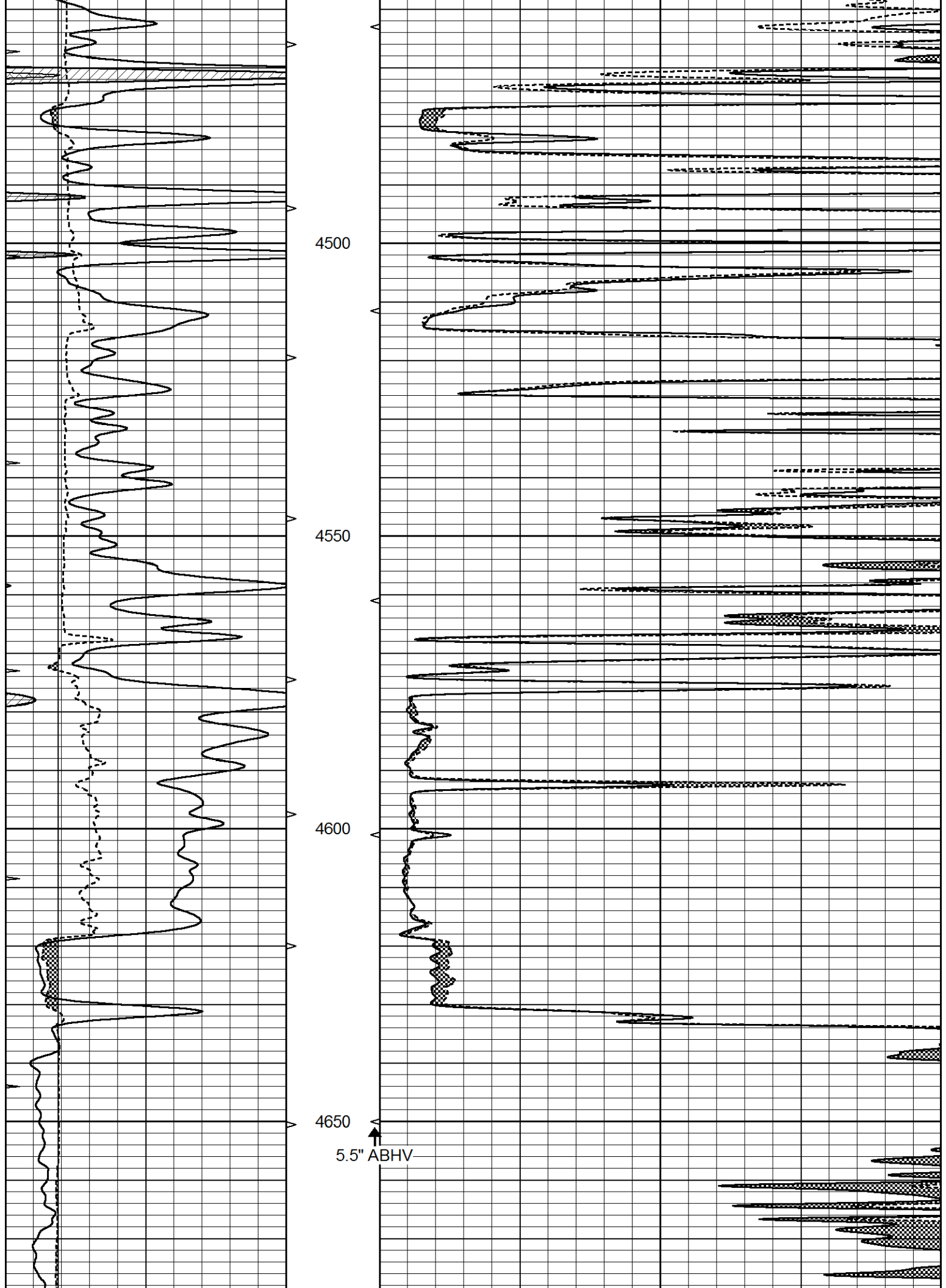


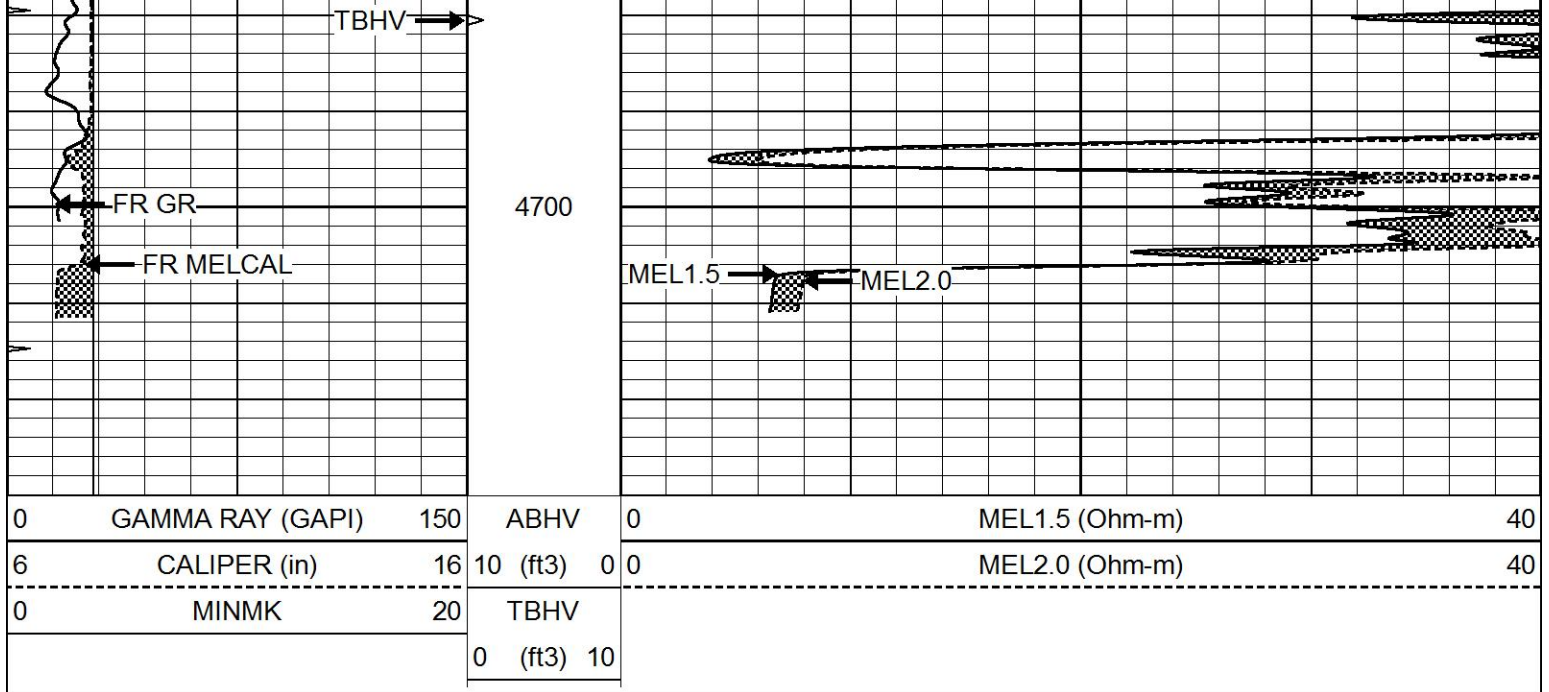








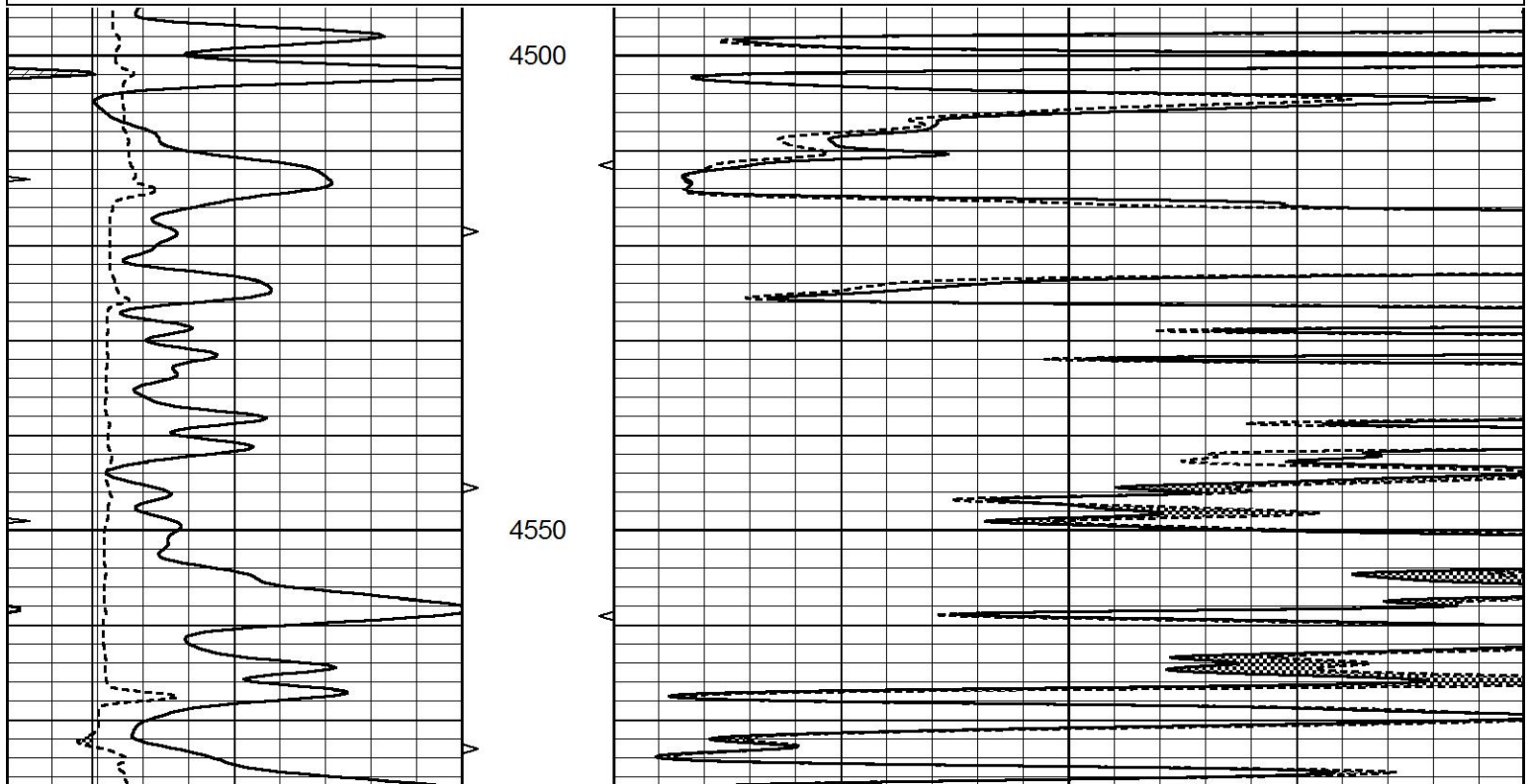


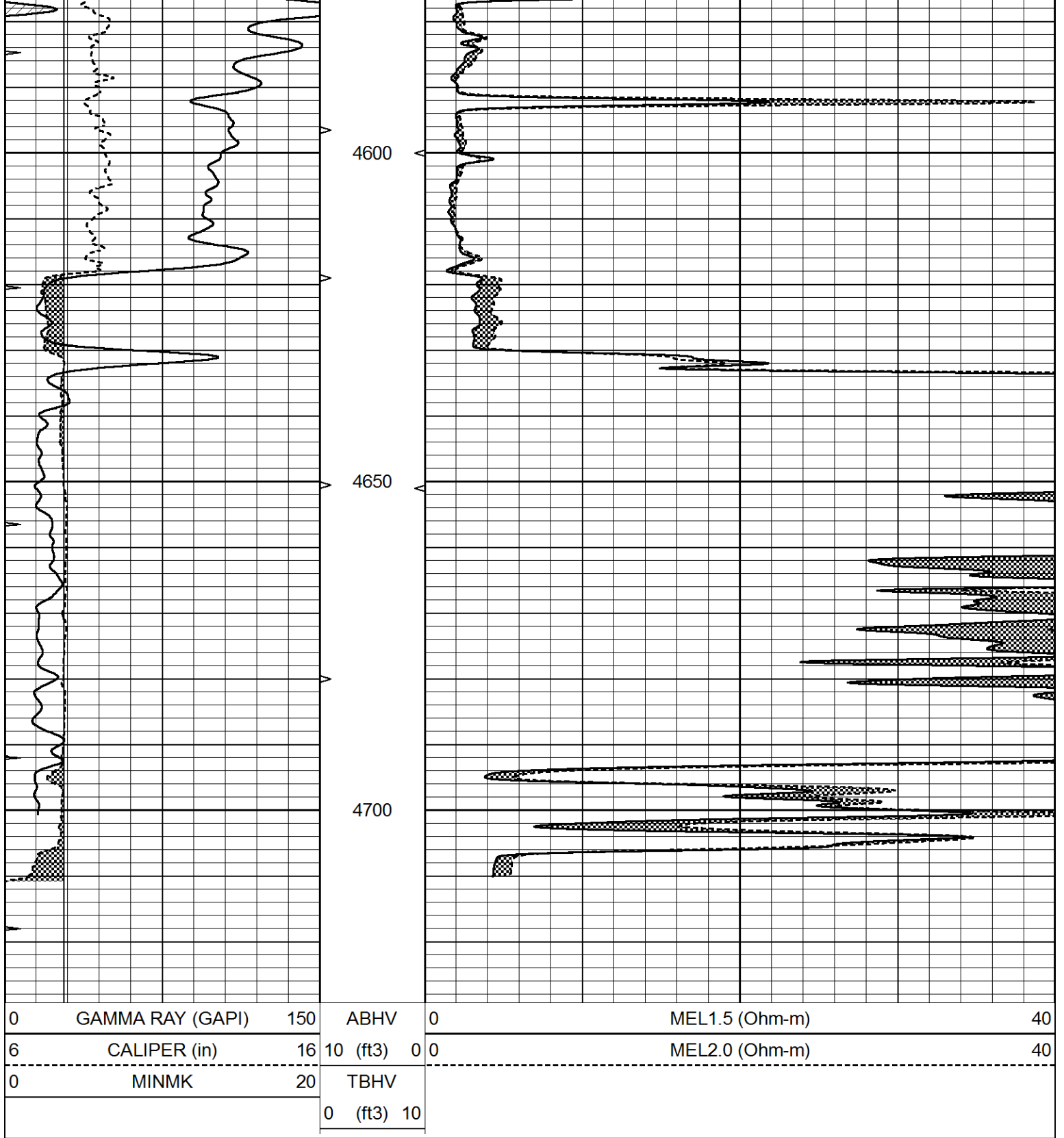


# REPEAT SECTION

Database File 6711pe.db  
 Dataset Pathname pass5.1  
 Presentation Format \_micro  
 Dataset Creation Tue Jul 12 16:41:38 2022  
 Charted by Depth in Feet scaled 1:240

0	GAMMA RAY (GAPI)	150	ABHV	0	MEL1.5 (Ohm-m)	40
6	CALIPER (in)	16	10 (ft3) 0	0	MEL2.0 (Ohm-m)	40
0	MINMK	20	TBHV			
			0 (ft3) 10			





### Calibration Report

Database File     6711pe.db  
 Dataset Pathname   pass6.3  
 Dataset Creation    Tue Jul 12 16:48:10 2022

### MICRO Calibration Report

Serial Number:     MICRO6  
 Tool Model:        PROBE  
 Performed:        Tue Jul 12 07:05:01 2022

Caliper Calibration:     Gain=4.571     Offset=2.286

References	Low Cal 8.000	High Cal 16.000
Readings	1.250	3.000
1.5" Calibration:	Gain=46.000	Offset=0.000
References	Low Cal 0.000	High Cal 20.000
Readings	0.002	0.624
2" Calibration:	Gain=54.000	Offset=0.000
References	Low Cal 0.000	High Cal 20.000
Readings	0.006	0.468
Gamma Ray Calibration Report		
Serial Number:	GR5	
Tool Model:	OPEN	
Performed:	Sun Jul 03 15:33:05 2022	
Calibrator Value:	1.0	GAPI
Background Reading:	0.0	cps
Calibrator Reading:	1.0	cps
Sensitivity:	0.5600	GAPI/cps