



MICRO LOG

Company PALOMINO PETROLEUM
 Well RYAN C-3
 Field STUTZ EAST
 County NESS
 State KS

Company PALOMINO PETROLEUM
 Well RYAN C-3
 Field STUTZ EAST
 County NESS
 State KS

Location: API #: 15 135 26186
 955' FNL & 960' FWL
 Permanent Datum SEC 16 TWP 17S RGE 25W
 Log Measured From Ground Level Elevation 2491
 Drilling Measured From KB 8' AGL
 KB
 Other Services
 ML
 CDNL
 Elevation
 K.B. 2499'
 D.F. 2497'
 G.L. 2491'

| | |
|------------------------------|-----------------|
| Date | 9/5/22 |
| Run Number | TWO |
| Depth Driller | 4530 |
| Depth Logger | 4528 |
| Bottom Logged Interval | 4526 |
| Top Log Interval | 3400 |
| Casing Driller | 8 5/8" @ 222 |
| Casing Logger | 222 |
| Bit Size | 7 7/8" |
| Type Fluid in Hole | Chemical |
| Density / Viscosity | 9.4/57 |
| pH / Fluid Loss | 10.0/8.0 |
| Source of Sample | Pit |
| Rm @ Meas. Temp | 1.1@80degf |
| Rmf @ Meas. Temp | .83@80degf |
| Rmc @ Meas. Temp | 1.32@80degf |
| Source of Rmf / Rmc | Calculated |
| Rm @ BHT | 68@129degf |
| Time Circulation Stopped | 9:30 P.M. |
| Time Logger on Bottom | 11:00 PM |
| Maximum Recorded Temperature | 129degf |
| Equipment Number | T605 |
| Location | Hays, KS |
| Recorded By | GUS PFANENSTIEL |
| Witnessed By | KEATON JONES |

<<< Fold Here >>>

All interpretations are opinions based on inferences from electrical or other measurements and we cannot and do not guarantee the accuracy or correctness of any interpretation, and we shall not, except in the case of gross or willful negligence on our part, be liable or responsible for any loss, costs, damages, or expenses incurred or sustained by anyone resulting from any interpretation made by any of our officers, agents or employees. These interpretations are also subject to our general terms and conditions set out in our current Price Schedule.

Comments

ARNOLD 3 WEST TO H RD. SOUTH TO 220
 1/8 EAST, SOUTH INTO.
 Thank You for using Gemini Wireline LLC
 785-625-1182

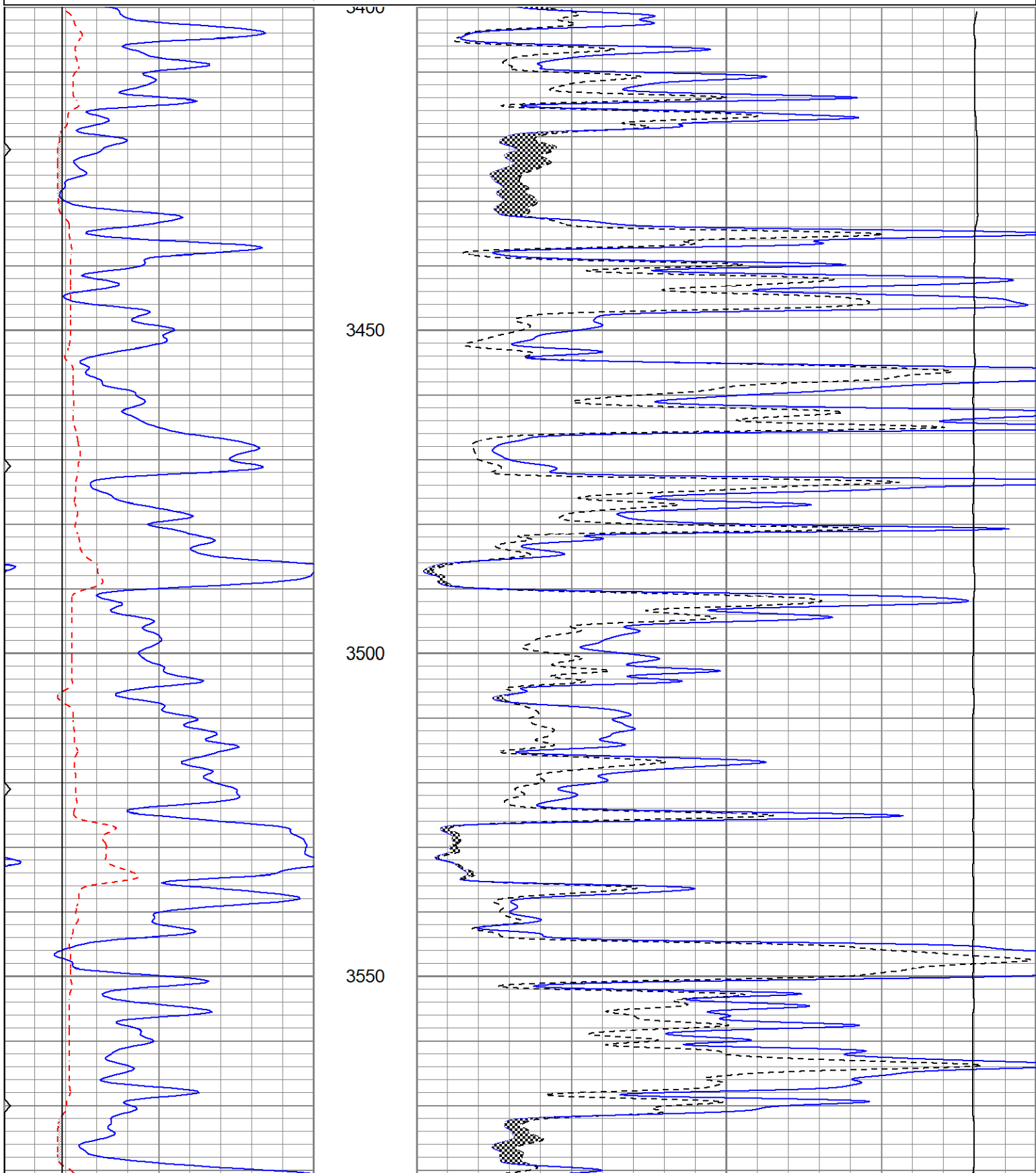


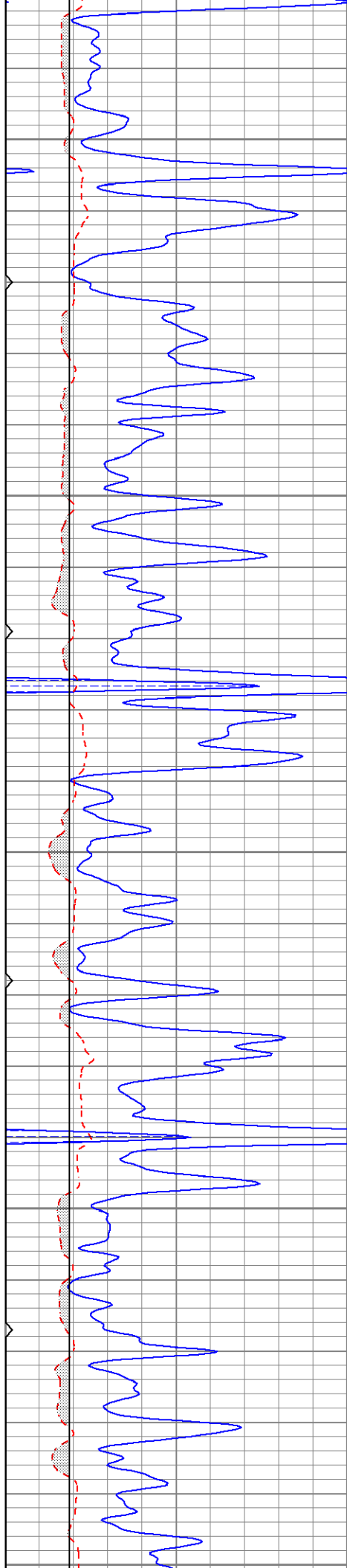
MAIN PASS

Database File ppryanc-3oh.db
 Dataset Pathname pass6.1
 Presentation Format kml
 Dataset Creation Tue Sep 06 01:40:57 2022
 Charted by Depth in Feet scaled 1:240

| | | |
|---|-------------|-----|
| 0 | GR (GAPI) | 150 |
| 6 | MCAL (in) | 16 |
| 6 | BOREID (in) | 16 |
| 0 | MINMK | 50 |

| | | |
|-------|---------------|----|
| 0 | MN 2" (Ohm-m) | 20 |
| 0 | MI 1" (Ohm-m) | 20 |
| 10000 | LTEN (lb) | 0 |





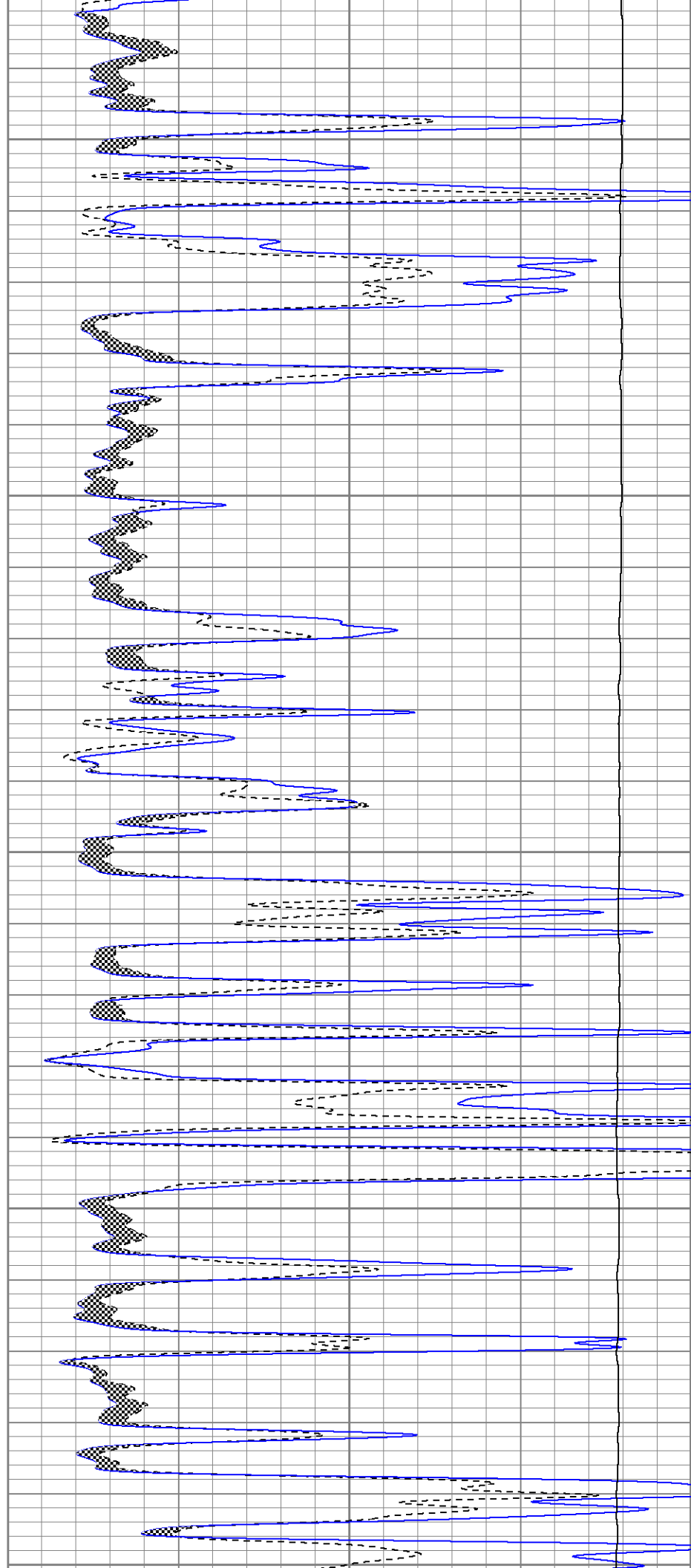
3600

3650

3700

3750

3800





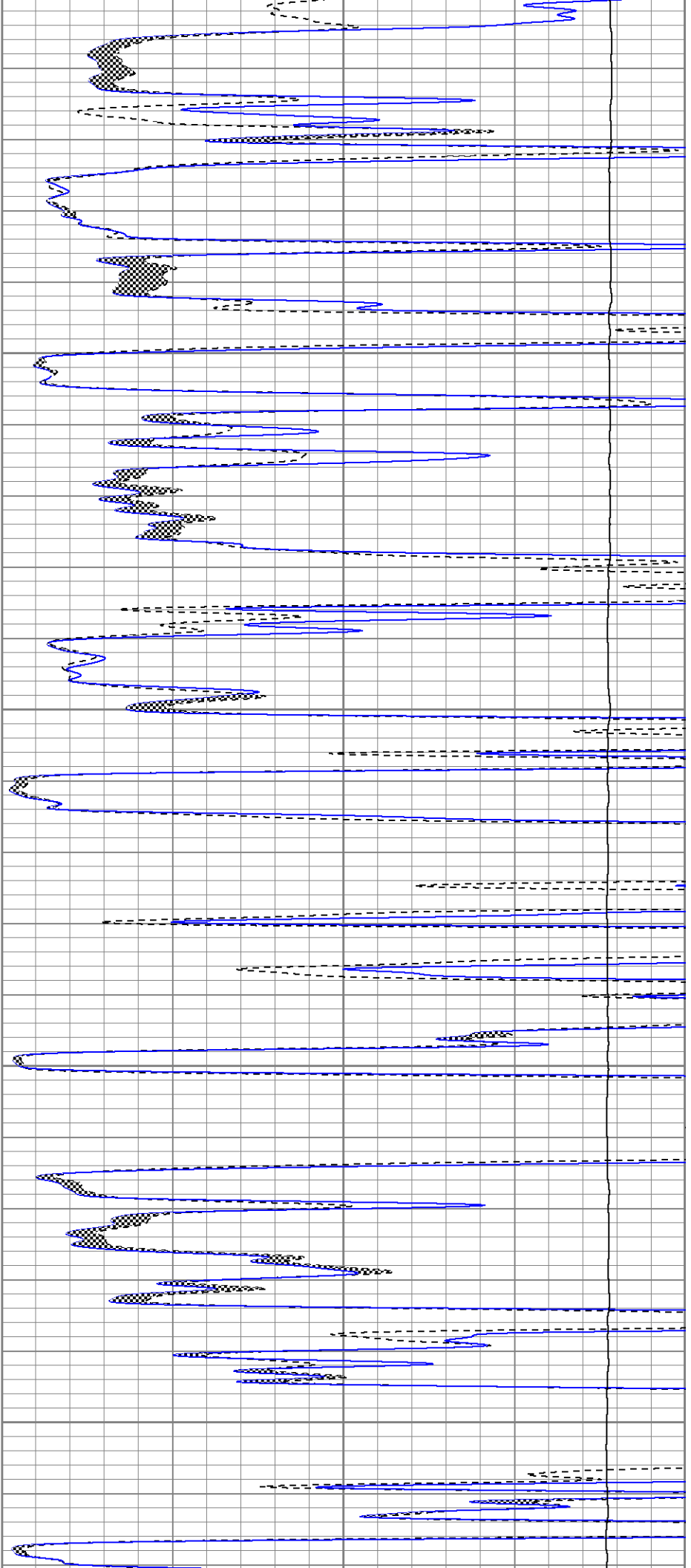
3800

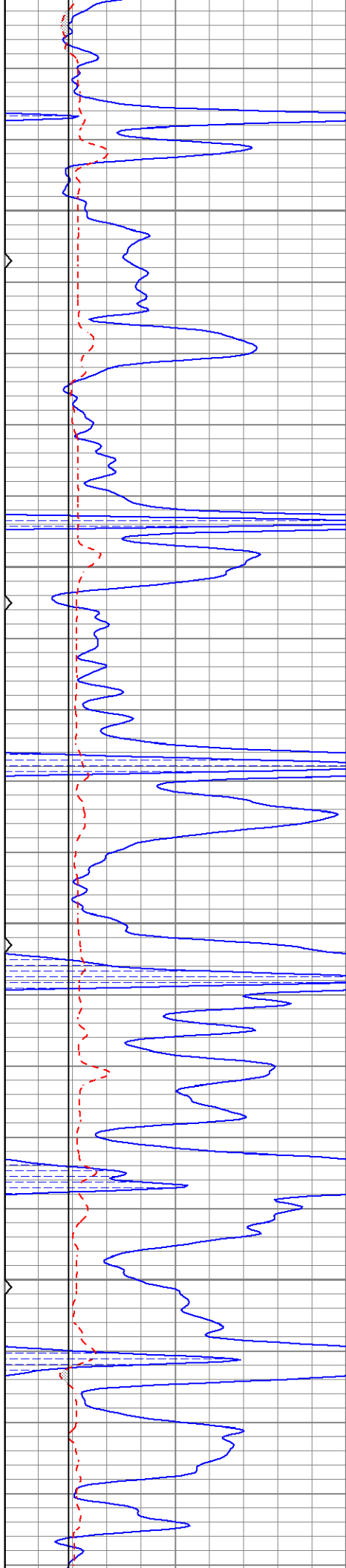
3850

3900

3950

4000



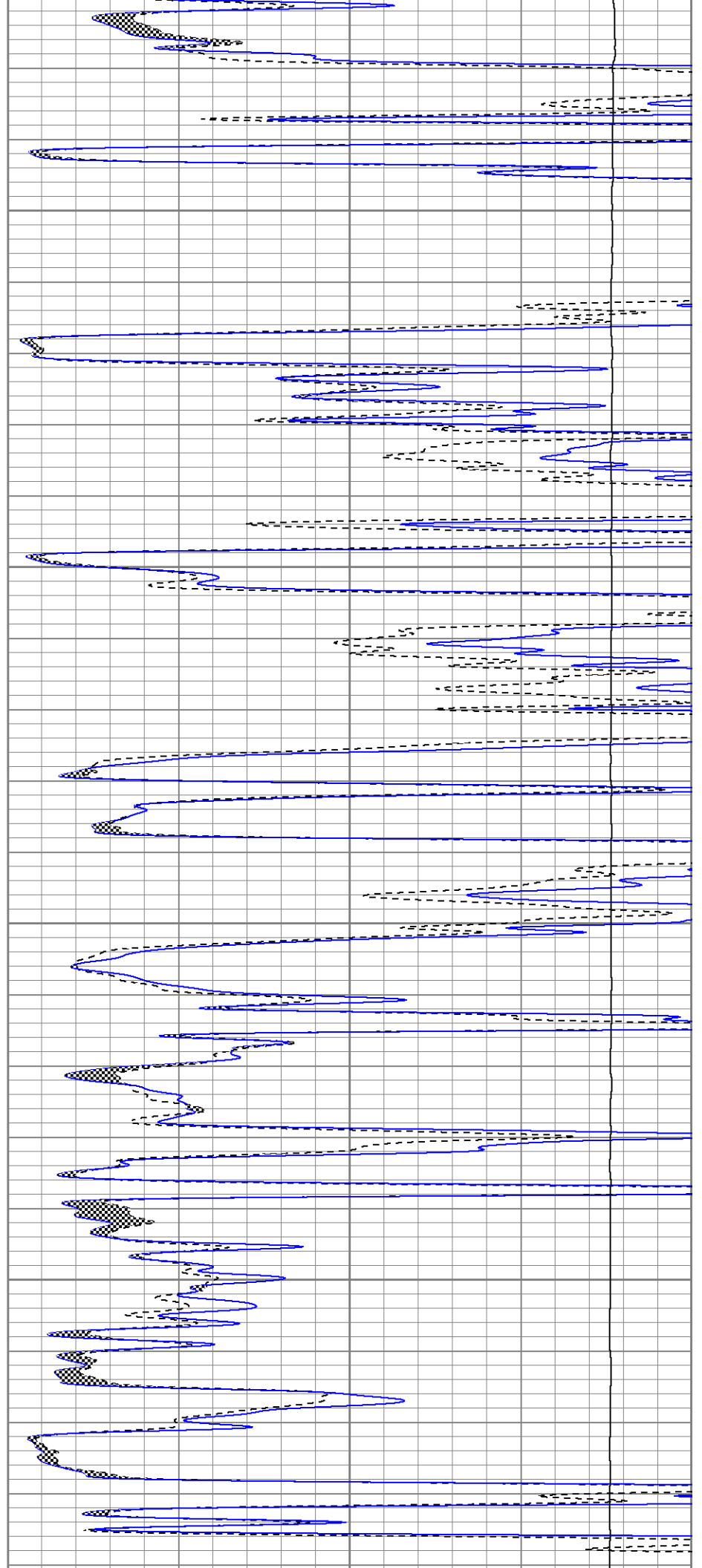


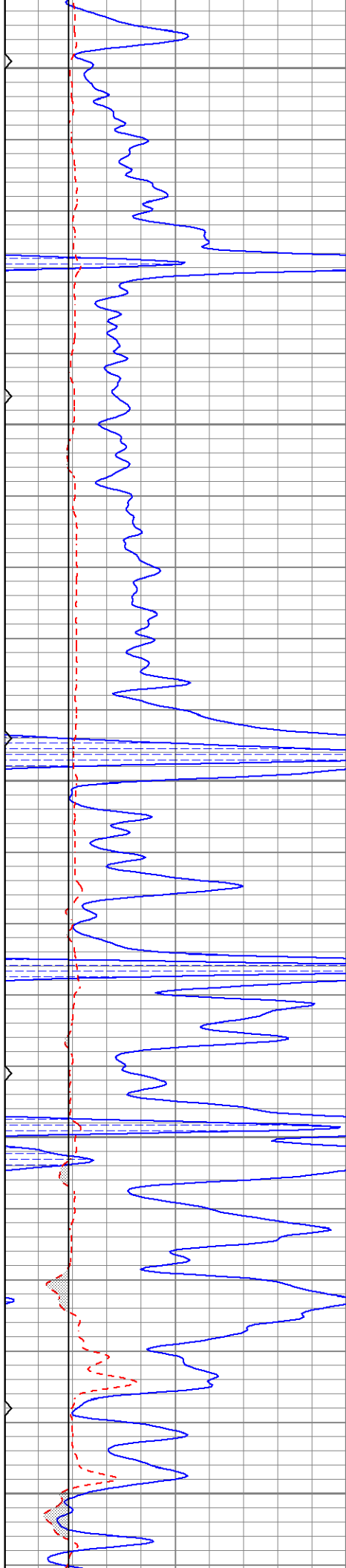
4050

4100

4150

4200





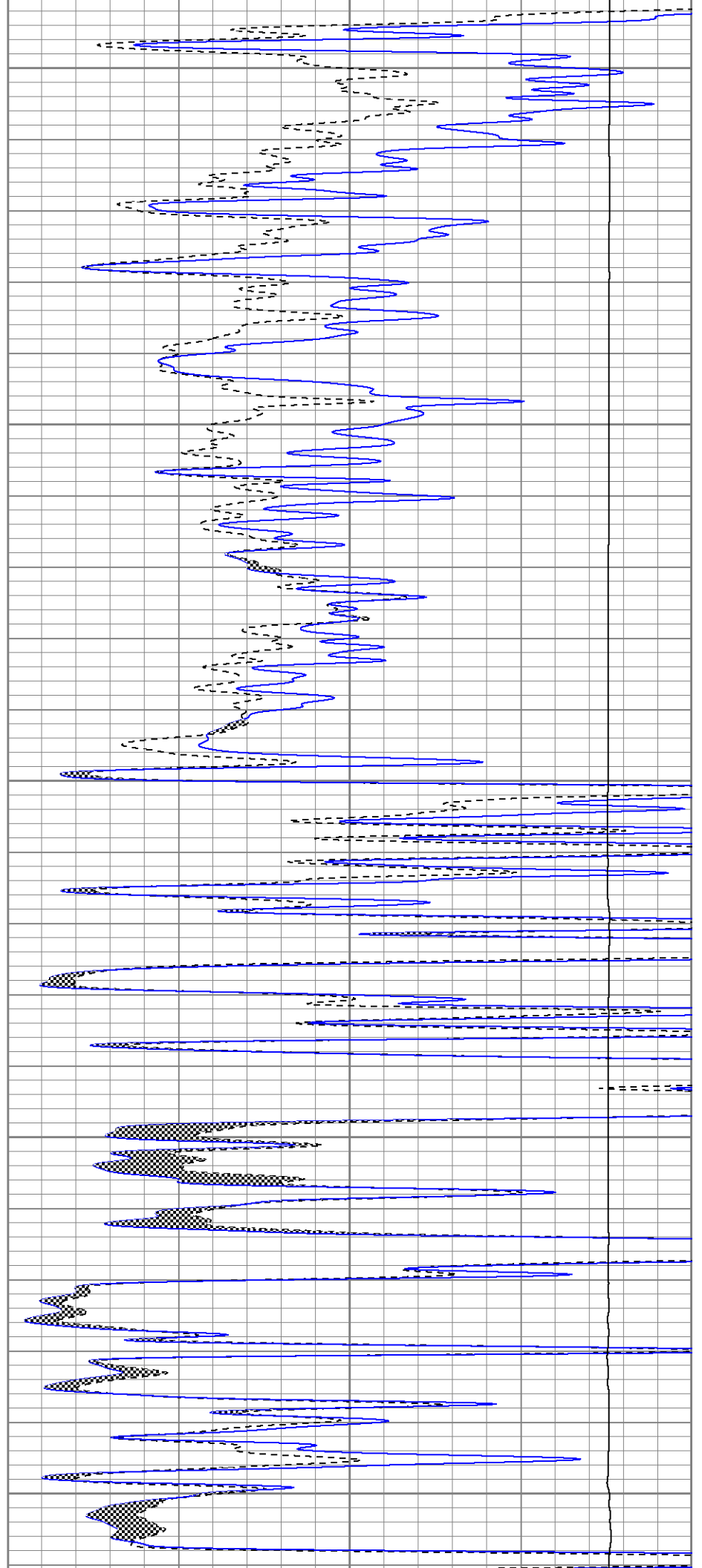
4250

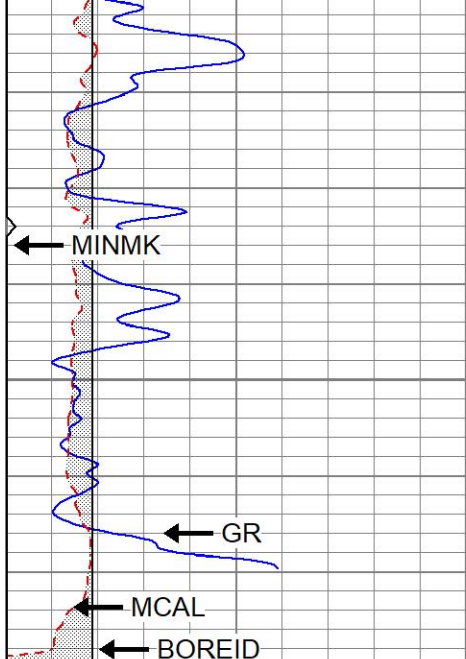
4300

4350

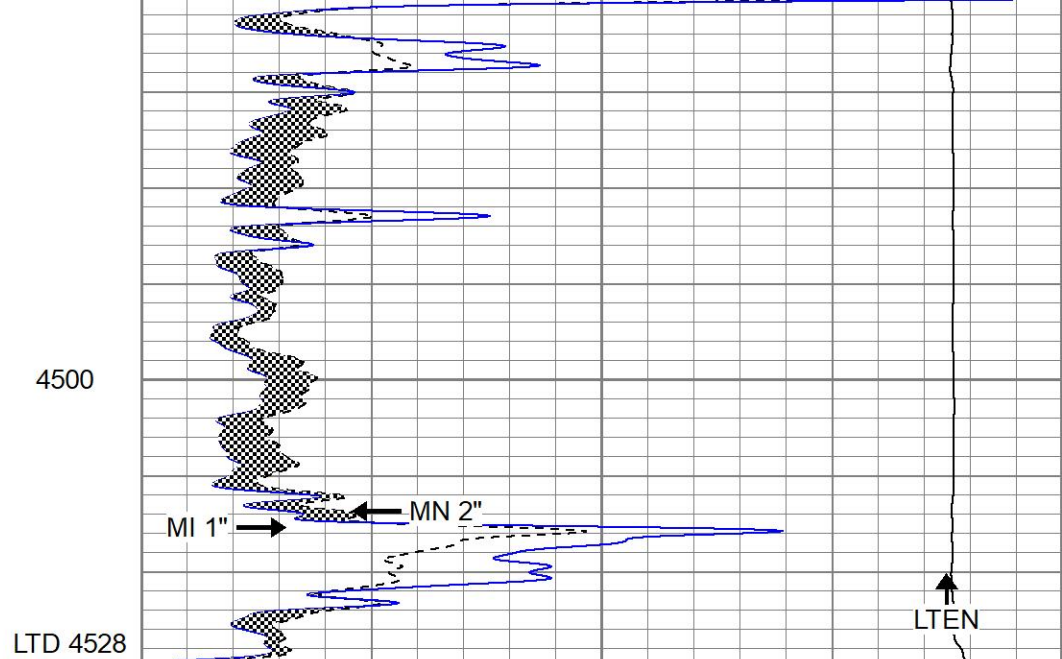
4400

4450





| | | |
|---|-------------|-----|
| 0 | GR (GAPI) | 150 |
| 6 | MCAL (in) | 16 |
| 6 | BOREID (in) | 16 |
| 0 | MINMK | 50 |



| | | |
|-------|---------------|----|
| 0 | MN 2" (Ohm-m) | 20 |
| 0 | MI 1" (Ohm-m) | 20 |
| 10000 | LTEN (lb) | 0 |

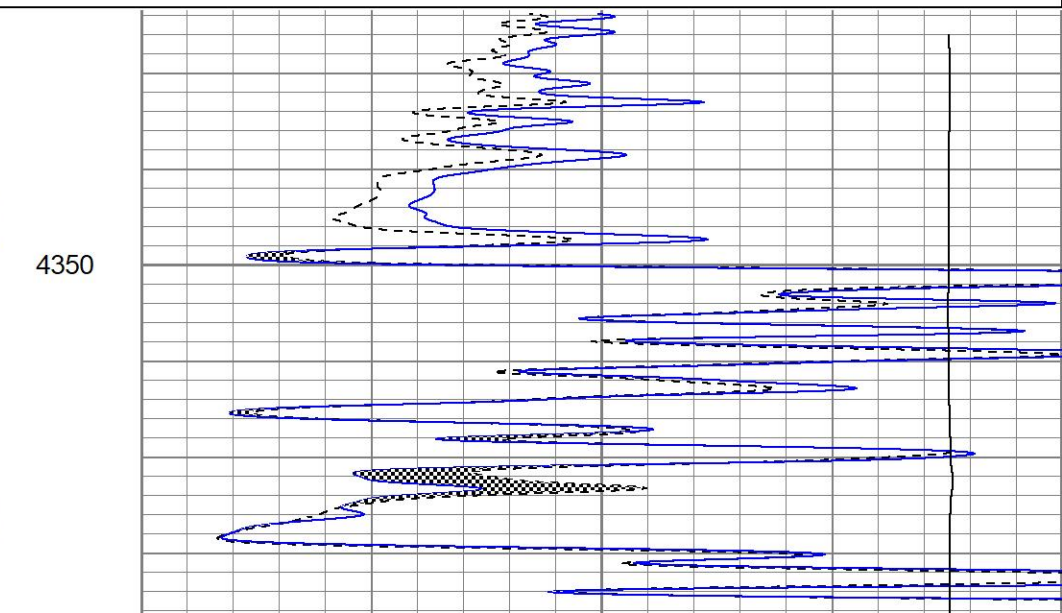
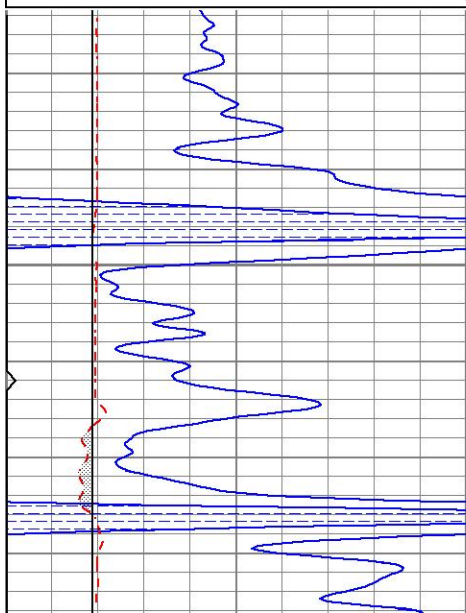


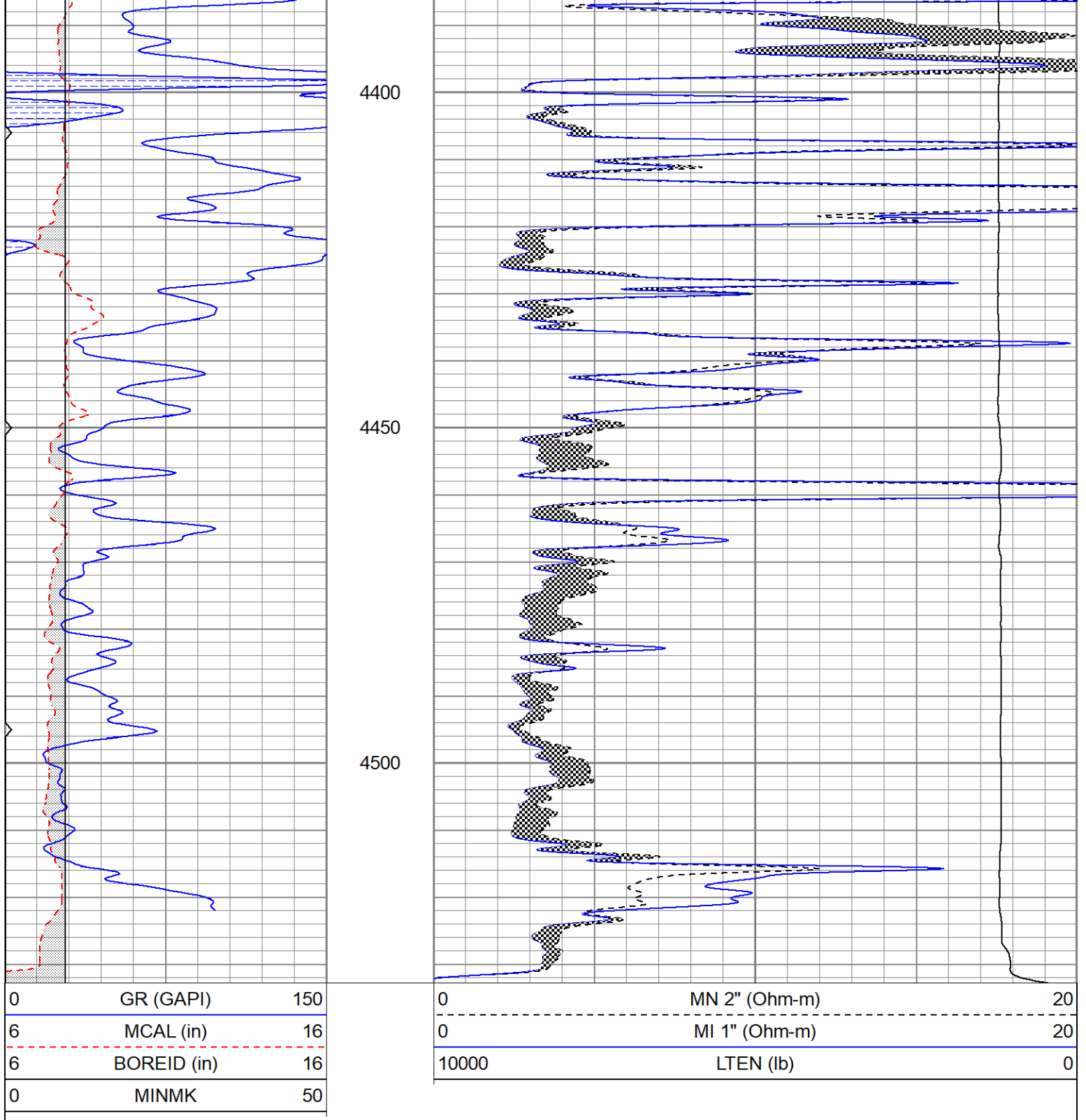
REPEAT SECTION

Database File ppryanc-3oh.db
 Dataset Pathname pass4.1
 Presentation Format kml
 Dataset Creation Tue Sep 06 01:37:59 2022
 Charted by Depth in Feet scaled 1:240

| | | |
|---|-------------|-----|
| 0 | GR (GAPI) | 150 |
| 6 | MCAL (in) | 16 |
| 6 | BOREID (in) | 16 |
| 0 | MINMK | 50 |

| | | |
|-------|---------------|----|
| 0 | MN 2" (Ohm-m) | 20 |
| 0 | MI 1" (Ohm-m) | 20 |
| 10000 | LTEN (lb) | 0 |





Calibration Report

Database File ppryanc-3oh.db
 Dataset Pathname pass4.1
 Dataset Creation Tue Sep 06 01:37:59 2022

Microlog Calibration Report

Serial-Model: 012-Pengo
 Performed: Sat Jun 4 18:25:33 2022

Readings

Zero Cal

References

Zero Cal

Results

m b

| | | | | | | | | |
|---------|--------|--------|---|--------|---------|-------|----------|---------|
| Normal | 0.0056 | 0.1002 | V | 0.0000 | 10.0000 | Ohm-m | 105.7780 | -0.5940 |
| Inverse | 0.0030 | 0.1296 | V | 0.0000 | 10.0000 | Ohm-m | 78.9590 | -0.2347 |
| Caliper | 2.7578 | 4.6384 | V | 7.9000 | 14.0000 | in | 3.2437 | -0.7453 |

Gamma Ray Calibration Report

| | | |
|---------------------|-------------------------|----------|
| Serial Number: | 2000 | |
| Tool Model: | P2000 | |
| Performed: | Sun May 6 10:04:13 2018 | |
| Calibrator Value: | 1.0 | GAPI |
| Background Reading: | 0.0 | cps |
| Calibrator Reading: | 1.0 | cps |
| Sensitivity: | 0.8500 | GAPI/cps |