



SONIC LOG

Company GRAND MESA OPERATING COMPANY
 Well YORK #1-4
 Field UNNAMED
 County LANE
 State KANSAS

Company GRAND MESA OPERATING COMPANY
 Well YORK #1-4
 Field UNNAMED
 County LANE State KANSAS

Location: API #: 15-101-22673-0000
 577' FSL & 2489' FEL
 NW - SW - SW - SE
 SEC 4 TWP 16S RGE 29W
 Permanent Datum GROUND LEVEL Elevation 2619
 Log Measured From KELLY BUSHING 11' A.G.L.
 Drilling Measured From KELLY BUSHING
 Other Services CDL/CNL/PE DIL/MEL
 Elevation K.B. 2630 D.F. 2628 G.L. 2619

Date	9/29/22
Run Number	ONE
Depth Driller	4440
Depth Logger	4441
Bottom Logged Interval	4433
Top Log Interval	200
Casing Driller	8 5/8" @ 227
Casing Logger	227
Bit Size	7 7/8
Type Fluid in Hole	CHEMICAL MUD
Density / Viscosity	9.2/50
PH / Fluid Loss	10.5/7.2
Source of Sample	FLOWLINE
Rm @ Meas. Temp	1.50 @ 78F
Rmt @ Meas. Temp	1.13 @ 78F
Rmc @ Meas. Temp	1.80 @ 78F
Source of Rmf / Rmc	MEASUREMENT
Rm @ BHT	.975 @ 120F
Time Circulation Stopped	5 HOURS
Time Logger on Bottom	2:00 A.M.
Maximum Recorded Temperature	120F
Equipment Number	3802
Location	HAYS, KANSAS
Recorded By	COLE ROBBEN
Witnessed By	GARET DINKEL

<<< Fold Here >>>

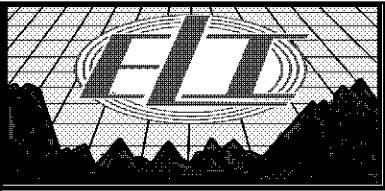
All interpretations are opinions based on inferences from electrical or other measurements and we cannot and do not guarantee the accuracy or correctness of any interpretation, and we shall not, except in the case of gross or willful negligence on our part, be liable or responsible for any loss, costs, damages, or expenses incurred or sustained by anyone resulting from any interpretation made by any of our officers, agents or employees. These interpretations are also subject to our general terms and conditions set out in our current Price Schedule.

Comments

THANK YOU FOR USING ELI WIRELINE SERVICES, HAYS, KS. (785) 628-6395

DIRECTIONS:

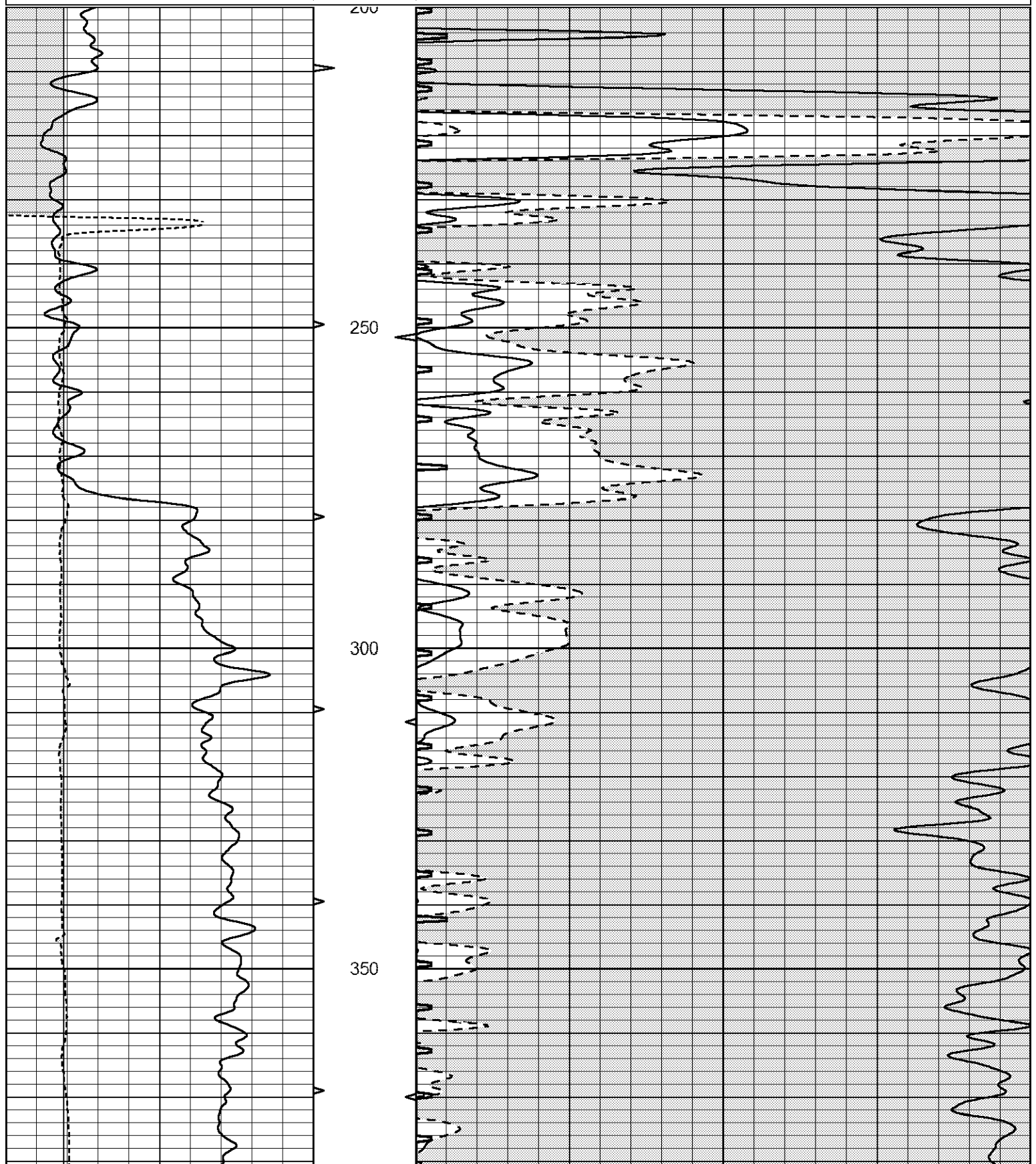
FROM HIGHWAY 4/23 INTERSECTION NORTH 6 MILES TO LANE GOVE RD., 2 MILES WEST TO N HICKOCK RD., SOUTH 3/4 MILES AND WEST INTO, FOLLOW LEASE ROAD NORTHEAST

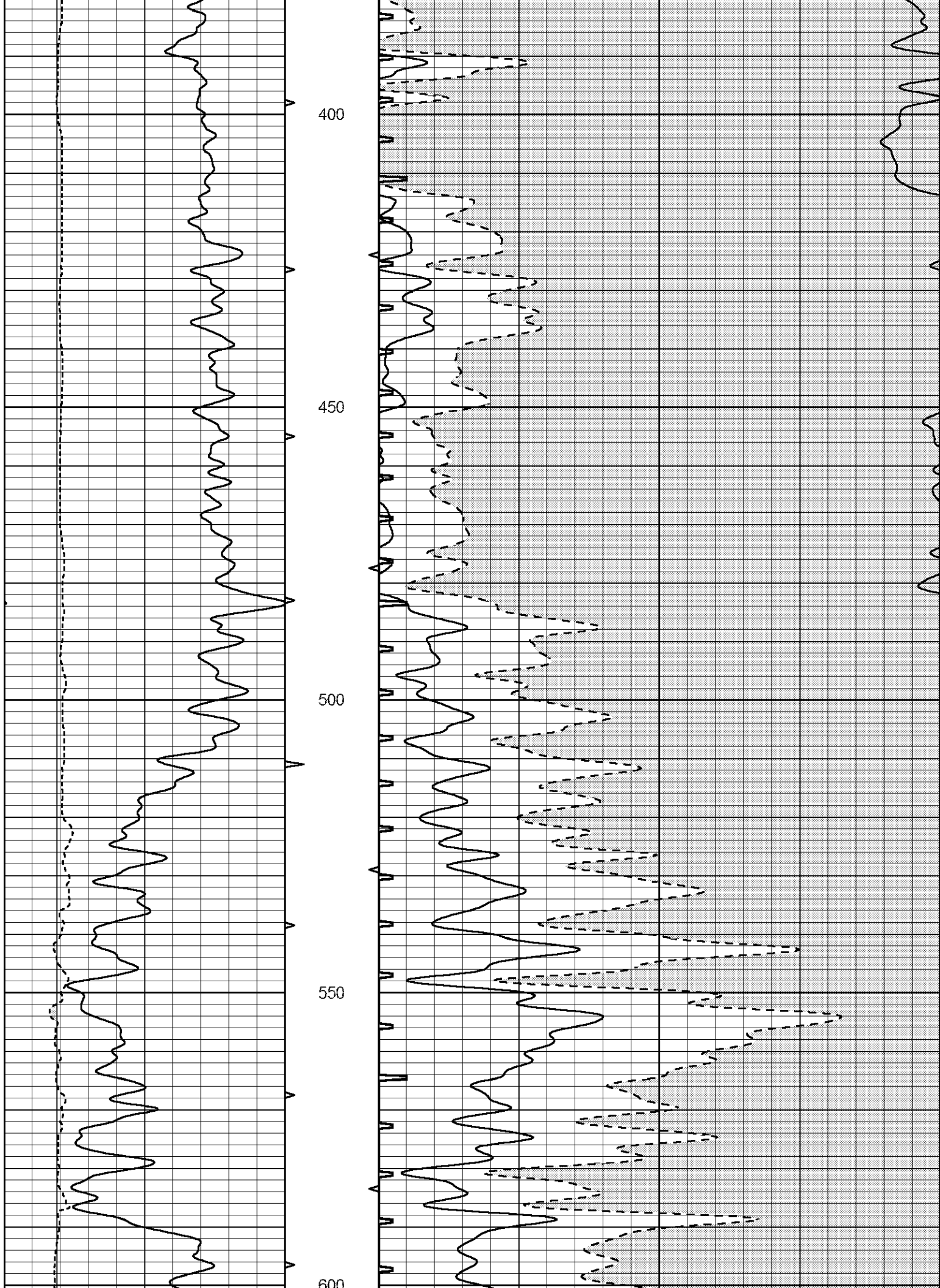


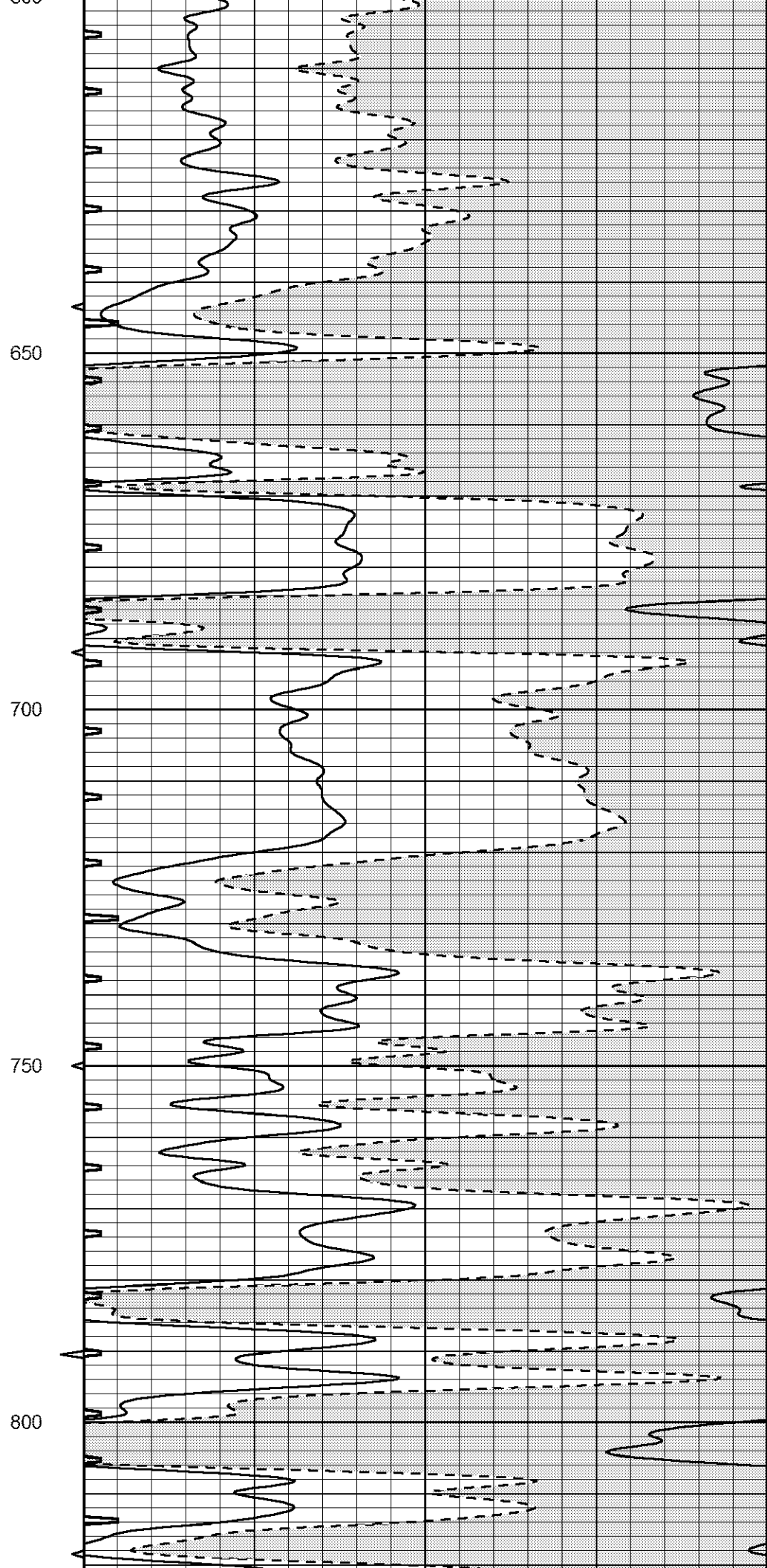
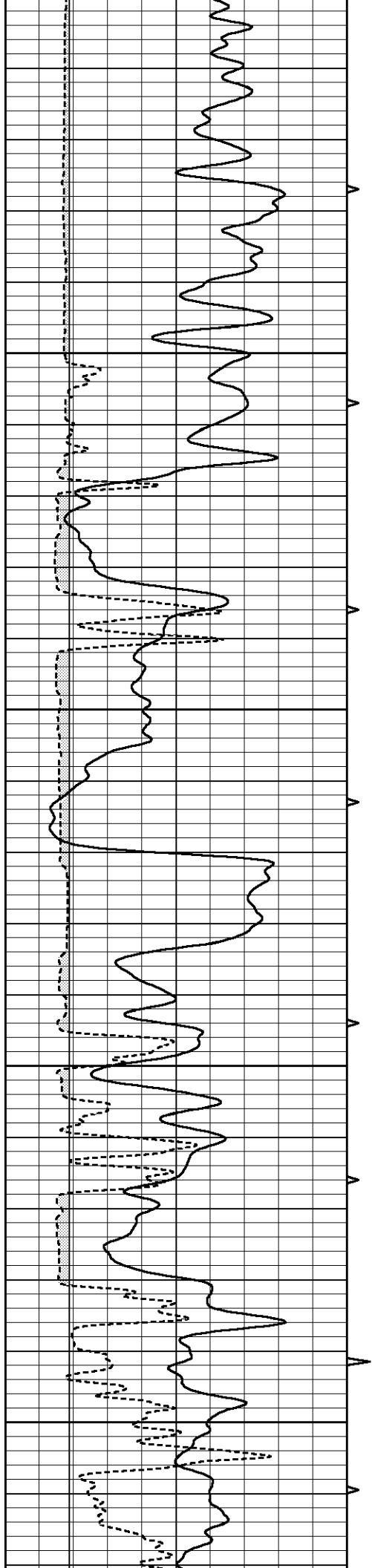
MAIN SECTION

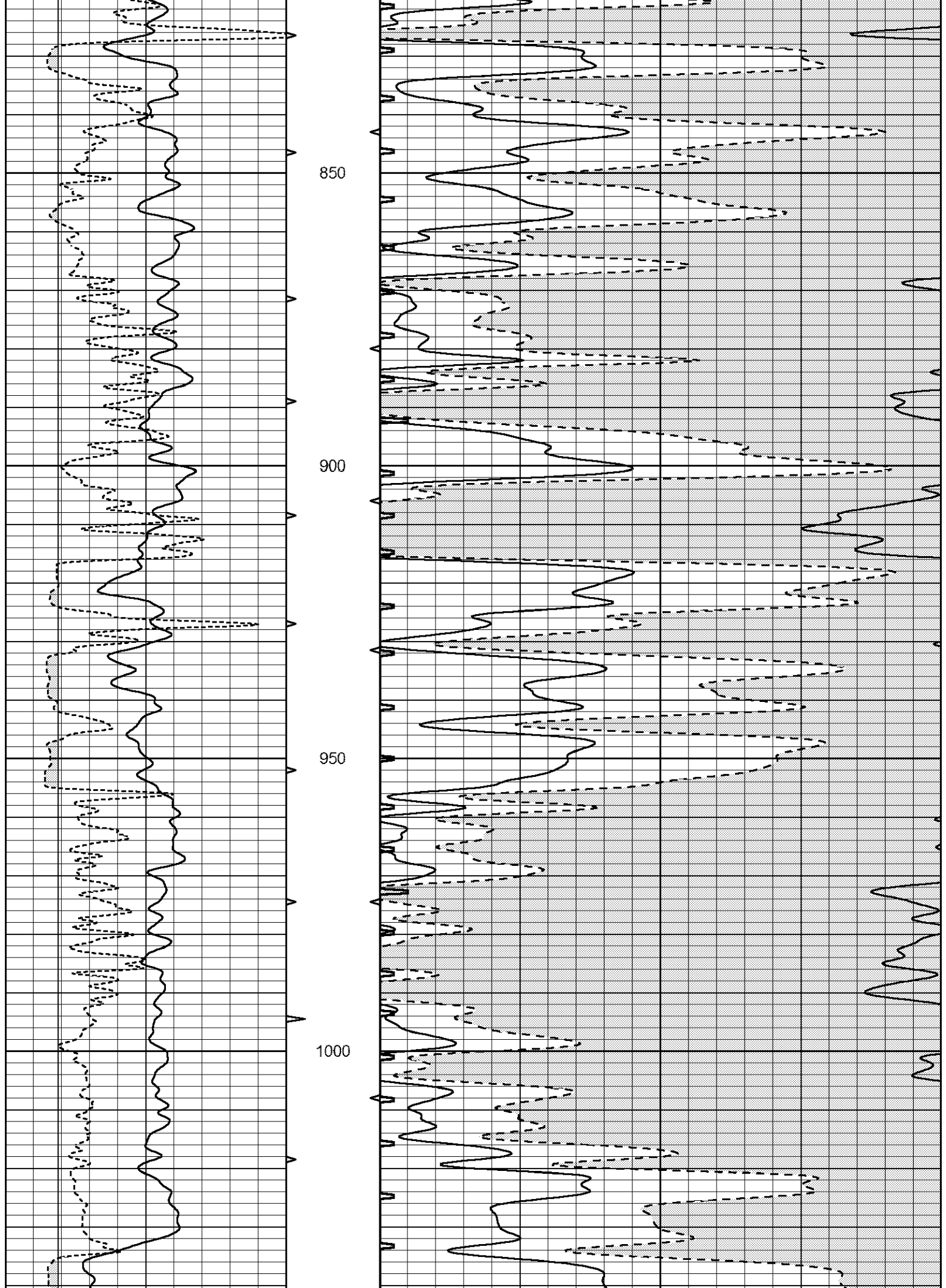
Database File 7024pe.db
 Dataset Pathname pass6.9
 Presentation Format _slt
 Dataset Creation Thu Sep 29 04:08:32 2022
 Charted by Depth in Feet scaled 1:240

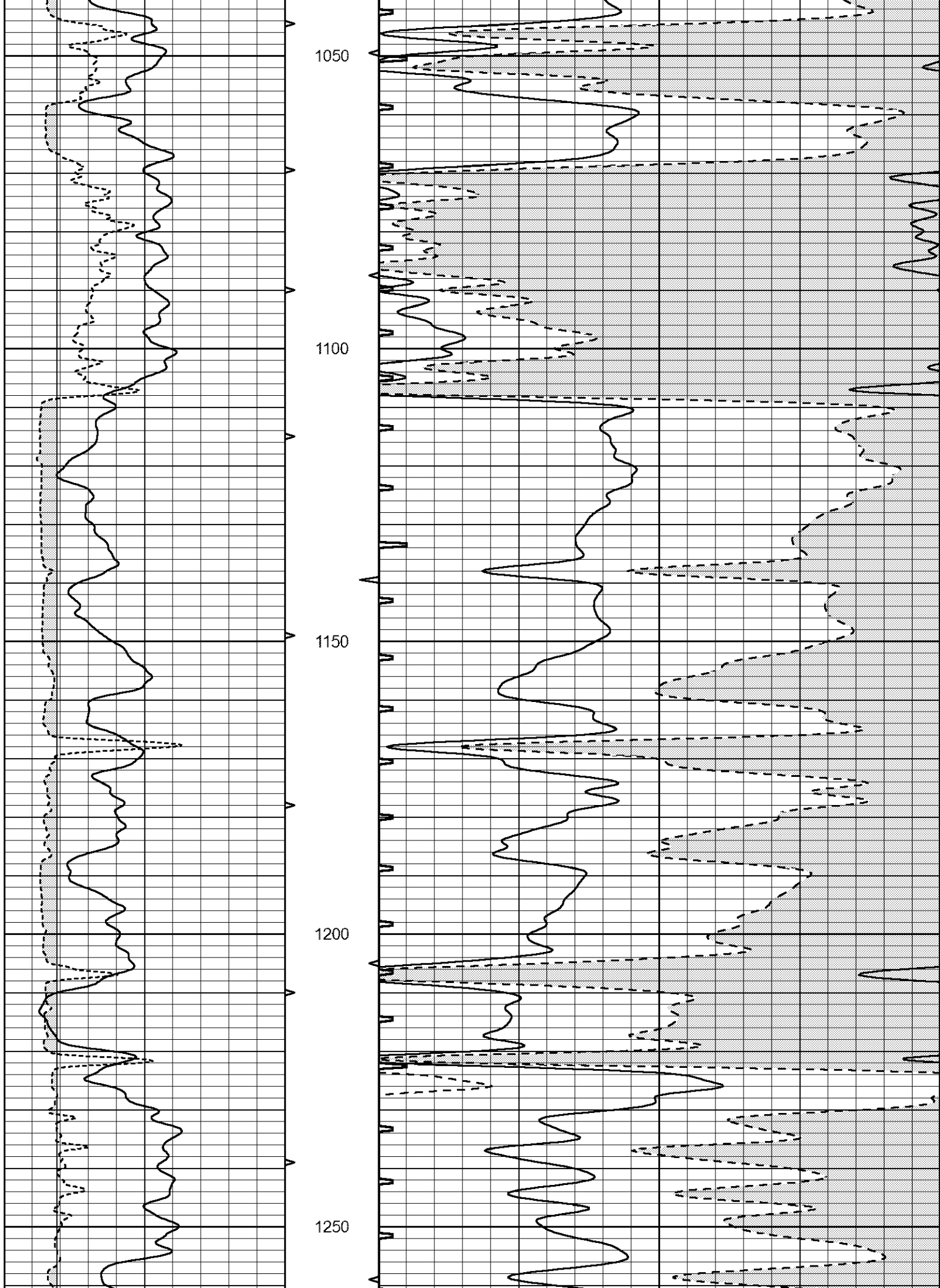
0	GAMMA RAY (GAPI)	150	ABHV	140	DELTA TIME (usec/ft)	40	
6	CALIPER (in)	16	10 (ft3)	0	30	SONIC POROSITY (pu)	-10
			TBHV	0	ITT (msec)	20	
			0 (ft3)	10			

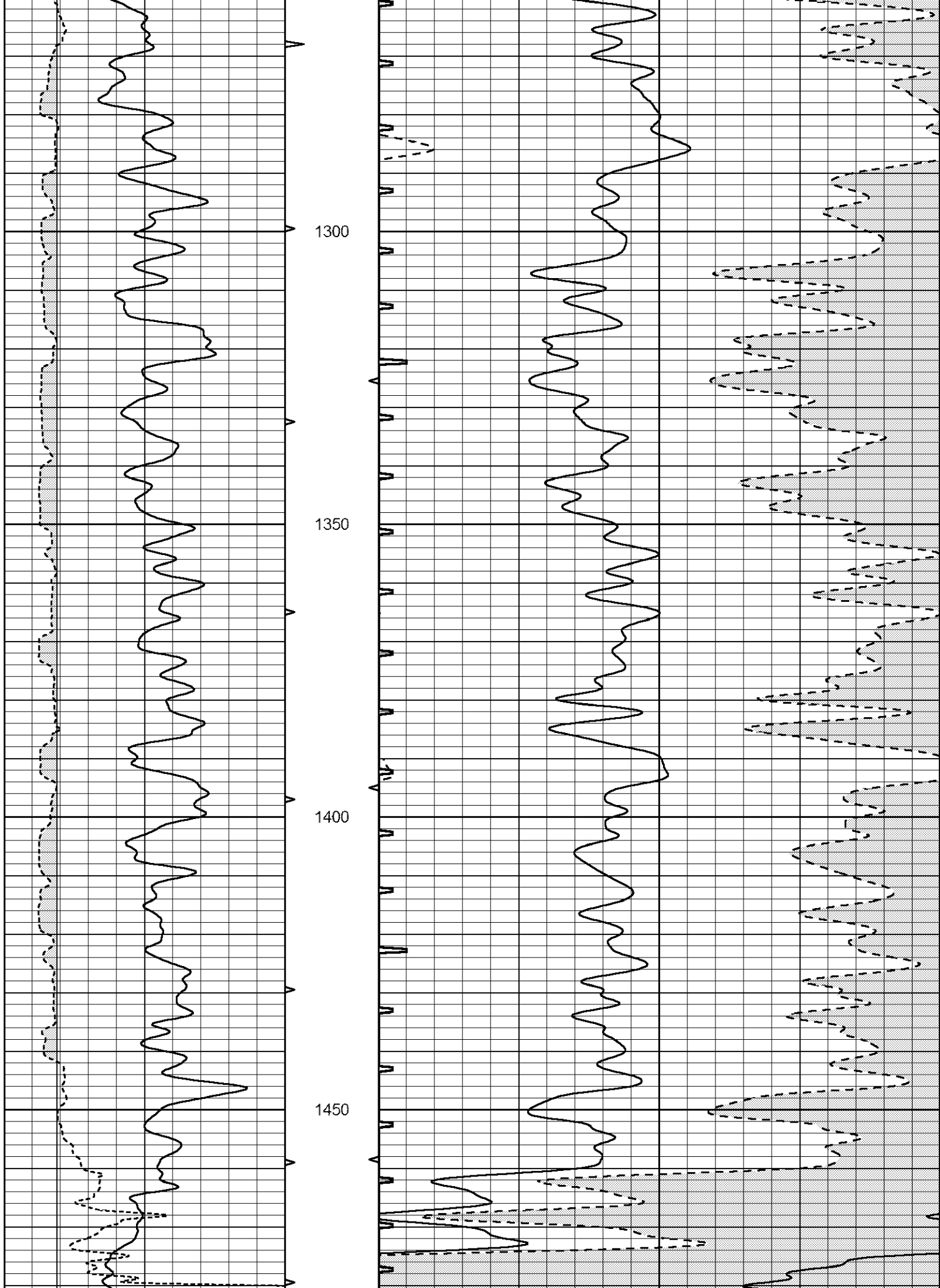


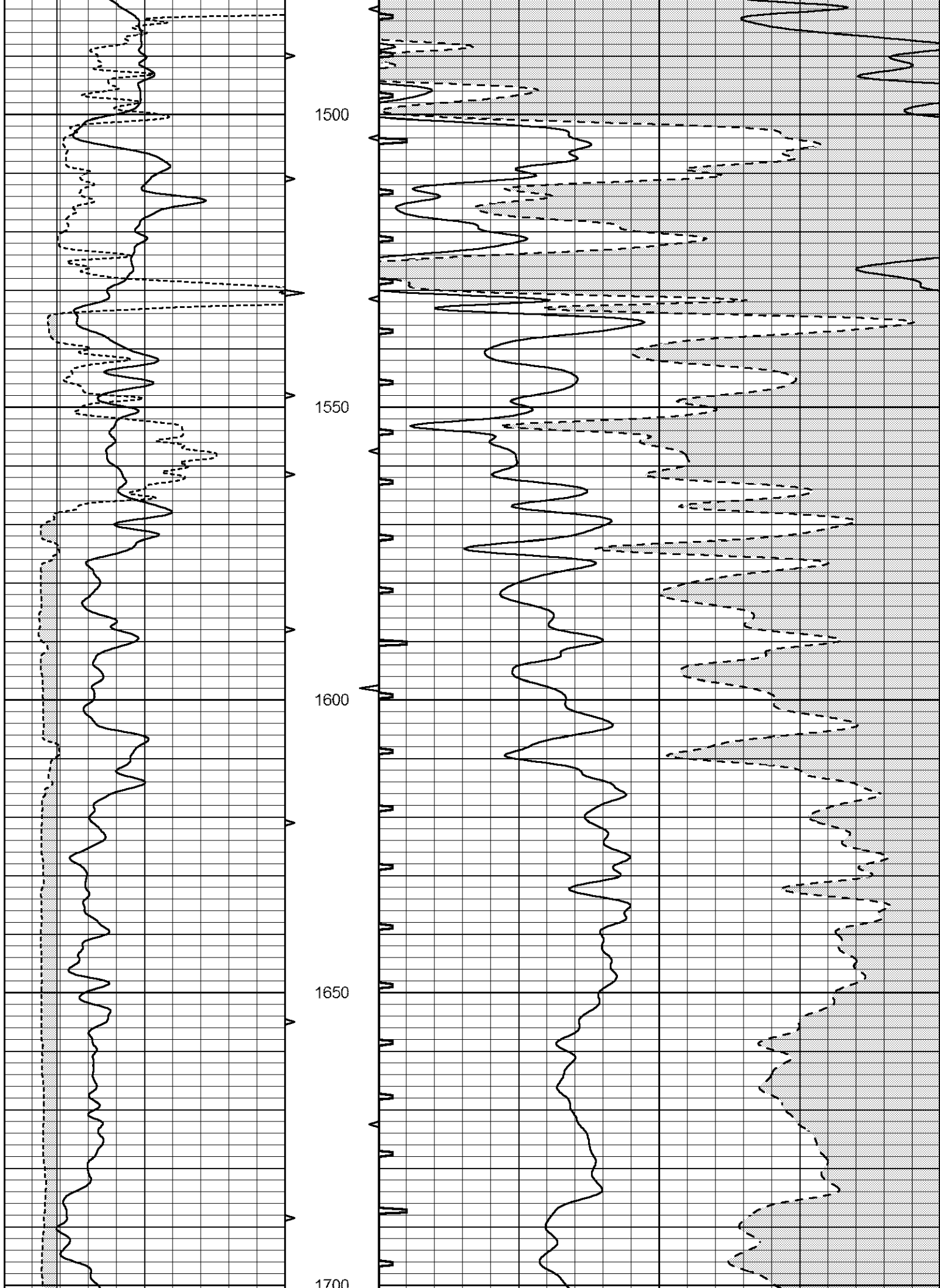


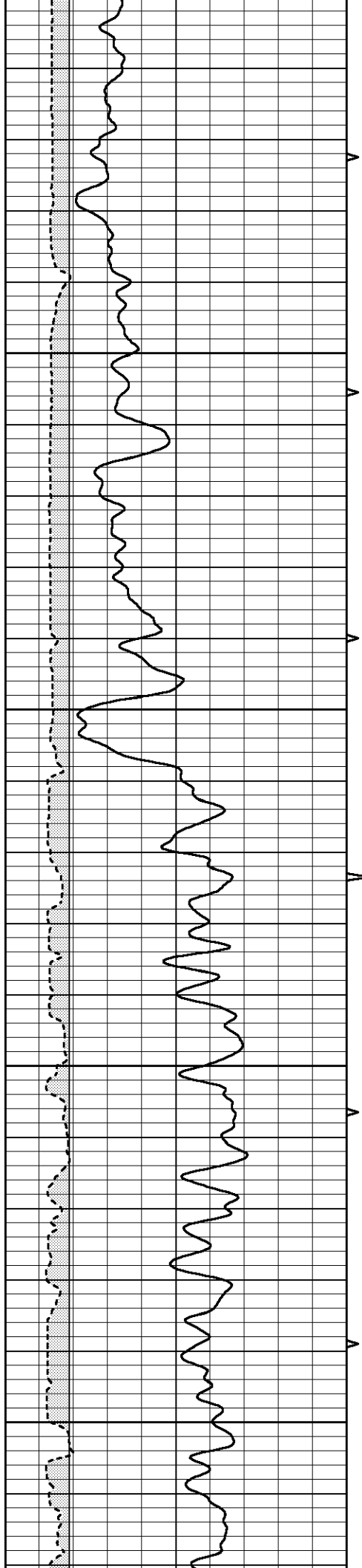




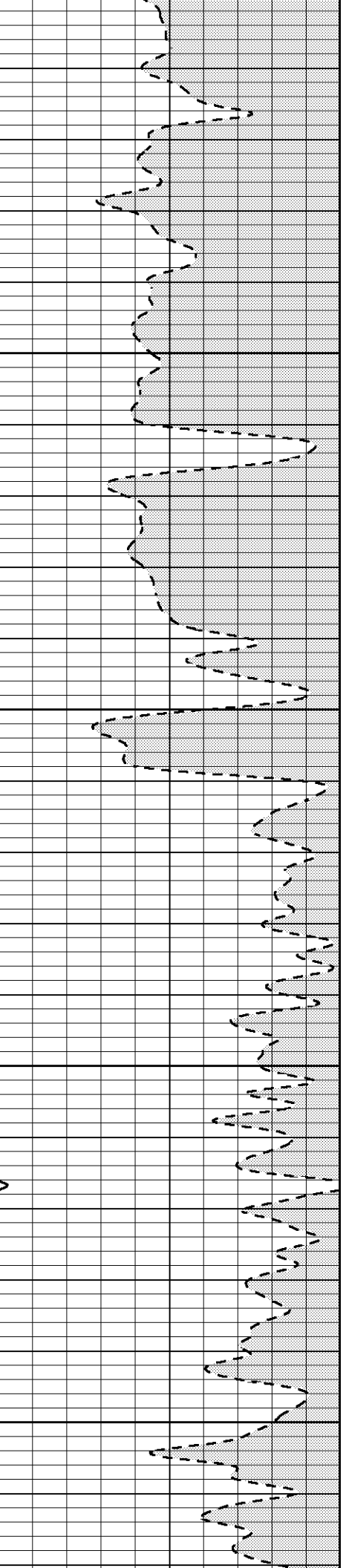
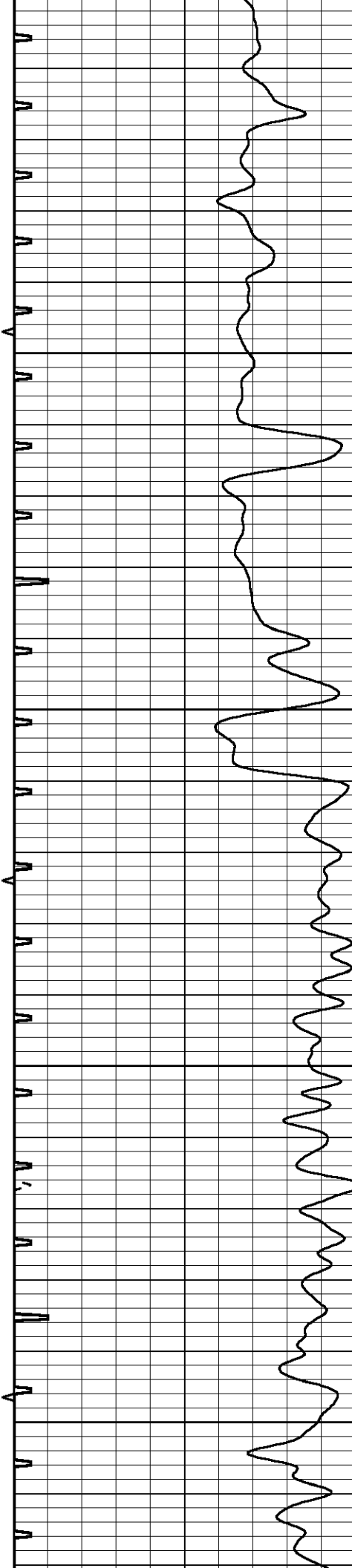


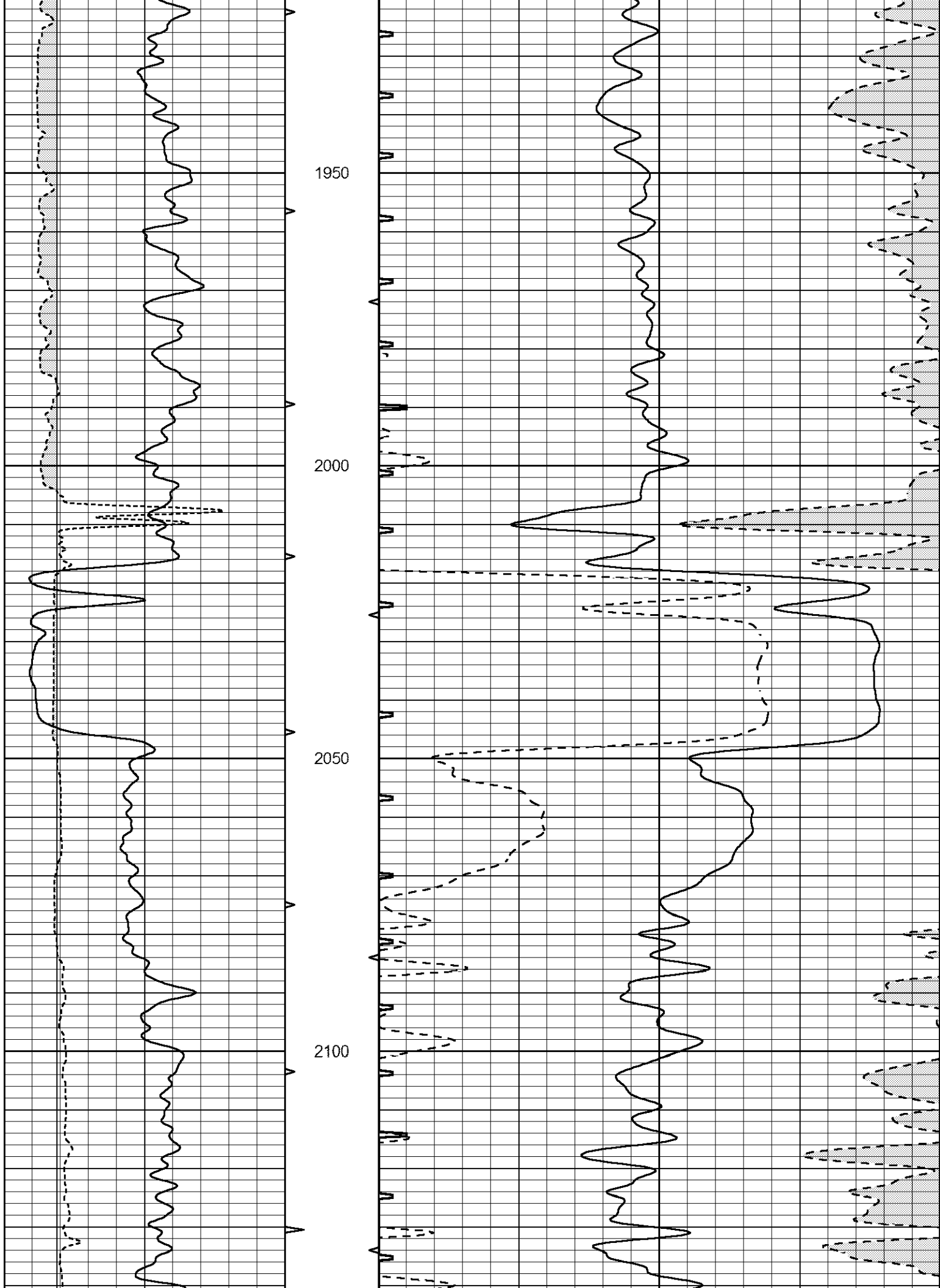


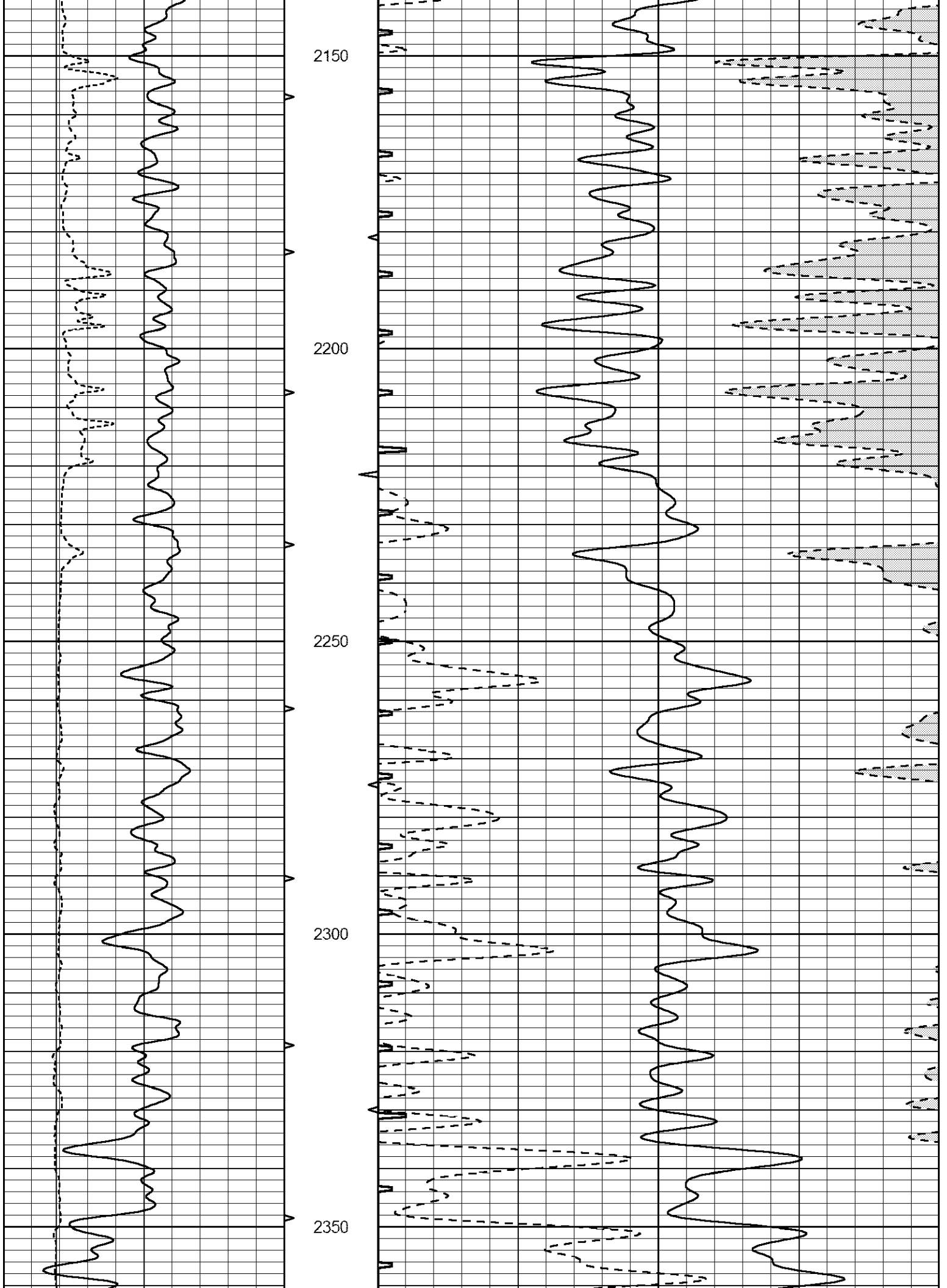


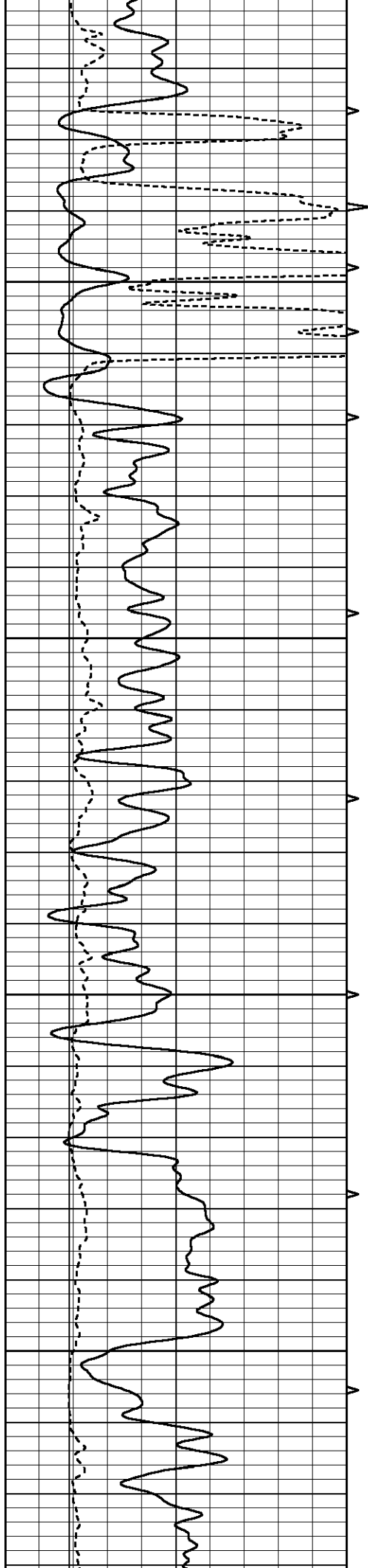


1700
1750
1800
1850
1900







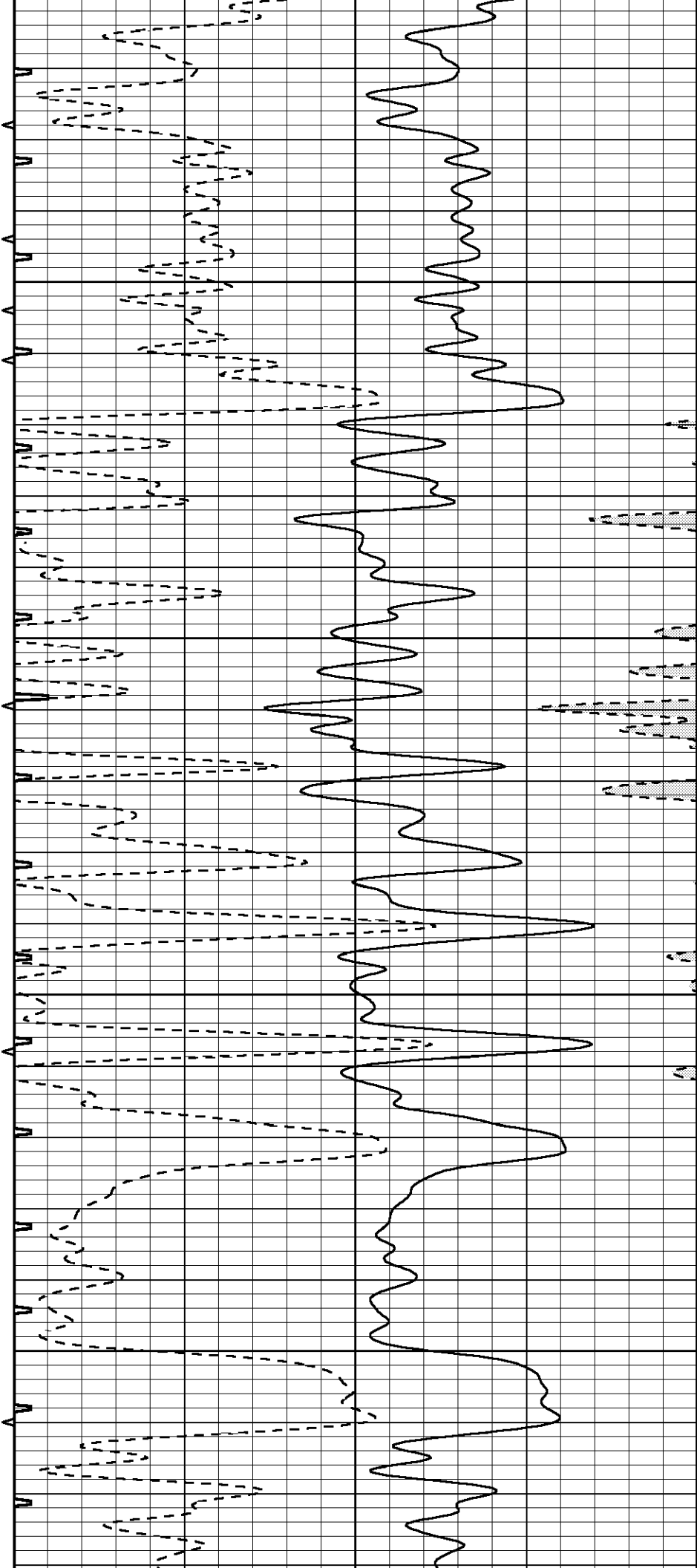


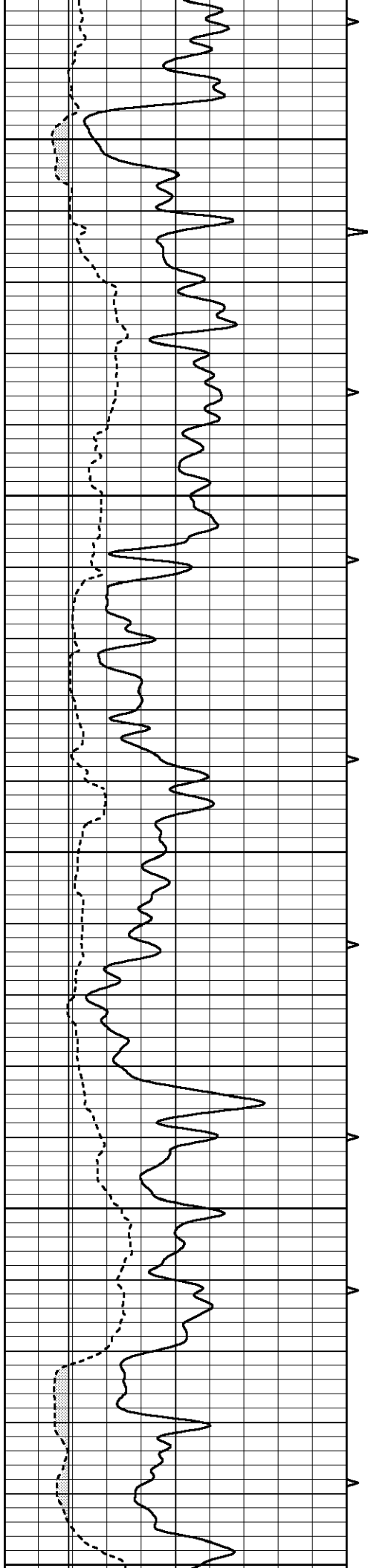
2400

2450

2500

2550





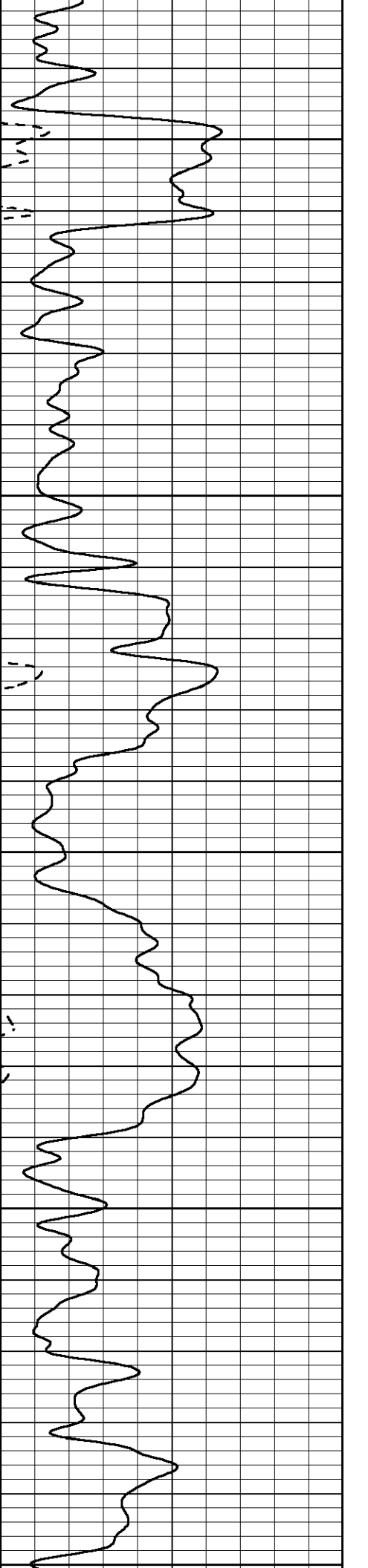
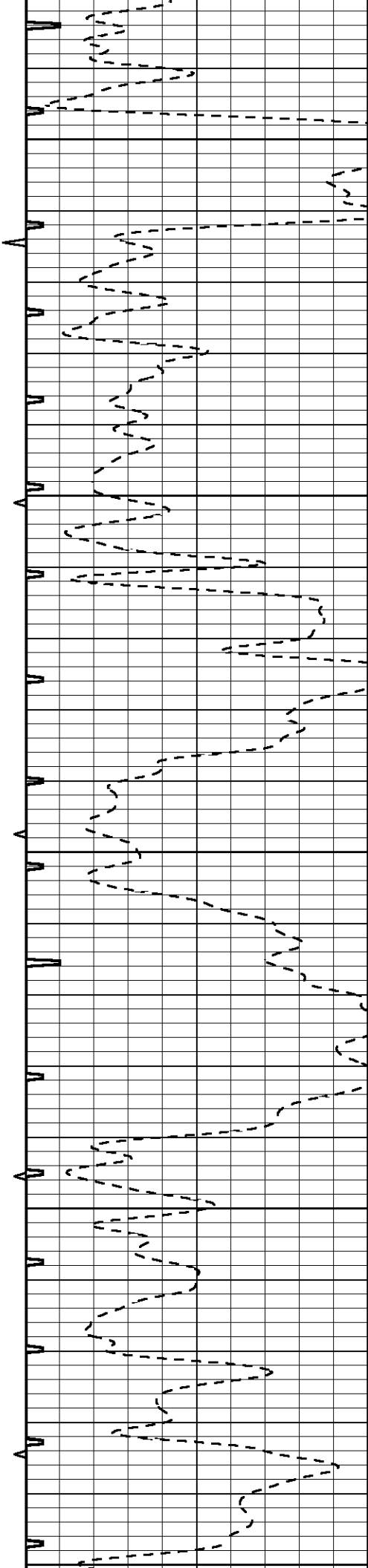
2600

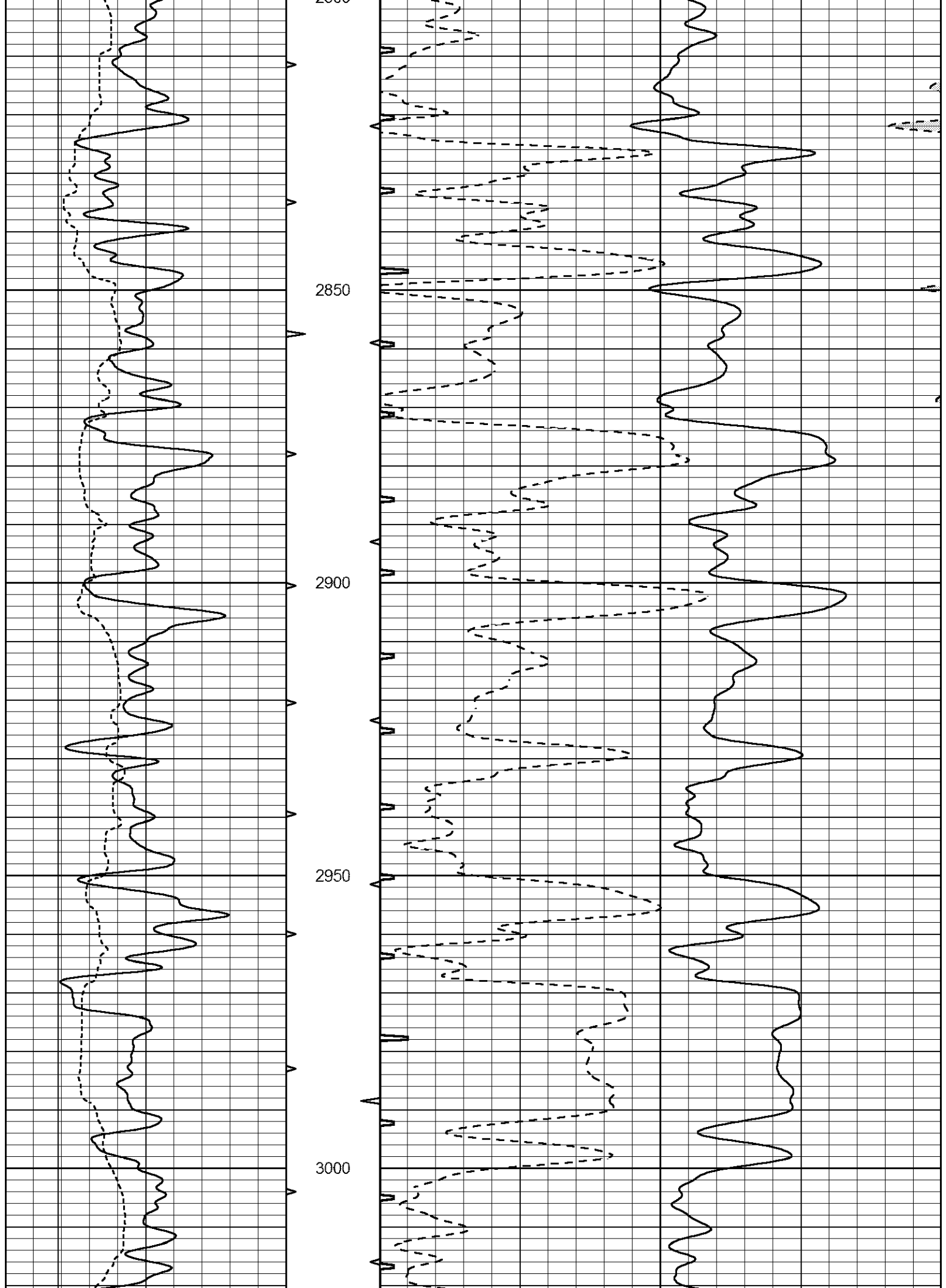
2650

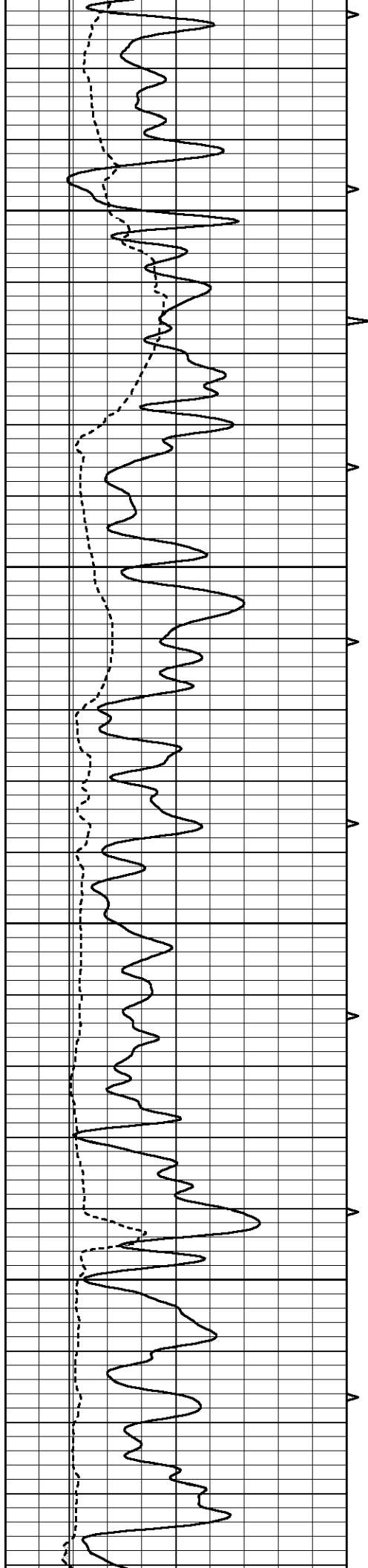
2700

2750

2800





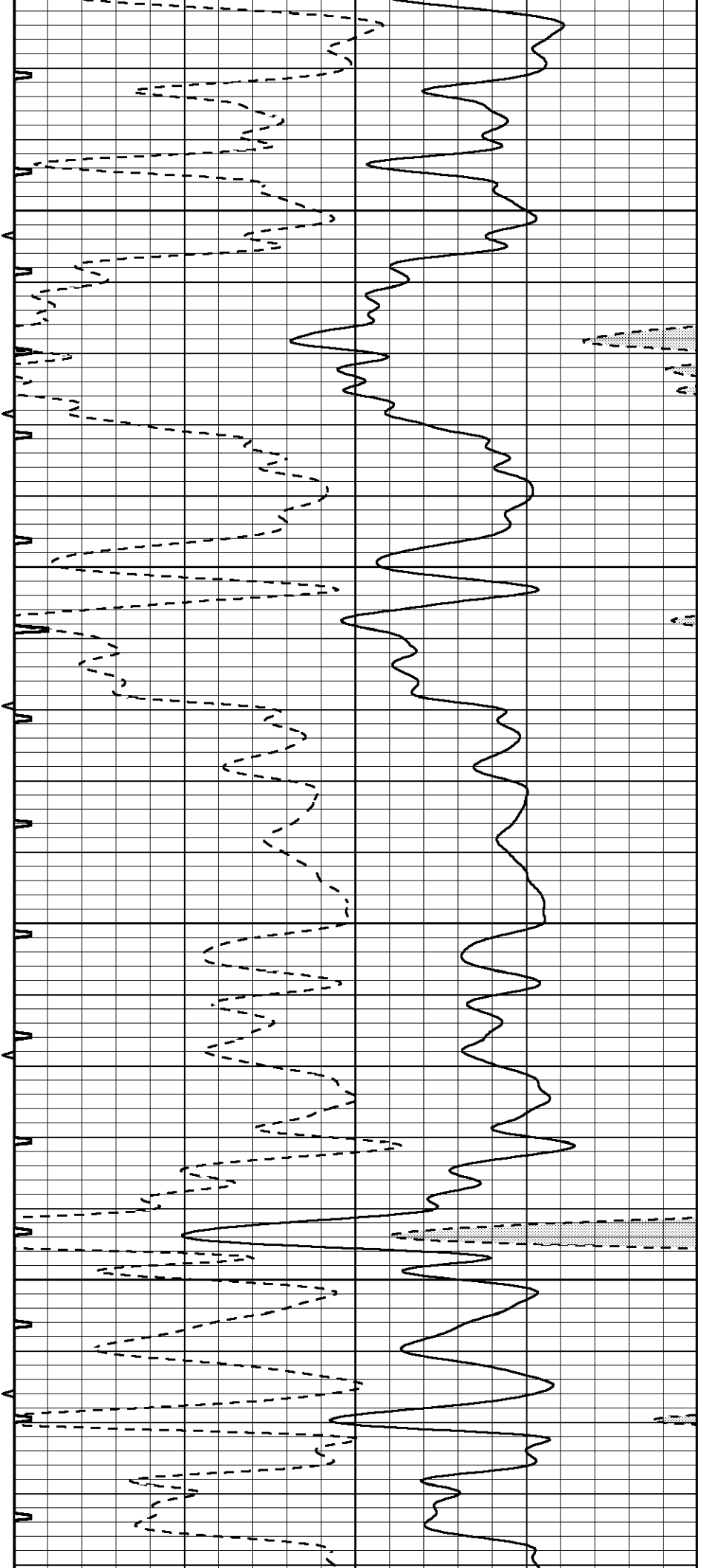


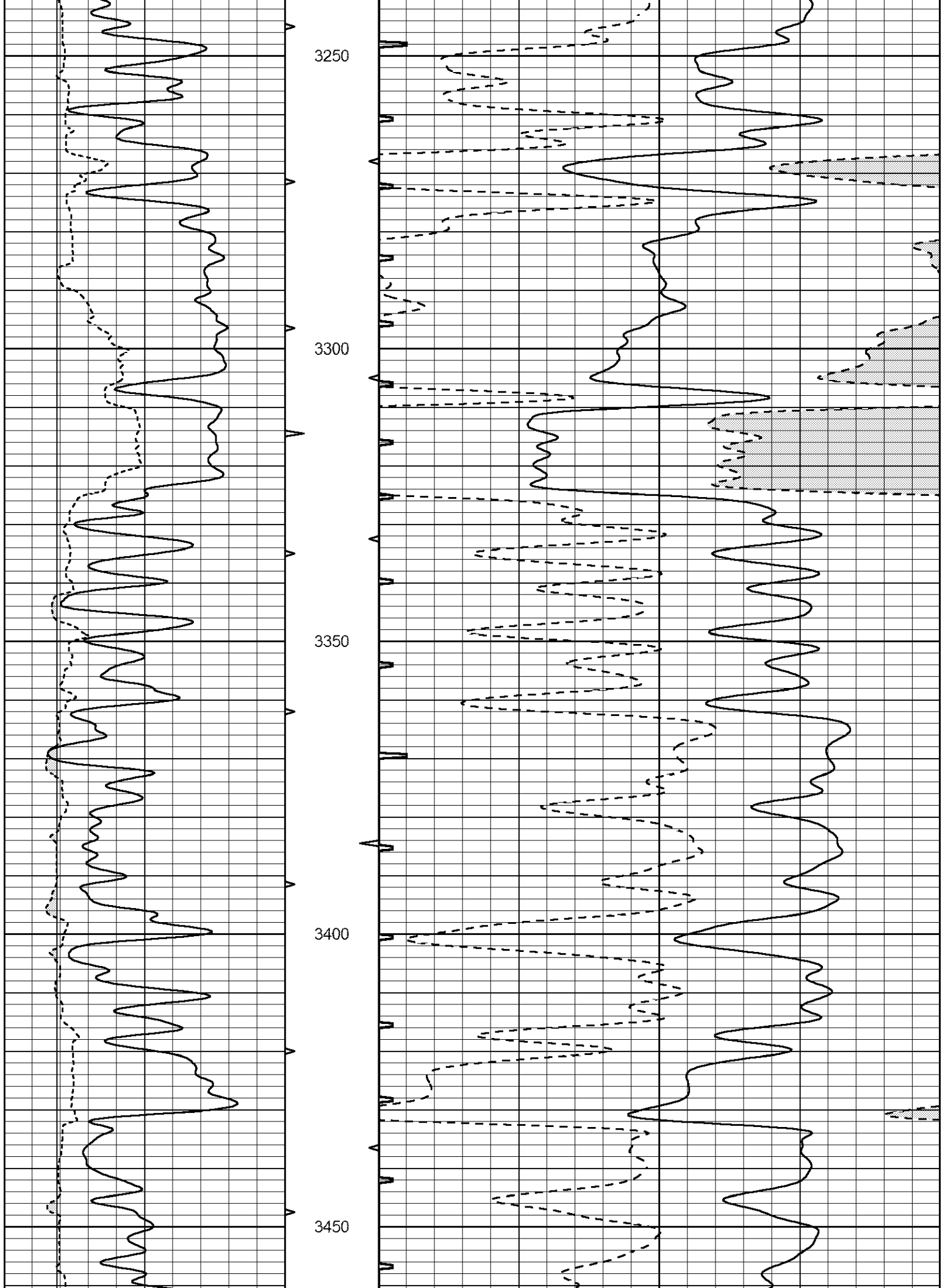
3050

3100

3150

3200





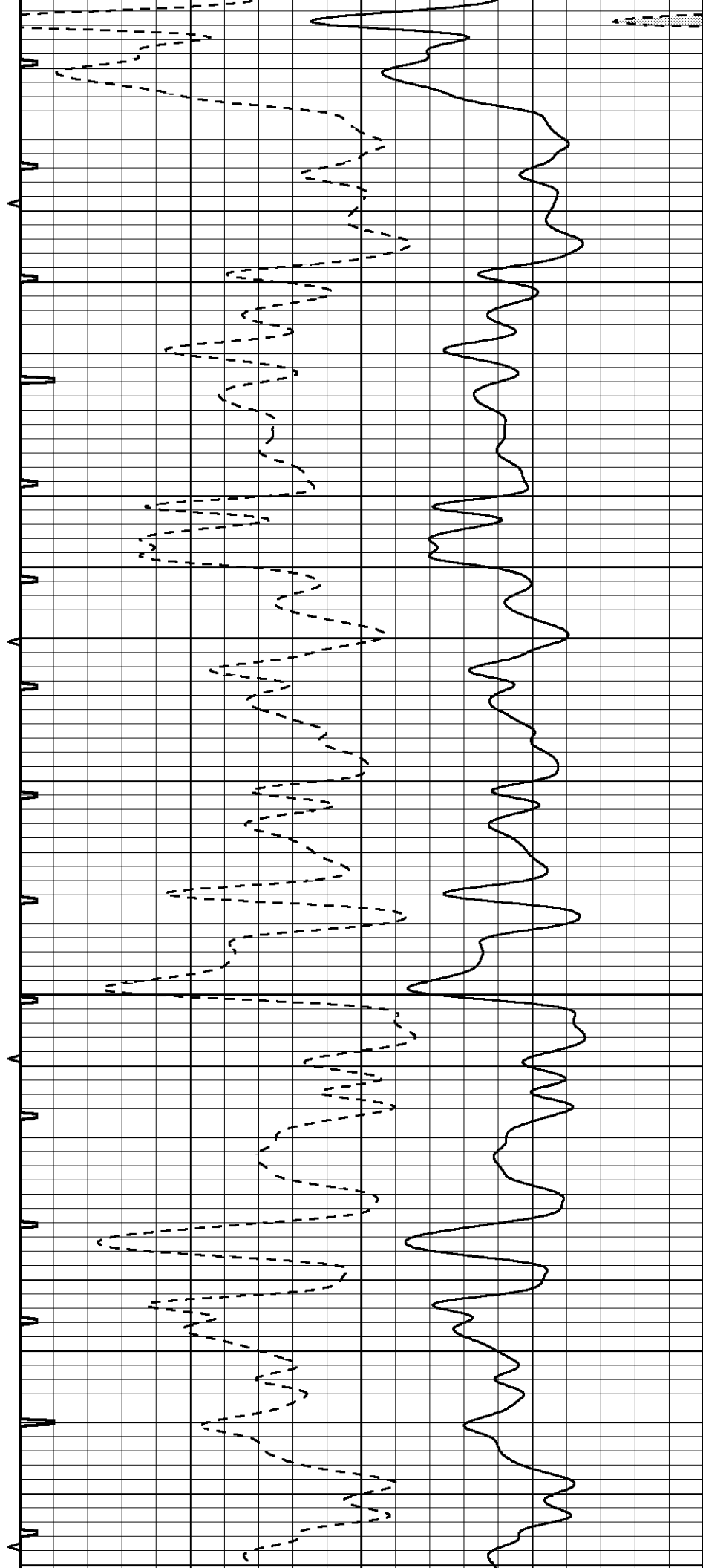


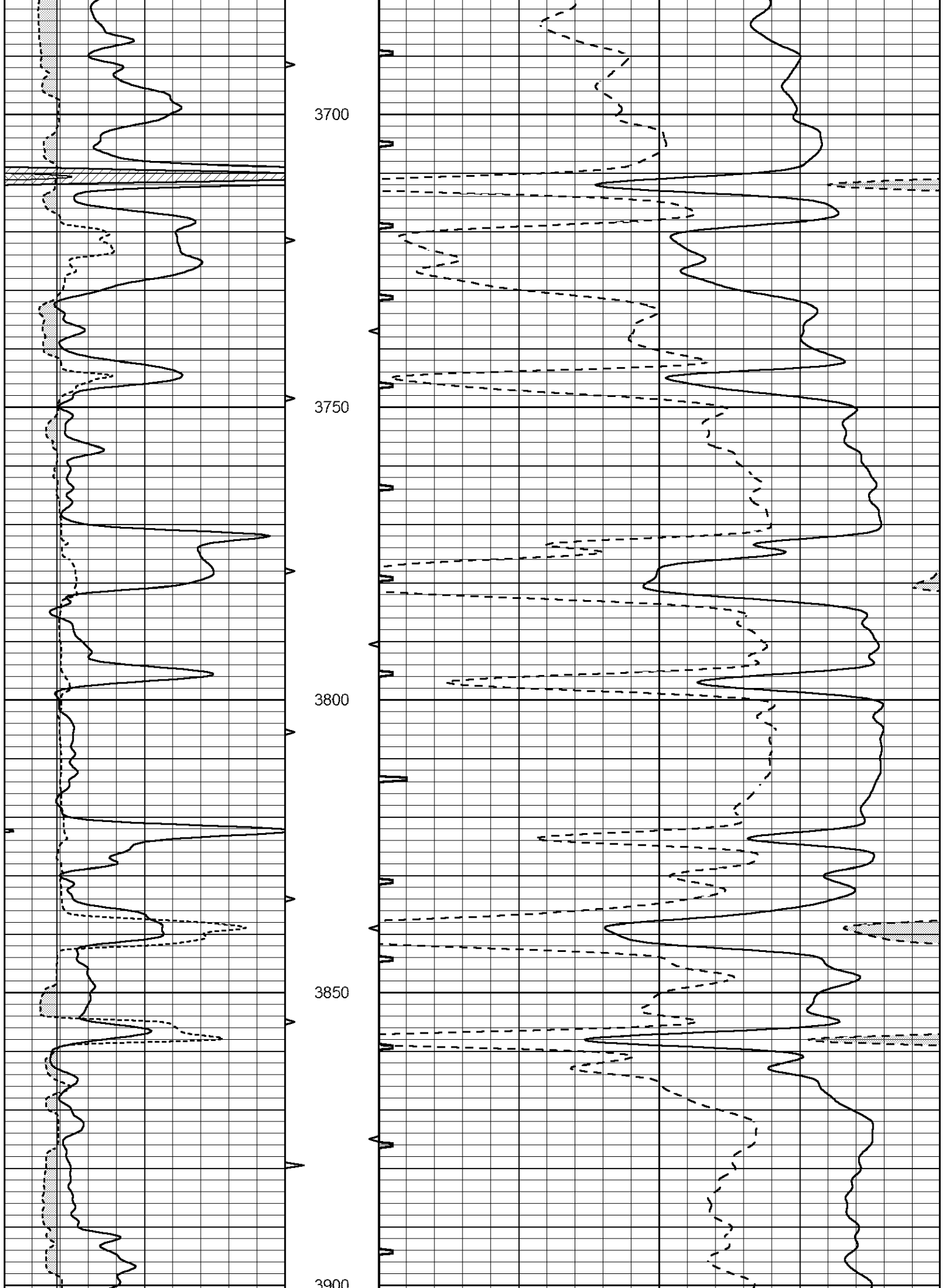
3500

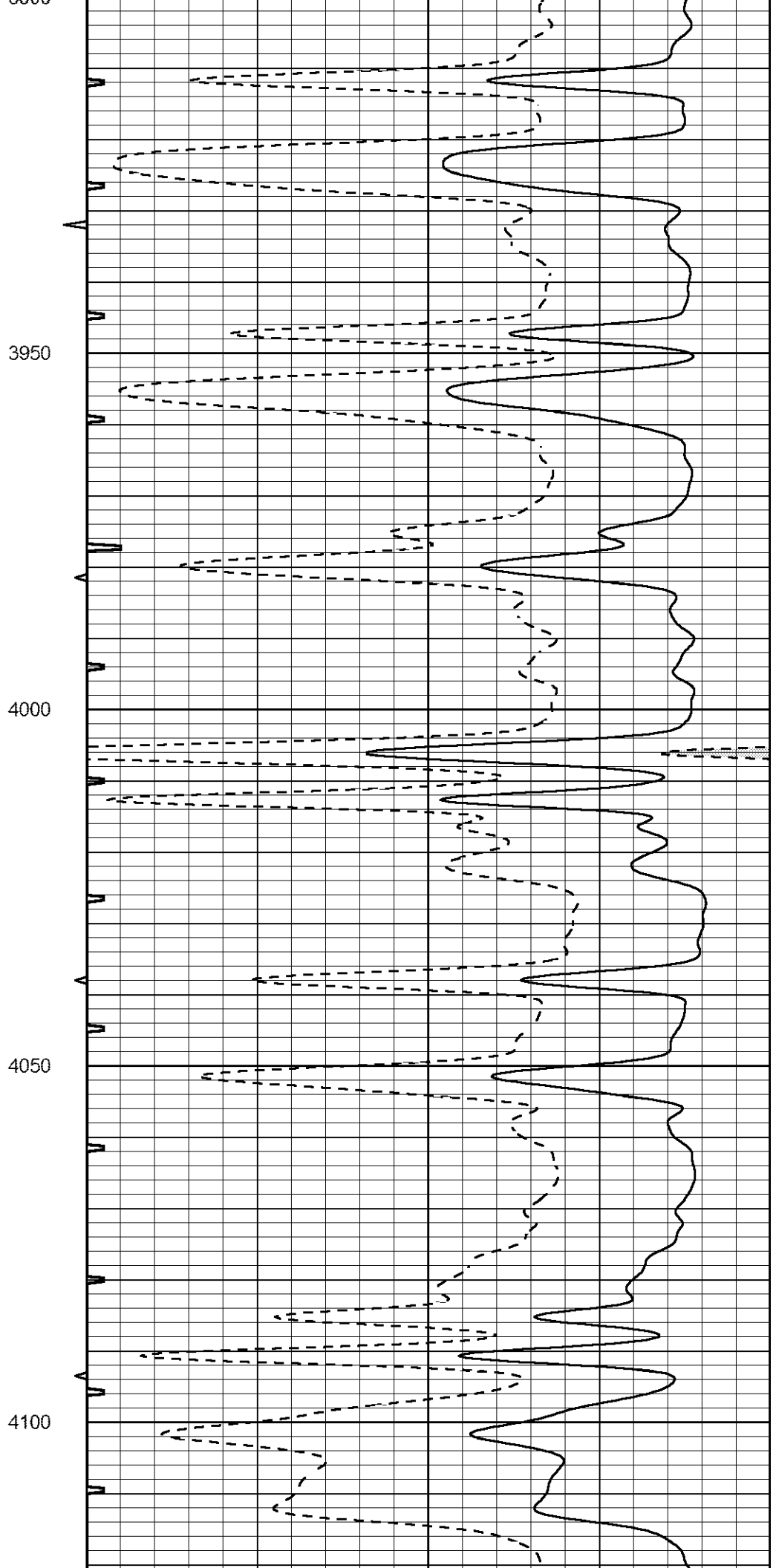
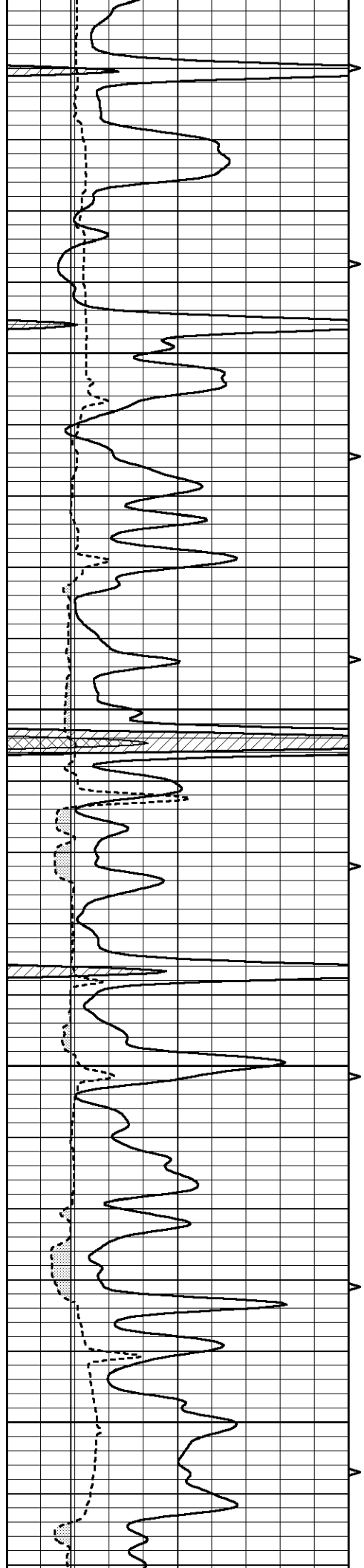
3550

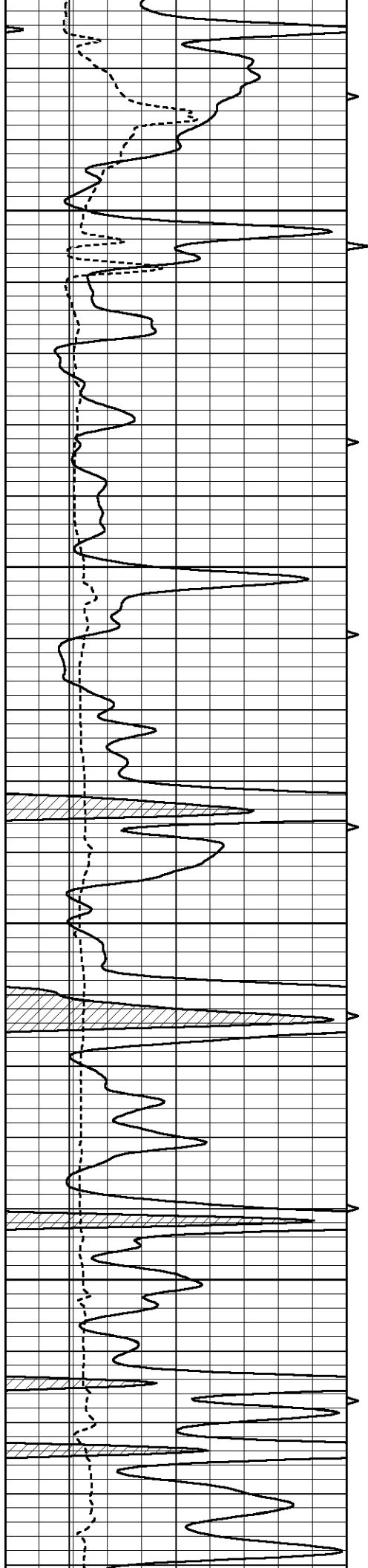
3600

3650







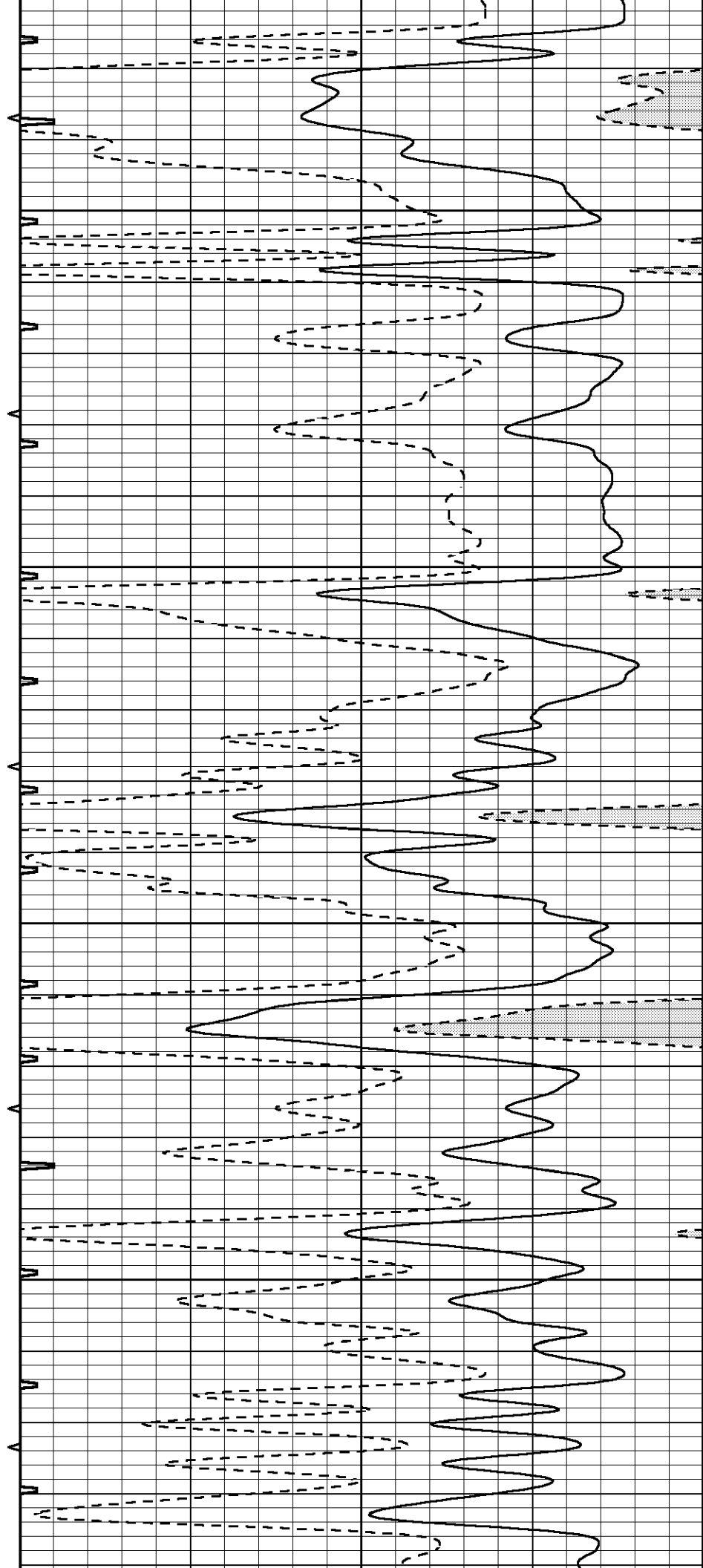


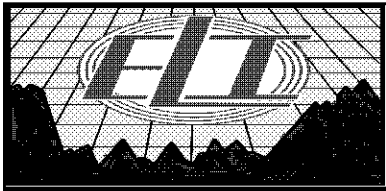
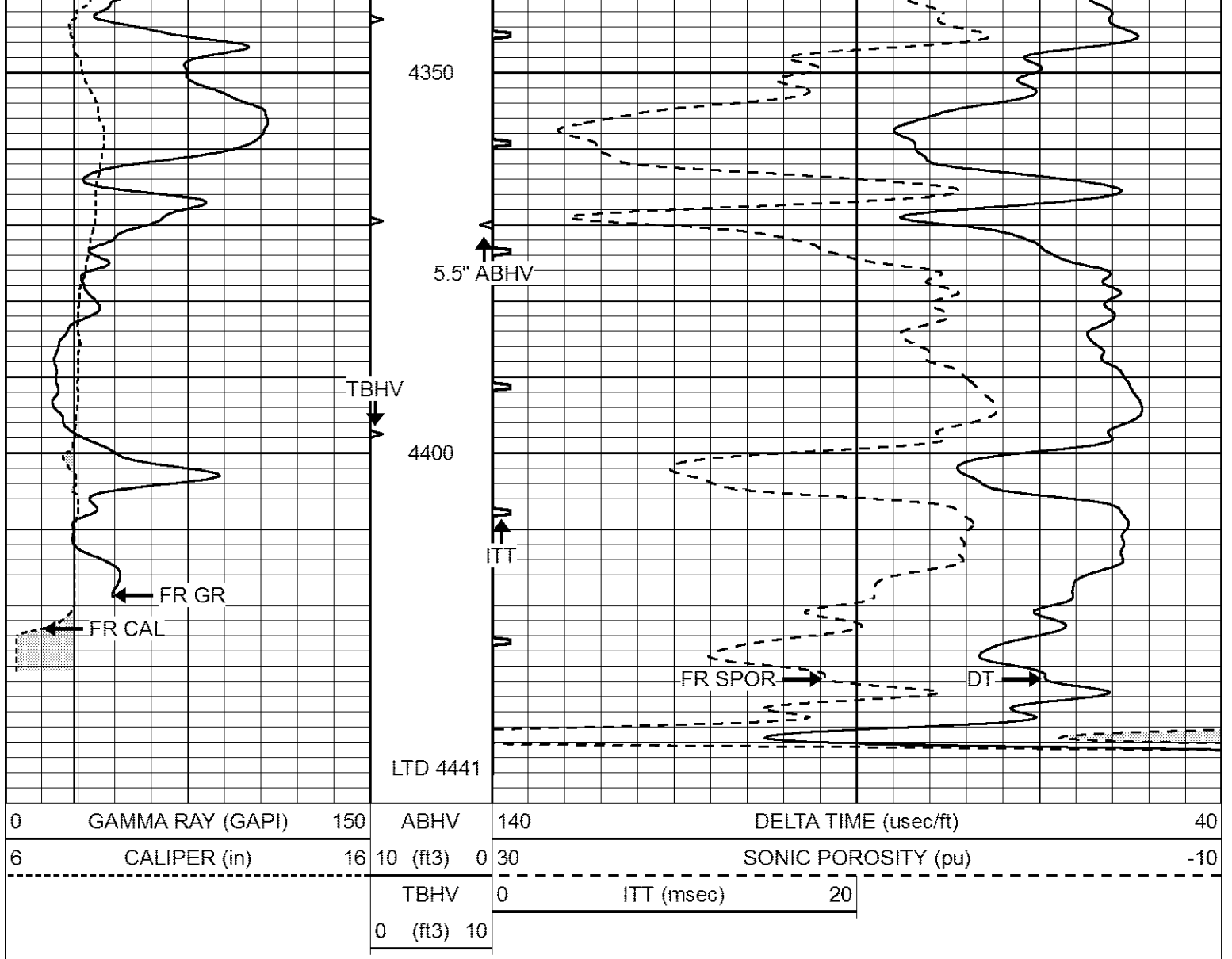
4150

4200

4250

4300

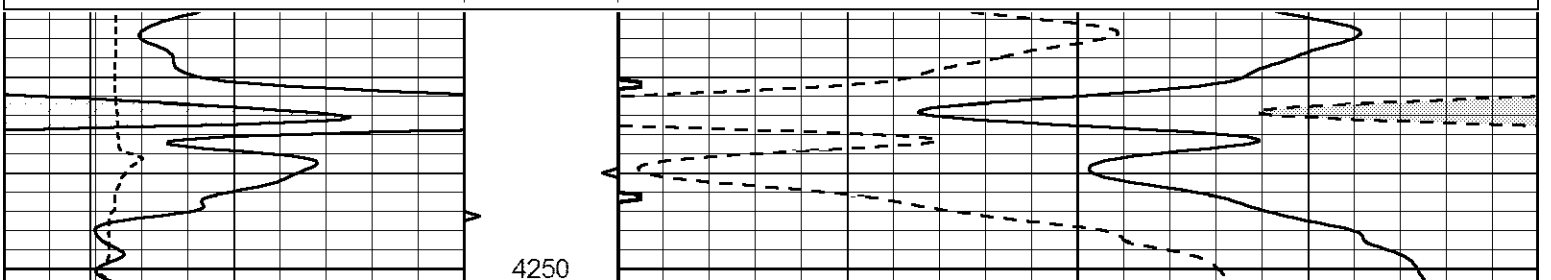


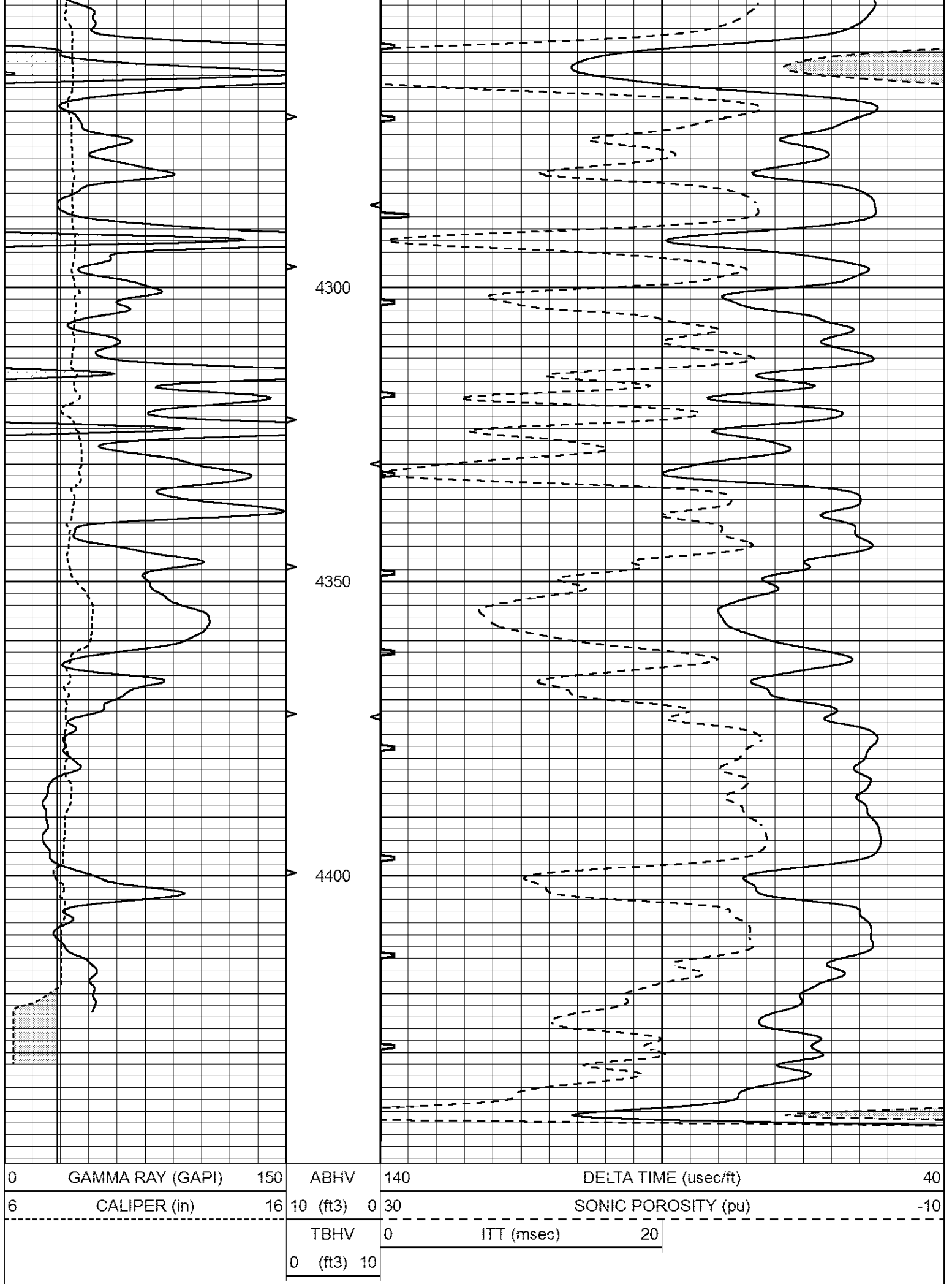


REPEAT SECTION

Database File 7024pe.db
 Dataset Pathname pass5.2
 Presentation Format _slt
 Dataset Creation Thu Sep 29 04:13:47 2022
 Charted by Depth in Feet scaled 1:240

0	GAMMA RAY (GAPI)	150	ABHV	140	DELTA TIME (usec/ft)	40
6	CALIPER (in)	16	10 (ft3) 0	30	SONIC POROSITY (pu)	-10
			TBHV	0	ITT (msec)	20
			0 (ft3) 10			





0	GAMMA RAY (GAPI)	150	ABHV	140	DELTA TIME (usec/ft)	40	
6	CALIPER (in)	16	10 (ft3)	0	30	SONIC POROSITY (pu)	-10
			TBHV	0	ITT (msec)	20	
			0 (ft3)	10			