



# MICRO LOG

Company GRAND MESA OPERATING COMPANY  
 Well YORK #1-4  
 Field UNNAMED  
 County LANE  
 State KANSAS

Company GRAND MESA OPERATING COMPANY  
 Well YORK #1-4  
 Field UNNAMED  
 County LANE State KANSAS

Location: API #: 15-101-22673-0000  
 577' FSL & 2489' FEL  
 NW - SW - SW - SE  
 SEC 4 TWP 16S RGE 29W  
 Permanent Datum GROUND LEVEL Elevation 2619  
 Log Measured From KELLY BUSHING 11' A.G.L.  
 Drilling Measured From KELLY BUSHING

Other Services  
 CDL/CNL/PE  
 DIL/SON

Elevation  
 K.B. 2630  
 D.F. 2628  
 G.L. 2619

Date	9/29/22
Run Number	ONE
Depth Driller	4440
Depth Logger	4441
Bottom Logged Interval	4425
Top Log Interval	200
Casing Driller	8 5/8" @ 227
Casing Logger	227
Bit Size	7 7/8
Type Fluid in Hole	CHEMICAL MUD
Density / Viscosity	9.2/50
PH / Fluid Loss	10.5/7.2
Source of Sample	FLOWLINE
Rm @ Meas. Temp	1.50 @ 78F
Rmt @ Meas. Temp	1.13 @ 78F
Rmc @ Meas. Temp	1.80 @ 78F
Source of Rmf / Rmc	MEASUREMENT
Rm @ BHT	.975 @ 120F
Time Circulation Stopped	5 HOURS
Time Logger on Bottom	2:00 A.M.
Maximum Recorded Temperature	120F
Equipment Number	3802
Location	HAYS, KANSAS
Recorded By	COLE ROBBEN
Witnessed By	GARET DINKEL

<<< Fold Here >>>

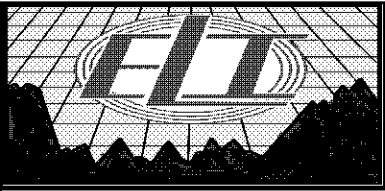
All interpretations are opinions based on inferences from electrical or other measurements and we cannot and do not guarantee the accuracy or correctness of any interpretation, and we shall not, except in the case of gross or willful negligence on our part, be liable or responsible for any loss, costs, damages, or expenses incurred or sustained by anyone resulting from any interpretation made by any of our officers, agents or employees. These interpretations are also subject to our general terms and conditions set out in our current Price Schedule.

### Comments

THANK YOU FOR USING ELI WIRELINE SERVICES, HAYS, KS. ( 785 ) 628-6395

### DIRECTIONS:

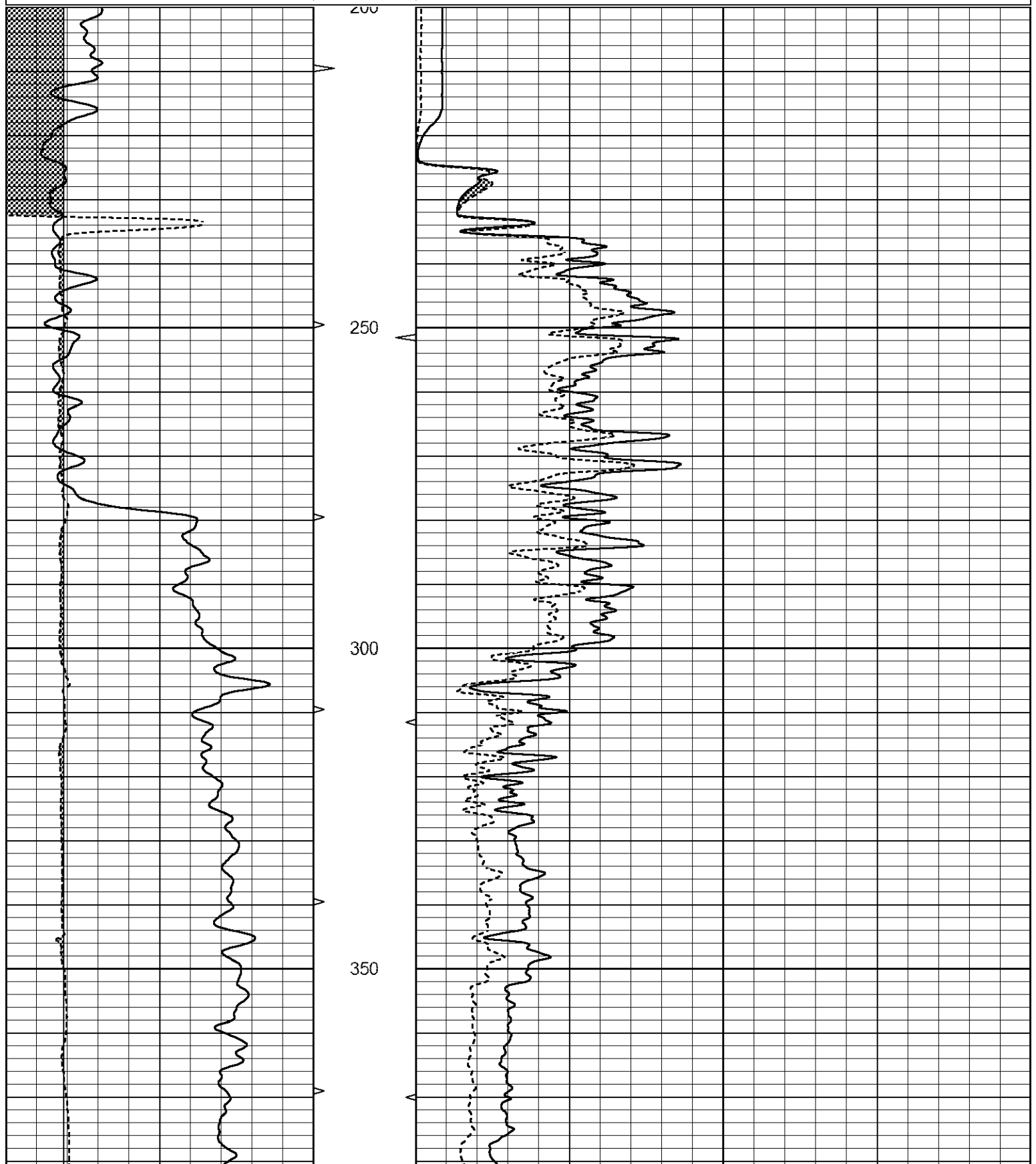
FROM HIGHWAY 4/23 INTERSECTION NORTH 6 MILES TO LANE GOVE RD., 2 MILES WEST TO N HICKOCK RD., SOUTH 3/4 MILES AND WEST INTO, FOLLOW LEASE ROAD NORTHEAST

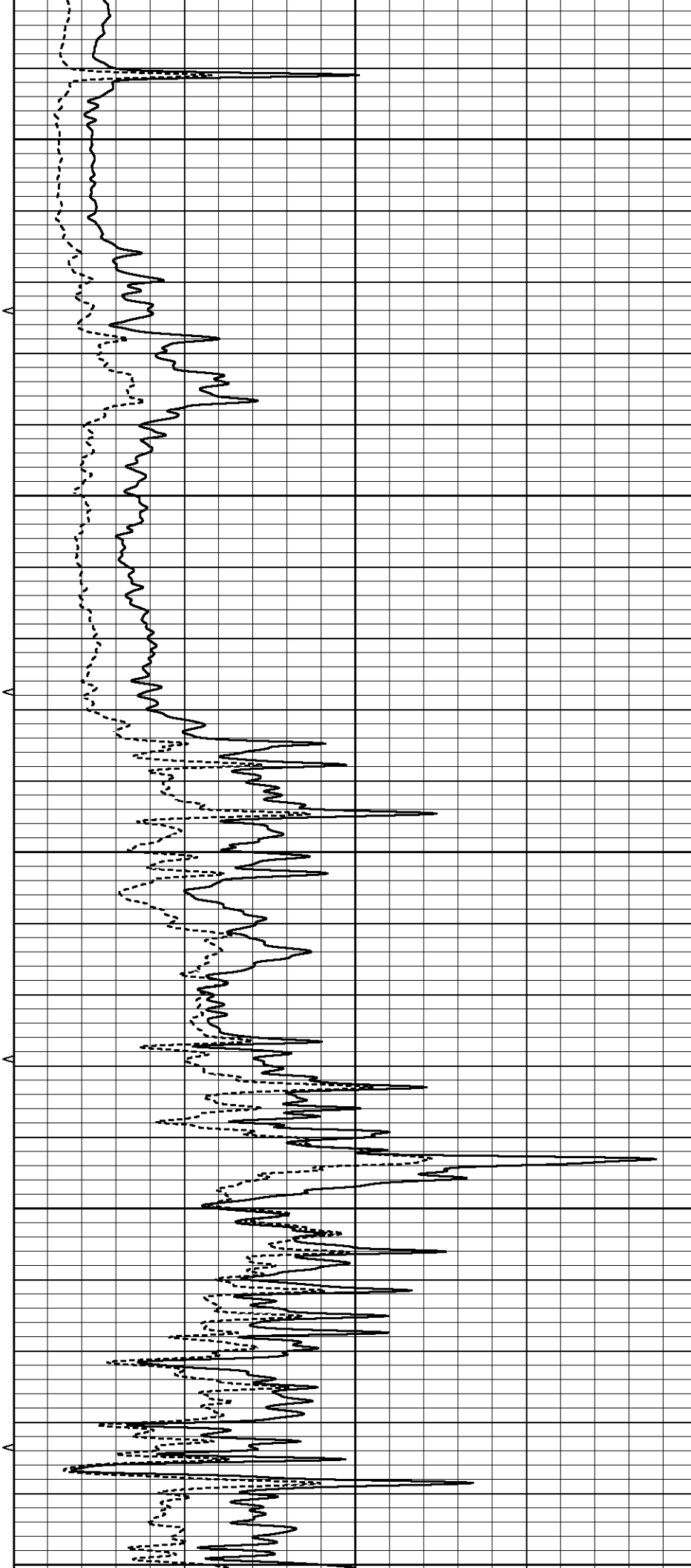
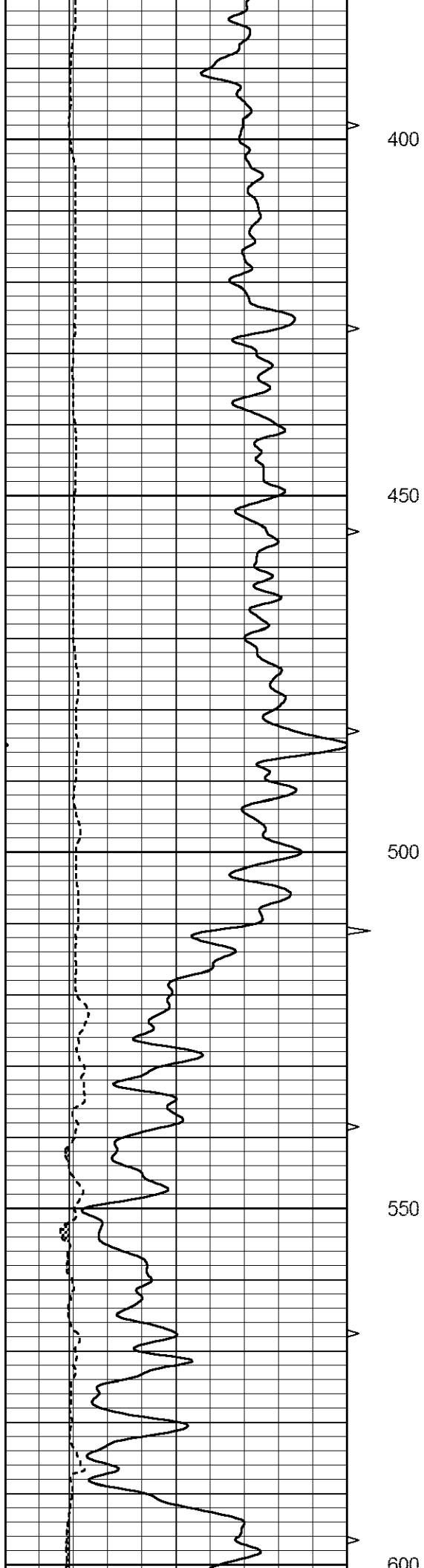


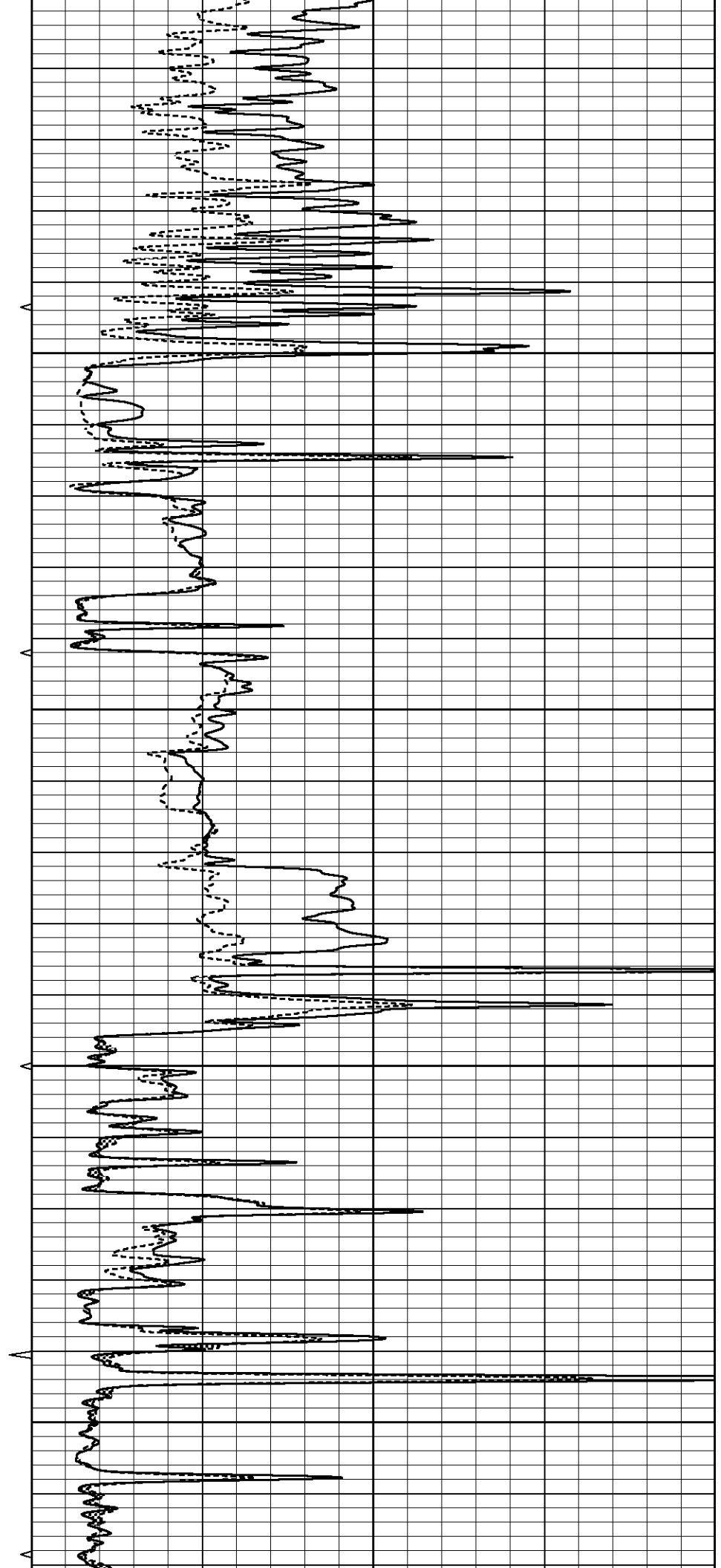
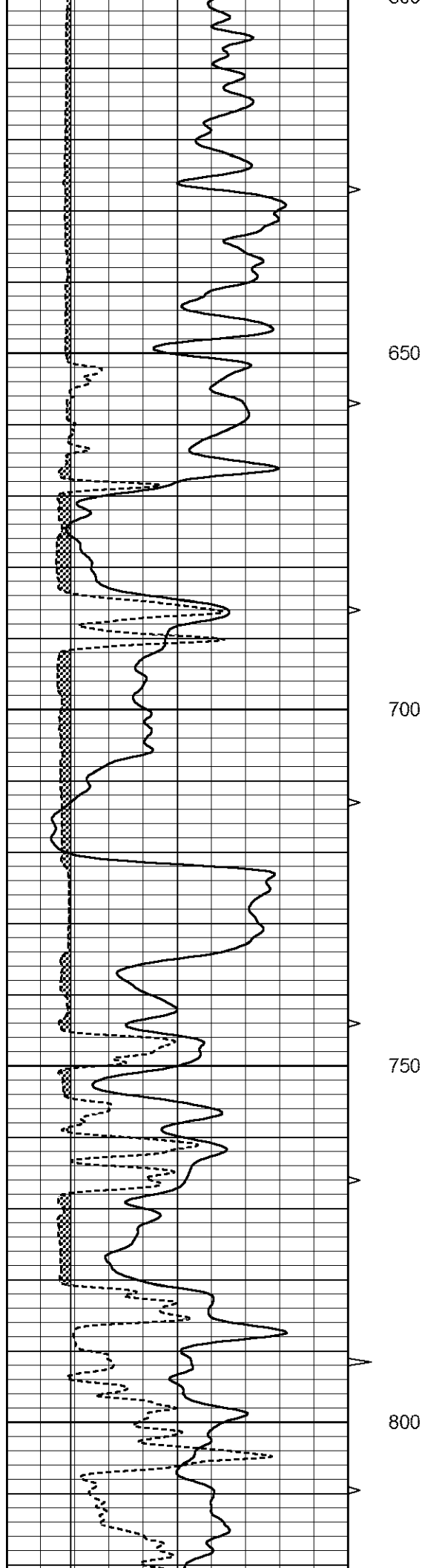
# MAIN SECTION

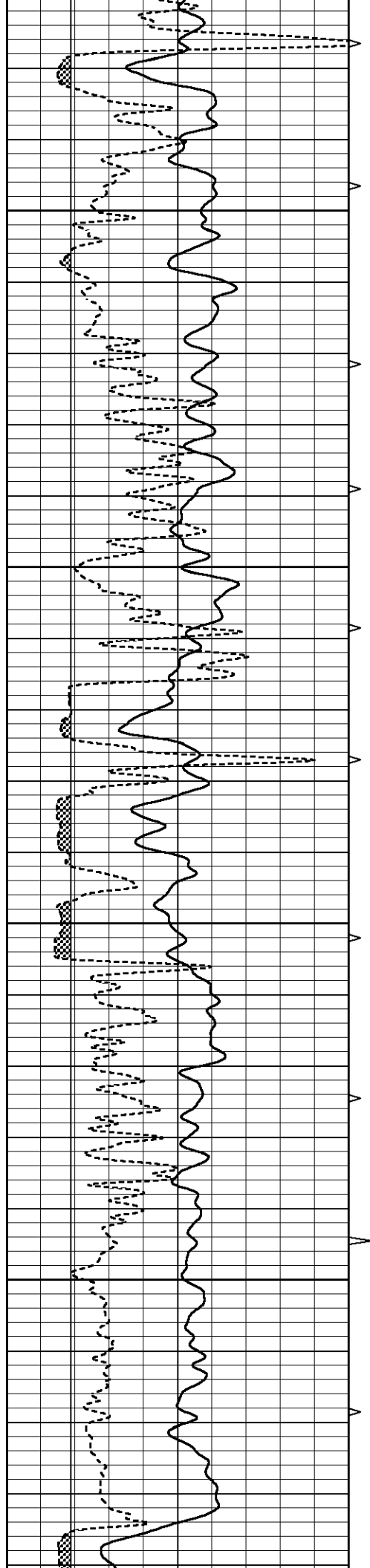
Database File 7024pe.db  
 Dataset Pathname pass6M  
 Presentation Format \_micro  
 Dataset Creation Thu Sep 29 03:59:15 2022  
 Charted by Depth in Feet scaled 1:240

0	GAMMA RAY (GAPI)	150	ABHV	0	MEL1.5 (Ohm-m)	40
6	CALIPER (in)	16	10 (ft3)	0	MEL2.0 (Ohm-m)	40
			TBHV			
			0 (ft3)	10		







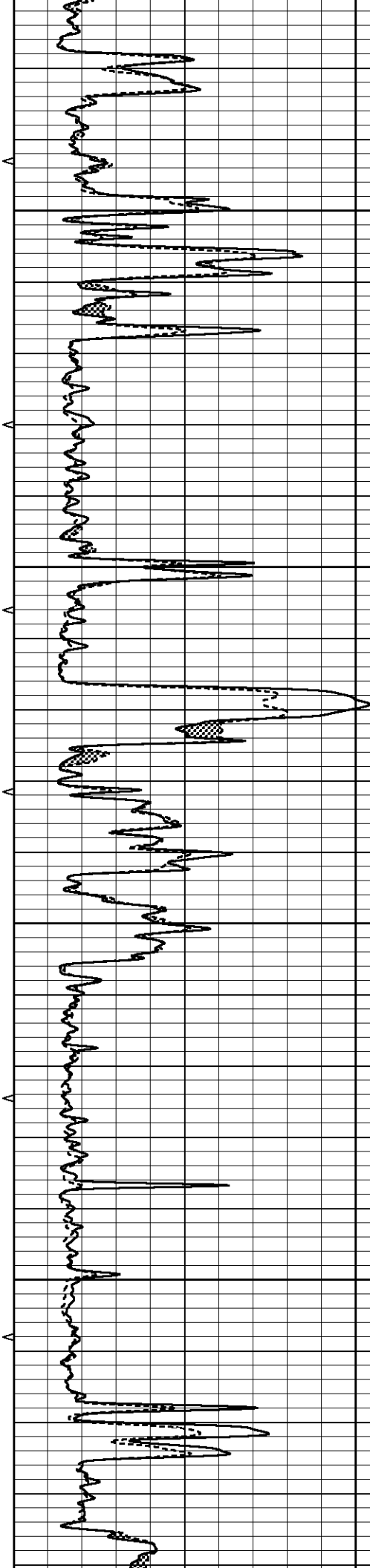


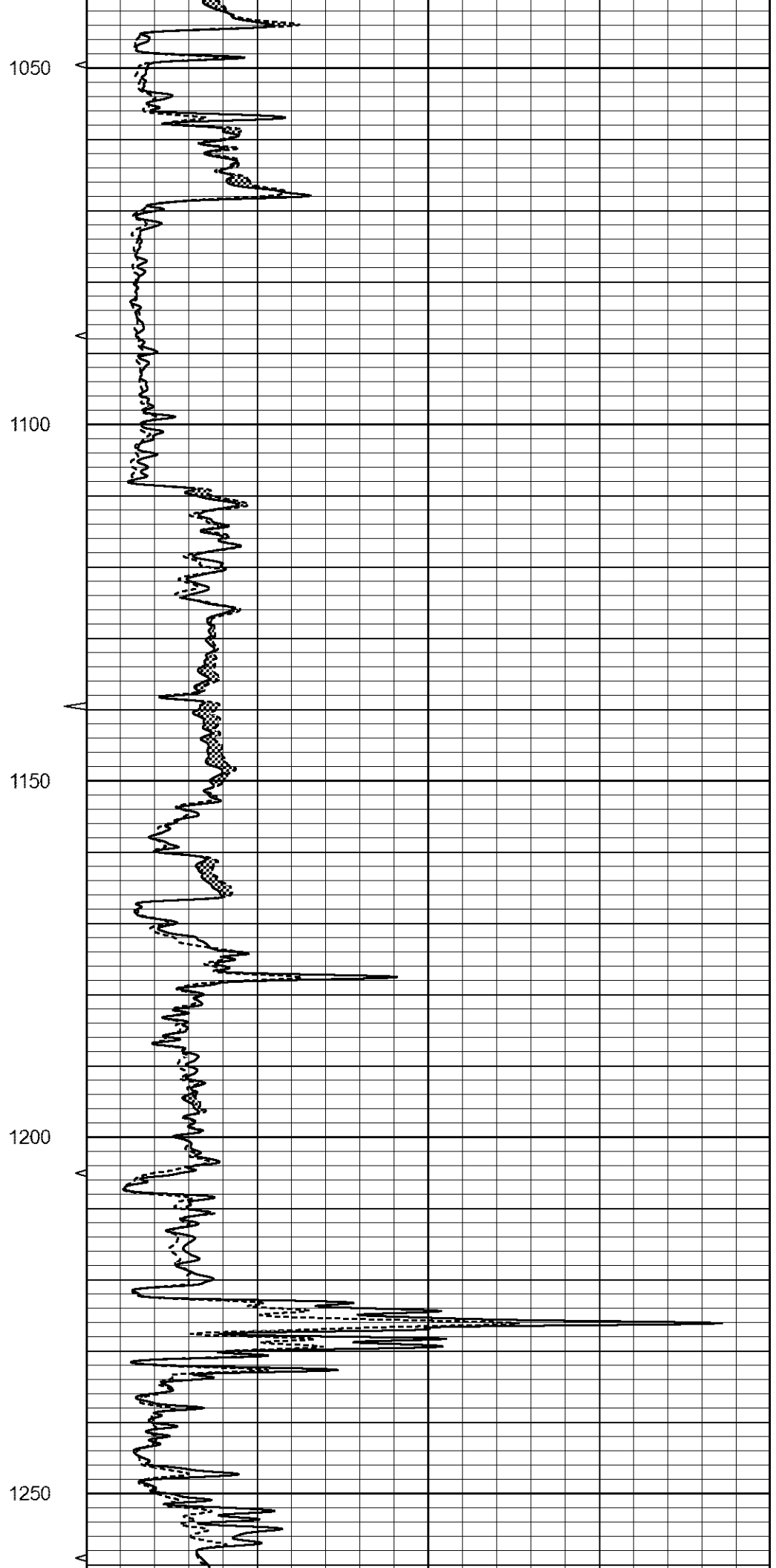
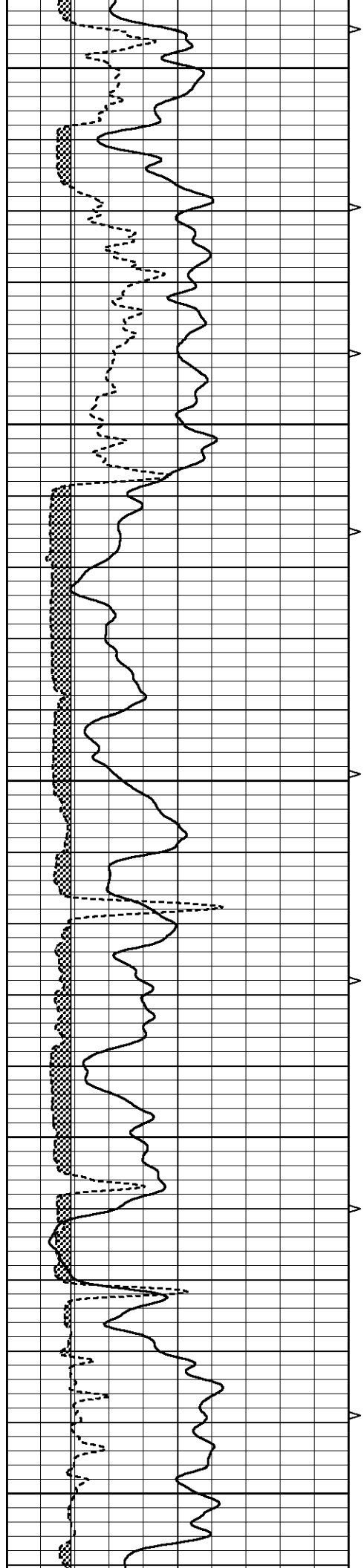
850

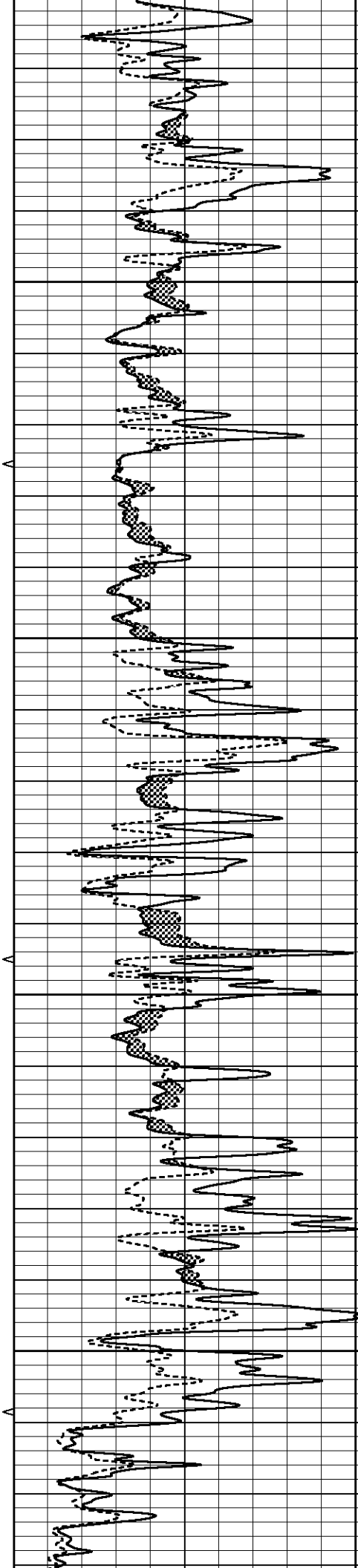
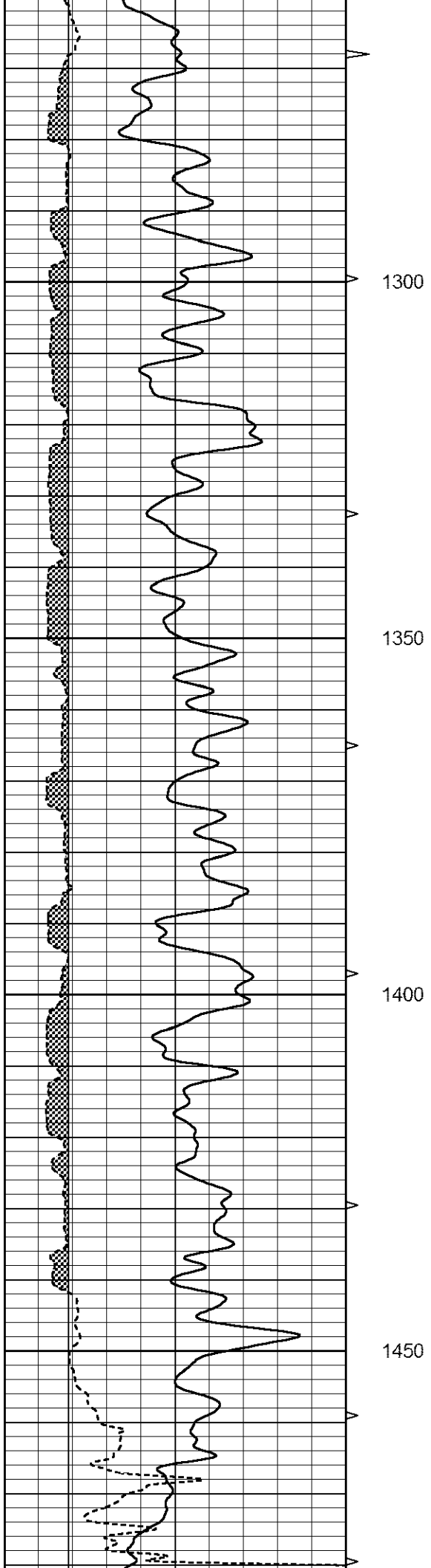
900

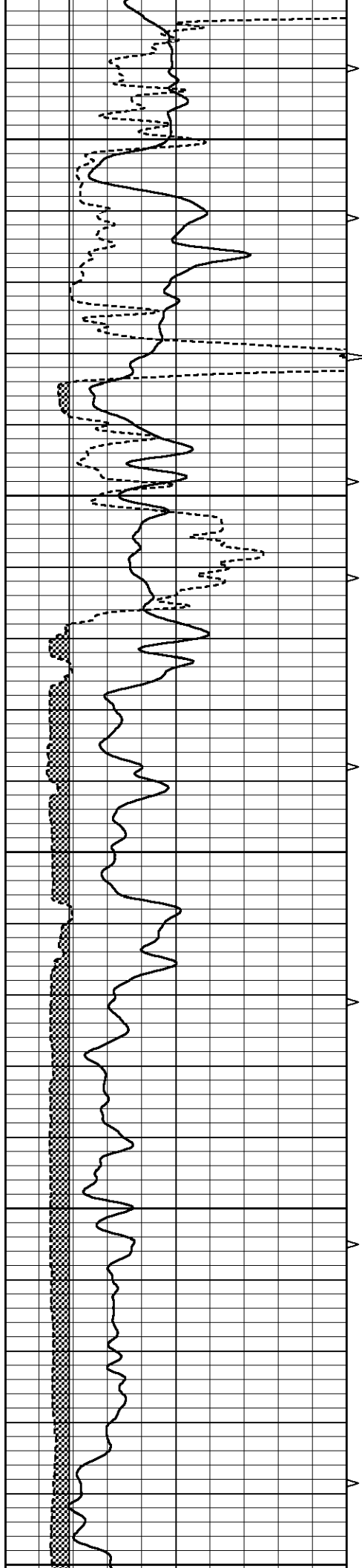
950

1000









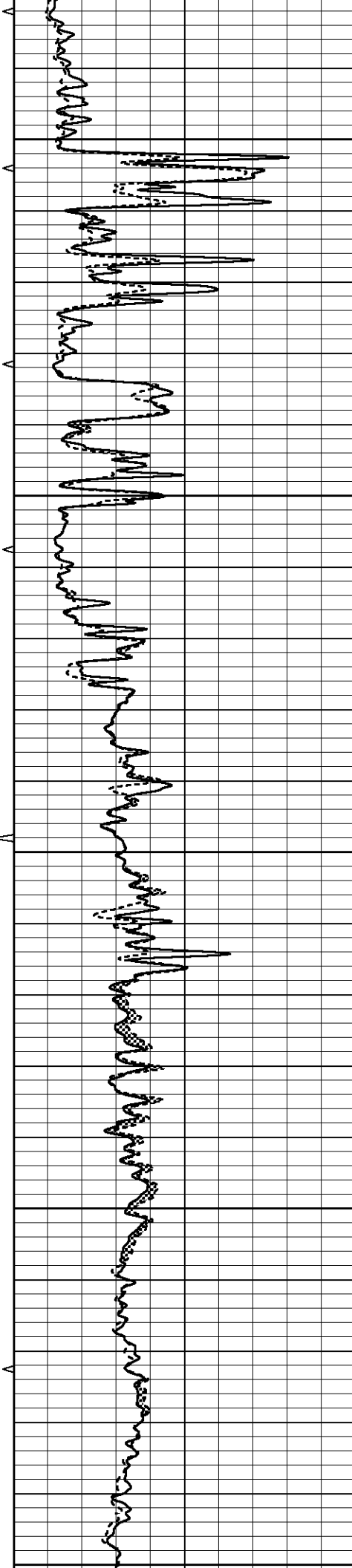
1500

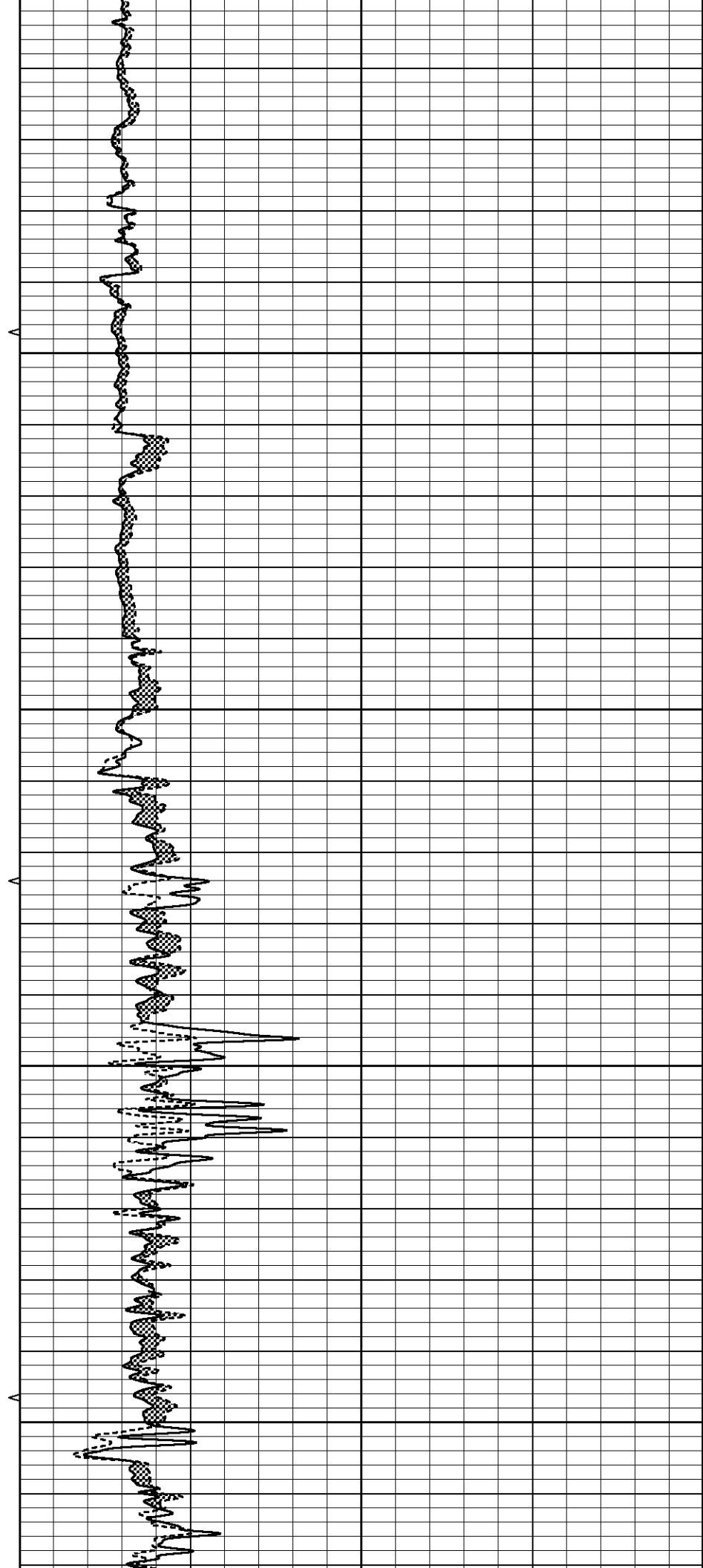
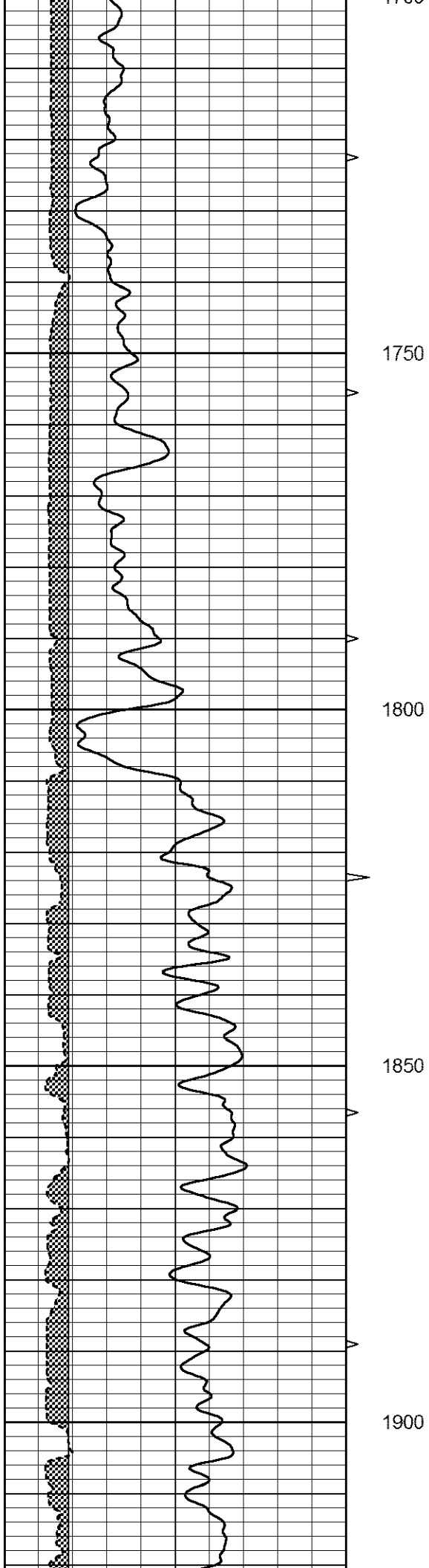
1550

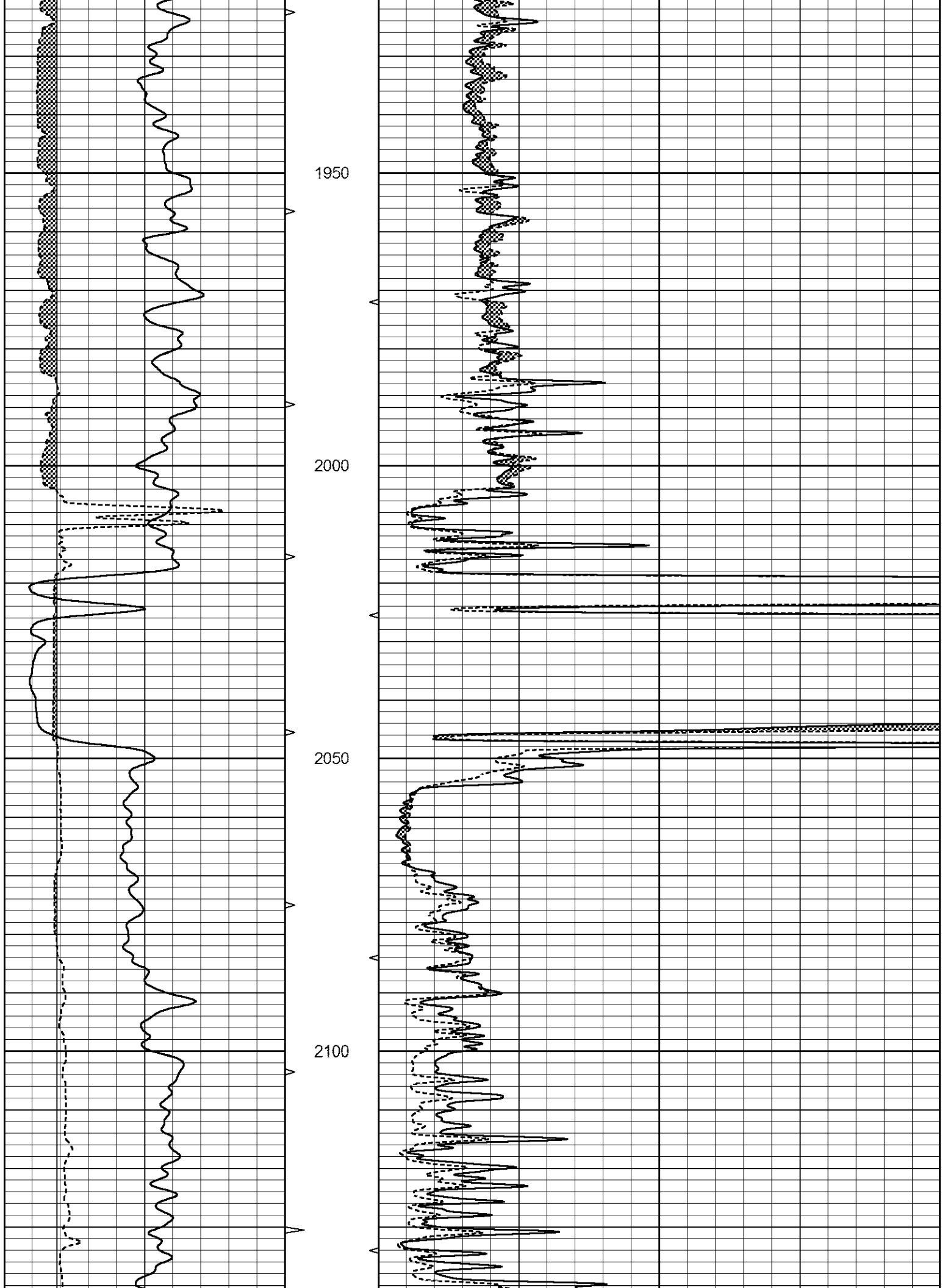
1600

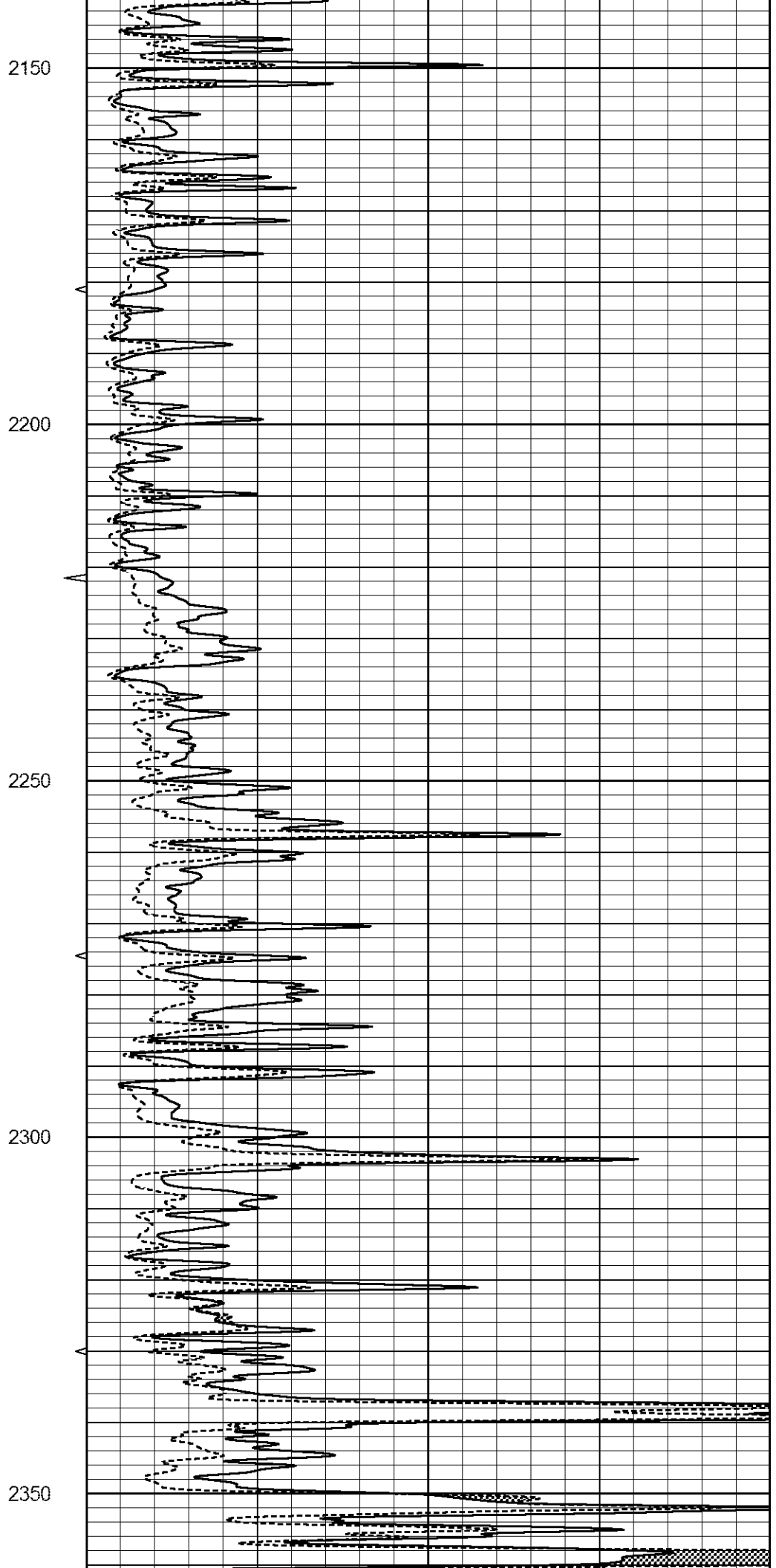
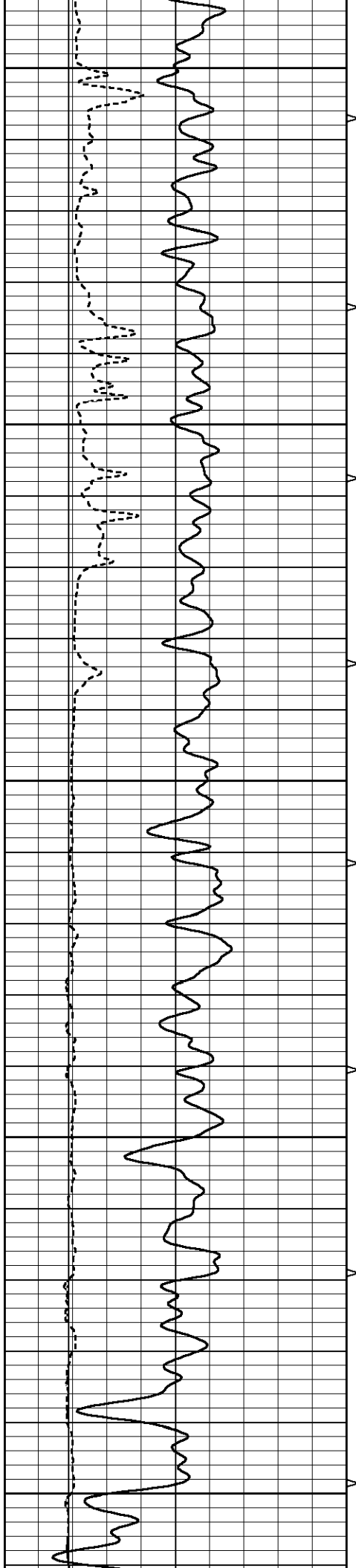
1650

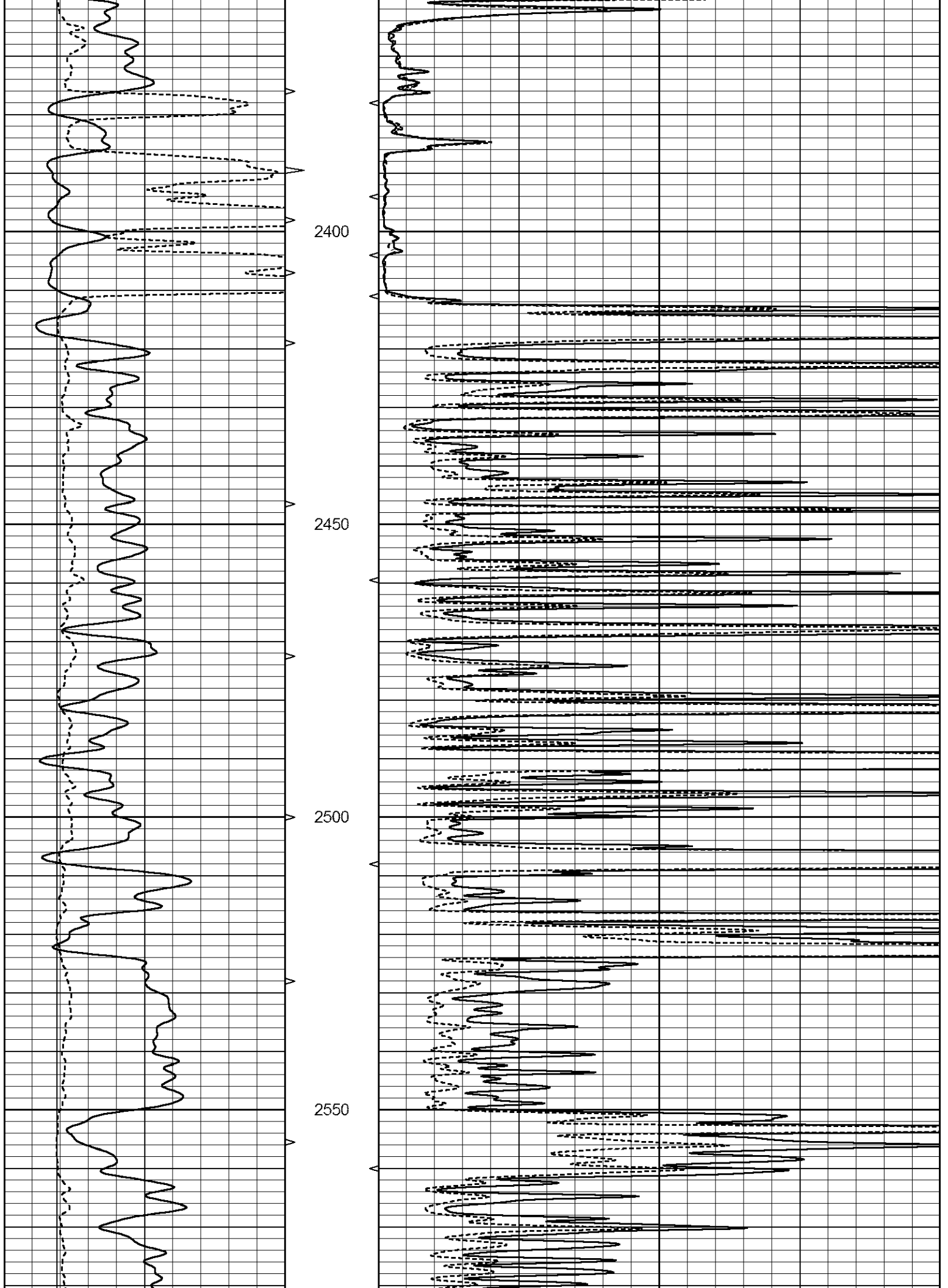
1700

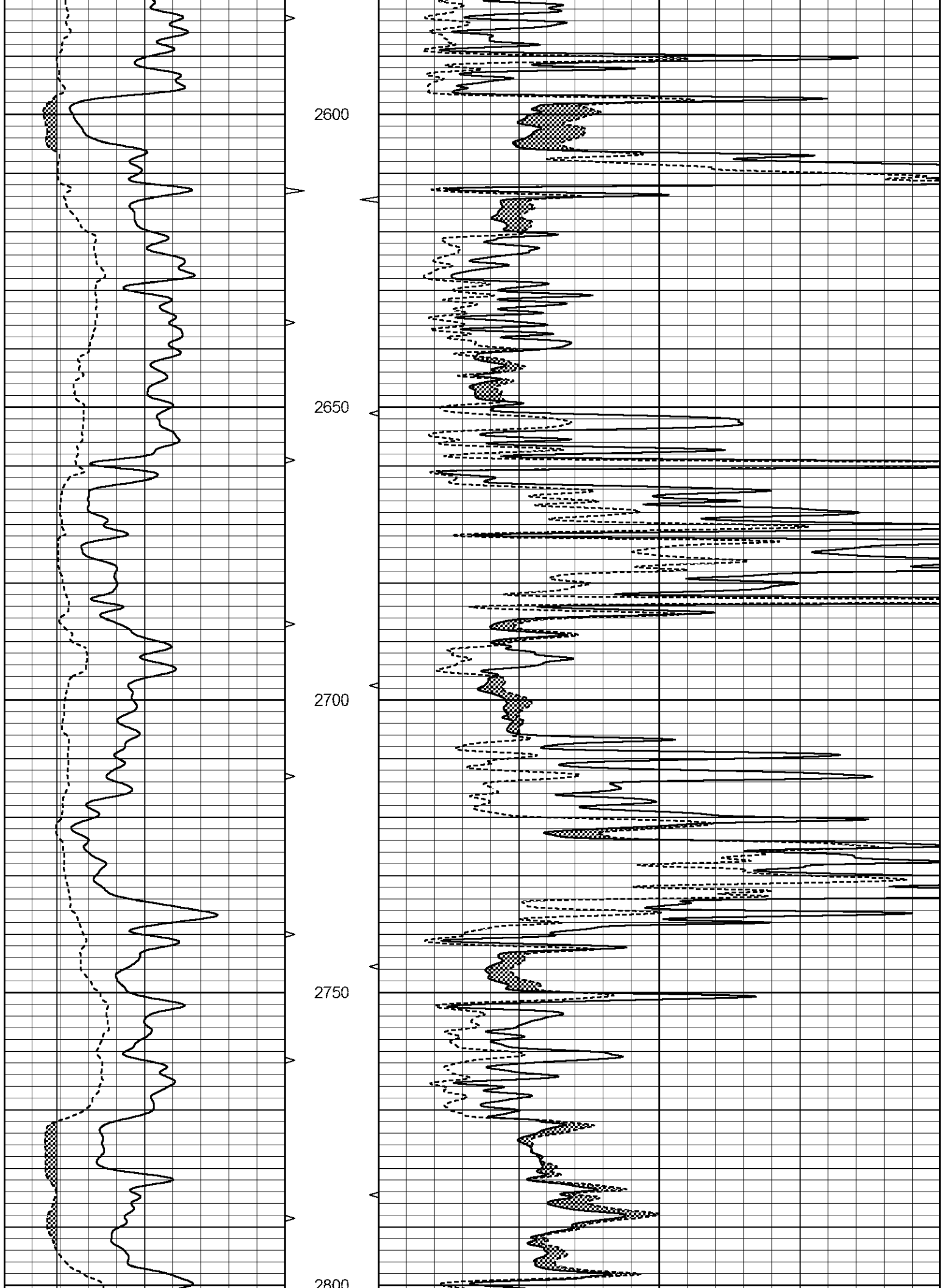


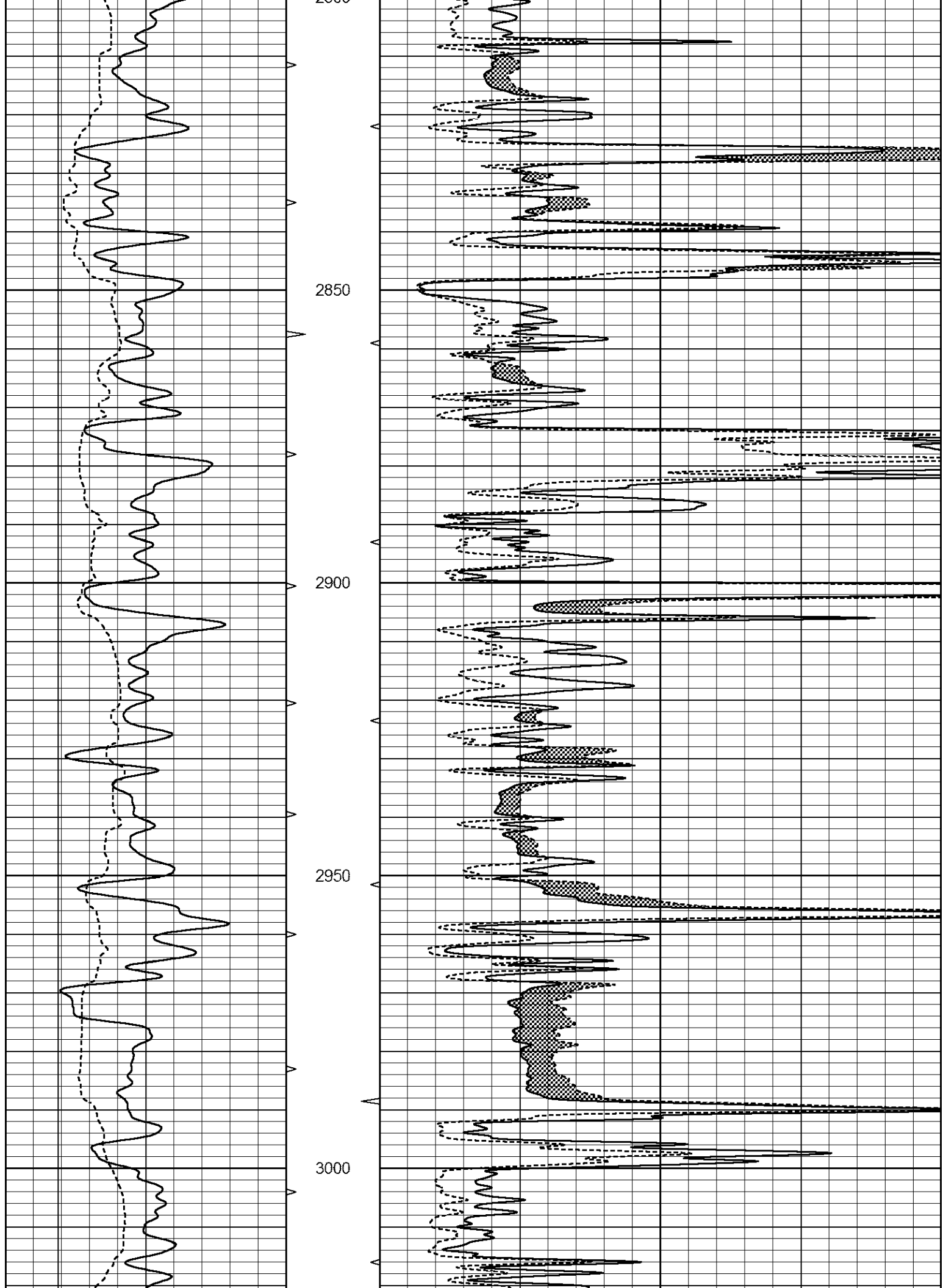


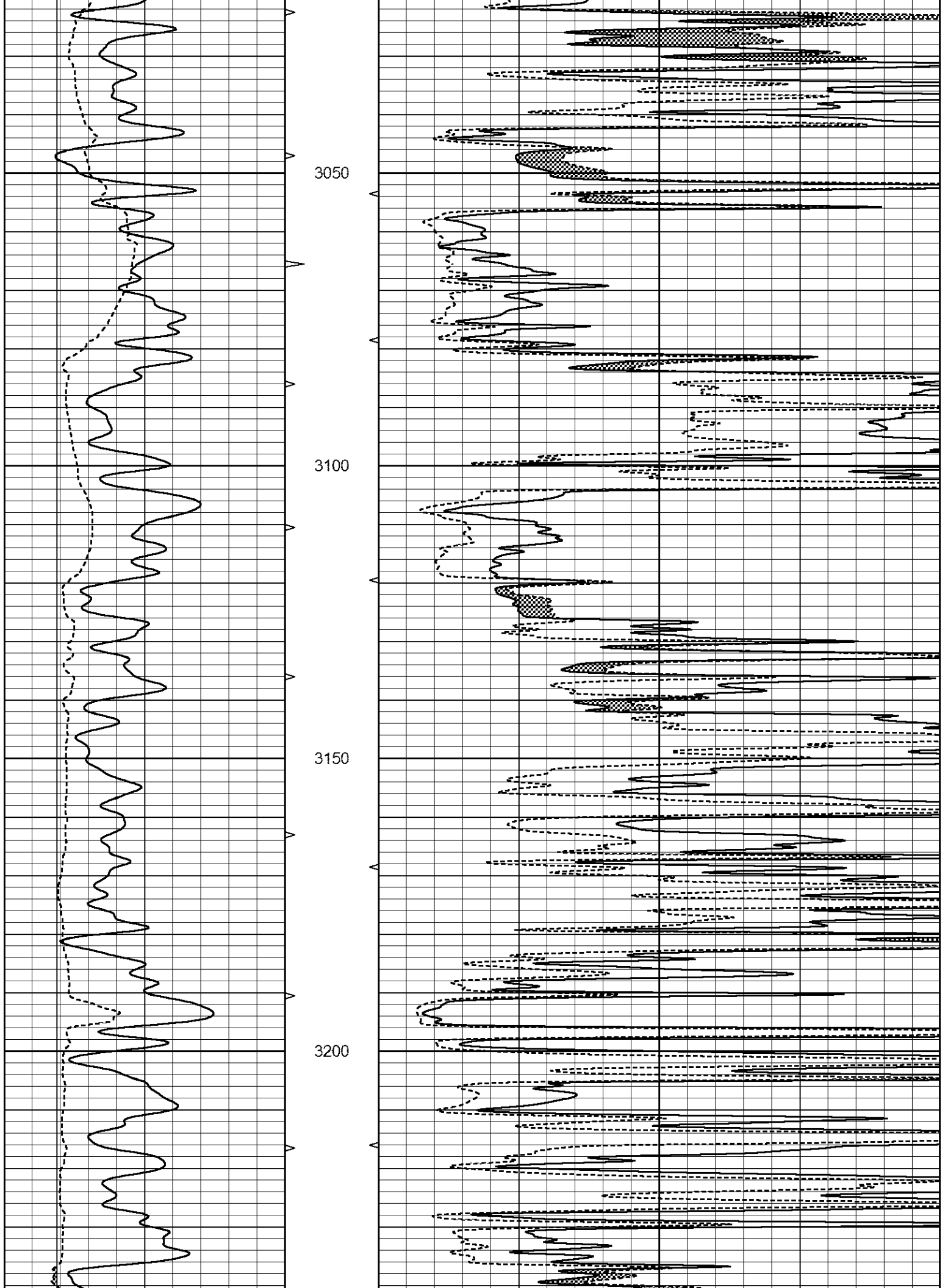


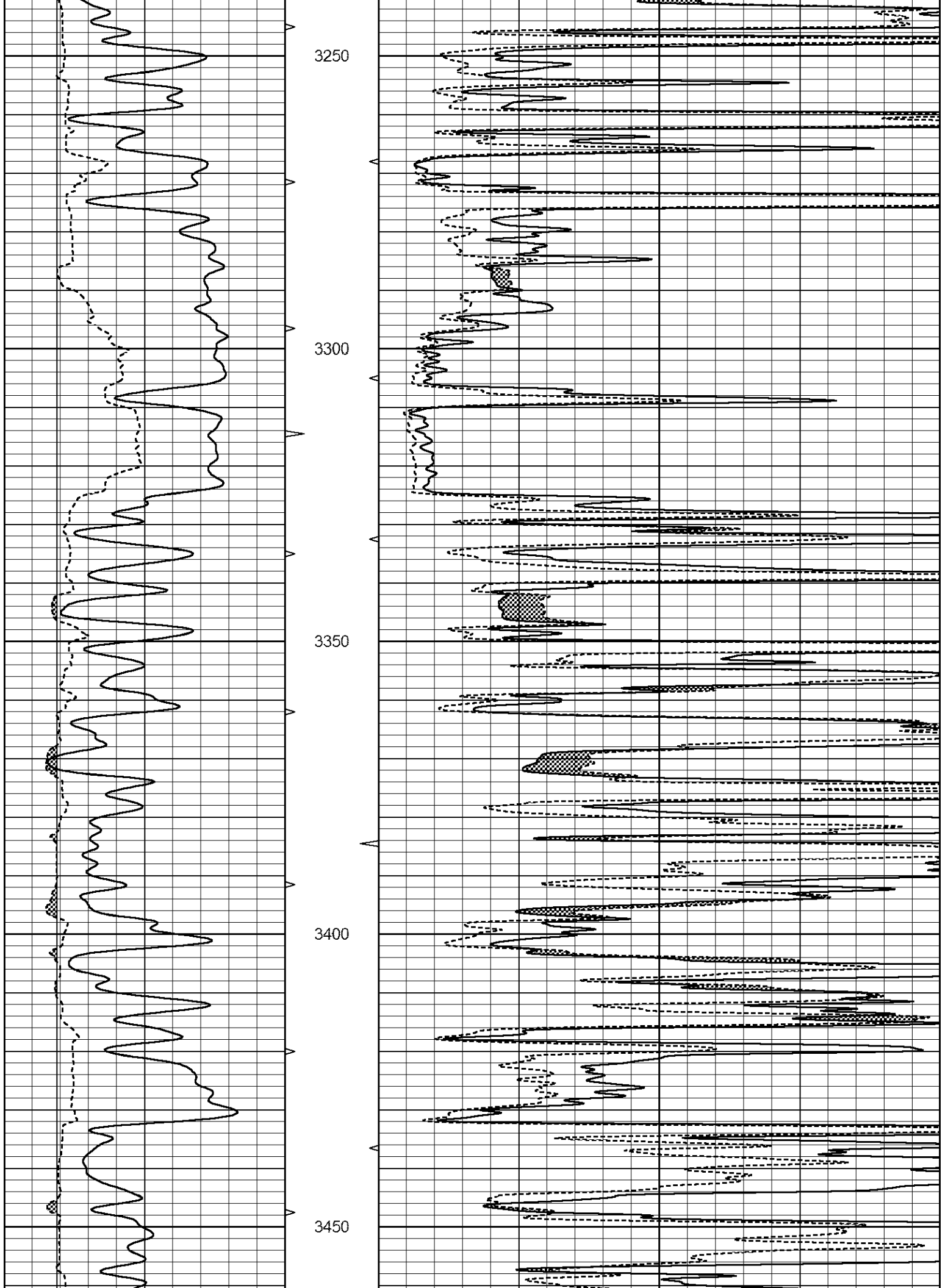




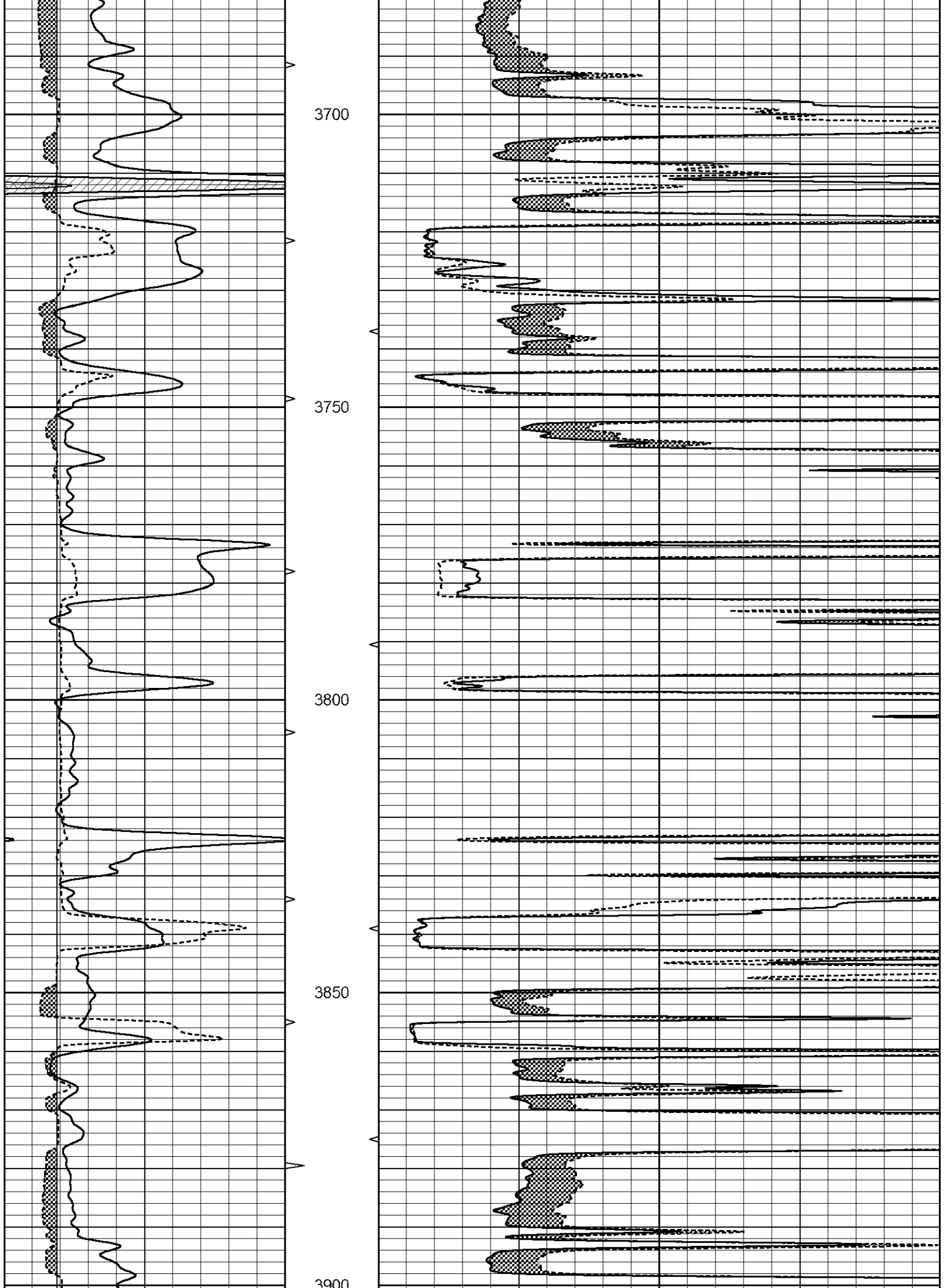


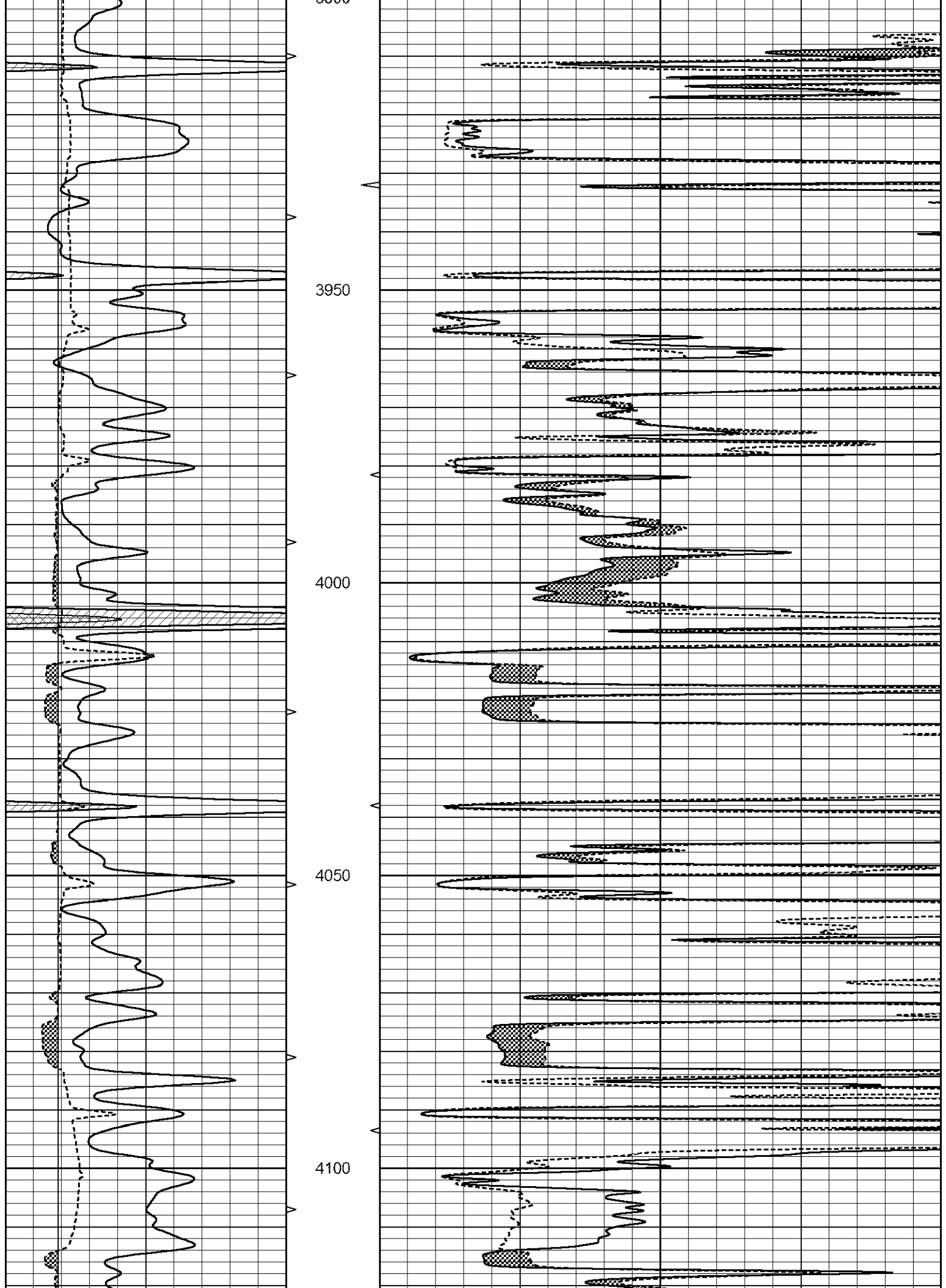


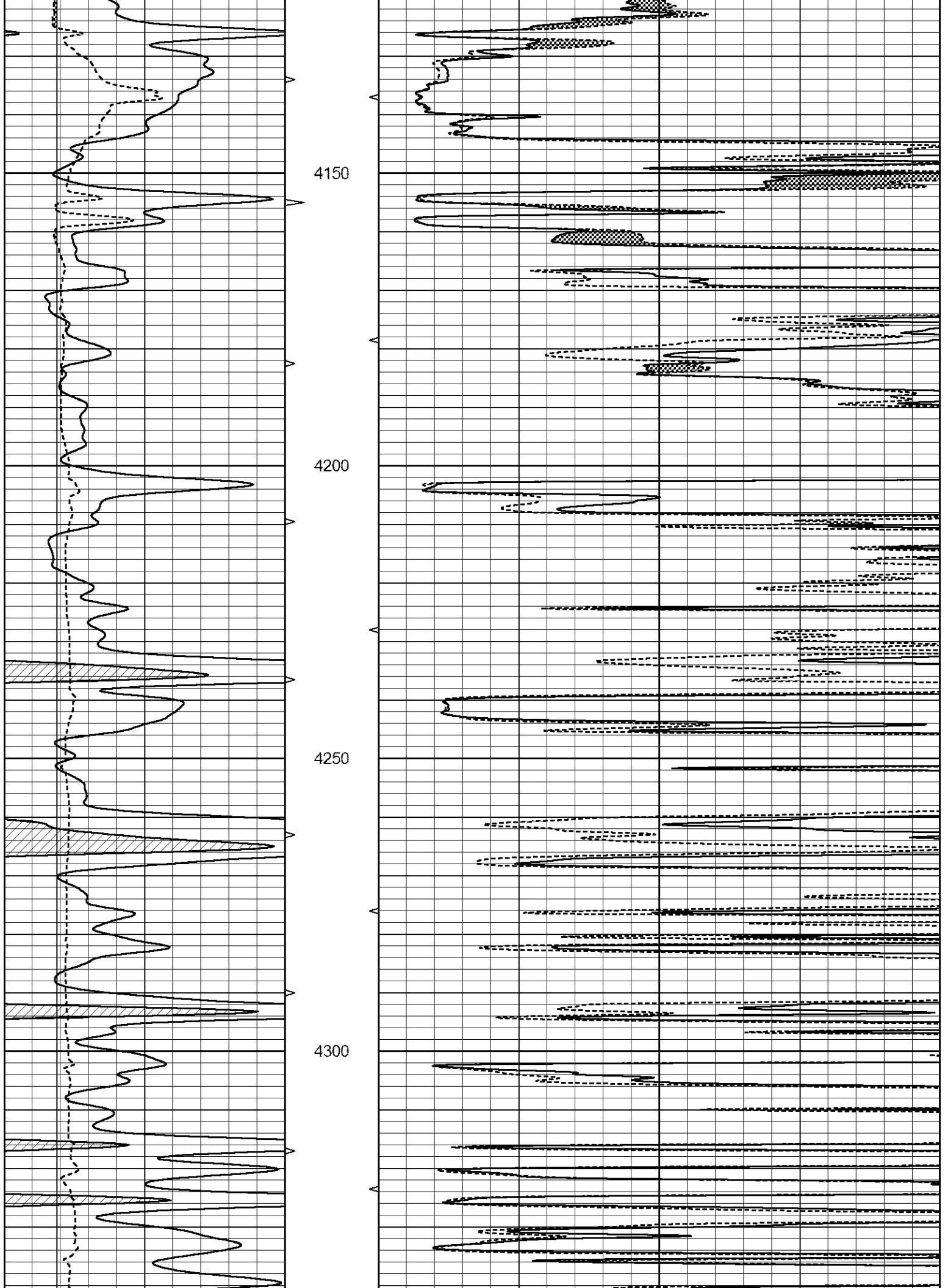


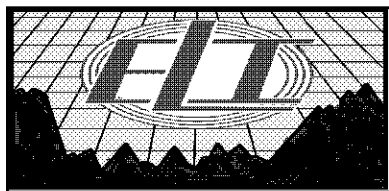
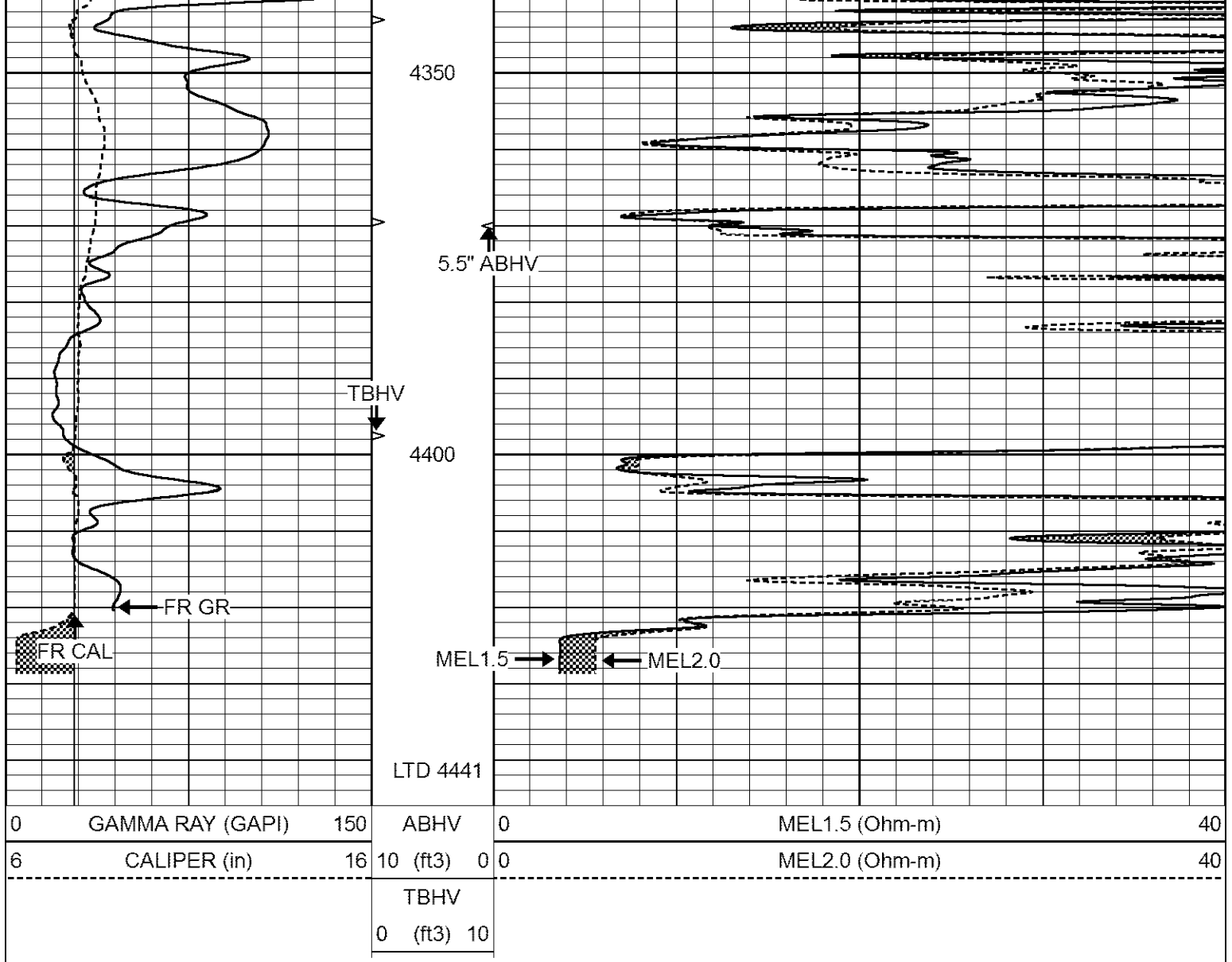








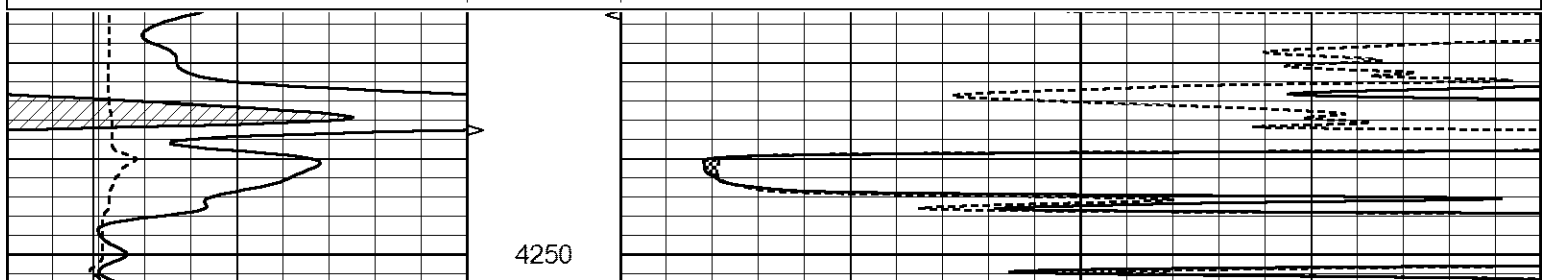


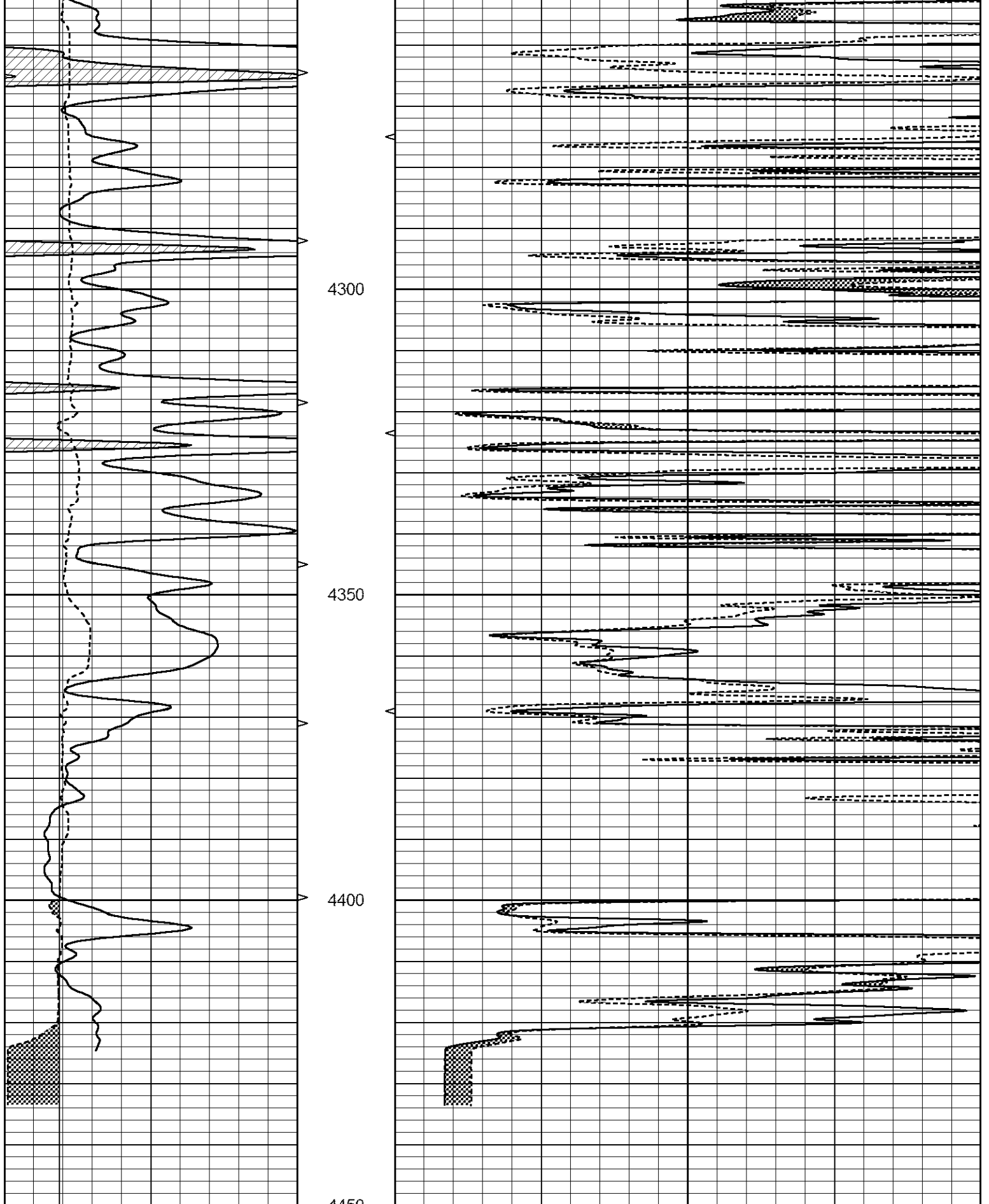


# REPEAT SECTION

Database File 7024pe.db  
 Dataset Pathname pass5.1  
 Presentation Format \_micro  
 Dataset Creation Thu Sep 29 04:04:10 2022  
 Charted by Depth in Feet scaled 1:240

0	GAMMA RAY (GAPI)	150	ABHV	0	MEL1.5 (Ohm-m)	40
6	CALIPER (in)	16	10 (ft3)	0 0	MEL2.0 (Ohm-m)	40
			TBHV			
			0 (ft3)	10		





0	GAMMA RAY (GAPI)	150	4450	0	MEL1.5 (Ohm-m)	40
6	CALIPER (in)	16	10 (ft3)	0 0	MEL2.0 (Ohm-m)	40
			TBHV			
			0 (ft3)	10		

Calibration Report

Database File 7024pe.db  
 Dataset Pathname pass6M  
 Dataset Creation Thu Sep 29 03:59:15 2022

MICRO\_USR Calibration Report

Serial Number:	070910	
Tool Model:	ProbeL	
Performed:	Wed Sep 21 00:40:51 2022	
Caliper Calibration:	Gain=7.212	Offset=1.750
References	Low Cal 8.000	High Cal 14.000
Readings	0.725	1.557
1.5" Calibration:	Gain=38.000	Offset=0.030
References	Low Cal 0.000	High Cal 20.000
Readings	0.004	1.335
2" Calibration:	Gain=45.000	Offset=0.000
References	Low Cal 0.000	High Cal 20.000
Readings	0.004	1.029

Microlog Calibration Report

Serial-Model:	070910-ProbeL
Performed:	(Not Performed)

	Readings			References			Results	
	Zero	Cal		Zero	Cal		m	b
Normal	0.0000	1.0000	V	0.0000	1.0000	Ohm-m	1.0000	0.0000
Inverse	0.0000	1.0000	V	0.0000	1.0000	Ohm-m	1.0000	0.0000
Caliper	0.0000	1.0000	V	0.0000	1.0000	in	1.0000	0.0000

Gamma Ray Calibration Report

Serial Number:	070558	
Tool Model:	Probe1	
Performed:	Sat Jul 02 05:55:58 2022	
Calibrator Value:	1.0	GAPI
Background Reading:	0.0	cps
Calibrator Reading:	1.0	cps
Sensitivity:	0.2600	GAPI/cps