



MICRO LOG

Company PALOMINO PETROLEUM, INC.
 Well FOLLOW THAT DREAM #1
 Field WILDCAT
 County LANE State KANSAS

Location: API #: 15-101-22678-0000
 1948' FNL & 472' FEL
 SW - NE - SE - NE
 SEC 11 TWP 17S RGE 27W
 Permanent Datum GROUND LEVEL Elevation 2605
 Log Measured From KELLY BUSHING 5' A.G.L
 Drilling Measured From KELLY BUSHING
 Other Services CDL/CNL DIL
 Elevation K.B. 2610 D.F. 2608 G.L. 2605

Date	8/9/22
Run Number	TWO
Depth Driller	4600
Depth Logger	4602
Bottom Logged Interval	4600
Top Log Interval	3400
Casing Driller	8 5/8" @ 219
Casing Logger	219
Bit Size	7 7/8
Type Fluid in Hole	CHEMICAL MUD
Density / Viscosity	9.0/59
PH / Fluid Loss	10.5/5.8
Source of Sample	FLOWLINE
Rm @ Meas. Temp	1.40 @ 70F
Rmt @ Meas. Temp	1.05 @ 70F
Rmc @ Meas. Temp	1.68 @ 70F
Source of Rmf / Rmc	MEASUREMENT
Rm @ BHT	903 @ 122F
Time Circulation Stopped	4 HOURS
Time Logger on Bottom	10:00 A.M.
Maximum Recorded Temperature	122F
Equipment Number	3802
Location	HAYS, KANSAS
Recorded By	COLE ROBBEN
Witnessed By	KIM SHOEMAKER

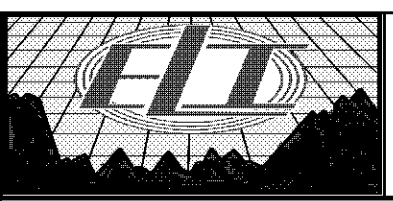
<<< Fold Here >>>

All interpretations are opinions based on inferences from electrical or other measurements and we cannot and do not guarantee the accuracy or correctness of any interpretation, and we shall not, except in the case of gross or willful negligence on our part, be liable or responsible for any loss, costs, damages, or expenses incurred or sustained by anyone resulting from any interpretation made by any of our officers, agents or employees. These interpretations are also subject to our general terms and conditions set out in our current Price Schedule.

Comments

THANK YOU FOR USING ELI WIRELINE SERVICES, HAYS, KS. (785) 628-6395

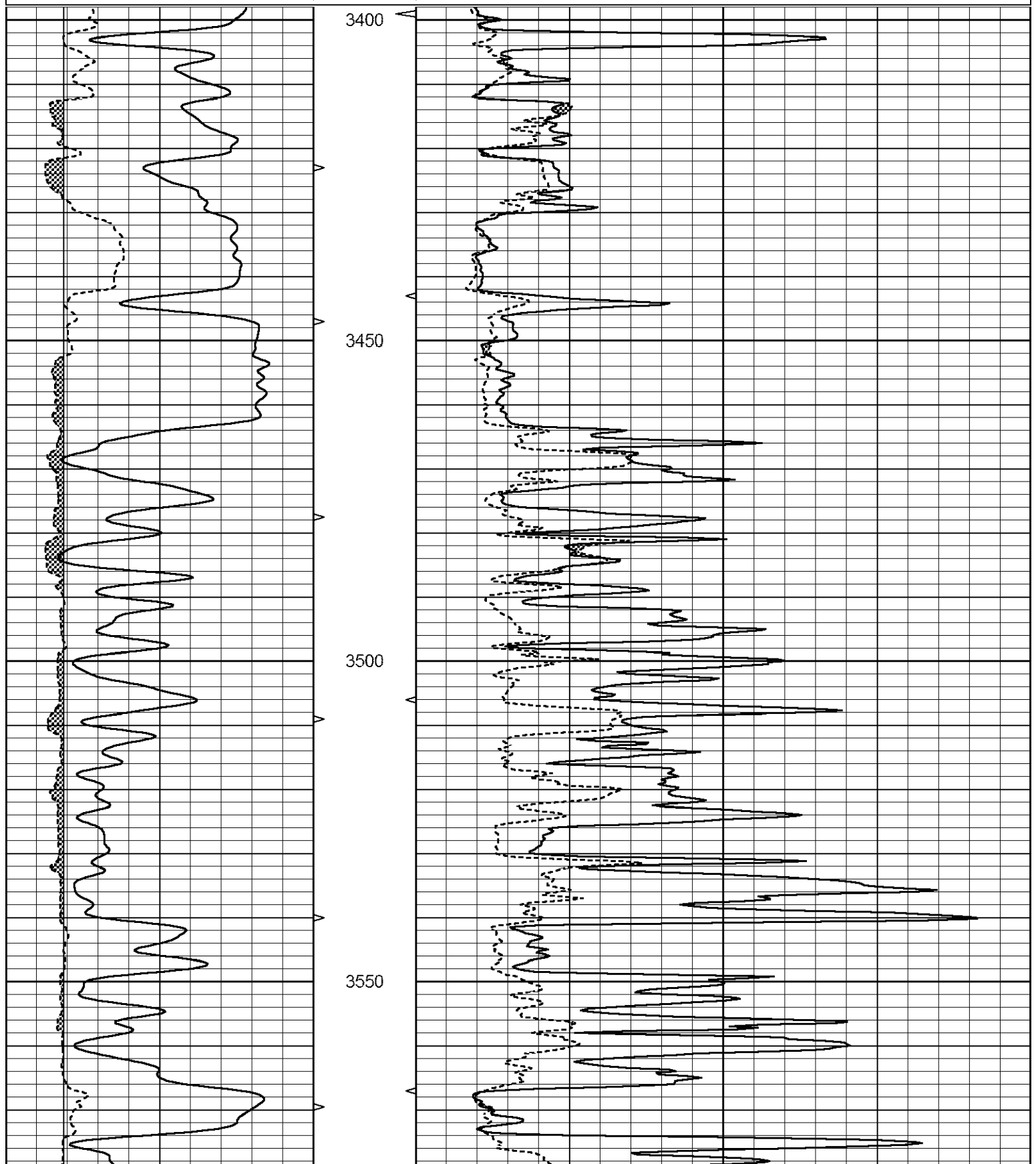
DIRECTIONS:
 FROM UTICA, KANSAS GO 5 MILES WEST ON HIGHWAY 4 TO WICHITA ROAD, THEN
 2 MILES SOUTH TO 240 ROAD, 1/2 MILE WEST, THEN FOLLOW TRAIL SOUTH
 1.8 MILES TO LOCATION

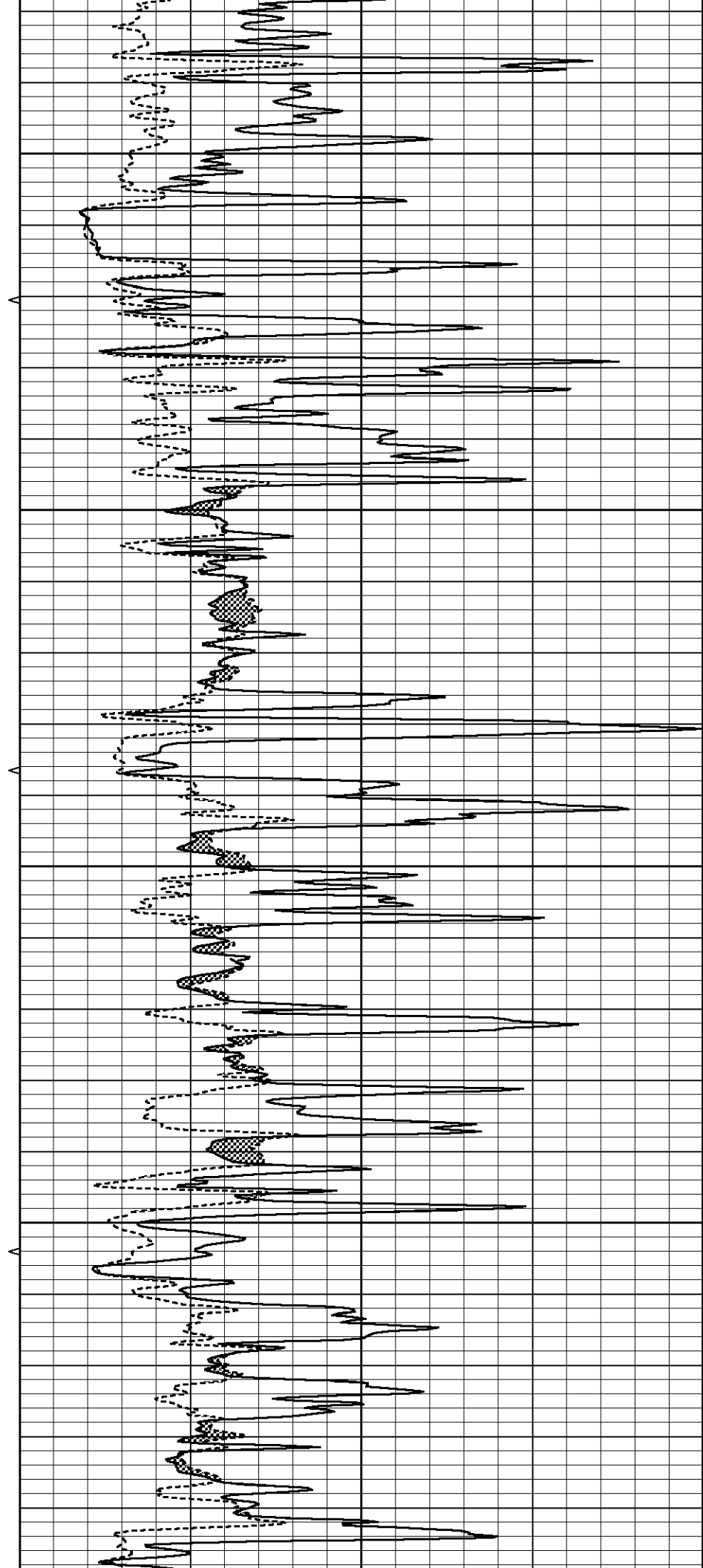
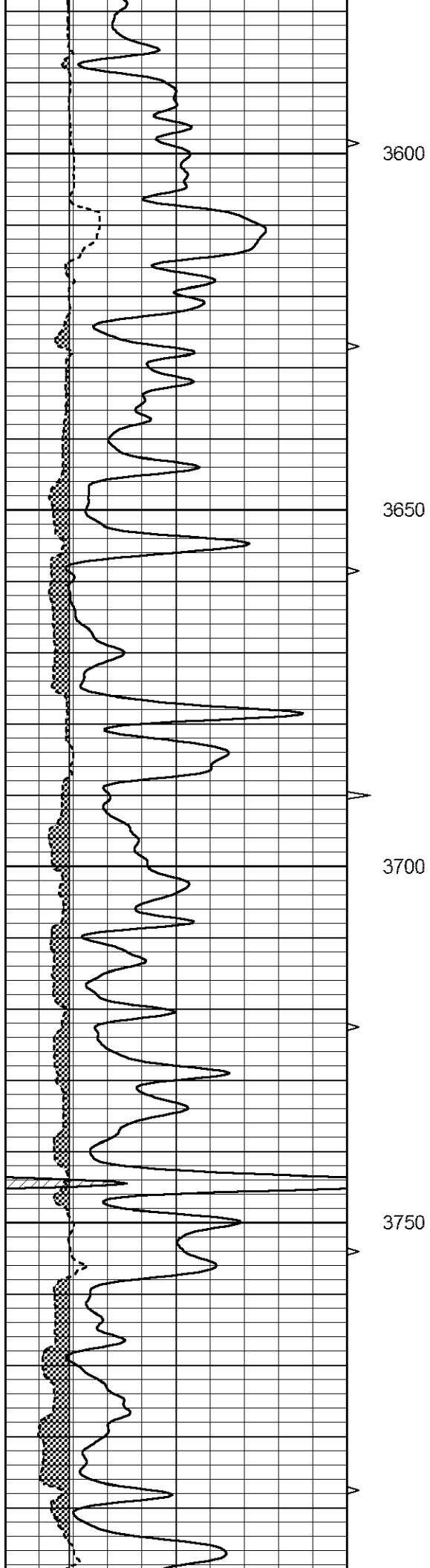


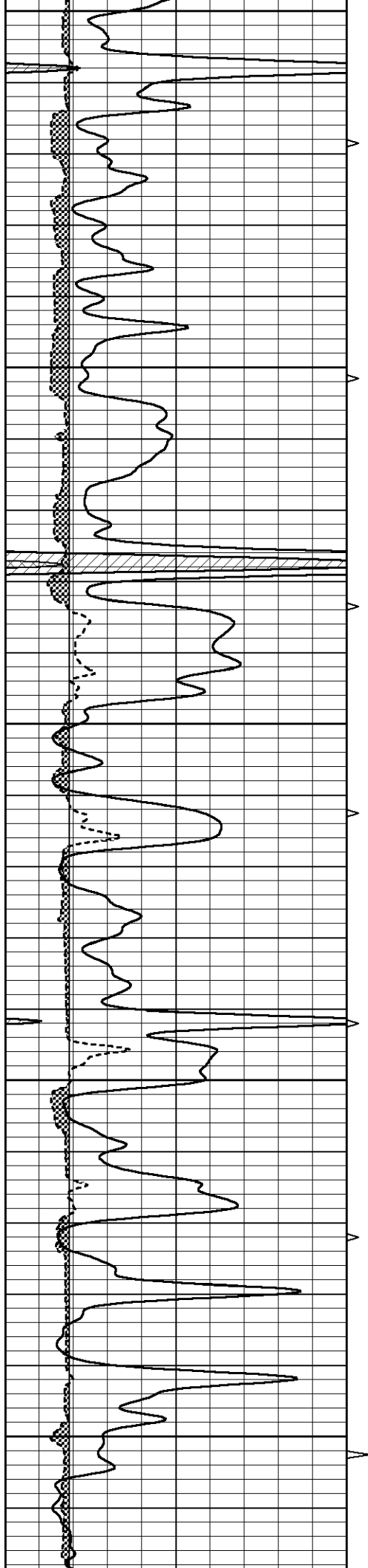
MAIN SECTION

Database File 6768ddn.db
 Dataset Pathname pass9.2
 Presentation Format _micro
 Dataset Creation Tue Aug 09 11:23:41 2022
 Charted by Depth in Feet scaled 1:240

0	GAMMA RAY (GAPI)	150	ABHV	0	MEL1.5 (Ohm-m)	40
6	CALIPER (in)	16	10 (ft3)	0 0	MEL2.0 (Ohm-m)	40
			TBHV			
			0 (ft3)	10		







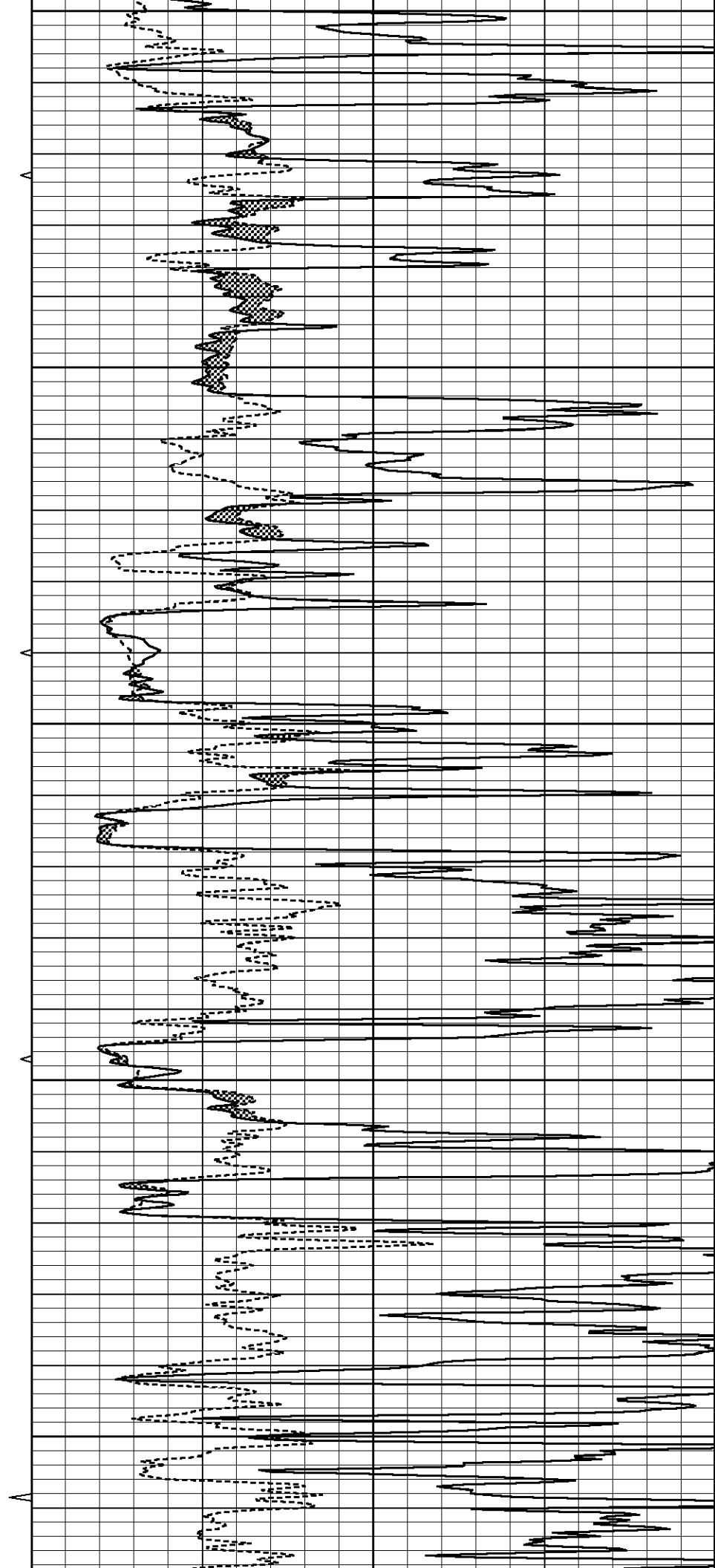
3800

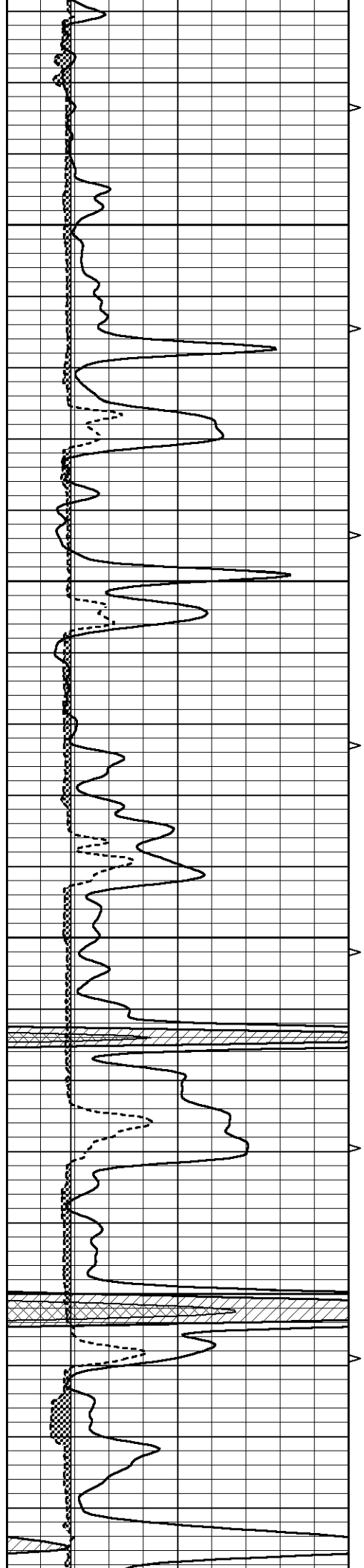
3850

3900

3950

4000



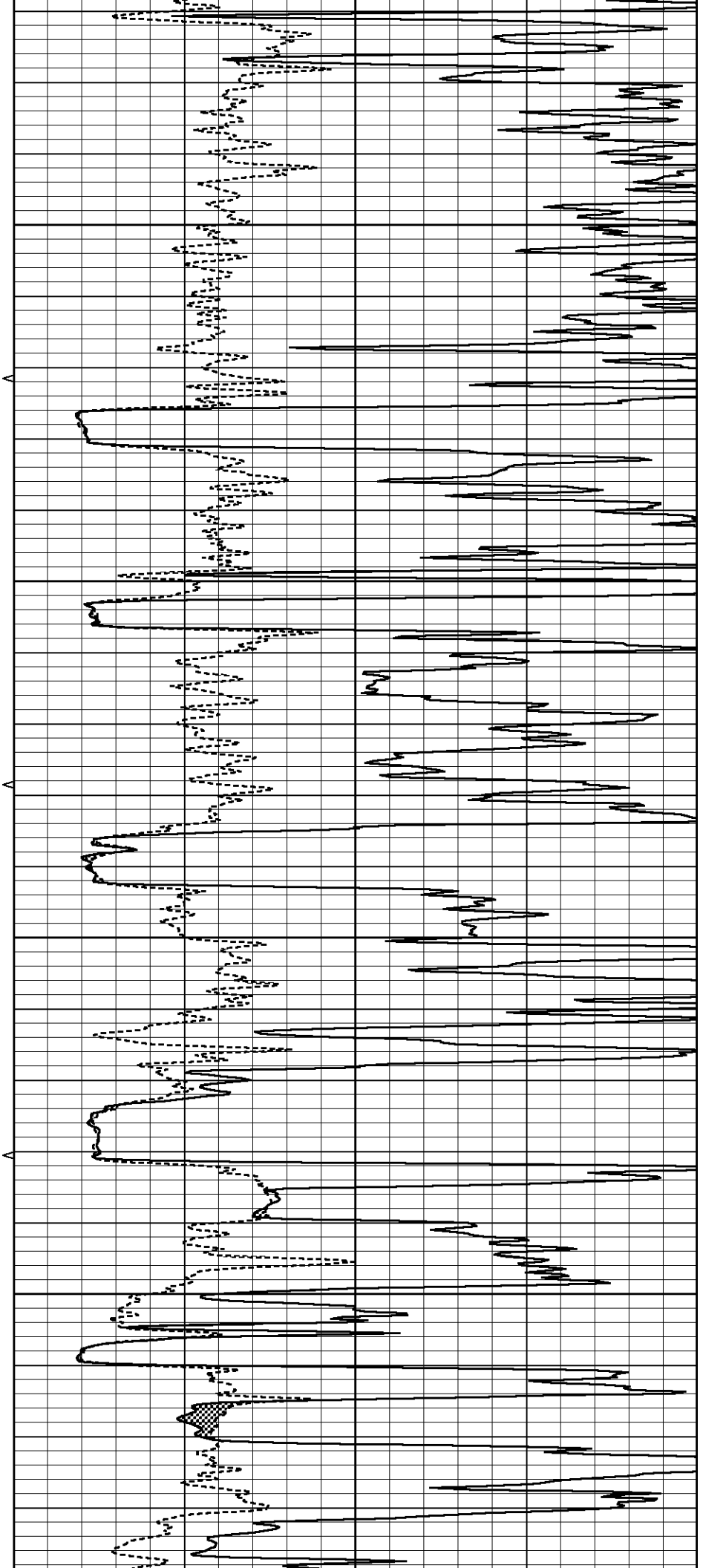


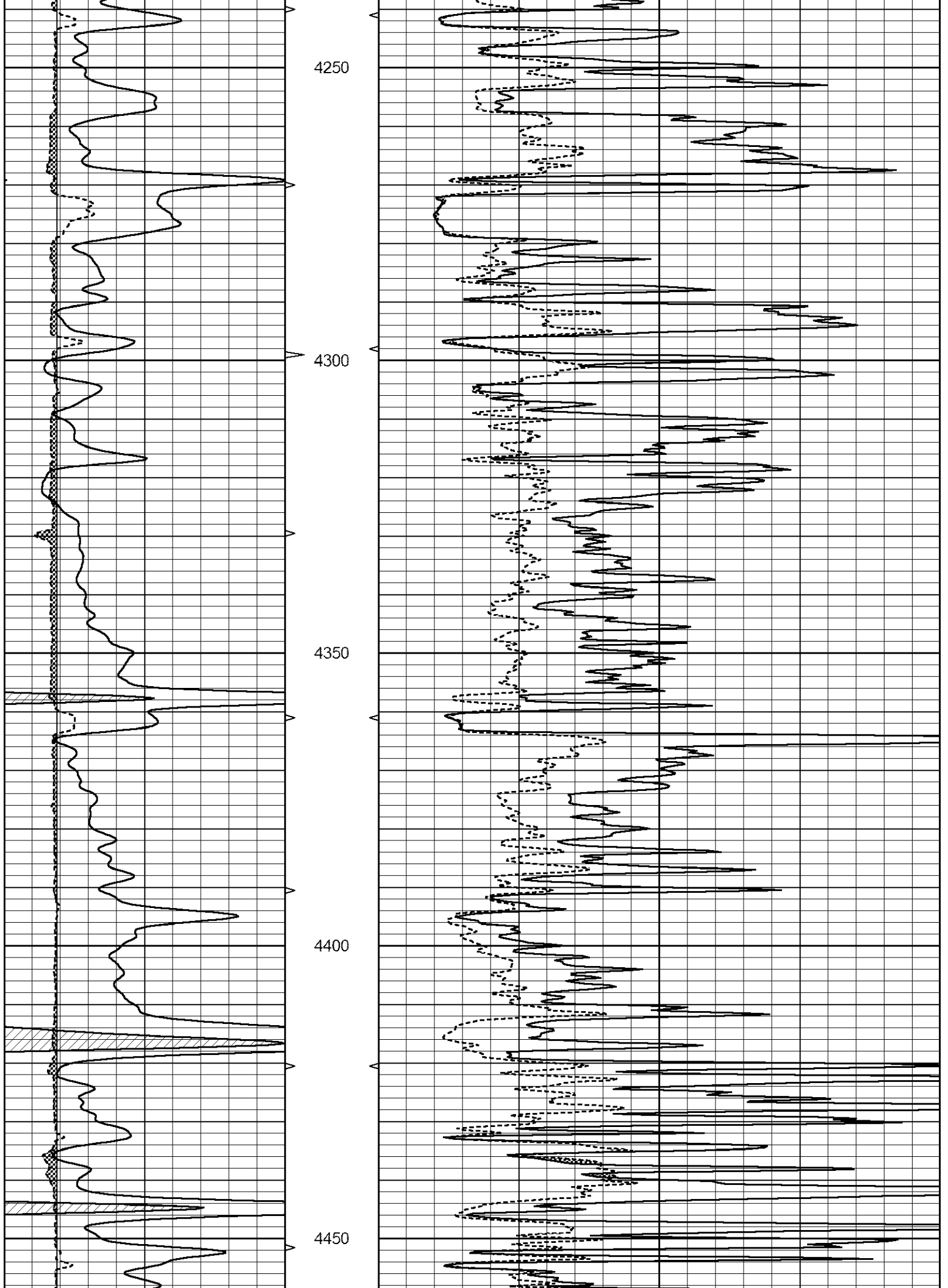
4050

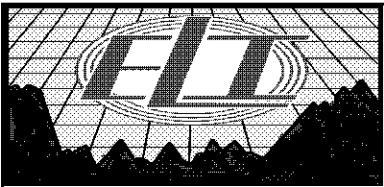
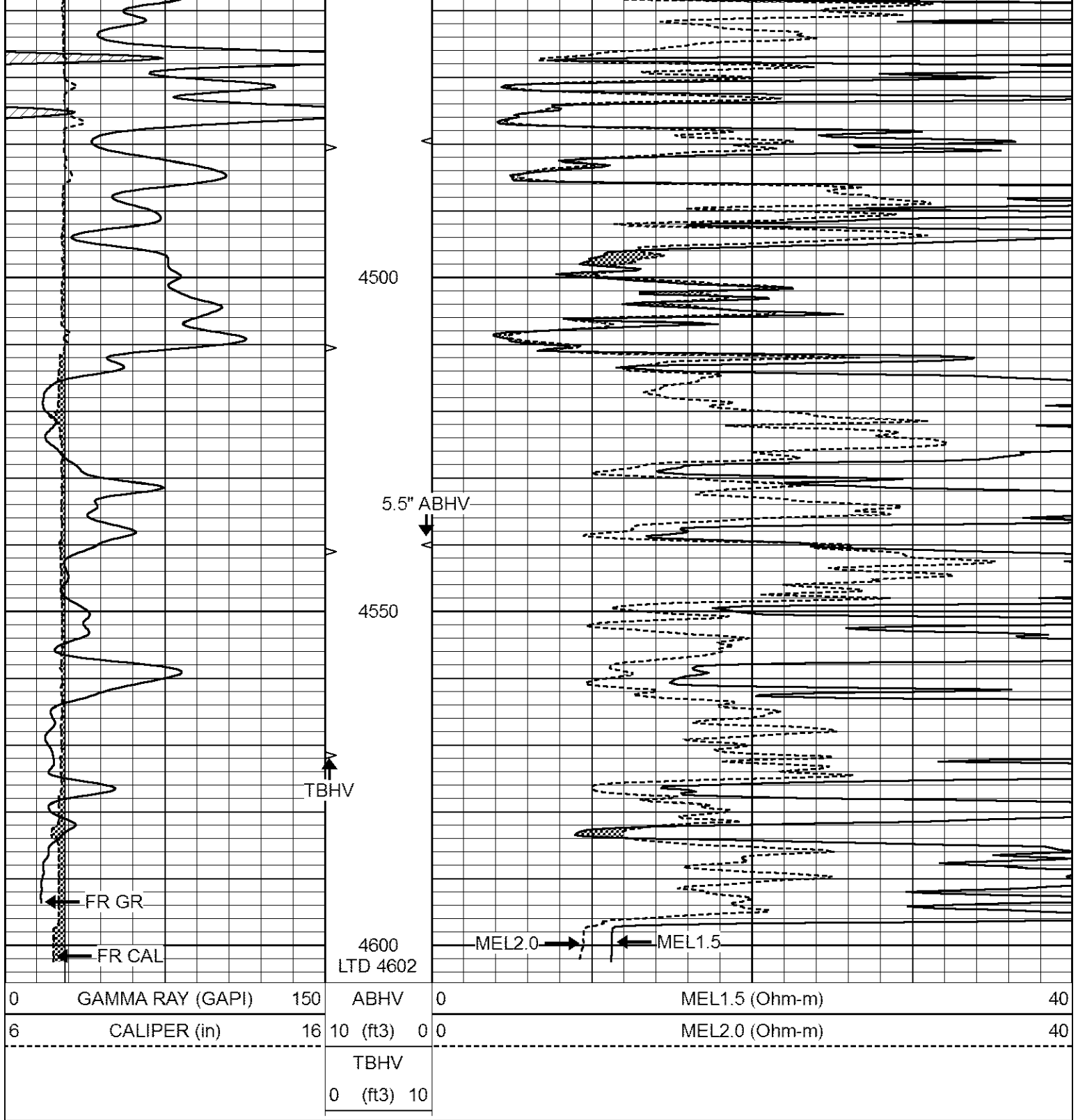
4100

4150

4200



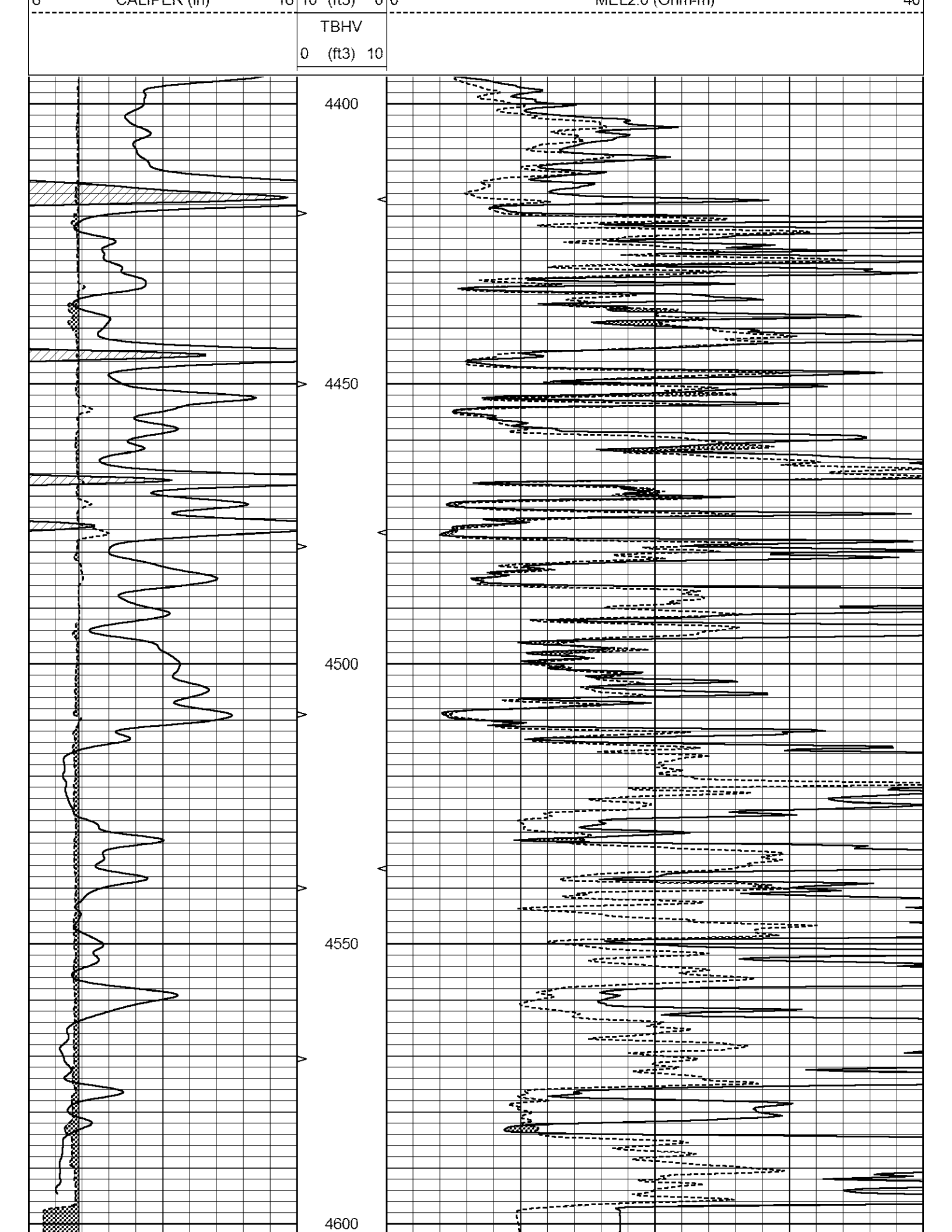




REPEAT SECTION

Database File 6768ddn.db
 Dataset Pathname pass8.1
 Presentation Format _micro
 Dataset Creation Tue Aug 09 11:16:29 2022
 Charted by Depth in Feet scaled 1:240

0	GAMMA RAY (GAPI)	150	ABHV	0	MEL1.5 (Ohm-m)	40
6	CALIPER (in)	16	10 (ft3)	0 0	MEL2.0 (Ohm-m)	40



0	GAMMA RAY (GAPI)	150	ABHV	0	MEL1.5 (Ohm-m)	40
6	CALIPER (in)	16	10 (ft3) 0	0	MEL2.0 (Ohm-m)	40
			TBHV			
			0 (ft3) 10			

Calibration Report

Database File 6768ddn.db
 Dataset Pathname pass9.2
 Dataset Creation Tue Aug 09 11:23:41 2022

MICRO_USR Calibration Report

Serial Number: 070910
 Tool Model: ProbeL
 Performed: Tue Aug 09 02:55:53 2022

Caliper Calibration: Gain=7.212 Offset=2.300

References	Low Cal	High Cal
Readings	8.000	14.000
	0.725	1.557

1.5" Calibration: Gain=30.000 Offset=2.100

References	Low Cal	High Cal
Readings	0.000	20.000
	0.004	1.335

2" Calibration: Gain=60.000 Offset=1.200

References	Low Cal	High Cal
Readings	0.000	20.000
	0.004	1.029

Microlog Calibration Report

Serial-Model: 070910-ProbeL
 Performed: (Not Performed)

	Readings			References			Results	
	Zero	Cal		Zero	Cal		m	b
Normal	0.0000	1.0000	V	0.0000	1.0000	Ohm-m	1.0000	0.0000
Inverse	0.0000	1.0000	V	0.0000	1.0000	Ohm-m	1.0000	0.0000
Caliper	0.0000	1.0000	V	0.0000	1.0000	in	1.0000	0.0000

Gamma Ray Calibration Report

Serial Number: 070558
 Tool Model: Probe1
 Performed: Sat Jul 02 05:55:58 2022

Calibrator Value: 1.0 GAPI

Background Reading: 0.0 cps
 Calibrator Reading: 1.0 cps

Sensitivity: 0.2600 GAPI/cps