

MICRO
LOG



Company PALOMINO PETROLEUM, INC.
Well #1 EHMKE TRUST
Field WILDCAT
County LANE State KANSAS

Location: 991' FSL & 1256' FWL
NE - NE - SW - SW
SEC 23 TWP 19S RGE 29W
Permanent Datum GROUND LEVEL Elevation 2837
Log Measured From KELLY BUSHING 5' A.G.L.
Drilling Measured From KELLY BUSHING
Other Services
CDL/CNL
DIL
Elevation
K.B. 2842
D.F. 2840
G.L. 2837

Date	10/8/22
Run Number	TWO
Depth Driller	4740
Depth Logger	4746
Bottom Logged Interval	4744
Top Log Interval	3500
Casing Driller	8 5/8"@219'
Casing Logger	219
Bit Size	7 7/8"
Type Fluid in Hole	CHEMICAL MUD
Density / Viscosity	9.1/61
pH / Fluid Loss	9.5/9.6
Source of Sample	FLOWLINE
Rm @ Meas. Temp	1.50@50F
Rmf @ Meas. Temp	1.13@50F
Rmc @ Meas. Temp	1.80@50F
Source of Rmf / Rmc	MEASUREMENT
Rm @ BHT	.610@123F
Time Circulation Stopped	4 HOURS
Time Logger on Bottom	3:30 A.M.
Maximum Recorded Temperature	123F
Equipment Number	922339
Location	HAYS, KANSAS
Recorded By	JEFF LUEBBERS
Witnessed By	KIM SHOEMAKER

<<< Fold Here >>>

All interpretations are opinions based on inferences from electrical or other measurements and we cannot and do not guarantee the accuracy or correctness of any interpretation, and we shall not, except in the case of gross or willful negligence on our part, be liable or responsible for any loss, costs, damages, or expenses incurred or sustained by anyone resulting from any interpretation made by any of our officers, agents or employees. These interpretations are also subject to our general terms and conditions set out in our current Price Schedule.

15-101-22680-0000 Comments

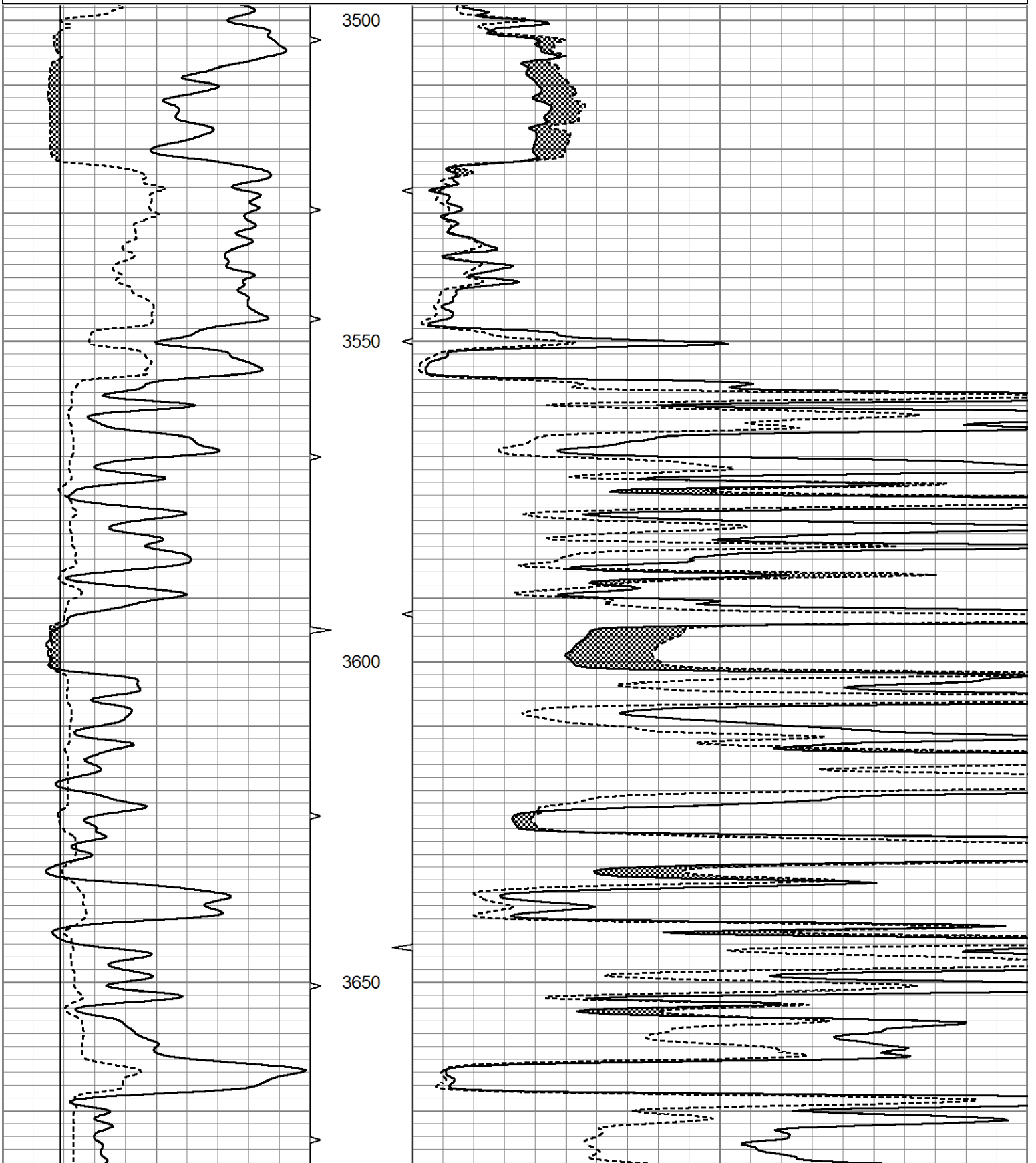
THANK YOU FOR USING ELI WIRELINE HAYS, KANSAS (785) 628-6395
DIRECTIONS
DIGHTON, KS., 6S. ON HWY 23 TO "RD. 90", 2W. TO "JAGGER RD.", 3/4S., E. INTO

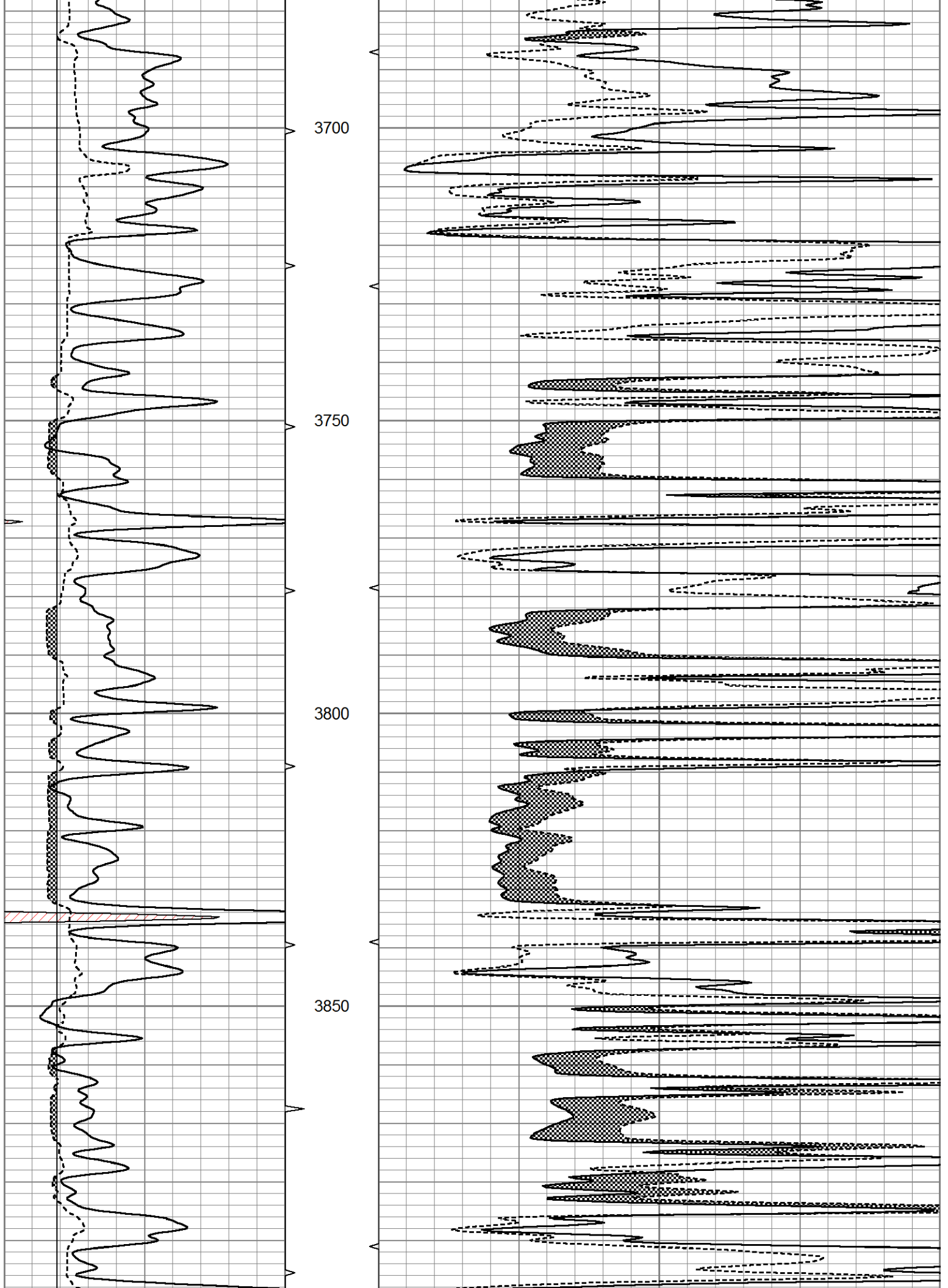


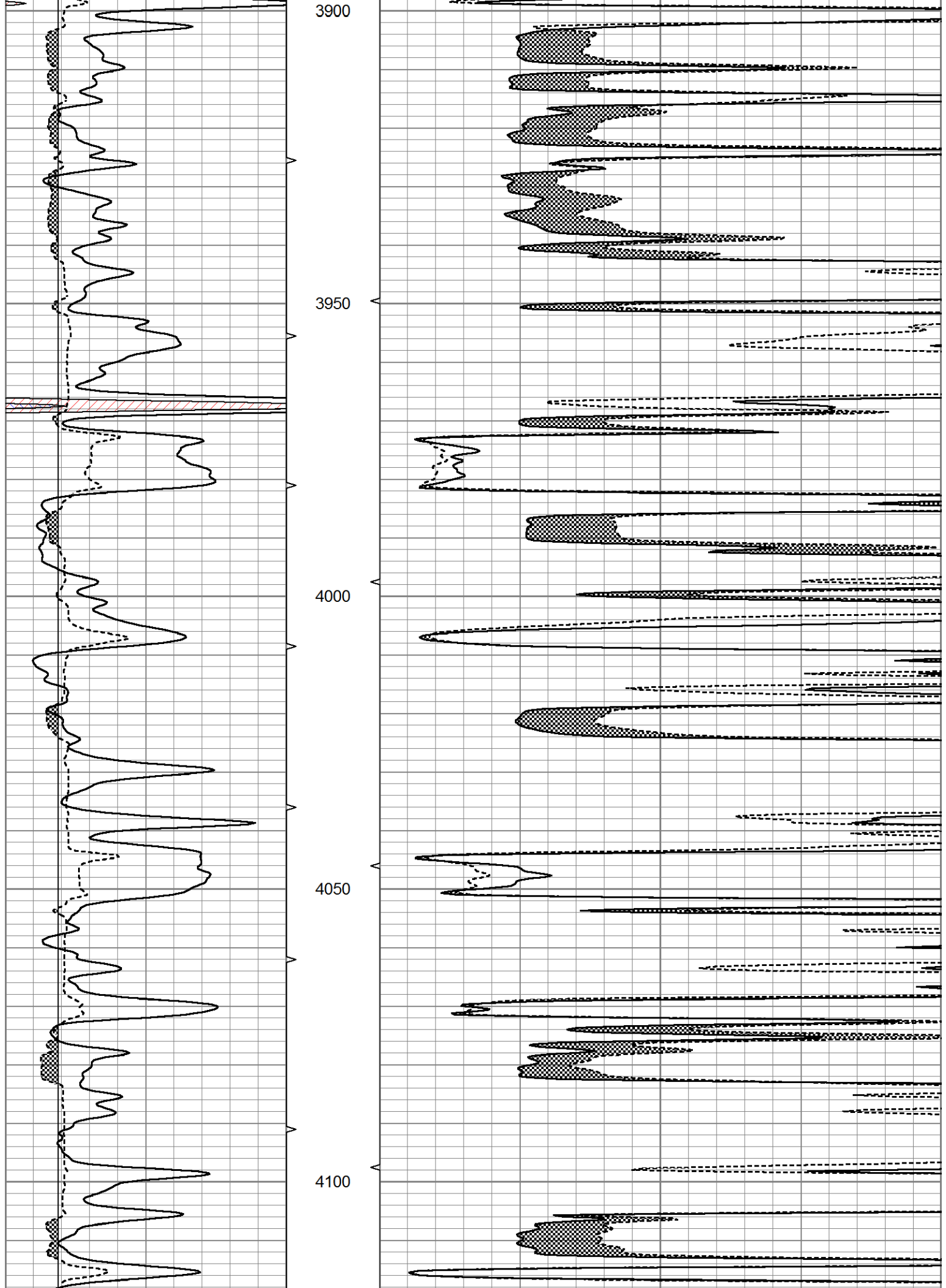
MAIN SECTION

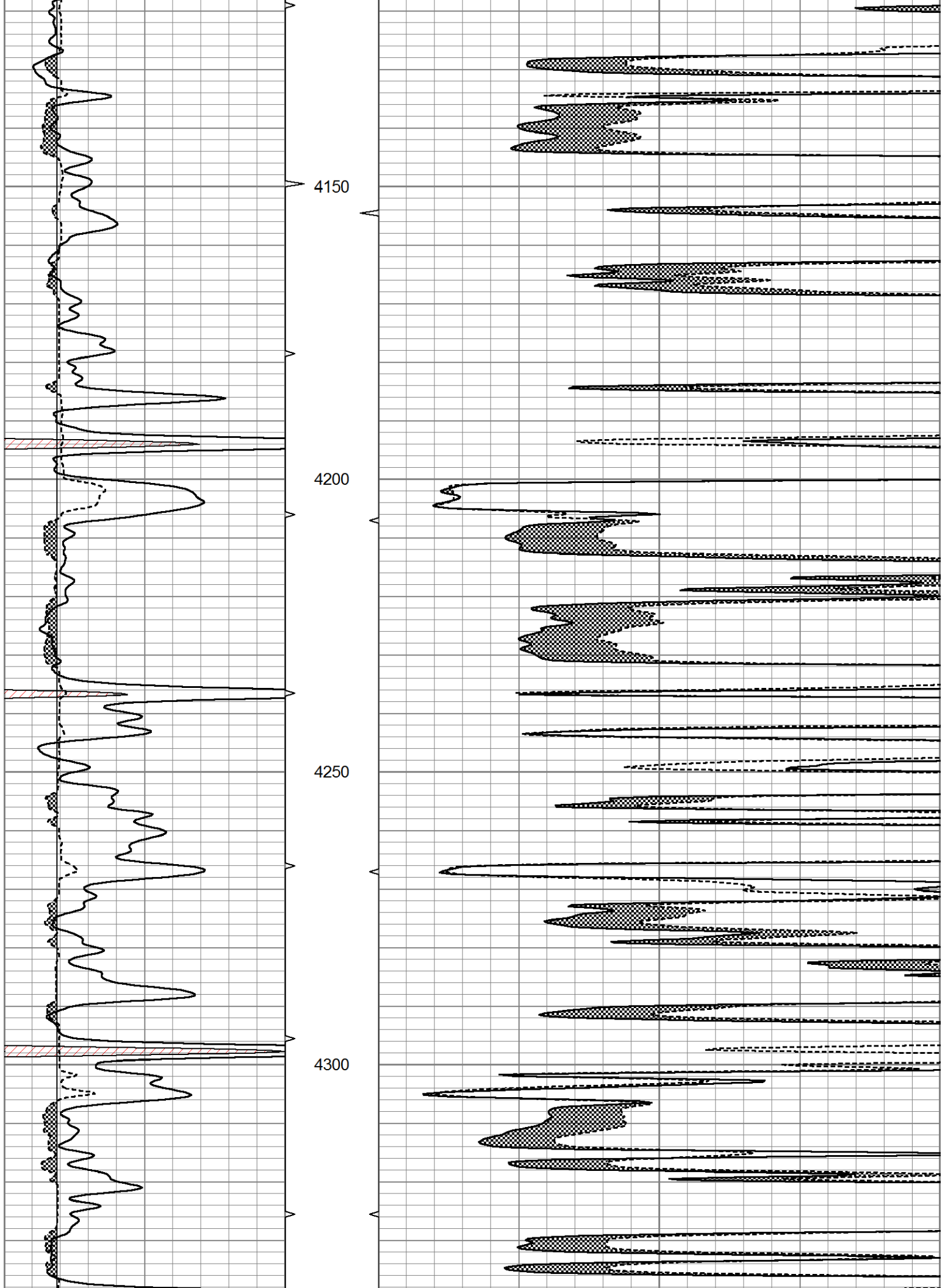
Database File 7090ddn.db
 Dataset Pathname pass8.1
 Presentation Format micro
 Dataset Creation Sat Oct 08 04:27:27 2022
 Charted by Depth in Feet scaled 1:240

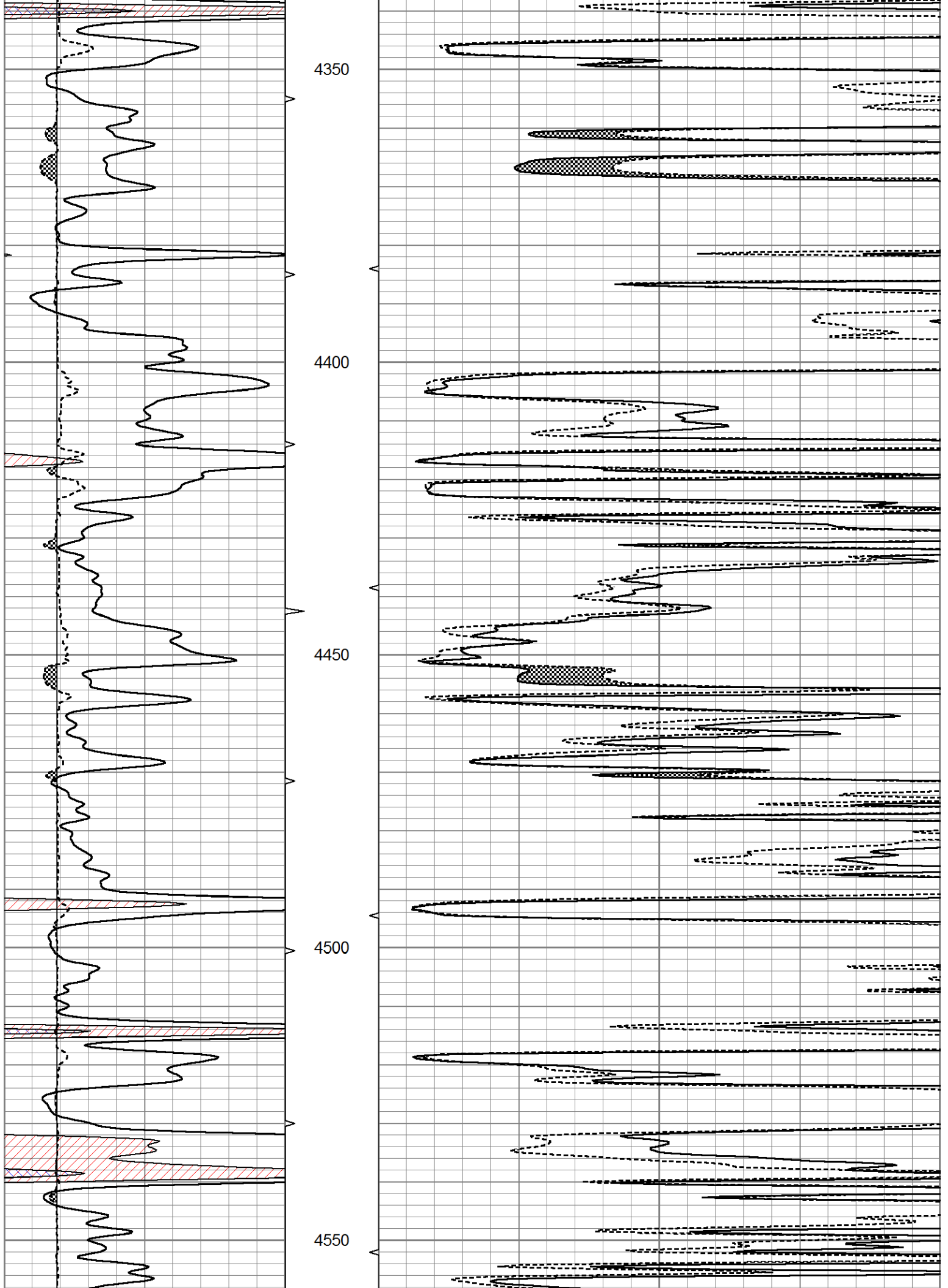
0	GR (GAPI)	150	ABHV	0	MEL20 (Ohm-m)	40
6	MELCAL (in)	16	10 (ft3)	0	MEL15 (Ohm-m)	40
			ABHV			
			0 (ft3)	10		

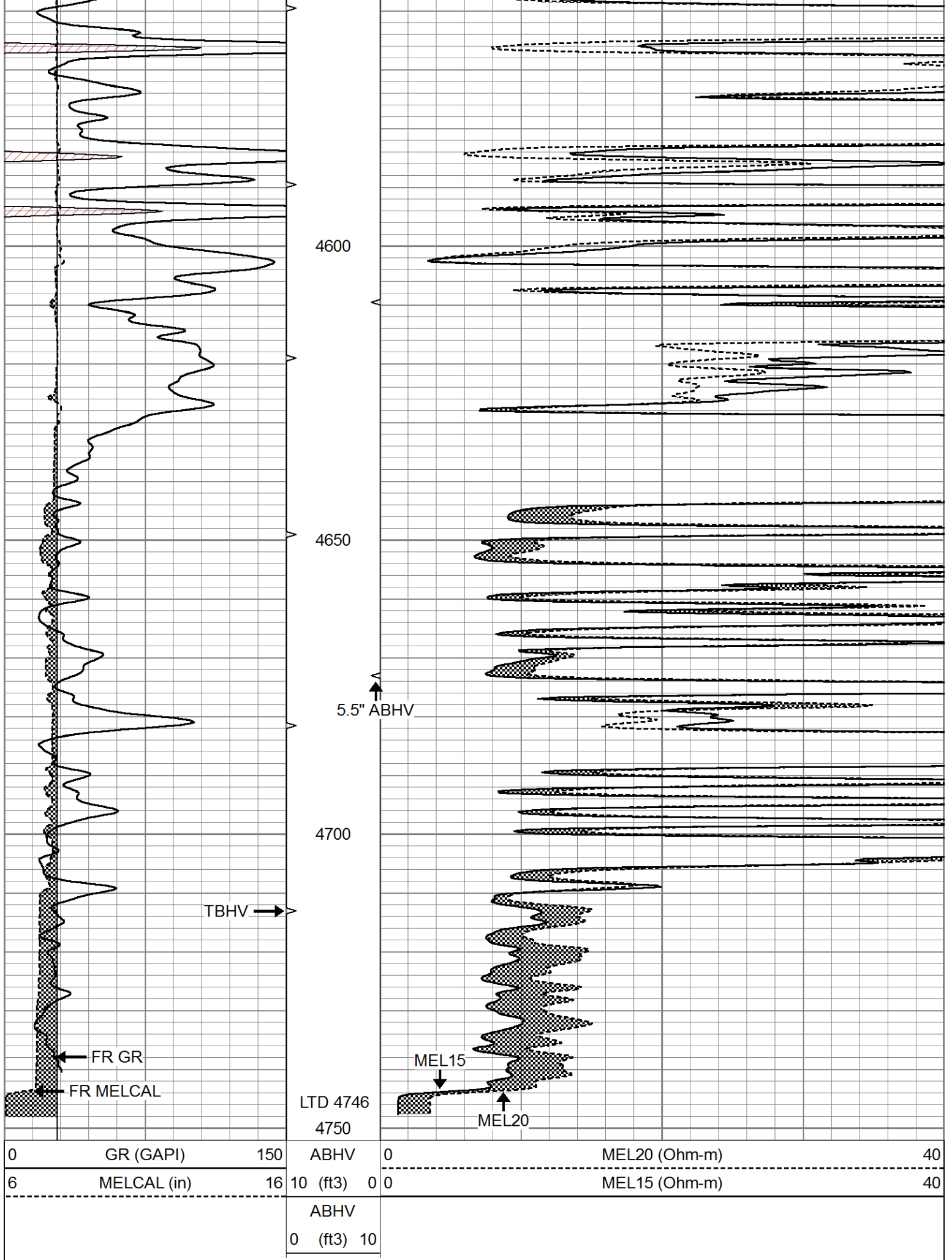










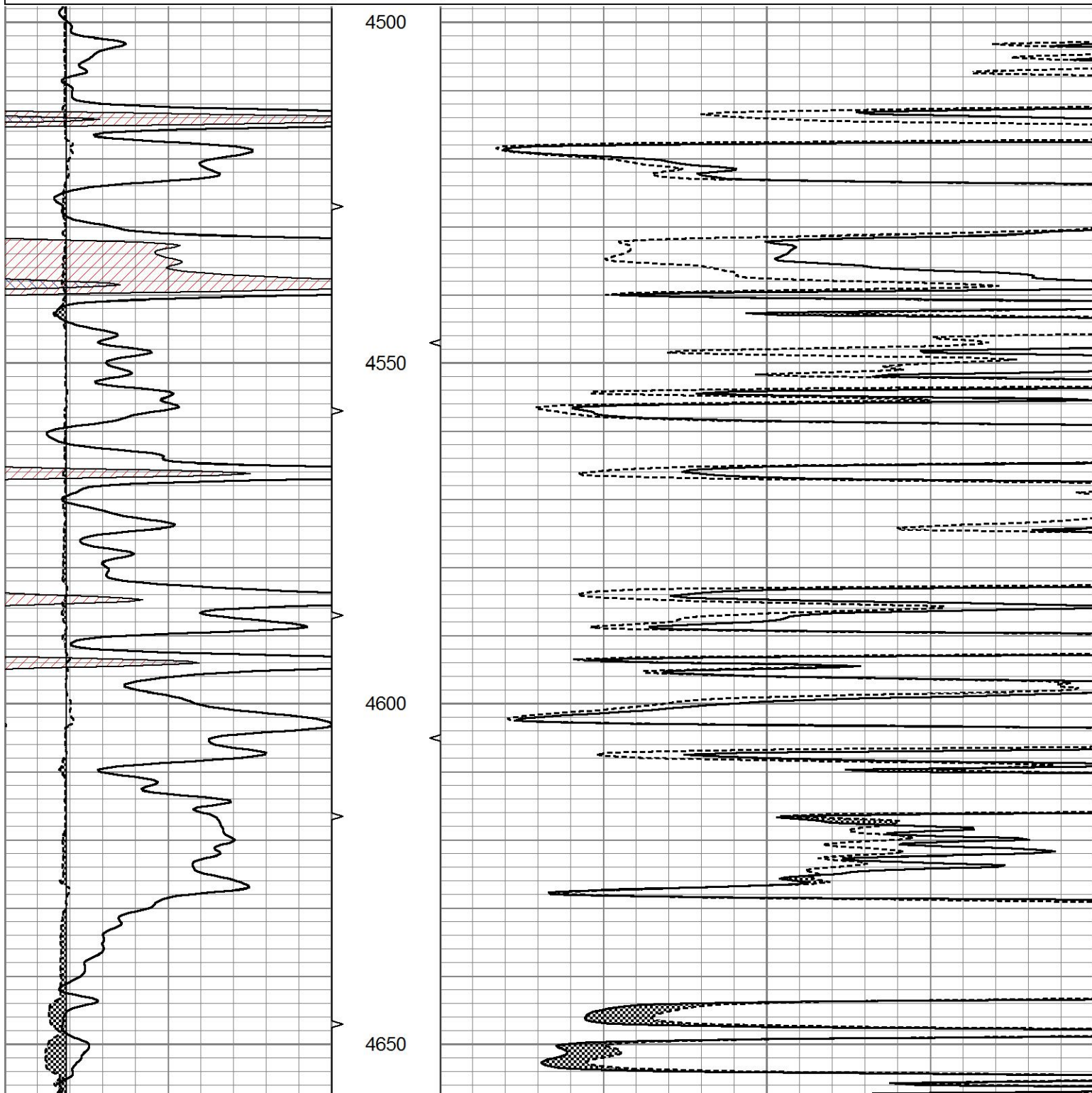


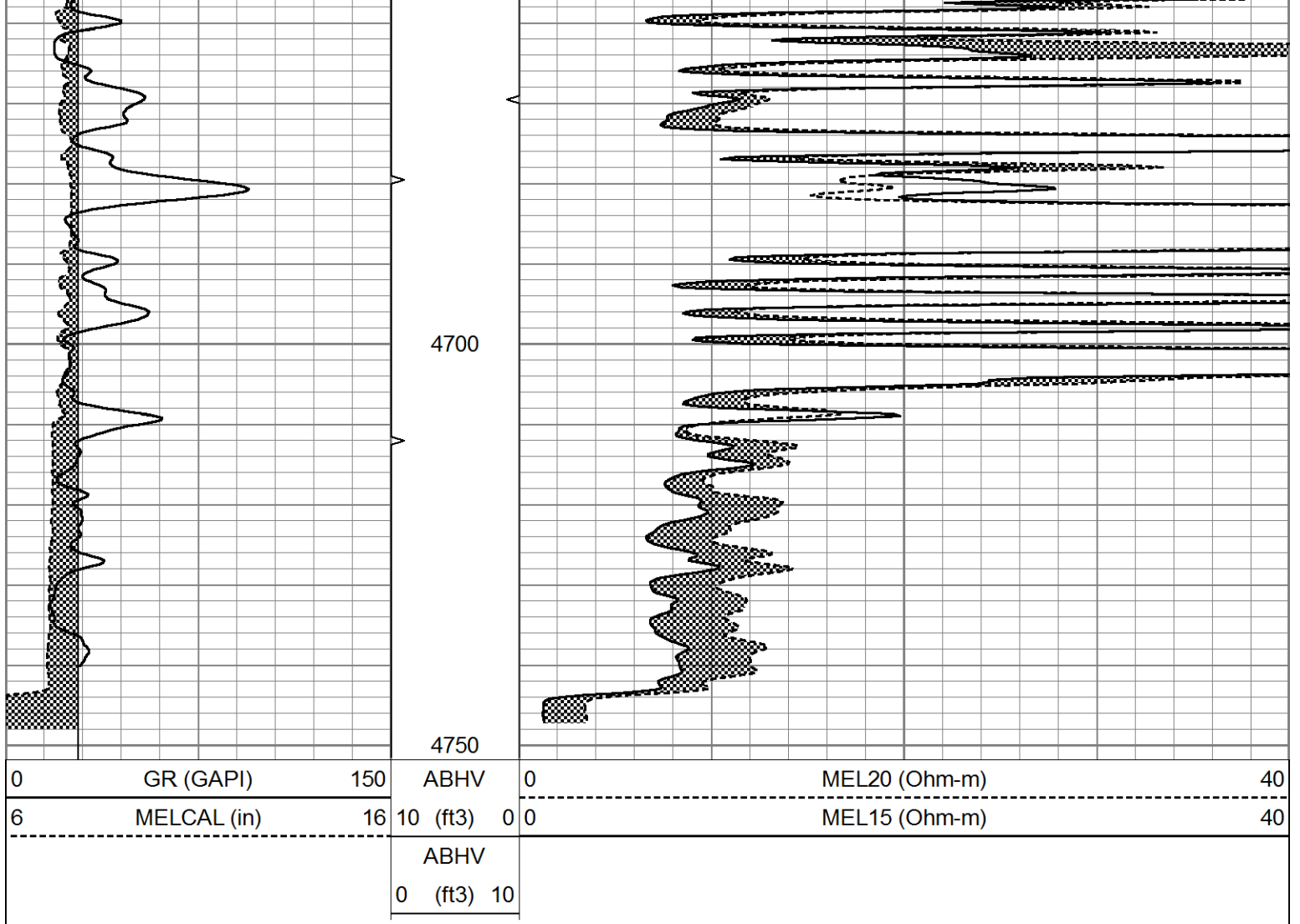


REPEAT SECTION

Database File 7090ddn.db
 Dataset Pathname pass7.2
 Presentation Format micro
 Dataset Creation Sat Oct 08 03:53:04 2022
 Charted by Depth in Feet scaled 1:240

0	GR (GAPI)	150	ABHV	0	MEL20 (Ohm-m)	40
6	MELCAL (in)	16	10 (ft3)	0	MEL15 (Ohm-m)	40
			ABHV			
			0 (ft3)	10		





Calibration Report

Database File 7090ddn.db
 Dataset Pathname pass8.1
 Dataset Creation Sat Oct 08 04:27:27 2022

MICRO Calibration Report

Serial Number:	070910	
Tool Model:	ProbeN	
Performed:	Fri Oct 07 17:18:10 2022	
Caliper Calibration:	Gain=4.762	Offset=0.286
References	Low Cal	High Cal
Readings	8.000	16.000
	1.620	3.300
1.5" Calibration:	Gain=45.000	Offset=-2.000
References	Low Cal	High Cal
Readings	0.000	20.000
	0.000	1.216
2" Calibration:	Gain=55.000	Offset=-2.000
References	Low Cal	High Cal
Readings	0.000	20.000
	0.002	1.053

Gamma Ray Calibration Report

Serial Number:	070559
Tool Model:	OPEN_GR
Performed:	Sat Oct 08 03:50:38 2022

Calibrator Value:	1.0	GAPI
-------------------	-----	------

Background Reading:	0.0	cps
---------------------	-----	-----

Calibrator Reading:	1.0	cps
---------------------	-----	-----

Sensitivity:	0.3200	GAPI/cps
--------------	--------	----------