



**COMPENSATED
DENSITY / NEUTRON
LOG**

Company PALOMINO PETROLEUM, INC.

Well #1 EHMKE TRUST

Field WILDCAT

County LANE State KANSAS

Location: API #: 15-101-22680-0000

991' FSL & 1256' FWL

NE - NE - SW - SW

SEC 23 TWP 19S RGE 29W

GROUND LEVEL Elevation 2837

Log Measured From KELLY BUSHING 5' A.G.L.

Drilling Measured From KELLY BUSHING

DILMEL

Elevation

K.B. 2842

D.F. 2840

G.L. 2837

| | | | |
|------------------------------|---------------|---------------------|--|
| Date | 10/8/22 | | |
| Run Number | ONE | | |
| Depth Driller | 4740 | | |
| Depth Logger | 4746 | | |
| Bottom Logged Interval | 4722 | | |
| Top Log Interval | 3500 | | |
| Casing Driller | 8 5/8"@219' | | |
| Casing Logger | 219 | | |
| Bit Size | 7 7/8" | | |
| Type Fluid in Hole | CHEMICAL MUD | CHLORIDES 4,000 PPM | |
| Density / Viscosity | 9.1/61 | | |
| pH / Fluid Loss | 9.5/9.6 | | |
| Source of Sample | FLOWLINE | | |
| Rm @ Meas. Temp | 1.50@50F | | |
| Rmf @ Meas. Temp | 1.13@50F | | |
| Rmc @ Meas. Temp | 1.80@50F | | |
| Source of Rmf / Rmc | MEASUREMENT | | |
| Rm @ BHT | .610@123F | | |
| Time Circulation Stopped | 2.5 HOURS | | |
| Time Logger on Bottom | 1:30 A.M. | | |
| Maximum Recorded Temperature | 123F | | |
| Equipment Number | 922339 | | |
| Location | HAYS, KANSAS | | |
| Recorded By | JEFF LUEBBERS | | |
| Witnessed By | KIM SHOEMAKER | | |

<<< Fold Here >>>

All interpretations are opinions based on inferences from electrical or other measurements and we cannot and do not guarantee the accuracy or correctness of any interpretation, and we shall not, except in the case of gross or willful negligence on our part, be liable or responsible for any loss, costs, damages, or expenses incurred or sustained by anyone resulting from any interpretation made by any of our officers, agents or employees. These interpretations are also subject to our general terms and conditions set out in our current Price Schedule.

15-101-22680-0000

Comments

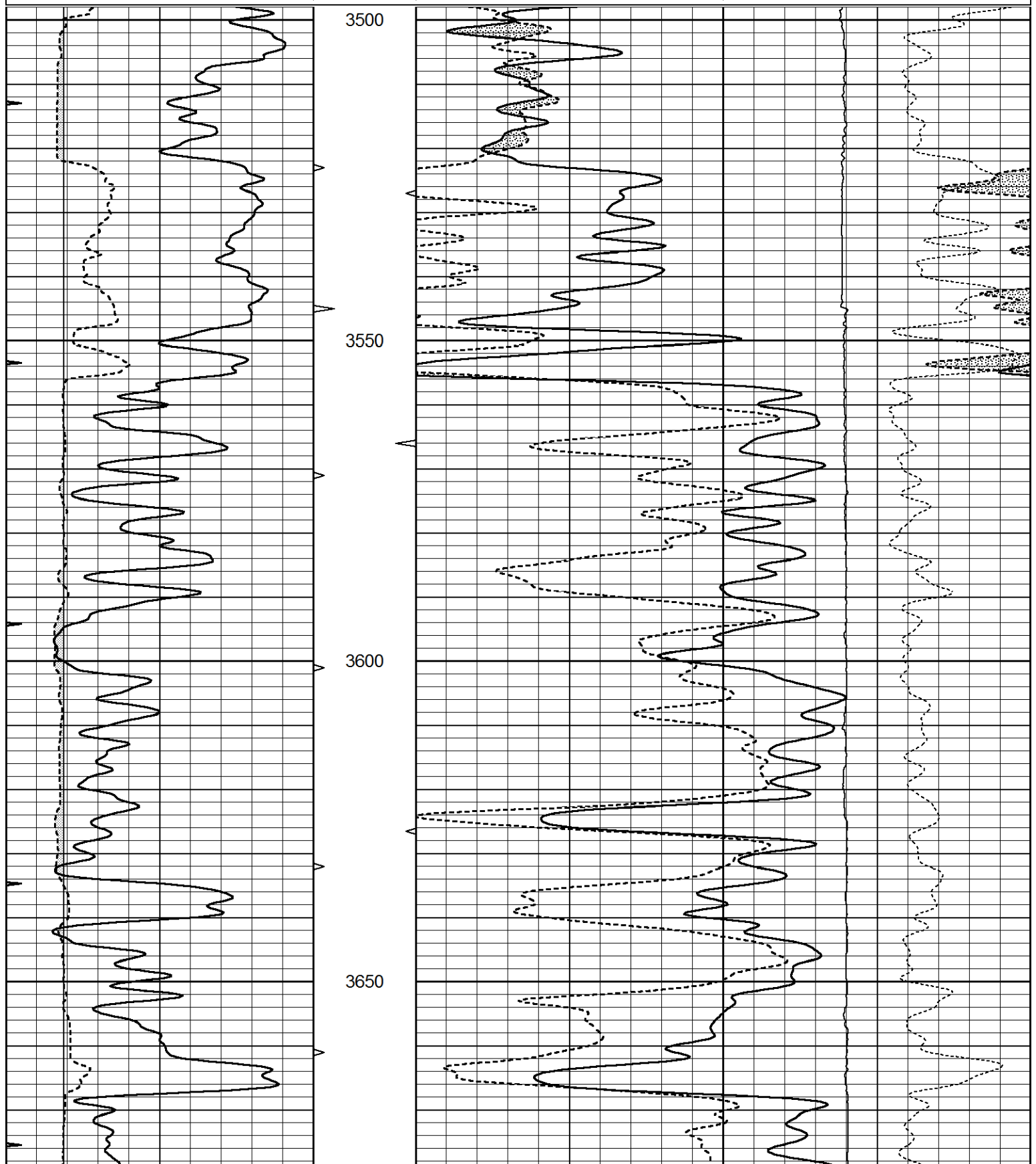
THANK YOU FOR USING ELI WIRELINE HAYS, KANSAS (785) 628-6395
DIRECTIONS
DIGHTON, KS., 6S. ON HWY 23 TO "RD. 90", 2W. TO "JAGGER RD.", 3/4S., E. INTO

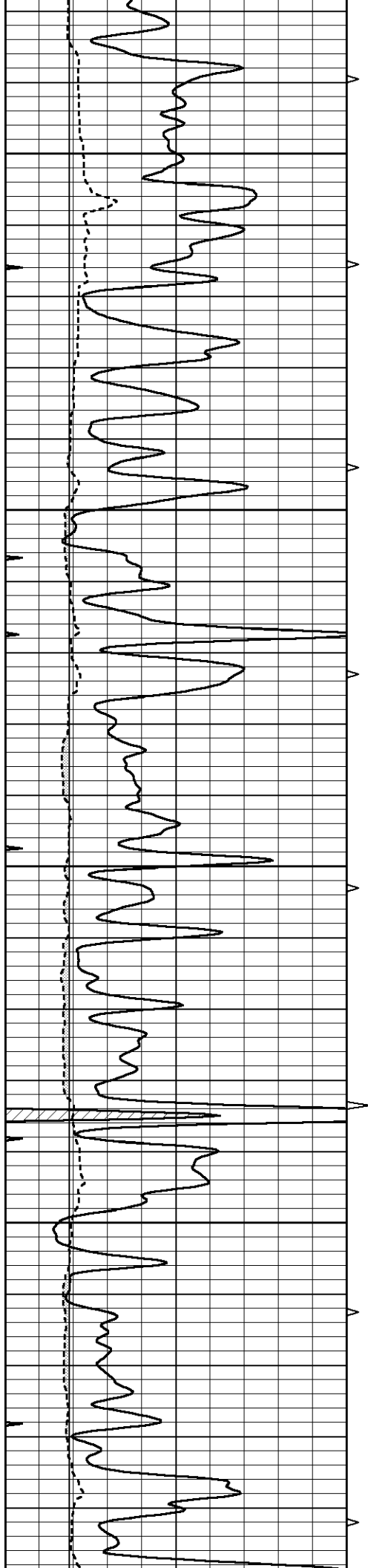


MAIN SECTION

Database File 7090ddn.db
 Dataset Pathname pass5.1M
 Presentation Format den_neu
 Dataset Creation Sat Oct 08 03:10:07 2022
 Charted by Depth in Feet scaled 1:240

| | | | | | | | |
|---|------------------|-----|----------|----|--------------------------|--------------------------|------|
| 0 | GAMMA RAY (GAPI) | 150 | ABHV | 30 | COMPENSATED DENSITY (pu) | -10 | |
| 6 | DCAL (in) | 16 | 10 (ft3) | 0 | 30 | COMPENSATED NEUTRON (pu) | -10 |
| 0 | MINMK | 20 | TBHV | | -0.25 | CORRECTION (g/cc) | 0.25 |
| | | | 0 (ft3) | 10 | 0 | LTEN (lb) | 5000 |



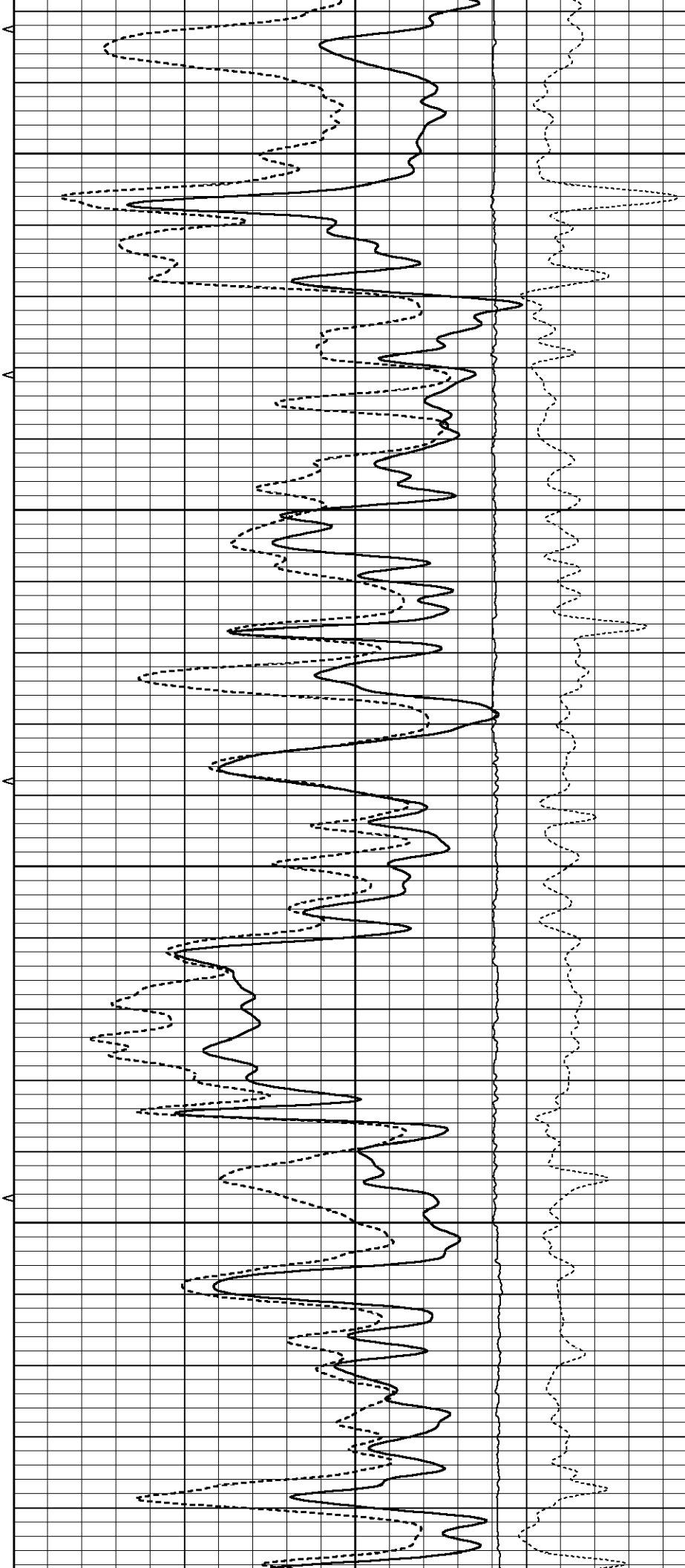


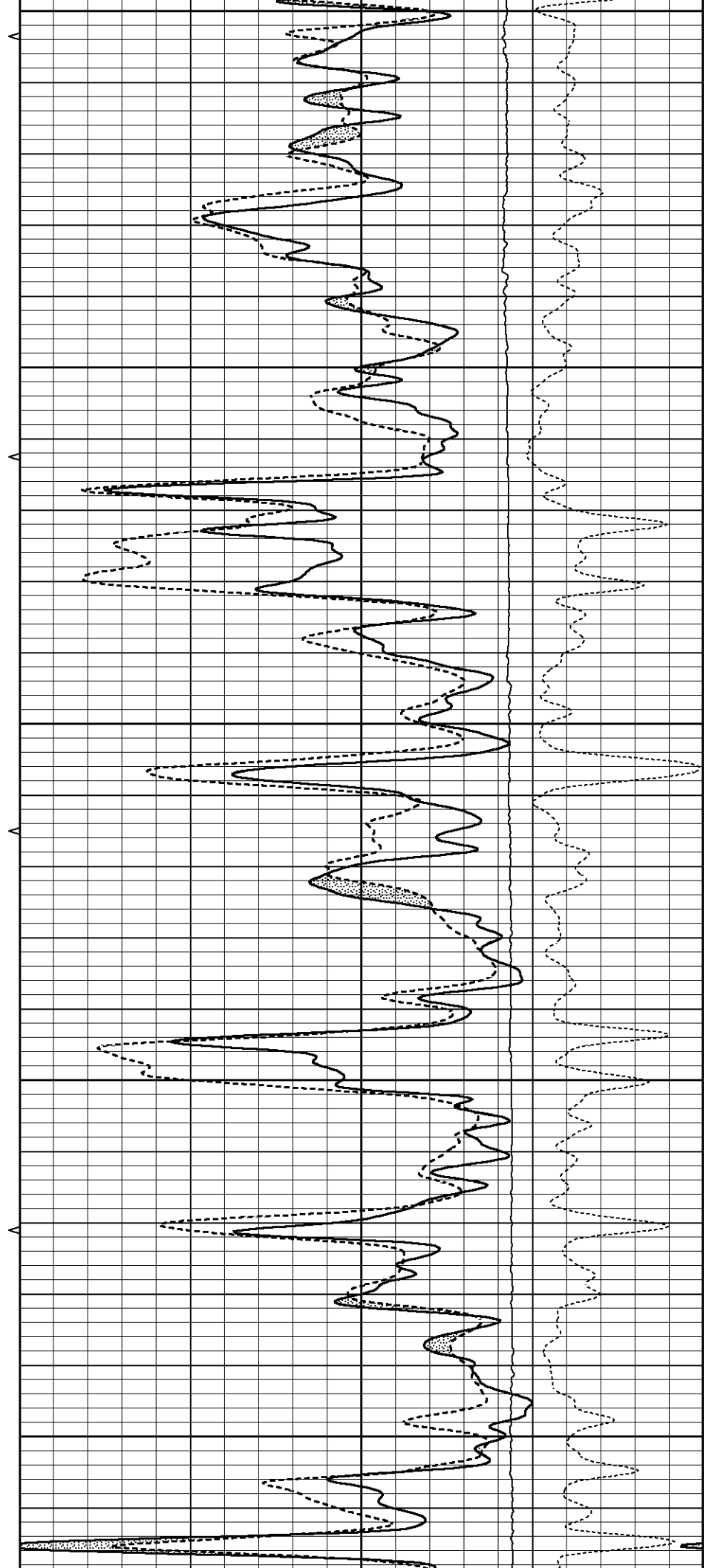
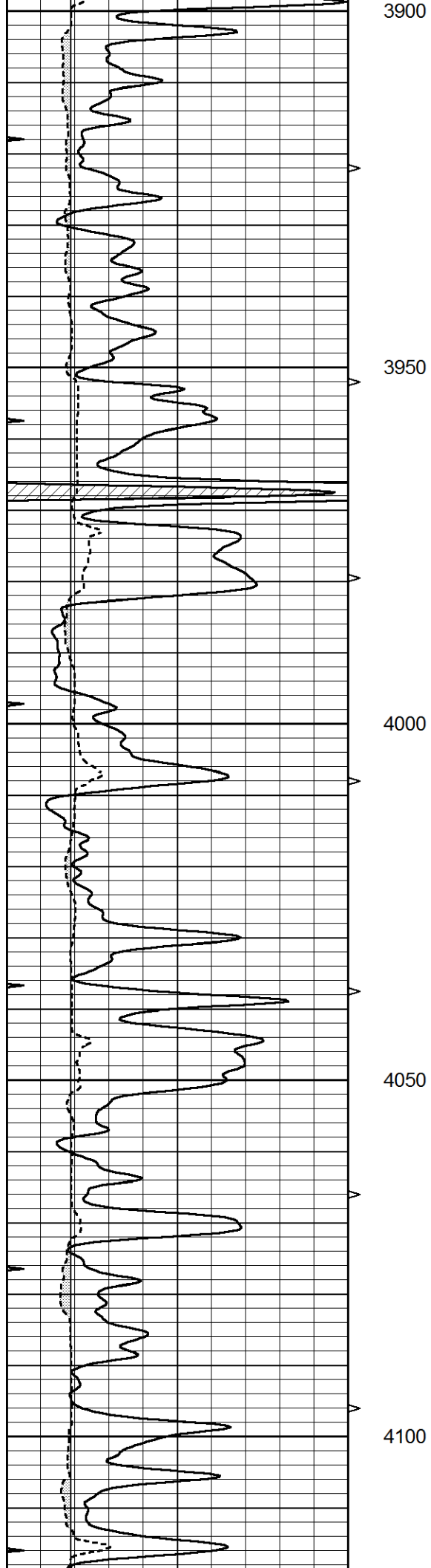
3700

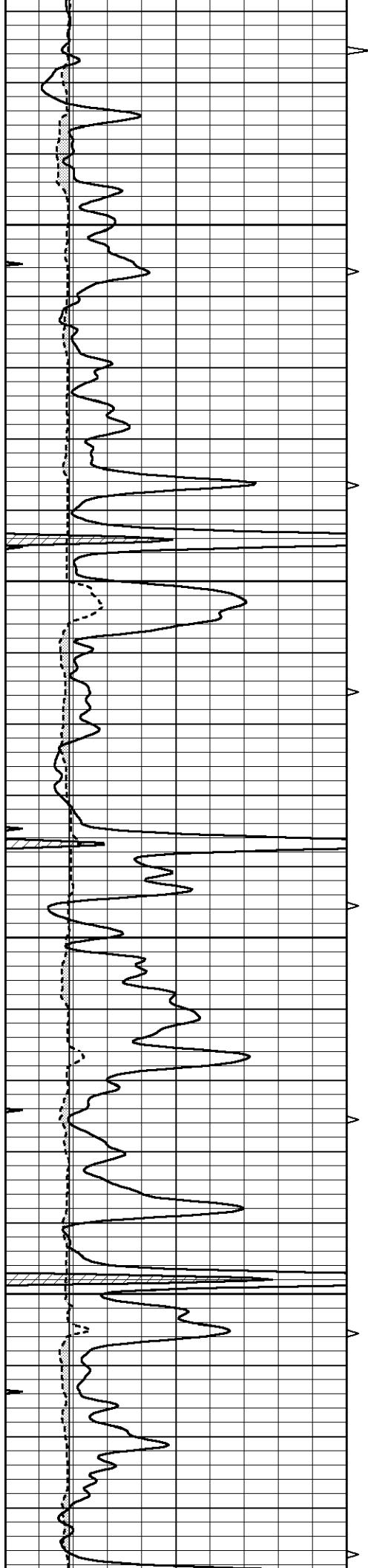
3750

3800

3850





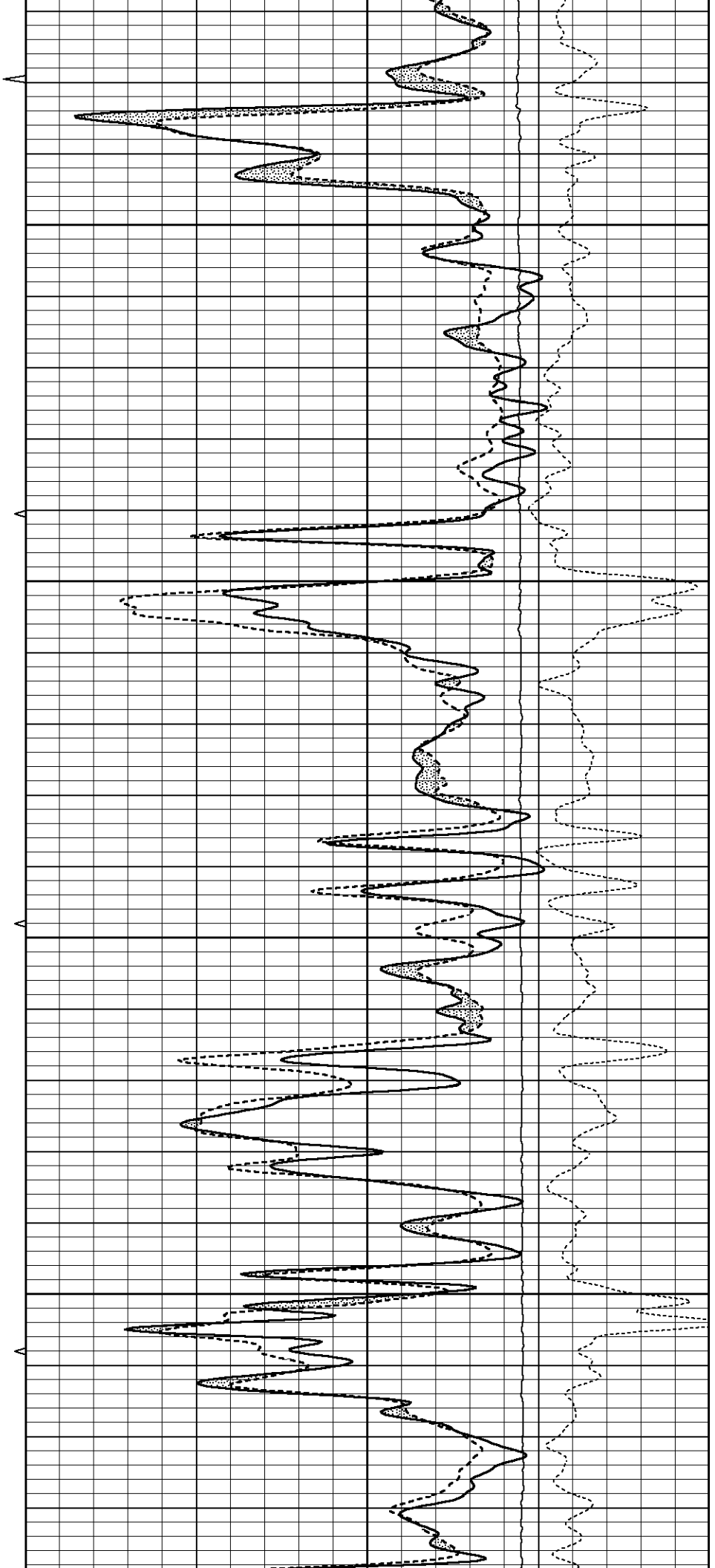


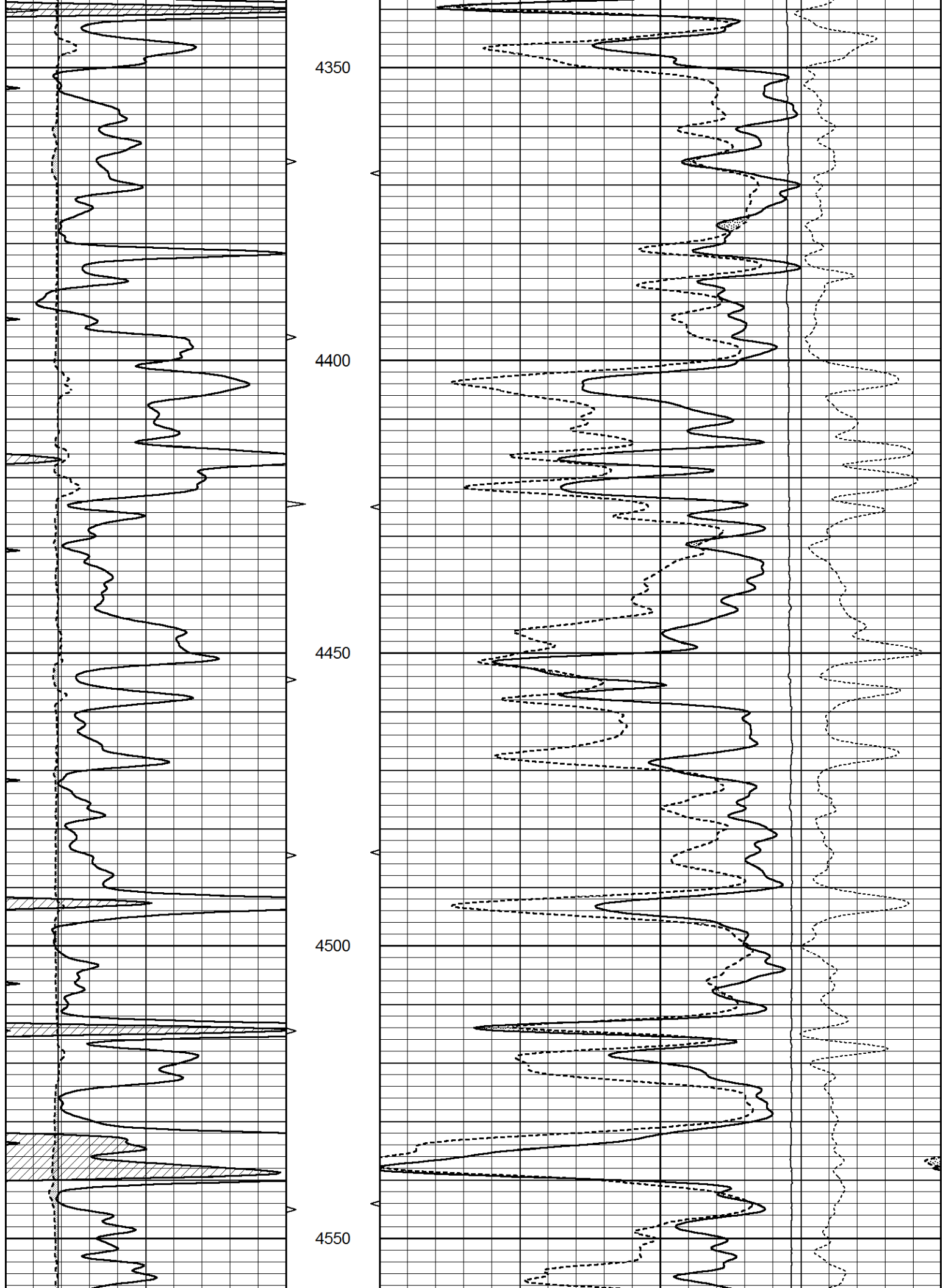
4150

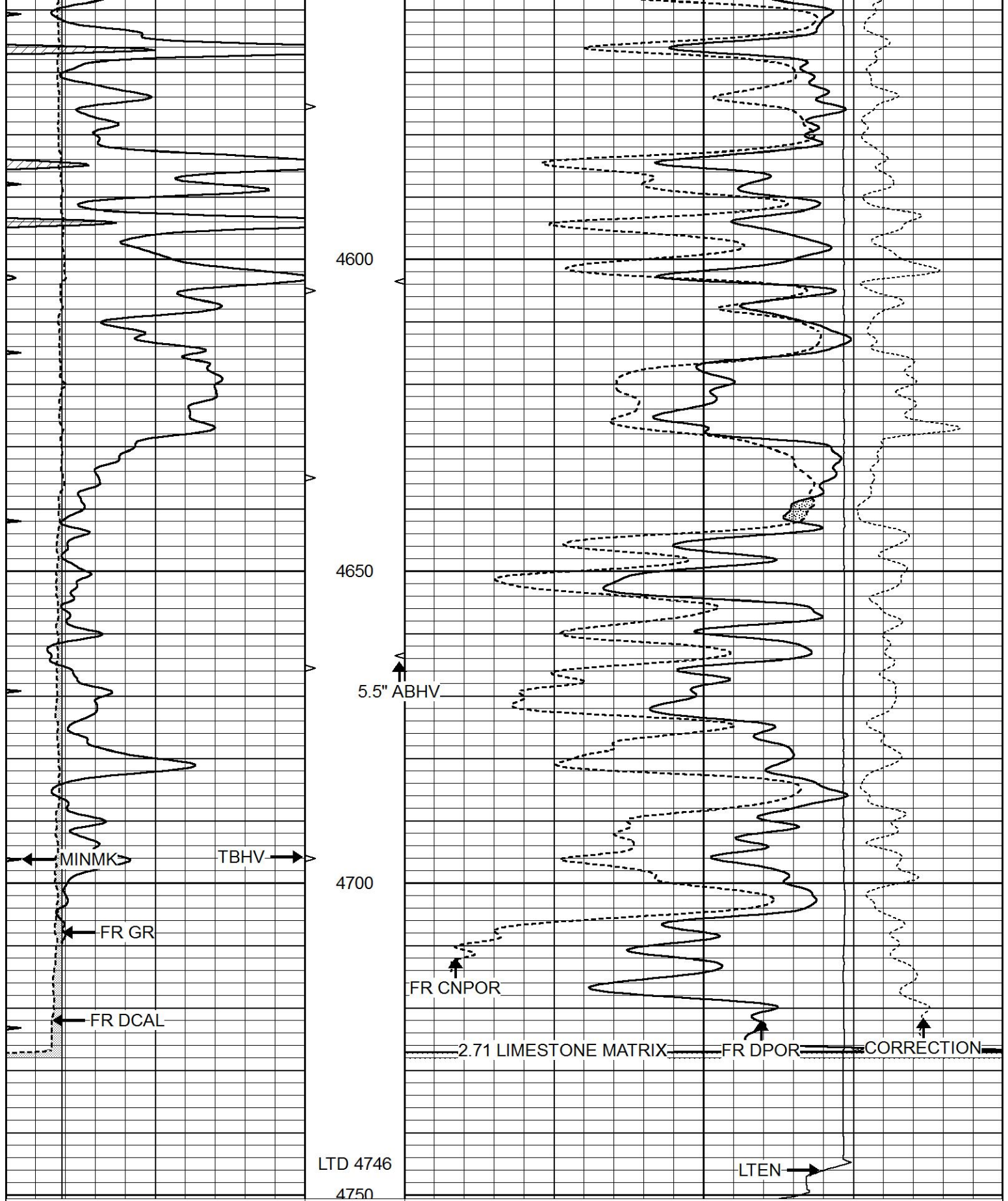
4200

4250

4300







| | | | | | | | |
|---|------------------|-----|----------|------|--------------------------|-----------|------|
| 0 | GAMMA RAY (GAPI) | 150 | ABHV | 30 | COMPENSATED DENSITY (pu) | -10 | |
| 6 | DCAL (in) | 16 | 10 (ft3) | 0 30 | COMPENSATED NEUTRON (pu) | -10 | |
| 0 | MINMK | 20 | TBHV | | -0.25 CORRECTION (g/cc) | 0.25 | |
| | | | 0 (ft3) | 10 | 0 | LTEN (lb) | 5000 |

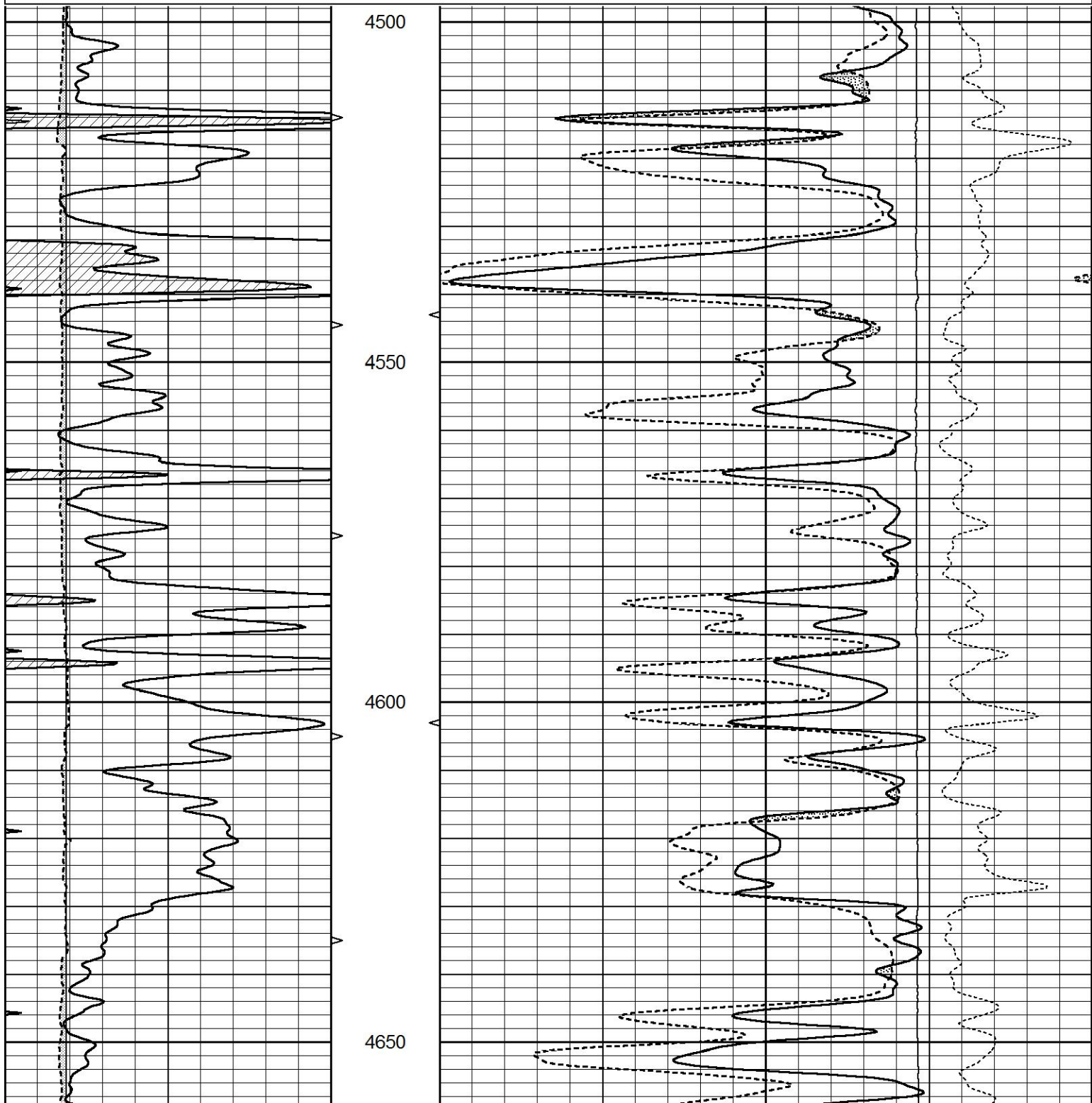


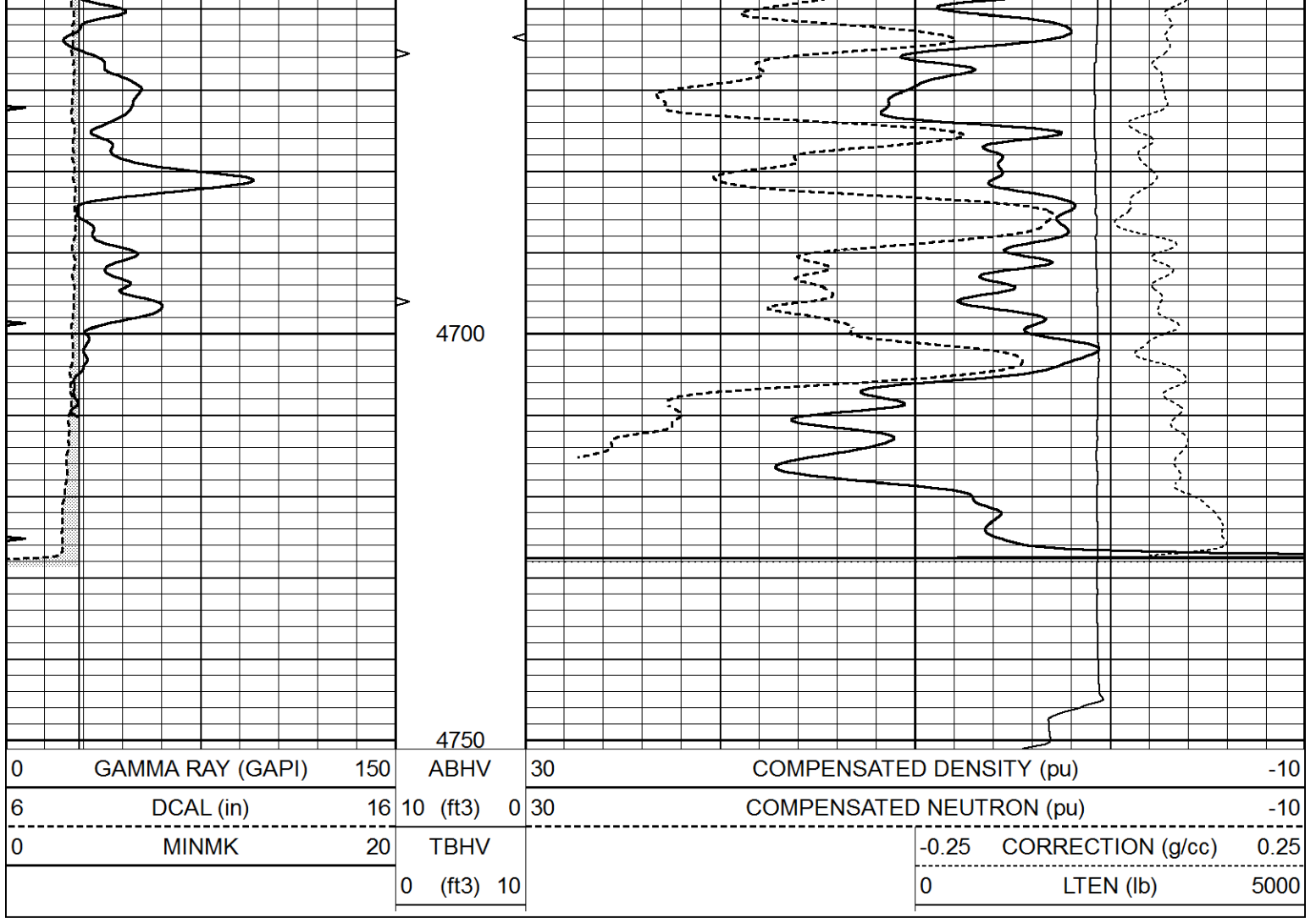


REPEAT SECTION

Database File 7090ddn.db
 Dataset Pathname pass4.1R
 Presentation Format den_neu
 Dataset Creation Sat Oct 08 02:17:08 2022
 Charted by Depth in Feet scaled 1:240

| | | | | | | | |
|---|------------------|-----|----------|------|--------------------------|-----------|------|
| 0 | GAMMA RAY (GAPI) | 150 | ABHV | 30 | COMPENSATED DENSITY (pu) | -10 | |
| 6 | DCAL (in) | 16 | 10 (ft3) | 0 30 | COMPENSATED NEUTRON (pu) | -10 | |
| 0 | MINMK | 20 | TBHV | | -0.25 CORRECTION (g/cc) | 0.25 | |
| | | | 0 (ft3) | 10 | 0 | LTEN (lb) | 5000 |





Calibration Report

Database File 7090ddn.db
 Dataset Pathname pass5.1M
 Dataset Creation Sat Oct 08 03:10:07 2022

Dual Induction Calibration Report

Serial-Model: PROBE8-DILG
 Surface Cal Performed: Fri Oct 07 13:54:26 2022
 Downhole Cal Performed: Mon Jul 28 11:08:27 2008
 After Survey Verification Performed: Mon Jul 28 11:08:27 2008

Surface Calibration

| Loop: | Readings | | | | References | | Results | |
|-----------|----------|-------|---|-------|------------|--------|---------|---------|
| | Air | Loop | | | Air | Loop | m | b |
| Deep | 0.015 | 0.648 | V | 0.000 | 400.000 | mmho/m | 640.000 | 5.000 |
| Medium | 0.029 | 0.796 | V | 0.000 | 464.000 | mmho/m | 625.000 | -5.000 |
| Internal: | Zero | | | | Cal | | m | |
| Deep | 0.017 | 0.657 | V | 0.000 | 400.000 | mmho/m | 625.153 | -10.619 |
| Medium | 0.016 | 0.757 | V | 0.000 | 464.000 | mmho/m | 625.992 | -9.739 |

Downhole Calibration

| | Readings | | | | References | | Results | |
|------|----------|-------|--------|-------|------------|--------|---------|-------|
| | Zero | Cal | | | Zero | Cal | m' | b' |
| Deep | 0.000 | 0.000 | mmho/m | 2.011 | 405.777 | mmho/m | 1.000 | 0.000 |

| | | | | | | | | |
|--------|-------|--------|--------|-------|----------|--------|-------|-------|
| Medium | 0.000 | 0.000 | mmho/m | 7.590 | 503.393 | mmho/m | 1.000 | 0.000 |
| LL3 | | 7.500 | V | | 1500.000 | Ohm-m | | |
| | | 0.000 | V | | 20.000 | Ohm-m | | |
| | | -7.200 | V | | 3800.000 | mmho-m | | |

| After Survey Verification | | | | | | | | |
|---------------------------|----------|-------|--------|---------|-------|--------|---------|-------|
| | Readings | | | Targets | | | Results | |
| | Zero | Cal | | Zero | Cal | | m' | b' |
| Deep | 0.000 | 0.000 | mmho/m | 0.000 | 0.000 | mmho/m | 0.000 | 0.000 |
| Medium | 0.000 | 0.000 | mmho/m | 0.000 | 0.000 | mmho/m | 0.000 | 0.000 |
| LL3 | | 1.000 | Ohm-m | | 1.000 | Ohm-m | | |
| | | 0.000 | Ohm-m | | 0.000 | Ohm-m | | |
| | | 1.000 | mmho-m | | 1.000 | mmho-m | | |

Litho Density Calibration Report
Serial: 001 Model: PRB

| Master Calibration | | Performed Tue Aug 02 14:54:49 2022 | | | | |
|--------------------|------------|------------------------------------|----------|---------------------|---------|--|
| | Background | Magnesium | Aluminum | Aluminum+Fe | | |
| Window 1 | 1540.1 | 9840.1 | 3279.8 | 3001.8 | cps | |
| Window 2 | 1435.6 | 8495.4 | 2920.3 | 2720.3 | cps | |
| Window 3 | 1167.4 | 4527.9 | 1868.6 | 1810.1 | cps | |
| Window 4 | 344.6 | 343.5 | 346.7 | 342.3 | cps | |
| Long Space | 0.0 | 7059.8 | 1484.8 | 1284.7 | cps | |
| Short Space | 3.3 | 2502.7 | 1618.3 | 1368.5 | cps | |
| Rho | | 1.7100 | 2.5900 | 0.0000 | g/cc | |
| Pe | | 2.0000 | 2.7500 | 5.7900 | | |
| Rib Angle | : 44.4 | Rib Slope | : 0.979 | Density/Spine Ratio | : 0.544 | |
| Spine Angle | : 74.4 | Spine Slope | : 3.576 | Spine Intercept | : -19.1 | |

| Before Survey Verification | | Performed Wed Dec 31 18:00:00 1969 | | | | |
|----------------------------|-----|------------------------------------|--------|--------|------|--|
| | | | | | | |
| Window 1 | 0.0 | 0.0 | 0.0 | 0.0 | cps | |
| Window 2 | 0.0 | 0.0 | 0.0 | 0.0 | cps | |
| Window 3 | 0.0 | 0.0 | 0.0 | 0.0 | cps | |
| Window 4 | 0.0 | 0.0 | 0.0 | 0.0 | cps | |
| Long Space | 0.0 | 0.0 | 0.0 | 0.0 | cps | |
| Short Space | 0.0 | 0.0 | 0.0 | 0.0 | cps | |
| Measured Rho | | 0.0000 | 0.0000 | 0.0000 | g/cc | |
| Measured Correction | | 0.0000 | 0.0000 | 0.0000 | g/cc | |
| Measured Pe | | | 0.0000 | 0.0000 | | |

| After Survey Verification | | Performed Wed Dec 31 18:00:00 1969 | | | | |
|---------------------------|-----|------------------------------------|--------|--------|------|--|
| | | | | | | |
| Window 1 | 0.0 | 0.0 | 0.0 | 0.0 | cps | |
| Window 2 | 0.0 | 0.0 | 0.0 | 0.0 | cps | |
| Window 3 | 0.0 | 0.0 | 0.0 | 0.0 | cps | |
| Window 4 | 0.0 | 0.0 | 0.0 | 0.0 | cps | |
| Long Space | 0.0 | 0.0 | 0.0 | 0.0 | cps | |
| Short Space | 0.0 | 0.0 | 0.0 | 0.0 | cps | |
| Measured Rho | | 0.0000 | 0.0000 | 0.0000 | g/cc | |
| Measured Correction | | 0.0000 | 0.0000 | 0.0000 | g/cc | |
| Measured Pe | | | 0.0000 | 0.0000 | | |

Compensated Neutron Calibration Report

Serial Number: 070808PMC
Tool Model: NABORS

PRE-SURVEY VERIFICATION

| Detector | Readings | Measured | Target |
|-------------|----------|----------|--------|
| Short Space | cps | | |
| Long Space | cps | pu | pu |

POST-SURVEY VERIFICATION

| Detector | Readings | Measured | Target |
|-------------|----------|----------|--------|
| Short Space | cps | | |
| Long Space | cps | pu | pu |

Gamma Ray Calibration Report

| | | |
|---------------------|--------------------------|----------|
| Serial Number: | 070558 | |
| Tool Model: | OPEN_GR | |
| Performed: | Sat Oct 08 02:49:45 2022 | |
| Calibrator Value: | 1.0 | GAPI |
| Background Reading: | 0.0 | cps |
| Calibrator Reading: | 1.0 | cps |
| Sensitivity: | 0.3000 | GAPI/cps |