



# DUAL INDUCTION LOG

Company PALOMINO PETROLEUM, INC.  
 Well #1 EHMKE TRUST  
 Field WILDCAT  
 County LANE State KANSAS

Location: 991' FSL & 1256' FWL  
 NE - NE - SW - SW  
 SEC 23 TWP 19S RGE 29W  
 Permanent Datum GROUND LEVEL Elevation 2837  
 Log Measured From KELLY BUSHING 5' A.G.L.  
 Drilling Measured From KELLY BUSHING  
 Other Services CDL/CNL MEL  
 Elevation K.B. 2842 D.F. 2840 G.L. 2837

Date	10/8/22
Run Number	ONE
Depth Driller	4740
Depth Logger	4746
Bottom Logged Interval	4744
Top Log Interval	00
Casing Driller	8 5/8"@219'
Casing Logger	219
Bit Size	7 7/8"
Type Fluid in Hole	CHEMICAL MUD
Density / Viscosity	9.1/61
pH / Fluid Loss	9.5/9.6
Source of Sample	FLOWLINE
Rm @ Meas. Temp	1.50@50F
Rmf @ Meas. Temp	1.13@50F
Rmc @ Meas. Temp	1.80@50F
Source of Rmf / Rmc	MEASUREMENT
Rm @ BHT	.610@123F
Time Circulation Stopped	2.5 HOURS
Time Logger on Bottom	1:30 A.M.
Maximum Recorded Temperature	123F
Equipment Number	922339
Location	HAYS, KANSAS
Recorded By	JEFF LUEBBERS
Witnessed By	KIM SHOEMAKER

<<< Fold Here >>>

All interpretations are opinions based on inferences from electrical or other measurements and we cannot and do not guarantee the accuracy or correctness of any interpretation, and we shall not, except in the case of gross or willful negligence on our part, be liable or responsible for any loss, costs, damages, or expenses incurred or sustained by anyone resulting from any interpretation made by any of our officers, agents or employees. These interpretations are also subject to our general terms and conditions set out in our current Price Schedule.

15-101-22680-0000 Comments

THANK YOU FOR USING ELI WIRELINE HAYS, KANSAS (785) 628-6395  
 DIRECTIONS  
 DIGHTON, KS., 6S. ON HWY 23 TO "RD. 90", 2W. TO "JAGGER RD.", 3/4S., E. INTO

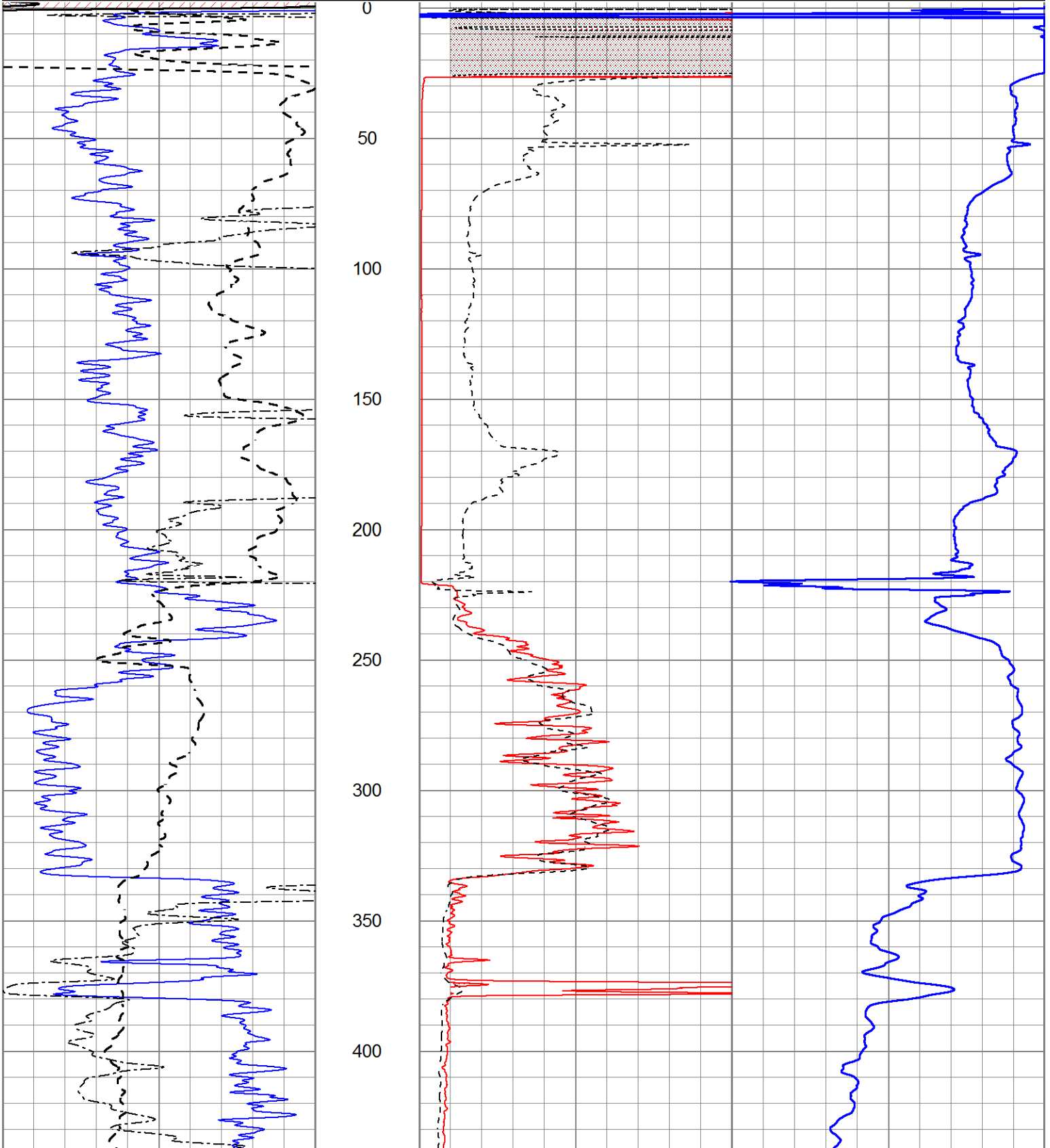


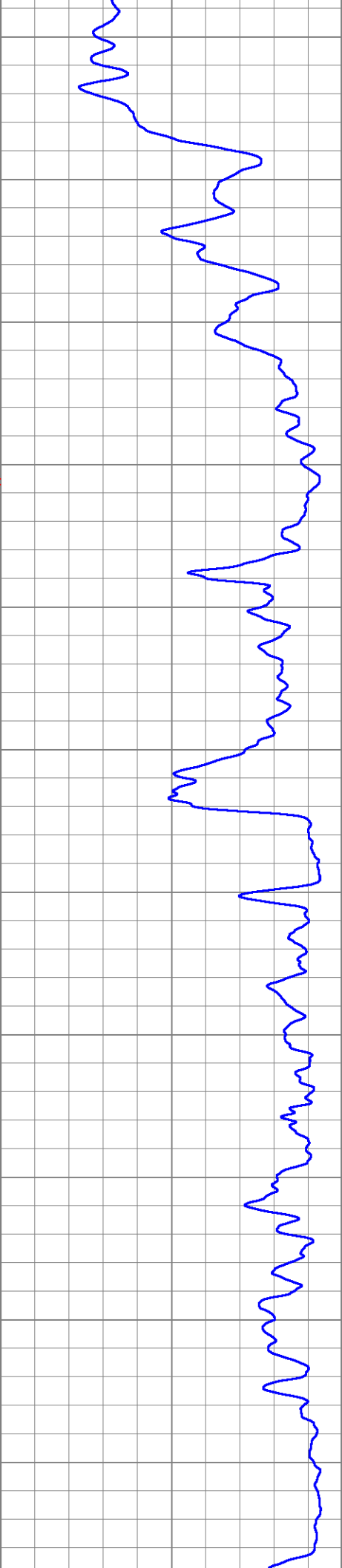
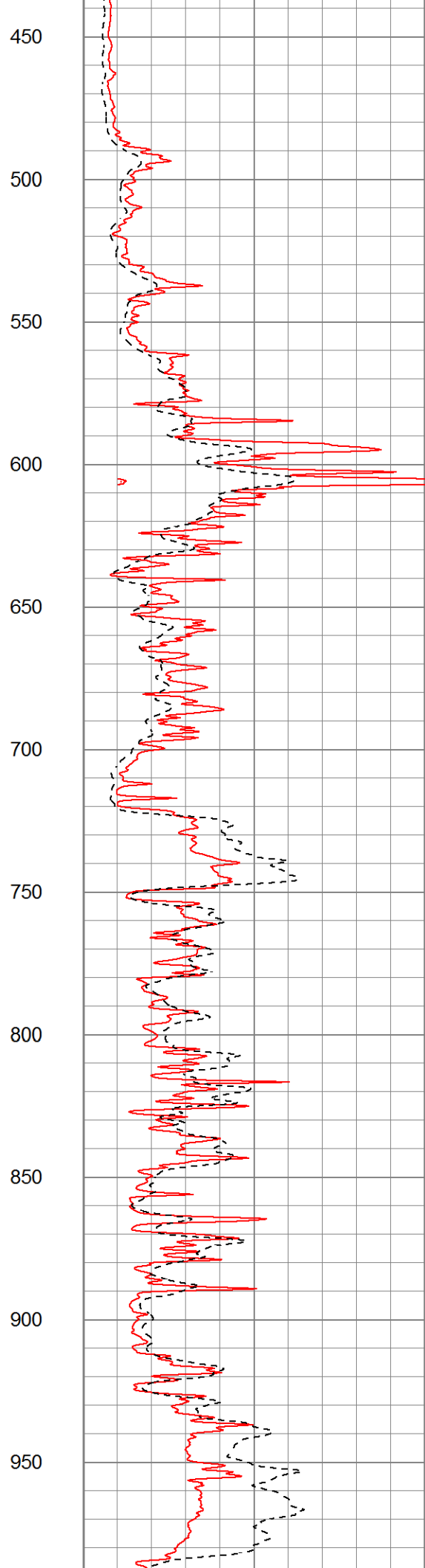
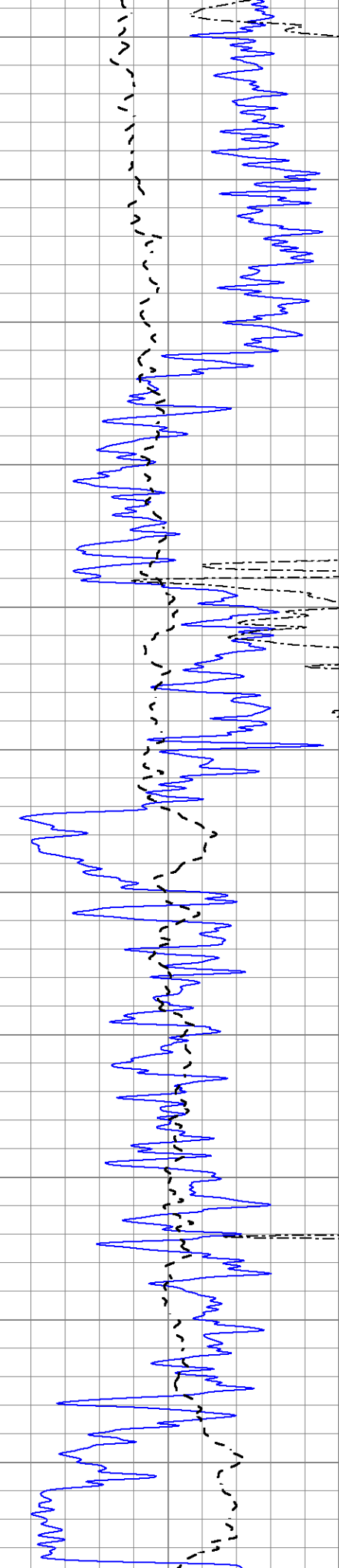
# MAIN SECTION

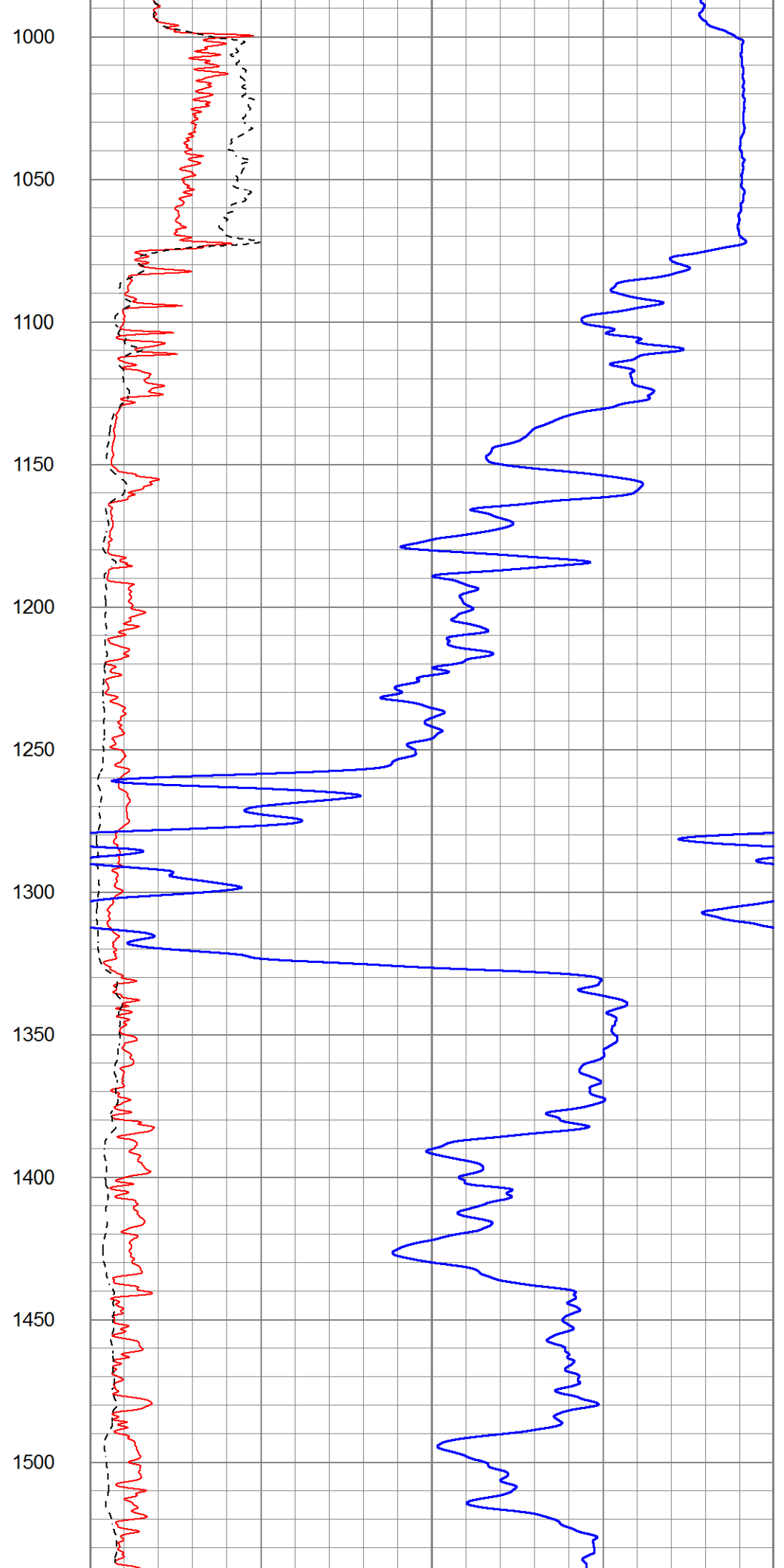
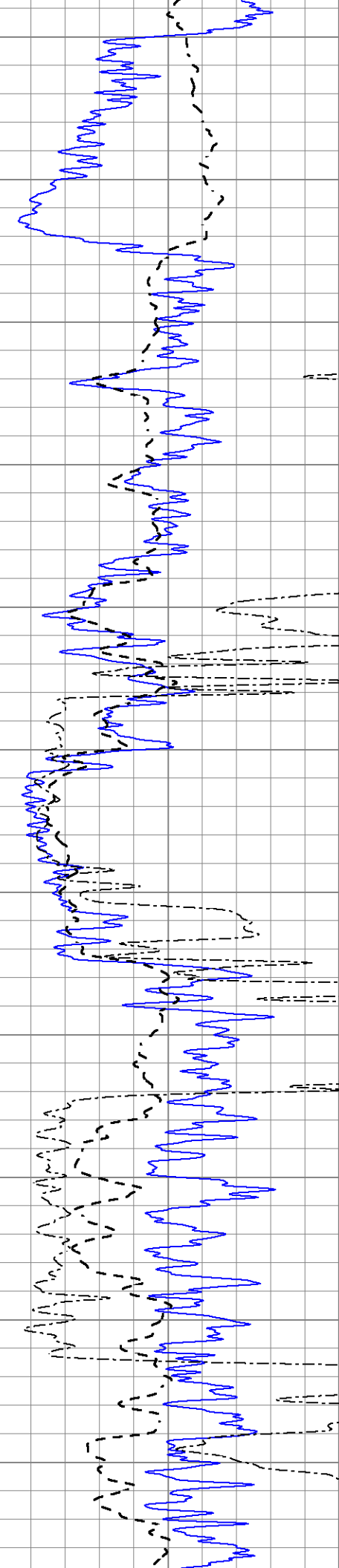
Database File 7090ddn.db  
 Dataset Pathname pass5.1M  
 Presentation Format \_dil2  
 Dataset Creation Sat Oct 08 03:10:07 2022  
 Charted by Depth in Feet scaled 1:600

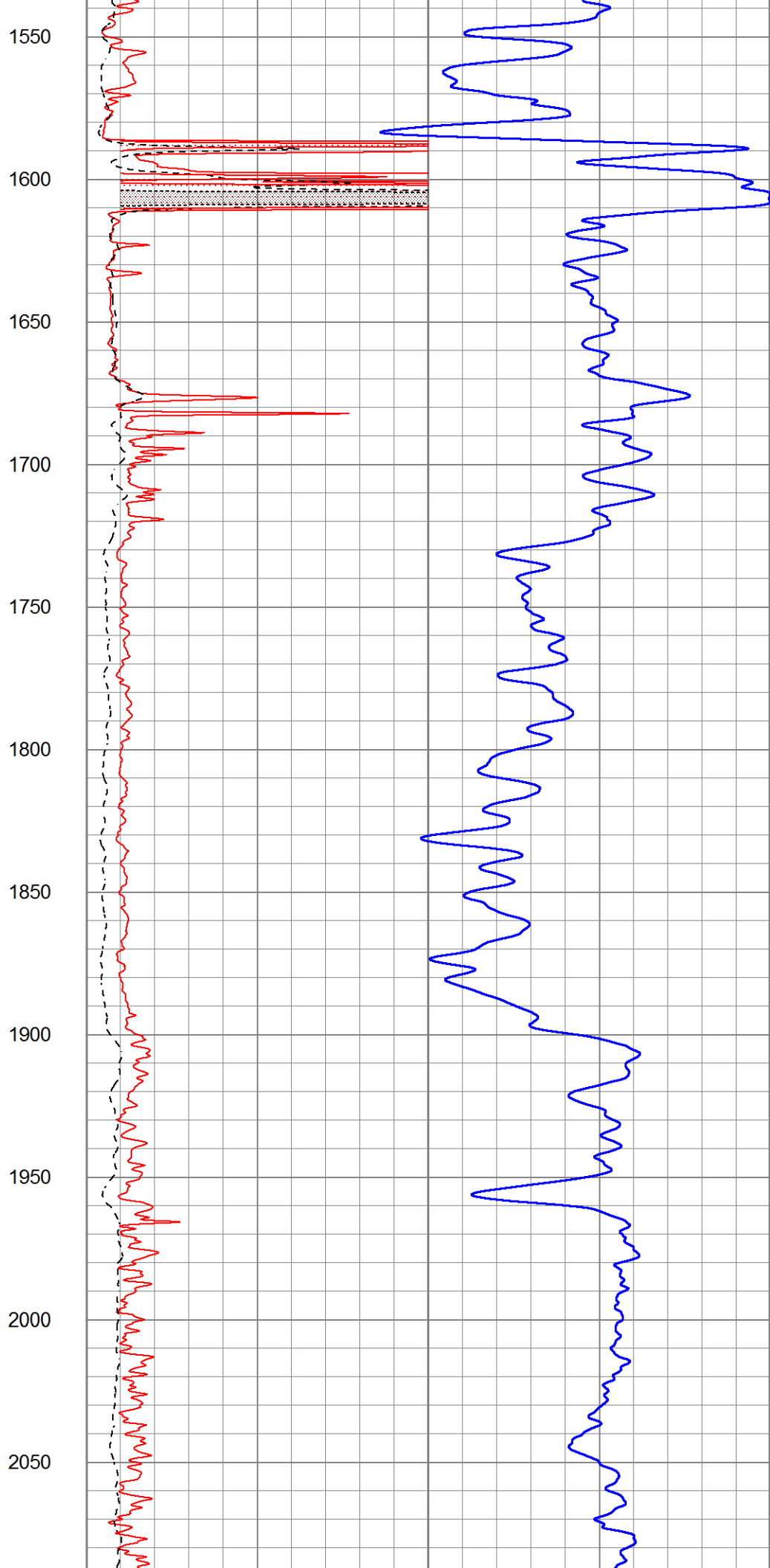
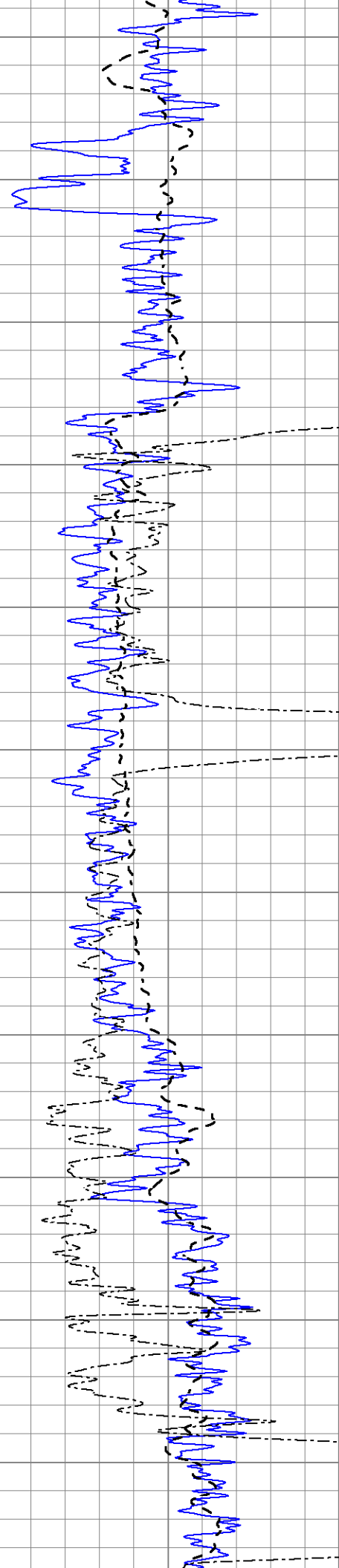
0	Gamma Ray (GAPI)	150
-100	SP (mV)	100
0	RWA (Ohm-m)	1

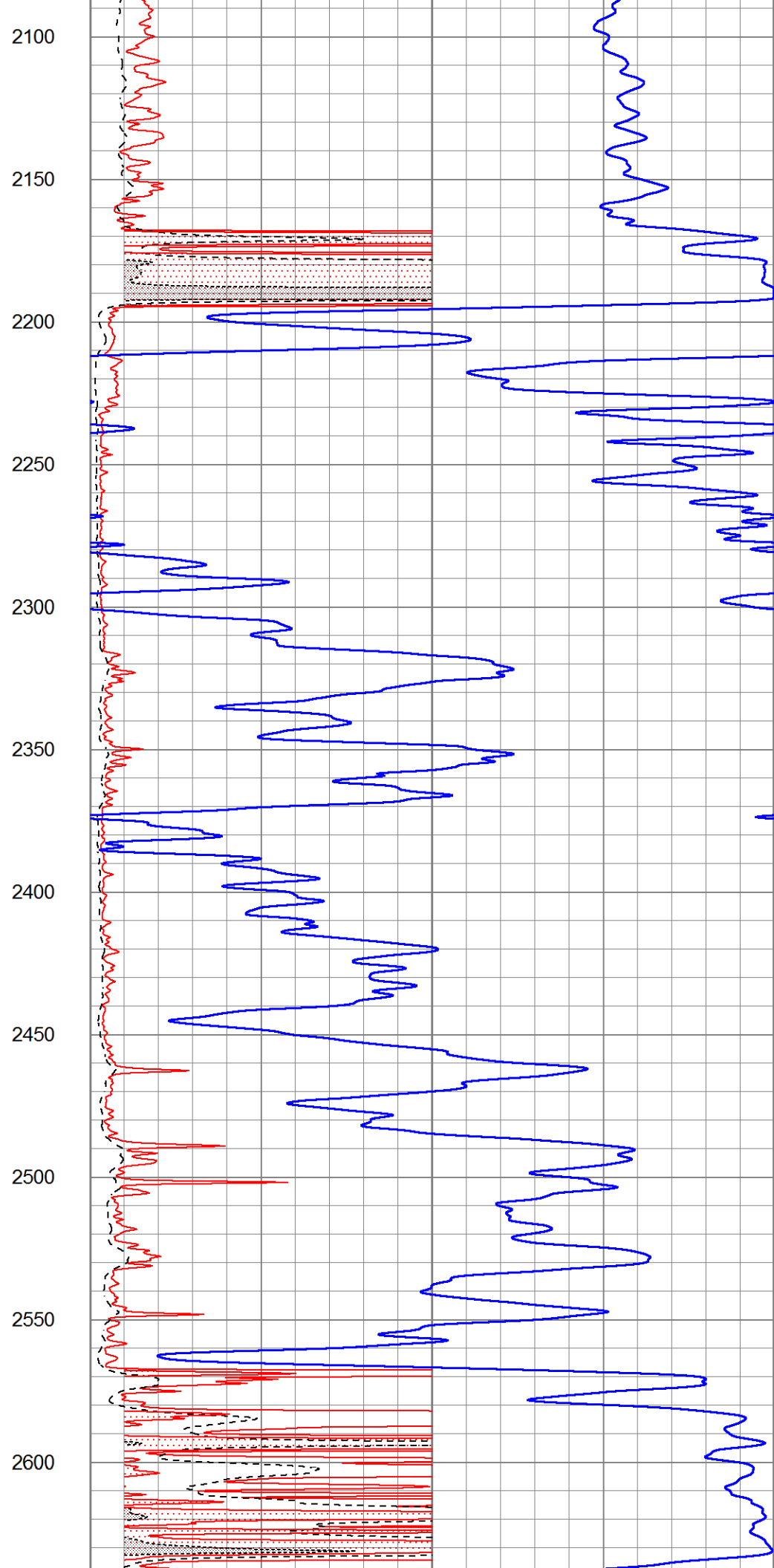
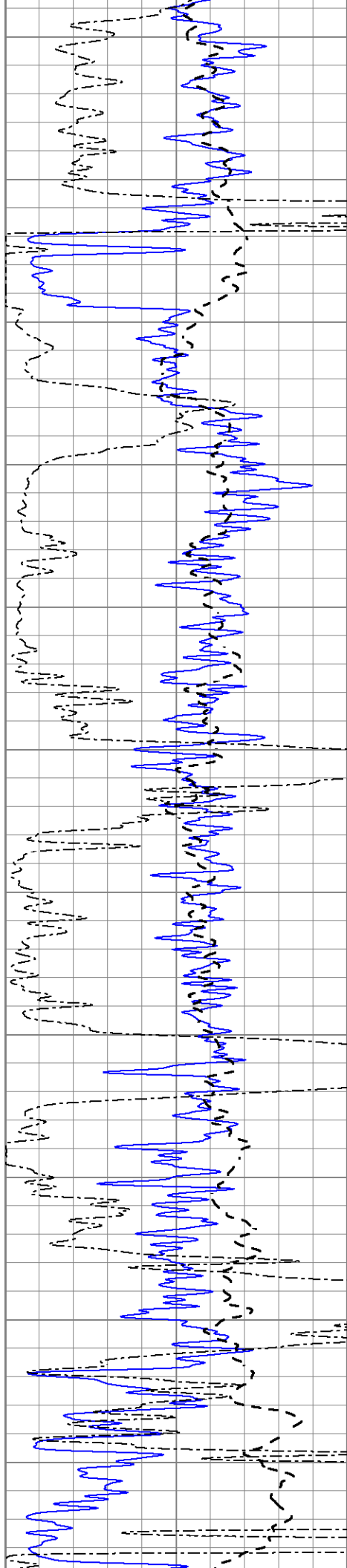
1000	CILD (mmho/m)	0
0	RLL3 (Ohm-m)	50
0	RILD (Ohm-m)	50
50	RILD X10 (Ohm-m)	500
50	RLL3 X10 (Ohm-m)	500

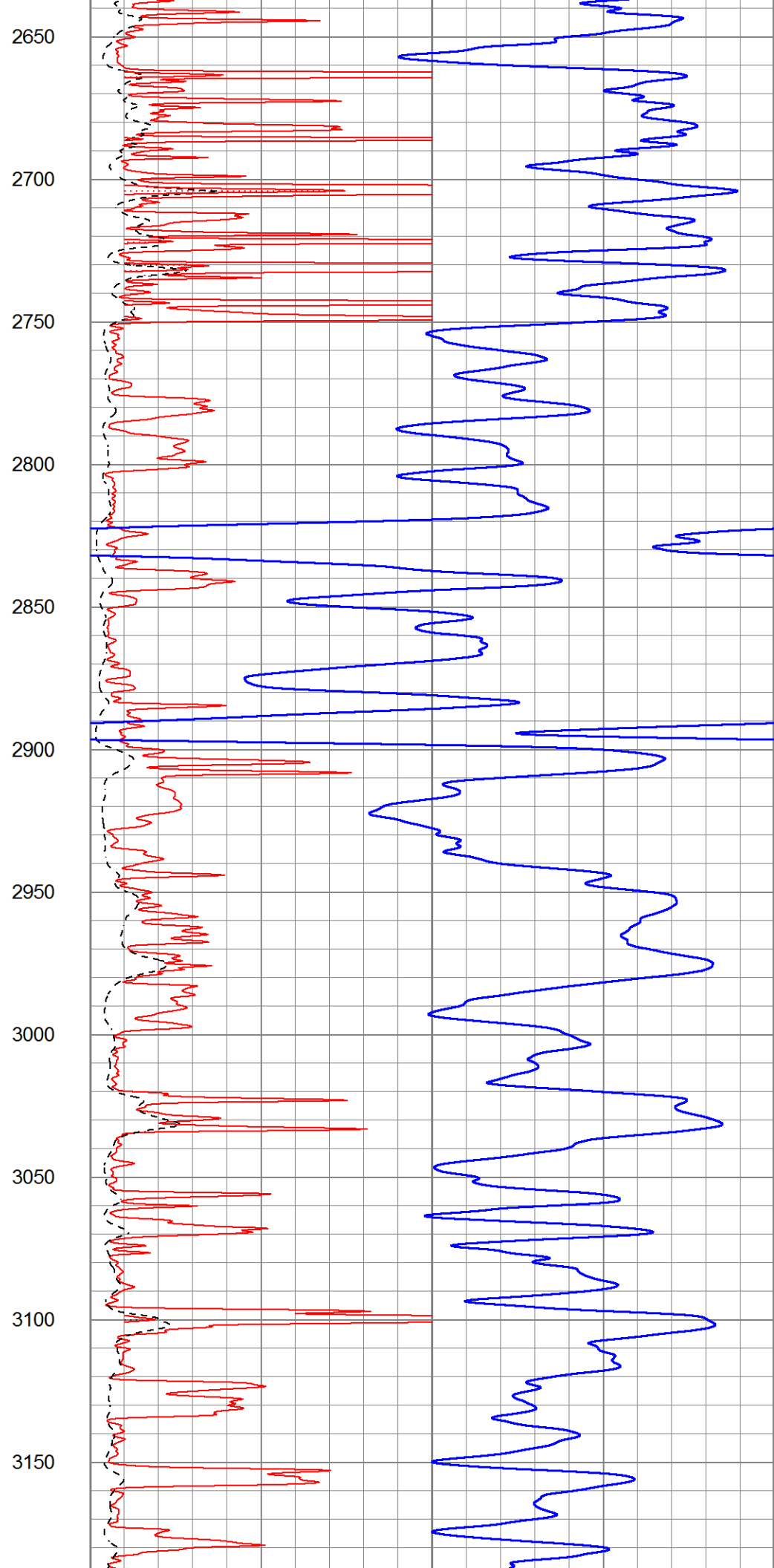
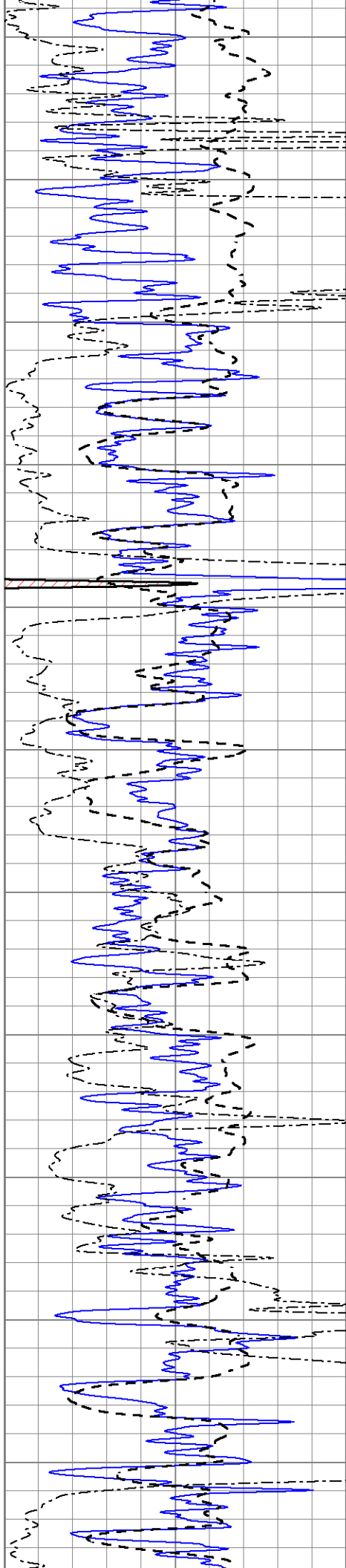


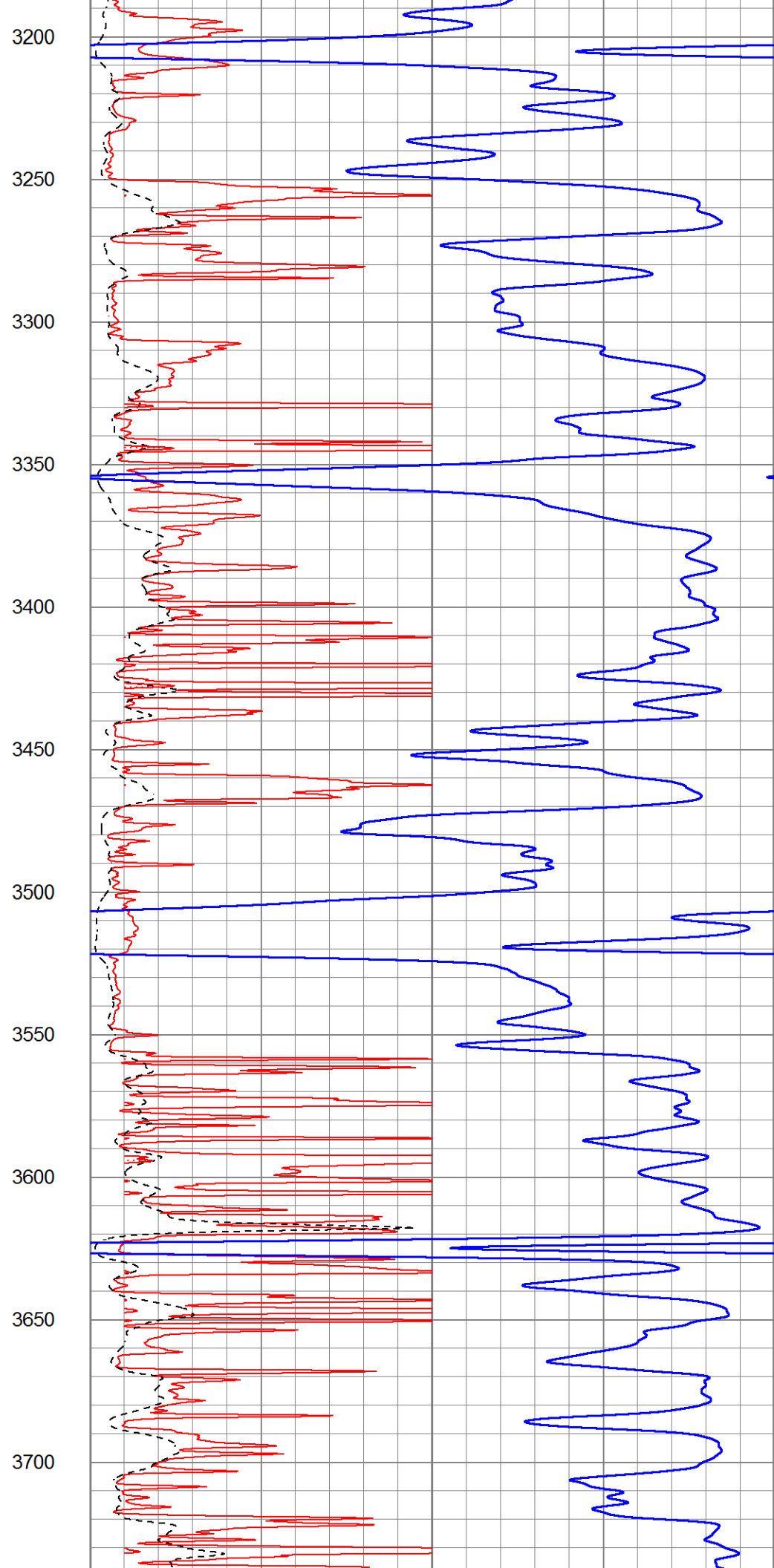
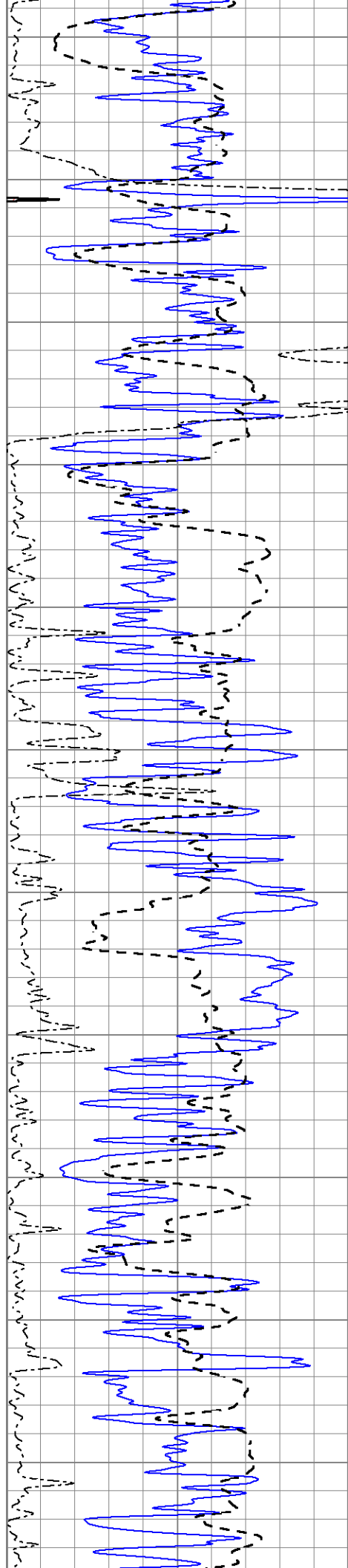


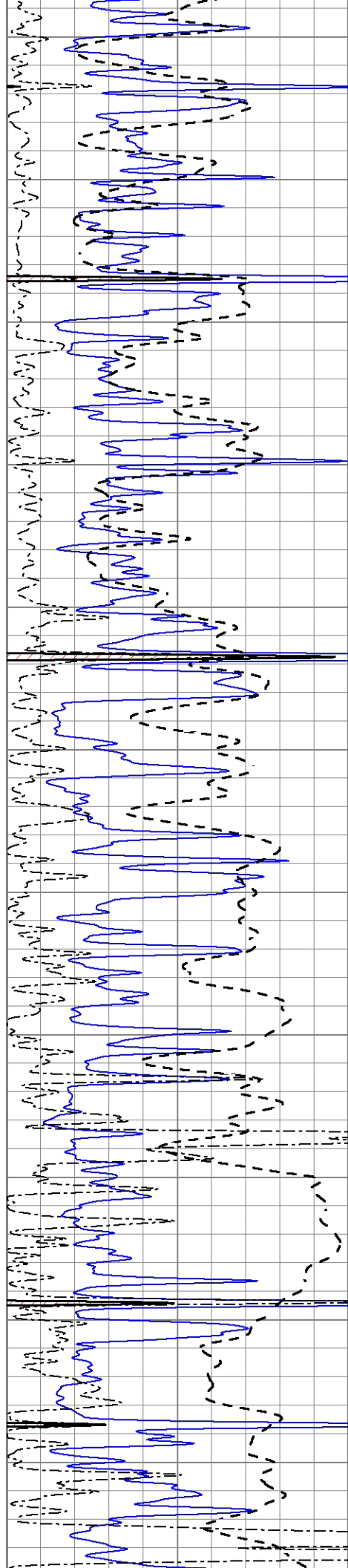












3750

3800

3850

3900

3950

4000

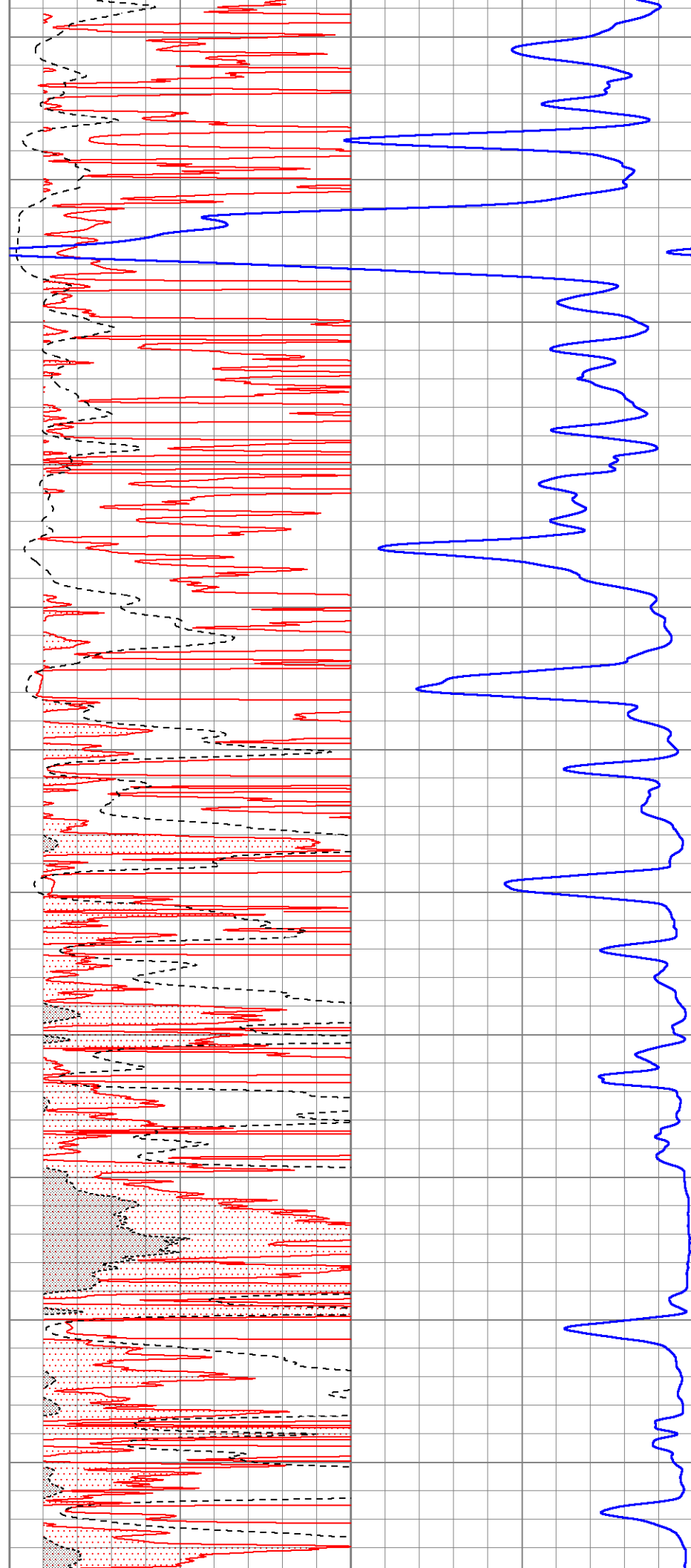
4050

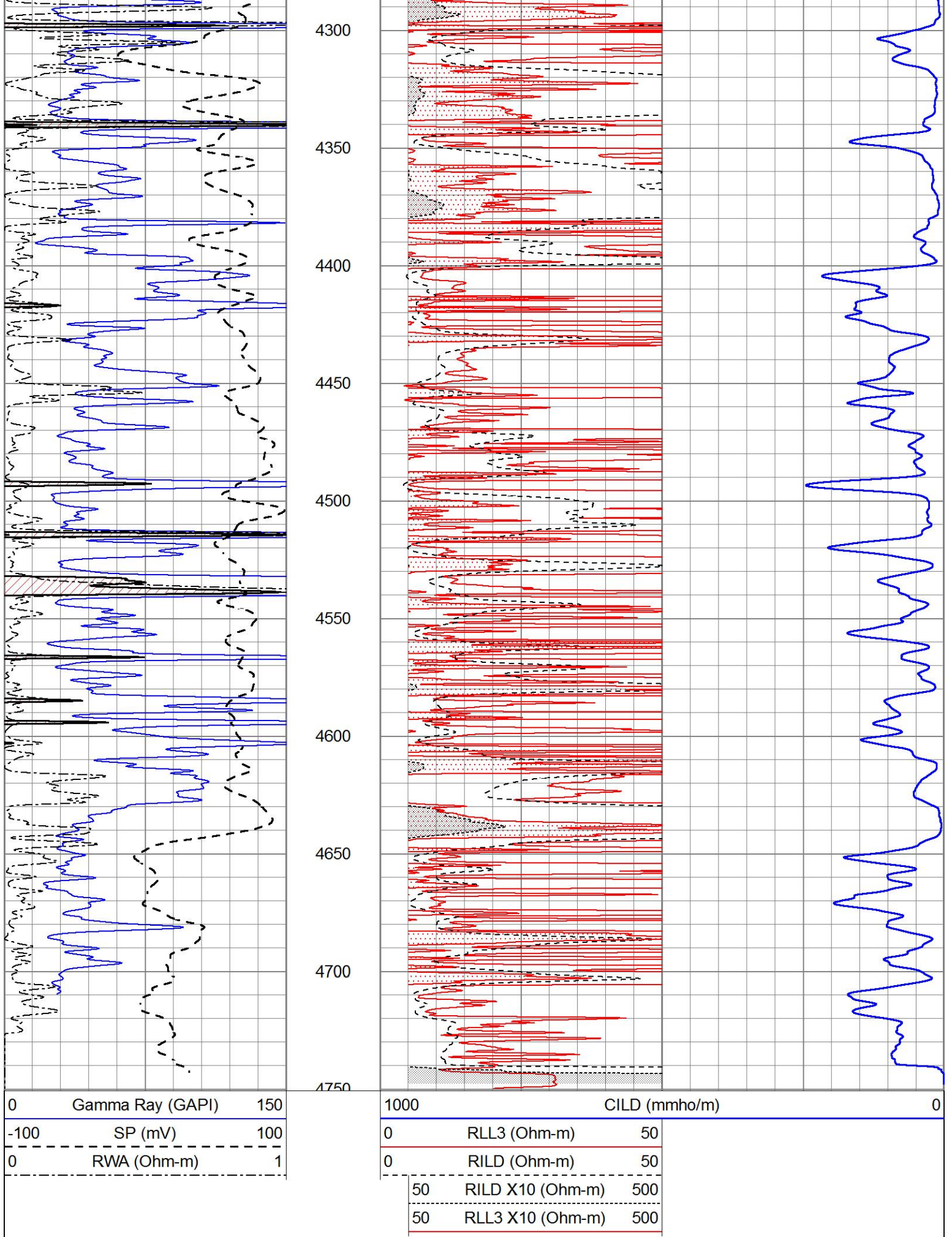
4100

4150

4200

4250





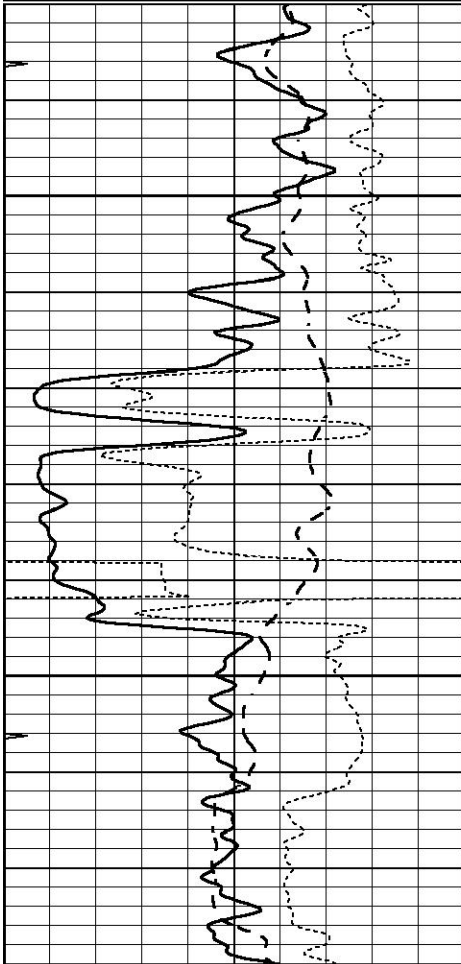


# ANHYDRITE

Database File 7090ddn.db  
 Dataset Pathname pass5.1A  
 Presentation Format \_dil  
 Dataset Creation Sat Oct 08 03:11:22 2022  
 Charted by Depth in Feet scaled 1:240

0	GAMMA RAY (GAPI)	150
-100	SP (mV)	100
-250	Rxo/Rt	50
0	MINMK	20

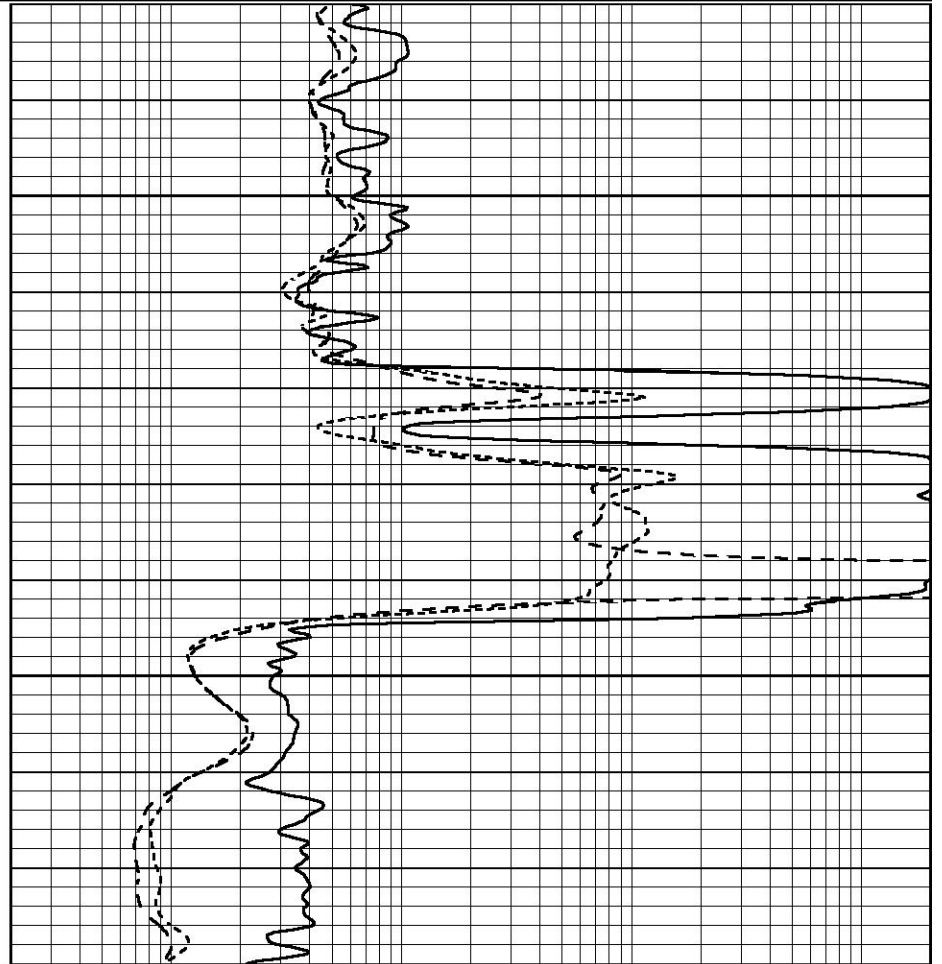
0.2	SHALLOW GUARD (Ohm-m)	2000
0.2	DEEP INDUCTION (Ohm-m)	2000
0.2	MEDIUM INDUCTION (Ohm-m)	2000



2150

2200

0	GAMMA RAY (GAPI)	150
-100	SP (mV)	100
-250	Rxo/Rt	50
0	MINMK	20



0.2	SHALLOW GUARD (Ohm-m)	2000
0.2	DEEP INDUCTION (Ohm-m)	2000
0.2	MEDIUM INDUCTION (Ohm-m)	2000

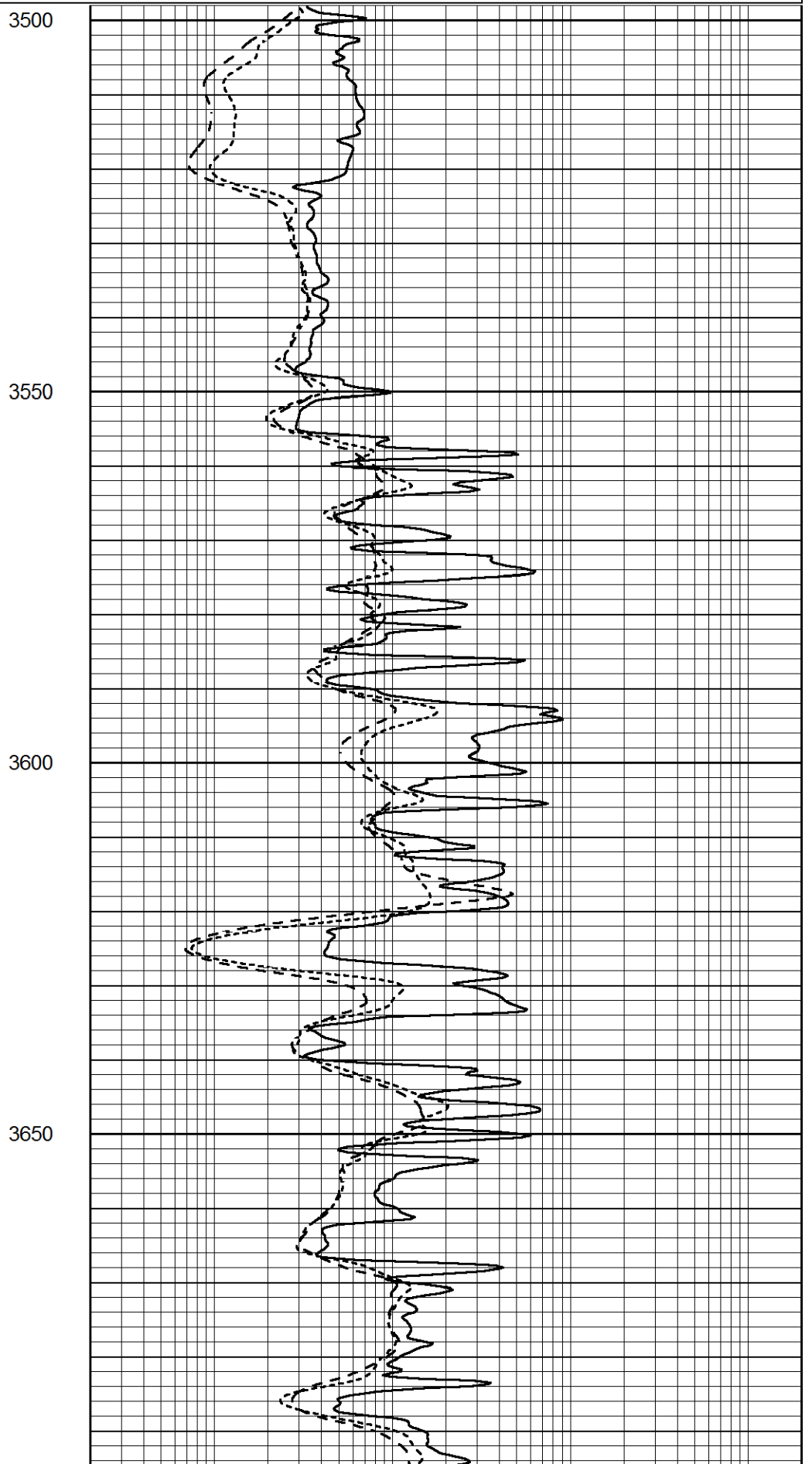
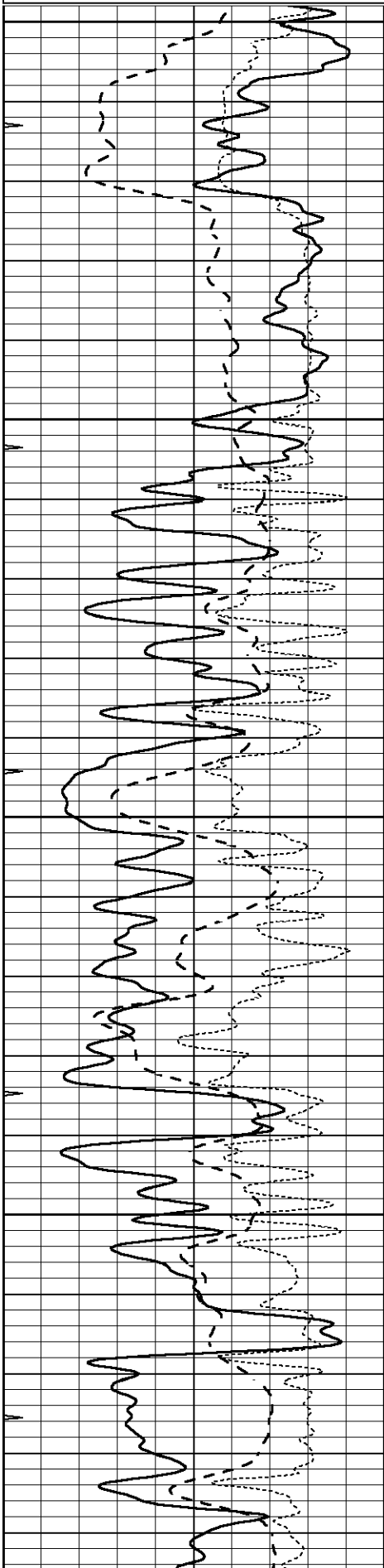


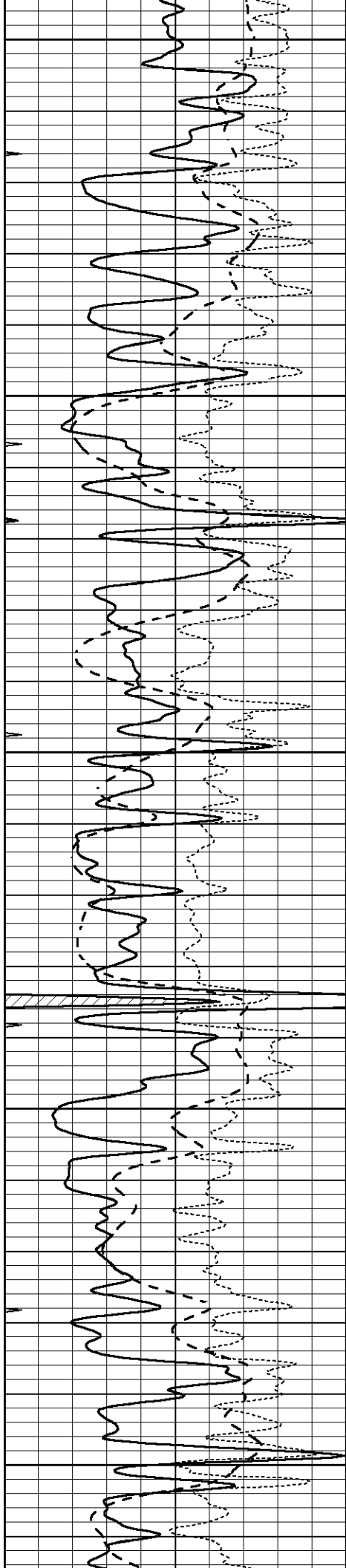
# MAIN SECTION

Database File 7090ddn.db  
 Dataset Pathname pass5.1M  
 Presentation Format \_dil  
 Dataset Creation Sat Oct 08 03:10:07 2022  
 Charted by Depth in Feet scaled 1:240

0	GAMMA RAY (GAPI)	150
-100	SP (mV)	100
-250	Rxo/Rt	50
0	MINMK	20

0.2	SHALLOW GUARD (Ohm-m)	2000
0.2	DEEP INDUCTION (Ohm-m)	2000
0.2	MEDIUM INDUCTION (Ohm-m)	2000





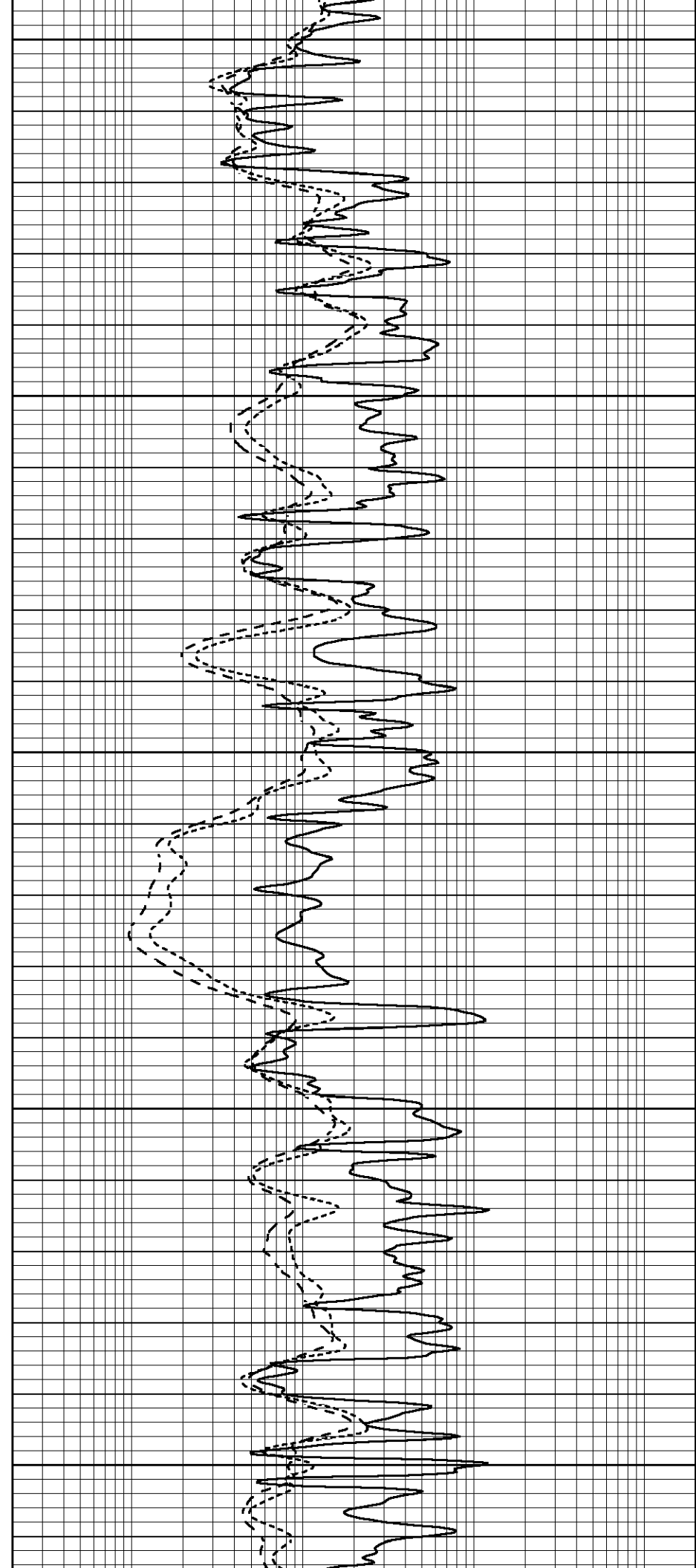
3700

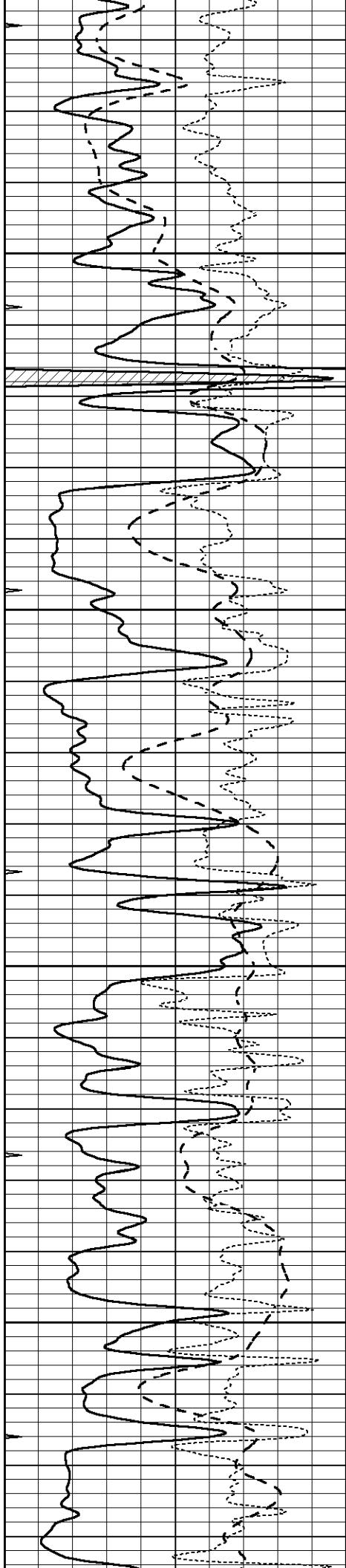
3750

3800

3850

3900



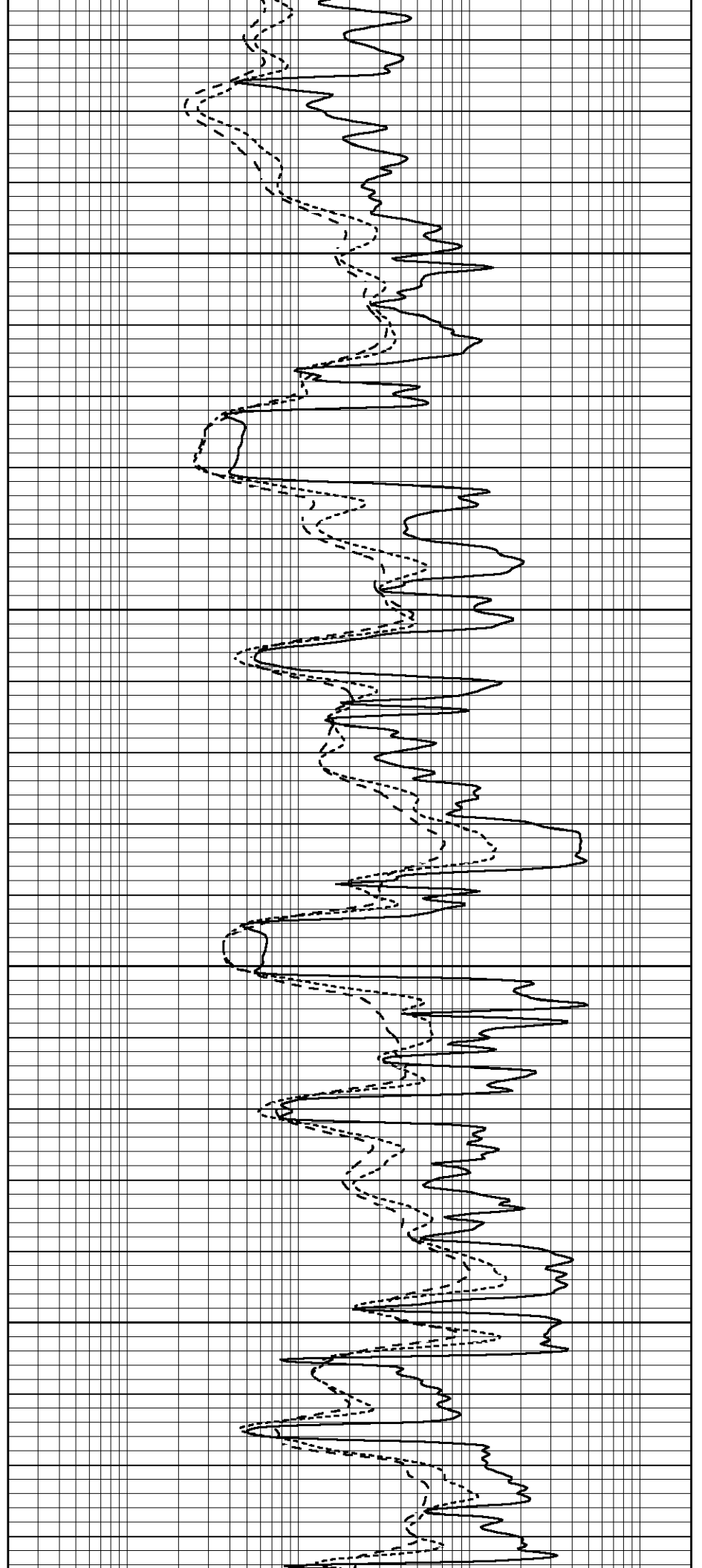


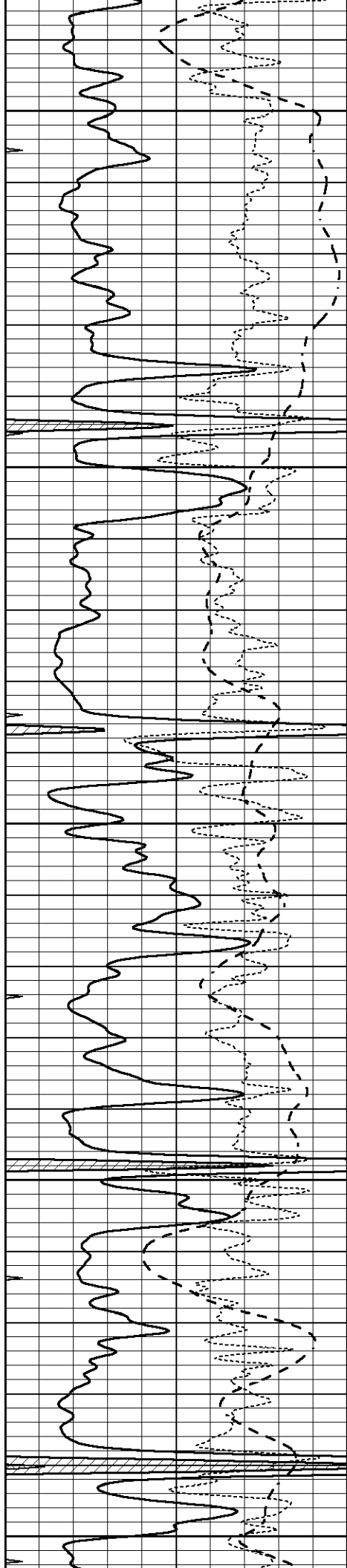
3950

4000

4050

4100





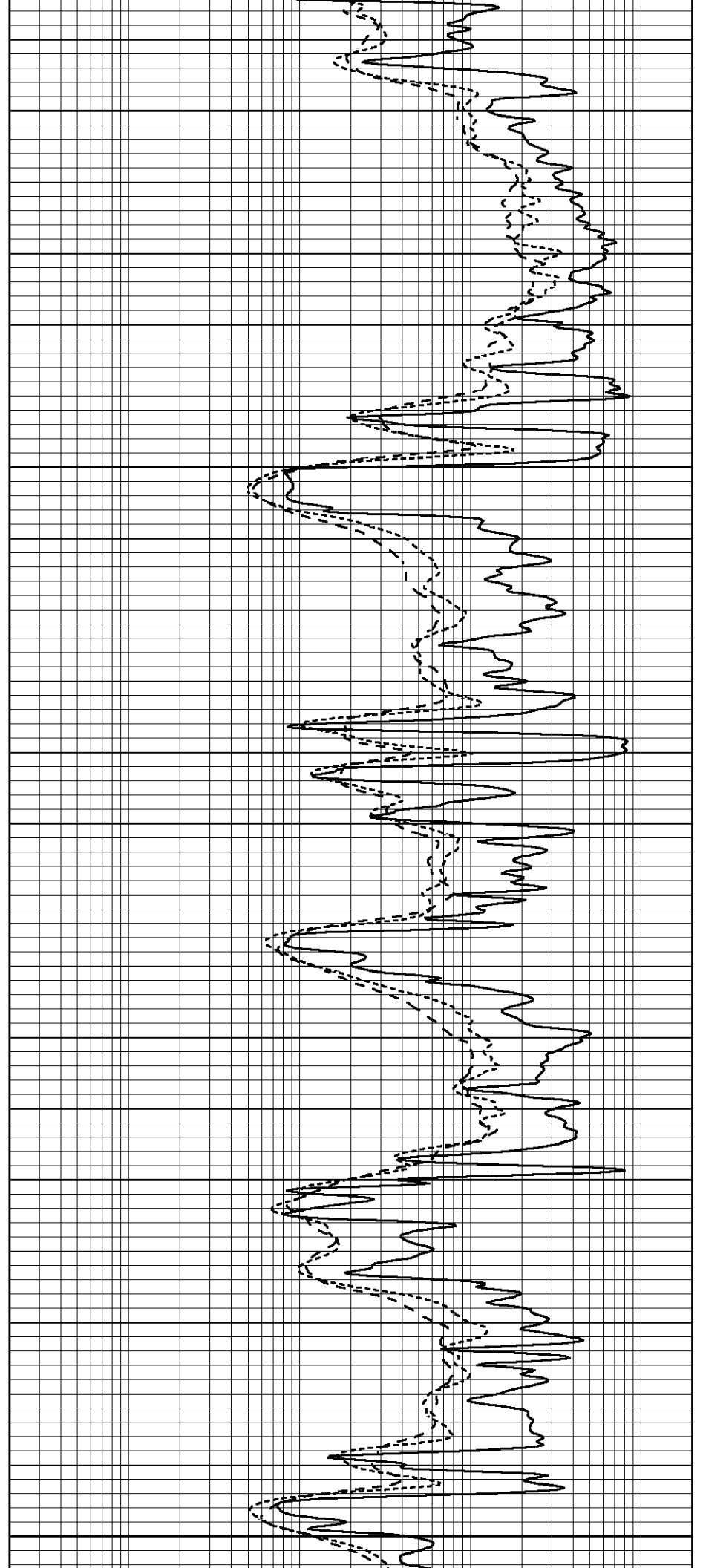
4150

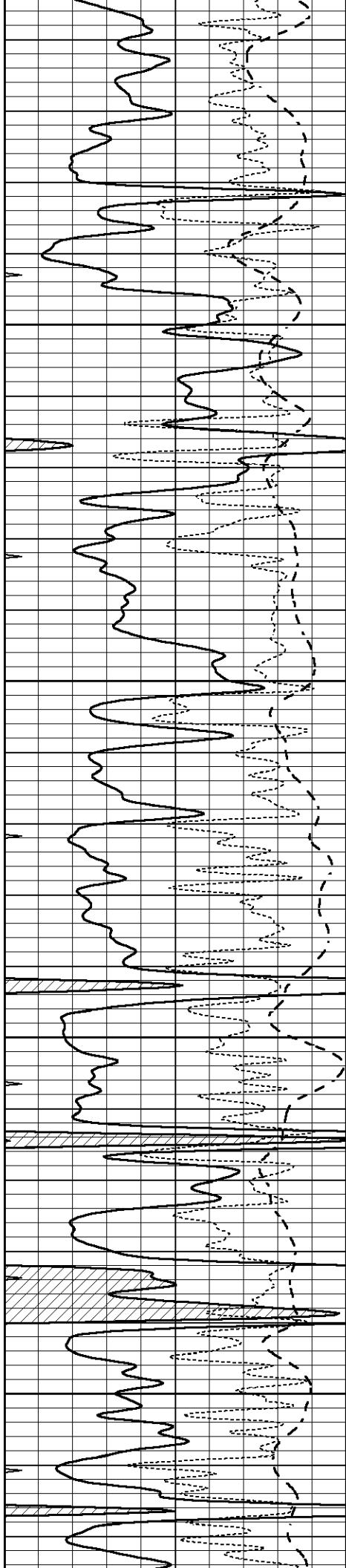
4200

4250

4300

4350



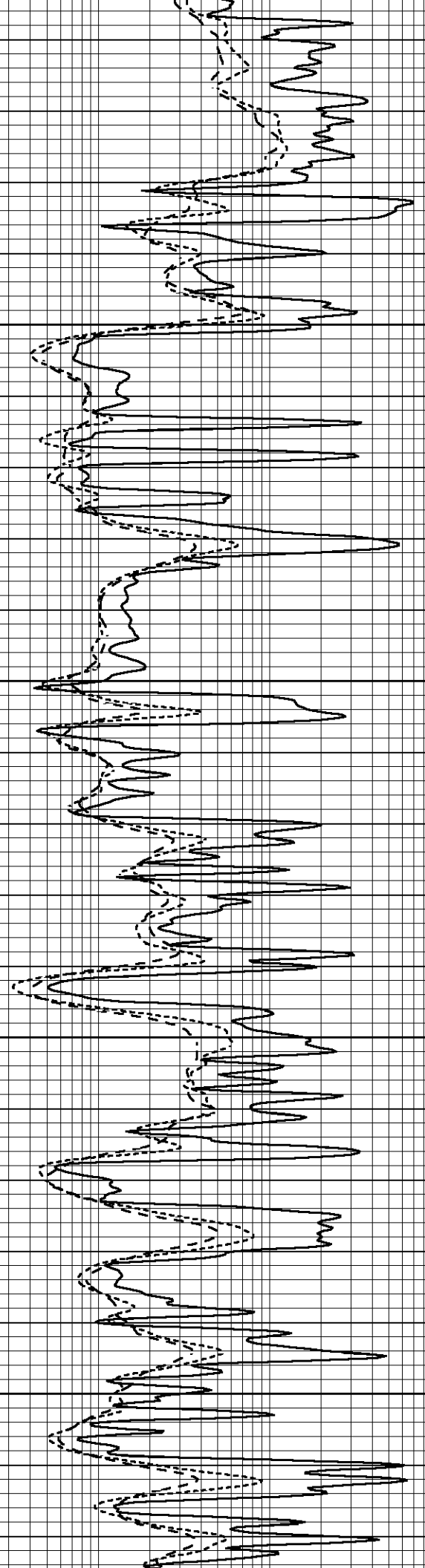


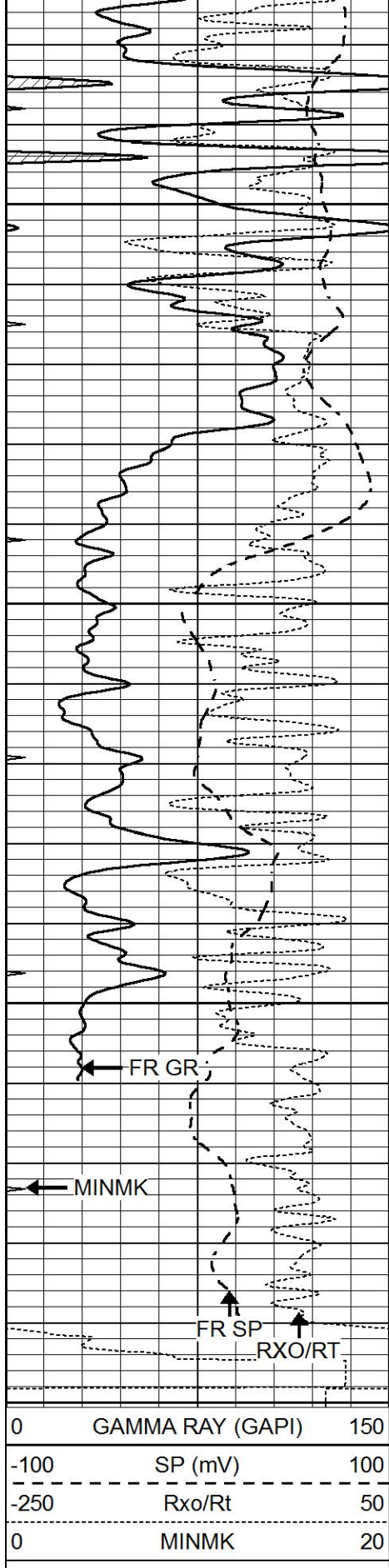
4400

4450

4500

4550





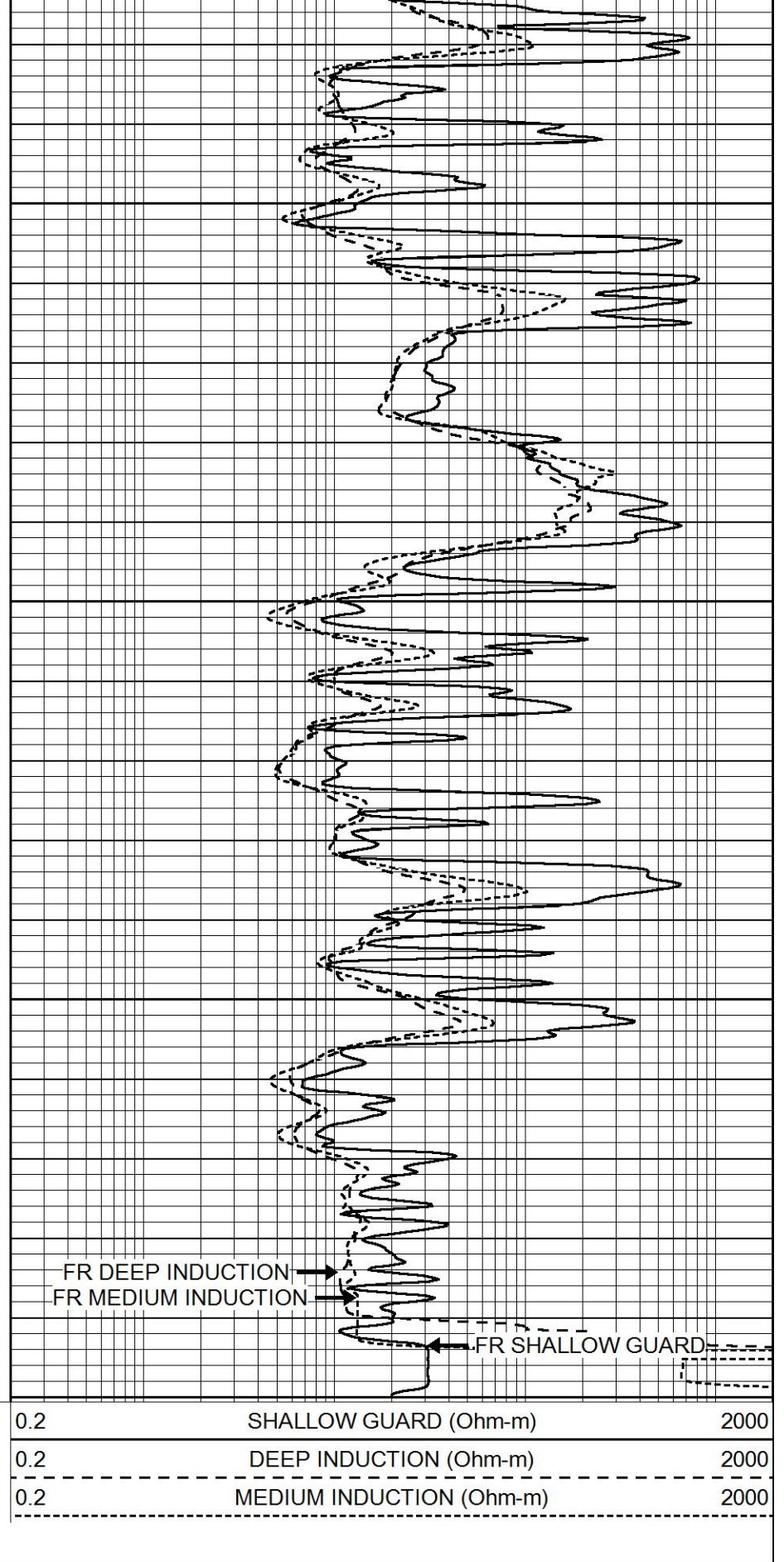
4600

4650

4700

LTD 4746

4750

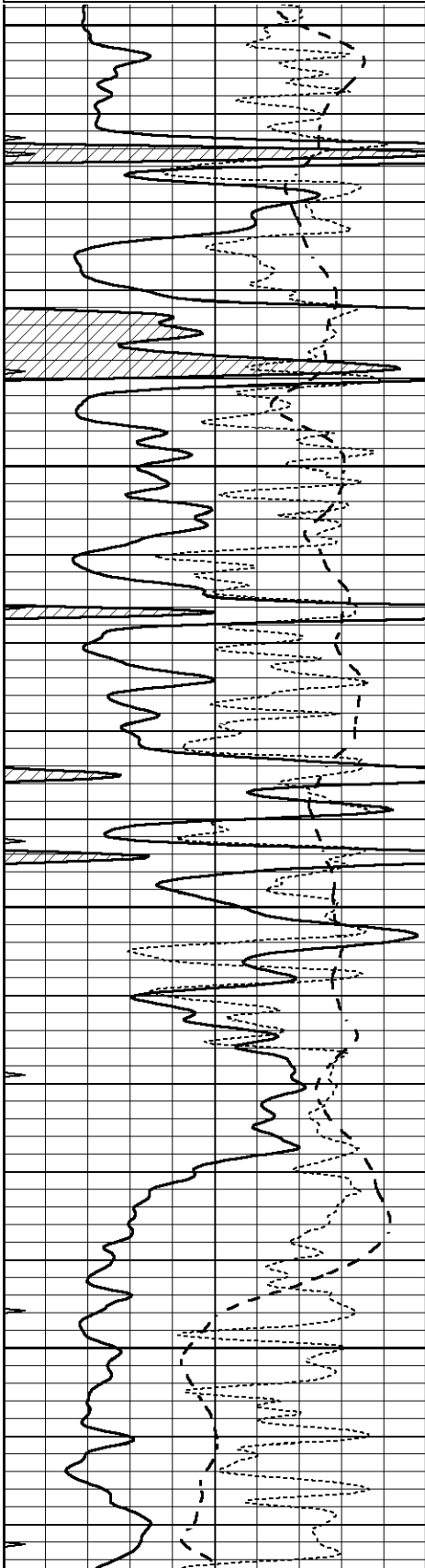


REPEAT SECTION

Database File 7090ddn.db  
 Dataset Pathname pass4.1R  
 Presentation Format \_dil  
 Dataset Creation Sat Oct 08 02:17:08 2022  
 Charted by Depth in Feet scaled 1:240

0	GAMMA RAY (GAPI)	150
-100	SP (mV)	100
-250	Rxo/Rt	50
0	MINMK	20

0.2	SHALLOW GUARD (Ohm-m)	2000
0.2	DEEP INDUCTION (Ohm-m)	2000
0.2	MEDIUM INDUCTION (Ohm-m)	2000

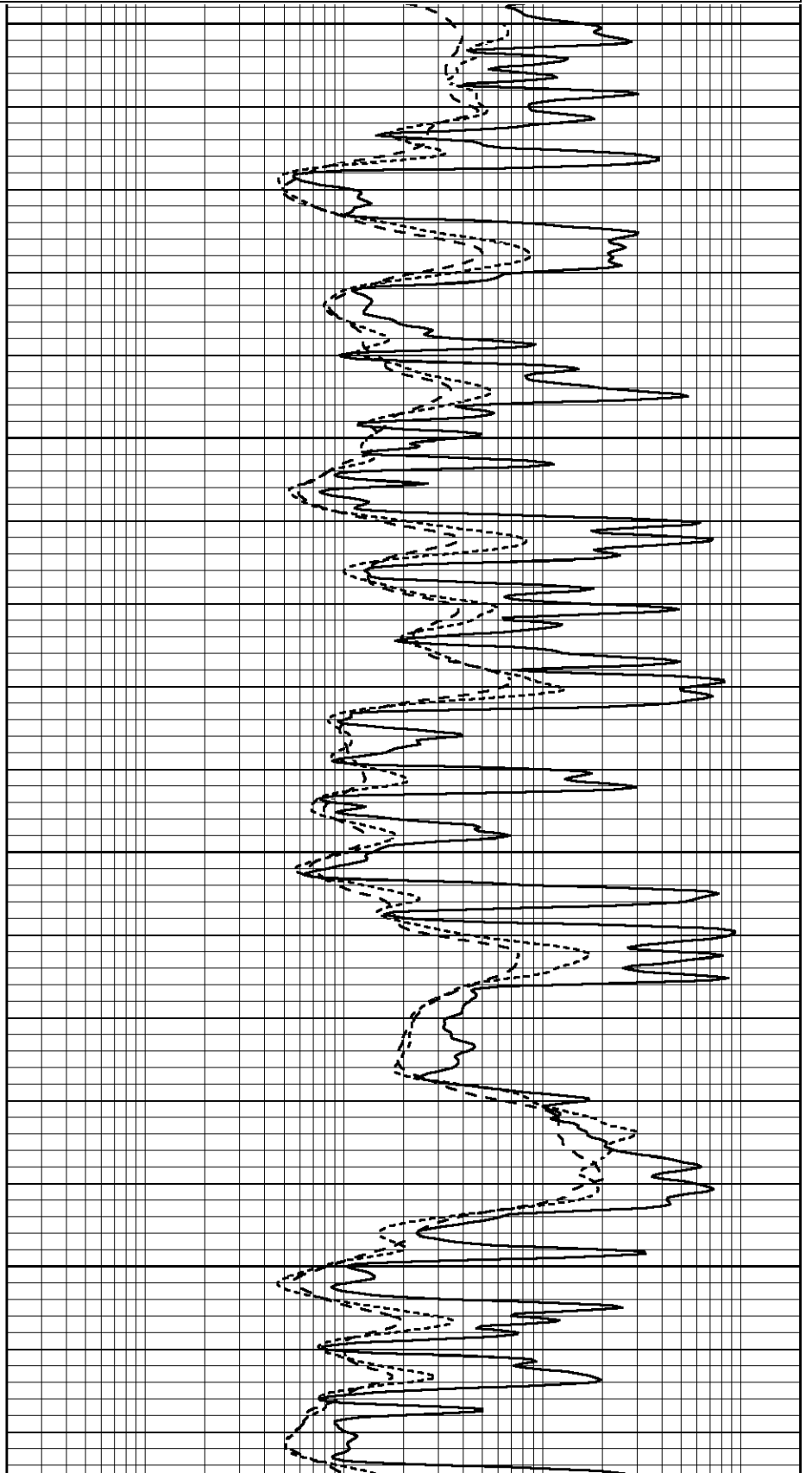


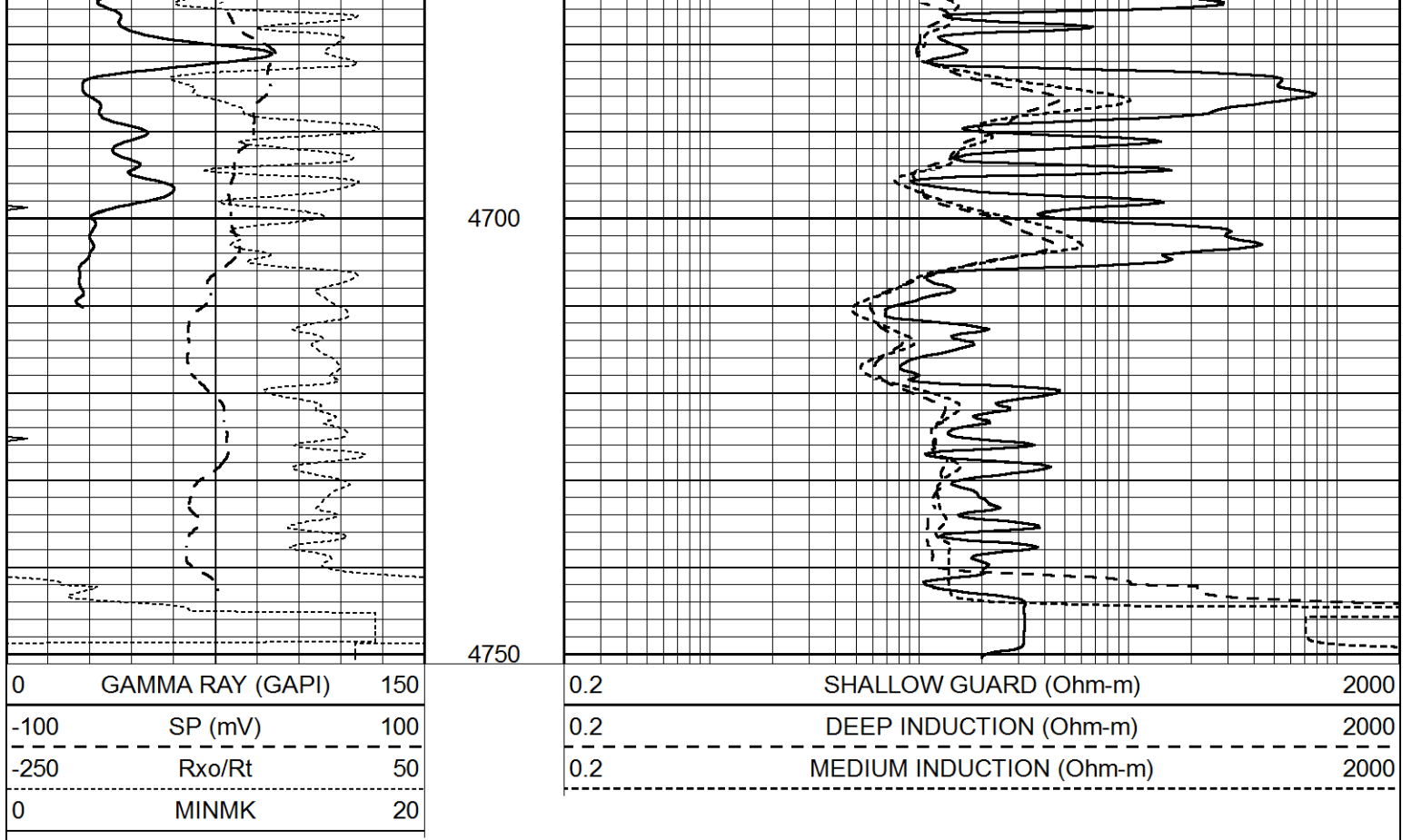
4500

4550

4600

4650





### Calibration Report

Database File 7090ddn.db  
 Dataset Pathname pass5.1M  
 Dataset Creation Sat Oct 08 03:10:07 2022

### Dual Induction Calibration Report

Serial-Model: PROBE8-DILG  
 Surface Cal Performed: Fri Oct 07 13:54:26 2022  
 Downhole Cal Performed: Mon Jul 28 11:08:27 2008  
 After Survey Verification Performed: Mon Jul 28 11:08:27 2008

#### Surface Calibration

Loop:	Readings			References			Results	
	Air	Loop	V	Air	Loop	mmho/m	m	b
Deep	0.015	0.648	V	0.000	400.000	mmho/m	640.000	5.000
Medium	0.029	0.796	V	0.000	464.000	mmho/m	625.000	-5.000
Internal:	Zero	Cal	V	Zero	Cal	mmho/m	m	b
Deep	0.017	0.657	V	0.000	400.000	mmho/m	625.153	-10.619
Medium	0.016	0.757	V	0.000	464.000	mmho/m	625.992	-9.739

#### Downhole Calibration

	Readings			References			Results	
	Zero	Cal	V	Zero	Cal	mmho/m	m'	b'
Deep	0.000	0.000	V	2.011	405.777	mmho/m	1.000	0.000
Medium	0.000	0.000	V	7.590	503.393	mmho/m	1.000	0.000
LL3		7.500	V		1500.000	Ohm-m		
		0.000	V		20.000	Ohm-m		
		-7.200	V		3800.000	mmho-m		

After Survey Verification

Readings

Targets

Results

	Zero	Cal		Zero	Cal		m'	b'
Deep	0.000	0.000	mmho/m	0.000	0.000	mmho/m	0.000	0.000
Medium	0.000	0.000	mmho/m	0.000	0.000	mmho/m	0.000	0.000
LL3		1.000	Ohm-m		1.000	Ohm-m		
		0.000	Ohm-m		0.000	Ohm-m		
		1.000	mmho-m		1.000	mmho-m		

Litho Density Calibration Report  
Serial: 001 Model: PRB

Master Calibration

Performed Tue Aug 02 14:54:49 2022

	Background	Magnesium	Aluminum	Aluminum+Fe	
Window 1	1540.1	9840.1	3279.8	3001.8	cps
Window 2	1435.6	8495.4	2920.3	2720.3	cps
Window 3	1167.4	4527.9	1868.6	1810.1	cps
Window 4	344.6	343.5	346.7	342.3	cps
Long Space	0.0	7059.8	1484.8	1284.7	cps
Short Space	3.3	2502.7	1618.3	1368.5	cps
Rho		1.7100	2.5900	0.0000	g/cc
Pe		2.0000	2.7500	5.7900	
Rib Angle	: 44.4	Rib Slope	: 0.979	Density/Spine Ratio	: 0.544
Spine Angle	: 74.4	Spine Slope	: 3.576	Spine Intercept	: -19.1

Before Survey Verification

Performed Wed Dec 31 18:00:00 1969

Window 1	0.0	0.0	0.0	0.0	cps
Window 2	0.0	0.0	0.0	0.0	cps
Window 3	0.0	0.0	0.0	0.0	cps
Window 4	0.0	0.0	0.0	0.0	cps
Long Space	0.0	0.0	0.0	0.0	cps
Short Space	0.0	0.0	0.0	0.0	cps
Measured Rho		0.0000	0.0000	0.0000	g/cc
Measured Correction		0.0000	0.0000	0.0000	g/cc
Measured Pe			0.0000	0.0000	

After Survey Verification

Performed Wed Dec 31 18:00:00 1969

Window 1	0.0	0.0	0.0	0.0	cps
Window 2	0.0	0.0	0.0	0.0	cps
Window 3	0.0	0.0	0.0	0.0	cps
Window 4	0.0	0.0	0.0	0.0	cps
Long Space	0.0	0.0	0.0	0.0	cps
Short Space	0.0	0.0	0.0	0.0	cps
Measured Rho		0.0000	0.0000	0.0000	g/cc
Measured Correction		0.0000	0.0000	0.0000	g/cc
Measured Pe			0.0000	0.0000	

Compensated Neutron Calibration Report

Serial Number: 070808PMC  
Tool Model: NABORS

PRE-SURVEY VERIFICATION

Detector	Readings	Measured	Target
Short Space	cps		
Long Space	cps	pu	pu

POST-SURVEY VERIFICATION

Detector	Readings	Measured	Target
Short Space	cps		
Long Space	cps	pu	pu

Gamma Ray Calibration Report

Serial Number:	070558		
Tool Model:	OPEN_GR		
Performed:	Sat Oct 08 02:49:45 2022		
Calibrator Value:	1.0	GAPI	
Background Reading:	0.0	cps	
Calibrator Reading:	1.0	cps	
Sensitivity:	0.3000	GAPI/cps	