



MICRO
LOG

Company PALOMINO PETROLEUM
Well DR. NO #1
Field BUERKLE NORTHWEST
County SCOTT
State KS

Company PALOMINO PETROLEUM
Well DR. NO #1
Field BUERKLE NORTHWEST
County SCOTT State KS

Location: API #: 15 171 21304
818' FNL & 1453' FEL
SEC 30 TWP 20S RGE 33W
Permanent Datum Ground Level Elevation 2946
Log Measured From KB 5' AGL
Drilling Measured From KB
Other Services
POR
DIL
Elevation
K.B. 2951
D.F. 2949
G.L. 2946

Date	12/04/22
Run Number	TWO
Depth Driller	4880
Depth Logger	4880
Bottom Logged Interval	4878
Top Log Interval	3350
Casing Driller	8 5/8" @ 220
Casing Logger	220
Bit Size	7 7/8"
Type Fluid in Hole	Chemical
Density / Viscosity	9.6/52
pH / Fluid Loss	10.5/9.2
Source of Sample	Pit
Rm @ Meas. Temp	.85@70degf
Rmf @ Meas. Temp	.64@70degf
Rmc @ Meas. Temp	1.02@70degf
Source of Rmf / Rmc	Calculated
Rm @ BHT	.54@110degf
Time Circulation Stopped	2:30 P.M.
Time Logger on Bottom	5:00 PM
Maximum Recorded Temperature	110degf
Equipment Number	T605
Location	Hays, KS
Recorded By	GUS PFANENSTIEL
Witnessed By	KIM SHOEMAKER

<<< Fold Here >>>

All interpretations are opinions based on inferences from electrical or other measurements and we cannot and do not guarantee the accuracy or correctness of any interpretation, and we shall not, except in the case of gross or willful negligence on our part, be liable or responsible for any loss, costs, damages, or expenses incurred or sustained by anyone resulting from any interpretation made by any of our officers, agents or employees. These interpretations are also subject to our general terms and conditions set out in our current Price Schedule.

Comments

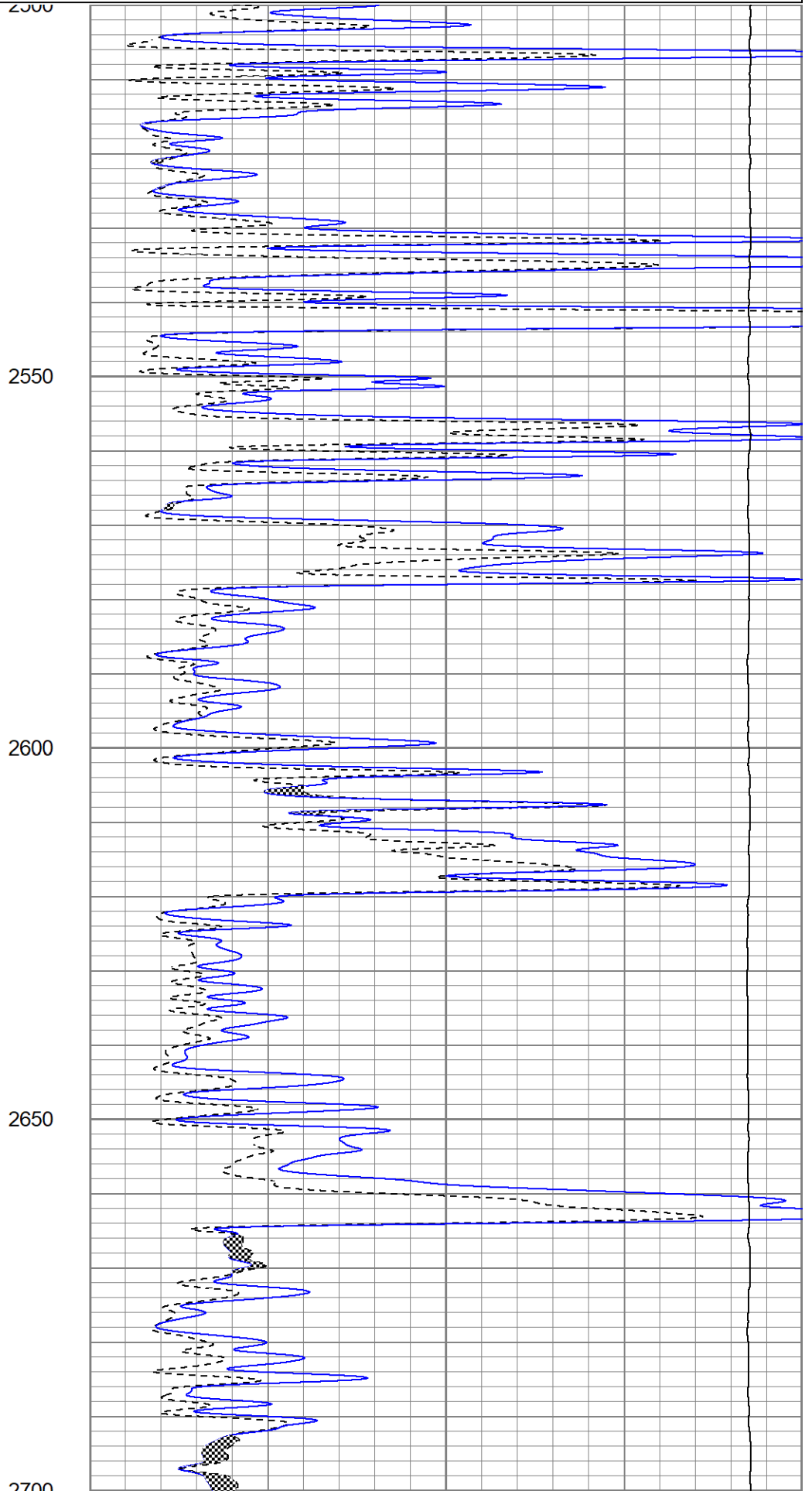
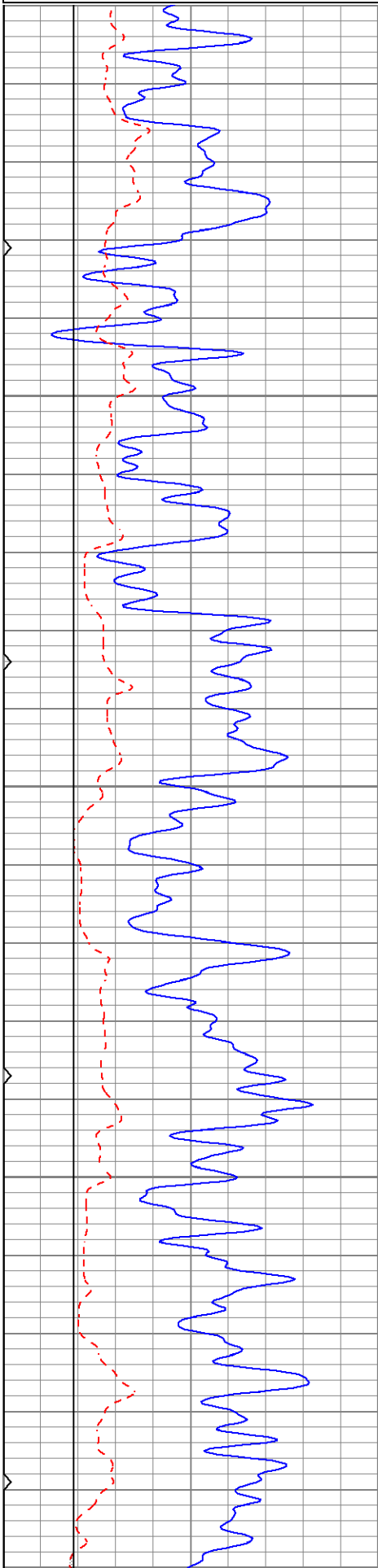
SOUTH OF SCOTT CITY TO COUNTY LINE WEST TO FALCON RD
NORTH 1 MILE, WEST INTO.

Thank You for using Gemini Wireline LLC
785-625-1182

Database File ppdno#1oh.db
Dataset Pathname pass8
Presentation Format kml
Dataset Creation Sun Dec 04 20:00:57 2022
Charted by Depth in Feet scaled 1:240

0	GR (GAPI)	150
6	MCAL (in)	16
6	BOREID (in)	16
0	MINMK	50

0	MN 2" (Ohm-m)	20
0	MI 1" (Ohm-m)	20
10000	LTEN (lb)	0



0	GR (GAPI)	150
6	MCAL (in)	16
6	BOREID (in)	16
0	MINMK	50

0	MN 2" (Ohm-m)	20
0	MI 1" (Ohm-m)	20
10000	LTEN (lb)	0

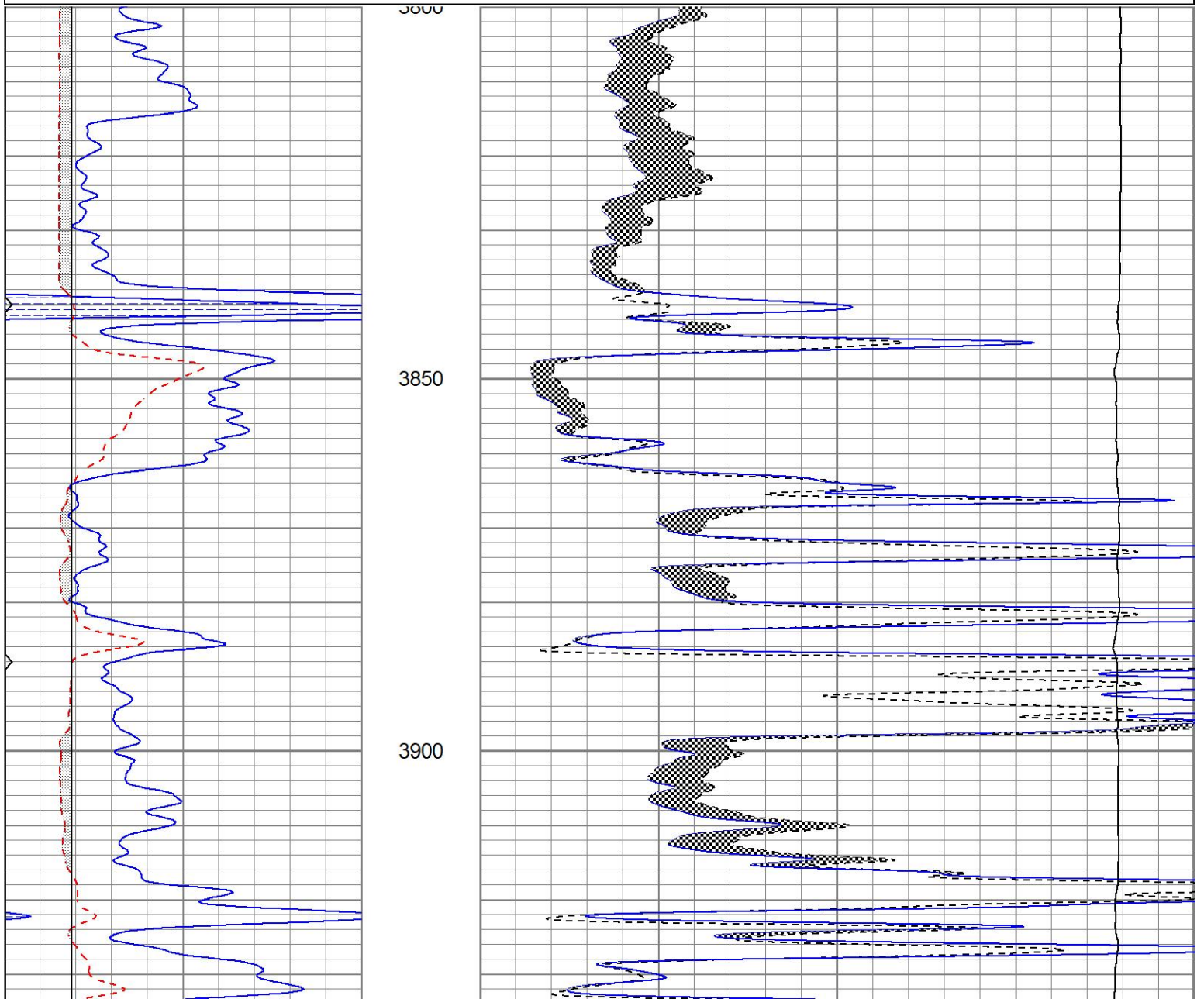


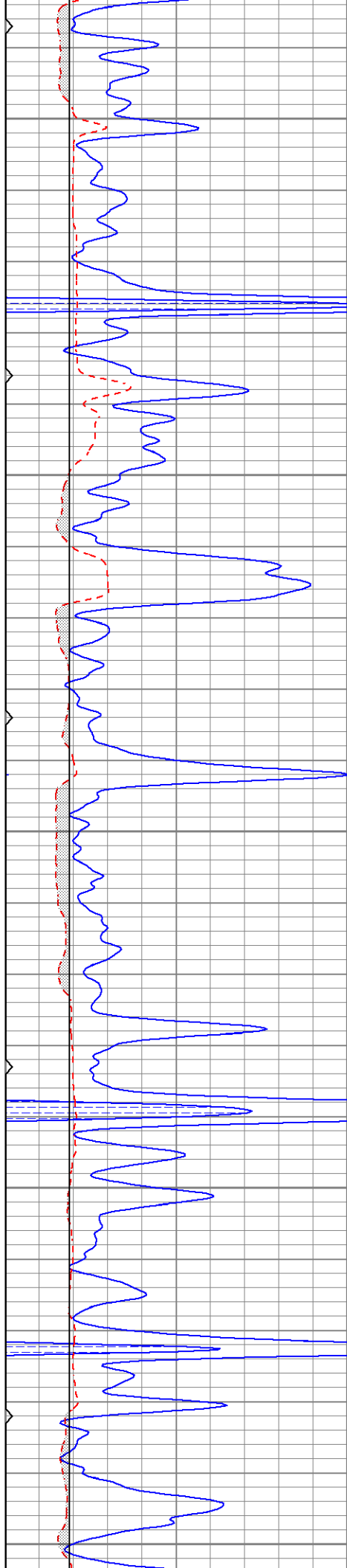
MAIN PASS

Database File pprno#1oh.db
 Dataset Pathname pass7.1
 Presentation Format kml
 Dataset Creation Sun Dec 04 20:02:31 2022
 Charted by Depth in Feet scaled 1:240

0	GR (GAPI)	150
6	MCAL (in)	16
6	BOREID (in)	16
0	MINMK	50

0	MN 2" (Ohm-m)	20
0	MI 1" (Ohm-m)	20
10000	LTEN (lb)	0





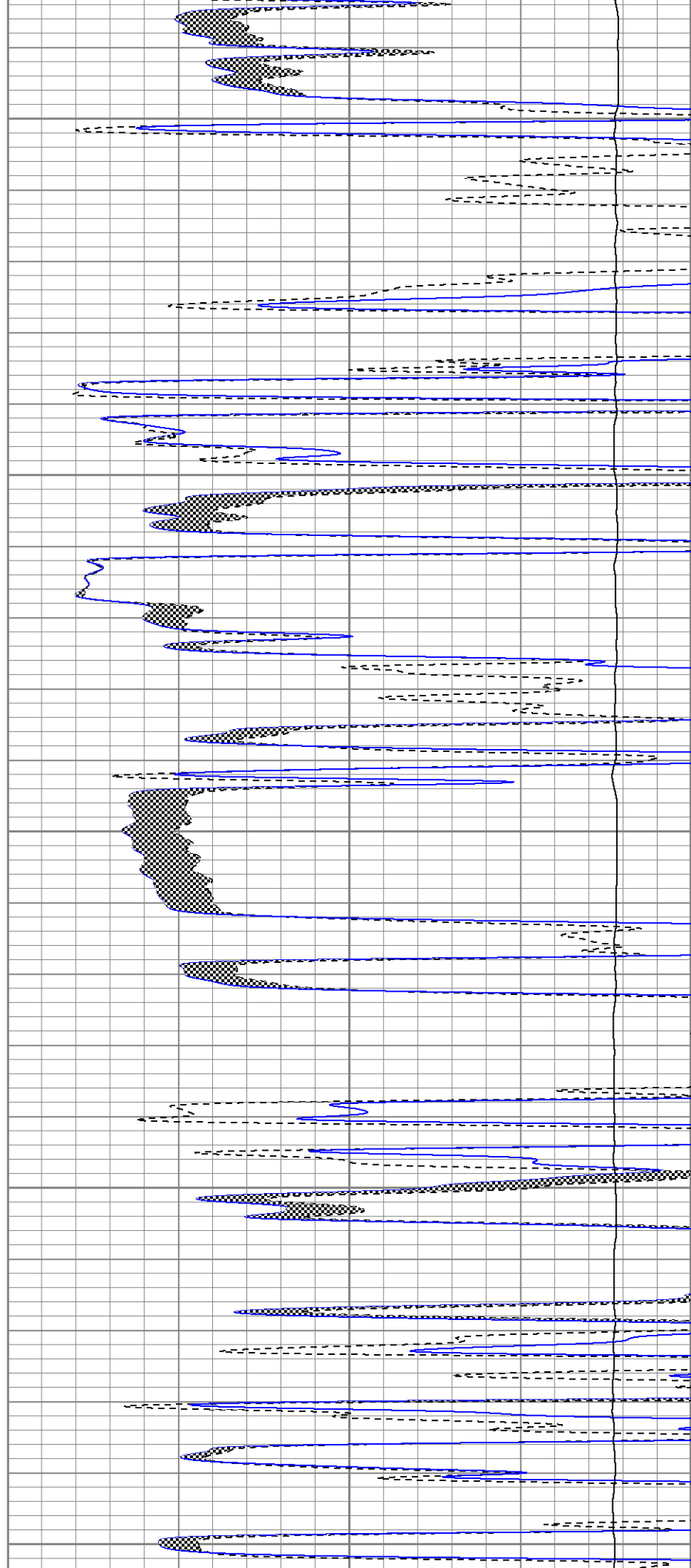
3950

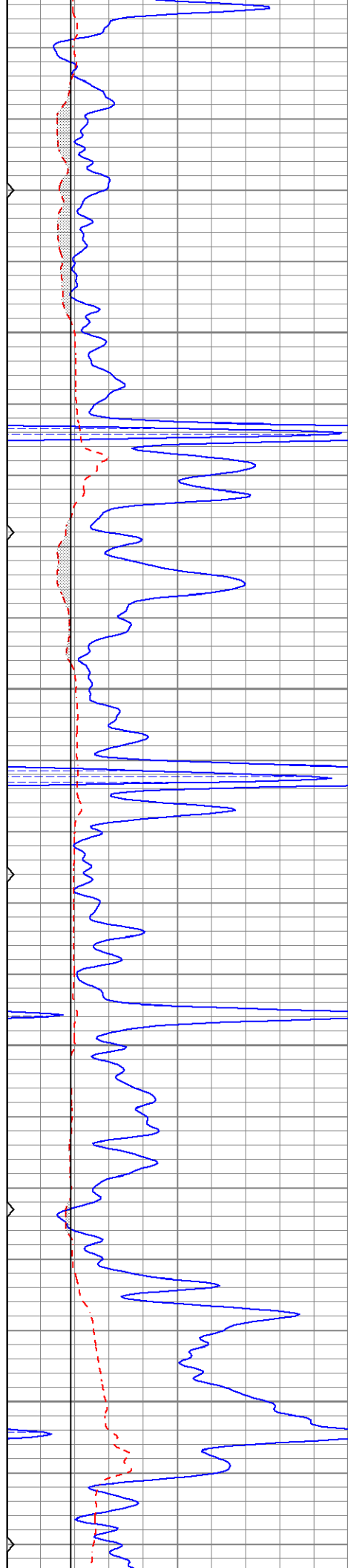
4000

4050

4100

4150



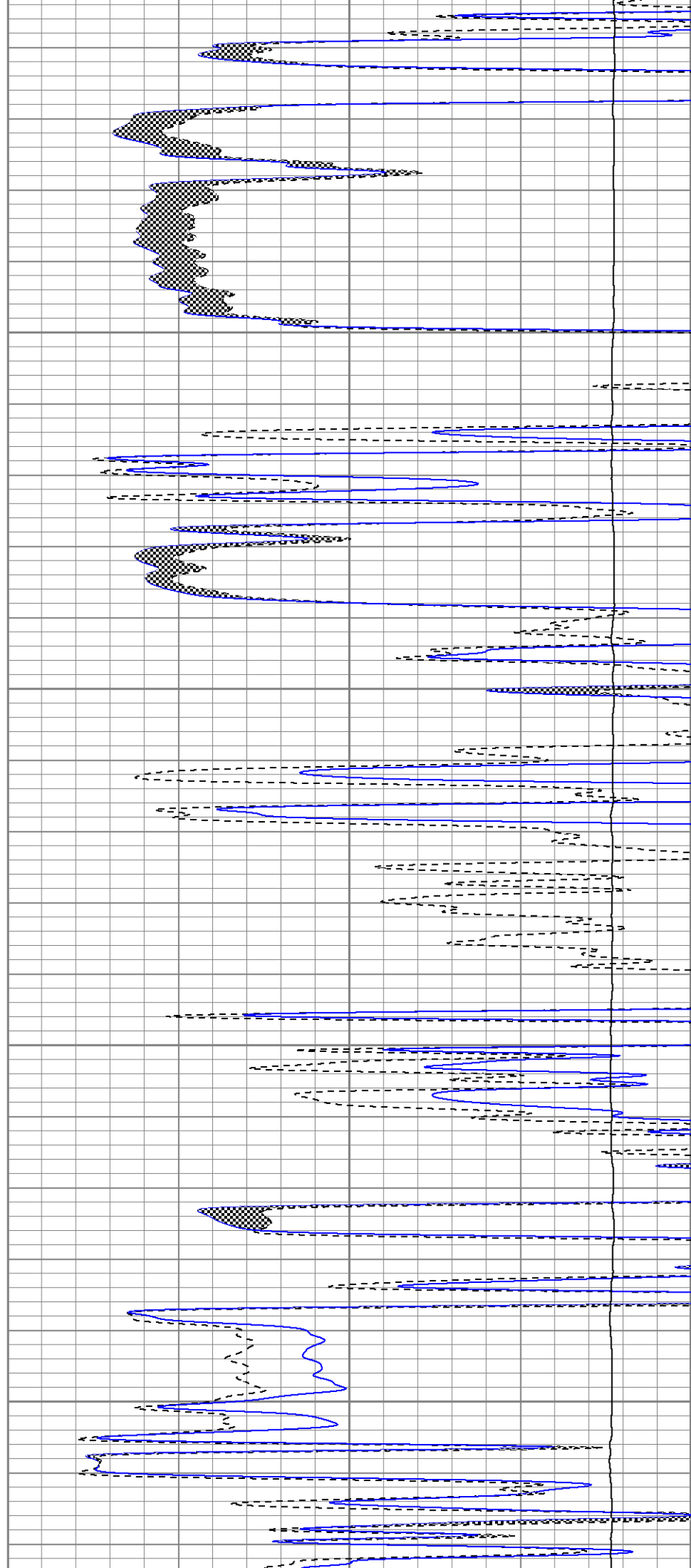


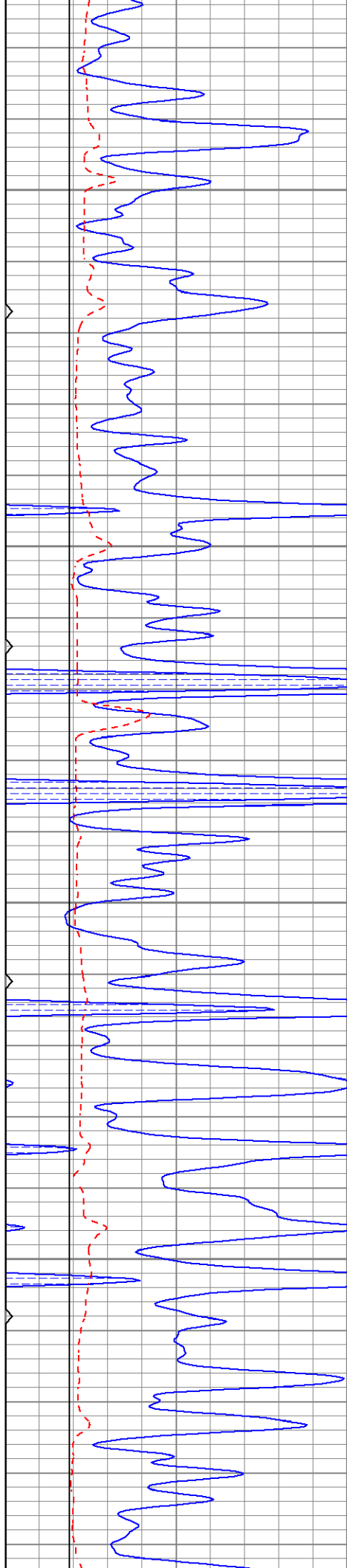
4200

4250

4300

4350



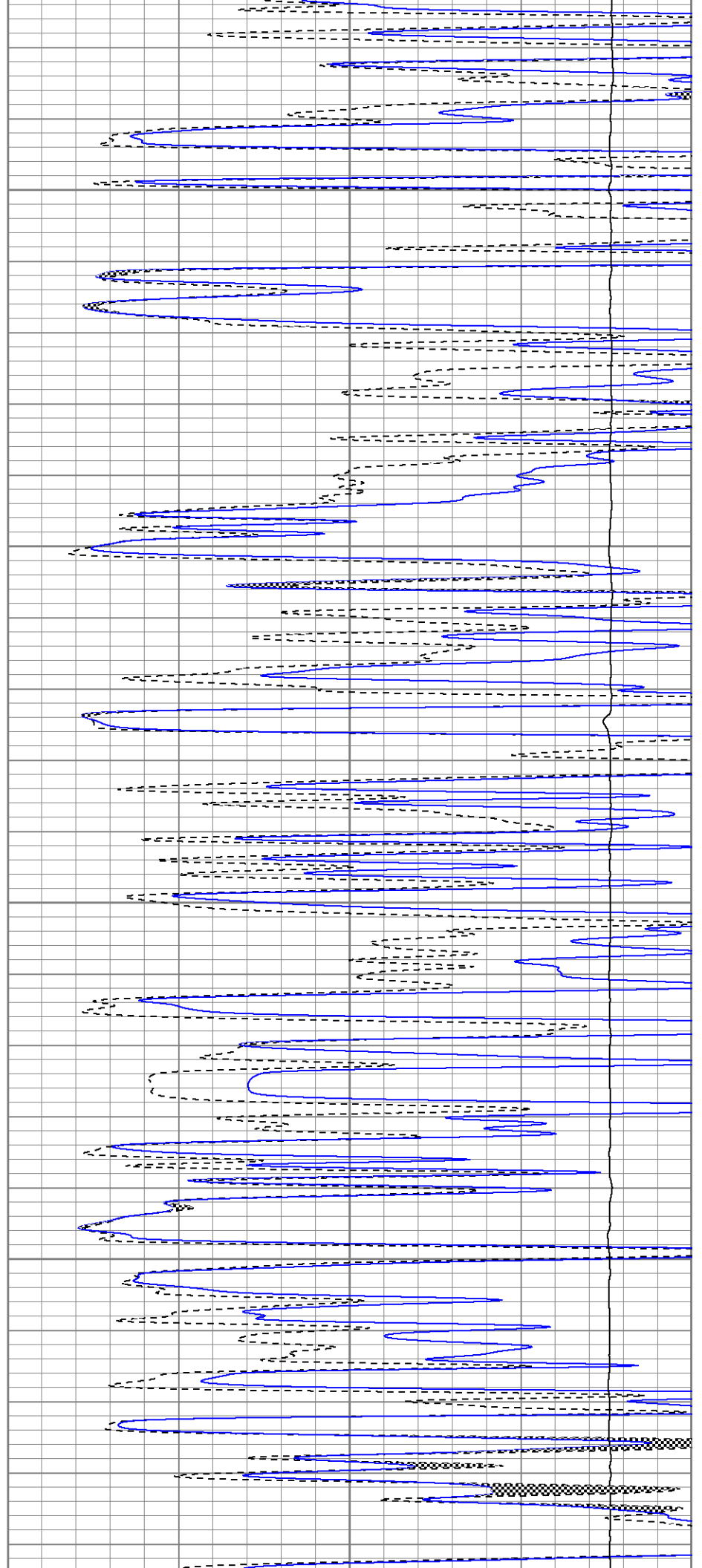


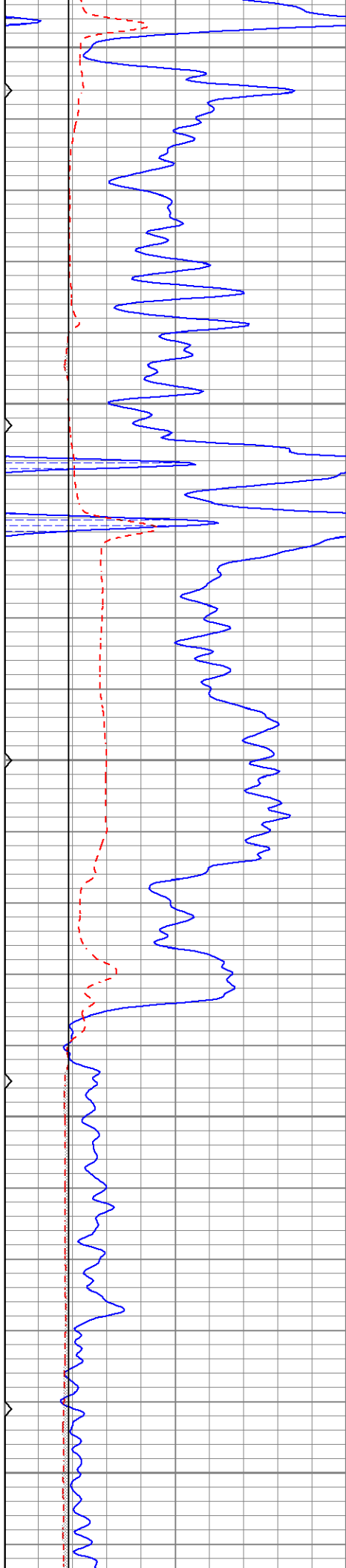
4400

4450

4500

4550





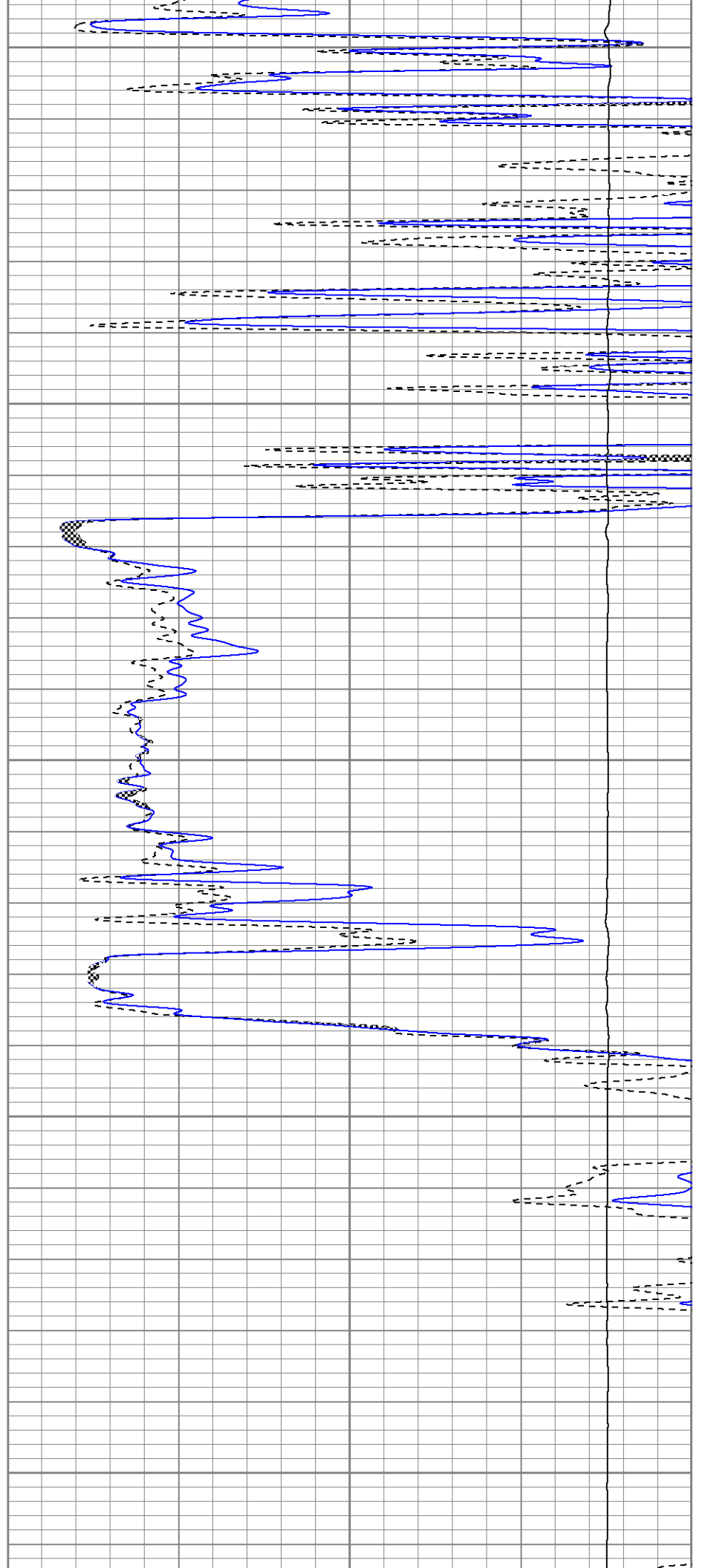
4600

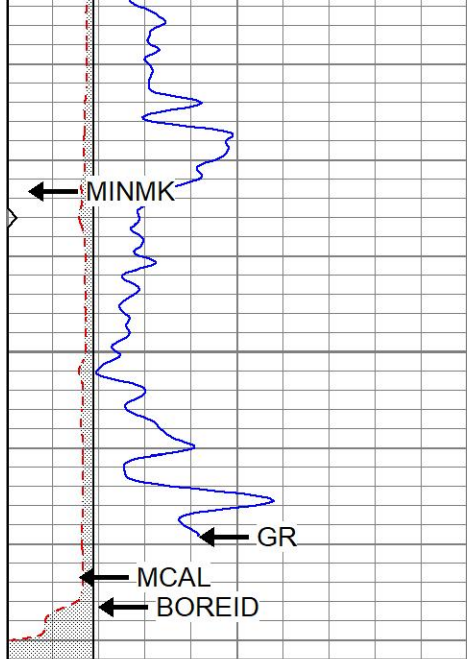
4650

4700

4750

4800

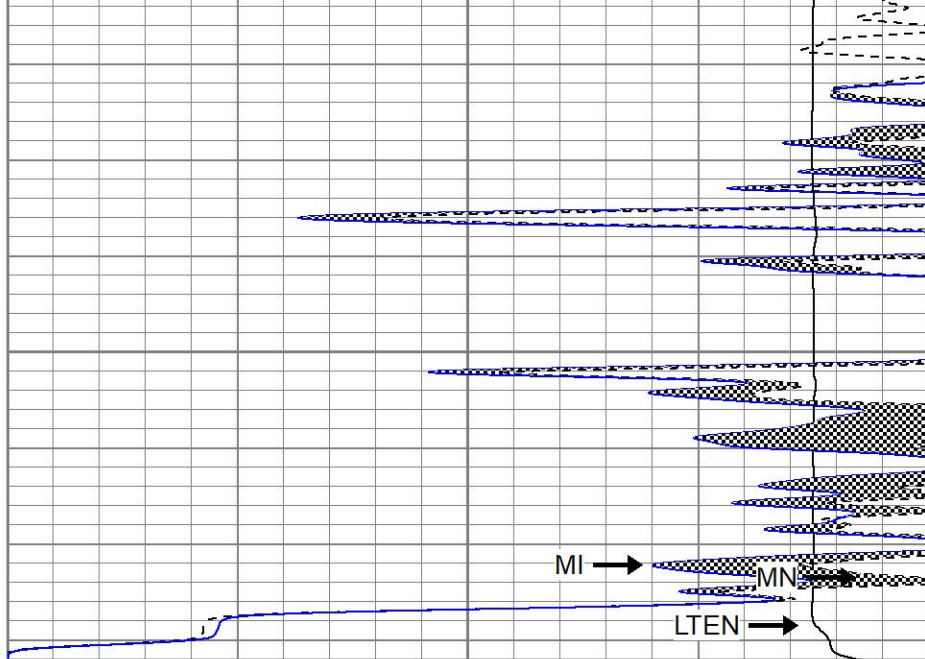




4850

LTD 4880

0	GR (GAPI)	150
6	MCAL (in)	16
6	BOREID (in)	16
0	MINMK	50



0	MN 2" (Ohm-m)	20
0	MI 1" (Ohm-m)	20
10000	LTEN (lb)	0

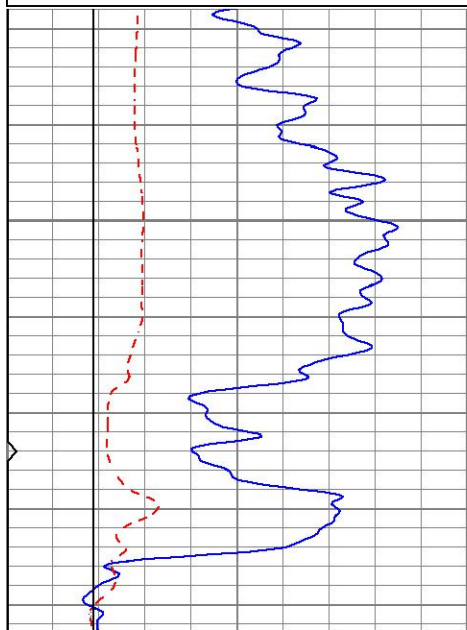


REPEAT SECTION

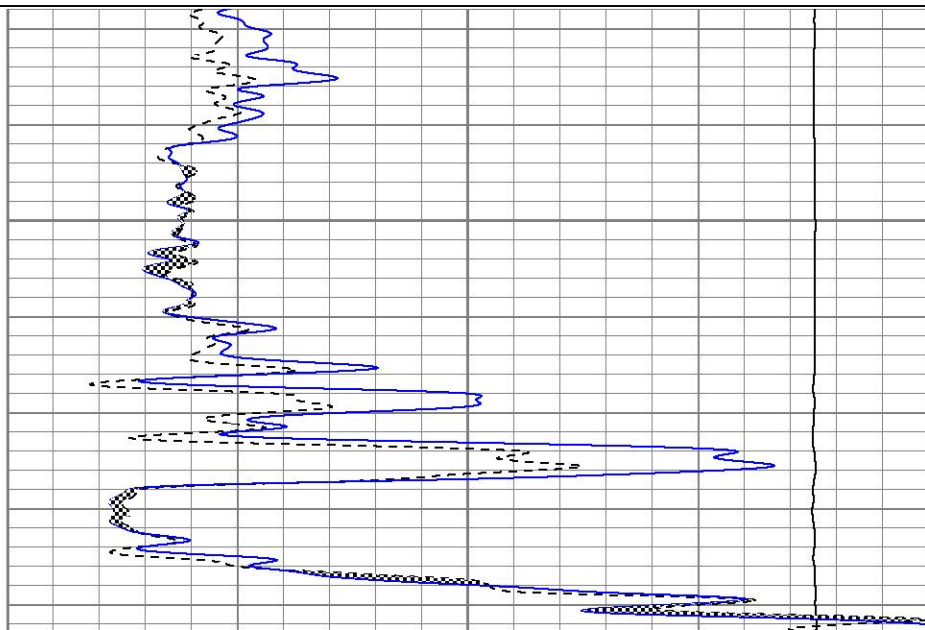
Database File ppdno#1oh.db
 Dataset Pathname pass6.1
 Presentation Format kml
 Dataset Creation Sun Dec 04 20:01:36 2022
 Charted by Depth in Feet scaled 1:240

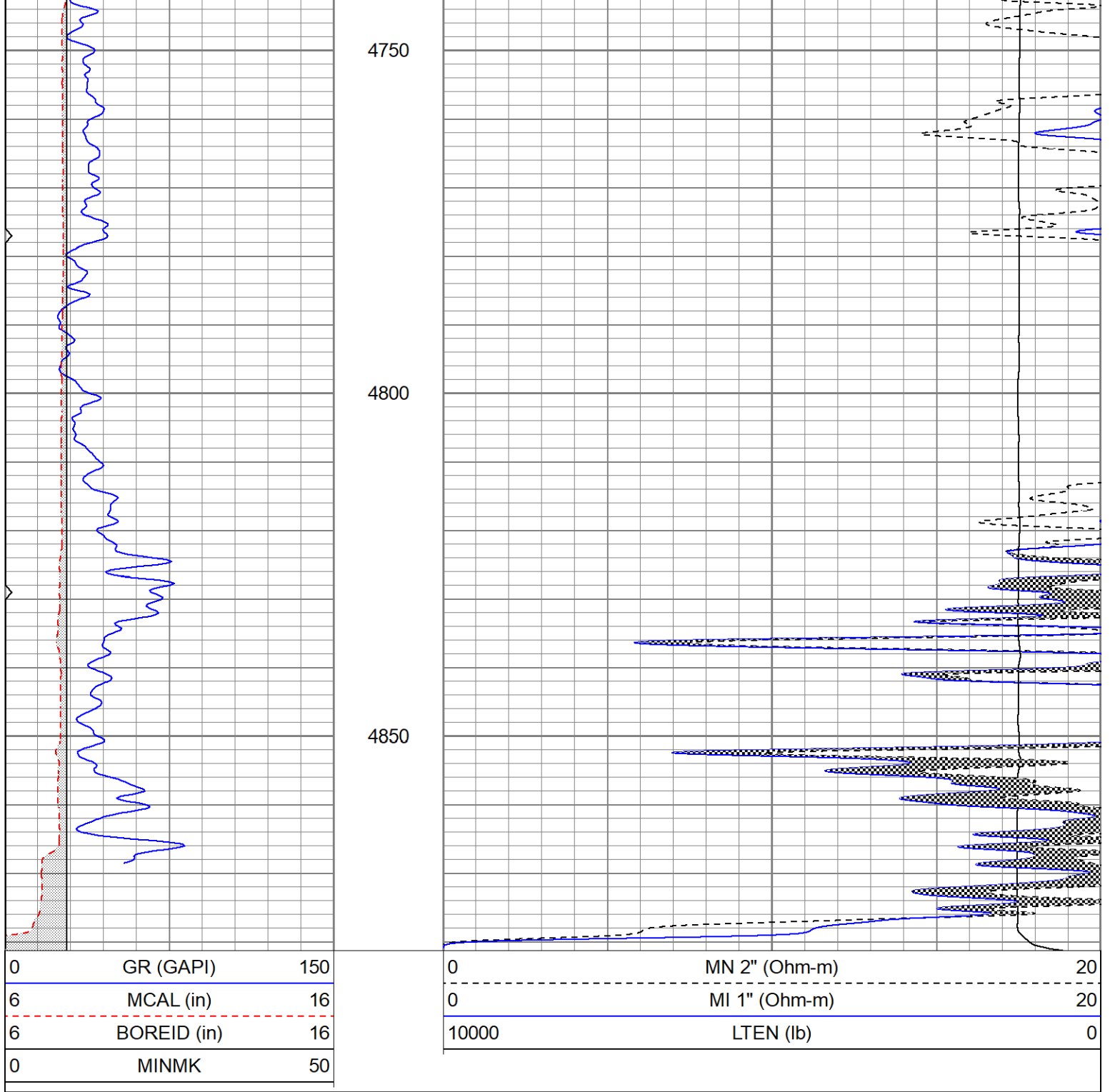
0	GR (GAPI)	150
6	MCAL (in)	16
6	BOREID (in)	16
0	MINMK	50

0	MN 2" (Ohm-m)	20
0	MI 1" (Ohm-m)	20
10000	LTEN (lb)	0



4700





Calibration Report

Database File pprno#1oh.db
 Dataset Pathname pass6.1
 Dataset Creation Sun Dec 04 20:01:36 2022

Microlog Calibration Report

Serial-Model: 9151-Gerhart
 Performed: Thu Nov 24 14:22:39 2022

	Readings			References			Results	
	Zero	Cal		Zero	Cal		m	b
Normal	0.0037	0.4489	V	0.0000	10.0000	Ohm-m	22.4608	-0.0820
Inverse	0.0002	0.6011	V	0.0000	10.0000	Ohm-m	16.6396	-0.0027
Caliper	0.9057	2.2211	V	8.4000	15.0000	in	5.0175	2.5555

Gamma Ray Calibration Report

Serial Number:	2001	
Tool Model:	OH	
Performed:	Wed Jun 15 13:37:15 2022	
Calibrator Value:	1.0	GAPI
Background Reading:	0.0	cps
Calibrator Reading:	1.0	cps
Sensitivity:	0.8200	GAPI/cps