



# DUAL INDUCTION LOG

Company SANGUINE RESOURCES, LLC.  
 Well SUPPES #1-14  
 Field UNNAMED  
 County NESS State KANSAS

Location: API #: 15-135-26219-0000  
 1375 FNL & 1241 FWL  
 NE - NE - SW - NW  
 SEC 6 TWP 23S RGE 32W  
 Permanent Datum GROUND LEVEL Elevation 2304  
 Log Measured From KELLY BUSHING 7' A.G.L  
 Drilling Measured From KELLY BUSHING  
 Other Services CDNL/CNL PE  
 Elevation K.B. 2311  
 D.F. 2309  
 G.L. 2304

Date	7/26/24
Run Number	ONE
Depth Driller	4335
Depth Logger	4333
Bottom Logged Interval	4331
Top Log Interval	00
Casing Driller	8.625 @ 223
Casing Logger	223
Bit Size	7.875
Type Fluid in Hole	CHEMICAL MUD
Density / Viscosity	9.1/61
pH / Fluid Loss	11.0/6.4
Source of Sample	FLOWLINE
Rm @ Meas. Temp	.800 @ 86F
Rmf @ Meas. Temp	.600 @ 86F
Rmc @ Meas. Temp	1.60 @ 86F
Source of Rmf / Rmc	MEASUREMENT
Rm @ BHT	.730 @ 119F
Time Circulation Stopped	2 HOURS
Time Logger on Bottom	11:00 P.M.
Maximum Recorded Temperature	119F
Equipment Number	3802
Location	HAYS, KANSAS
Recorded By	COLE ROBBEN
Witnessed By	SEAN DEENIHAN

<<< Fold Here >>>

All interpretations are opinions based on inferences from electrical or other measurements and we cannot and do not guarantee the accuracy or correctness of any interpretation, and we shall not, except in the case of gross or willful negligence on our part, be liable or responsible for any loss, costs, damages, or expenses incurred or sustained by anyone resulting from any interpretation made by any of our officers, agents or employees. These interpretations are also subject to our general terms and conditions set out in our current Price Schedule.

### Comments

THANK YOU FOR USING ELI WIRELINE SERVICES, HAYS, KS. ( 785 ) 628-6395

DIRECTIONS:  
 FROM BROWNELL, KANSAS EAST ON HWY 4, 3 MILES TO ROAD 'DD', SOUTH 5 MILES TO ROAD 210, 1 1/2 MILES WEST, NORTH INTO

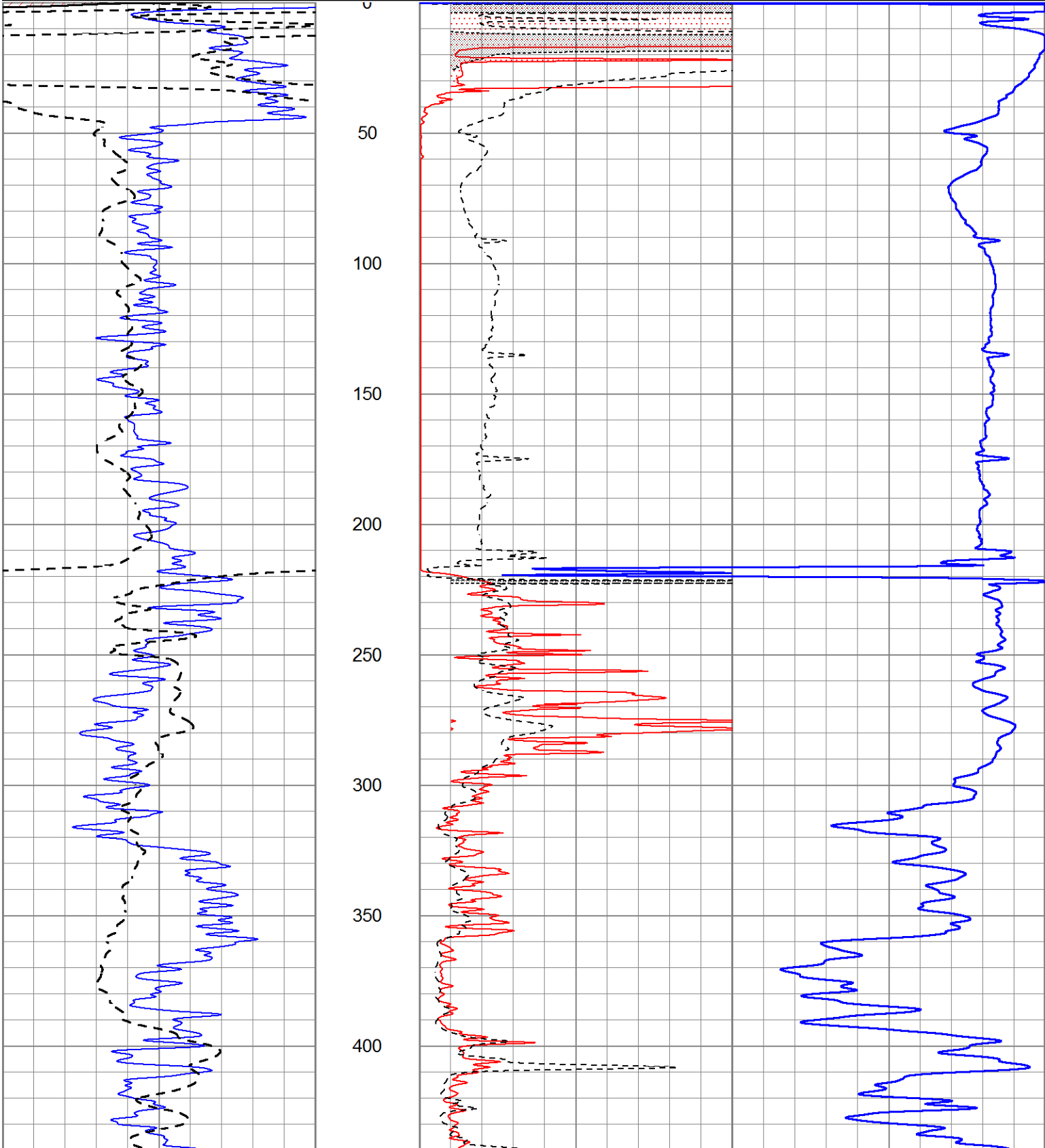


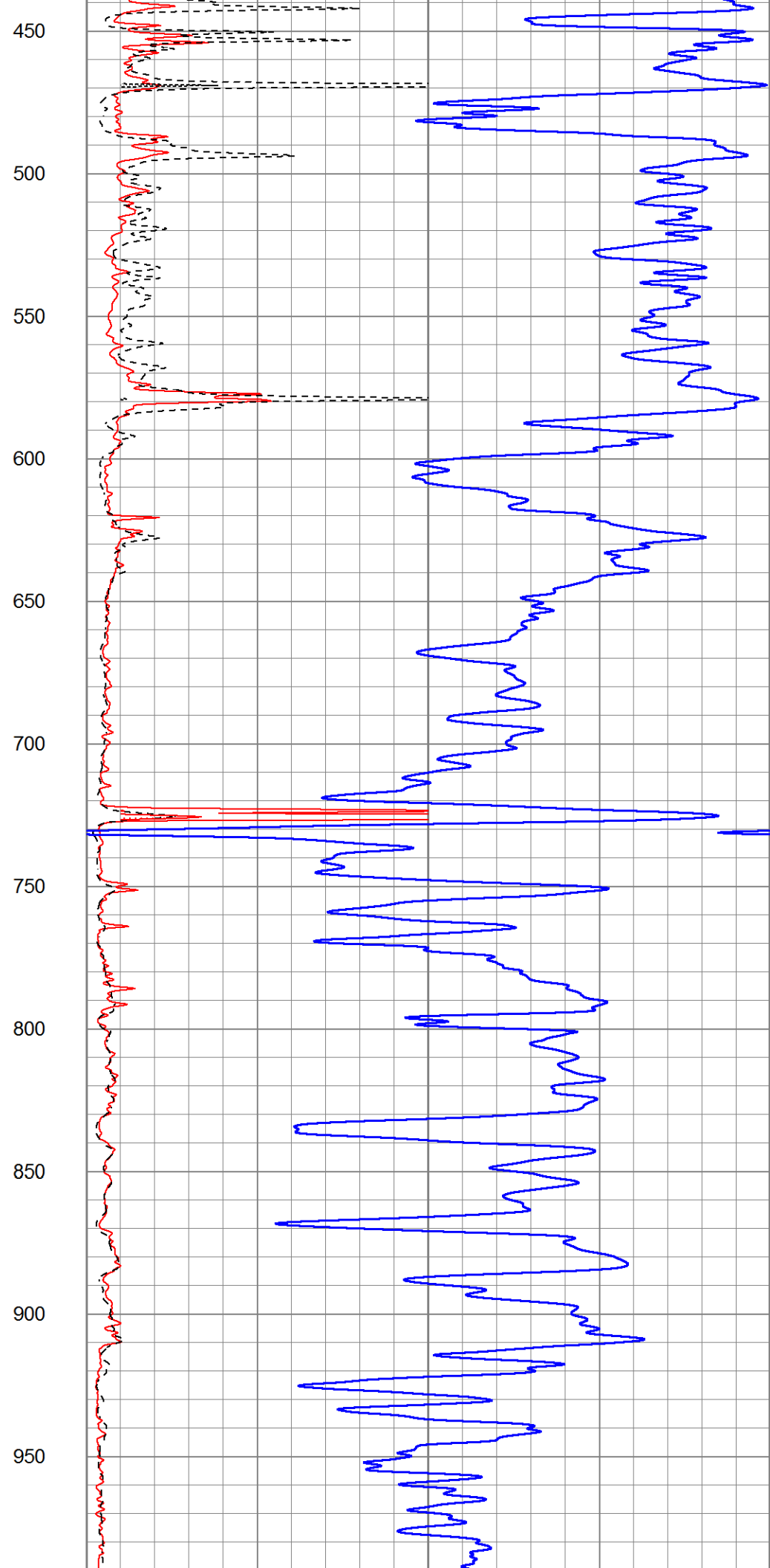
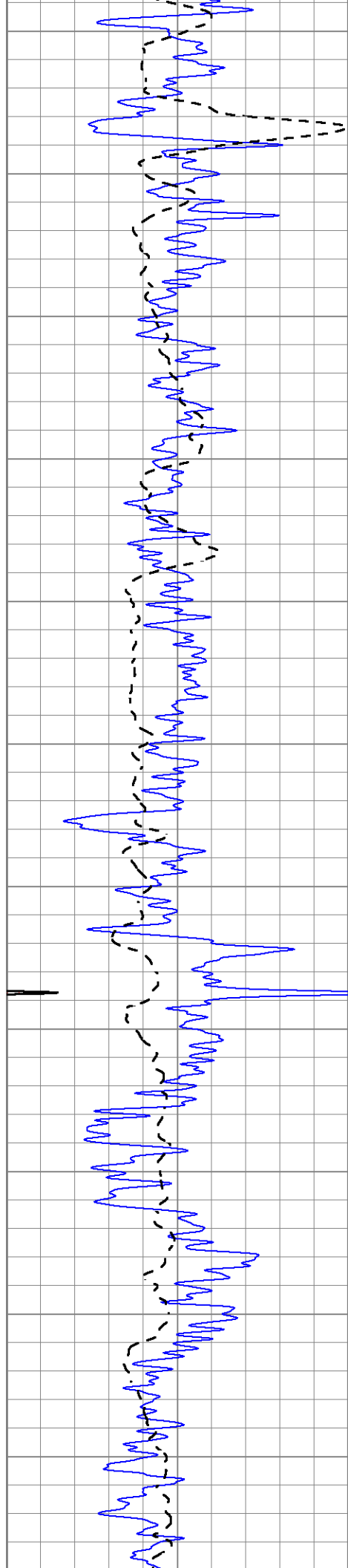
# MAIN SECTION

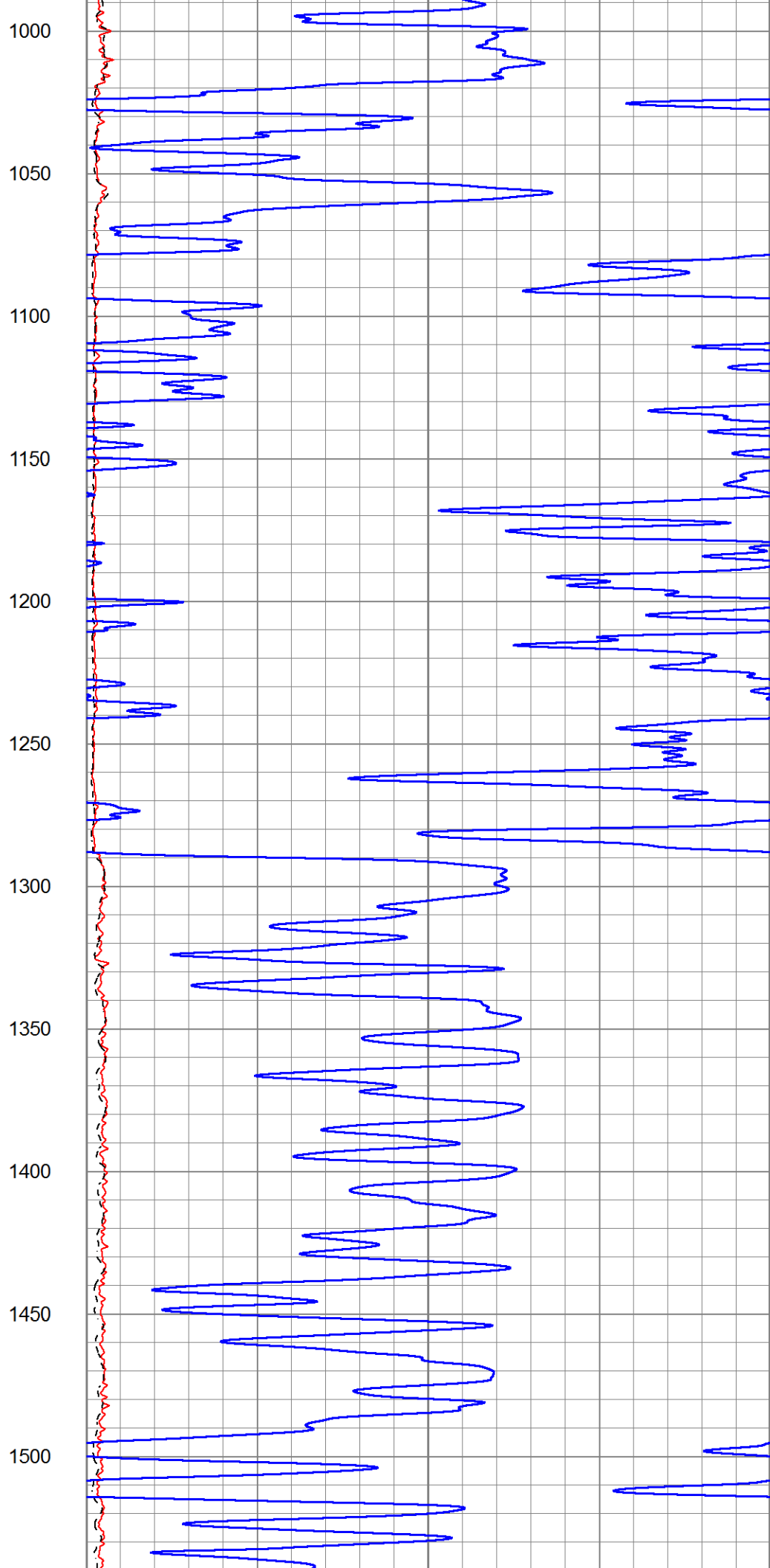
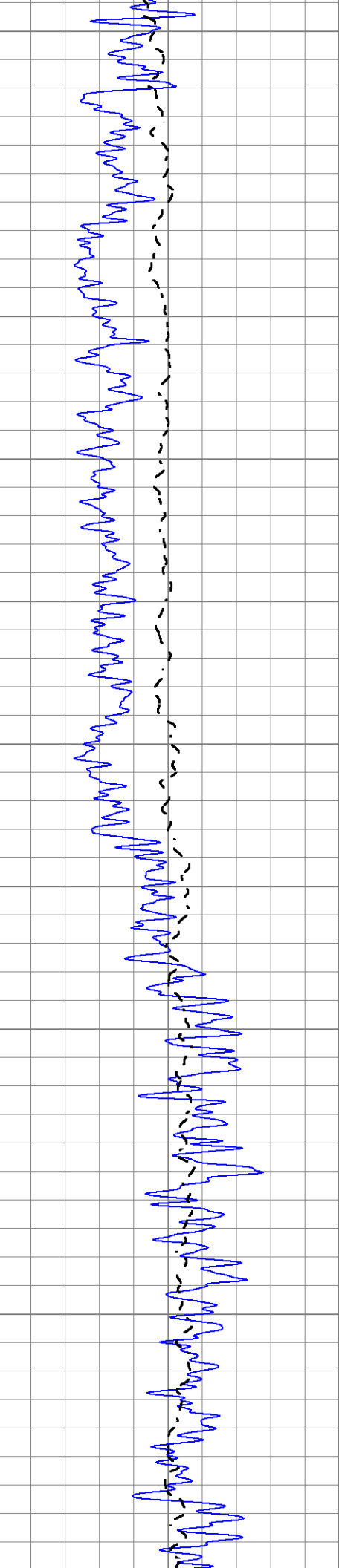
Database File 8800pe.db  
 Dataset Pathname pass3M  
 Presentation Format \_dil2  
 Dataset Creation Sat Jul 27 01:44:42 2024  
 Charted by Depth in Feet scaled 1:600

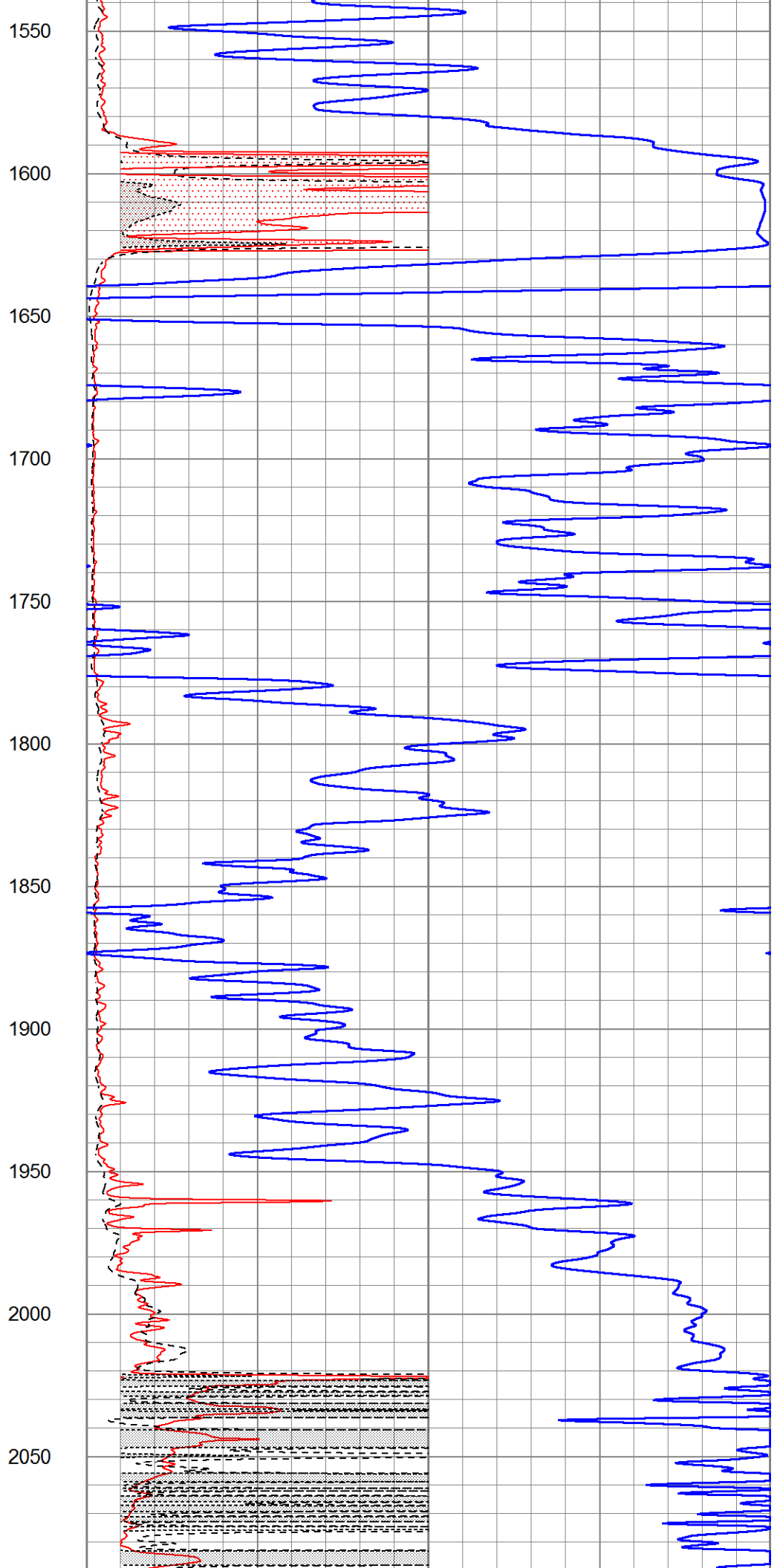
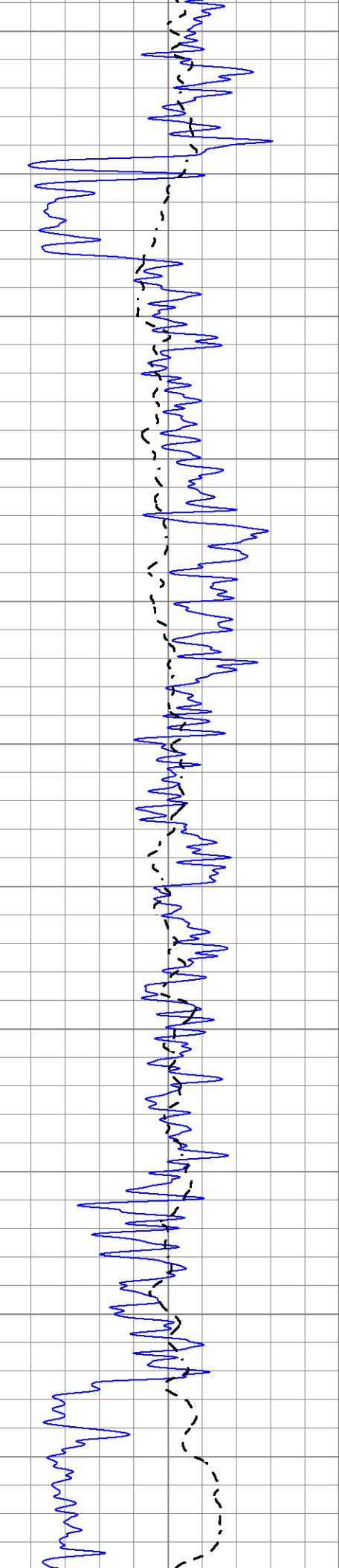
0	Gamma Ray (GAPI)	150
-100	SP (mV)	100

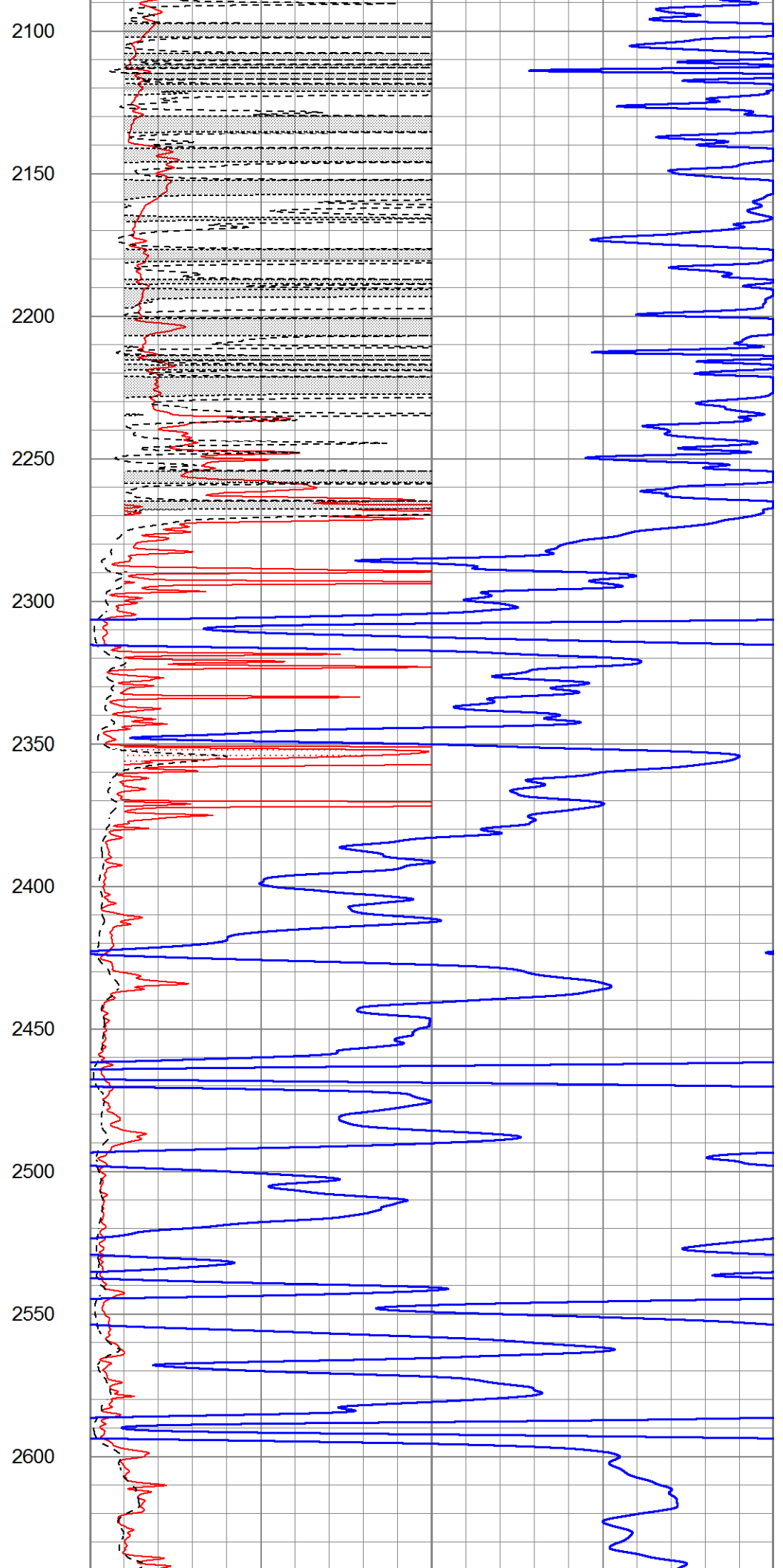
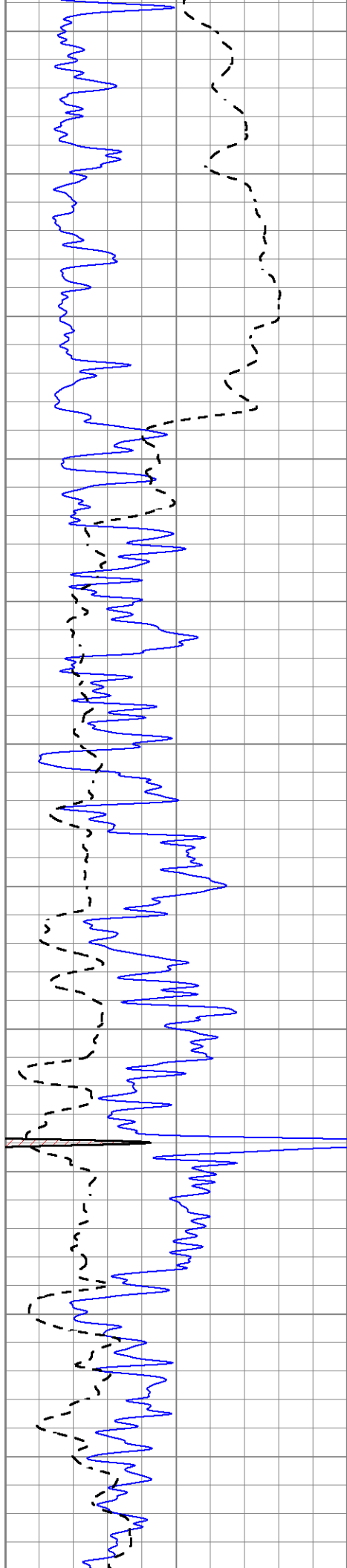
1000	CILD (mmho/m)	0
0	RLL3 (Ohm-m)	50
0	Deep Induction (Ohm-m)	50
50	RILD X10 (Ohm-m)	500
50	RLL3 X10 (Ohm-m)	500

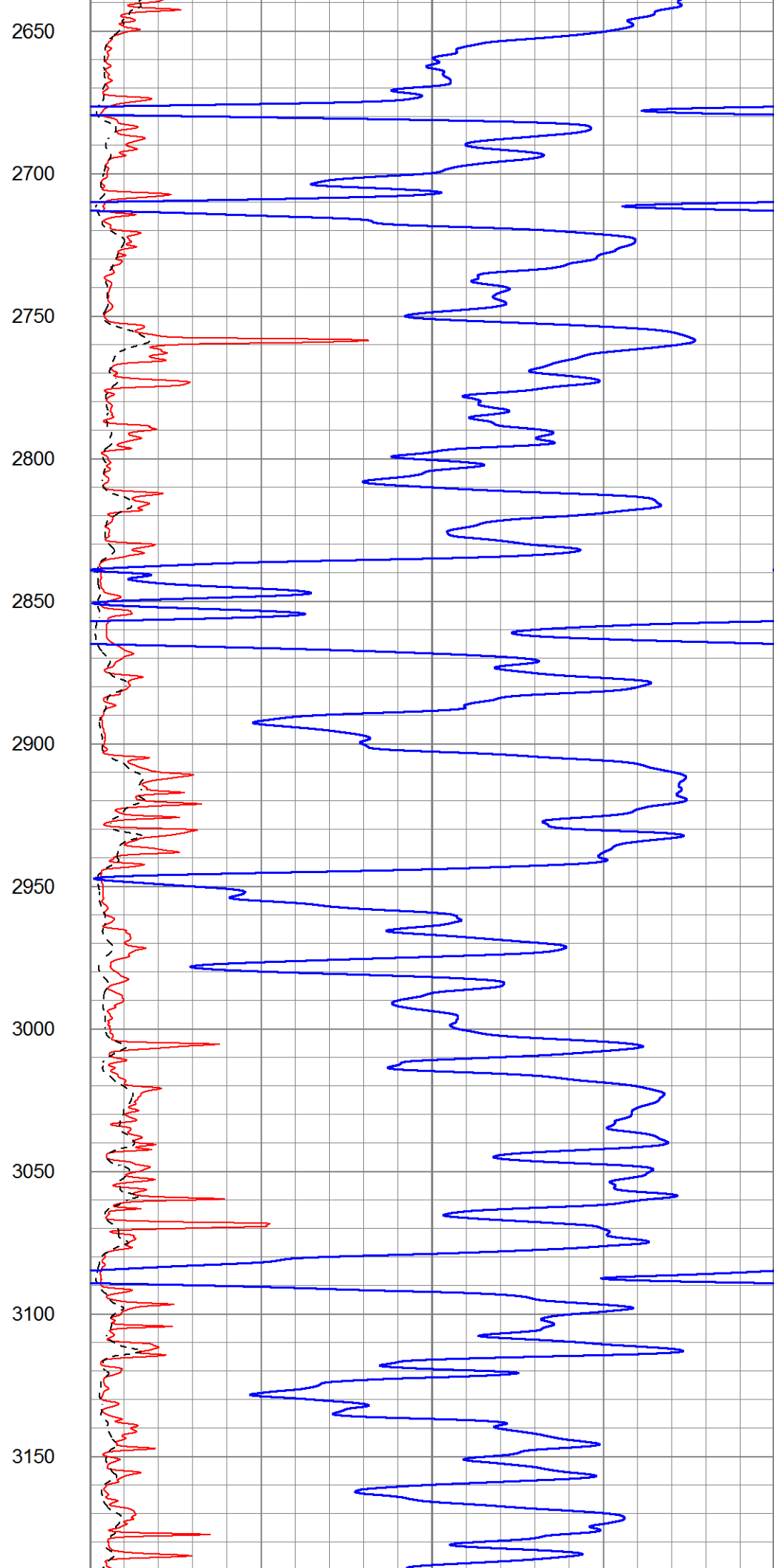
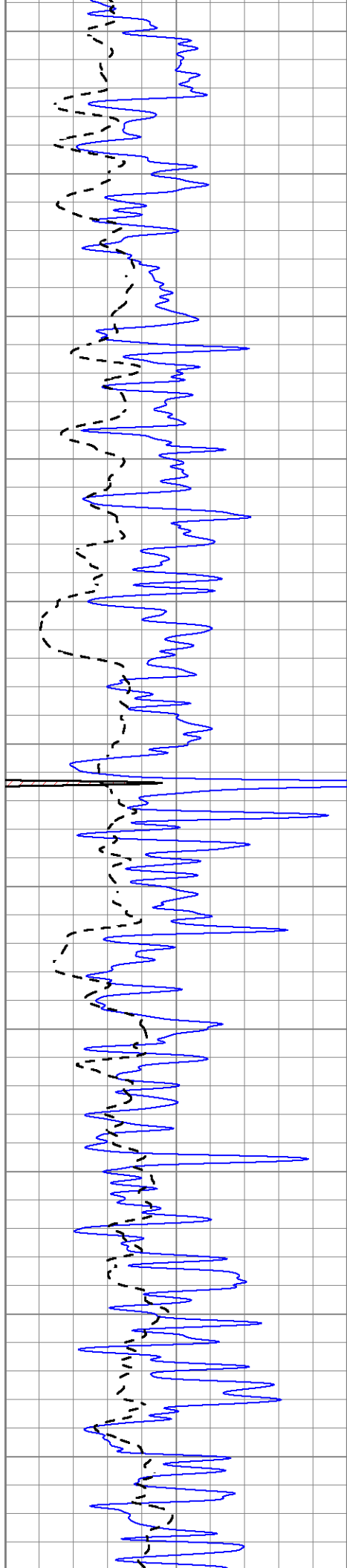


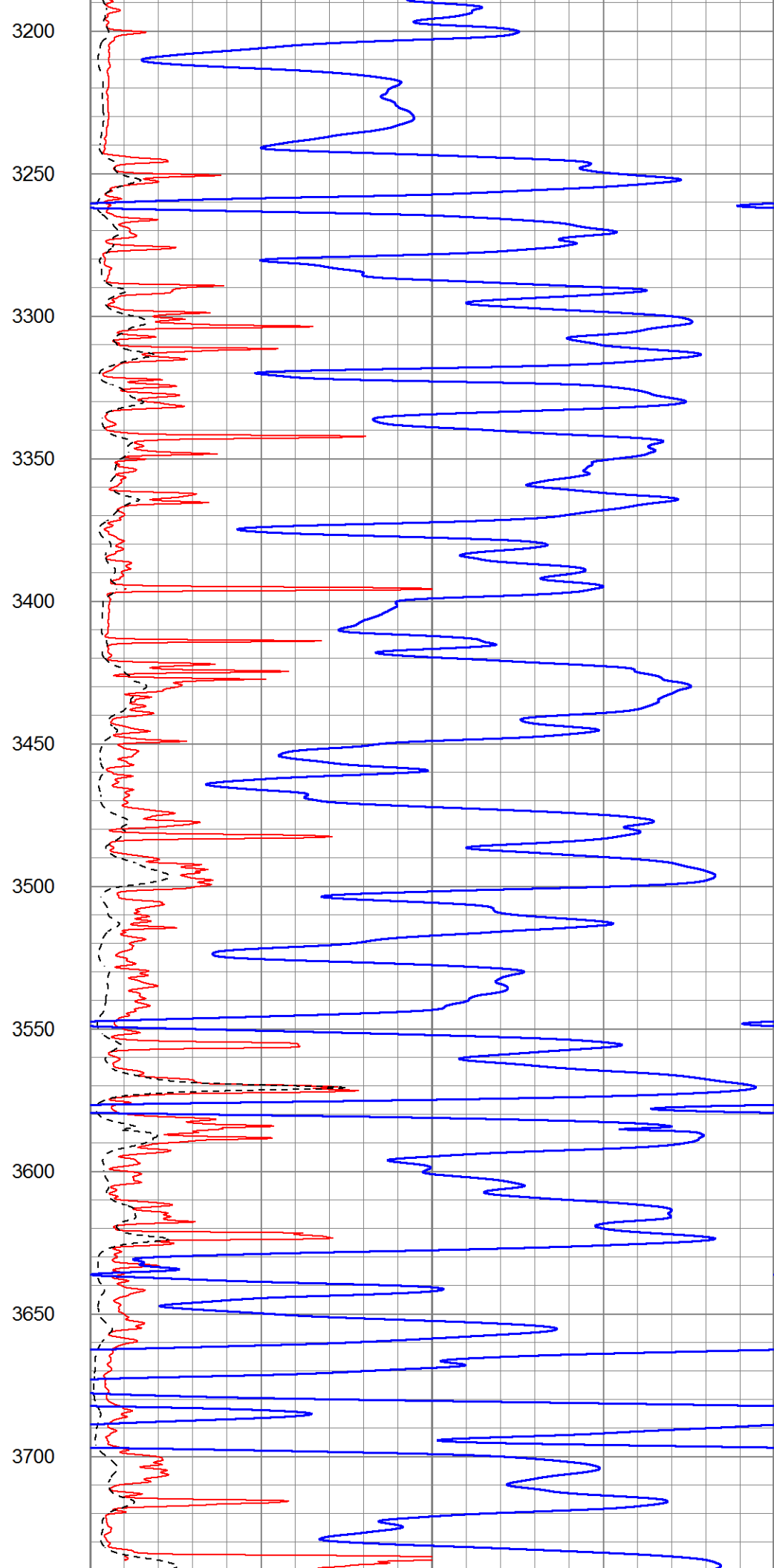
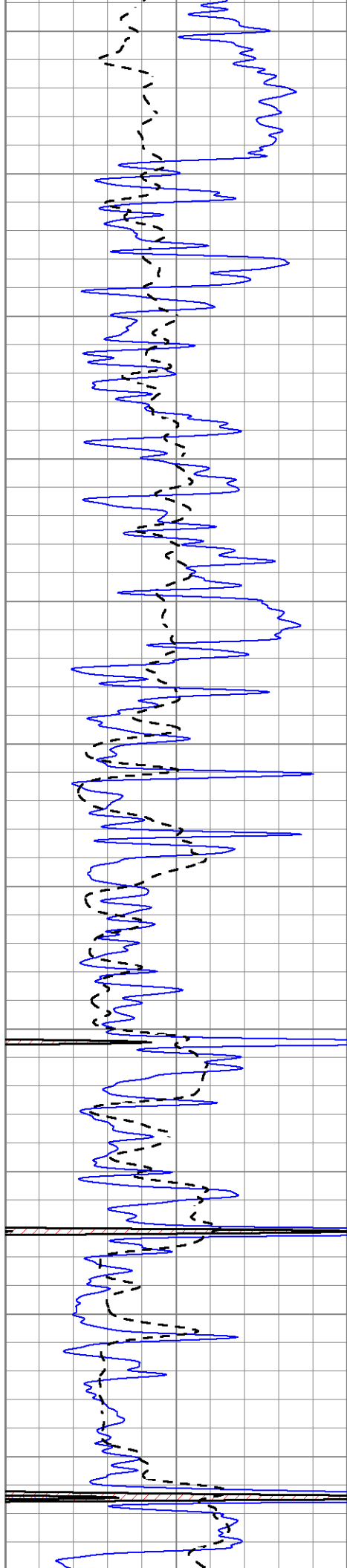


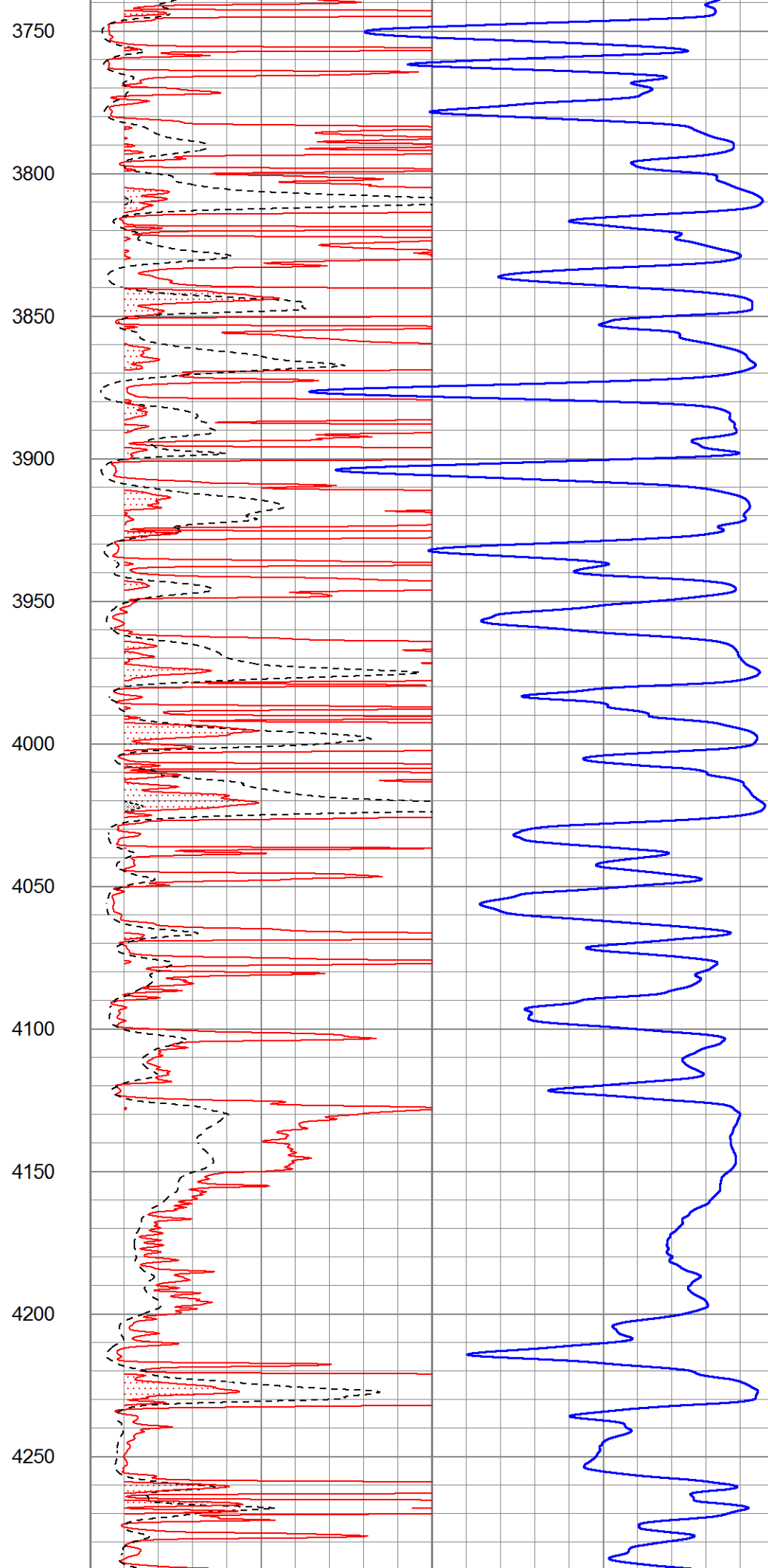
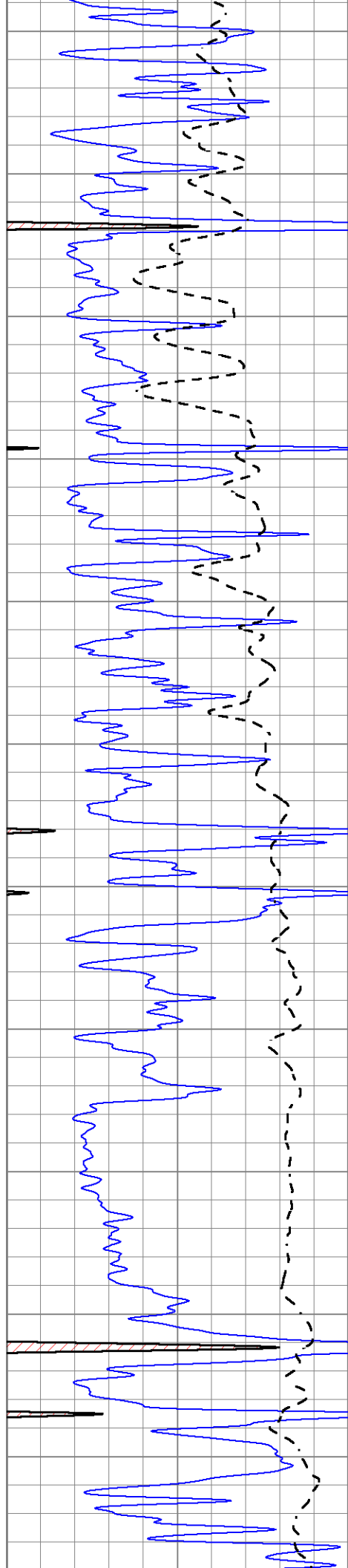


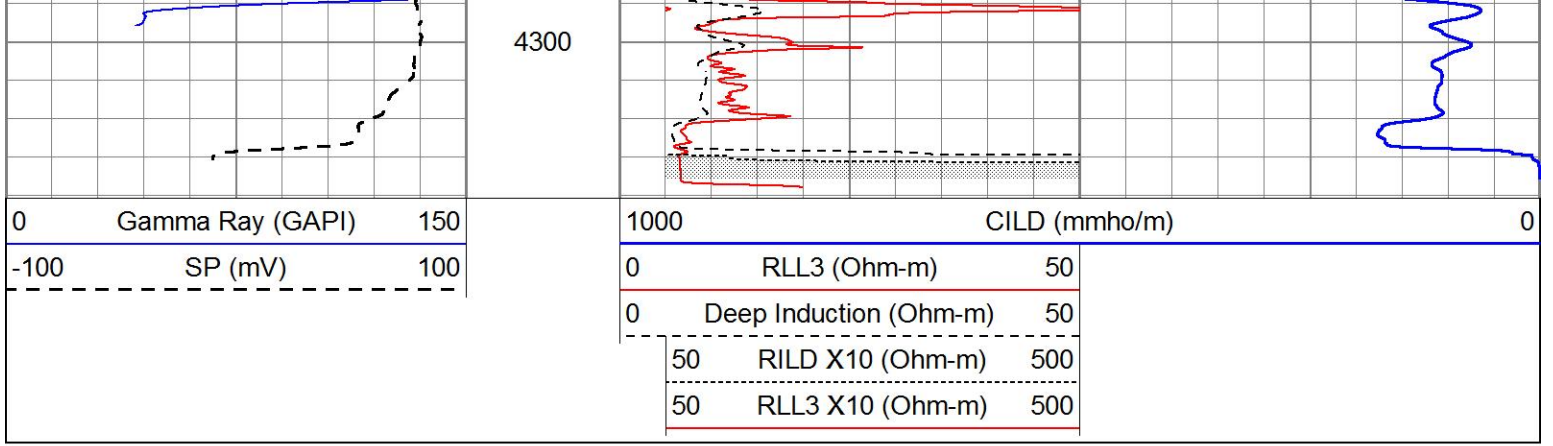








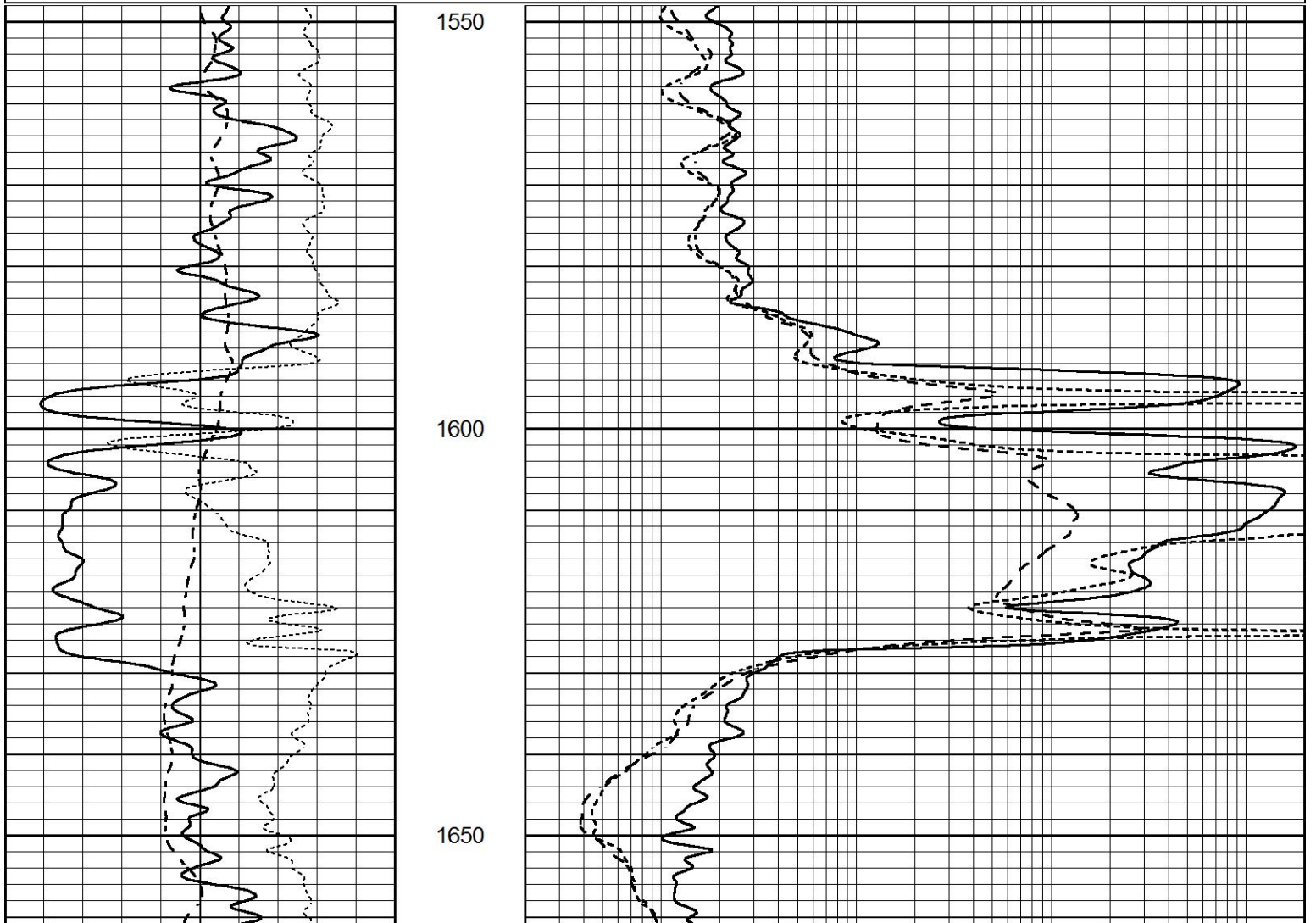


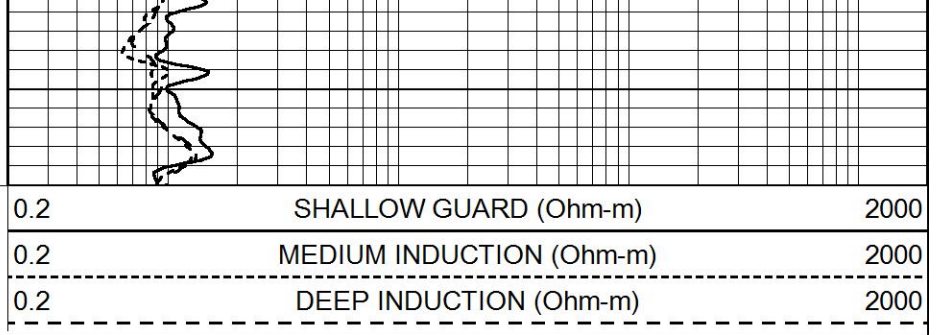
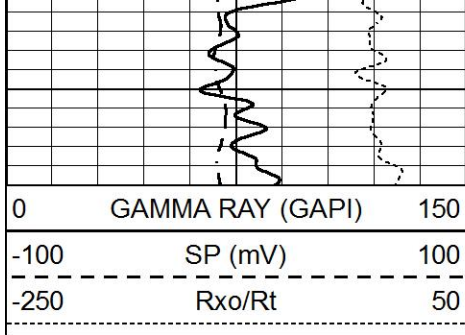


# ANHYDRITE

Database File 8800pe.db  
 Dataset Pathname pass3A  
 Presentation Format \_dil  
 Dataset Creation Sat Jul 27 00:46:25 2024  
 Charted by Depth in Feet scaled 1:240

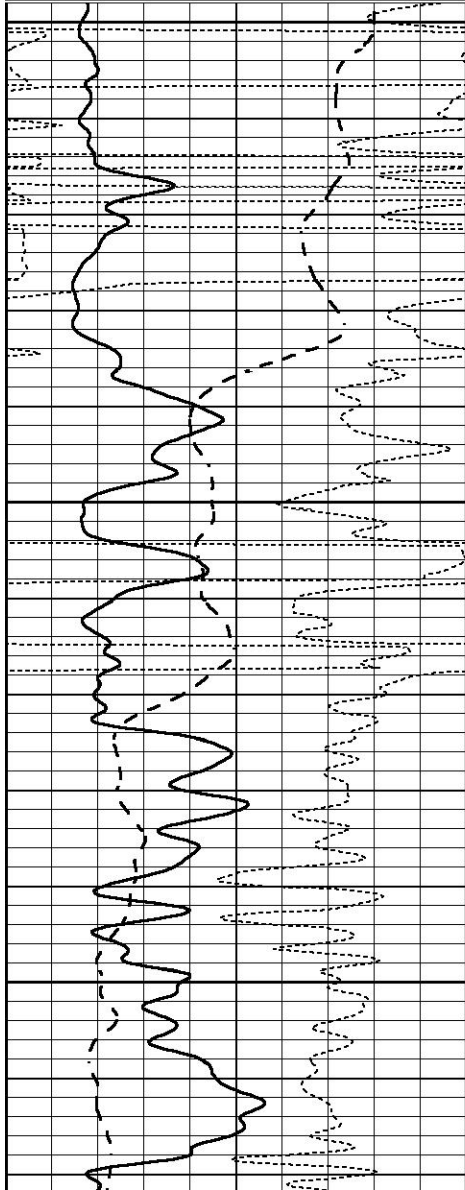
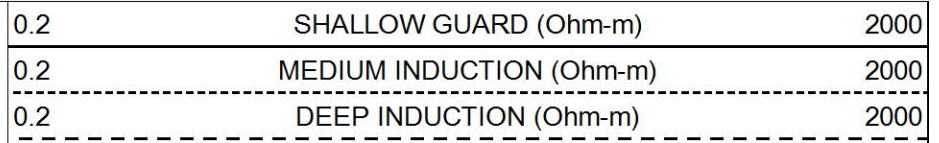
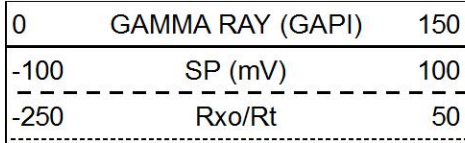
0	GAMMA RAY (GAPI)	150	0.2	SHALLOW GUARD (Ohm-m)	2000
-100	SP (mV)	100	0.2	MEDIUM INDUCTION (Ohm-m)	2000
-250	Rxo/Rt	50	0.2	DEEP INDUCTION (Ohm-m)	2000





# MAIN SECTION

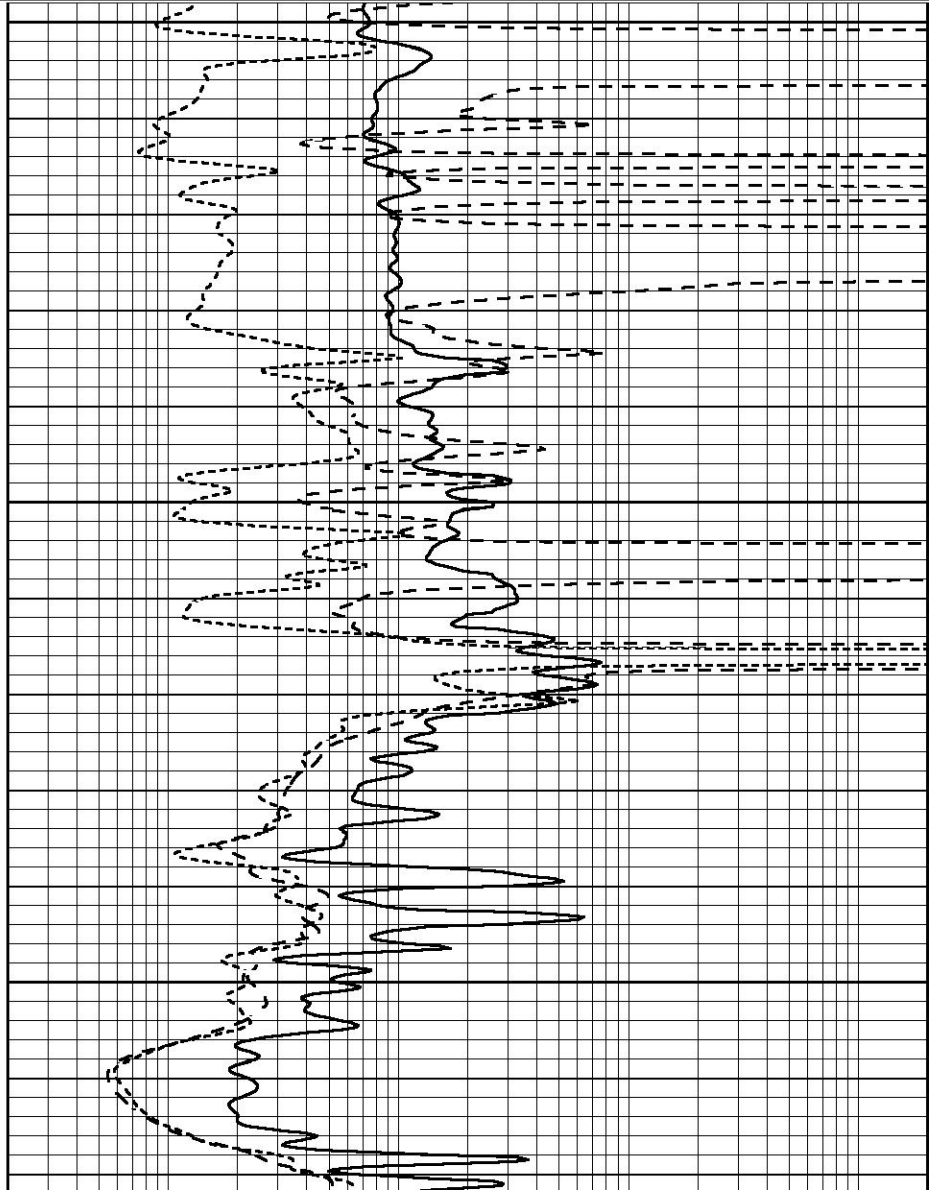
Database File 8800pe.db  
 Dataset Pathname pass3M  
 Presentation Format \_dil  
 Dataset Creation Sat Jul 27 01:44:42 2024  
 Charted by Depth in Feet scaled 1:240

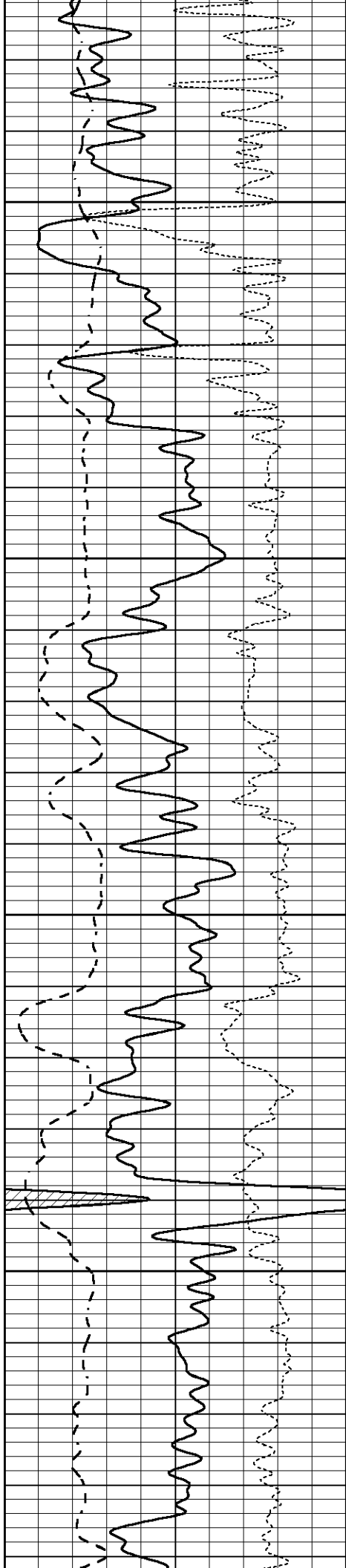


2200

2250

2300



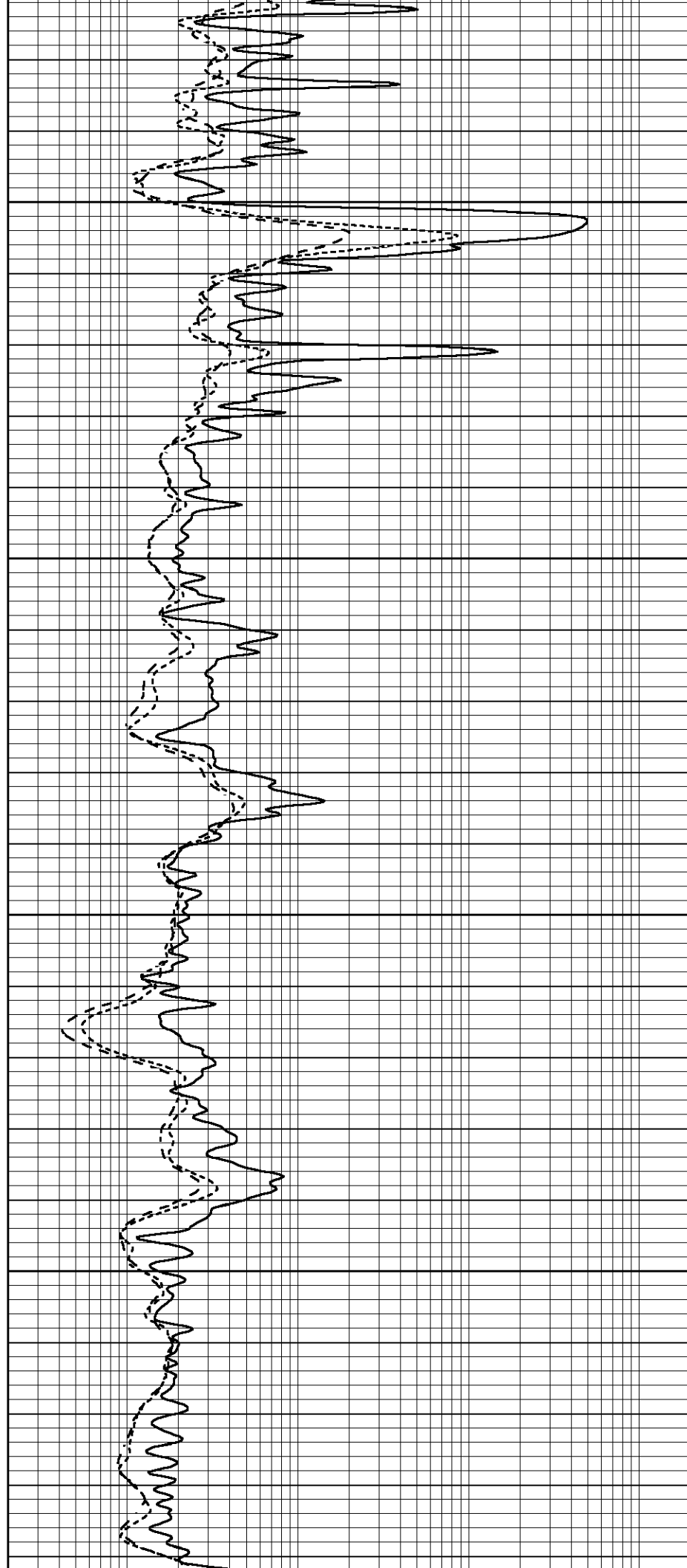


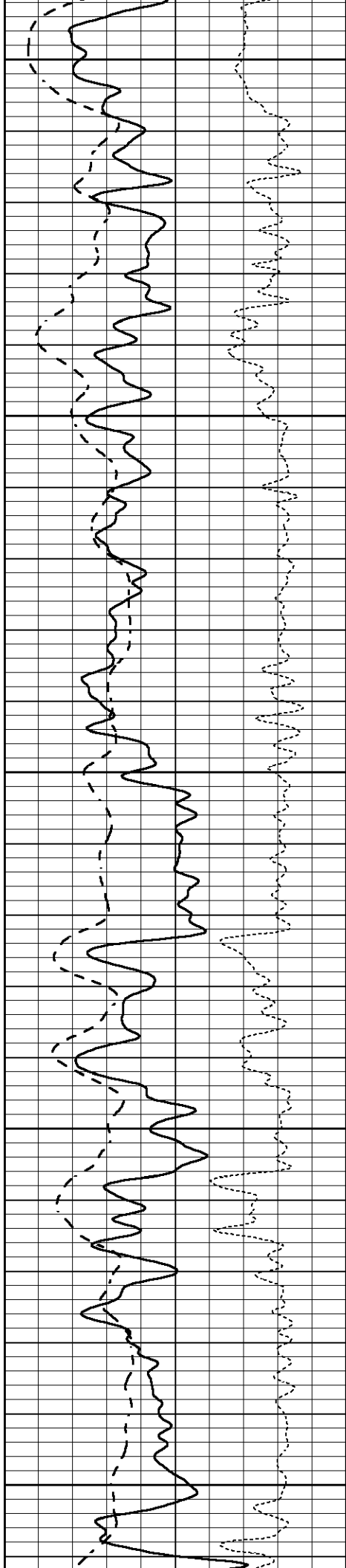
2350

2400

2450

2500





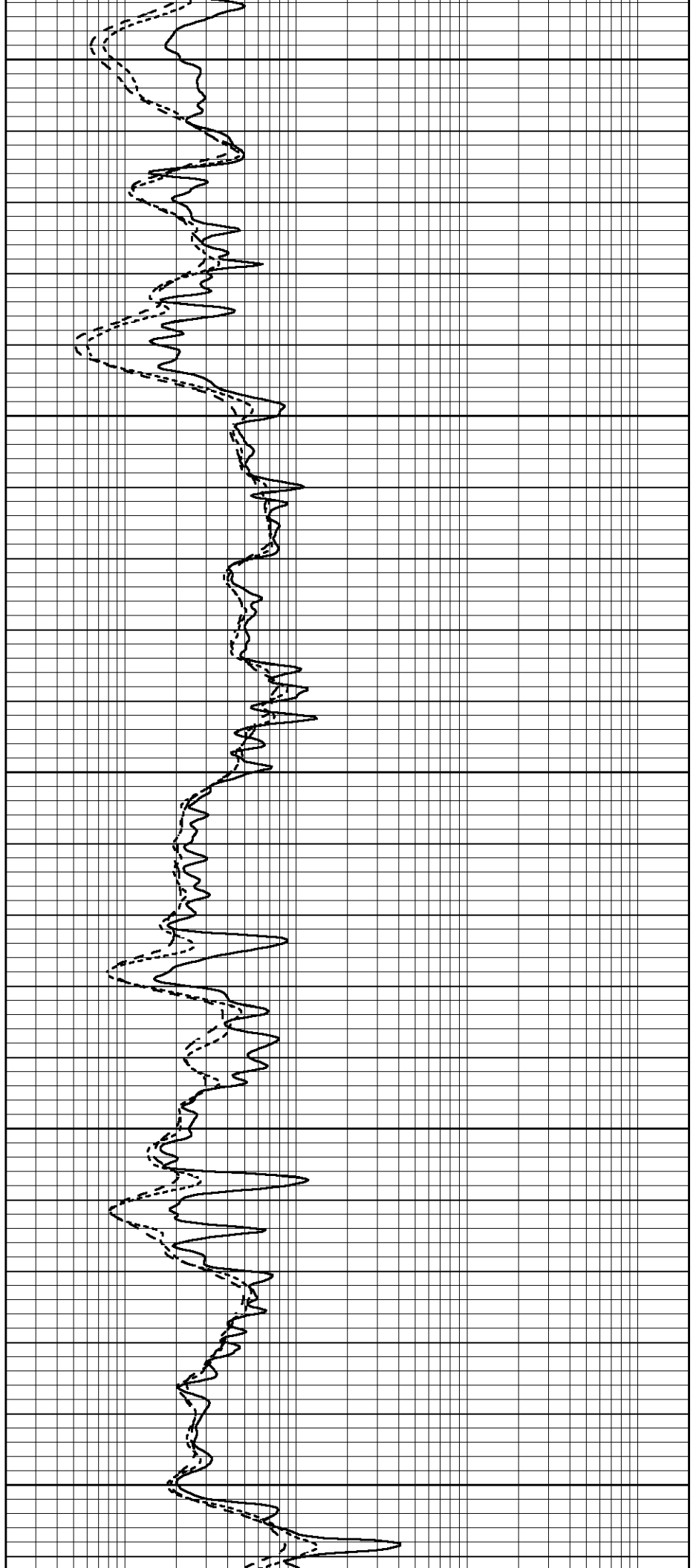
2550

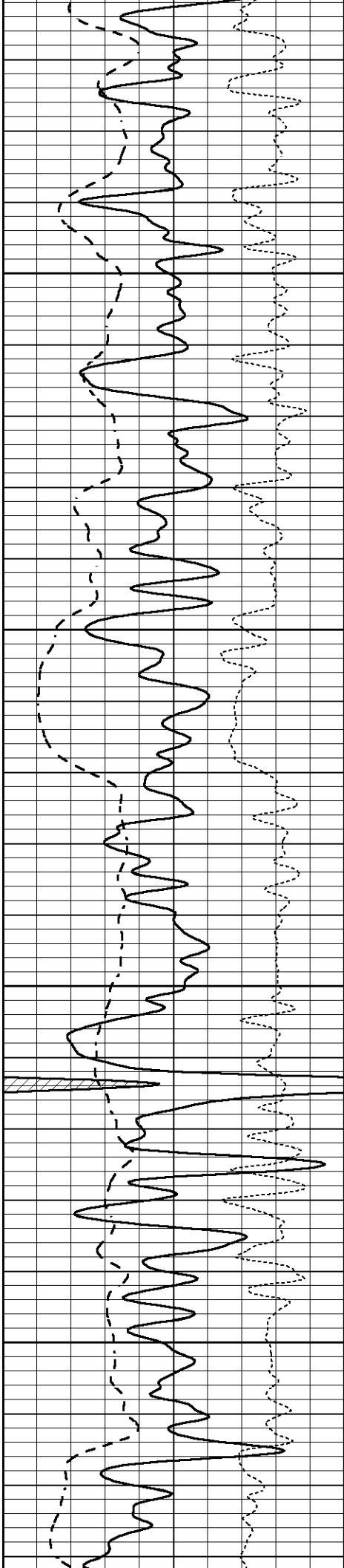
2600

2650

2700

2750



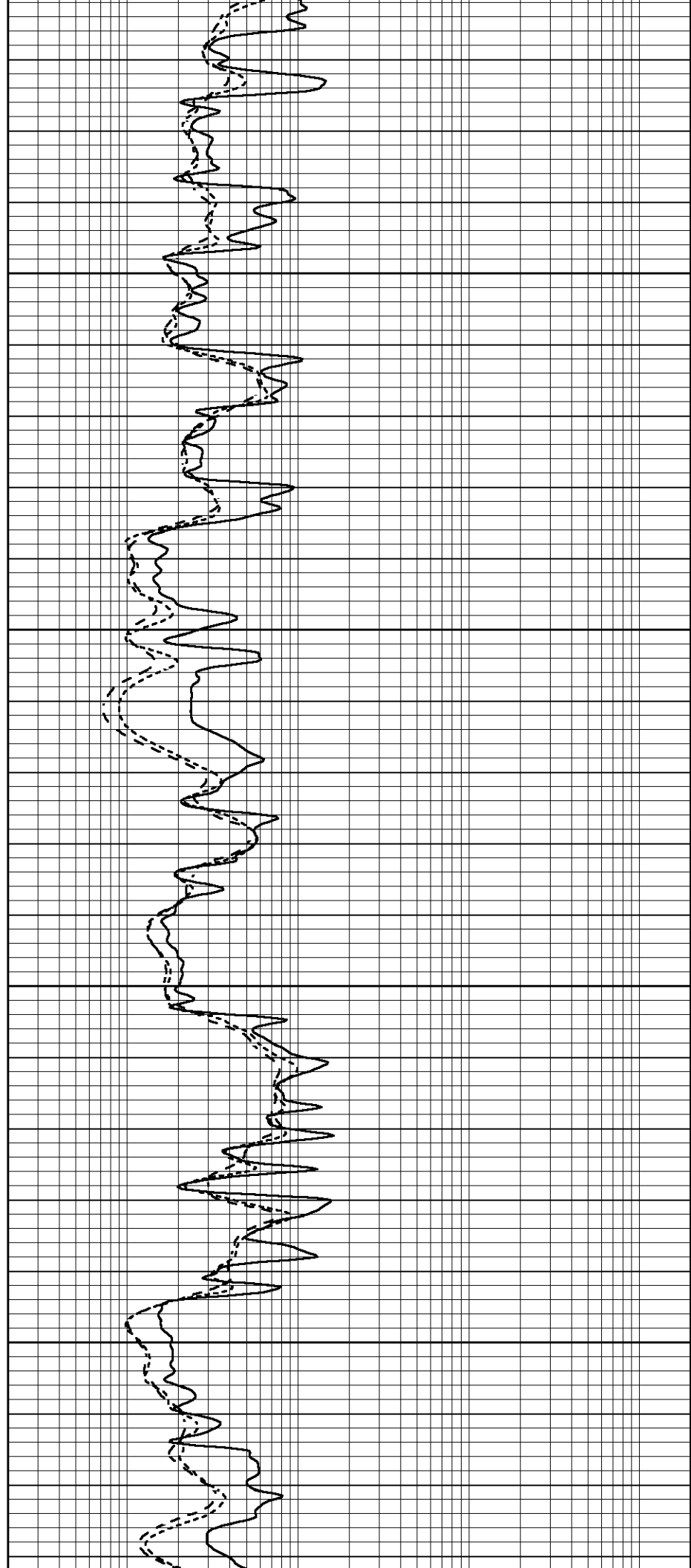


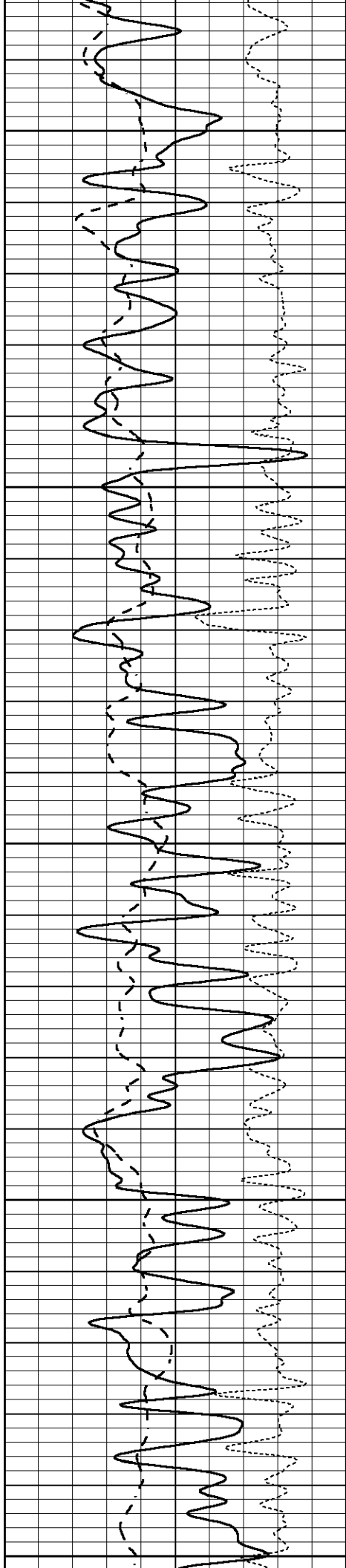
2800

2850

2900

2950





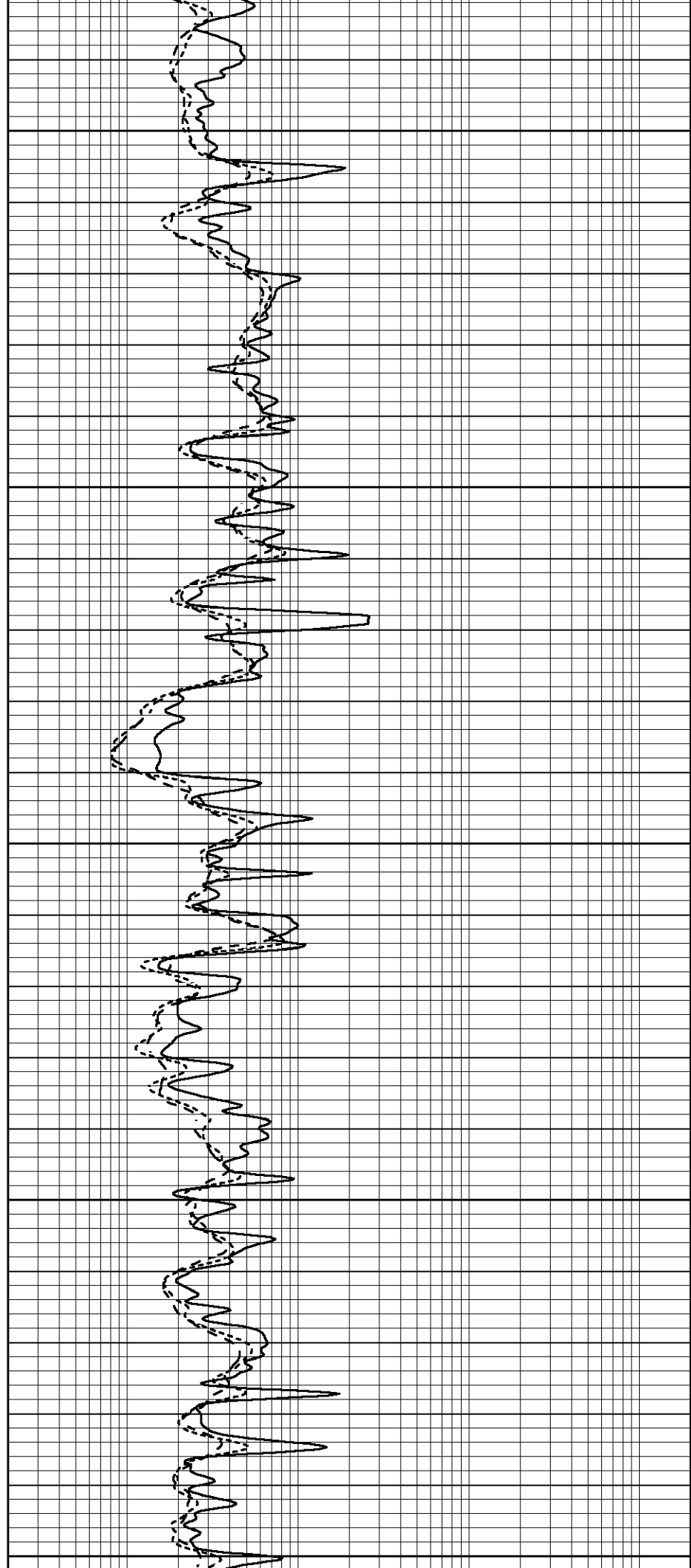
3000

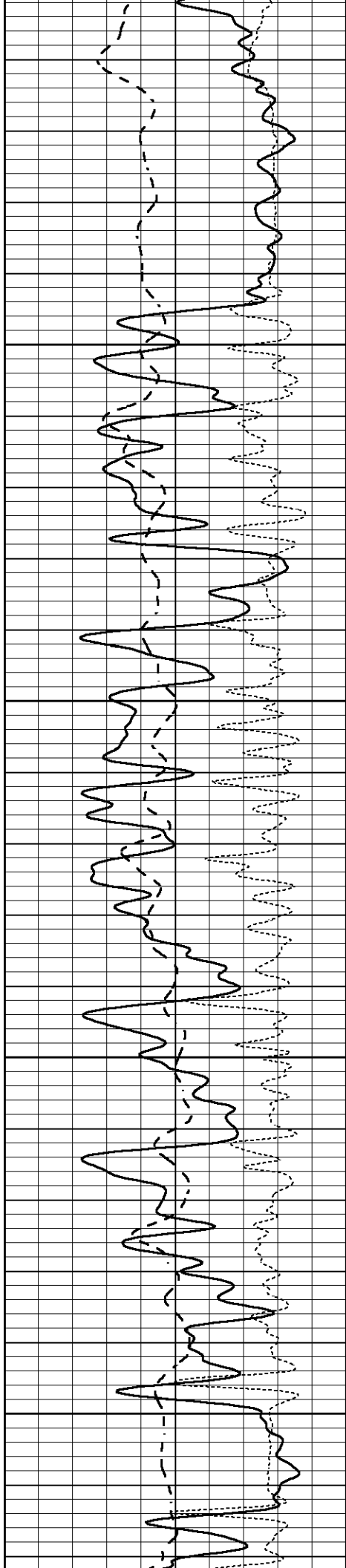
3050

3100

3150

3200



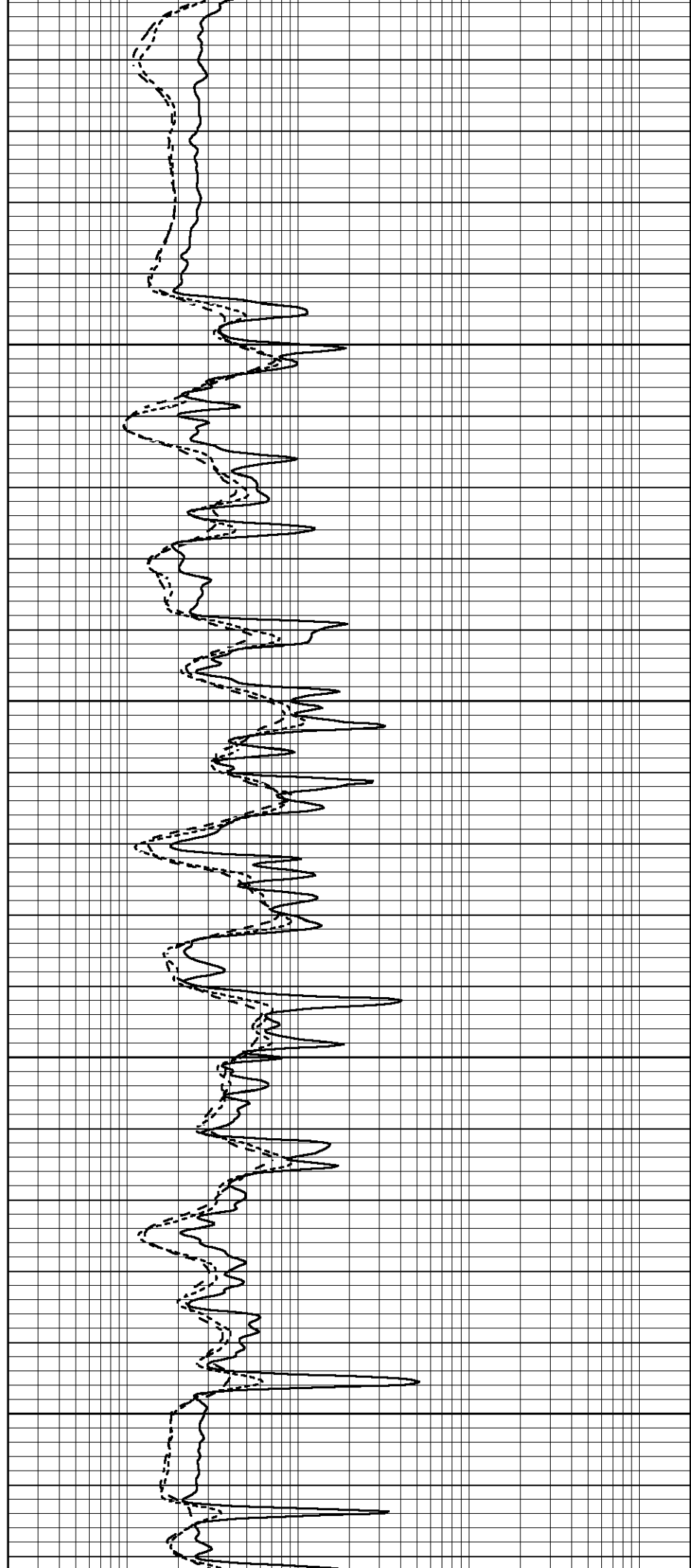


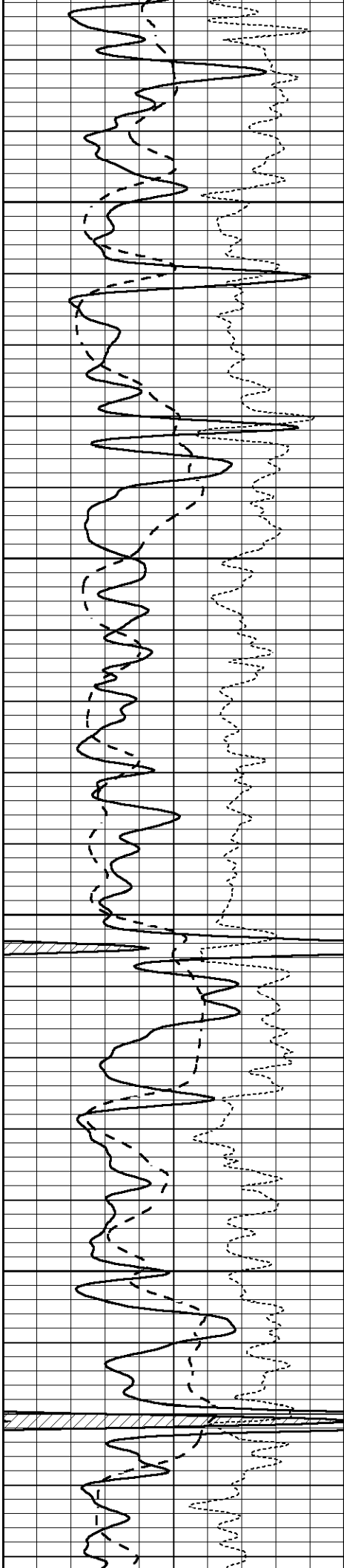
3250

3300

3350

3400



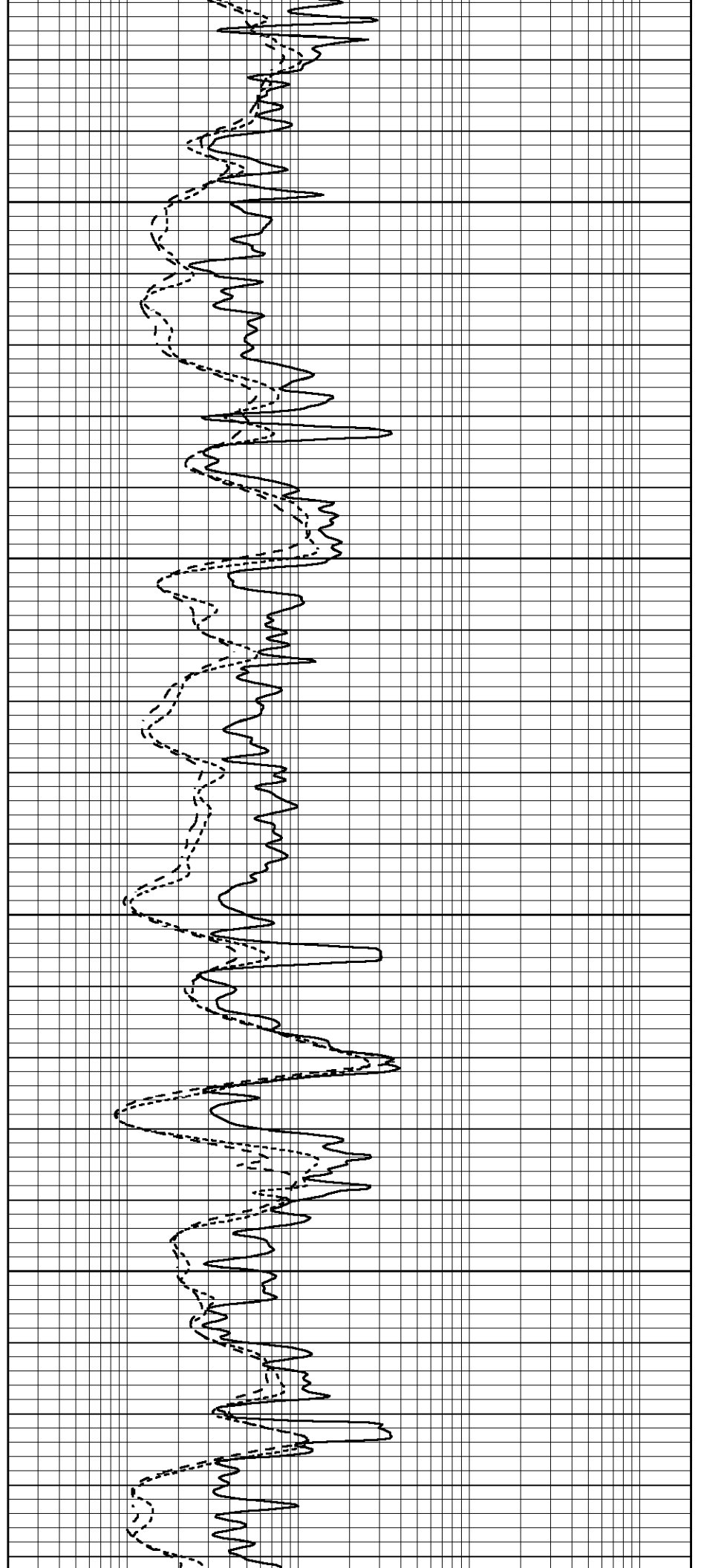


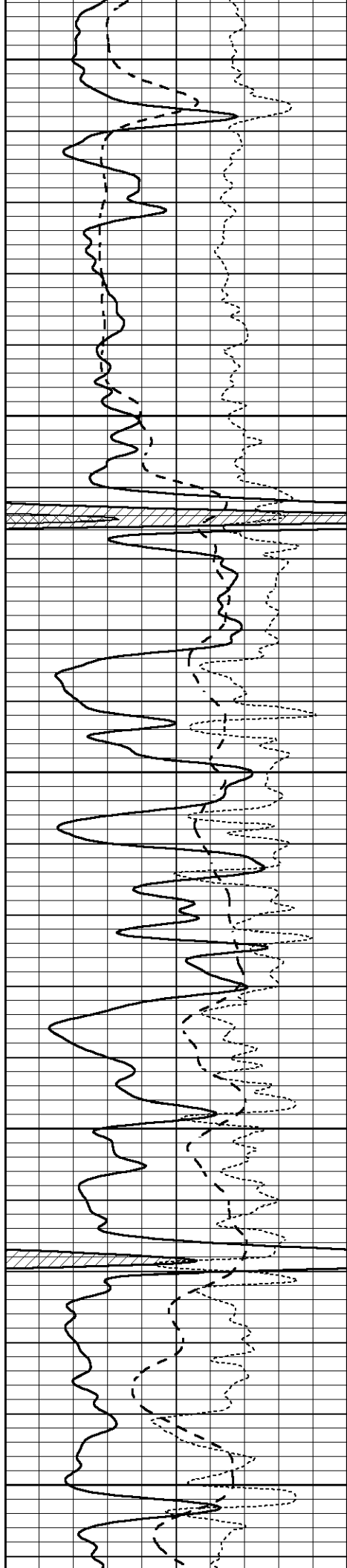
3450

3500

3550

3600





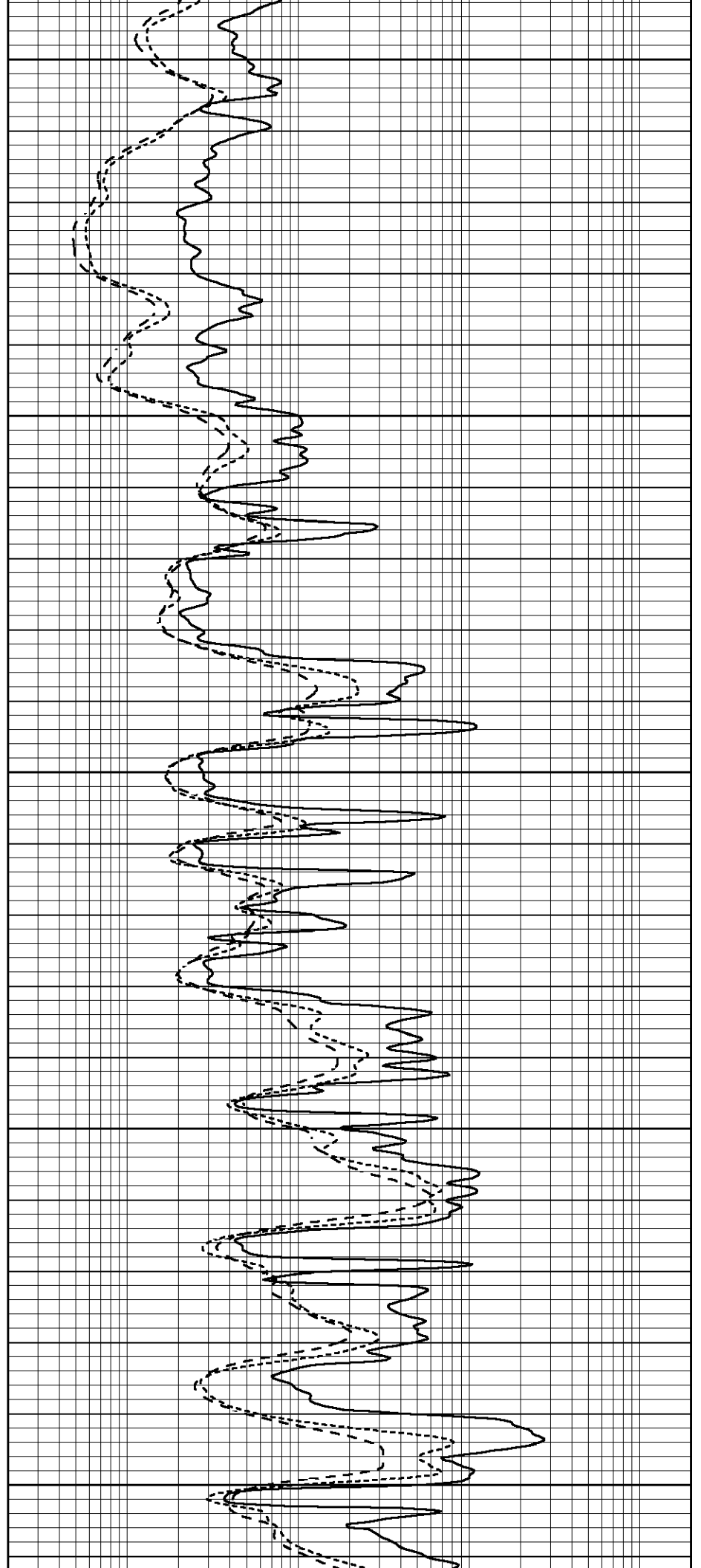
3650

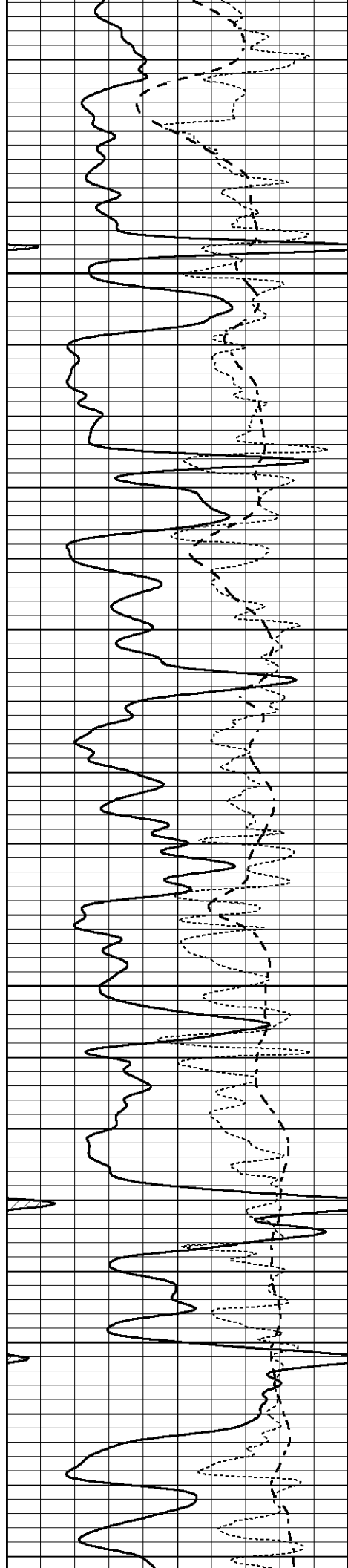
3700

3750

3800

3850



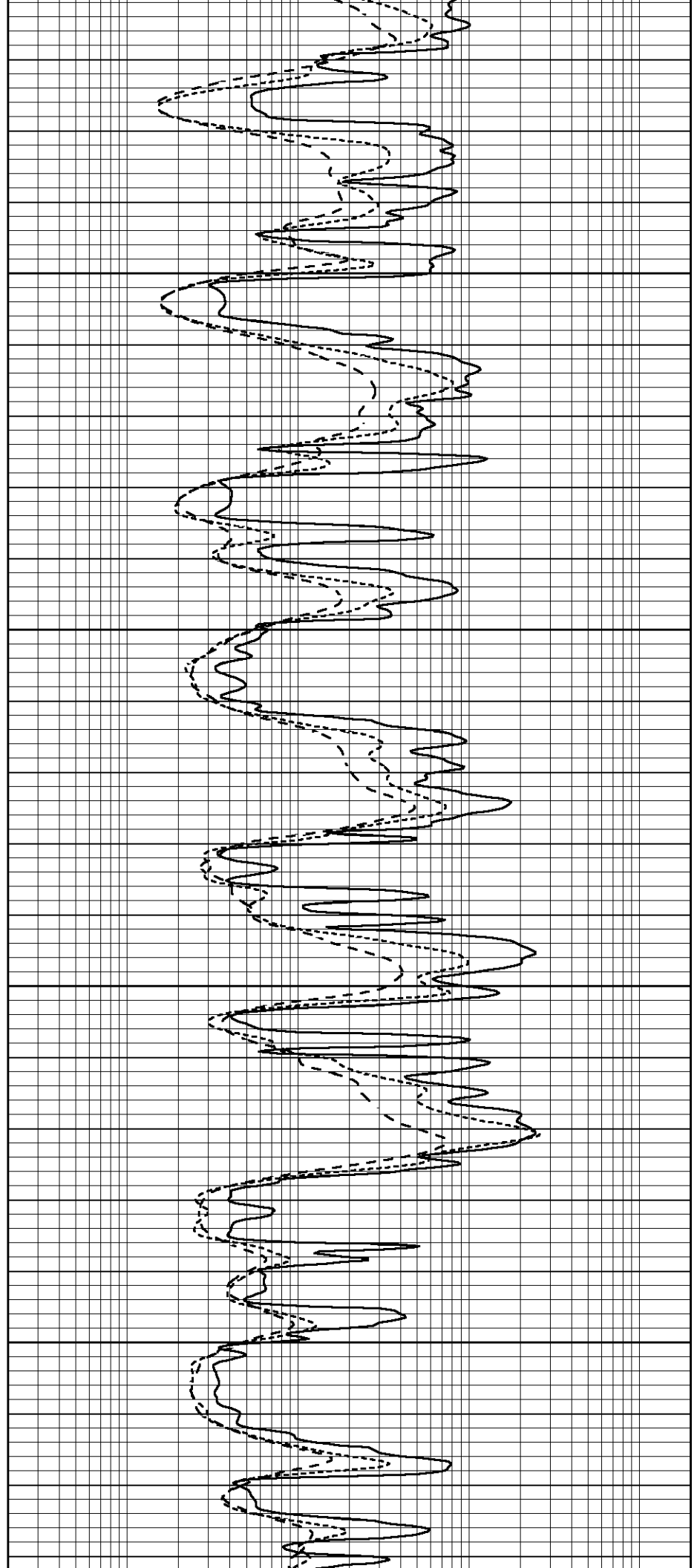


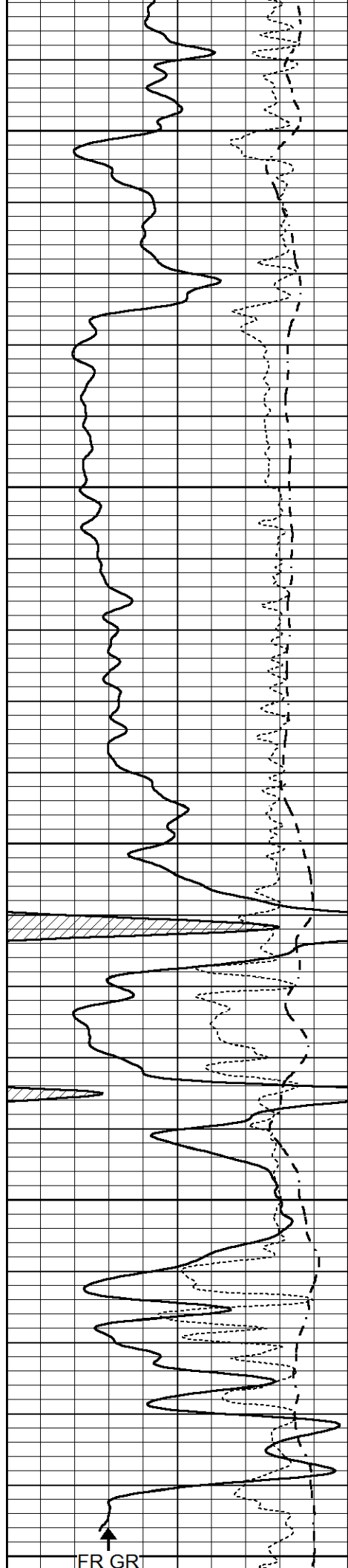
3900

3950

4000

4050





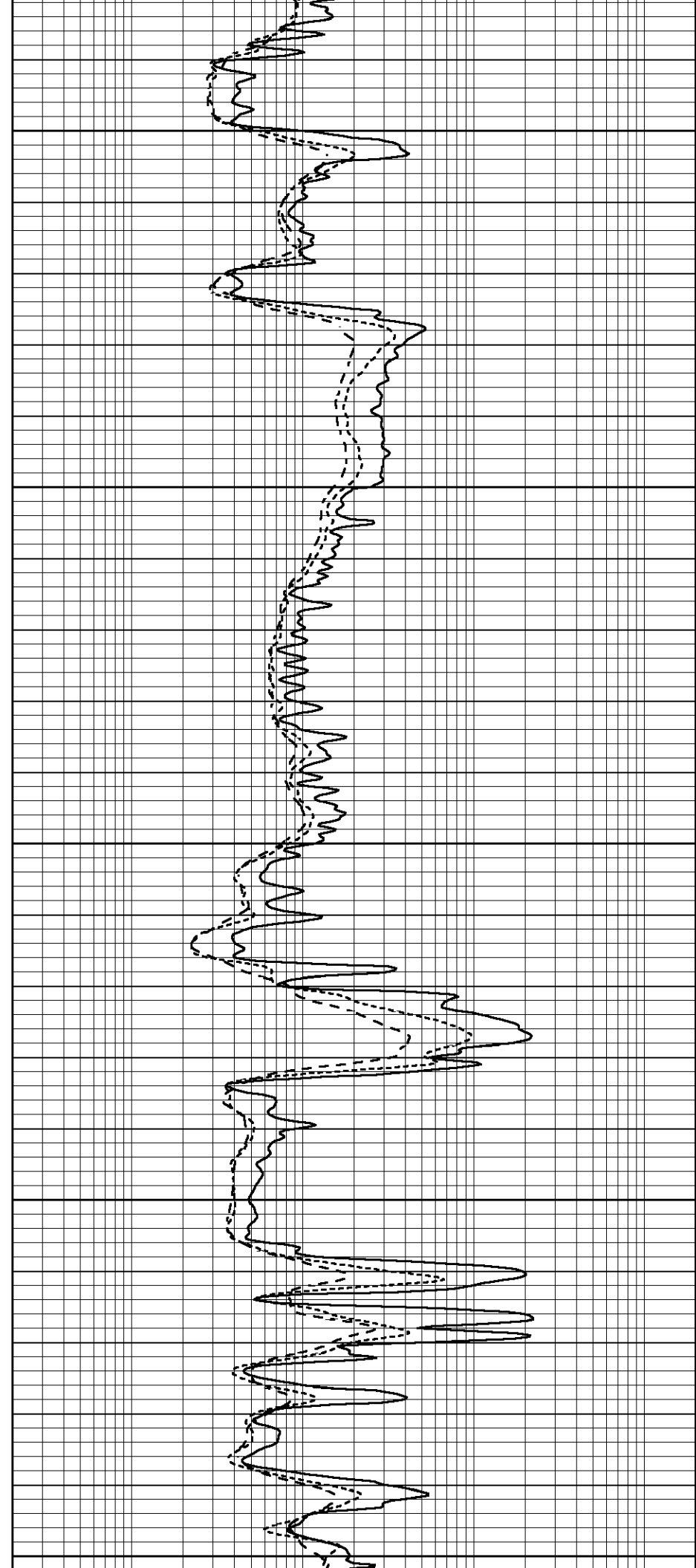
4100

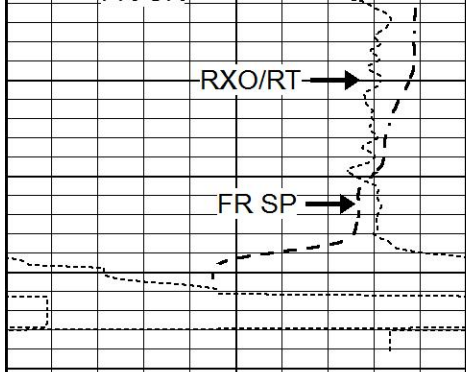
4150

4200

4250

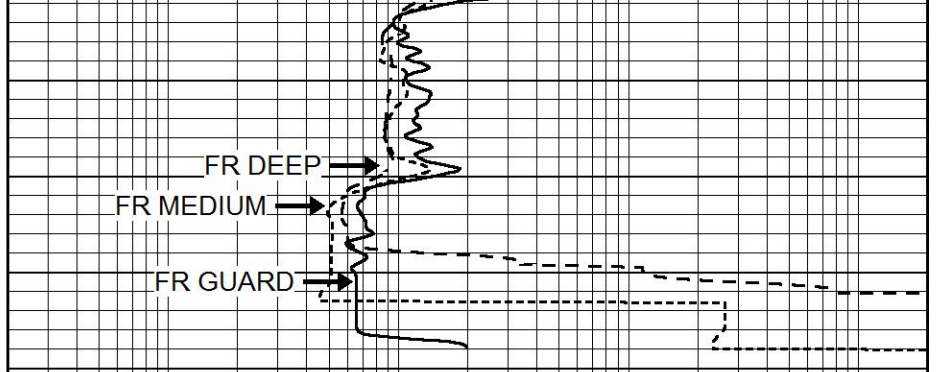
4300





LTD 4333

0	GAMMA RAY (GAPI)	150
-100	SP (mV)	100
-250	Rxo/Rt	50



0.2	SHALLOW GUARD (Ohm-m)	2000
0.2	MEDIUM INDUCTION (Ohm-m)	2000
0.2	DEEP INDUCTION (Ohm-m)	2000

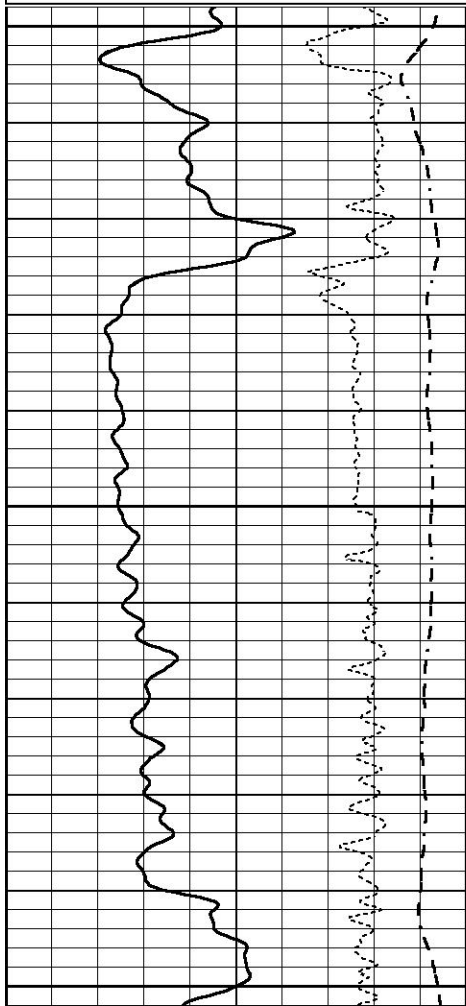


# REPEAT SECTION

Database File 8800pe.db  
 Dataset Pathname pass2R  
 Presentation Format \_dil  
 Dataset Creation Sat Jul 27 01:46:12 2024  
 Charted by Depth in Feet scaled 1:240

0	GAMMA RAY (GAPI)	150
-100	SP (mV)	100
-250	Rxo/Rt	50

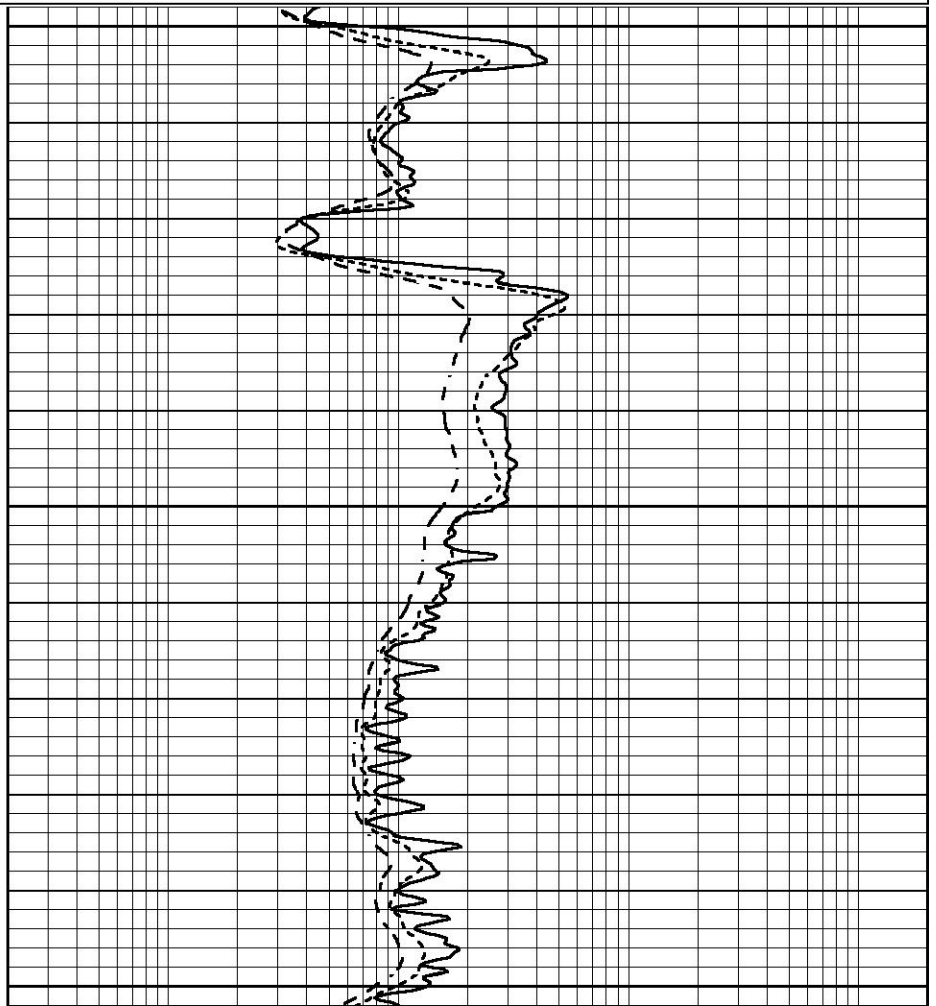
0.2	SHALLOW GUARD (Ohm-m)	2000
0.2	MEDIUM INDUCTION (Ohm-m)	2000
0.2	DEEP INDUCTION (Ohm-m)	2000

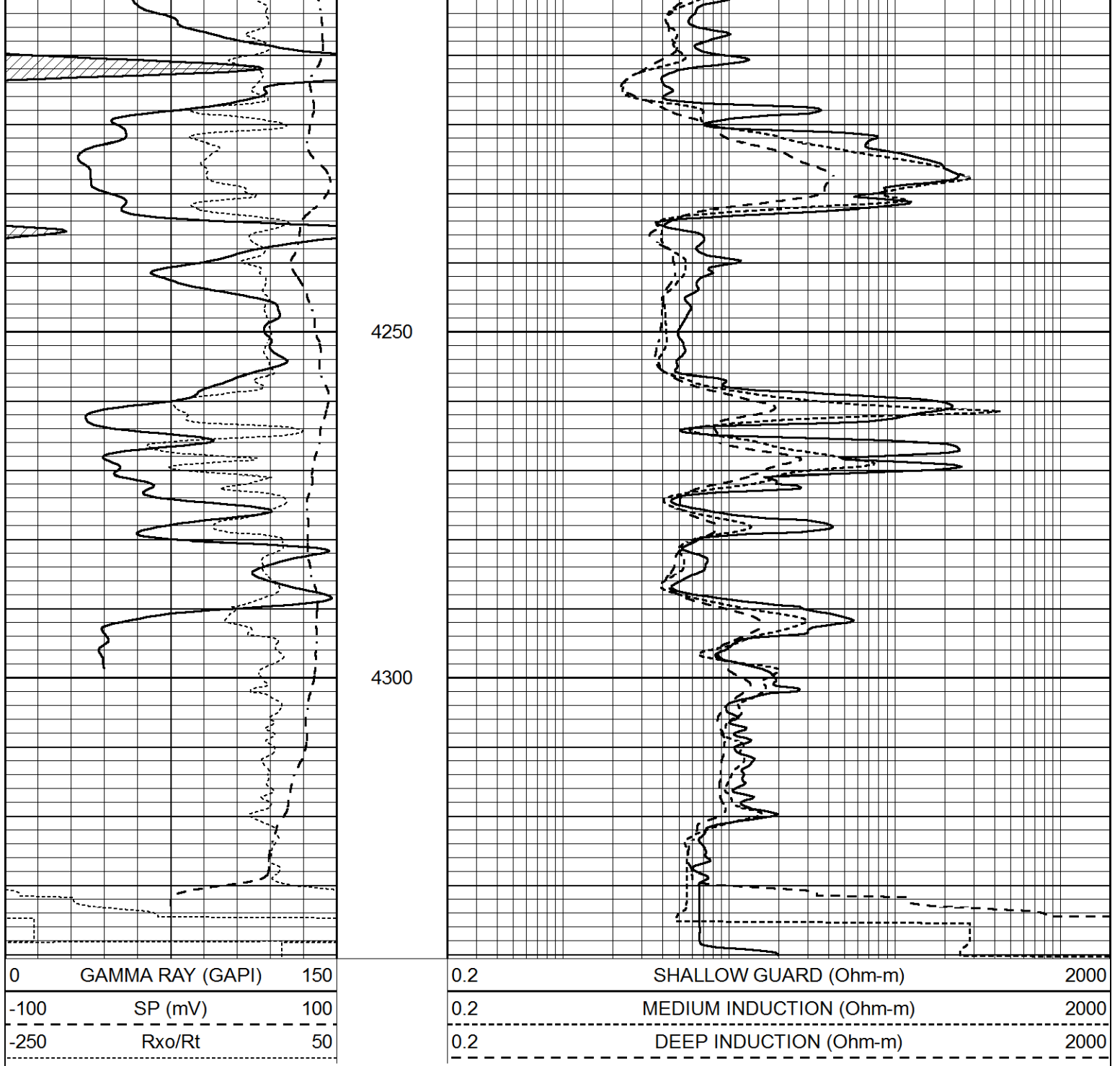


4100

4150

4200





### Calibration Report

Database File 8800pe.db  
 Dataset Pathname pass3M  
 Dataset Creation Sat Jul 27 01:44:42 2024

### Dual Induction Calibration Report

Serial-Model: FW1410-56-Probe  
 Surface Cal Performed: Tue Apr 30 11:10:17 2024  
 Downhole Cal Performed: Tue Jul 25 12:15:37 2017  
 After Survey Verification Performed: Tue Jul 25 12:15:38 2017

#### Surface Calibration

Loop:	Readings		References	Results	
	Air	Loop		m	b
Deep	0.008	0.765	1.000 400.000 mmho/m	520.000	18.000

Medium	-0.056	0.761	V	1.000	464.000	mmho/m	540.000	195.000
Internal:	Zero	Cal		Zero	Cal		m	b
Deep	0.005	0.624	V	0.000	400.000	mmho/m	645.611	-3.034
Medium	0.012	0.721	V	0.000	464.000	mmho/m	653.591	-7.532

Downhole Calibration								
	Readings			References			Results	
	Zero	Cal		Zero	Cal		m'	b'
Deep	-0.647	301.329	mmho/m	-0.780	336.378	mmho/m	1.117	-0.058
Medium	38.256	411.013	mmho/m	39.046	441.706	mmho/m	1.080	-2.280
LL3		7.471	V		2500.000	Ohm-m		
		0.001	V		20.000	Ohm-m		
		-7.085	V		4000.000	mmho-m		

After Survey Verification								
	Readings			Targets			Results	
	Zero	Cal		Zero	Cal		m'	b'
Deep	0.000	0.000	mmho/m	-0.647	301.329	mmho/m	1.000	0.000
Medium	0.000	0.000	mmho/m	38.256	411.013	mmho/m	1.000	0.000
LL3		0.000	Ohm-m		1500.000	Ohm-m		
		0.000	Ohm-m		20.000	Ohm-m		
		0.000	mmho-m		3745.000	mmho-m		

Litho Density Calibration Report  
Serial: 003      Model: PRB

Master Calibration					Performed Mon May 22 11:48:40 2023			
	Background		Magnesium		Aluminum		Aluminum+Fe	
Window 1	1512.3		7465.7		2749.0		2519.6	cps
Window 2	1398.8		6705.7		2507.3		2313.8	cps
Window 3	1289.2		5259.5		2124.1		2009.6	cps
Window 4	351.1		351.6		351.8		353.2	cps
Long Space	0.0		5306.9		1108.5		915.0	cps
Short Space	3.3		2239.9		1441.2		1212.0	cps
Rho			1.7100		2.5900		0.0000	g/cc
Pe			2.0000		2.7500		5.7900	
Rib Angle	: 44.3		Rib Slope	: 0.975	Density/Spine Ratio		: 0.541	
Spine Angle	: 74.3		Spine Slope	: 3.551	Spine Intercept		: -18.8	

Before Survey Verification					Performed Wed Dec 31 18:00:00 1969			
Window 1	0.0		0.0		0.0		0.0	cps
Window 2	0.0		0.0		0.0		0.0	cps
Window 3	0.0		0.0		0.0		0.0	cps
Window 4	0.0		0.0		0.0		0.0	cps
Long Space	0.0		0.0		0.0		0.0	cps
Short Space	0.0		0.0		0.0		0.0	cps
Measured Rho			0.0000		0.0000		0.0000	g/cc
Measured Correction			0.0000		0.0000		0.0000	g/cc
Measured Pe					0.0000		0.0000	

After Survey Verification					Performed Wed Dec 31 18:00:00 1969			
Window 1	0.0		0.0		0.0		0.0	cps

Window 2	0.0	0.0	0.0	0.0	cps
Window 3	0.0	0.0	0.0	0.0	cps
Window 4	0.0	0.0	0.0	0.0	cps
Long Space	0.0	0.0	0.0	0.0	cps
Short Space	0.0	0.0	0.0	0.0	cps
Measured Rho		0.0000	0.0000	0.0000	g/cc
Measured Correction		0.0000	0.0000	0.0000	g/cc
Measured Pe			0.0000	0.0000	

Compensated Neutron Calibration Report

Serial Number: 080621PMC  
Tool Model: NABORS

PRE-SURVEY VERIFICATION

Detector	Readings	Measured	Target
Short Space	cps		
Long Space	cps	pu	pu

POST-SURVEY VERIFICATION

Detector	Readings	Measured	Target
Short Space	cps		
Long Space	cps	pu	pu

Gamma Ray Calibration Report

Serial Number: 46001  
Tool Model: Probe1  
Performed: Thu Apr 20 09:55:57 2023

Calibrator Value: 1.0 GAPI

Background Reading: 0.0 cps  
Calibrator Reading: 1.0 cps

Sensitivity: 0.4300 GAPI/cps