



**COMPENSATED  
DENSITY/NEUTRON  
LOG**

Company SANGUINE RESOURCES, LLC.  
Well SUPPES #1-14  
Field UNNAMED  
County NESS State KANSAS

Location: API #: 15-135-26219-0000  
1375 FNL & 1241 FWL  
NE - NE - SW - NW  
SEC 6 TWP 23S RGE 32W  
Permanent Datum GROUND LEVEL Elevation 2304  
Log Measured From KELLY BUSHING 7' A.G.L  
Drilling Measured From KELLY BUSHING  
Other Services  
DIL  
Elevation  
K.B. 2311  
D.F. 2309  
G.L. 2304

Date	7/26/24
Run Number	ONE
Depth Driller	4335
Depth Logger	4333
Bottom Logged Interval	4309
Top Log Interval	2200
Casing Driller	8.625 @ 223
Casing Logger	223
Bit Size	7.875
Type Fluid in Hole	CHEMICAL MUD
Density / Viscosity	9.1/61
pH / Fluid Loss	11.0/6.4
Source of Sample	FLOWLINE
Rm @ Meas. Temp	.800 @ 86F
Rmf @ Meas. Temp	.600 @ 86F
Rmc @ Meas. Temp	1.60 @ 86F
Source of Rmf / Rmc	MEASUREMENT
Rm @ BHT	.730 @ 119F
Time Circulation Stopped	2 HOURS
Time Logger on Bottom	11:00 P.M.
Maximum Recorded Temperature	119F
Equipment Number	3802
Location	HAYS, KANSAS
Recorded By	COLE ROBBEN
Witnessed By	SEAN DEENIHAN

<<< Fold Here >>>

All interpretations are opinions based on inferences from electrical or other measurements and we cannot and do not guarantee the accuracy or correctness of any interpretation, and we shall not, except in the case of gross or willful negligence on our part, be liable or responsible for any loss, costs, damages, or expenses incurred or sustained by anyone resulting from any interpretation made by any of our officers, agents or employees. These interpretations are also subject to our general terms and conditions set out in our current Price Schedule.

Comments

THANK YOU FOR USING ELI WIRELINE SERVICES, HAYS, KS. ( 785 ) 628-6395

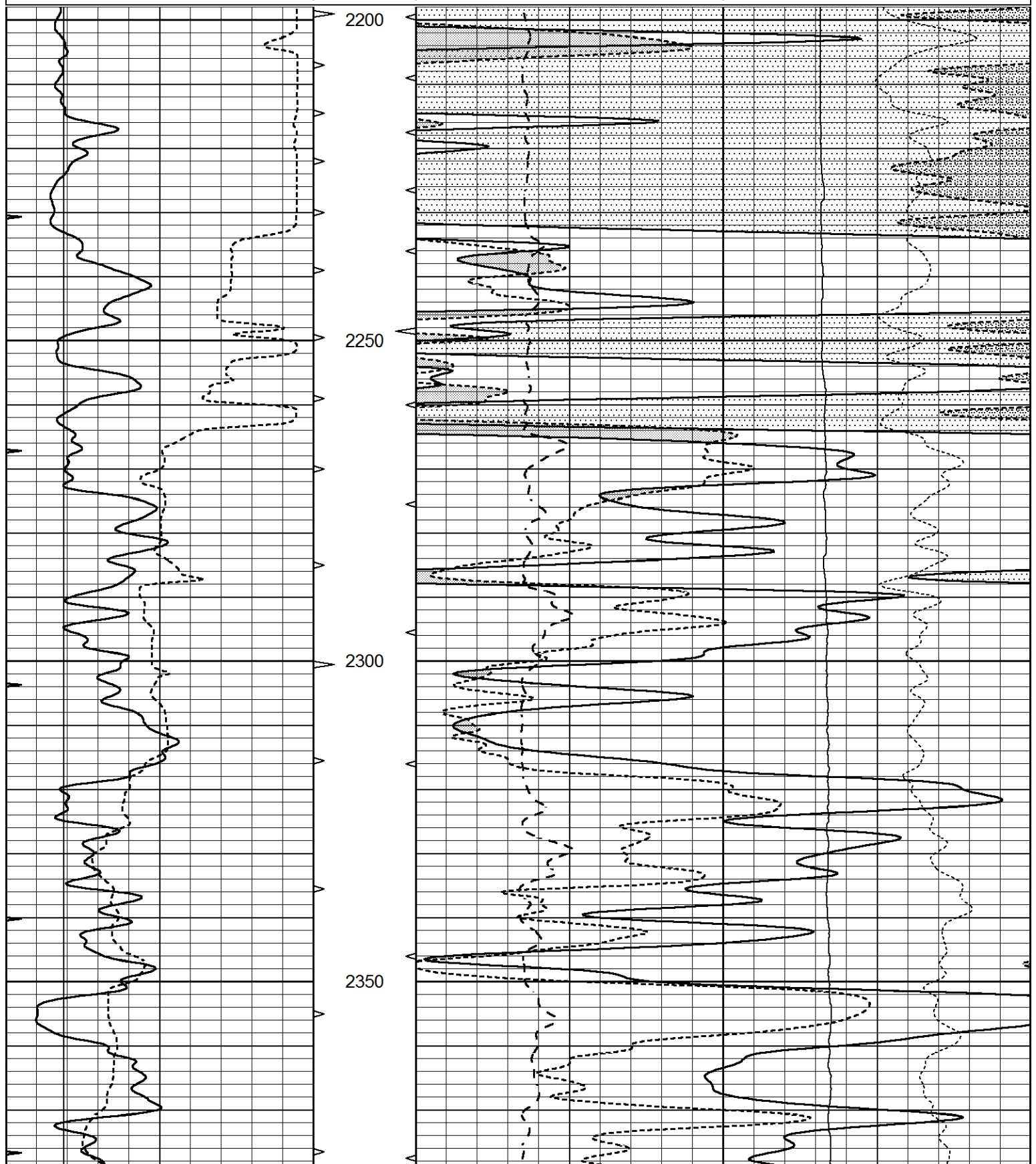
DIRECTIONS:  
FROM BROWNELL, KANSAS EAST ON HWY 4, 3 MILES TO ROAD 'DD', SOUTH 5 MILES TO ROAD 210, 1 1/2 MILES WEST, NORTH INTO

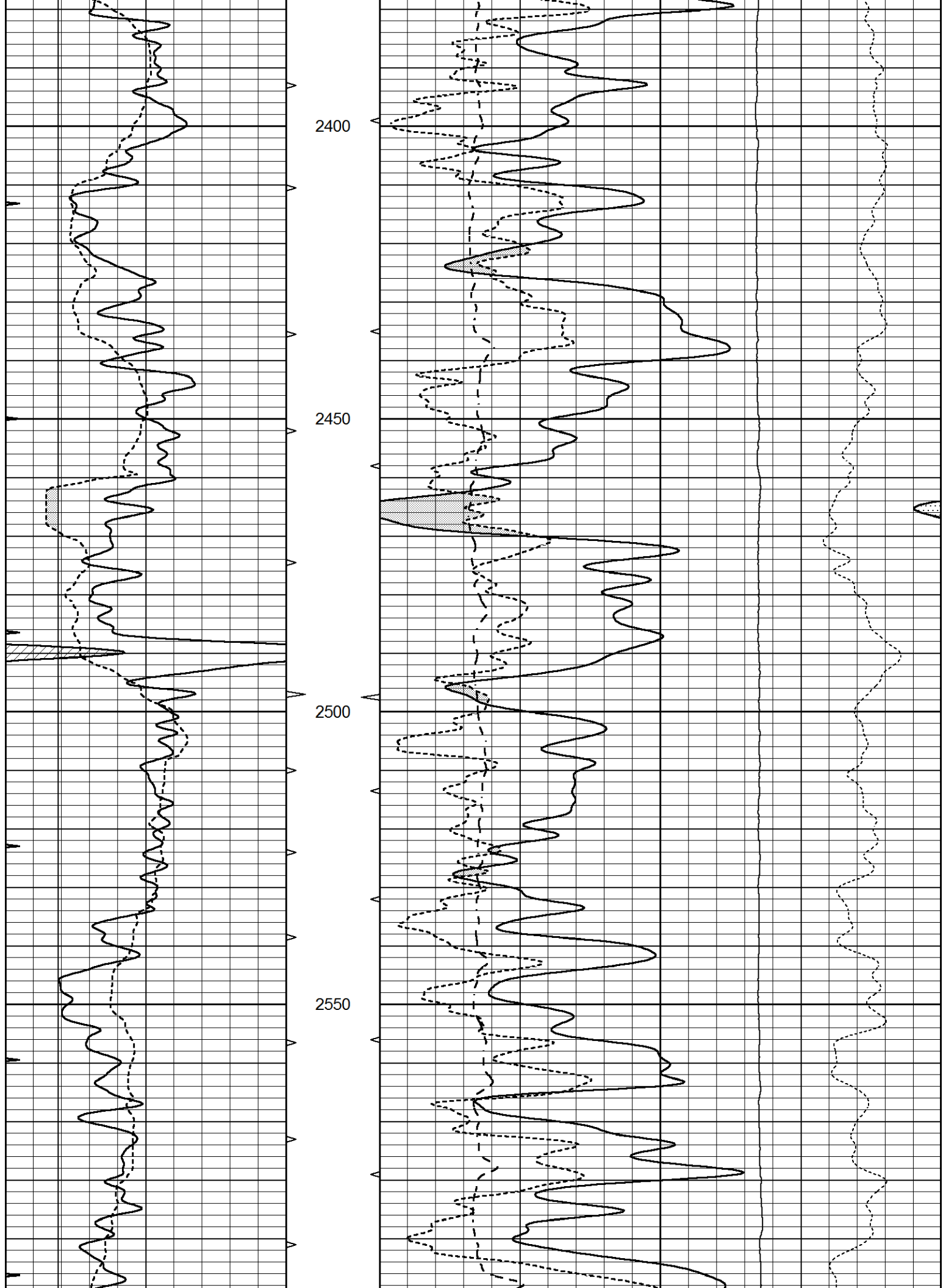


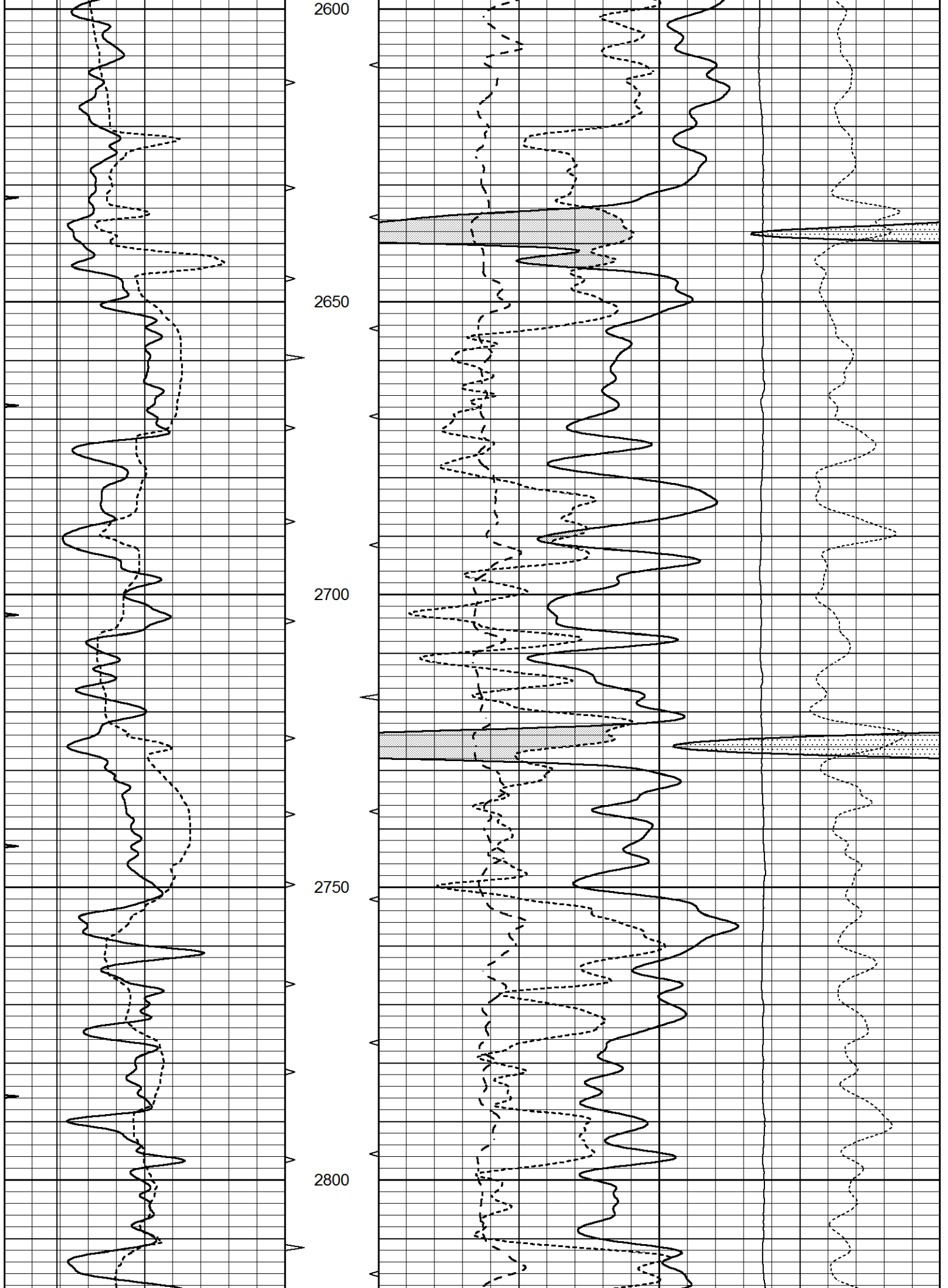
**MAIN SECTION**

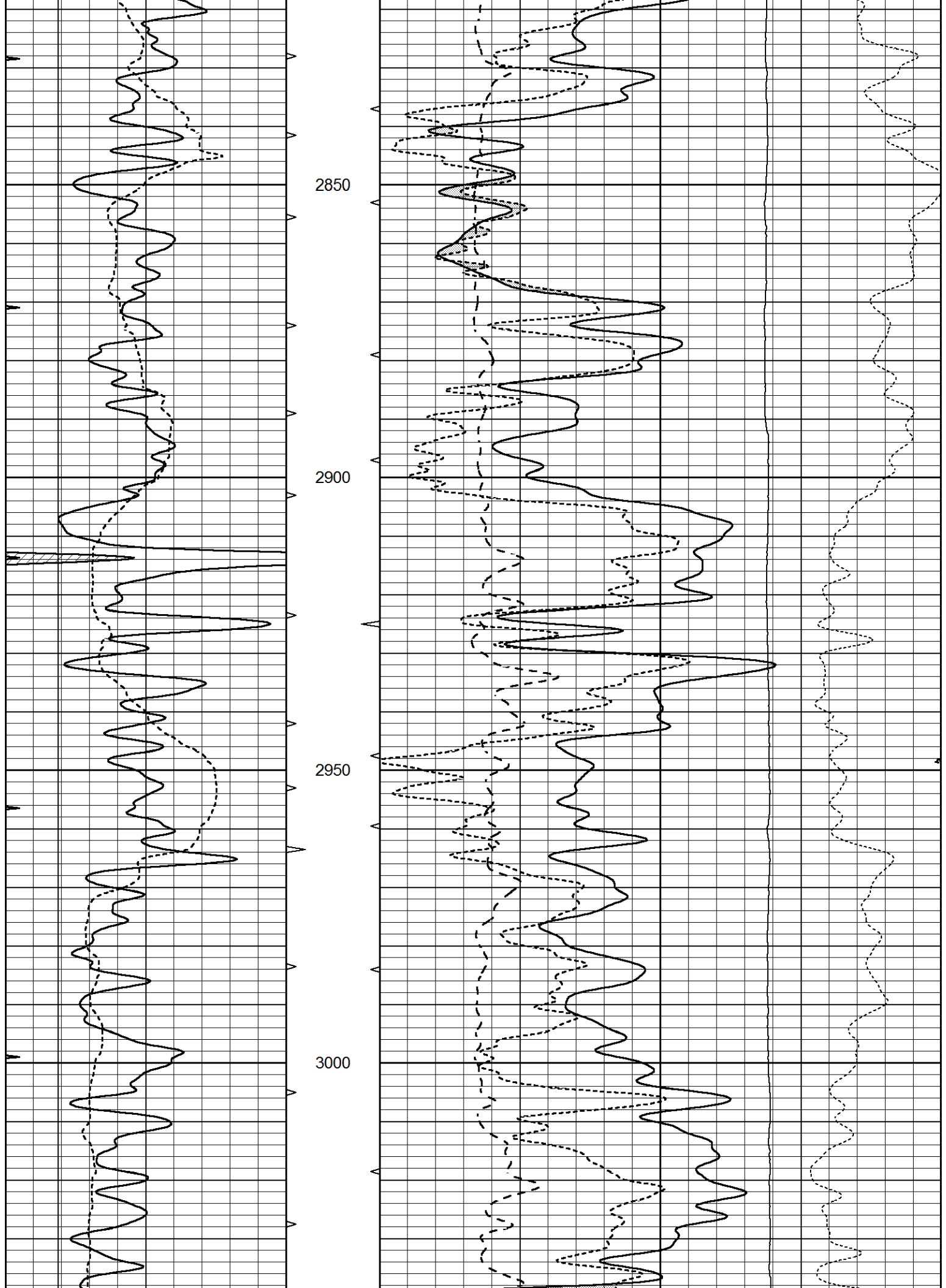
Database File 8800pe.db  
 Dataset Pathname pass3M  
 Presentation Format \_ldt\_neu  
 Dataset Creation Sat Jul 27 01:44:42 2024  
 Charted by Depth in Feet scaled 1:240

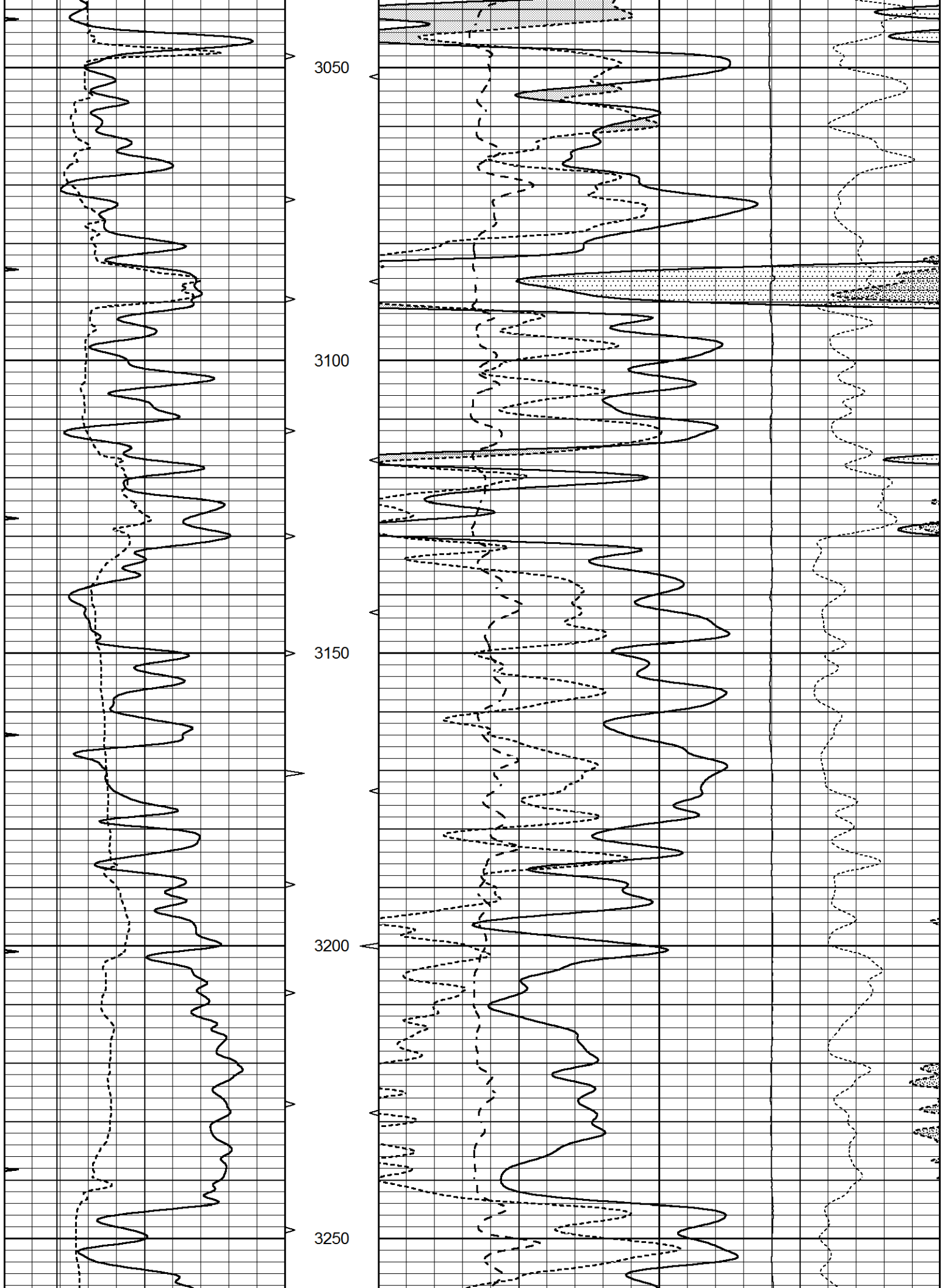
0	GAMMA RAY (GAPI)	150	ABHV	30	COMPENSATED DENSITY (pu)			-10	
6	CALIPER (in)	16	10 (ft3)	0	COMPENSATED NEUTRON (pu)			-10	
0	MINMK	20	TBHV	0	PE	10	-0.25	CORRECTION (g/cc)	0.25
			0 (ft3)	10			0	LTEN (lb)	5000

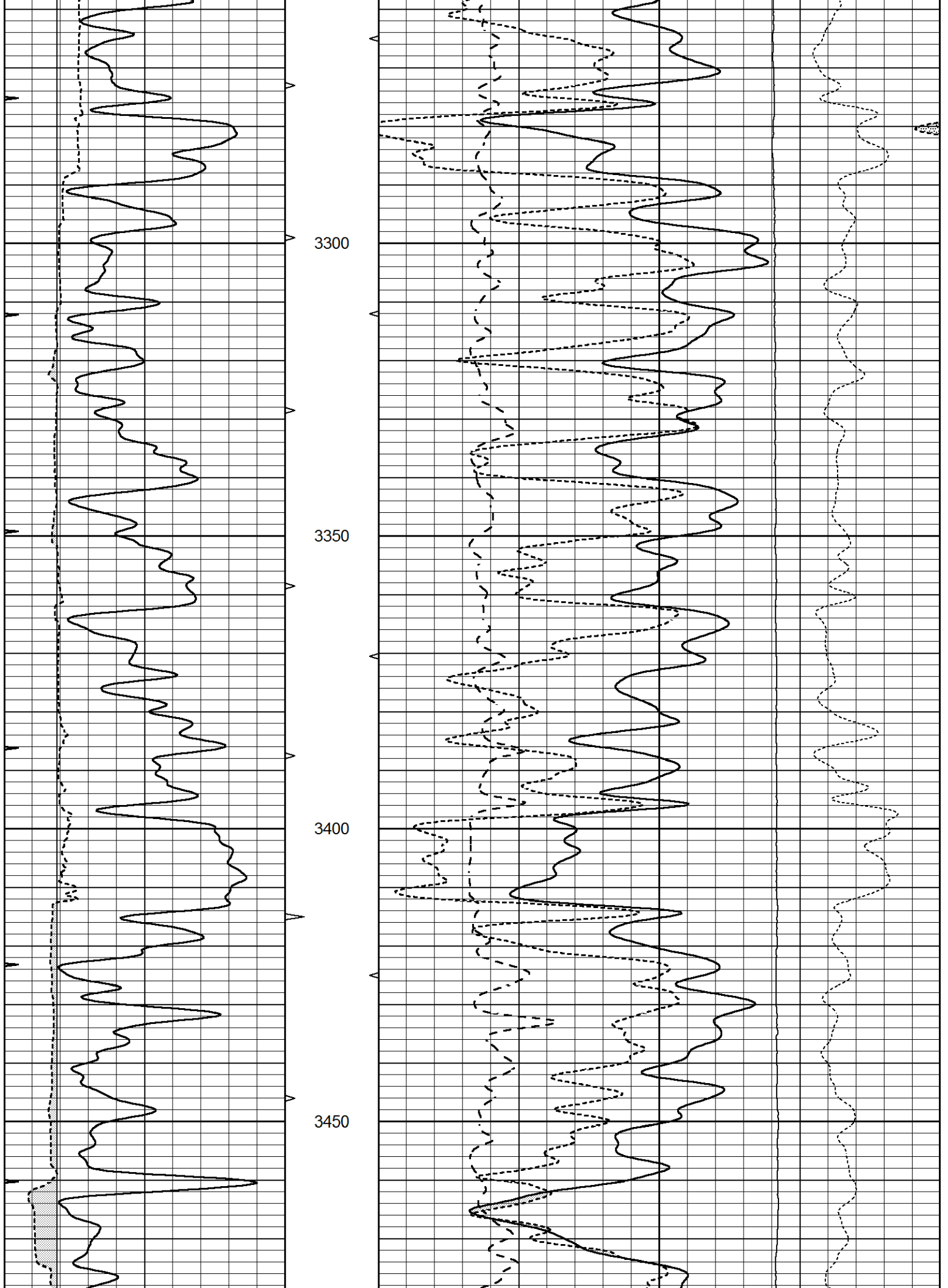


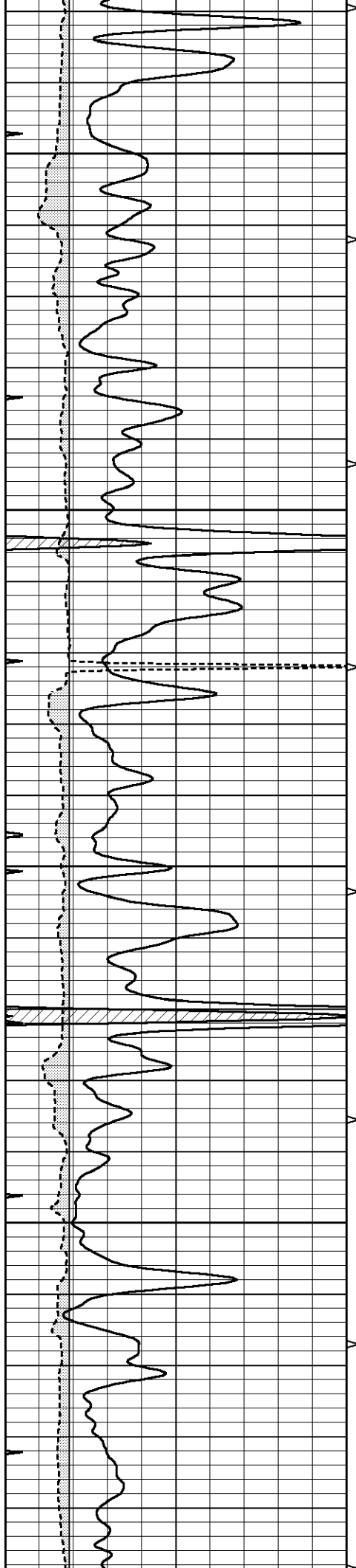










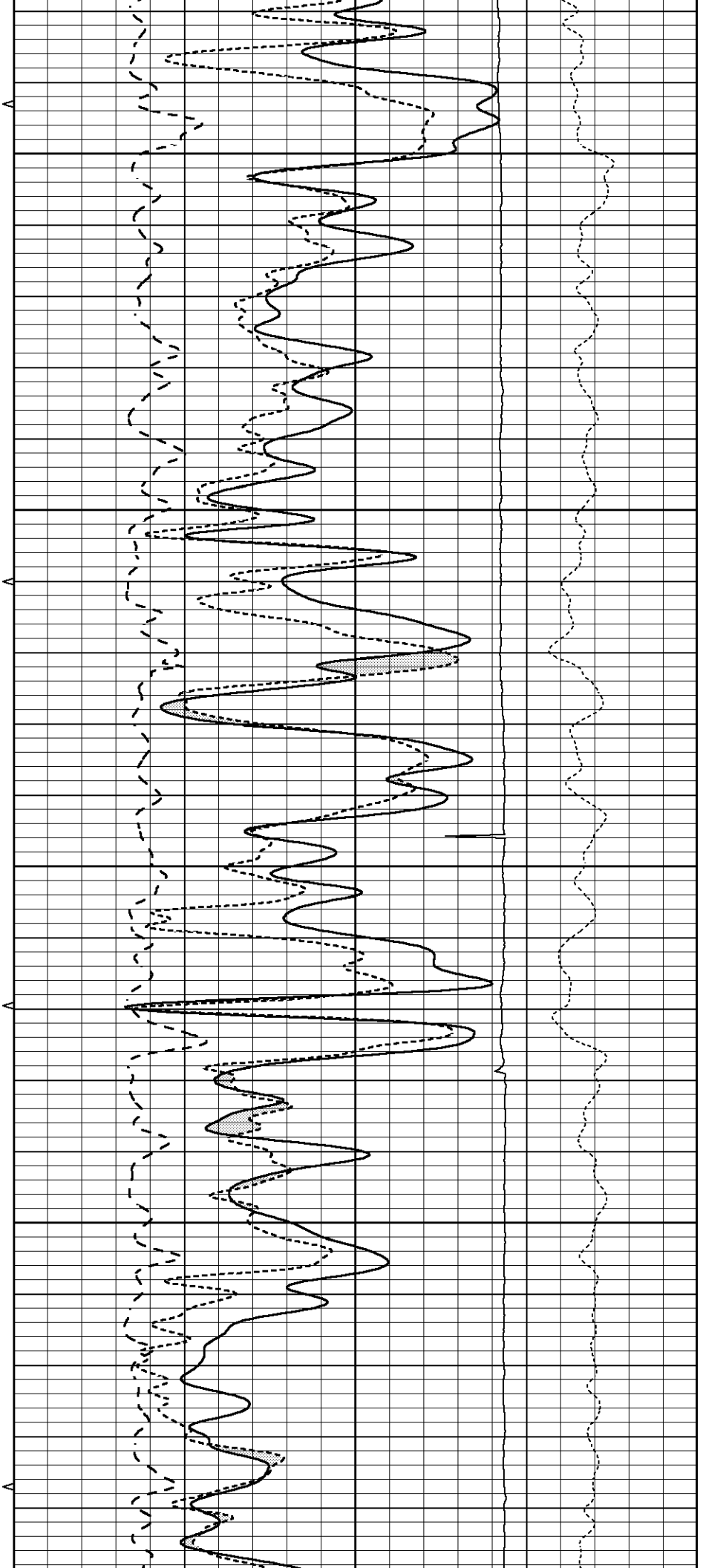


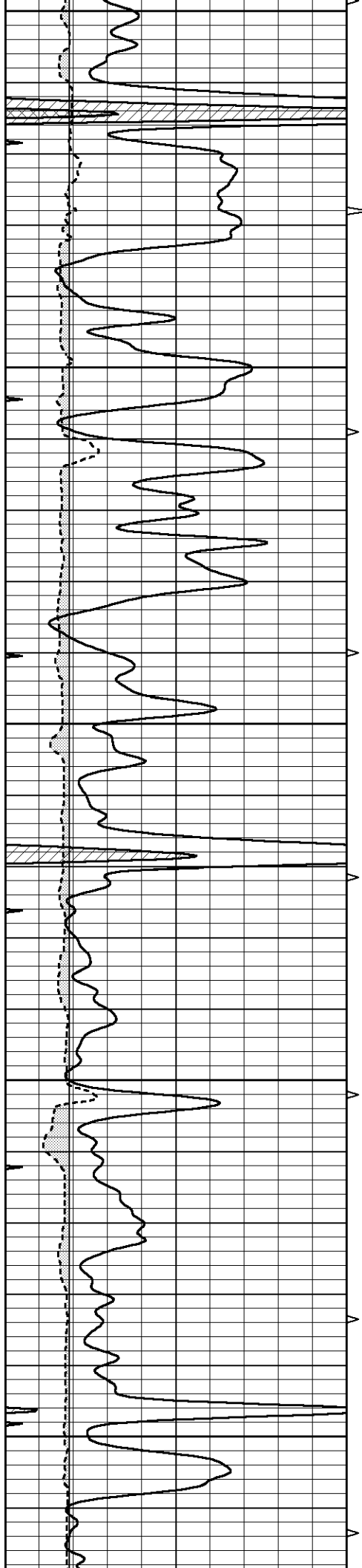
3500

3550

3600

3650





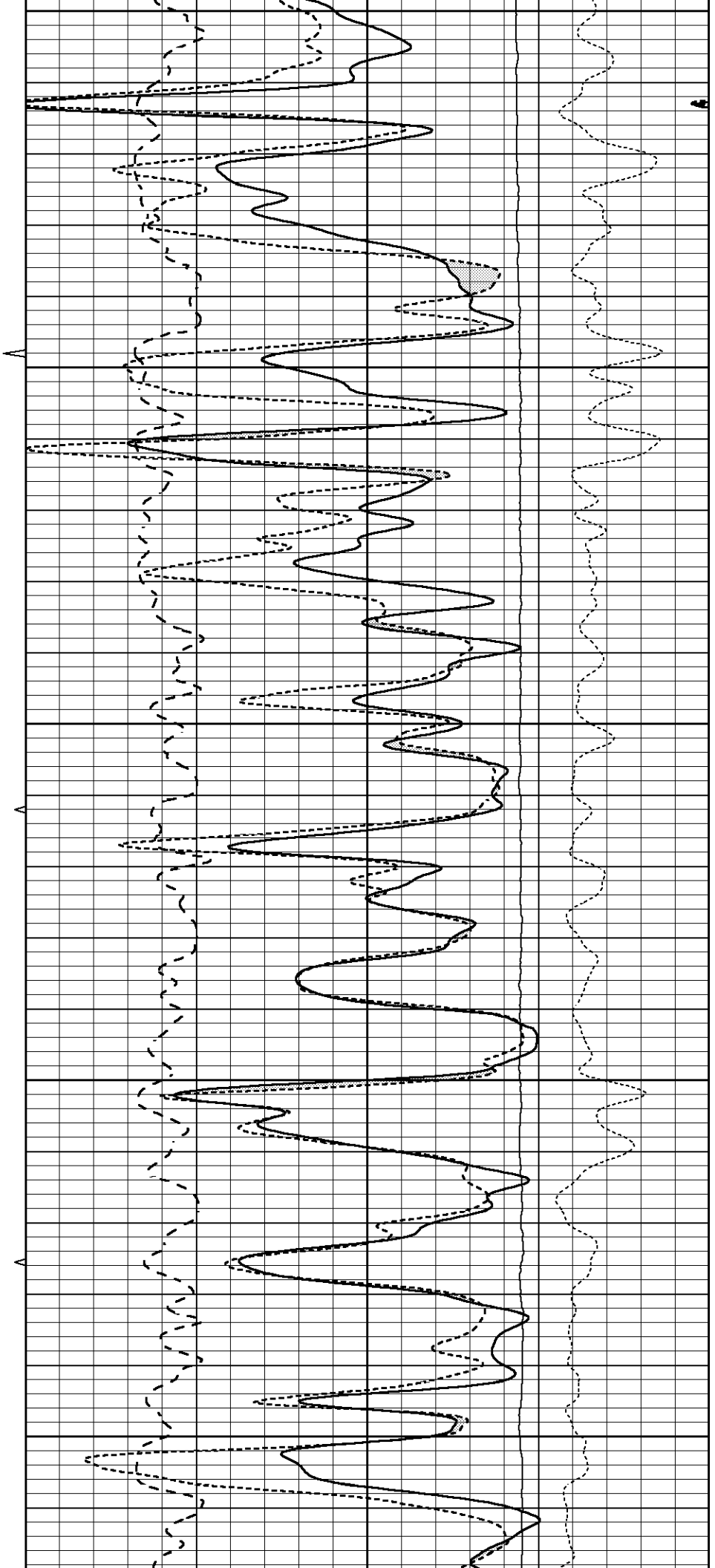
3700

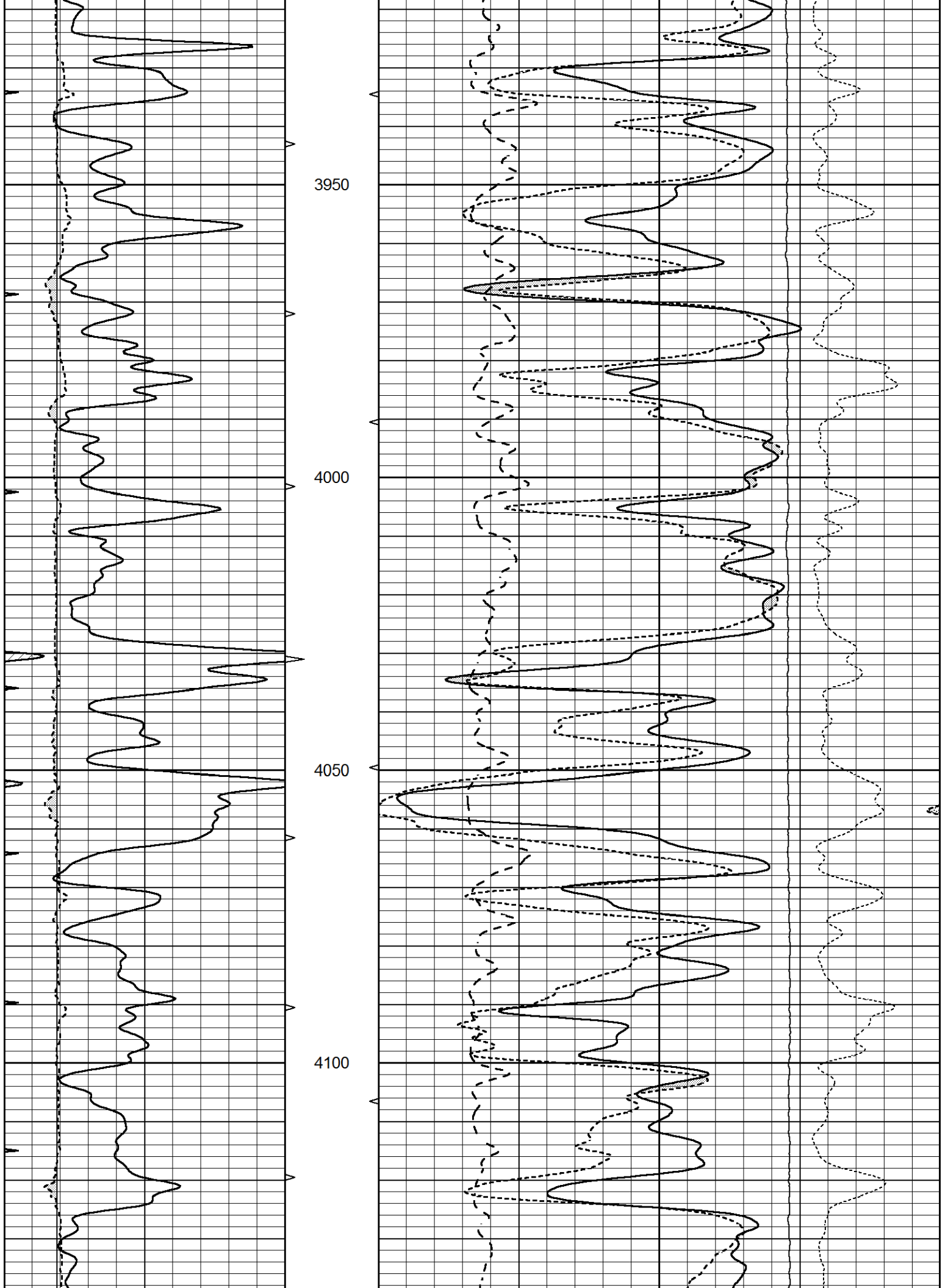
3750

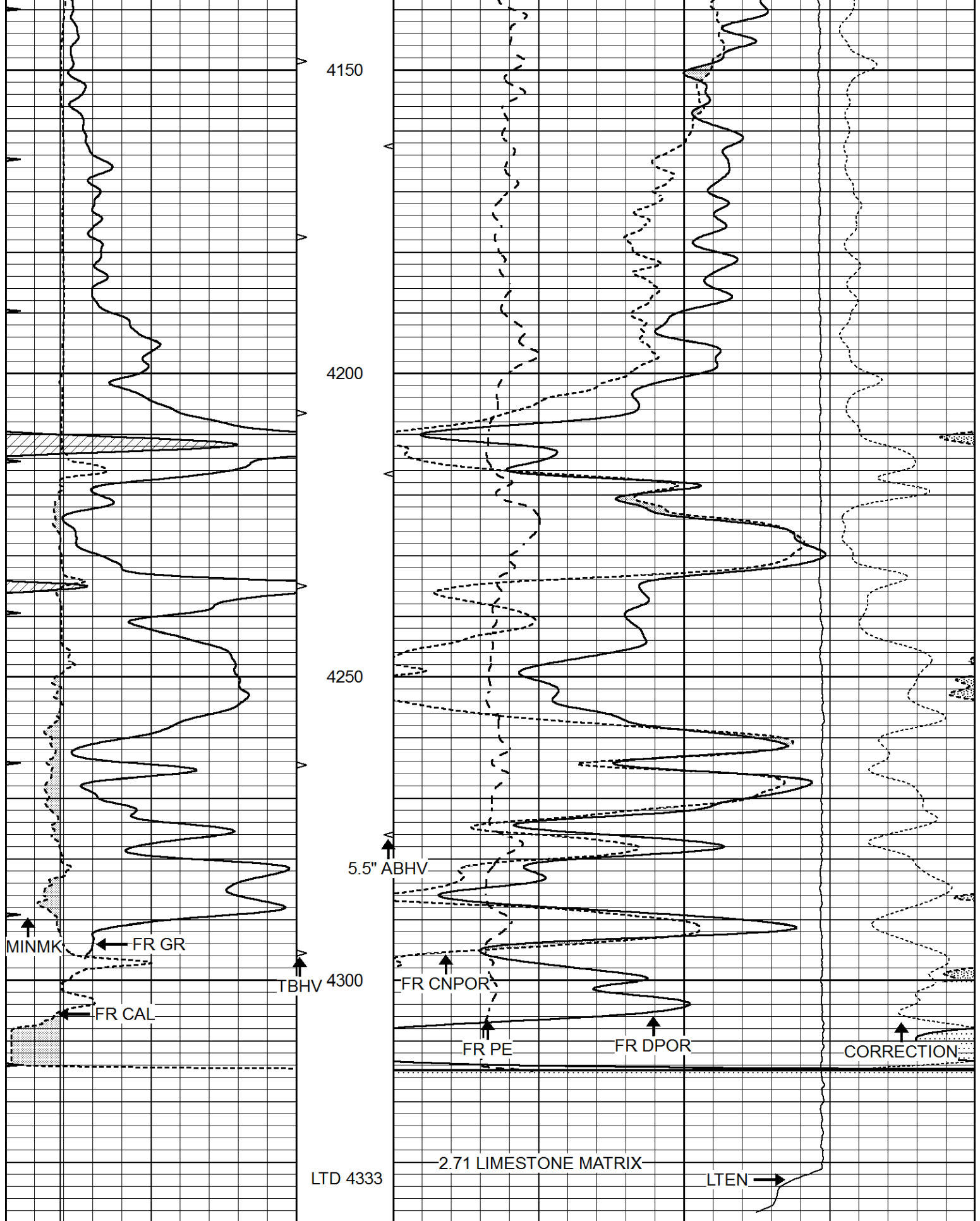
3800

3850

3900







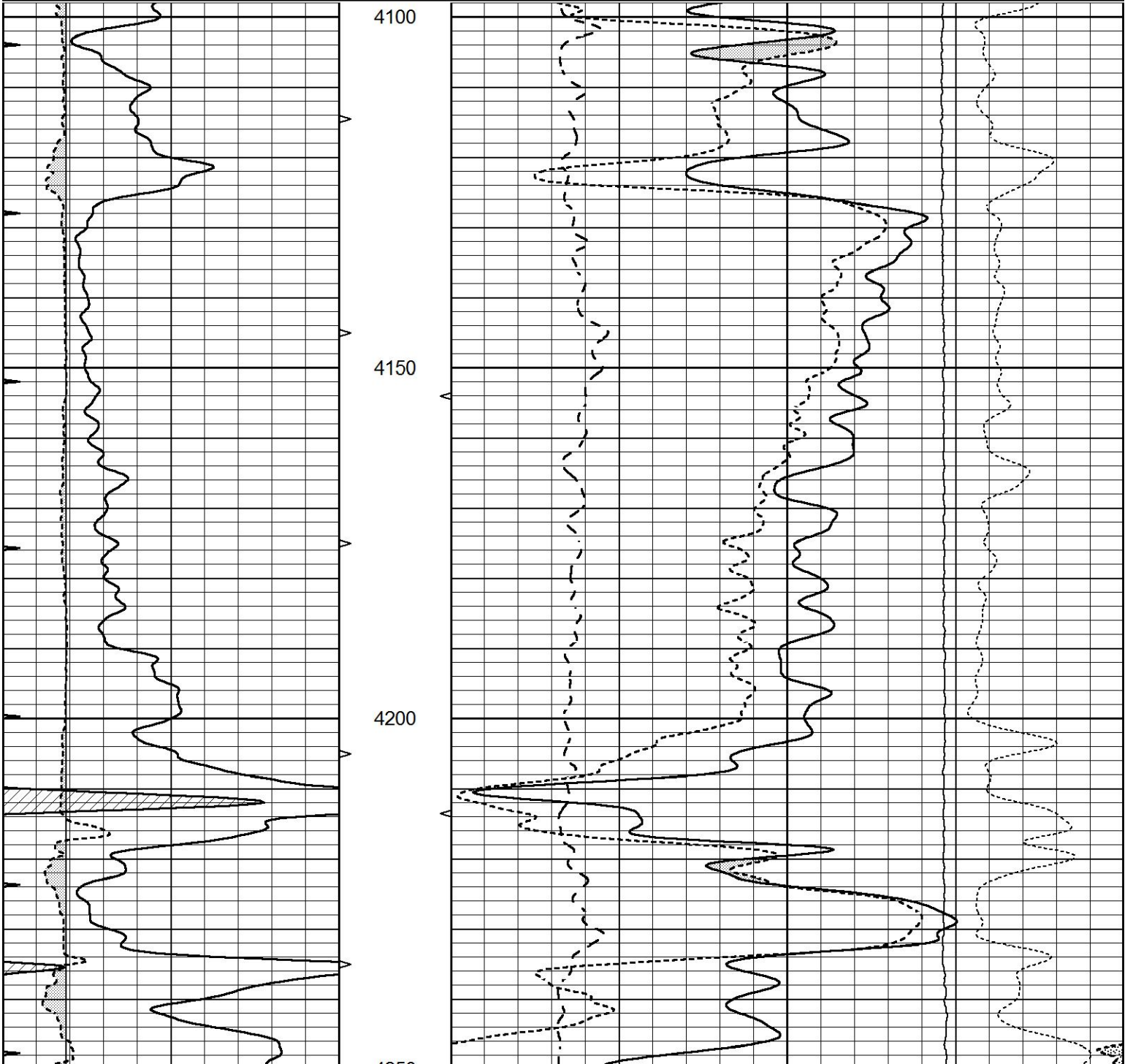
0	GAMMA RAY (GAPI)	150	ABHV	30	COMPENSATED DENSITY (pu)	-10
6	CALIPER (in)	16	10 (ft3)	0 30	COMPENSATED NEUTRON (pu)	-10
0	MINMK	20	TBHV	0	PE	10 -0.25 CORRECTION (g/cc)
			0 (ft3)	10		0 LTEN (lb)
						5000

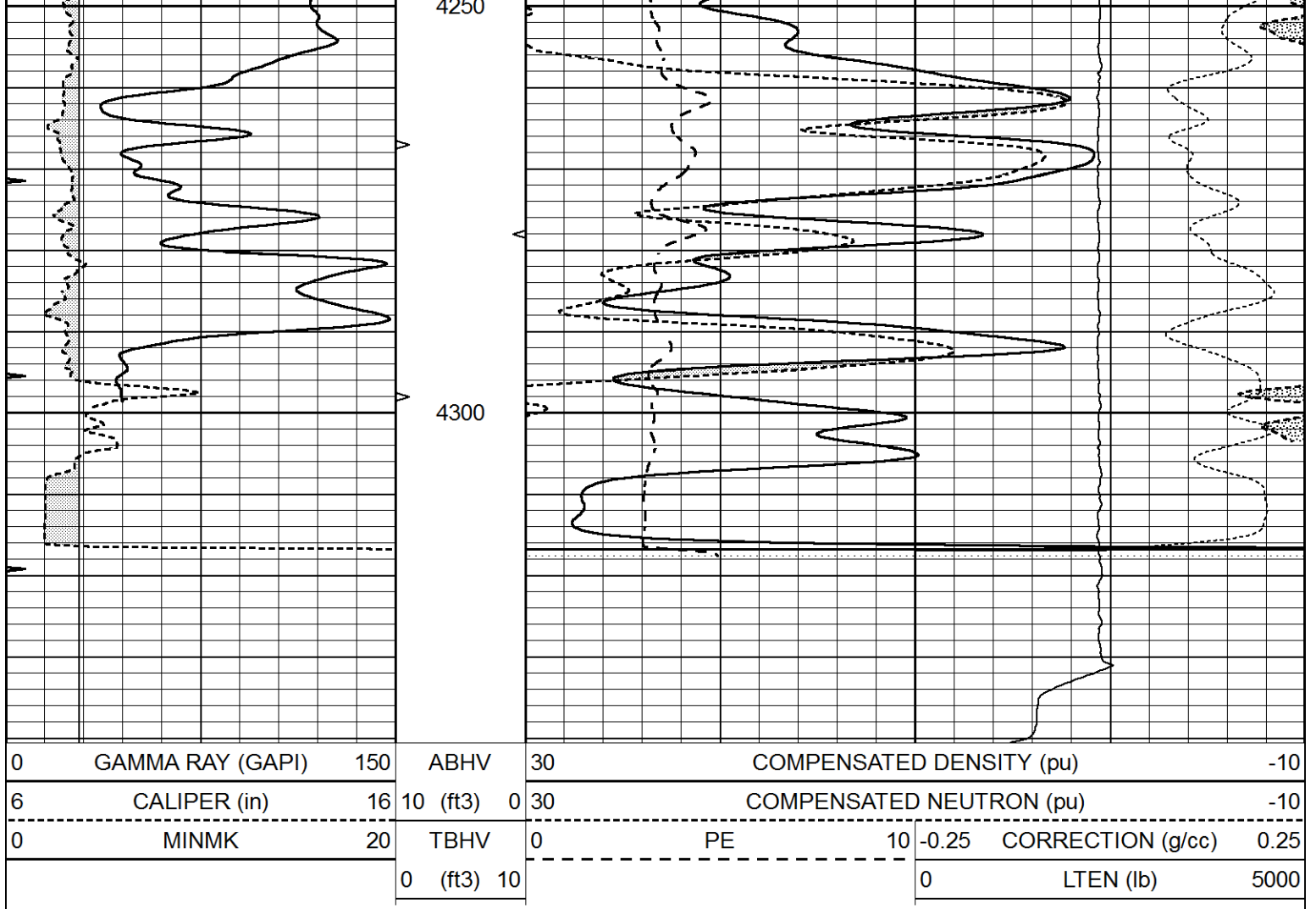


# REPEAT SECTION

Database File 8800pe.db  
 Dataset Pathname pass2R  
 Presentation Format \_ldt\_neu  
 Dataset Creation Sat Jul 27 01:46:12 2024  
 Charted by Depth in Feet scaled 1:240

0	GAMMA RAY (GAPI)	150	ABHV	30	COMPENSATED DENSITY (pu)	-10			
6	CALIPER (in)	16	10 (ft3)	0	30	COMPENSATED NEUTRON (pu)	-10		
0	MINMK	20	TBHV	0	10	PE	-0.25	CORRECTION (g/cc)	0.25
			0 (ft3)	10			0	LTEN (lb)	5000





### Calibration Report

Database File 8800pe.db  
 Dataset Pathname pass3M  
 Dataset Creation Sat Jul 27 01:44:42 2024

### Dual Induction Calibration Report

Serial-Model: FW1410-56-Probe  
 Surface Cal Performed: Tue Apr 30 11:10:17 2024  
 Downhole Cal Performed: Tue Jul 25 12:15:37 2017  
 After Survey Verification Performed: Tue Jul 25 12:15:38 2017

#### Surface Calibration

Loop:	Readings			References			Results	
	Air	Loop		Air	Loop		m	b
Deep	0.008	0.765	V	1.000	400.000	mmho/m	520.000	18.000
Medium	-0.056	0.761	V	1.000	464.000	mmho/m	540.000	195.000
Internal:	Zero	Cal		Zero	Cal		m	b
Deep	0.005	0.624	V	0.000	400.000	mmho/m	645.611	-3.034
Medium	0.012	0.721	V	0.000	464.000	mmho/m	653.591	-7.532

#### Downhole Calibration

	Readings			References			Results	
	Zero	Cal		Zero	Cal		m'	b'
Deep	-0.647	301.329	mmho/m	-0.780	336.378	mmho/m	1.117	-0.058
Medium	38.256	411.013	mmho/m	39.046	441.706	mmho/m	1.080	2.280

Medium	58.256	411.013	mmho/m	59.048	441.706	mmho/m	1.080	-2.280
LL3		7.471	V		2500.000	Ohm-m		
		0.001	V		20.000	Ohm-m		
		-7.085	V		4000.000	mmho-m		

After Survey Verification								
	Readings			Targets			Results	
	Zero	Cal		Zero	Cal		m'	b'
Deep	0.000	0.000	mmho/m	-0.647	301.329	mmho/m	1.000	0.000
Medium	0.000	0.000	mmho/m	38.256	411.013	mmho/m	1.000	0.000
LL3		0.000	Ohm-m		1500.000	Ohm-m		
		0.000	Ohm-m		20.000	Ohm-m		
		0.000	mmho-m		3745.000	mmho-m		

Litho Density Calibration Report  
Serial: 003      Model: PRB

Master Calibration		Performed Mon May 22 11:42:40 2023				
	Background	Magnesium	Aluminum	Aluminum+Fe		
Window 1	1512.3	7465.7	2749.0	2519.6	cps	
Window 2	1398.8	6705.7	2507.3	2313.8	cps	
Window 3	1289.2	5259.5	2124.1	2009.6	cps	
Window 4	351.1	351.6	351.8	353.2	cps	
Long Space	0.0	5306.9	1108.5	915.0	cps	
Short Space	3.3	2239.9	1441.2	1212.0	cps	
Rho		1.7100	2.5900	0.0000	g/cc	
Pe		2.0000	2.7500	5.7900		
Rib Angle	: 44.3	Rib Slope	: 0.975	Density/Spine Ratio	: 0.541	
Spine Angle	: 74.3	Spine Slope	: 3.551	Spine Intercept	: -18.8	

Before Survey Verification		Performed Wed Dec 31 18:00:00 1969				
Window 1	0.0	0.0	0.0	0.0	cps	
Window 2	0.0	0.0	0.0	0.0	cps	
Window 3	0.0	0.0	0.0	0.0	cps	
Window 4	0.0	0.0	0.0	0.0	cps	
Long Space	0.0	0.0	0.0	0.0	cps	
Short Space	0.0	0.0	0.0	0.0	cps	
Measured Rho		0.0000	0.0000	0.0000	g/cc	
Measured Correction		0.0000	0.0000	0.0000	g/cc	
Measured Pe			0.0000	0.0000		

After Survey Verification		Performed Wed Dec 31 18:00:00 1969				
Window 1	0.0	0.0	0.0	0.0	cps	
Window 2	0.0	0.0	0.0	0.0	cps	
Window 3	0.0	0.0	0.0	0.0	cps	
Window 4	0.0	0.0	0.0	0.0	cps	
Long Space	0.0	0.0	0.0	0.0	cps	
Short Space	0.0	0.0	0.0	0.0	cps	
Measured Rho		0.0000	0.0000	0.0000	g/cc	
Measured Correction		0.0000	0.0000	0.0000	g/cc	
Measured Pe			0.0000	0.0000		

Compensated Neutron Calibration Report

Serial Number:  
Tool Model:

080621PMC  
NABORS

PRE-SURVEY VERIFICATION

Detector	Readings	Measured	Target
Short Space	cps		
Long Space	cps	pu	pu

POST-SURVEY VERIFICATION

Detector	Readings	Measured	Target
Short Space	cps		
Long Space	cps	pu	pu

Gamma Ray Calibration Report

Serial Number:	46001	
Tool Model:	Probe1	
Performed:	Thu Apr 20 09:55:57 2023	
Calibrator Value:	1.0	GAPI
Background Reading:	0.0	cps
Calibrator Reading:	1.0	cps
Sensitivity:	0.4300	GAPI/cps