



MICRO LOG

Company JOHN O. FARMER, INC.  
 Well SAMUELSON #9  
 Field BEMIS  
 County ELLIS  
 State Kansas

Company JOHN O. FARMER, INC.  
 Well SAMUELSON #9  
 Field BEMIS  
 County ELLIS State Kansas

Location: 1753' FNL & 283' FWL  
 API #: 15 051 27048  
 Permanent Datum Ground Level Elevation 2110  
 Log Measured From KB 8' AGL  
 Drilling Measured From KB  
 Other Services  
 DIL  
 CDNL  
 Elevation  
 K.B. 2118  
 D.F. 2116  
 G.L. 2110

Date	09/25/22
Run Number	TWO
Depth Driller	3700
Depth Logger	3700
Bottom Logged Interval	3698
Top Log Interval	3000
Casing Driller	8 5/8"@223'
Casing Logger	223
Bit Size	7 7/8"
Type Fluid in Hole	Chemical
Density / Viscosity	9.0/60
pH / Fluid Loss	10.0/6.8
Source of Sample	Pit
Rm @ Meas. Temp	.9@80degf
Rmf @ Meas. Temp	.68@80degf
Rmc @ Meas. Temp	1.08@80degf
Source of Rmf / Rmc	Calculated
Rm @ BHT	67@107degf
Time Circulation Stopped	12:30 PM
Time Logger on Bottom	2:30 PM
Maximum Recorded Temperature	107degf
Equipment Number	T-605
Location	Hays, KS.
Recorded By	GUS PFANENSTIEL
Witnessed By	AUSTIN KLAUS

<<< Fold Here >>>

All interpretations are opinions based on inferences from electrical or other measurements and we cannot and do not guarantee the accuracy or correctness of any interpretation, and we shall not, except in the case of gross or willful negligence on our part, be liable or responsible for any loss, costs, damages, or expenses incurred or sustained by anyone resulting from any interpretation made by any of our officers, agents or employees. These interpretations are also subject to our general terms and conditions set out in our current Price Schedule.

Comments

NORTH OF HAYS TO SEVERIN RD. EAST TO CODELL RD., NORTH 3.8 MILES TO FLAGGED CATTLEGUARD, .9 MILE TO FLAGGED LEASE RD. SOUTH ON RD .7 MILE TO ANOTHER LEASE RD EAST .3 THEN SOUTH .1, WEST AND SOUTH .3 MILES

Thanks for using Gemini Wireline LLC  
 785-625-1182

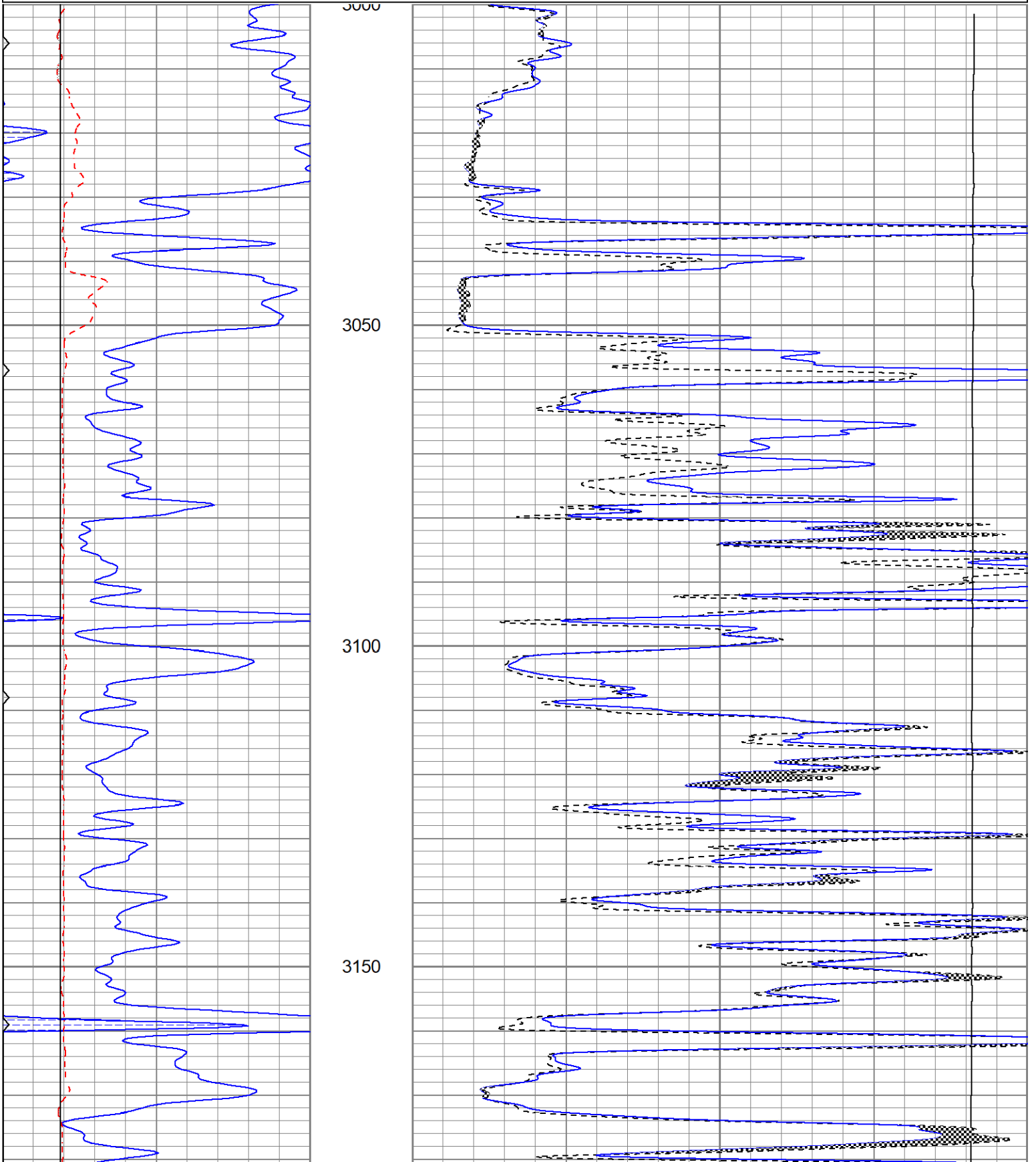


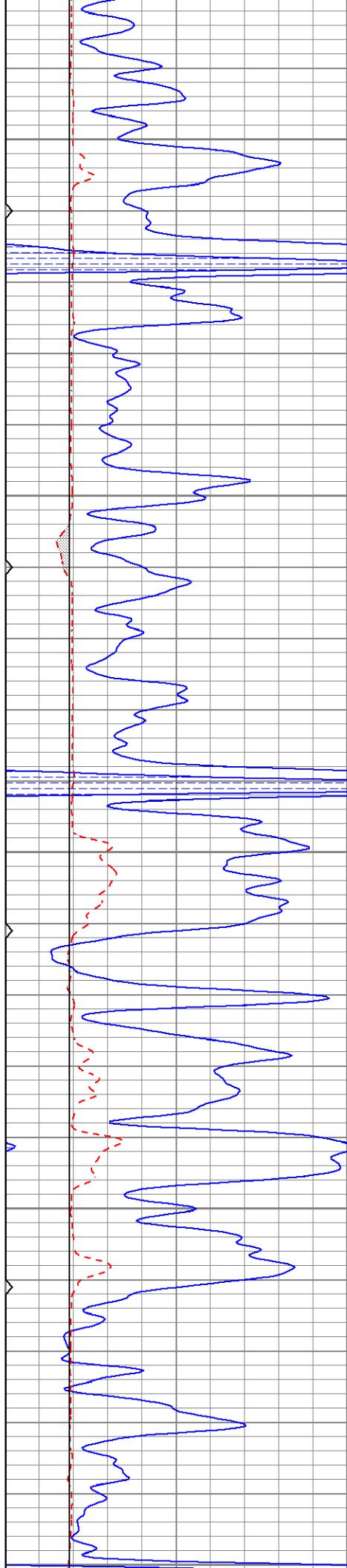
MAIN PASS

Database File jofsamuelson#9oh.db  
 Dataset Pathname pass5.1  
 Presentation Format kml  
 Dataset Creation Sun Sep 25 16:00:27 2022  
 Charted by Depth in Feet scaled 1:240

0	GR (GAPI)	150
6	MCAL (in)	16
6	BOREID (in)	16
0	MINMK	50

0	MN 2" (Ohm-m)	20
0	MI 1" (Ohm-m)	20
10000	LTEN (lb)	0





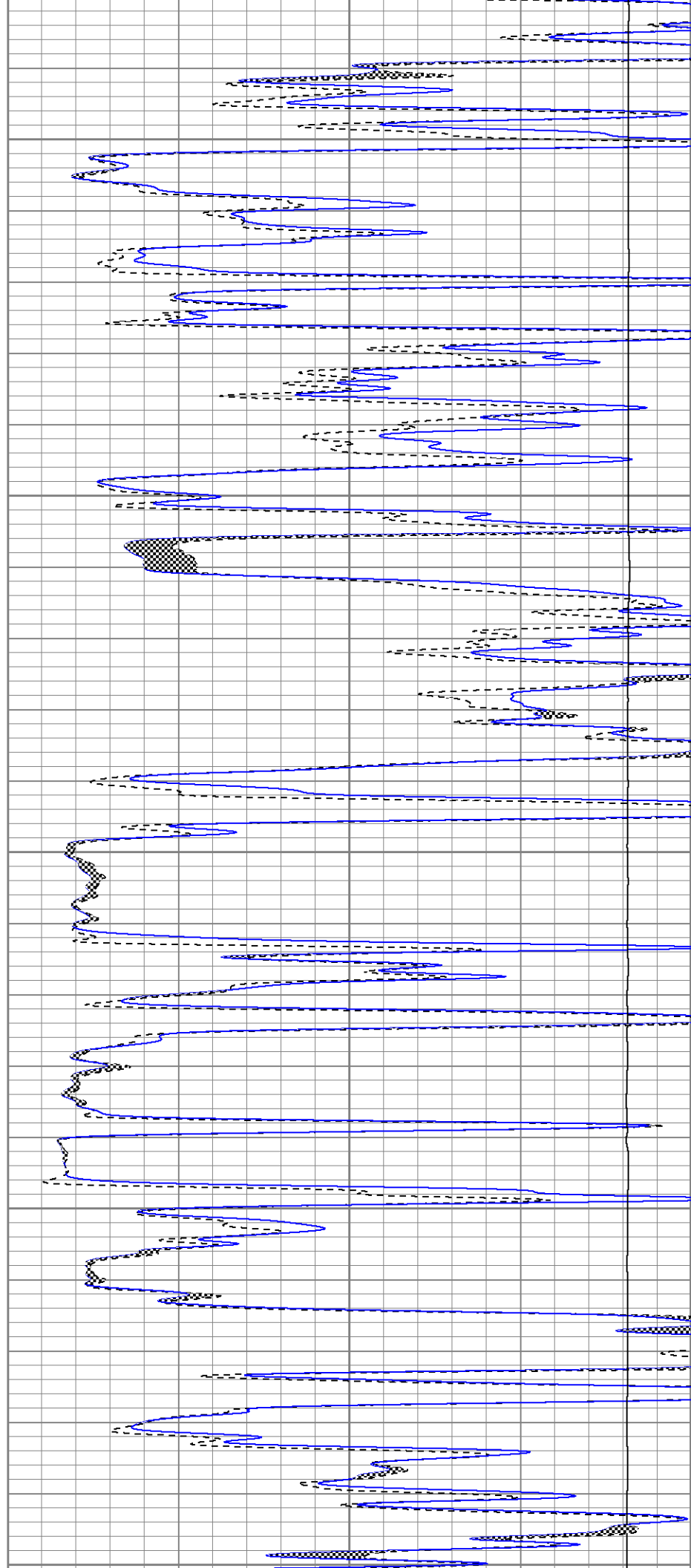
3200

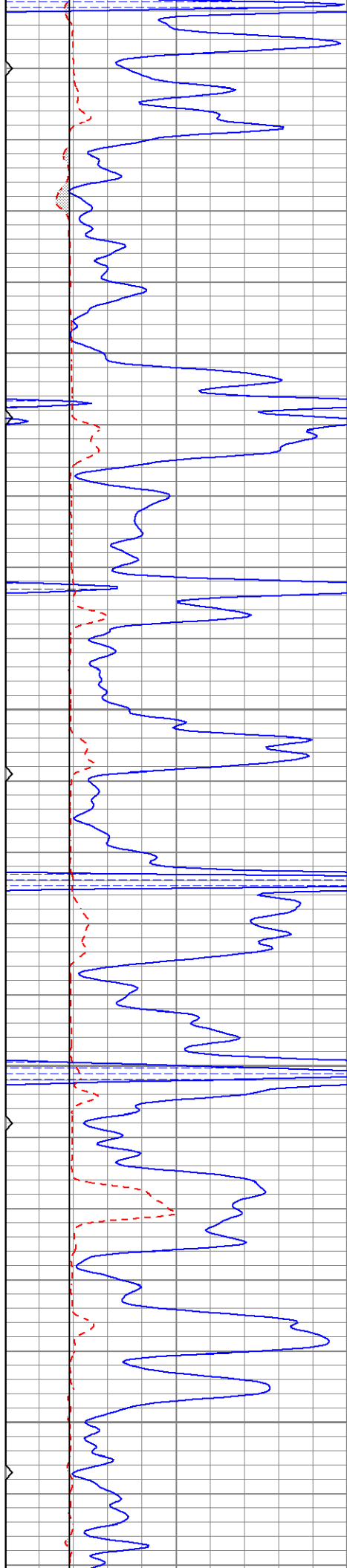
3250

3300

3350

3400



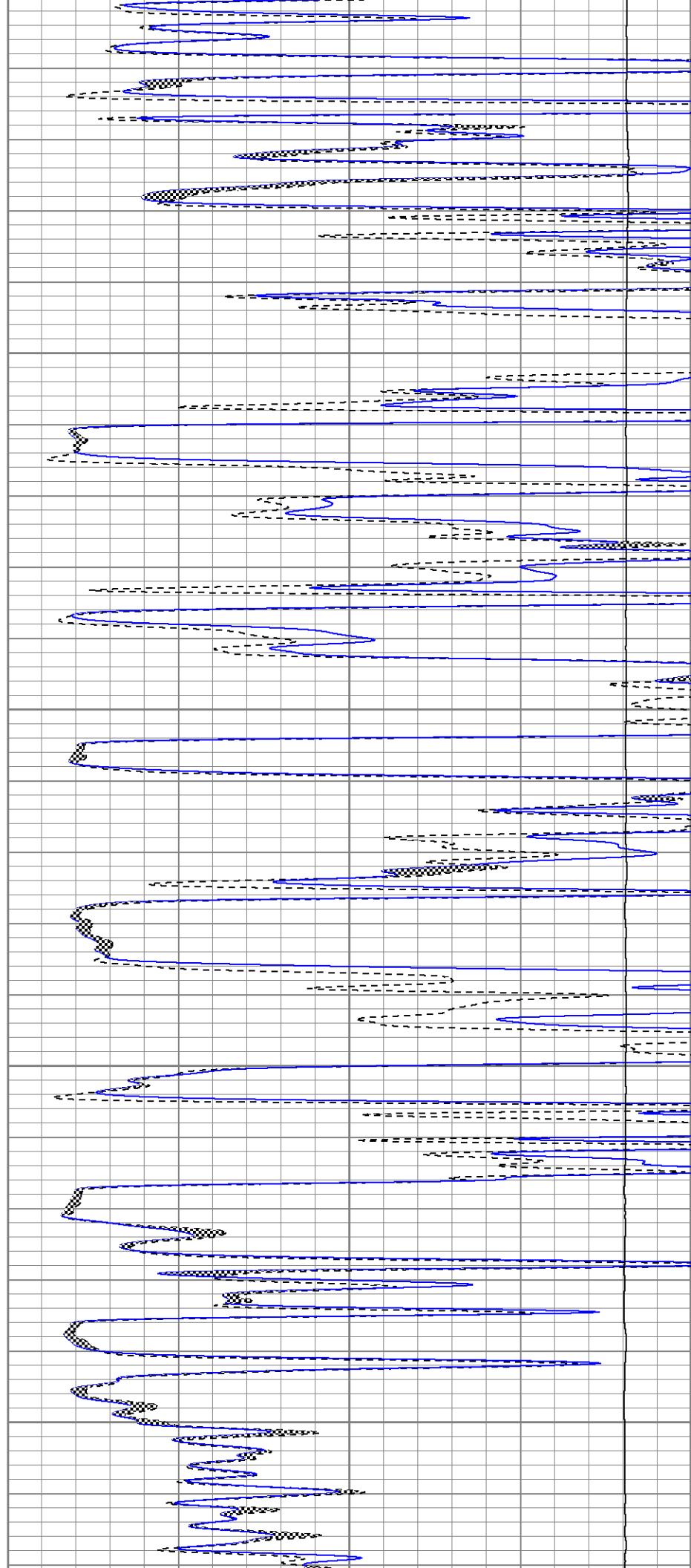


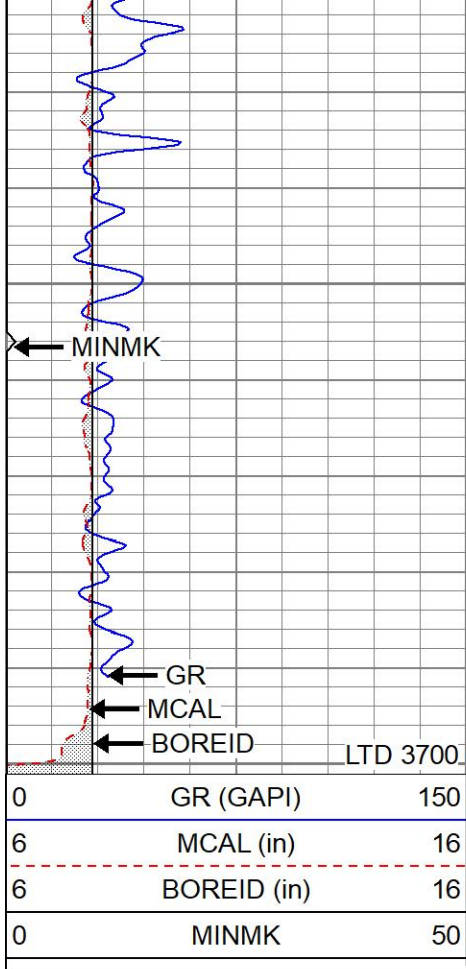
3450

3500

3550

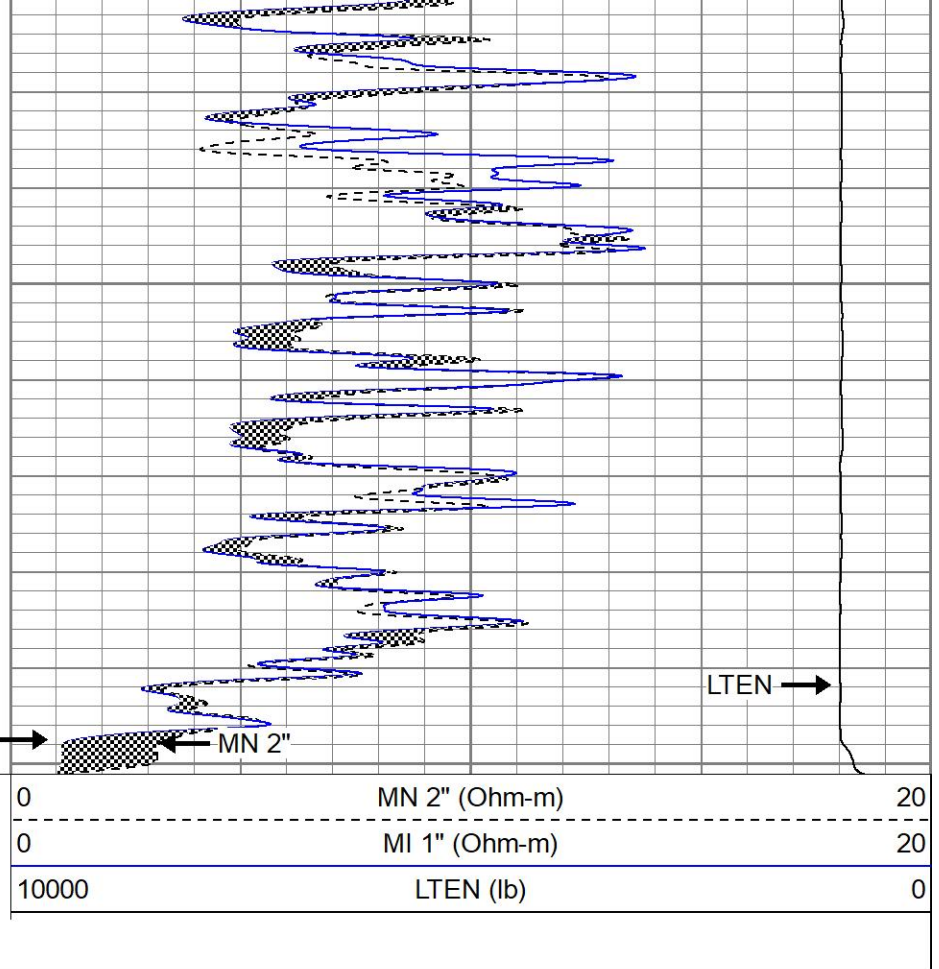
3600





3650

MI 1"  
3700



LTEN →

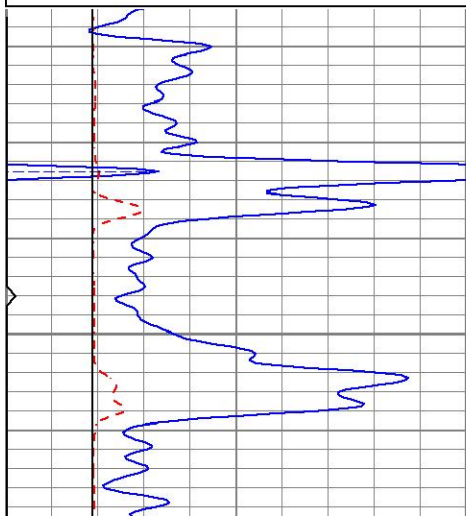


# REPEAT SECTION

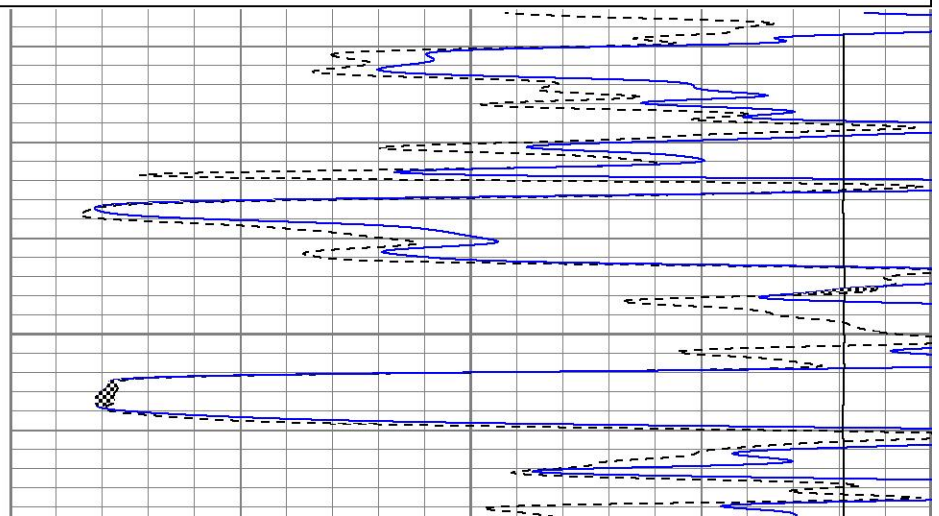
Database File jofsamuelson#9oh.db  
 Dataset Pathname pass4.1  
 Presentation Format kml  
 Dataset Creation Sun Sep 25 16:02:17 2022  
 Charted by Depth in Feet scaled 1:240

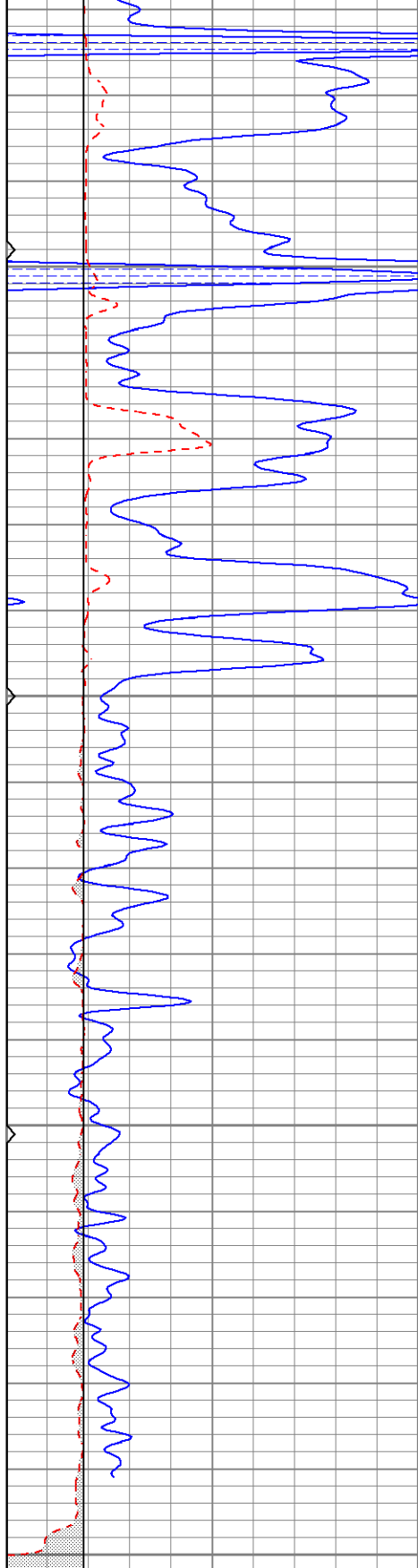
0	GR (GAPI)	150
6	MCAL (in)	16
6	BOREID (in)	16
0	MINMK	50

0	MN 2" (Ohm-m)	20
0	MI 1" (Ohm-m)	20
10000	LTEN (lb)	0



3500





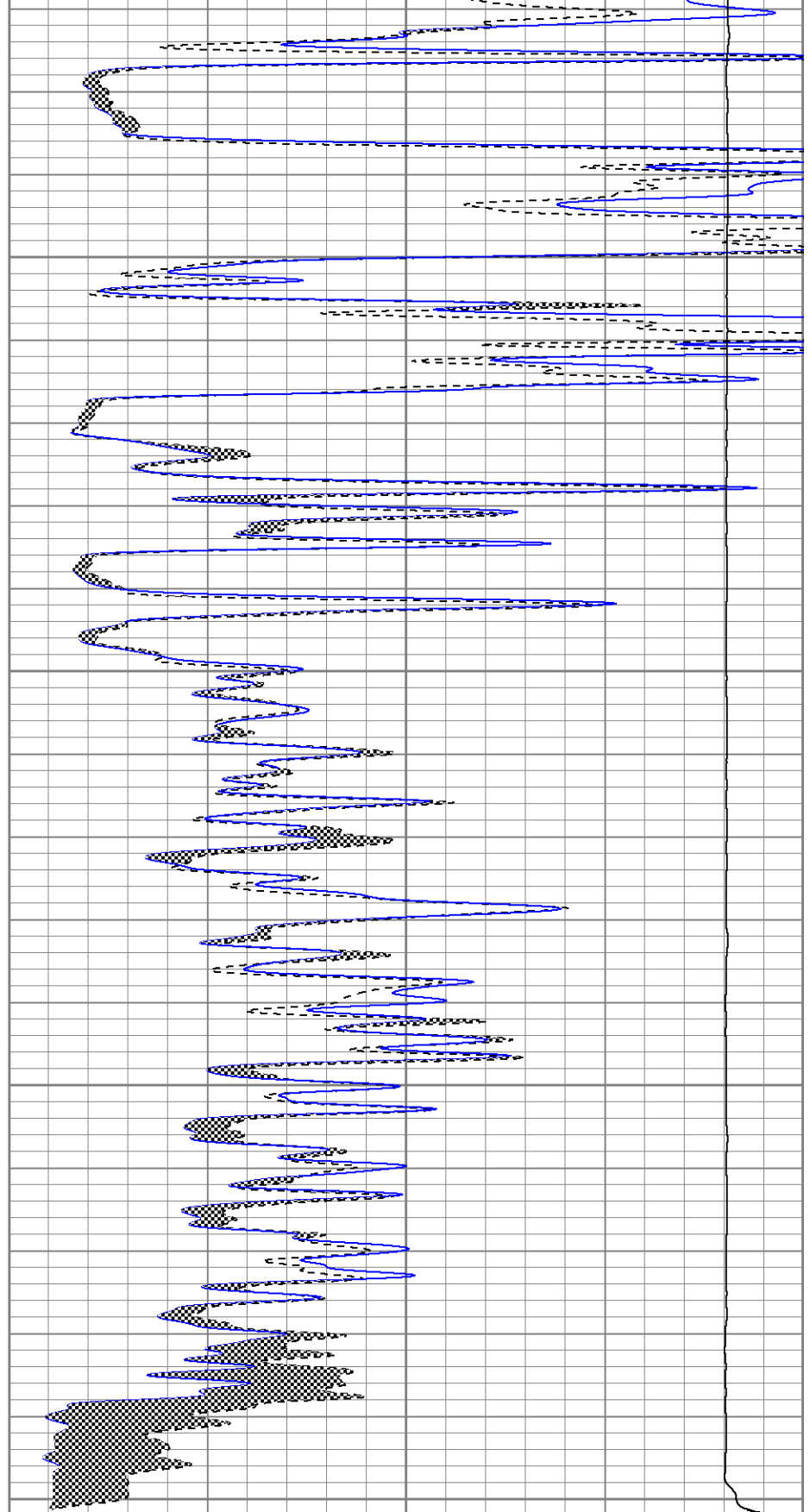
3550

3600

3650

3700

0	GR (GAPI)	150
6	MCAL (in)	16
6	BOREID (in)	16
0	MINMK	50



0	MN 2" (Ohm-m)	20
0	MI 1" (Ohm-m)	20
10000	LTEN (lb)	0

Calibration Report

Database File jofsamuelson#9oh.db  
 Dataset Pathname pass4.1

Microlog Calibration Report

Serial-Model: 1600-Pengo  
 Performed: Sun Sep 25 15:33:21 2022

	Readings			References			Results	
	Zero	Cal		Zero	Cal		m	b
Normal	0.0035	0.4846	V	0.0000	10.0000	Ohm-m	20.7878	1.0733
Inverse	0.0021	0.6351	V	0.0000	10.0000	Ohm-m	12.7994	1.0336
Caliper	3.2319	6.4483	V	8.0000	15.0000	in	2.1364	1.2662

Gamma Ray Calibration Report

Serial Number: 2000  
 Tool Model: P2000  
 Performed: Sun May 6 10:04:13 2018

Calibrator Value: 1.0 GAPI

Background Reading: 0.0 cps  
 Calibrator Reading: 1.0 cps

Sensitivity: 0.8200 GAPI/cps