

SONIC  
LOG



Company INDIAN OIL COMPANY, INC.  
Well BANKS NORTH #3  
Field AMBER CREEK  
County BARBER State KANSAS

Location: API #: 15-007-24440-0000  
1512' FNL & 2180' FEL  
NE - NW - SW - SE  
Permanent Datum GROUND LEVEL Elevation 1673  
Log Measured From KELLY BUSHING 12' A.G.L.  
Drilling Measured From KELLY BUSHING  
SEC 36 TWP 30S RGE 12W  
Other Services  
CDL/CNL/PE  
DIL/MEI/FF  
Elevation  
K.B. 1681  
D.F. 1679  
G.L. 1673

Date	9/13/22	
Run Number	TWO	
Depth Driller	4810	
Depth Logger	4808	
Bottom Logged Interval	4800	
Top Log Interval	2500	
Casing Driller	8 5/8"@305'	
Casing Logger	305	
Bit Size	7 7/8"	
Type Fluid in Hole	CHEMICAL MUD	CHLORIDES 6,000 PPM
Density / Viscosity	9.3/44	
pH / Fluid Loss	10.5/9.6	
Source of Sample	FLOWLINE	
Rm @ Meas. Temp	.750@82F	
Rmf @ Meas. Temp	.563@82F	
Rmc @ Meas. Temp	.900@82F	
Source of Rmf / Rmc	MEASUREMENT	
Rm @ BHT	.500@123F	
Time Circulation Stopped	5 HOURS	
Time Logger on Bottom	2.45 P.M.	
Maximum Recorded Temperature	123F	
Equipment Number	922339	
Location	HAYS, KANSAS	
Recorded By	JEFF LUEBBERS	
Witnessed By	AARON YOUNG	ANTHONY FARRAR

<<< Fold Here >>>

All interpretations are opinions based on inferences from electrical or other measurements and we cannot and do not guarantee the accuracy or correctness of any interpretation, and we shall not, except in the case of gross or willful negligence on our part, be liable or responsible for any loss, costs, damages, or expenses incurred or sustained by anyone resulting from any interpretation made by any of our officers, agents or employees. These interpretations are also subject to our general terms and conditions set out in our current Price Schedule.

15-007-24440-0000 Comments

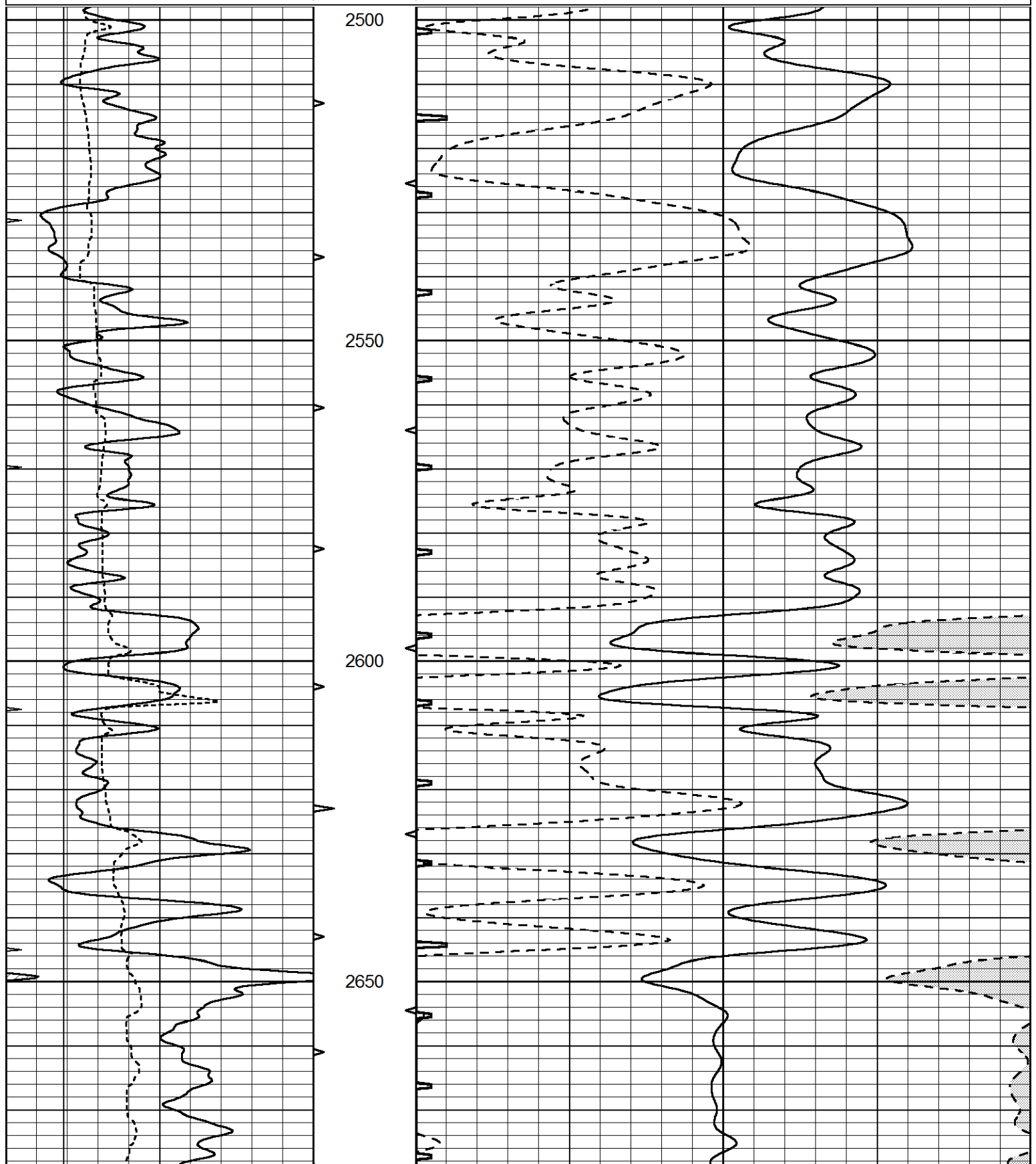
THANK YOU FOR USING ELI WIRELINE HAYS, KANSAS (785) 628-6395  
DIRECTIONS  
SAWYER, KS., S. ON HWY 281 TO "RESORT RD."(99 SPRINGS SIGN), 1 1/2 W., TO GREEN GATES,  
S. INTO, FOLLOW LEASE RD.

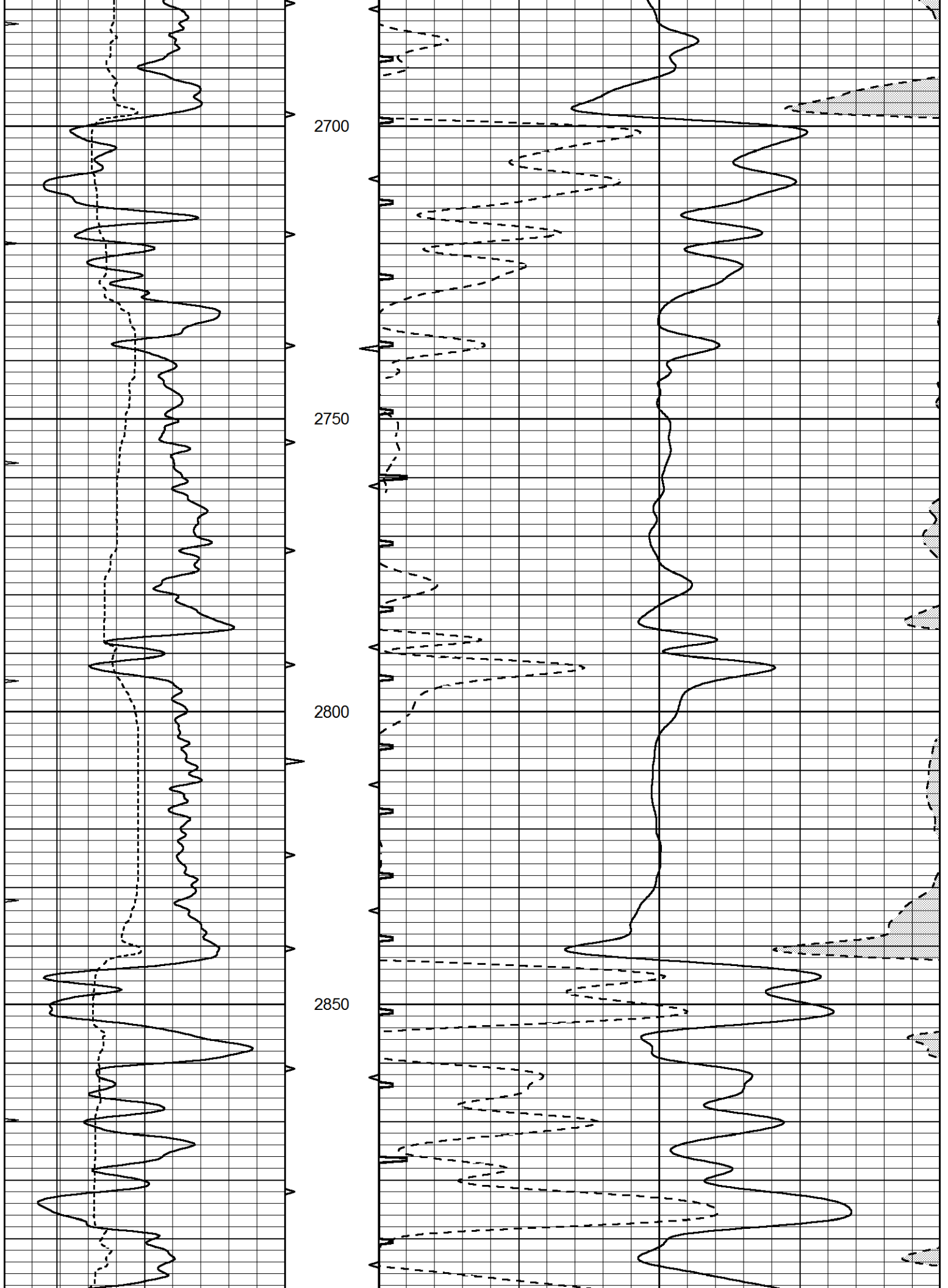


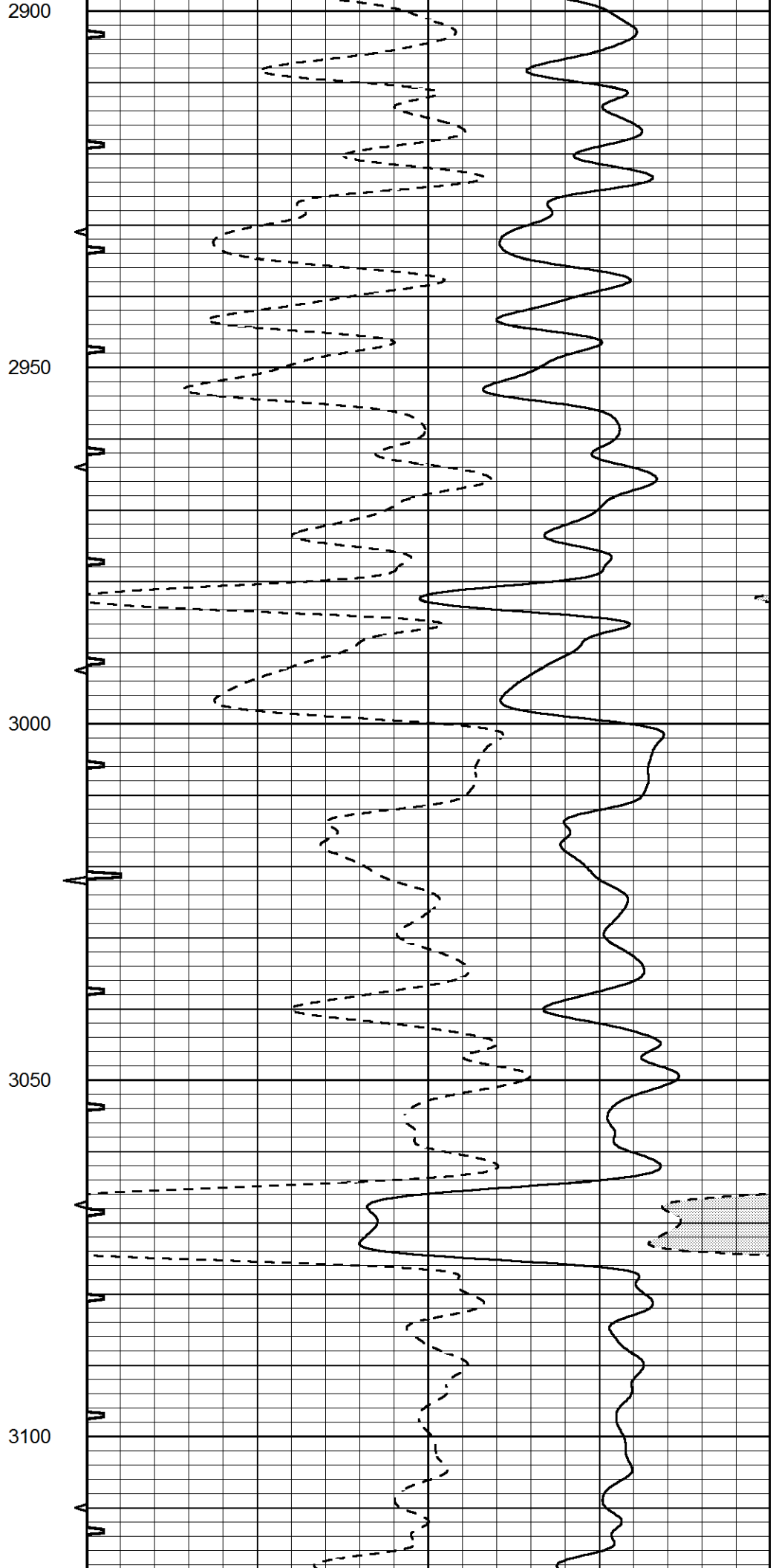
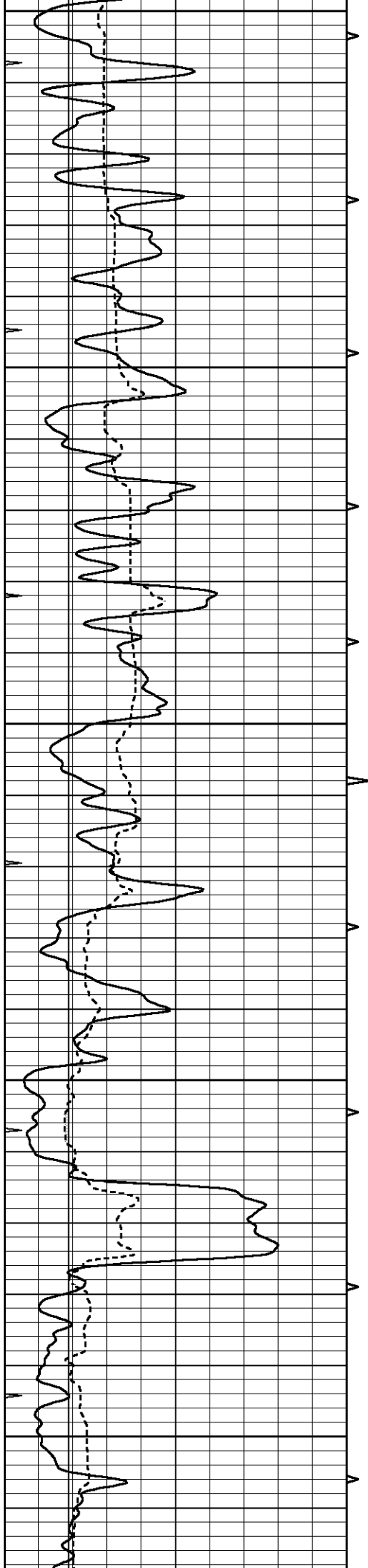
MAIN SECTION

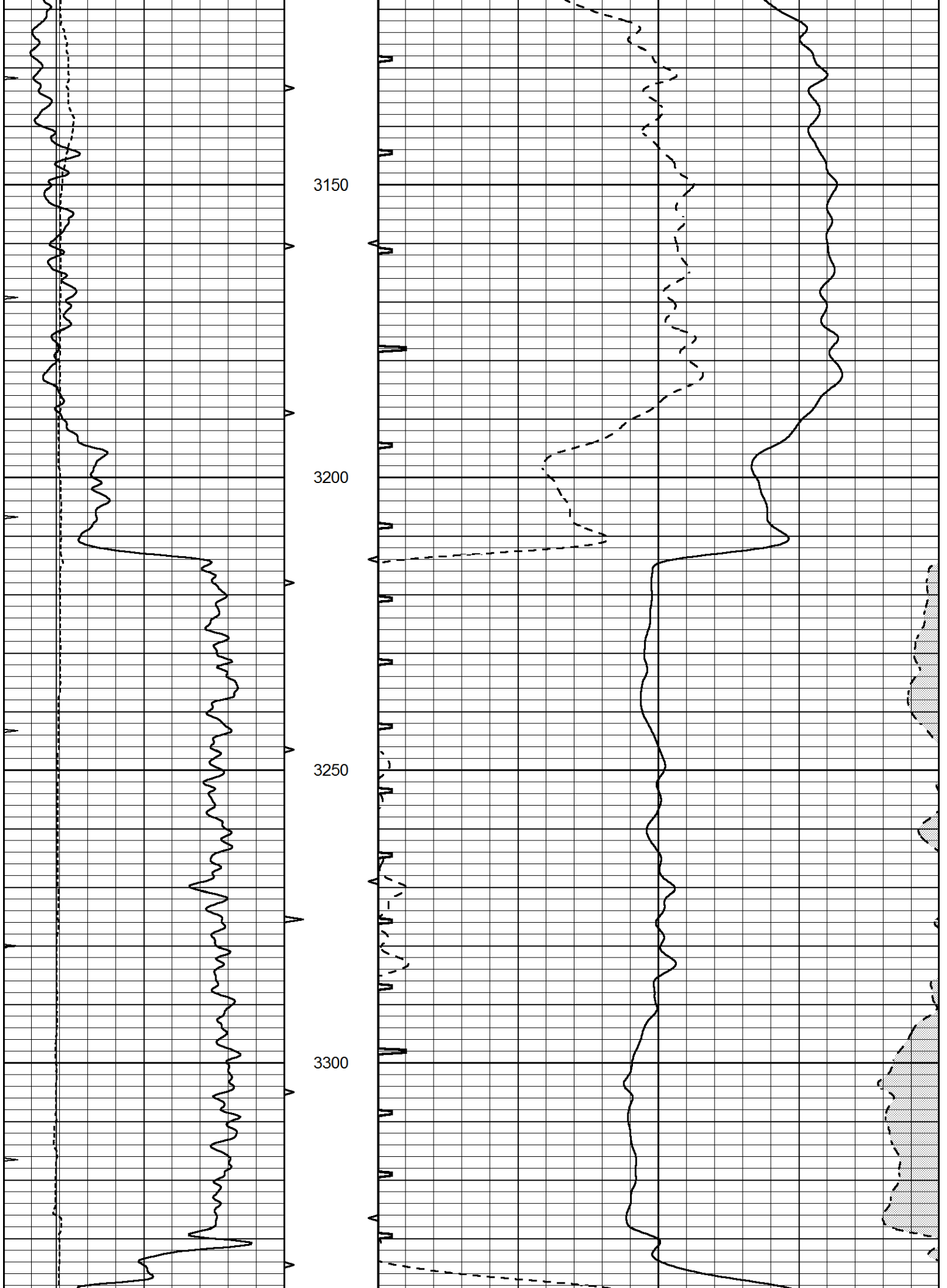
Database File 6925pe.db  
 Dataset Pathname pass6.4  
 Presentation Format slt  
 Dataset Creation Tue Sep 13 16:02:34 2022  
 Charted by Depth in Feet scaled 1:240

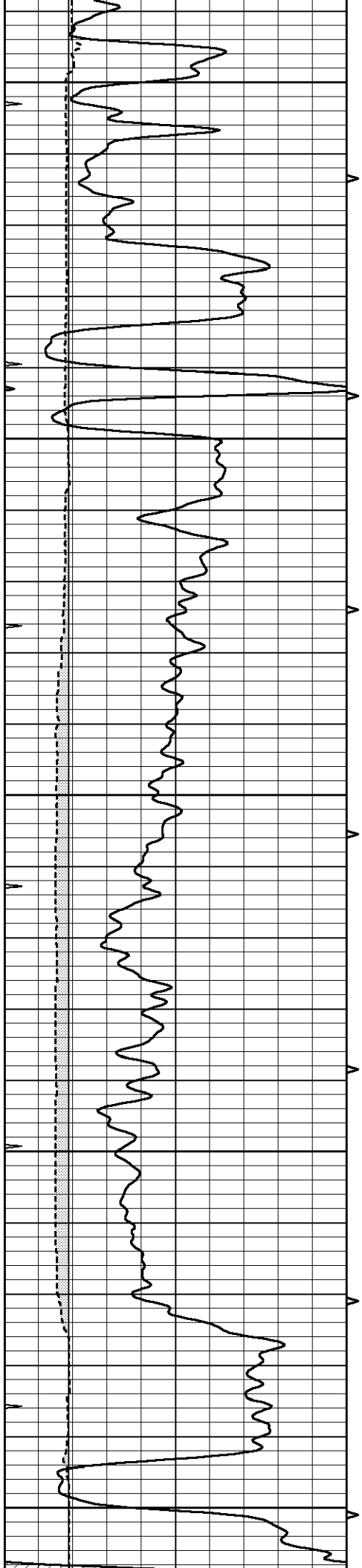
0	GAMMA RAY (GAPI)	150	ABHV	140	DELTA TIME (usec/ft)	40
6	CALIPER (in)	16	10 (ft3) 0	30	SONIC POROSITY (pu)	-10
0	MINMK	20	TBHV	0	ITT (msec)	20
			0 (ft3) 10			











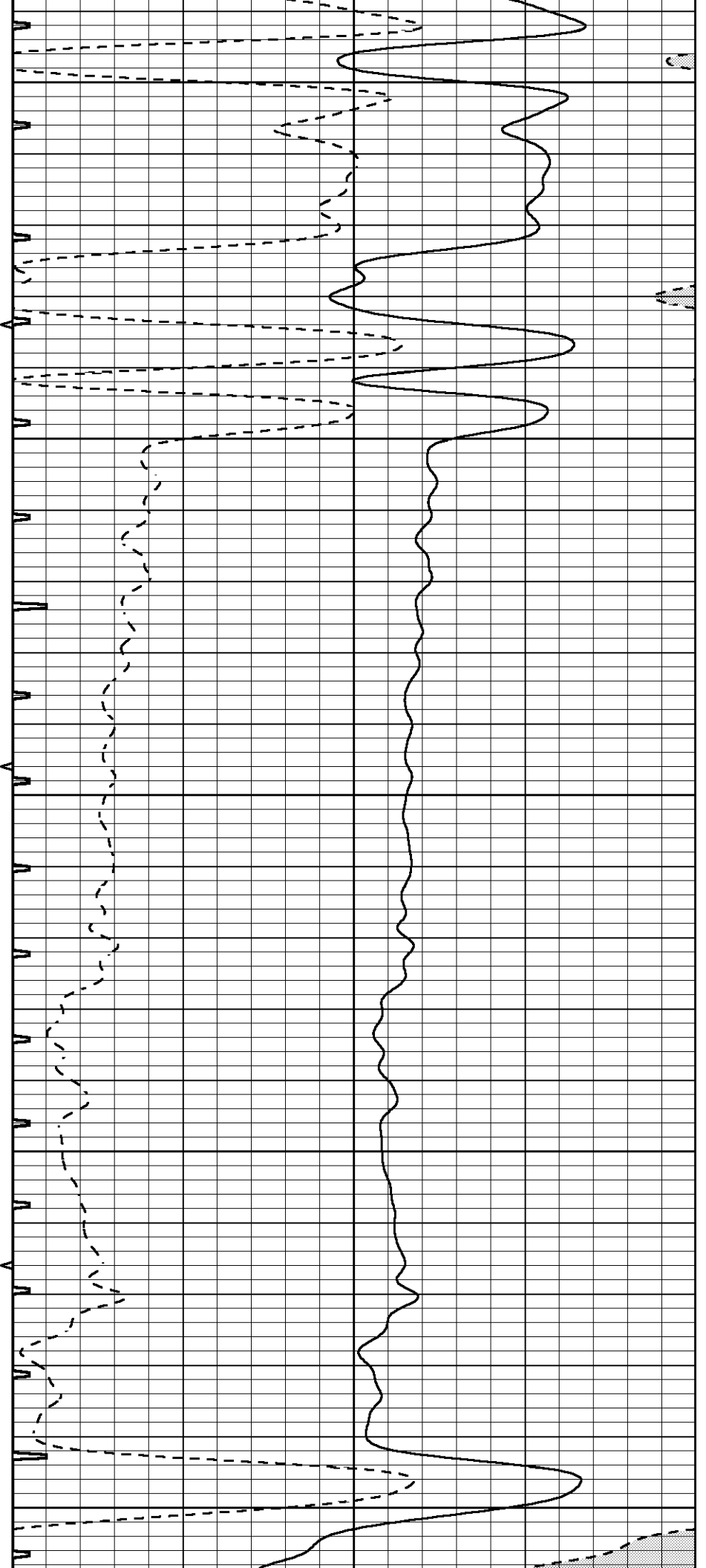
3350

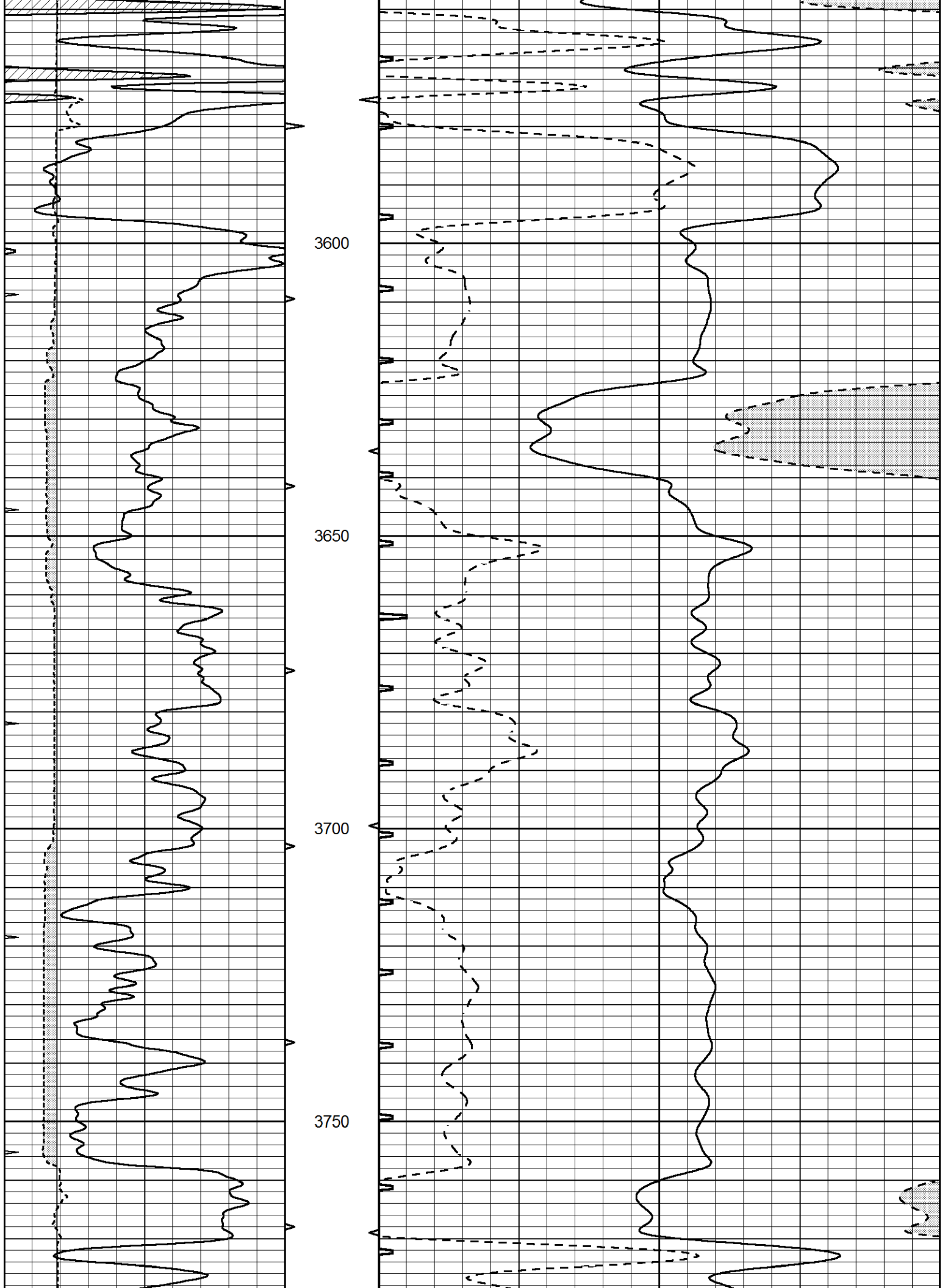
3400

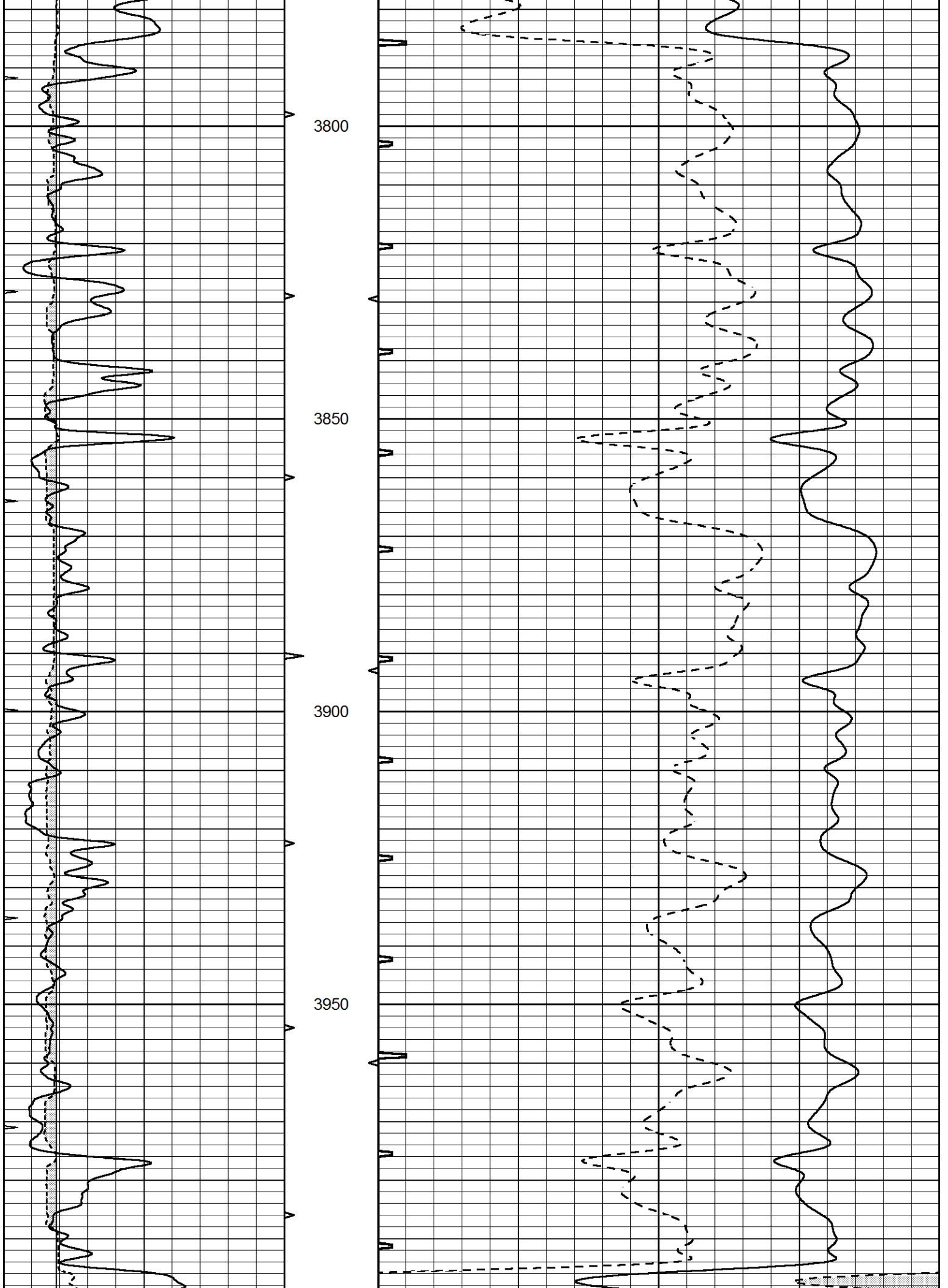
3450

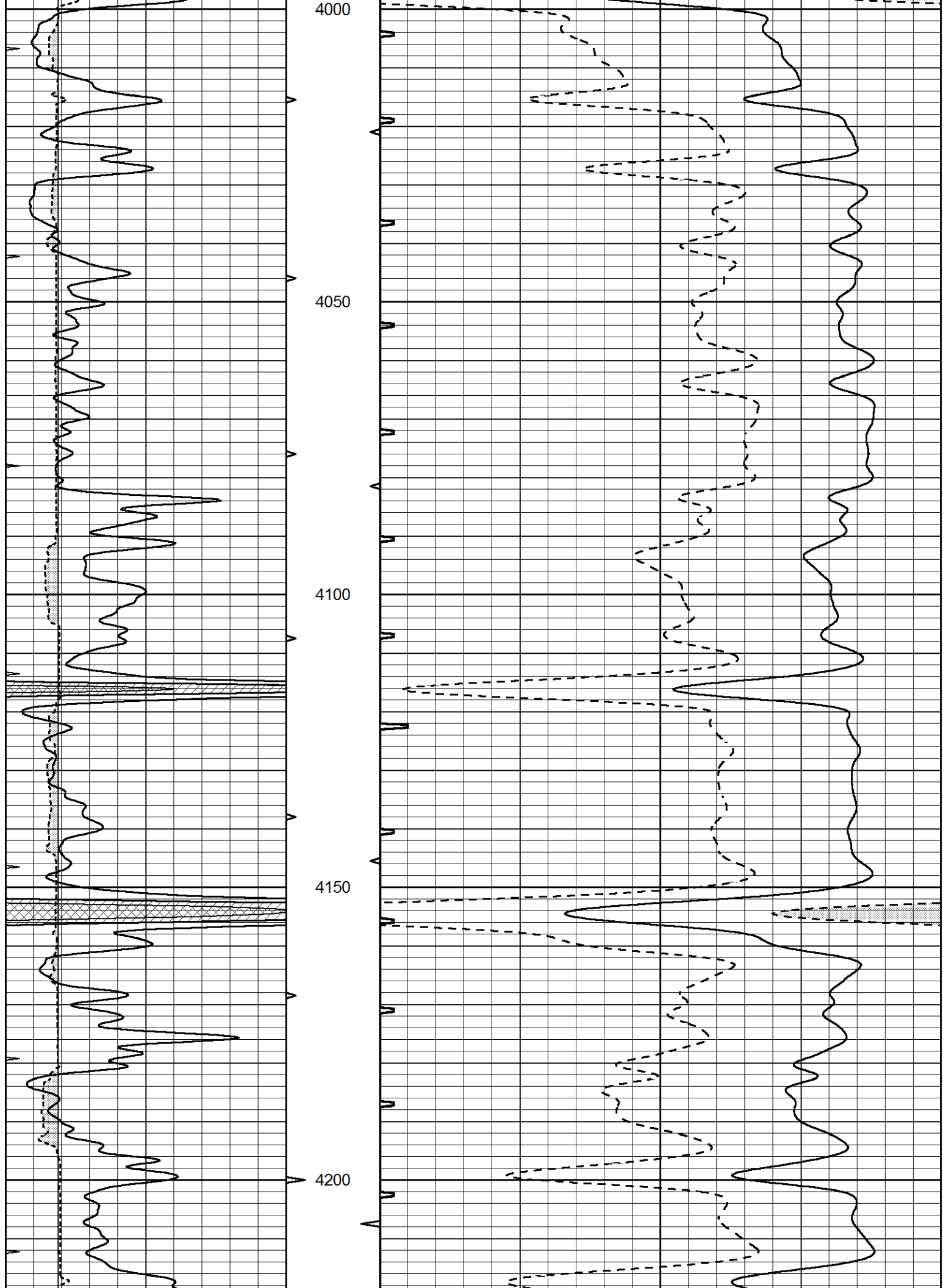
3500

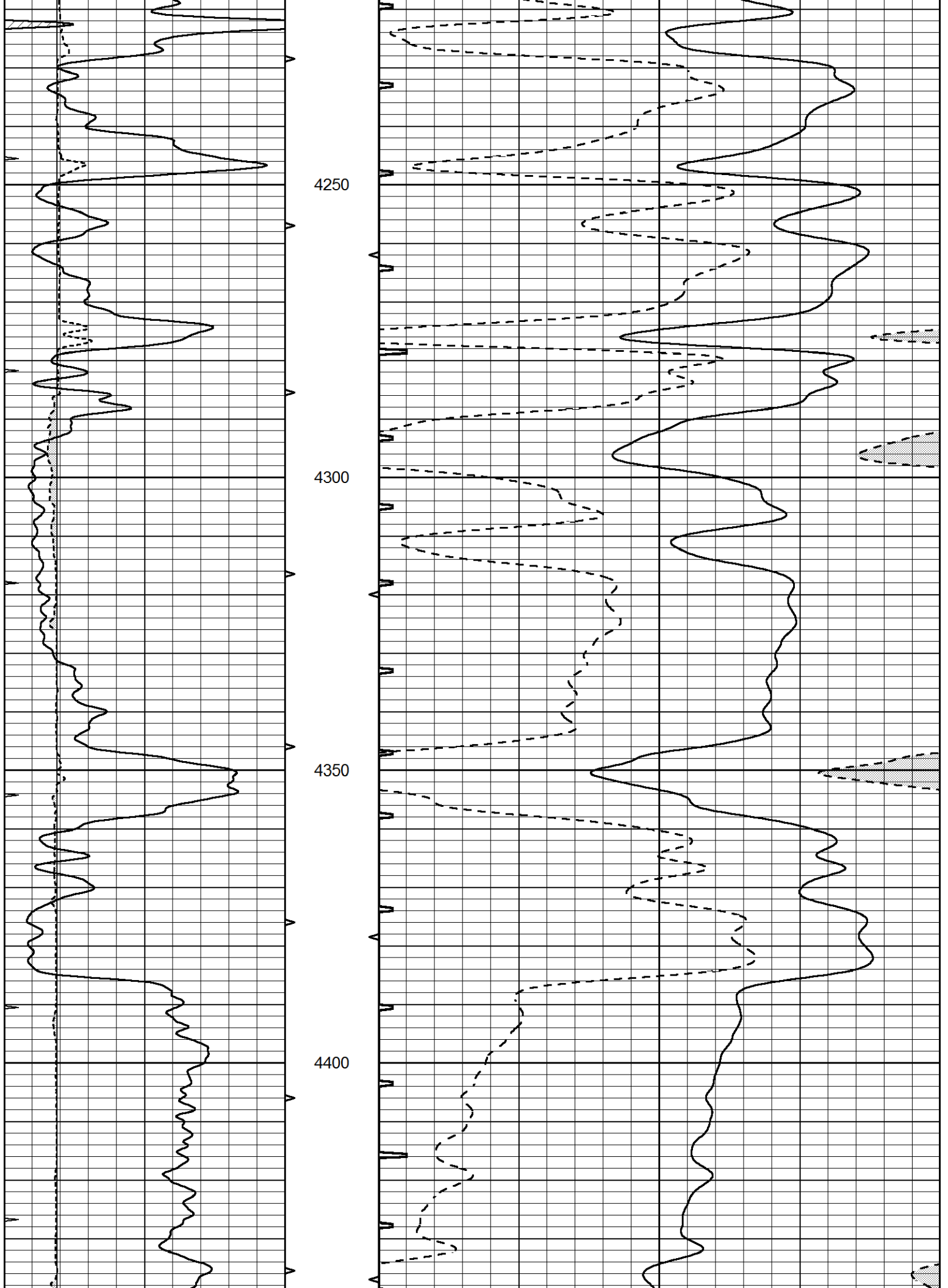
3550

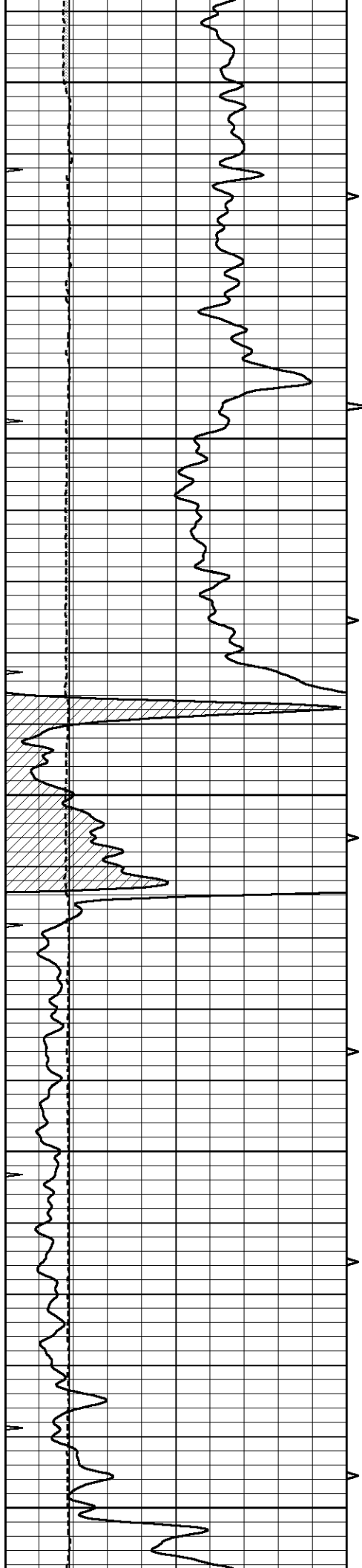












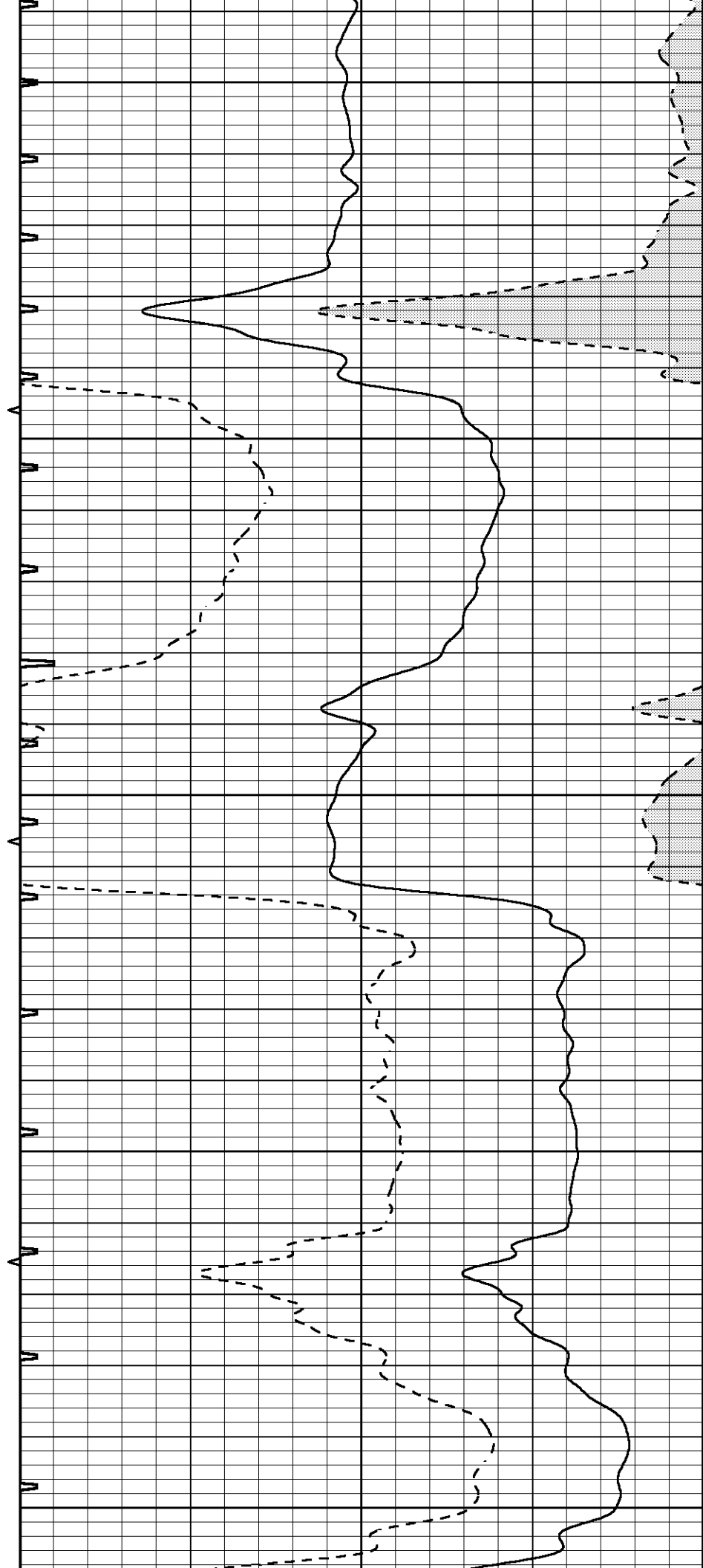
4450

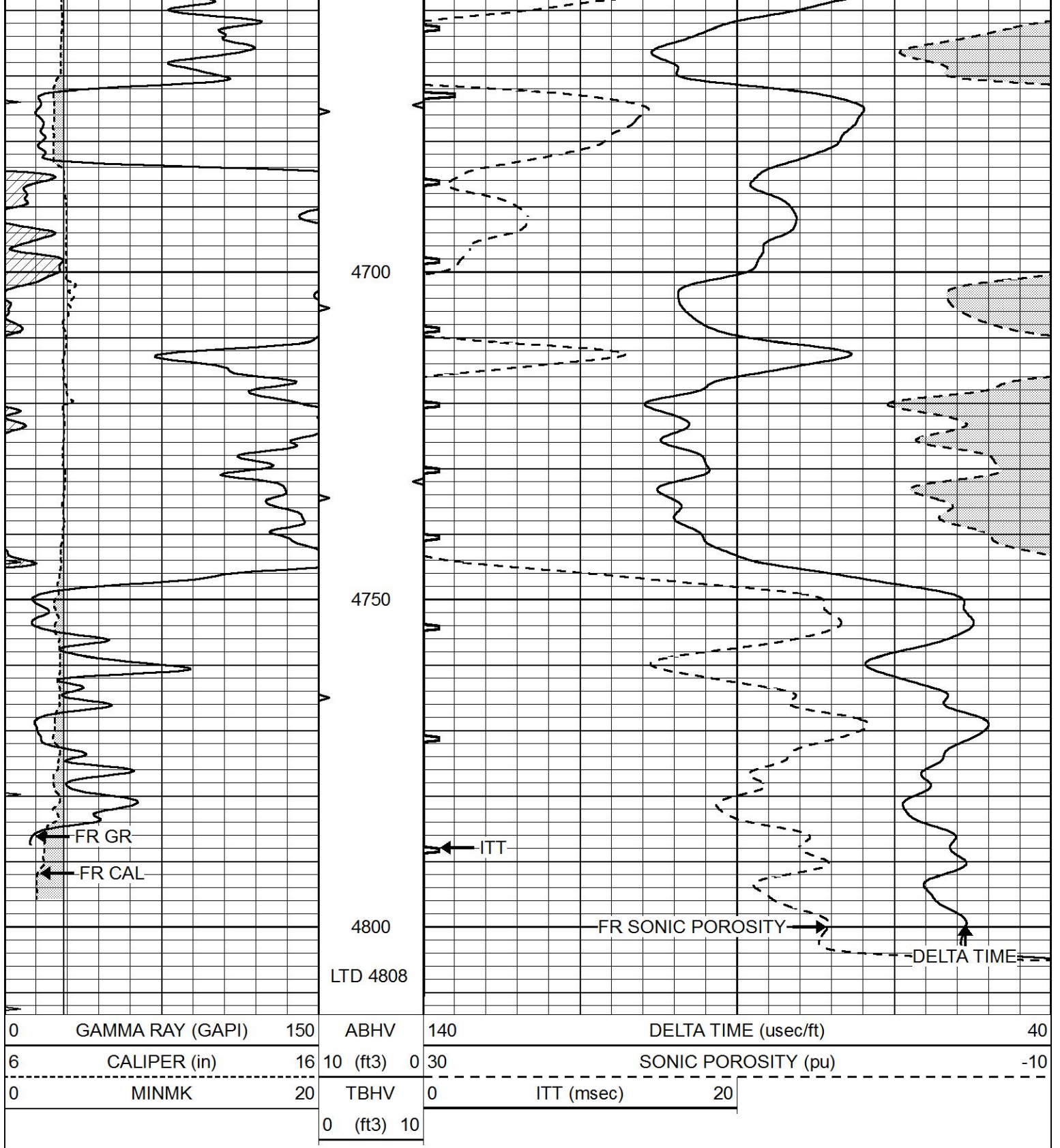
4500

4550

4600

4650

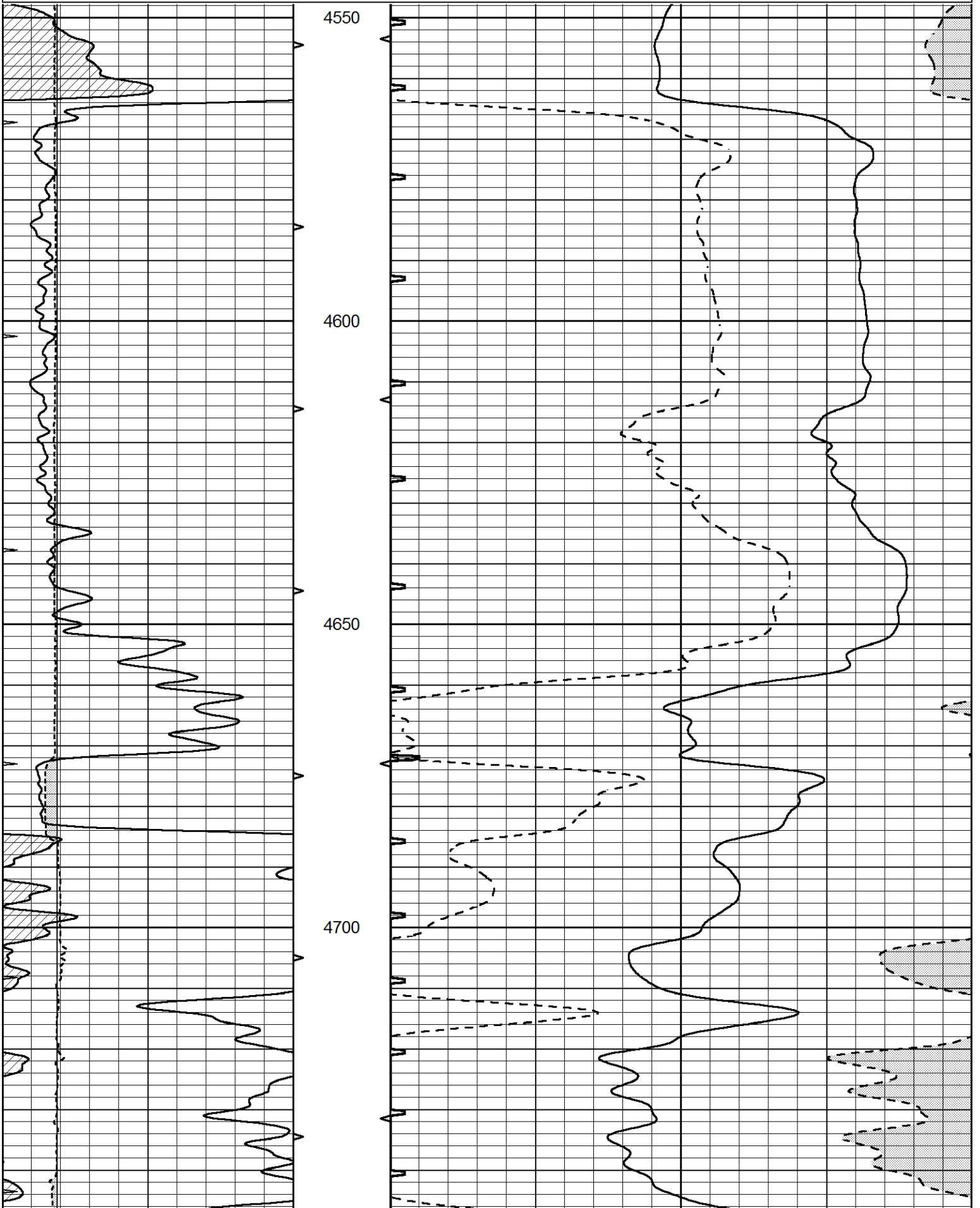


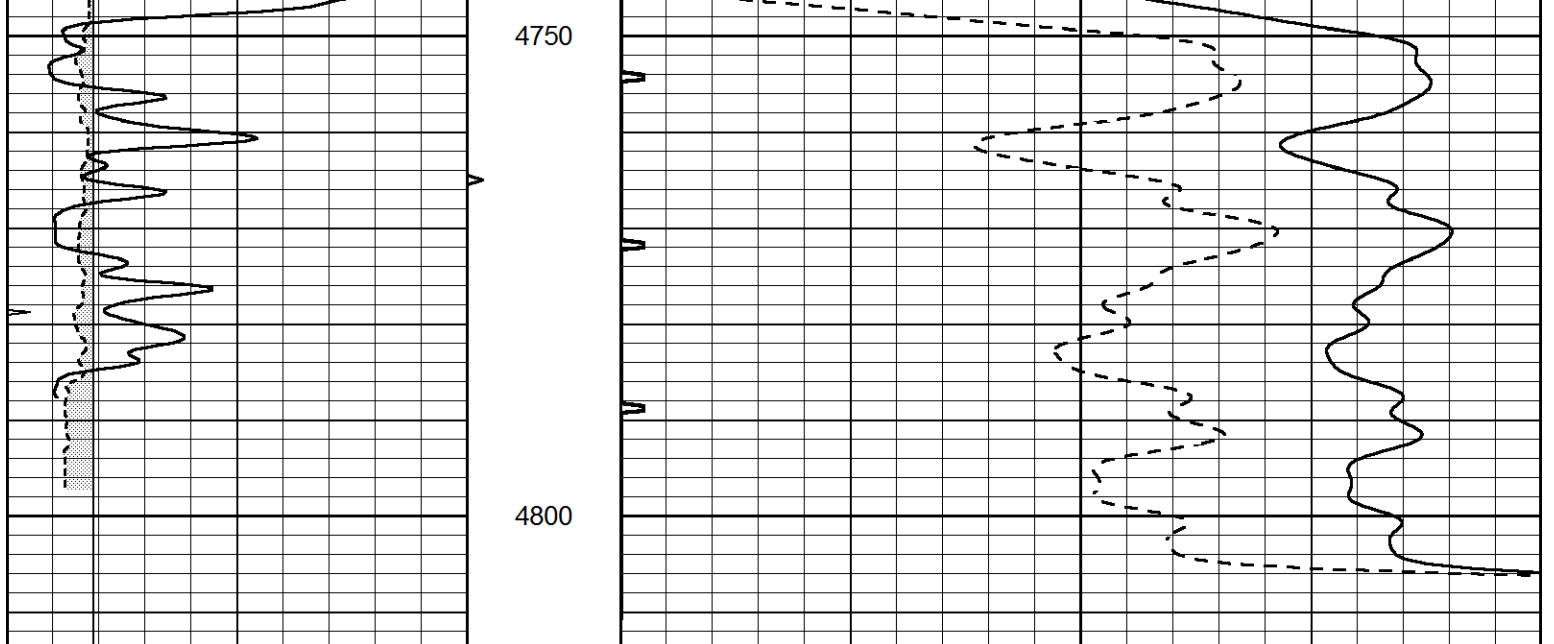


# REPEAT SECTION

Database File 6925pe.db  
 Dataset Pathname pass5.1  
 Presentation Format slt  
 Dataset Creation Tue Sep 13 16:07:03 2022  
 Charted by Depth in Feet scaled 1:240

0	GAMMA RAY (GAPI)	150	ABHV	140	DELTA TIME (usec/ft)	40	
6	CALIPER (in)	16	10 (ft3)	0	30	SONIC POROSITY (pu)	-10
0	MINMK	20	TBHV	0	ITT (msec)	20	
			0 (ft3)	10			





0	GAMMA RAY (GAPI)	150	ABHV	140	DELTA TIME (usec/ft)	40
6	CALIPER (in)	16	10 (ft3) 0	30	SONIC POROSITY (pu)	-10
0	MINMK	20	TBHV	0	ITT (msec)	20
			0 (ft3) 10			