



**COMPENSATED
DENSITY / NEUTRON
PE LOG**

Company	INDIAN OIL COMPANY, INC.	Company	INDIAN OIL COMPANY, INC.
Well	BANKS NORTH #3	Well	BANKS NORTH #3
Field	AMBER CREEK	Field	AMBER CREEK
County	BARBER	County	BARBER
State	KANSAS	State	KANSAS
Location:	API #: 15-007-24440-0000 1512' FNL & 2180' FEL NE - NW - SW - SE	Other Services	DILMEL SON/FF
Permanent Datum	GROUND LEVEL	Elevation	1673
Log Measured From	KELLY BUSHING 12' A.G.L.	K.B.	1681
Drilling Measured From	KELLY BUSHING	D.F.	1679
		G.L.	1673
Date	9/13/22		
Run Number	ONE		
Depth Driller	4810		
Depth Logger	4808		
Bottom Logged Interval	4784		
Top Log Interval	2500		
Casing Driller	8 5/8"@305'		
Casing Logger	305		
Bit Size	7 7/8"		
Type Fluid in Hole	CHEMICAL MUD	CHLORIDES	6,000 PPM
Density / Viscosity	9.3/44		
pH / Fluid Loss	10.5/9.6		
Source of Sample	FLOWLINE		
Rm @ Meas. Temp	.750@82F		
Rmf @ Meas. Temp	.563@82F		
Rmc @ Meas. Temp	.900@82F		
Source of Rmf / Rmc	MEASUREMENT		
Rm @ BHT	.500@123F		
Time Circulation Stopped	3 HOURS		
Time Logger on Bottom	12:15 P.M.		
Maximum Recorded Temperature	123F		
Equipment Number	922339		
Location	HAYS, KANSAS		
Recorded By	JEFF LUEBBERS		
Witnessed By	AARON YOUNG	ANTHONY FARRAR	

<<< Fold Here >>>

All interpretations are opinions based on inferences from electrical or other measurements and we cannot and do not guarantee the accuracy or correctness of any interpretation, and we shall not, except in the case of gross or willful negligence on our part, be liable or responsible for any loss, costs, damages, or expenses incurred or sustained by anyone resulting from any interpretation made by any of our officers, agents or employees. These interpretations are also subject to our general terms and conditions set out in our current Price Schedule.

15-007-24440-0000

Comments

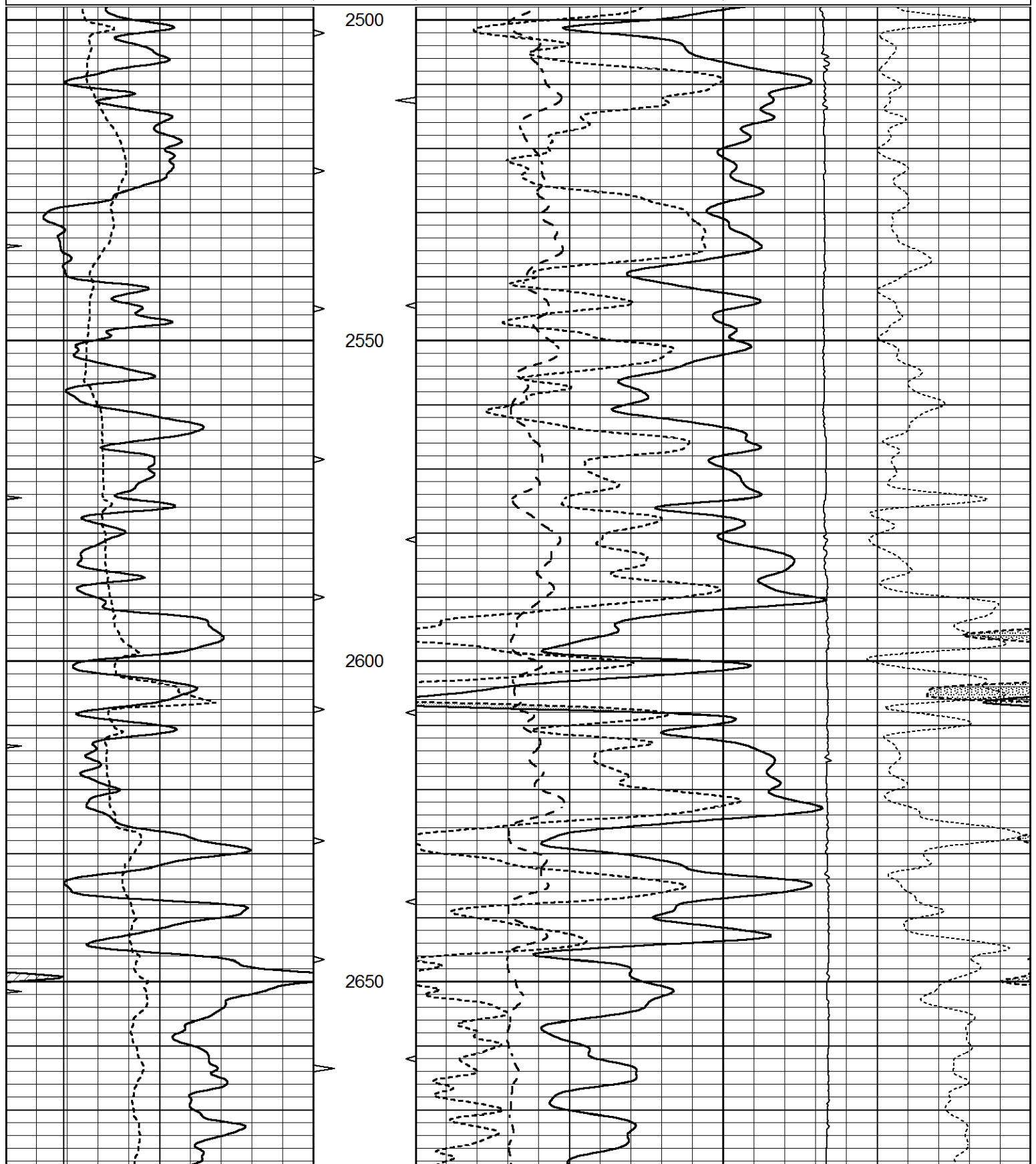
THANK YOU FOR USING ELI WIRELINE HAYS, KANSAS (785) 628-6395
DIRECTIONS
SAWYER, KS., S. ON HWY 281 TO "RESORT RD."(99 SPRINGS SIGN), 1 1/2 W., TO GREEN GATES,
S. INTO, FOLLOW LEASE RD.

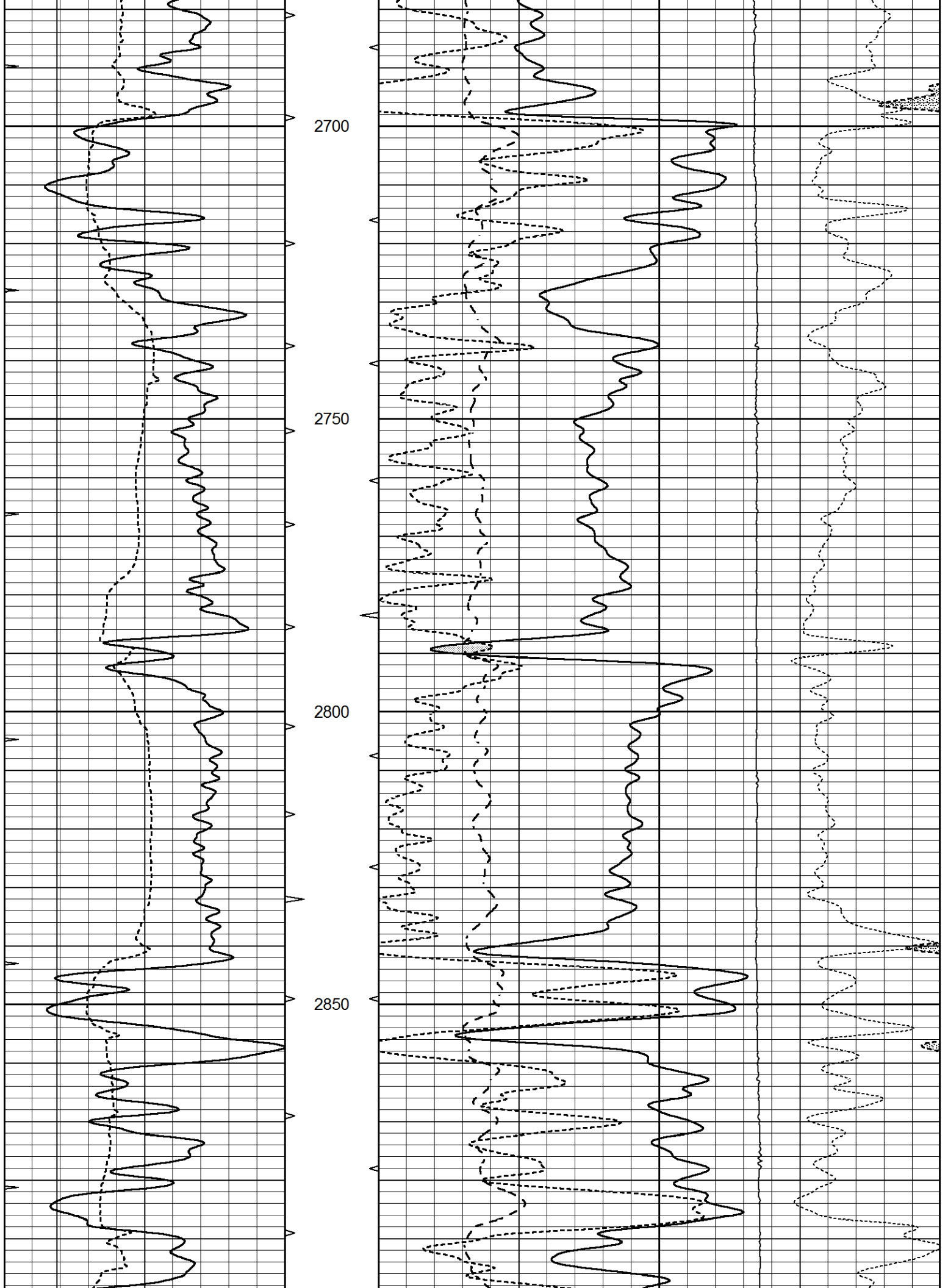


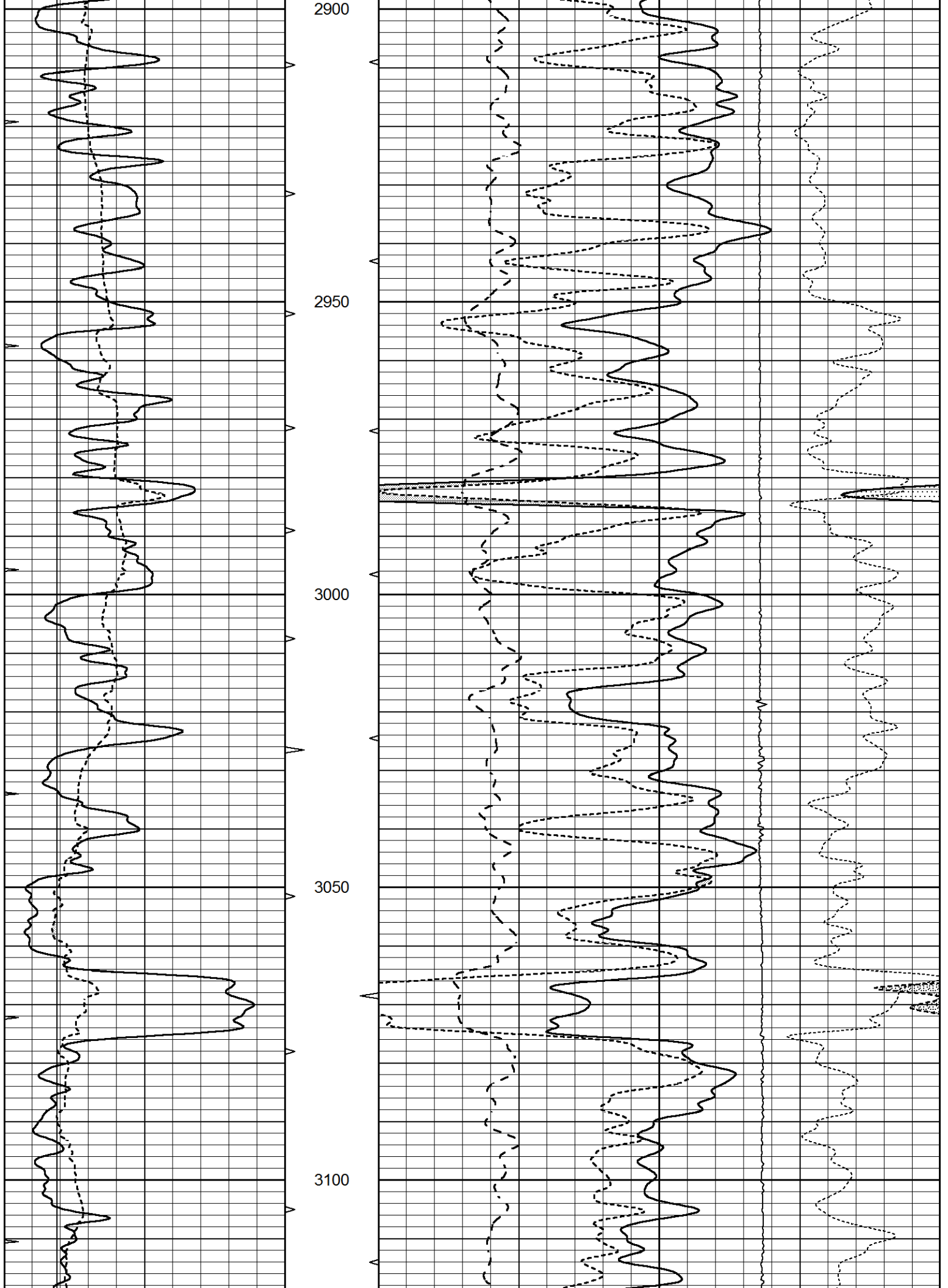
MAIN SECTION

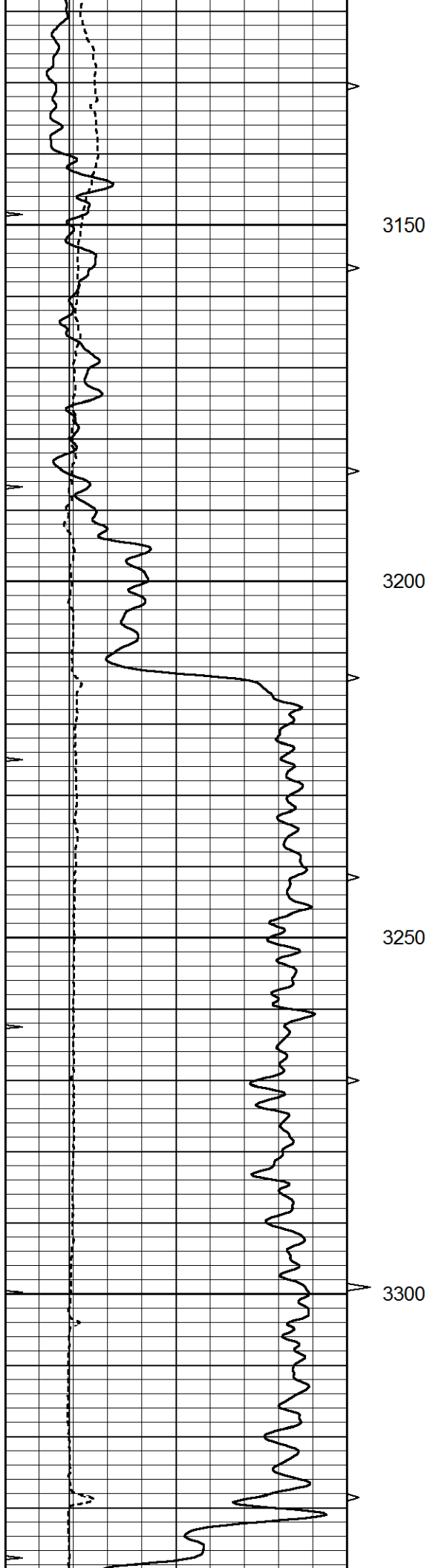
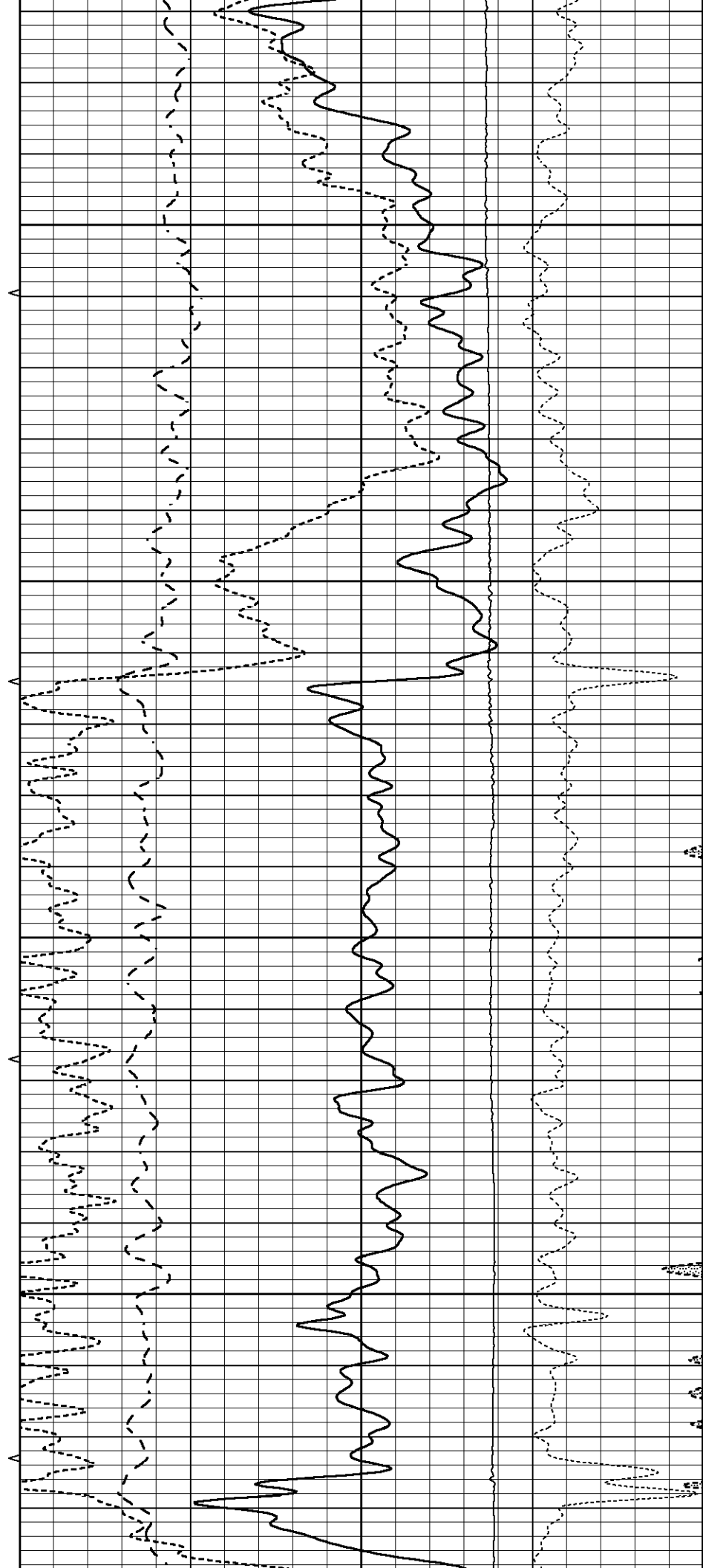
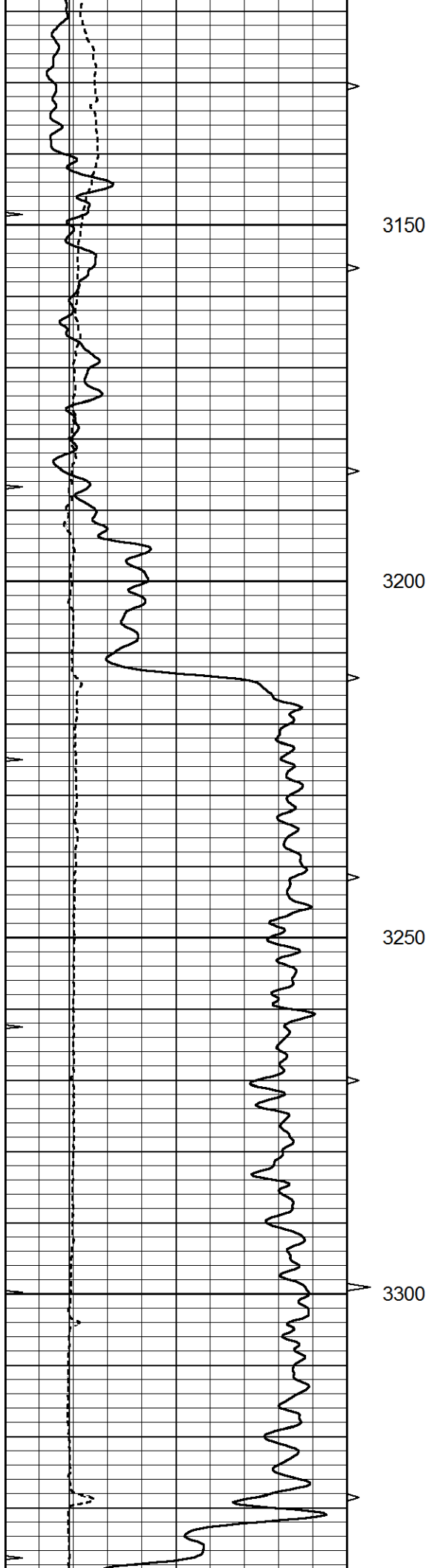
Database File 6925pe.db
 Dataset Pathname pass3.1M
 Presentation Format ldt_neu
 Dataset Creation Tue Sep 13 14:10:15 2022
 Charted by Depth in Feet scaled 1:240

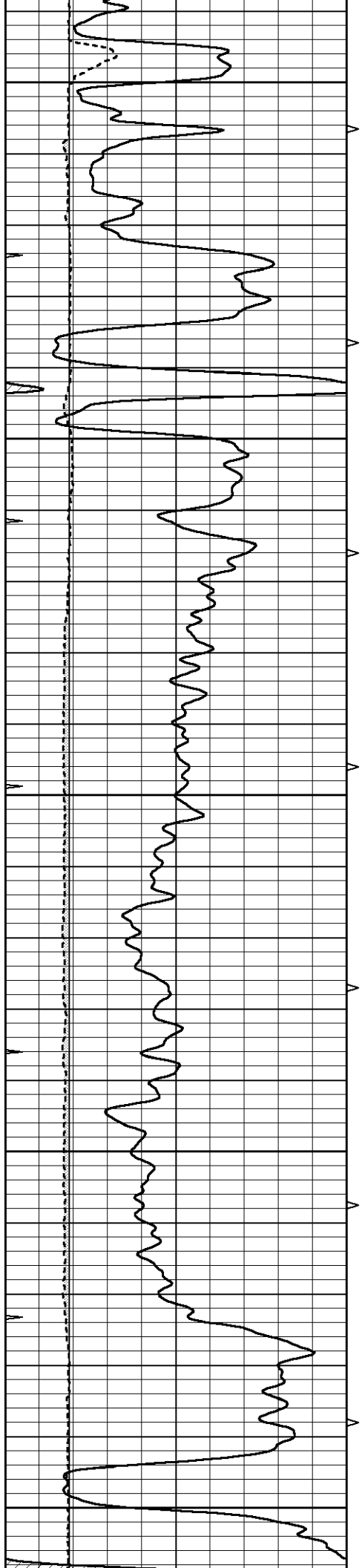
0	GAMMA RAY (GAPI)	150	ABHV	30	COMPENSATED DENSITY (pu)				-10	
6	CALIPER (in)	16	10 (ft3)	0	30	COMPENSATED NEUTRON (pu)				-10
0	MINMK	20	TBHV	0	PE	10	-0.25	CORRECTION (g/cc)	0.25	
			0 (ft3)	10			0	LTEN (lb)	5000	











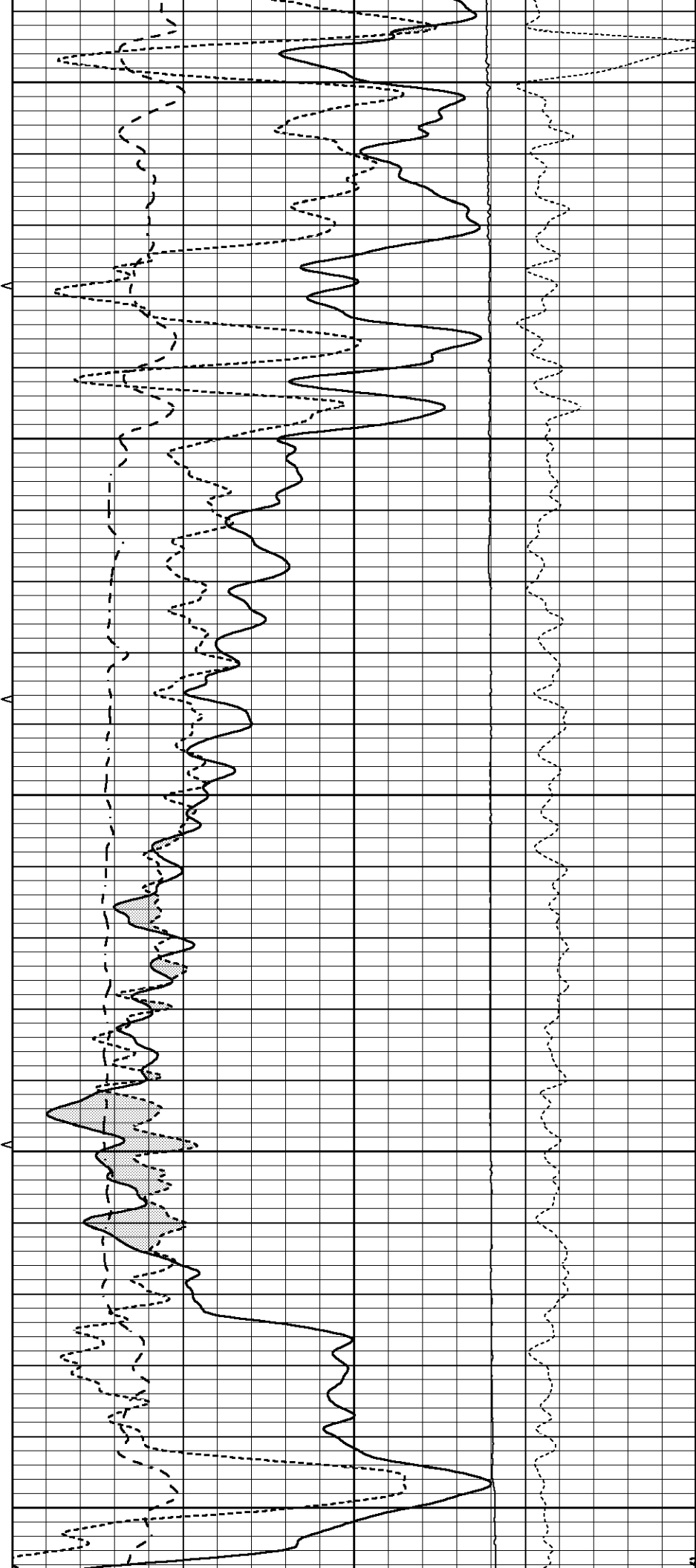
3350

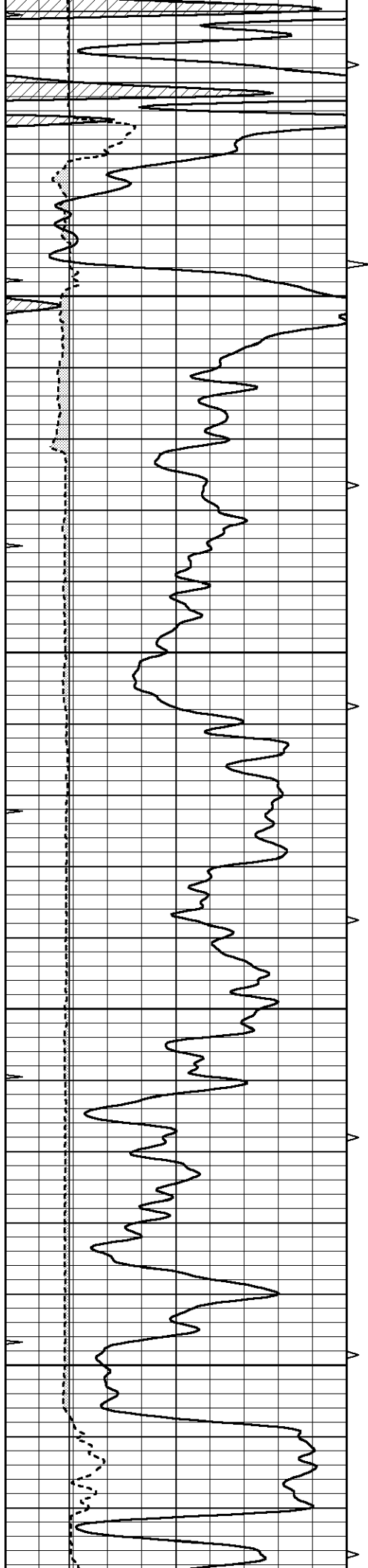
3400

3450

3500

3550



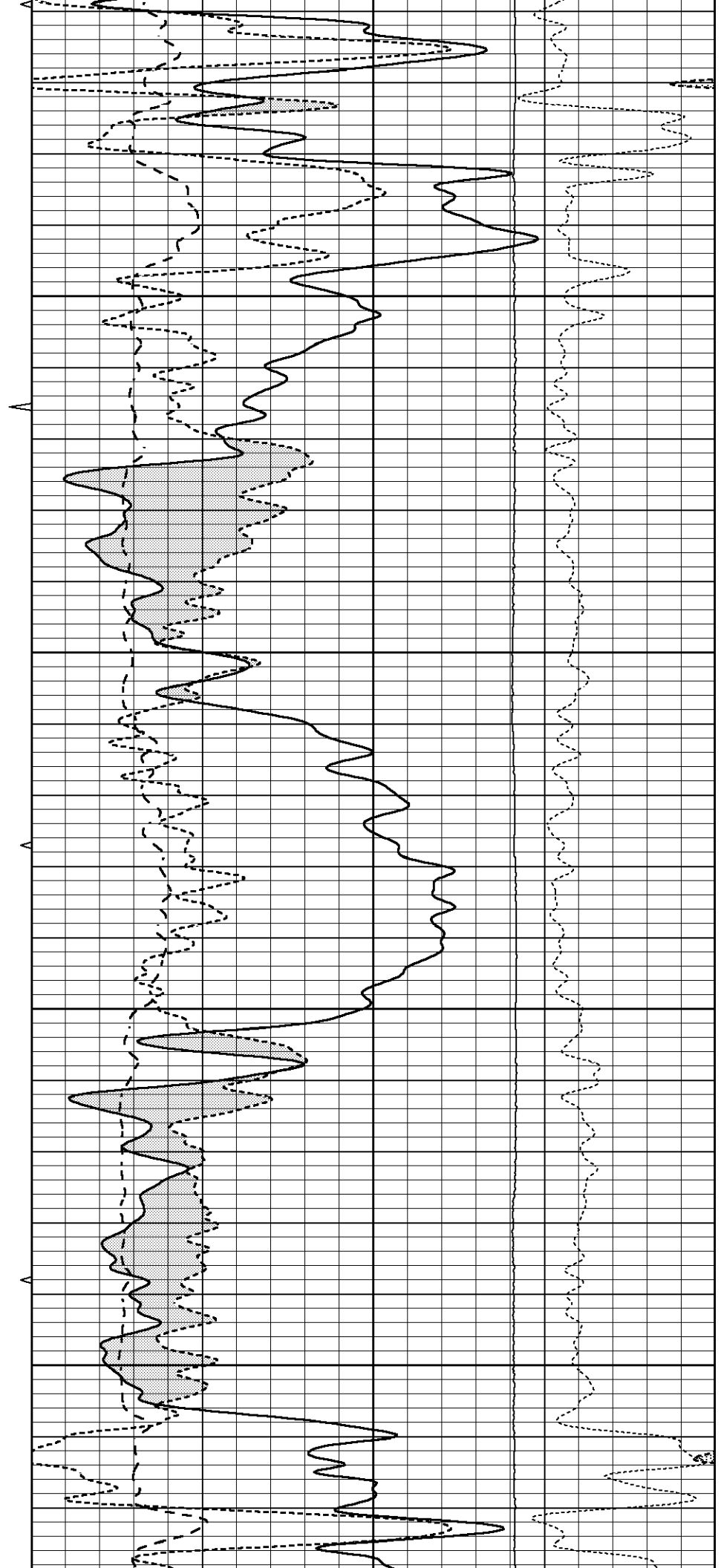


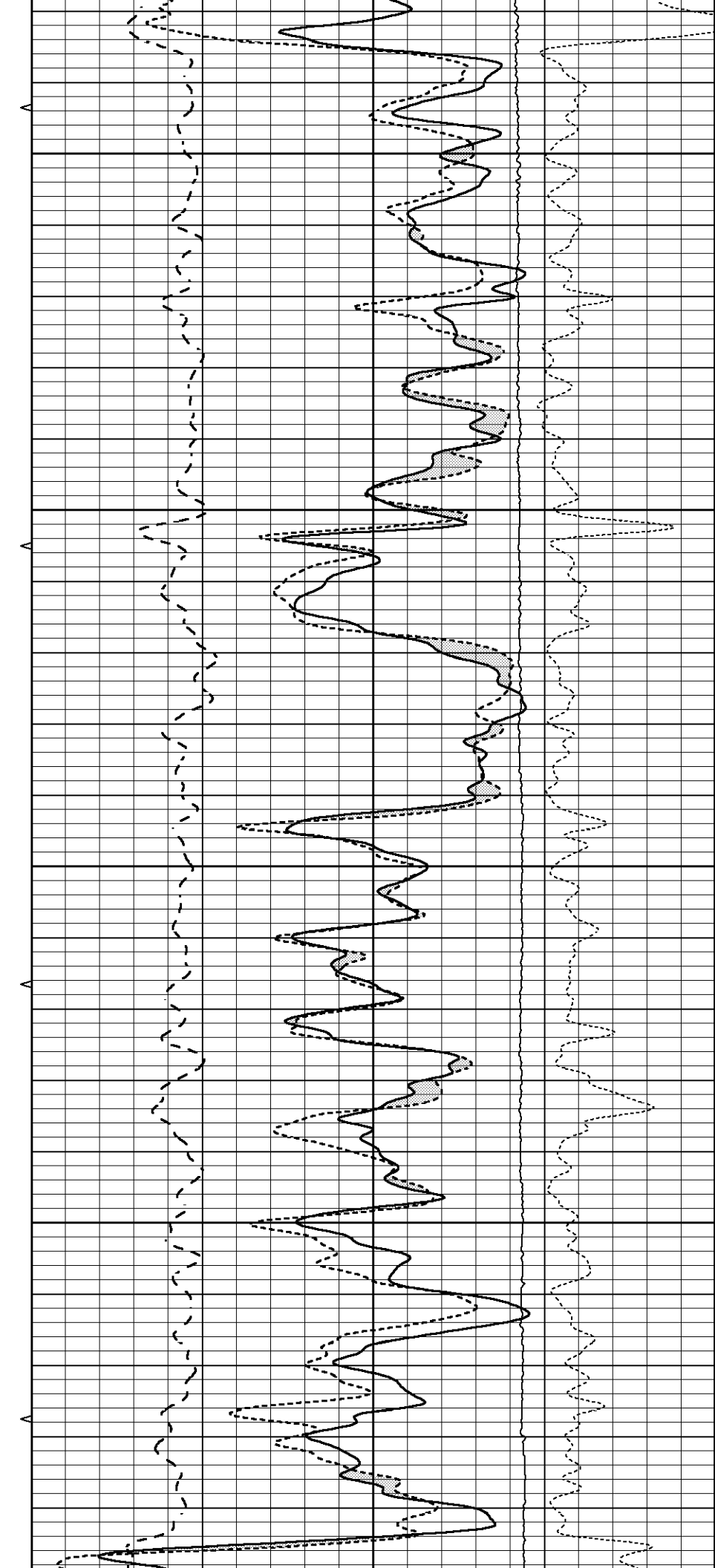
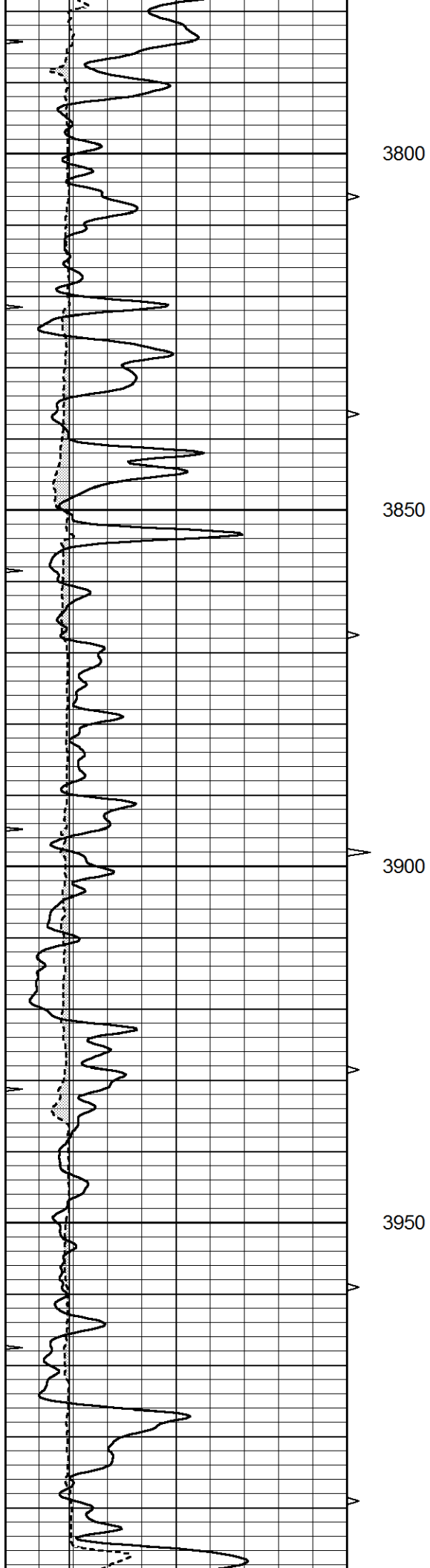
3600

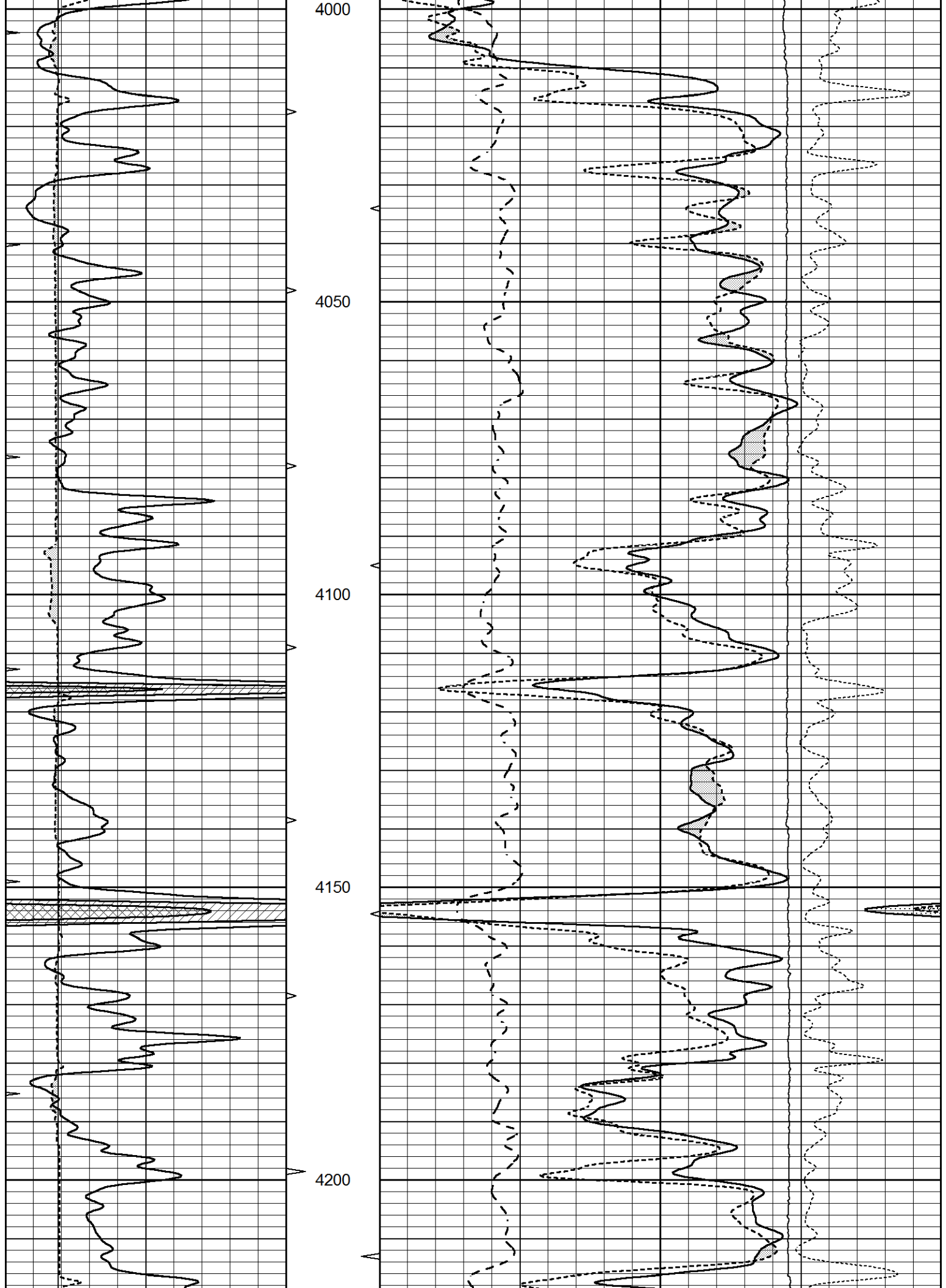
3650

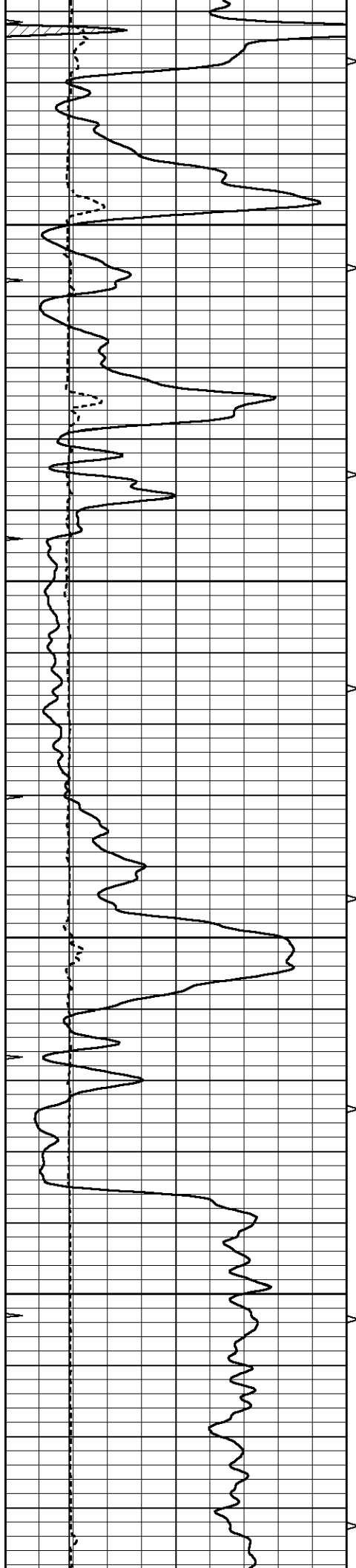
3700

3750







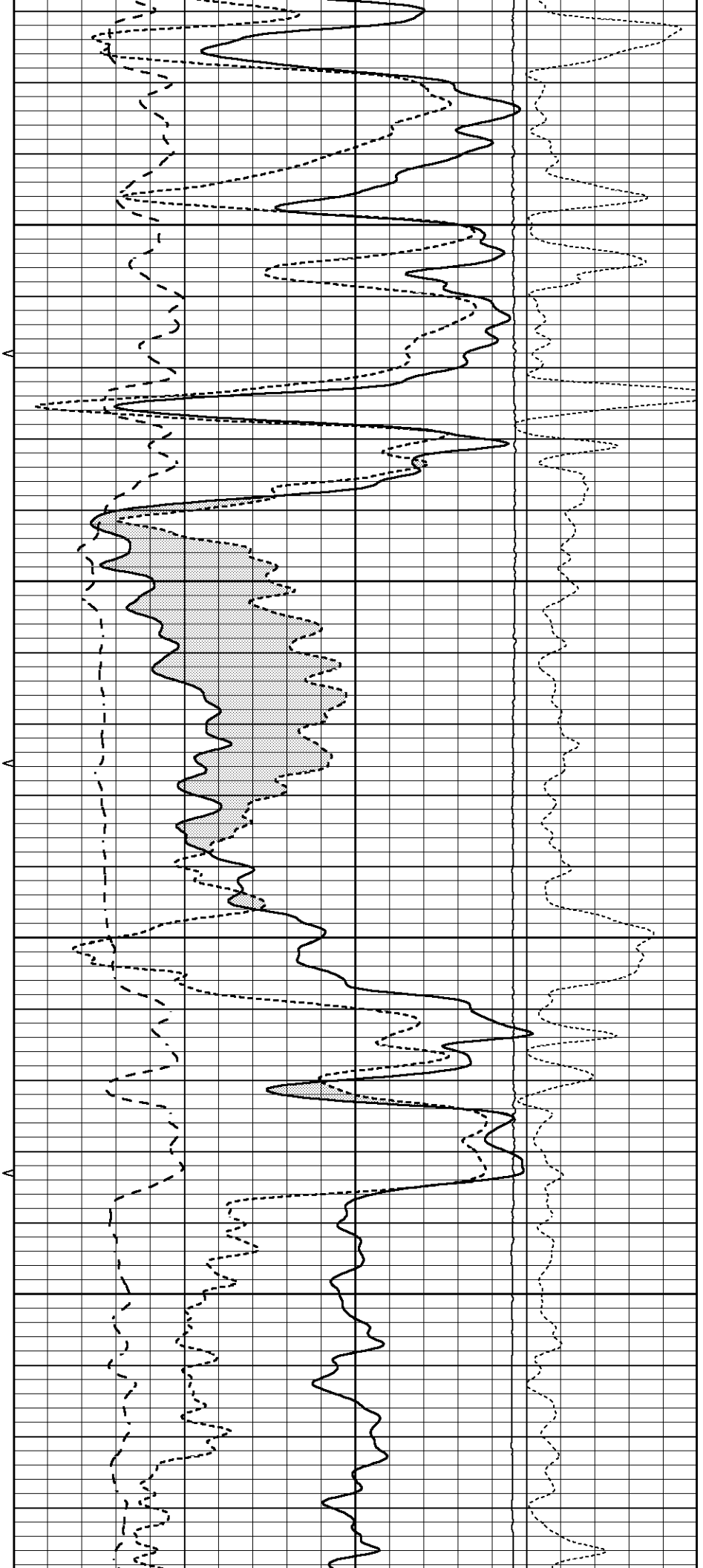


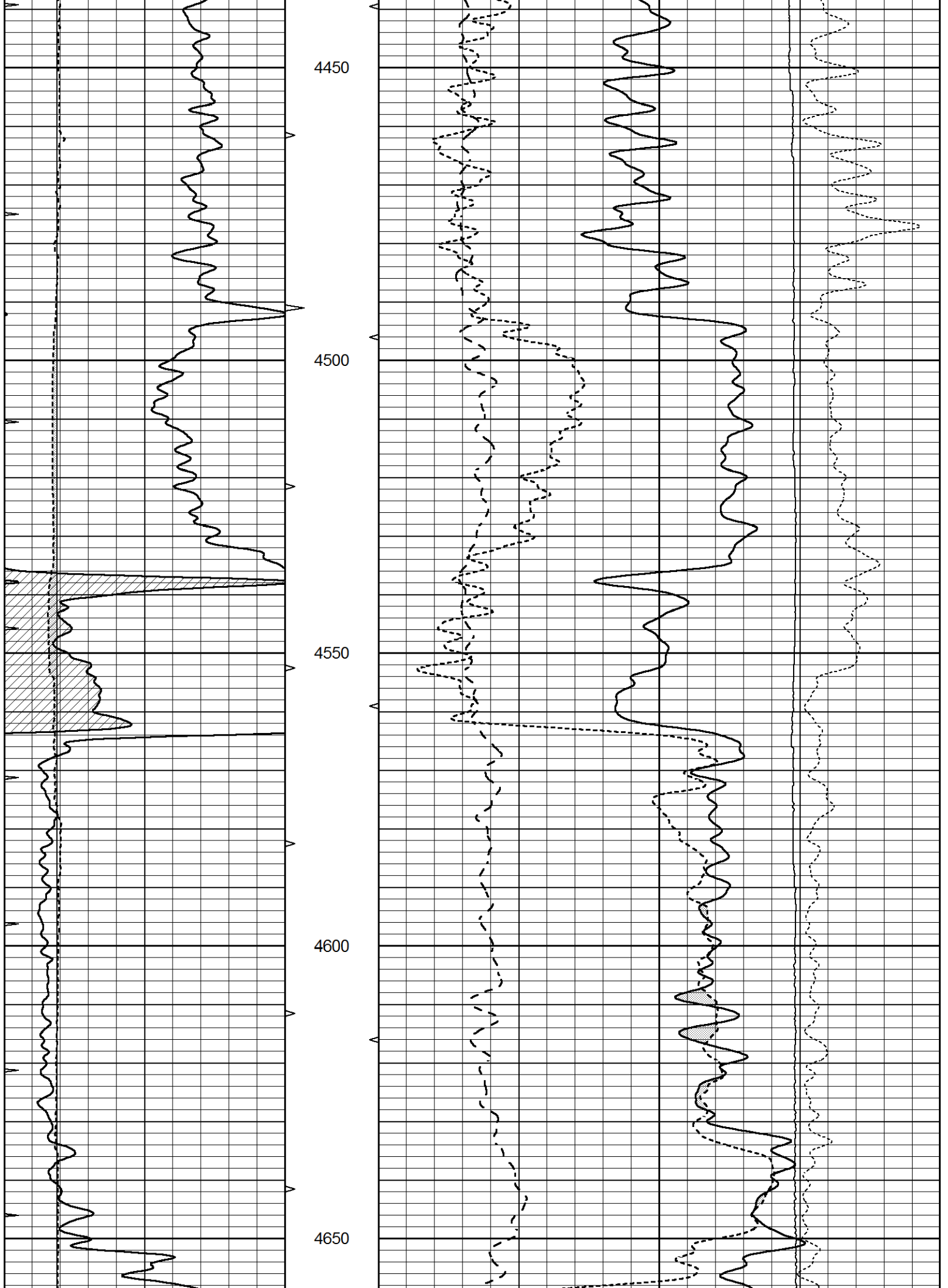
4250

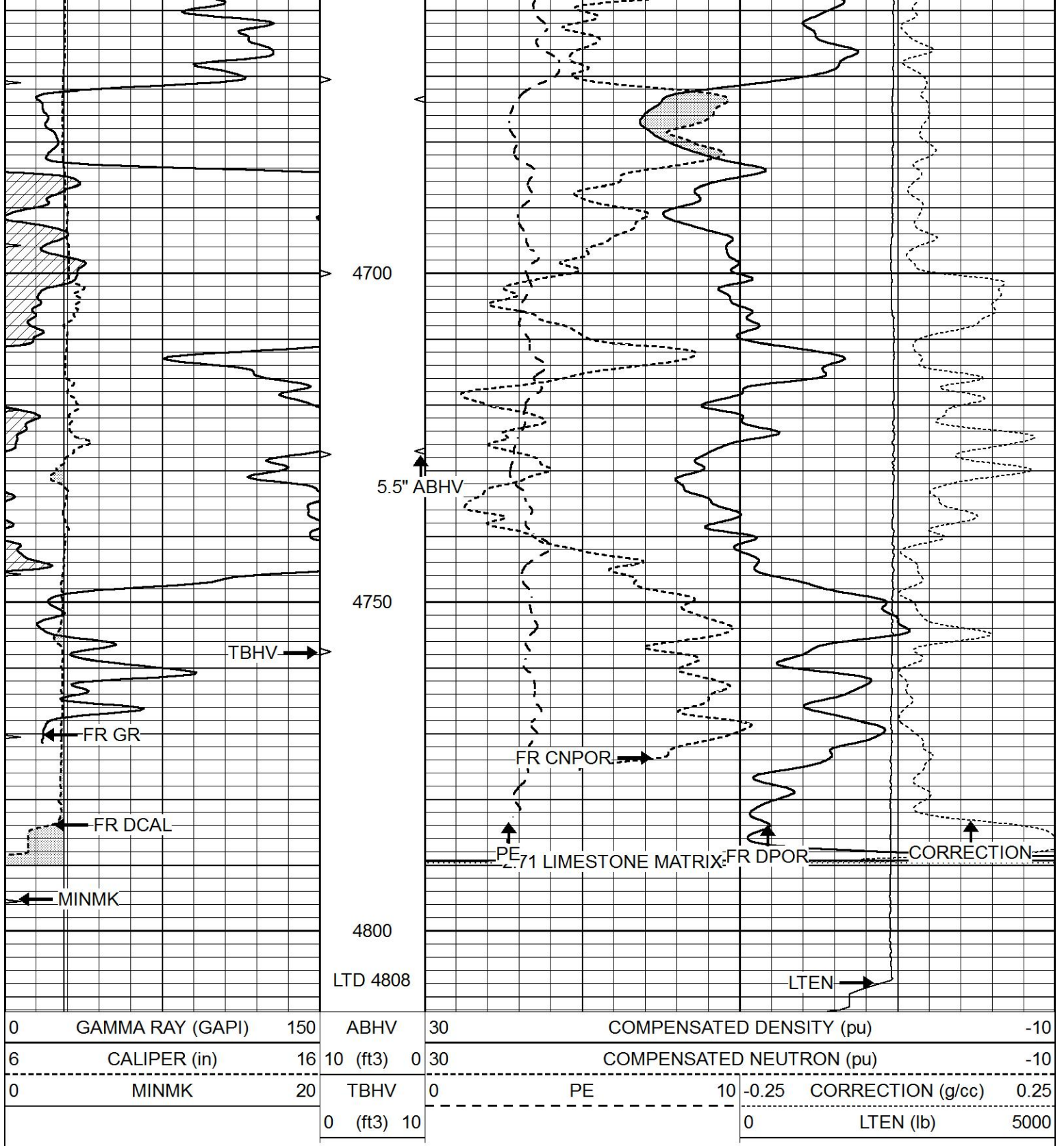
4300

4350

4400



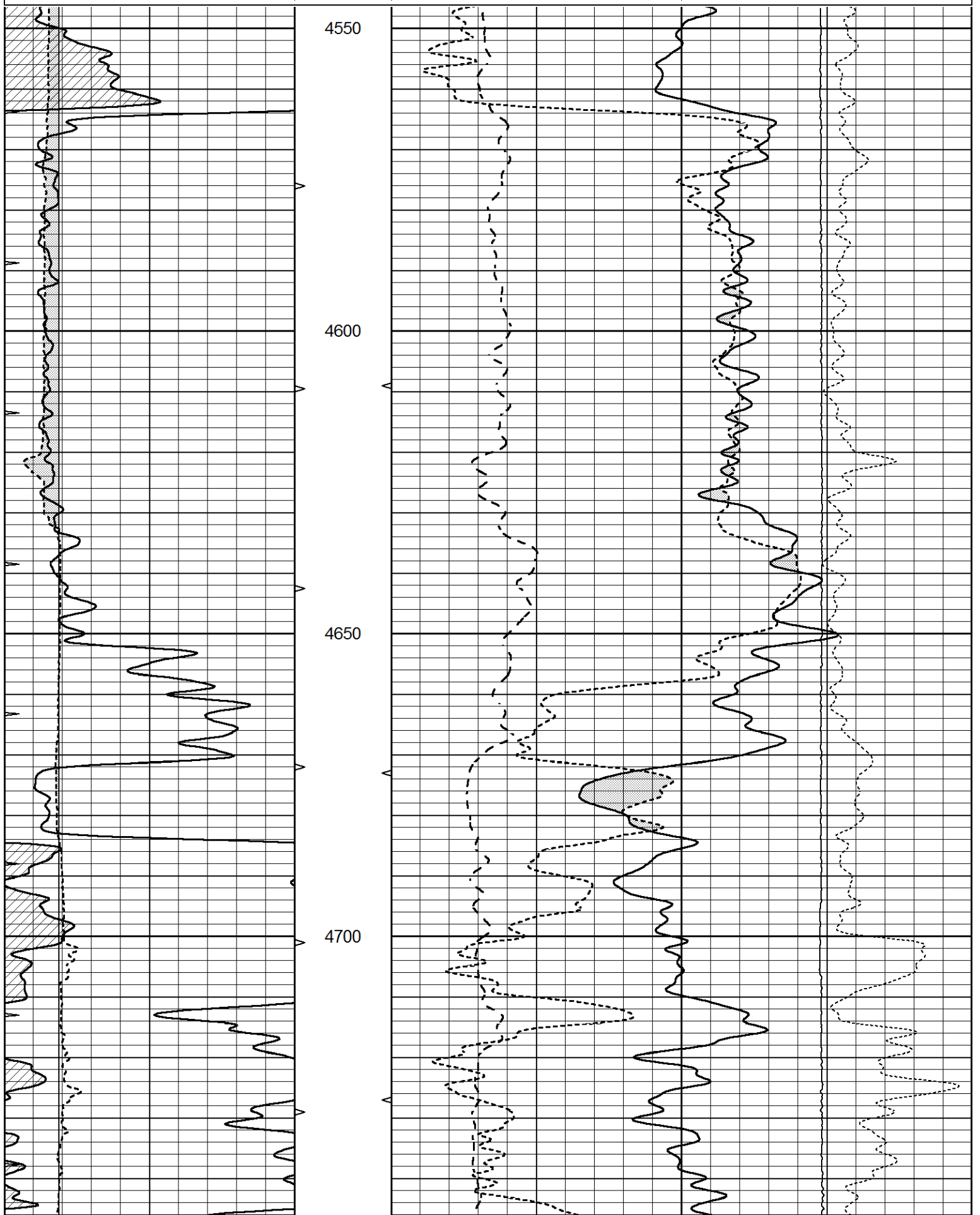


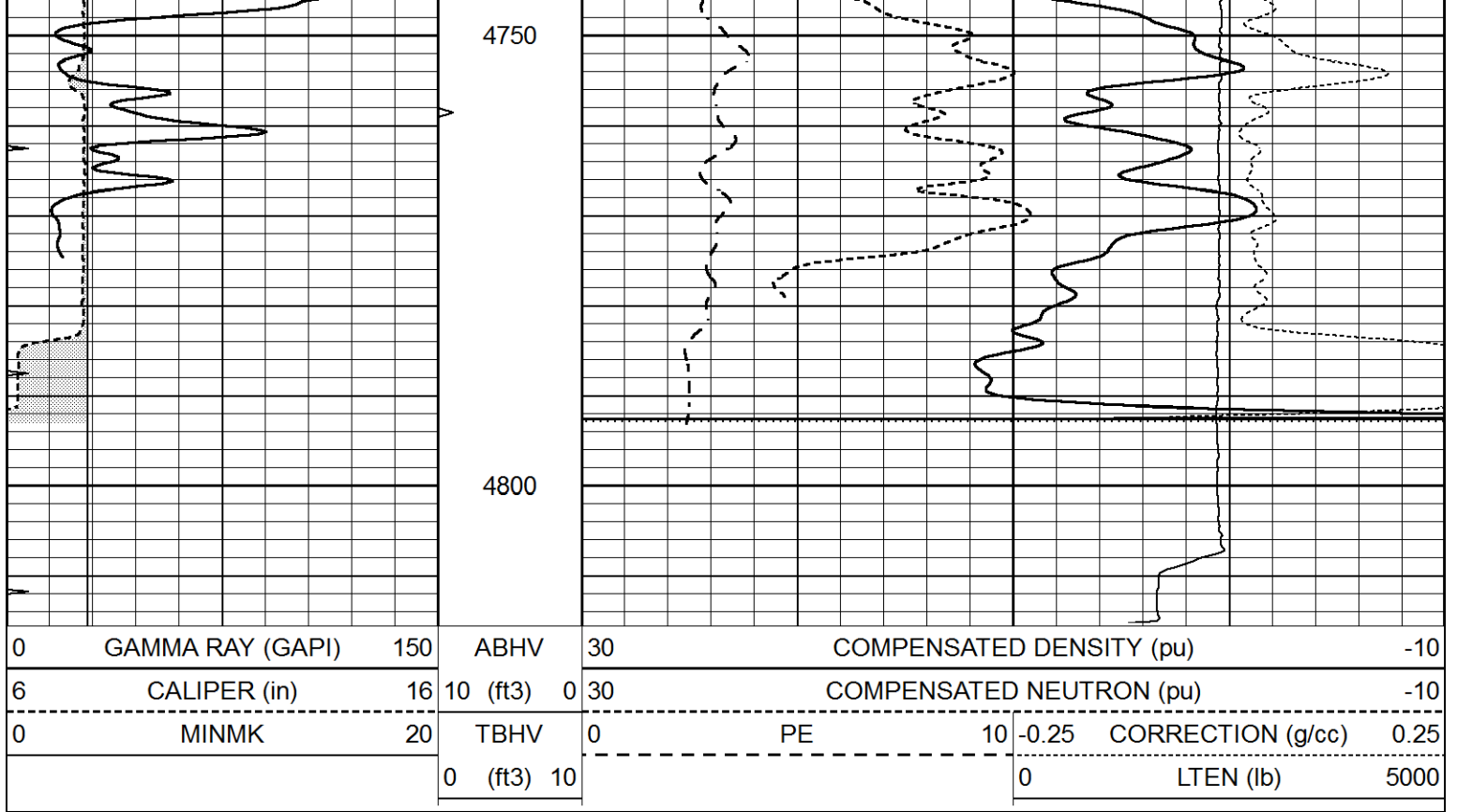


REPEAT SECTION

Database File 6925pe.db
 Dataset Pathname pass2.1R
 Presentation Format ldt_neu
 Dataset Creation Tue Sep 13 14:12:32 2022
 Charted by Depth in Feet scaled 1:240

0	GAMMA RAY (GAPI)	150	ABHV	30	COMPENSATED DENSITY (pu)	-10			
6	CALIPER (in)	16	10 (ft3)	0	30	COMPENSATED NEUTRON (pu)	-10		
0	MINMK	20	TBHV	0	PE	10	-0.25 CORRECTION (g/cc)	0.25	
		0	(ft3)	10			0	LTEN (lb)	5000





Calibration Report

Database File 6925pe.db
 Dataset Pathname pass3.1M
 Dataset Creation Tue Sep 13 14:10:15 2022

Dual Induction Calibration Report

Serial-Model: PROBE8-DILG
 Surface Cal Performed: Tue Sep 13 12:18:42 2022
 Downhole Cal Performed: Mon Jul 28 11:08:27 2008
 After Survey Verification Performed: Mon Jul 28 11:08:27 2008

Surface Calibration

Loop:	Readings			V	References			Results	
	Air	Loop			Air	Loop	mmho/m	m	b
Deep	0.015	0.648			0.000	400.000	mmho/m	640.000	14.000
Medium	0.029	0.796			0.000	464.000	mmho/m	630.000	4.000
Internal:	Zero	Cal		Zero	Cal		m	b	
Deep	0.017	0.657	V	0.000	400.000	mmho/m	625.153	-10.619	
Medium	0.016	0.757	V	0.000	464.000	mmho/m	625.992	-9.739	

Downhole Calibration

	Readings			mmho/m	References			Results	
	Zero	Cal			Zero	Cal	mmho/m	m'	b'
Deep	0.000	0.000	mmho/m	2.011	405.777	mmho/m	1.000	0.000	
Medium	0.000	0.000	mmho/m	7.590	503.393	mmho/m	1.000	0.000	
LL3		7.500	V		1500.000	Ohm-m			
		0.000	V		20.000	Ohm-m			
		-7.200	V		3800.000	mmho-m			

After Survey Verification

Readings	Targets	Results
----------	---------	---------

	Zero	Cal		Zero	Cal		m'	b'
Deep	0.000	0.000	mmho/m	0.000	0.000	mmho/m	0.000	0.000
Medium	0.000	0.000	mmho/m	0.000	0.000	mmho/m	0.000	0.000
LL3		1.000	Ohm-m		1.000	Ohm-m		
		0.000	Ohm-m		0.000	Ohm-m		
		1.000	mmho-m		1.000	mmho-m		

Litho Density Calibration Report
Serial: 004 Model: PRB

Master Calibration

Performed Tue Aug 02 11:29:35 2022

	Background	Magnesium	Aluminum	Aluminum+Fe	
Window 1	1154.2	10019.5	3137.9	2795.6	cps
Window 2	1054.4	8597.6	2733.4	2469.5	cps
Window 3	902.3	5241.4	1832.1	1719.3	cps
Window 4	251.9	261.1	255.8	252.9	cps
Long Space	0.0	7543.2	1679.0	1415.0	cps
Short Space	4.4	2049.3	1321.7	1116.8	cps
Rho		1.7100	2.5900	0.0000	g/cc
Pe		2.0000	2.7500	5.7900	
Rib Angle	: 43.7	Rib Slope	: 0.957	Density/Spine Ratio	: 0.562
Spine Angle	: 73.7	Spine Slope	: 3.426	Spine Intercept	: -17.2

Before Survey Verification

Performed Wed Dec 31 18:00:00 1969

Window 1	0.0	0.0	0.0	0.0	cps
Window 2	0.0	0.0	0.0	0.0	cps
Window 3	0.0	0.0	0.0	0.0	cps
Window 4	0.0	0.0	0.0	0.0	cps
Long Space	0.0	0.0	0.0	0.0	cps
Short Space	0.0	0.0	0.0	0.0	cps
Measured Rho		0.0000	0.0000	0.0000	g/cc
Measured Correction		0.0000	0.0000	0.0000	g/cc
Measured Pe			0.0000	0.0000	

After Survey Verification

Performed Wed Dec 31 18:00:00 1969

Window 1	0.0	0.0	0.0	0.0	cps
Window 2	0.0	0.0	0.0	0.0	cps
Window 3	0.0	0.0	0.0	0.0	cps
Window 4	0.0	0.0	0.0	0.0	cps
Long Space	0.0	0.0	0.0	0.0	cps
Short Space	0.0	0.0	0.0	0.0	cps
Measured Rho		0.0000	0.0000	0.0000	g/cc
Measured Correction		0.0000	0.0000	0.0000	g/cc
Measured Pe			0.0000	0.0000	

Compensated Neutron Calibration Report

Serial Number: 070808PMC
Tool Model: NABORS

PRE-SURVEY VERIFICATION

Detector	Readings	Measured	Target
----------	----------	----------	--------

Short Space
Long Space

cps
cps

pu

pu

POST-SURVEY VERIFICATION

Detector

Readings

Measured

Target

Short Space
Long Space

cps
cps

pu

pu

Gamma Ray Calibration Report

Serial Number: 070558
Tool Model: OPEN_GR
Performed: Mon Sep 05 14:32:31 2022

Calibrator Value: 1.0 GAPI

Background Reading: 0.0 cps
Calibrator Reading: 1.0 cps

Sensitivity: 0.3000 GAPI/cps