

MICRO LOG



Company INDIAN OIL COMPANY, INC.
 Well BANKS NORTH #3
 Field AMBER CREEK
 County BARBER State KANSAS

Location: API #: 15-007-24440-0000
 1512' FNL & 2180' FEL
 NE - NW - SW - SE
 Permanent Datum GROUND LEVEL Elevation 1673
 Log Measured From KELLY BUSHING 12' A.G.L.
 Drilling Measured From KELLY BUSHING
 SEC 36 TWP 30S RGE 12W
 Other Services
 CDL/CNL/PE
 DIL/SON/FF
 Elevation
 K.B. 1681
 D.F. 1679
 G.L. 1673

Date	9/13/22
Run Number	TWO
Depth Driller	4810
Depth Logger	4808
Bottom Logged Interval	4792
Top Log Interval	2500
Casing Driller	8 5/8"@305'
Casing Logger	305
Bit Size	7 7/8"
Type Fluid in Hole	CHEMICAL MUD
Density / Viscosity	9.3/44
pH / Fluid Loss	10.5/9.6
Source of Sample	FLOWLINE
Rm @ Meas. Temp	.750@82F
Rmf @ Meas. Temp	.563@82F
Rmc @ Meas. Temp	.900@82F
Source of Rmf / Rmc	MEASUREMENT
Rm @ BHT	.500@123F
Time Circulation Stopped	5 HOURS
Time Logger on Bottom	2.45 P.M.
Maximum Recorded Temperature	123F
Equipment Number	922339
Location	HAYS, KANSAS
Recorded By	JEFF LUEBBERS
Witnessed By	AARON YOUNG

<<< Fold Here >>>

All interpretations are opinions based on inferences from electrical or other measurements and we cannot and do not guarantee the accuracy or correctness of any interpretation, and we shall not, except in the case of gross or willful negligence on our part, be liable or responsible for any loss, costs, damages, or expenses incurred or sustained by anyone resulting from any interpretation made by any of our officers, agents or employees. These interpretations are also subject to our general terms and conditions set out in our current Price Schedule.

15-007-24440-0000 Comments

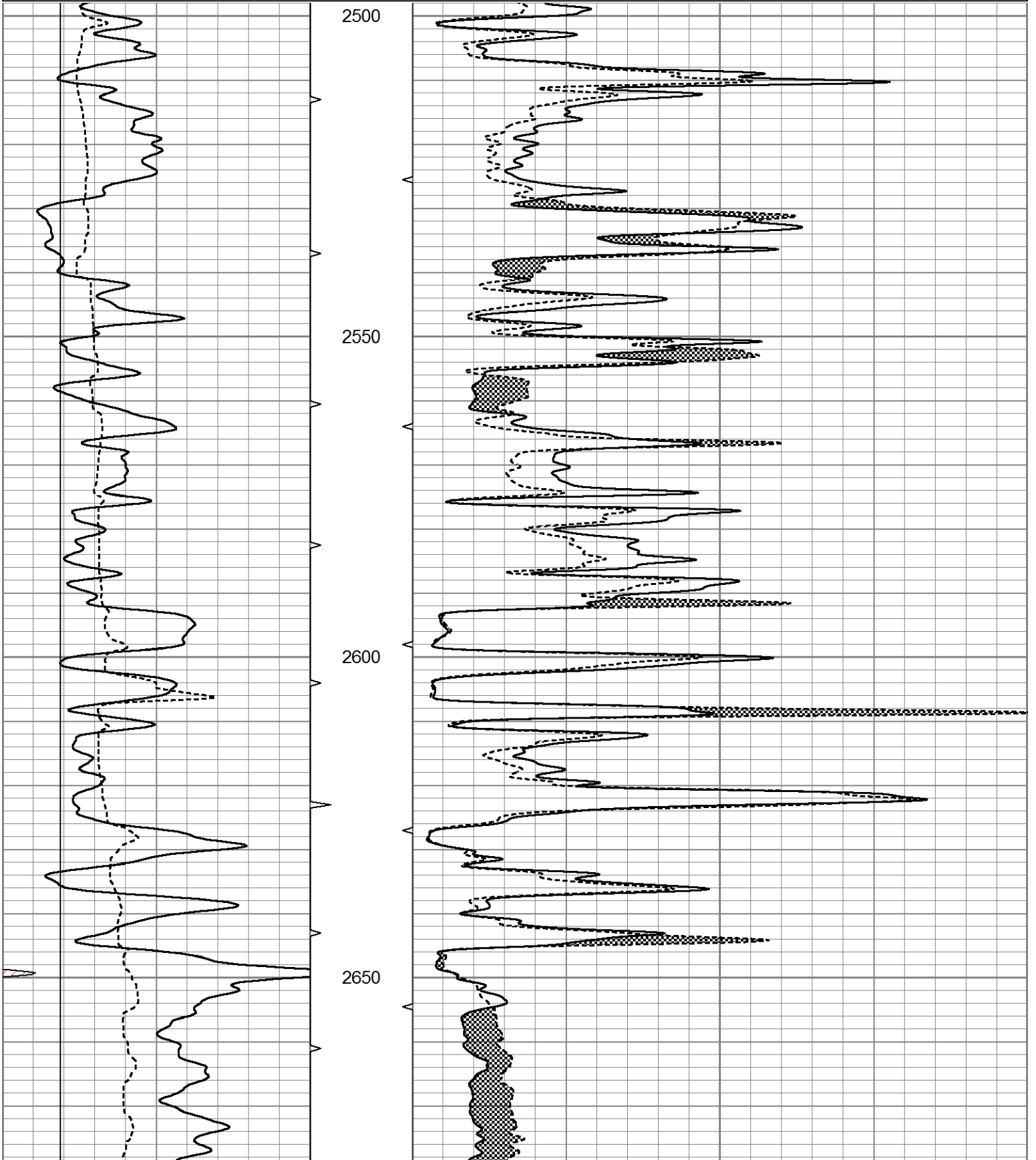
THANK YOU FOR USING ELI WIRELINE HAYS, KANSAS (785) 628-6395
 DIRECTIONS
 SAWYER, KS., S. ON HWY 281 TO "RESORT RD."(99 SPRINGS SIGN), 1 1/2 W., TO GREEN GATES,
 S. INTO, FOLLOW LEASE RD.

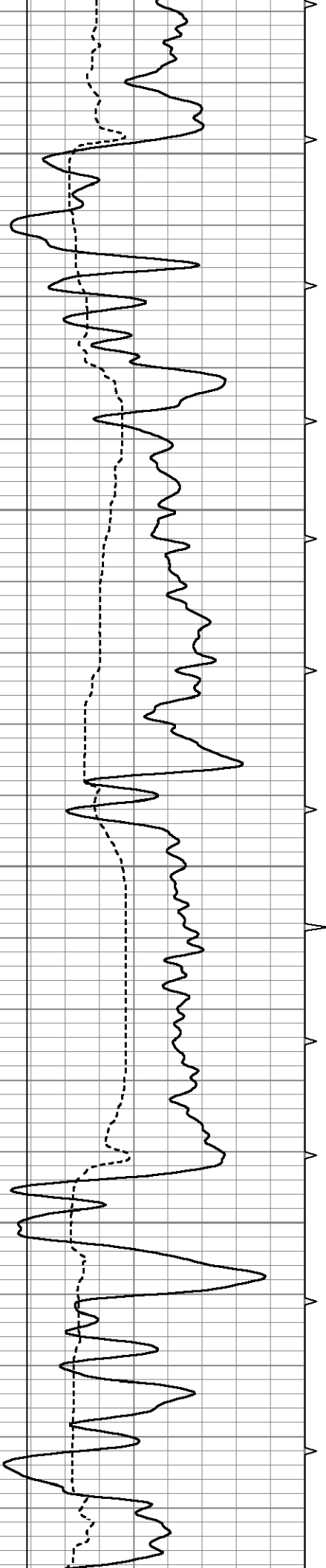


MAIN SECTION

Database File 6925pe.db
 Dataset Pathname pass6.4
 Presentation Format micro
 Dataset Creation Tue Sep 13 16:02:34 2022
 Charted by Depth in Feet scaled 1:240

0	GR (GAPI)	150	ABHV	0	MEL20 (Ohm-m)	40
6	MELCAL (in)	16	10 (ft3)	0	MEL15 (Ohm-m)	40
			ABHV			
			0 (ft3)	10		



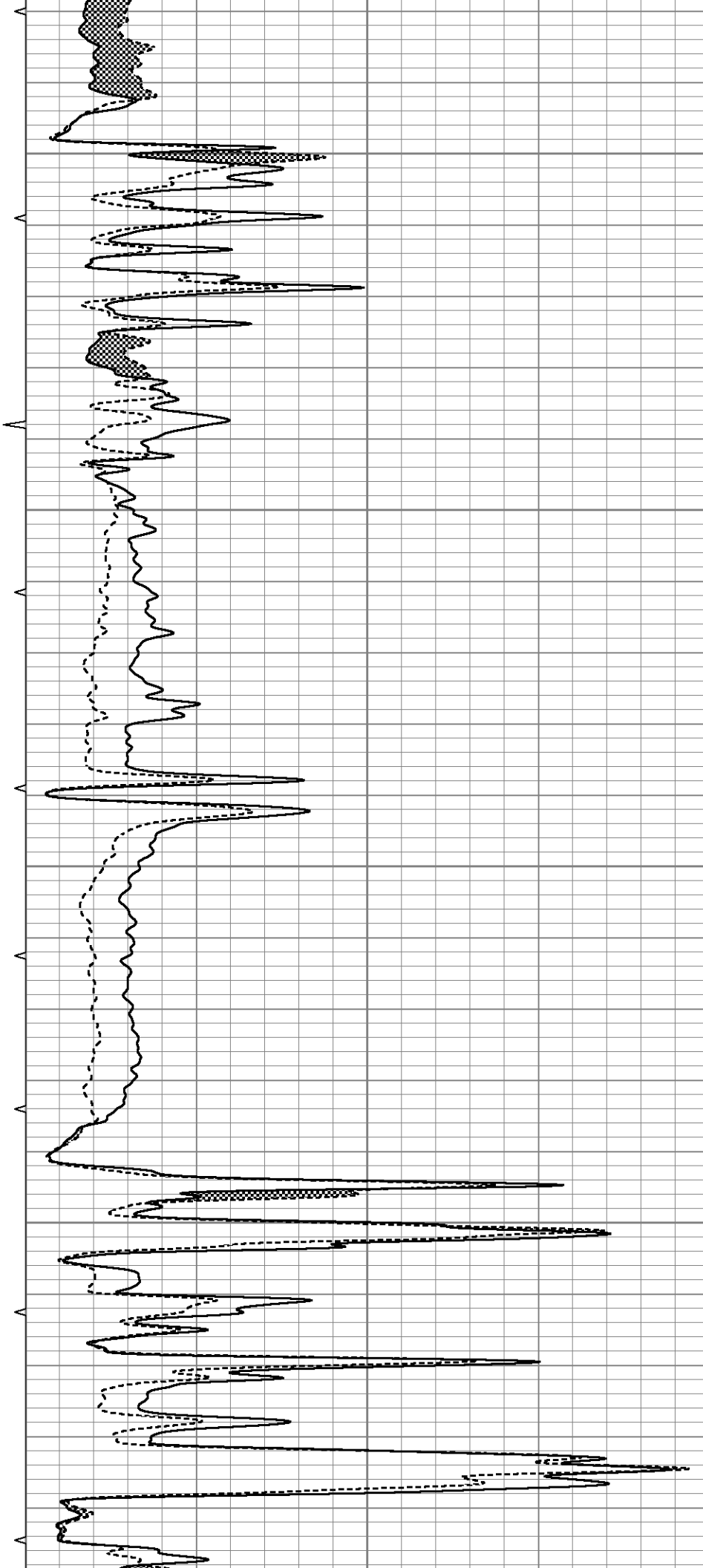


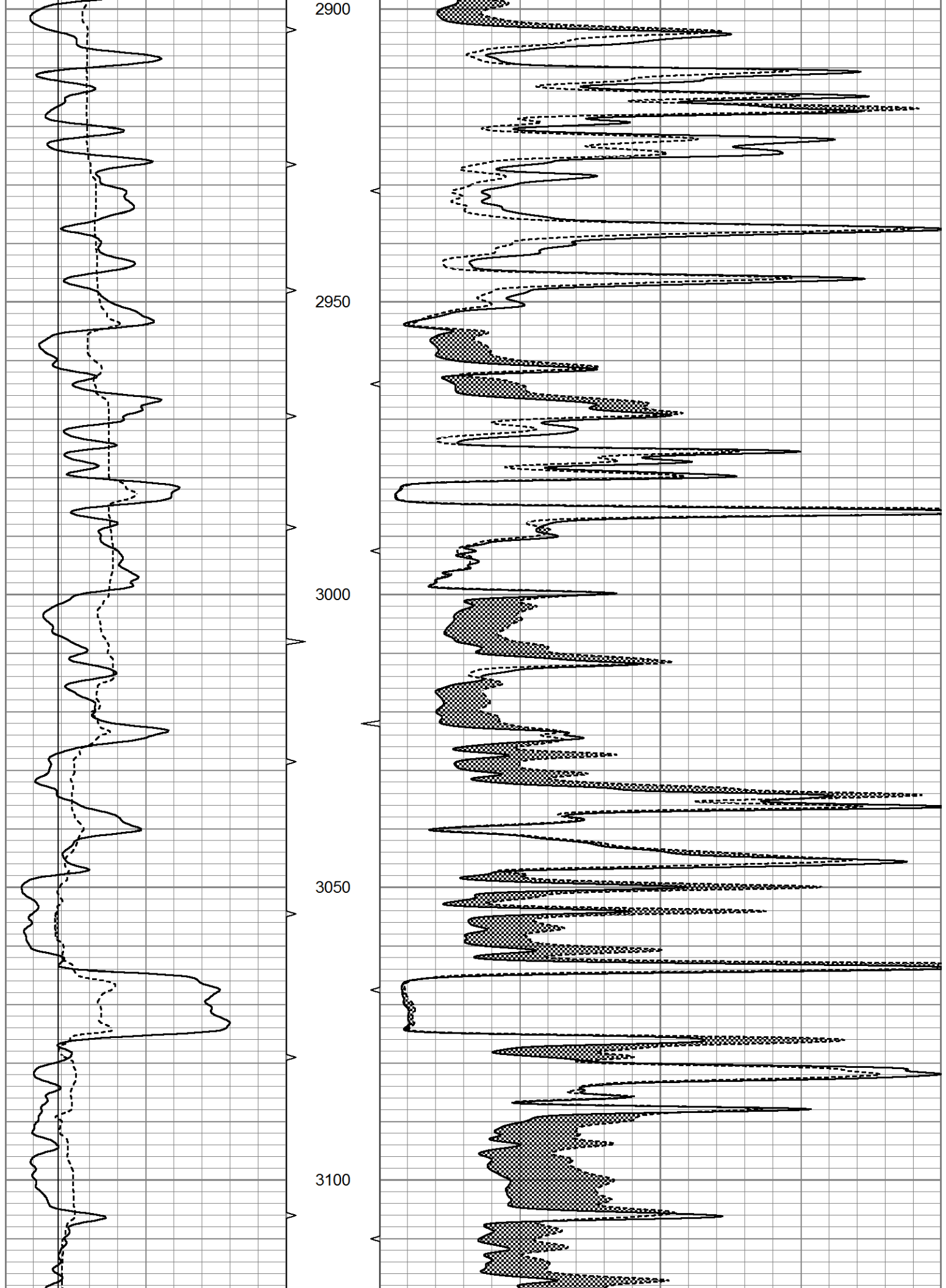
2700

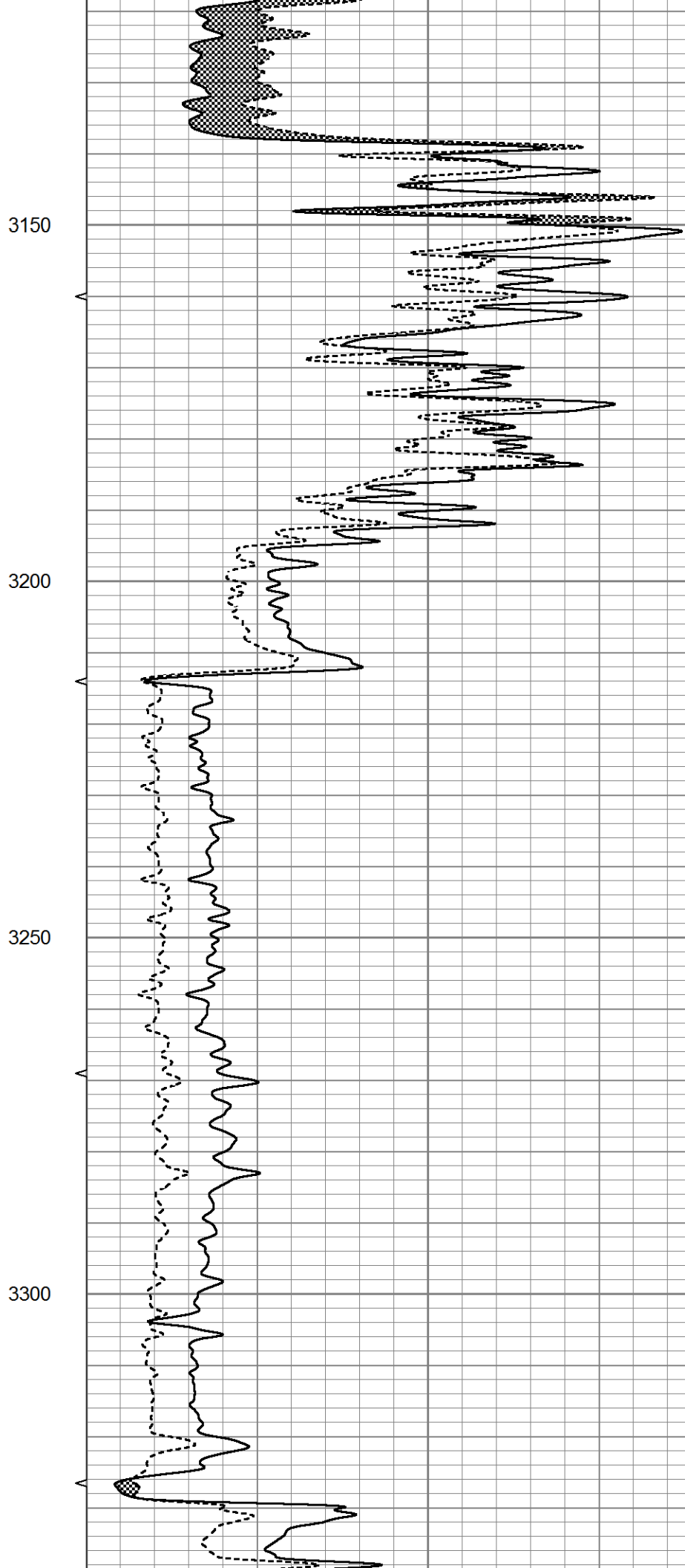
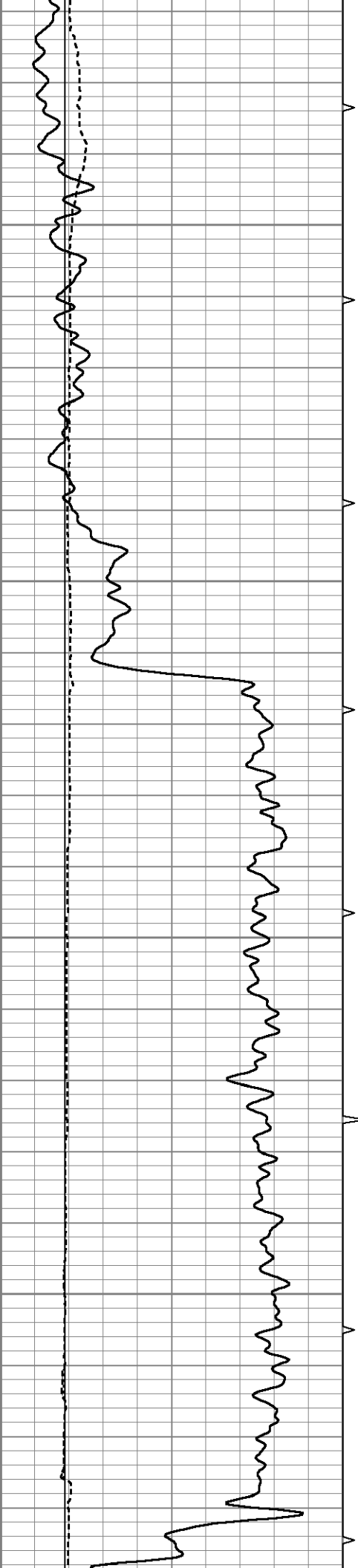
2750

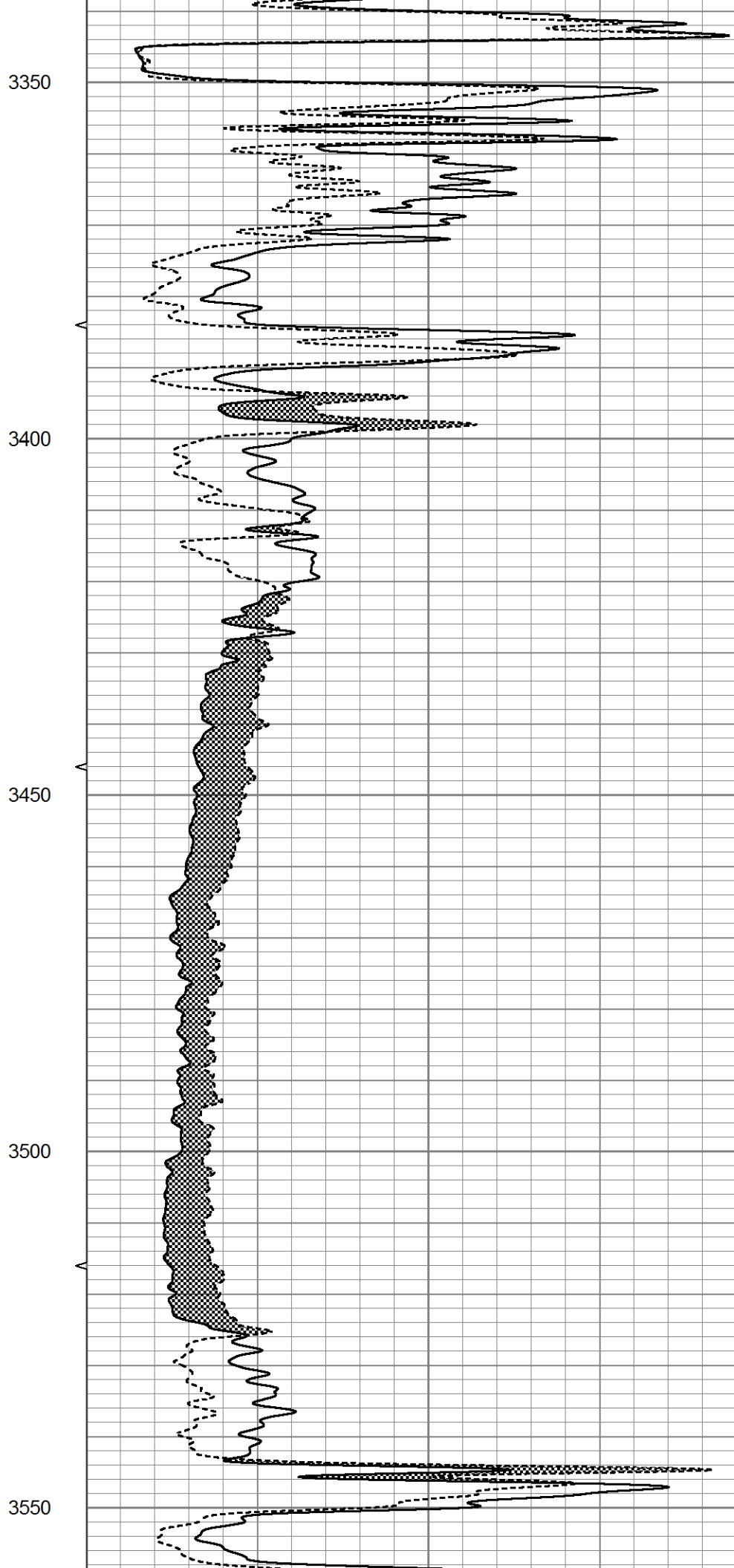
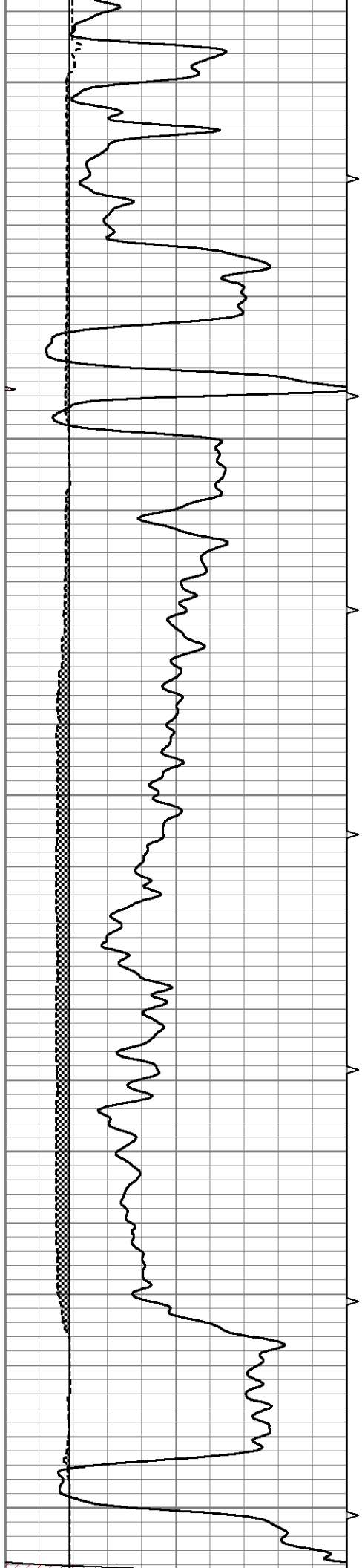
2800

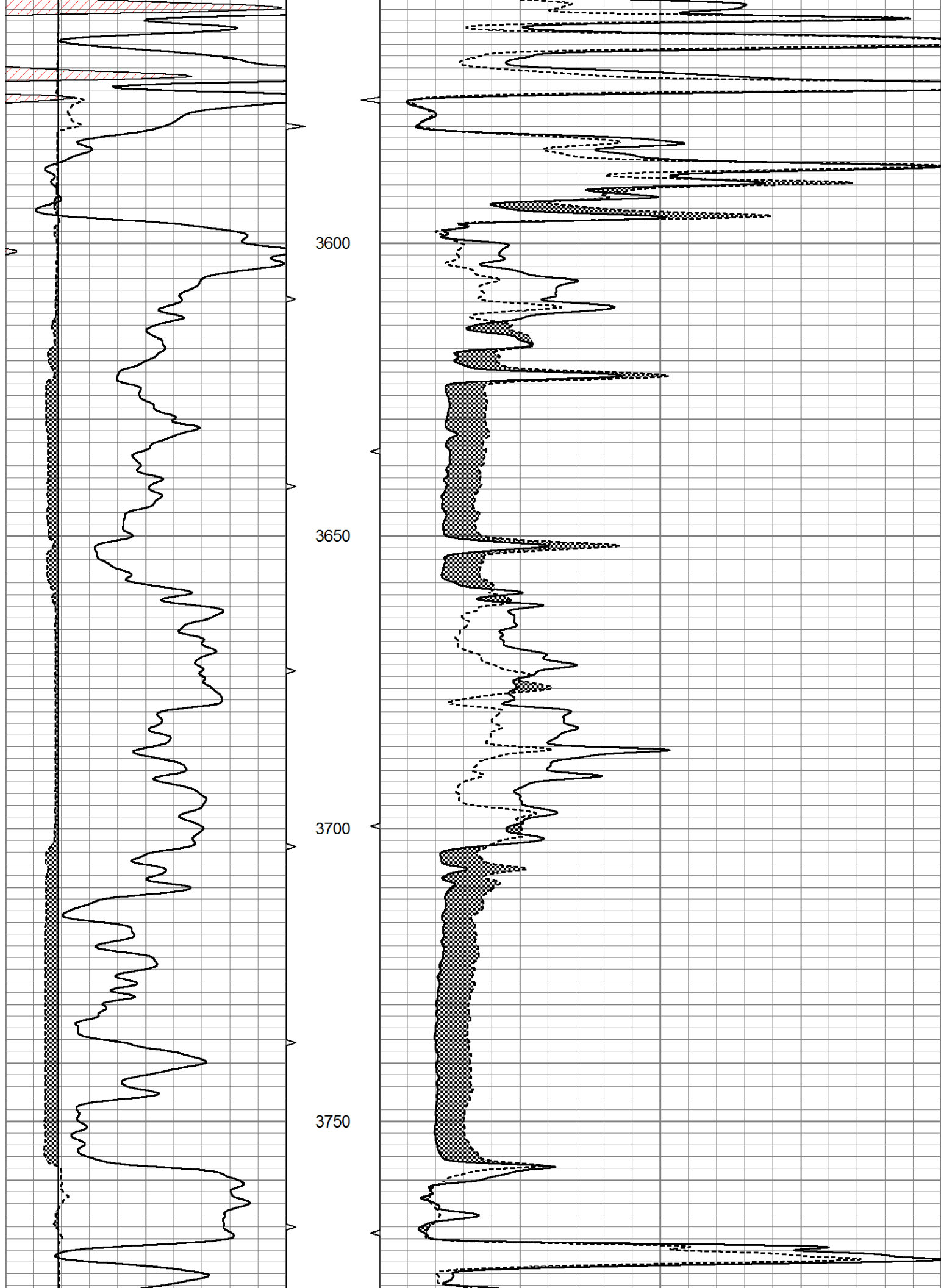
2850

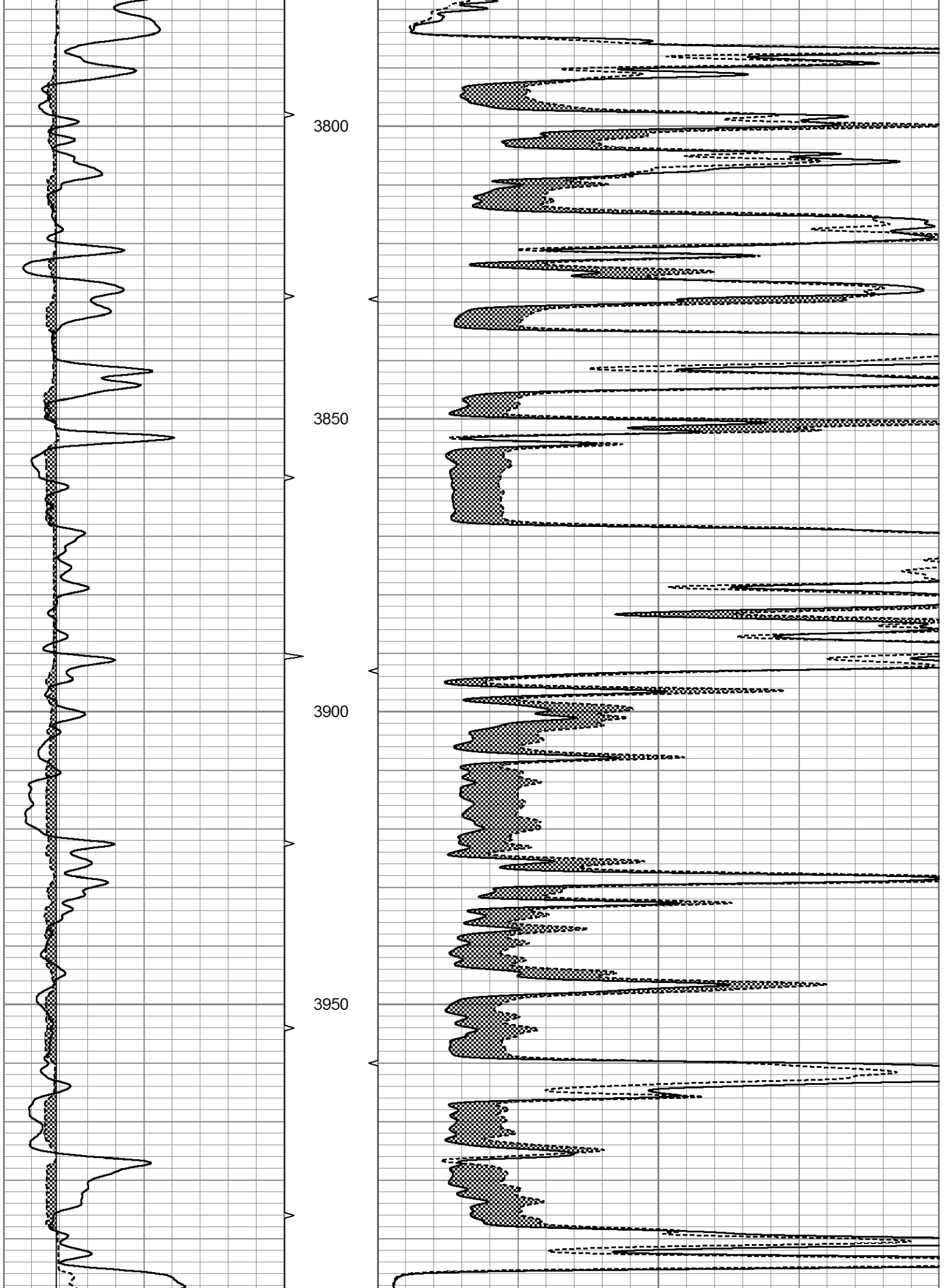


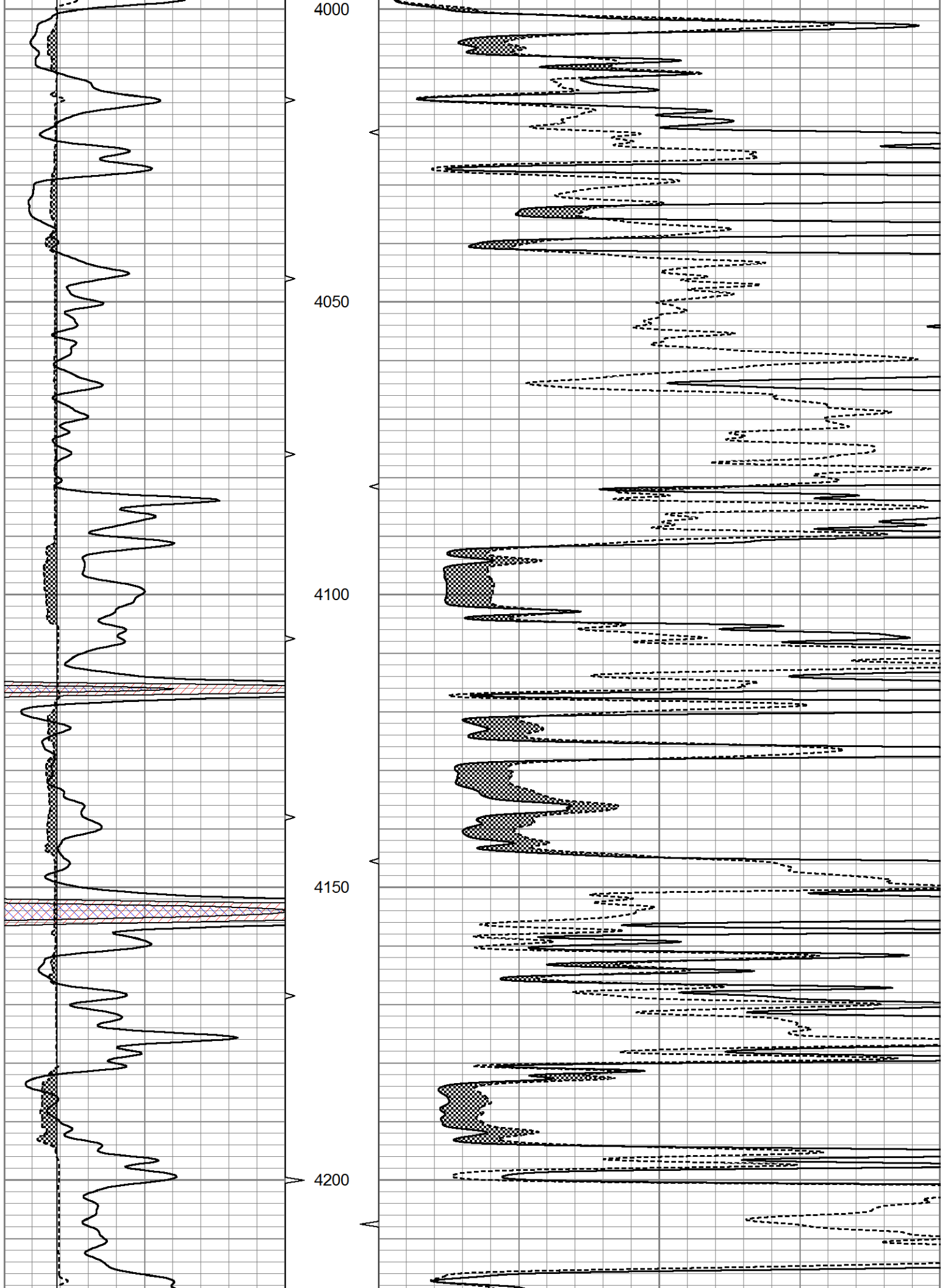


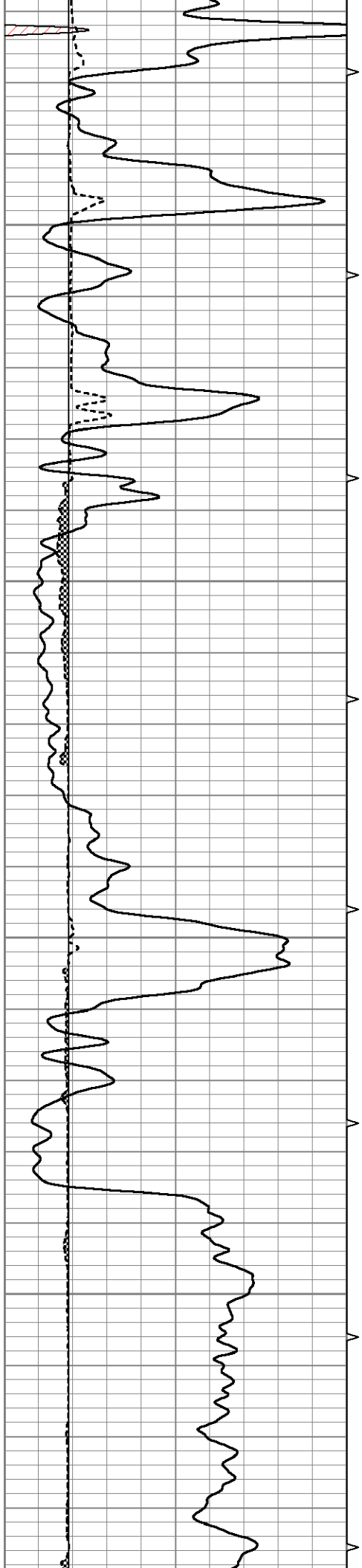










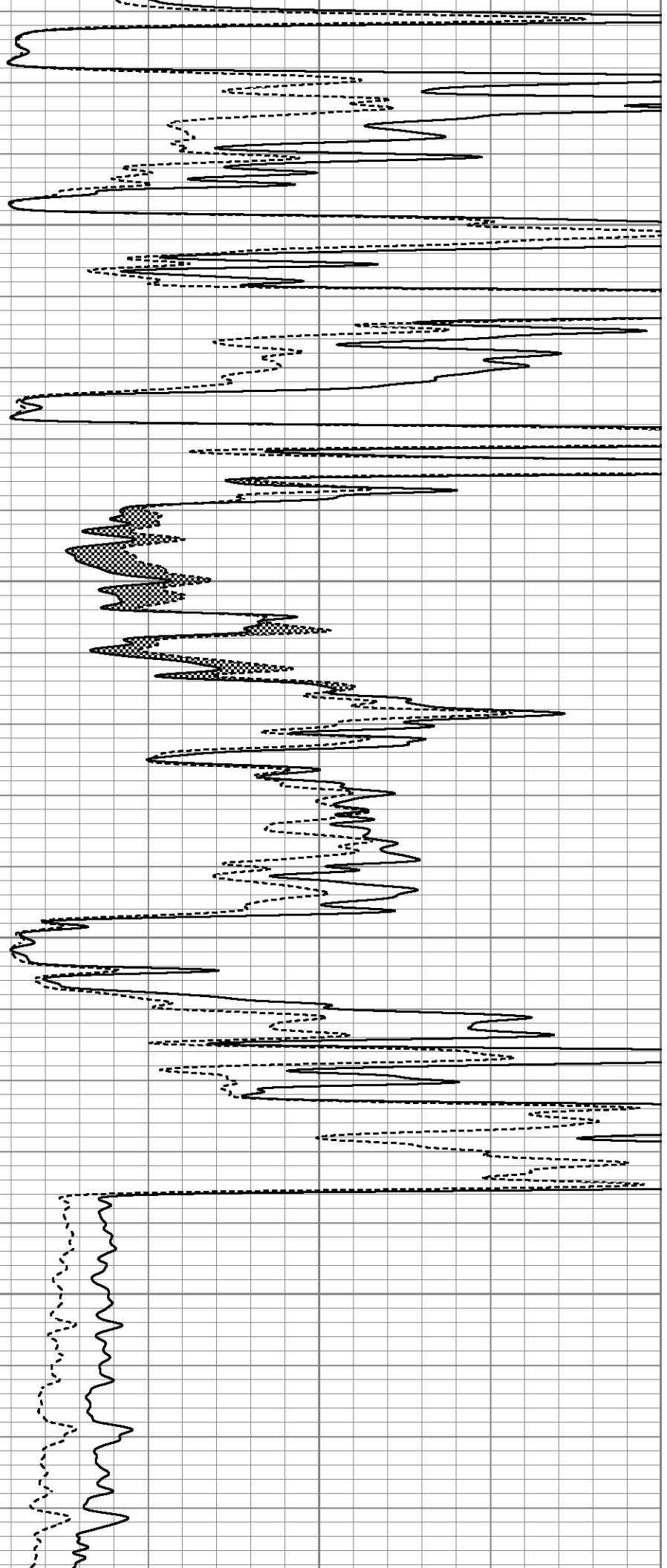


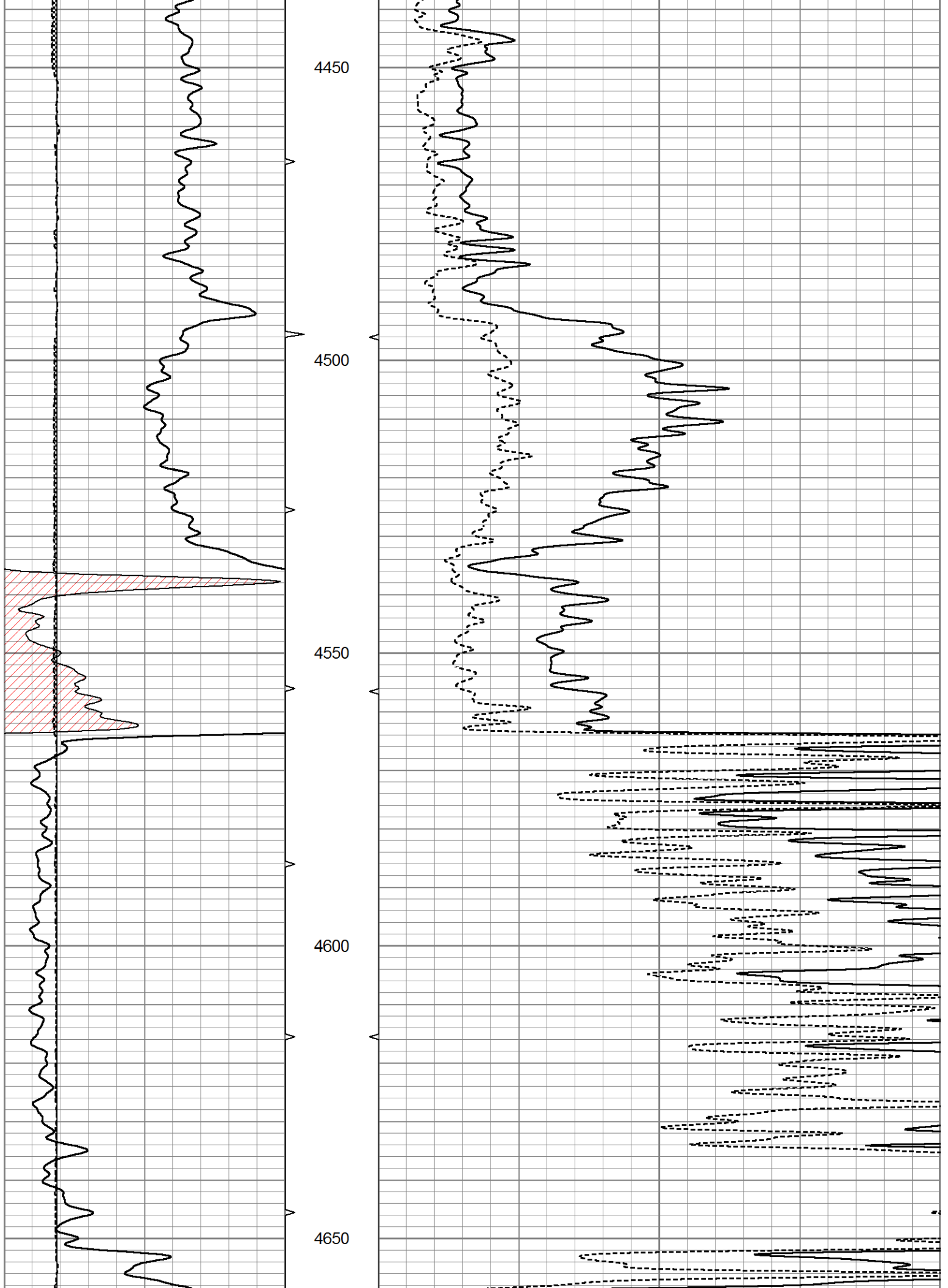
4250

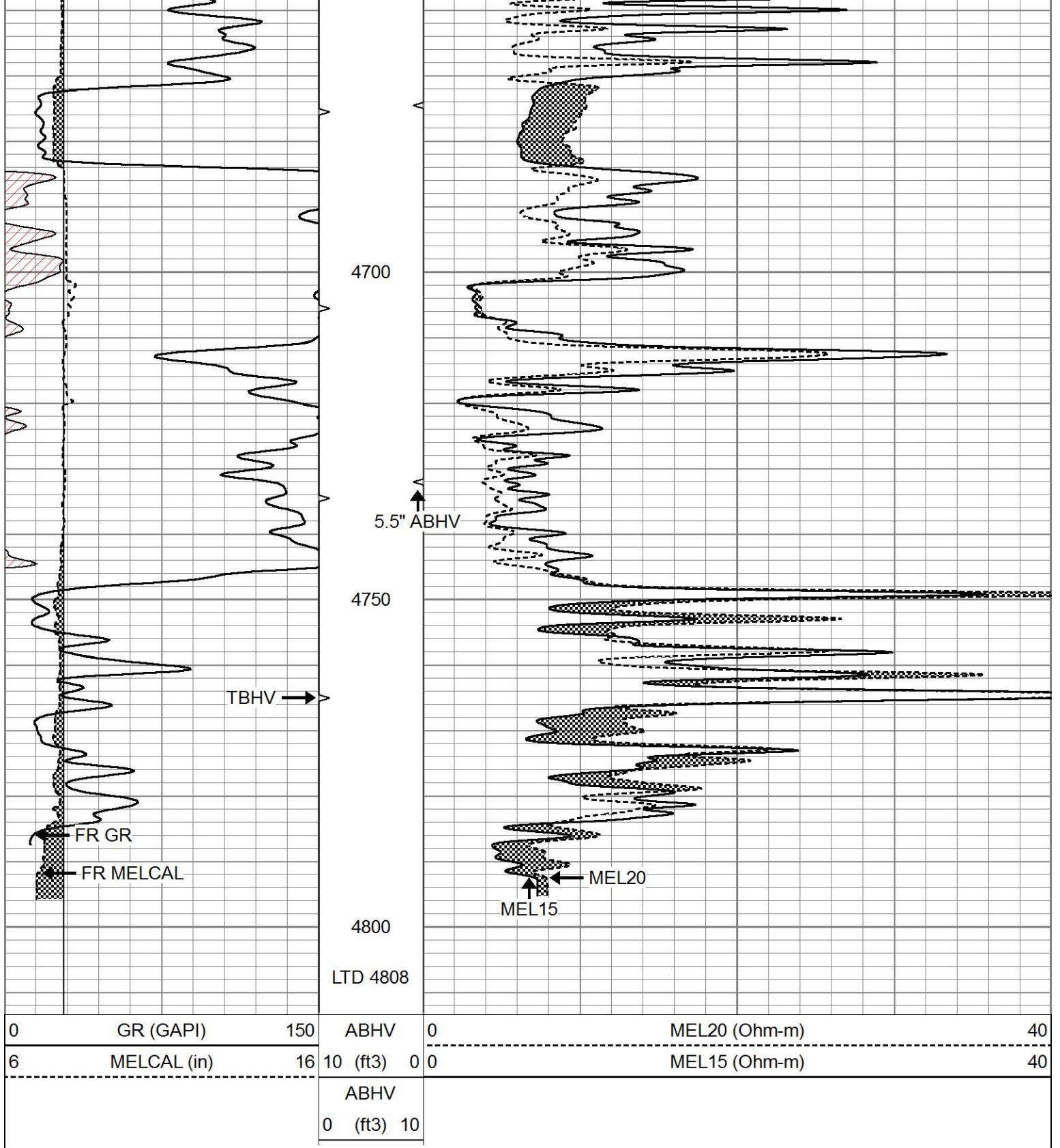
4300

4350

4400



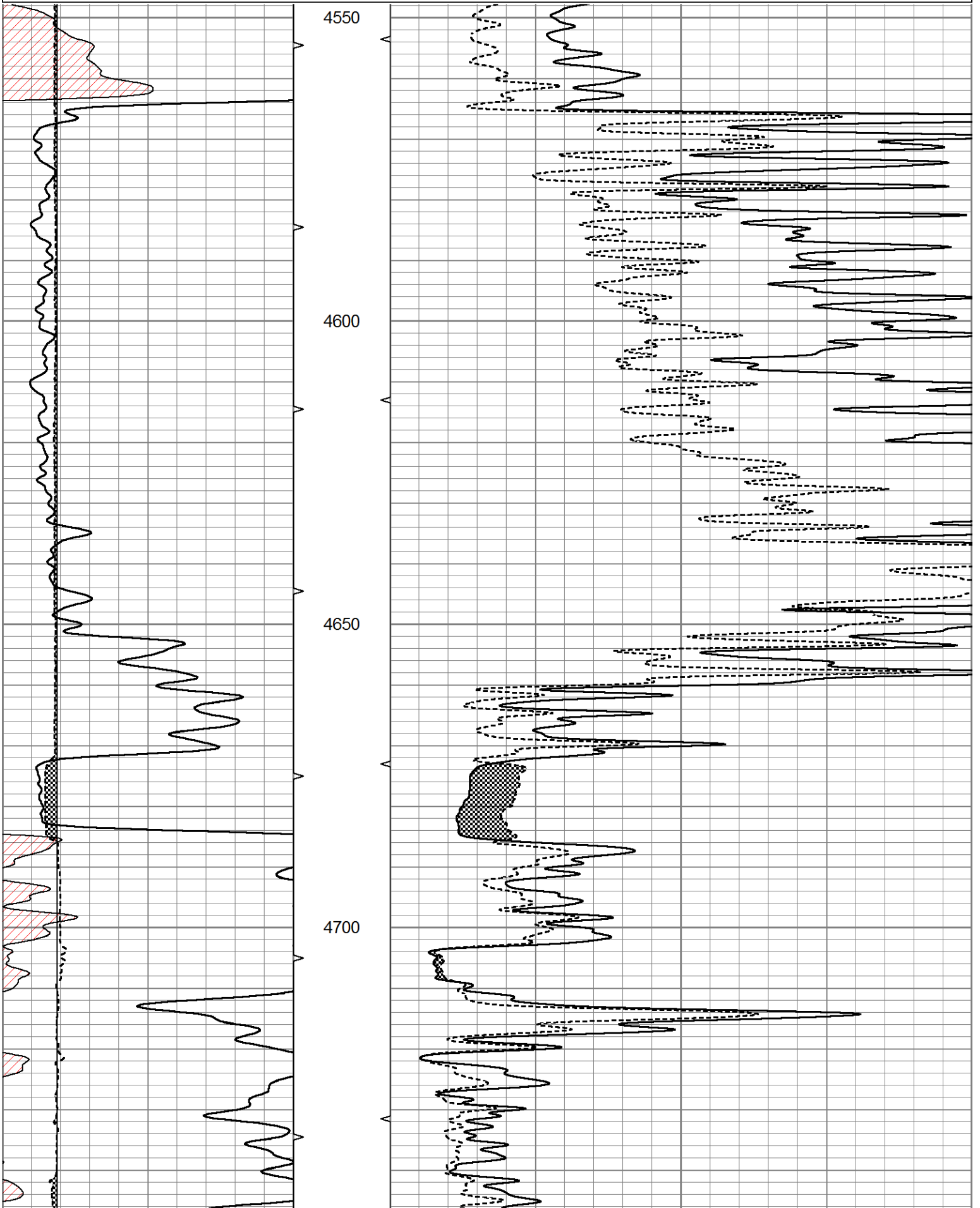


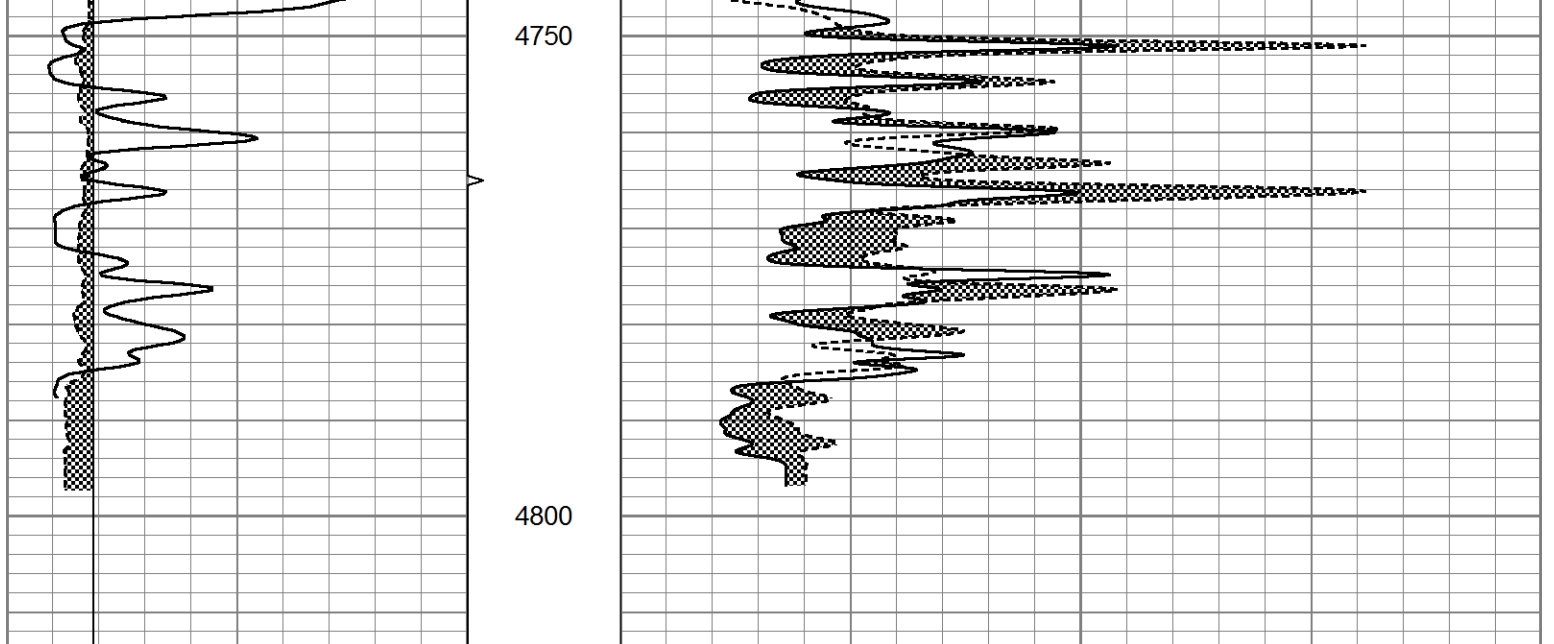


REPEAT SECTION

Database File 6925pe.db
 Dataset Pathname pass5.1
 Presentation Format micro
 Dataset Creation Tue Sep 13 16:07:03 2022
 Charted by Depth in Feet scaled 1:240

0	GR (GAPI)	150	ABHV	0	MEL20 (Ohm-m)	40
6	MELCAL (in)	16	10 (ft3)	0 0	MEL15 (Ohm-m)	40
			ABHV			
			0 (ft3) 10			





0	GR (GAPI)	150	ABHV	0	MEL20 (Ohm-m)	40
6	MELCAL (in)	16	10 (ft3)	0	MEL15 (Ohm-m)	40
			ABHV			
			0 (ft3)	10		

Calibration Report	
Database File	6925pe.db
Dataset Pathname	pass6.4
Dataset Creation	Tue Sep 13 16:02:34 2022

MICRO Calibration Report

Serial Number:	070910
Tool Model:	ProbeN
Performed:	Tue Sep 13 14:14:39 2022

Caliper Calibration:	Gain=4.706	Offset=0.471
	Low Cal	High Cal
References	8.000	16.000
Readings	1.600	3.300

1.5" Calibration:	Gain=38.000	Offset=0.000
	Low Cal	High Cal
References	0.000	20.000
Readings	0.000	1.216

2" Calibration:	Gain=60.000	Offset=-0.500
	Low Cal	High Cal
References	0.000	20.000
Readings	0.002	1.053

Gamma Ray Calibration Report

Serial Number:	070558
Tool Model:	OPEN_GR
Performed:	Tue Sep 13 14:40:01 2022

Calibrator Value:	1.0	GAPI
Background Reading:	0.0	cps
Calibrator Reading:	1.0	cps

Sensitivity:

0.3000

GAPI/cps