



FRAC - FINDER  
LOG

Company INDIAN OIL COMPANY, INC.  
Well BANKS NORTH #3  
Field AMBER CREEK  
County BARBER State KANSAS

Location: API #: 15-007-24440-0000  
1512' FNL & 2180' FEL  
NE - NW - SW - SE  
Permanent Datum GROUND LEVEL Elevation 1673  
Log Measured From KELLY BUSHING 12' A.G.L.  
Drilling Measured From KELLY BUSHING  
SEC 36 TWP 30S RGE 12W  
Other Services  
CDL/CNL/PE  
DIL/MEL/SON  
Elevation  
K.B. 1681  
D.F. 1679  
G.L. 1673

Date	9/13/22
Run Number	TWO
Depth Driller	4810
Depth Logger	4808
Bottom Logged Interval	4800
Top Log Interval	2500
Casing Driller	8 5/8"@305'
Casing Logger	305
Bit Size	7 7/8"
Type Fluid in Hole	CHEMICAL MUD
Density / Viscosity	9.3/44
pH / Fluid Loss	10.5/9.6
Source of Sample	FLOWLINE
Rm @ Meas. Temp	.750@82F
Rmf @ Meas. Temp	.563@82F
Rmc @ Meas. Temp	.900@82F
Source of Rmf / Rmc	MEASUREMENT
Rm @ BHT	.500@123F
Time Circulation Stopped	5 HOURS
Time Logger on Bottom	2.45 P.M.
Maximum Recorded Temperature	123F
Equipment Number	922339
Location	HAYS, KANSAS
Recorded By	JEFF LUEBBERS
Witnessed By	AARON YOUNG
	ANTHONY FARRAR

<<< Fold Here >>>

All interpretations are opinions based on inferences from electrical or other measurements and we cannot and do not guarantee the accuracy or correctness of any interpretation, and we shall not, except in the case of gross or willful negligence on our part, be liable or responsible for any loss, costs, damages, or expenses incurred or sustained by anyone resulting from any interpretation made by any of our officers, agents or employees. These interpretations are also subject to our general terms and conditions set out in our current Price Schedule.

15-007-24440-0000 Comments

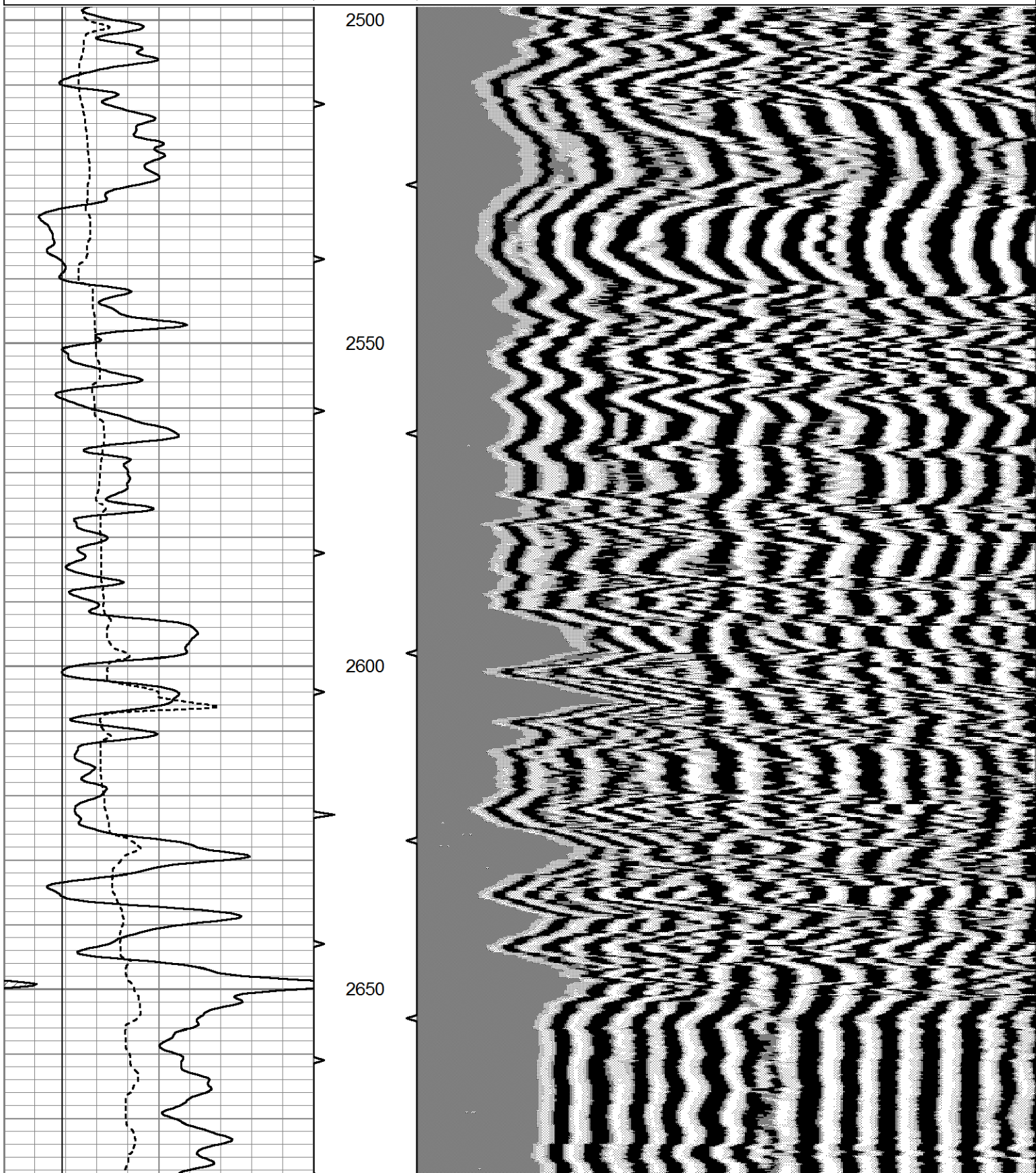
THANK YOU FOR USING ELI WIRELINE HAYS, KANSAS (785) 628-6395  
DIRECTIONS  
SAWYER, KS., S. ON HWY 281 TO "RESORT RD."(99 SPRINGS SIGN), 1 1/2 W., TO GREEN GATES,  
S. INTO, FOLLOW LEASE RD.

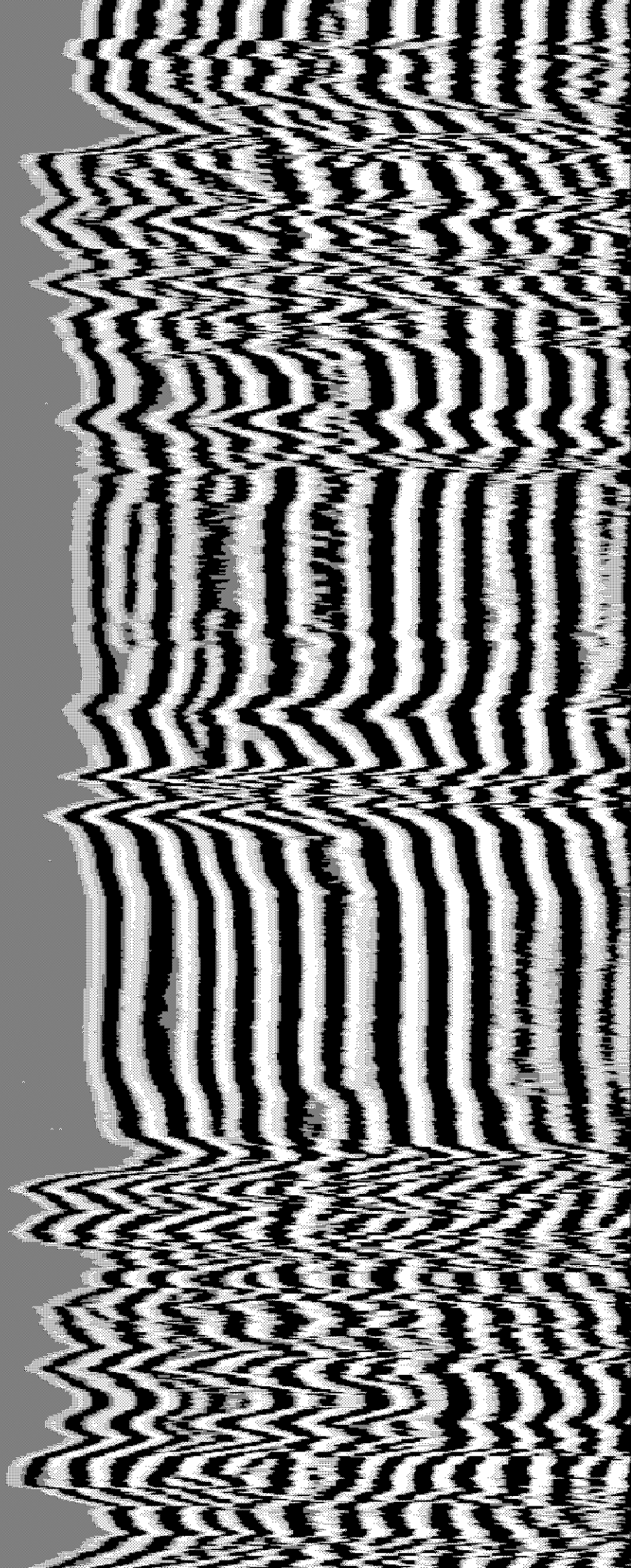
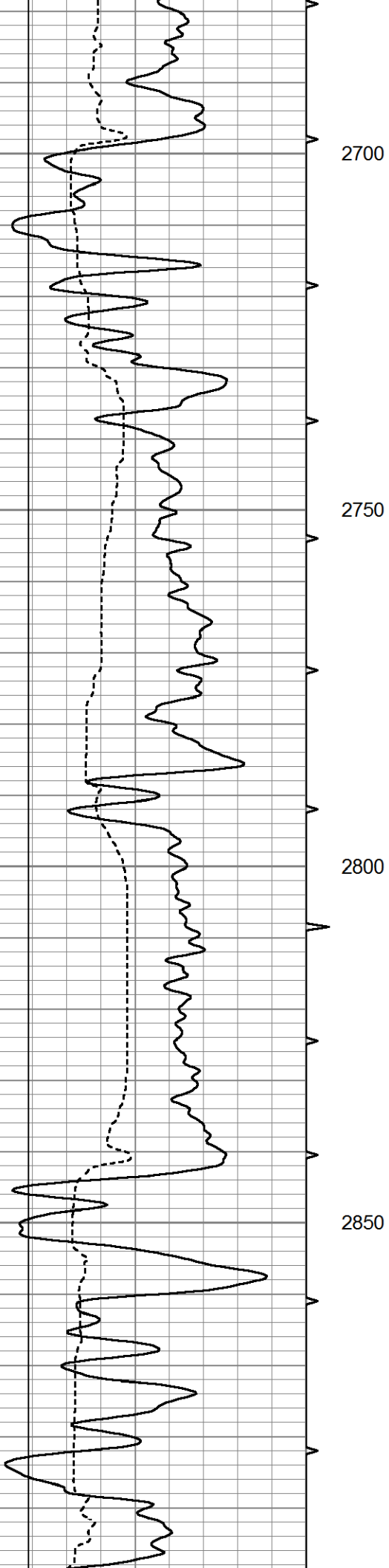


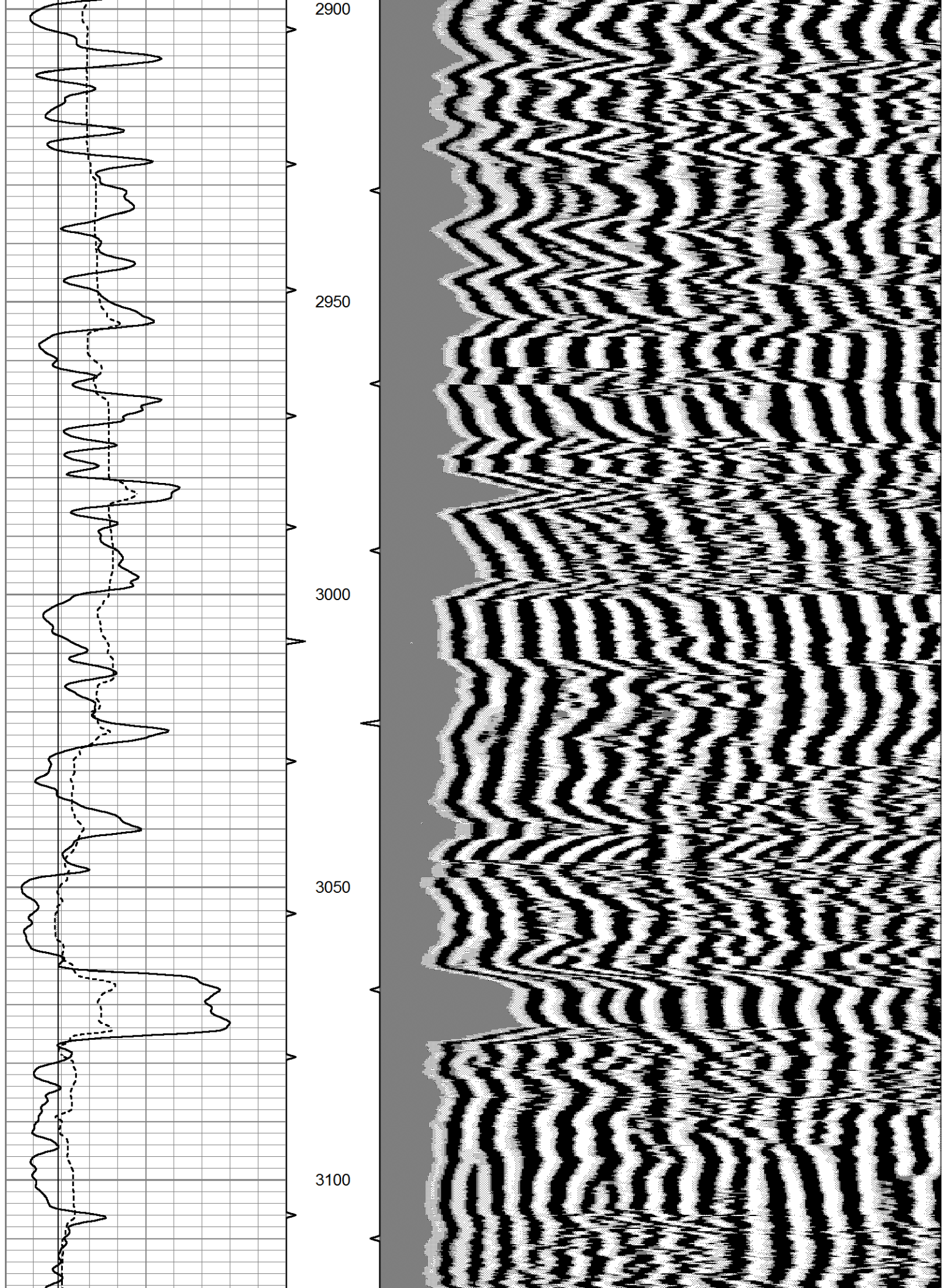
MAIN SECTION

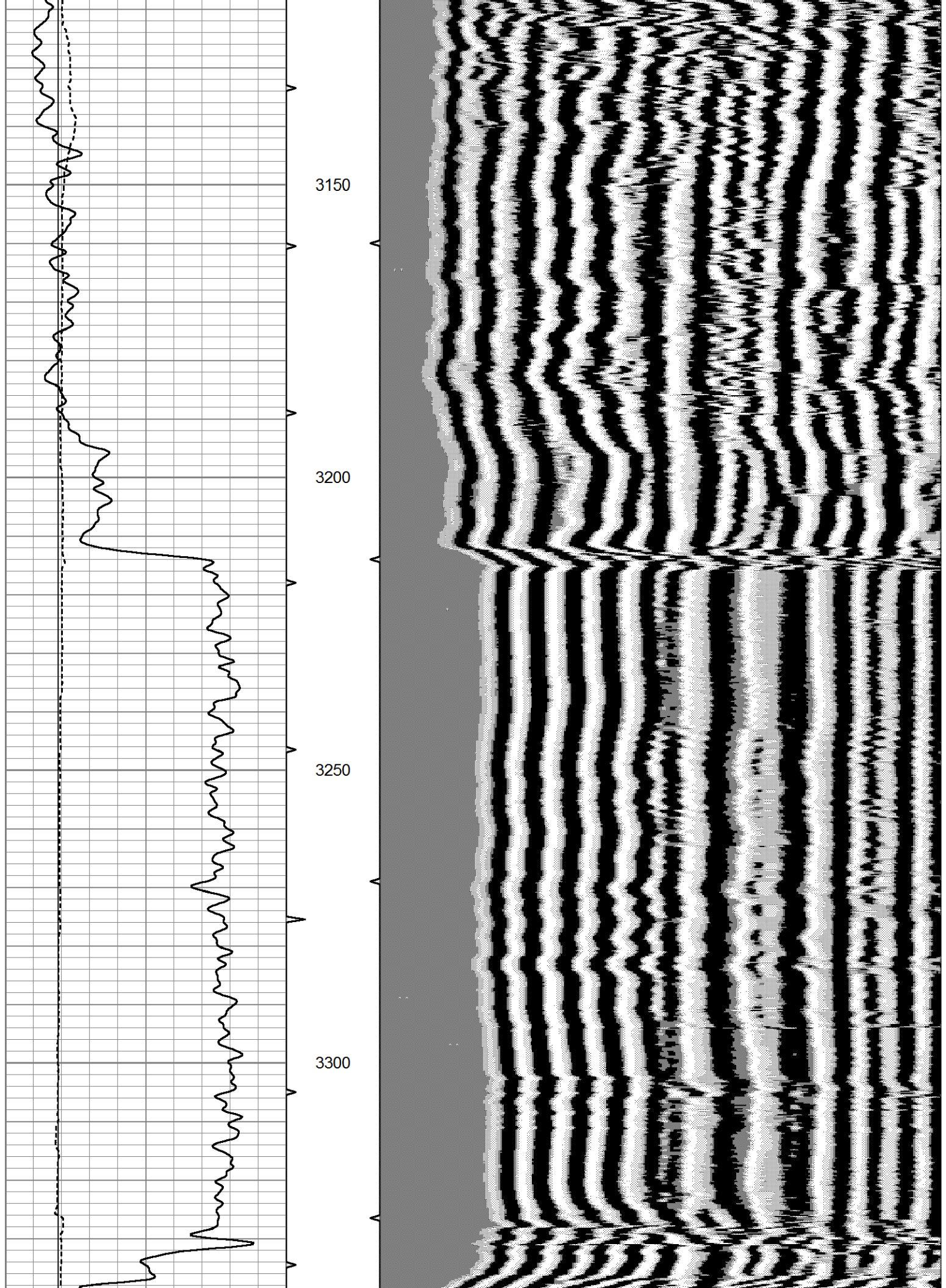
Database File 6925pe.db  
 Dataset Pathname pass6.4  
 Presentation Format frac  
 Dataset Creation Tue Sep 13 16:02:34 2022  
 Charted by Depth in Feet scaled 1:240

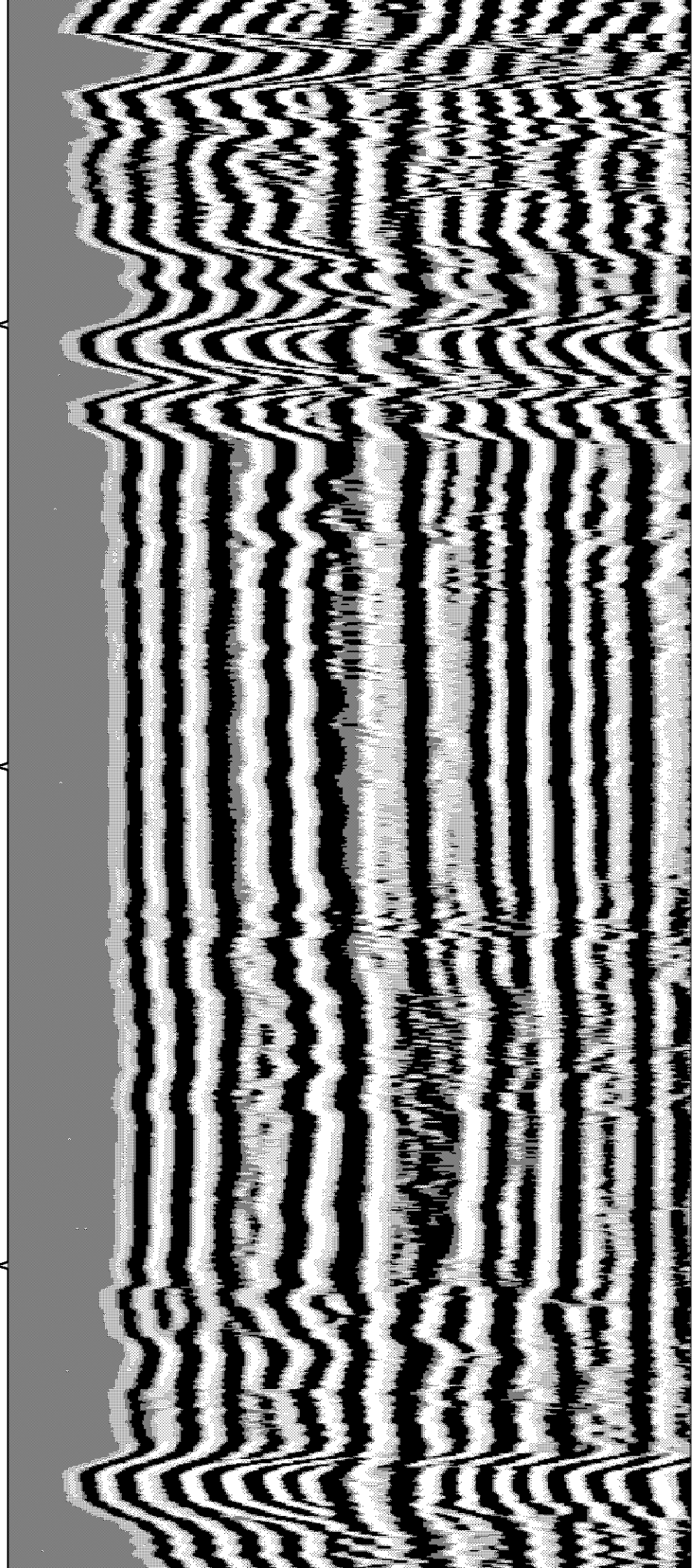
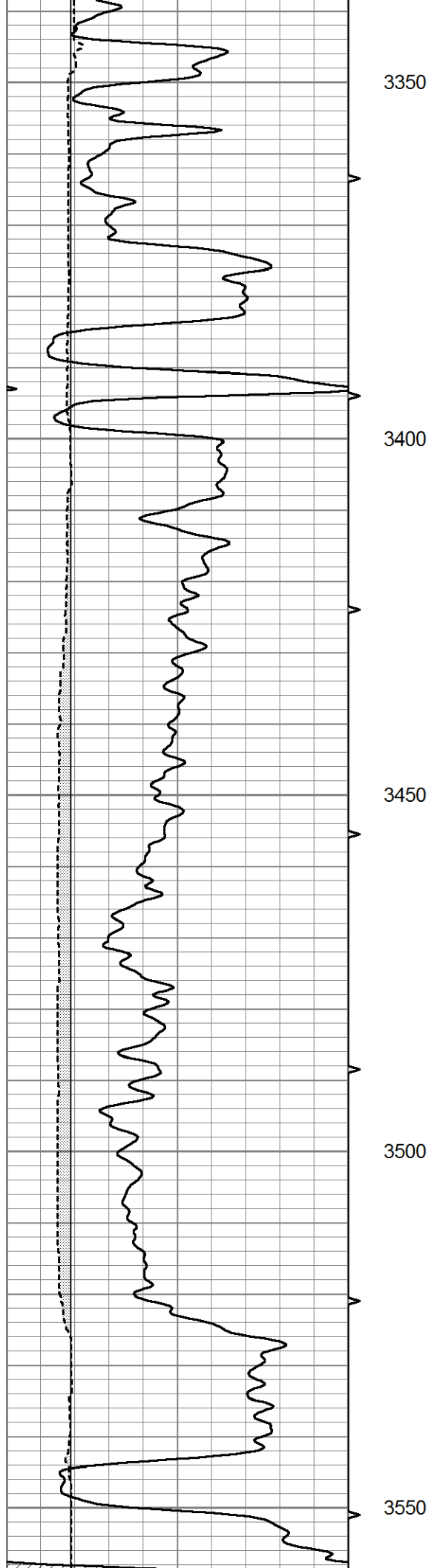
0	GR (GAPI)	150	ABHV	200	WWF1 (usec)	1200
6	BOREID (in)	16	10 (ft3)	0		
6	CALIPER (in)	16	TBHV			
-----			0 (ft3)	10		

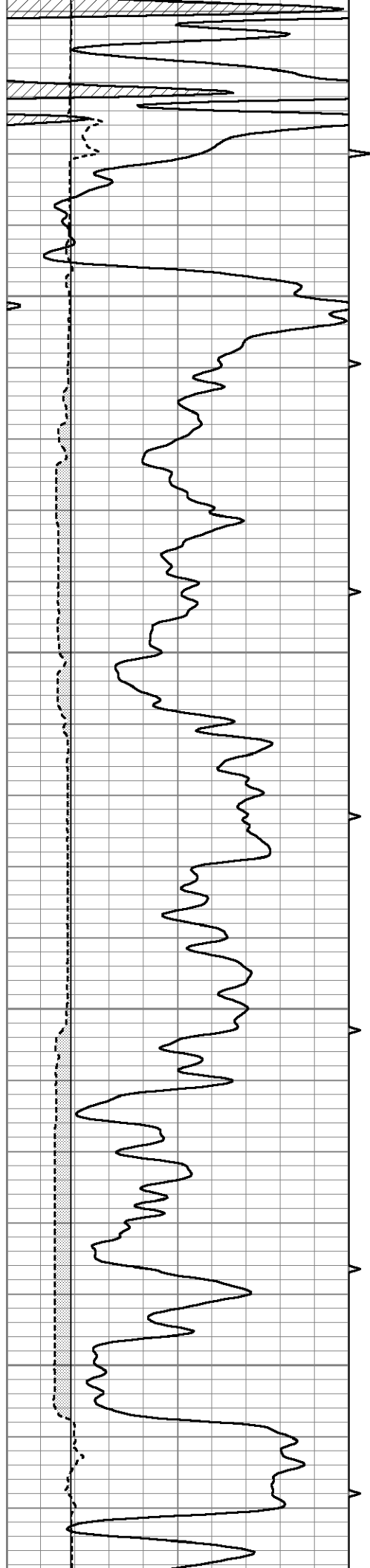










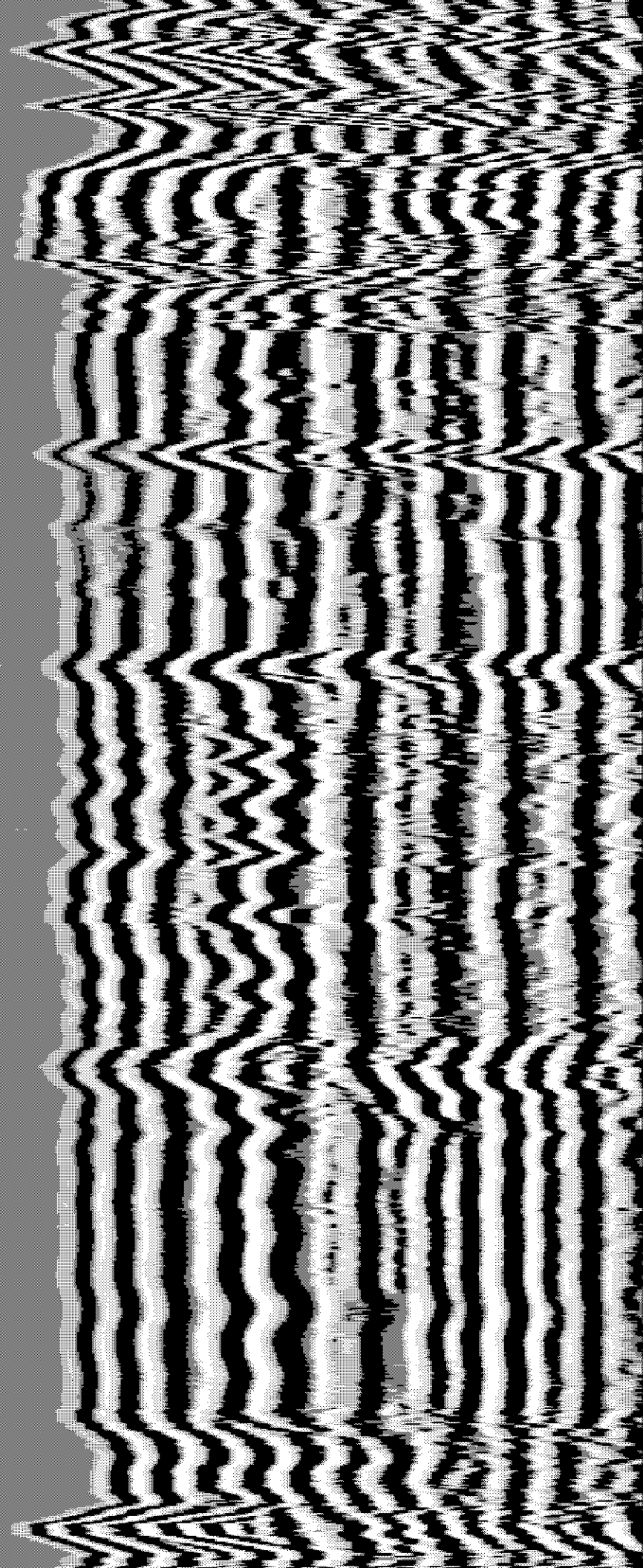


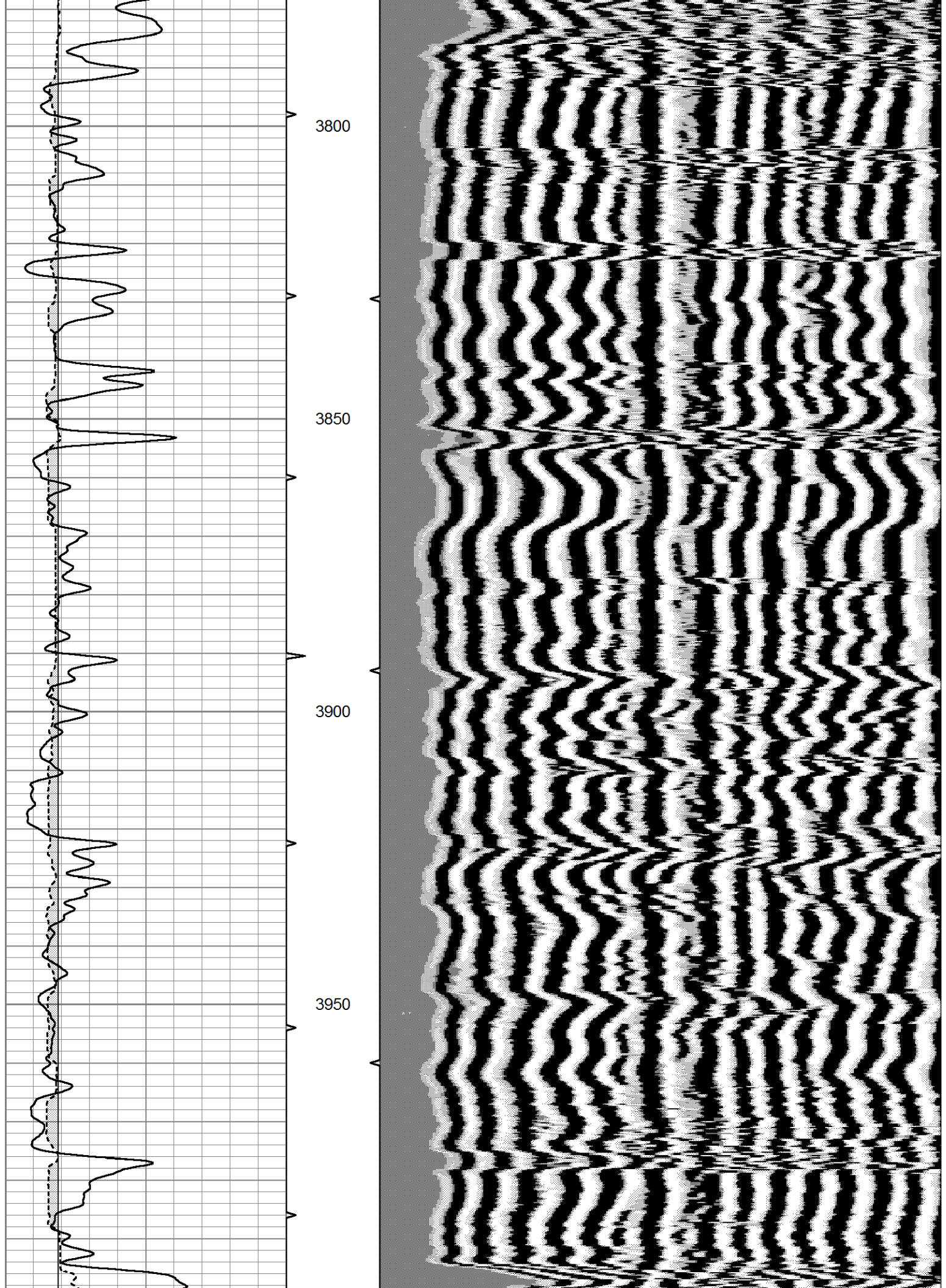
3600

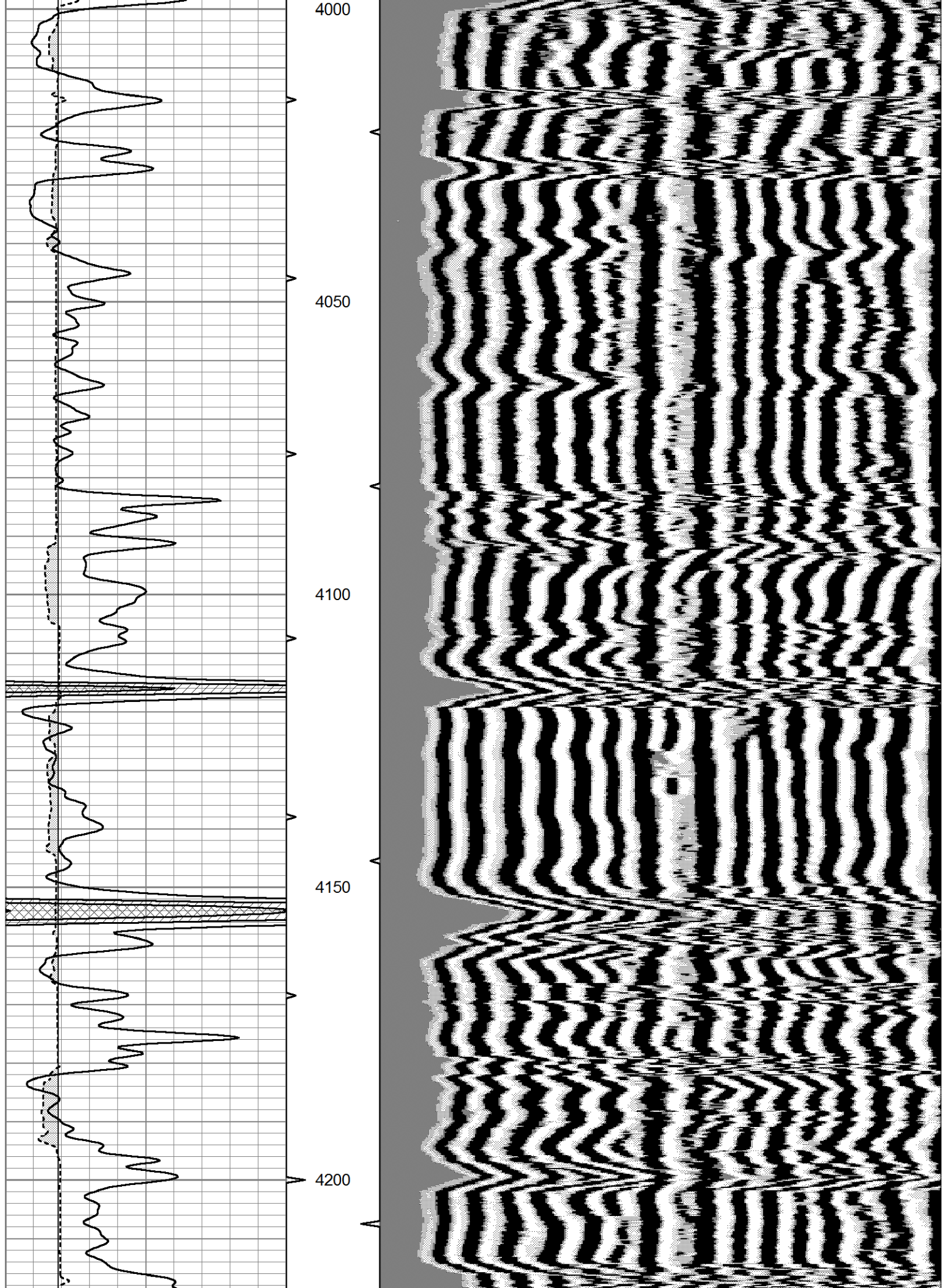
3650

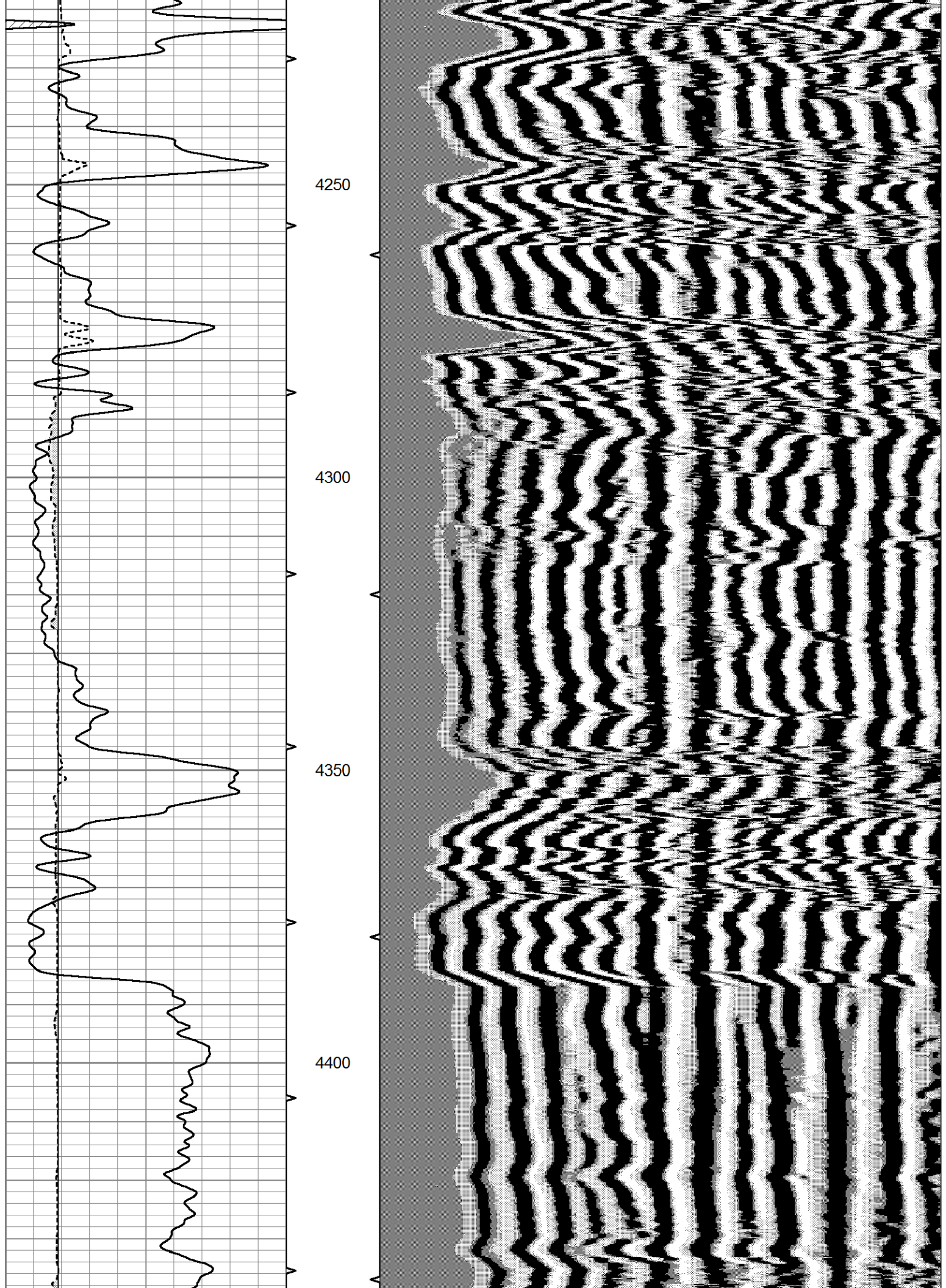
3700

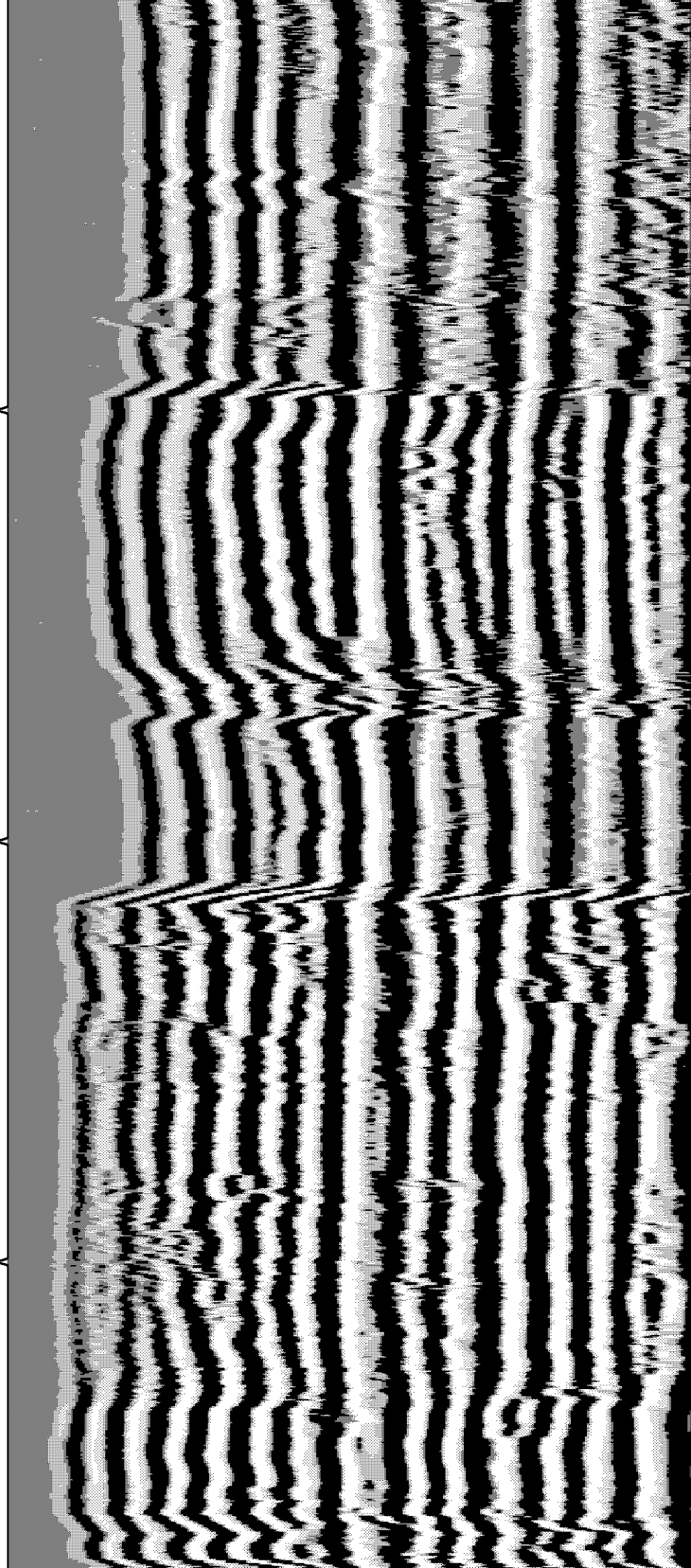
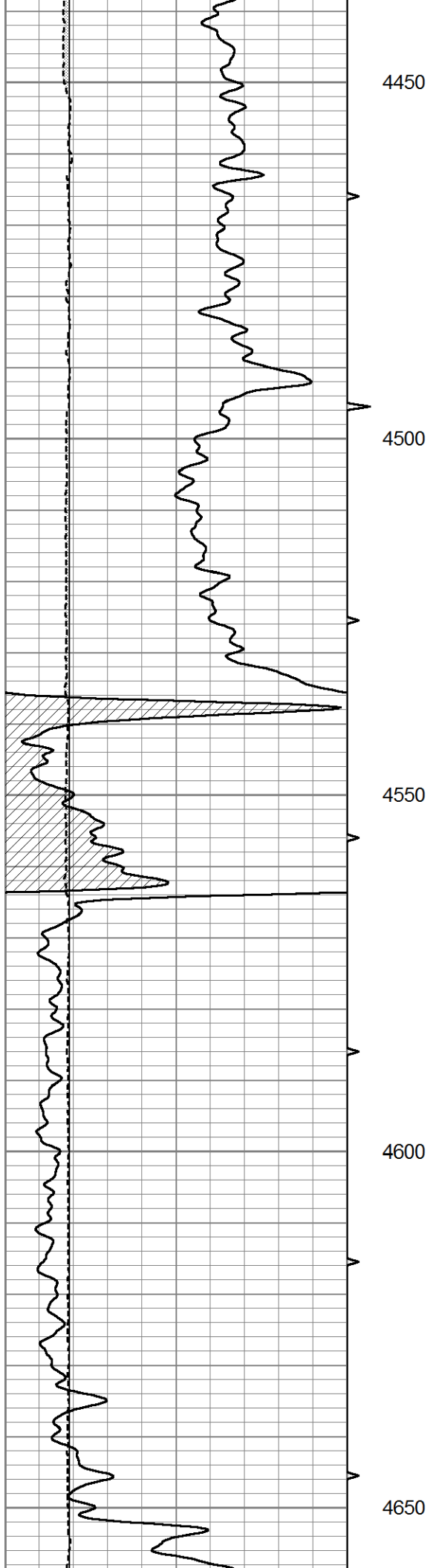
3750

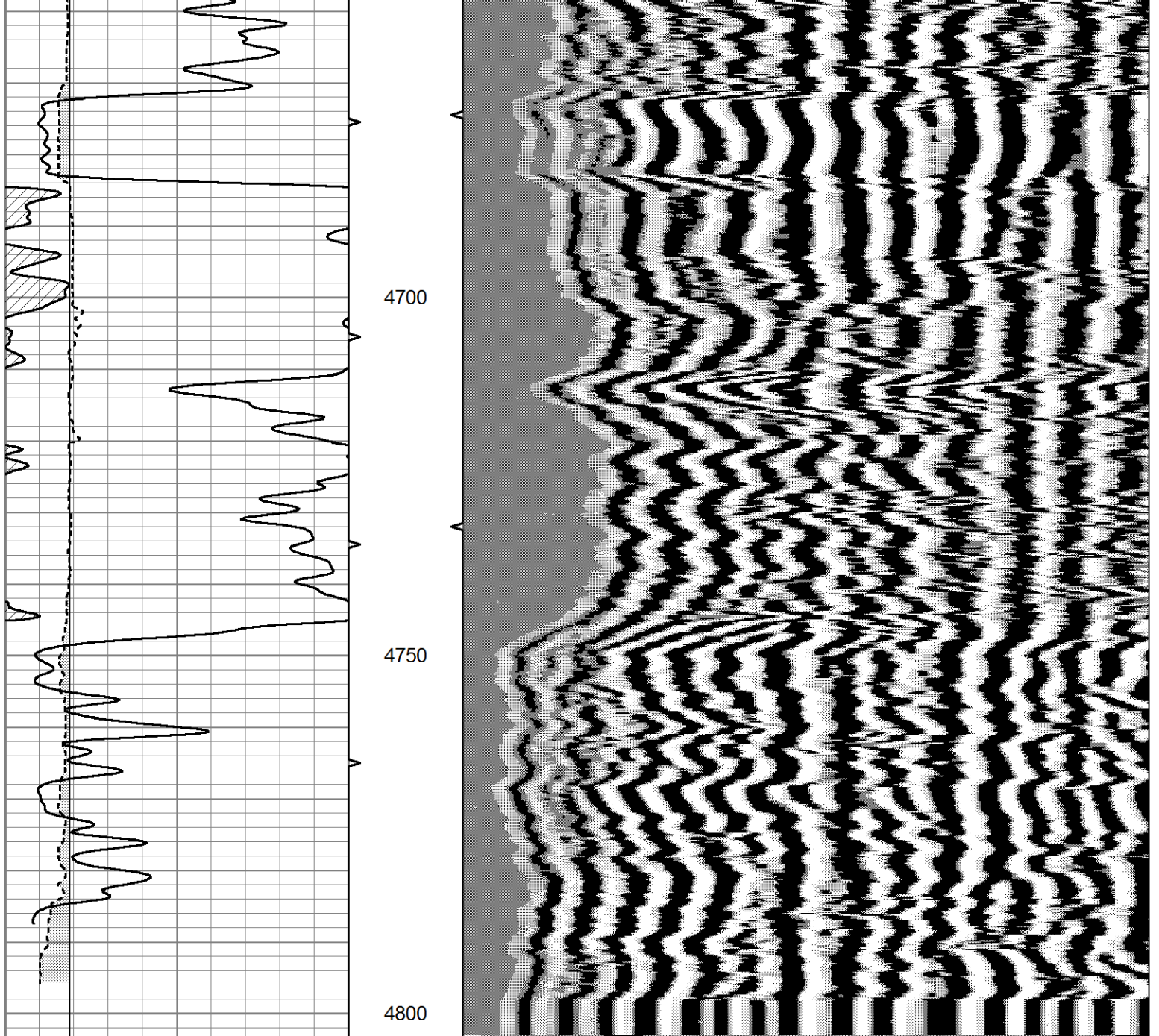












0	GR (GAPI)	150	ABHV	200	WWF1 (usec)	1200
6	BOREID (in)	16	10 (ft3)	0		
6	CALIPER (in)	16	TBHV			
			0 (ft3)	10		