

SONIC  
LOG



Company GRAND MESA OPERATING  
Well PRETTY WOMAN #1-20  
Field BUTTERFIELD - OVERLAND NORTHEAST  
County GOVE State KANSAS

Location: API #: 15-063-22422-0000  
1450' FNL & 529' FEL  
NW - NE - SE - SE  
SEC 20 TWP 14S RGE 20W  
Permanent Datum GROUND LEVEL Elevation 2818  
Log Measured From KELLY BUSHING 11' A.G.L.  
Drilling Measured From KELLY BUSHING

Company GRAND MESA OPERATING  
Well PRETTY WOMAN #1-20  
Field BUTTERFIELD - OVERLAND NORTHEAST  
County GOVE  
State KANSAS

Date	12/4/22
Run Number	TWO
Depth Driller	4571
Depth Logger	4572
Bottom Logged Interval	4564
Top Log Interval	200
Casing Driller	10 3/4"@246'
Casing Logger	246
Bit Size	7 7/8"
Type Fluid in Hole	CHEMICAL MUD
Density / Viscosity	9.2/60
pH / Fluid Loss	10.5/6.4
Source of Sample	FLOWLINE
Rm @ Meas. Temp	2.00@65F
Rmf @ Meas. Temp	1.50@65F
Rmc @ Meas. Temp	2.40@65F
Source of Rmf / Rmc	MEASURED
Rm @ BHT	1.07@120F
Time Circulation Stopped	4 HOURS
Time Logger on Bottom	1:00 A.M.
Maximum Recorded Temperature	120F
Equipment Number	8916
Location	HAYS, KANSAS
Recorded By	JEFF LUEBBERS
Witnessed By	GARET DINKEL

Other Services  
CDL/CNL/PE  
DIL/MEEL  
Elevation  
K.B. 2829  
D.F. 2827  
G.L. 2818

<<< Fold Here >>>

All interpretations are opinions based on inferences from electrical or other measurements and we cannot and do not guarantee the accuracy or correctness of any interpretation, and we shall not, except in the case of gross or willful negligence on our part, be liable or responsible for any loss, costs, damages, or expenses incurred or sustained by anyone resulting from any interpretation made by any of our officers, agents or employees. These interpretations are also subject to our general terms and conditions set out in our current Price Schedule.

Comments

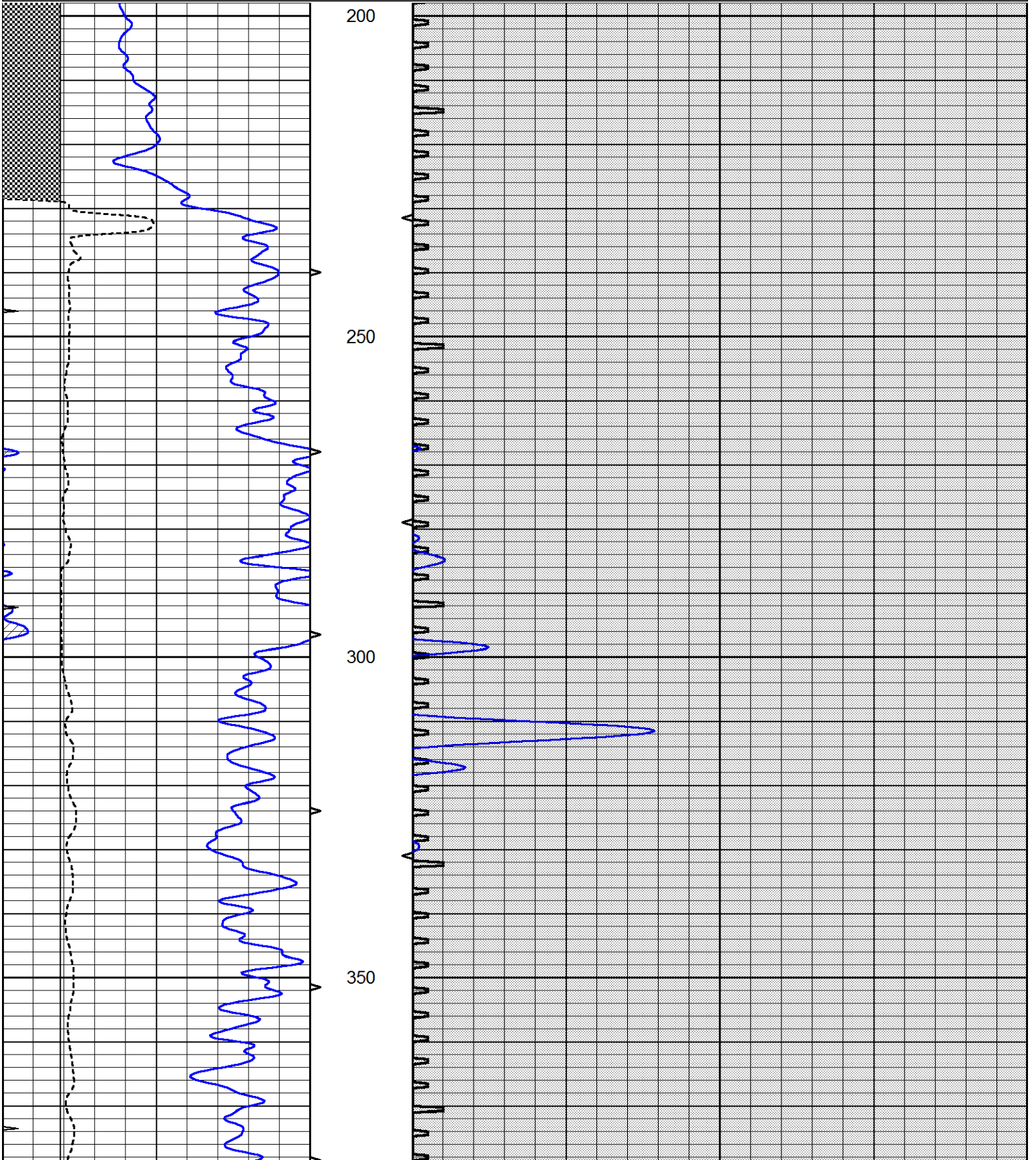
THANK YOU FOR USING ELI WIRELINE, HAYS, KS. (785) 628-6395  
DIRECTIONS:  
GOVE, KS., 11S. ON HWY 23 TO "RD. I", (COBERLY SIGN) 8 1/4W., 1N. INTO

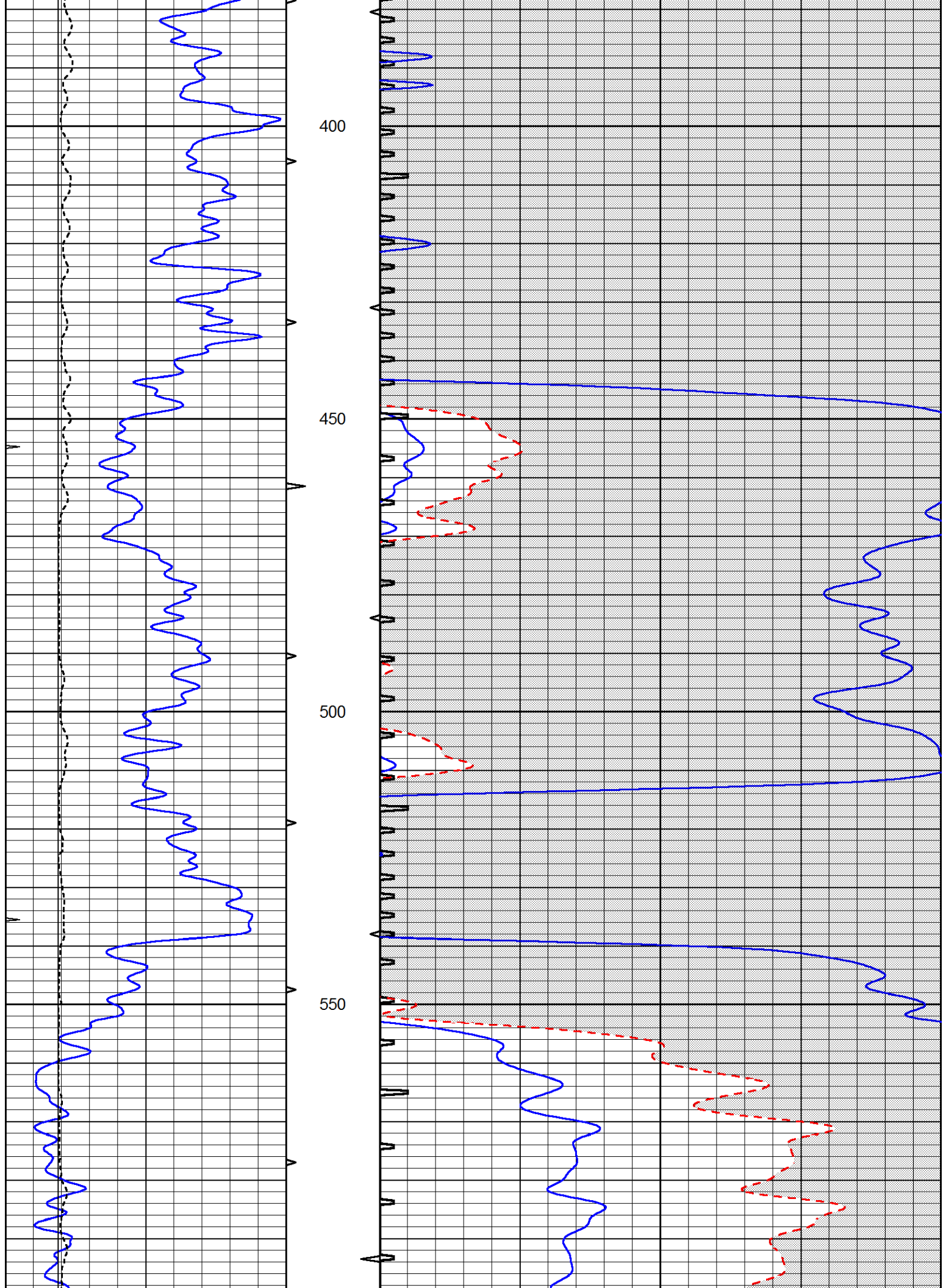


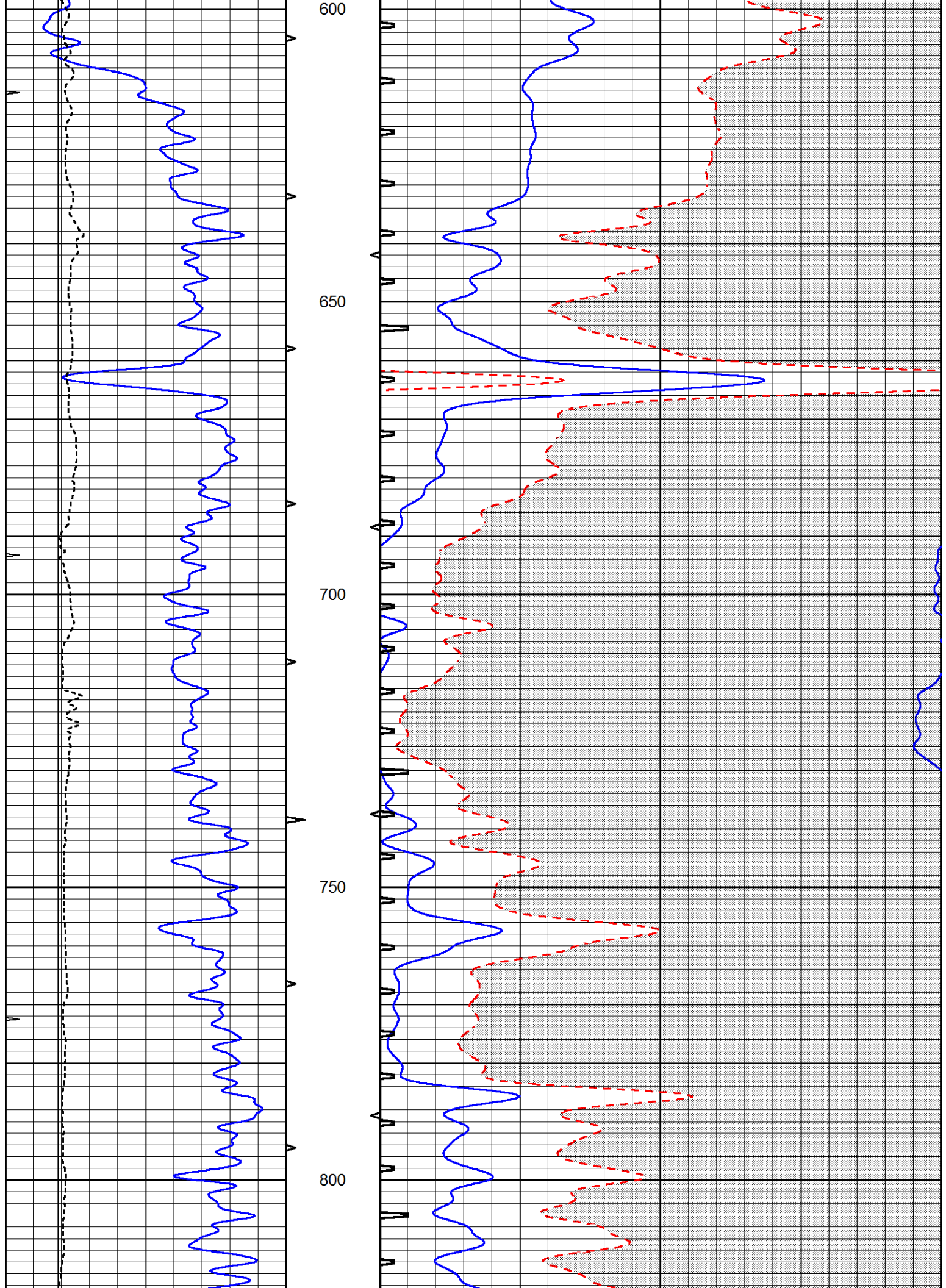
MAIN SECTION

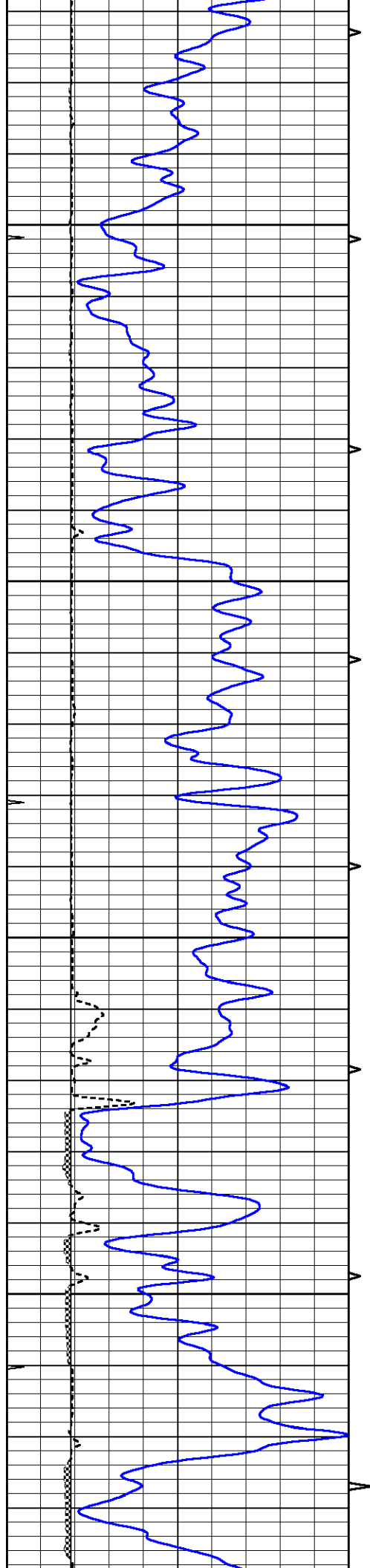
Database File 6809pe.db  
 Dataset Pathname pass6.5  
 Presentation Format \_slt  
 Dataset Creation Sun Dec 04 03:02:34 2022  
 Charted by Depth in Feet scaled 1:240

0	GAMMA RAY (GAPI)	150	ABHV	140	DELTA TIME (usec/ft)	40
0	MINMK	20	10 (ft3) 0	30	SONIC POROSITY (pu)	-10
6	MELCAL (in)	16	TBHV	0	ITT (msec)	20
			0 (ft3) 10			







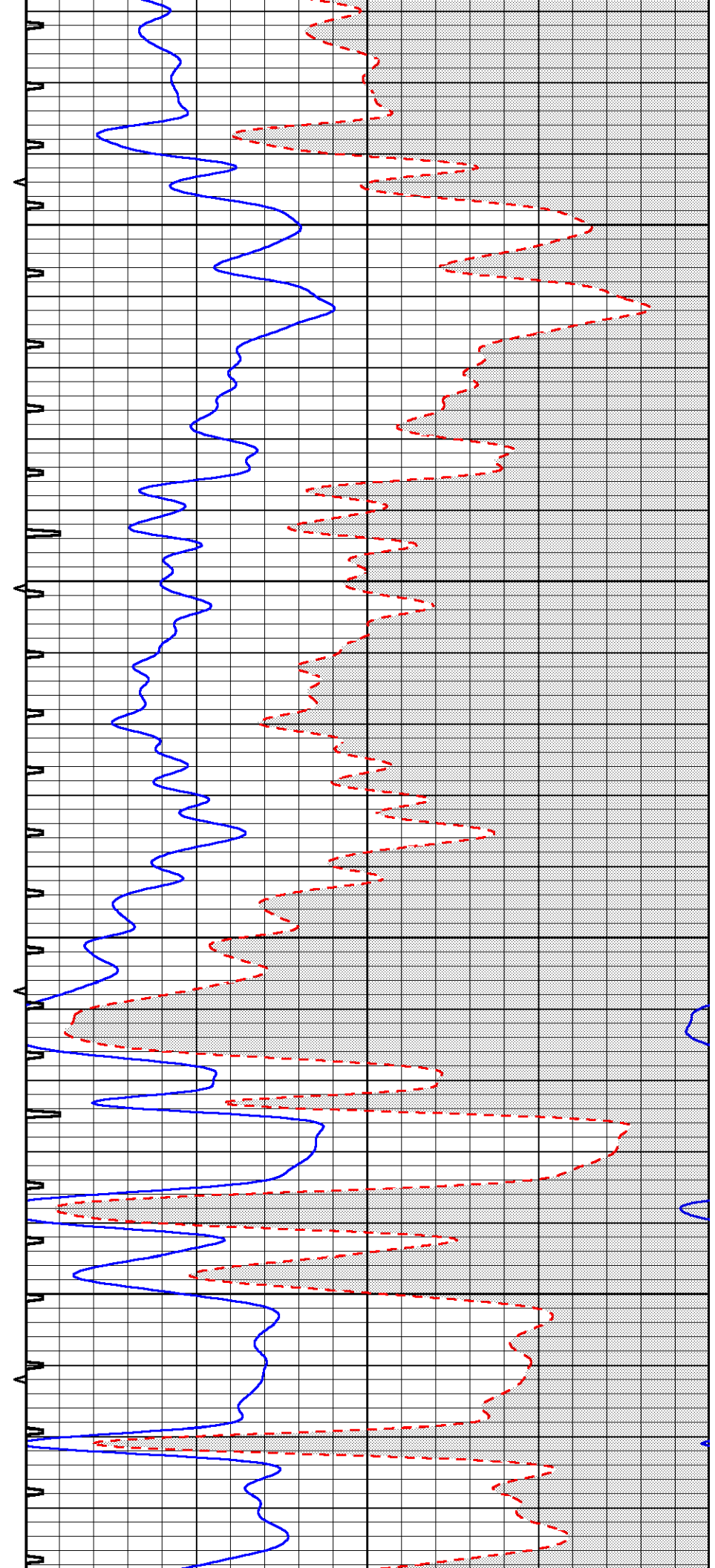


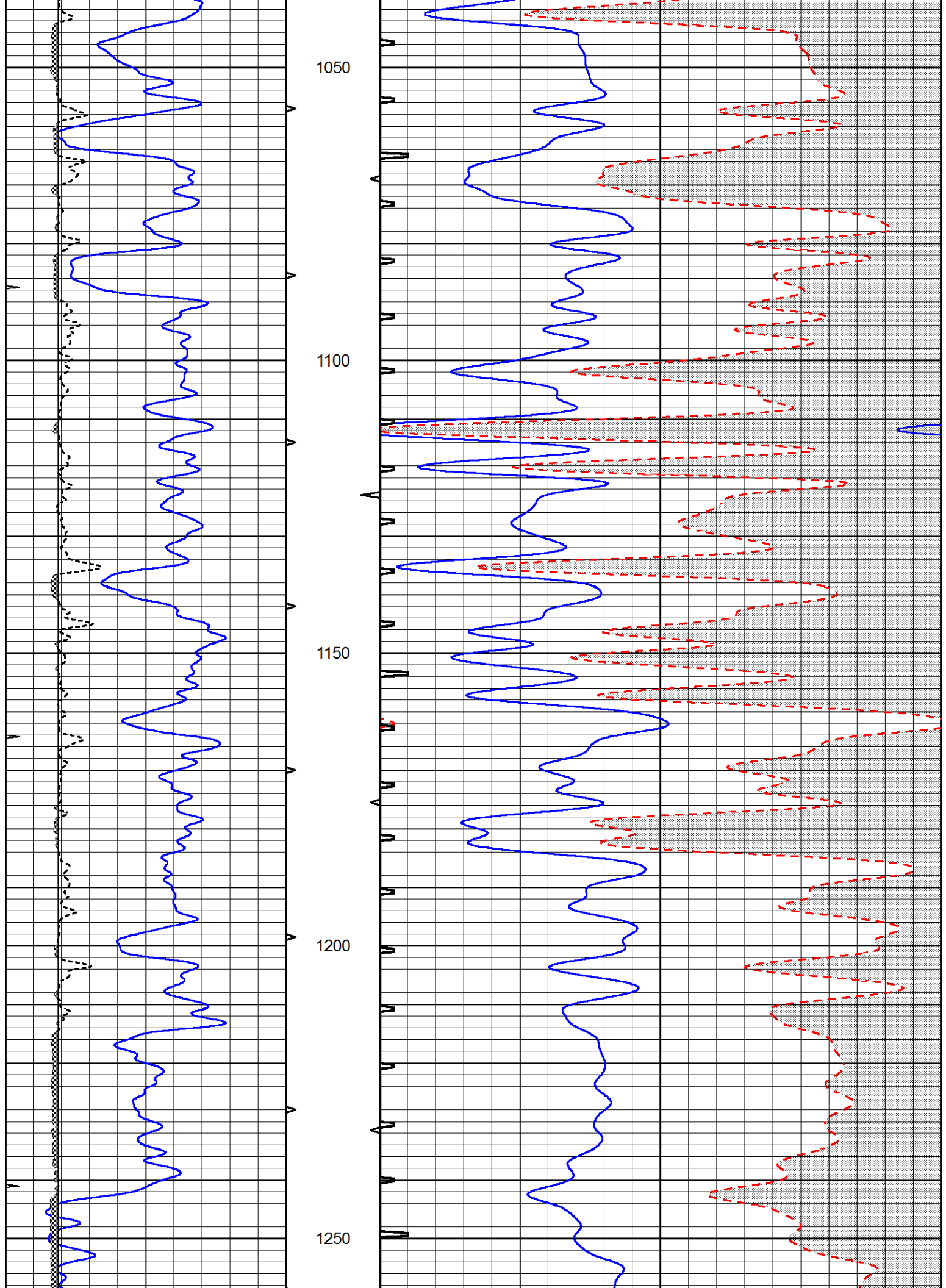
850

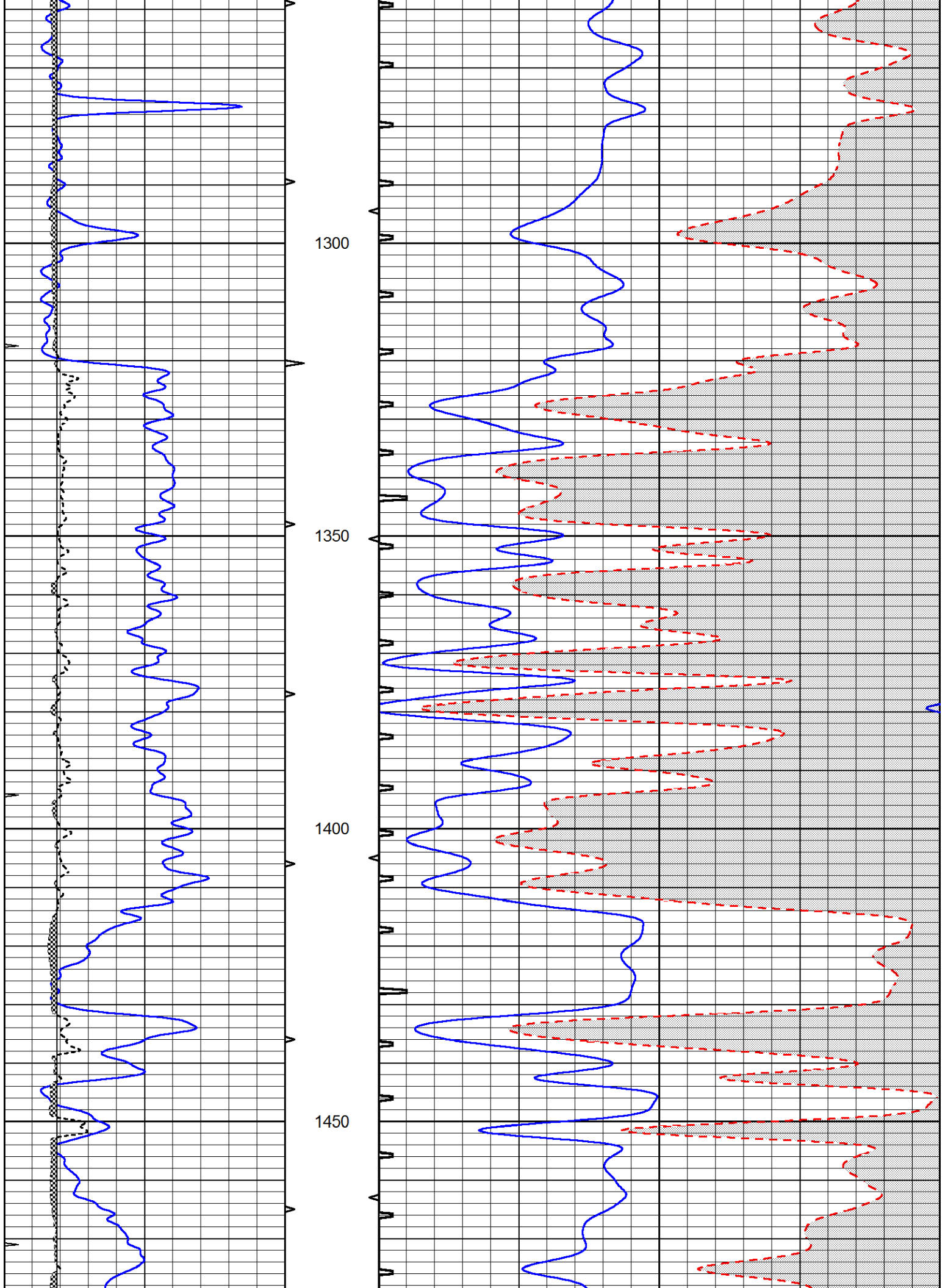
900

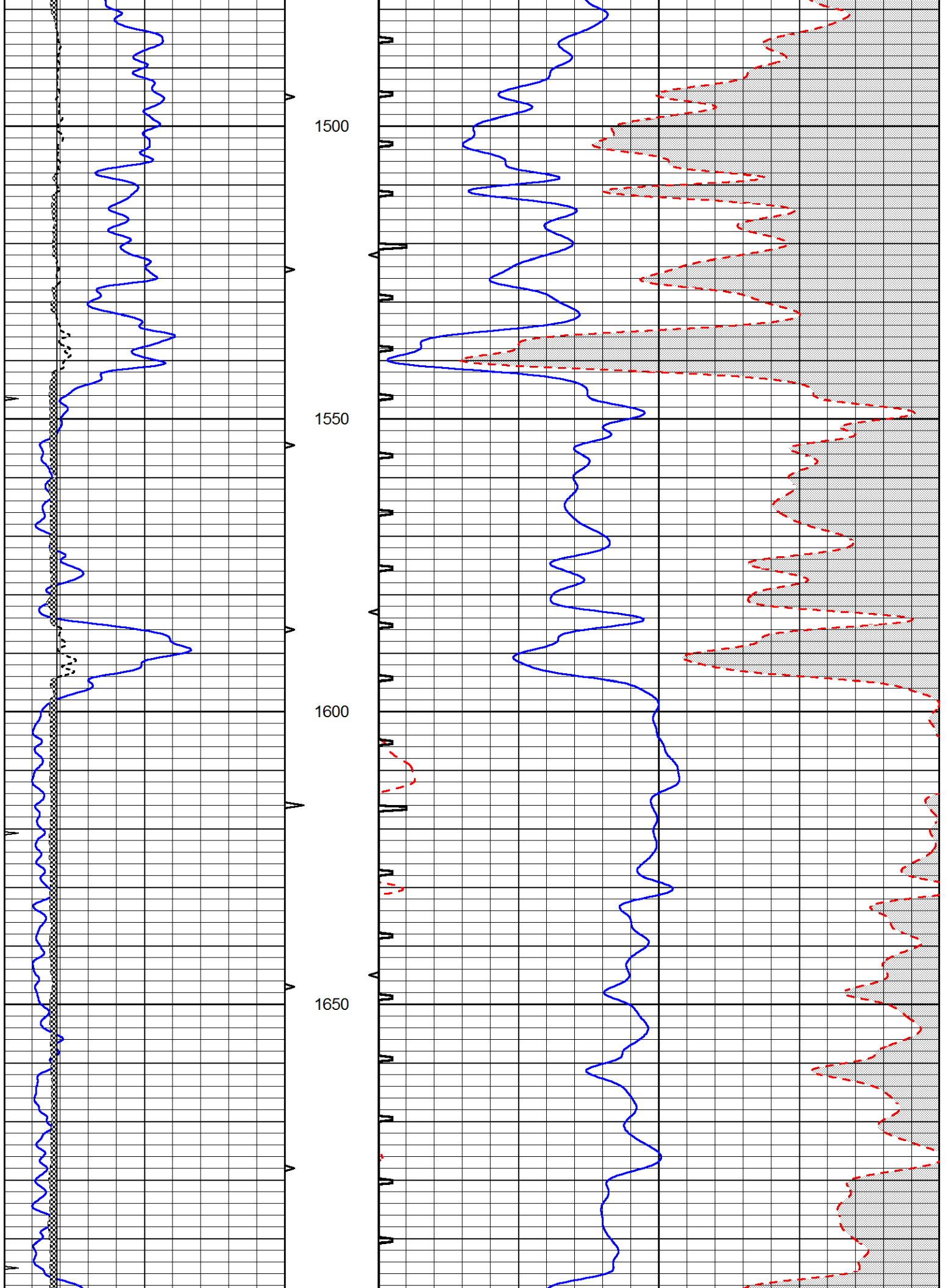
950

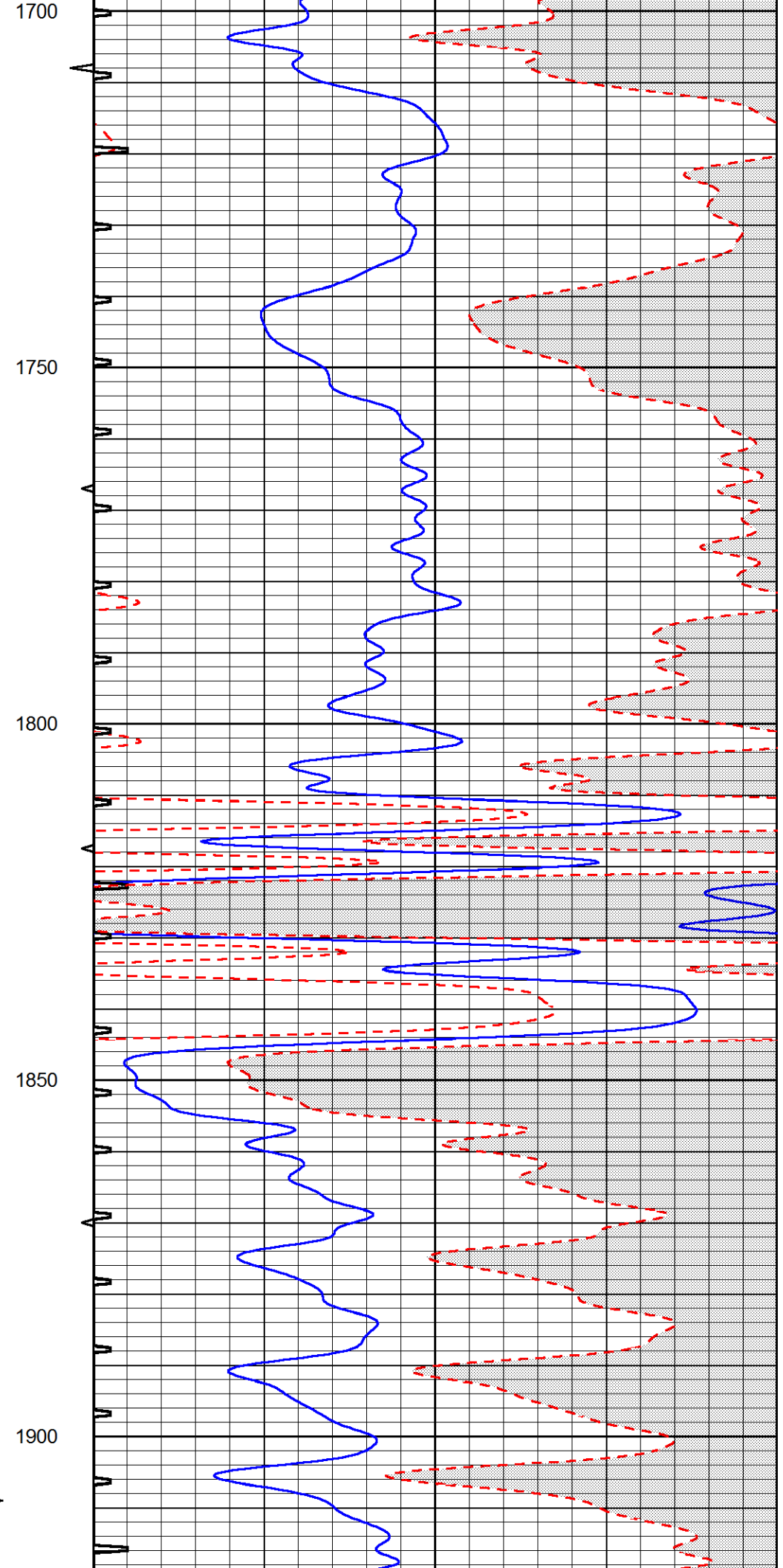
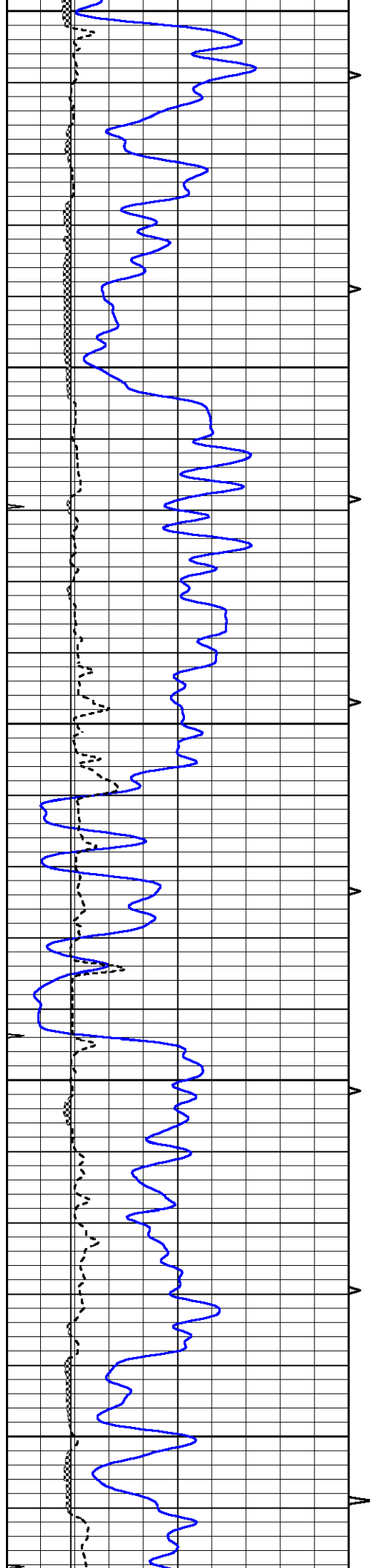
1000

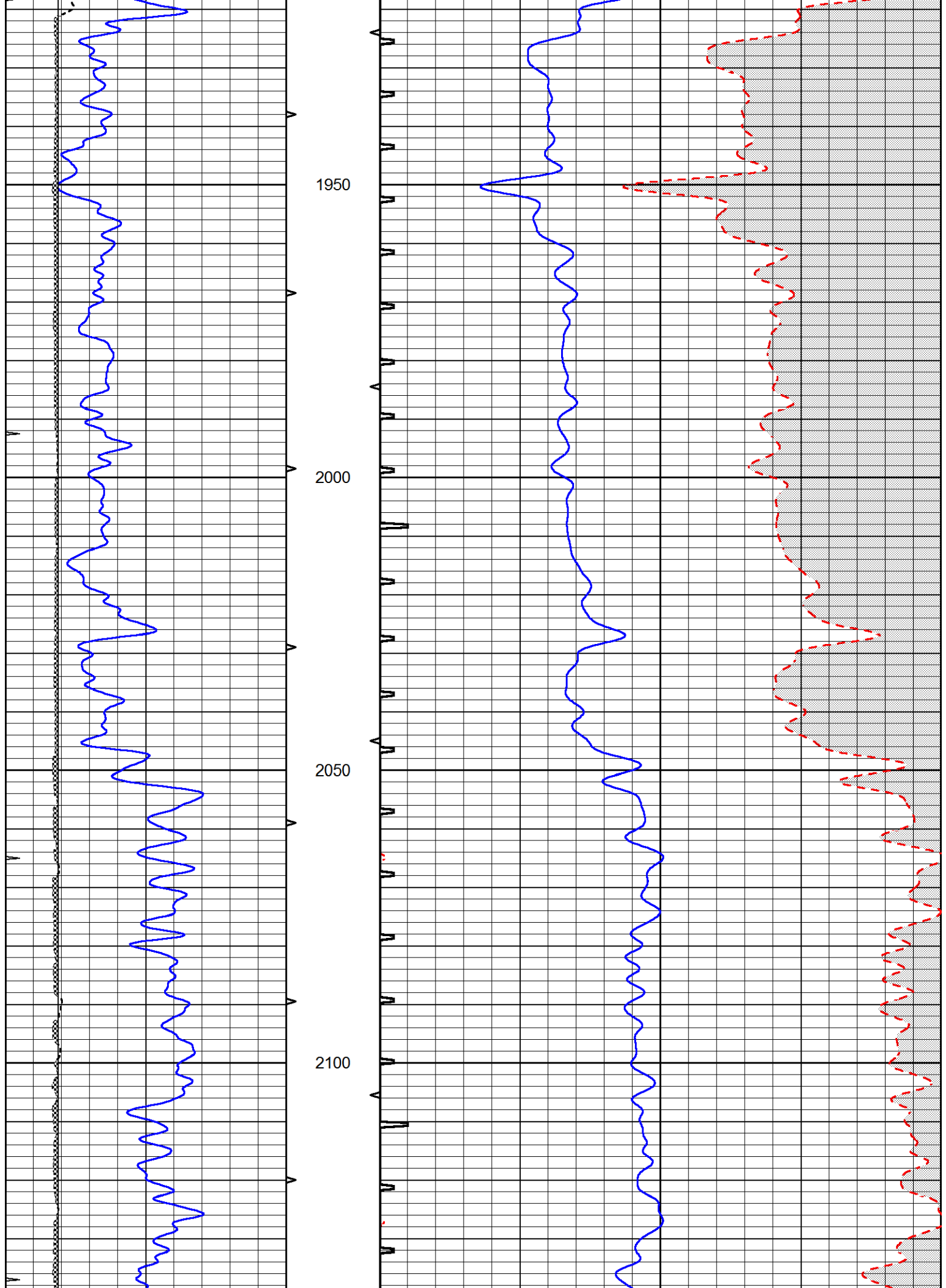


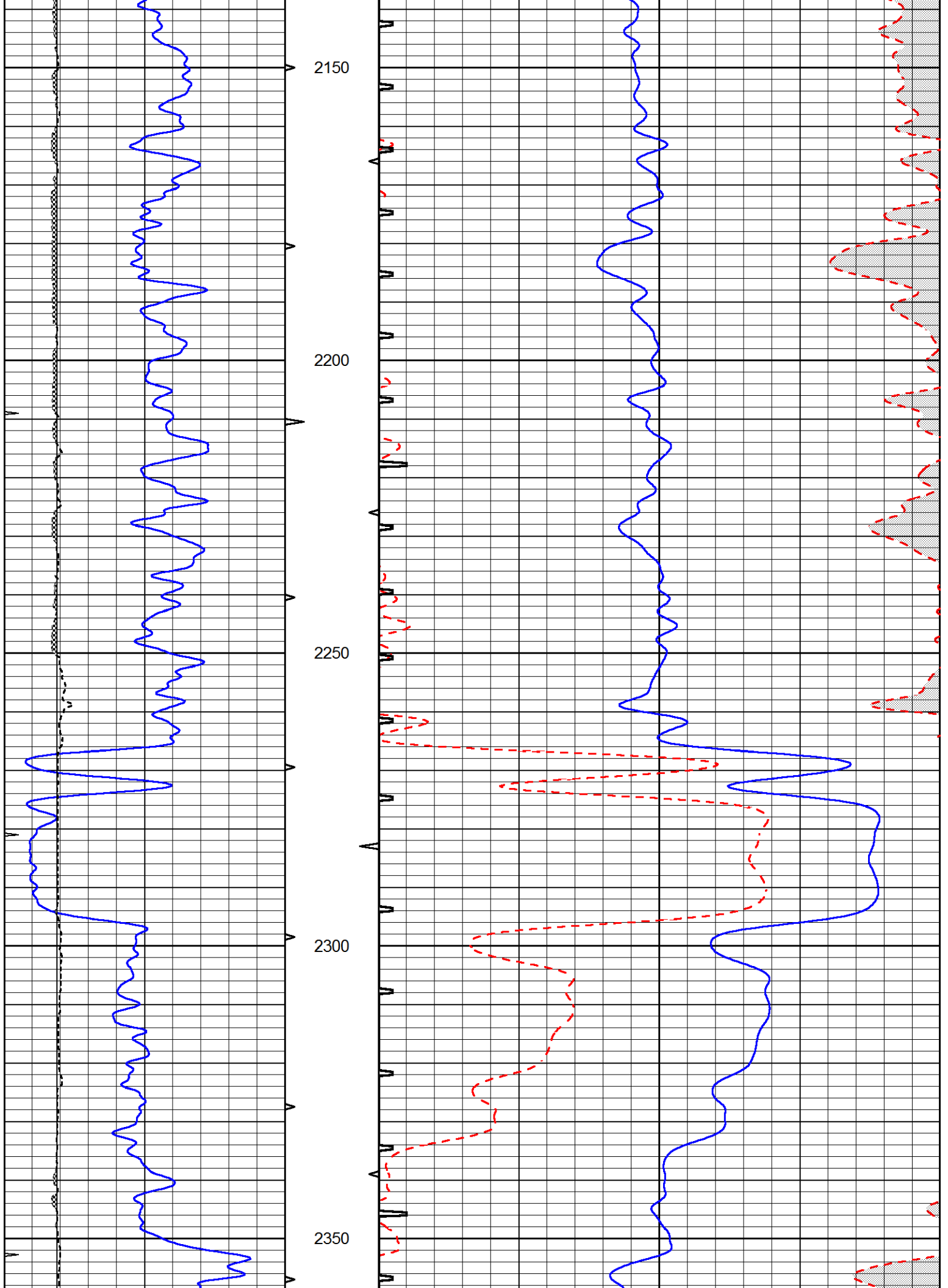


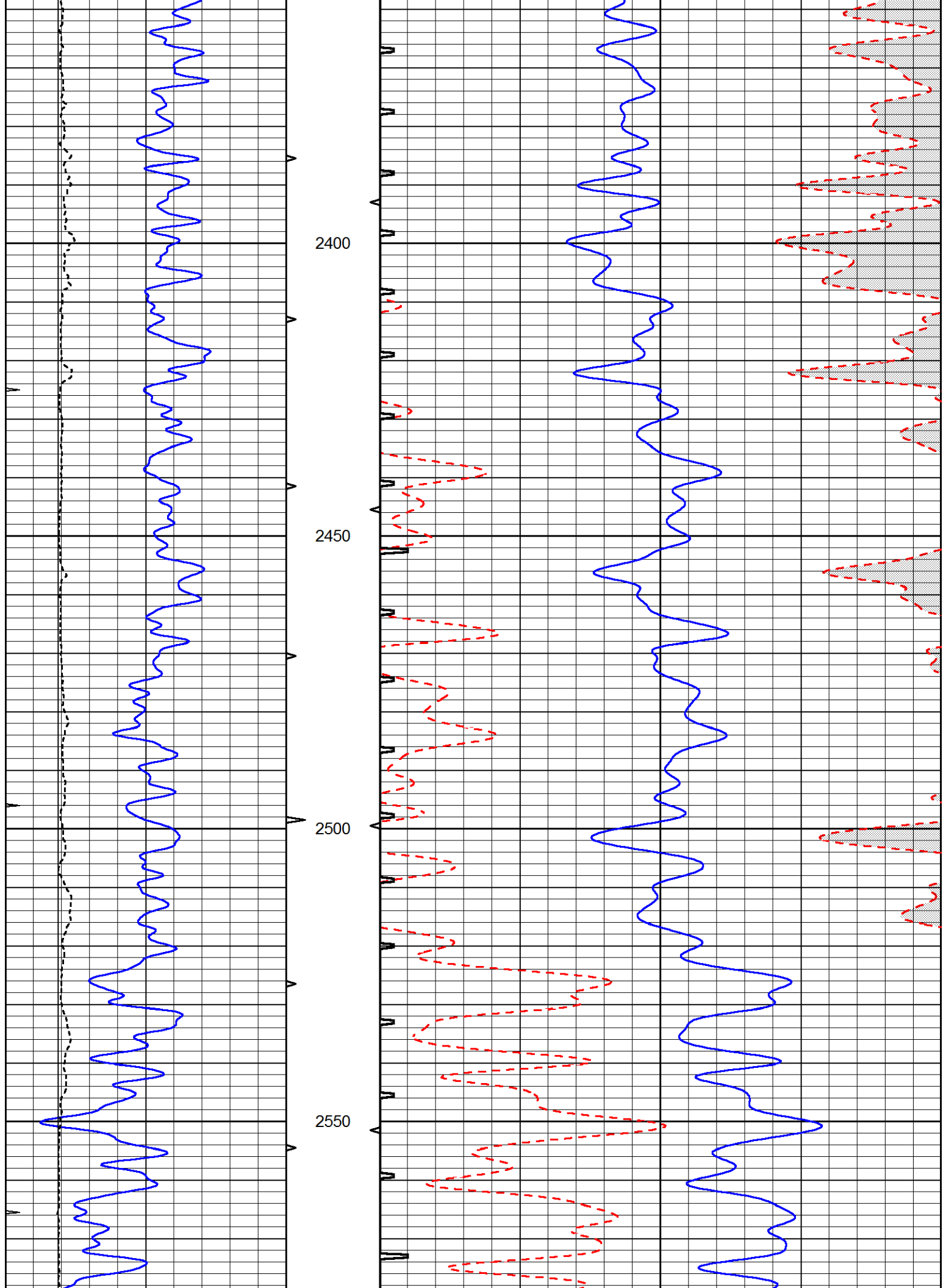


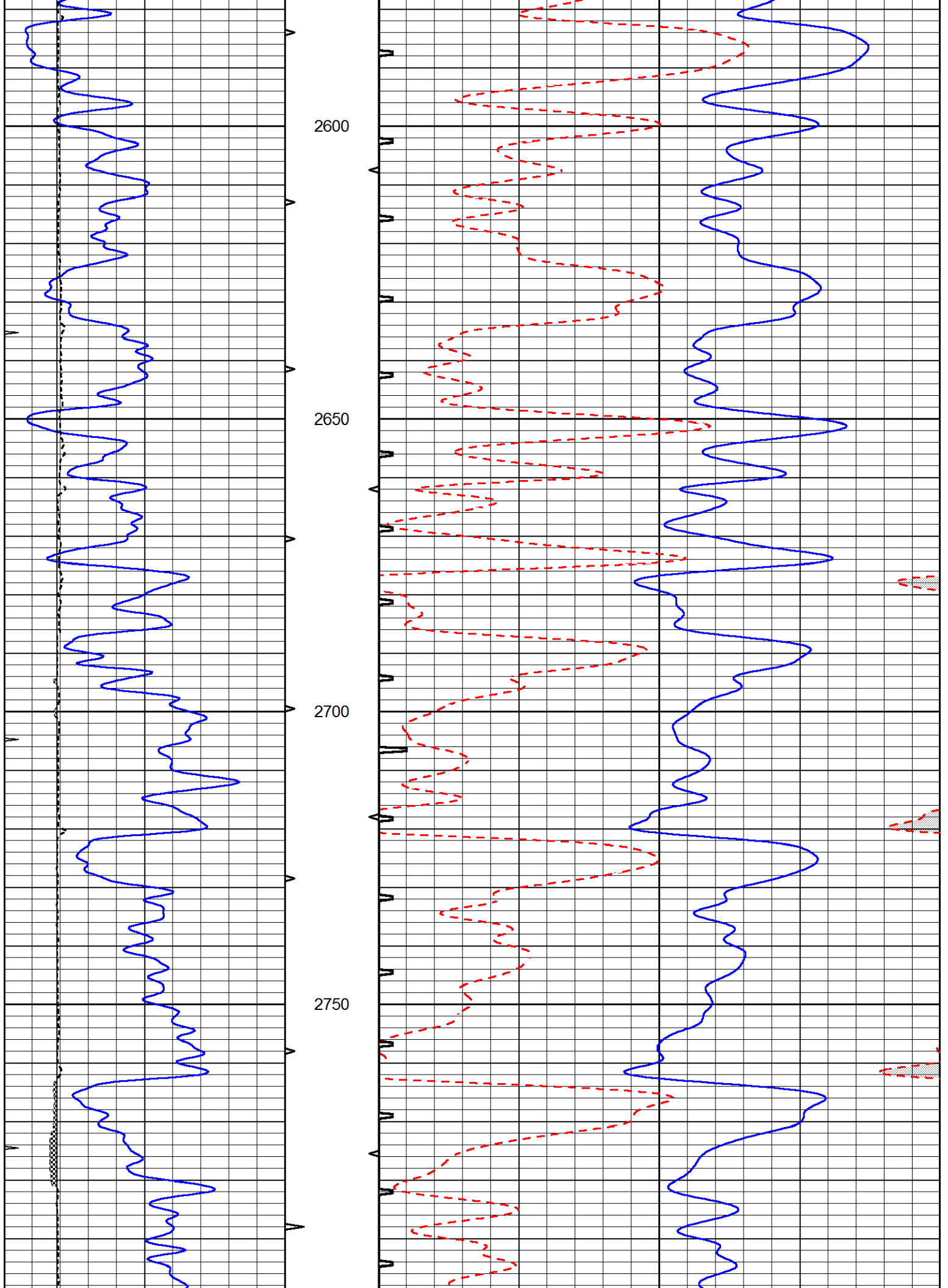


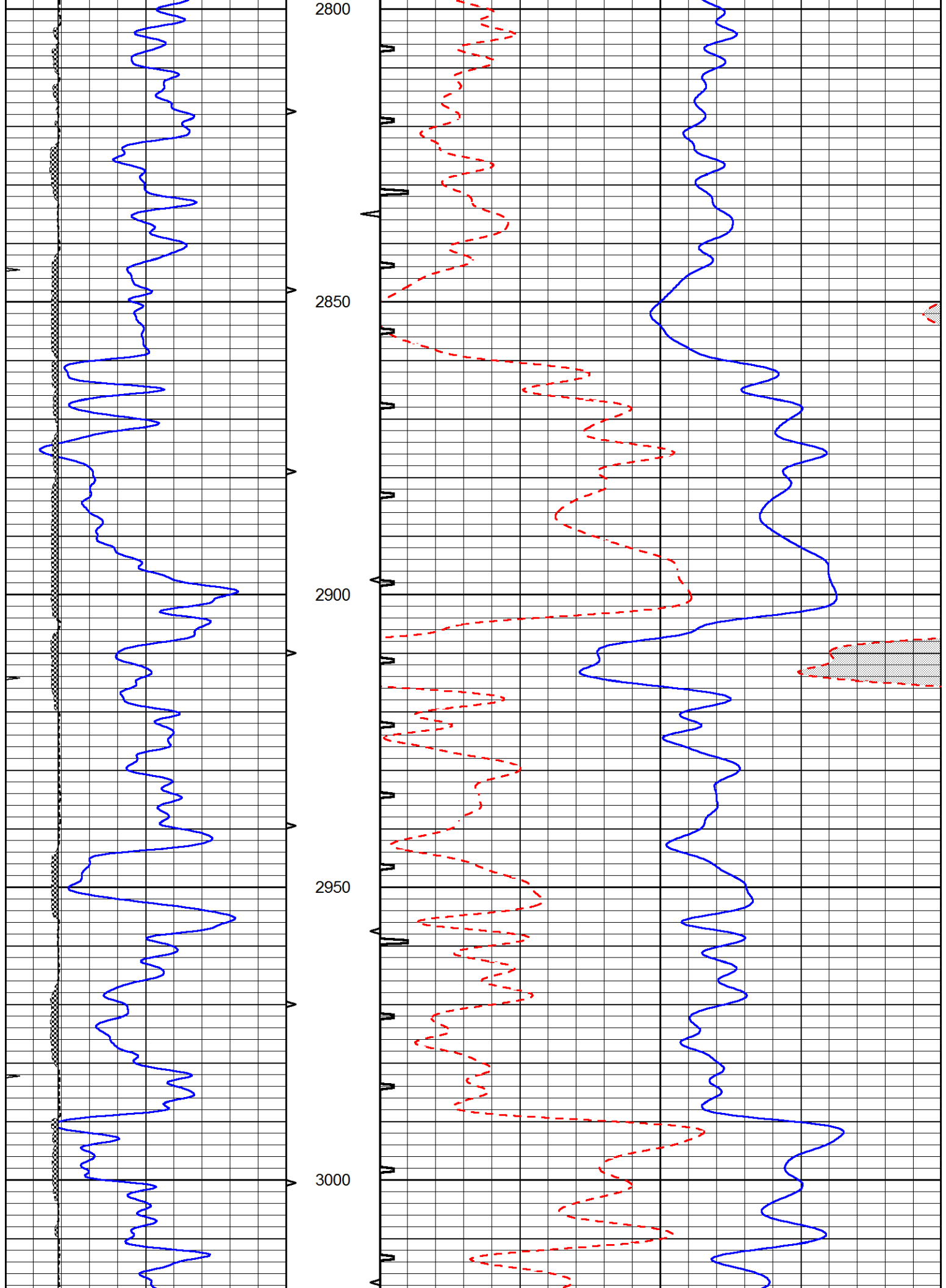


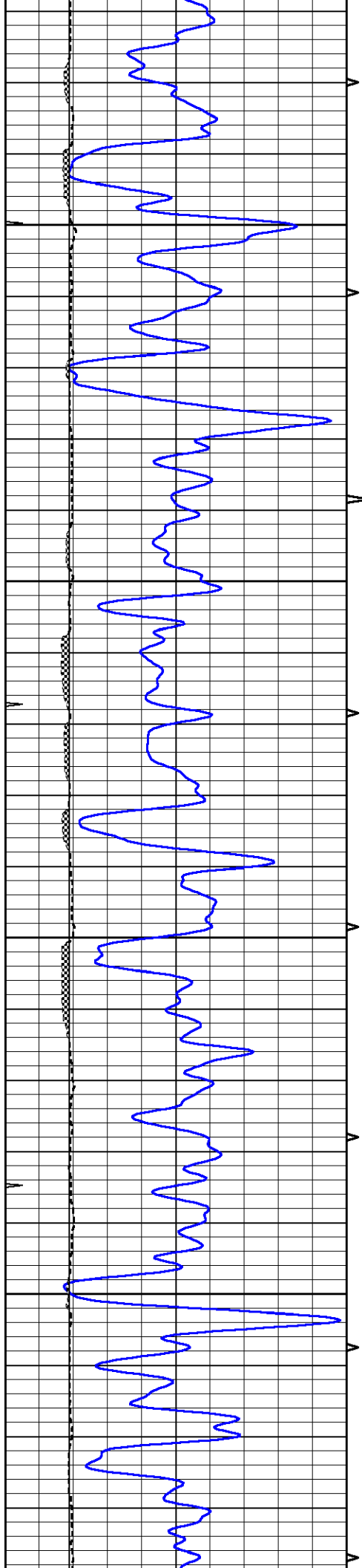










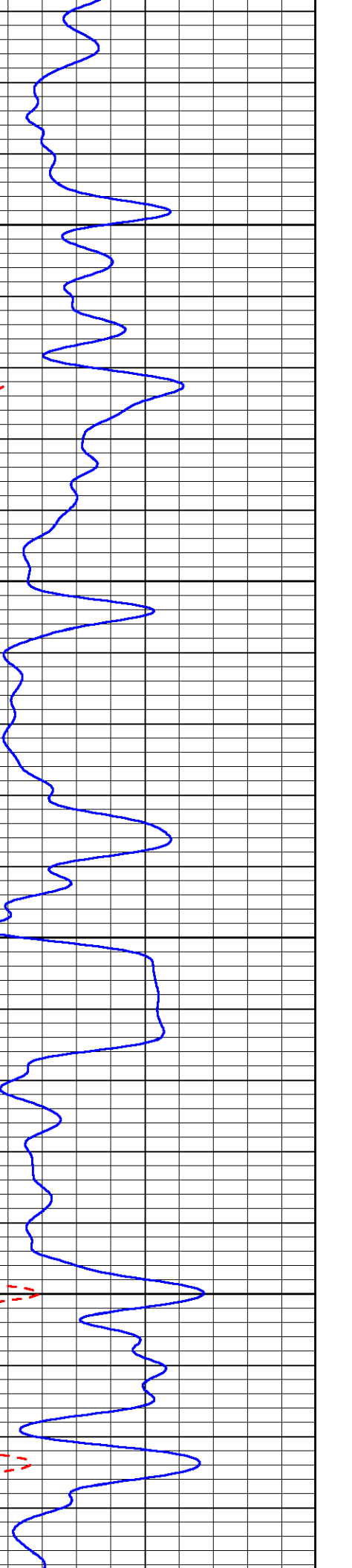
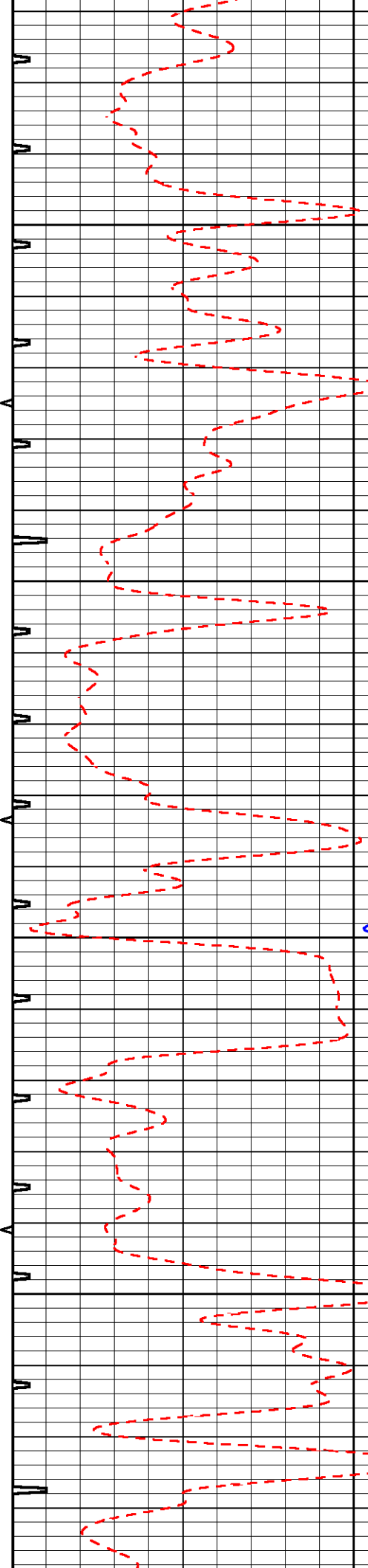


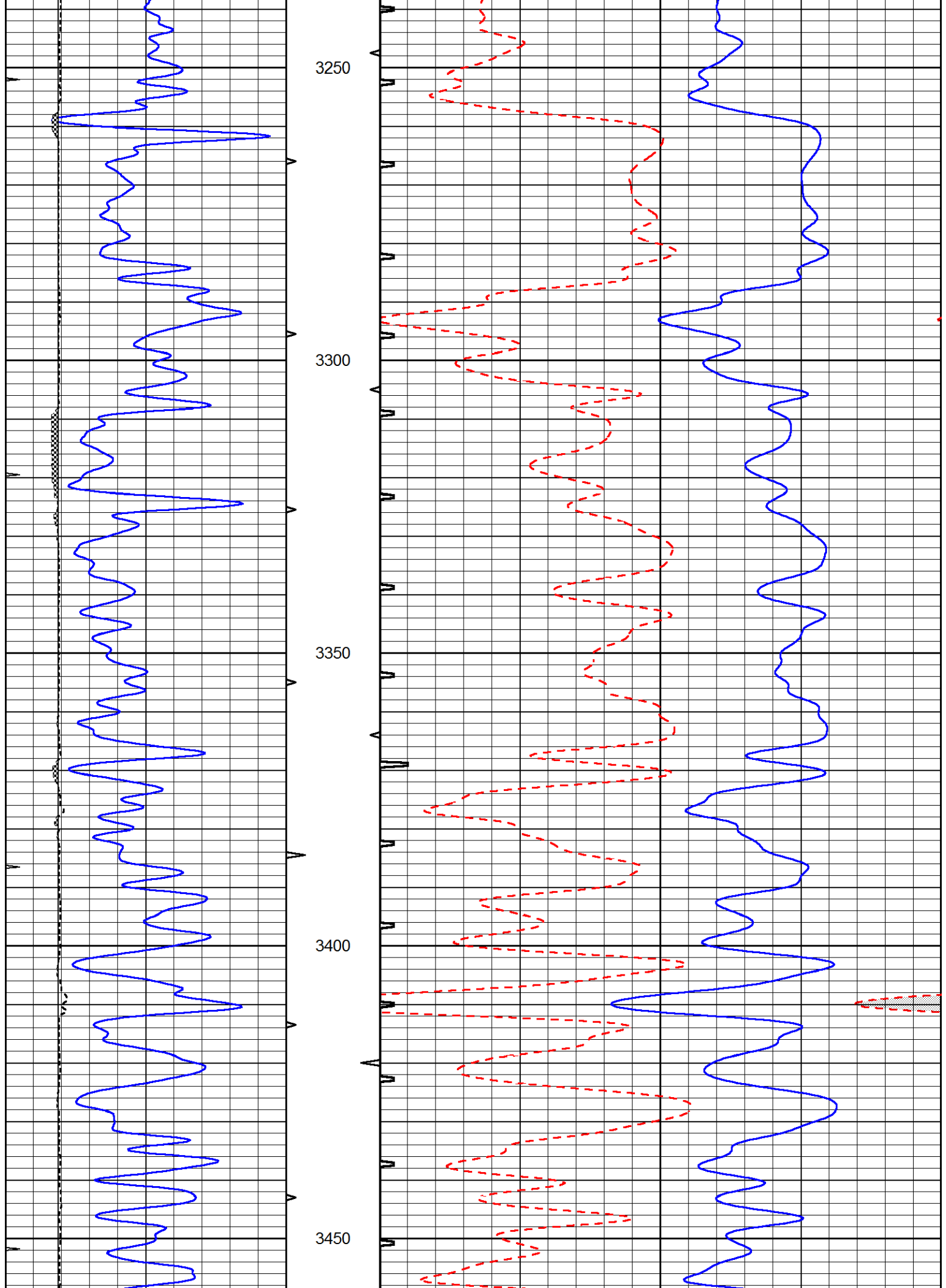
3050

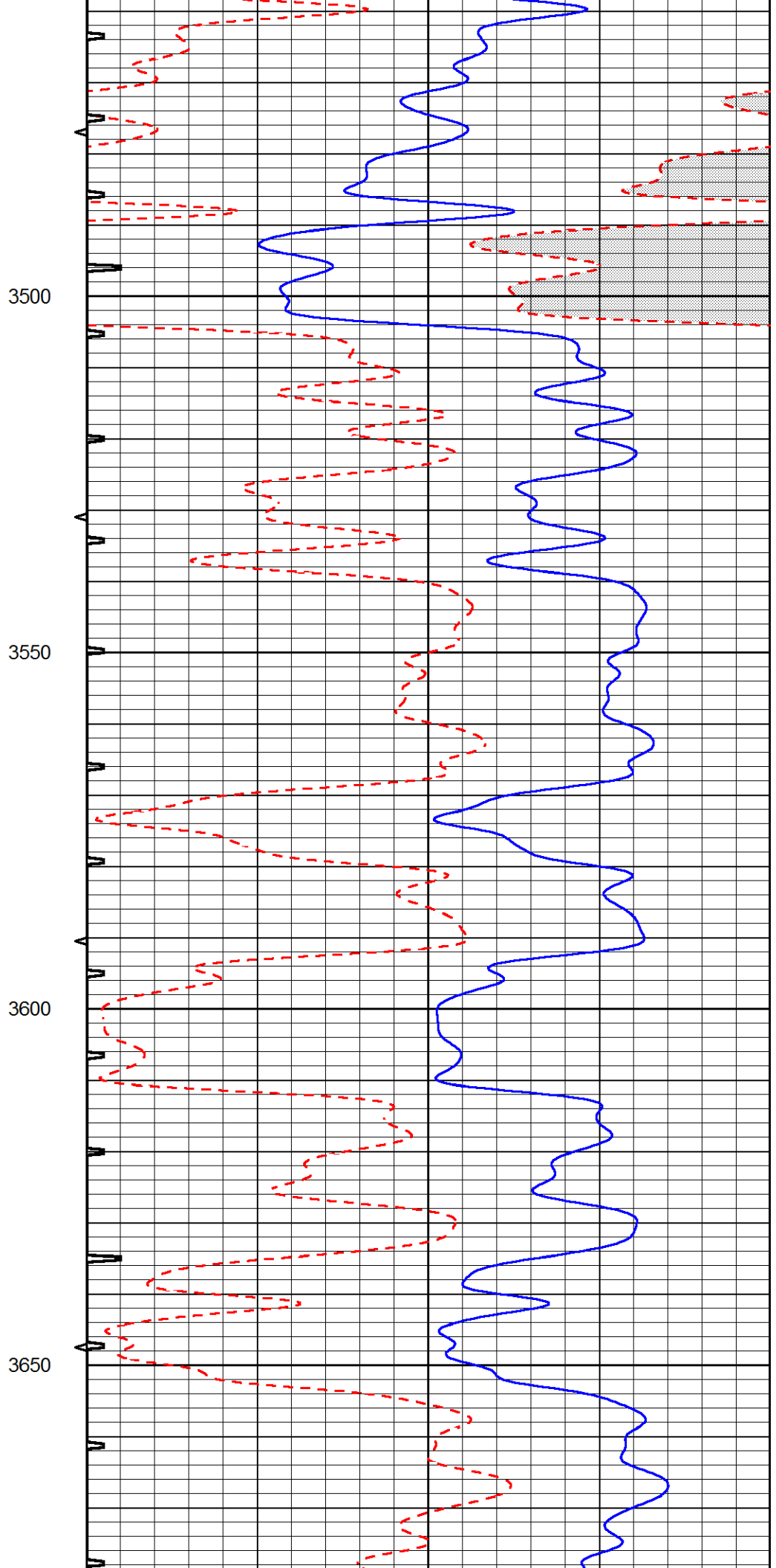
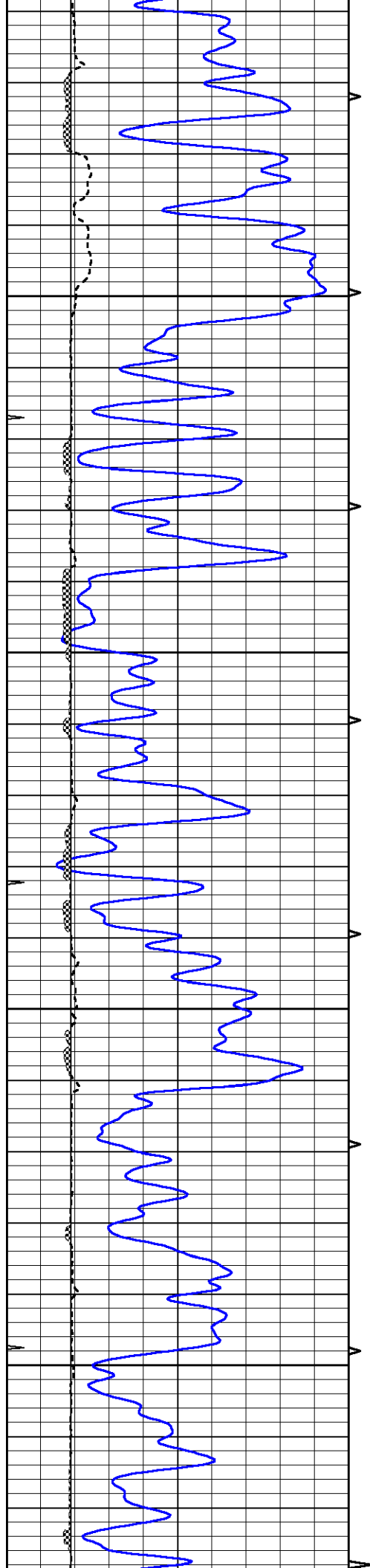
3100

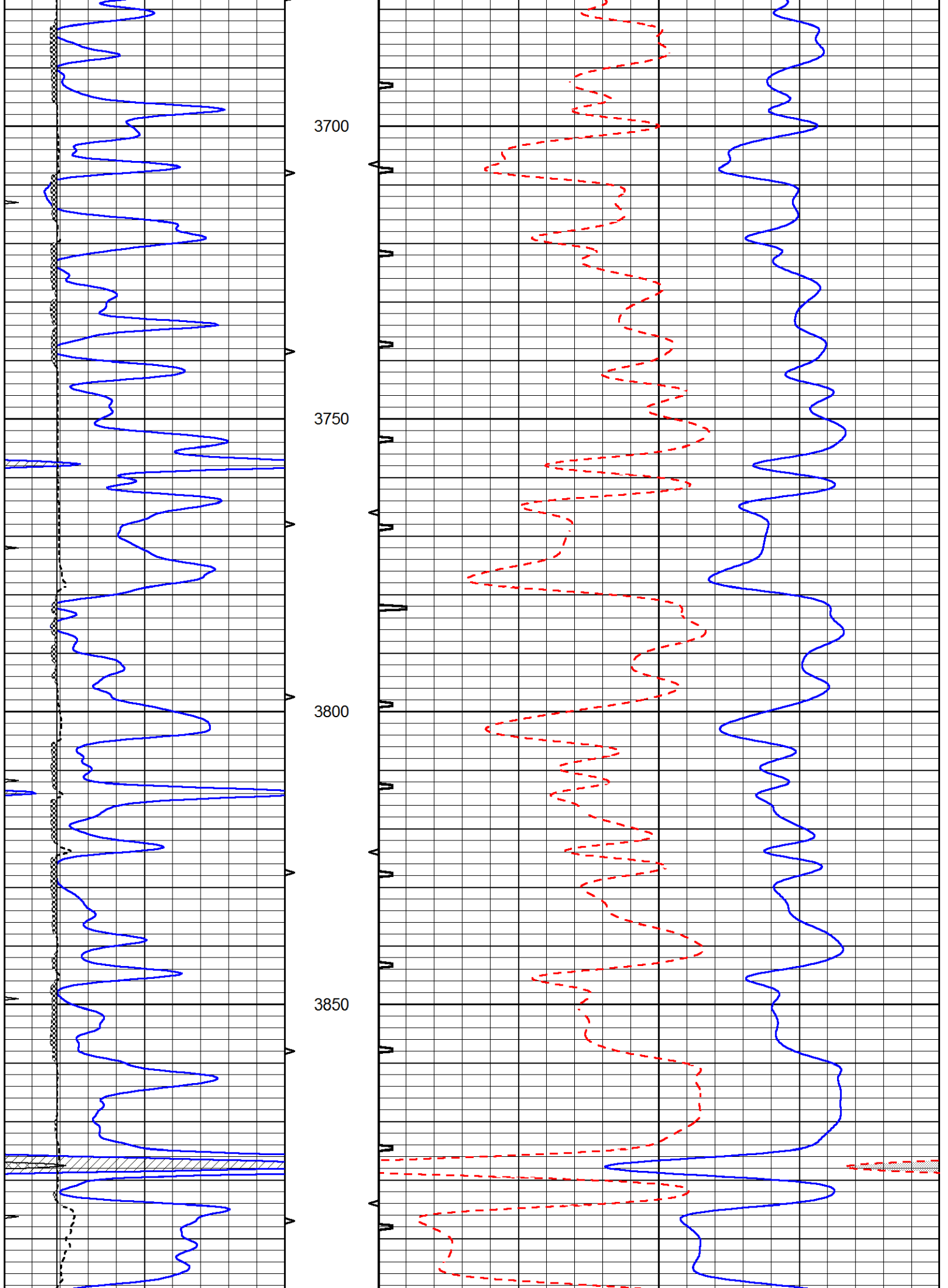
3150

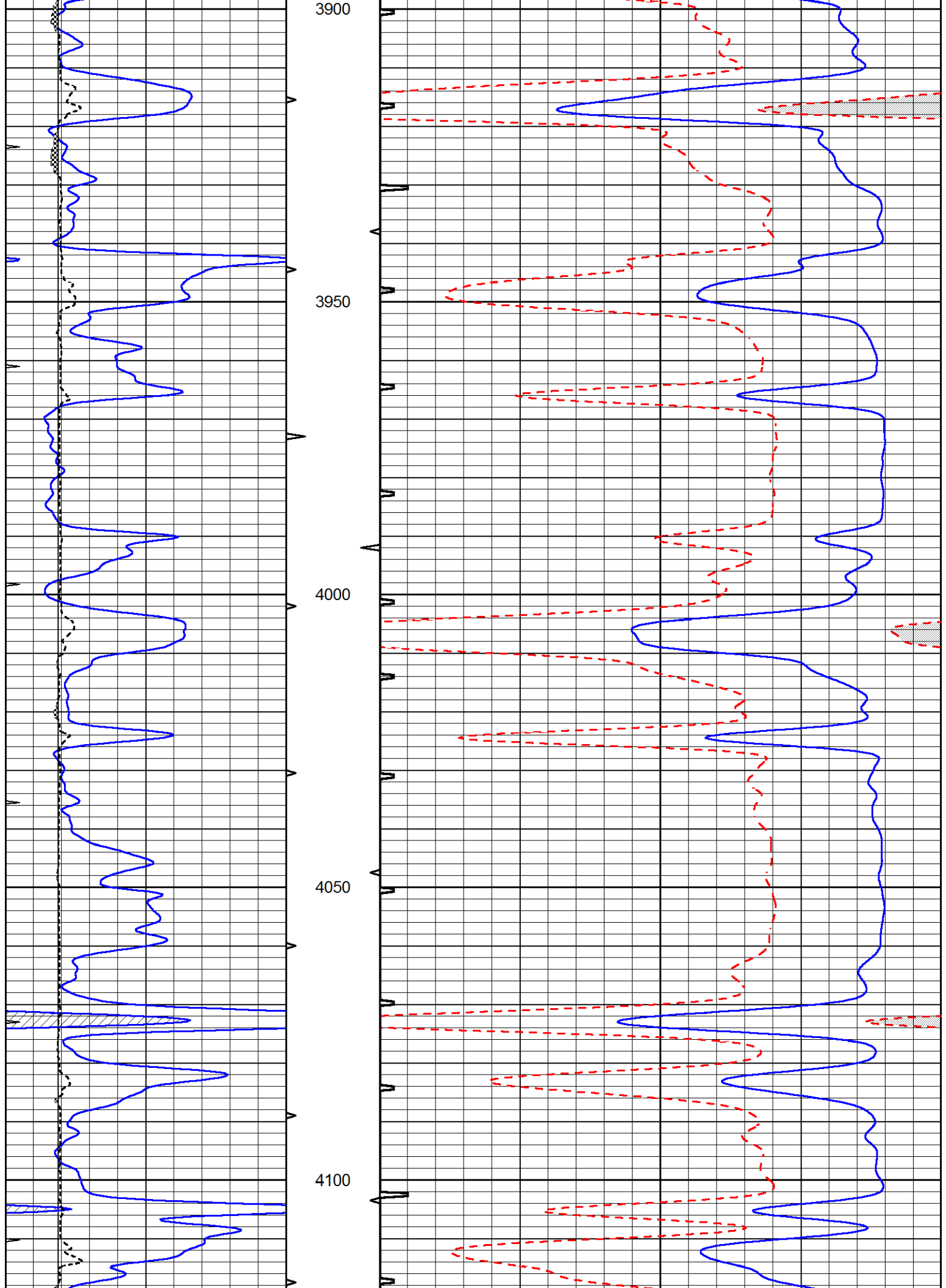
3200

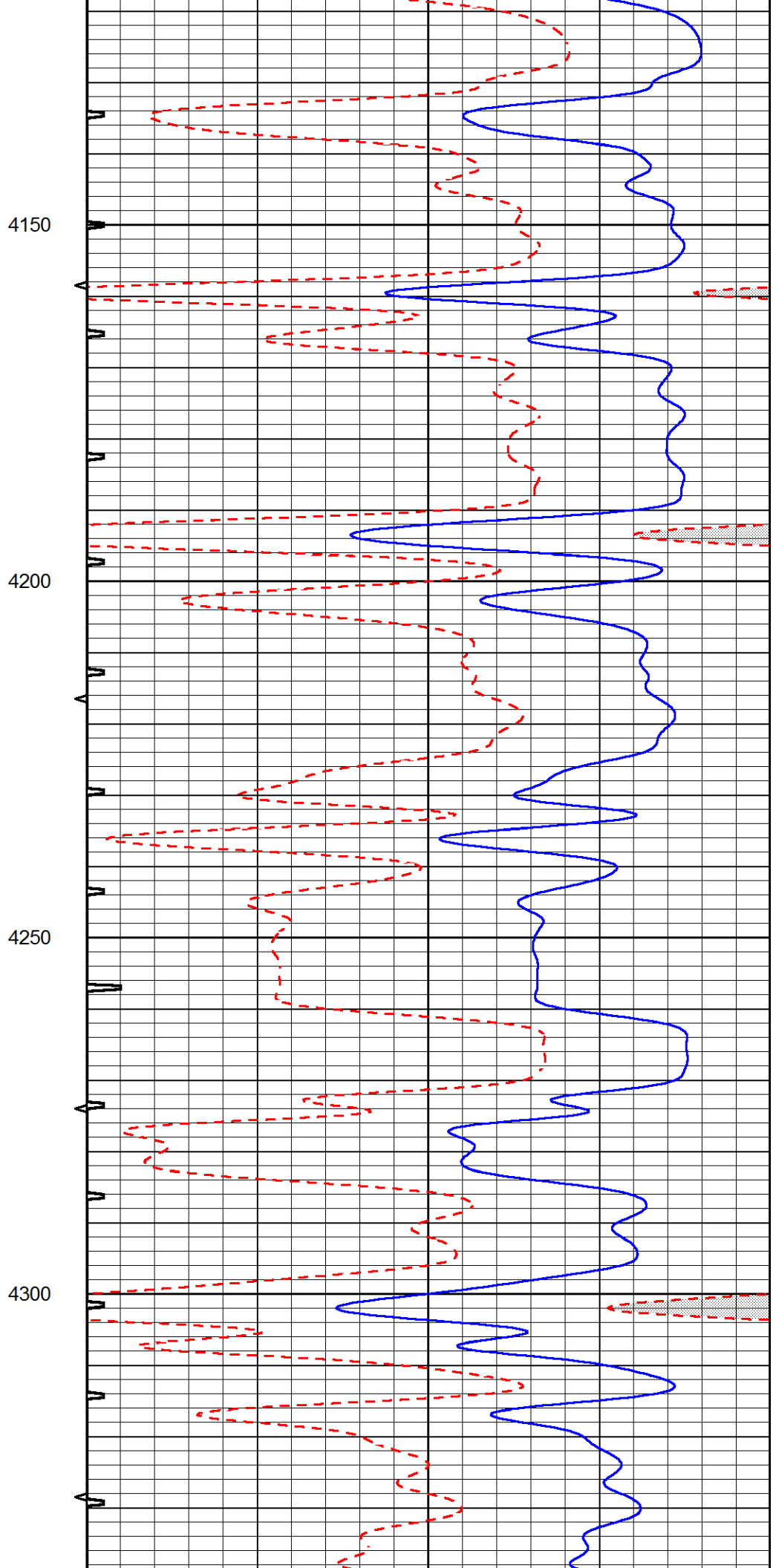
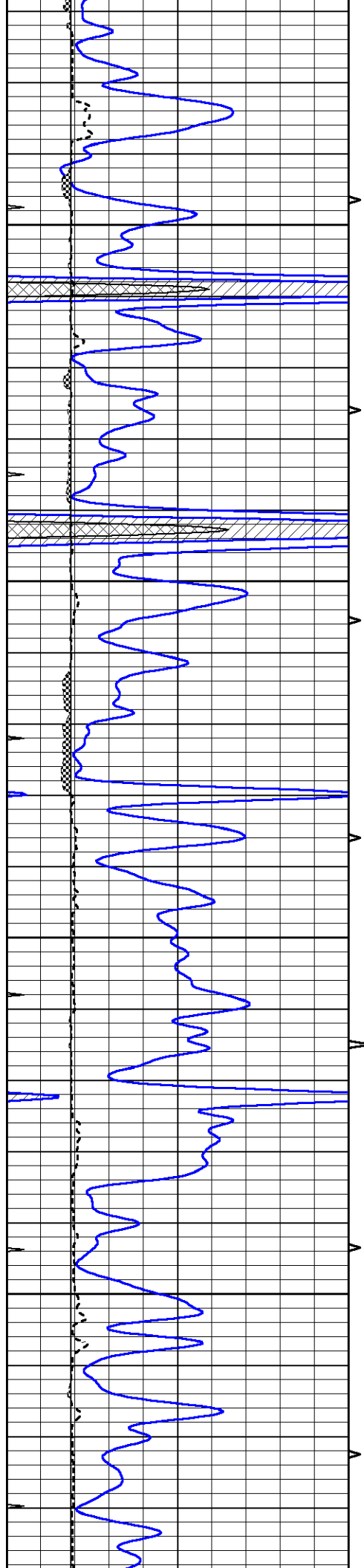


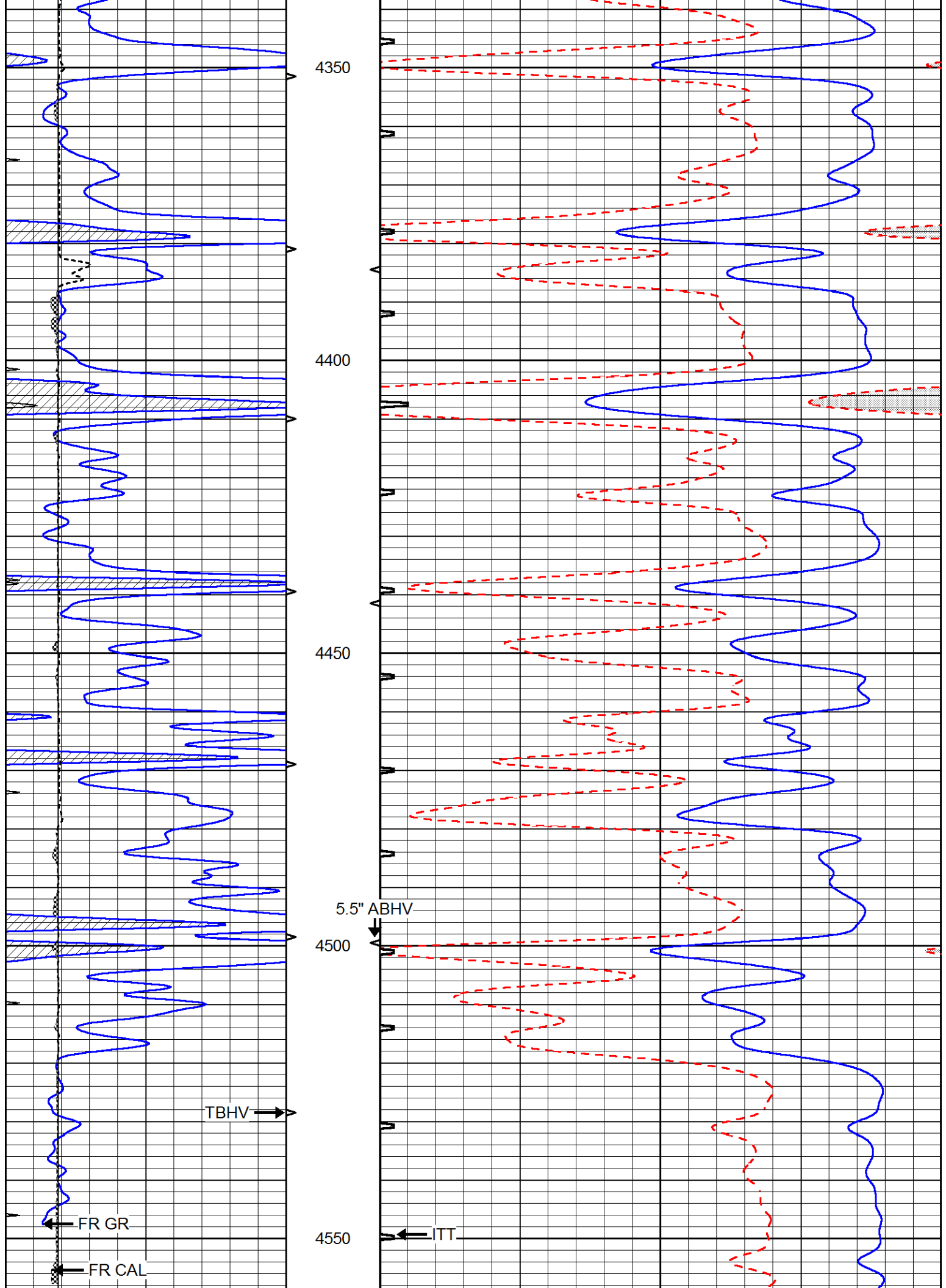


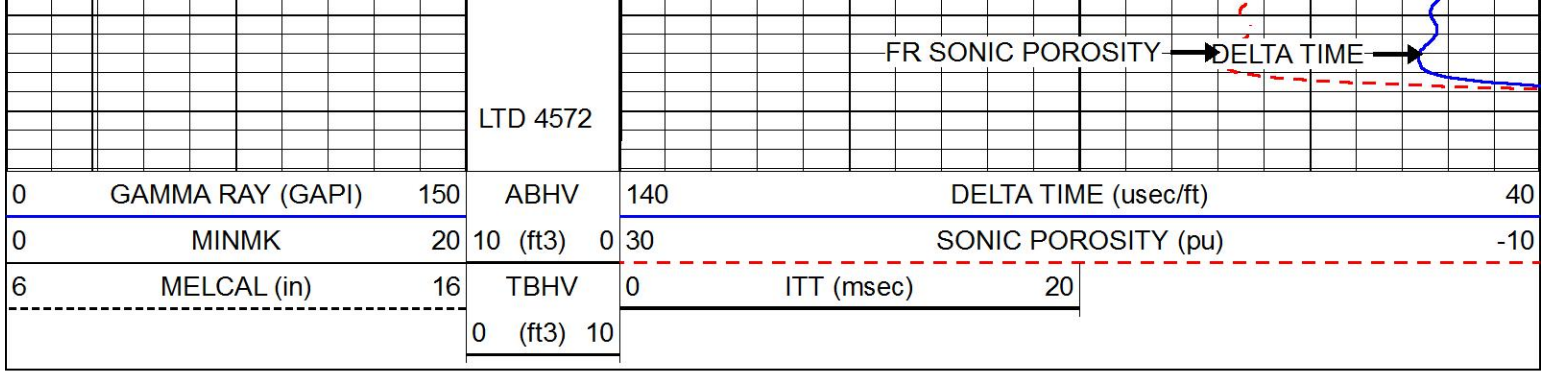






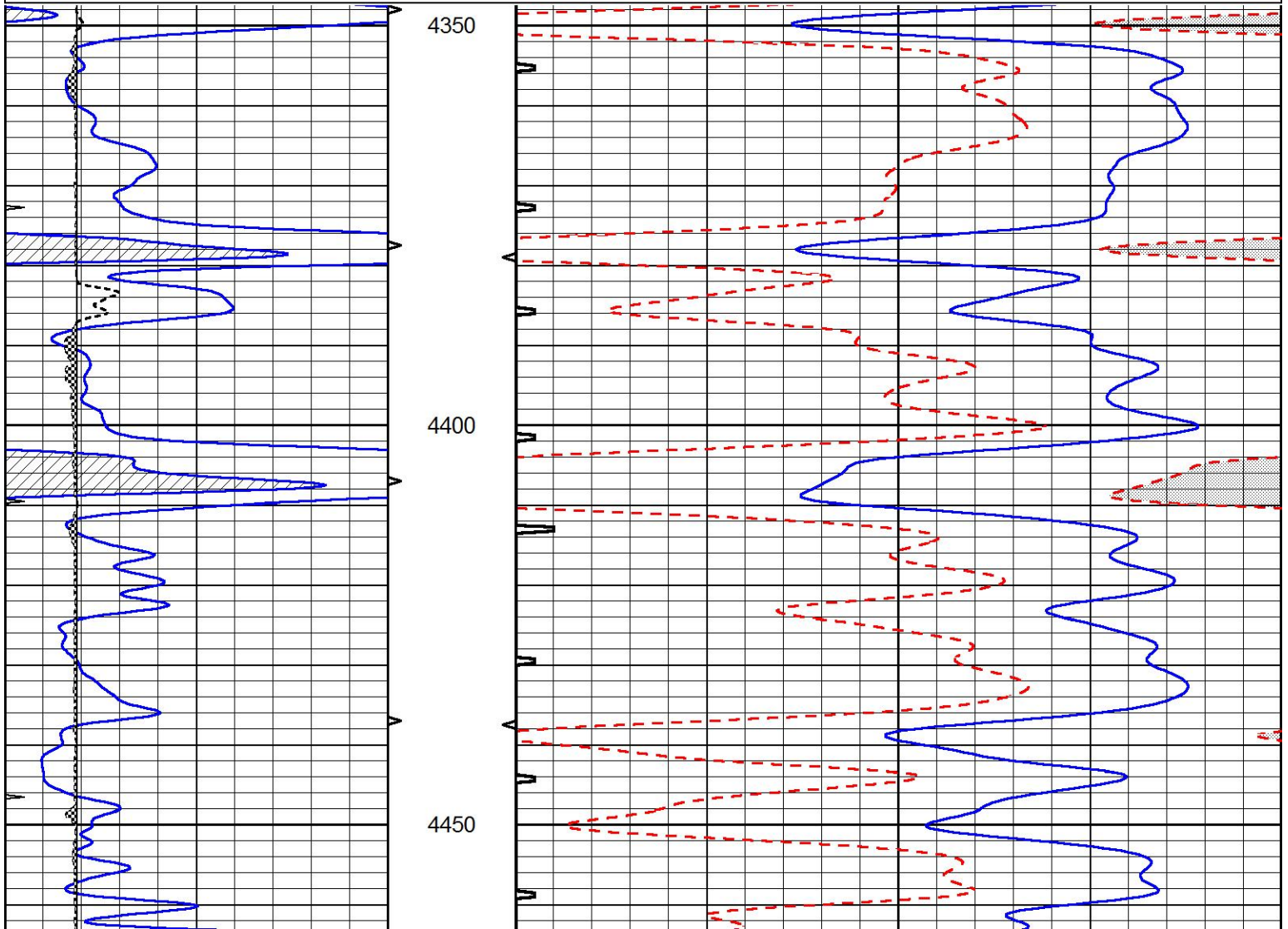
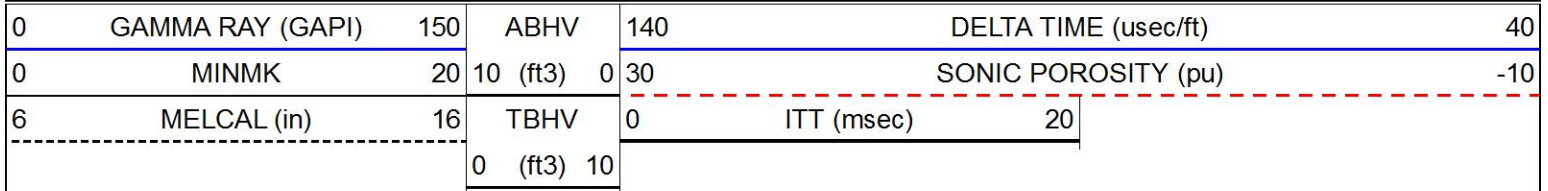


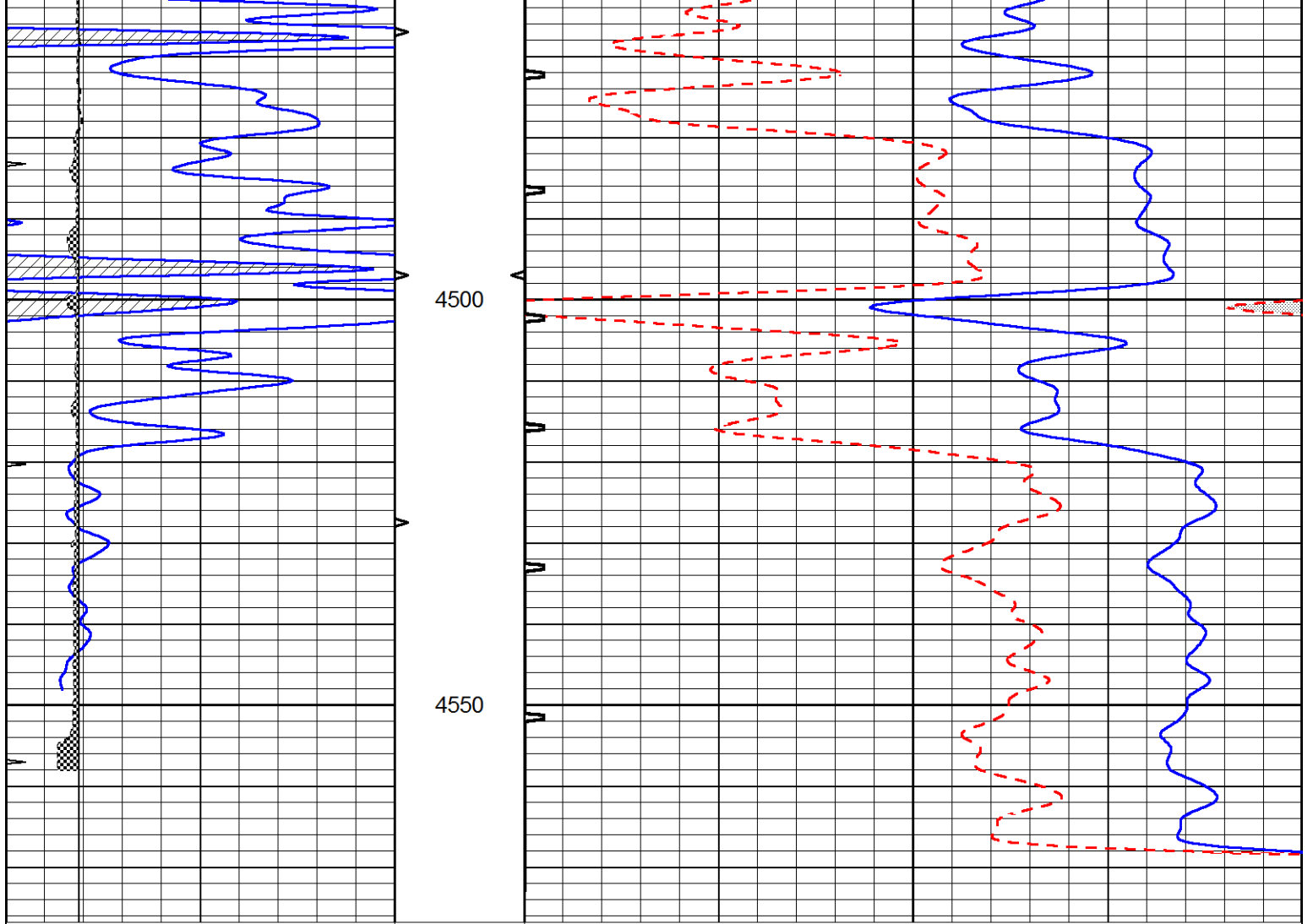




# REPEAT SECTION

Database File 6809pe.db  
 Dataset Pathname pass5.2  
 Presentation Format \_slt  
 Dataset Creation Sun Dec 04 02:58:18 2022  
 Charted by Depth in Feet scaled 1:240





0	GAMMA RAY (GAPI)	150	ABHV	140	DELTA TIME (uSec/ft)	40	
0	MINMK	20	10 (ft3)	0	30	SONIC POROSITY (pu)	-10
6	MELCAL (in)	16	TBHV	0	ITT (msec)	20	
			0 (ft3)	10			