

MICRO
LOG



Company GRAND MESA OPERATING
Well PRETTY WOMAN #1-20
Field BUTTERFIELD - OVERLAND NORTHEAST
County GOVE State KANSAS

Location: API #: 15-063-22422-0000
1450' FNL & 529' FEL
NW - NE - SE - SE
Permanent Datum GROUND LEVEL Elevation 2818
Log Measured From KELLY BUSHING 11' A.G.L.
Drilling Measured From KELLY BUSHING
SEC 20 TWP 14S RGE 20W
Other Services
CDL/CNL/PE
DIL/SONIC
Elevation
K.B. 2829
D.F. 2827
G.L. 2818

Company	GRAND MESA OPERATING
Well	PRETTY WOMAN #1-20
Field	BUTTERFIELD - OVERLAND NORTHEAST
County	GOVE
State	KANSAS
Date	12/4/22
Run Number	TWO
Depth Driller	4571
Depth Logger	4572
Bottom Logged Interval	4556
Top Log Interval	3800
Casing Driller	10 3/4"@246'
Casing Logger	246
Bit Size	7 7/8"
Type Fluid in Hole	CHEMICAL MUD
Density / Viscosity	9.2/60
pH / Fluid Loss	10.5/6.4
Source of Sample	FLOWLINE
Rm @ Meas. Temp	2.00@65F
Rmf @ Meas. Temp	1.50@65F
Rmc @ Meas. Temp	2.40@65F
Source of Rmf / Rmc	MEASURED
Rm @ BHT	1.07@120F
Time Circulation Stopped	4 HOURS
Time Logger on Bottom	1:00 A.M.
Maximum Recorded Temperature	120F
Equipment Number	8916
Location	HAYS, KANSAS
Recorded By	JEFF LUEBBERS
Witnessed By	GARET DINKEL

<<< Fold Here >>>

All interpretations are opinions based on inferences from electrical or other measurements and we cannot and do not guarantee the accuracy or correctness of any interpretation, and we shall not, except in the case of gross or willful negligence on our part, be liable or responsible for any loss, costs, damages, or expenses incurred or sustained by anyone resulting from any interpretation made by any of our officers, agents or employees. These interpretations are also subject to our general terms and conditions set out in our current Price Schedule.

Comments

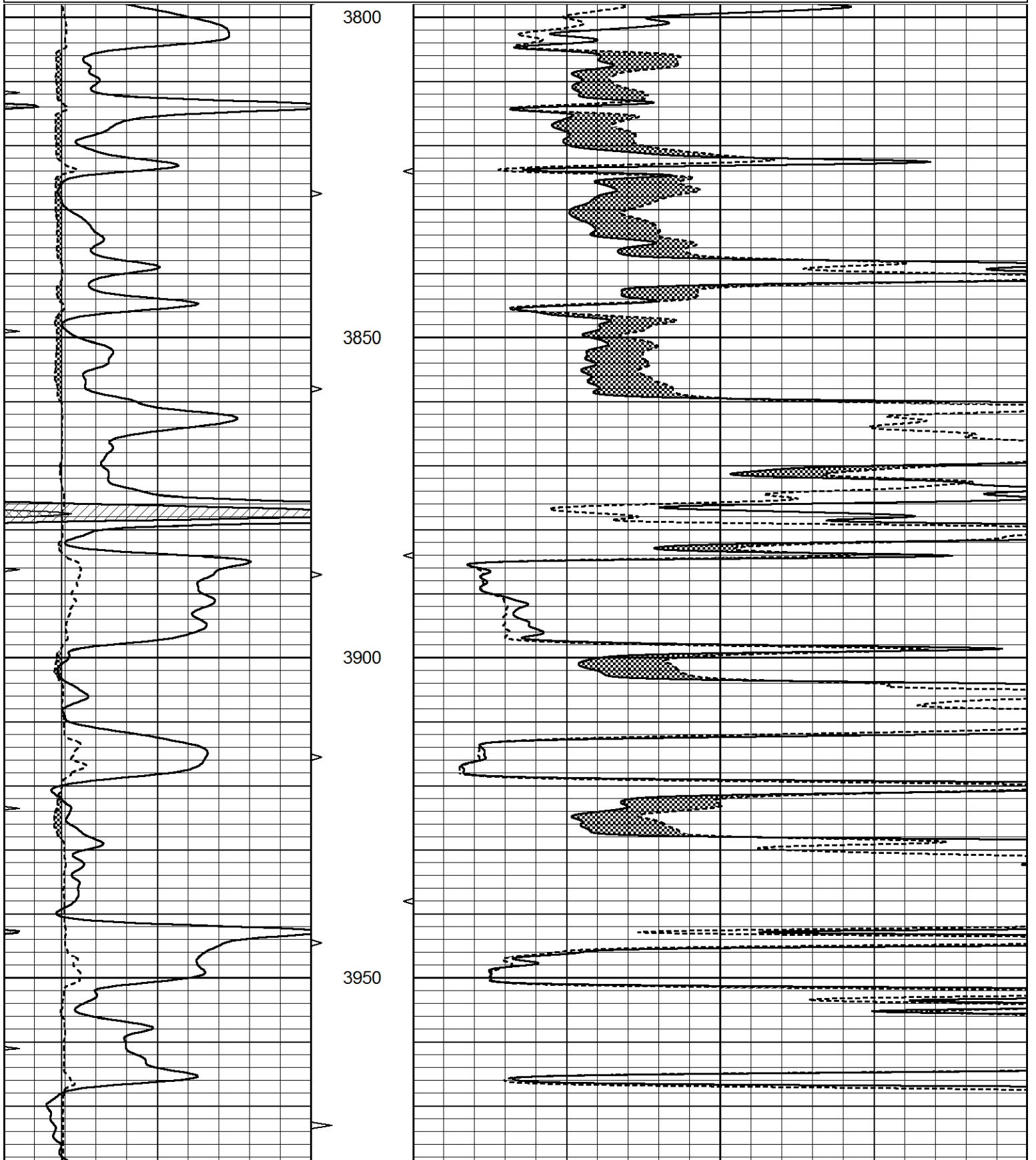
THANK YOU FOR USING ELI WIRELINE, HAYS, KS. (785) 628-6395
DIRECTIONS:
GOVE, KS., 11S. ON HWY 23 TO "RD. I", (COBERLY SIGN) 8 1/4W., 1N. INTO

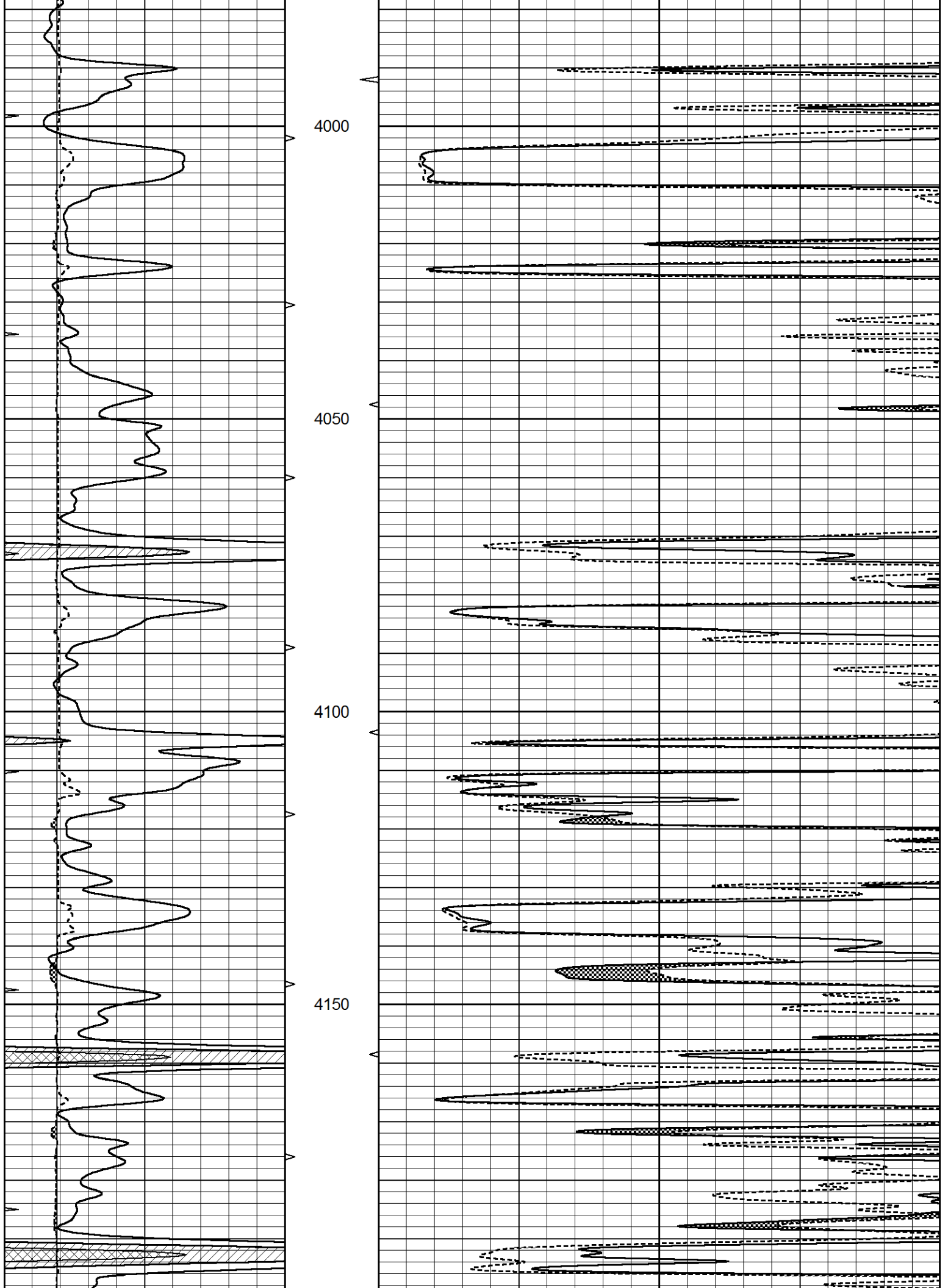


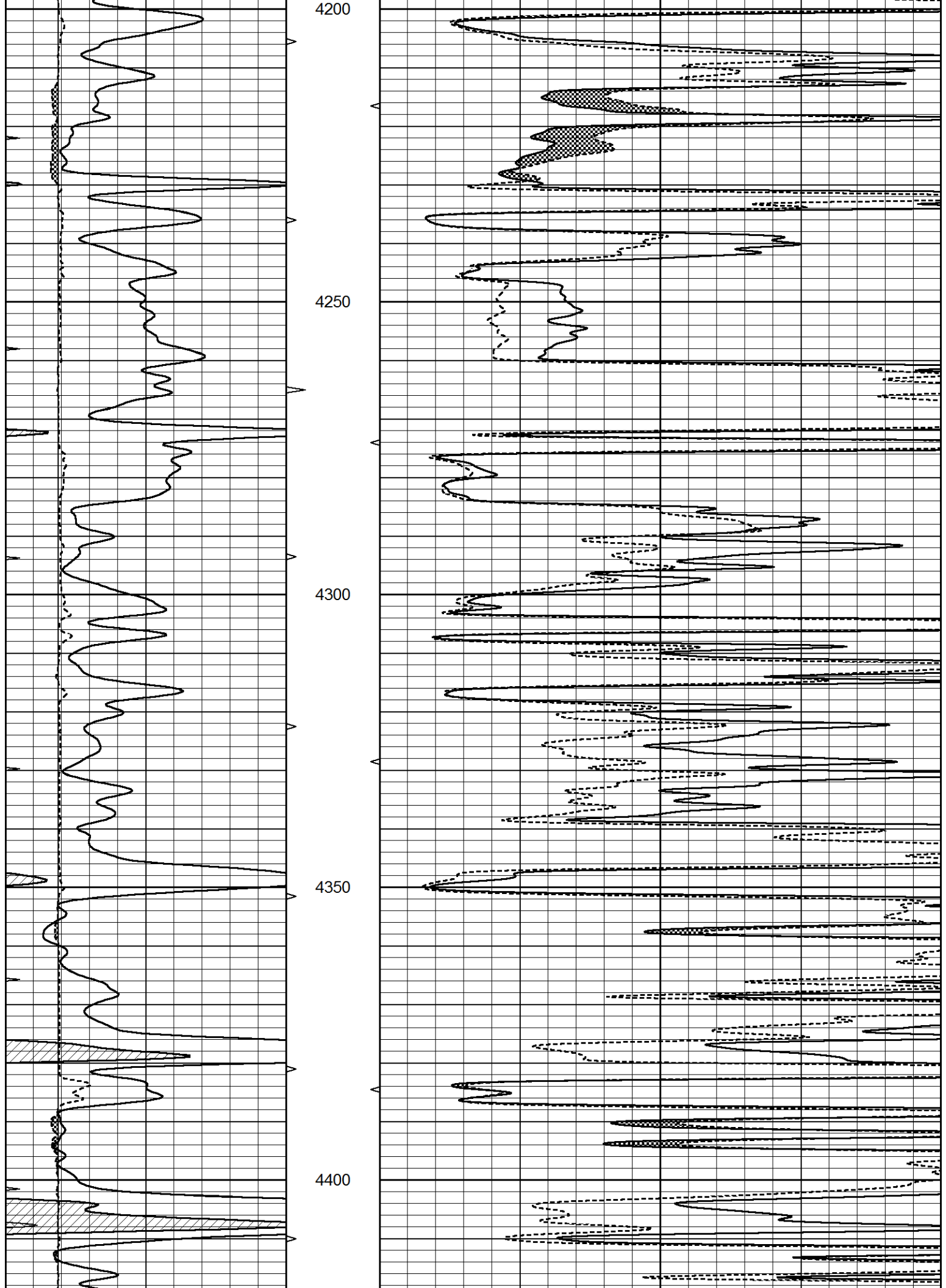
MAIN SECTION

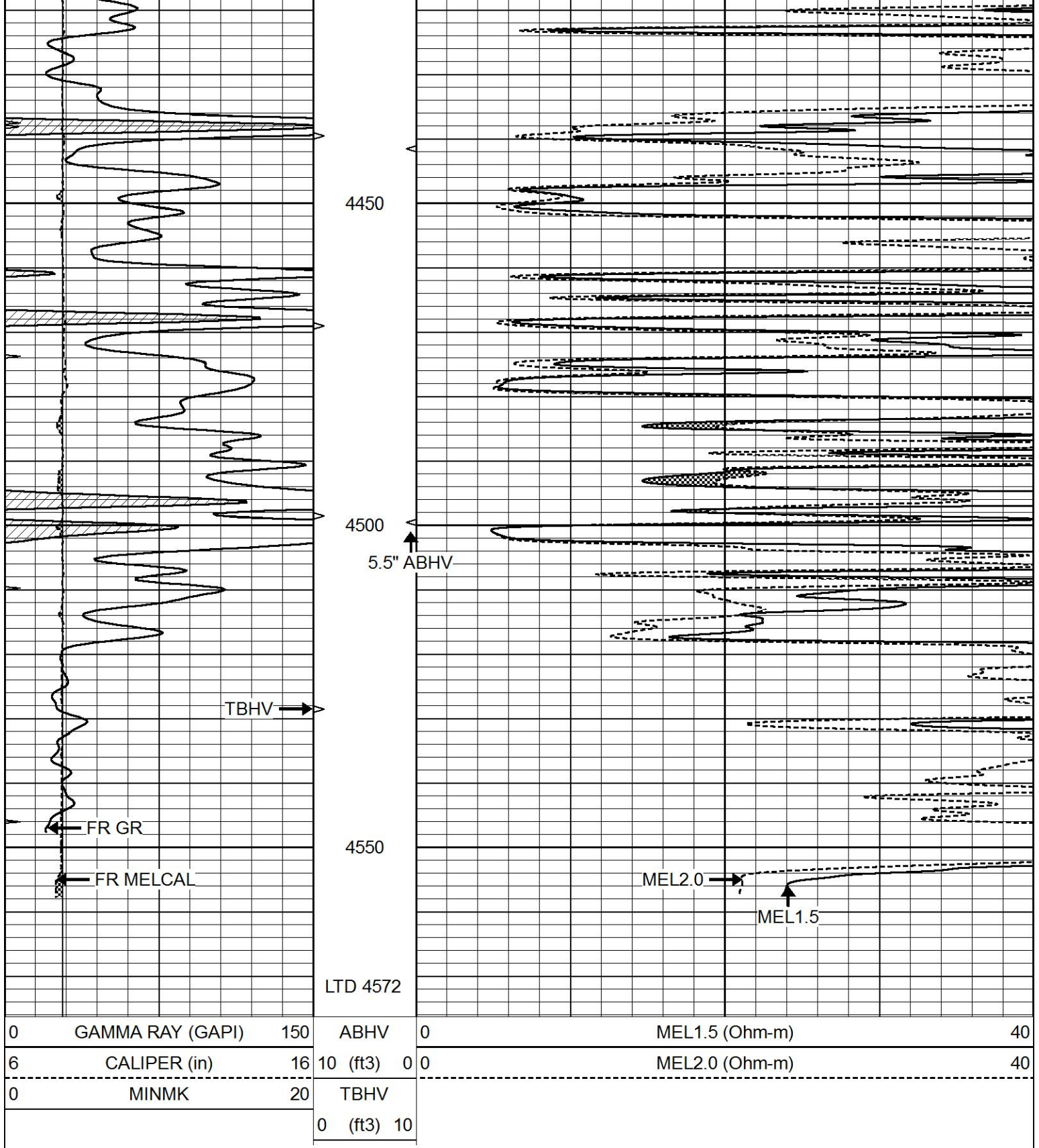
Database File 6809pe.db
 Dataset Pathname pass6.3
 Presentation Format _micro
 Dataset Creation Sun Dec 04 02:14:18 2022
 Charted by Depth in Feet scaled 1:240

0	GAMMA RAY (GAPI)	150	ABHV	0	MEL1.5 (Ohm-m)	40
6	CALIPER (in)	16	10 (ft3)	0	MEL2.0 (Ohm-m)	40
0	MINMK	20	TBHV			
			0 (ft3)	10		





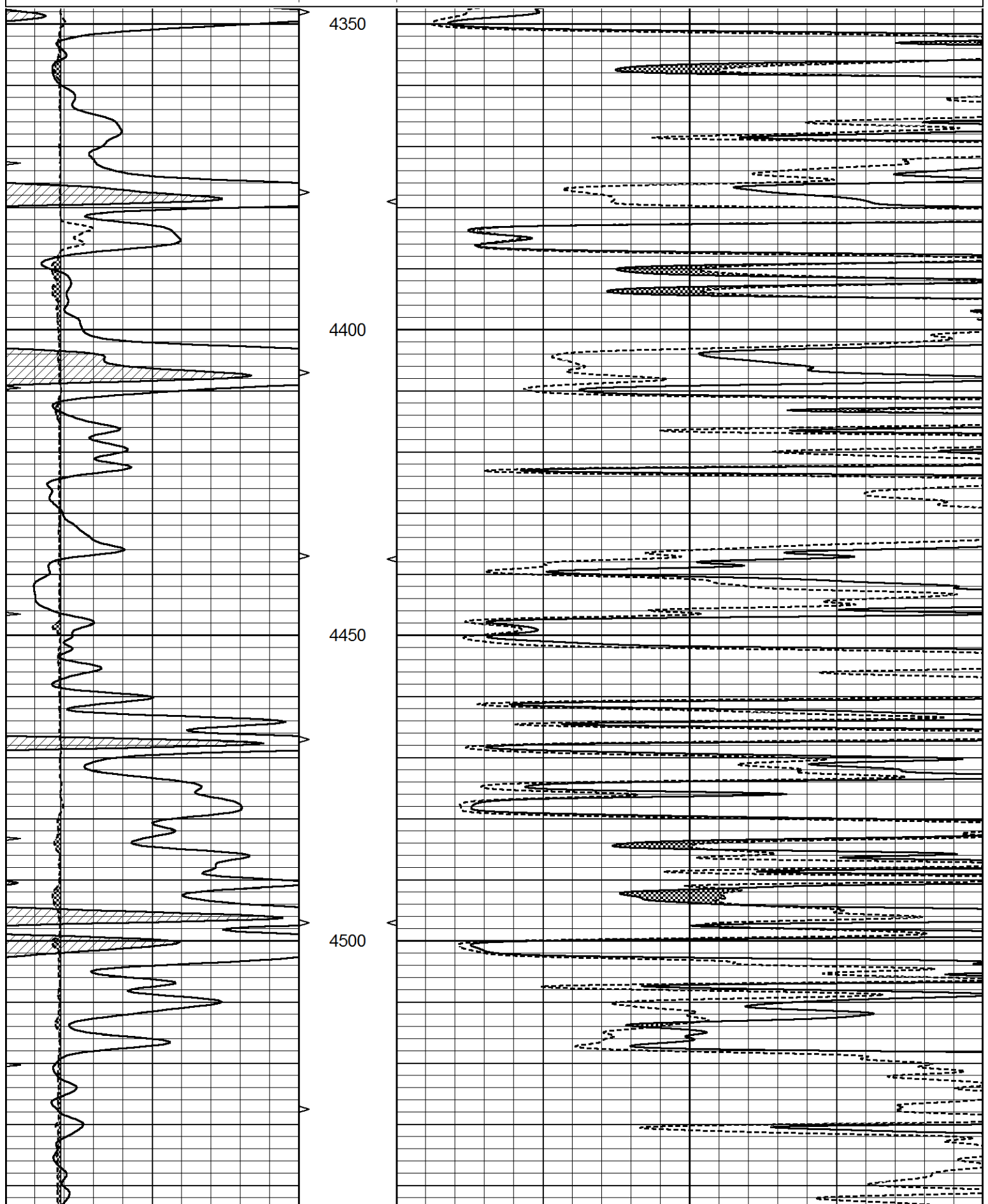


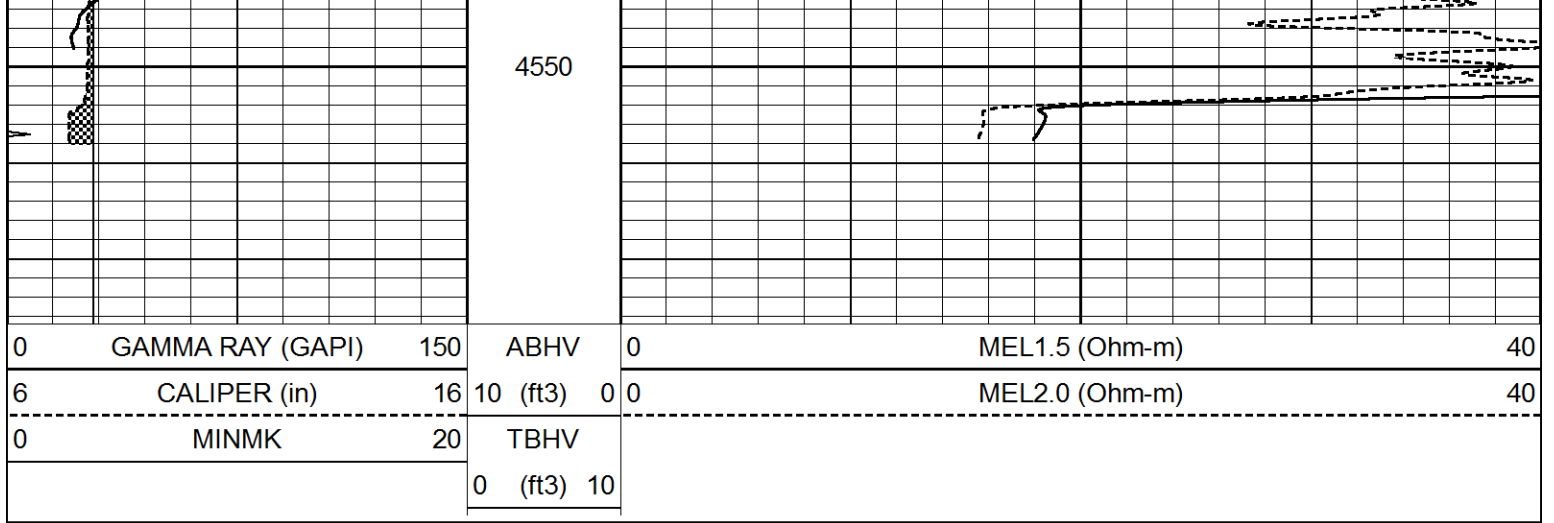


REPEAT SECTION

Database File 6809pe.db
 Dataset Pathname pass5.1
 Presentation Format _micro
 Dataset Creation Sun Dec 04 01:43:00 2022
 Charted by Depth in Feet scaled 1:240

0	GAMMA RAY (GAPI)	150	ABHV	0	MEL1.5 (Ohm-m)	40
6	CALIPER (in)	16	10 (ft3)	0	MEL2.0 (Ohm-m)	40
0	MINMK	20	TBHV			
			0 (ft3)	10		





Calibration Report

Database File 6809pe.db
 Dataset Pathname pass6.3
 Dataset Creation Sun Dec 04 02:14:18 2022

MICRO Calibration Report

Serial Number: MICRO6
 Tool Model: PROBE
 Performed: Sun Dec 04 01:42:16 2022

Caliper Calibration: Gain=-2.735 Offset=18.612

	Low Cal	High Cal
References	8.000	16.000
Readings	3.880	0.955

1.5" Calibration: Gain=40.000 Offset=0.000

	Low Cal	High Cal
References	0.000	20.000
Readings	0.002	0.624

2" Calibration: Gain=50.000 Offset=0.000

	Low Cal	High Cal
References	0.000	20.000
Readings	0.006	0.468

Gamma Ray Calibration Report

Serial Number: GR5
 Tool Model: OPEN
 Performed: Fri Dec 02 09:58:24 2022

Calibrator Value: 1.0 GAPI

Background Reading:	0.0	cps
Calibrator Reading:	1.0	cps

Sensitivity: 0.5600 GAPI/cps