

SONIC
LOG



Company	McCOY PETROLEUM CORPORATION	Company	McCOY PETROLEUM CORPORATION
Well	YOHN "A" #4-26	Well	YOHN "A" #4-26
Field	UNNAMED	Field	UNNAMED
County	KIOWA	County	KIOWA
State	KANSAS	State	KANSAS
Location:	2310' FNL & 1650' FWL SW - SE - NW	API # : 15-097-21869-0000	Other Services CDL/CNL/PE DIL/MEL
Permanent Datum	GROUND LEVEL	Elevation	2239
Log Measured From	KELLY BUSHING 11' A.G.L.	K.B.	2250
Drilling Measured From	KELLY BUSHING	D.F.	2248
		G.L.	2239
Date	12/30/22		
Run Number	TWO		
Depth Driller	5280		
Depth Logger	5278		
Bottom Logged Interval	5270		
Top Log Interval	600		
Casing Driller	8 5/8"@634'		13 3/8"@250'
Casing Logger	636		
Bit Size	7 7/8"		
Type Fluid in Hole	CHEMICAL MUD		CHLORIDES: 3,400 PPM
Density / Viscosity	9.4/53		
pH / Fluid Loss	11.0/7.2		
Source of Sample	FLOWLINE		
Rm @ Meas. Temp	.950@74F		
Rmf @ Meas. Temp	.713@74F		
Rmc @ Meas. Temp	1.14@74F		
Source of Rmf / Rmc	MEASURED		
Rm @ BHT	.549@128F		
Time Circulation Stopped	5 HOURS		
Time Logger on Bottom	7:15 P.M.		
Maximum Recorded Temperature	128F		
Equipment Number	8916		
Location	HAYS, KANSAS		
Recorded By	JEFF LUEBBERS		
Witnessed By	BLAKE MILLER		

<<< Fold Here >>>

All interpretations are opinions based on inferences from electrical or other measurements and we cannot and do not guarantee the accuracy or correctness of any interpretation, and we shall not, except in the case of gross or willful negligence on our part, be liable or responsible for any loss, costs, damages, or expenses incurred or sustained by anyone resulting from any interpretation made by any of our officers, agents or employees. These interpretations are also subject to our general terms and conditions set out in our current Price Schedule.

Comments

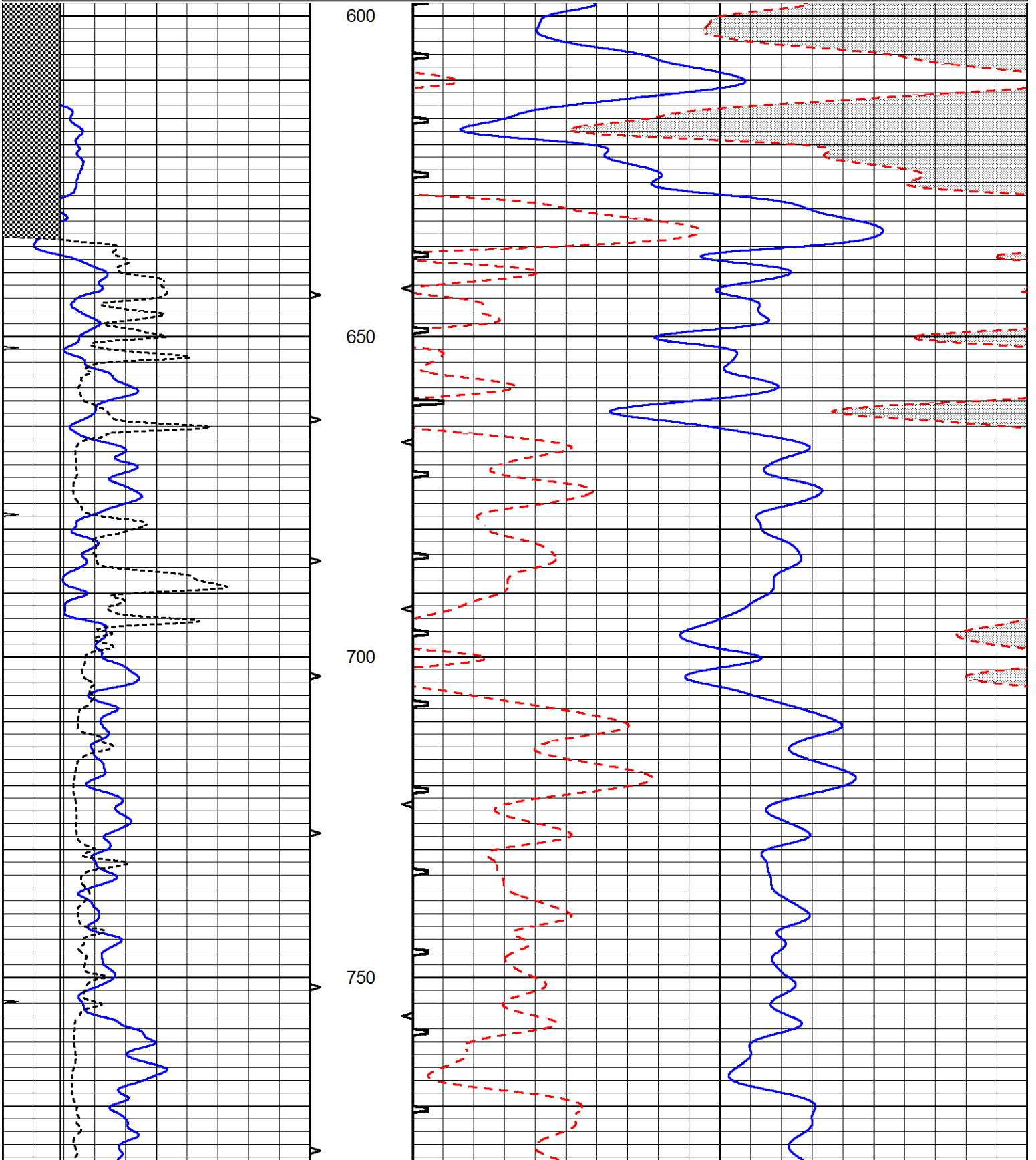
THANK YOU FOR USING ELI WIRELINE, HAYS, KS. (785) 628-6395
 DIRECTIONS:
 COLDWATER, KS., N. ON HWY 183 TO (COMANCHE/KIOWA COUNTY LINE) 3W. ON "A RD.", TO
 "21ST. AVE" 1 1/2 N., E. INTO

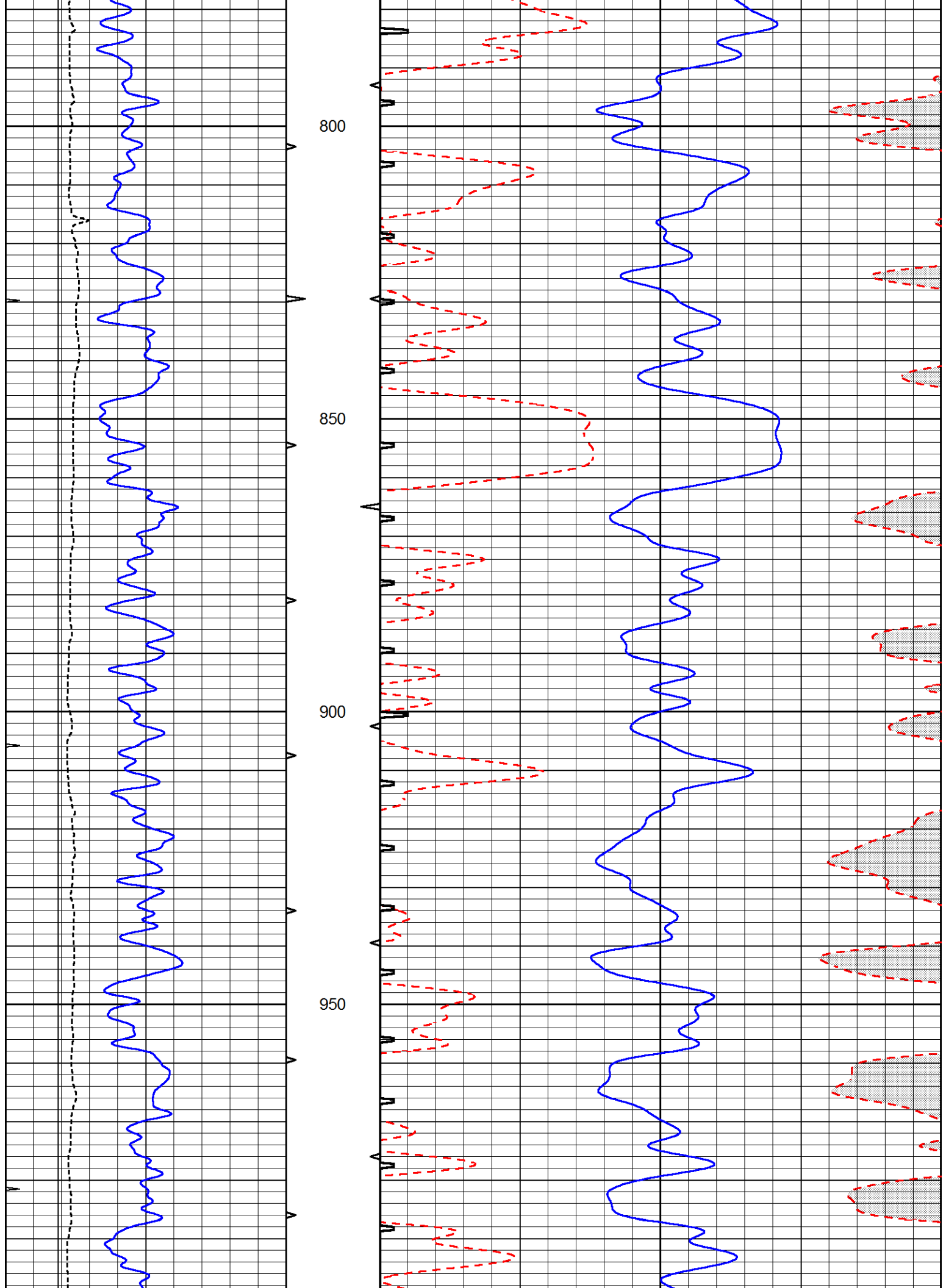


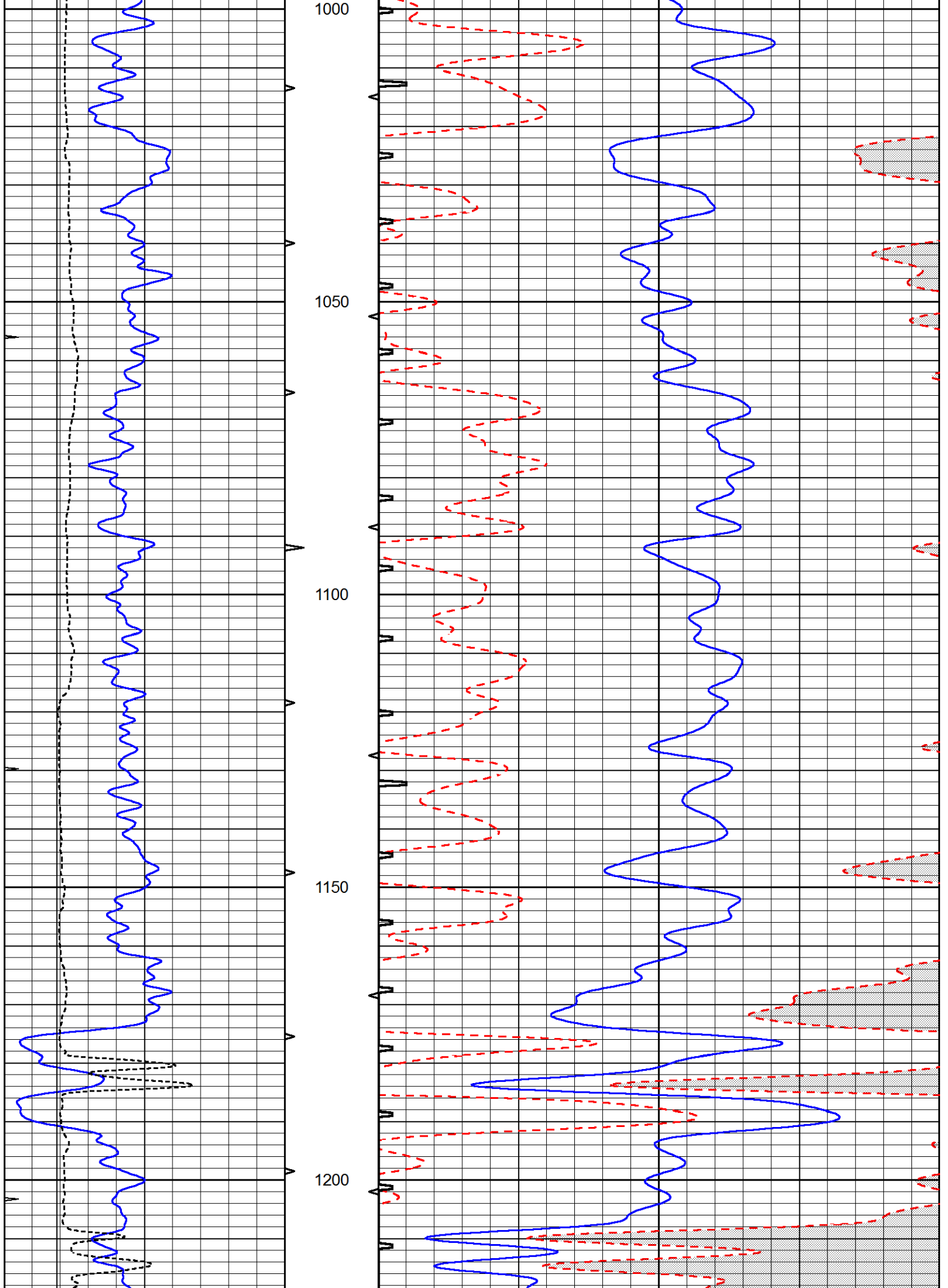
MAIN SECTION

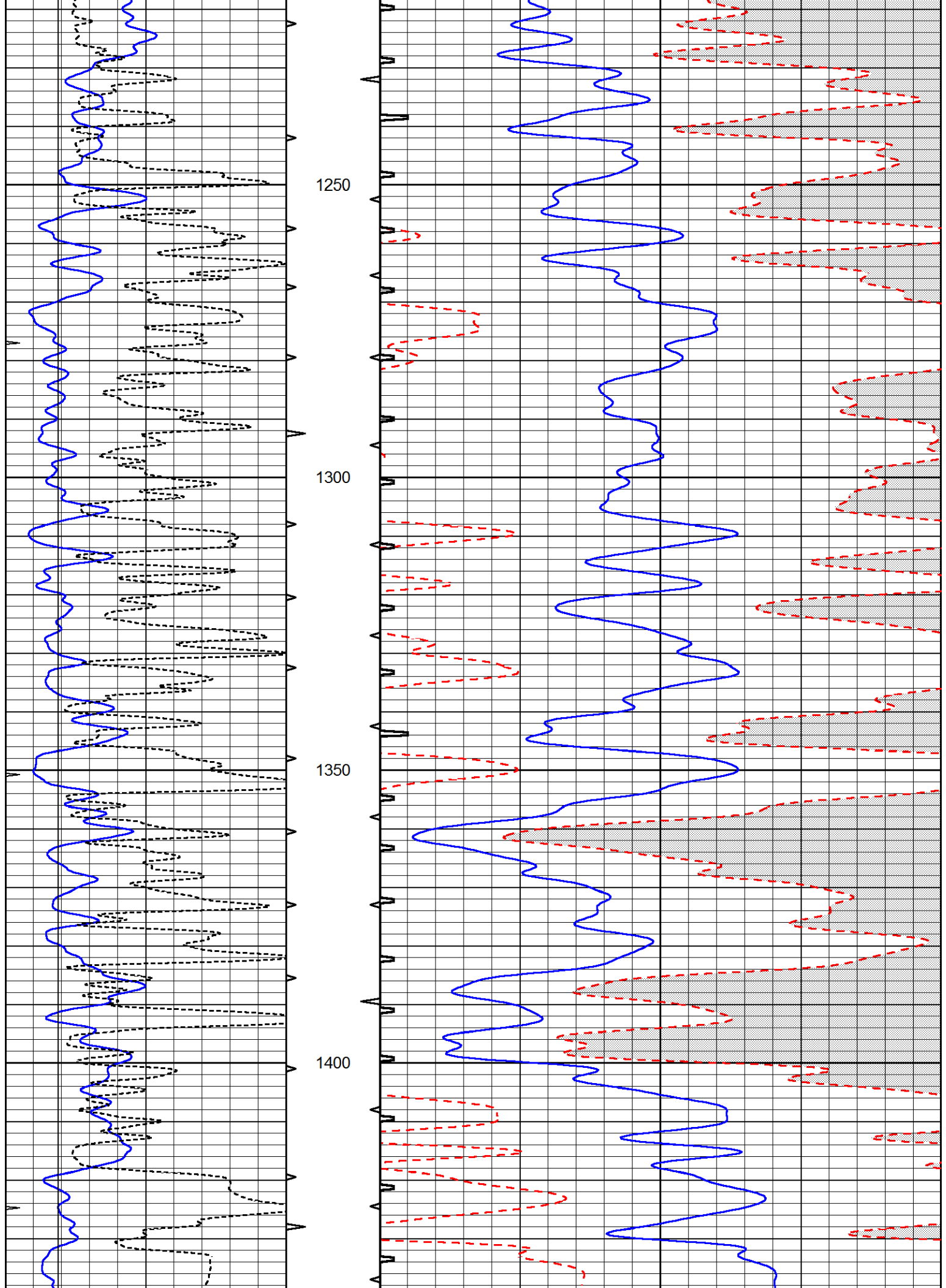
Database File 7426pe.db
 Dataset Pathname pass6.3
 Presentation Format _slt
 Dataset Creation Fri Dec 30 21:00:04 2022
 Charted by Depth in Feet scaled 1:240

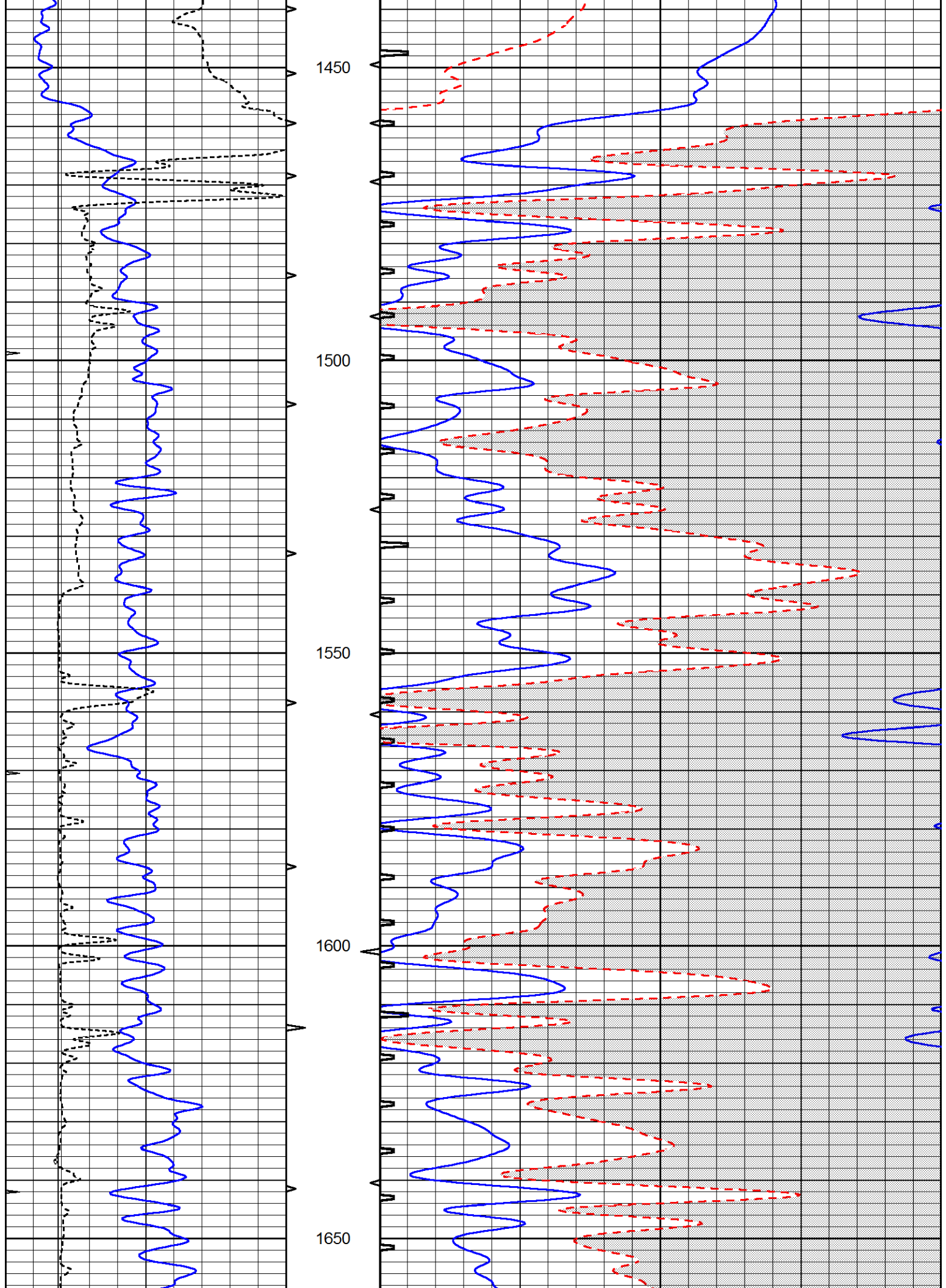
0	GAMMA RAY (GAPI)	150	ABHV	140	DELTA TIME (usec/ft)	40
0	MINMK	20	10 (ft3) 0	30	SONIC POROSITY (pu)	-10
6	MELCAL (in)	16	TBHV	0	ITT (msec)	20
			0 (ft3) 10			

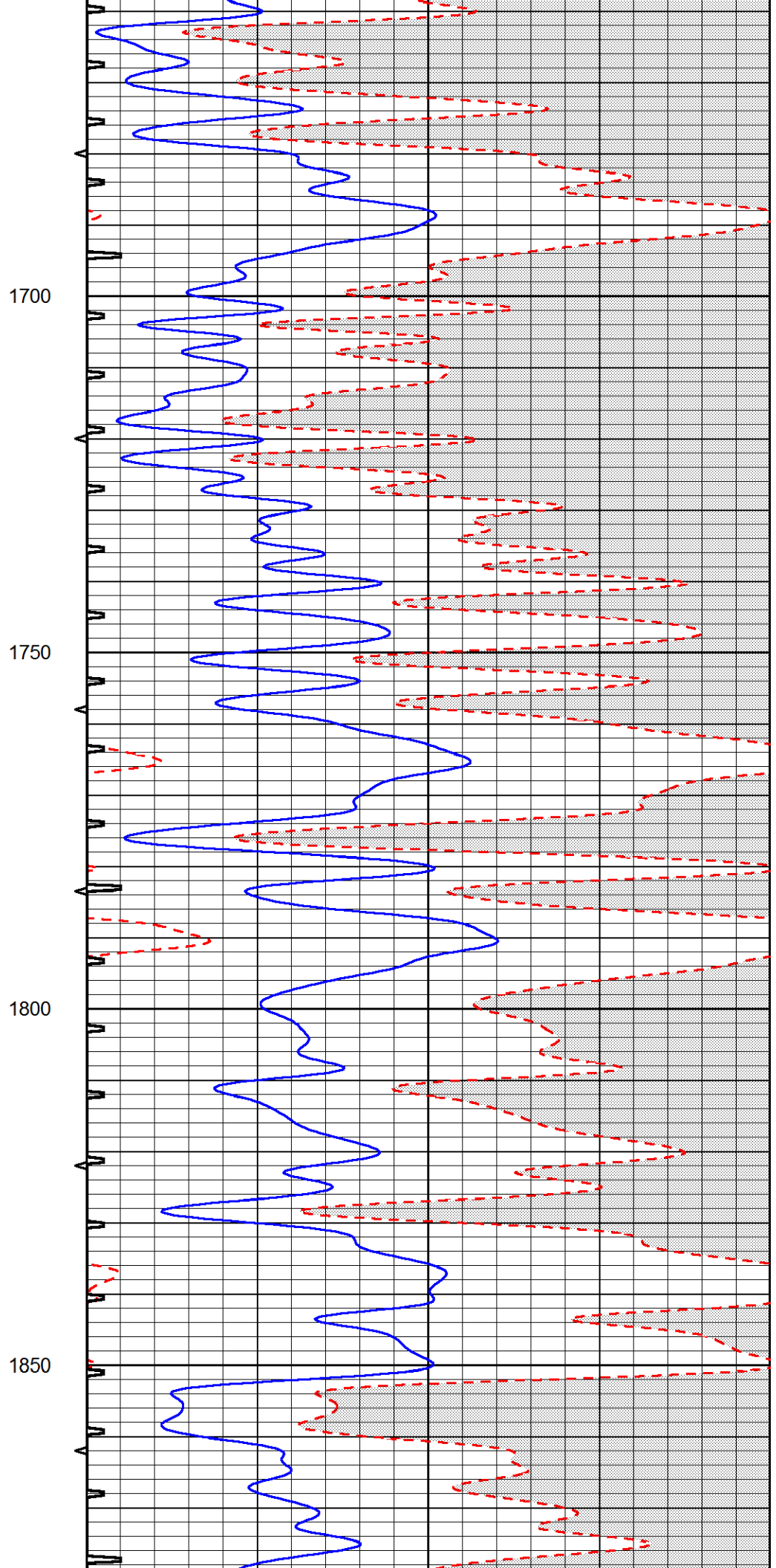
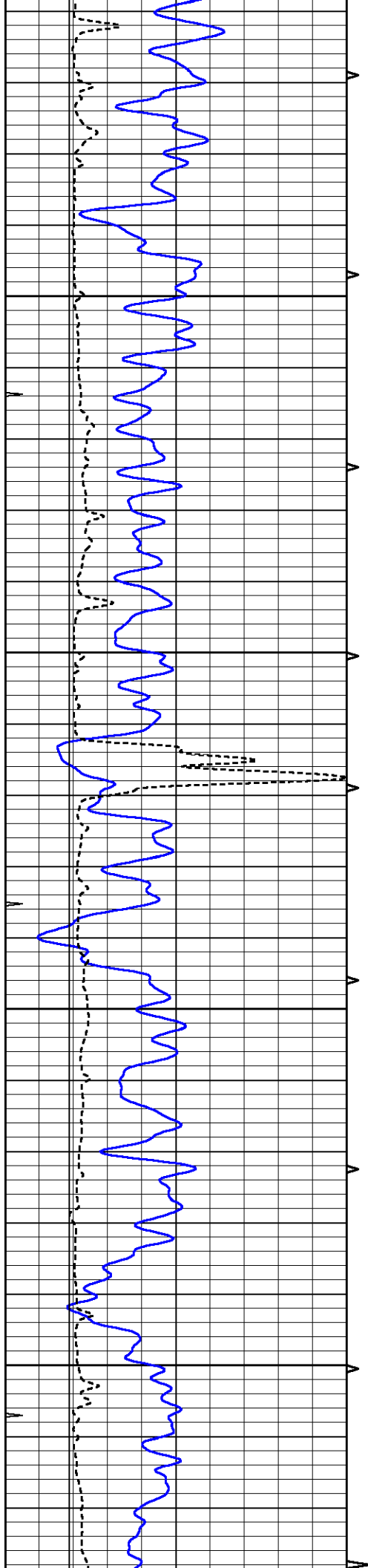


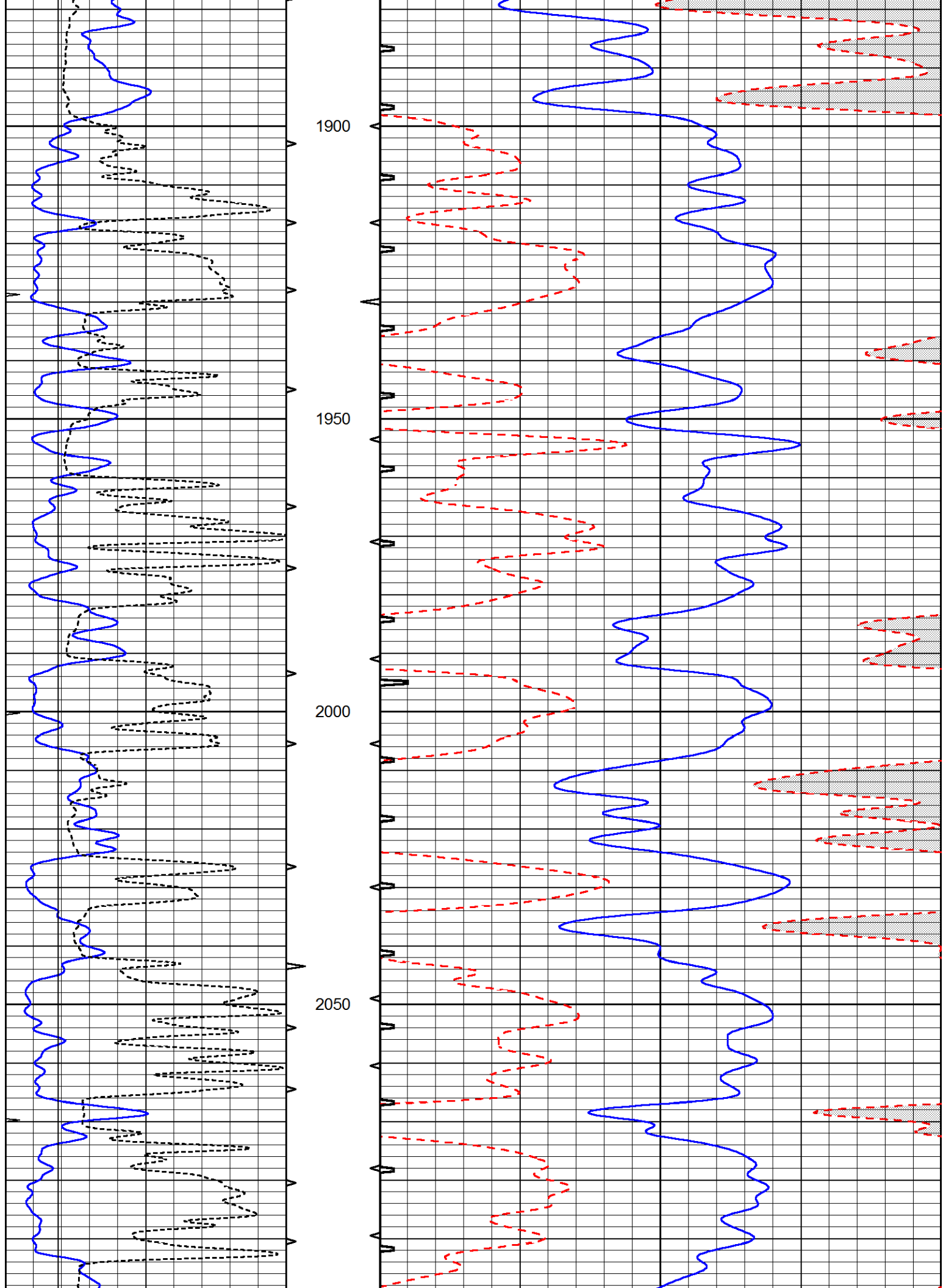


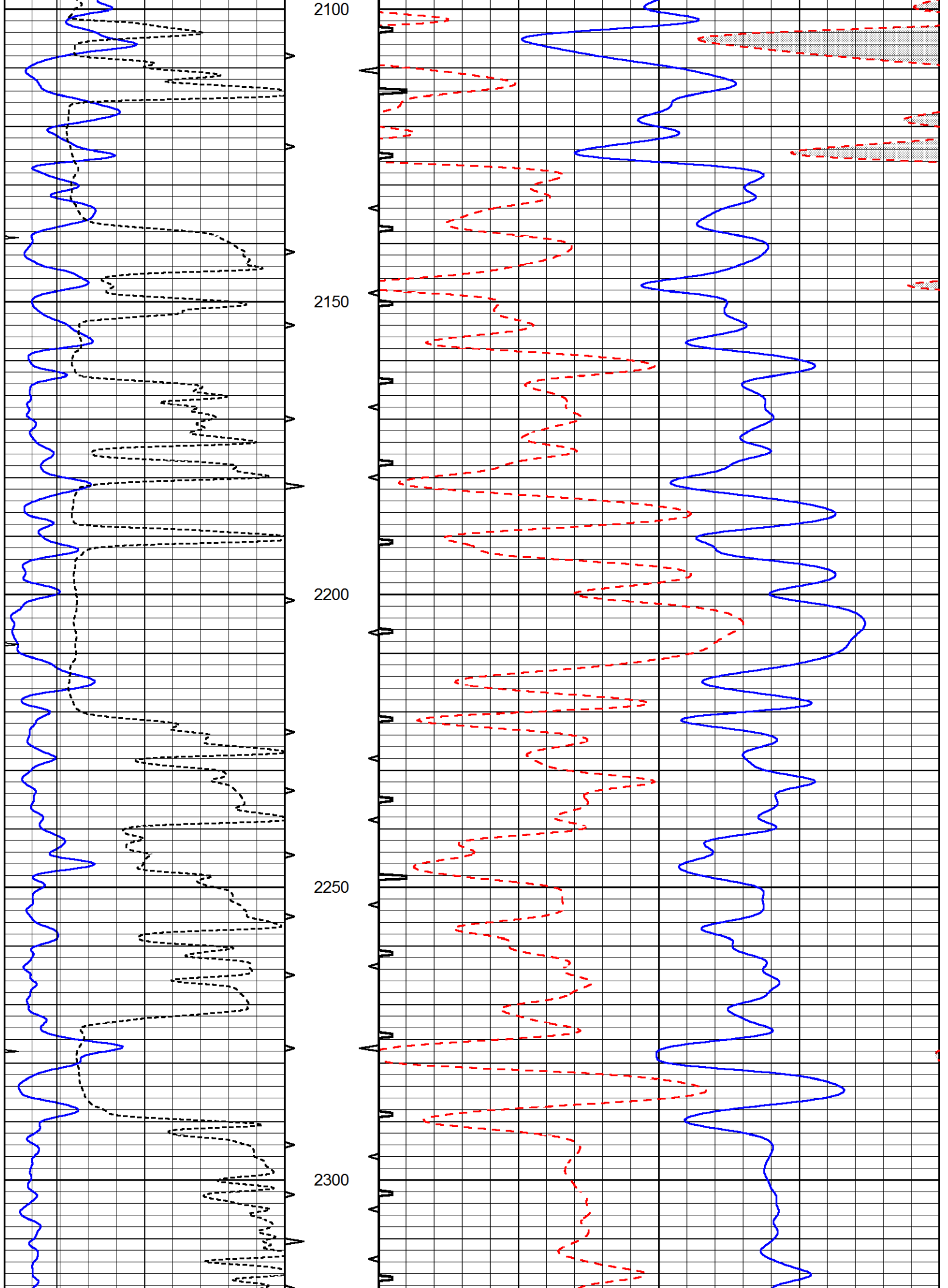


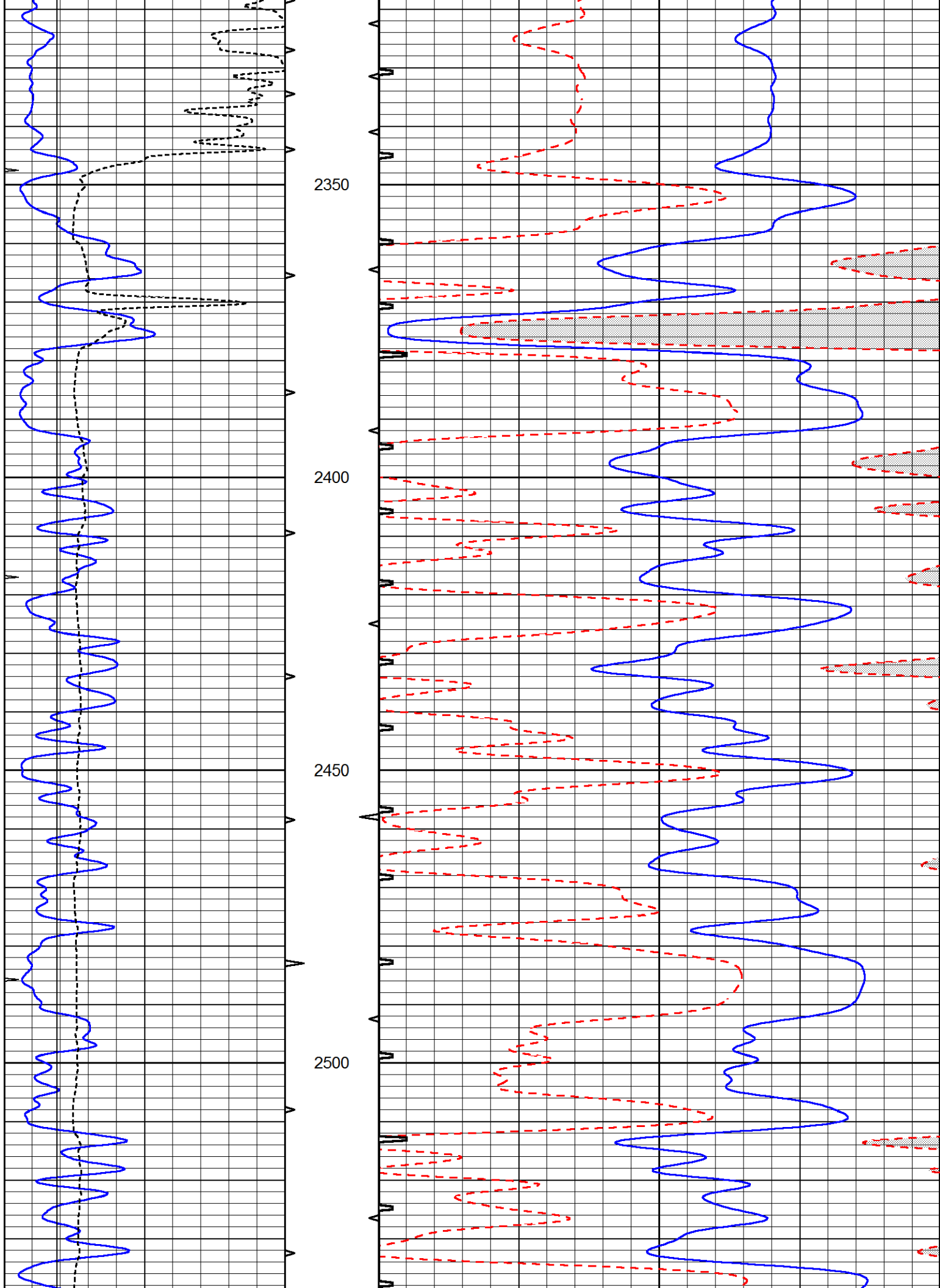


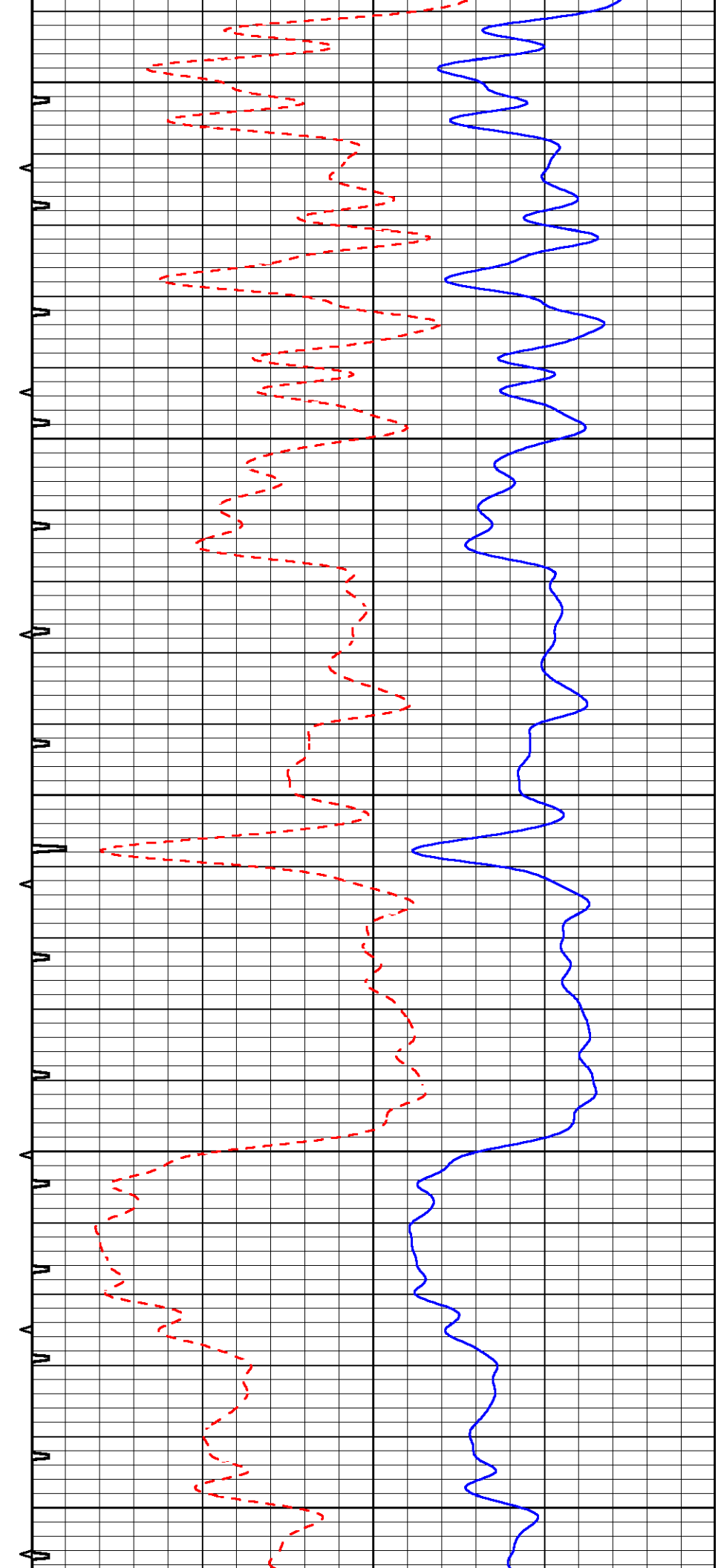
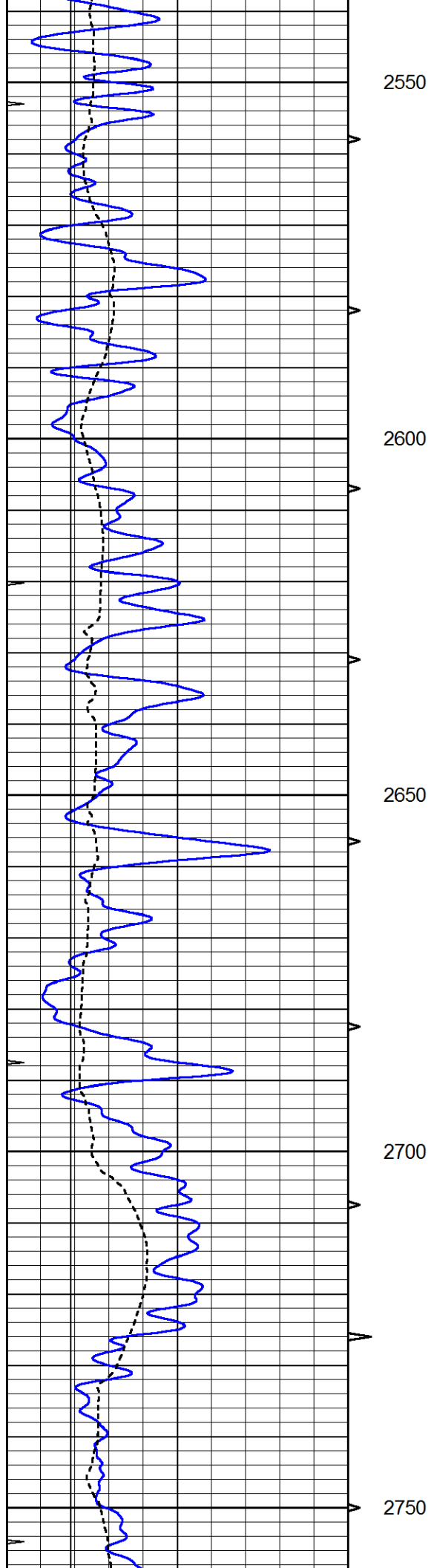


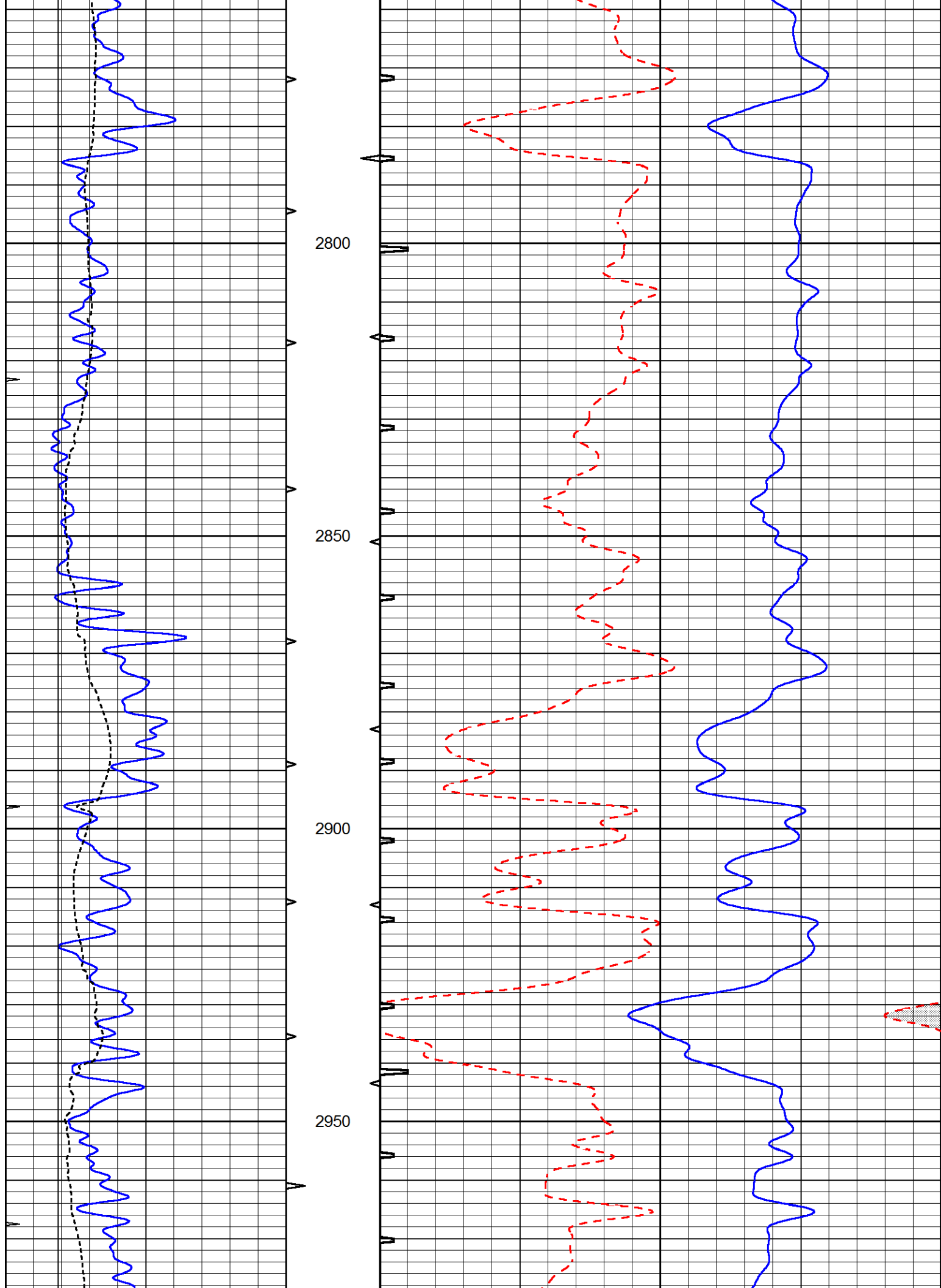


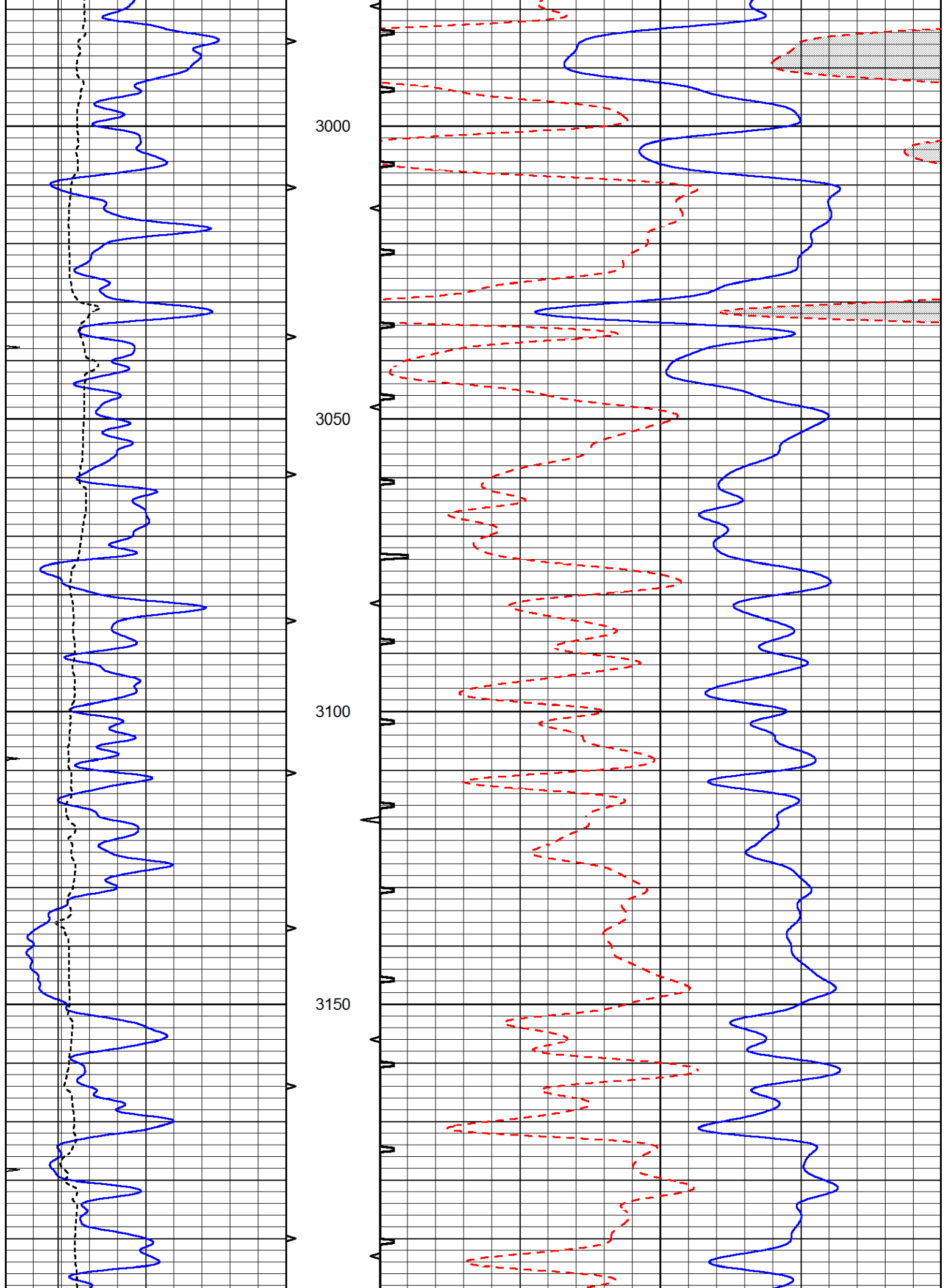


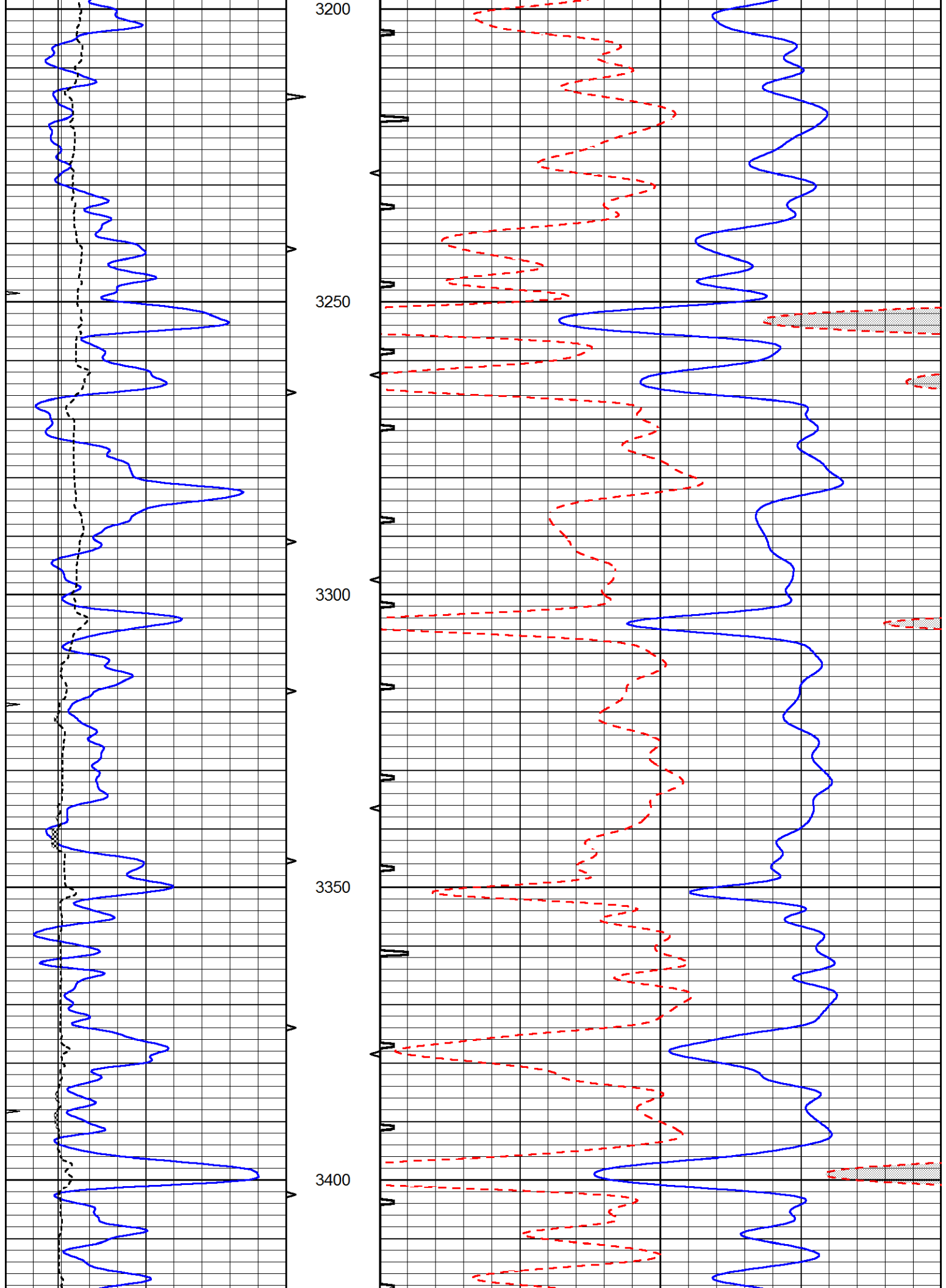


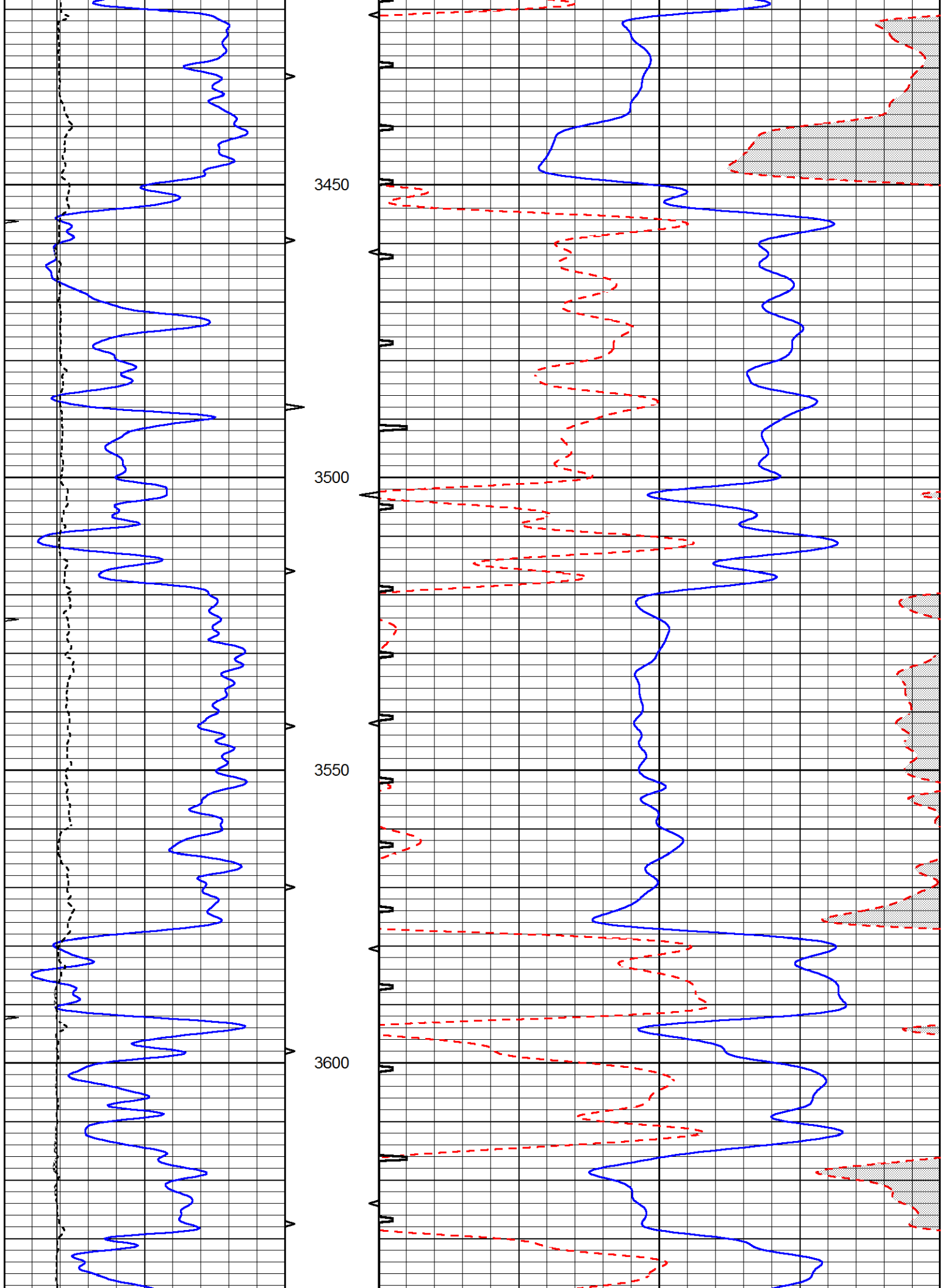


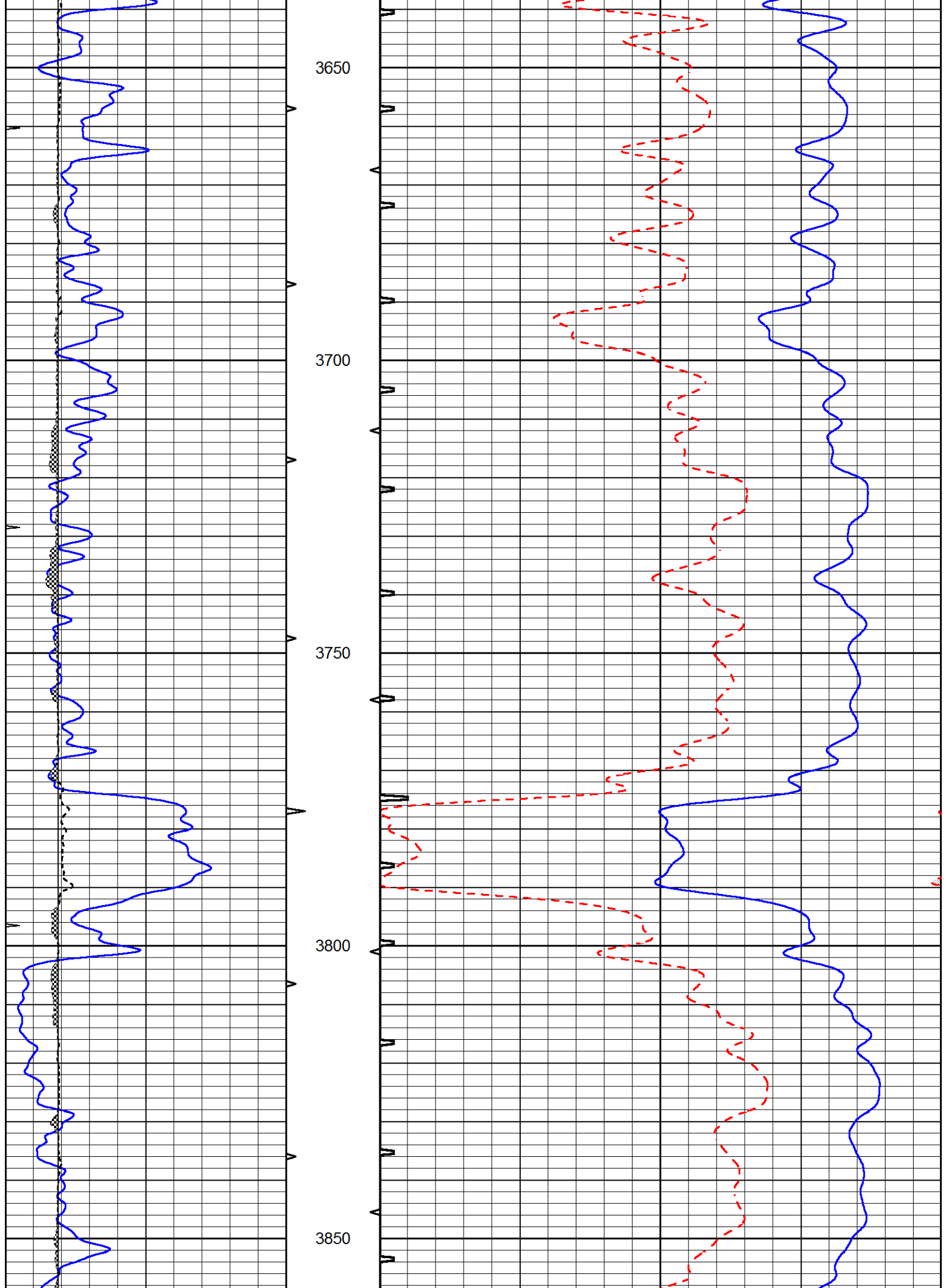


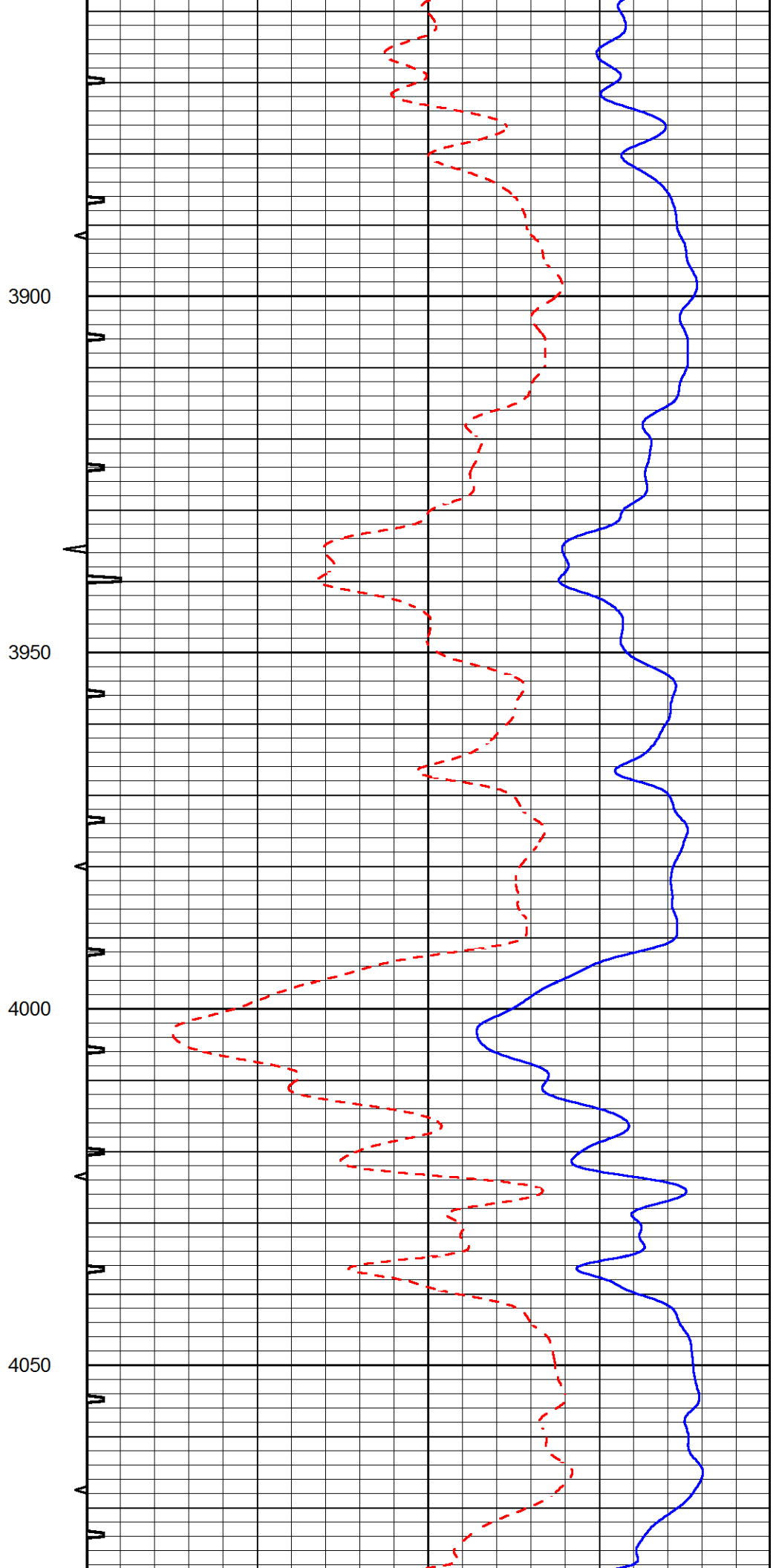
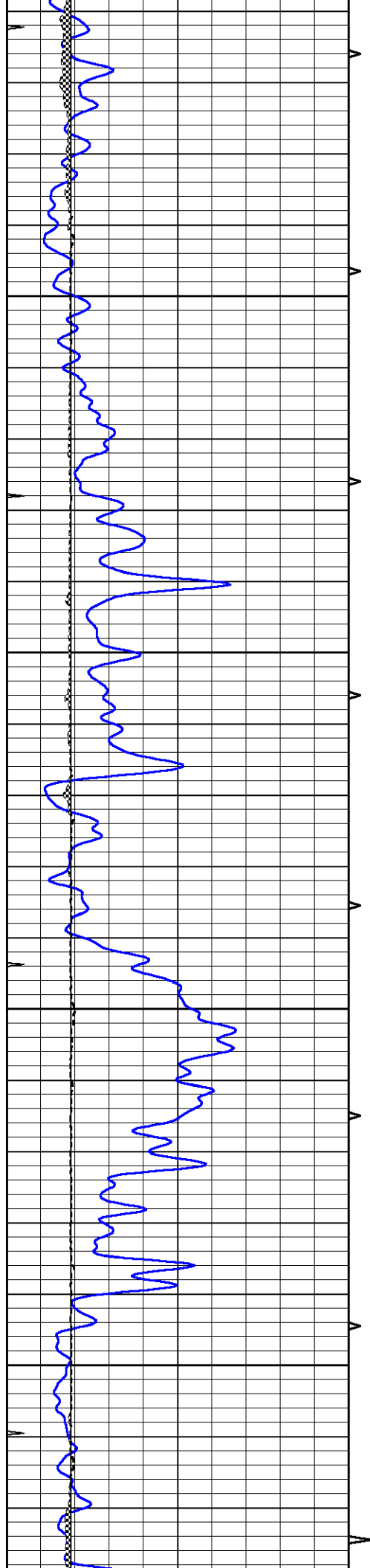


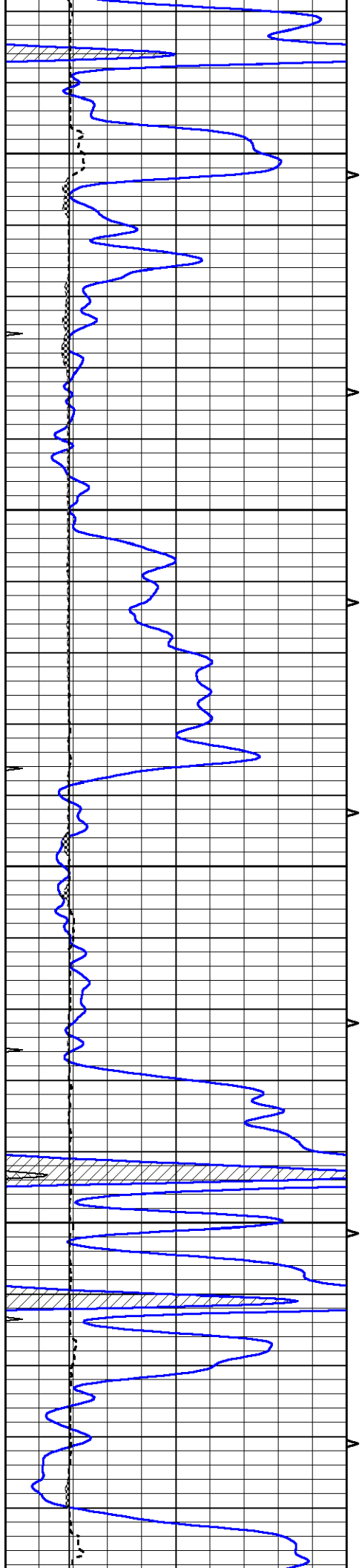










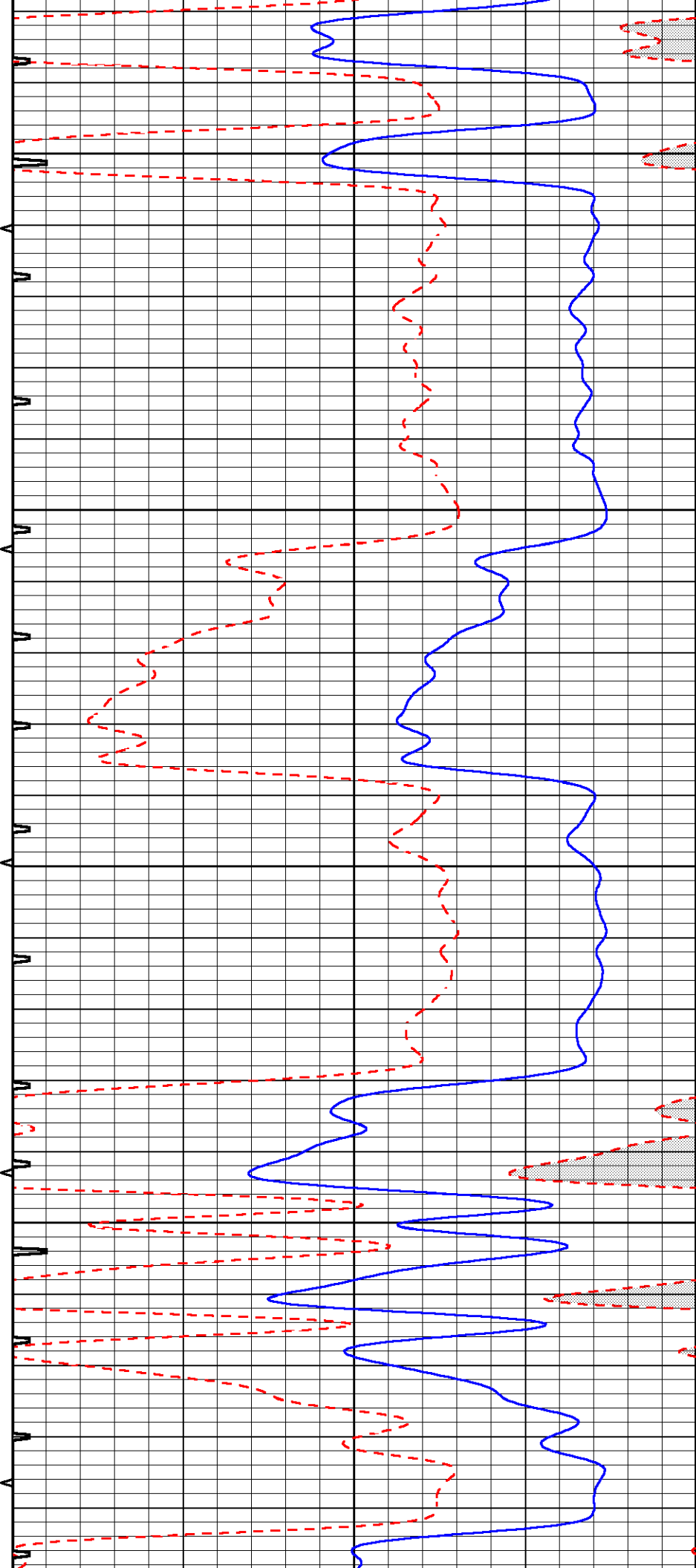


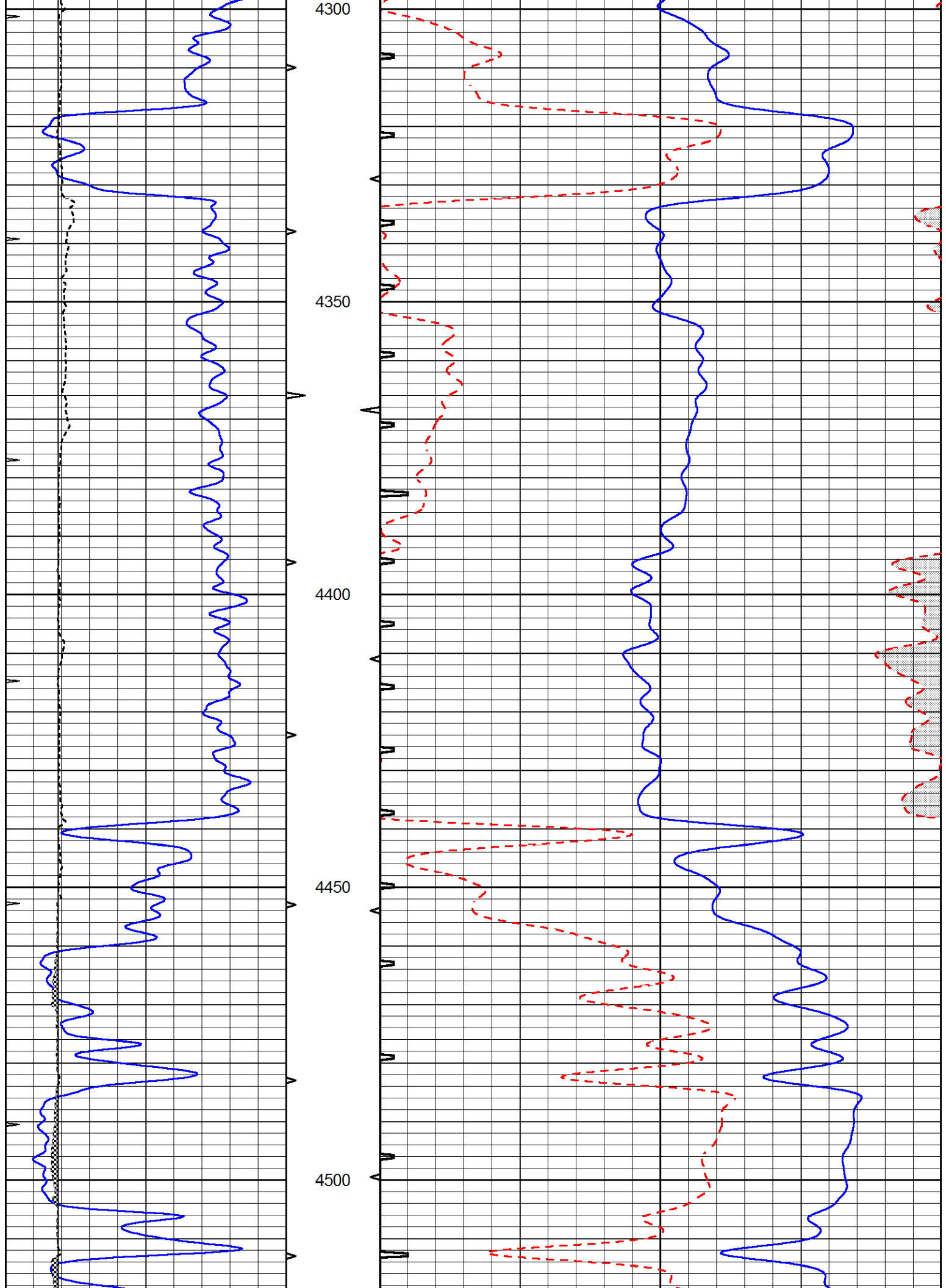
4100

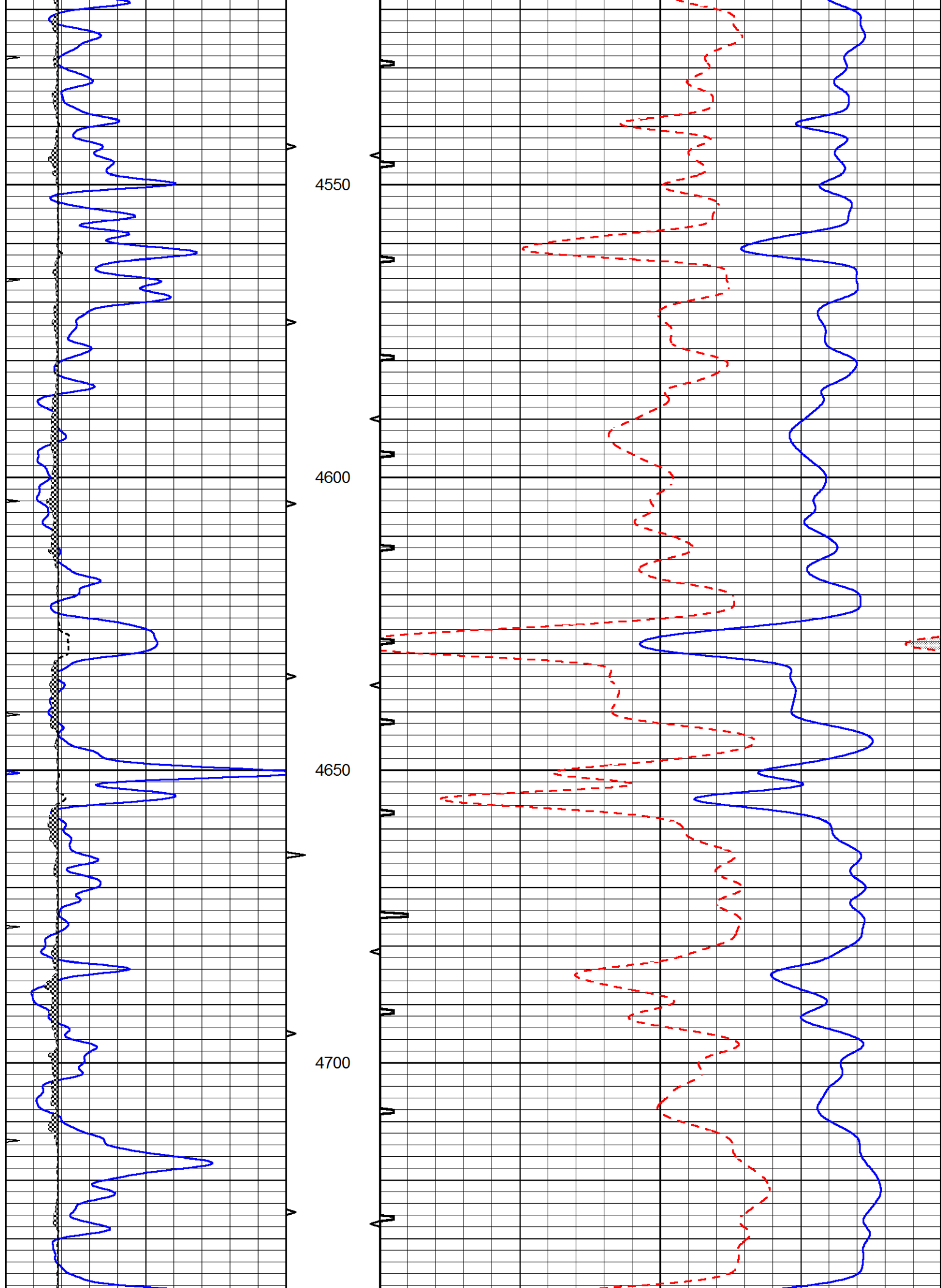
4150

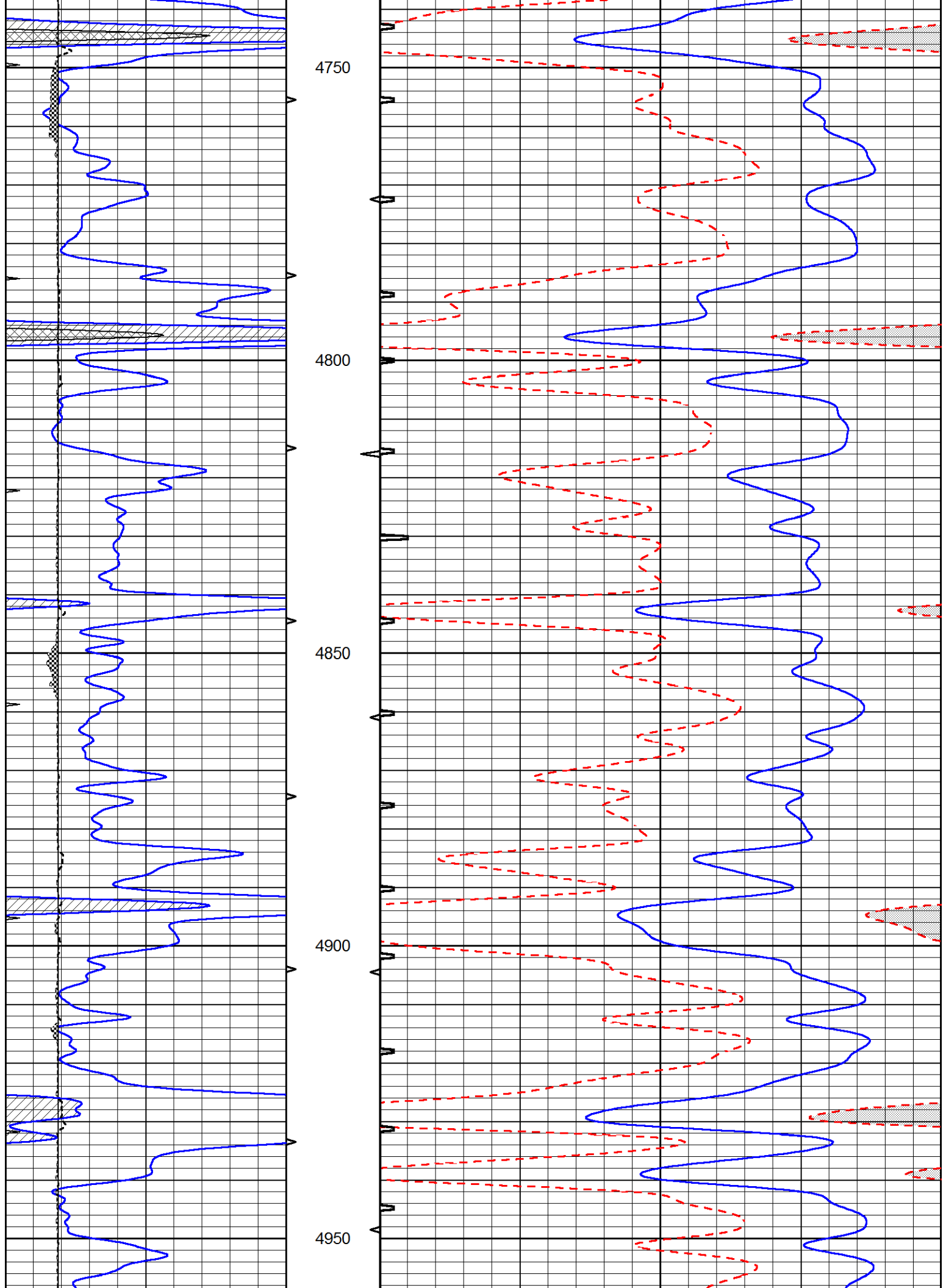
4200

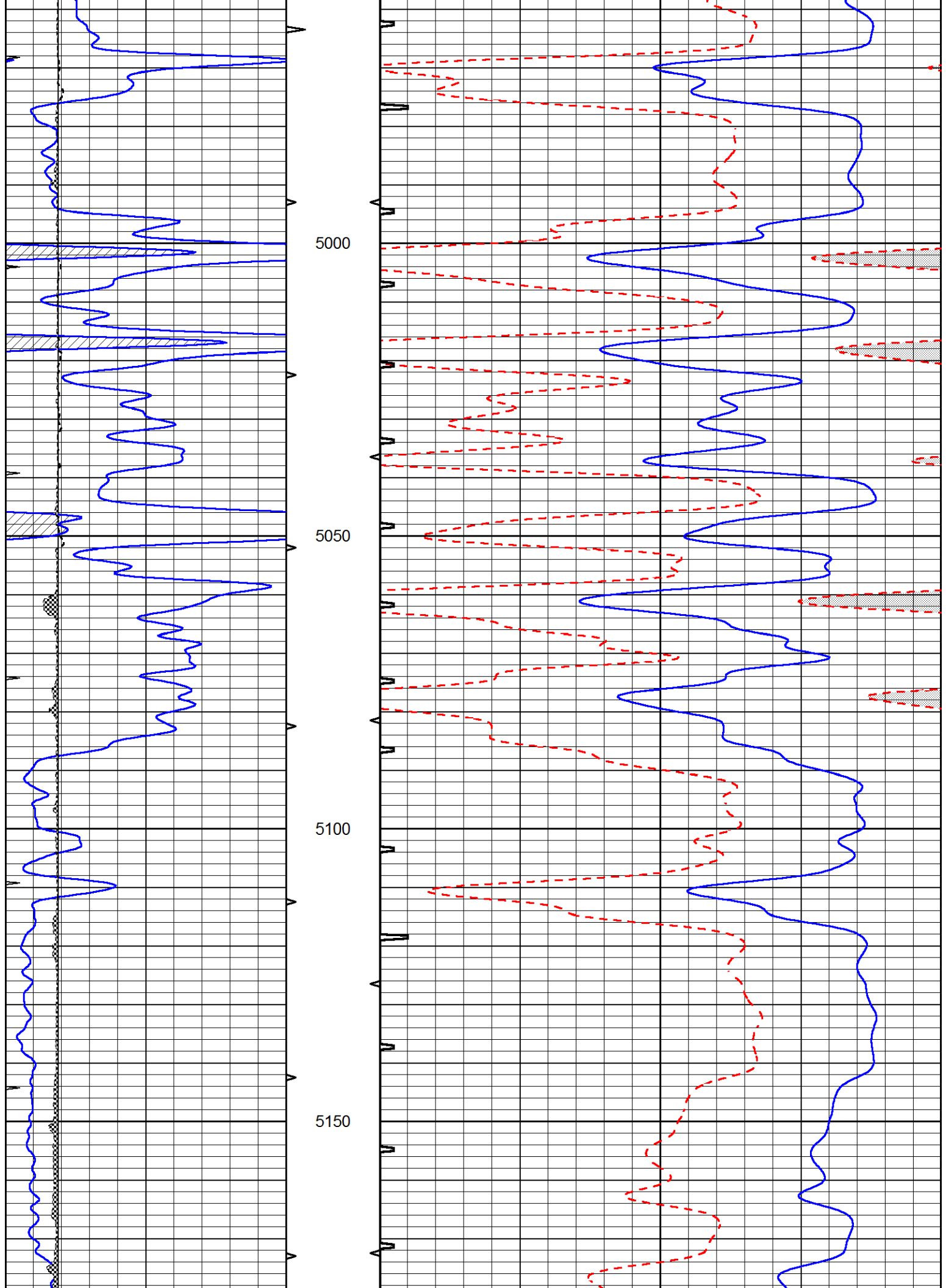
4250

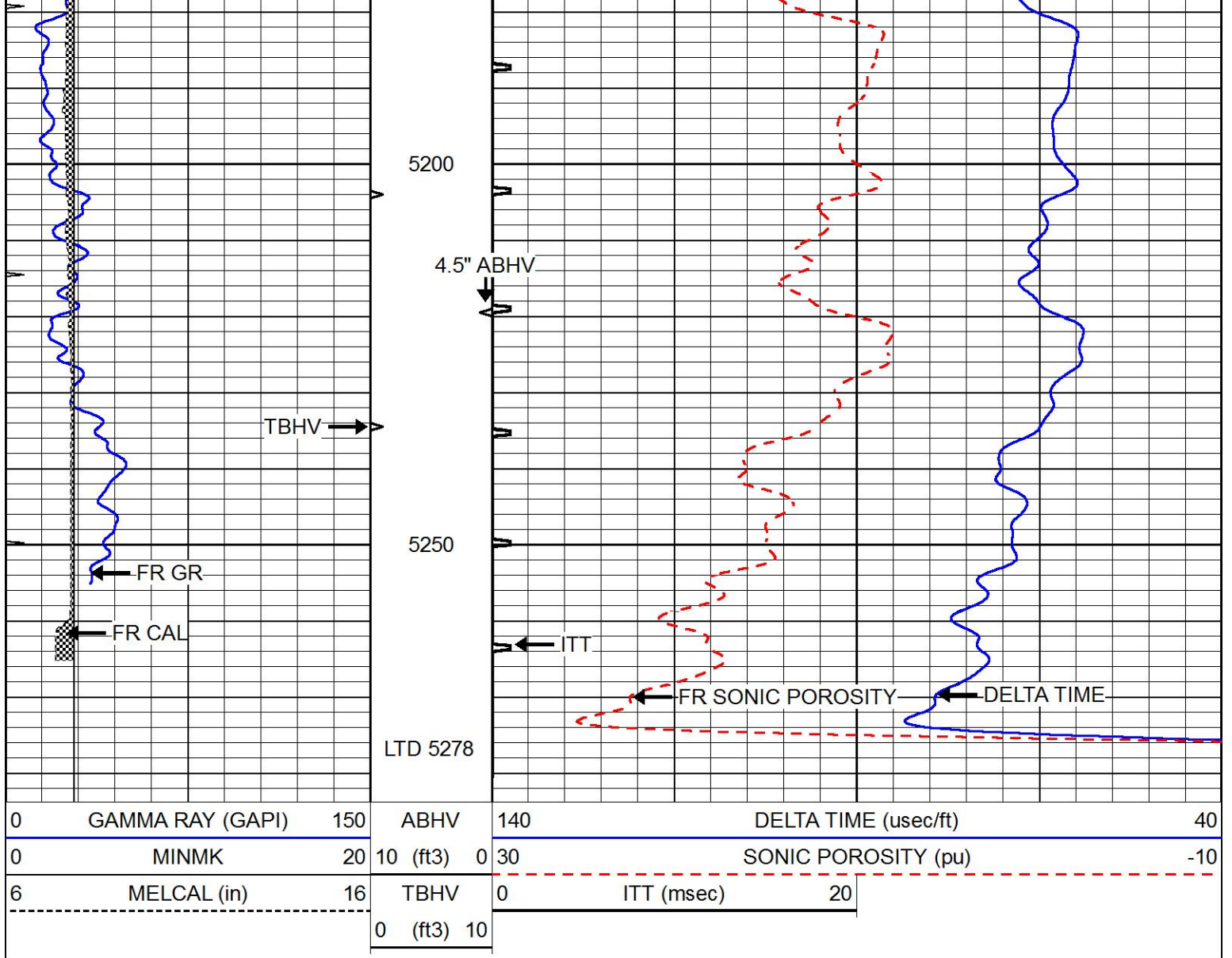






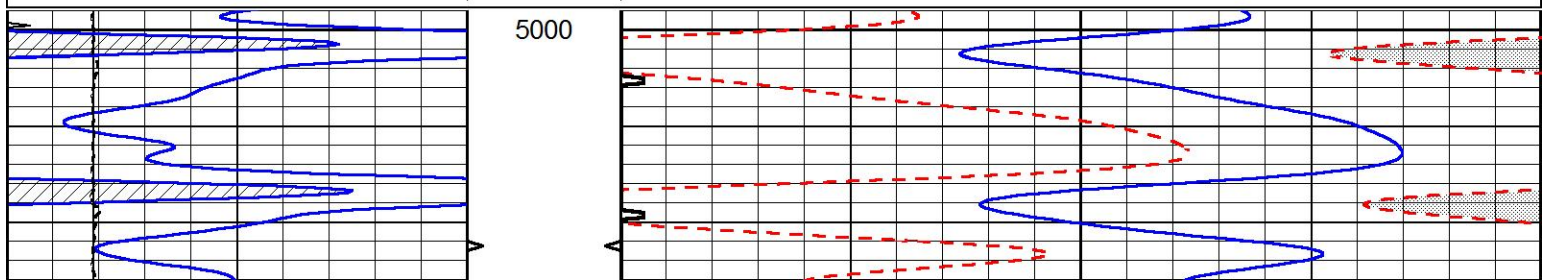
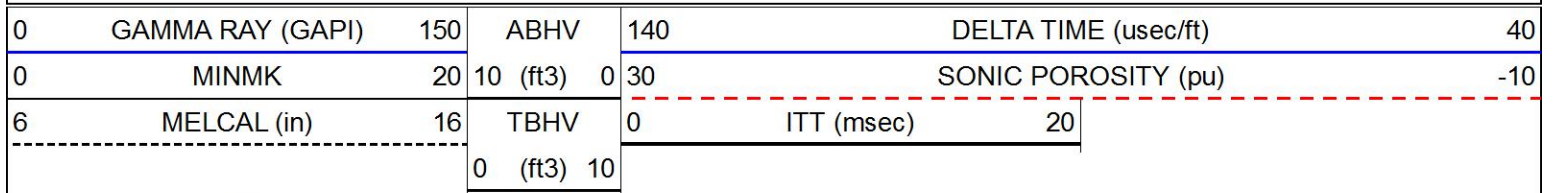


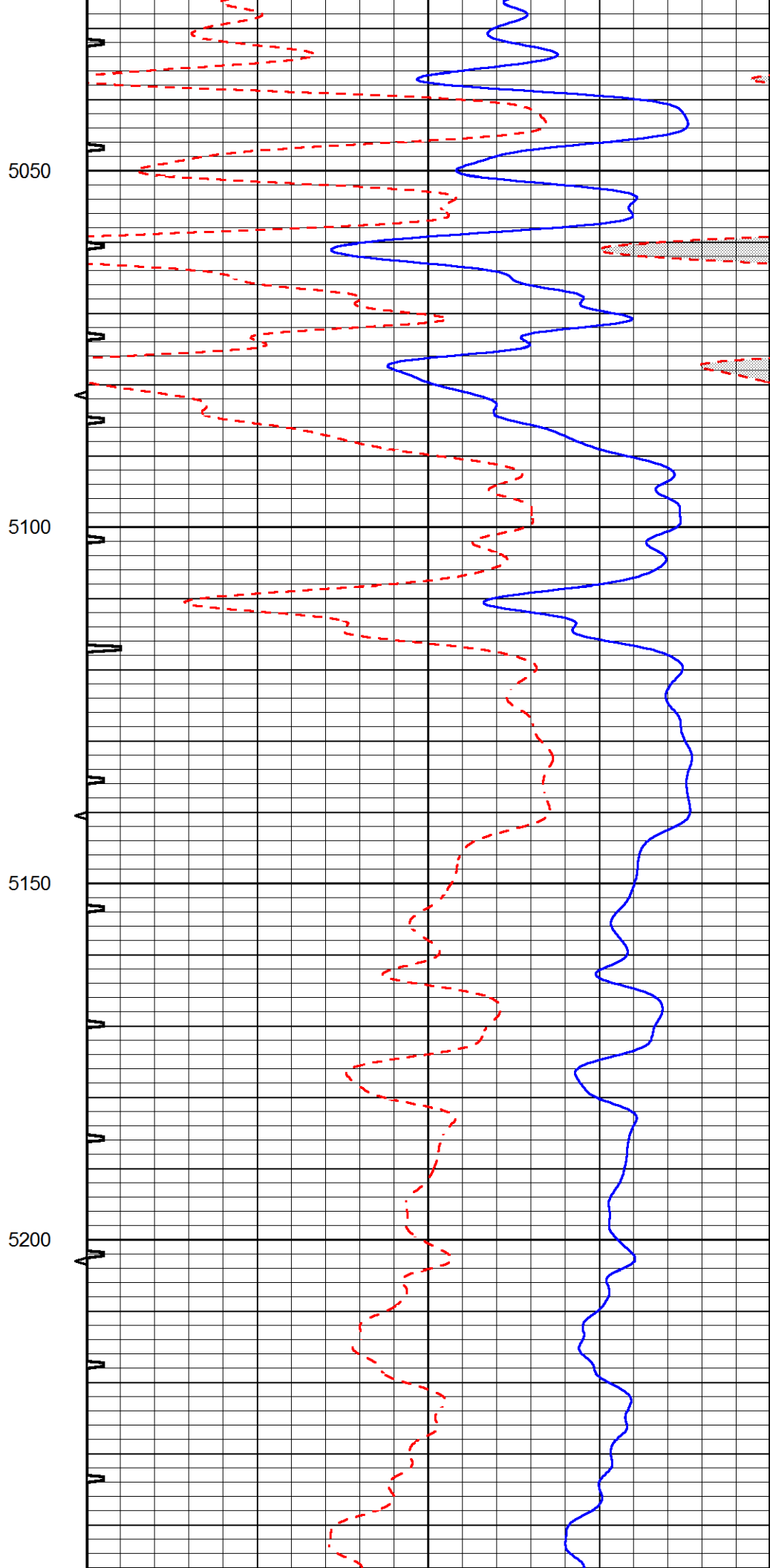
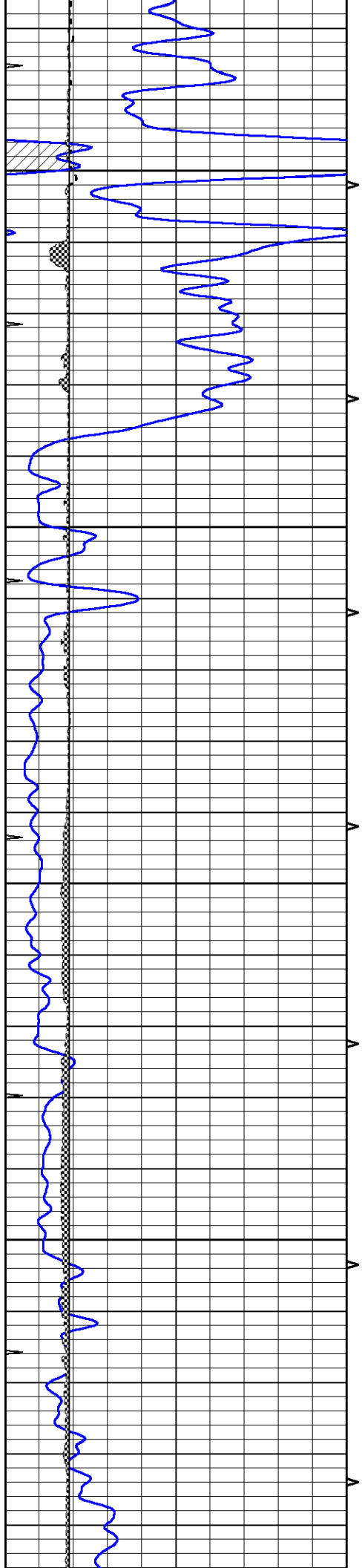




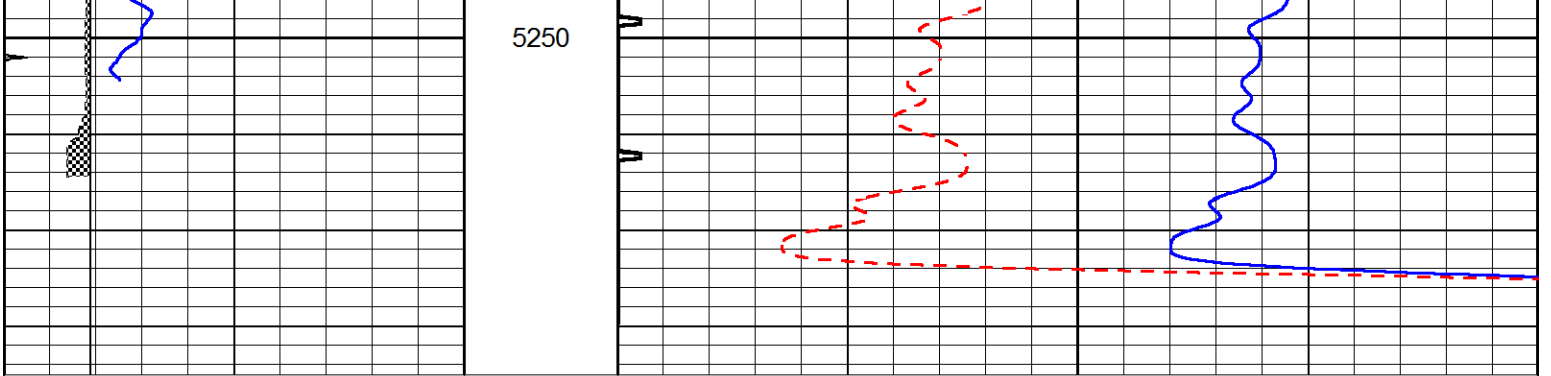
REPEAT SECTION

Database File 7426pe.db
 Dataset Pathname pass5.2
 Presentation Format _slt
 Dataset Creation Fri Dec 30 19:40:41 2022
 Charted by Depth in Feet scaled 1:240





5250



0	GAMMA RAY (GAPI)	150	ABHV	140	DELTA TIME (usec/ft)	40
0	MINMK	20	10 (ft3) 0	30	SONIC POROSITY (pu)	-10
6	MELCAL (in)	16	TBHV	0	ITT (msec)	20
-----			0 (ft3) 10			