



**COMPENSATED  
DENSITY/NEUTRON  
PE LOG**

Company MccOY PETROLEUM CORPORATION  
Well YOHN "A" #4-26  
Field UNNAMED  
County KIOWA  
State KANSAS

Company MccOY PETROLEUM CORPORATION  
Well YOHN "A" #4-26  
Field UNNAMED  
County KIOWA State KANSAS

Location: 2310' FNL & 1650' FWL  
SW - SE - NW  
SEC 26 TWP 30S RGE 19W  
API #: 15-097-21869-0000  
Permanent Datum GROUND LEVEL Elevation 2239  
Log Measured From KELLY BUSHING 11' A.G.L.  
Drilling Measured From KELLY BUSHING  
Other Services DILMEL SONIC  
Elevation K.B. 2250  
D.F. 2248  
G.L. 2239

Date	12/30/22
Run Number	ONE
Depth Driller	5280
Depth Logger	5278
Bottom Logged Interval	5254
Top Log Interval	4200
Casing Driller	8 5/8"@634'
Casing Logger	636
Bit Size	7 7/8"
Type Fluid in Hole	CHEMICAL MUD
Density / Viscosity	9.4/53
pH / Fluid Loss	11.0/7.2
Source of Sample	FLOWLINE
Rm @ Meas. Temp	.950@74F
Rmf @ Meas. Temp	.713@74F
Rmc @ Meas. Temp	1.14@74F
Source of Rmf / Rmc	MEASURED
Rm @ BHT	.549@128F
Time Circulation Stopped	3 HOURS
Time Logger on Bottom	4.45 P.M.
Maximum Recorded Temperature	128F
Equipment Number	8916
Location	HAYS, KANSAS
Recorded By	JEFF LUEBBERS
Witnessed By	BLAKE MILLER

<<< Fold Here >>>

All interpretations are opinions based on inferences from electrical or other measurements and we cannot and do not guarantee the accuracy or correctness of any interpretation, and we shall not, except in the case of gross or willful negligence on our part, be liable or responsible for any loss, costs, damages, or expenses incurred or sustained by anyone resulting from any interpretation made by any of our officers, agents or employees. These interpretations are also subject to our general terms and conditions set out in our current Price Schedule.

Comments

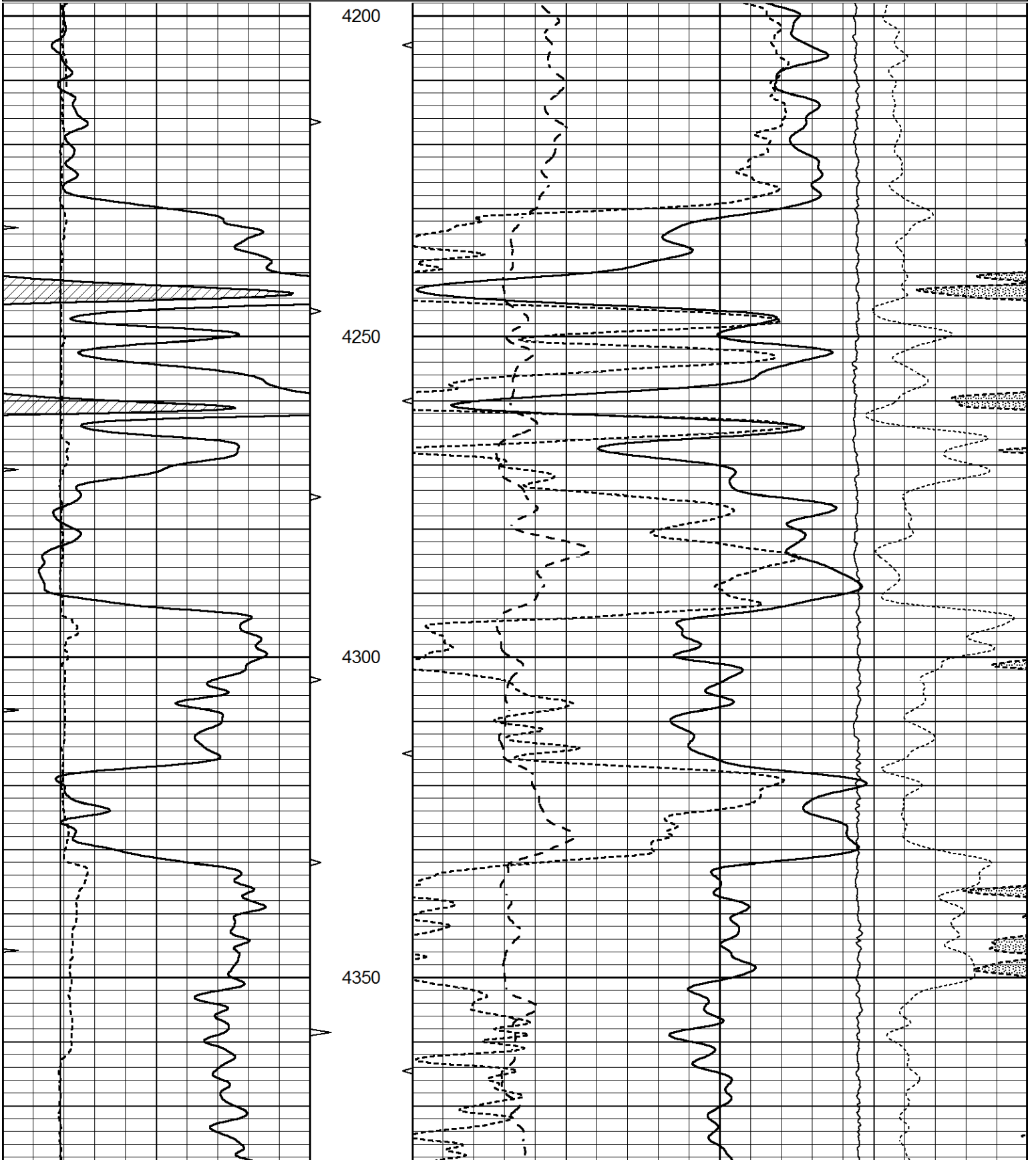
THANK YOU FOR USING ELI WIRELINE, HAYS, KS. (785) 628-6395  
DIRECTIONS:  
COLDWATER, KS., N. ON HWY 183 TO (COMANCHE/KIOWA COUNTY LINE) 3W. ON "A RD.", TO  
"21ST. AVE" 1 1/2 N., E. INTO

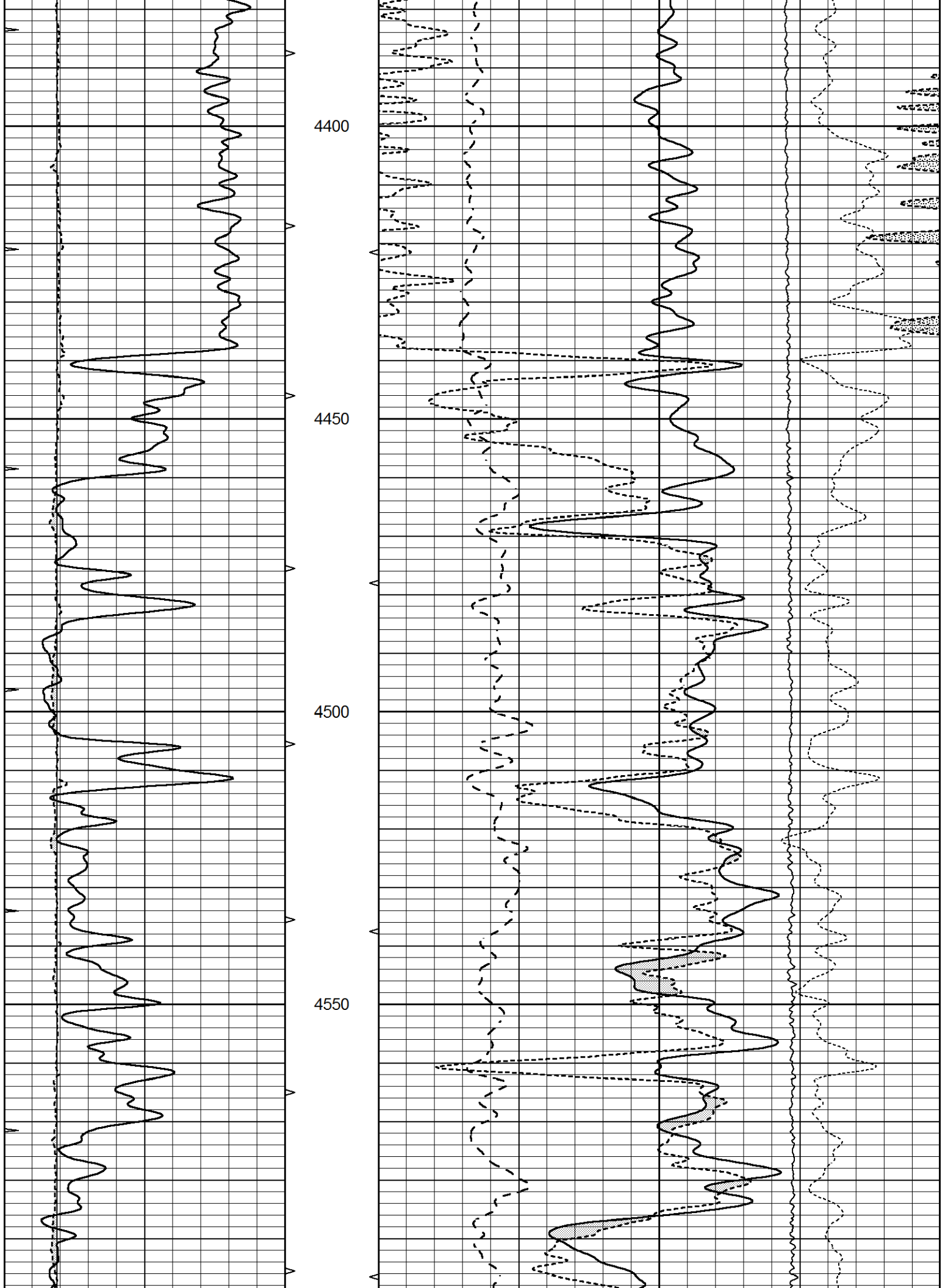


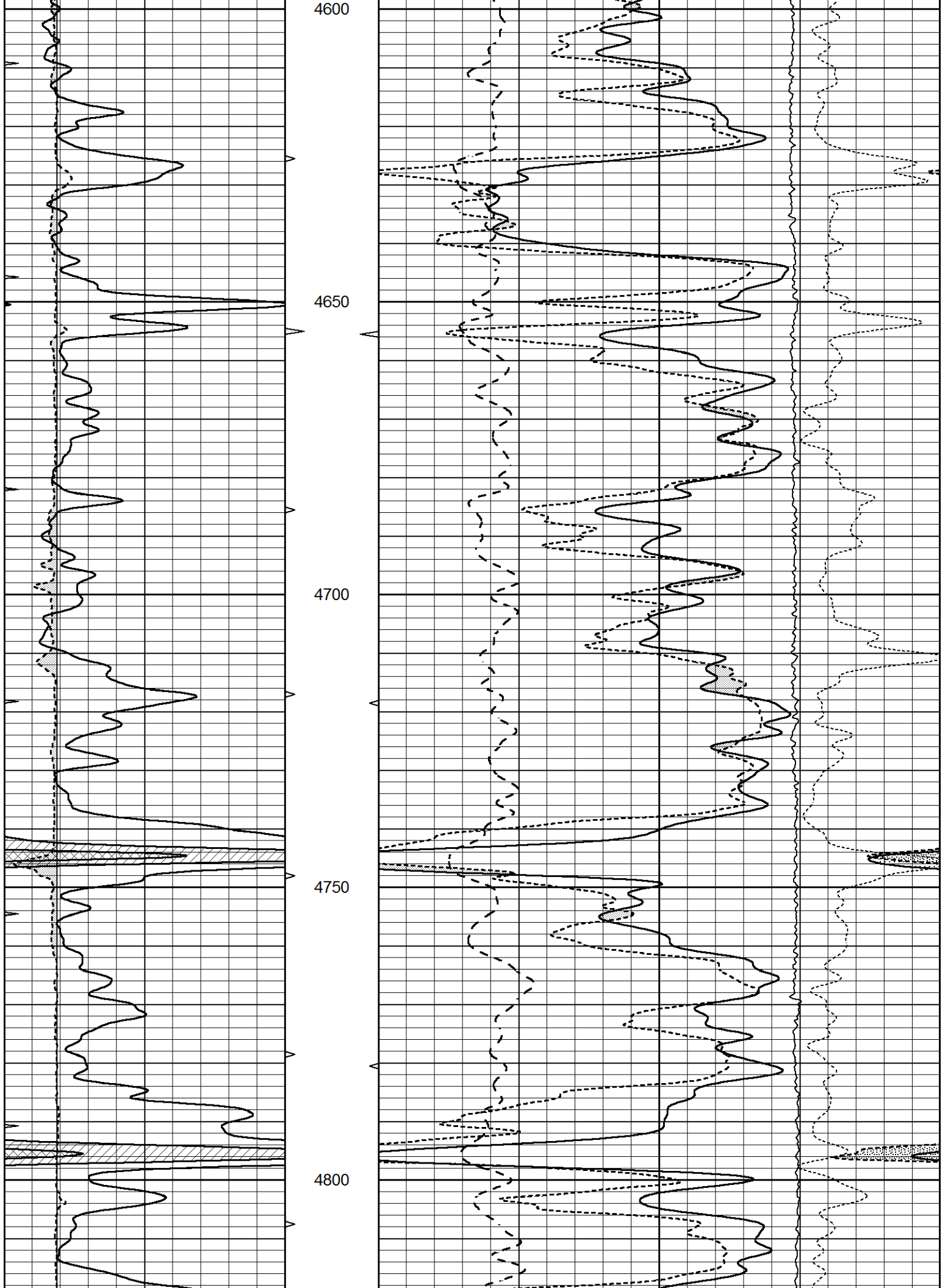
# MAIN SECTION

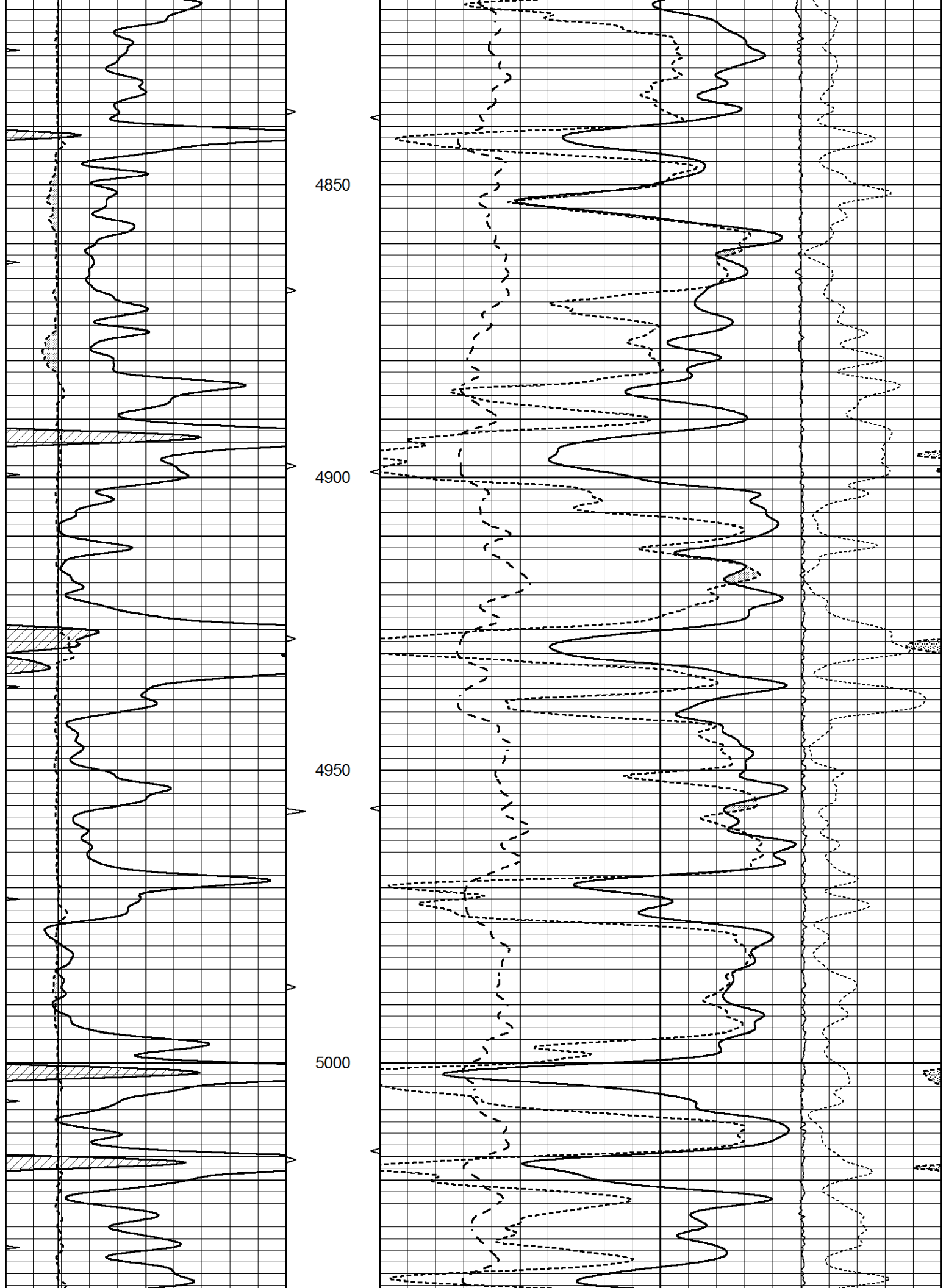
Database File 7426pe.db  
 Dataset Pathname pass3.1M  
 Presentation Format ldt\_neu  
 Dataset Creation Fri Dec 30 18:50:07 2022  
 Charted by Depth in Feet scaled 1:240

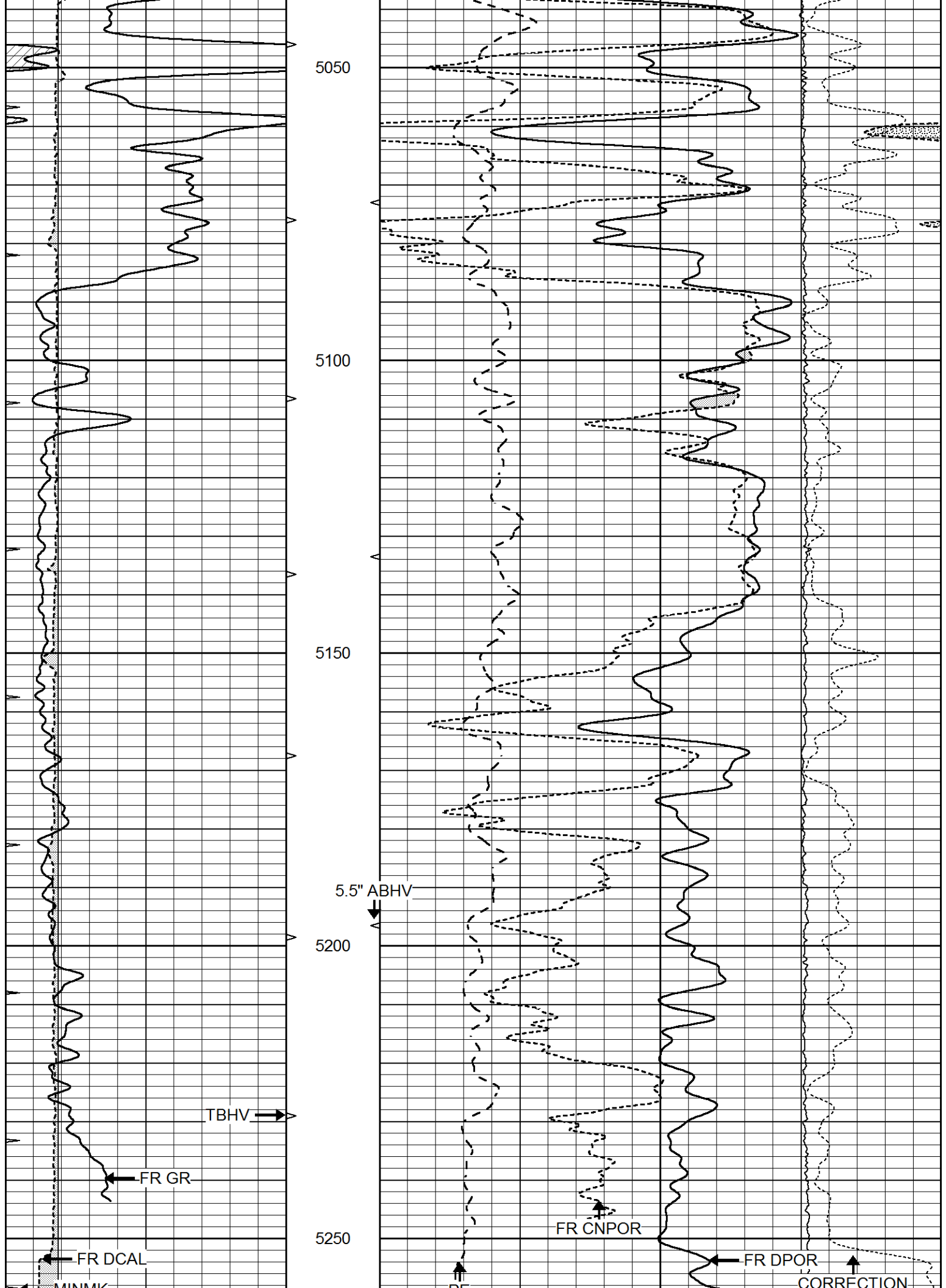
0	GAMMA RAY (GAPI)	150	ABHV	30	COMPENSATED DENSITY (pu)		-10
6	CALIPER (in)	16	10 (ft3)	0	COMPENSATED NEUTRON (pu)		-10
0	MINMK	20	TBHV	0	PE	10	0
			0 (ft3)	10			LTEN (lb)
							-0.25
							CORRECTION (g/cc)
							0.25

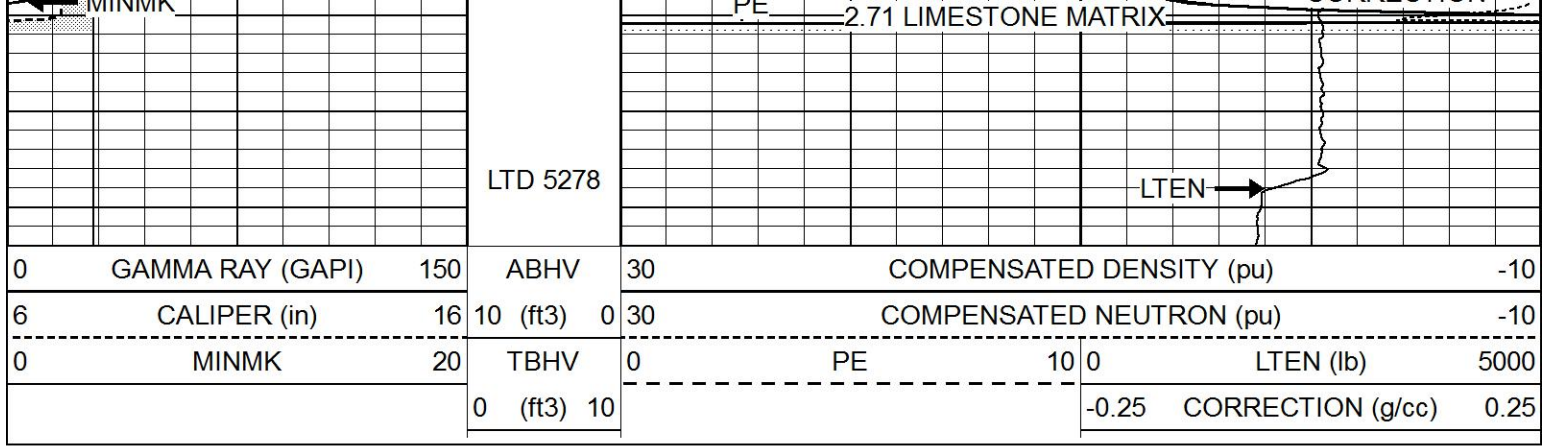






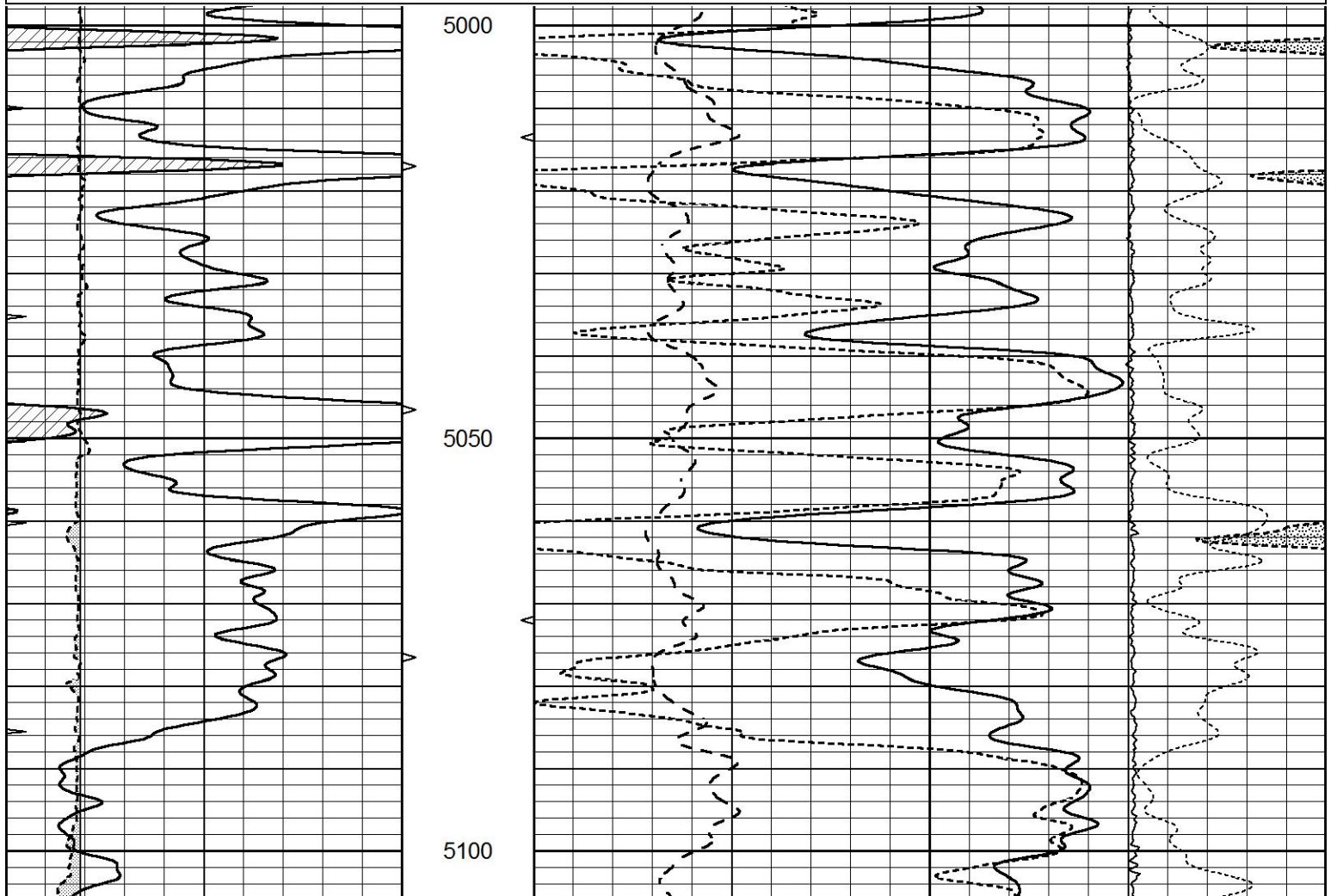
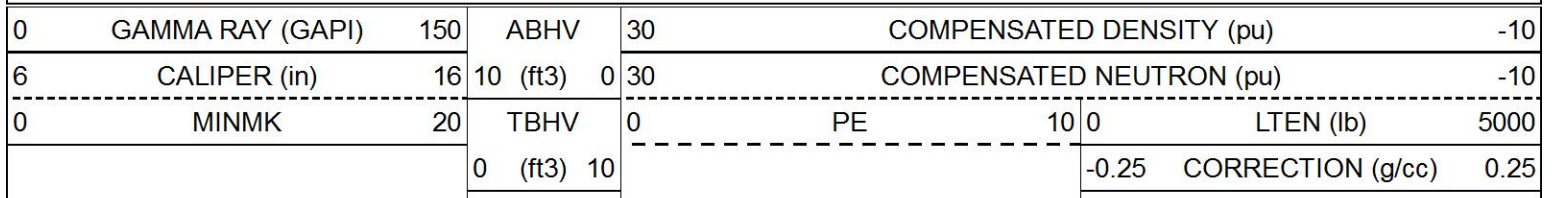


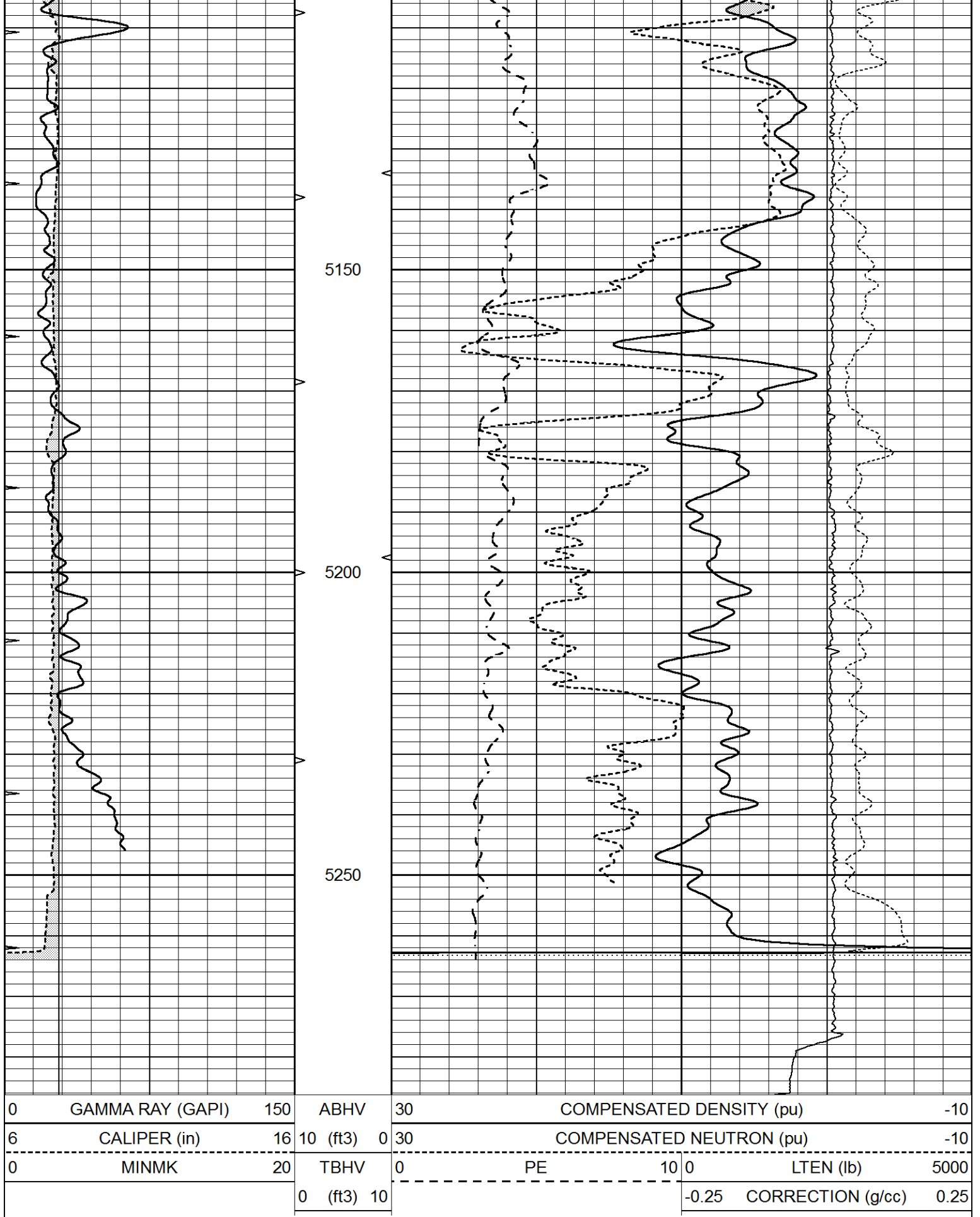




# REPEAT SECTION

Database File 7426pe.db  
 Dataset Pathname pass2.1R  
 Presentation Format ldt\_neu  
 Dataset Creation Fri Dec 30 18:52:46 2022  
 Charted by Depth in Feet scaled 1:240





Calibration Report

Database File 7426pe.db  
 Dataset Pathname pass3.1M  
 Dataset Creation Fri Dec 30 18:50:07 2022

Dual Induction Calibration Report

Serial-Model: PROBE8-DILG  
 Surface Cal Performed: Fri Dec 30 17:20:13 2022  
 Downhole Cal Performed: Mon Sep 10 14:28:38 2018  
 After Survey Verification Performed: Mon Sep 10 14:28:40 2018

Surface Calibration

Loop:	Readings			References			Results	
	Air	Loop	V	Air	Loop	mmho/m	m	b
Deep	0.015	0.648	V	0.000	400.000	mmho/m	620.000	4.000
Medium	0.029	0.796	V	0.000	464.000	mmho/m	620.000	-10.000
Internal:	Zero	Cal		Zero	Cal		m	b
Deep	0.017	0.657	V	0.000	400.000	mmho/m	625.153	-10.619
Medium	0.016	0.757	V	0.000	464.000	mmho/m	625.992	-9.739

Downhole Calibration

	Readings			References			Results	
	Zero	Cal	mmho/m	Zero	Cal	mmho/m	m'	b'
Deep	0.000	0.000	mmho/m	2.011	405.777	mmho/m	1.000	0.000
Medium	0.000	0.000	mmho/m	7.590	503.393	mmho/m	1.000	0.000
LL3		7.500	V		1500.000	Ohm-m		
		0.000	V		20.000	Ohm-m		
		-7.200	V		3800.000	mmho-m		

After Survey Verification

	Readings			Targets			Results	
	Zero	Cal	mmho/m	Zero	Cal	mmho/m	m'	b'
Deep	0.000	0.000	mmho/m	0.000	0.000	mmho/m	0.000	0.000
Medium	0.000	0.000	mmho/m	0.000	0.000	mmho/m	0.000	0.000
LL3		1.000	Ohm-m		1.000	Ohm-m		
		0.000	Ohm-m		0.000	Ohm-m		
		1.000	mmho-m		1.000	mmho-m		

Litho Density Calibration Report

Serial: 004 Model: PRB

Master Calibration

Performed Fri Nov 04 15:19:59 2022

	Background	Magnesium	Aluminum	Aluminum+Fe	
Window 1	1153.2	7232.1	2536.8	2279.5	cps
Window 2	1055.6	6225.5	2222.3	2030.5	cps
Window 3	902.5	3849.3	1546.4	1462.0	cps
Window 4	254.4	258.2	253.1	253.9	cps
Long Space	0.0	5169.9	1166.7	974.9	cps
Short Space	4.7	1383.0	950.5	792.1	cps
Rho		1.7100	2.5900	0.0000	g/cc
Pe		2.0000	2.7500	5.7900	
Rib Angle	: 45.9	Rib Slope	: 1.031	Density/Spine Ratio	: 0.573
Spine Angle	: 75.9	Spine Slope	: 3.970	Spine Intercept	: -20.2

Before Survey Verification

Performed Wed Dec 31 18:00:00 1969

Window 1	0.0	0.0	0.0	0.0	cps
----------	-----	-----	-----	-----	-----

Window 2	0.0	0.0	0.0	0.0	cps
Window 3	0.0	0.0	0.0	0.0	cps
Window 4	0.0	0.0	0.0	0.0	cps
Long Space	0.0	0.0	0.0	0.0	cps
Short Space	0.0	0.0	0.0	0.0	cps
Measured Rho		0.0000	0.0000	0.0000	g/cc
Measured Correction		0.0000	0.0000	0.0000	g/cc
Measured Pe			0.0000	0.0000	

After Survey Verification		Performed Wed Dec 31 18:00:00 1969			
Window 1	0.0	0.0	0.0	0.0	cps
Window 2	0.0	0.0	0.0	0.0	cps
Window 3	0.0	0.0	0.0	0.0	cps
Window 4	0.0	0.0	0.0	0.0	cps
Long Space	0.0	0.0	0.0	0.0	cps
Short Space	0.0	0.0	0.0	0.0	cps
Measured Rho		0.0000	0.0000	0.0000	g/cc
Measured Correction		0.0000	0.0000	0.0000	g/cc
Measured Pe			0.0000	0.0000	

Compensated Neutron Calibration Report

Serial Number: 6I  
Tool Model: G

CALIBRATION						
	Detector	Readings		Target		Normalization
	Short Space	1.00	cps	1.00	cps	1.0000
	Long Space	1.00	cps	1.00	cps	1.0000

PRE-SURVEY VERIFICATION						
	Detector	Readings		Measured		Target
1)	Short Space		cps		pu	pu
	Long Space		cps			
2)	Short Space		cps		pu	
	Long Space		cps			
3)	Short Space		cps		pu	
	Long Space		cps			

POST-SURVEY VERIFICATION						
	Detector	Readings		Measured		Target
1)	Short Space		cps		pu	pu
	Long Space		cps			
2)	Short Space		cps		pu	pu
	Long Space		cps			
3)	Short Space		cps		pu	pu
	Long Space		cps			

Gamma Ray Calibration Report

Serial Number: GR6  
Tool Model: OPEN  
Performed: Tue Nov 08 13:43:57 2022

Calibrator Value:	150.0	GAPI
Background Reading:	0.0	cps
Calibrator Reading:	276.0	cps
Sensitivity:	0.8500	GAPI/cps