



# DUAL INDUCTION LOG

Company McCOY PETROLEUM CORPORATION  
 Well YOHN "A" #4-26  
 Field UNNAMED  
 County KIOWA  
 State KANSAS

Company McCOY PETROLEUM CORPORATION  
 Well YOHN "A" #4-26  
 Field UNNAMED  
 County KIOWA State KANSAS

Location: API #: 15-097-21869-0000  
 2310' FNL & 1650' FWL  
 SW - SE - NW  
 SEC 26 TWP 30S RGE 19W  
 Permanent Datum GROUND LEVEL Elevation 2239  
 Log Measured From KELLY BUSHING 11' A.G.L.  
 Drilling Measured From KELLY BUSHING  
 Elevation  
 K.B. 2250  
 D.F. 2248  
 G.L. 2239

Date	12/30/22
Run Number	ONE
Depth Driller	5280
Depth Logger	5278
Bottom Logged Interval	5276
Top Log Interval	00
Casing Driller	8 5/8"@634'
Casing Logger	636
Bit Size	7 7/8"
Type Fluid in Hole	CHEMICAL MUD
Density / Viscosity	9.4/53
pH / Fluid Loss	11.0/7.2
Source of Sample	FLOWLINE
Rm @ Meas. Temp	.950@74F
Rmf @ Meas. Temp	.713@74F
Rmc @ Meas. Temp	1.14@74F
Source of Rmf / Rmc	MEASURED
Rm @ BHT	.549@128F
Time Circulation Stopped	3 HOURS
Time Logger on Bottom	4.45 P.M.
Maximum Recorded Temperature	128F
Equipment Number	8916
Location	HAYS, KANSAS
Recorded By	JEFF LUEBBERS
Witnessed By	BLAKE MILLER

<<< Fold Here >>>

All interpretations are opinions based on inferences from electrical or other measurements and we cannot and do not guarantee the accuracy or correctness of any interpretation, and we shall not, except in the case of gross or willful negligence on our part, be liable or responsible for any loss, costs, damages, or expenses incurred or sustained by anyone resulting from any interpretation made by any of our officers, agents or employees. These interpretations are also subject to our general terms and conditions set out in our current Price Schedule.

### Comments

THANK YOU FOR USING ELI WIRELINE, HAYS, KS. (785) 628-6395  
 DIRECTIONS:  
 COLDWATER, KS., N. ON HWY 183 TO (COMANCHE/KIOWA COUNTY LINE) 3W. ON "A RD.", TO  
 "21ST. AVE" 1 1/2 N., E. INTO

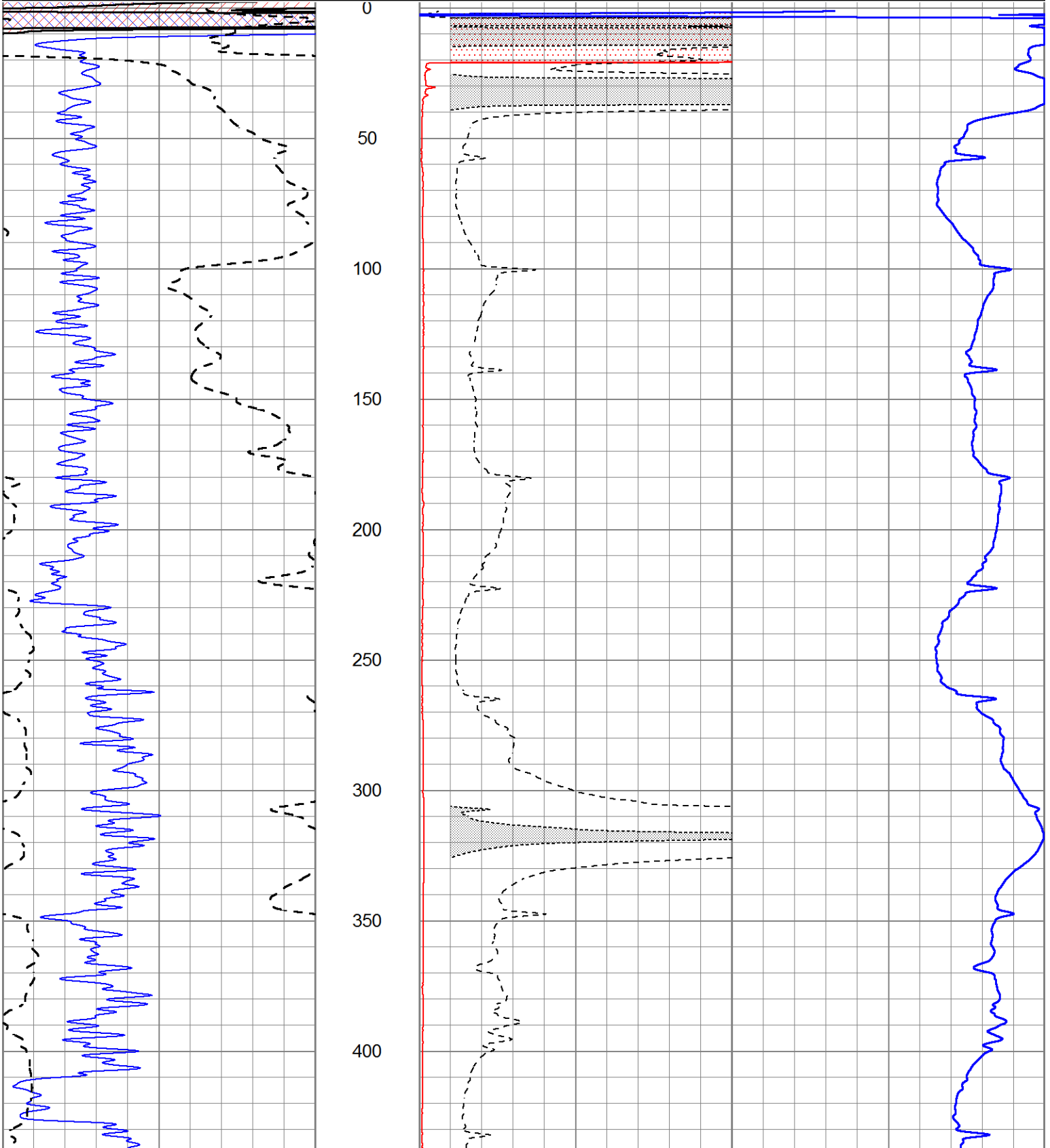


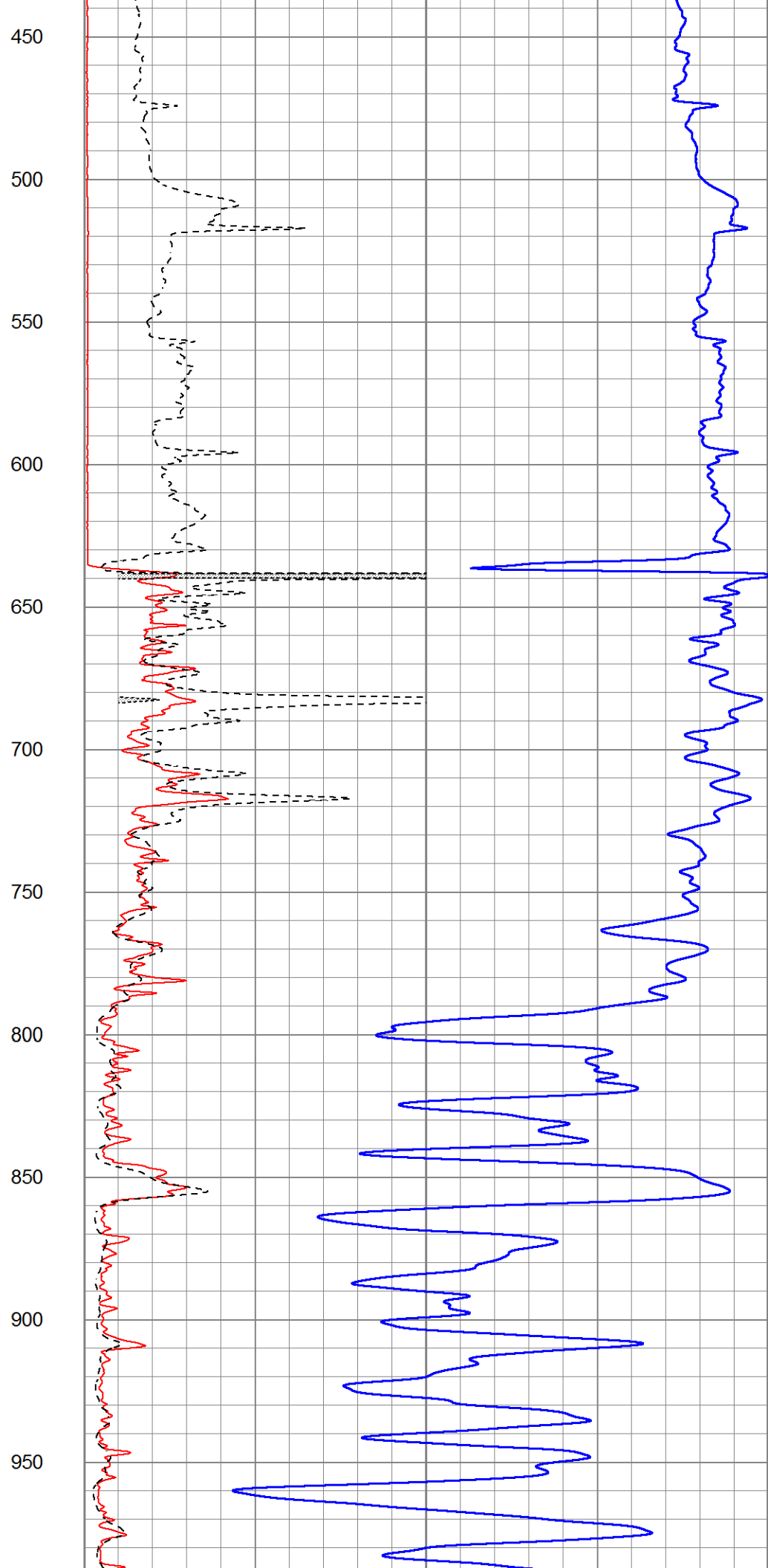
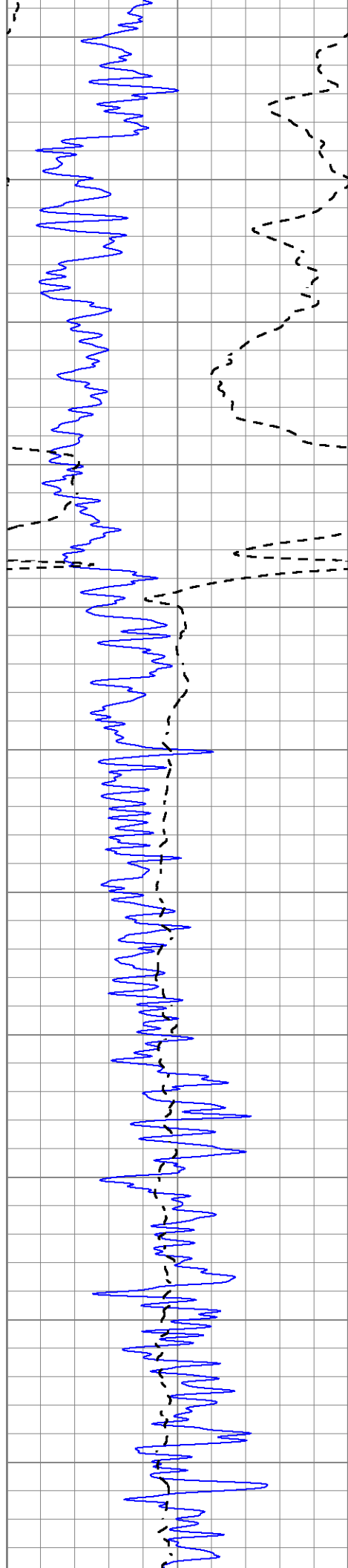
# MAIN SECTION

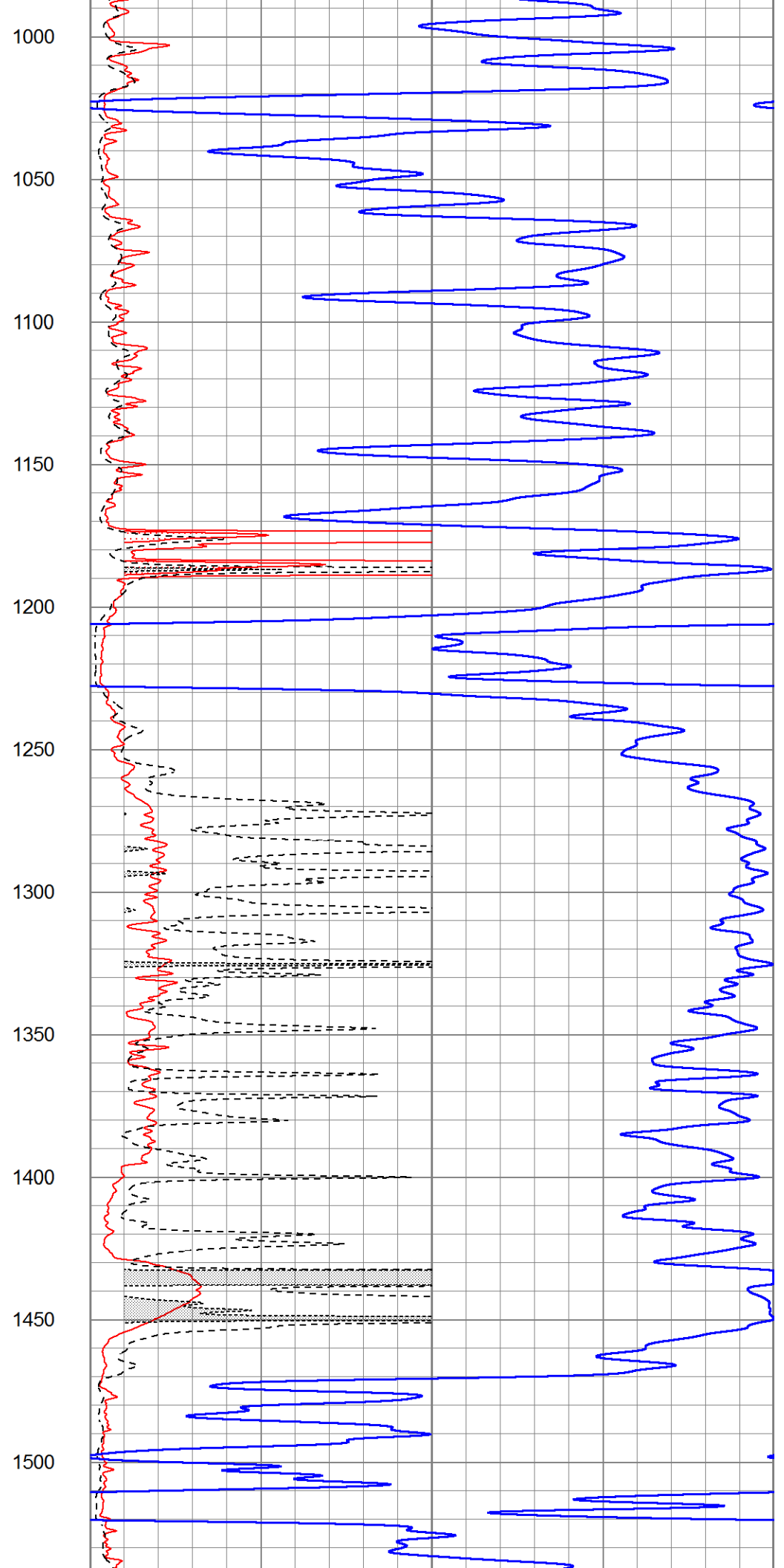
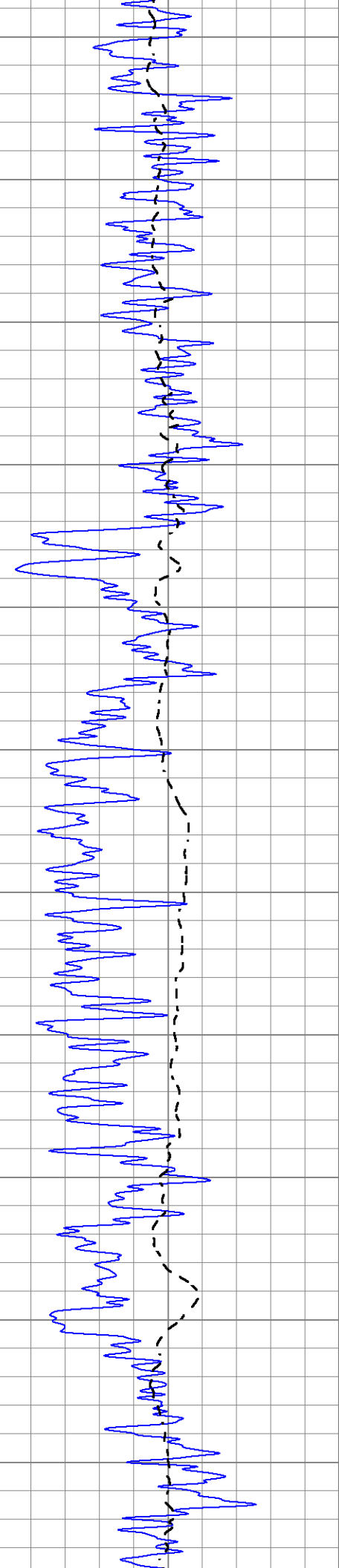
Database File 7426pe.db  
 Dataset Pathname pass3.1M  
 Presentation Format \_dil2  
 Dataset Creation Fri Dec 30 18:50:07 2022  
 Charted by Depth in Feet scaled 1:600

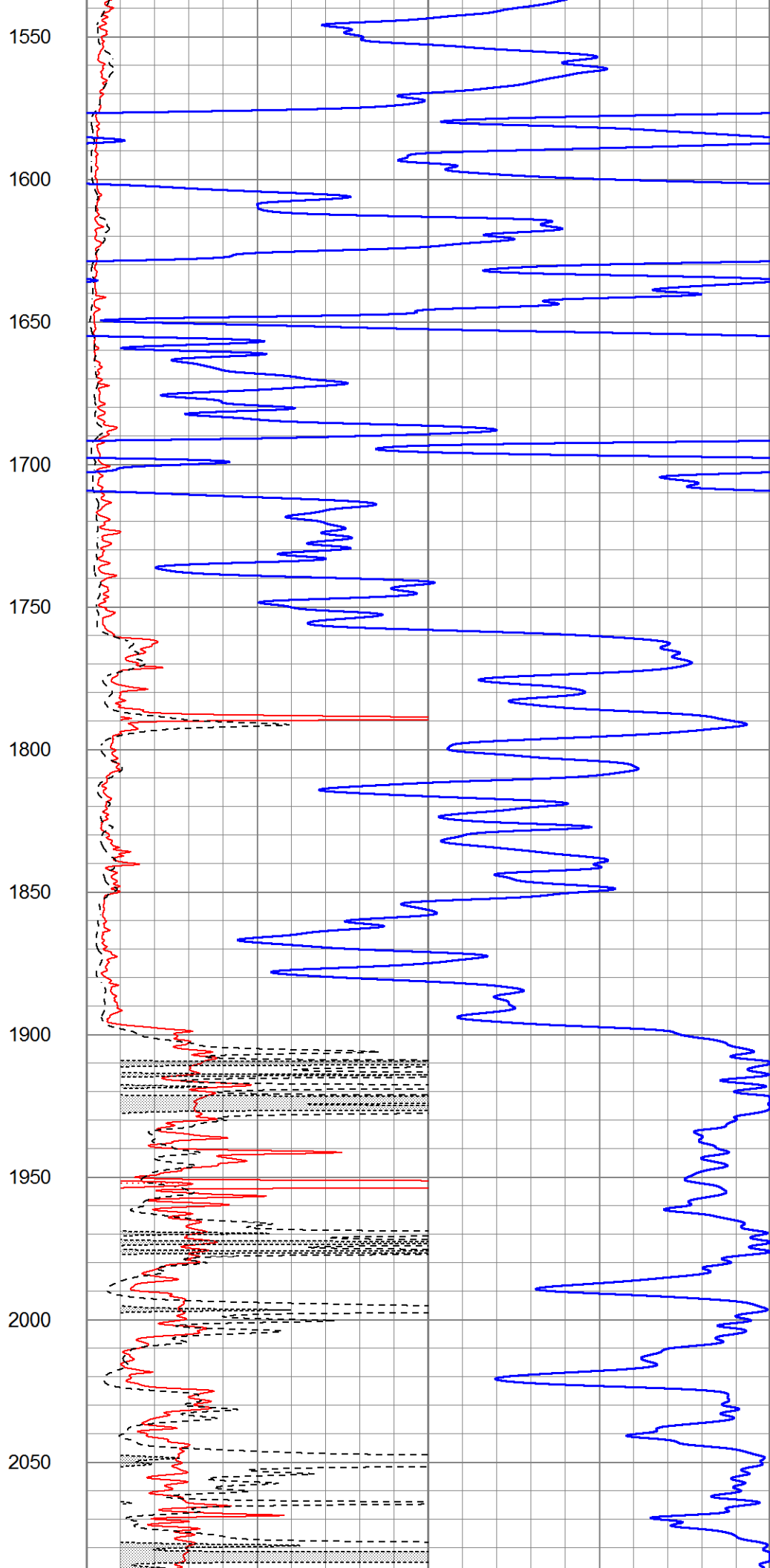
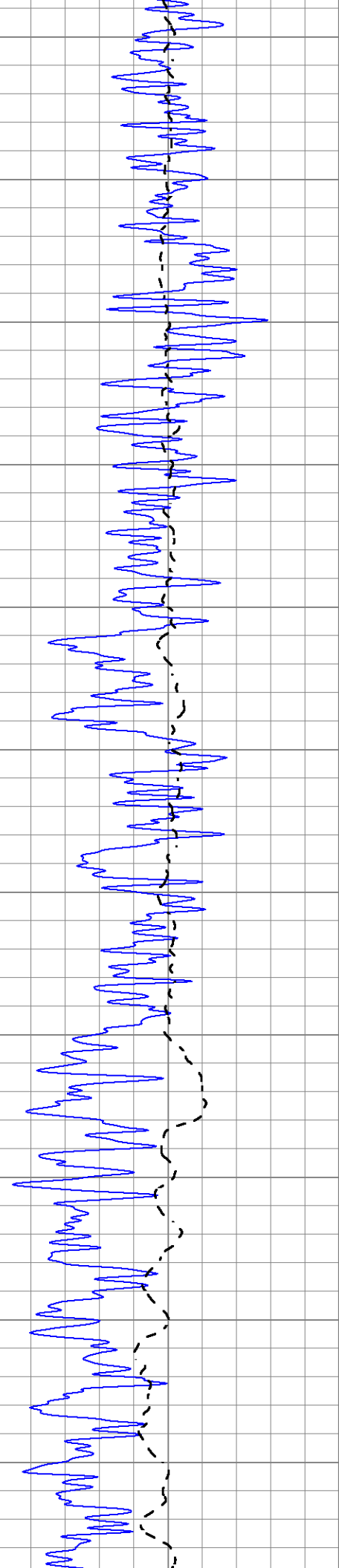
0	Gamma Ray (GAPI)	150
-100	SP (mV)	100

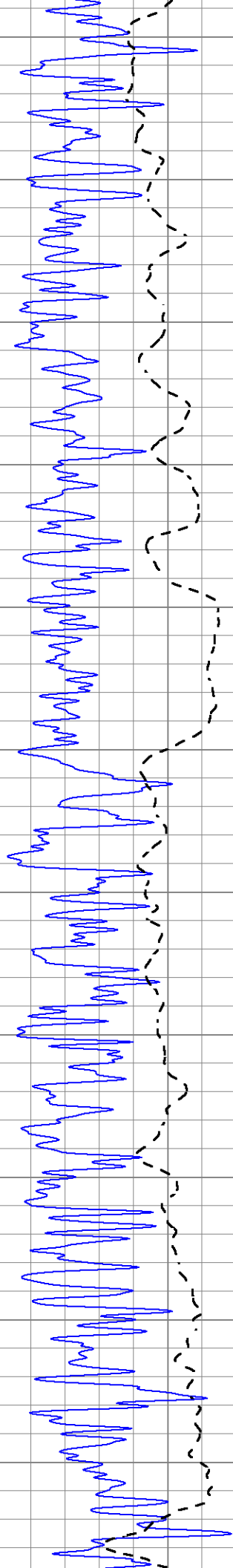
1000	CILD (mmho/m)	0
0	RLL3 (Ohm-m)	50
0	RILD (Ohm-m)	50
50	RILD X10 (Ohm-m)	500
50	RLL3 X10 (Ohm-m)	500











2100

2150

2200

2250

2300

2350

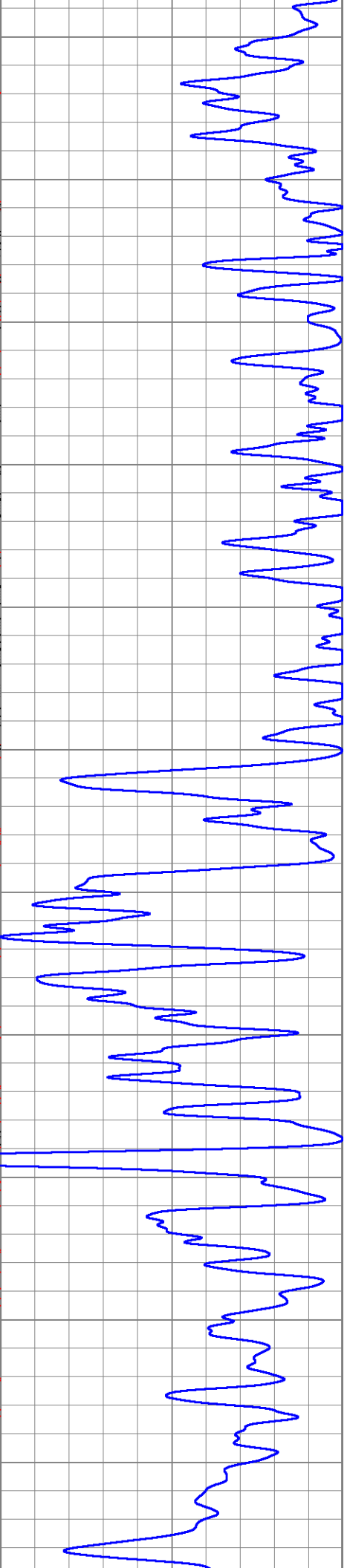
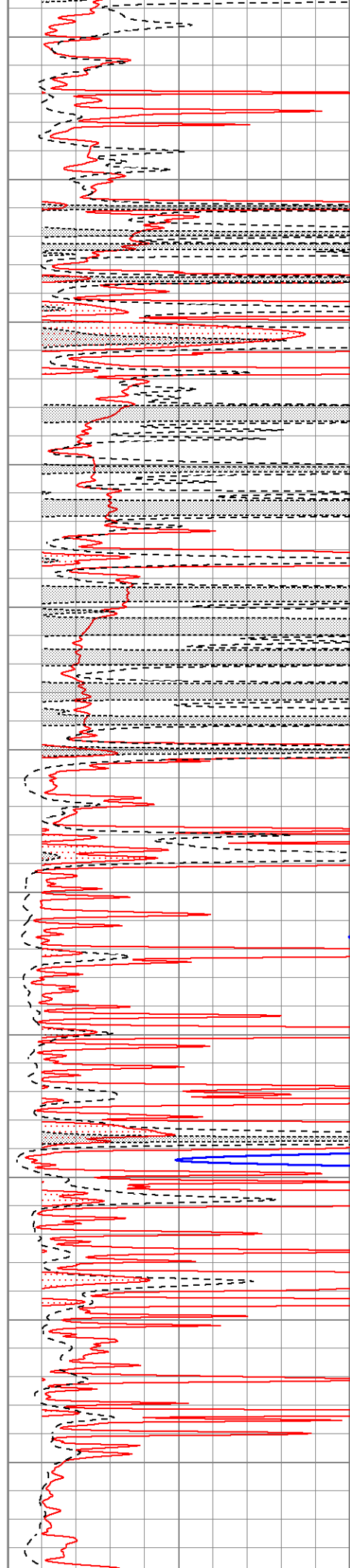
2400

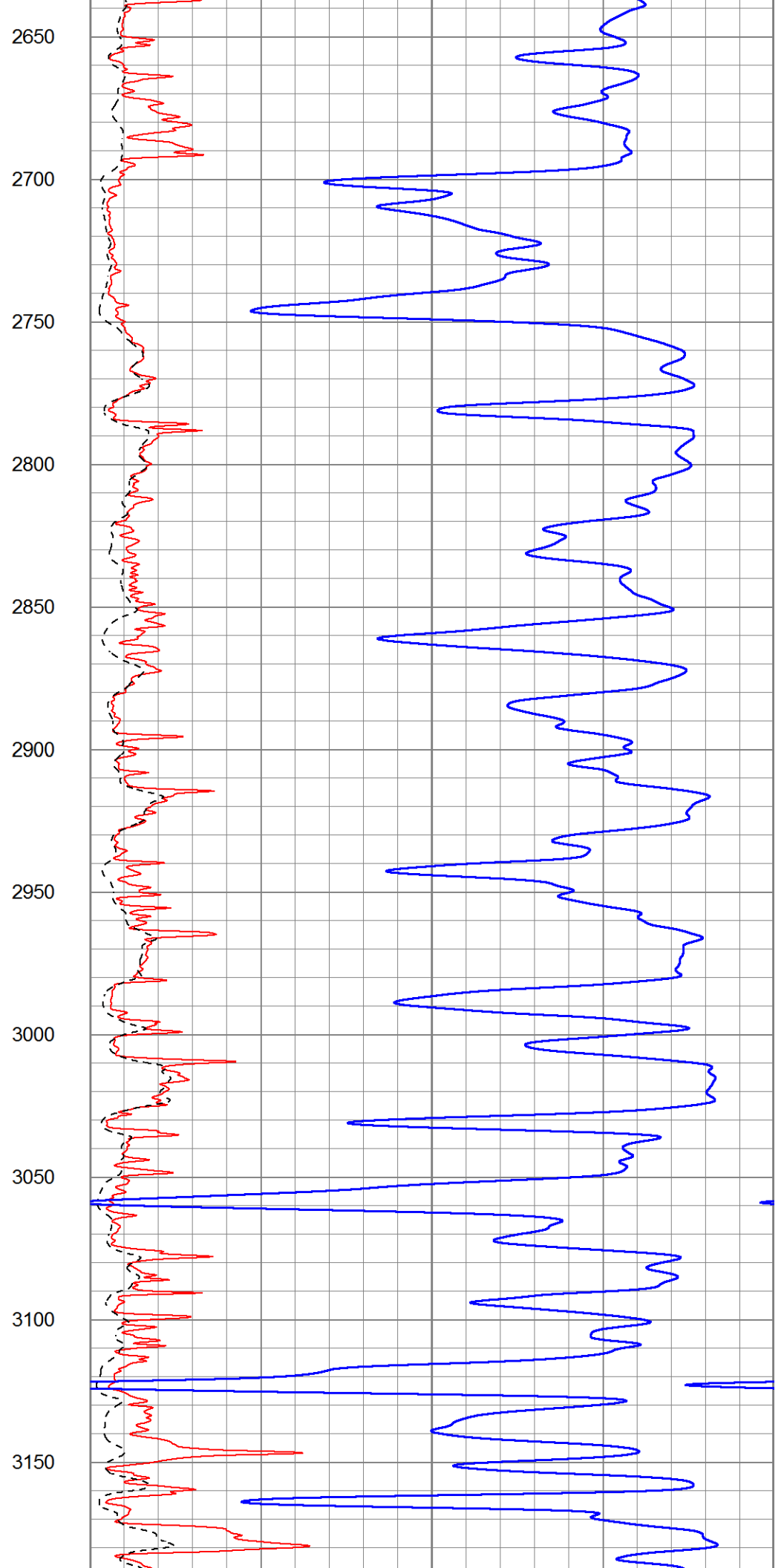
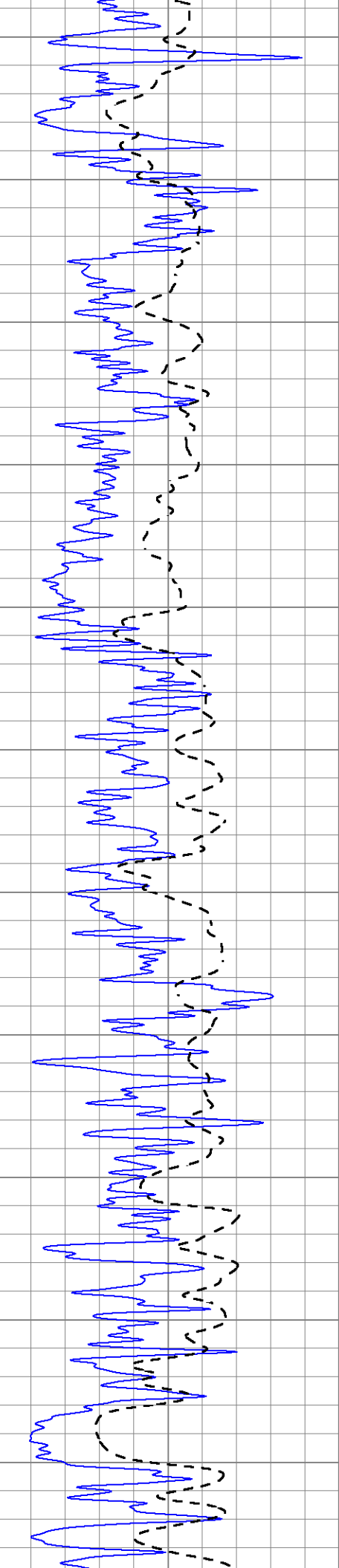
2450

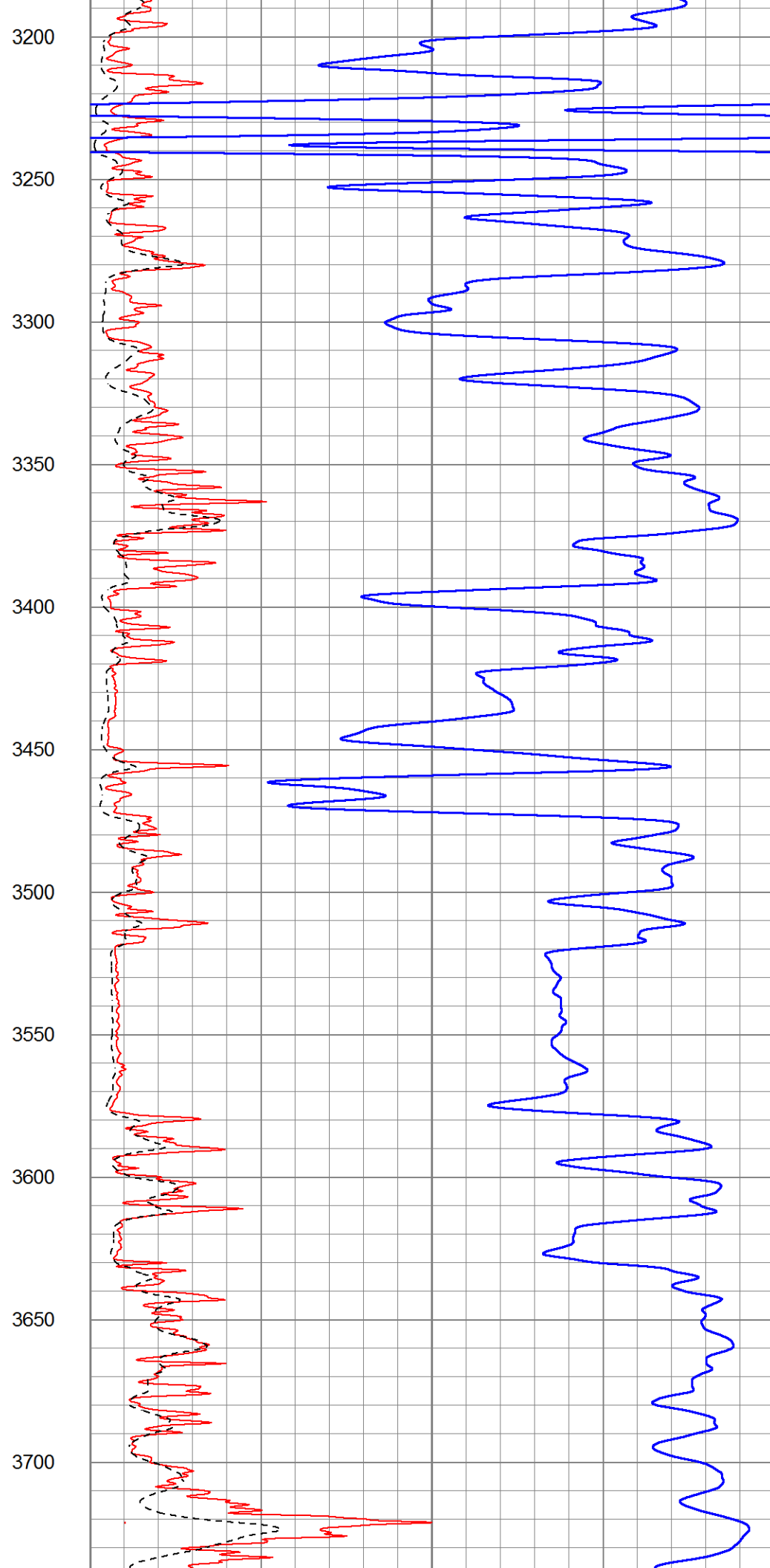
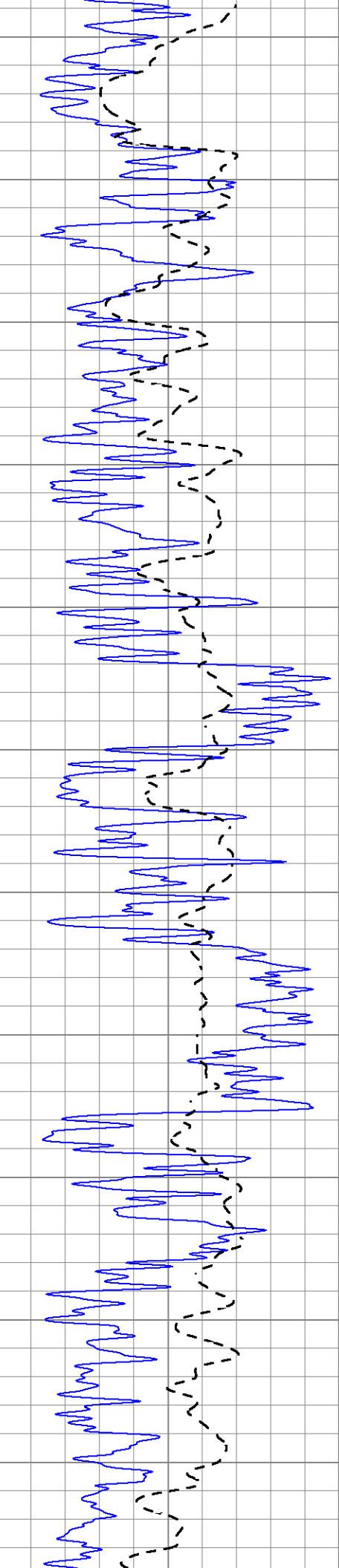
2500

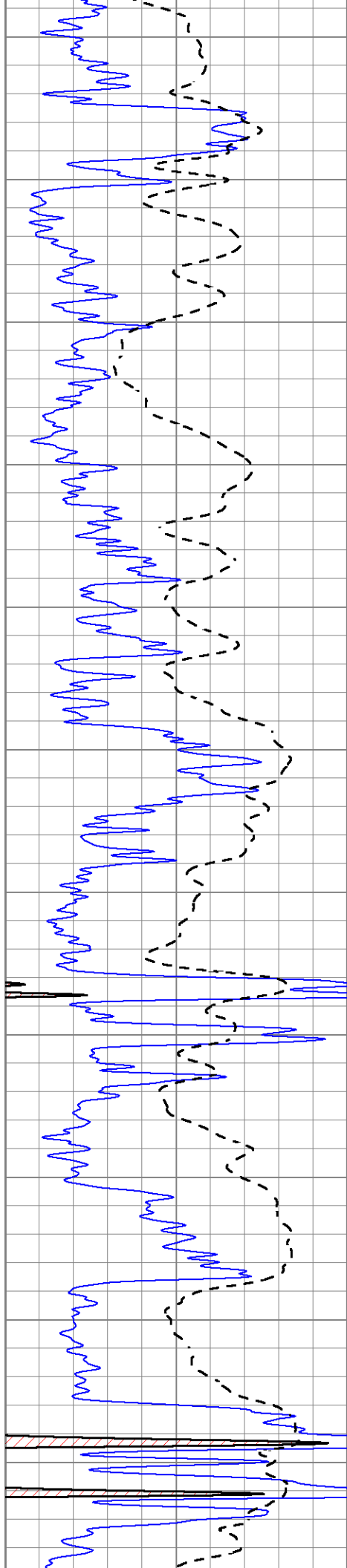
2550

2600









3750

3800

3850

3900

3950

4000

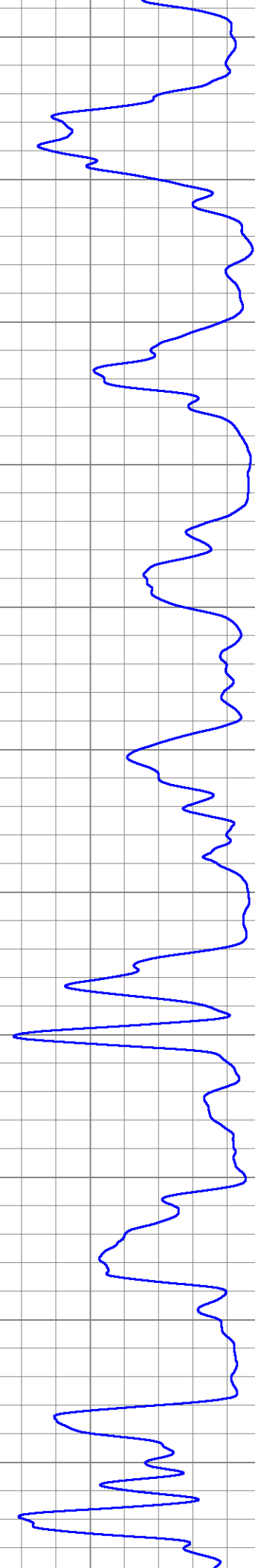
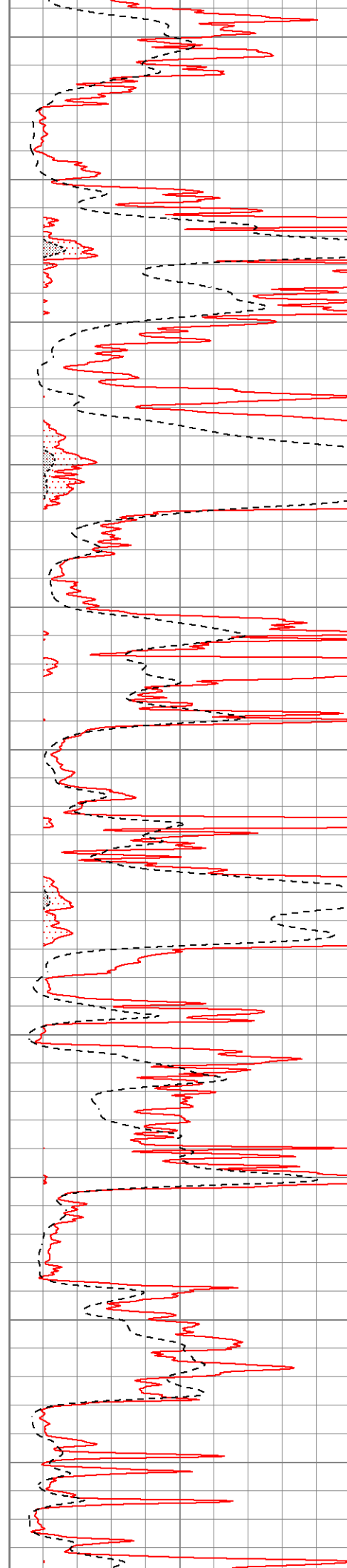
4050

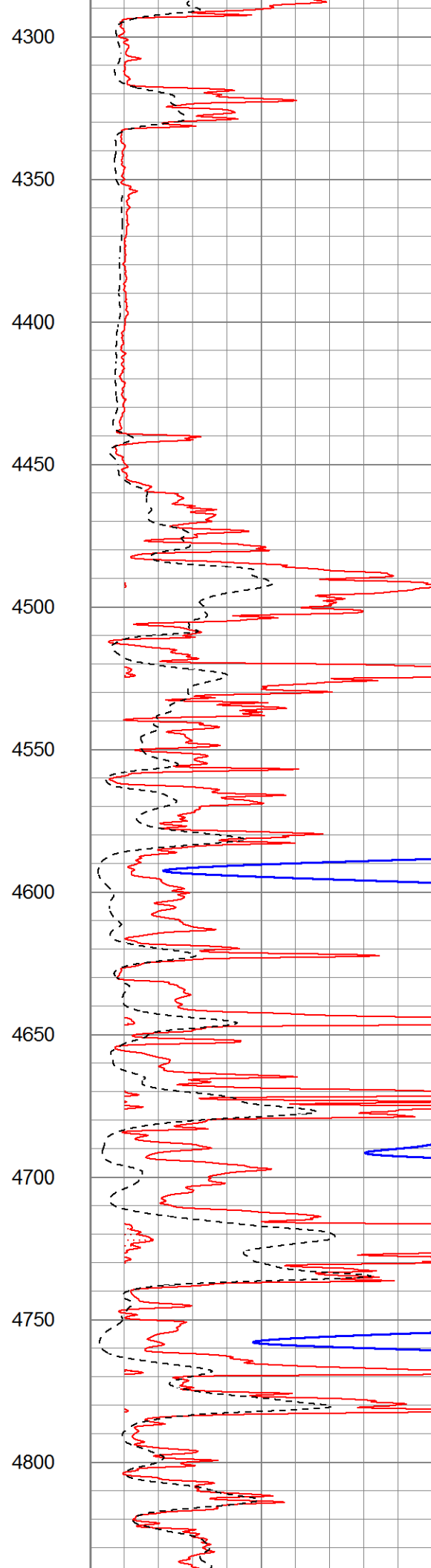
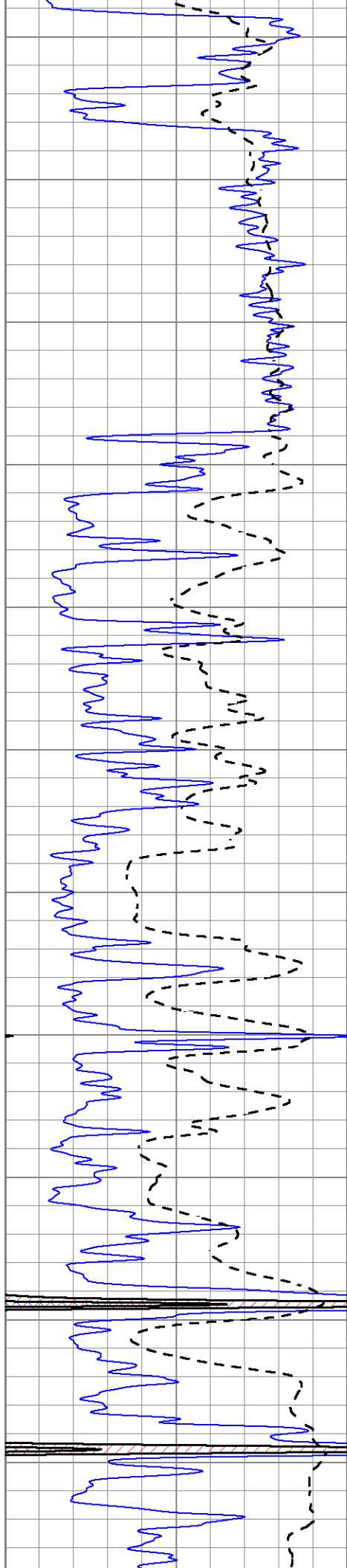
4100

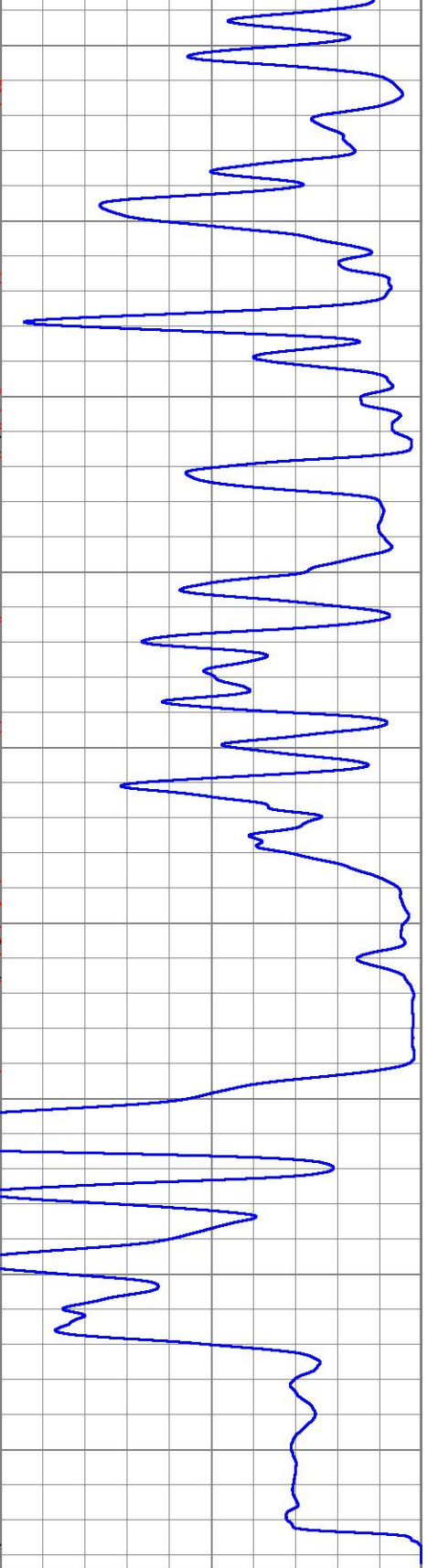
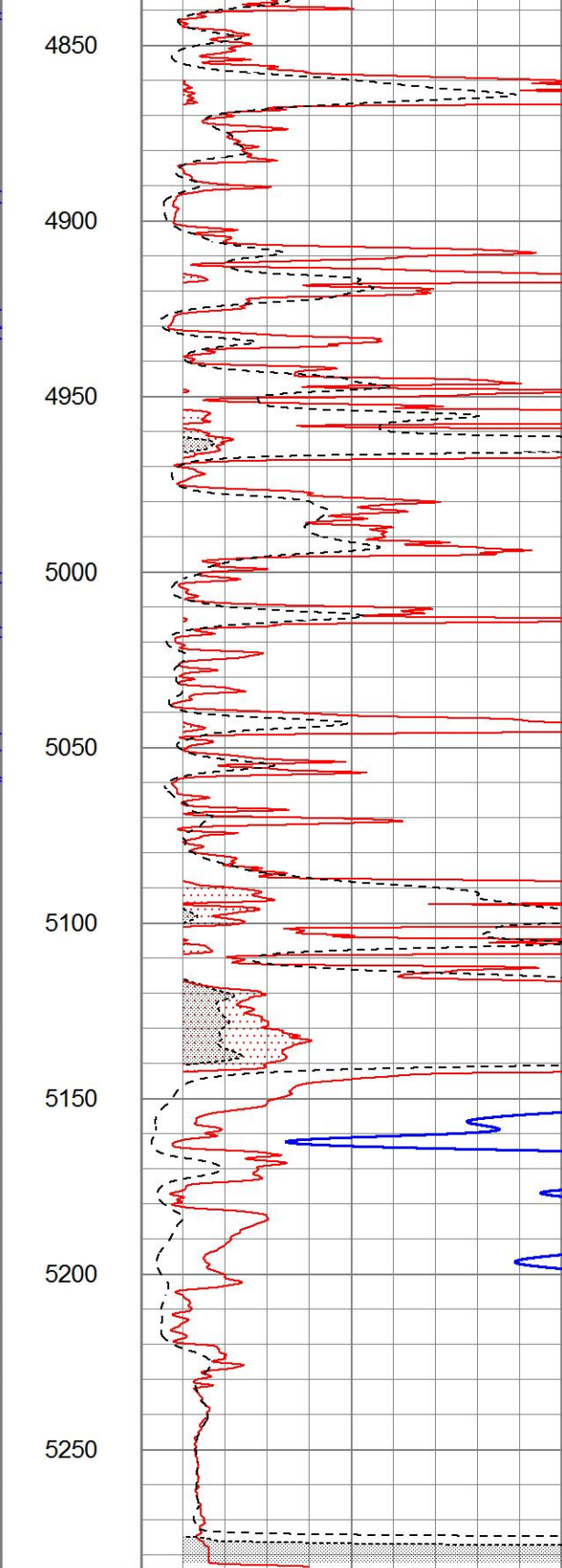
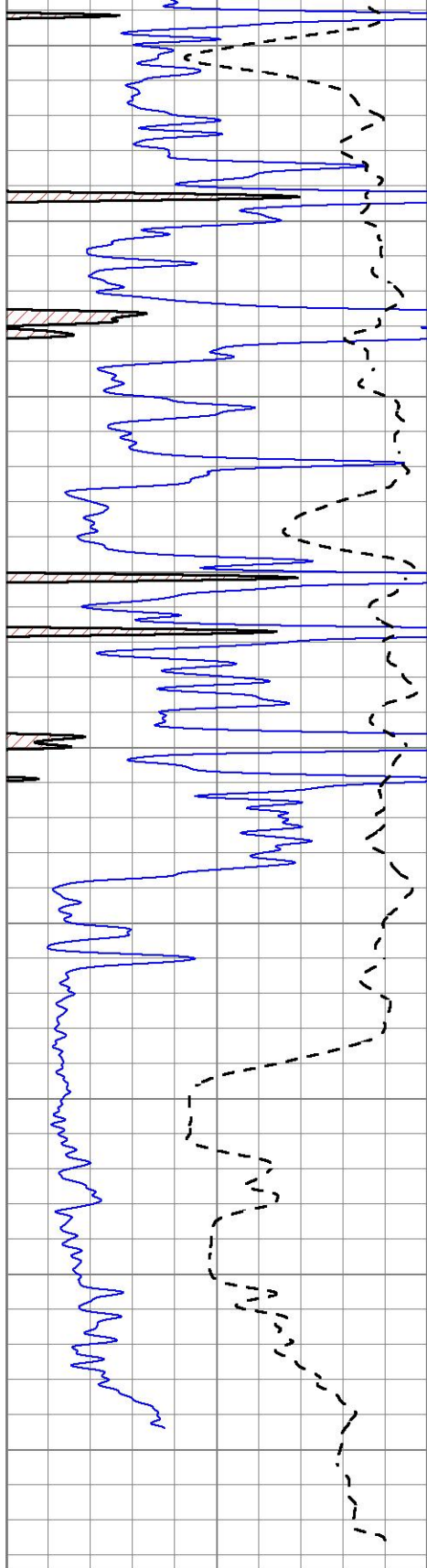
4150

4200

4250







0	Gamma Ray (GAPI)	150
-100	SP (mV)	100

1000	CILD (mmho/m)	0
0	RLL3 (Ohm-m)	50
0	RILD (Ohm-m)	50
50	RILD X10 (Ohm-m)	500
50	RLL3 X10 (Ohm-m)	500



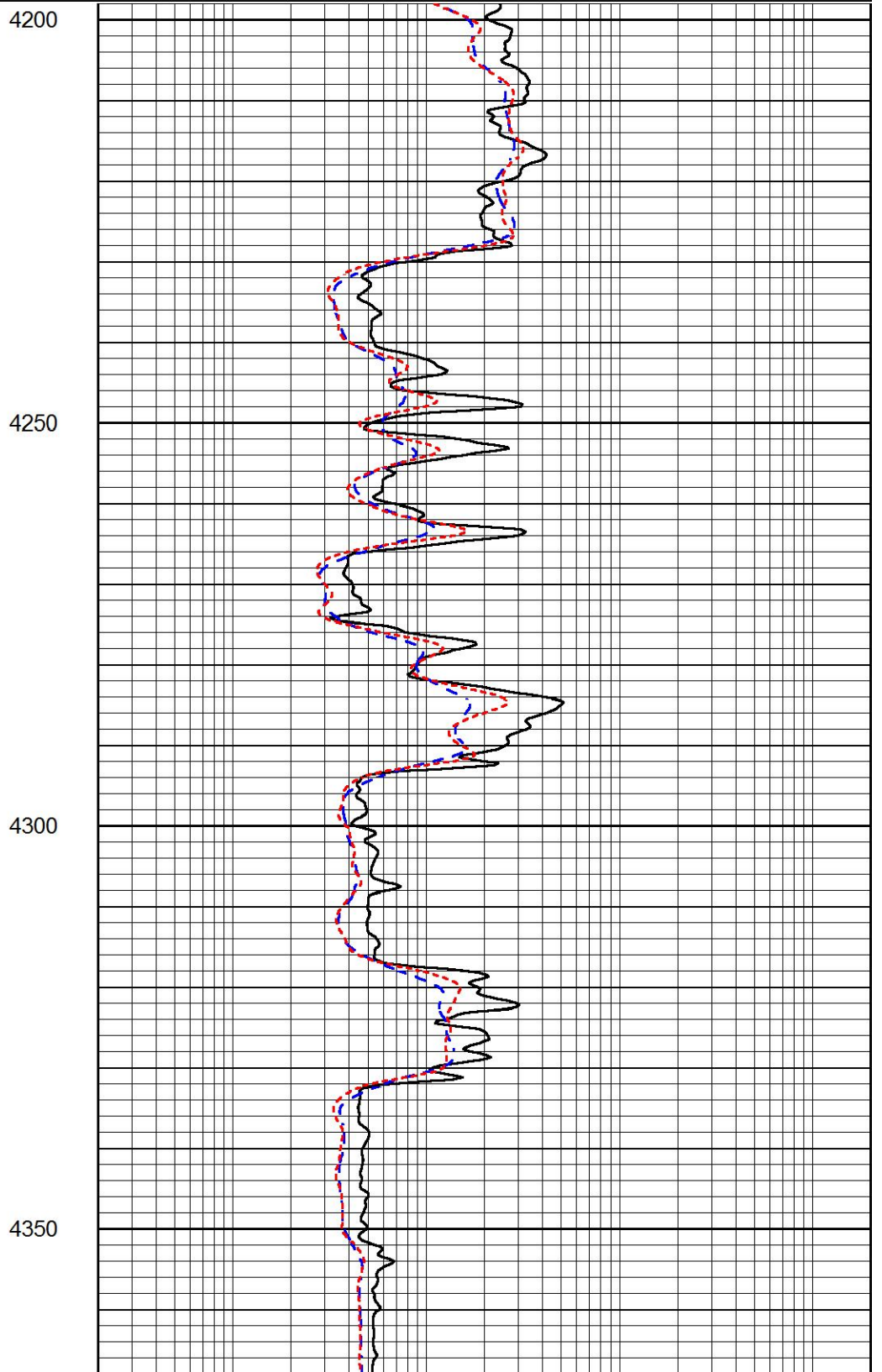
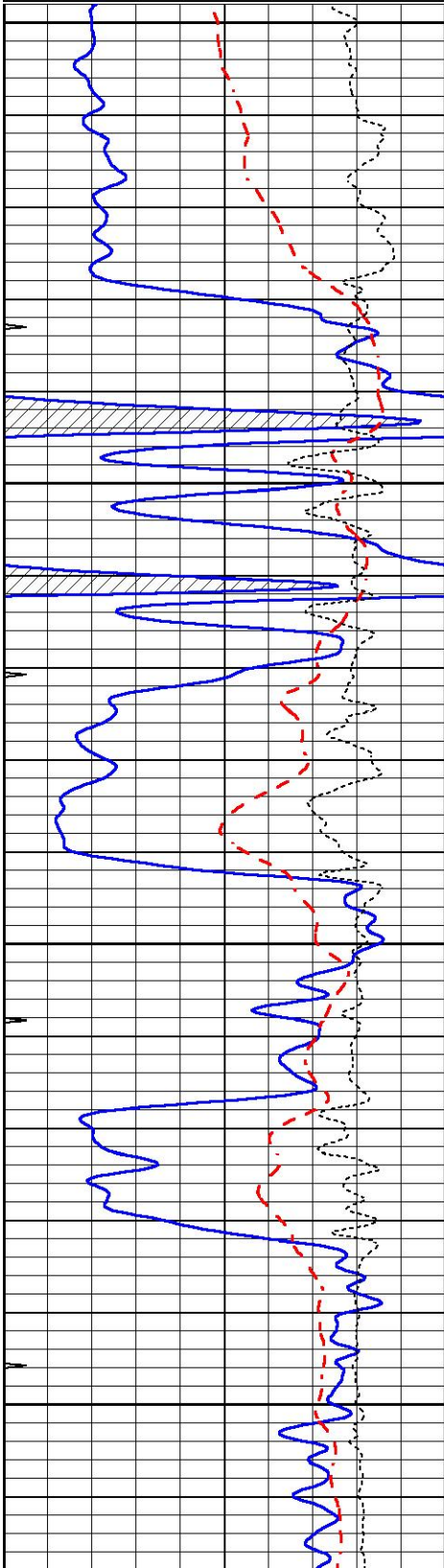
# MAIN SECTION

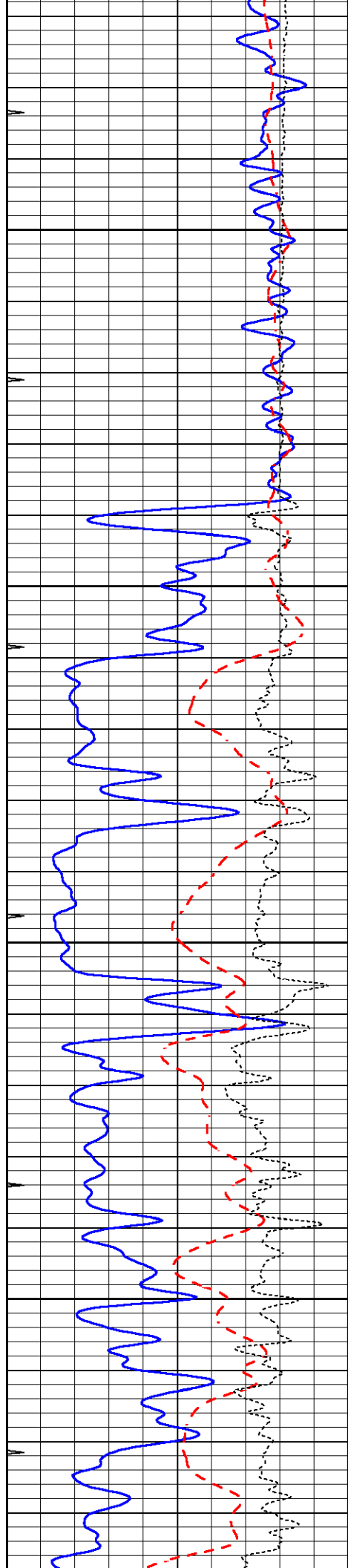
# MAIN SECTION

Database File 7426pe.db  
 Dataset Pathname pass3.1M  
 Presentation Format \_dil  
 Dataset Creation Fri Dec 30 18:50:07 2022  
 Charted by Depth in Feet scaled 1:240

0	GAMMA RAY (GAPI)	150
-100	SP (mV)	100
-250	Rxo/Rt	50
0	MINMK	20

0.2	SHALLOW GUARD (Ohm-m)	2000
0.2	DEEP INDUCTION (Ohm-m)	2000
0.2	MEDIUM INDUCTION (Ohm-m)	2000



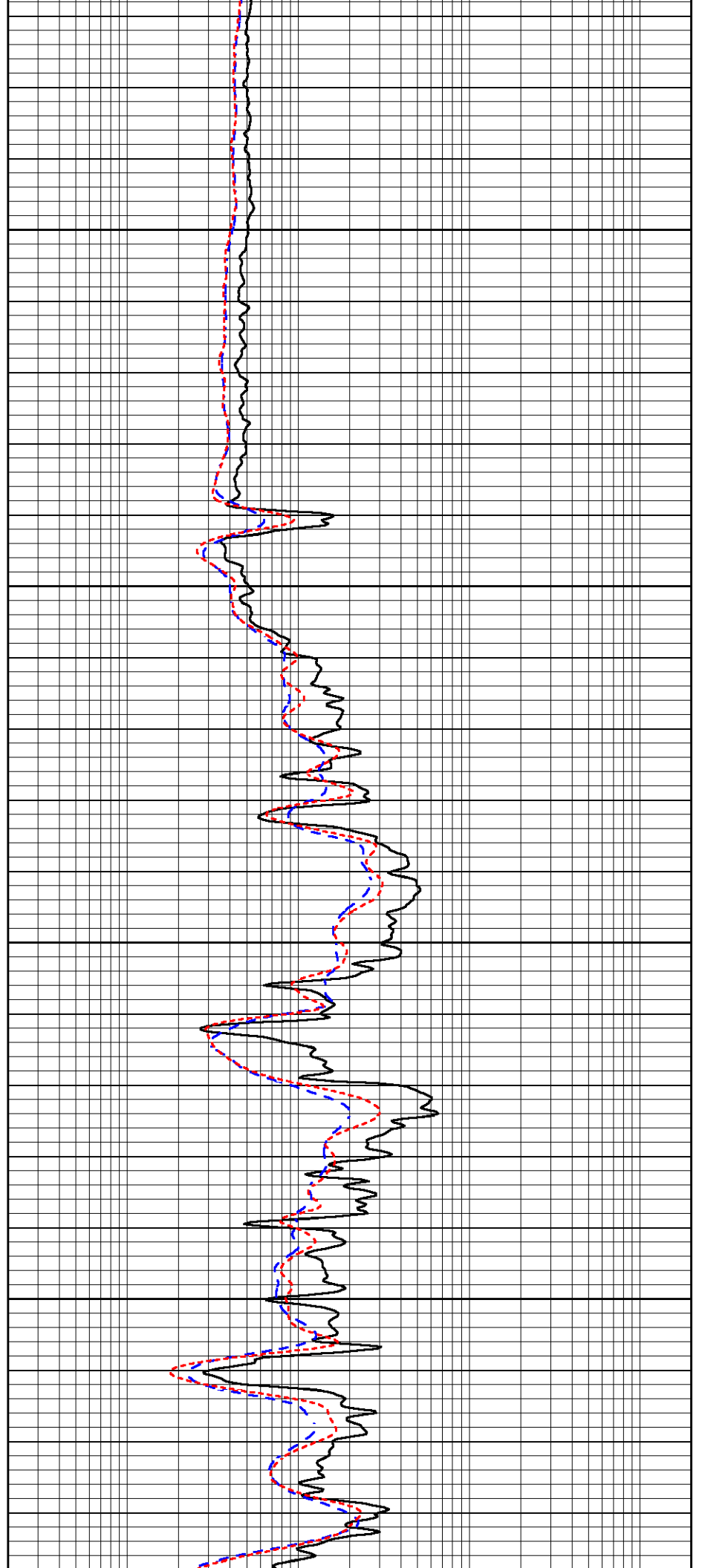


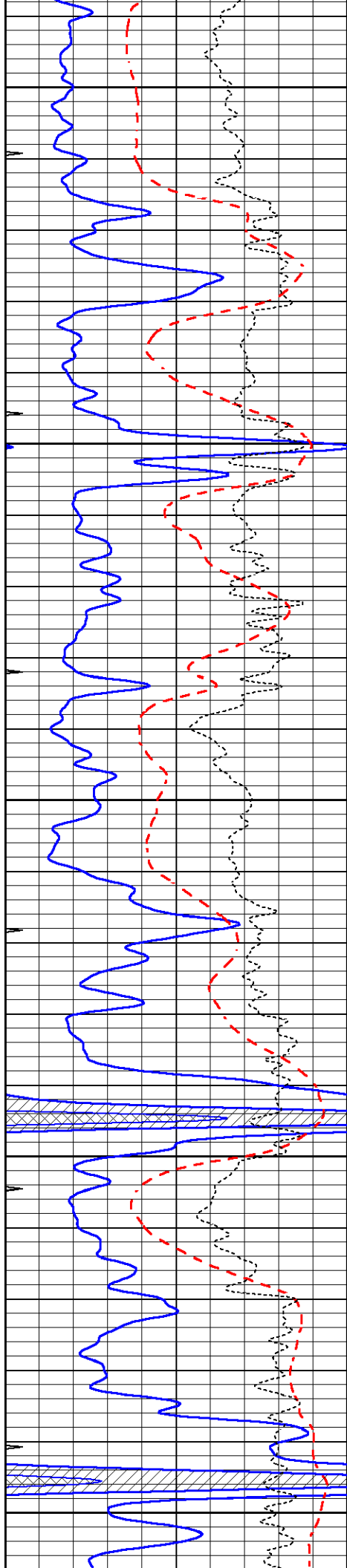
4400

4450

4500

4550





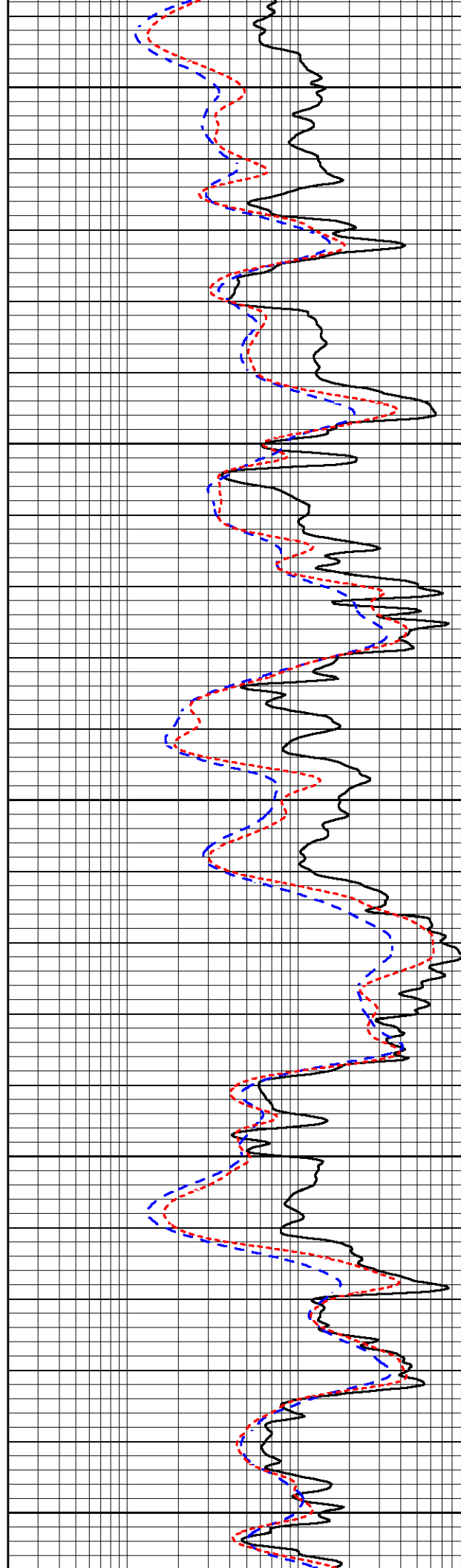
4600

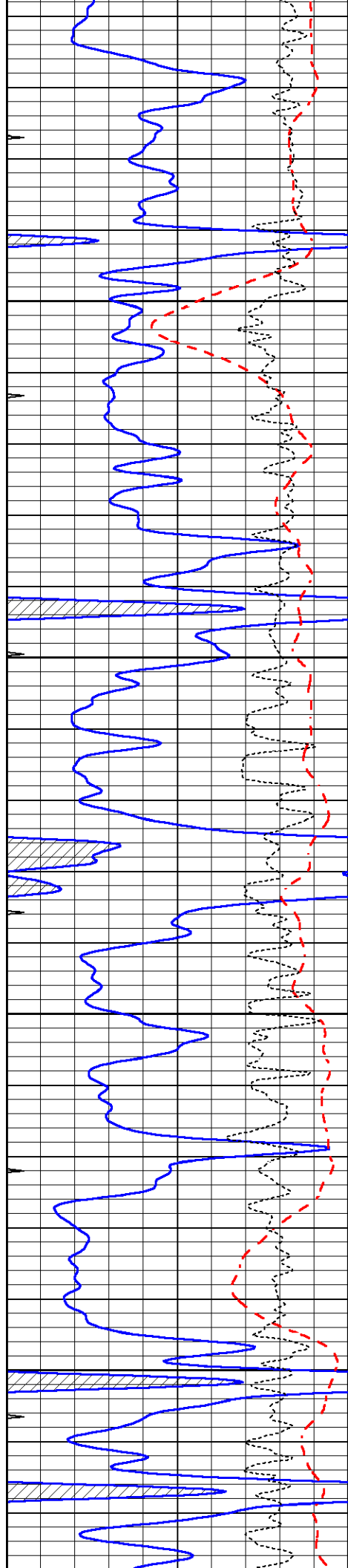
4650

4700

4750

4800



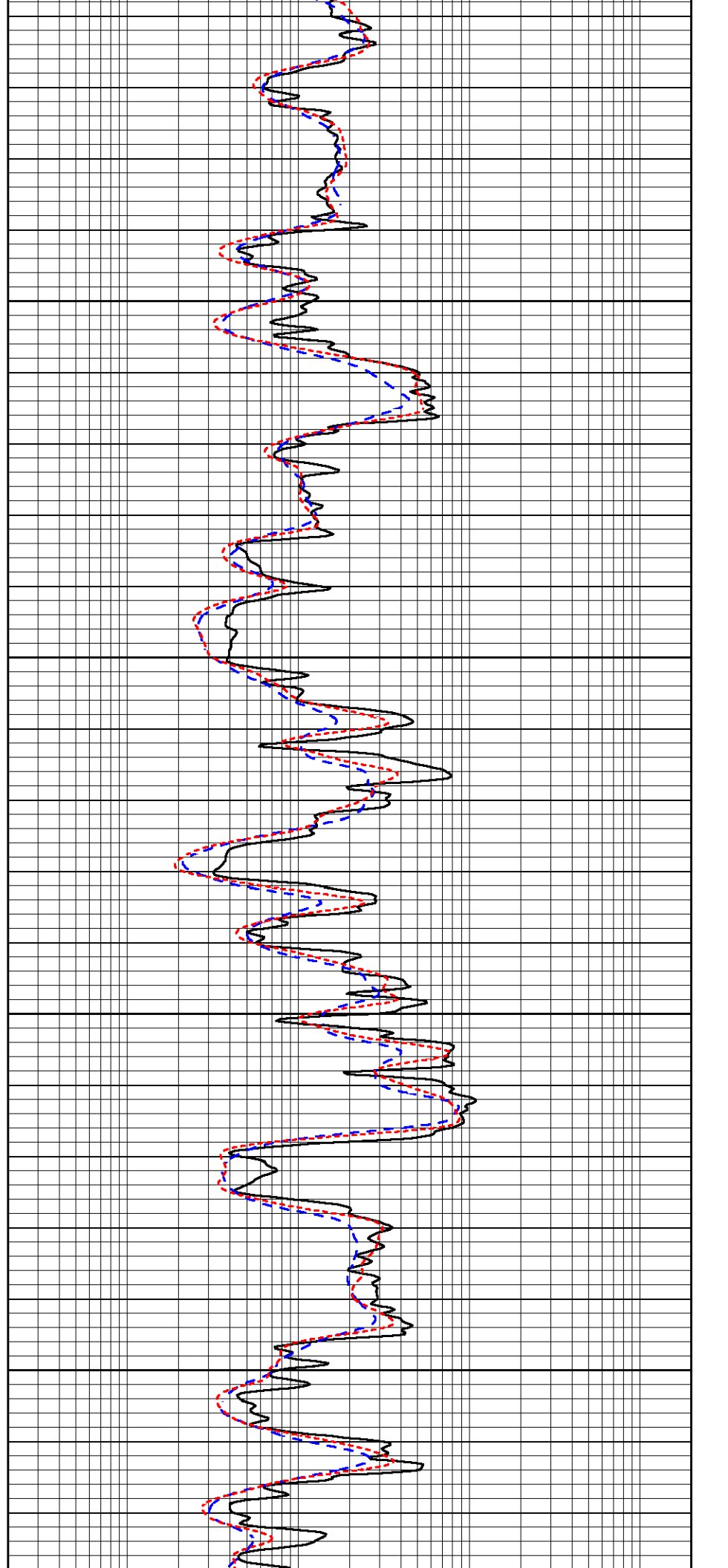


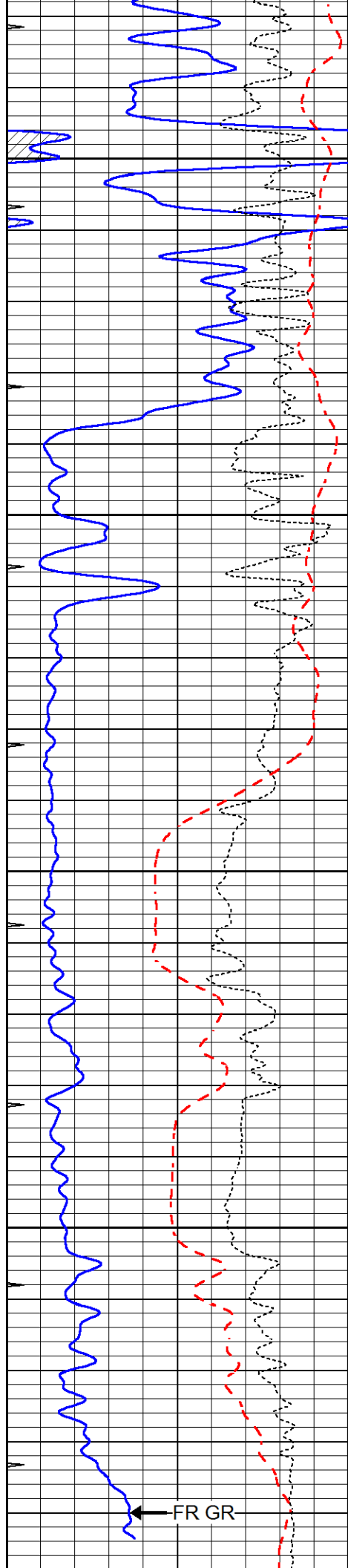
4850

4900

4950

5000



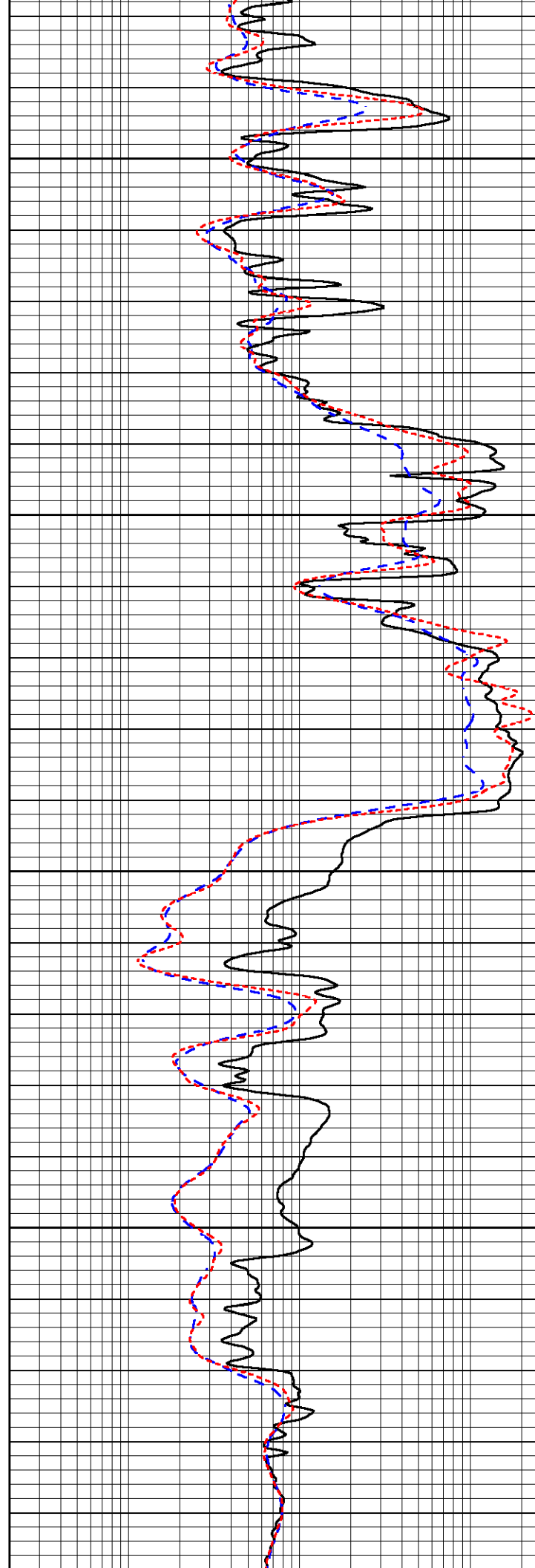


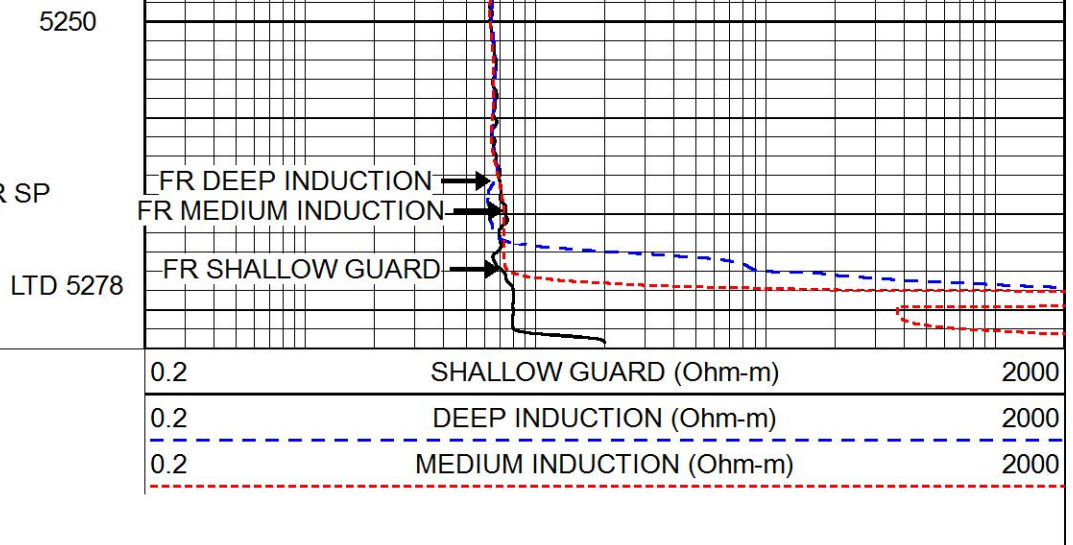
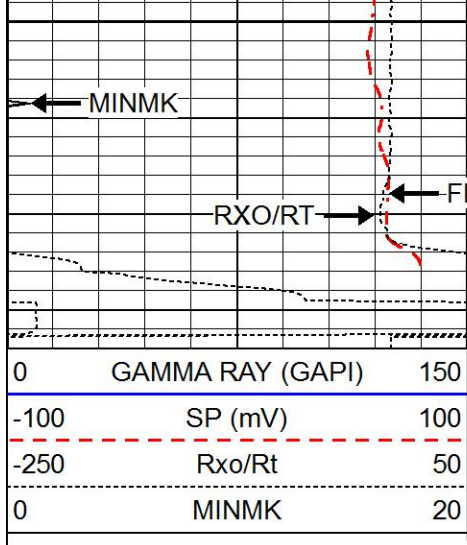
5050

5100

5150

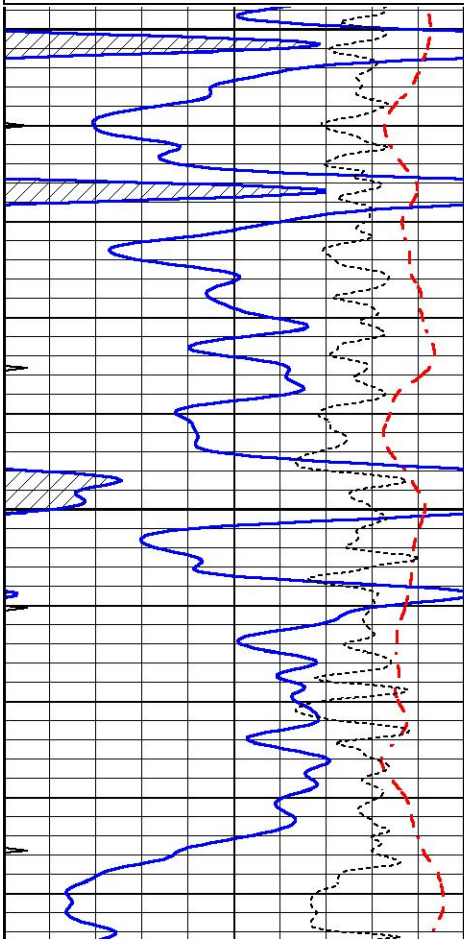
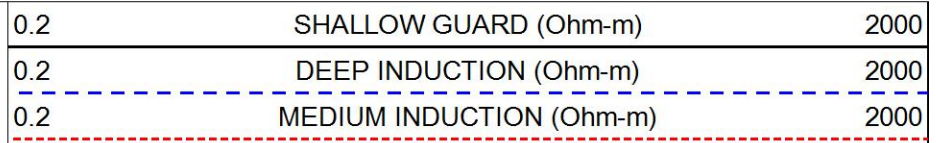
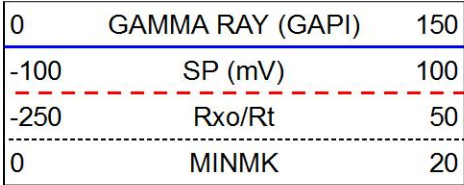
5200





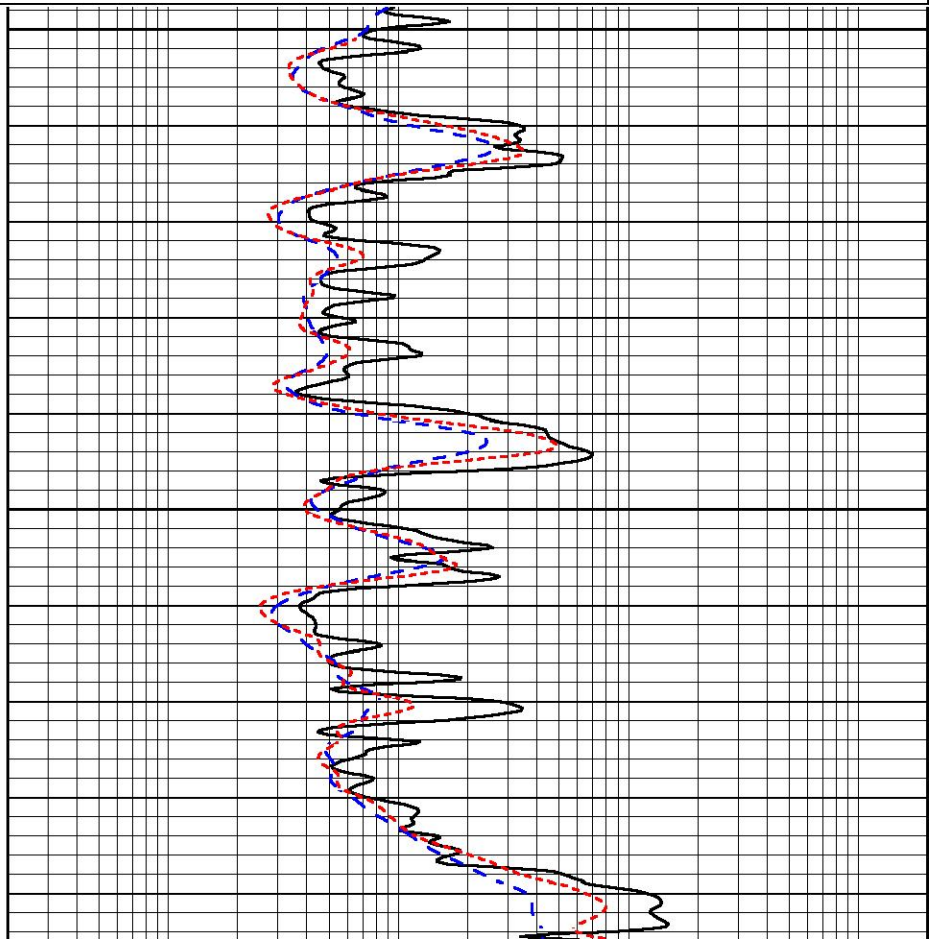
# REPEAT SECTION

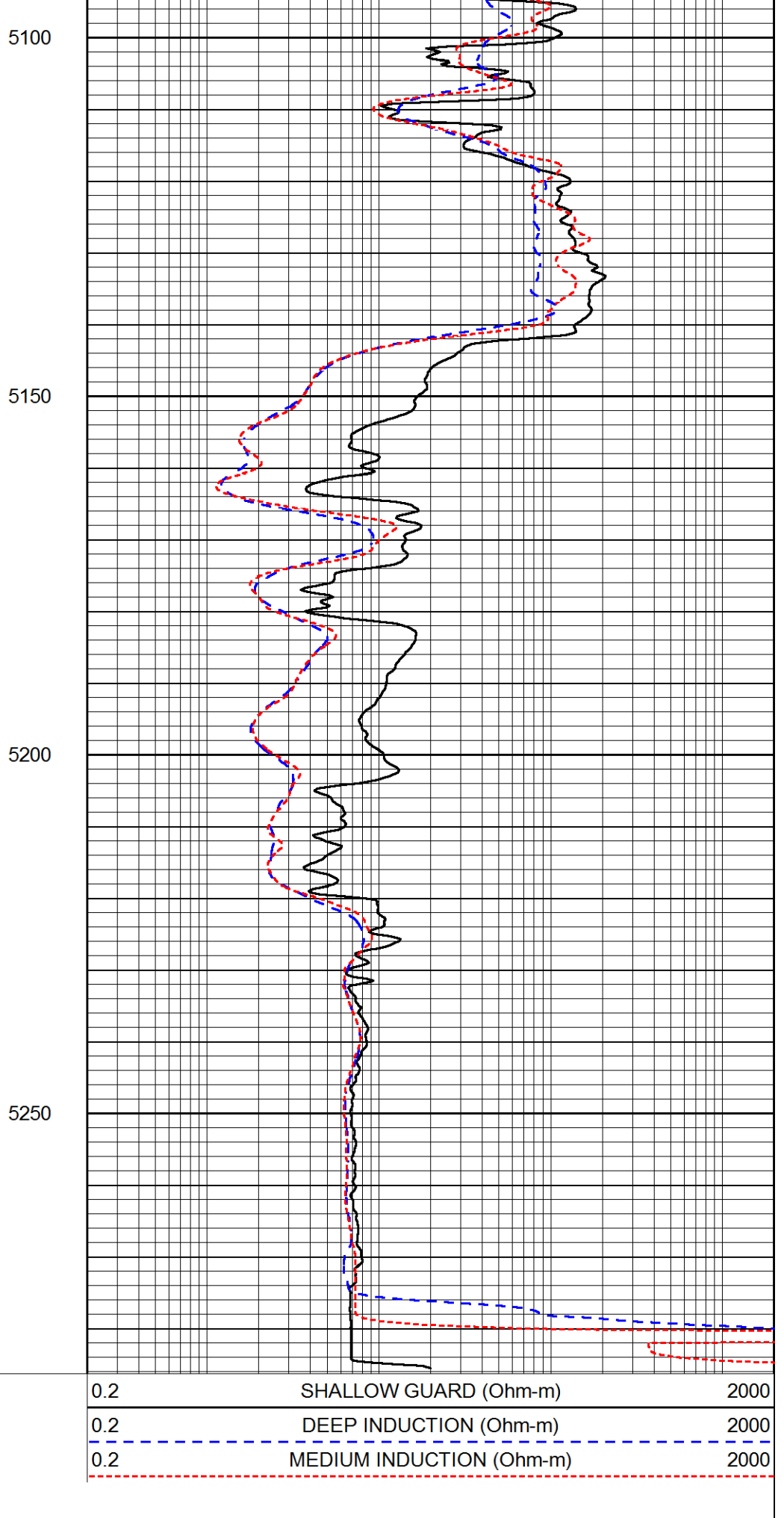
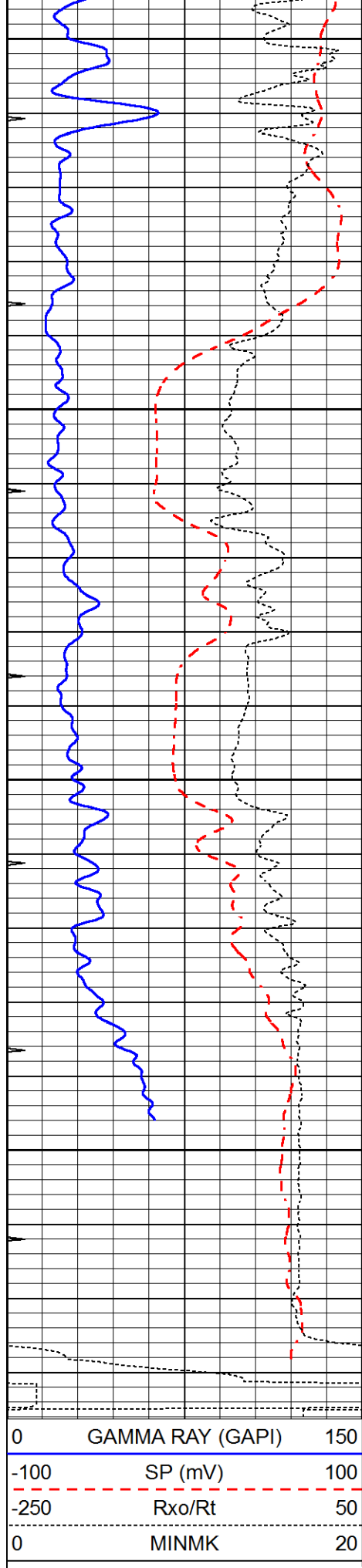
Database File 7426pe.db  
 Dataset Pathname pass2.1R  
 Presentation Format \_dil  
 Dataset Creation Fri Dec 30 18:52:46 2022  
 Charted by Depth in Feet scaled 1:240



5000

5050





Calibration Report

Database File 7426pe.db  
 Dataset Pathname pass3.1M  
 Dataset Creation Fri Dec 30 18:50:07 2022

Dual Induction Calibration Report

Serial-Model: PROBE8-DILG  
 Surface Cal Performed: Fri Dec 30 17:20:13 2022  
 Downhole Cal Performed: Mon Sep 10 14:28:38 2018  
 After Survey Verification Performed: Mon Sep 10 14:28:40 2018

Surface Calibration

Loop:	Readings			References			Results	
	Air	Loop		Air	Loop		m	b
Deep	0.015	0.648	V	0.000	400.000	mmho/m	620.000	4.000
Medium	0.029	0.796	V	0.000	464.000	mmho/m	620.000	-10.000
Internal:	Zero	Cal		Zero	Cal		m	b
Deep	0.017	0.657	V	0.000	400.000	mmho/m	625.153	-10.619
Medium	0.016	0.757	V	0.000	464.000	mmho/m	625.992	-9.739

Downhole Calibration

	Readings			References			Results	
	Zero	Cal		Zero	Cal		m'	b'
Deep	0.000	0.000	mmho/m	2.011	405.777	mmho/m	1.000	0.000
Medium	0.000	0.000	mmho/m	7.590	503.393	mmho/m	1.000	0.000
LL3		7.500	V		1500.000	Ohm-m		
		0.000	V		20.000	Ohm-m		
		-7.200	V		3800.000	mmho-m		

After Survey Verification

	Readings			Targets			Results	
	Zero	Cal		Zero	Cal		m'	b'
Deep	0.000	0.000	mmho/m	0.000	0.000	mmho/m	0.000	0.000
Medium	0.000	0.000	mmho/m	0.000	0.000	mmho/m	0.000	0.000
LL3		1.000	Ohm-m		1.000	Ohm-m		
		0.000	Ohm-m		0.000	Ohm-m		
		1.000	mmho-m		1.000	mmho-m		

Litho Density Calibration Report

Serial: 004 Model: PRB

Master Calibration

Performed Fri Nov 04 15:19:59 2022

	Background	Magnesium	Aluminum	Aluminum+Fe	
Window 1	1153.2	7232.1	2536.8	2279.5	cps
Window 2	1055.6	6225.5	2222.3	2030.5	cps
Window 3	902.5	3849.3	1546.4	1462.0	cps
Window 4	254.4	258.2	253.1	253.9	cps
Long Space	0.0	5169.9	1166.7	974.9	cps
Short Space	4.7	1383.0	950.5	792.1	cps
Rho		1.7100	2.5900	0.0000	g/cc
Pe		2.0000	2.7500	5.7900	
Rib Angle	: 45.9	Rib Slope	: 1.031	Density/Spine Ratio	: 0.573
Spine Angle	: 75.9	Spine Slope	: 3.970	Spine Intercept	: -20.2

Before Survey Verification

Performed Wed Dec 31 18:00:00 1969

Window 1	0.0	0.0	0.0	0.0	cps
Window 2	0.0	0.0	0.0	0.0	cps
Window 3	0.0	0.0	0.0	0.0	cps
Window 4	0.0	0.0	0.0	0.0	cps
Long Space	0.0	0.0	0.0	0.0	cps
Short Space	0.0	0.0	0.0	0.0	cps
Measured Rho		0.0000	0.0000	0.0000	g/cc
Measured Correction		0.0000	0.0000	0.0000	g/cc
Measured Pe			0.0000	0.0000	

After Survey Verification

Performed Wed Dec 31 18:00:00 1969

Window 1	0.0	0.0	0.0	0.0	cps
Window 2	0.0	0.0	0.0	0.0	cps
Window 3	0.0	0.0	0.0	0.0	cps
Window 4	0.0	0.0	0.0	0.0	cps
Long Space	0.0	0.0	0.0	0.0	cps
Short Space	0.0	0.0	0.0	0.0	cps
Measured Rho		0.0000	0.0000	0.0000	g/cc
Measured Correction		0.0000	0.0000	0.0000	g/cc
Measured Pe			0.0000	0.0000	

### Compensated Neutron Calibration Report

Serial Number: 6I  
Tool Model: G

#### CALIBRATION

Detector	Readings	Target	Normalization
Short Space	1.00 cps	1.00 cps	1.0000
Long Space	1.00 cps	1.00 cps	1.0000

#### PRE-SURVEY VERIFICATION

	Detector	Readings	Measured	Target
1)	Short Space	cps		
	Long Space	cps	pu	pu
2)	Short Space	cps		
	Long Space	cps	pu	
3)	Short Space	cps		
	Long Space	cps	pu	

#### POST-SURVEY VERIFICATION

	Detector	Readings	Measured	Target
1)	Short Space	cps		
	Long Space	cps	pu	pu
2)	Short Space	cps		
	Long Space	cps	pu	pu
3)	Short Space	cps		
	Long Space	cps	pu	pu

### Gamma Ray Calibration Report

Serial Number: GR6  
Tool Model: OPEN  
Performed: Tue Nov 08 13:43:57 2022

Calibrator Value: 150.0 GAPI

Background Reading: 0.0 cps

Calibrator Reading: 276.0 cps

Sensitivity: 0.8500 GAPI/cps