

MICRO LOG



Company		McCoy Petroleum Corporation	
Well		YOHN "A" #4-26	
Field		UNNAMED	
County		KIOWA	
State		KANSAS	
Location:		API #: 15-097-21869-0000 2310' FNL & 1650' FWL SW - SE - NW	
Permanent Datum		GROUND LEVEL Elevation 2239	
Log Measured From		KELLY BUSHING 11' A.G.L.	
Drilling Measured From		KELLY BUSHING	
SEC 26 TWP 30S RGE 19W		Elevation K.B. 2250 D.F. 2248 G.L. 2239	
Date	12/30/22		
Run Number	TWO		
Depth Driller	5280		
Depth Logger	5278		
Bottom Logged Interval	5262		
Top Log Interval	4200		
Casing Driller	8 5/8"@634'		13 3/8"@250'
Casing Logger	636		
Bit Size	7 7/8"		
Type Fluid in Hole	CHEMICAL MUD		CHLORIDES: 3,400 PPM
Density / Viscosity	9.4/53		
pH / Fluid Loss	11.0/7.2		
Source of Sample	FLOWLINE		
Rm @ Meas. Temp	.950@74F		
Rmf @ Meas. Temp	.713@74F		
Rmc @ Meas. Temp	1.14@74F		
Source of Rmf / Rmc	MEASURED		
Rm @ BHT	.549@128F		
Time Circulation Stopped	5 HOURS		
Time Logger on Bottom	7:15 P.M.		
Maximum Recorded Temperature	128F		
Equipment Number	8916		
Location	HAYS, KANSAS		
Recorded By	JEFF LUEBBERS		
Witnessed By	BLAKE MILLER		

<<< Fold Here >>>

All interpretations are opinions based on inferences from electrical or other measurements and we cannot and do not guarantee the accuracy or correctness of any interpretation, and we shall not, except in the case of gross or willful negligence on our part, be liable or responsible for any loss, costs, damages, or expenses incurred or sustained by anyone resulting from any interpretation made by any of our officers, agents or employees. These interpretations are also subject to our general terms and conditions set out in our current Price Schedule.

Comments

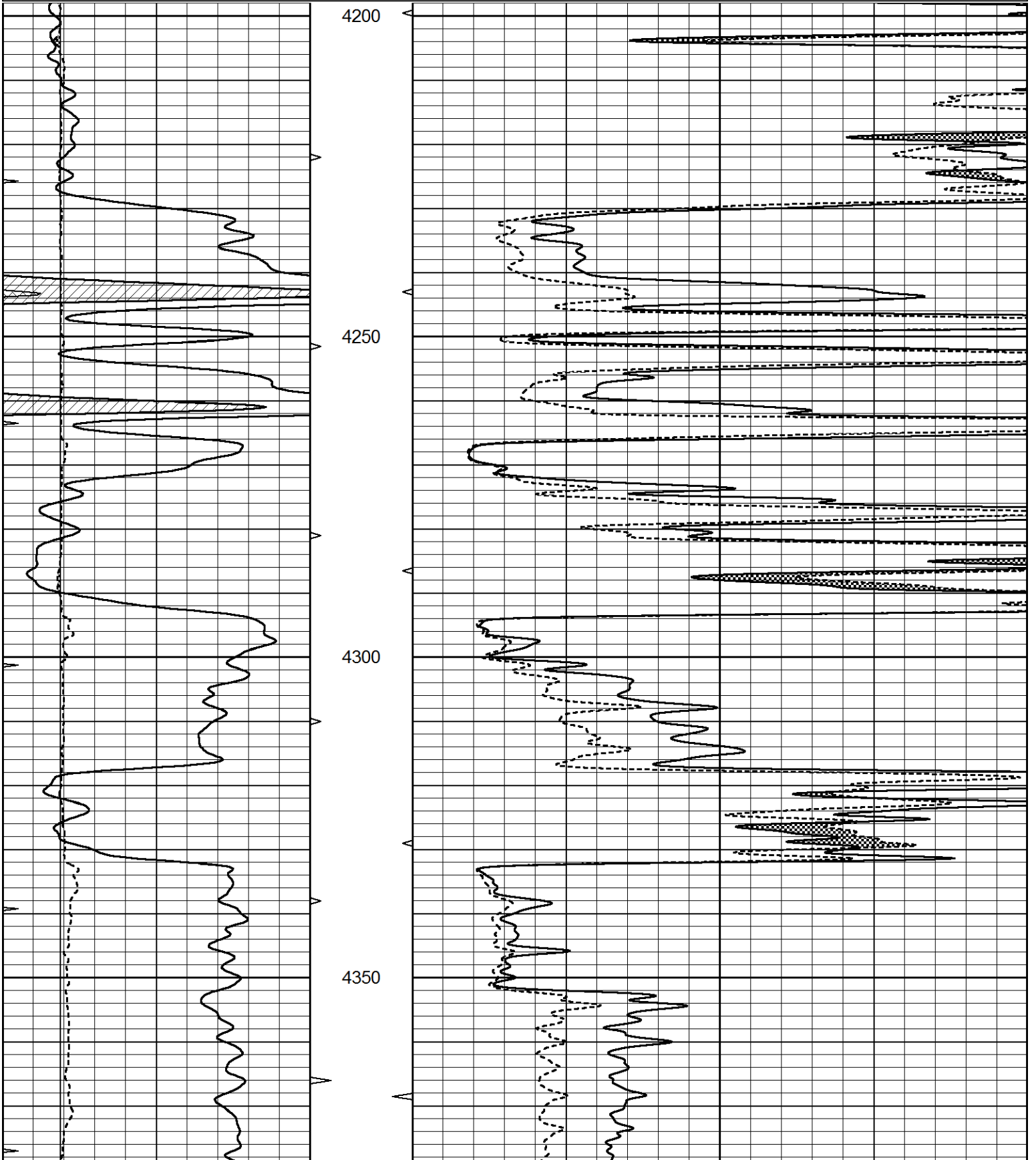
THANK YOU FOR USING ELI WIRELINE, HAYS, KS. (785) 628-6395
 DIRECTIONS:
 COLDWATER, KS., N. ON HWY 183 TO (COMANCHE/KIOWA COUNTY LINE) 3W. ON "A RD.", TO
 "21ST. AVE" 1 1/2 N., E. INTO

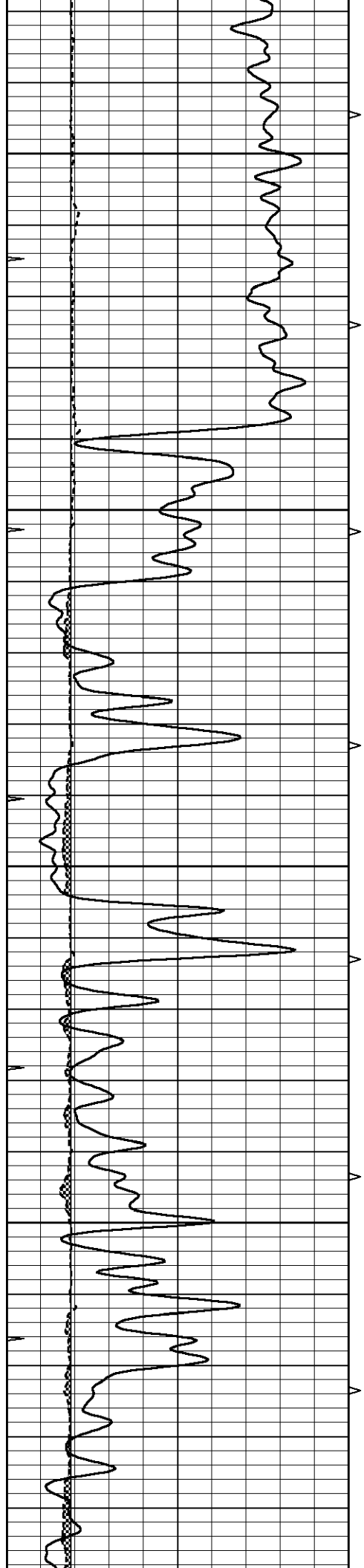


MAIN SECTION

Database File 7426pe.db
 Dataset Pathname pass6.1
 Presentation Format _micro
 Dataset Creation Fri Dec 30 20:08:18 2022
 Charted by Depth in Feet scaled 1:240

0	GAMMA RAY (GAPI)	150	ABHV	0	MEL1.5 (Ohm-m)	40
6	CALIPER (in)	16	10 (ft3)	0	MEL2.0 (Ohm-m)	40
0	MINMK	20	TBHV			
			0 (ft3)	10		



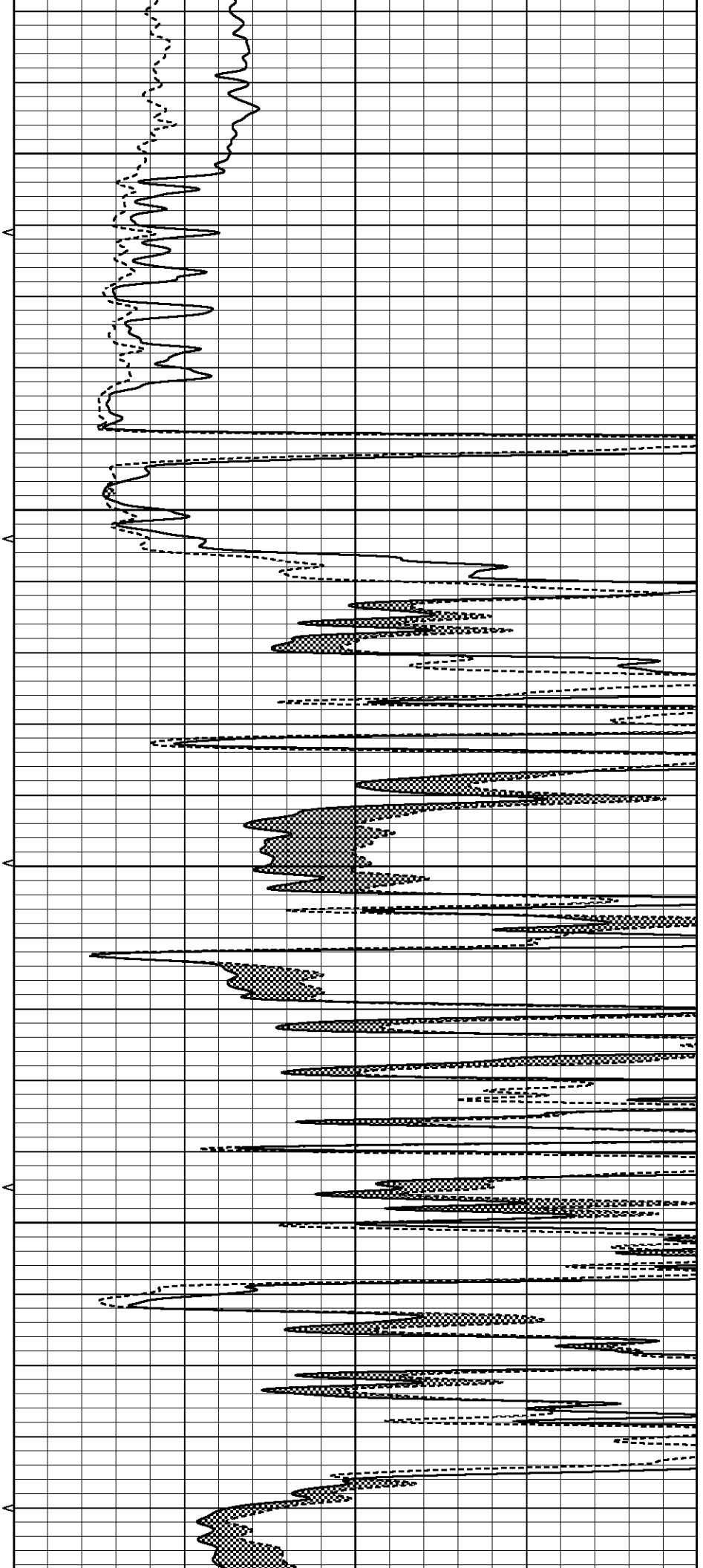


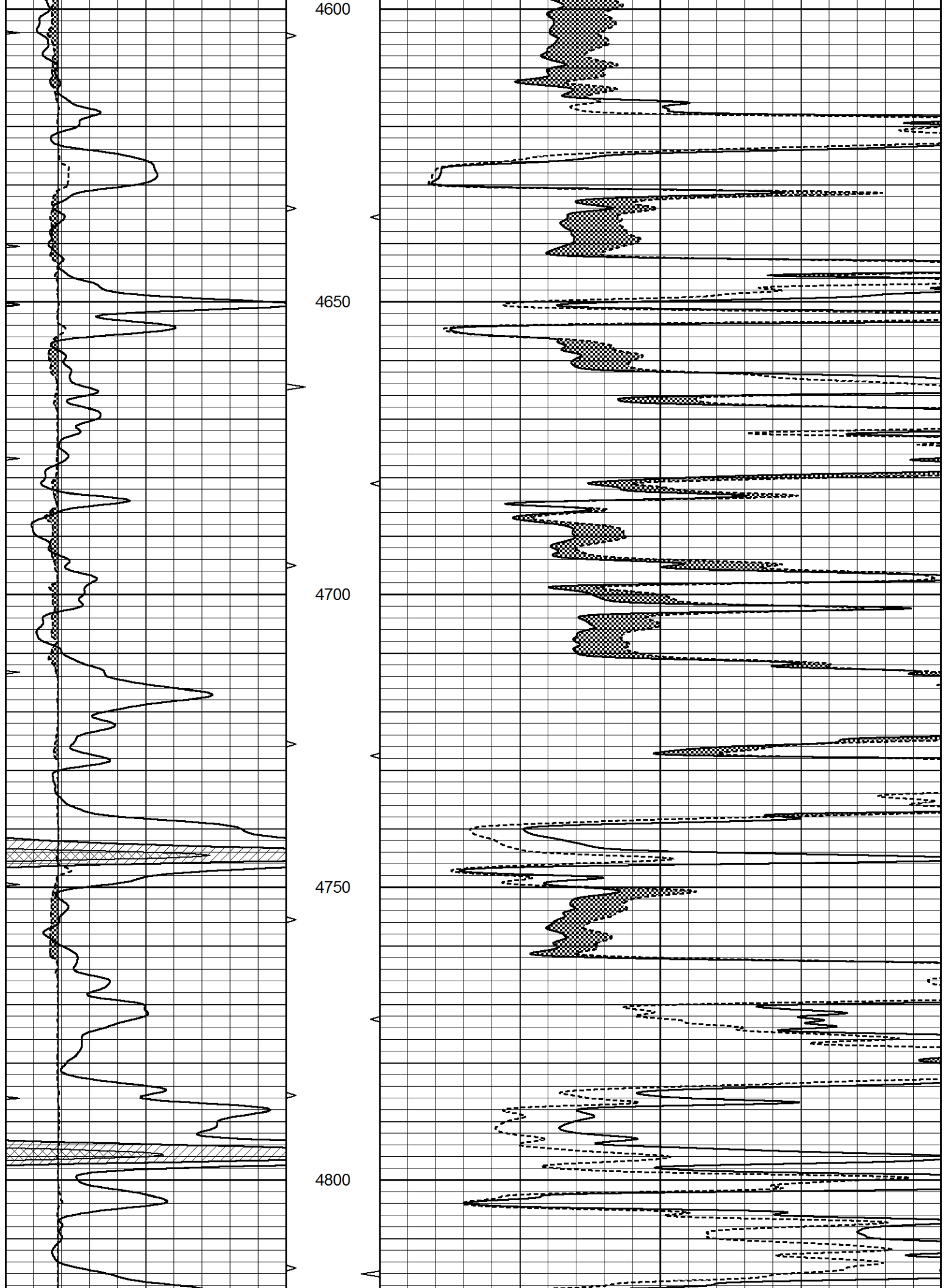
4400

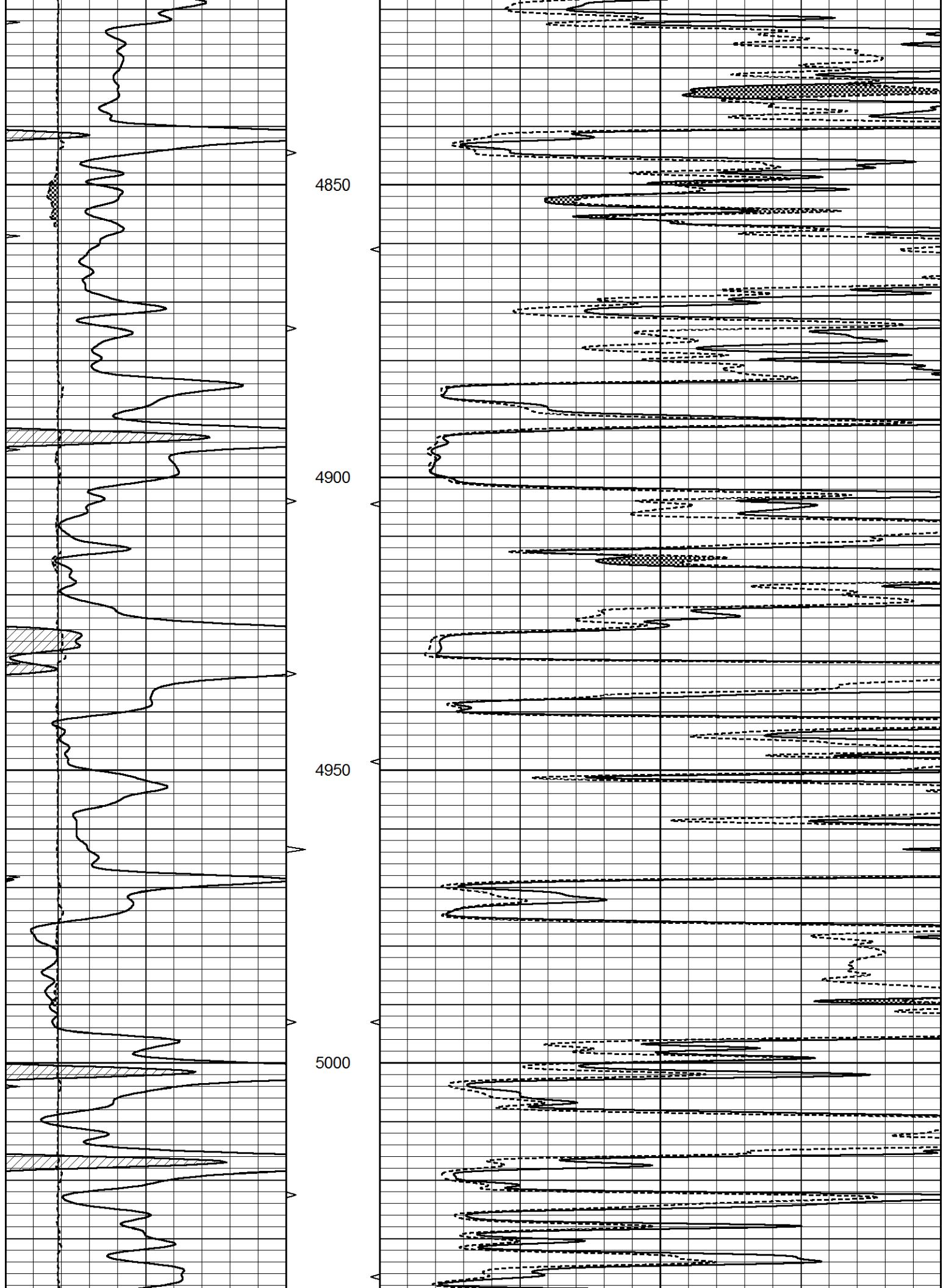
4450

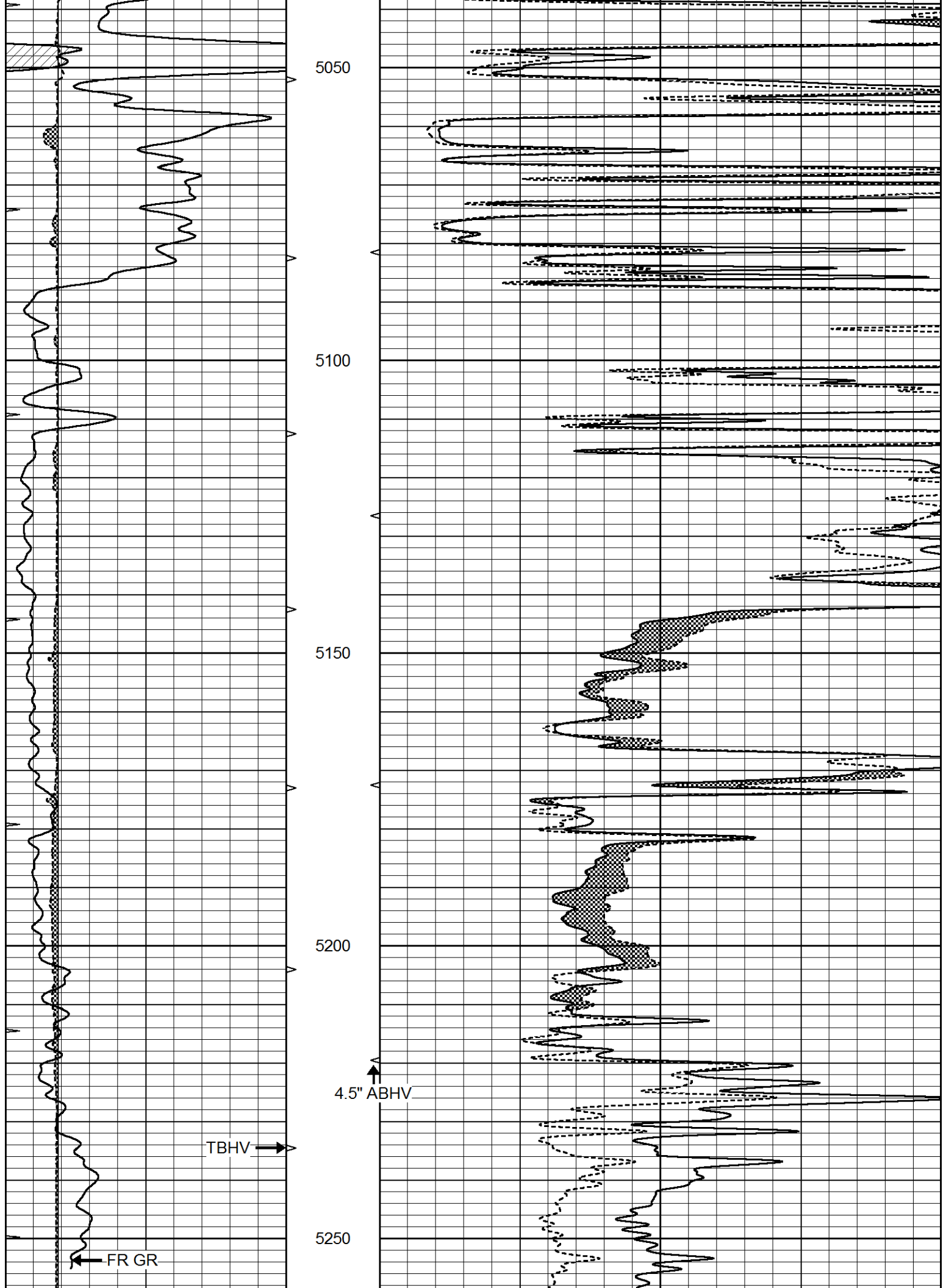
4500

4550









FR MELCAL

MEL2.0 MEL1.5

LTD 5278

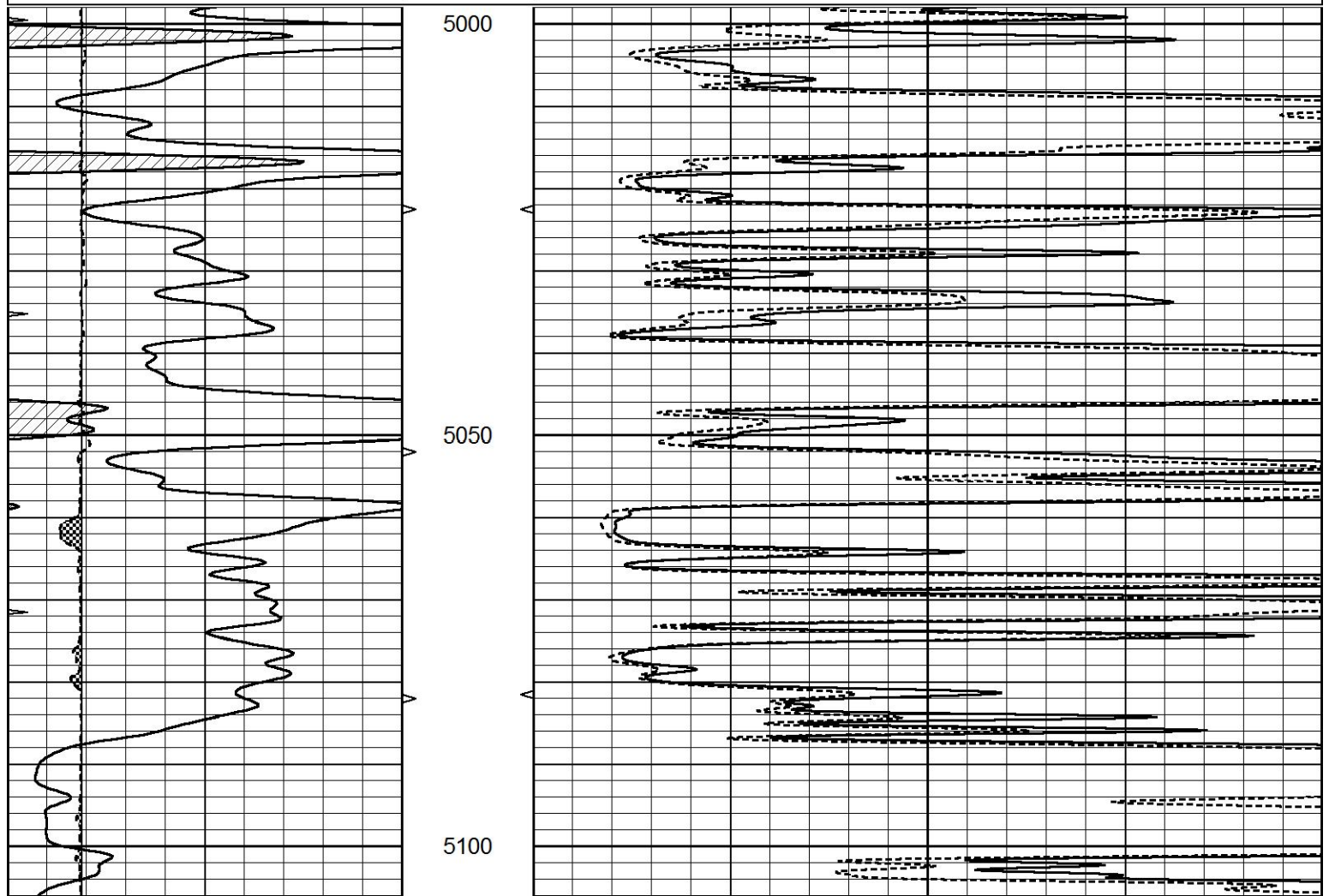
0	GAMMA RAY (GAPI)	150	ABHV	0	MEL1.5 (Ohm-m)	40
6	CALIPER (in)	16	10 (ft3)	0	MEL2.0 (Ohm-m)	40
0	MINMK	20	TBHV			
			0 (ft3)	10		

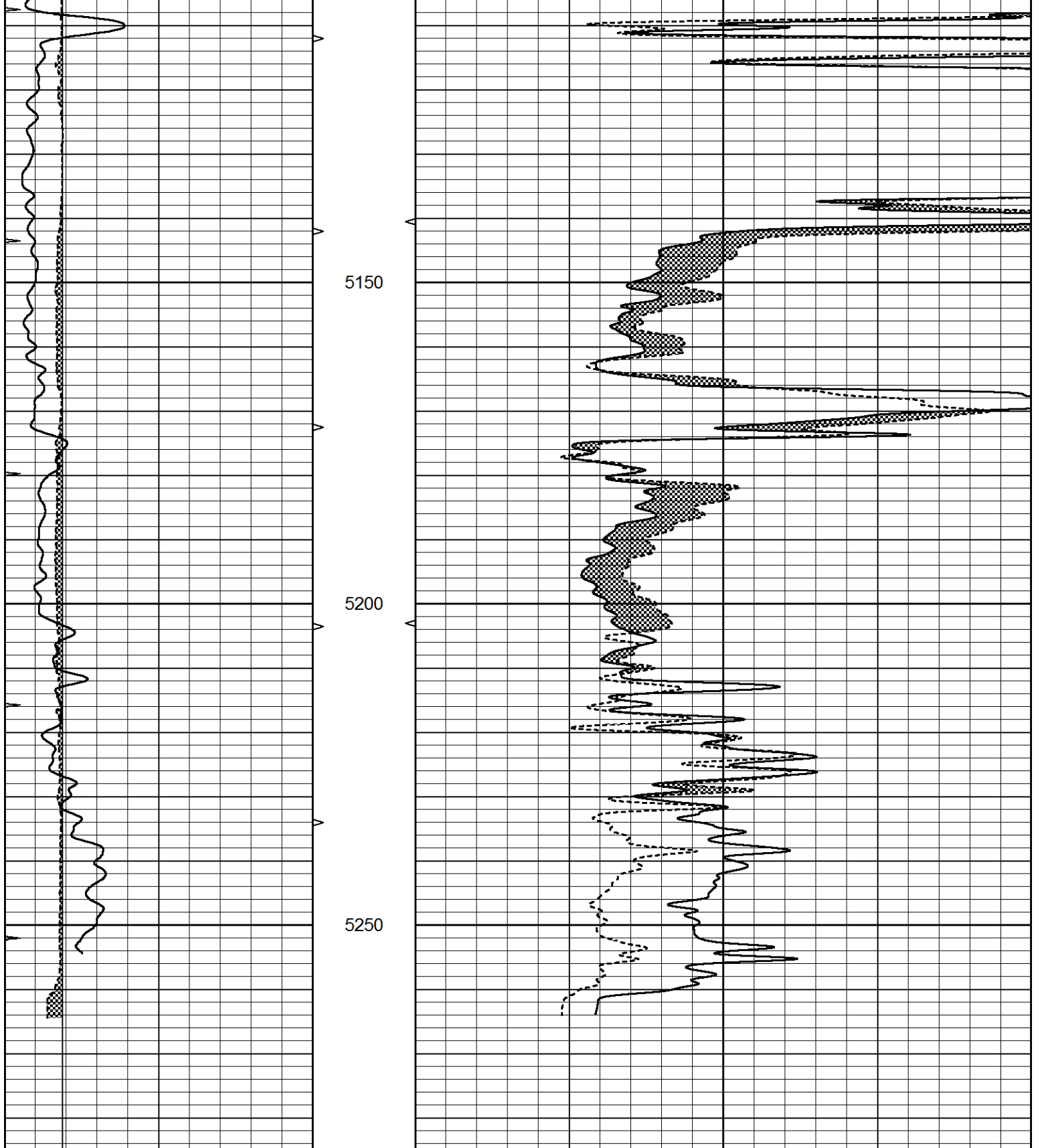


REPEAT SECTION

Database File 7426pe.db
 Dataset Pathname pass5.2
 Presentation Format _micro
 Dataset Creation Fri Dec 30 19:40:41 2022
 Charted by Depth in Feet scaled 1:240

0	GAMMA RAY (GAPI)	150	ABHV	0	MEL1.5 (Ohm-m)	40
6	CALIPER (in)	16	10 (ft3)	0	MEL2.0 (Ohm-m)	40
0	MINMK	20	TBHV			
			0 (ft3)	10		





0	GAMMA RAY (GAPI)	150	ABHV	0	MEL1.5 (Ohm-m)	40
6	CALIPER (in)	16	10 (ft3)	0	MEL2.0 (Ohm-m)	40
0	MINMK	20	TBHV			
			0 (ft3)	10		

Calibration Report

Database File 7426pe.db
 Dataset Pathname pass6.1
 Dataset Creation Fri Dec 30 20:08:18 2022

MICRO Calibration Report

Serial Number:	MICRO6
Tool Model:	PROBE
Performed:	Thu Dec 29 09:33:49 2022

Caliper Calibration:	Gain=-2.763	Offset=18.639
----------------------	-------------	---------------

	Low Cal	High Cal
References	8.000	16.000
Readings	3.850	0.955

1.5" Calibration:	Gain=40.000	Offset=1.500
-------------------	-------------	--------------

	Low Cal	High Cal
References	0.000	20.000
Readings	0.002	0.624

2" Calibration:	Gain=50.000	Offset=1.000
-----------------	-------------	--------------

	Low Cal	High Cal
References	0.000	20.000
Readings	0.006	0.468

Gamma Ray Calibration Report

Serial Number:	GR5
Tool Model:	OPEN
Performed:	Wed Dec 21 04:12:58 2022

Calibrator Value:	1.0	GAPI
-------------------	-----	------

Background Reading:	0.0	cps
Calibrator Reading:	1.0	cps

Sensitivity:	0.6000	GAPI/cps
--------------	--------	----------