

MICRO LOG



Company DEUTSCH OIL COMPANY
 Well BAUMAN #8-4
 Field BAUMAN
 County PRATT State KANSAS

Location: API #: 15-151-22596-0000
 4316' FSL & 2310' FEL
 N/2 - SW - NW - NE
 SEC 4 TWP 26S RGE 11W
 Permanent Datum GROUND LEVEL Elevation 1835
 Log Measured From KELLY BUSHING 7' A.G.L.
 Drilling Measured From KELLY BUSHING
 Other Services CDL/CNL/PE DIL/SONIC
 Elevation K.B. 1842 D.F. 1840 G.L. 1835

Date	8/23/24		
Run Number	TWO		
Depth Driller	4200		
Depth Logger	4200		
Bottom Logged Interval	4184		
Top Log Interval	3200		
Casing Driller	8.675@265		
Casing Logger	265		
Bit Size	7.785		
Type Fluid in Hole	CHEMICAL MUD	CHLORIDES 8,000 PPM	
Density / Viscosity	9.2/58		
pH / Fluid Loss	9.5/10.8		
Source of Sample	FLOWLINE		
Rm @ Meas. Temp	.550@92F		
Rmf @ Meas. Temp	.413@92F		
Rmc @ Meas. Temp	.660@92F		
Source of Rmf / Rmc	MEASUREMENT		
Rm @ BHT	.429@118F		
Time Circulation Stopped	3.5 HOURS		
Time Logger on Bottom	9:00 P.M.		
Maximum Recorded Temperature	118F		
Equipment Number	922339		
Location	HAYS, KANSAS		
Recorded By	JEFF LUEBBERS		
Witnessed By	AARON YOUNG		

<<< Fold Here >>>

All interpretations are opinions based on inferences from electrical or other measurements and we cannot and do not guarantee the accuracy or correctness of any interpretation, and we shall not, except in the case of gross or willful negligence on our part, be liable or responsible for any loss, costs, damages, or expenses incurred or sustained by anyone resulting from any interpretation made by any of our officers, agents or employees. These interpretations are also subject to our general terms and conditions set out in our current Price Schedule.

15-151-22596-0000 Comments

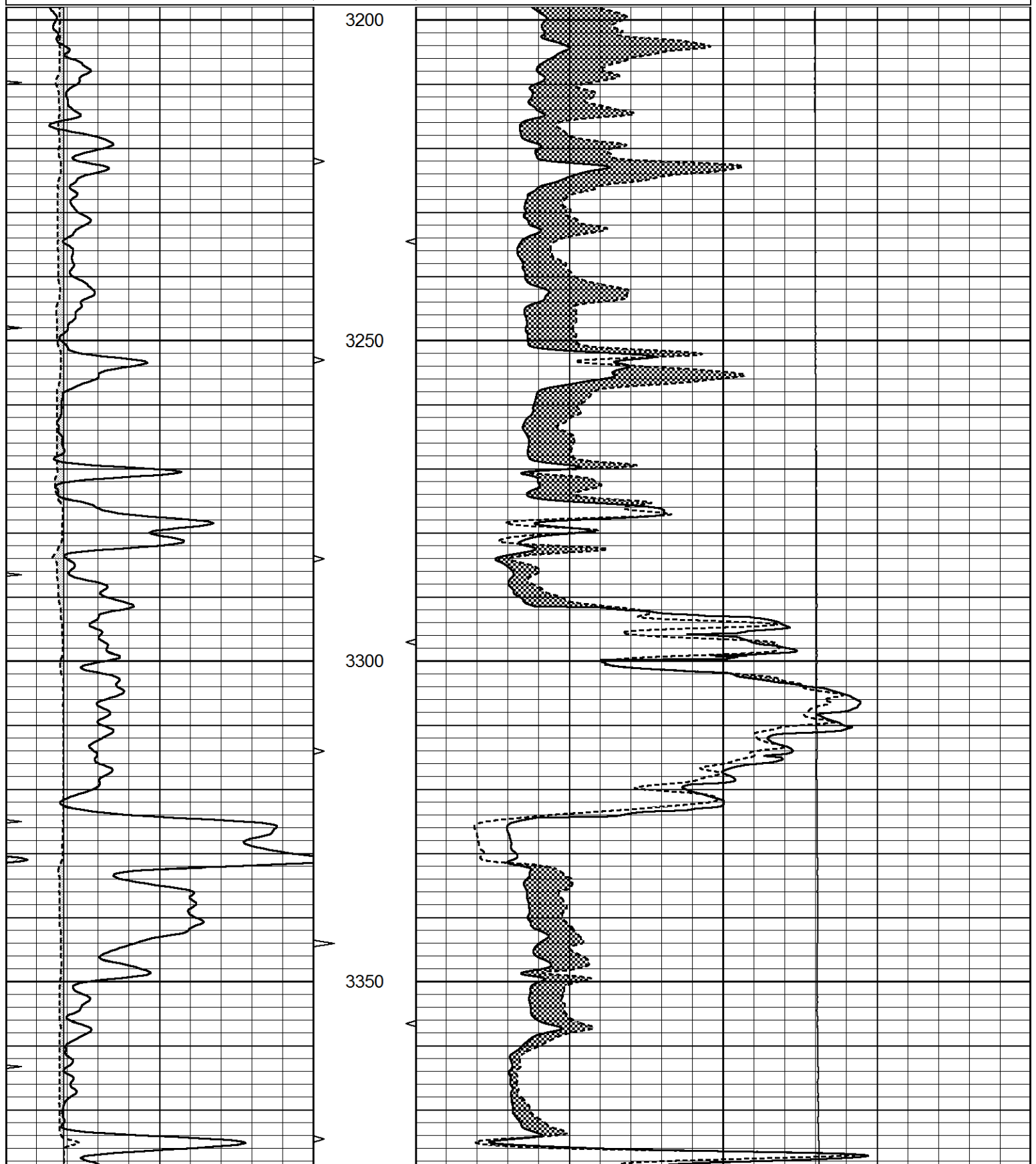
THANK YOU FOR USING ELI WIRELINE HAYS. KANSAS (785) 628-6395
 DIRECTIONS
 STAFFORD, KS., 9S. ON BLKTOP TO "SE 90TH ST.", 4 1/2E. TO "NE 120TH AVE.", 1/2 S., W. INTO

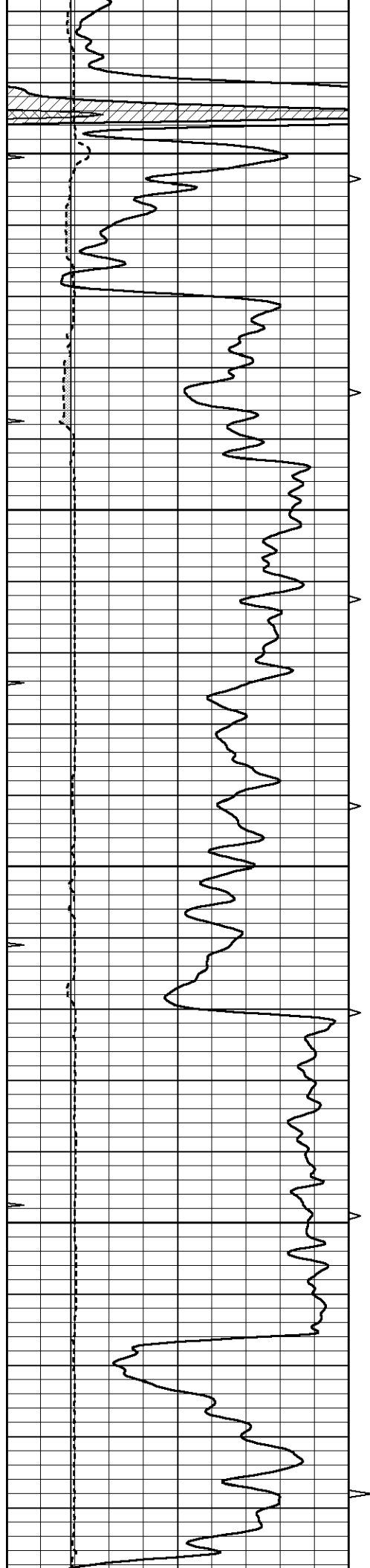


MAIN SECTION

Database File 8738pe.db
 Dataset Pathname pass6.3
 Presentation Format _micro
 Dataset Creation Fri Aug 23 23:11:35 2024
 Charted by Depth in Feet scaled 1:240

0	GAMMA RAY (GAPI)	150	ABHV	0	MEL1.5 (Ohm-m)	40
6	CALIPER (in)	16	10 (ft3)	0	MEL2.0 (Ohm-m)	40
0	MINMK	20	TBHV	0	LTEN (lb)	5000
			0 (ft3)	10		



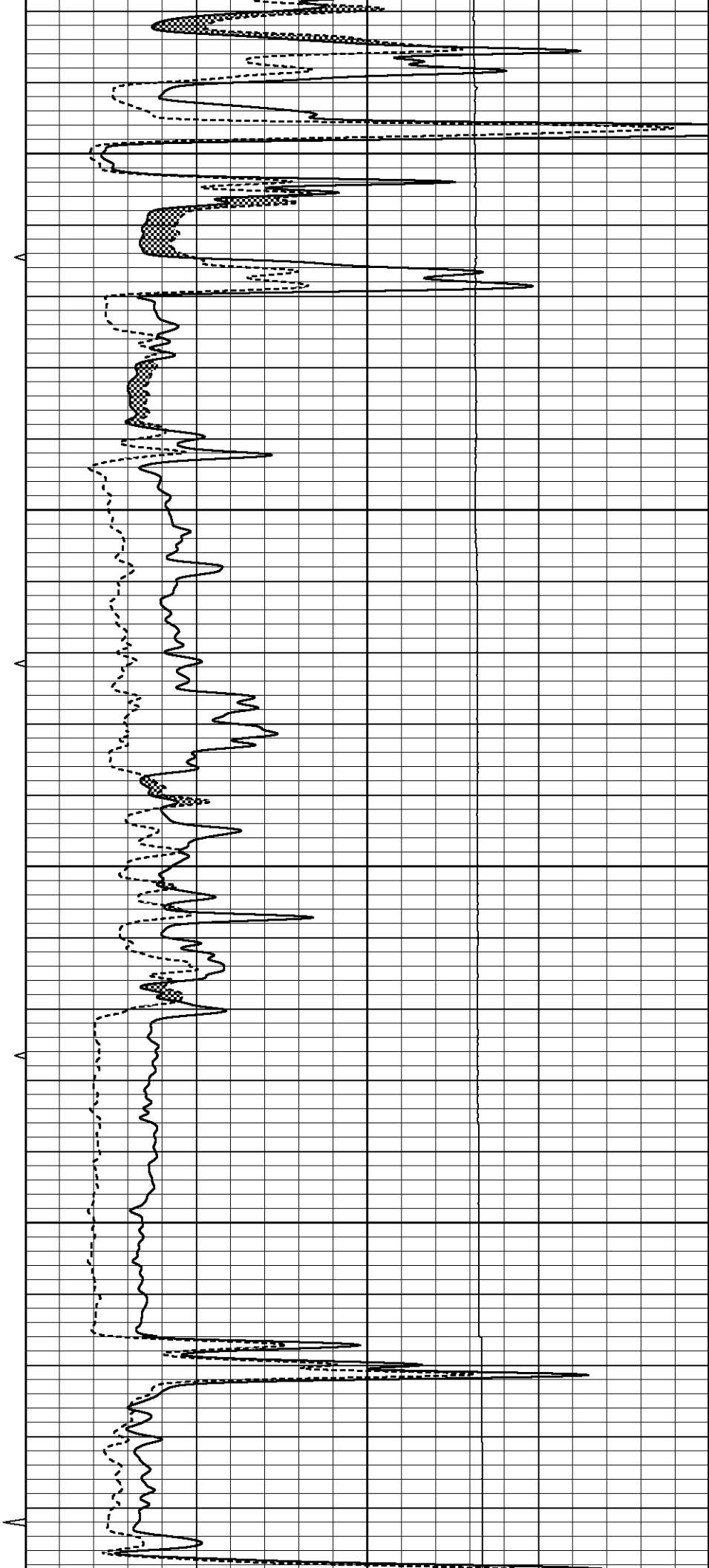


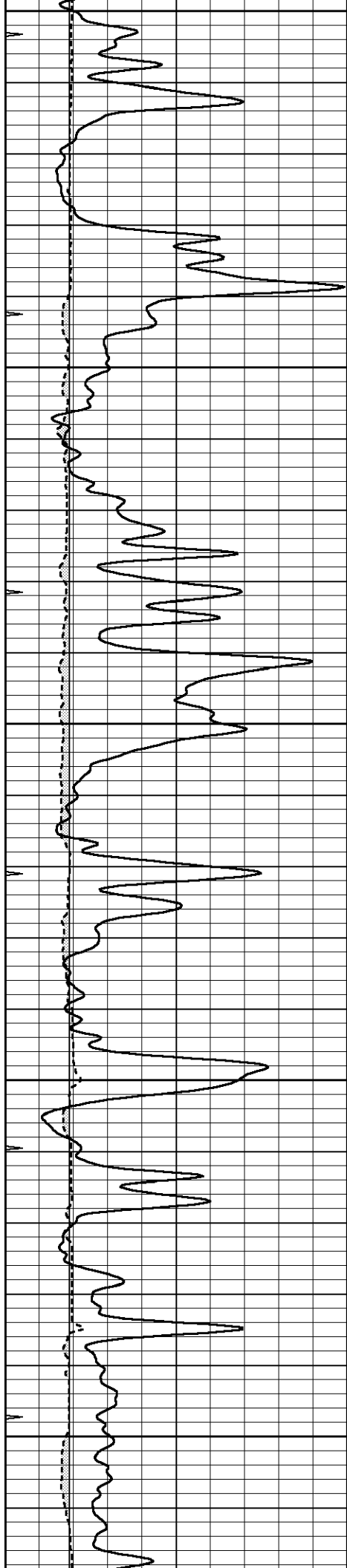
3400

3450

3500

3550





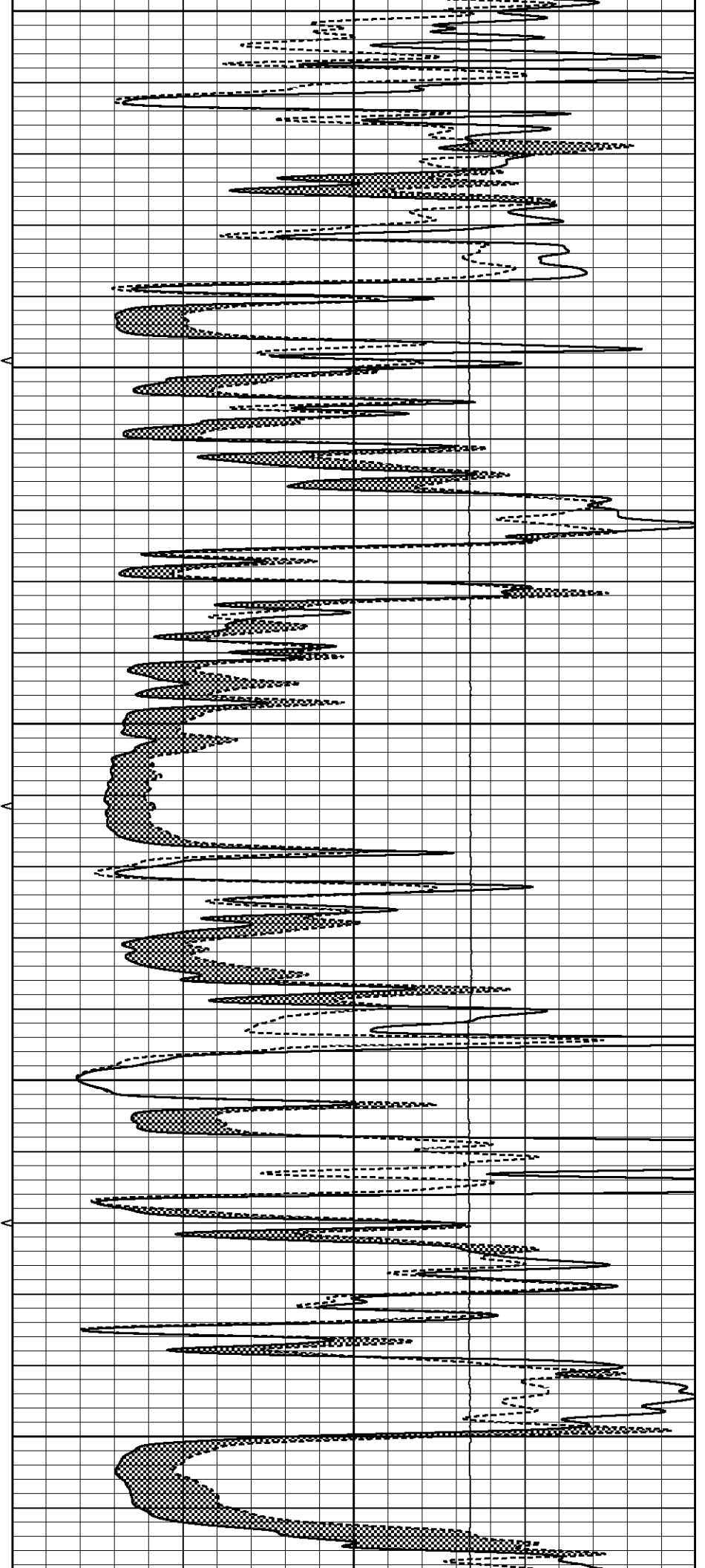
3600

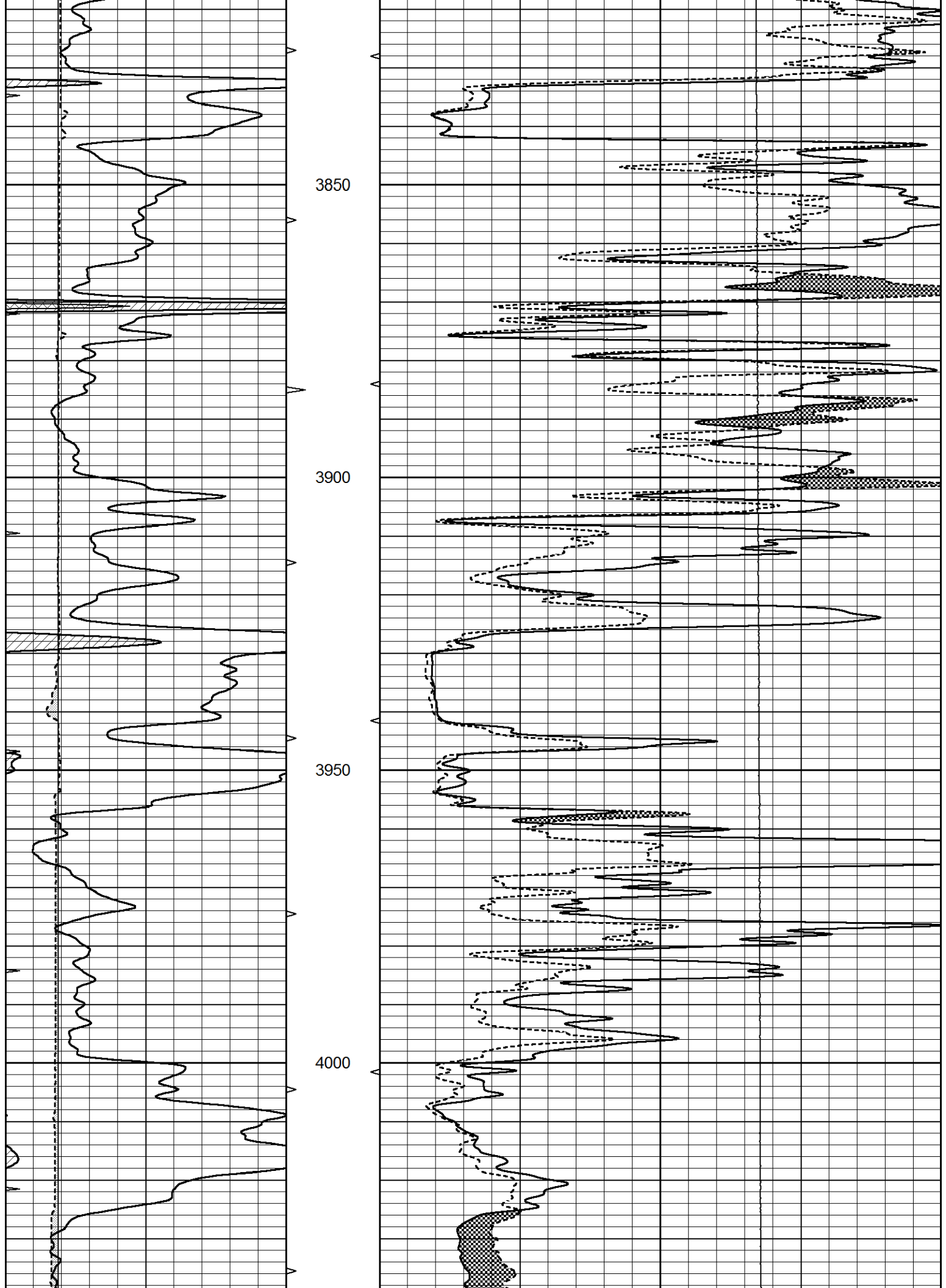
3650

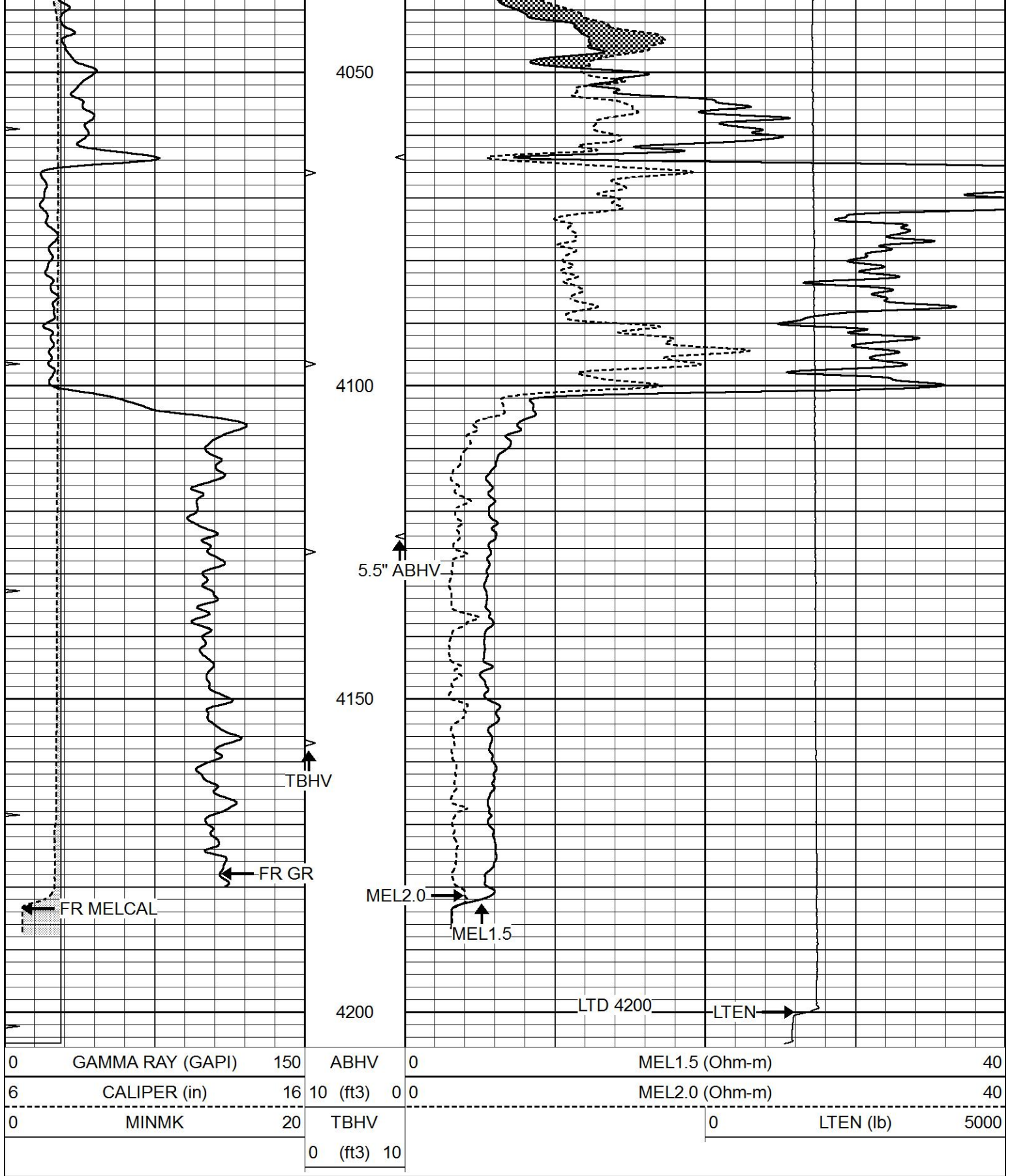
3700

3750

3800

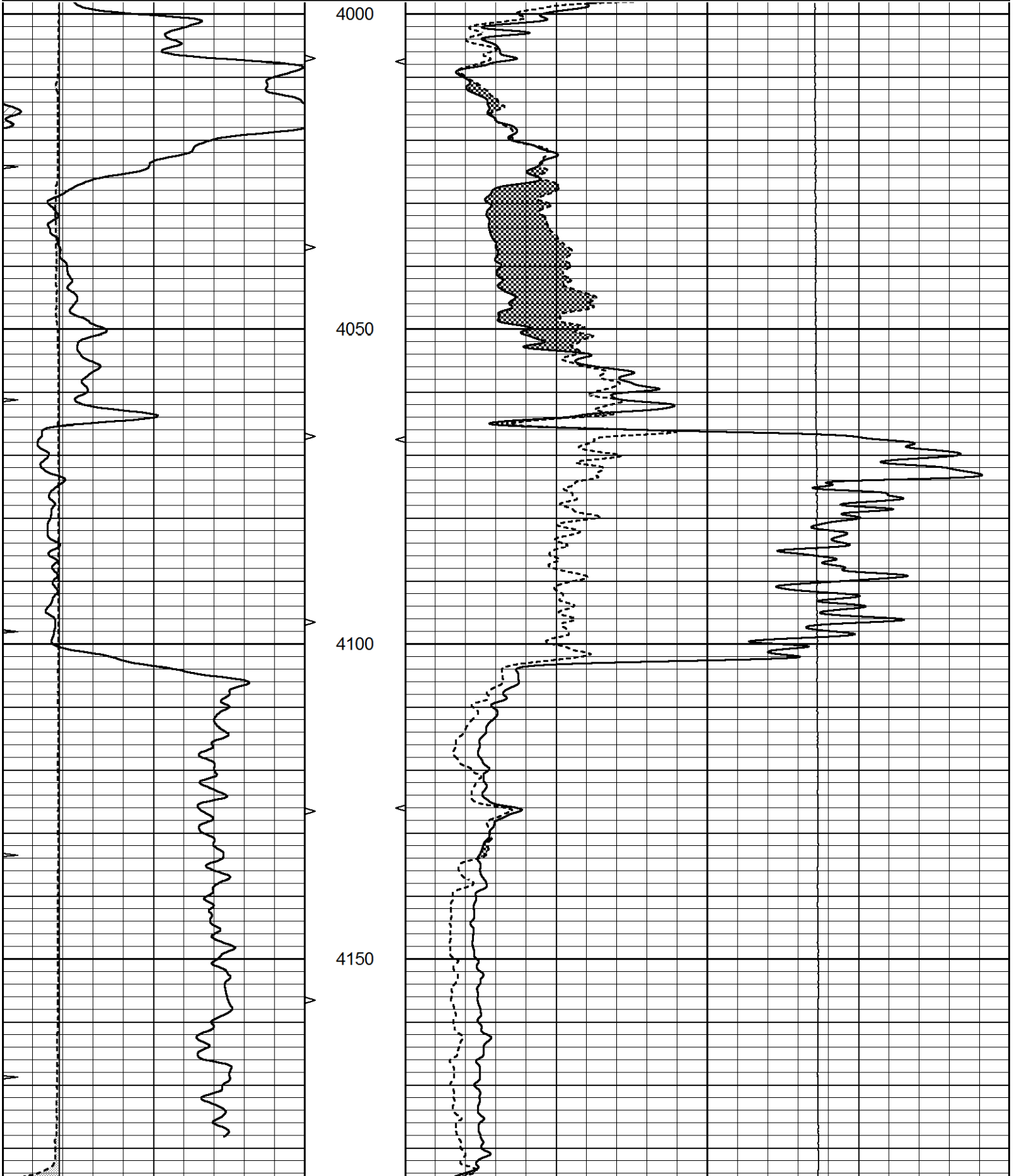






REPEAT SECTION

0	GAMMA RAY (GAPI)	150	ABHV	0	MEL1.5 (Ohm-m)	40	
6	CALIPER (in)	16	10 (ft3)	0	MEL2.0 (Ohm-m)	40	
0	MINMK	20	TBHV		0	LTEN (lb)	5000
			0 (ft3)	10			



			4200			
0	GAMMA RAY (GAPI)	150	ABHV	0	MEL1.5 (Ohm-m)	40
6	CALIPER (in)	16	10 (ft3) 0	0	MEL2.0 (Ohm-m)	40
0	MINMK	20	TBHV		0	LTEN (lb) 5000
			0 (ft3) 10			

Calibration Report			
Database File	8738pe.db		
Dataset Pathname	pass6.3		
Dataset Creation	Fri Aug 23 23:11:35 2024		
MICRO Calibration Report			
Serial Number:	070911		
Tool Model:	ProbeN		
Performed:	Fri Aug 23 22:26:18 2024		
Caliper Calibration:	Gain=6.250	Offset=1.000	
	Low Cal	High Cal	
References	8.000	16.000	
Readings	1.120	2.400	
1.5" Calibration:	Gain=22.000	Offset=2.000	
	Low Cal	High Cal	
References	0.000	20.000	
Readings	0.017	1.218	
2" Calibration:	Gain=50.000	Offset=0.000	
	Low Cal	High Cal	
References	0.000	20.000	
Readings	0.015	1.051	
Gamma Ray Calibration Report			
Serial Number:	070558		
Tool Model:	OPEN_GR		
Performed:	Fri Aug 23 22:26:44 2024		
Calibrator Value:	1.0	GAPI	
Background Reading:	0.0	cps	
Calibrator Reading:	1.0	cps	
Sensitivity:	0.3200	GAPI/cps	