



**COMPENSATED
DENSITY/NEUTRON
PE LOG**

Company DEUTSCH OIL COMPANY
Well BAUMAN #8-4
Field BAUMAN
County PRATT
State KANSAS

Company DEUTSCH OIL COMPANY
Well BAUMAN #8-4
Field BAUMAN
County PRATT State KANSAS

Location: API #: 15-151-22596-0000
4316' FSL & 2310' FEL
N/2 - SW - NW - NE
SEC 4 TWP 26S RGE 11W
Permanent Datum GROUND LEVEL Elevation 1835
Log Measured From KELLY BUSHING 7' A.G.L.
Drilling Measured From KELLY BUSHING
Other Services
DILMEL
SONIC
Elevation
K.B. 1842
D.F. 1840
G.L. 1835

Date	8/23/24		
Run Number	ONE		
Depth Driller	4200		
Depth Logger	4200		
Bottom Logged Interval	4176		
Top Log Interval	3200		
Casing Driller	8.675@265		
Casing Logger	265		
Bit Size	7.785		
Type Fluid in Hole	CHEMICAL MUD	CHLORIDES 8,000 PPM	
Density / Viscosity	9.2/58		
pH / Fluid Loss	9.5/10.8		
Source of Sample	FLOWLINE		
Rm @ Meas. Temp	.550@92F		
Rmf @ Meas. Temp	.413@92F		
Rmc @ Meas. Temp	.660@92F		
Source of Rmf / Rmc	MEASUREMENT		
Rm @ BHT	.429@118F		
Time Circulation Stopped	2 HOURS		
Time Logger on Bottom	7:15 P.M.		
Maximum Recorded Temperature	118F		
Equipment Number	922339		
Location	HAYS, KANSAS		
Recorded By	JEFF LUEBBERS		
Witnessed By	AARON YOUNG		

<<< Fold Here >>>

All interpretations are opinions based on inferences from electrical or other measurements and we cannot and do not guarantee the accuracy or correctness of any interpretation, and we shall not, except in the case of gross or willful negligence on our part, be liable or responsible for any loss, costs, damages, or expenses incurred or sustained by anyone resulting from any interpretation made by any of our officers, agents or employees. These interpretations are also subject to our general terms and conditions set out in our current Price Schedule.

15-151-22596-0000 Comments

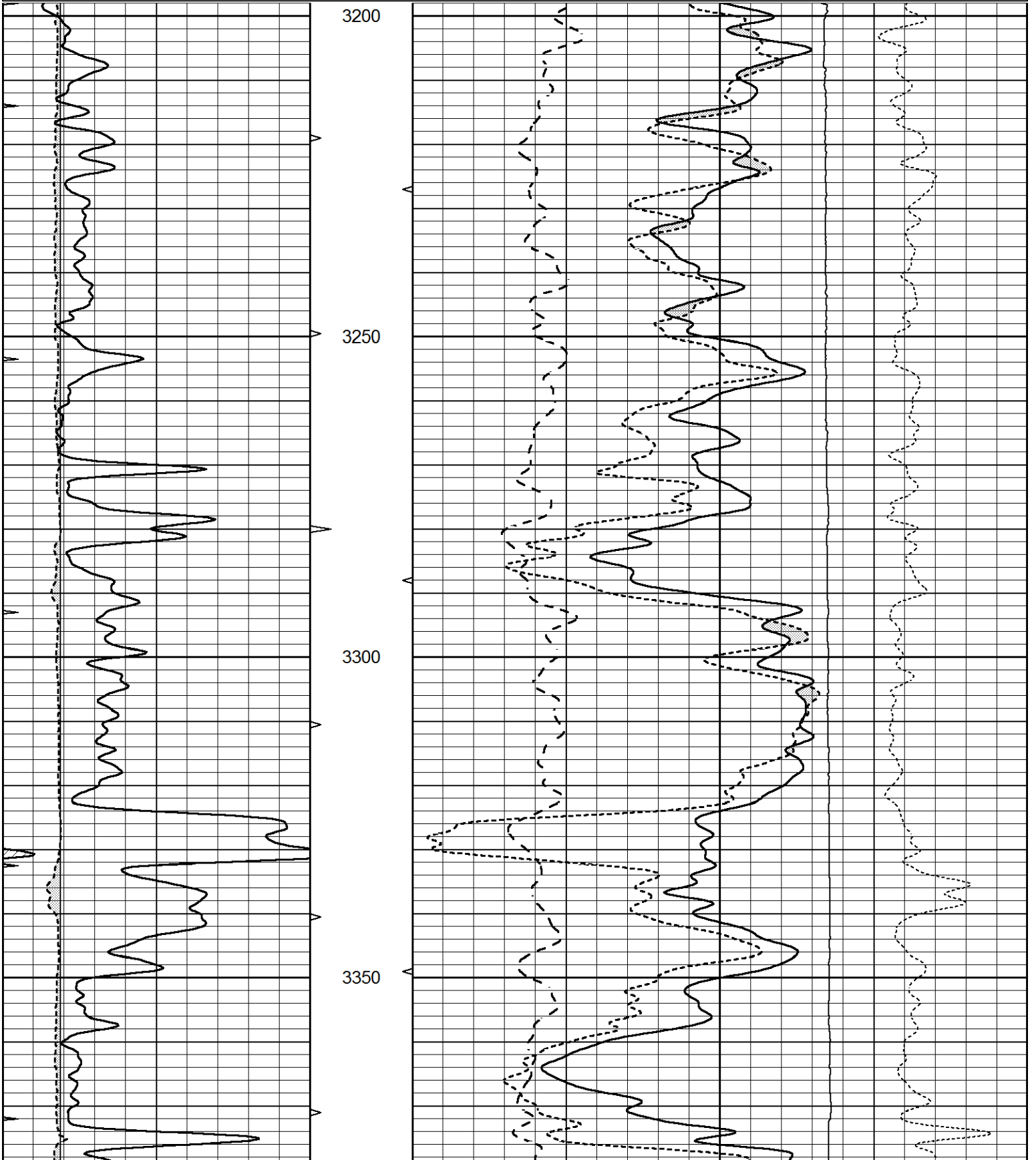
THANK YOU FOR USING ELI WIRELINE HAYS. KANSAS (785) 628-6395
DIRECTIONS
STAFFORD, KS., 9S. ON BLKTOP TO "SE 90TH ST.", 4 1/2E. TO "NE 120TH AVE.", 1/2 S., W. INTO

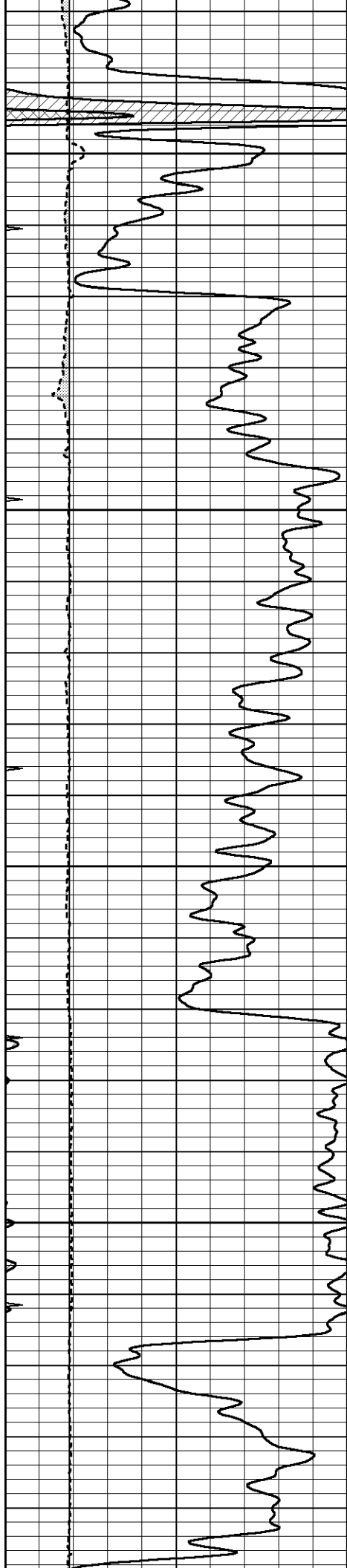


MAIN SECTION

Database File 8738pe.db
 Dataset Pathname pass3.1M
 Presentation Format _ldt_neu
 Dataset Creation Fri Aug 23 21:28:28 2024
 Charted by Depth in Feet scaled 1:240

0	GAMMA RAY (GAPI)	150	ABHV	30	COMPENSATED DENSITY (pu)			-10	
6	CALIPER (in)	16	10 (ft3)	0	COMPENSATED NEUTRON (pu)			-10	
0	MINMK	20	TBHV	0	PE	10	-0.25	CORRECTION (g/cc)	0.25
			0 (ft3)	10			0	LTEN (lb)	5000



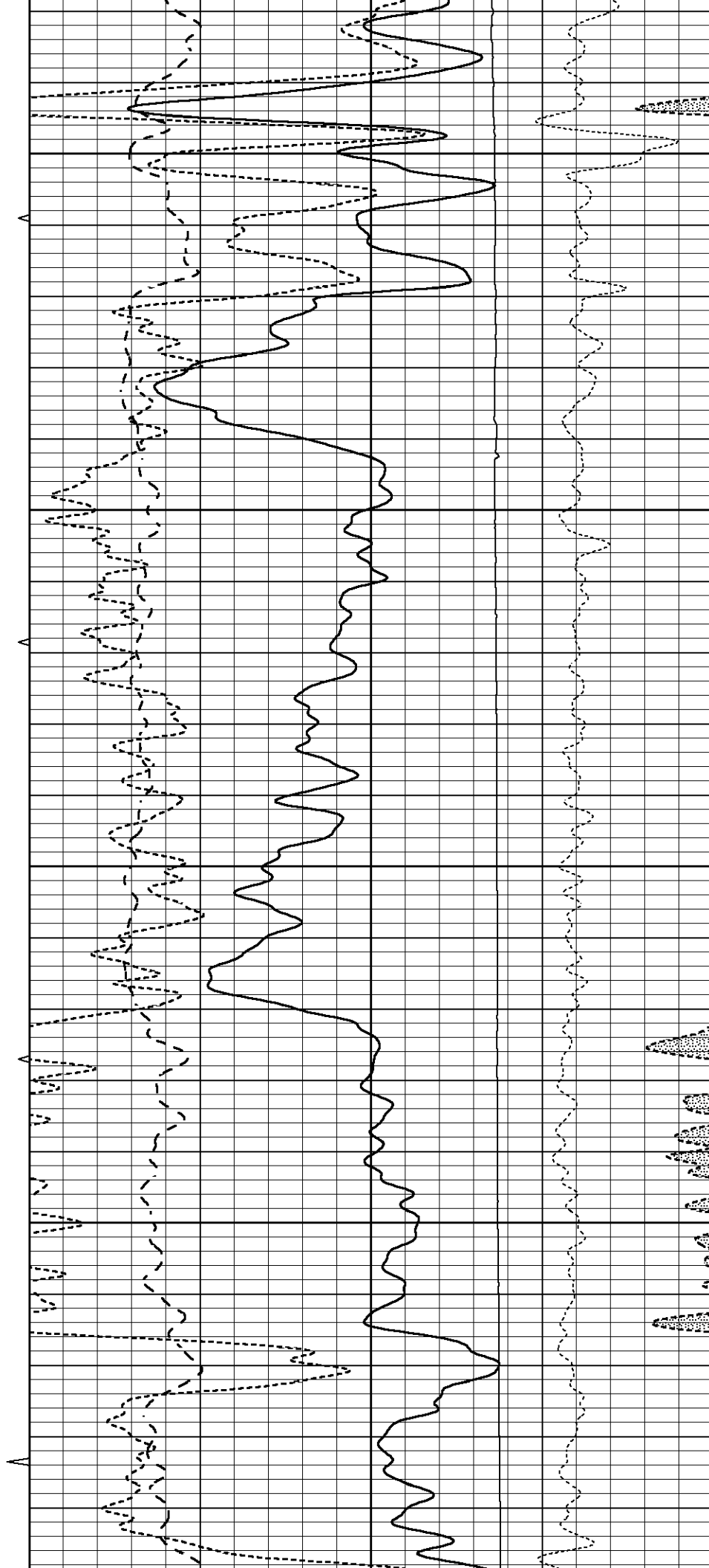


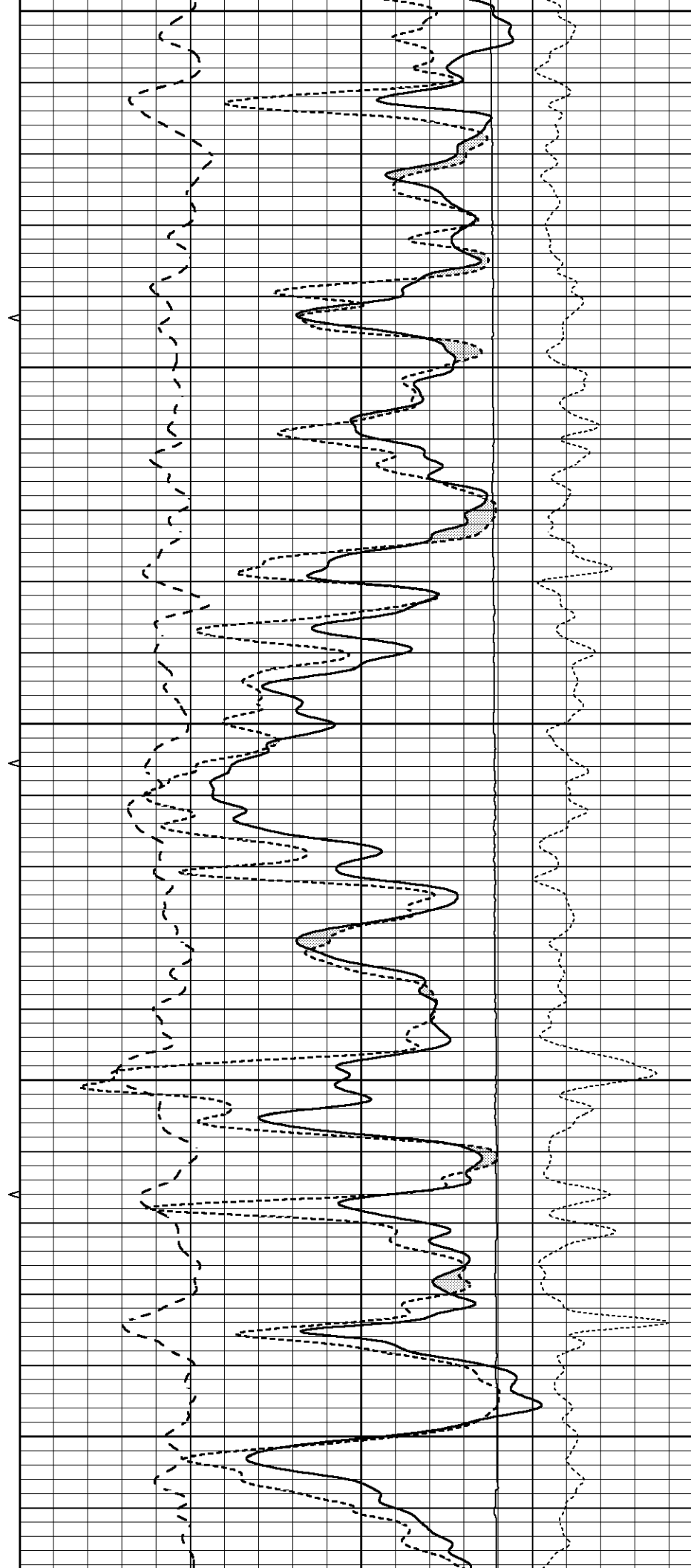
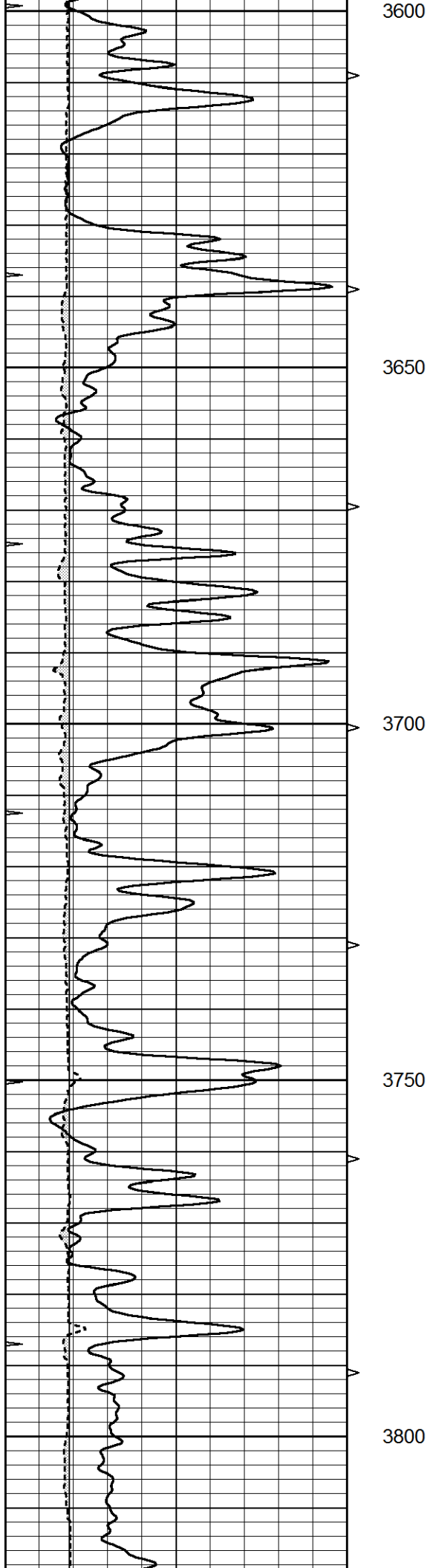
3400

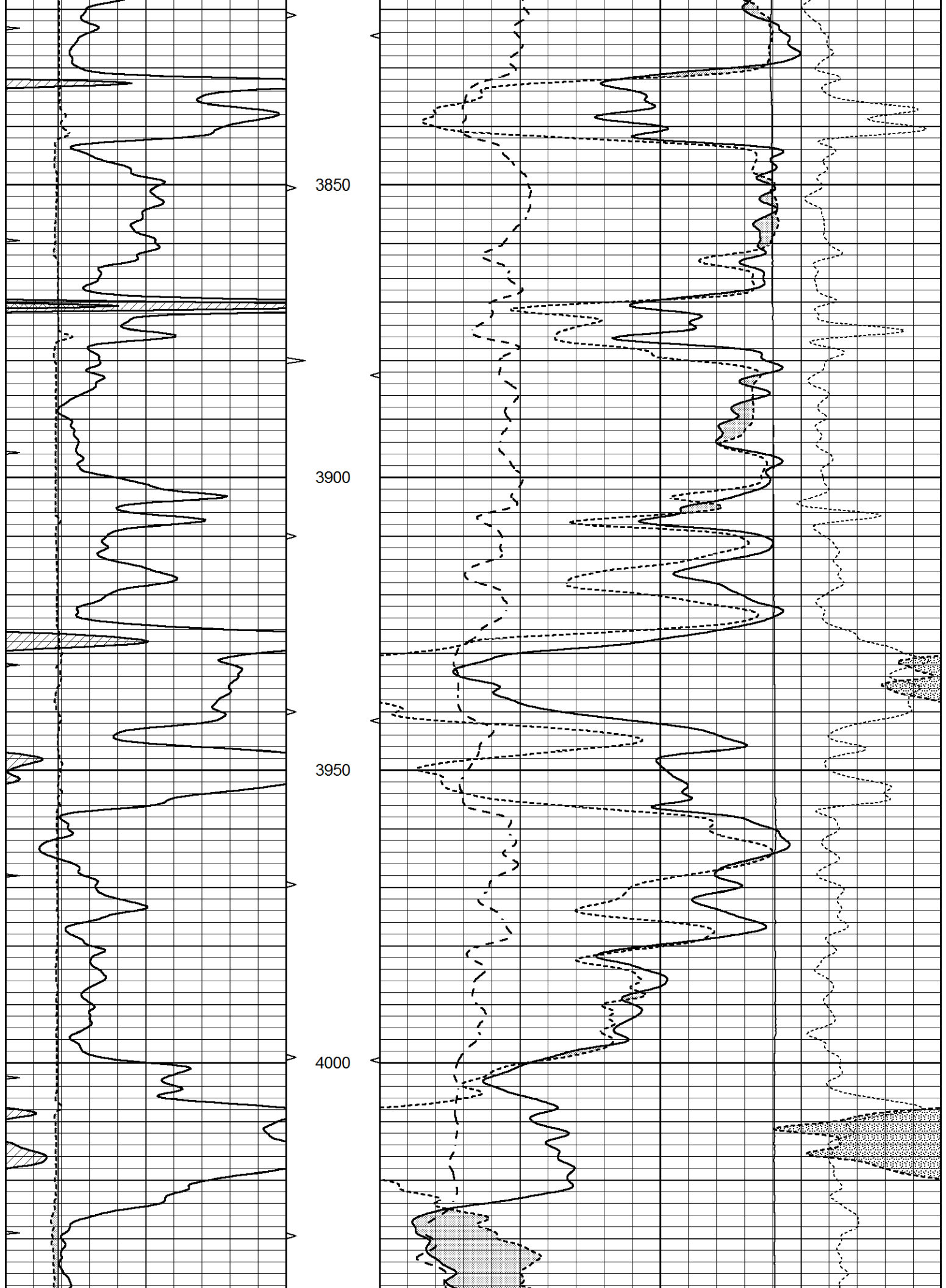
3450

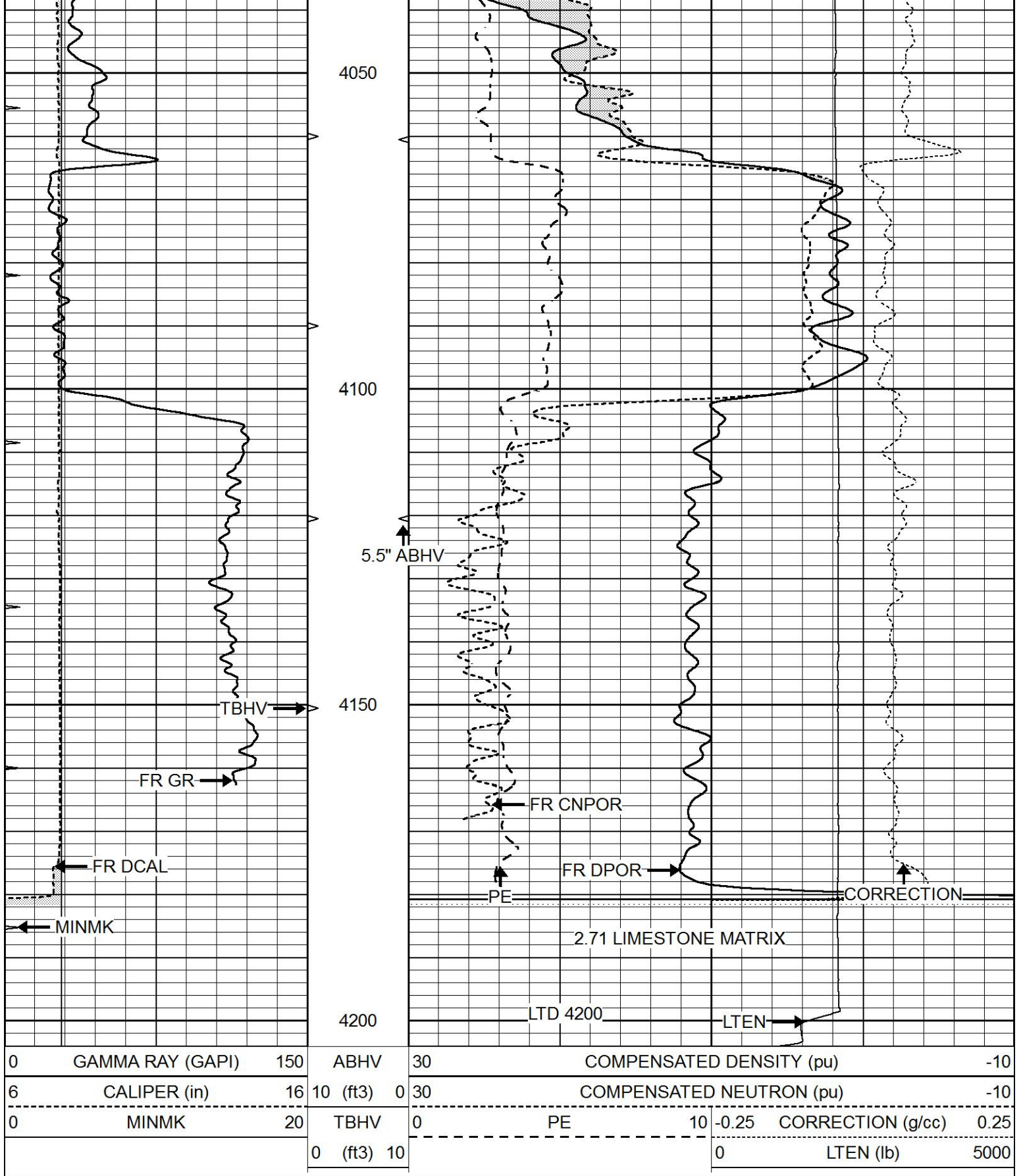
3500

3550



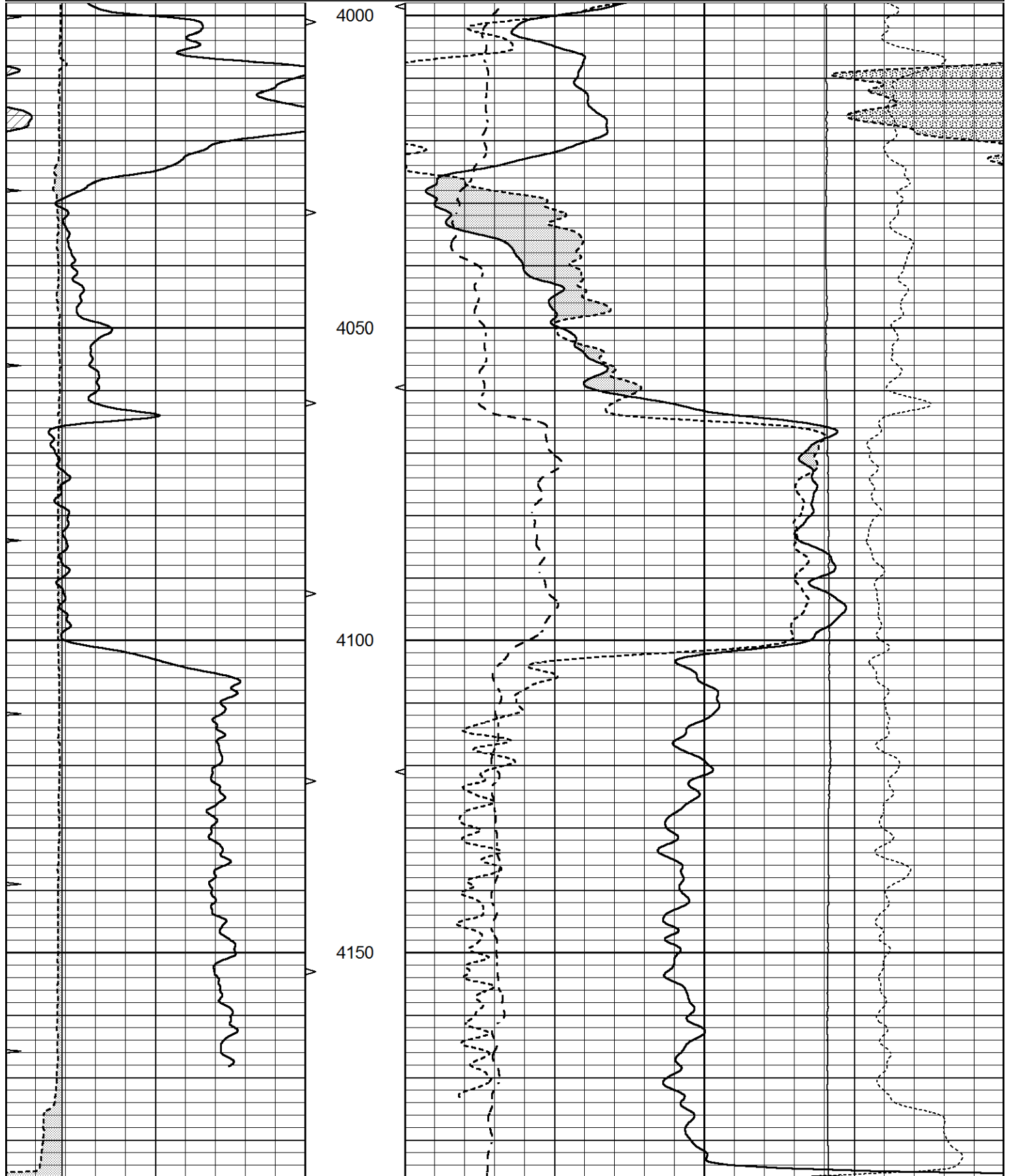






REPEAT SECTION

0	GAMMA RAY (GAPI)	150	ABHV	30	COMPENSATED DENSITY (pu)	-10	
6	CALIPER (in)	16	10 (ft3)	0	COMPENSATED NEUTRON (pu)	-10	
0	MINMK	20	TBHV	0	PE	10	
			0 (ft3)	10	-0.25	CORRECTION (g/cc)	0.25
					0	LTEN (lb)	5000



			4200					
0	GAMMA RAY (GAPI)	150	ABHV	30	COMPENSATED DENSITY (pu)			-10
6	CALIPER (in)	16	10 (ft3) 0	30	COMPENSATED NEUTRON (pu)			-10
0	MINMK	20	TBHV	0	PE	10	-0.25	CORRECTION (g/cc) 0.25
			0 (ft3) 10				0	LTEN (lb) 5000

Calibration Report

Database File 8738pe.db
 Dataset Pathname pass3.1M
 Dataset Creation Fri Aug 23 21:28:28 2024

Dual Induction Calibration Report

Serial-Model: PROBE8-DILG
 Surface Cal Performed: Fri Aug 23 20:39:23 2024
 Downhole Cal Performed: Mon Aug 14 00:39:25 2023
 After Survey Verification Performed: Mon Jul 28 11:08:27 2008

Surface Calibration

Loop:	Readings				References			Results	
	Air	Loop			Air	Loop		m	b
Deep	0.015	0.648	V	0.000	400.000	mmho/m	660.000	15.000	
Medium	0.029	0.796	V	0.000	464.000	mmho/m	650.000	-2.000	
Internal:	Zero	Cal		Zero	Cal		m	b	
Deep	0.017	0.657	V	0.000	400.000	mmho/m	625.153	-10.619	
Medium	0.016	0.757	V	0.000	464.000	mmho/m	625.992	-9.739	

Downhole Calibration

	Readings				References			Results	
	Zero	Cal			Zero	Cal		m'	b'
Deep	0.000	0.000	mmho/m	2.011	405.777	mmho/m	1.000	0.000	
Medium	0.000	0.000	mmho/m	7.590	503.393	mmho/m	1.000	0.000	
LL3		7.500	V		1500.000	Ohm-m			
		0.000	V		20.000	Ohm-m			
		-7.200	V		3800.000	mmho-m			

After Survey Verification

	Readings				Targets			Results	
	Zero	Cal			Zero	Cal		m'	b'
Deep	0.000	0.000	mmho/m	0.000	0.000	mmho/m	0.000	0.000	
Medium	0.000	0.000	mmho/m	0.000	0.000	mmho/m	0.000	0.000	
LL3		1.000	Ohm-m		1.000	Ohm-m			
		0.000	Ohm-m		0.000	Ohm-m			
		1.000	mmho-m		1.000	mmho-m			

Litho Density Calibration Report
 Serial: 004 Model: PRB

	Background	Magnesium	Aluminum	Aluminum+Fe	
Window 1	1154.2	10019.5	3137.9	2795.6	cps
Window 2	1054.4	8597.6	2733.4	2469.5	cps
Window 3	902.3	5241.4	1832.1	1719.3	cps
Window 4	251.9	261.1	255.8	252.9	cps
Long Space	0.0	7543.2	1679.0	1415.0	cps
Short Space	4.4	2049.3	1321.7	1116.8	cps
Rho		1.7100	2.5900	0.0000	g/cc
Pe		2.0000	2.7500	5.7900	
Rib Angle	: 43.7	Rib Slope	: 0.957	Density/Spine Ratio	: 0.562
Spine Angle	: 73.7	Spine Slope	: 3.426	Spine Intercept	: -17.2

Before Survey Verification

Performed Wed Dec 31 18:00:00 1969

	Background	Magnesium	Aluminum	Aluminum+Fe	
Window 1	0.0	0.0	0.0	0.0	cps
Window 2	0.0	0.0	0.0	0.0	cps
Window 3	0.0	0.0	0.0	0.0	cps
Window 4	0.0	0.0	0.0	0.0	cps
Long Space	0.0	0.0	0.0	0.0	cps
Short Space	0.0	0.0	0.0	0.0	cps
Measured Rho		0.0000	0.0000	0.0000	g/cc
Measured Correction		0.0000	0.0000	0.0000	g/cc
Measured Pe			0.0000	0.0000	

After Survey Verification

Performed Wed Dec 31 18:00:00 1969

	Background	Magnesium	Aluminum	Aluminum+Fe	
Window 1	0.0	0.0	0.0	0.0	cps
Window 2	0.0	0.0	0.0	0.0	cps
Window 3	0.0	0.0	0.0	0.0	cps
Window 4	0.0	0.0	0.0	0.0	cps
Long Space	0.0	0.0	0.0	0.0	cps
Short Space	0.0	0.0	0.0	0.0	cps
Measured Rho		0.0000	0.0000	0.0000	g/cc
Measured Correction		0.0000	0.0000	0.0000	g/cc
Measured Pe			0.0000	0.0000	

Compensated Neutron Calibration Report

Serial Number: 070807PMC
Tool Model: NABORS

PRE-SURVEY VERIFICATION

Detector	Readings	Measured	Target
Short Space	cps		
Long Space	cps	pu	pu

POST-SURVEY VERIFICATION

Detector	Readings	Measured	Target
Short Space	cps		
Long Space	cps	pu	pu

Gamma Ray Calibration Report

Serial Number: 070559

Tool Model: OPEN_GR
Performed: Fri Aug 23 11:44:05 2024

Calibrator Value: 1.0 GAPI

Background Reading: 0.0 cps
Calibrator Reading: 1.0 cps

Sensitivity: 0.3000 GAPI/cps