

SONIC
LOG



Company DEUTSCH OIL COMPANY
Well BAUMAN #8-4
Field BAUMAN
County PRATT State KANSAS

Location: API #: 15-151-22596-0000
4316' FSL & 2310' FEL
N/2 - SW - NW - NE
SEC 4 TWP 26S RGE 11W
Permanent Datum GROUND LEVEL Elevation 1835
Log Measured From KELLY BUSHING 7' A.G.L.
Drilling Measured From KELLY BUSHING
Other Services
CDL/CNL/PE
DIL/MEI
Elevation
K.B. 1842
D.F. 1840
G.L. 1835

Date	8/23/24		
Run Number	TWO		
Depth Driller	4200		
Depth Logger	4200		
Bottom Logged Interval	4192		
Top Log Interval	200		
Casing Driller	8.675@265		
Casing Logger	265		
Bit Size	7.785		
Type Fluid in Hole	CHEMICAL MUD	CHLORIDES 8,000 PPM	
Density / Viscosity	9.2/58		
pH / Fluid Loss	9.5/10.8		
Source of Sample	FLOWLINE		
Rm @ Meas. Temp	.550@92F		
Rmf @ Meas. Temp	.413@92F		
Rmc @ Meas. Temp	.660@92F		
Source of Rmf / Rmc	MEASUREMENT		
Rm @ BHT	.429@118F		
Time Circulation Stopped	3.5 HOURS		
Time Logger on Bottom	9:00 P.M.		
Maximum Recorded Temperature	118F		
Equipment Number	922339		
Location	HAYS, KANSAS		
Recorded By	JEFF LUEBBERS		
Witnessed By	AARON YOUNG		

<<< Fold Here >>>

All interpretations are opinions based on inferences from electrical or other measurements and we cannot and do not guarantee the accuracy or correctness of any interpretation, and we shall not, except in the case of gross or willful negligence on our part, be liable or responsible for any loss, costs, damages, or expenses incurred or sustained by anyone resulting from any interpretation made by any of our officers, agents or employees. These interpretations are also subject to our general terms and conditions set out in our current Price Schedule.

15-151-22596-0000 Comments

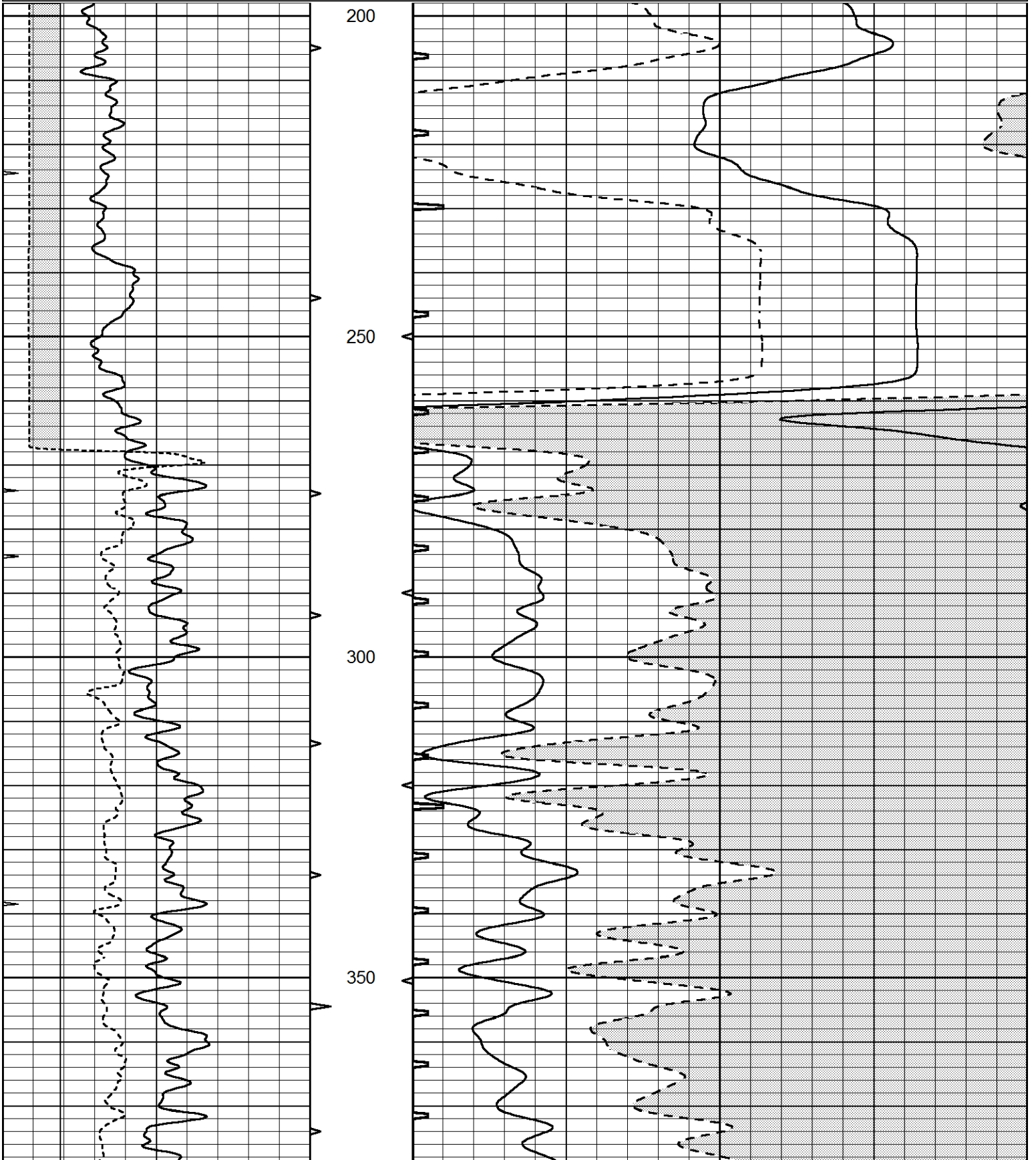
THANK YOU FOR USING ELI WIRELINE HAYS. KANSAS (785) 628-6395
DIRECTIONS
STAFFORD, KS., 9S. ON BLKTOP TO "SE 90TH ST.", 4 1/2E. TO "NE 120TH AVE.", 1/2 S., W. INTO

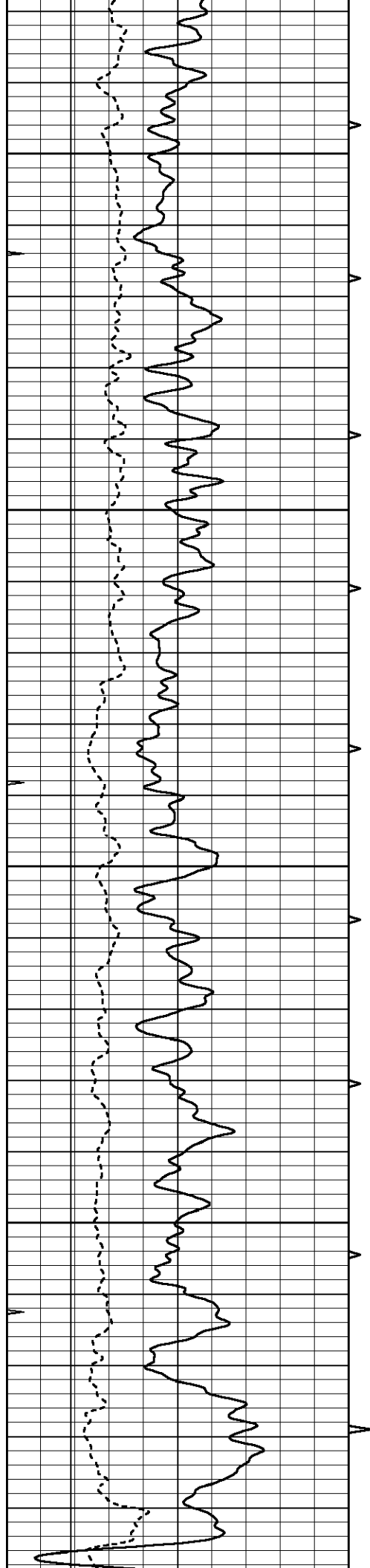


MAIN SECTION

Database File 8738pe.db
 Dataset Pathname pass6.2S
 Presentation Format slt
 Dataset Creation Fri Aug 23 23:44:30 2024
 Charted by Depth in Feet scaled 1:240

0	GAMMA RAY (GAPI)	150	ABHV	140	DELTA TIME (usec/ft)	40	
6	CALIPER (in)	16	10 (ft3)	0	30	SONIC POROSITY (pu)	-10
0	MINMK	20	TBHV	0	ITT (msec)	20	
			0 (ft3)	10			



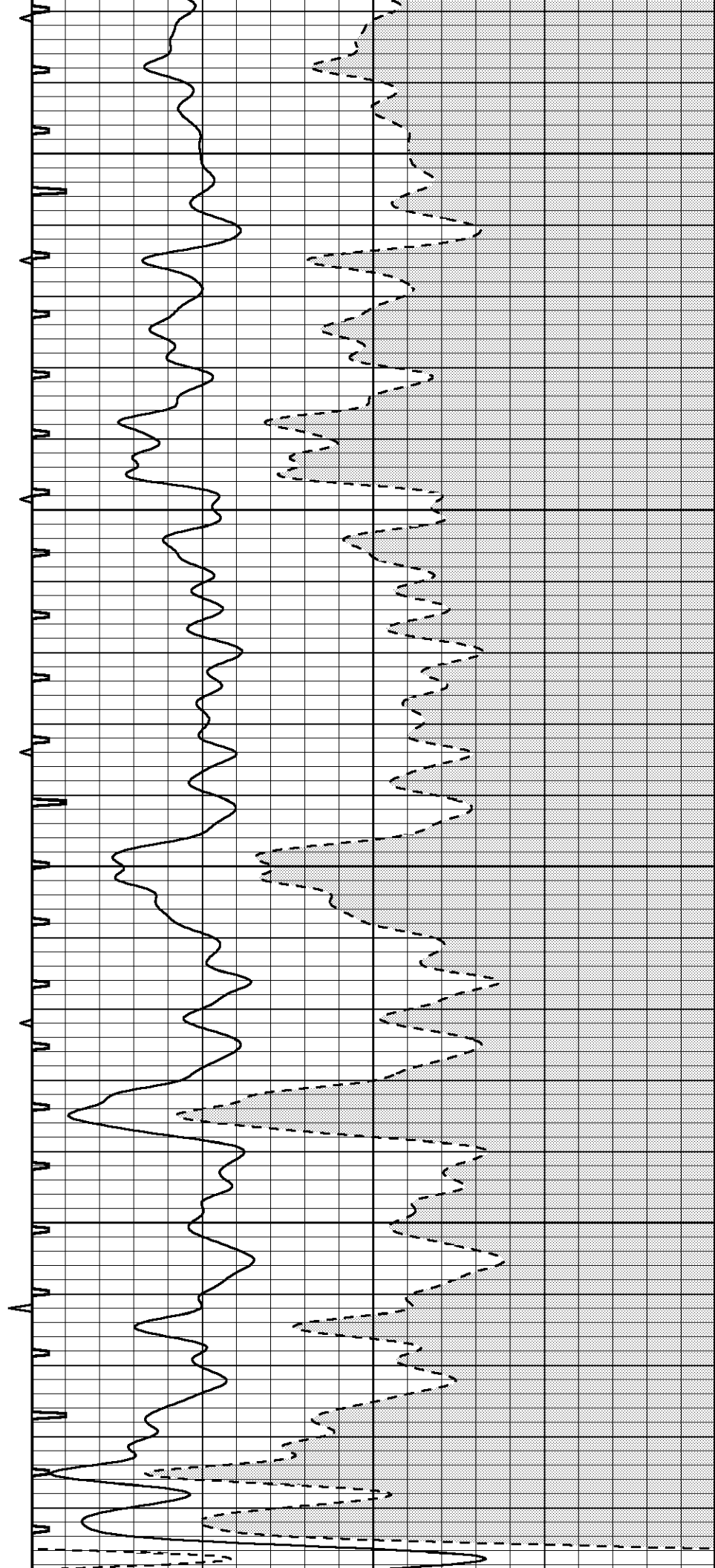


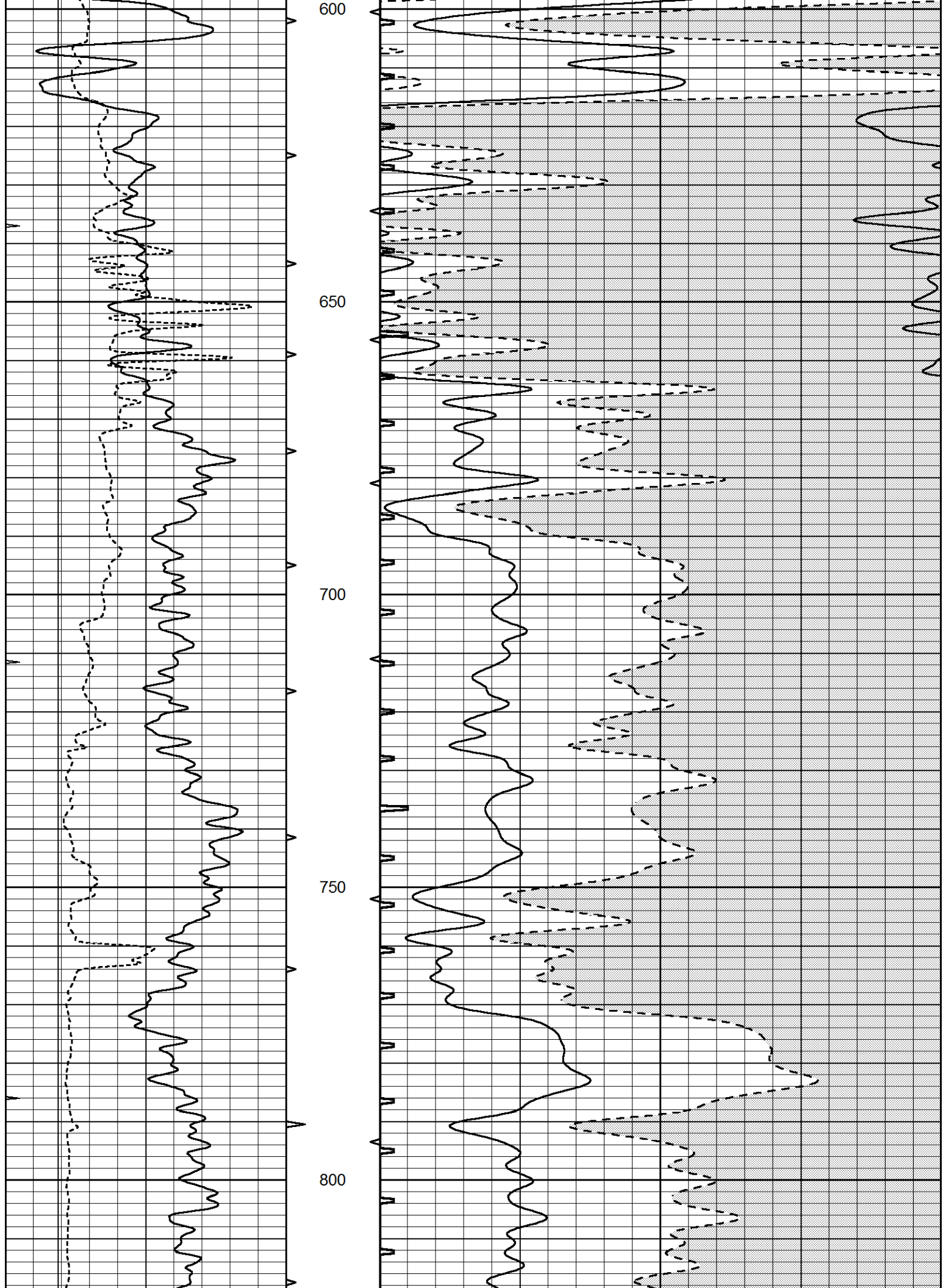
400

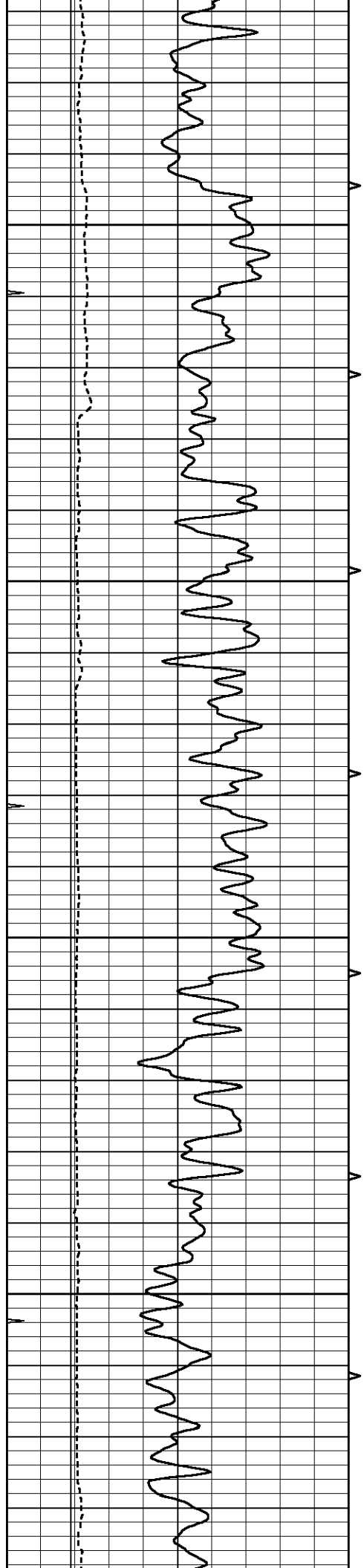
450

500

550





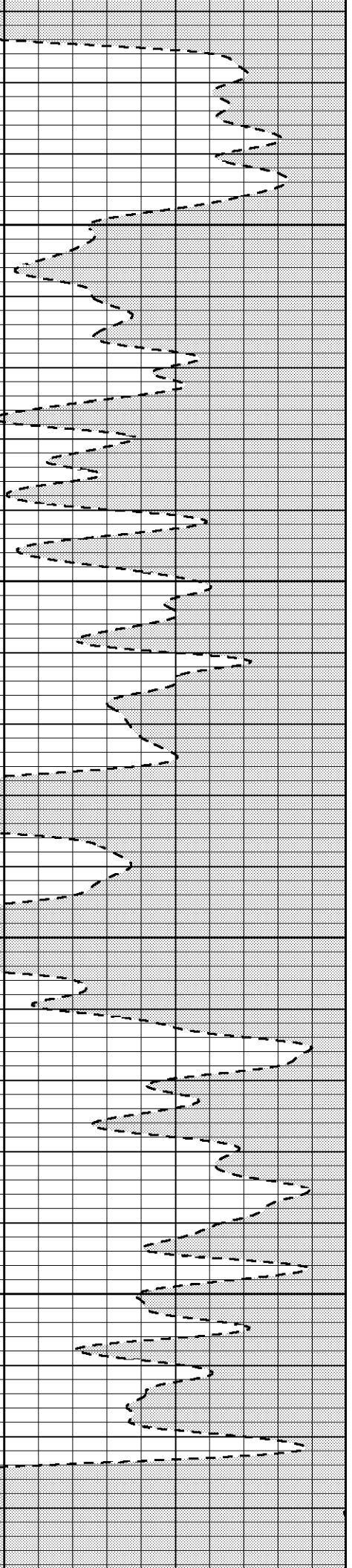
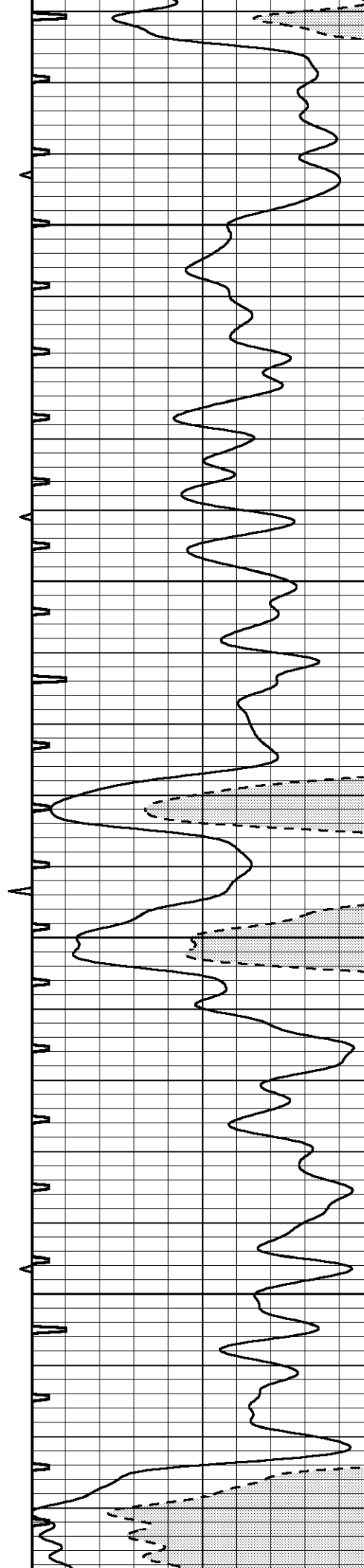


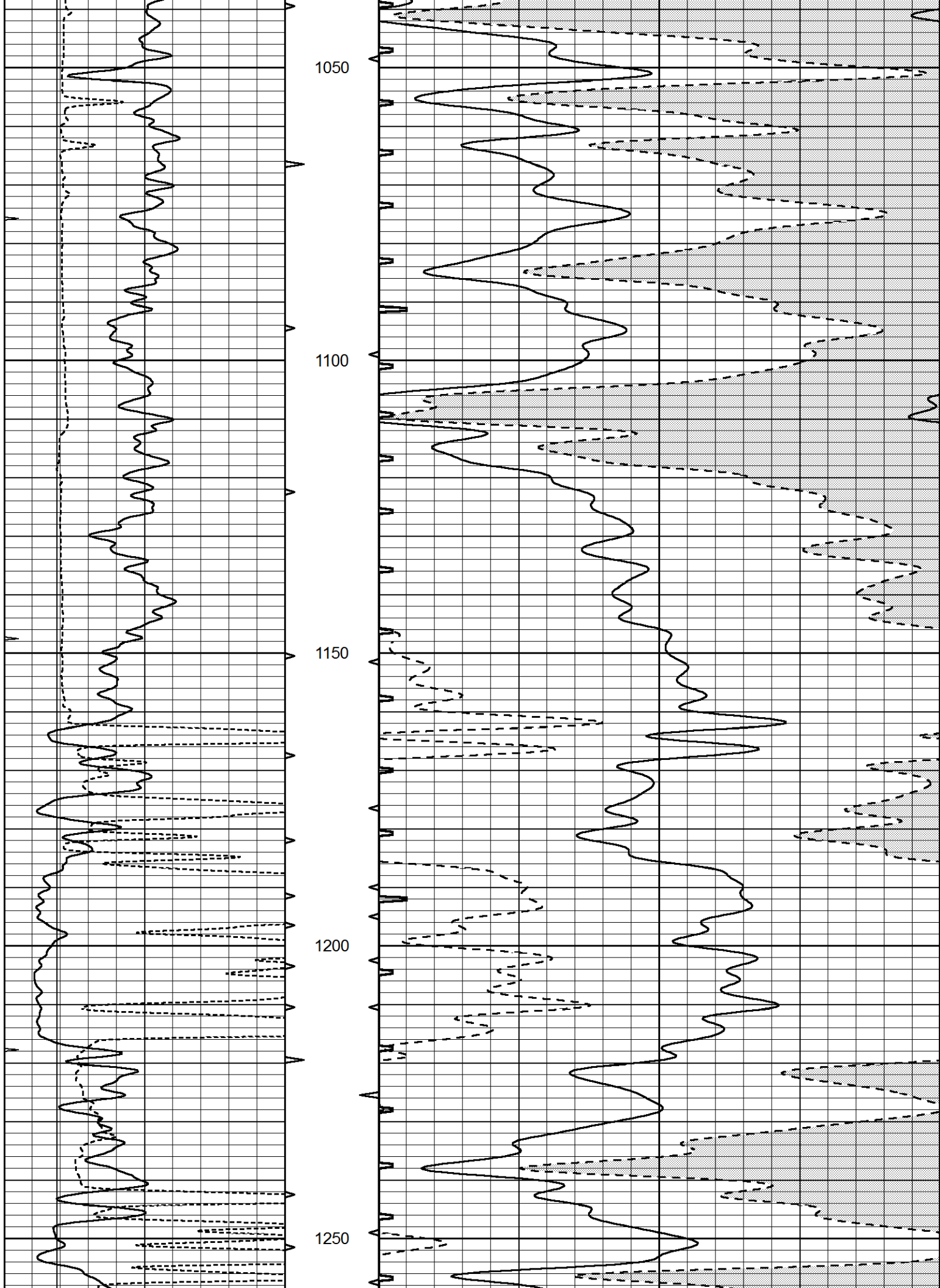
850

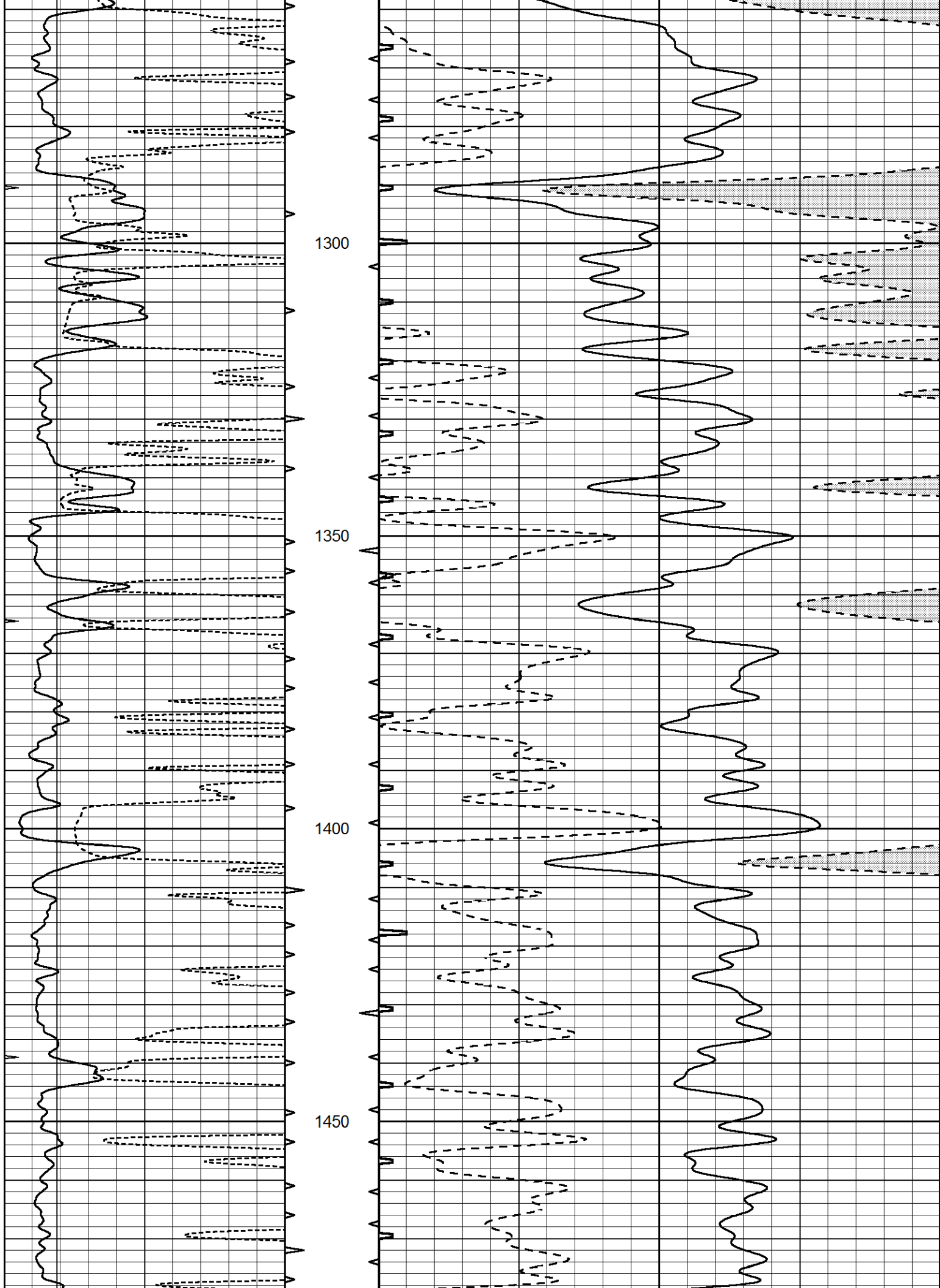
900

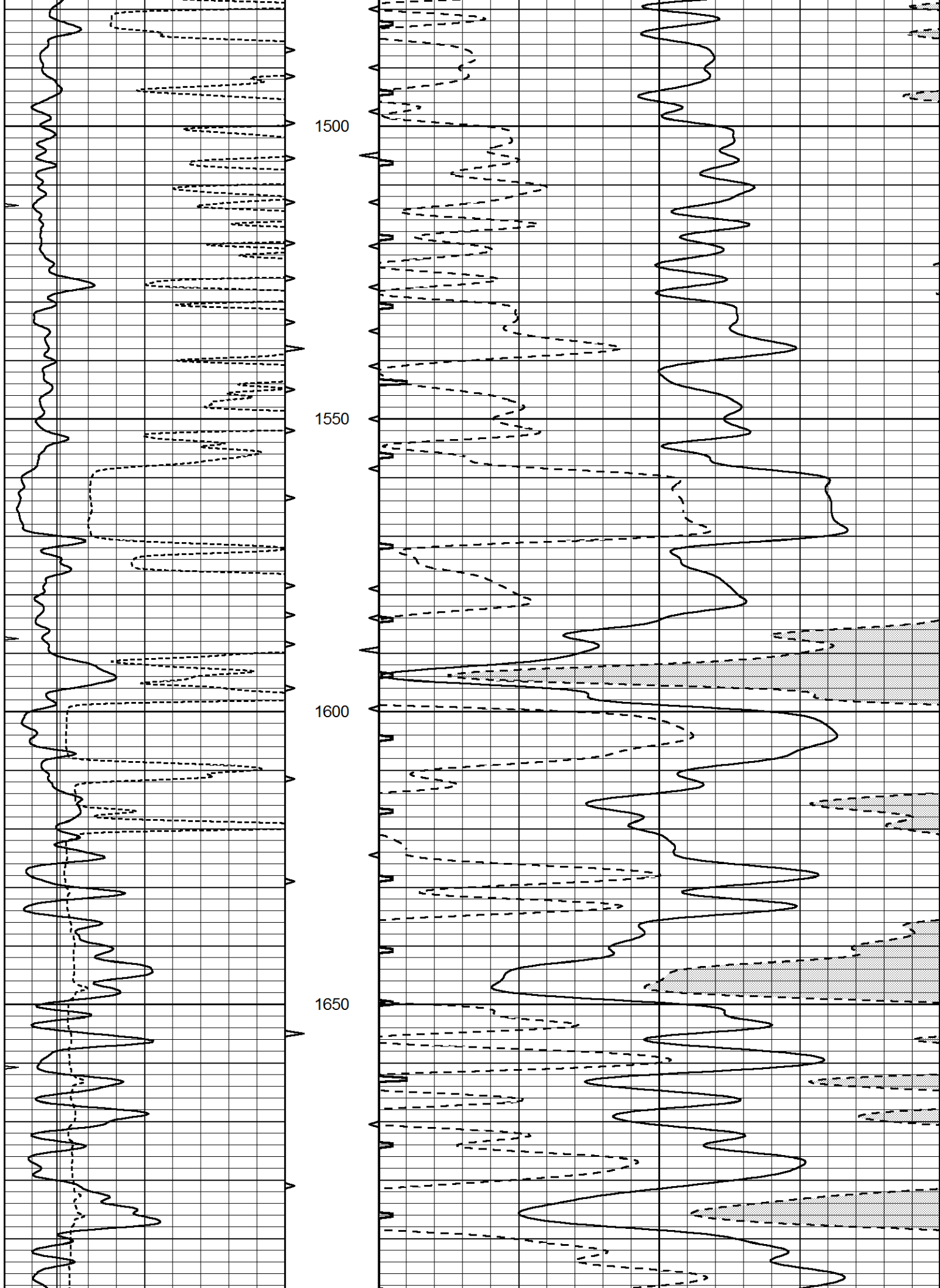
950

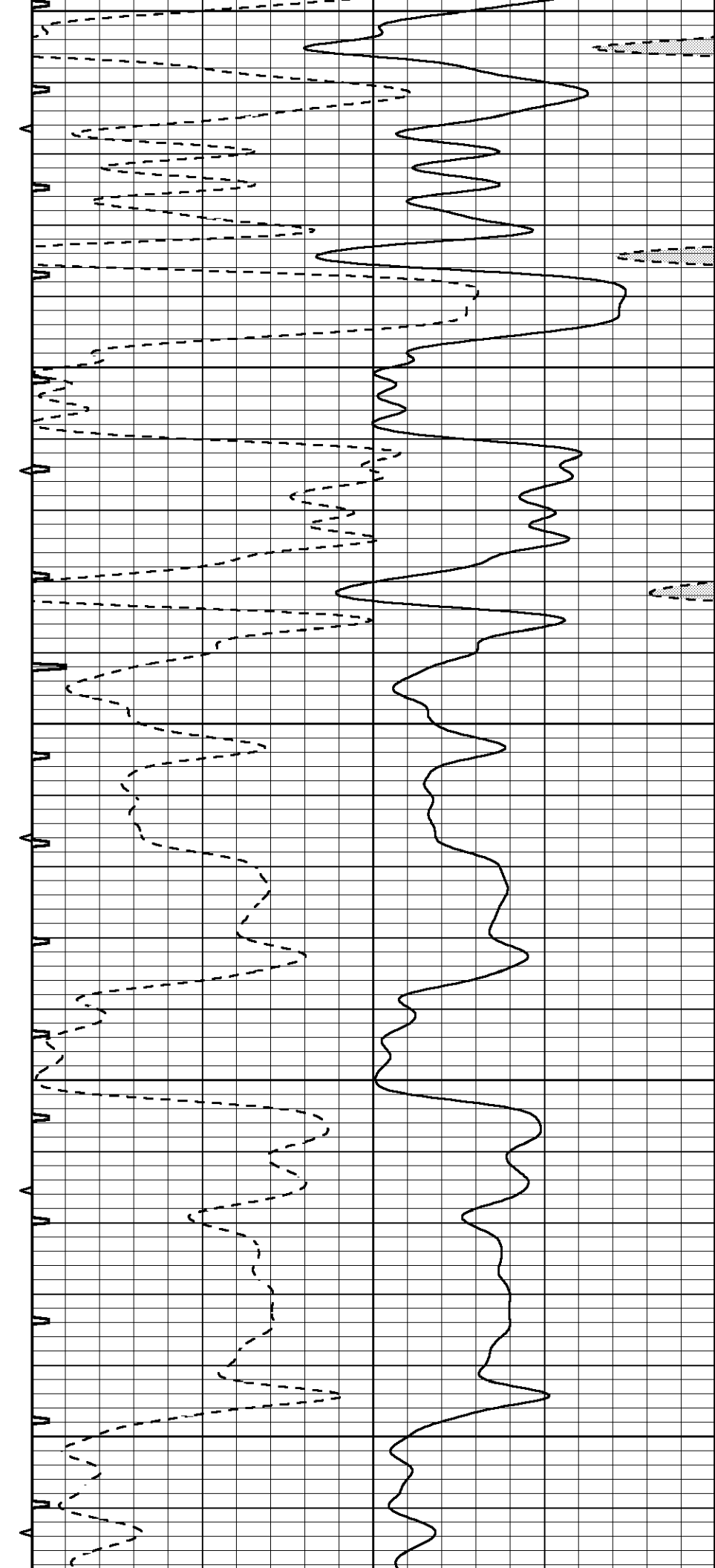
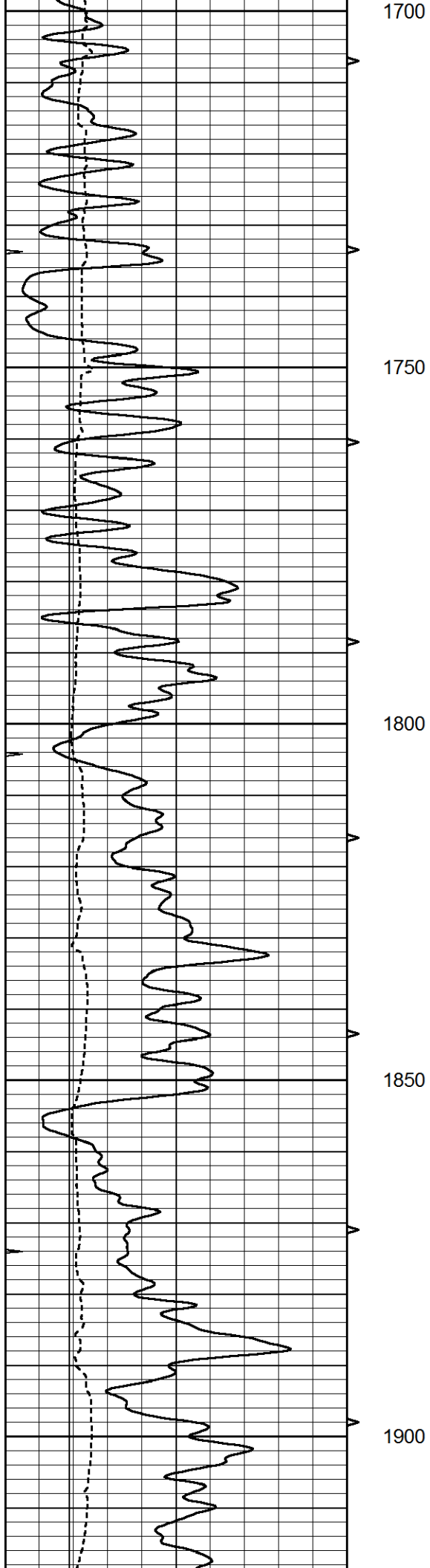
1000

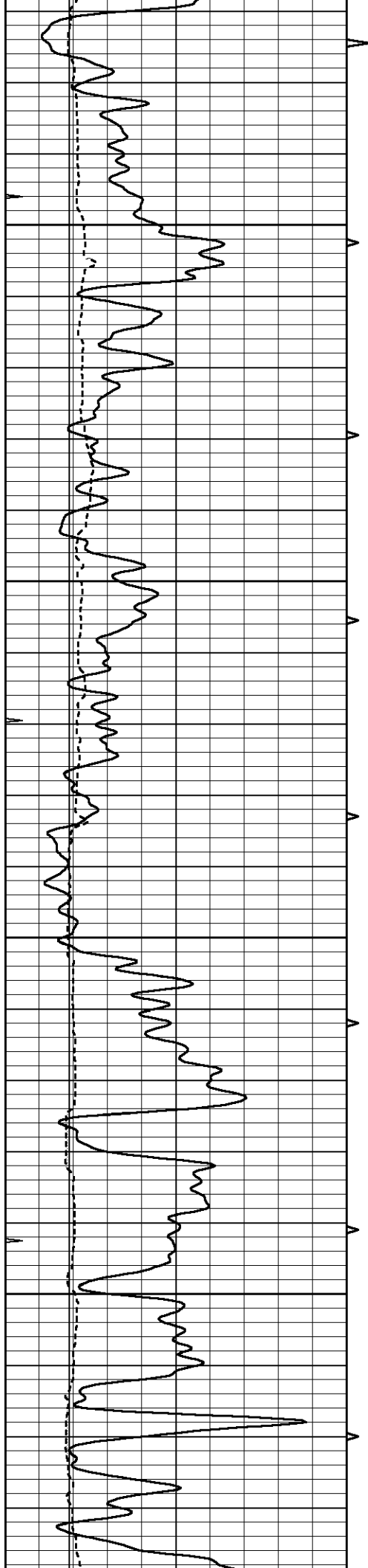










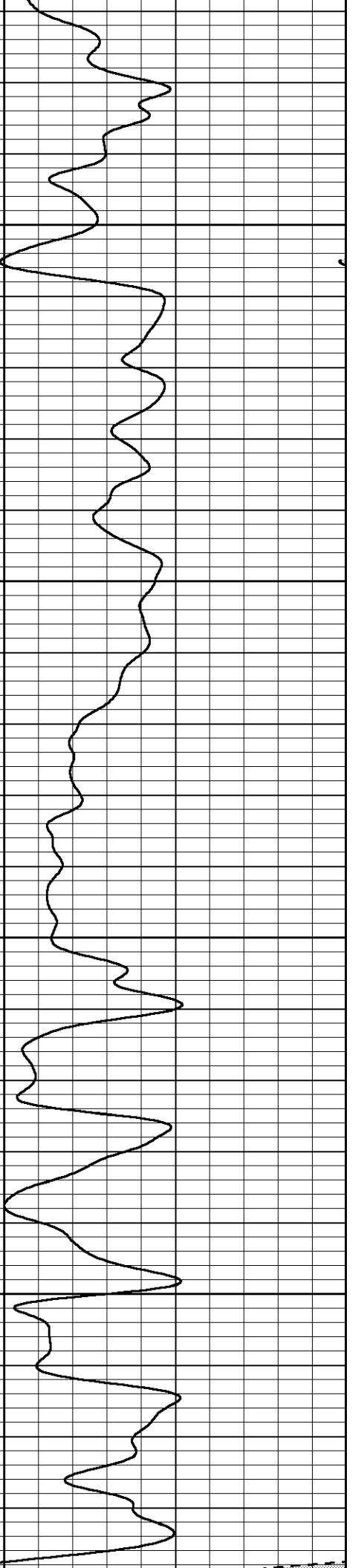
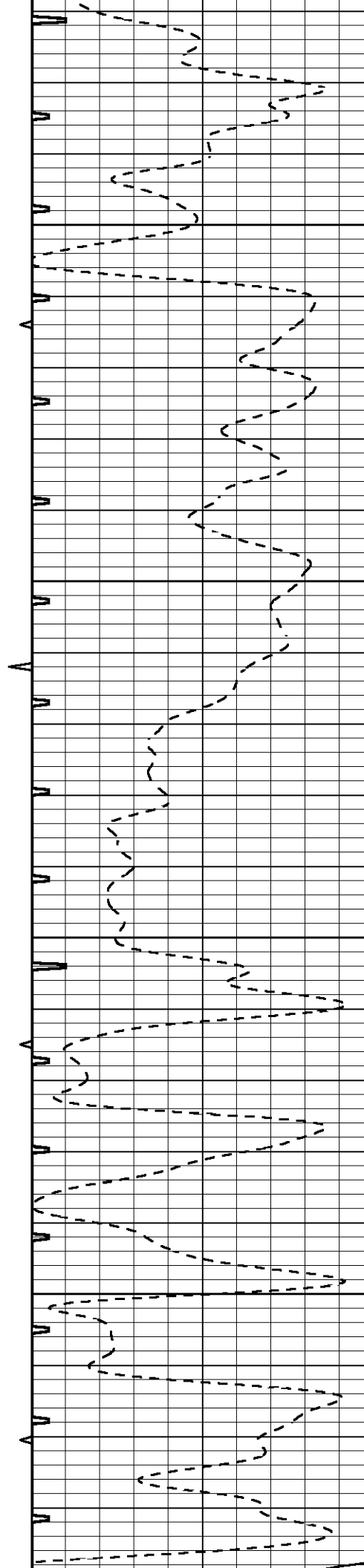


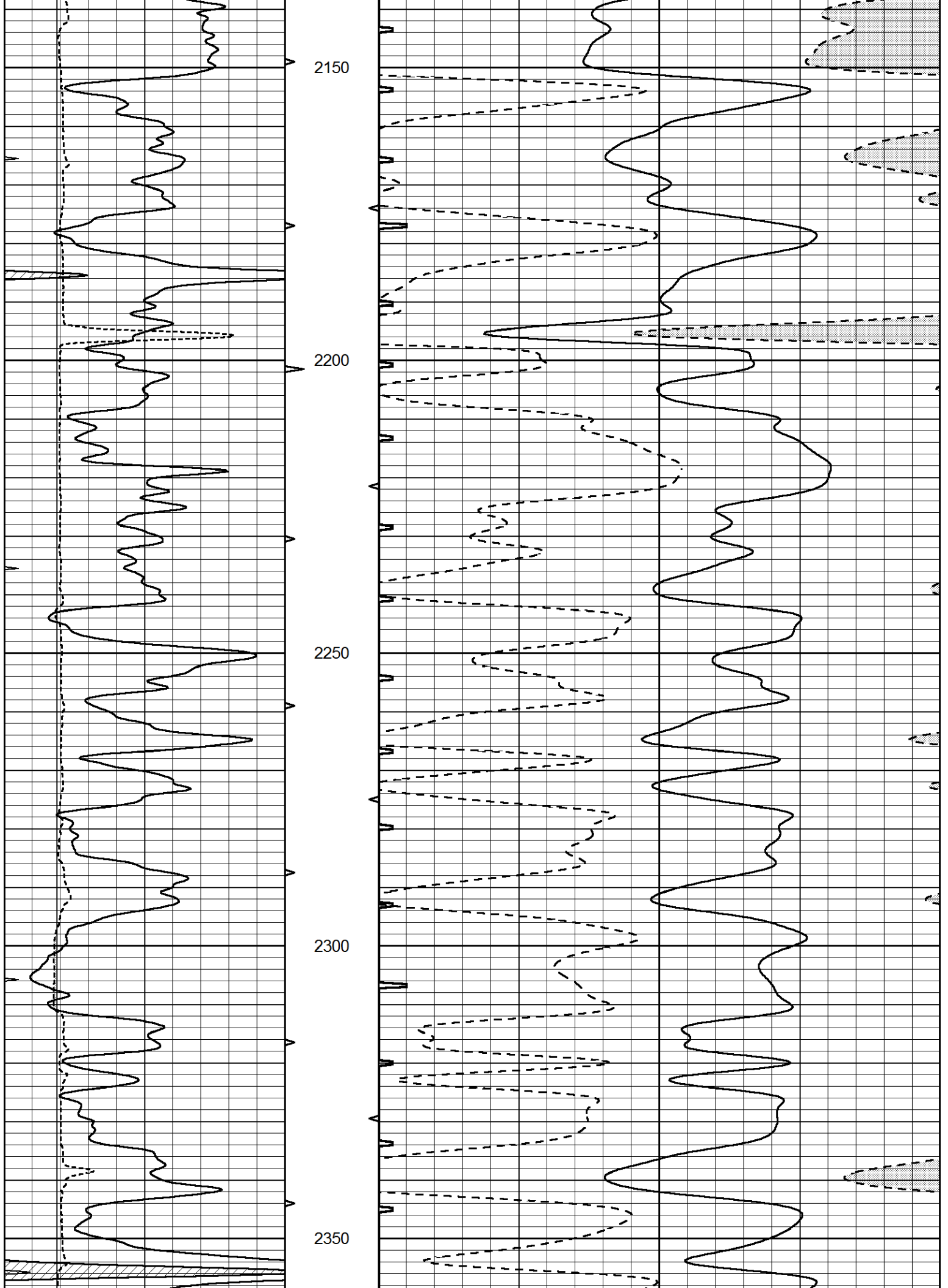
1950

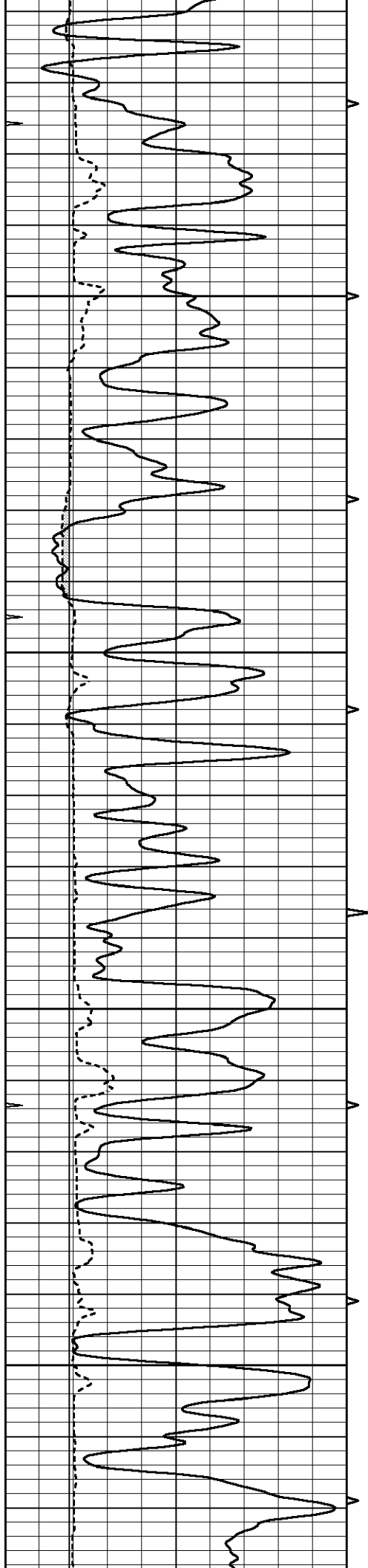
2000

2050

2100





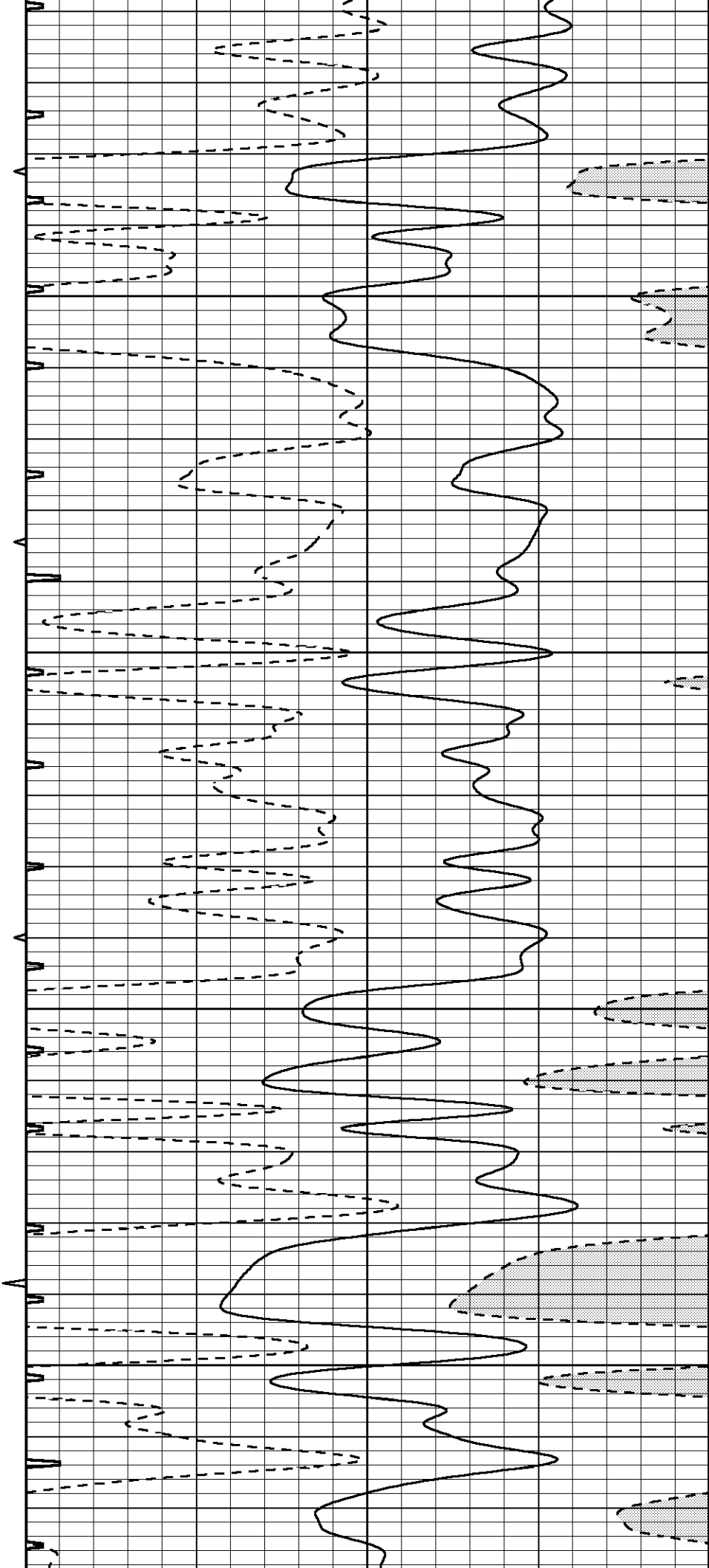


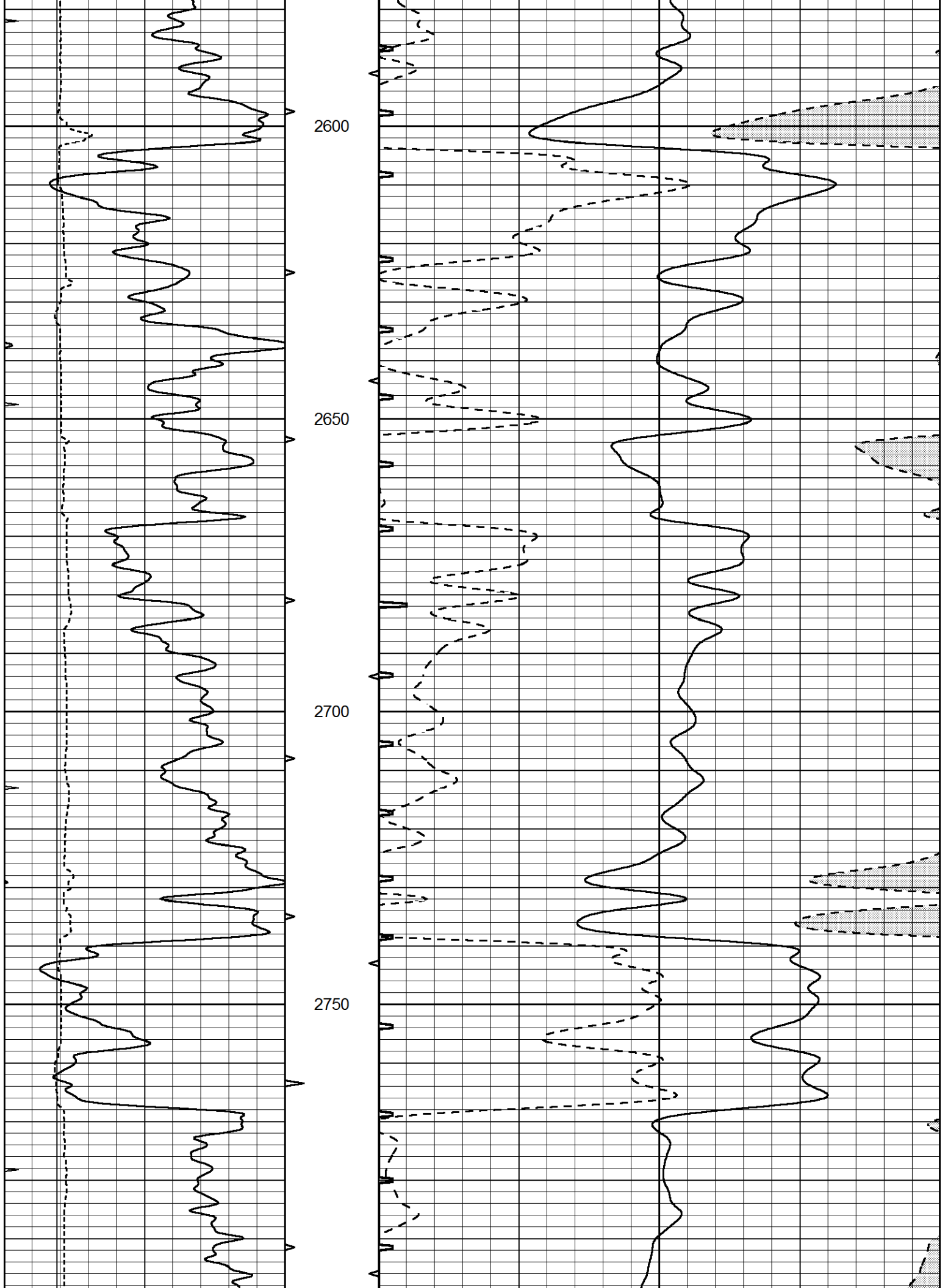
2400

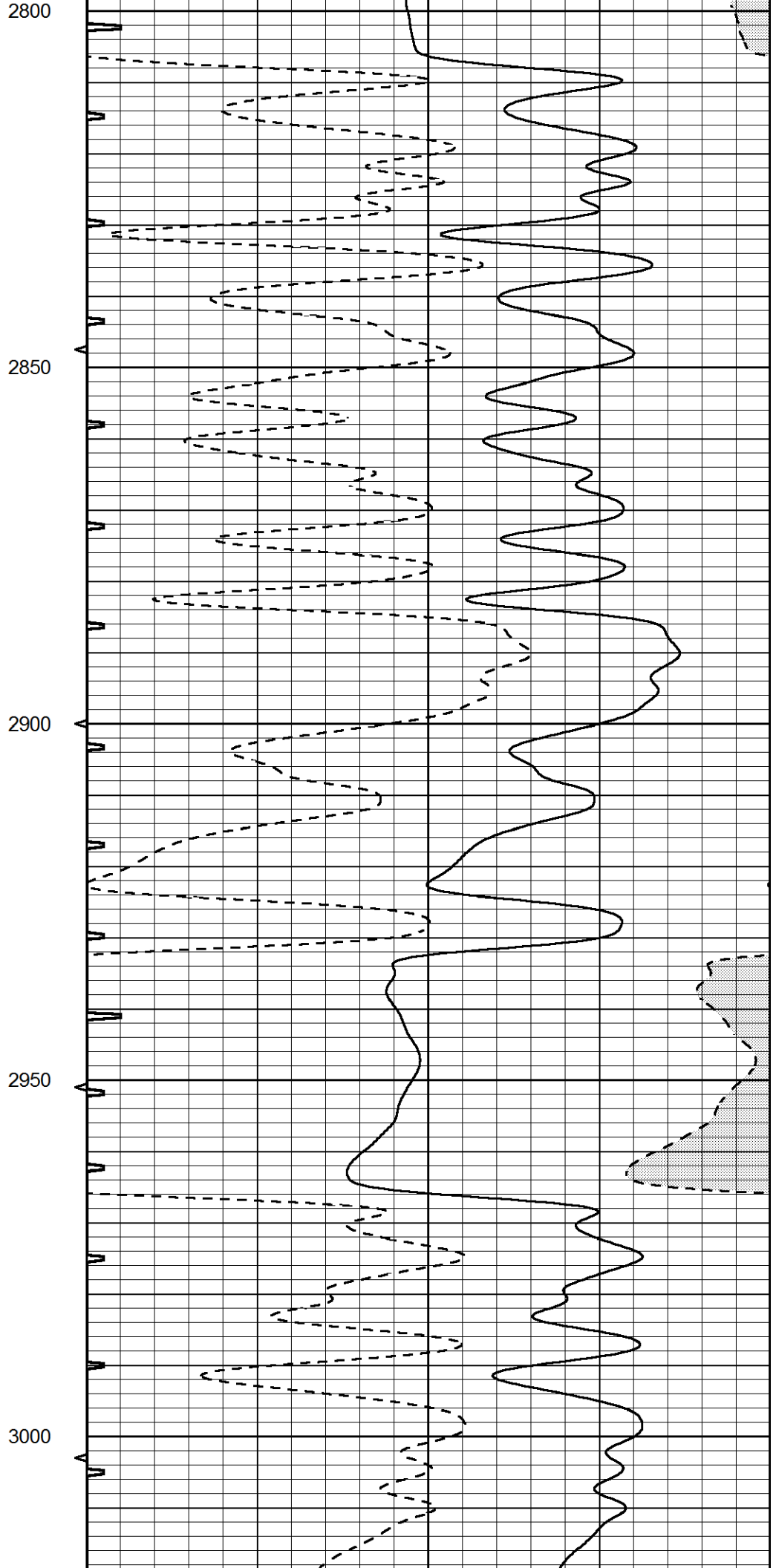
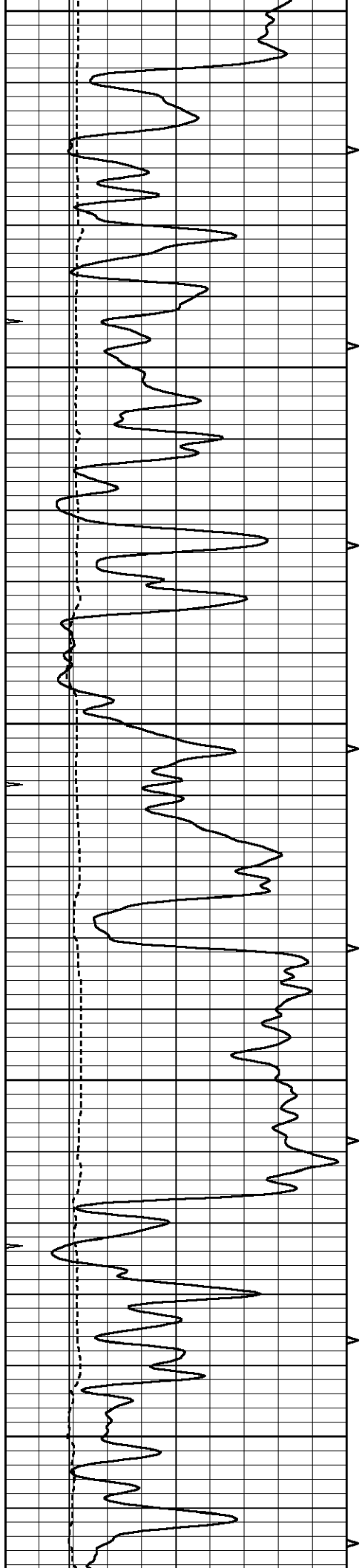
2450

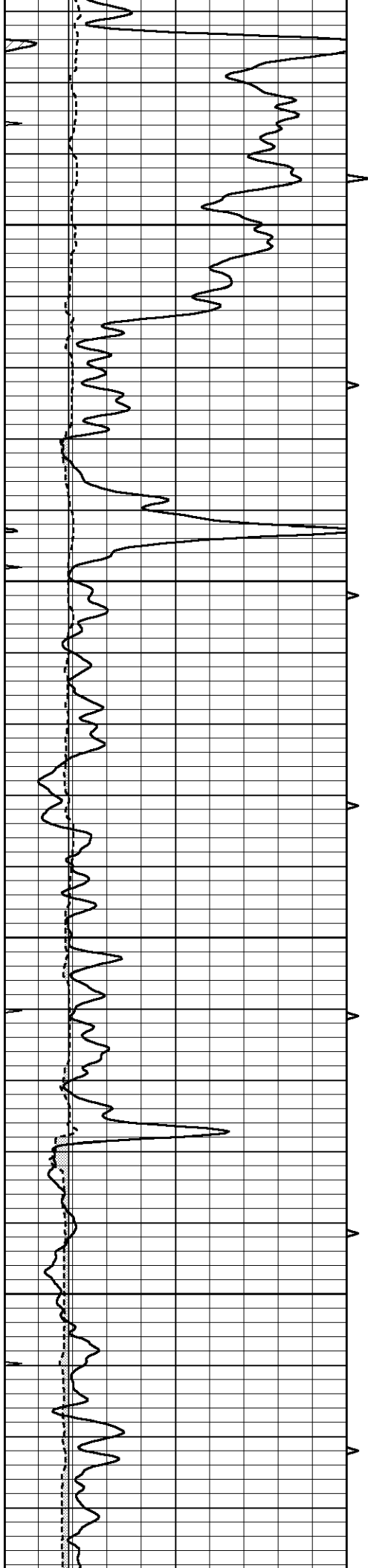
2500

2550







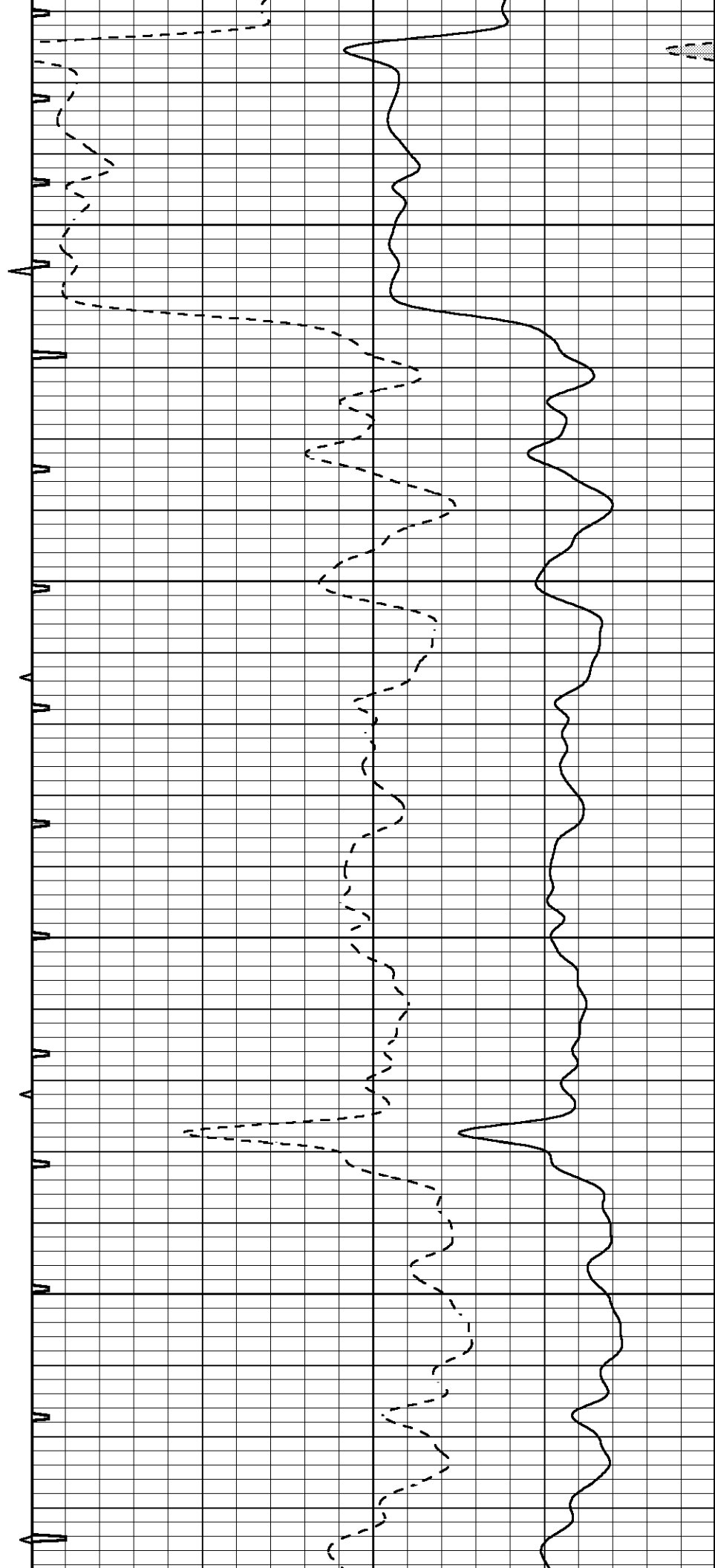


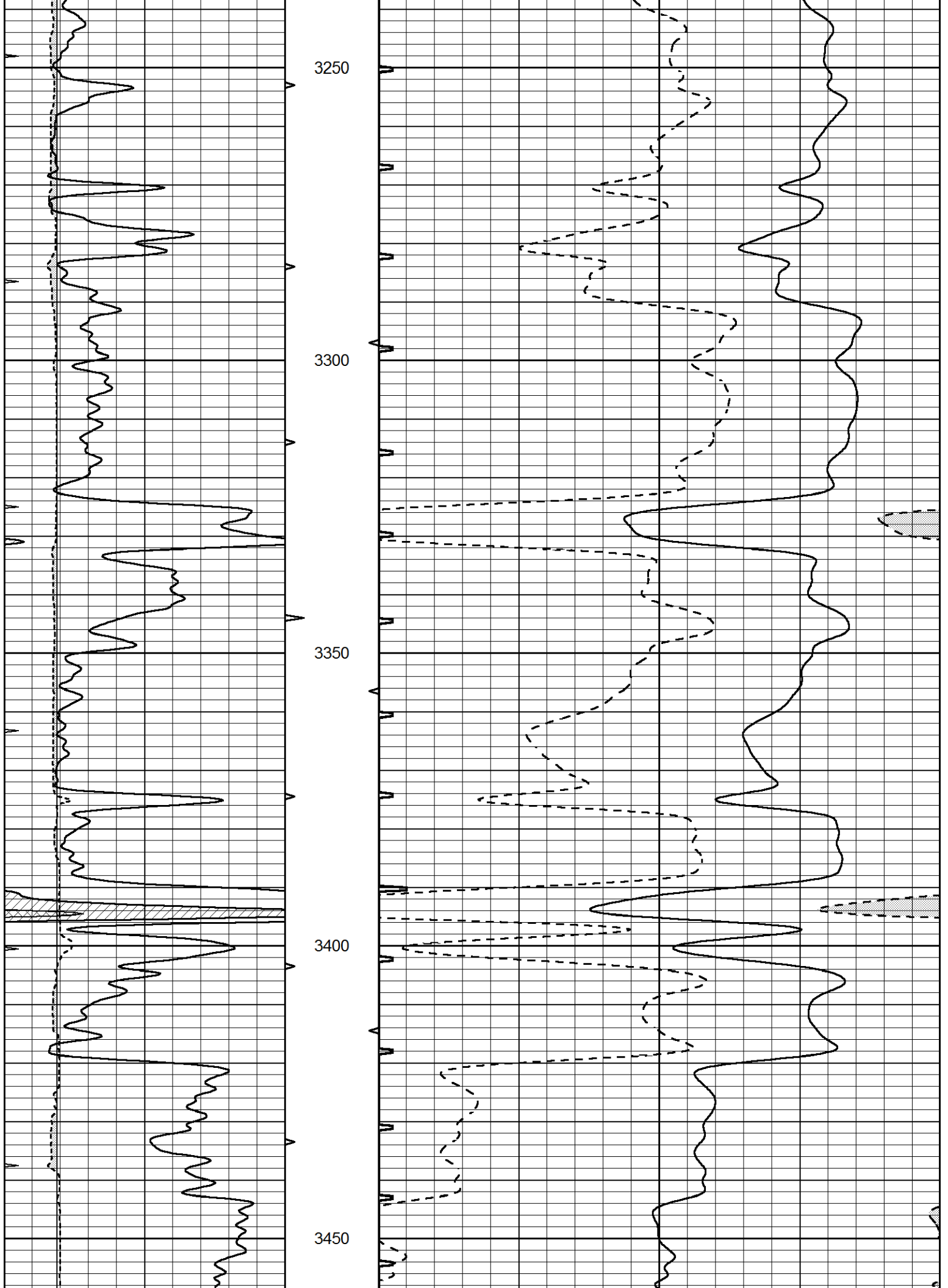
3050

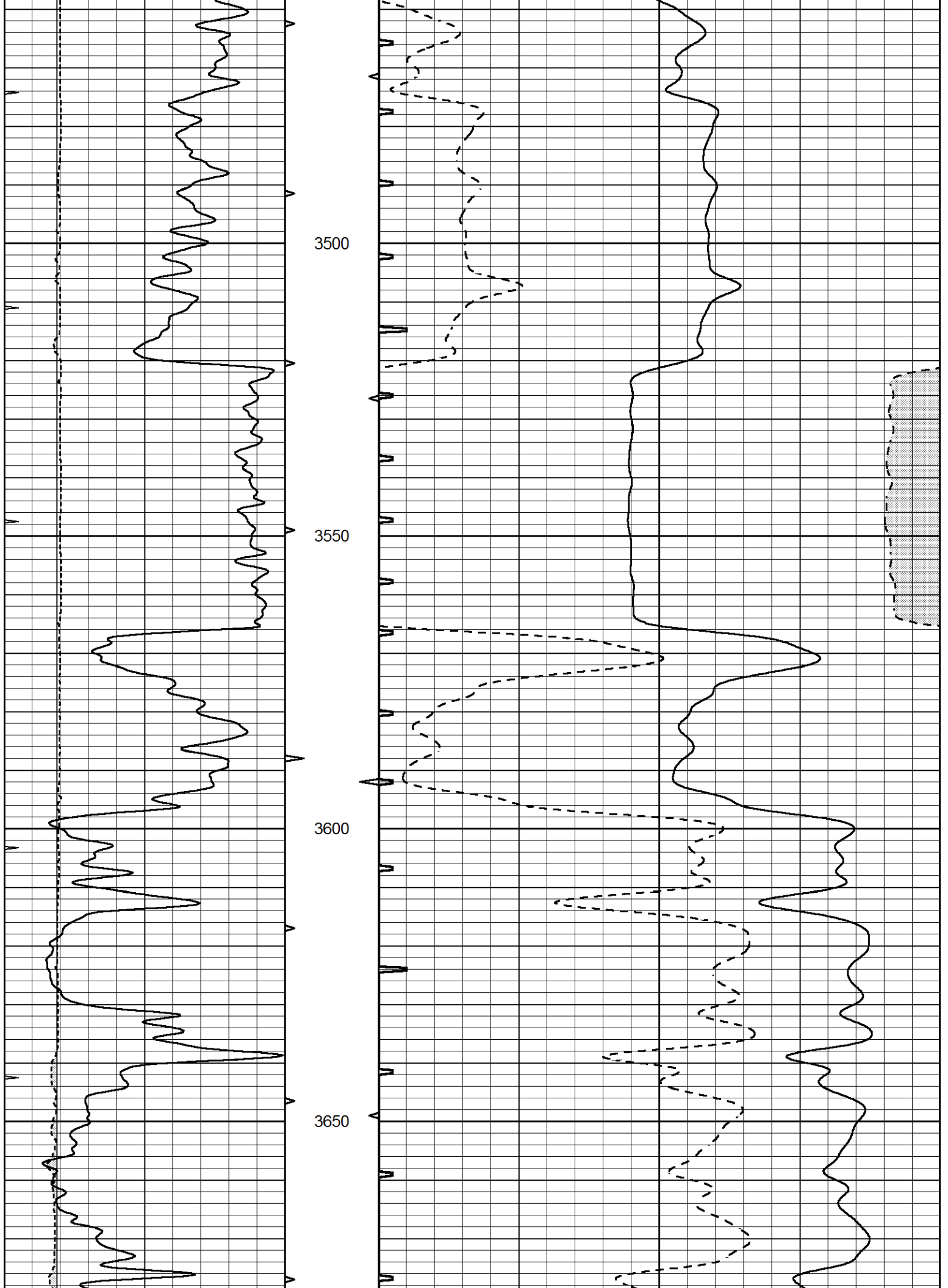
3100

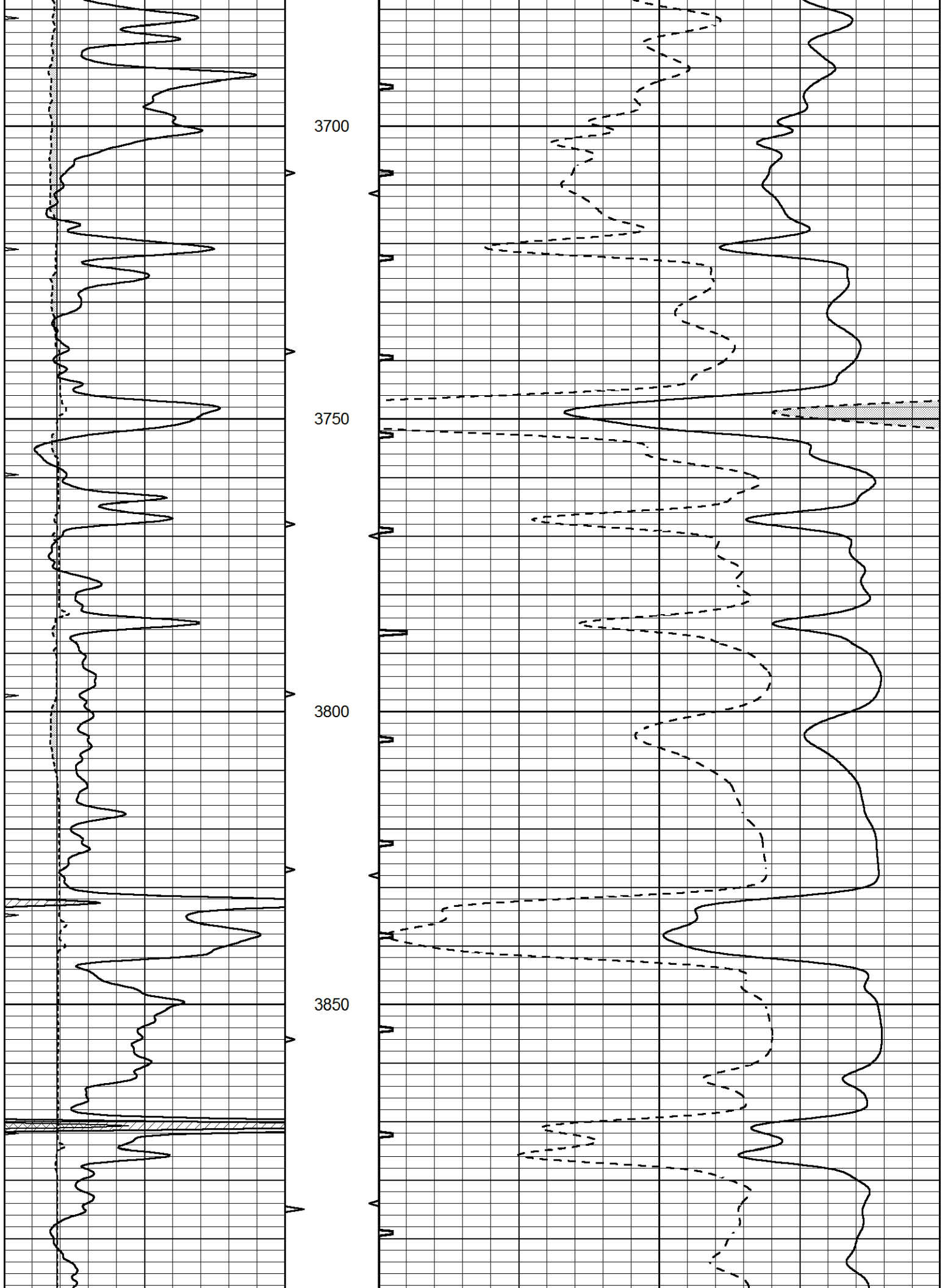
3150

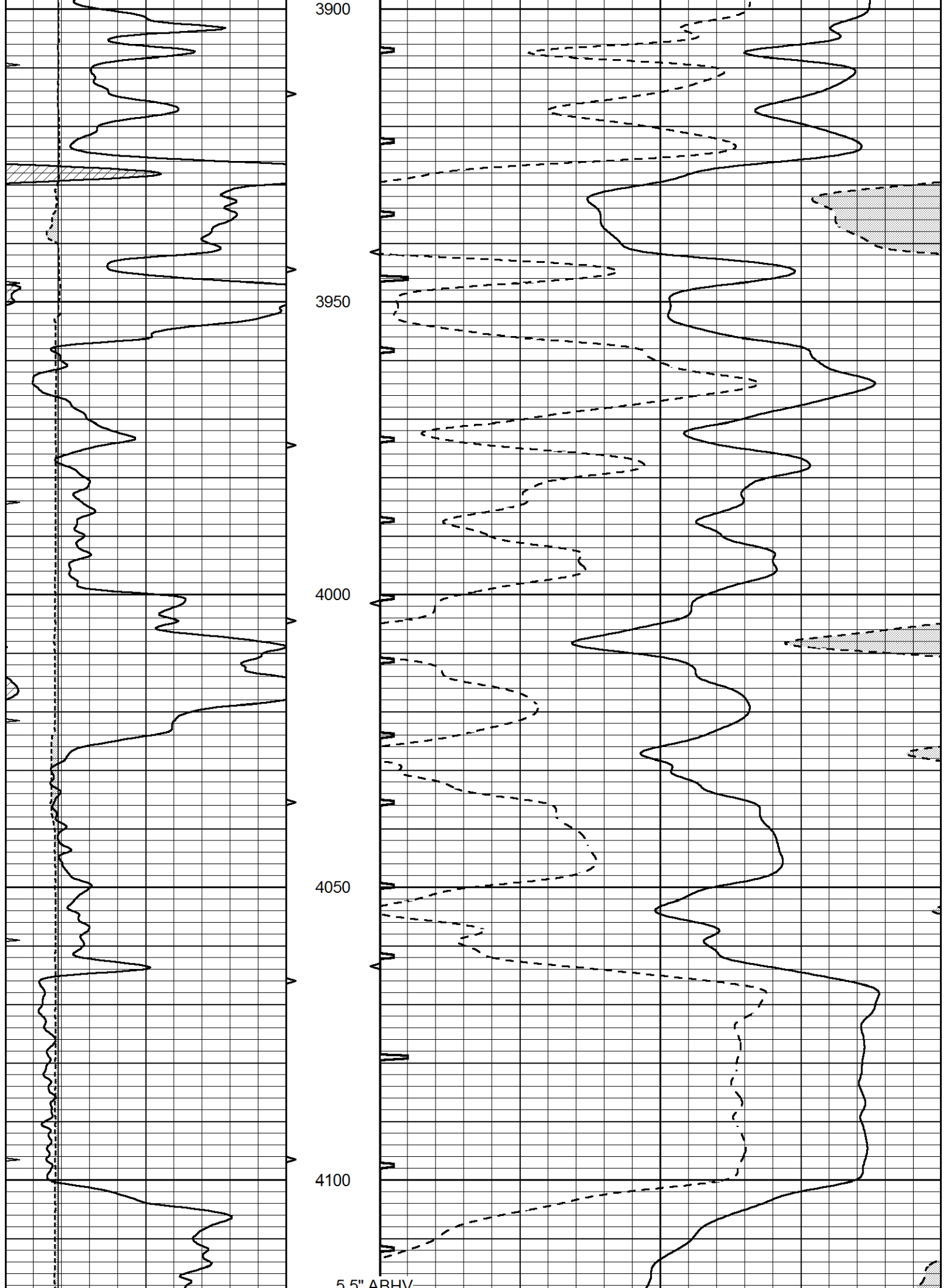
3200











3900

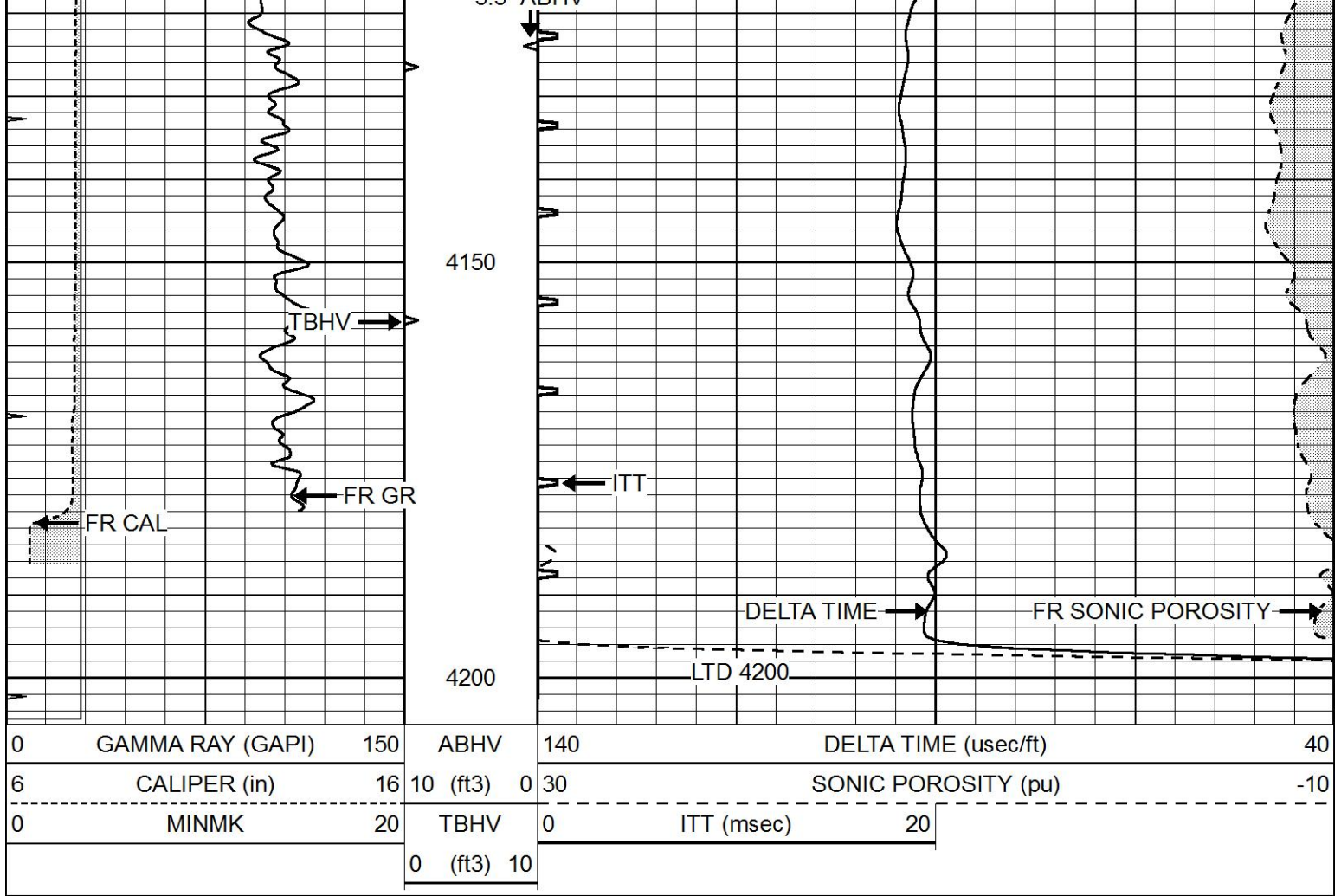
3950

4000

4050

4100

5.5" ABHV



REPEAT SECTION

Database File 8738pe.db
 Dataset Pathname pass5.3
 Presentation Format slt
 Dataset Creation Fri Aug 23 23:54:11 2024
 Charted by Depth in Feet scaled 1:240

0	GAMMA RAY (GAPI)	150	ABHV	140	DELTA TIME (usec/ft)	40
6	CALIPER (in)	16	10 (ft3)	0 30	SONIC POROSITY (pu)	-10
0	MINMK	20	TBHV	0	ITT (msec)	20
			0 (ft3)	10		

