



MIDWEST SURVEYS
 LOGGING - PERFORATING - CONSULTING SERVICES
 P.O. Box 68, Osawatomie, KS 66064
 913 / 755 - 2128

GAMMA RAY / NEUTRON / CCL

File No. Company **Colt Energy, Inc.**
 Well **Johnson D No.- 27**

Field **Iola**
 County **Allen** State **Kansas**

Location **1444 FSL & 774 FWL**
SW-SE-NW-SW

Sec. **11** Twp. **24S** Rge. **18E**
 Permian Datum **GL** Elevation **975**
 Log Measured From **GL** K.B. NA
 Drilling Measured From **GL** D.F. NA
 G.L. **975**

Date **13-12-2022**
 Run Number **One**
 Depth Driller **988.0**

Depth Logger **971.2**
 Bottom Logged Interval **970.2**
 Top Log Interval **20.0**

Type Fluid **Water**
 Density / Viscosity **NA**
 Salinity - PPM Cl **NA**
 Max Recorded Temp **NA**

Estimated Cement Top **0.0**
 Location **107 Osawatomie**
 Recorded by **Steve Winkfish**

Witnessed By **Wes Woods**

BORE-HOLE RECORD
 RUN No. BIT FROM TO SIZE
 One 12.25" 0.0 20.0 8.625"
 Two 6.75" 20.0 988.0 4.50"

CASING RECORD
 FROM TO TO
 0.0 20.0 20.0
 20.0 988.0 988.0
 988.0 974.0 974.0

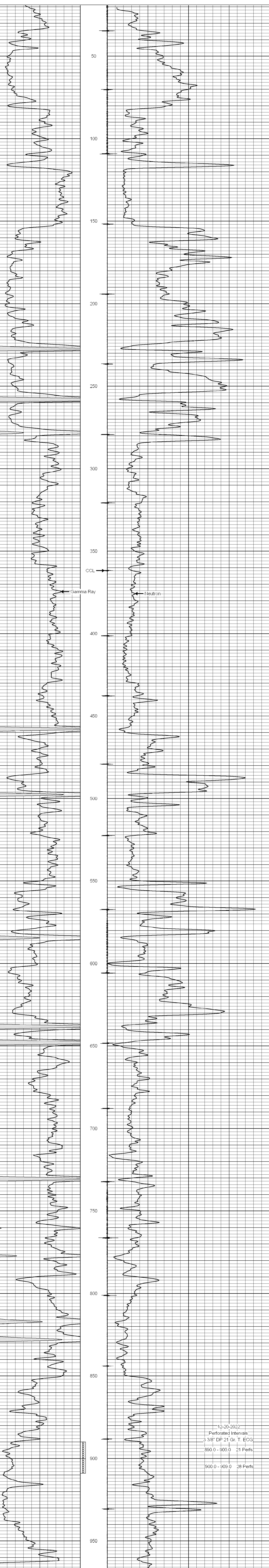
<<< Fold Here >>>

All interpretations are opinions based on inferences from electrical or other measurements and we cannot and do not guarantee the accuracy or correctness of any interpretation, and we shall not, except in the case of gross or willful negligence on our part, be liable or responsible for any loss, costs, damages, or expenses incurred or sustained by anyone resulting from any interpretation made by any of our officers, agents or employees. These interpretations are also subject to our general terms and conditions set out in our current Price Schedule.

Comments

Drilling Contractor :
 Colt Energy, Inc.

Database File: johnson d 27.db
 Dataset Pathname: pass1
 Presentation Format: gr-n-ccl
 Dataset Creation: Tue Dec 20 09:43:56 2022
 Charted by: Depth in Feet scaled 1:240



12-20-2022
 Perforated Intervals
 3 3/8" DP 21 Gr. T. ECG
 880.0 - 900.0 21 Perfs
 900.0 - 909.0 28 Perfs