



SONIC LOG

Company SATCHELL CREEK PETROLEUM, LLC  
 Well CATHEDRAL #A-3  
 Field CATHARINE EAST  
 County ELLIS  
 State KANSAS

Company SATCHELL CREEK PETROLEUM, LLC  
 Well CATHEDRAL #A-3  
 Field CATHARINE EAST  
 County ELLIS State KANSAS

Location: API #: 15-051-27053-0000  
 330' FNL & 915' FEL  
 E2 - NW - NE - NE  
 SEC 11 TWP 13S RGE 17W  
 Permanent Datum GROUND LEVEL Elevation 2033  
 Log Measured From KELLY BUSHING 6' A.G.L  
 Drilling Measured From KELLY BUSHING  
 Other Services CDL/CNL/PE DIL/MEL  
 Elevation K.B. 2039 D.F. 2037 G.L. 2033

Date	9/28/22
Run Number	TWO
Depth Driller	3655
Depth Logger	3655
Bottom Logged Interval	3647
Top Log Interval	200
Casing Driller	8 5/8" @ 210
Casing Logger	226
Bit Size	7 7/8
Type Fluid in Hole	CHEMICAL MUD
Density / Viscosity	9.0/64
PH / Fluid Loss	9.0/10.0
Source of Sample	FLOWLINE
Rm @ Meas. Temp	.800 @ 80F
Rmt @ Meas. Temp	.600 @ 80F
Rmc @ Meas. Temp	.960 @ 80F
Source of Rmf / Rmc	MEASUREMENT
Rm @ BHT	.566 @ 113F
Time Circulation Stopped	6 HOURS
Time Logger on Bottom	4:00 A.M.
Maximum Recorded Temperature	113F
Equipment Number	3802
Location	HAYS, KANSAS
Recorded By	COLE ROBBEN
Witnessed By	CHAD COUNTS

<<< Fold Here >>>

All interpretations are opinions based on inferences from electrical or other measurements and we cannot and do not guarantee the accuracy or correctness of any interpretation, and we shall not, except in the case of gross or willful negligence on our part, be liable or responsible for any loss, costs, damages, or expenses incurred or sustained by anyone resulting from any interpretation made by any of our officers, agents or employees. These interpretations are also subject to our general terms and conditions set out in our current Price Schedule.

Comments

THANK YOU FOR USING ELI WIRELINE SERVICES, HAYS, KS. ( 785 ) 628-6395

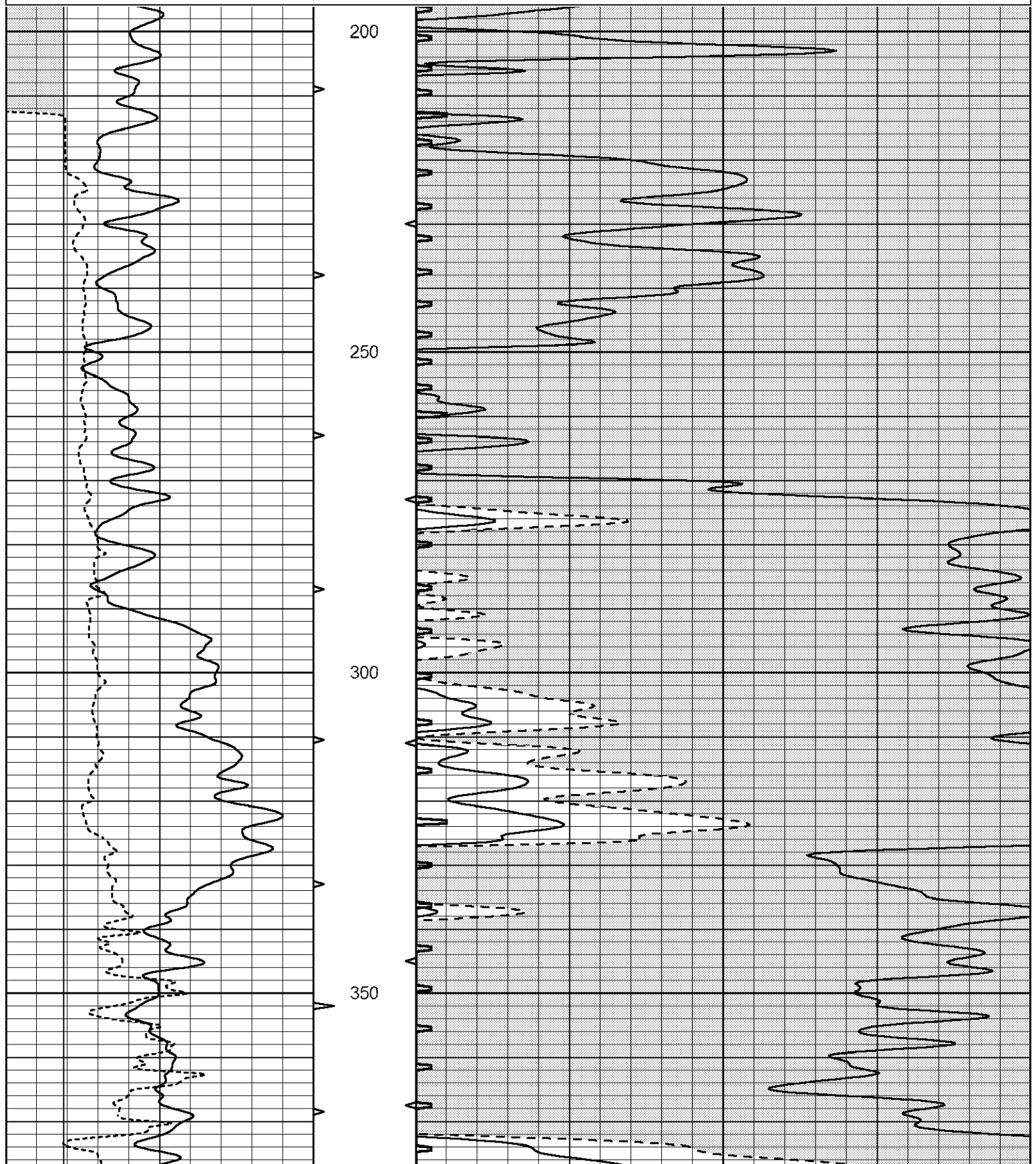
DIRECTIONS:  
 FROM VICTORIA/CATHARINE BLACKTOP INTERSECTION, 1 MILE WEST, 1/2 MILE NORTH,  
 WEST INTO

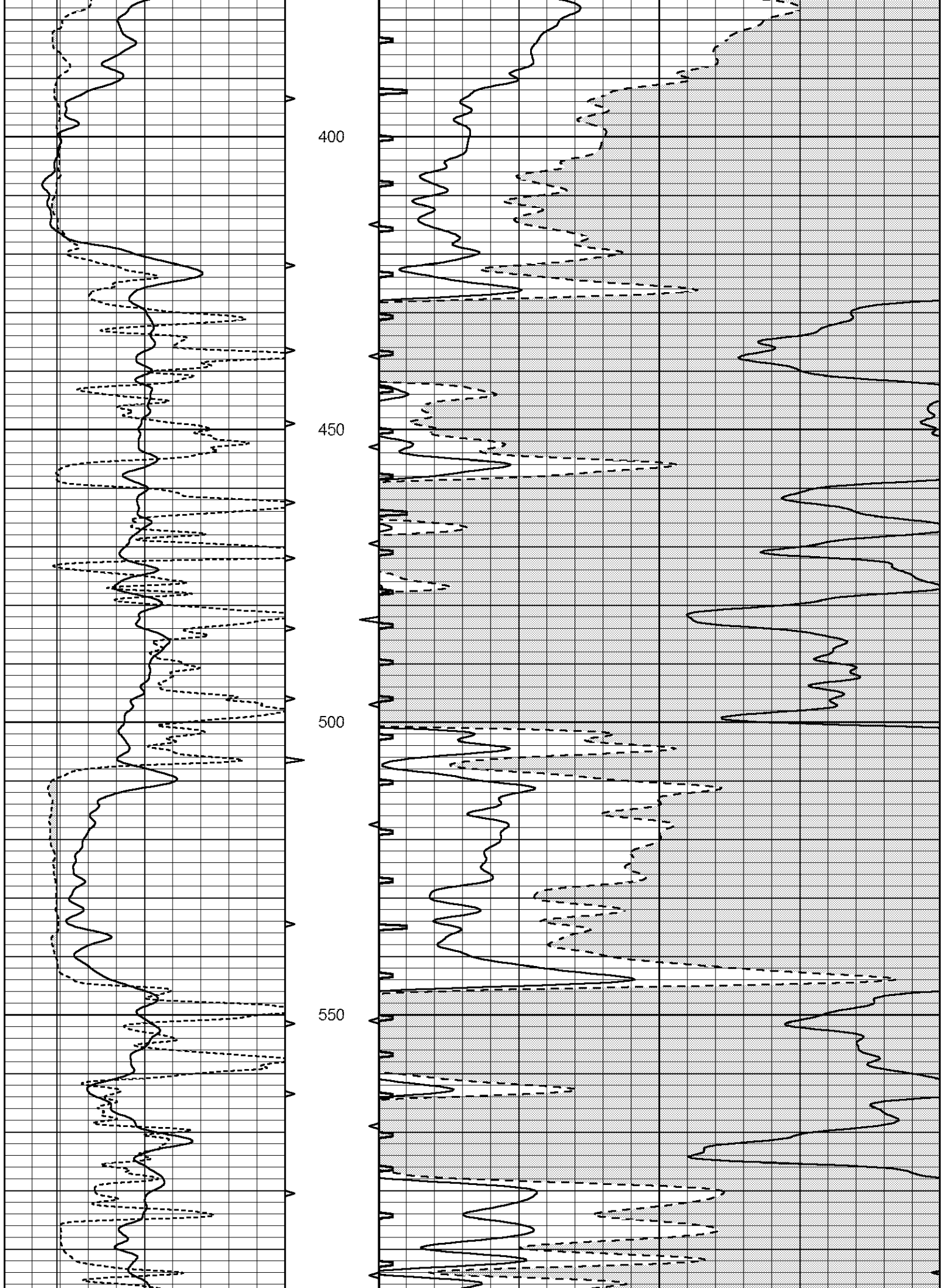


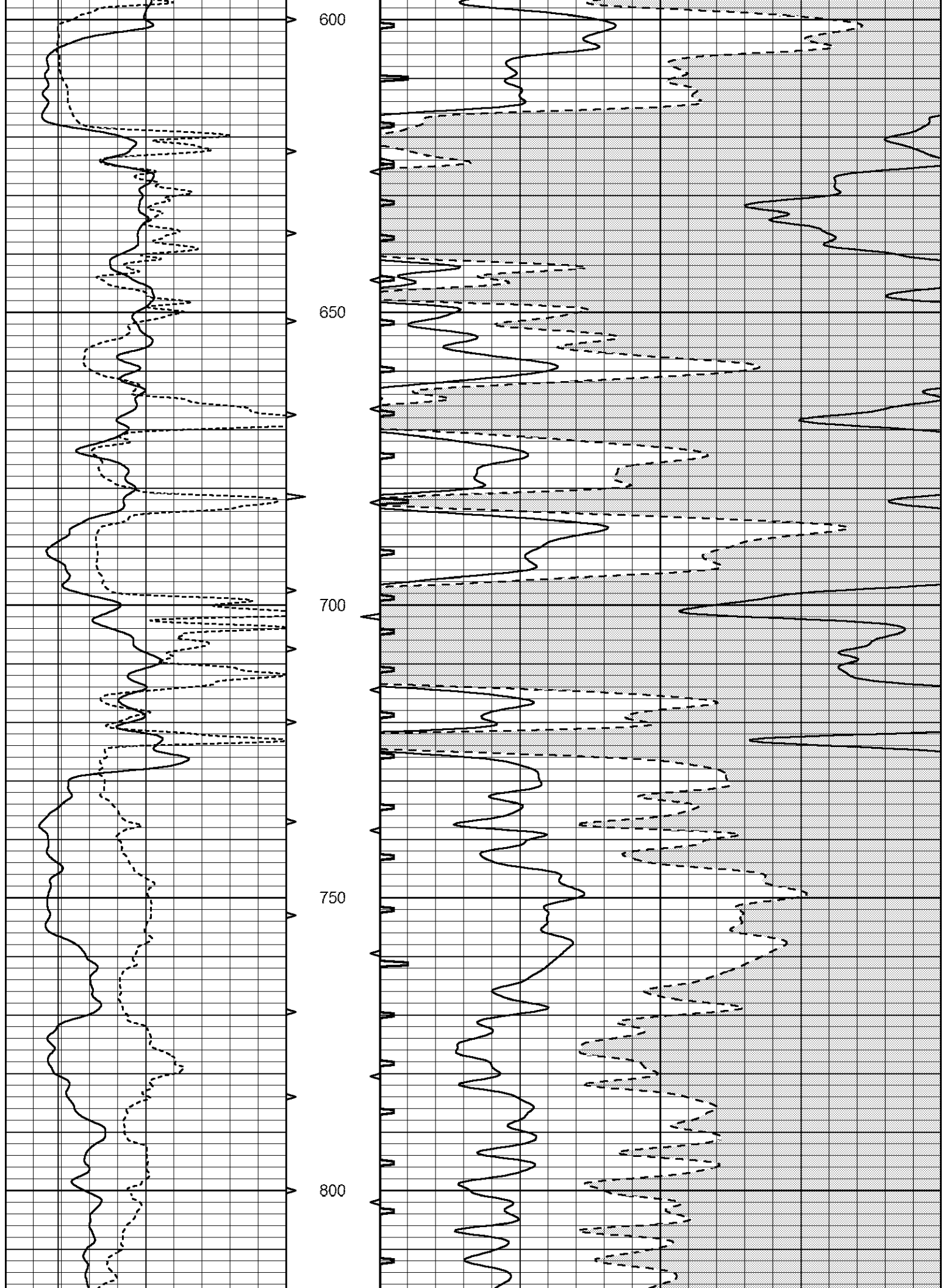
MAIN SECTION

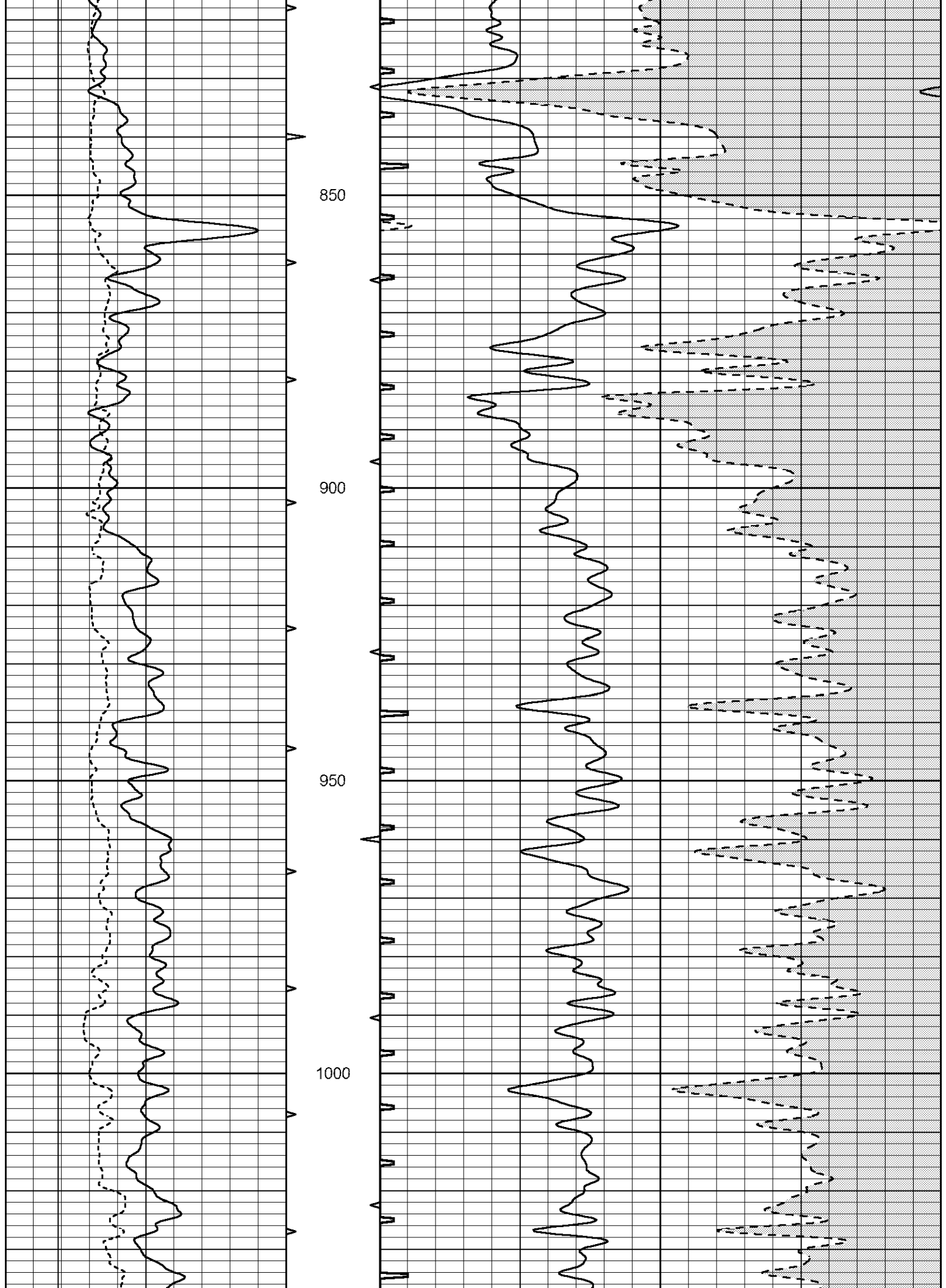
Database File 7023pe.db  
 Dataset Pathname pass6.4  
 Presentation Format \_slt  
 Dataset Creation Wed Sep 28 06:15:56 2022  
 Charted by Depth in Feet scaled 1:240

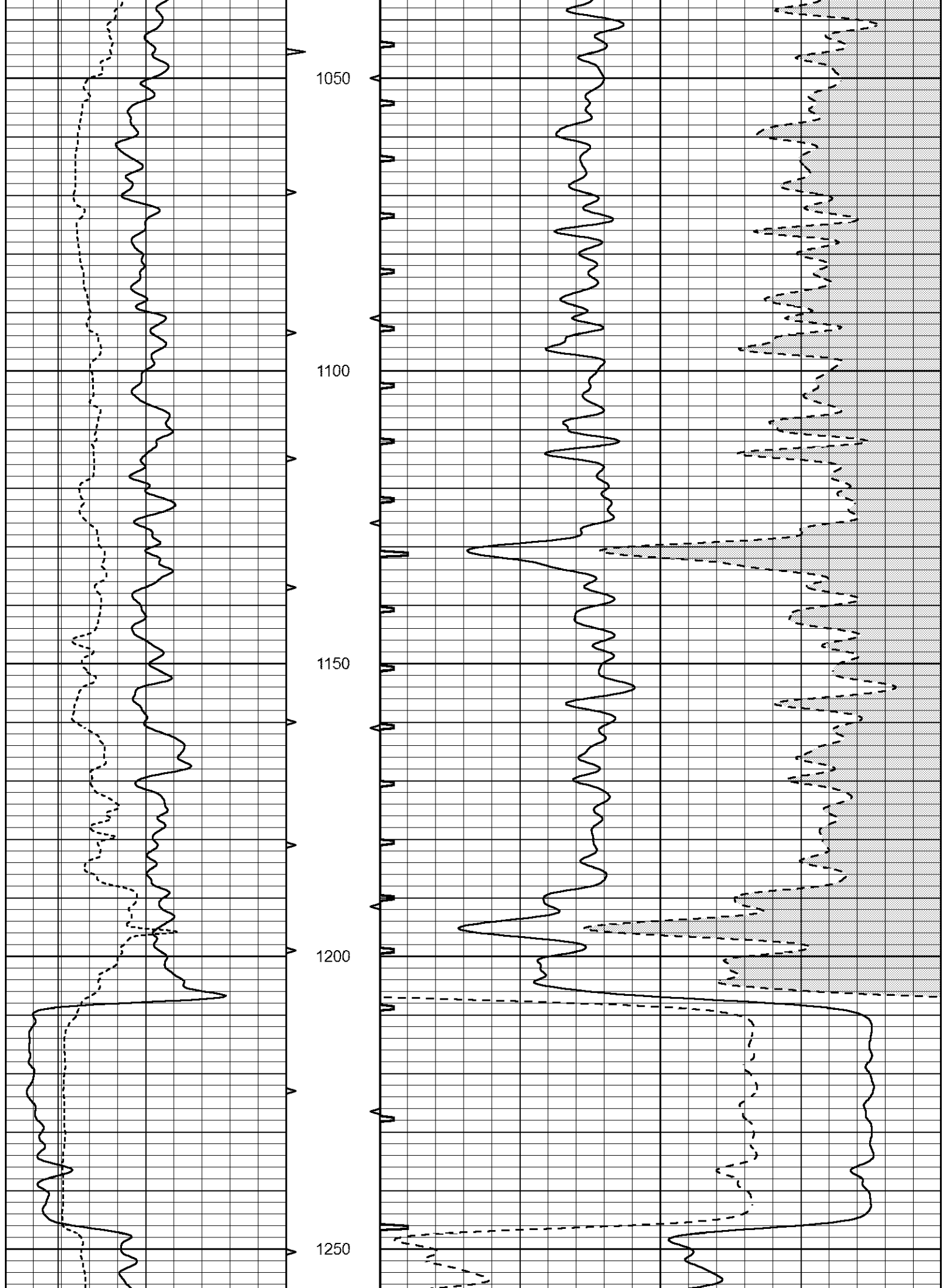
0	GAMMA RAY (GAPI)	150	ABHV	140	DELTA TIME (usec/ft)	40	
6	CALIPER (in)	16	10 (ft3)	0	30	SONIC POROSITY (pu)	-10
-----			TBHV	0	ITT (msec)	20	
			0 (ft3)	10			

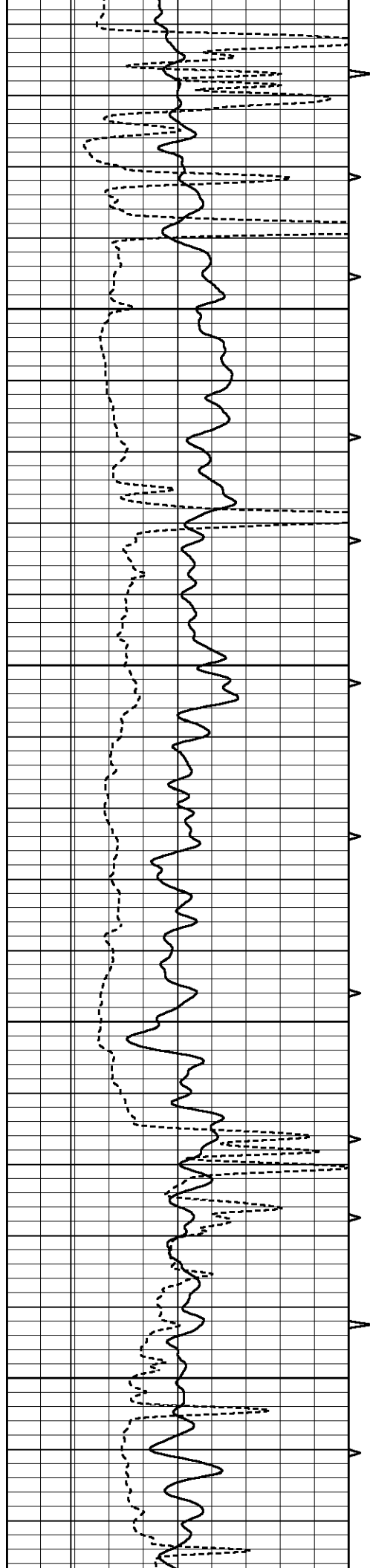










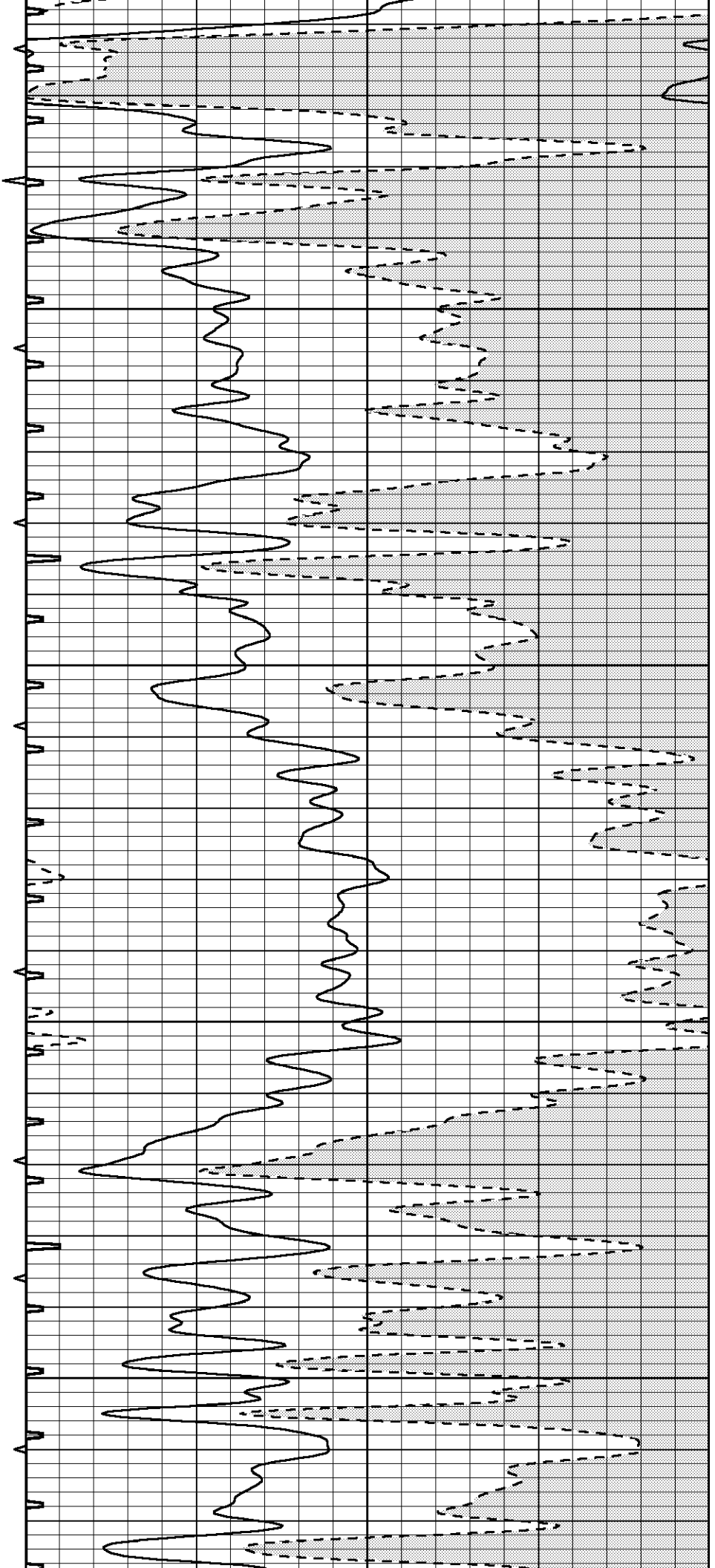


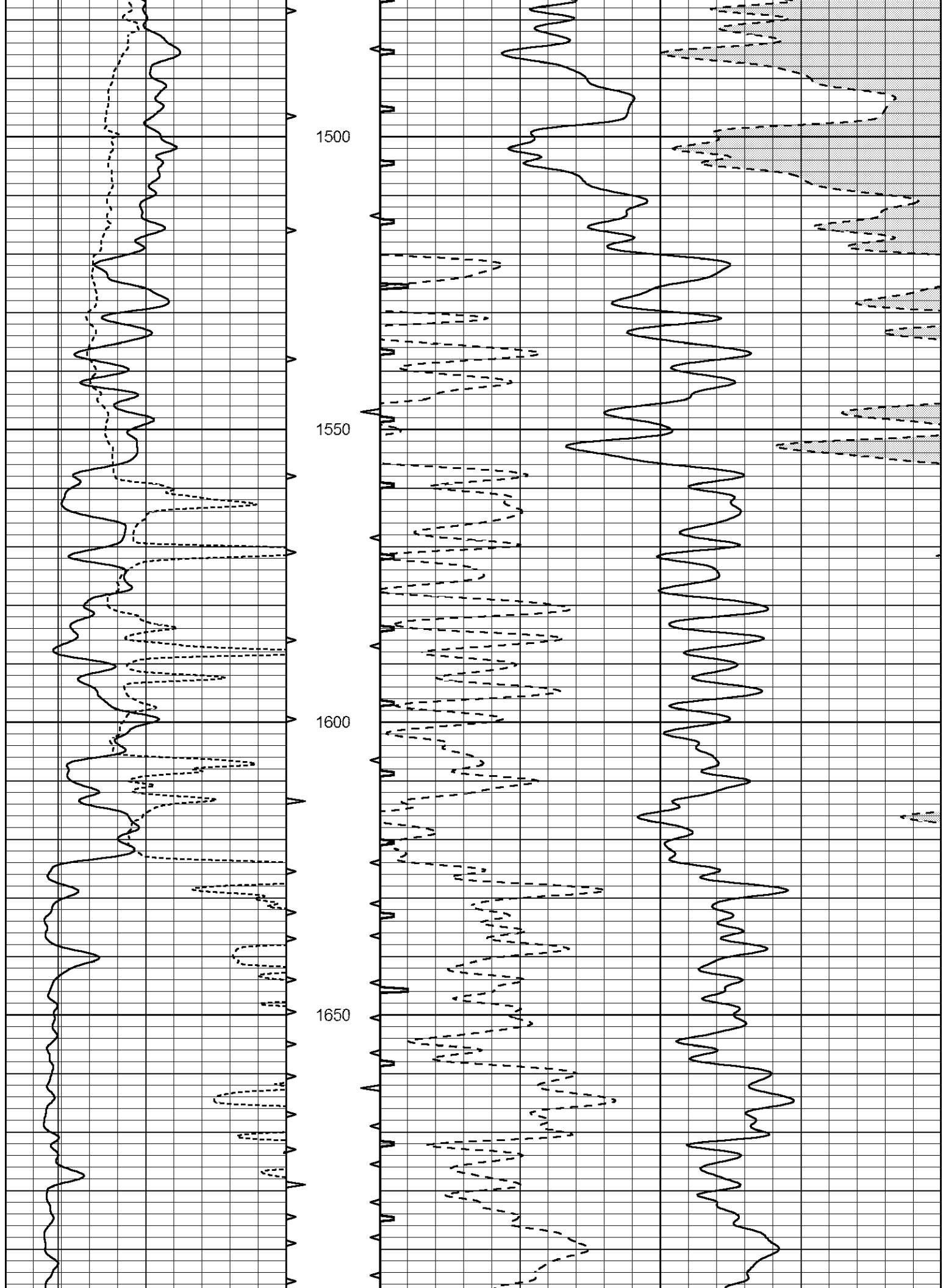
1300

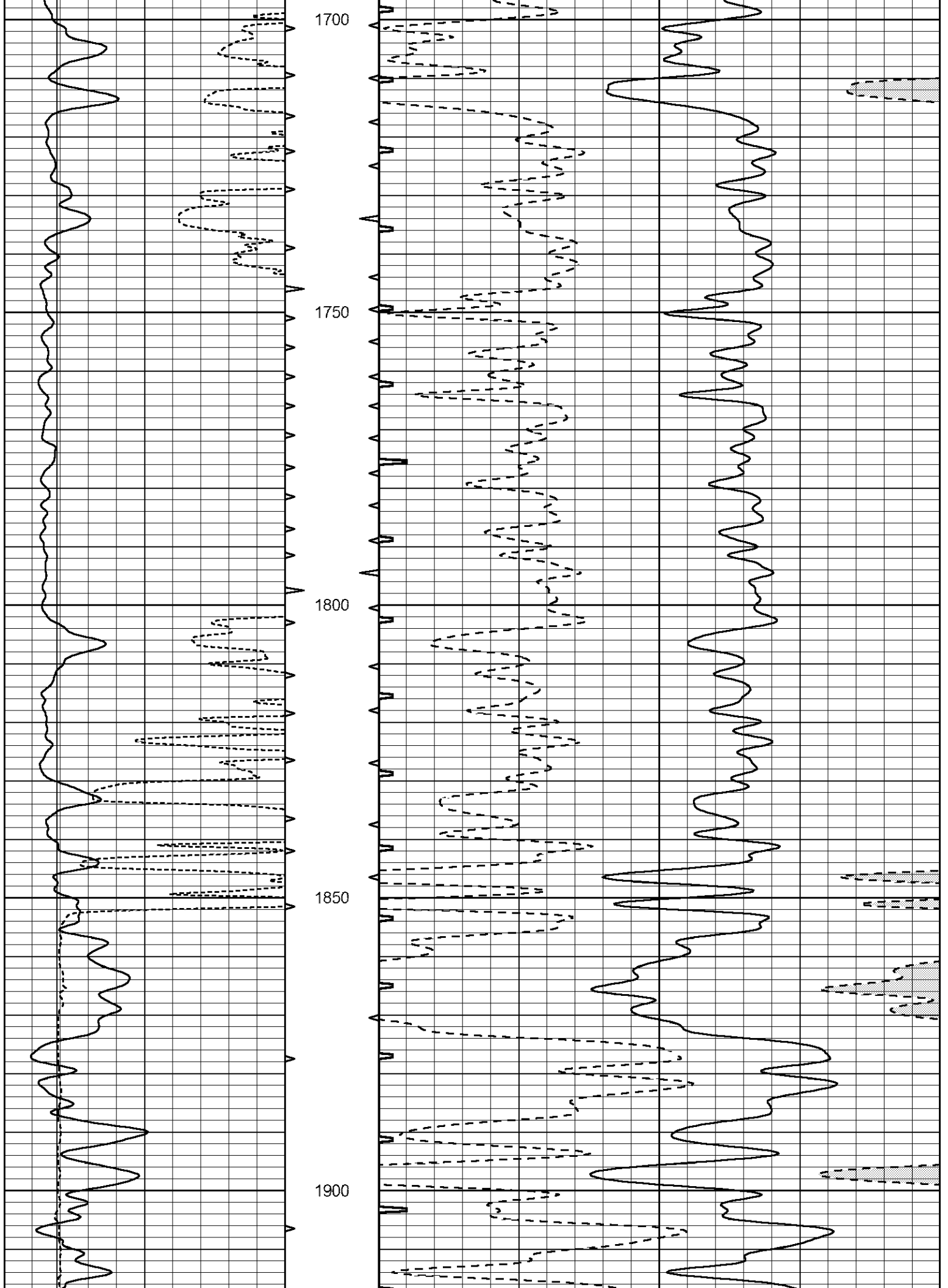
1350

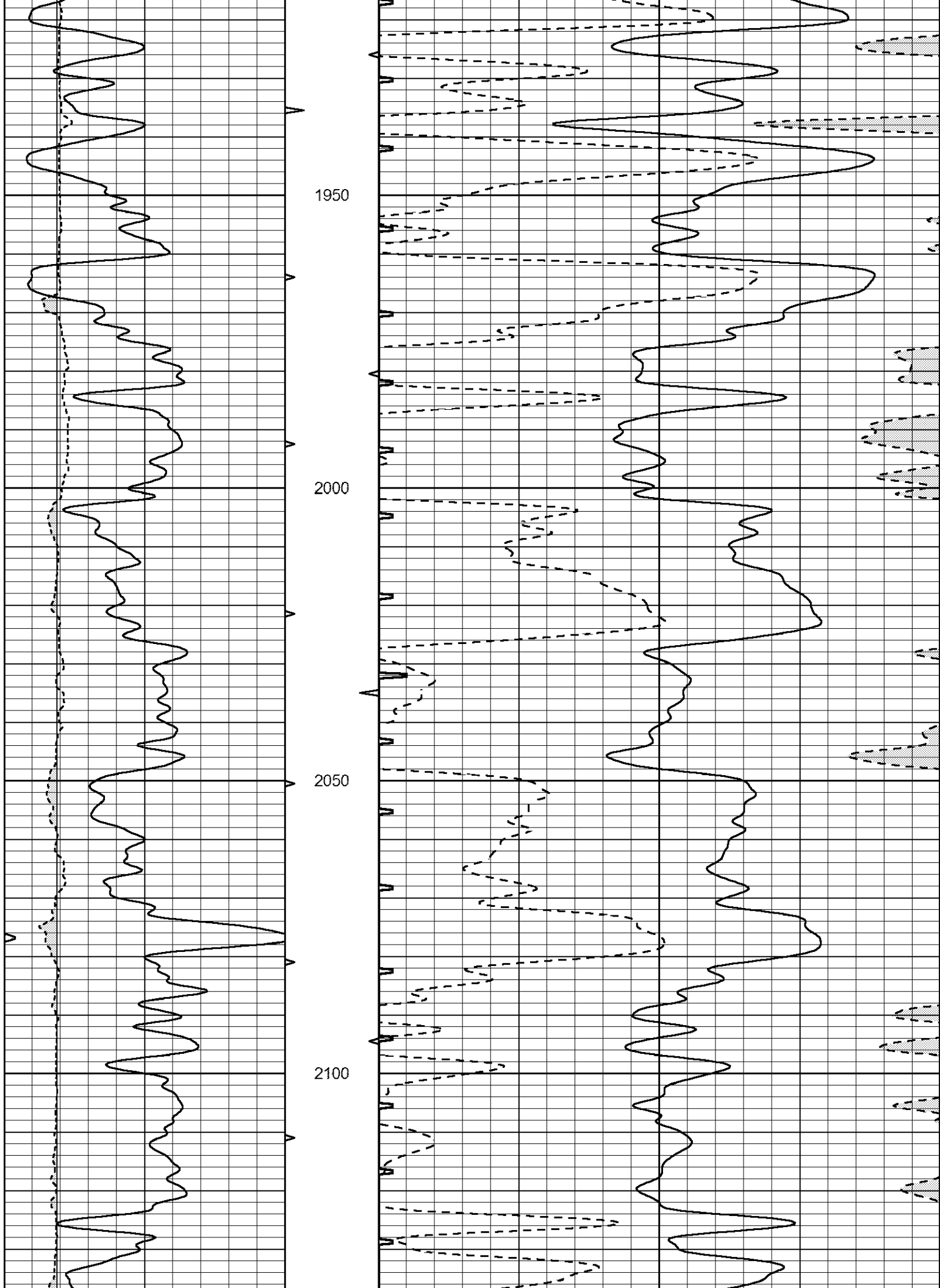
1400

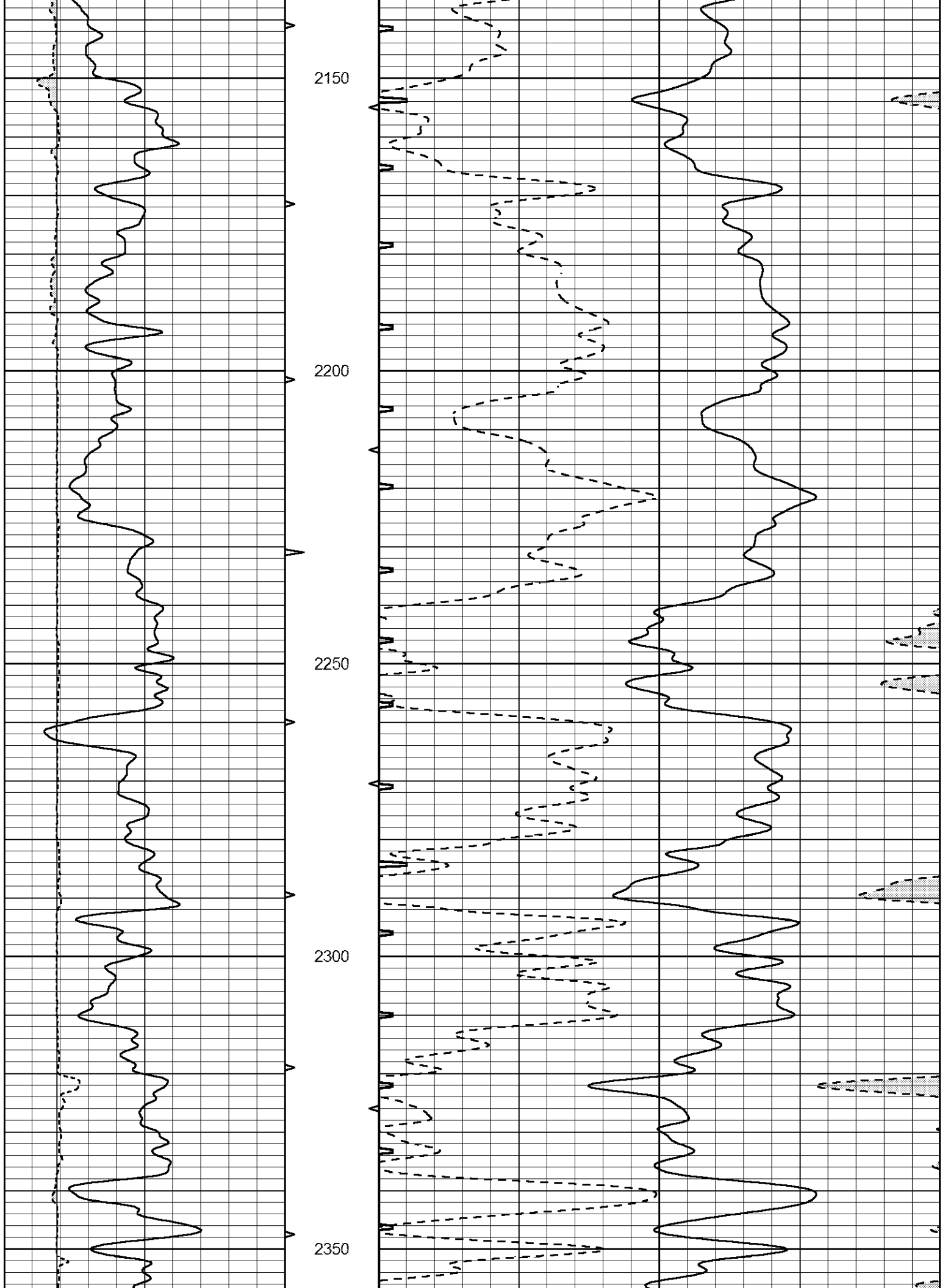
1450

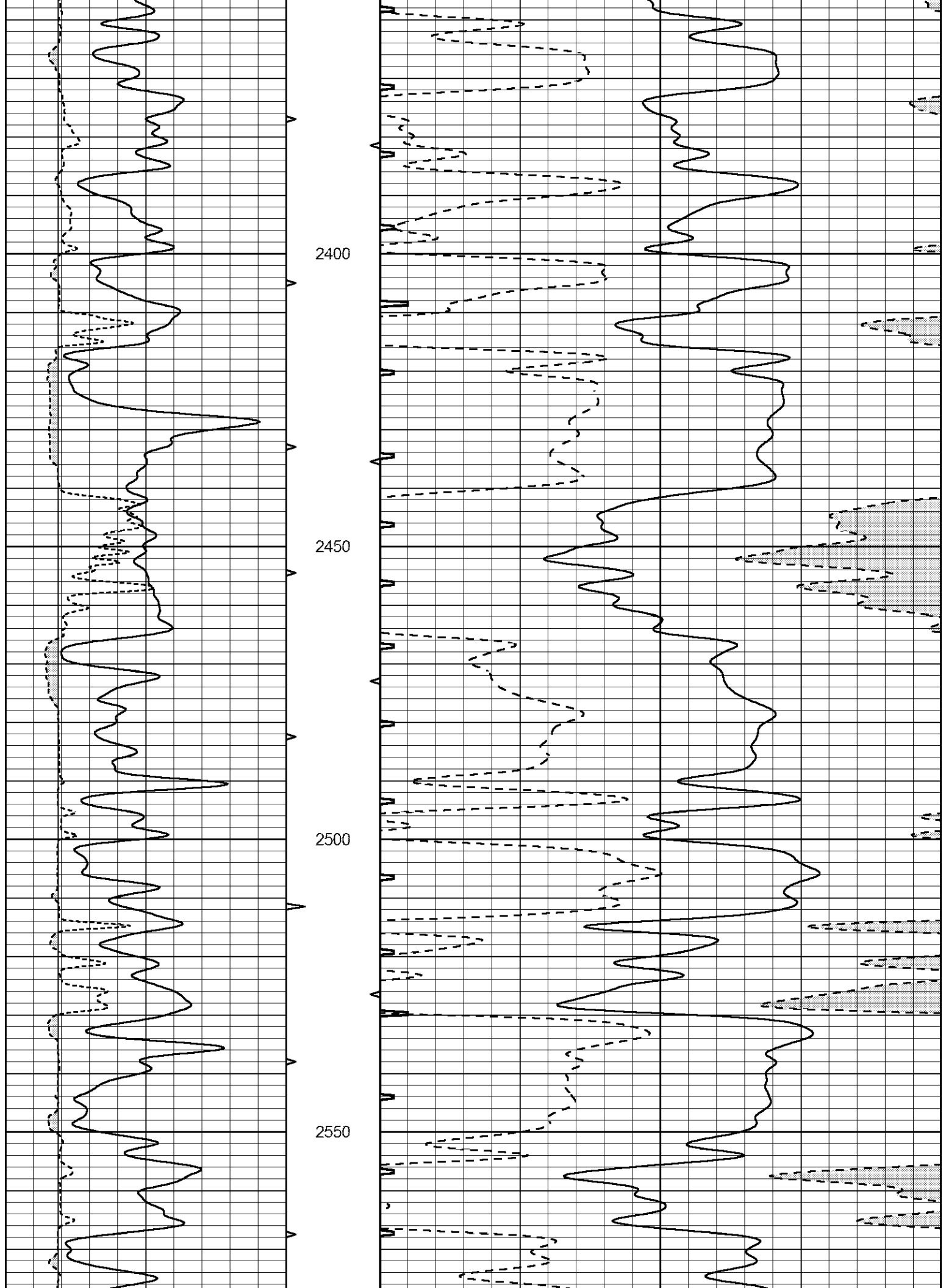


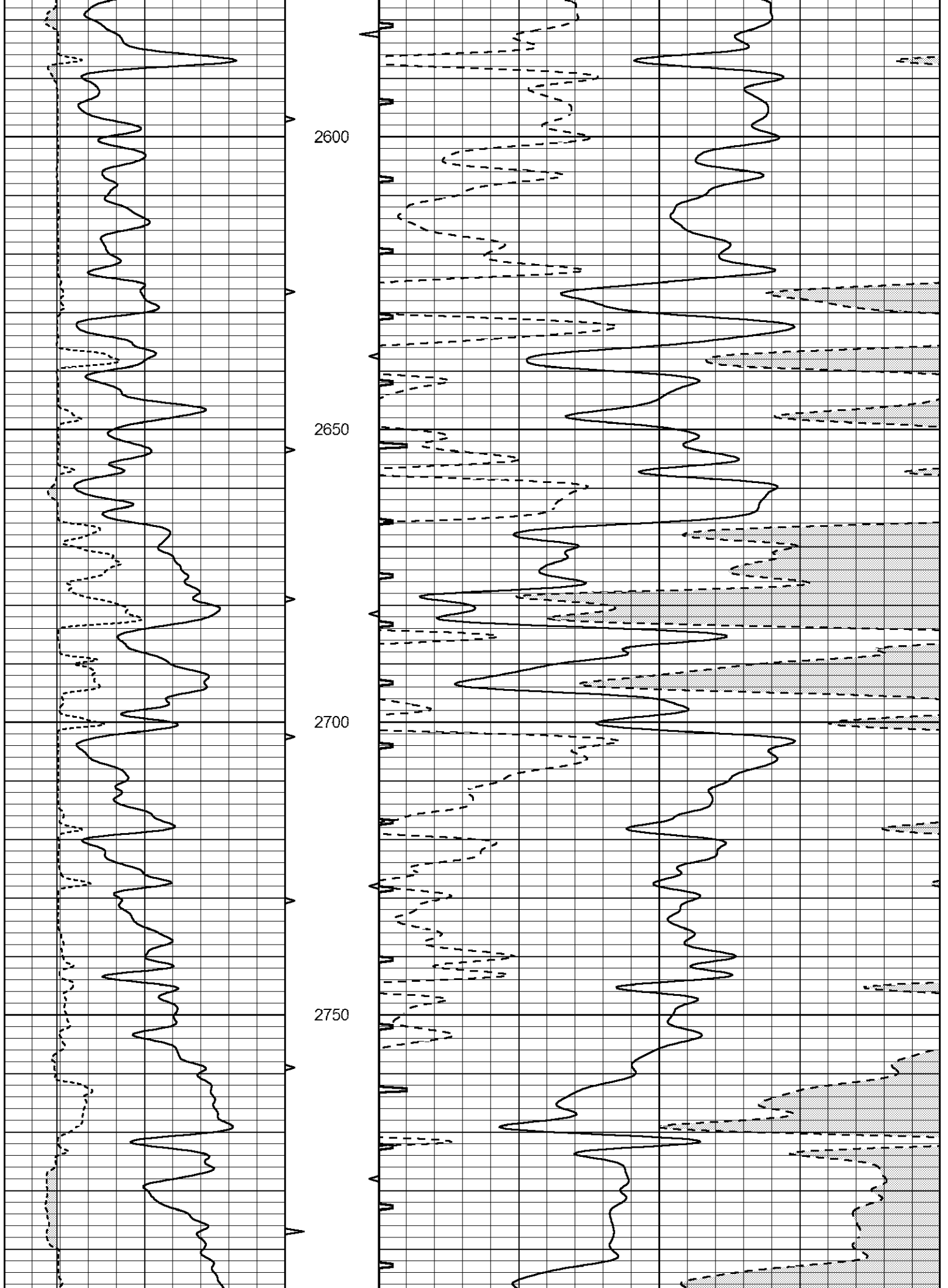


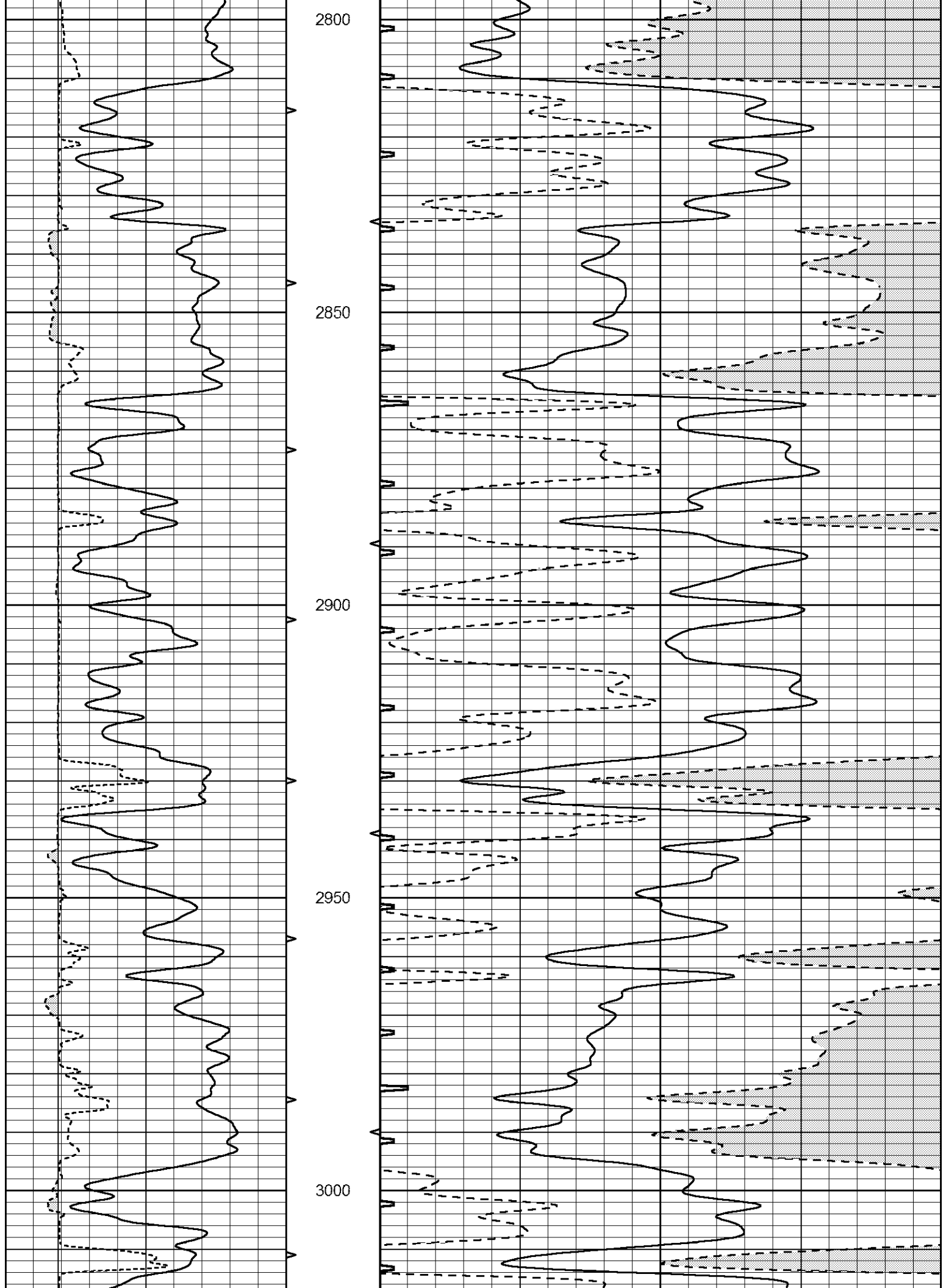


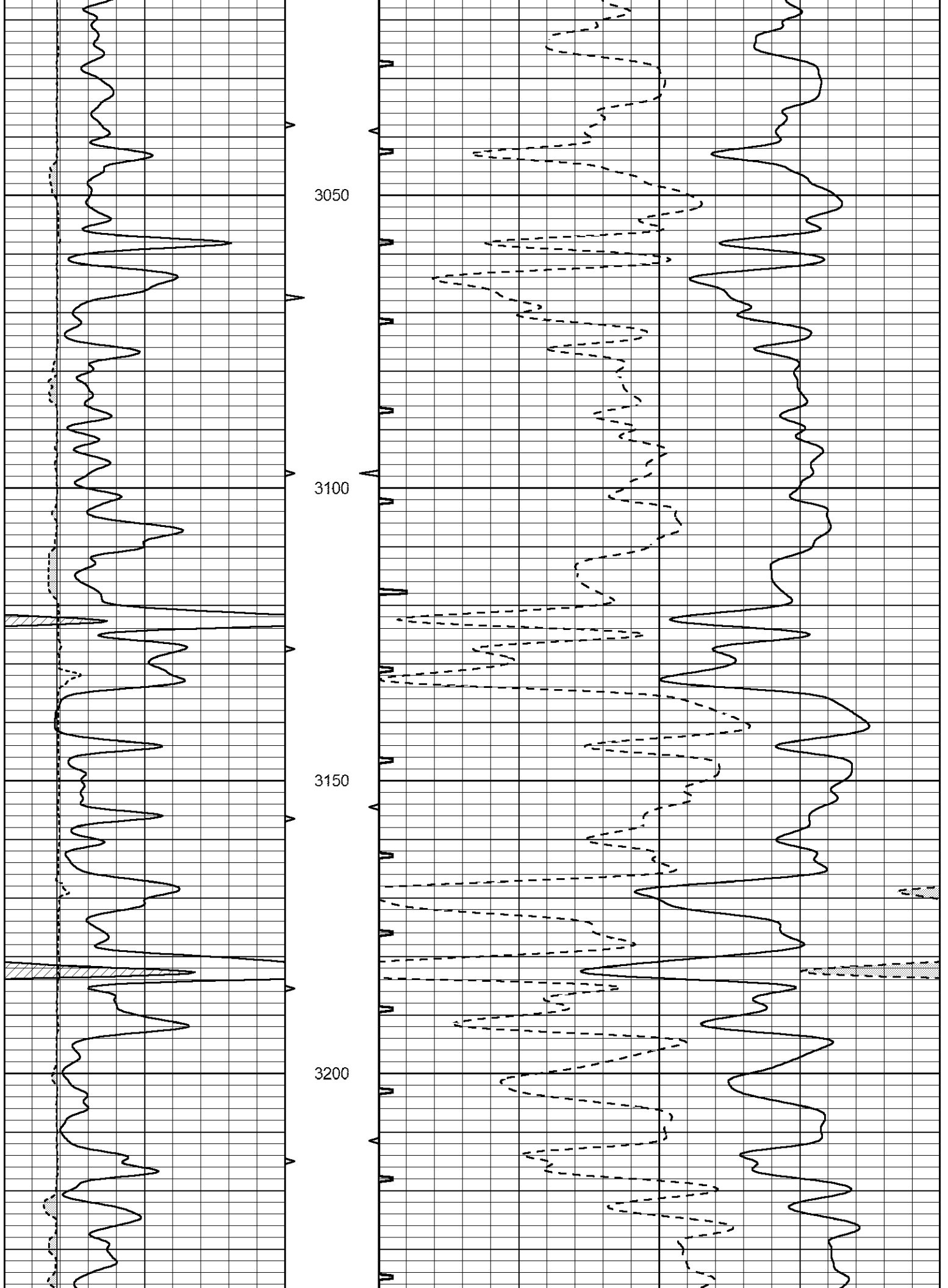


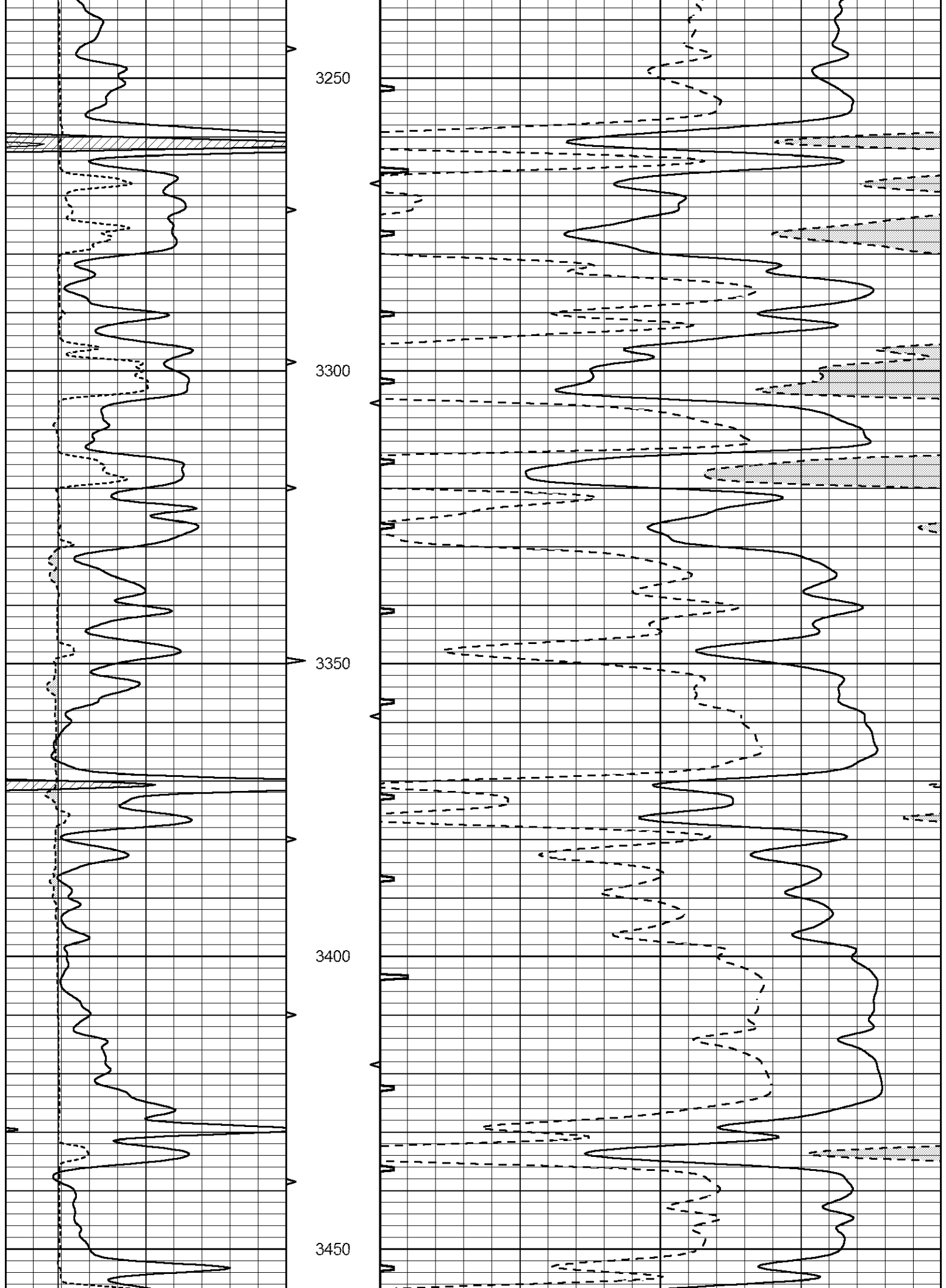


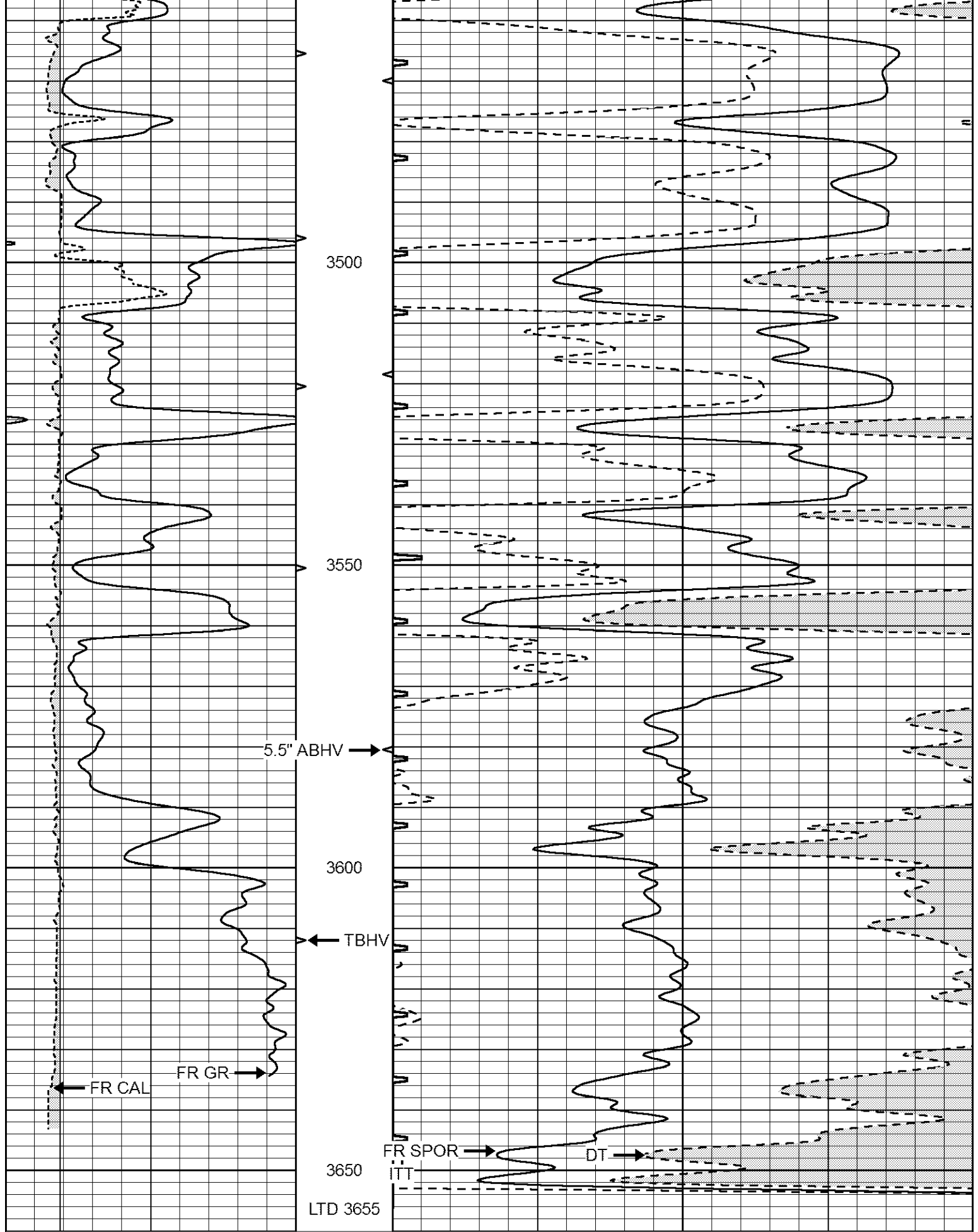




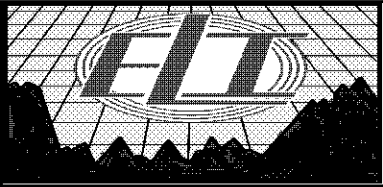








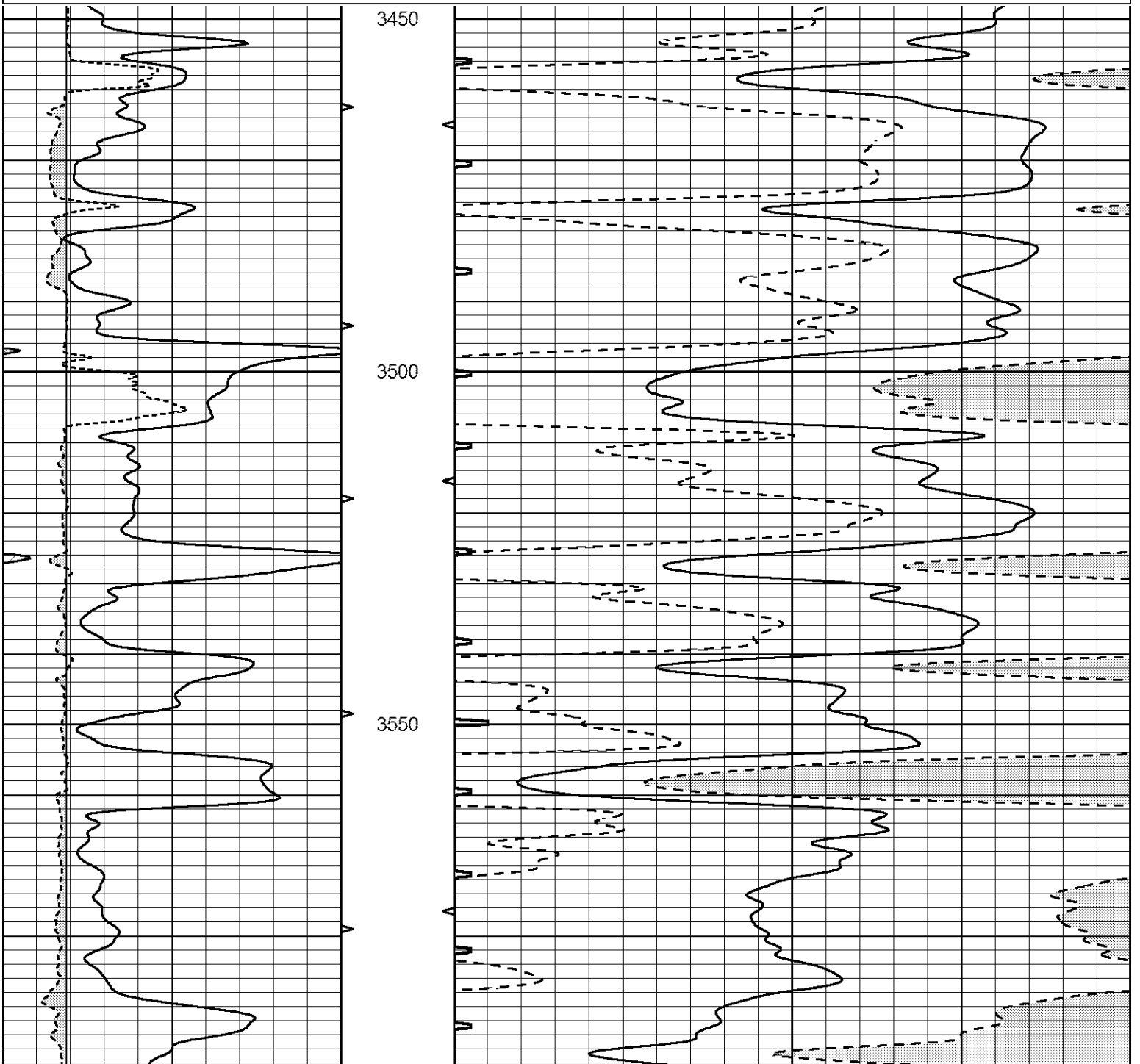
0	GAMMA RAY (GAPI)	150	ABHV	140	DELTA TIME (usec/ft)	40
6	CALIPER (in)	16	10 (ft3)	0 30	SONIC POROSITY (pu)	-10
			TBHV	0	ITT (msec)	20
			0 (ft3)	10		

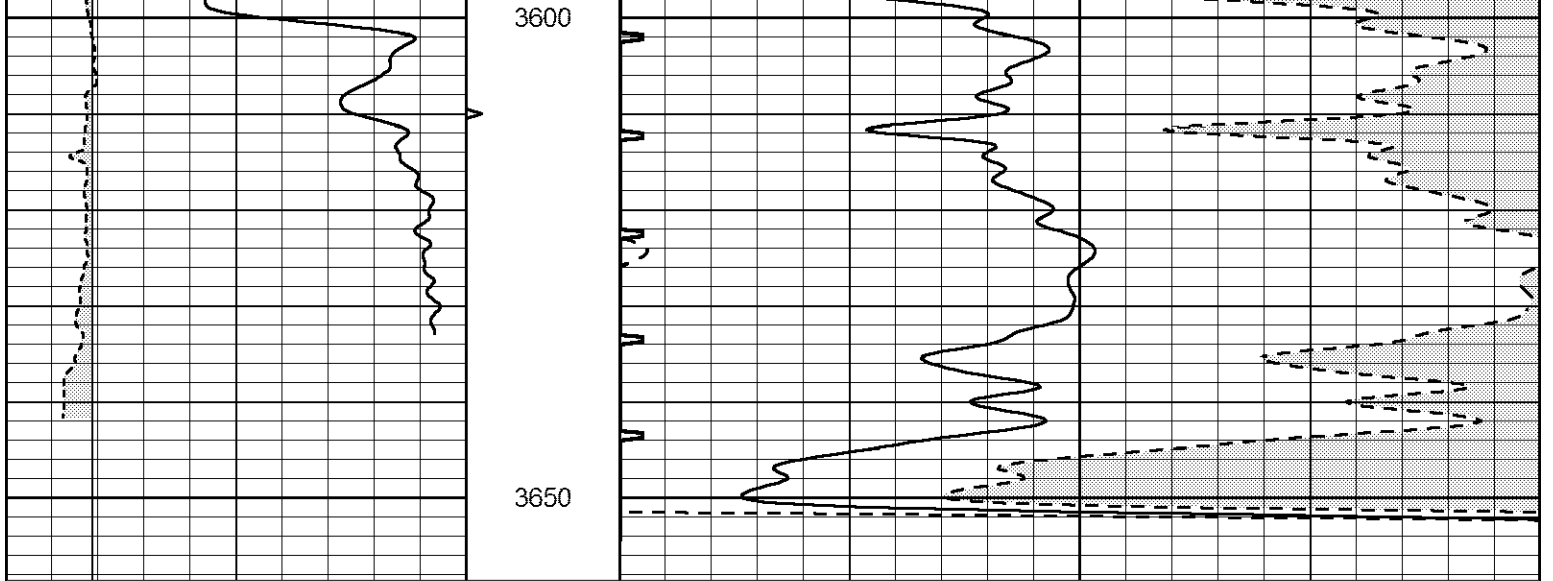


# REPEAT SECTION

Database File 7023pe.db  
 Dataset Pathname pass5.1  
 Presentation Format \_sit  
 Dataset Creation Wed Sep 28 06:34:36 2022  
 Charted by Depth in Feet scaled 1:240

0	GAMMA RAY (GAPI)	150	ABHV	140	DELTA TIME (usec/ft)	40
6	CALIPER (in)	16	10 (ft3)	0 30	SONIC POROSITY (pu)	-10
			TBHV	0	ITT (msec)	20
			0 (ft3)	10		





0	GAMMA RAY (GAPI)	150	ABHV	140	DELTA TIME (usec/ft)	40
6	CALIPER (in)	16	10 (ft3) 0	30	SONIC POROSITY (pu)	-10
			TBHV	0	ITT (msec)	20
			0 (ft3) 10			