



**COMPENSATED  
DENSITY/NEUTRON  
PE LOG**

Company SATCHELL CREEK PETROLEUM, LLC  
 Well CATHEDRAL #A-3  
 Field CATHARINE EAST  
 County ELLIS  
 State KANSAS

Company SATCHELL CREEK PETROLEUM, LLC  
 Well CATHEDRAL #A-3  
 Field CATHARINE EAST  
 County ELLIS State KANSAS

Location: API #: 15-051-27053-0000  
 330' FNL & 915' FEL  
 E2 - NW - NE - NE  
 SEC 11 TWP 13S RGE 17W  
 Permanent Datum GROUND LEVEL Elevation 2033  
 Log Measured From KELLY BUSHING 6' A.G.L  
 Drilling Measured From KELLY BUSHING  
 Other Services  
 DILMEL  
 SONIC  
 Elevation  
 K.B. 2039  
 D.F. 2037  
 G.L. 2033

Date	9/28/22	
Run Number	ONE	
Depth Driller	3655	
Depth Logger	3655	
Bottom Logged Interval	3631	
Top Log Interval	200	
Casing Driller	8 5/8" @ 210	
Casing Logger	226	
Bit Size	7 7/8	
Type Fluid in Hole	CHEMICAL MUD	CHLORIDES 14,000 PPM
Density / Viscosity	9.0/64	
pH / Fluid Loss	9.0/10.0	
Source of Sample	FLOWLINE	
Rm @ Meas. Temp	.800 @ 80F	
Rmt @ Meas. Temp	.600 @ 80F	
Rmc @ Meas. Temp	.960 @ 80F	
Source of Rmf / Rmc	MEASUREMENT	
Rm @ BHT	.566 @ 113F	
Time Circulation Stopped	4 HOURS	
Time Logger on Bottom	2:00 A.M.	
Maximum Recorded Temperature	113F	
Equipment Number	3802	
Location	HAYS, KANSAS	
Recorded By	COLE ROBBEN	
Witnessed By	CHAD COUNTS	

<<< Fold Here >>>

All interpretations are opinions based on inferences from electrical or other measurements and we cannot and do not guarantee the accuracy or correctness of any interpretation, and we shall not, except in the case of gross or willful negligence on our part, be liable or responsible for any loss, costs, damages, or expenses incurred or sustained by anyone resulting from any interpretation made by any of our officers, agents or employees. These interpretations are also subject to our general terms and conditions set out in our current Price Schedule.

**Comments**

THANK YOU FOR USING ELI WIRELINE SERVICES, HAYS, KS. ( 785 ) 628-6395

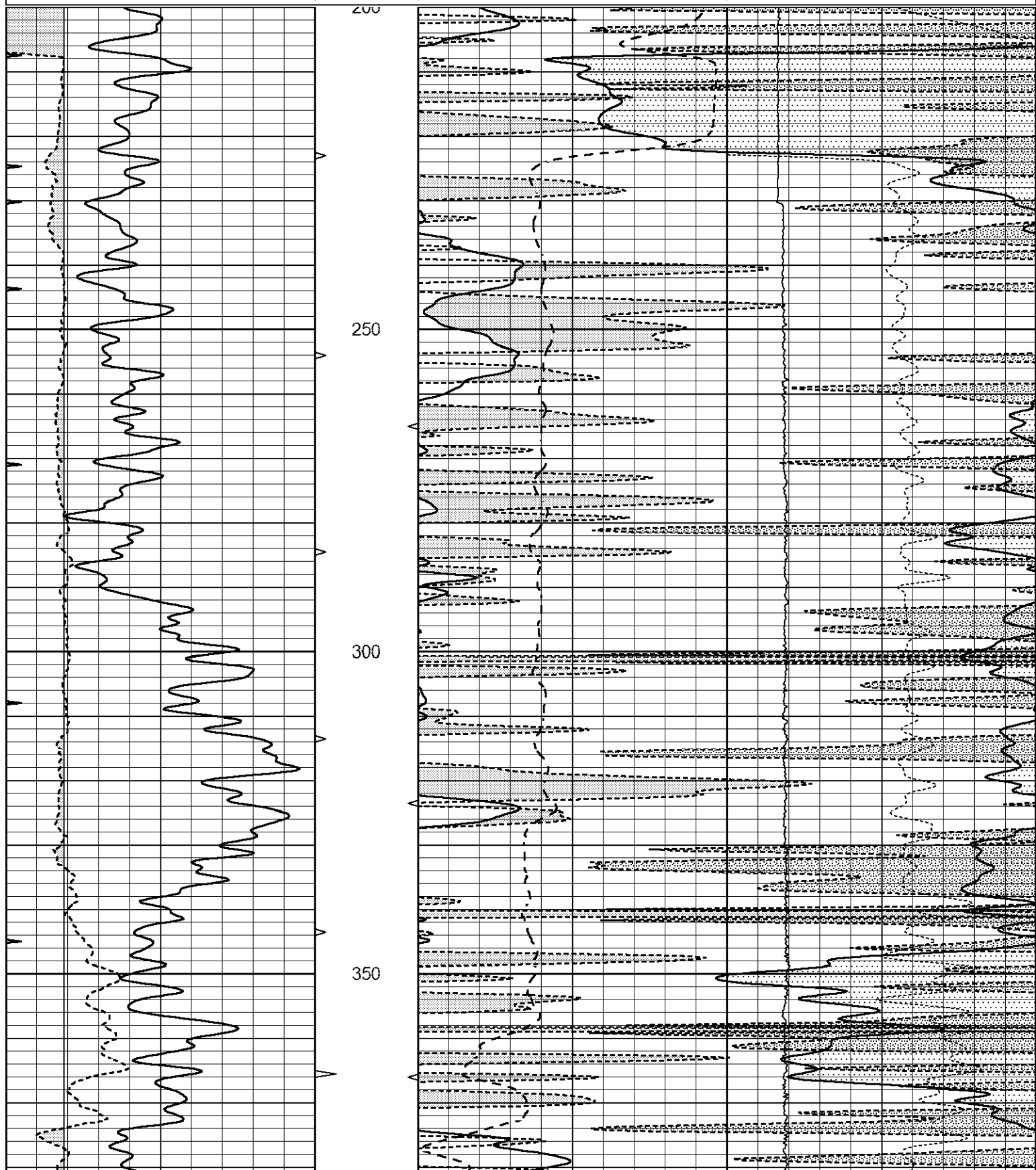
DIRECTIONS:  
 FROM VICTORIA/CATHARINE BLACKTOP INTERSECTION, 1 MILE WEST, 1/2 MILE NORTH,  
 WEST INTO

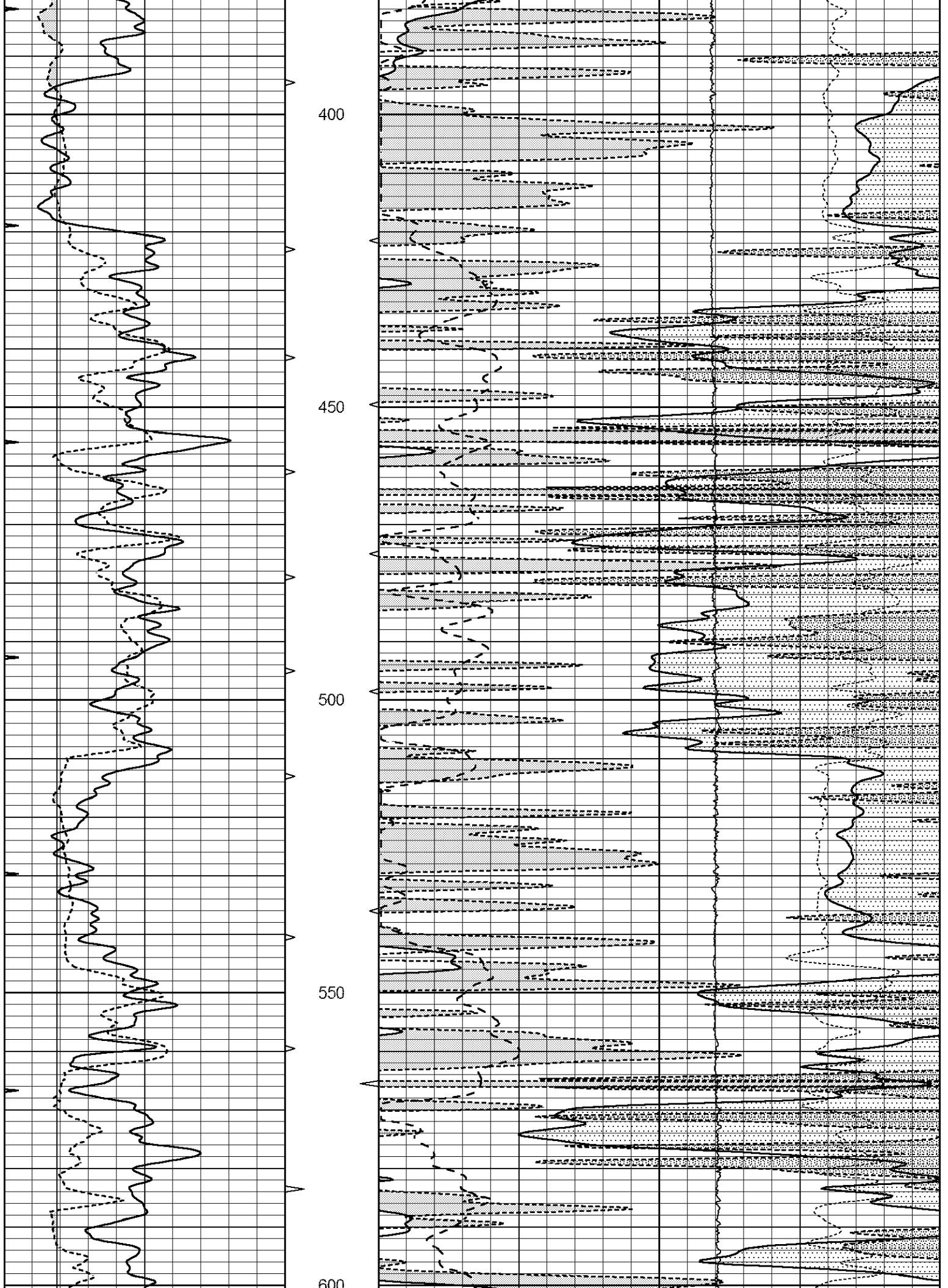


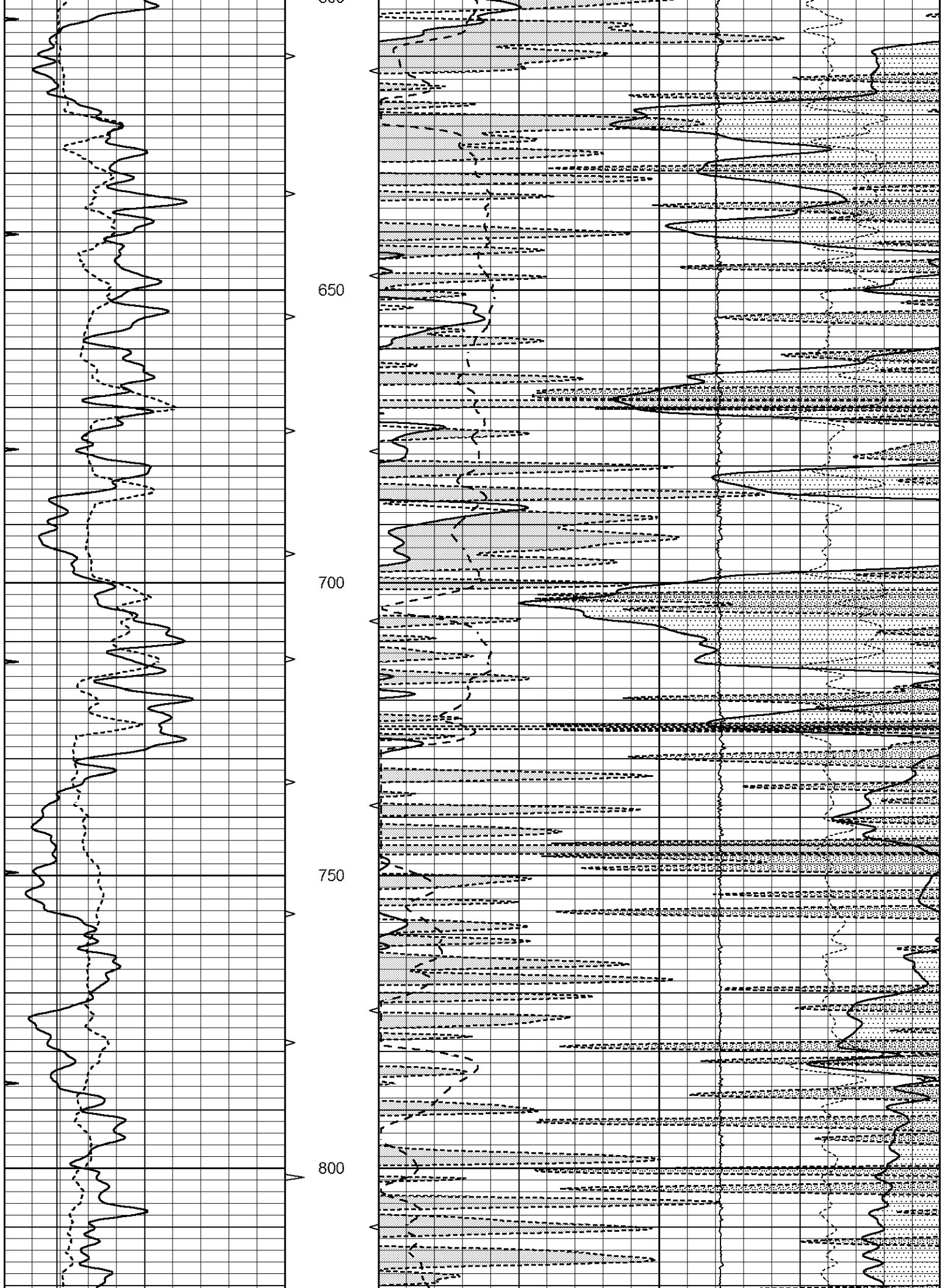
**MAIN SECTION**

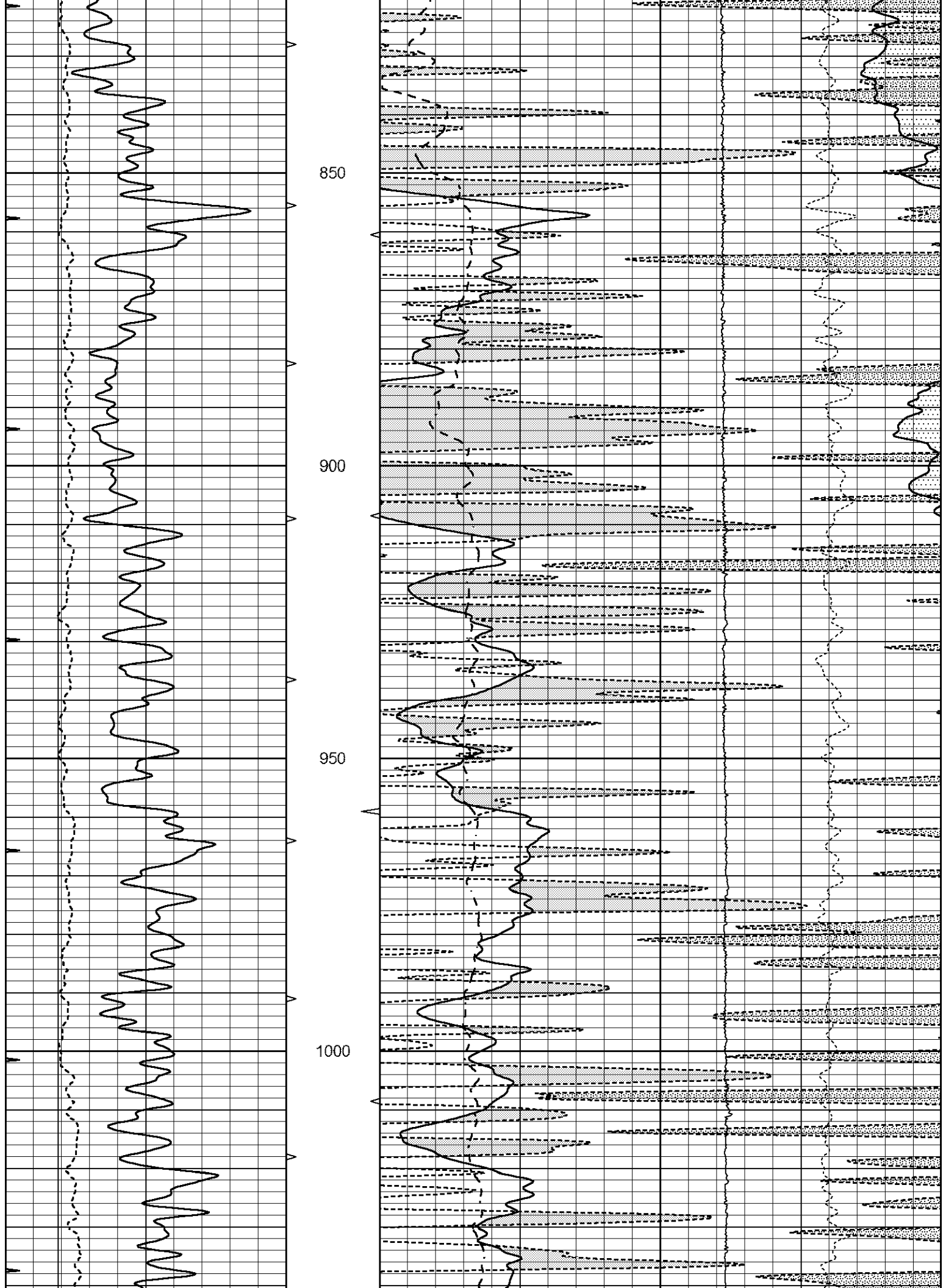
Database File 7023pe.db  
 Dataset Pathname pass3M  
 Presentation Format \_ldt\_neu  
 Dataset Creation Wed Sep 28 04:39:17 2022  
 Charted by Depth in Feet scaled 1:240

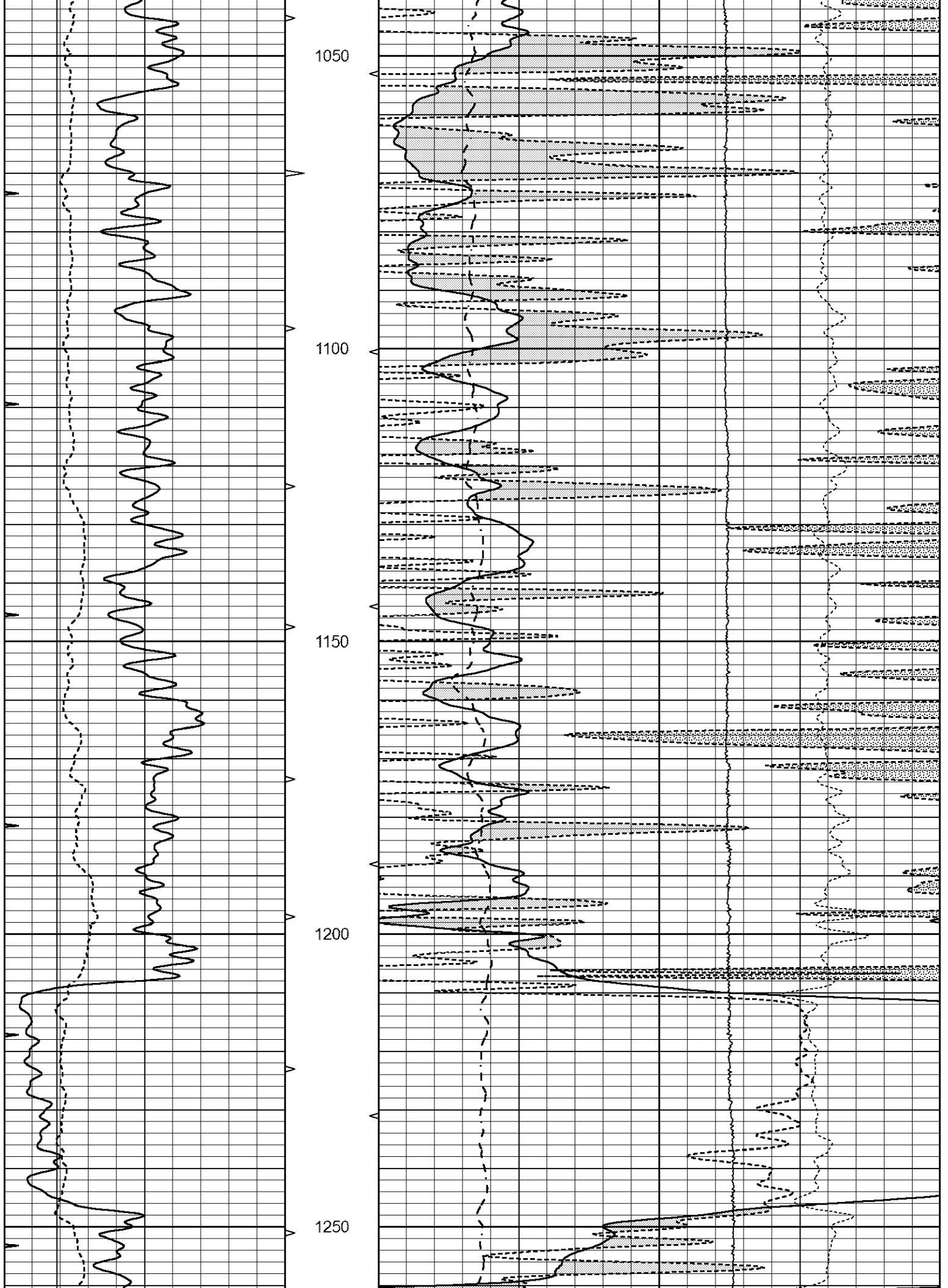
0	GAMMA RAY (GAPI)	150	ABHV	30	COMPENSATED DENSITY (pu)				-10	
6	CALIPER (in)	16	10 (ft3)	0	30	COMPENSATED NEUTRON (pu)				-10
0	MINMK	20	TBHV	0	PE	10	-0.25	CORRECTION (g/cc)	0.25	
			0 (ft3)	10			0	LTEN (lb)	5000	

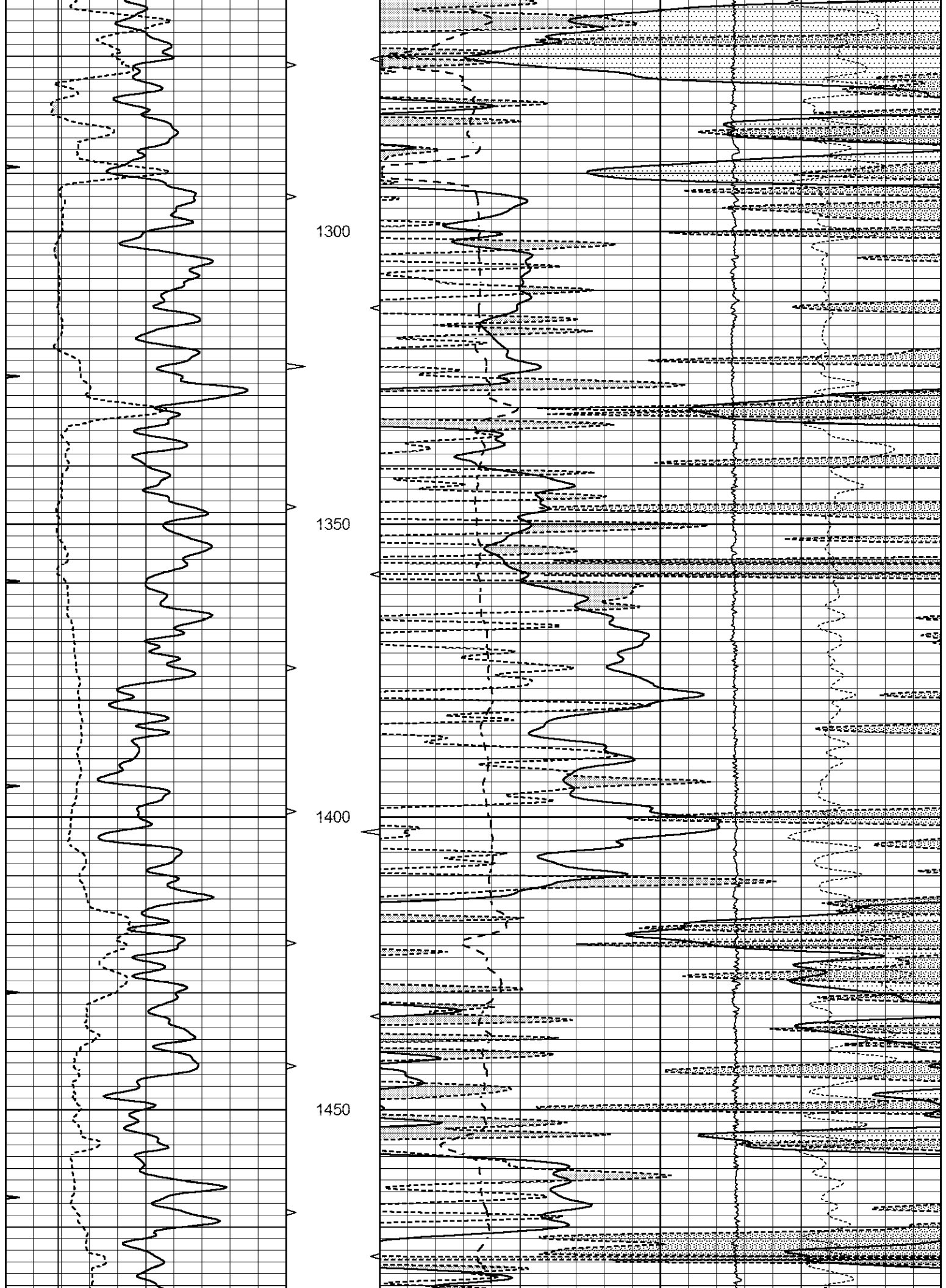


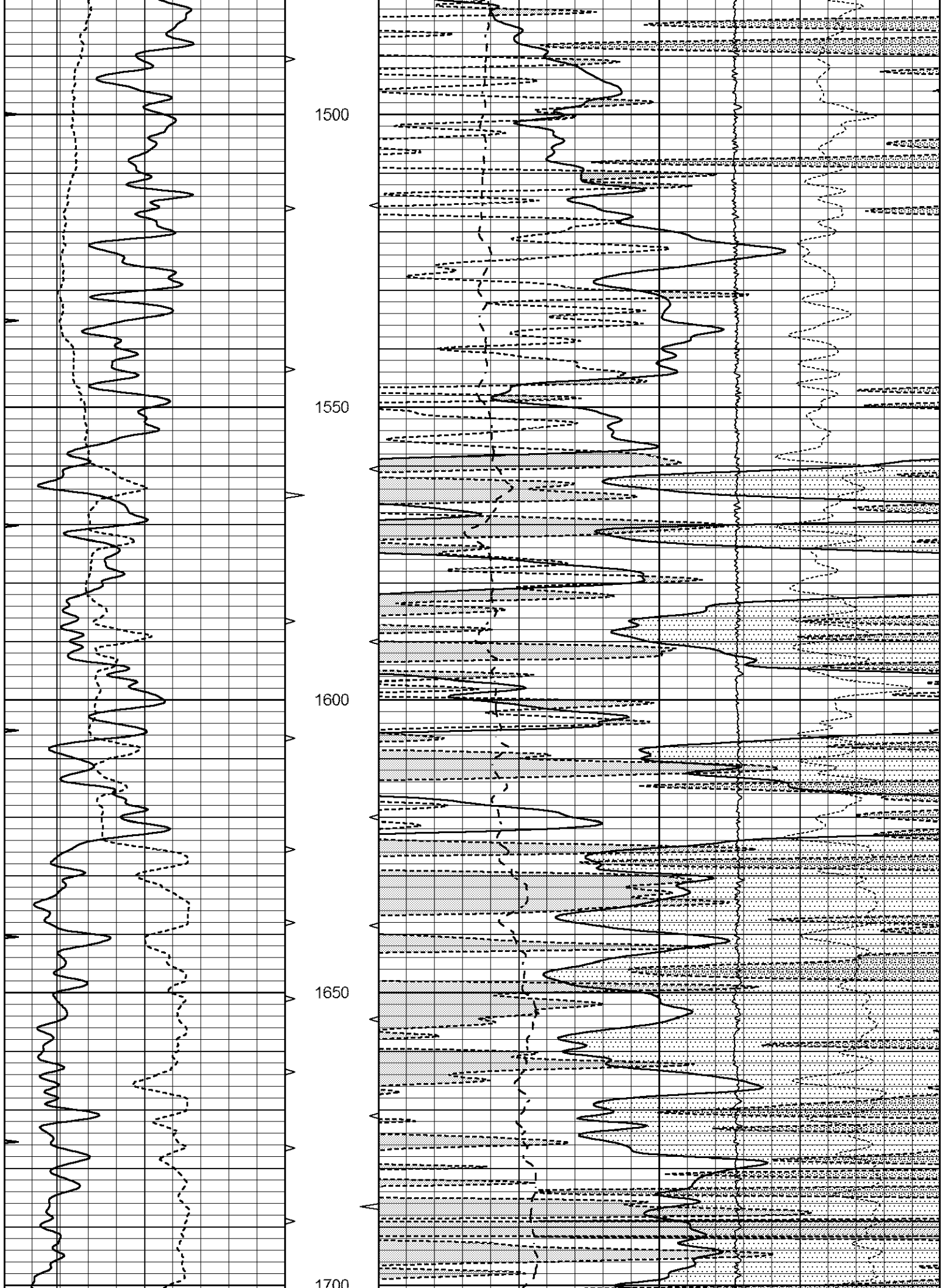


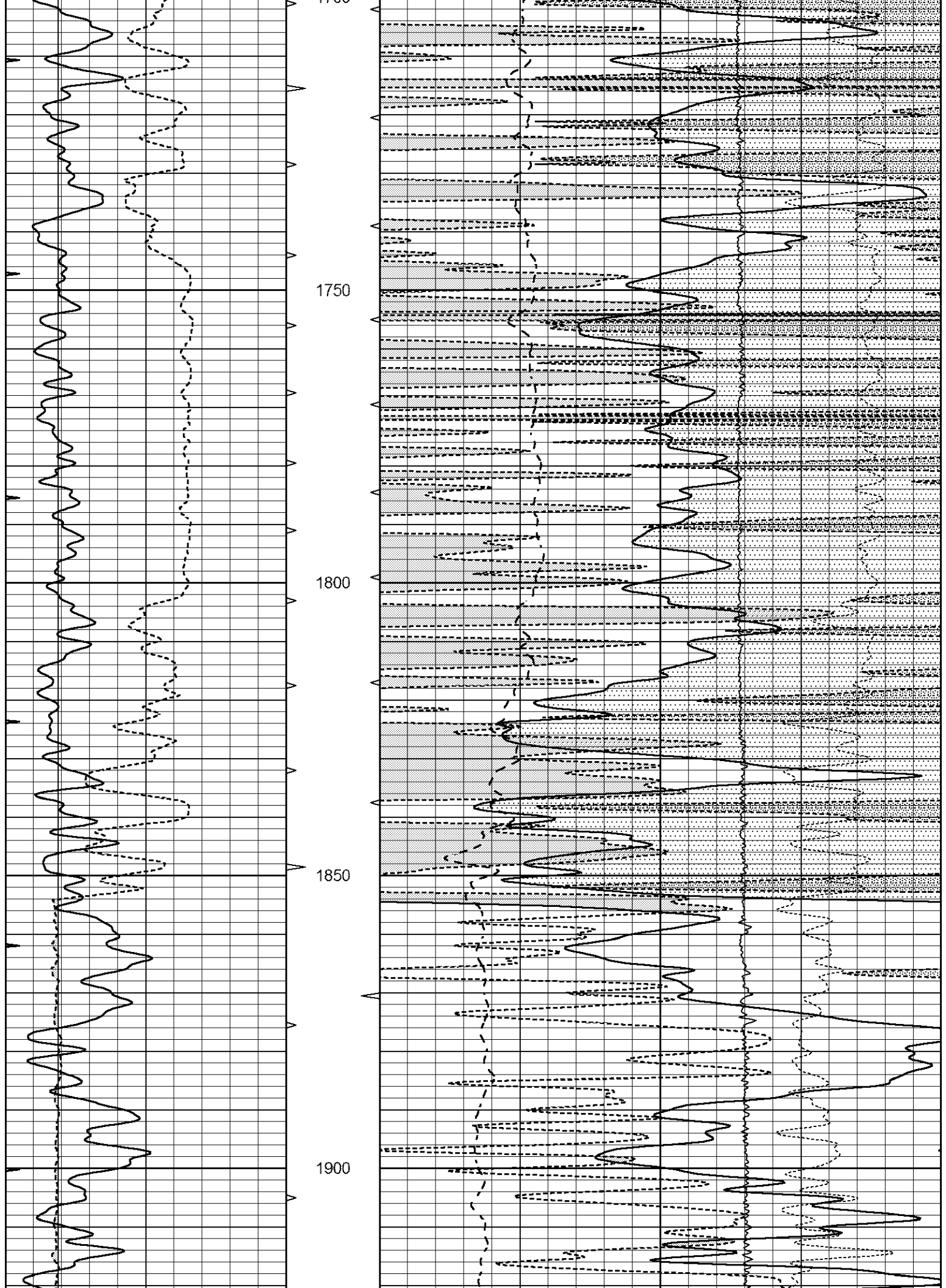


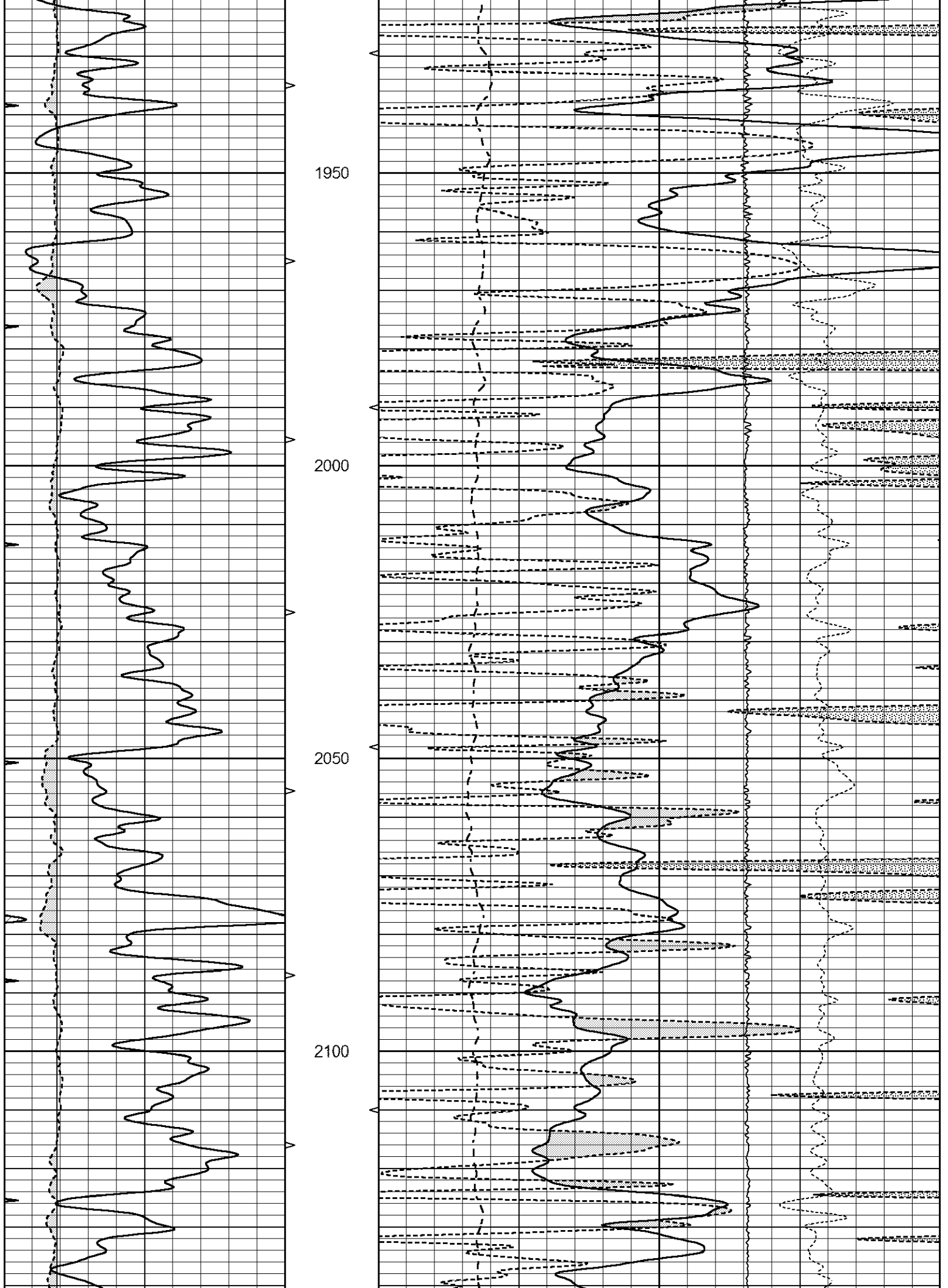


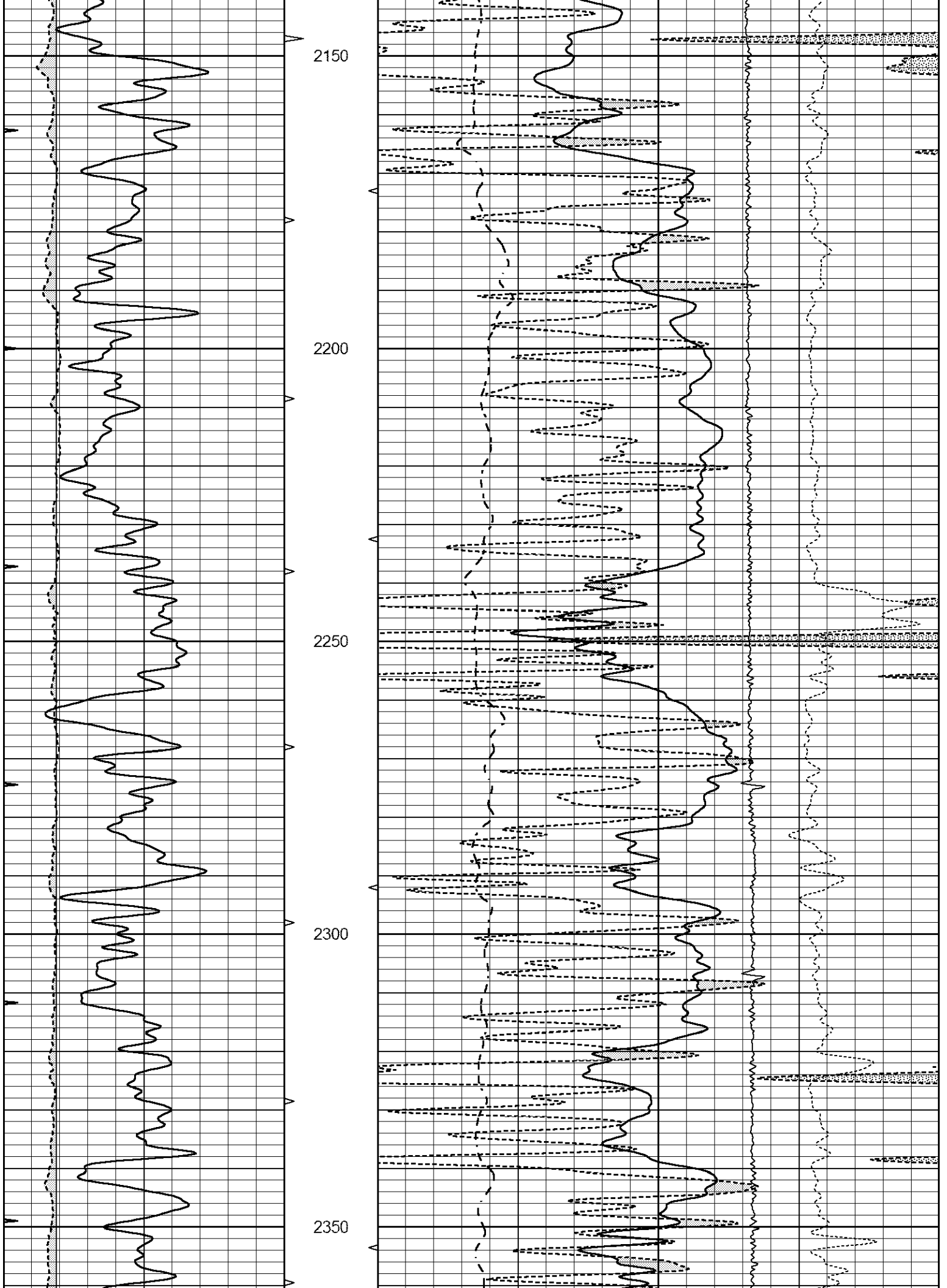


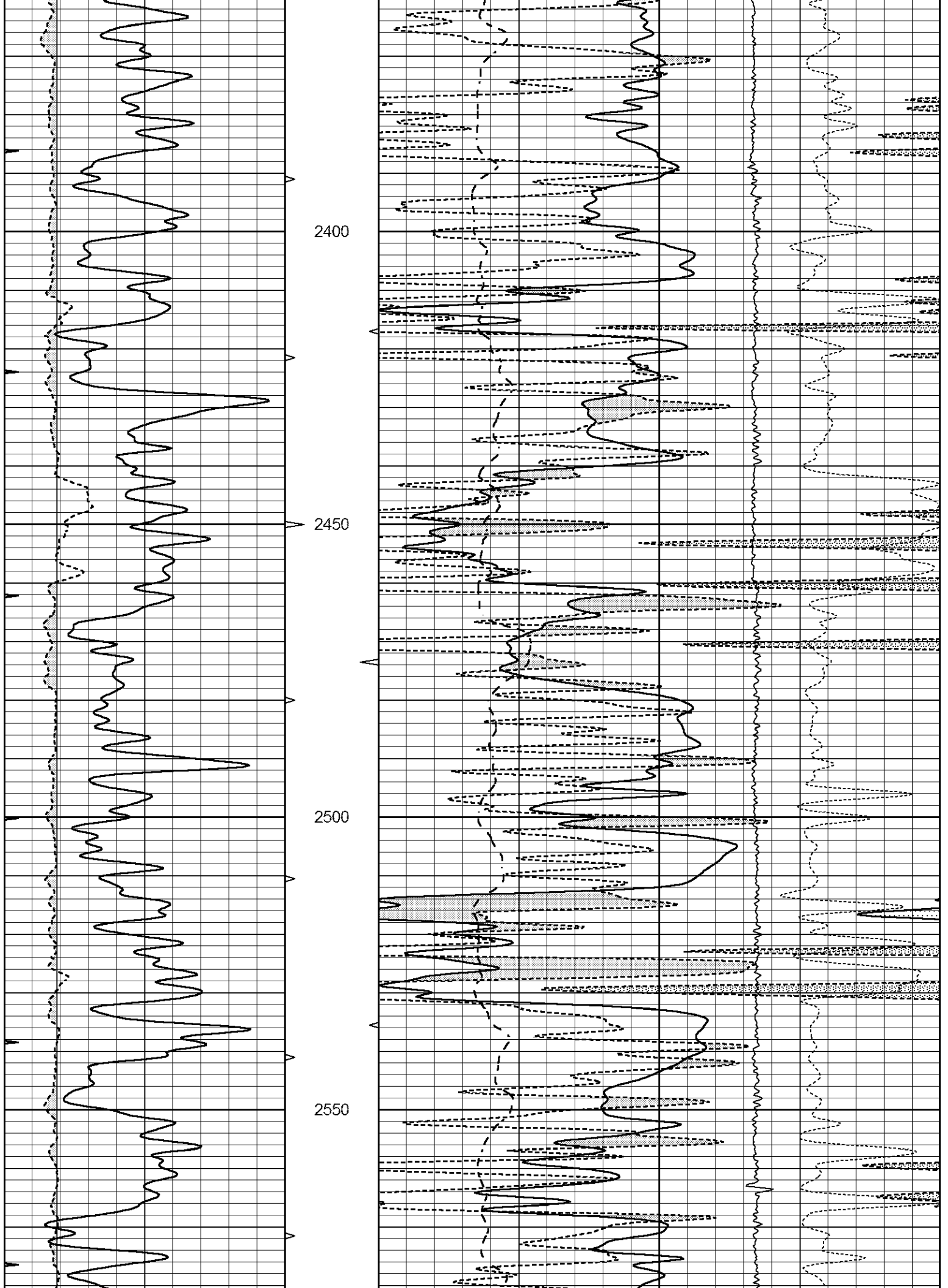


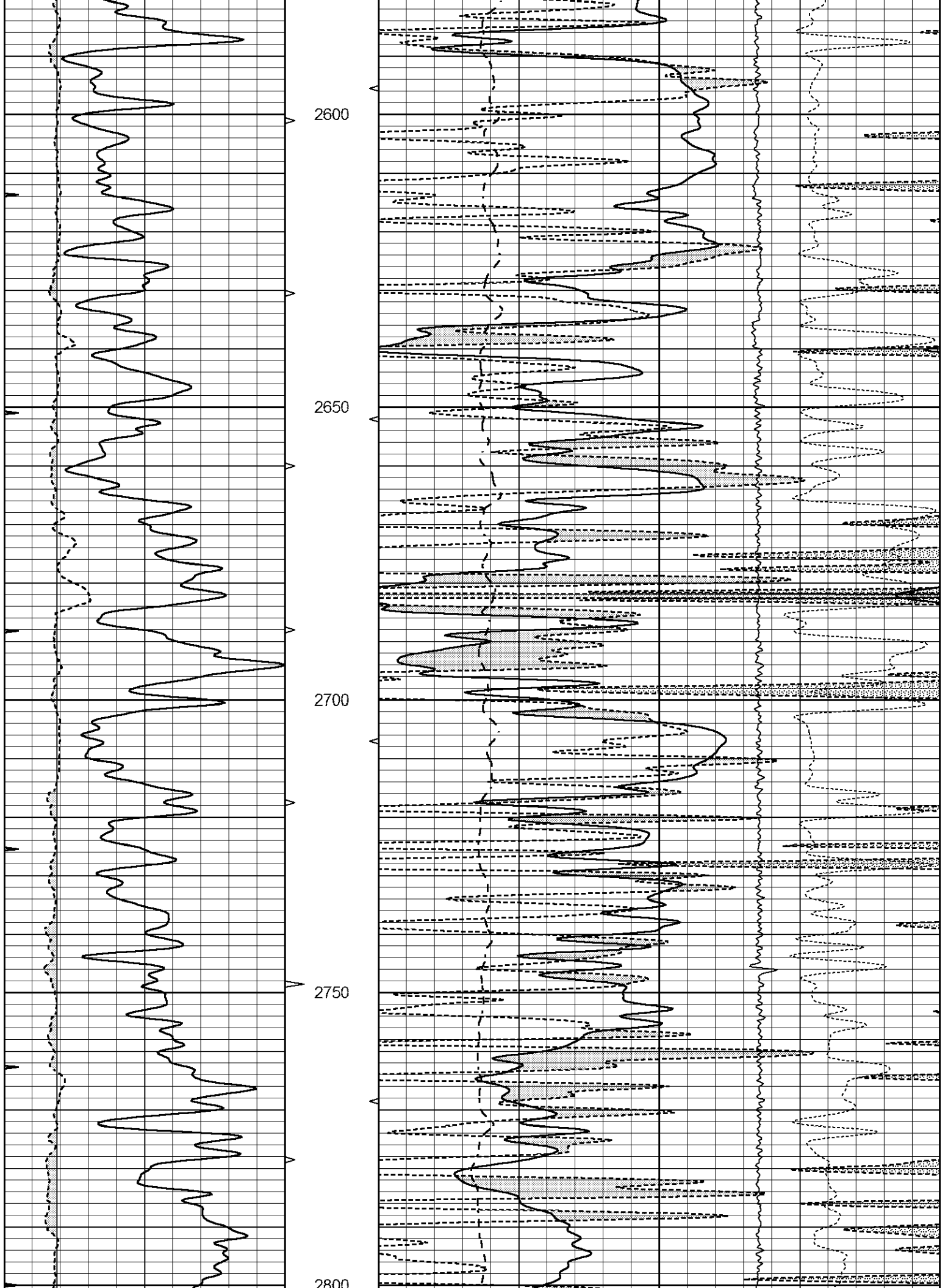


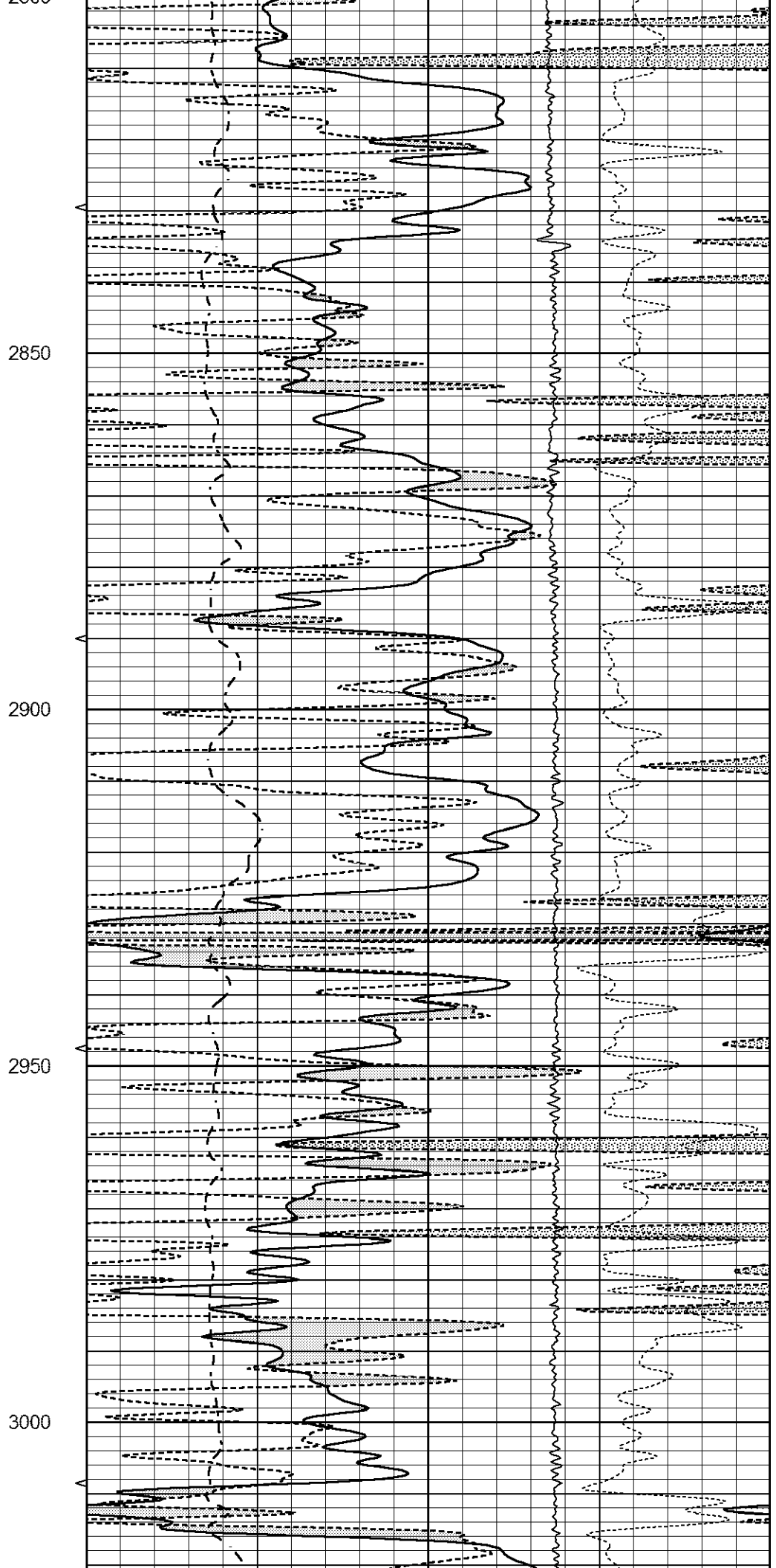
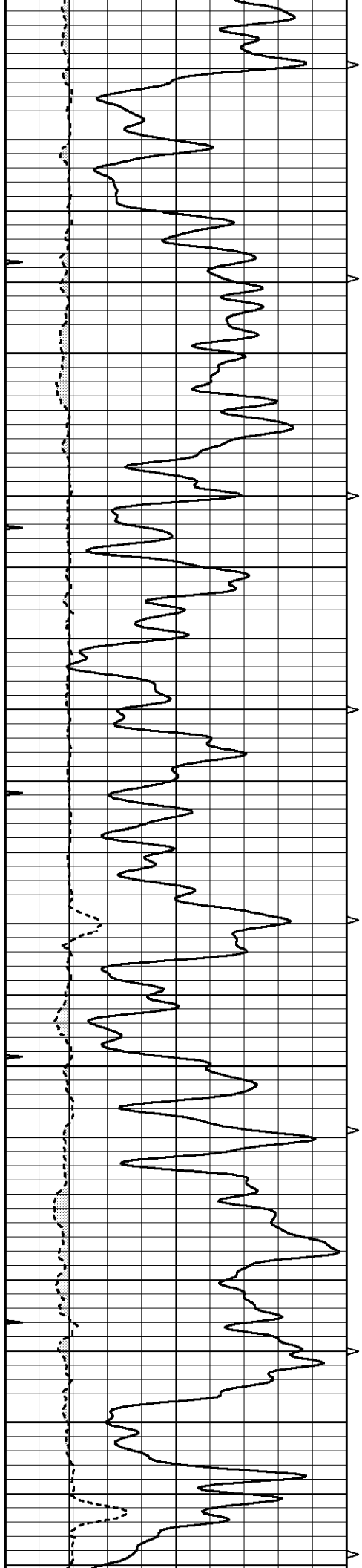


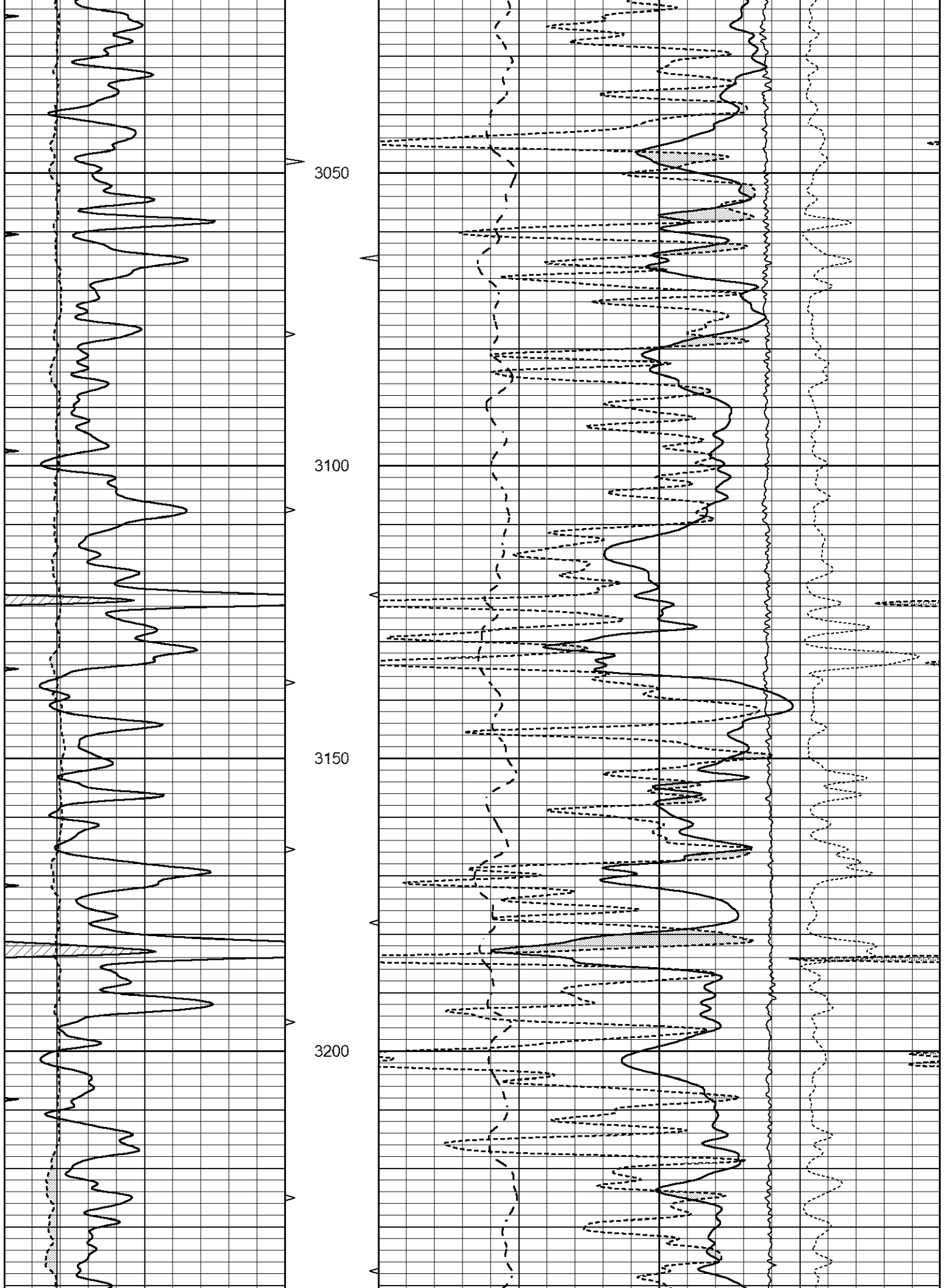


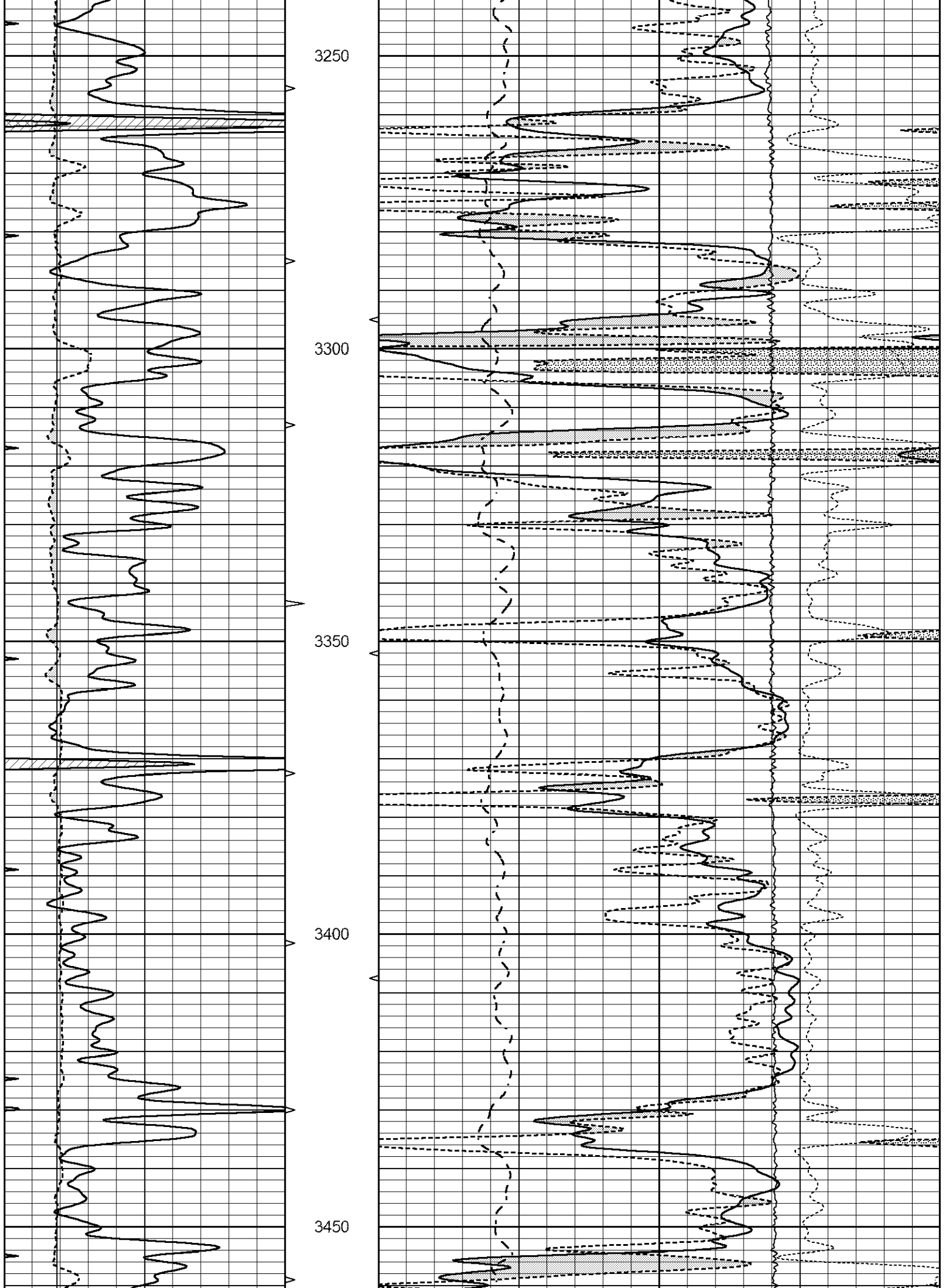


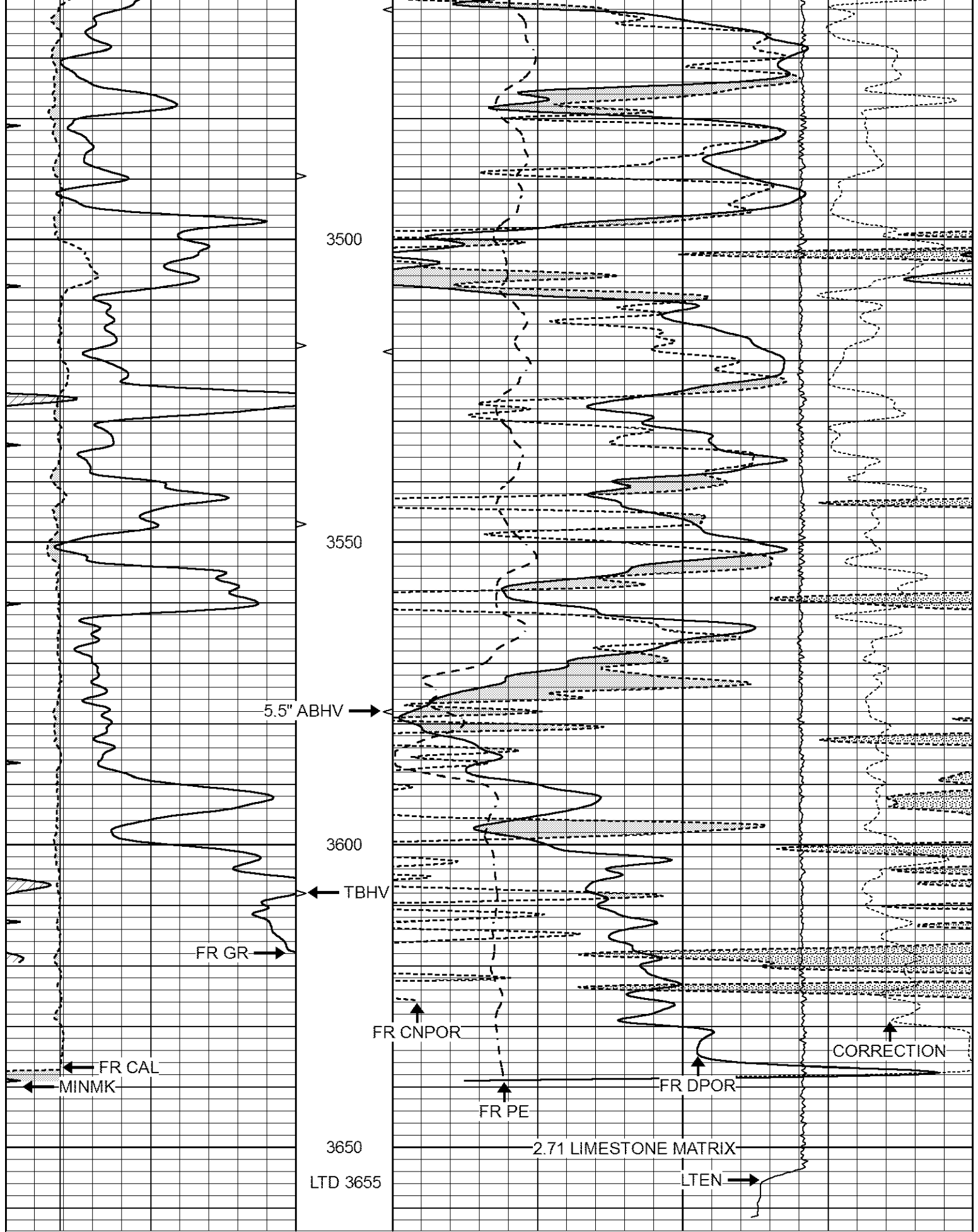




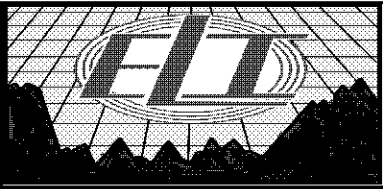








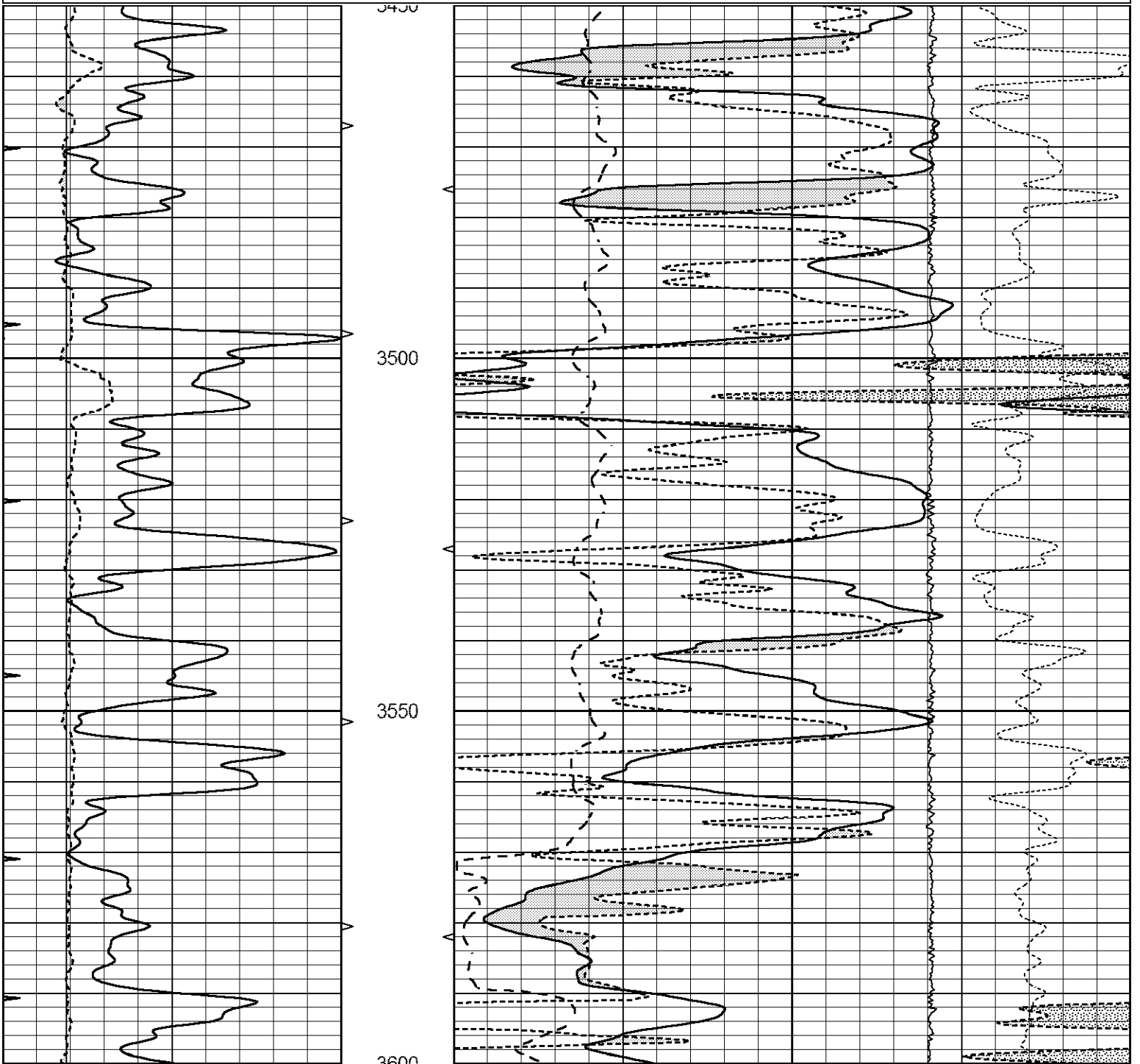
0	GAMMA RAY (GAPI)	150	ABHV	30	COMPENSATED DENSITY (pu)	-10			
6	CALIPER (in)	16	10 (ft3)	0	30	COMPENSATED NEUTRON (pu)	-10		
0	MINMK	20	TBHV	0	PE	10	-0.25	CORRECTION (g/cc)	0.25
								LTEN (lb)	5000

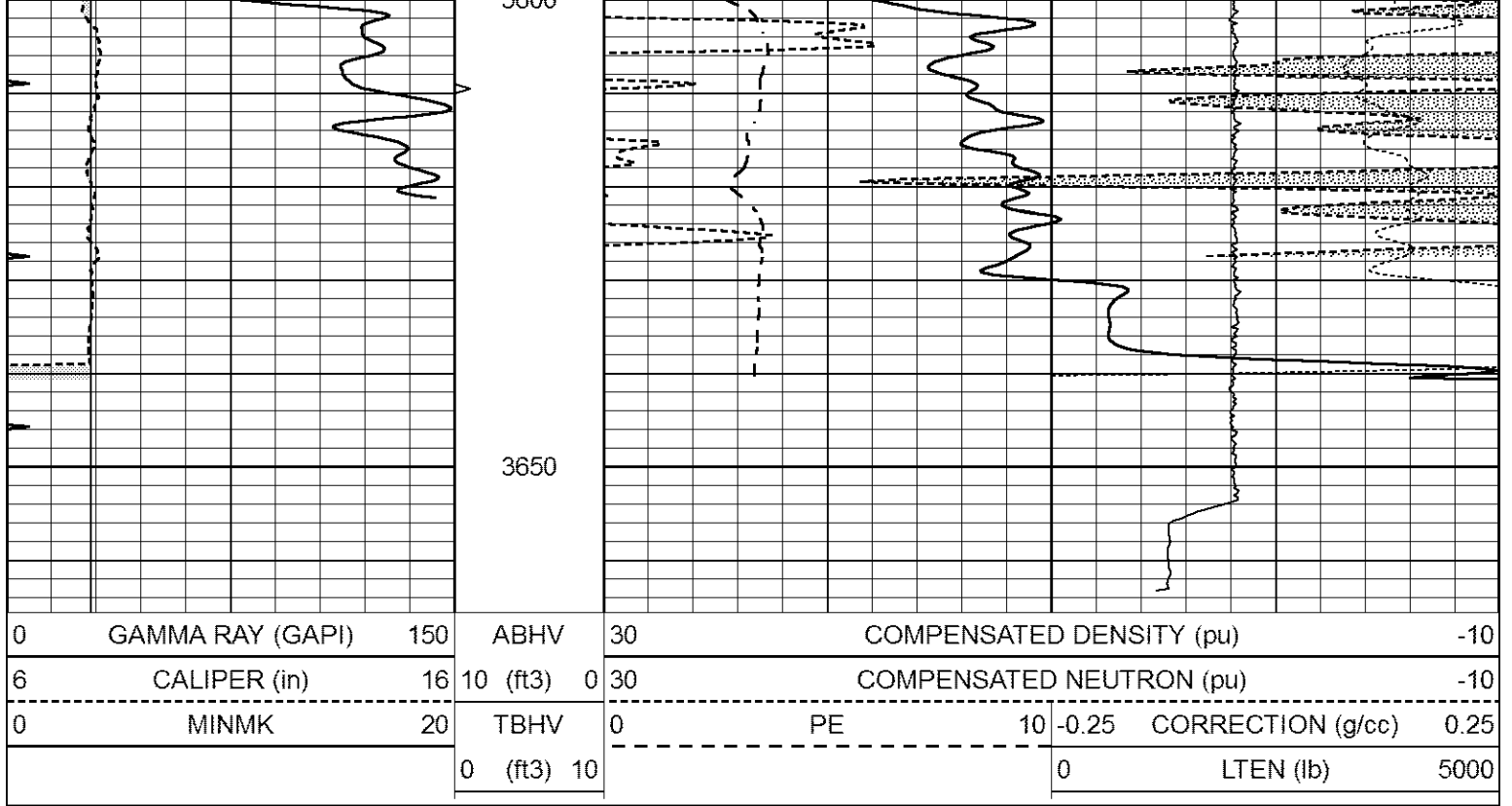


# REPEAT SECTION

Database File 7023pe.db  
 Dataset Pathname pass2R  
 Presentation Format \_ldt\_neu  
 Dataset Creation Wed Sep 28 03:16:34 2022  
 Charted by Depth in Feet scaled 1:240

0	GAMMA RAY (GAPI)	150	ABHV	30	COMPENSATED DENSITY (pu)	-10
6	CALIPER (in)	16	10 (ft3)	0	COMPENSATED NEUTRON (pu)	-10
0	MINMK	20	TBHV	0	PE	10 -0.25 CORRECTION (g/cc) 0.25
			0 (ft3)	10		0 LTEN (lb) 5000





Calibration Report

Database File 7023pe.db  
 Dataset Pathname pass3M  
 Dataset Creation Wed Sep 28 04:39:17 2022

Dual Induction Calibration Report

Serial-Model: FW1410-55-Probe  
 Surface Cal Performed: Thu Jun 30 01:48:00 2022  
 Downhole Cal Performed: Tue Feb 19 11:44:24 2019  
 After Survey Verification Performed: Tue Feb 19 11:44:27 2019

Surface Calibration

Loop:	Readings			V	References			Results	
	Air	Loop			Air	Loop	mmho/m	m	b
Deep	0.011	0.656			1.000	400.000	mmho/m	650.000	-3.000
Medium	-0.000	0.731			1.000	464.000	mmho/m	632.856	-7.500
Internal:	Readings			V	References			Results	
	Zero	Cal			Zero	Cal	mmho/m	m	b
Deep	0.007	0.649			0.000	400.000	mmho/m	623.784	-4.595
Medium	0.004	0.743			0.000	464.000	mmho/m	627.284	-2.251

Downhole Calibration

	Readings			V	References			Results	
	Zero	Cal			Zero	Cal	mmho/m	m'	b'
Deep	-0.824	395.917	mmho/m		-0.976	397.550	mmho/m	1.004	-0.149
Medium	3.565	471.327	mmho/m		3.468	471.590	mmho/m	1.001	-0.099
LL3		7.503	V			1500.000	Ohm-m		
		0.001	V			20.000	Ohm-m		
		-7.481	V			3745.000	mmho-m		

After Survey Verification

	Readings			V	Targets			Results	
	Zero	Cal			Zero	Cal	mmho/m	m'	b'

	Zero	Cal		Zero	Cal		Zero	Cal
Deep	0.000	0.000	mmho/m	-0.824	395.917	mmho/m	1.000	0.000
Medium	0.000	0.000	mmho/m	3.565	471.327	mmho/m	1.000	0.000
LL3		0.000	Ohm-m		1500.000	Ohm-m		
		0.000	Ohm-m		20.000	Ohm-m		
		0.000	mmho-m		3745.000	mmho-m		

Litho Density Calibration Report  
 Serial: 005 Model: Litho\_Ver3

Master Calibration

Performed Fri May 13 13:54:56 2011

	Background	Magnesium	Aluminum	Aluminum+Fe	
Window 1	1363.1	46477.8	11515.9	9589.9	cps
Window 2	1239.4	36488.4	9270.1	7998.9	cps
Window 3	1044.3	20488.1	5500.7	4913.3	cps
Window 4	315.7	358.7	321.5	319.5	cps
Long Space	0.0	35249.0	8030.7	6759.4	cps
Short Space	1.4	9675.7	6523.4	5391.9	cps
Rho		1.7100	2.5900	0.0000	g/cc
Pe		2.0000	2.7500	5.7900	
Rib Angle	: 45.1	Rib Slope	: 1.003	Density/Spine Ratio	: 0.575
Spine Angle	: 75.1	Spine Slope	: 3.752	Spine Intercept	: -24.0

Before Survey Verification

Performed Wed Dec 31 18:00:00 1969

Window 1	0.0	0.0	0.0	0.0	cps
Window 2	0.0	0.0	0.0	0.0	cps
Window 3	0.0	0.0	0.0	0.0	cps
Window 4	0.0	0.0	0.0	0.0	cps
Long Space	0.0	0.0	0.0	0.0	cps
Short Space	0.0	0.0	0.0	0.0	cps
Measured Rho		0.0000	0.0000	0.0000	g/cc
Measured Correction		0.0000	0.0000	0.0000	g/cc
Measured Pe			0.0000	0.0000	

After Survey Verification

Performed Wed Dec 31 18:00:00 1969

Window 1	0.0	0.0	0.0	0.0	cps
Window 2	0.0	0.0	0.0	0.0	cps
Window 3	0.0	0.0	0.0	0.0	cps
Window 4	0.0	0.0	0.0	0.0	cps
Long Space	0.0	0.0	0.0	0.0	cps
Short Space	0.0	0.0	0.0	0.0	cps
Measured Rho		0.0000	0.0000	0.0000	g/cc
Measured Correction		0.0000	0.0000	0.0000	g/cc
Measured Pe			0.0000	0.0000	

Compensated Neutron Calibration Report

Serial Number: 080621PMC  
 Tool Model: NABORS

PRE-SURVEY VERIFICATION

Detector	Readings	Measured	Target
Short Space		cps	

Long Space

cps

pu

pu

POST-SURVEY VERIFICATION

Detector

Readings

Measured

Target

Short Space

cps

Long Space

cps

pu

pu

Gamma Ray Calibration Report

Serial Number:

7

Tool Model:

Probe1

Performed:

Thu May 26 08:56:46 2022

Calibrator Value:

1.0

GAPI

Background Reading:

0.0

cps

Calibrator Reading:

1.0

cps

Sensitivity:

0.5500

GAPI/cps