



MICRO LOG

Company SATCHELL CREEK PETROLEUM, LLC
 Well CATHEDRAL #A-3
 Field CATHARINE EAST
 County ELLIS
 State KANSAS

Company SATCHELL CREEK PETROLEUM, LLC
 Well CATHEDRAL #A-3
 Field CATHARINE EAST
 County ELLIS State KANSAS

Location: API #: 15-051-27053-0000
 330' FNL & 915' FEL
 E2 - NW - NE - NE
 SEC 11 TWP 13S RGE 17W
 Permanent Datum GROUND LEVEL Elevation 2033
 Log Measured From KELLY BUSHING 6' A.G.L
 Drilling Measured From KELLY BUSHING
 Other Services CDL/CNL/PE DIL/SON
 Elevation K.B. 2039 D.F. 2037 G.L. 2033

Date	9/28/22
Run Number	TWO
Depth Driller	3655
Depth Logger	3655
Bottom Logged Interval	3639
Top Log Interval	200
Casing Driller	8 5/8" @ 210
Casing Logger	226
Bit Size	7 7/8
Type Fluid in Hole	CHEMICAL MUD
Density / Viscosity	9.0/64
PH / Fluid Loss	9.0/10.0
Source of Sample	FLOWLINE
Rm @ Meas. Temp	.800 @ 80F
Rmt @ Meas. Temp	.600 @ 80F
Rmc @ Meas. Temp	.960 @ 80F
Source of Rmf / Rmc	MEASUREMENT
Rm @ BHT	.566 @ 113F
Time Circulation Stopped	6 HOURS
Time Logger on Bottom	4:00 A.M.
Maximum Recorded Temperature	113F
Equipment Number	3802
Location	HAYS, KANSAS
Recorded By	COLE ROBBEN
Witnessed By	CHAD COUNTS

<<< Fold Here >>>

All interpretations are opinions based on inferences from electrical or other measurements and we cannot and do not guarantee the accuracy or correctness of any interpretation, and we shall not, except in the case of gross or willful negligence on our part, be liable or responsible for any loss, costs, damages, or expenses incurred or sustained by anyone resulting from any interpretation made by any of our officers, agents or employees. These interpretations are also subject to our general terms and conditions set out in our current Price Schedule.

Comments

THANK YOU FOR USING ELI WIRELINE SERVICES, HAYS, KS. (785) 628-6395

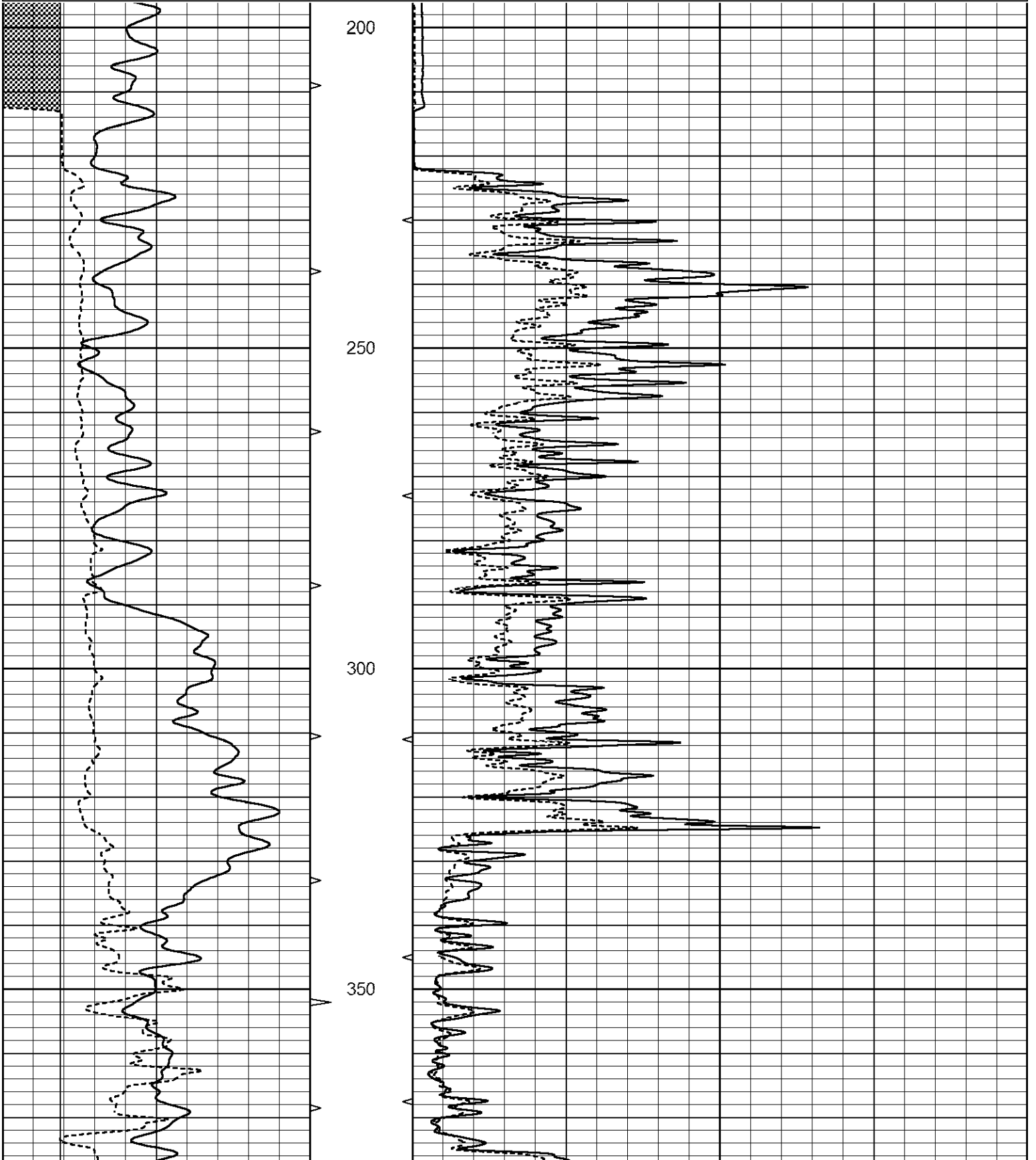
DIRECTIONS:
 FROM VICTORIA/CATHARINE BLACKTOP INTERSECTION, 1 MILE WEST, 1/2 MILE NORTH,
 WEST INTO

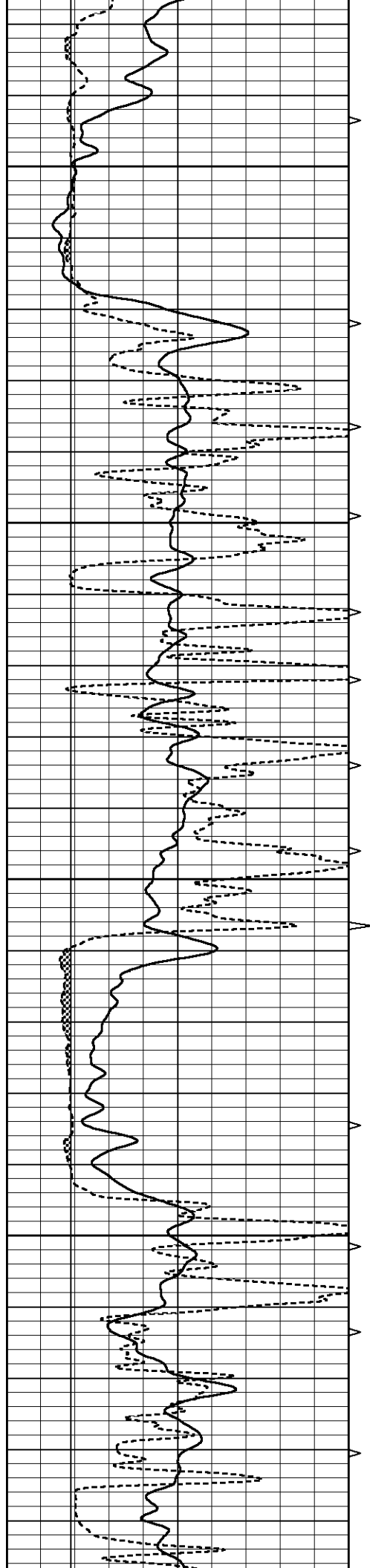


MAIN SECTION

Database File 7023pe.db
 Dataset Pathname pass6.4
 Presentation Format _micro
 Dataset Creation Wed Sep 28 06:15:56 2022
 Charted by Depth in Feet scaled 1:240

0	GAMMA RAY (GAPI)	150	ABHV	0	MEL1.5 (Ohm-m)	40
6	CALIPER (in)	16	10 (ft3)	0 0	MEL2.0 (Ohm-m)	40
			TBHV			
			0 (ft3)	10		



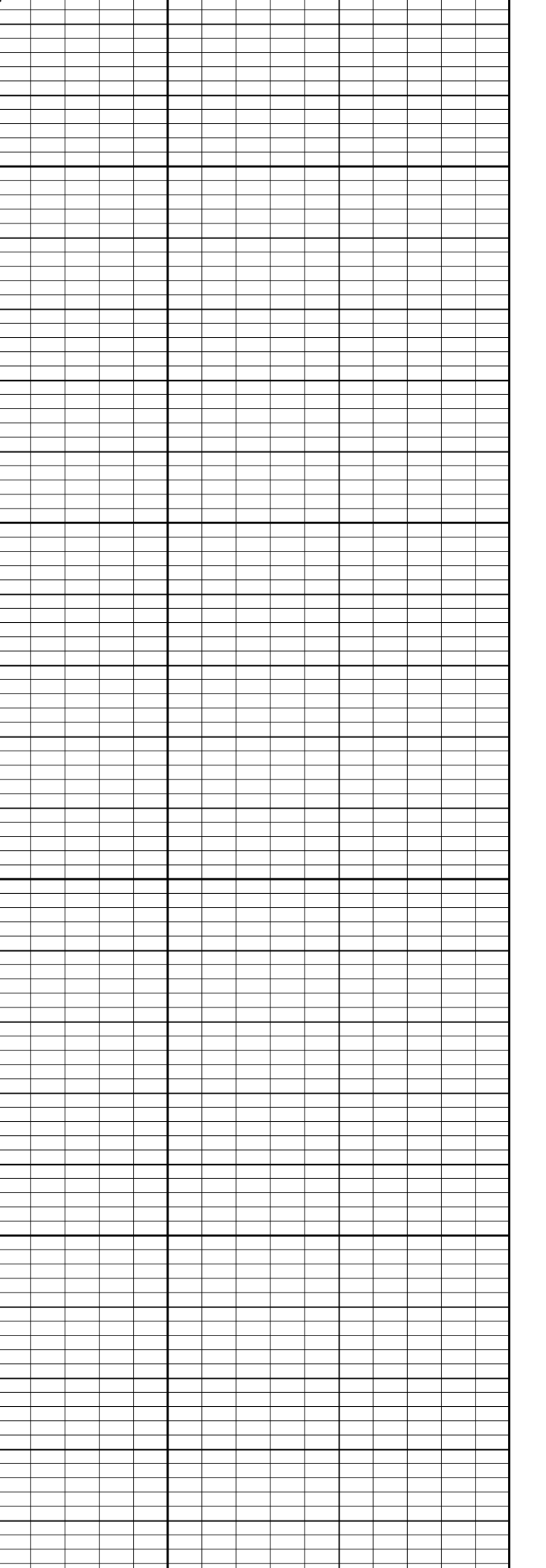
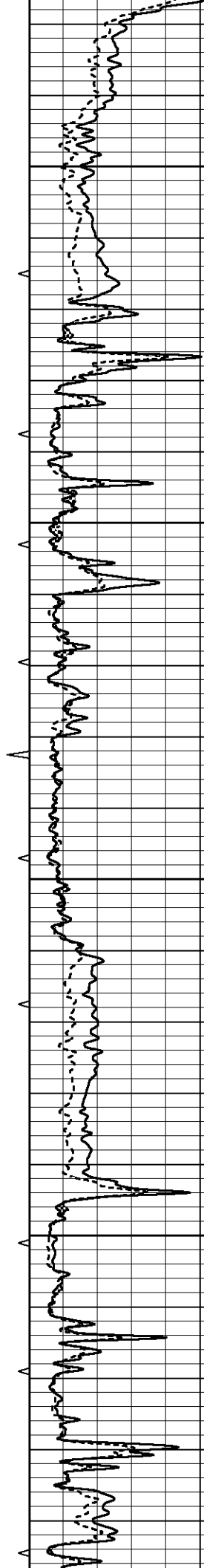


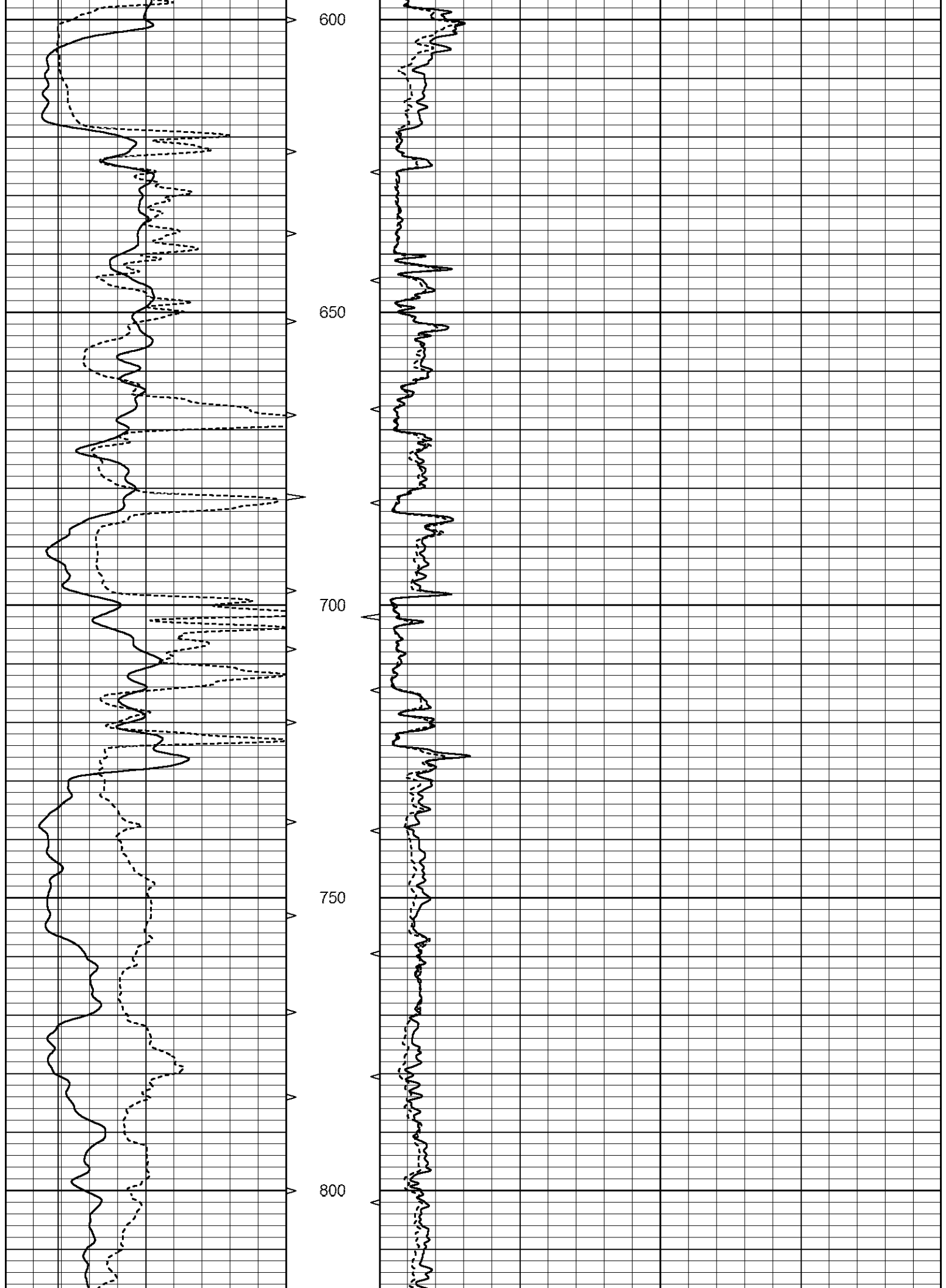
400

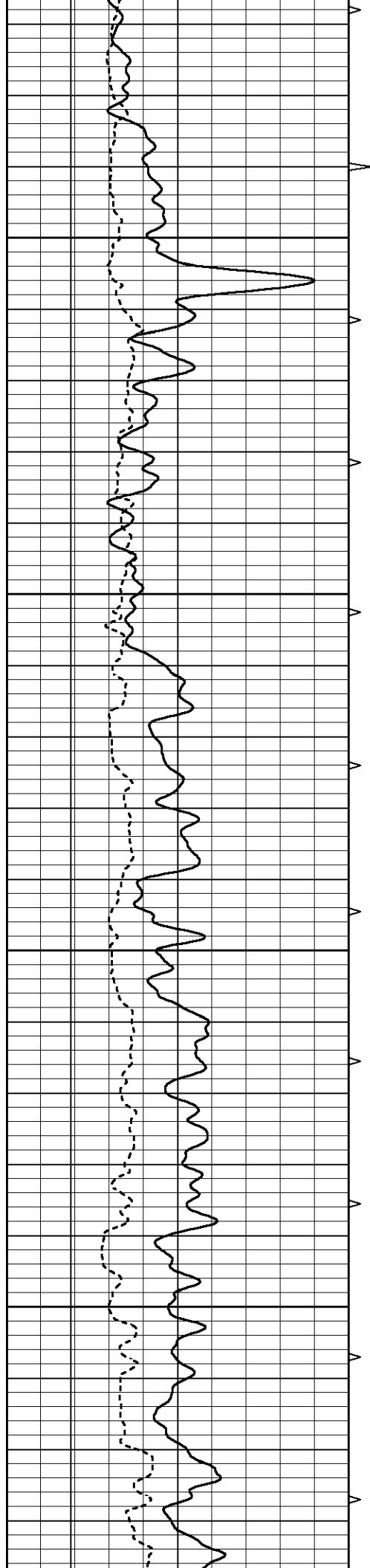
450

500

550





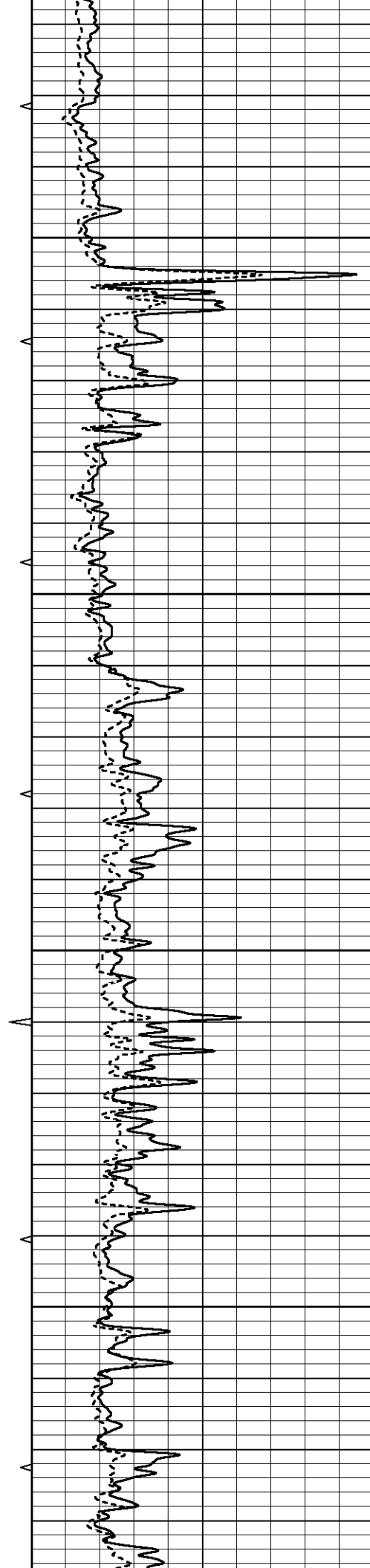


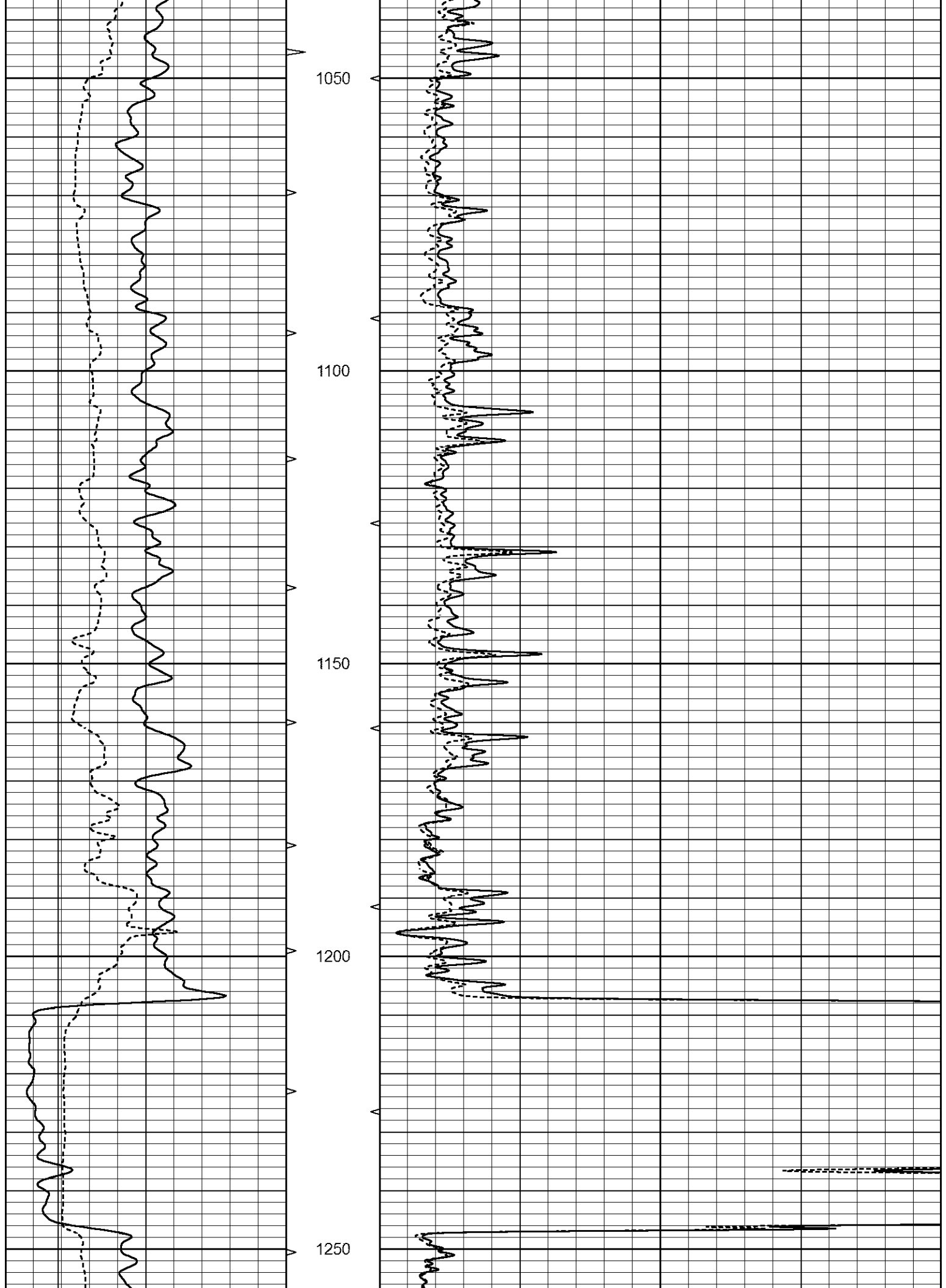
850

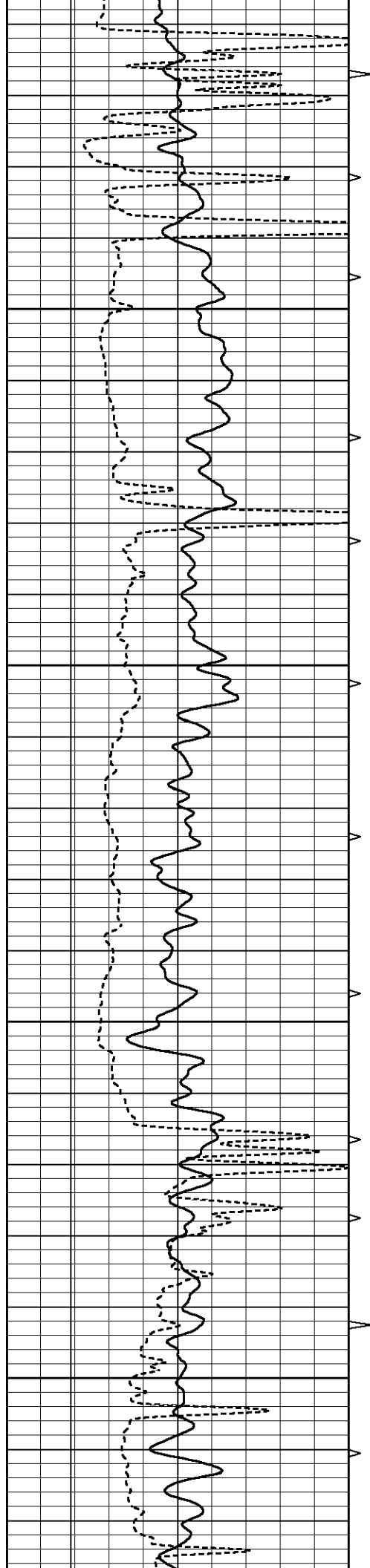
900

950

1000





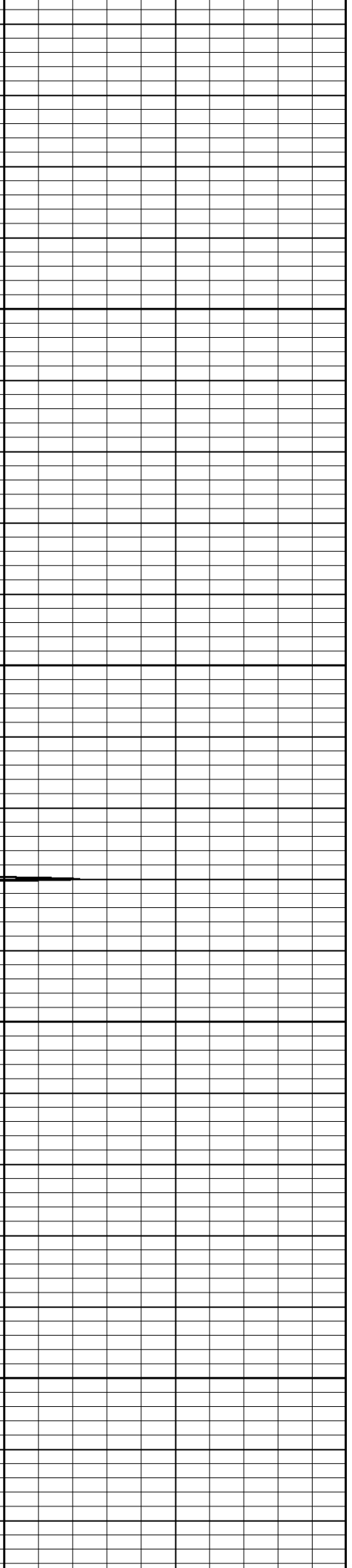
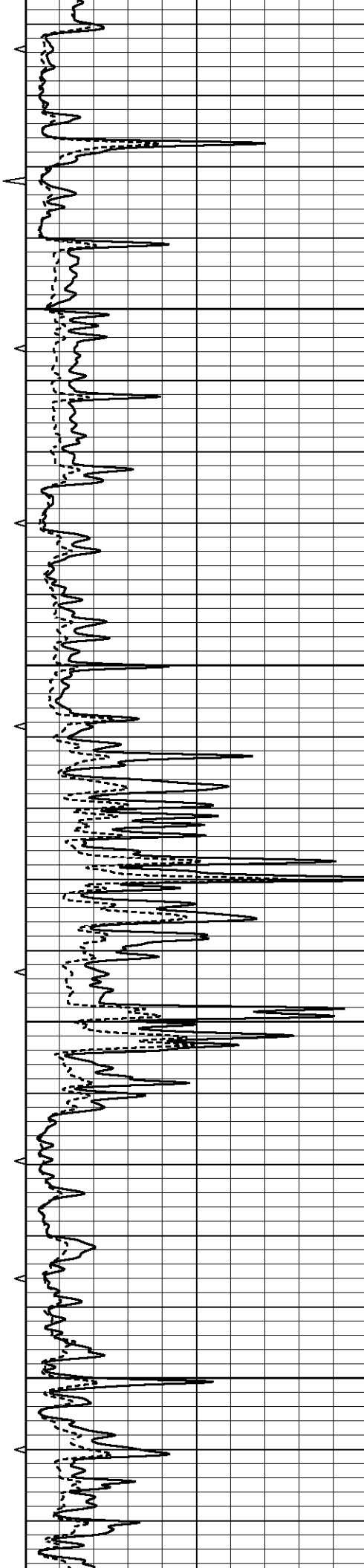


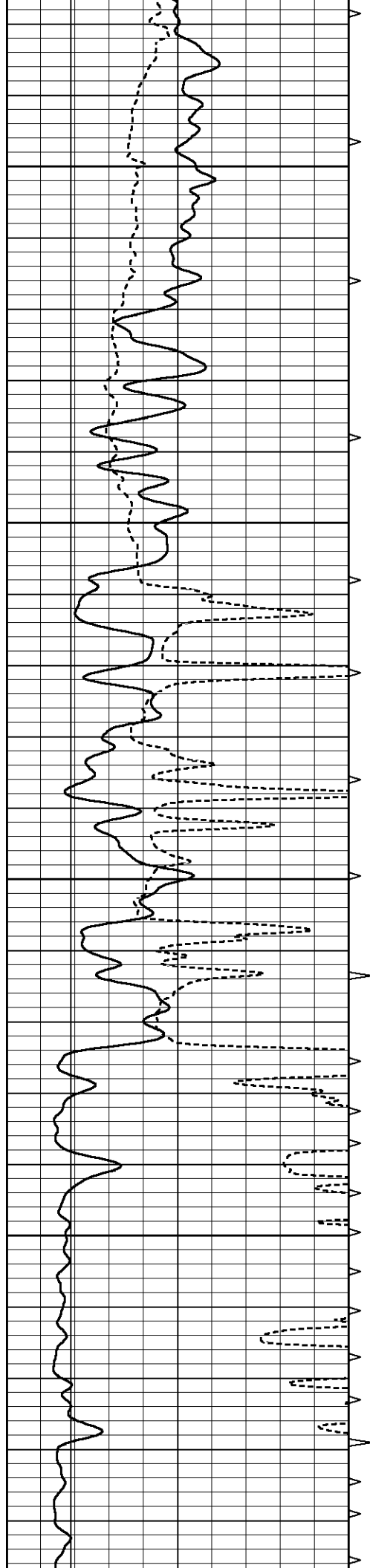
1300

1350

1400

1450



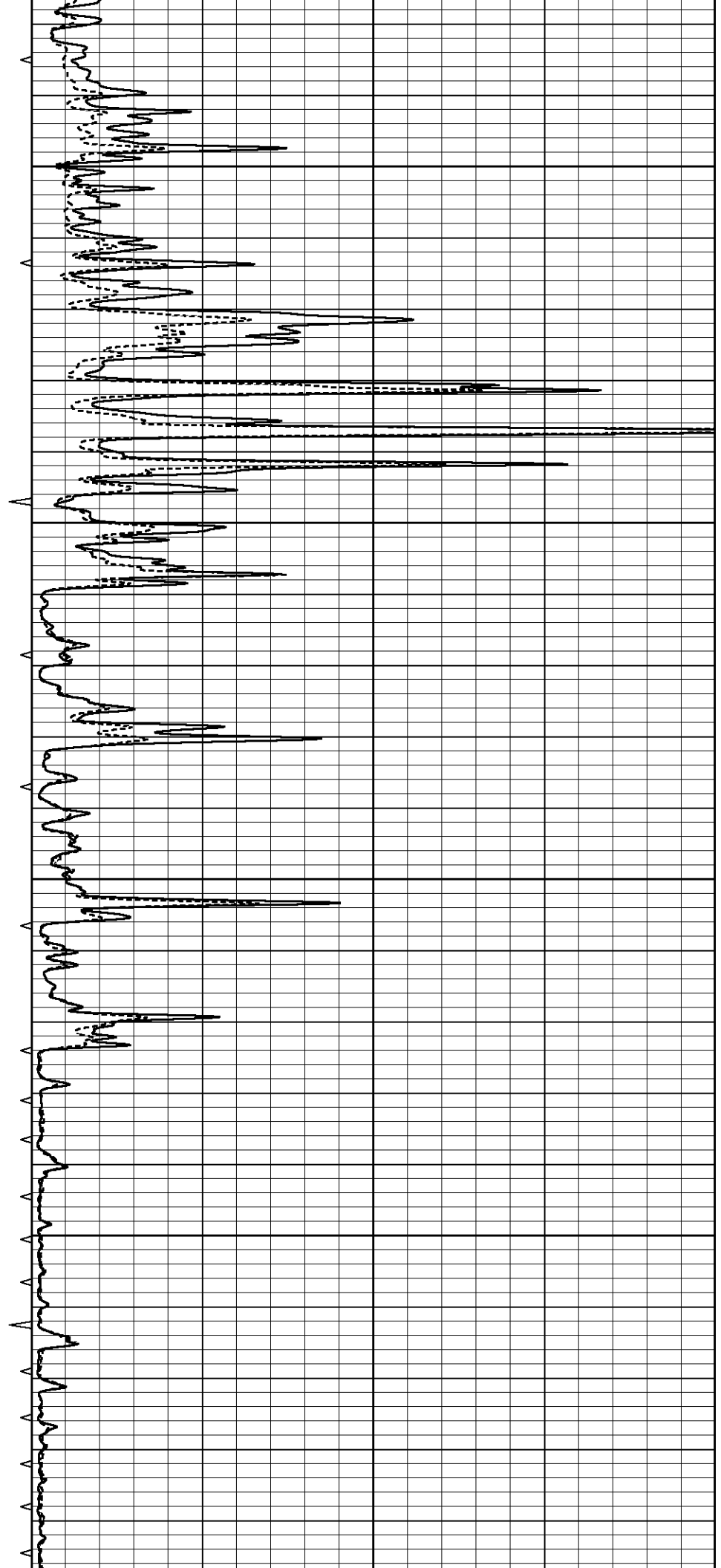


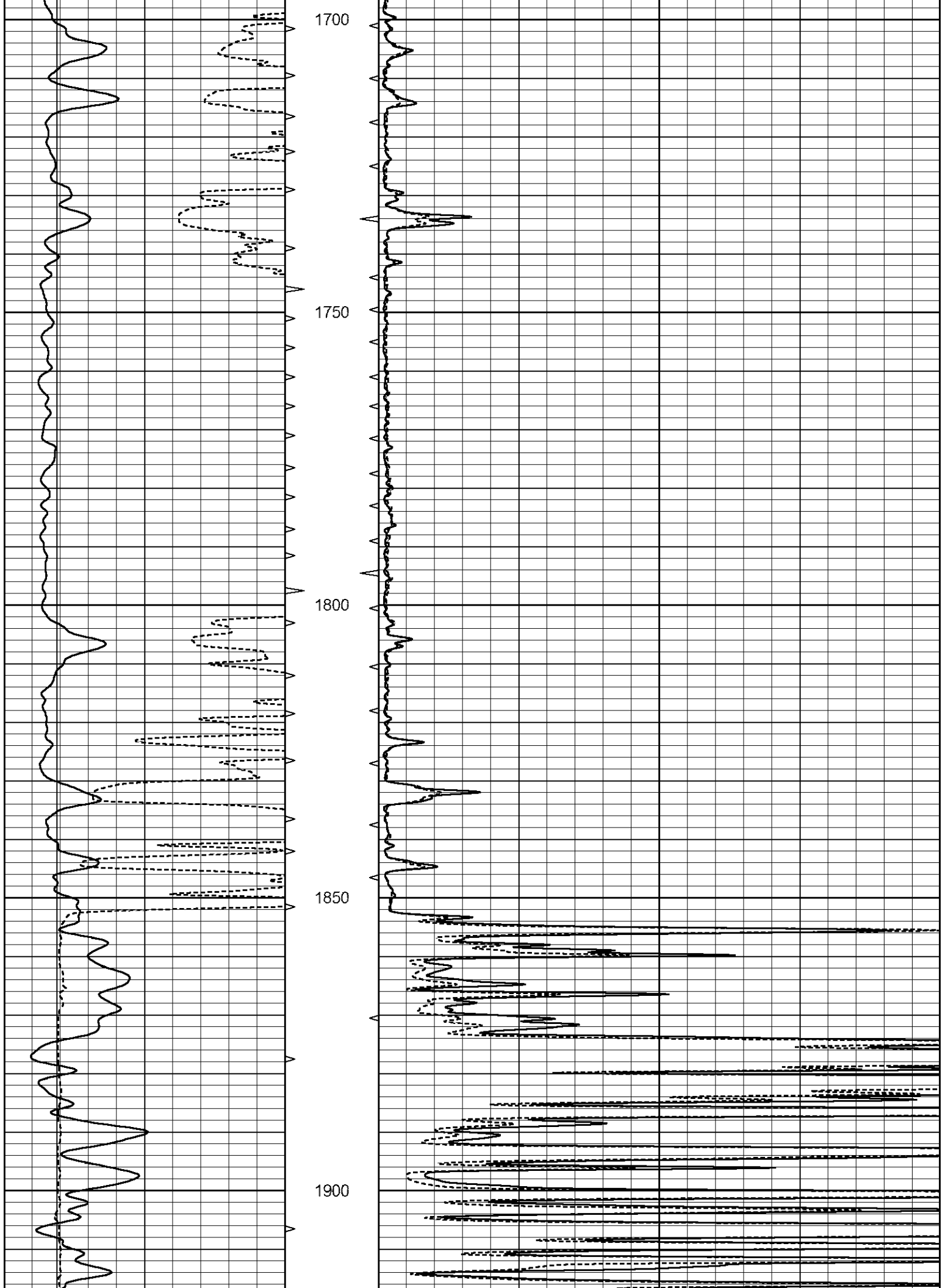
1500

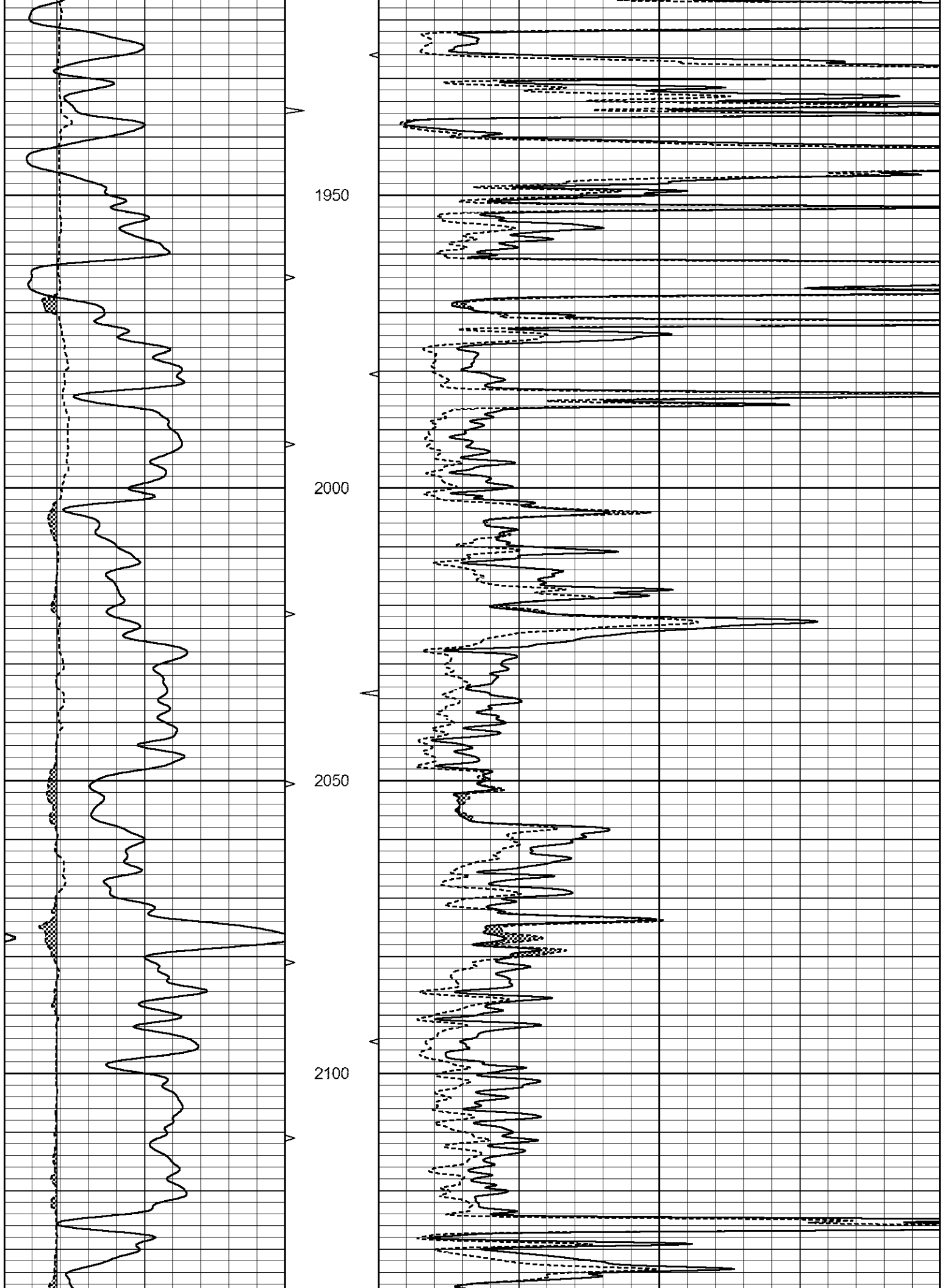
1550

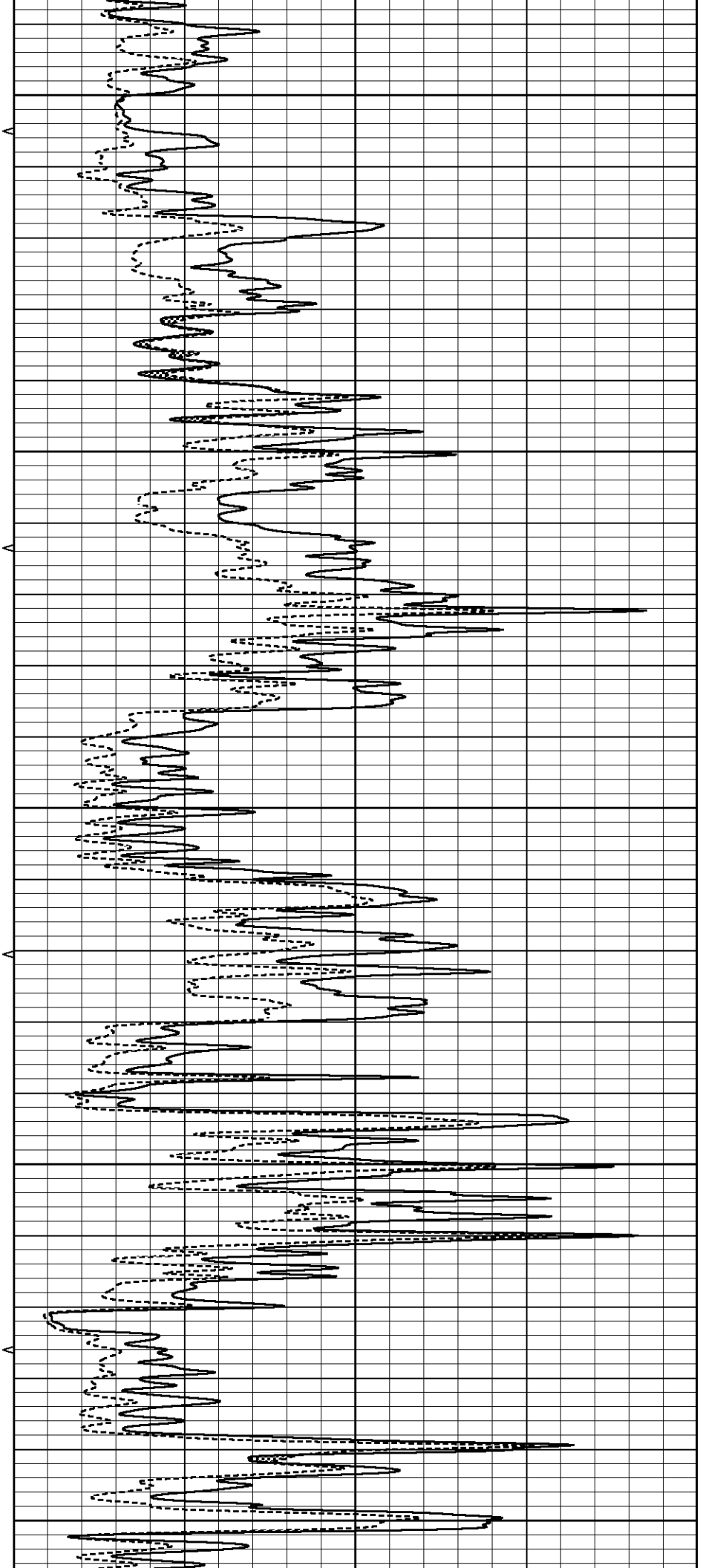
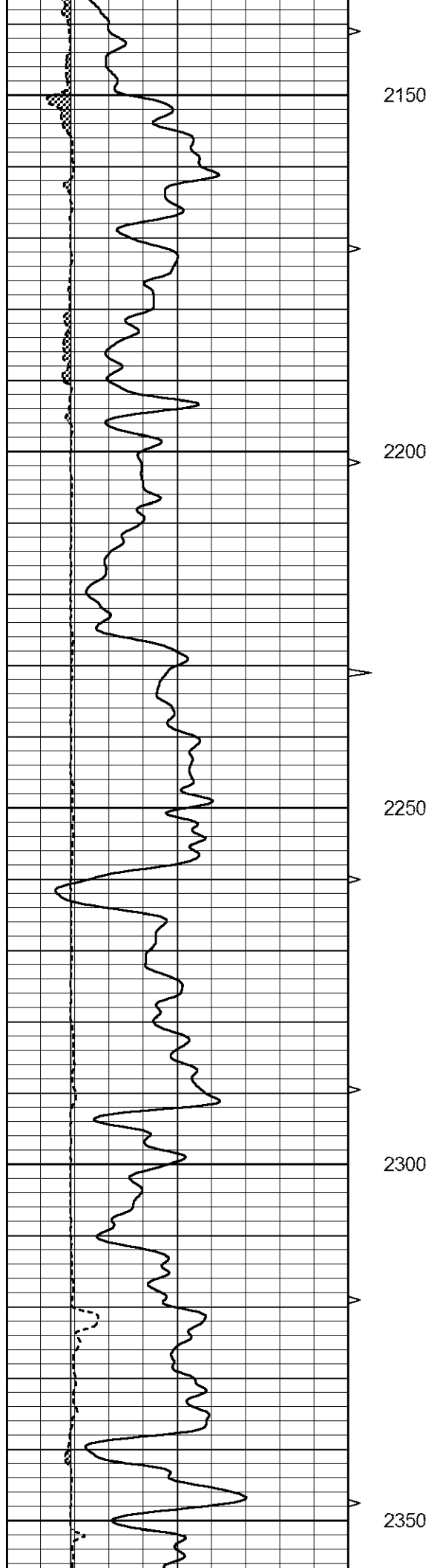
1600

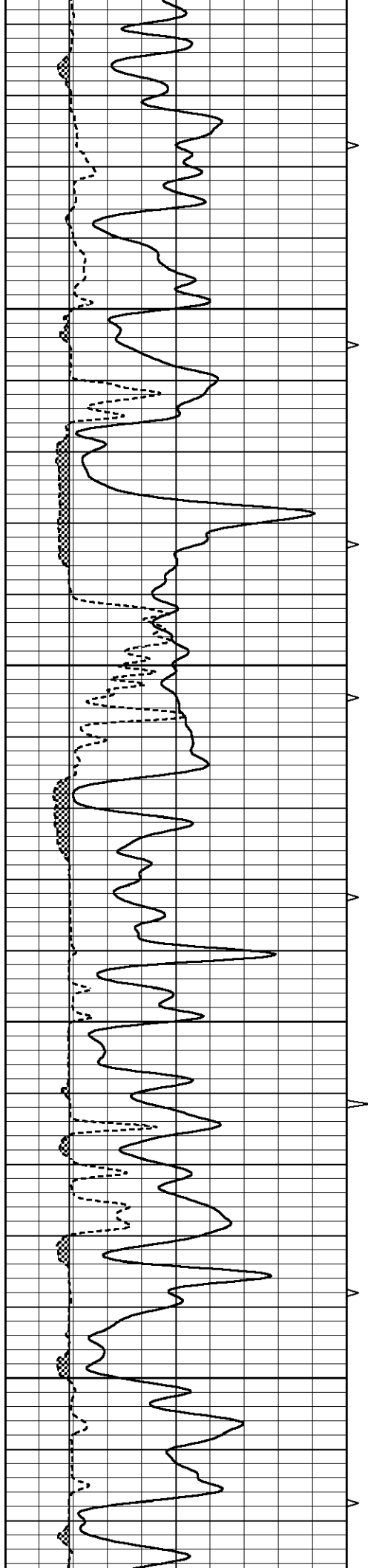
1650









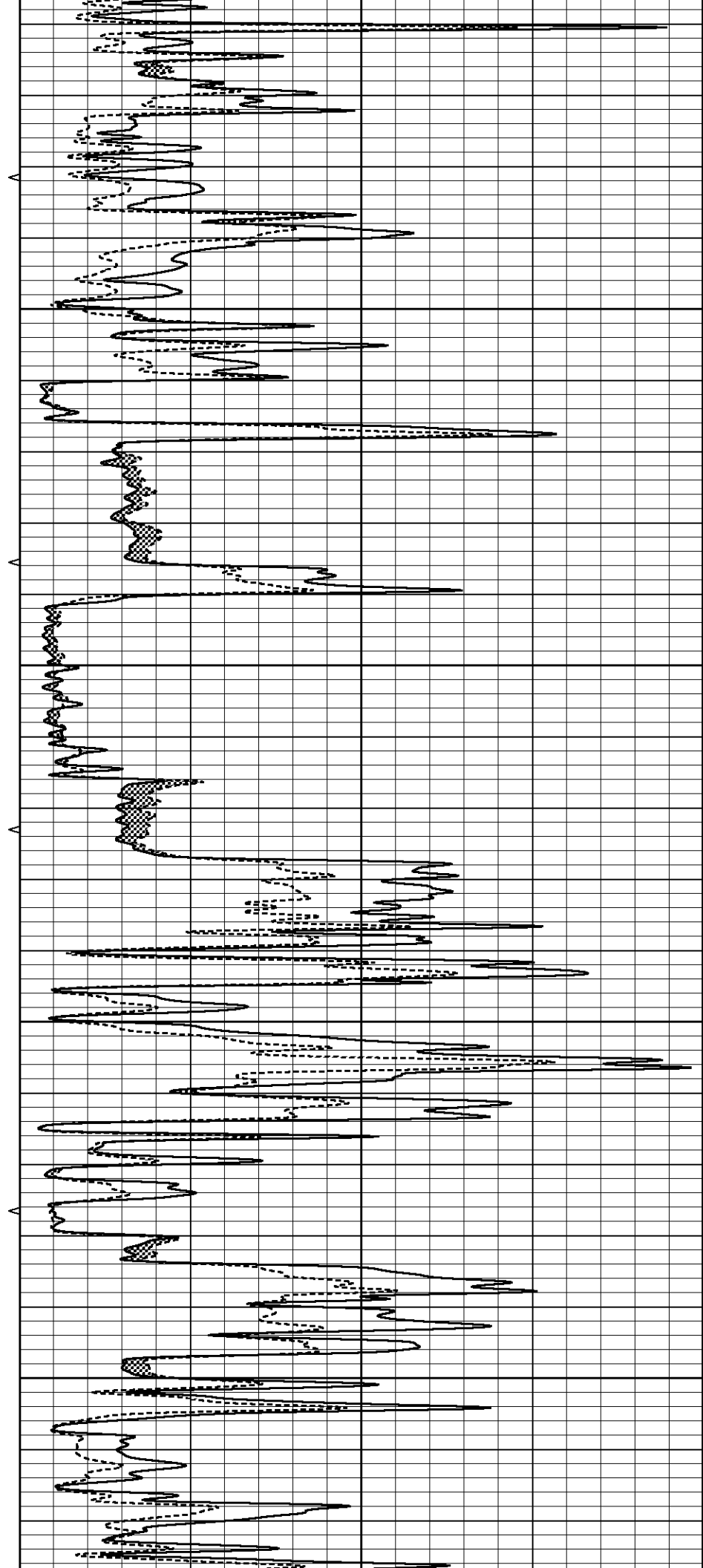


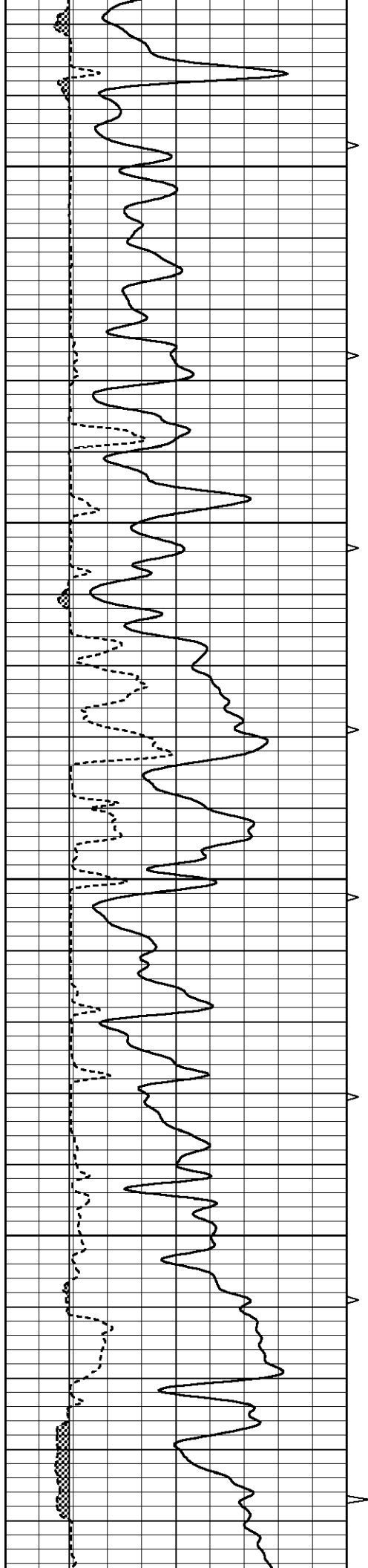
2400

2450

2500

2550



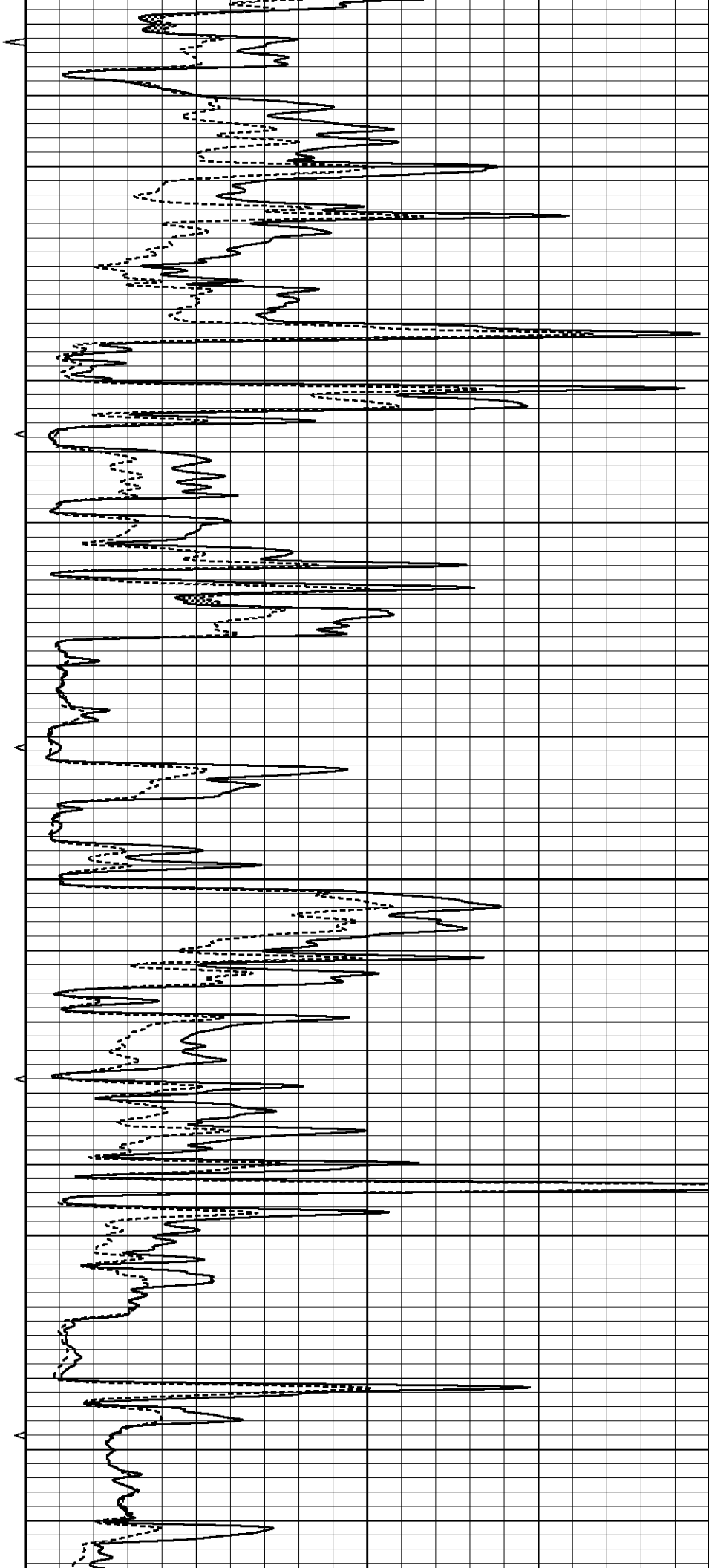


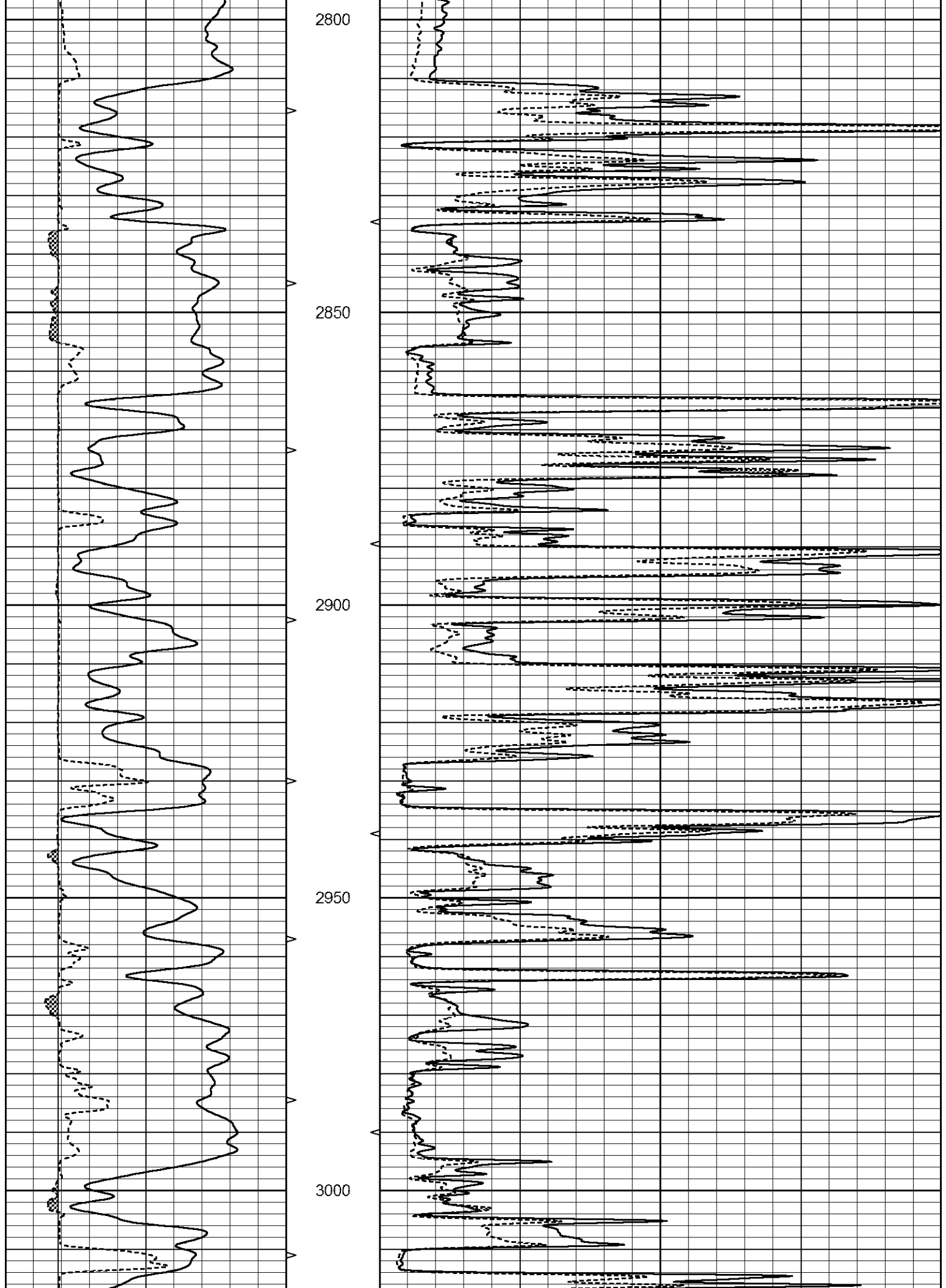
2600

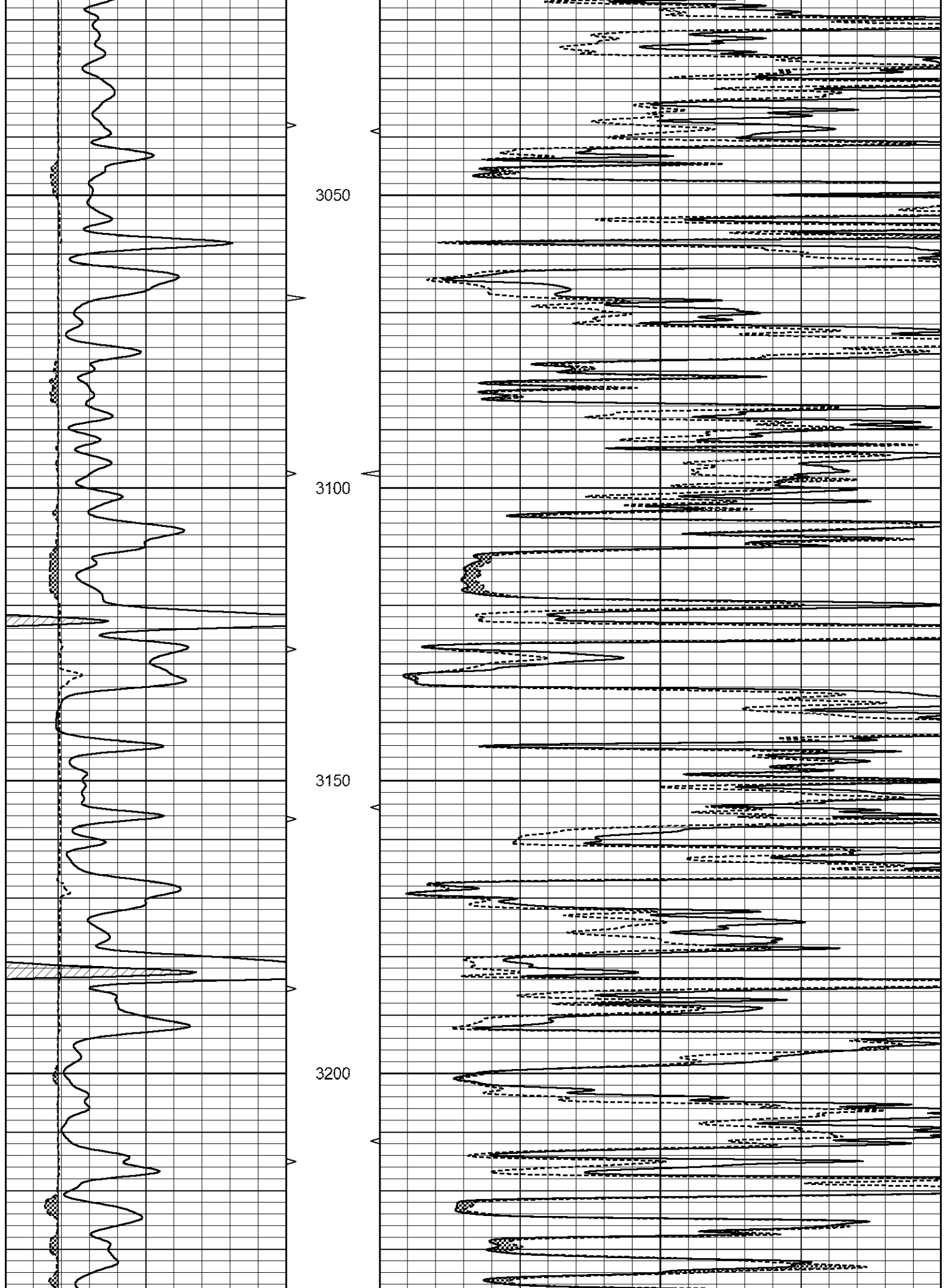
2650

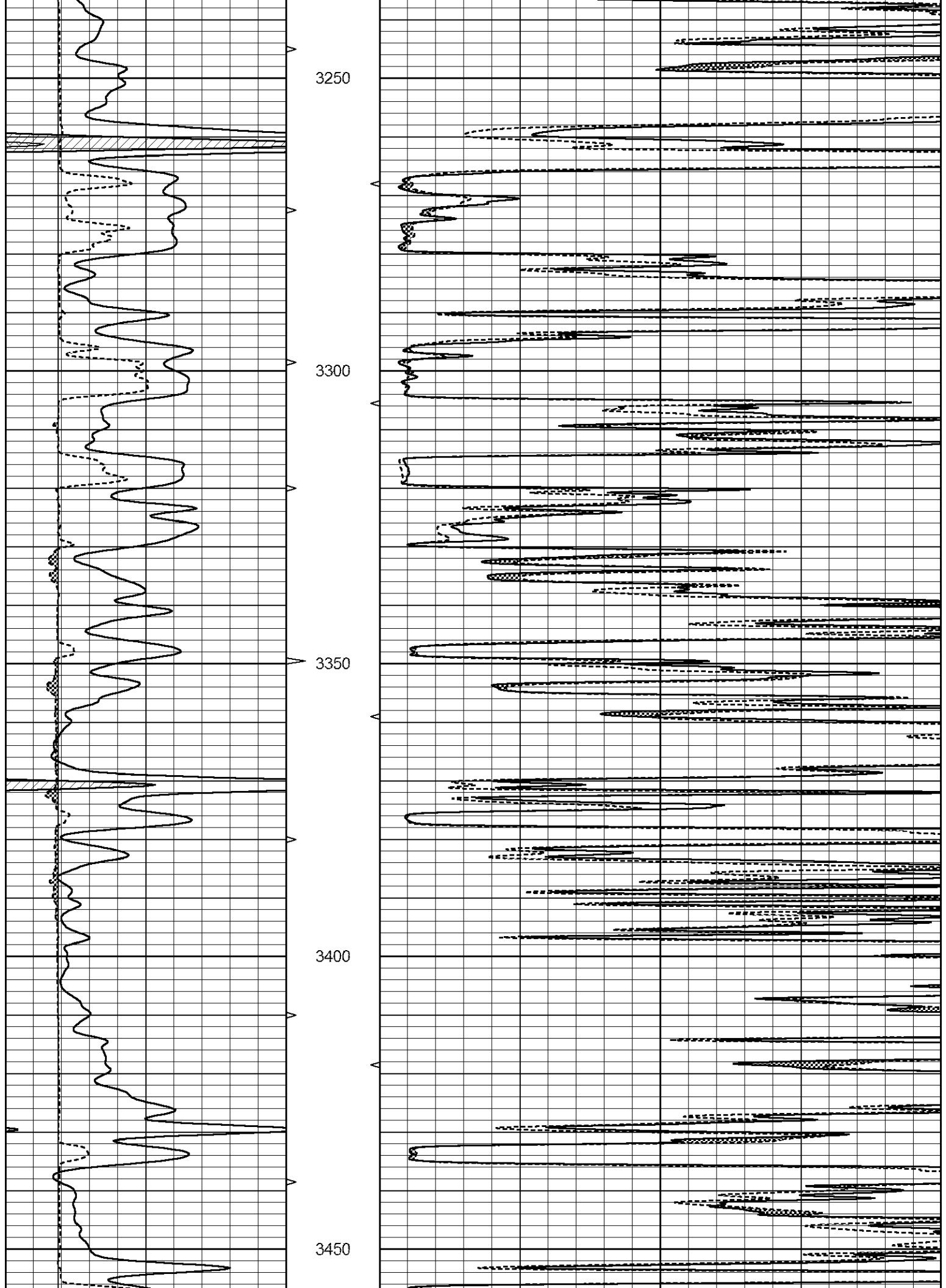
2700

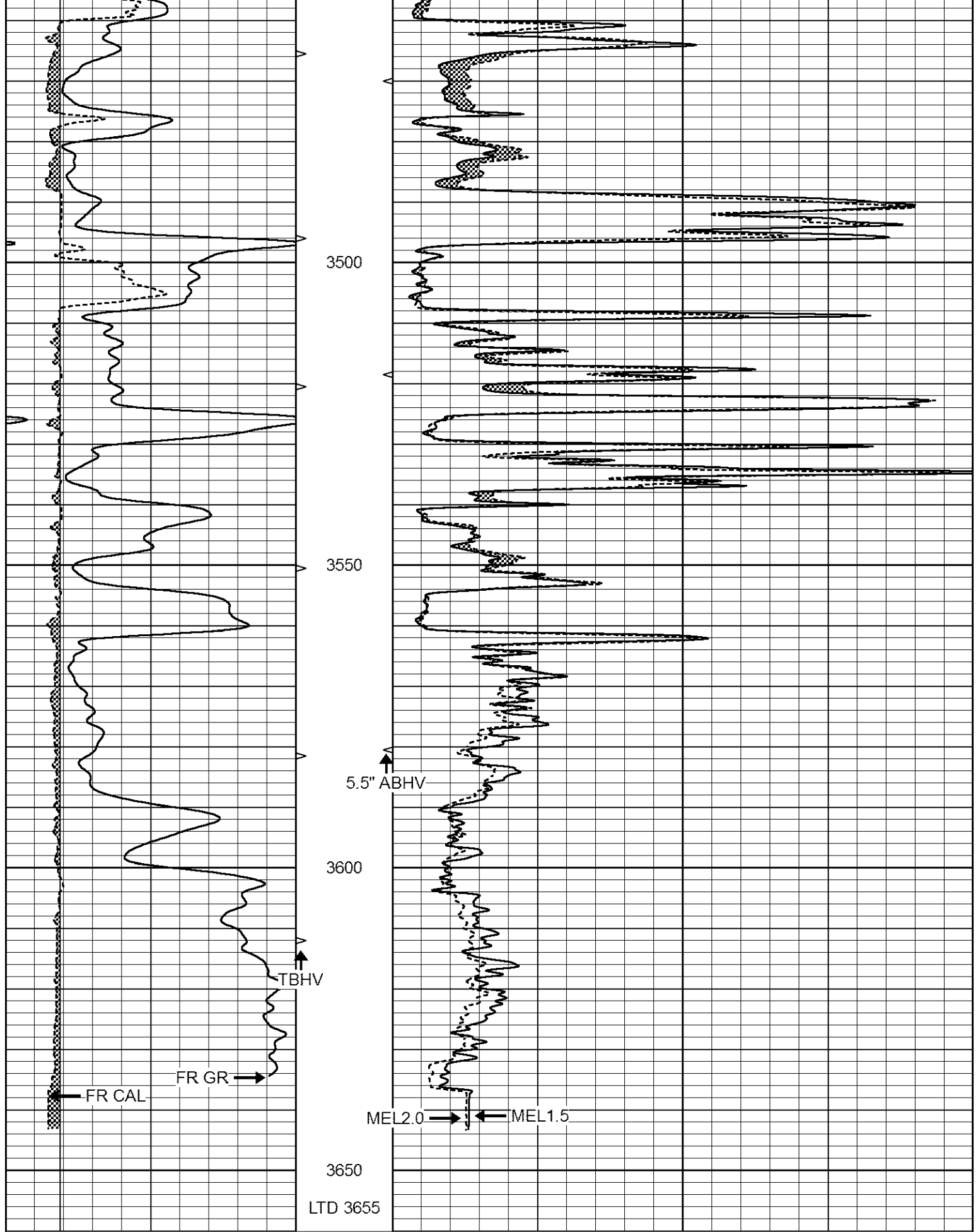
2750





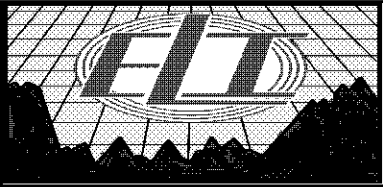






0	GAMMA RAY (GAPI)	150	ABHV	0	MEL1.5 (Ohm-m)	40
6	CALIPER (in)	16	10 (ft3)	0 0	MEL2.0 (Ohm-m)	40

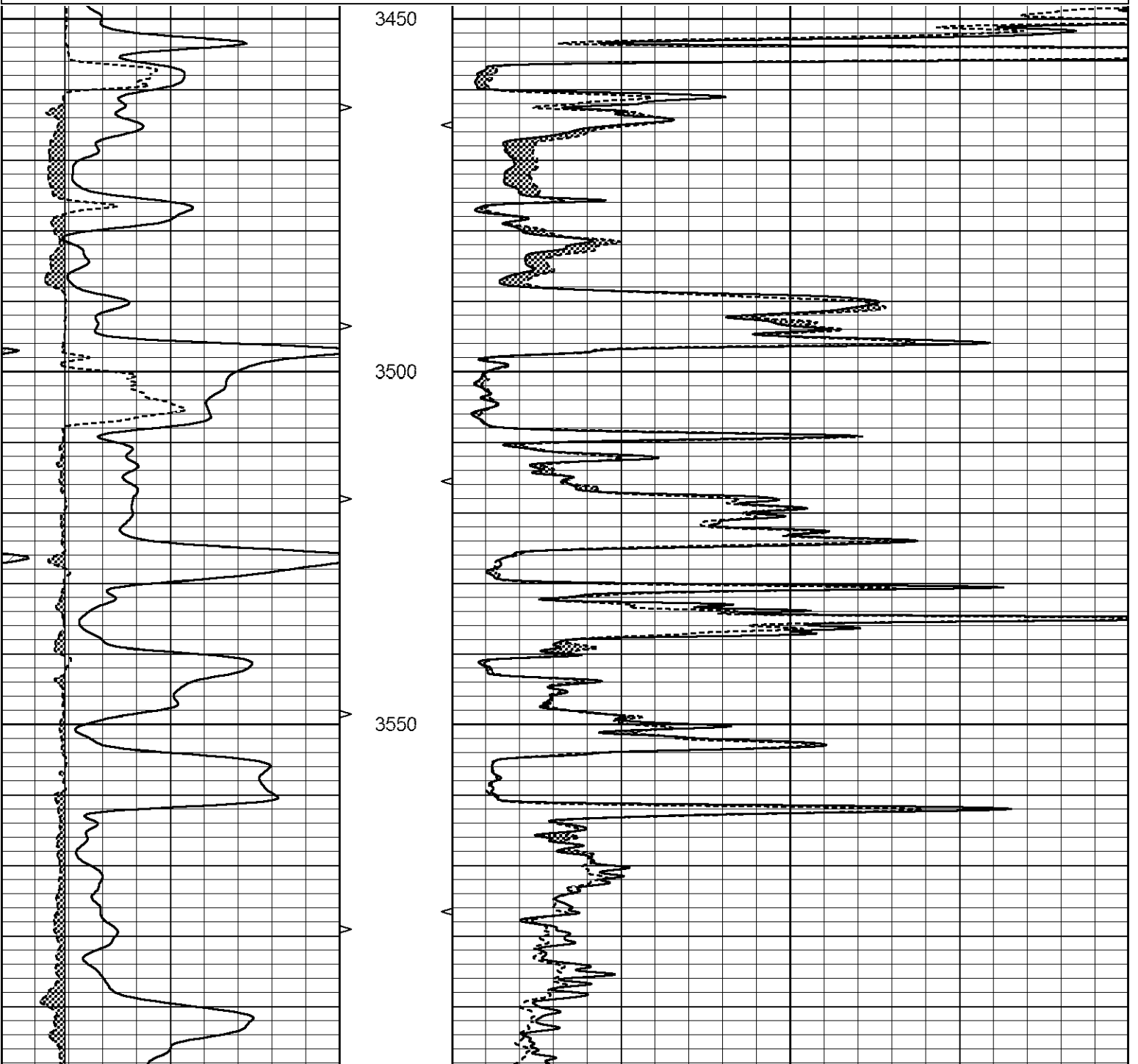
			TBHV			
			0 (ft3)	10		

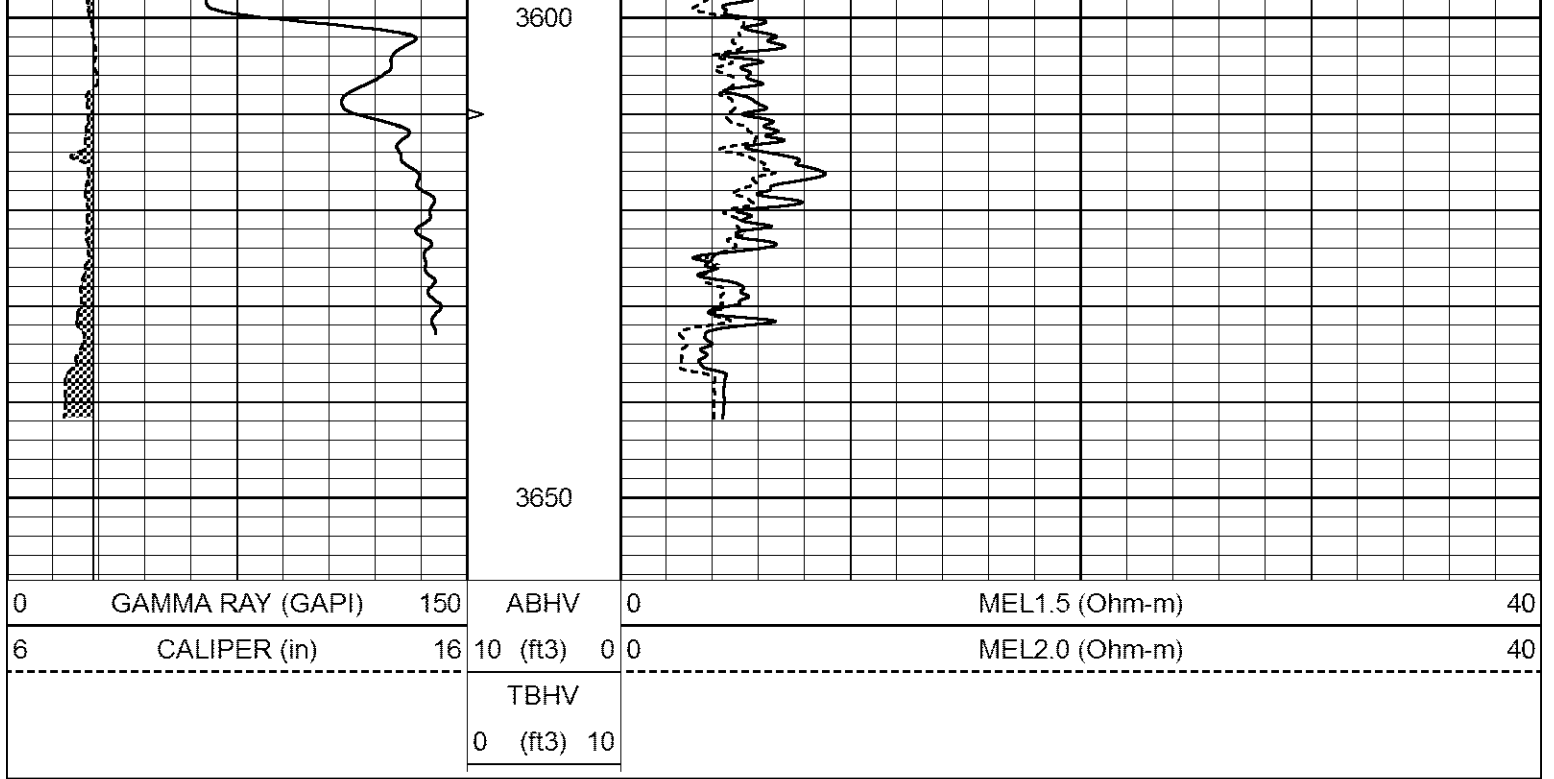


REPEAT SECTION

Database File 7023pe.db
Dataset Pathname pass5.1
Presentation Format _micro
Dataset Creation Wed Sep 28 06:34:36 2022
Charted by Depth in Feet scaled 1:240

0	GAMMA RAY (GAPI)	150	ABHV	0	MEL1.5 (Ohm-m)	40
6	CALIPER (in)	16	10 (ft3)	0 0	MEL2.0 (Ohm-m)	40
			TBHV			
			0 (ft3)	10		





Calibration Report

Database File 7023pe.db
 Dataset Pathname pass6.4
 Dataset Creation Wed Sep 28 06:15:56 2022

MICRO_USR Calibration Report

Serial Number: 070910
 Tool Model: ProbeL
 Performed: Wed Sep 21 00:40:51 2022

Caliper Calibration: Gain=7.212 Offset=1.800

	Low Cal	High Cal
References	8.000	14.000
Readings	0.725	1.557

1.5" Calibration: Gain=38.000 Offset=0.030

	Low Cal	High Cal
References	0.000	20.000
Readings	0.004	1.335

2" Calibration: Gain=45.000 Offset=0.000

	Low Cal	High Cal
References	0.000	20.000
Readings	0.004	1.029

Microlog Calibration Report

Serial-Model: 070910-ProbeL
 Performed: (Not Performed)

	Readings			V	References			Results	
	Zero	Cal			Zero	Cal		m	b
Normal	0.0000	1.0000			0.0000	1.0000	Ohm-m	1.0000	0.0000
Inverse	0.0000	1.0000			0.0000	1.0000	Ohm-m	1.0000	0.0000
Caliper	0.0000	1.0000			0.0000	1.0000	in	1.0000	0.0000

Gamma Ray Calibration Report

Serial Number:	070558	
Tool Model:	Probe1	
Performed:	Sat Jul 02 05:55:58 2022	
Calibrator Value:	1.0	GAPI
Background Reading:	0.0	cps
Calibrator Reading:	1.0	cps
Sensitivity:	0.2600	GAPI/cps