



GENERAL			GAMMA		ACOUSTIC			DENSITY			NEUTRON			
Run No.	Depth		Speed	Scale		Scale		Matrix	Scale		Matrix	Scale		Matrix
	From	To	ft/min	L	R	L	R		L	R		L	R	
ONE	5167'	1798'	REC	0gapi	150gapi									

DIRECTIONAL INFORMATION

Maximum Deviation	@	KOP	@
-------------------	---	-----	---

Remarks: FIRST LOG ON WELL, POSITIVE DEPTH CONTROL APPLIED

SCALES AND PRESENTATIONS AS PER CLIENT REQUEST

TOOLS RAN IN COMBINATION AS PER TOOLSTRING DIAGRAM

ANNULAR HOLE VOLUME CALCULATED FOR 5.5 INCH CASING

CREW: C. HERRERA, B. EZEKWU

\*\*\*THANK YOU FOR CHOOSING HALLIBURTON ENERGY SERVICES\*\*\*

HALLIBURTON DOES NOT GUARANTEE THE ACCURACY OF ANY INTERPRETATION OF THE LOG DATA, CONVERSION OF LOG DATA TO PHYSICAL ROCK PARAMETERS OR RECOMMENDATIONS WHICH MAY BE GIVEN BY HALLIBURTON PERSONNEL OR WHICH APPEAR ON THE LOG OR IN ANY OTHER FORM. ANY USER OF SUCH DATA, INTERPRETATIONS, CONVERSIONS, OR RECOMMENDATIONS AGREES THAT HALLIBURTON IS NOT RESPONSIBLE EXCEPT WHERE DUE TO GROSS NEGLIGENCE OR WILLFUL MISCONDUCT, FOR ANY LOSS, DAMAGES, OR EXPENSES RESULTING FROM THE USE THEREOF.

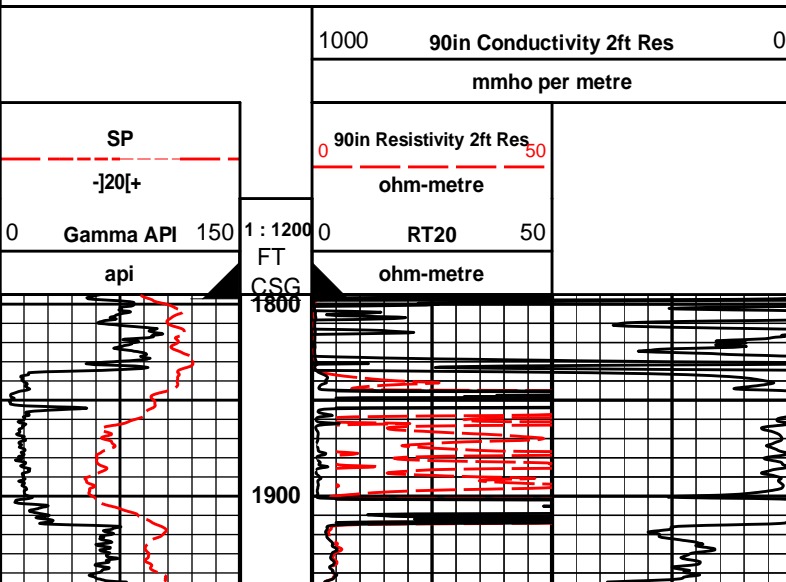
HALLIBURTON

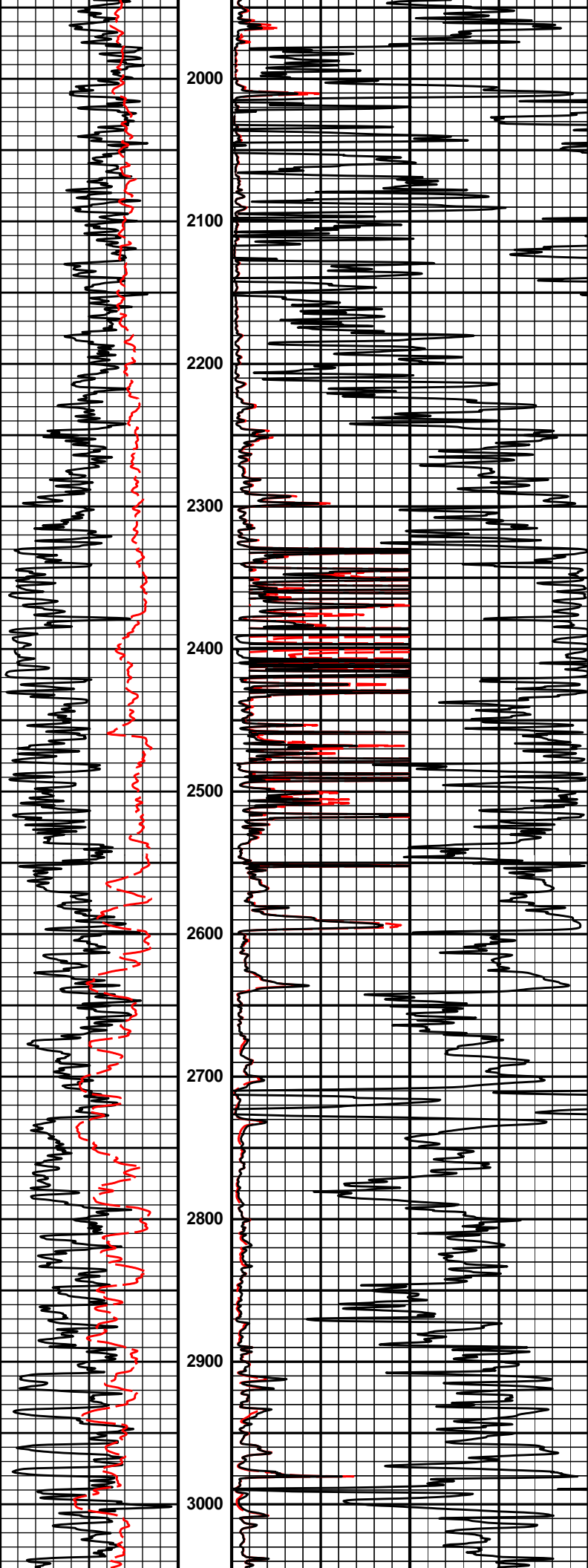
**HALLIBURTON**

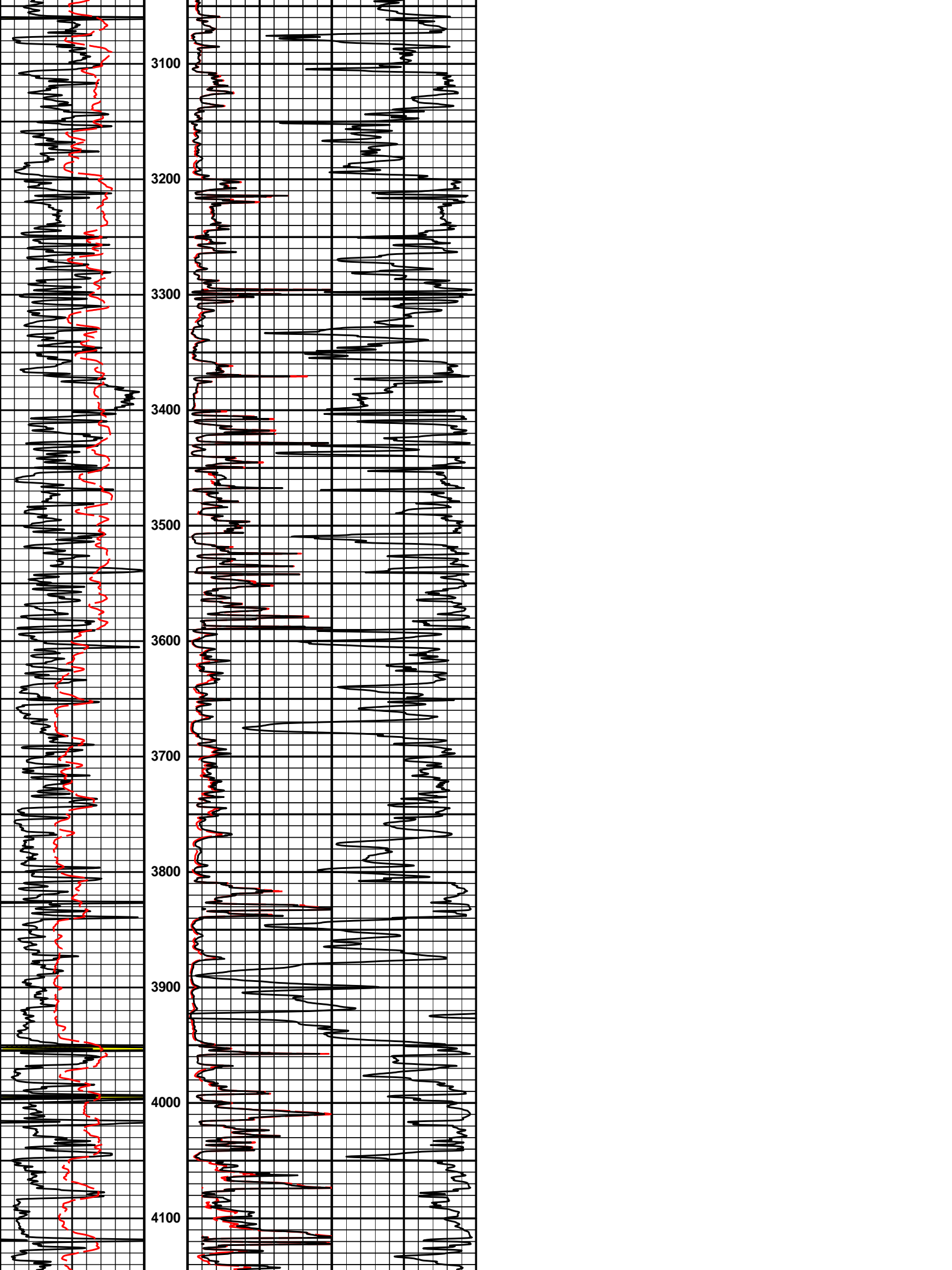
Plot Time: 26-Sep-22 21:55:01  
 Plot Range: 1795 ft to 5167 ft  
 Data: 09\_26\_MERITWell Based\DAQ-MAIN  
 Plot File: \\LOCAL-109\_26\_MERIT0001 GTET-DSNT-SDLT-BSAT-ACRT\ACRT1\ACRT\_1\_main

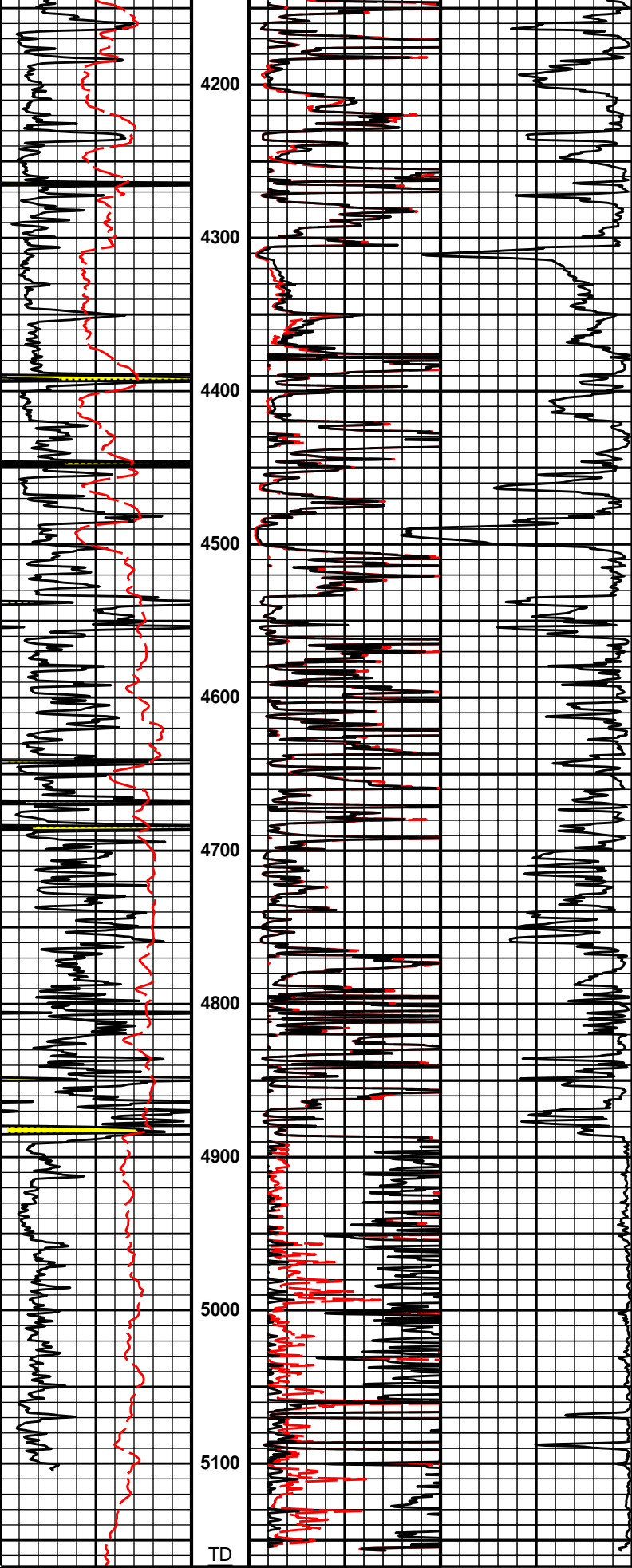
## 1 INCH MAIN LOG

1 INCH MAIN LOG









0	Gamma API	150	1 : 1200	0	RT20	50
	api		FT		ohm-metre	
	SP			0	90in Resistivity 2ft Res	50

-]20[+

ohm-metre

1000 90in Conductivity 2ft Res 0

mmho per metre

# HALLIBURTON


Plot Time: 26-Sep-22 21:55:03  
Plot Range: 1795 ft to 5167 ft  
Data: 09\_26\_MERITWell Based\DAQ-MAIN  
Plot File: \\LOCAL-109\_26\_MERIT\001 GTET-DSNT-SDLT-BSAT-ACRT\ACRT1\ACRT\_1\_main

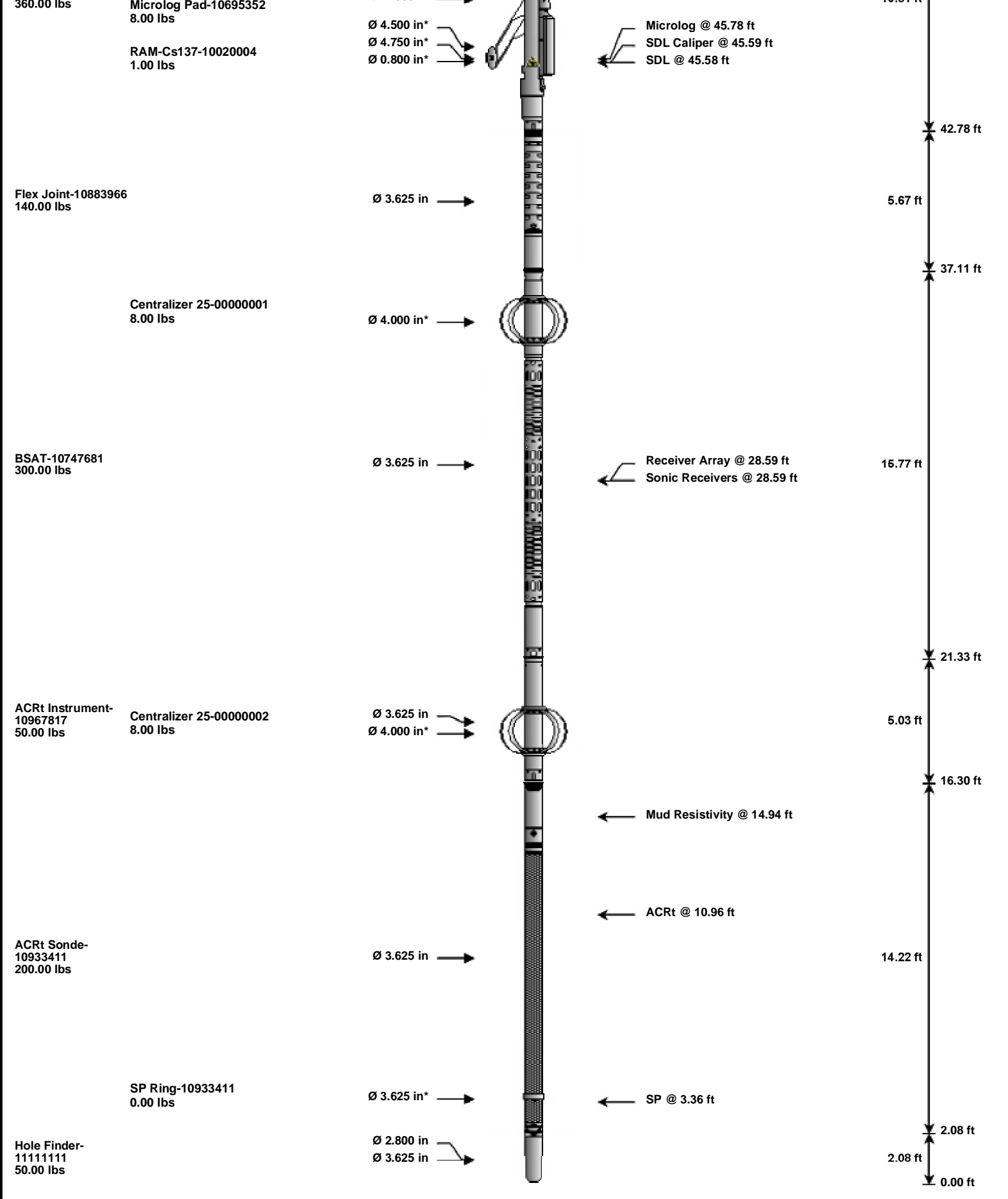
## 1 INCH MAIN LOG

1 INCH MAIN LOG

# HALLIBURTON

## TOOL STRING DIAGRAM REPORT

Description	Overbody Description	O.D.	Diagram	Sensors @ Delays	Length	Accumulated Length
		Ø 2.310 in →		← Fishing Neck @ 77.17 ft		78.05 ft
RWCH-12027540 135.00 lbs	Weak Point 12000 lbs- 00000012 0.01 lbs	Ø 3.625 in →		← Load Cell @ 74.36 ft ← BH Temperature @ 73.80 ft	6.25 ft	
		Ø 0.010 in* →		← Z-Accelerometer @ 71.35 ft		71.80 ft
GTET-11405267 165.00 lbs		Ø 3.625 in →		← GammaRay @ 65.74 ft	8.52 ft	
						63.28 ft
DSNT-11019641 174.00 lbs	DSN Decentralizer- 11019643 6.60 lbs	Ø 5.000 in* → Ø 3.625 in →	← DSN Far @ 56.34 ft ← DSN Near @ 55.59 ft		9.69 ft	53.59 ft
SDLT-10695352	SDLT Pad-10865883 65.00 lbs	Ø 4.500 in →			10.81 ft	



Mnemonic	Tool Name	Serial Number	Weight (lbs)	Length (ft)	Accumulated Length (ft)	Max. Log. Speed (fpm)
RWCH	Releasable Wireline Cable Head	12027540	135.00	6.25	71.80	300.00
WP12K	Weak Point 12000 lbs	00000012	0.01	0.01	* 72.60	300.00
GTET	Gamma Telemetry Tool	11405267	165.00	8.52	63.28	60.00
DSNT	Dual Spaced Neutron	11019641	174.00	9.69	53.59	60.00
DCNT	DSN Decentralizer	11019643	6.60	5.13	* 56.92	300.00

SDLT	Spectral Density Tool	10695352	360.00	10.81	42.78	60.00
SDLP	Density Insite Pad	10865883	65.00	2.55 *	44.99	60.00
Cs137	Logging Source, SDLT-I, 1.78 Ci - Cs137	10020004	1.00	0.80 *	45.22	300.00
MICP	Microlog Pad	10695352	8.00	1.00 *	45.28	60.00
FLEX	Flex Joint	10883966	140.00	5.67	37.11	300.00
BSAT	Borehole Sonic Array Tool	10747681	300.00	15.77	21.33	60.00
OBCEN	Centralizer - 25 in. Overbody	00000001	8.00	2.08 *	33.99	300.00
ACRt	Array Compensated True Resistivity Instrument Section	10967817	50.00	5.03	16.30	120.00
OBCEN	Centralizer - 25 in. Overbody	00000002	8.00	2.08 *	17.29	300.00
ACRt	Array Compensated True Resistivity Sonde Section	10933411	200.00	14.22	2.08	120.00
SP	SP Ring	10933411	0.00	0.25 *	3.36	300.00
HFND	Hole Finder	11111111	50.00	2.08	0.00	300.00

<b>Total</b>			<b>1,670.61</b>	<b>78.05</b>		
					* Not included in Total Length and Length Accumulation.	
<b>Data: 09_26_MERIT0001 GTET-DSNT-SDLT-BSAT-ACRTIDLE</b>						<b>Date: 26-Sep-22 18:49:20</b>

COMPANY	<b>MERIT ENERGY COMPANY, LLC</b>		
WELL	<b>CELONA No. 1-12</b>		
FIELD	<b>ST LOUIS</b>		
COUNTY	<b>FINNEY</b>	STATE	<b>KS</b>

**HALLIBURTON**

**ARRAY COMPENSATED  
TRUE RESISTIVITY  
(1 INCH)**