

HALLIBURTON

ARRAY COMPENSATED TRUE RESISTIVITY (2 INCH)

COMPANY		MERIT ENERGY COMPANY, LLC	
WELL		CELONA No. 1-12	
FIELD/BLOCK		ST LOUIS	
COUNTY		FINNEY	
STATE		KS	
Permanent Datum		GL	Elev. 2830.0 ft
Log measured from		KB	Elev. 2841.0 ft
Drilling measured from		KB	Elev. 2830.0 ft
Date	26-Sep-22		
Run No.	ONE		
Depth - Driller	5173.0 ft		
Depth - Logger	5167.0 ft		
Bottom - Logged Interval	5154.0 ft		
Top - Logged Interval	1798.0 ft		
Casing - Driller	8.625 in @ 1798.0 ft		
Casing - Logger	1798.0 ft		
Bit Size	7.875 in		
Type Fluid in Hole	Water Based Mud		
Density	9.2 ppg	50.00 s/qt	
PH	11.00 pH	5.6 optm	
Source of Sample	MUDPIT		
Rm @ Meas. Temperature	1.11 ohmm @ 78.00 degF	@	
Rmf @ Meas. Temperature	0.80 ohmm @ 78.00 degF	@	
Rmc @ Meas. Temperature	1.28 ohmm @ 78.00 degF	@	
Source Rmf	CALC	CALC	
Rm @ BHT	0.70 ohmm @ 128.0 degF	@	
Time Since Circulation	05.34 hr		
Time on Bottom	26-Sep-22 20:07		
Max. Rec. Temperature	128.00 degF @ 5165.0 ft	@	
Equipment	12128583	ALVARADO, T.	
Recorded By	K. BIJERGA		
Witnessed By	K. ROBINSON		
COMPANY		MERIT ENERGY COMPANY, LLC	
WELL		CELONA No. 1-12	
FIELD/BLOCK		ST LOUIS	
COUNTY		FINNEY	
STATE		KS	
API No.	15055225510100	Other Services:	
Location	267' FWL & 458' FNL SW NW NW NW	GTET	
		DSNT-SDLT	
		BSAT	
		ACRT	
Sect.	12	Twp.	25S
		Rge.	32W

Fold here

Sales Order Number: 908128151				API No.: 15055225510100				PGM Version: WL INSITE R6.6.7 (Build 8)			
CHANGE IN MUD TYPE OR ADDITIONAL SAMPLE						RESISTIVITY SCALE CHANGES					
Date	Sample No.			Type Log	Depth	Scale Up Hole	Scale Down Hole				
Depth-Driller											
Type Fluid in Hole											
Density	Viscosity										
Ph	Fluid Loss										
Source of Sample						RESISTIVITY EQUIPMENT DATA					
Rm @ Meas. Temp	@		@	Run No.	Tool Type & No.	Pad Type	Tool Pos.	Other			
Rmf @ Meas. Temp.	@		@	ONE	ACRT	NONE	CENT	N/A			
Rmc @ Meas. Temp.	@		@		S - 10933411						
Source Rmf	Rmc										
Rm @ BHT	@		@								
Rmf @ BHT	@		@								
Rmc @ BHT	@		@								
EQUIPMENT DATA											
GAMMA			ACOUSTIC			DENSITY			NEUTRON		
Run No.	ONE		Run No.			Run No.			Run No.		
Serial No.	11405267		Serial No.			Serial No.			Serial No.		
Model No.	GTET		Model No.			Model No.			Model No.		
Diameter	3.625"		No. of Cent.			Diameter			Diameter		
Detector Model No.	GTET		Spacing			Log Type			Log Type		
Type	SCINT					Source Type			Source Type		
Length	8"		LSA [Y/N]			Serial No.			Serial No.		
Distance to Source	10'		FWDA [Y/N]			Strength			Strength		
LOGGING DATA											

GENERAL			GAMMA		ACOUSTIC		DENSITY		NEUTRON		
Run No.	Depth		Speed	Scale		Scale		Matrix	Scale		Matrix
	From	To	ft/min	L	R	L	R		L	R	
ONE	5167'	1798'	REC	0gapi	150gapi						

DIRECTIONAL INFORMATION

Maximum Deviation @ KOP @

Remarks: FIRST LOG ON WELL, POSITIVE DEPTH CONTROL APPLIED

SCALES AND PRESENTATIONS AS PER CLIENT REQUEST

TOOLS RAN IN COMBINATION AS PER TOOLSTRING DIAGRAM

ANNULAR HOLE VOLUME CALCULATED FOR 5.5 INCH CASING

CREW: C. HERRERA, B. EZEKWU

THANK YOU FOR CHOOSING HALLIBURTON ENERGY SERVICES

HALLIBURTON DOES NOT GUARANTEE THE ACCURACY OF ANY INTERPRETATION OF THE LOG DATA, CONVERSION OF LOG DATA TO PHYSICAL ROCK PARAMETERS OR RECOMMENDATIONS WHICH MAY BE GIVEN BY HALLIBURTON PERSONNEL OR WHICH APPEAR ON THE LOG OR IN ANY OTHER FORM. ANY USER OF SUCH DATA, INTERPRETATIONS, CONVERSIONS, OR RECOMMENDATIONS AGREES THAT HALLIBURTON IS NOT RESPONSIBLE EXCEPT WHERE DUE TO GROSS NEGLIGENCE OR WILLFUL MISCONDUCT, FOR ANY LOSS, DAMAGES, OR EXPENSES RESULTING FROM THE USE THEREOF.

HALLIBURTON



Plot Time: 26-Sep-22 21:57:43

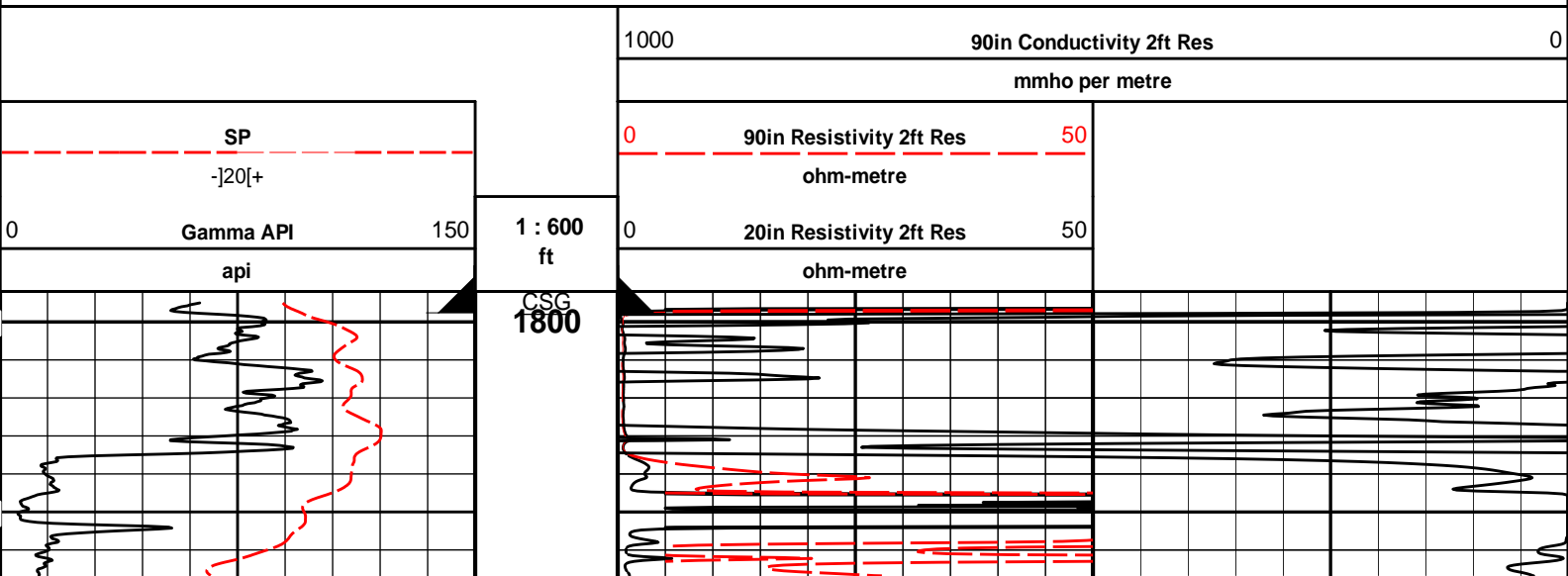
Plot Range: 1792 ft to 5170.75 ft

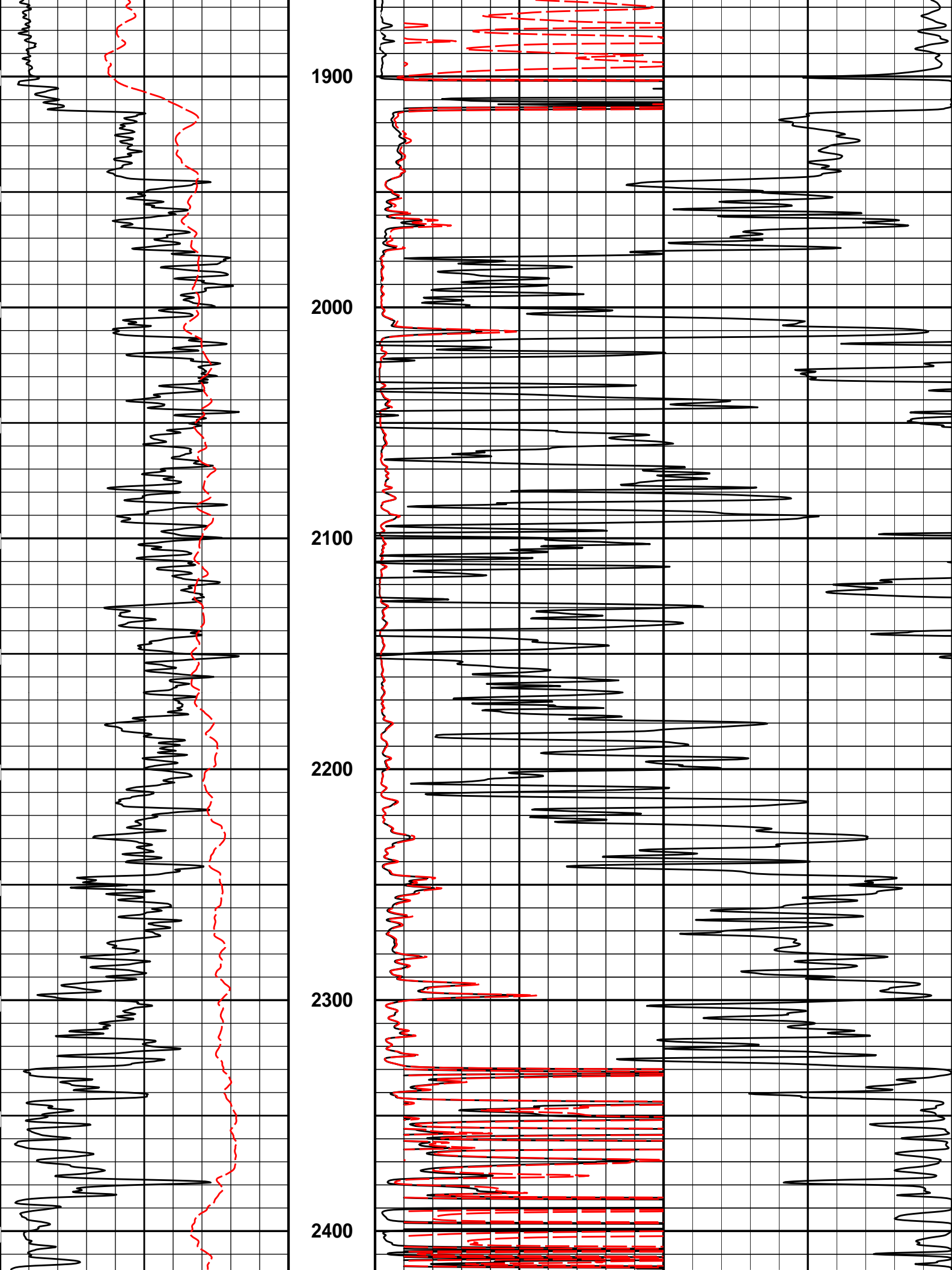
Data: 09_26_MERITWell Based\DAQ-MAIN

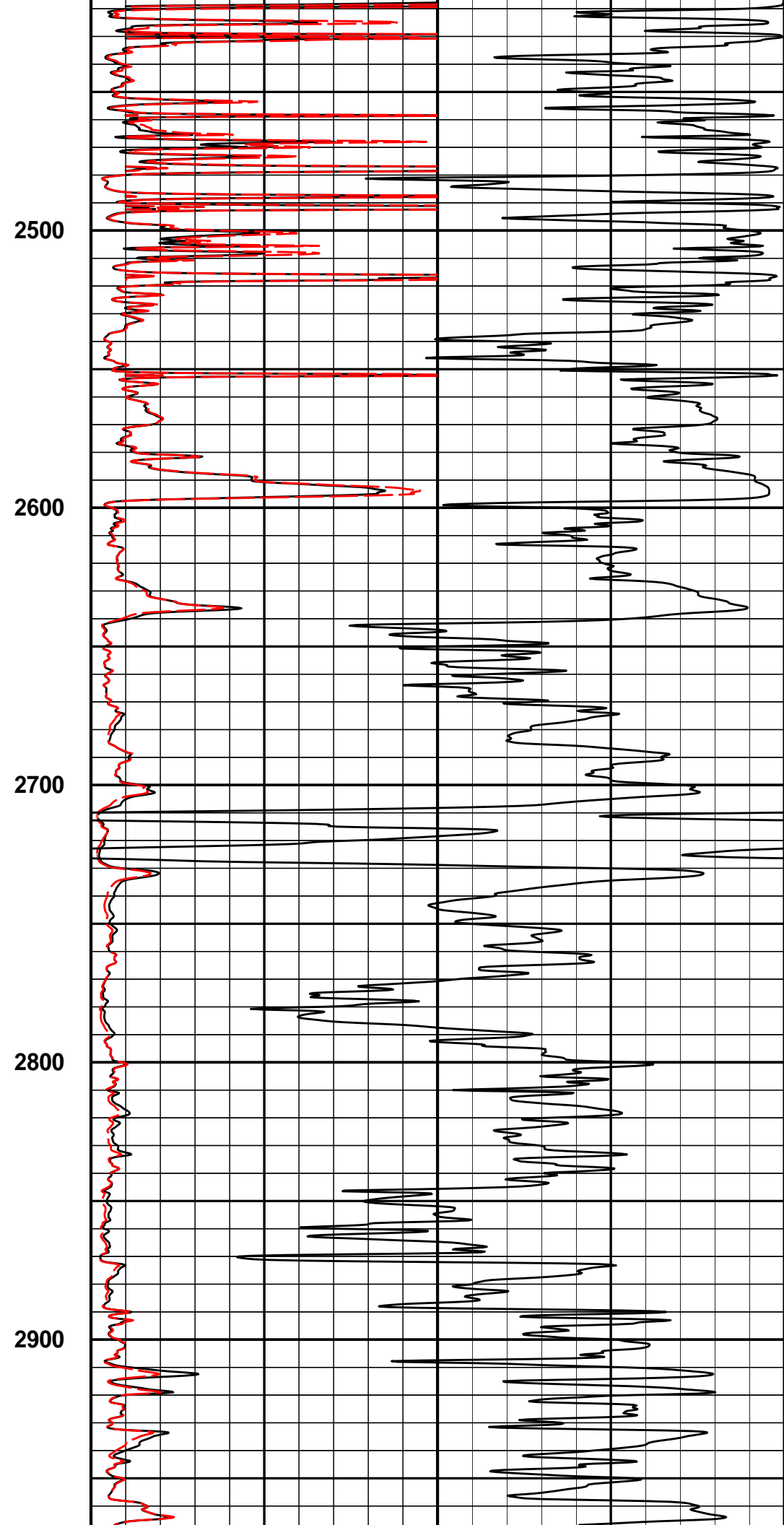
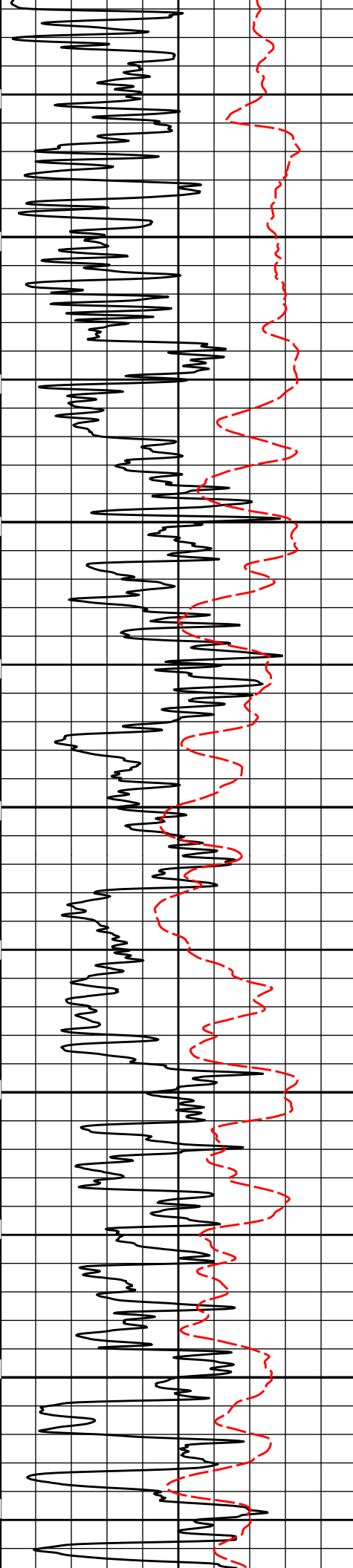
Plot File: \\-LOCAL-109_26_MERIT\0001 GTET-DSNT-SDLT-BSAT-ACRT\ACRT2\ACRT_2_main

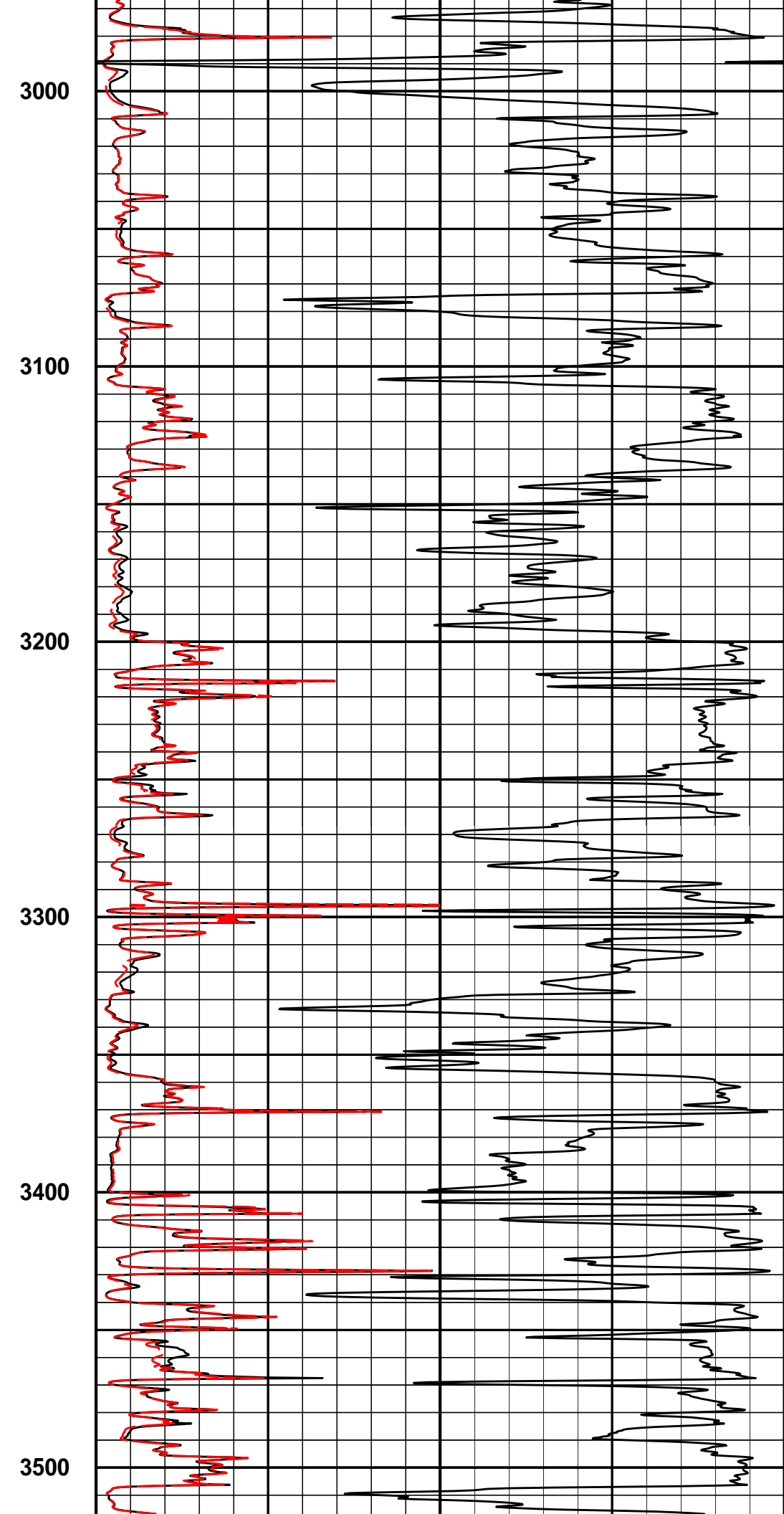
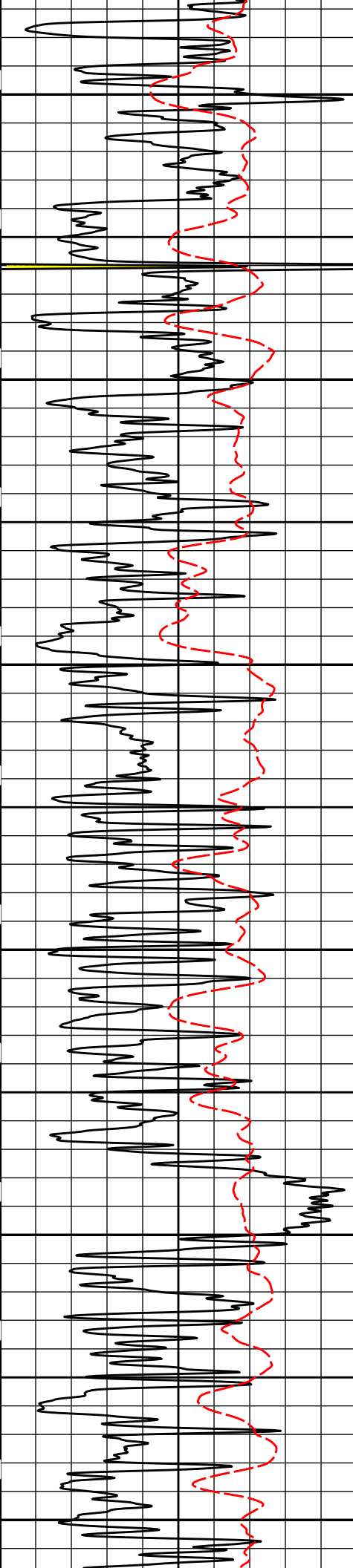
2 INCH MAIN LOG

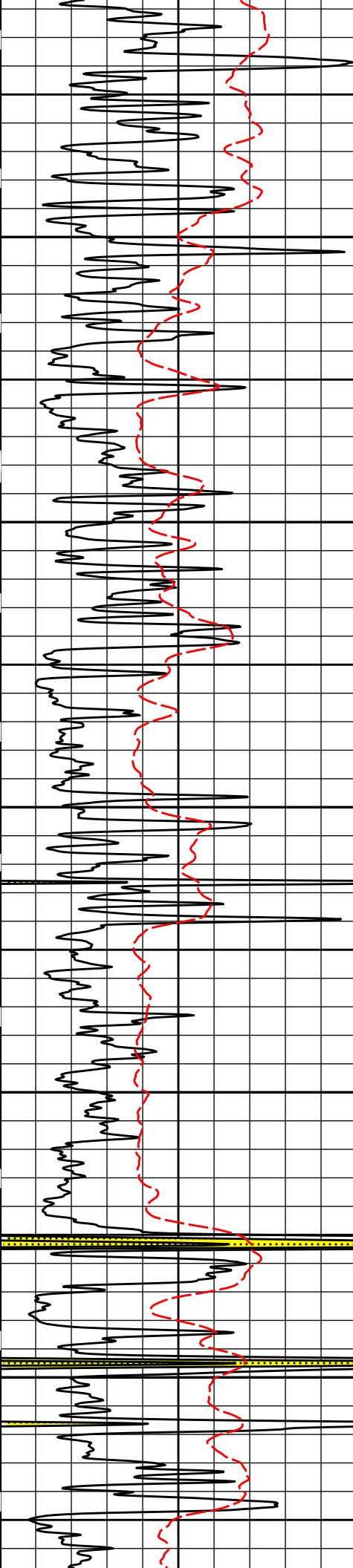
2 INCH MAIN LOG











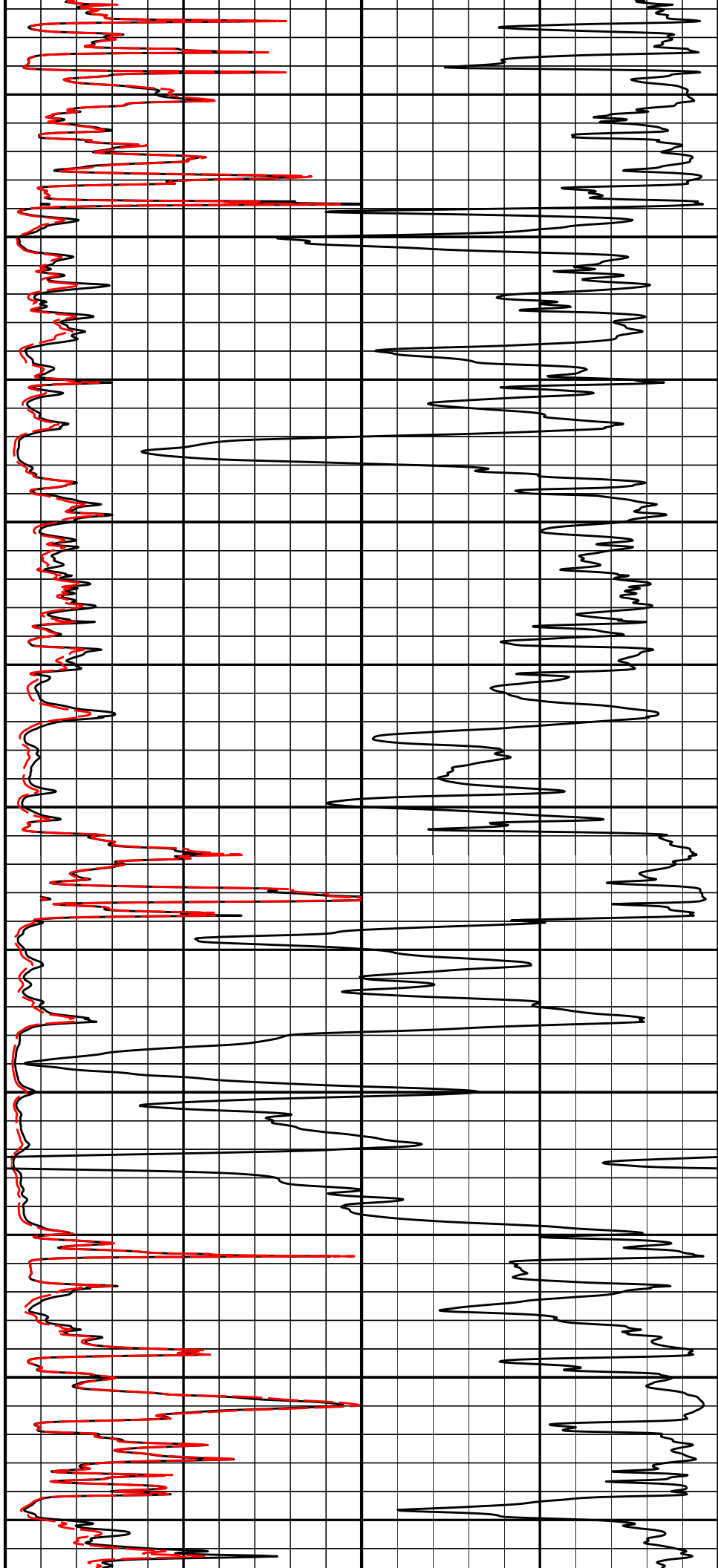
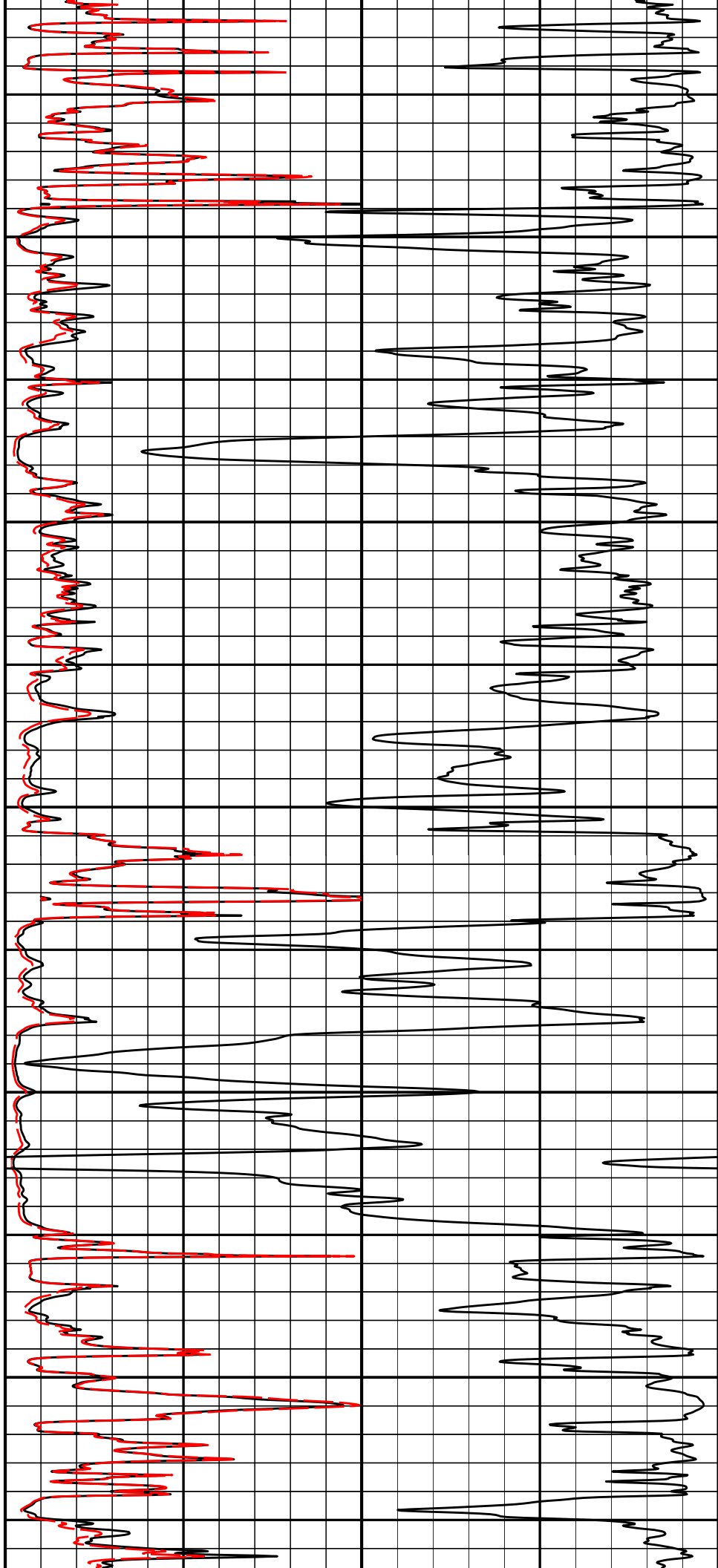
3600

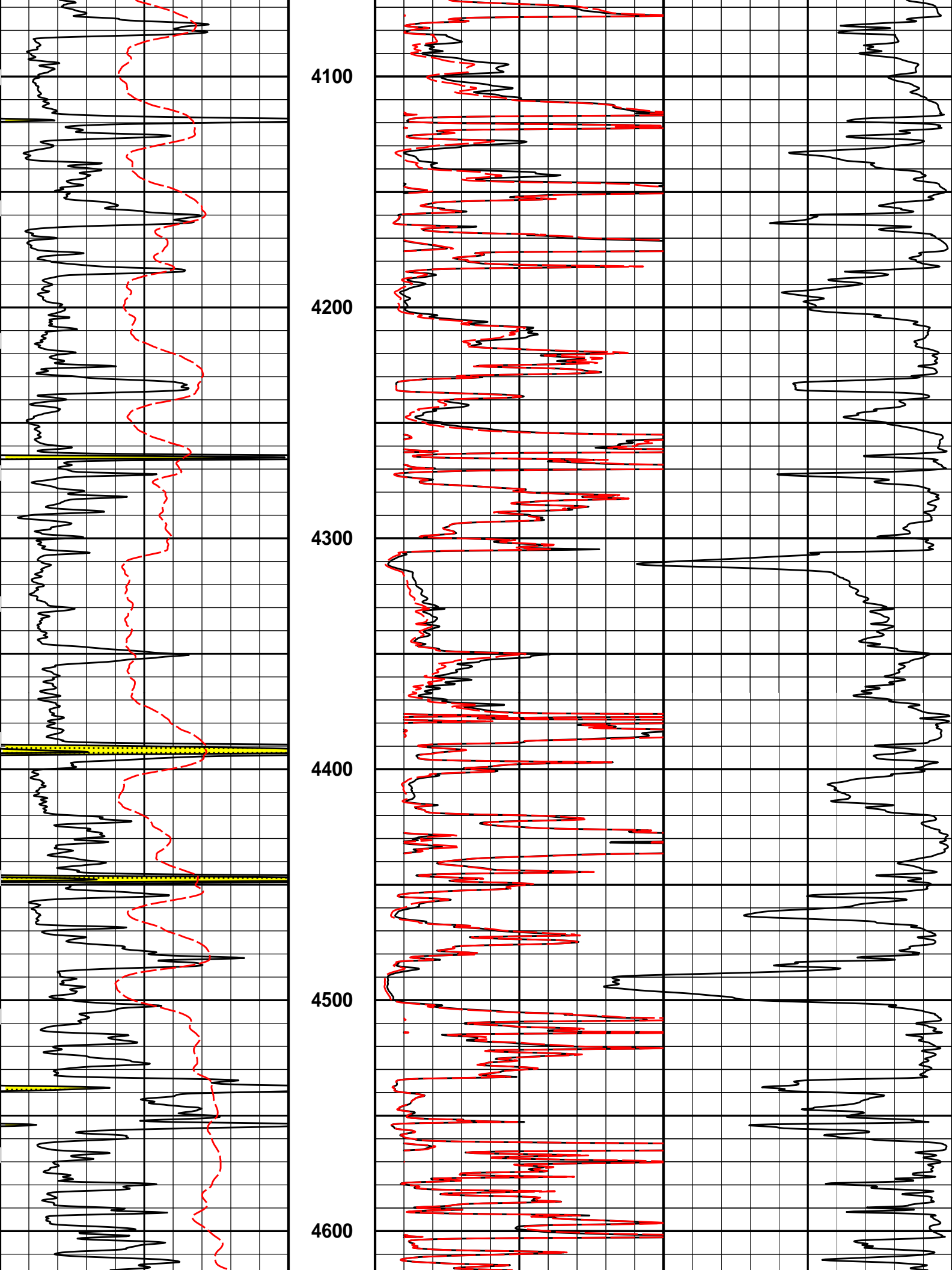
3700

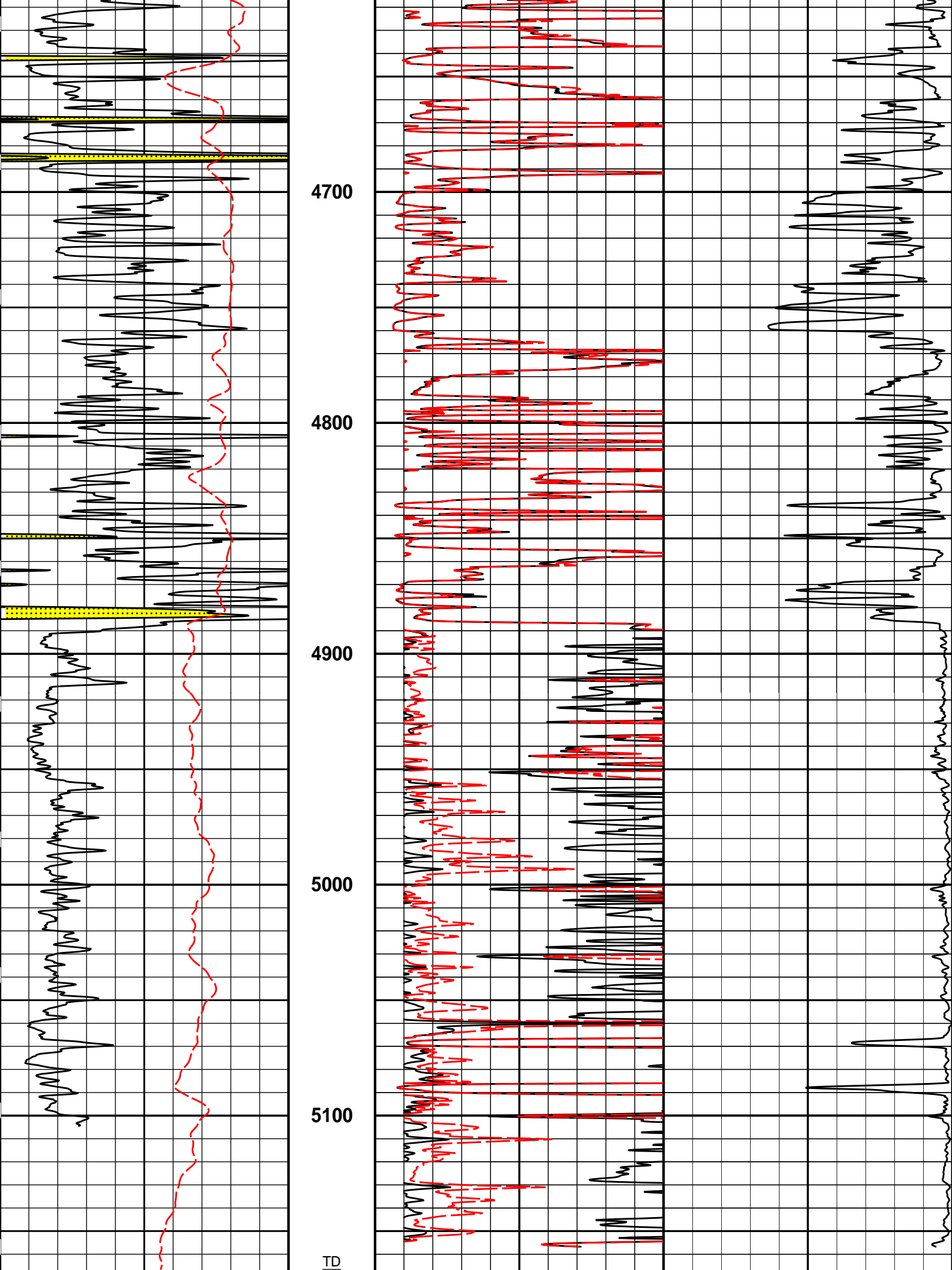
3800

3900

4000







0	Gamma API	150	1 : 600 ft	0	20in Resistivity 2ft Res	50
	api				ohm-metre	
	SP			0	90in Resistivity 2ft Res	50
	-]20[+				ohm-metre	
				1000	90in Conductivity 2ft Res	0
					mmho per metre	

HALLIBURTON

Plot Time: 26-Sep-22 21:57:46
 Plot Range: 1792 ft to 5170.75 ft
 Data: 09_26_MERIT\Well Based\DAQ-MAIN
 Plot File: \\-LOCAL-109_26_MERIT\0001 GTET-DSNT-SDLT-BSAT-ACRT\ACRT2\ACRT_2_main

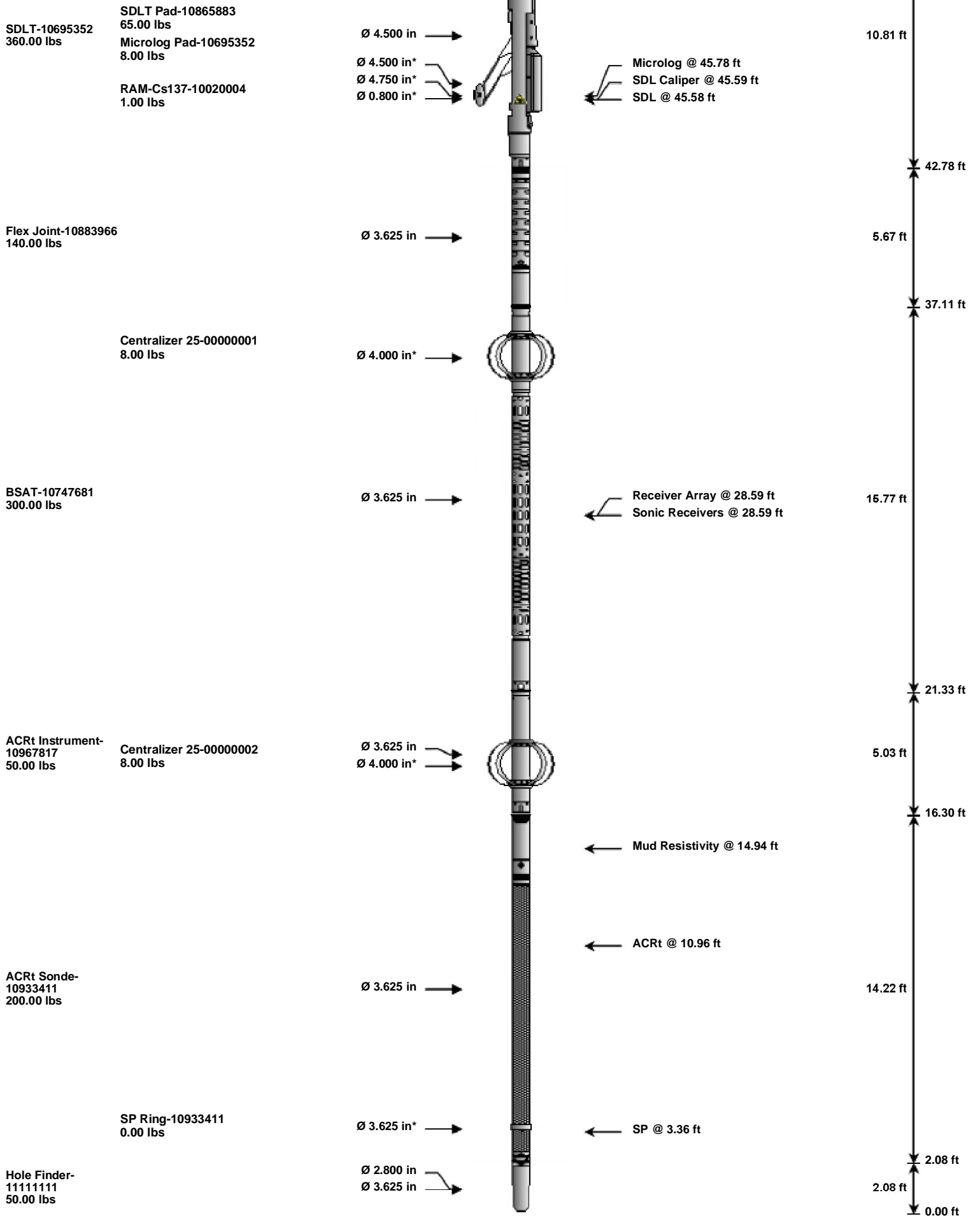
2 INCH MAIN LOG

2 INCH MAIN LOG

HALLIBURTON

TOOL STRING DIAGRAM REPORT

Description	Overbody Description	O.D.	Diagram	Sensors @ Delays	Length	Accumulated Length
RWCH-12027540 135.00 lbs	Weak Point 12000 lbs- 00000012 0.01 lbs	Ø 2.310 in → Ø 3.625 in → Ø 0.010 in* →		← Fishing Neck @ 77.17 ft		78.05 ft
				← Load Cell @ 74.36 ft ← BH Temperature @ 73.80 ft	6.25 ft	
				← Z-Accelerometer @ 71.35 ft		71.80 ft
GTET-11405267 165.00 lbs		Ø 3.625 in →		← GammaRay @ 65.74 ft	8.52 ft	
						63.28 ft
DSNT-11019641 174.00 lbs	DSN Decentralizer- 11019643 6.60 lbs	Ø 5.000 in* → Ø 3.625 in →		← DSN Far @ 56.34 ft ← DSN Near @ 55.59 ft	9.69 ft	53.59 ft



Mnemonic	Tool Name	Serial Number	Weight (lbs)	Length (ft)	Accumulated Length (ft)	Max.Log. Speed (fpm)
SDLT-10695352	SDLT Pad-10865883 Microlog Pad-10695352 RAM-Cs137-10020004		360.00 lbs 65.00 lbs 8.00 lbs 1.00 lbs	10.81 ft		
Flex Joint-10883966	Flex Joint-10883966		140.00 lbs	42.78 ft		
Centralizer 25-00000001	Centralizer 25-00000001		8.00 lbs	37.11 ft		
BSAT-10747681	BSAT-10747681		300.00 lbs	15.77 ft		
ACRt Instrument-10967817	Centralizer 25-00000002		50.00 lbs 8.00 lbs	21.33 ft		
ACRt Sonde-10933411	ACRt Sonde-10933411		200.00 lbs	5.03 ft		
SP Ring-10933411	SP Ring-10933411		0.00 lbs	16.30 ft		
Hole Finder-11111111	Hole Finder-11111111		50.00 lbs	14.22 ft		
				2.08 ft		
				0.00 ft		

RWCH	Releasable Wireline Cable Head	12027540	135.00	6.25	71.80	300.00
WP12K	Weak Point 12000 lbs	00000012	0.01	0.01 *	72.60	300.00
GTET	Gamma Telemetry Tool	11405267	165.00	8.52	63.28	60.00
DSNT	Dual Spaced Neutron	11019641	174.00	9.69	53.59	60.00
DCNT	DSN Decentralizer	11019643	6.60	5.13 *	56.92	300.00
SDLT	Spectral Density Tool	10695352	360.00	10.81	42.78	60.00
SDLP	Density Insite Pad	10865883	65.00	2.55 *	44.99	60.00
Cs137	Logging Source, SDLT-I, 1.78 Ci - Cs137	10020004	1.00	0.80 *	45.22	300.00
MICP	Microlog Pad	10695352	8.00	1.00 *	45.28	60.00
FLEX	Flex Joint	10883966	140.00	5.67	37.11	300.00
BSAT	Borehole Sonic Array Tool	10747681	300.00	15.77	21.33	60.00
OBCEN	Centralizer - 25 in. Overbody	00000001	8.00	2.08 *	33.99	300.00
ACRt	Array Compensated True Resistivity Instrument Section	10967817	50.00	5.03	16.30	120.00
OBCEN	Centralizer - 25 in. Overbody	00000002	8.00	2.08 *	17.29	300.00
ACRt	Array Compensated True Resistivity Sonde Section	10933411	200.00	14.22	2.08	120.00
SP	SP Ring	10933411	0.00	0.25 *	3.36	300.00
HFND	Hole Finder	11111111	50.00	2.08	0.00	300.00
Total			1,670.61	78.05		

* Not included in Total Length and Length Accumulation.

Data: 09_26_MERIT0001 GTET-DSNT-SDLT-BSAT-ACRTIDLE

Date: 26-Sep-22 18:49:20

COMPANY	MERIT ENERGY COMPANY, LLC		
WELL	CELONA No. 1-12		
FIELD	ST LOUIS		
COUNTY	FINNEY	STATE	KS
HALLIBURTON		ARRAY COMPENSATED TRUE RESISTIVITY (2 INCH)	