



**COMPENSATED
DENSITY/NEUTRON
LOG**

Company CHIZUM OIL, LLC.
Well STARKEY TRUST #1-34
Field UNNAMED
County THOMAS
State KANSAS

Company CHIZUM OIL, LLC.
Well STARKEY TRUST #1-34
Field UNNAMED
County THOMAS State KANSAS

Location: API #: 15-193-21112-0000
1100' FNL & 1680' FWL
SEC 34 TWP 8S RGE 36W
Permanent Datum GROUND LEVEL Elevation 3394
Log Measured From KELLY BUSHING 5' A.G.L
Drilling Measured From KELLY BUSHING
Elevation
K.B. 3399
D.F. 3397
G.L. 3394

Date	12/15/22
Run Number	ONE
Depth Driller	4860
Depth Logger	4862
Bottom Logged Interval	4838
Top Log Interval	3900
Casing Driller	8 5/8" @ 335
Casing Logger	335
Bit Size	7 7/8
Type Fluid in Hole	CHEMICAL MUD
Density / Viscosity	9.5/49
PH / Fluid Loss	10.0/9.6
Source of Sample	FLOWLINE
Rm @ Meas. Temp	.700 @ 80F
Rmt @ Meas. Temp	.525 @ 80F
Rmc @ Meas. Temp	.840 @ 80F
Source of Rmf / Rmc	MEASUREMENT
Rm @ BHT	.452 @ 124F
Time Circulation Stopped	2 HOURS
Time Logger on Bottom	4:30 A.M.
Maximum Recorded Temperature	124F
Equipment Number	3802
Location	HAYS, KANSAS
Recorded By	COLE ROBBEN
Witnessed By	TIM PRIEST

<<< Fold Here >>>

All interpretations are opinions based on inferences from electrical or other measurements and we cannot and do not guarantee the accuracy or correctness of any interpretation, and we shall not, except in the case of gross or willful negligence on our part, be liable or responsible for any loss, costs, damages, or expenses incurred or sustained by anyone resulting from any interpretation made by any of our officers, agents or employees. These interpretations are also subject to our general terms and conditions set out in our current Price Schedule.

Comments

THANK YOU FOR USING ELI WIRELINE SERVICES, HAYS, KS. (785) 628-6395

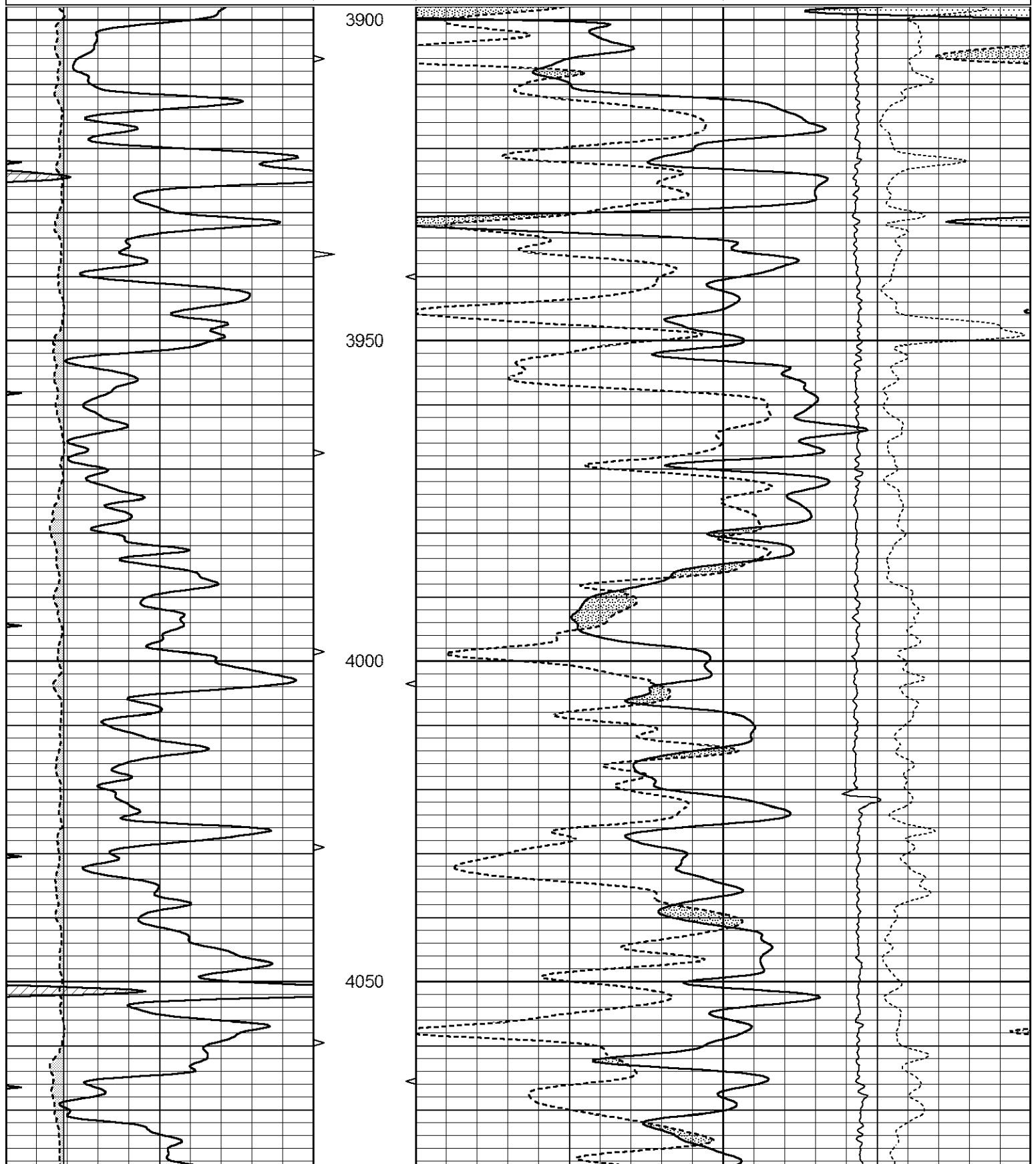
DIRECTIONS:
FROM I70/BREWSTER GO SOUTH ON COUNTY ROAD 2 FOR TWO MILES TO CURVE, WEST
TWO MILES, NORTH INTO

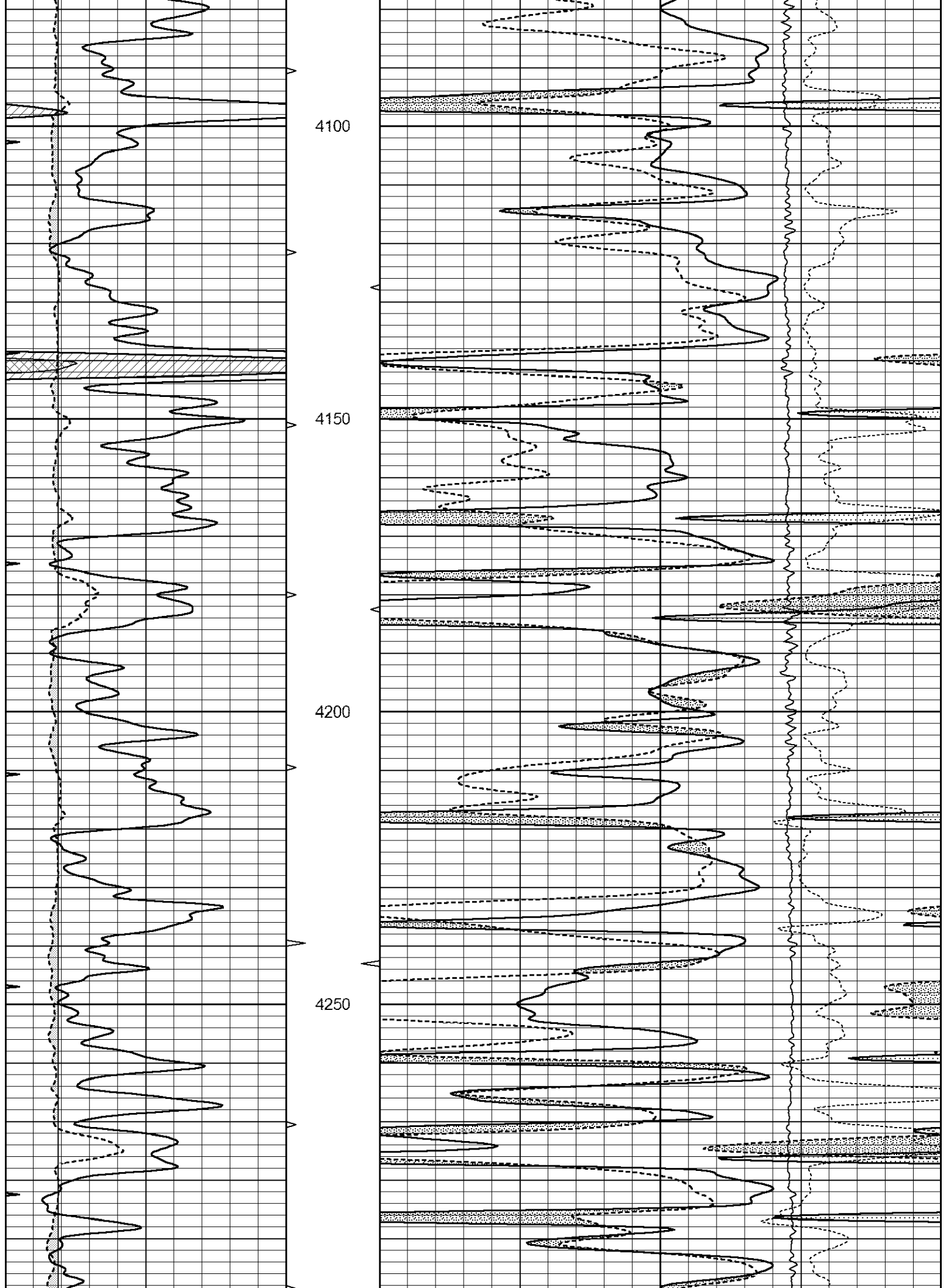


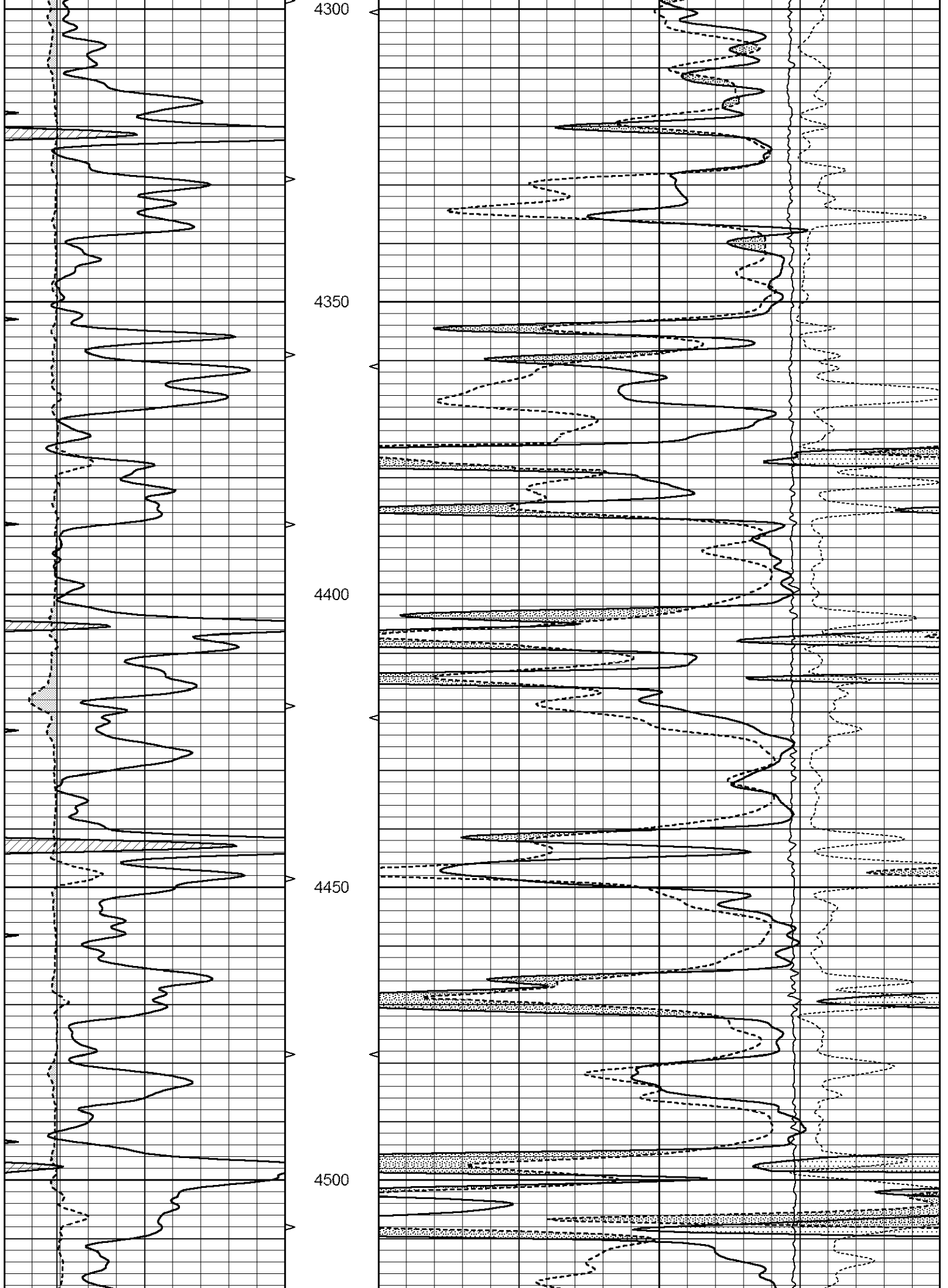
MAIN SECTION

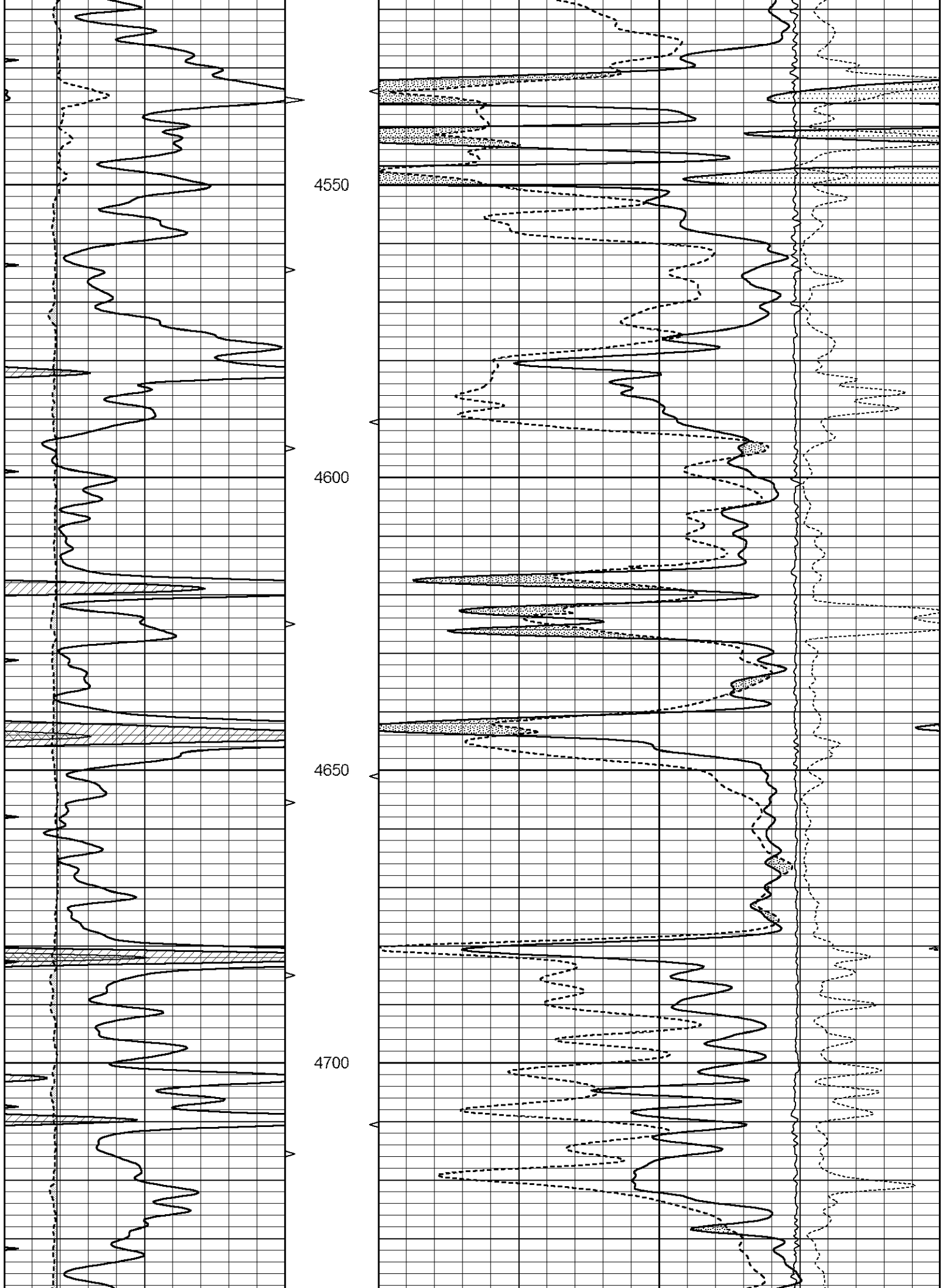
Database File 7392pe.db
 Dataset Pathname pass3d
 Presentation Format _den_neu
 Dataset Creation Thu Dec 15 06:07:04 2022
 Charted by Depth in Feet scaled 1:240

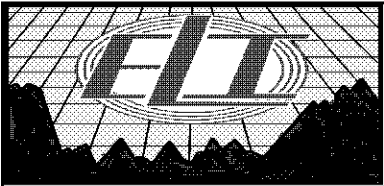
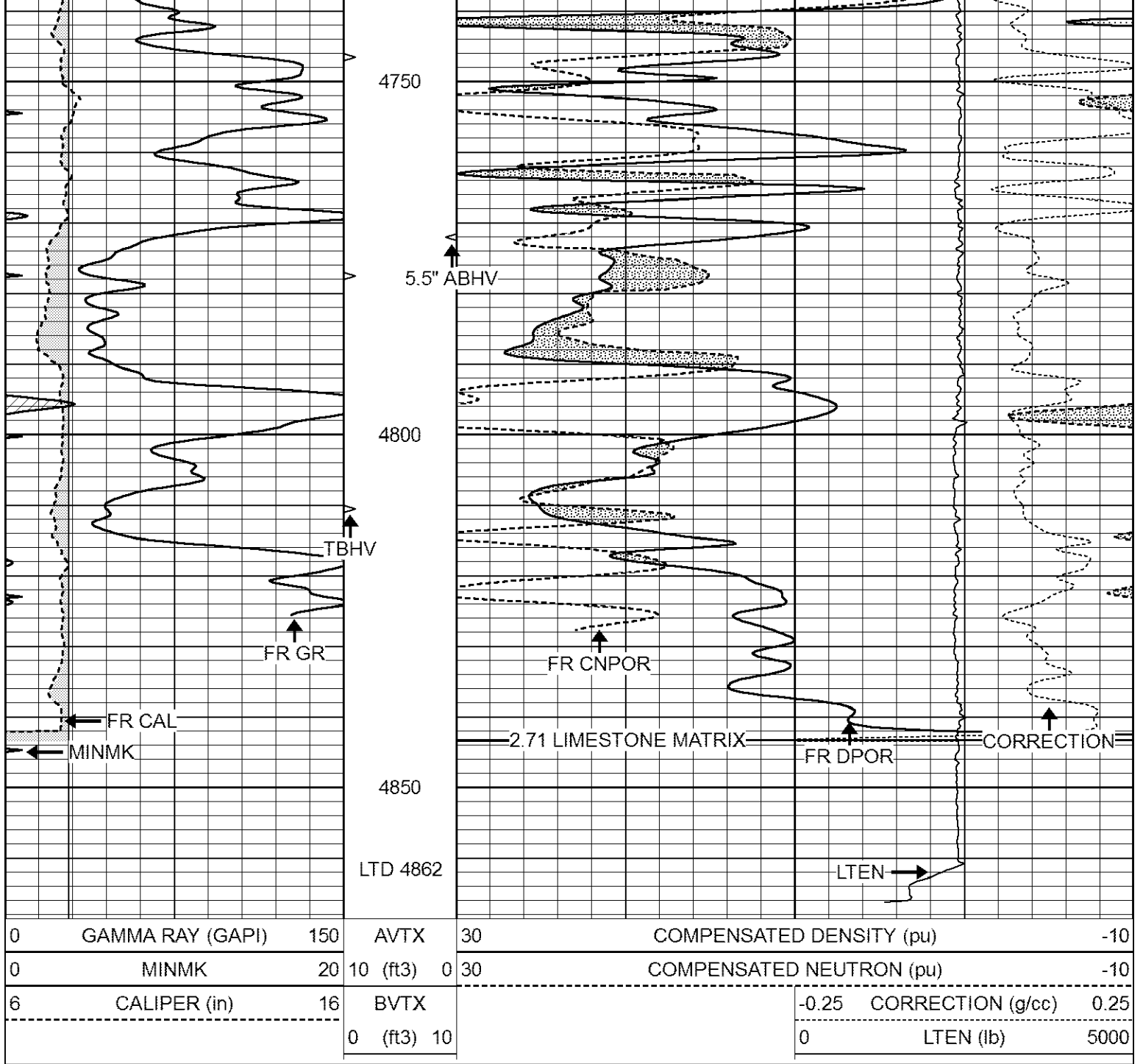
0	GAMMA RAY (GAPI)	150	AVTX	30	COMPENSATED DENSITY (pu)	-10	
0	MINMK	20	10 (ft3) 0	30	COMPENSATED NEUTRON (pu)	-10	
6	CALIPER (in)	16	BVTX		-0.25 CORRECTION (g/cc)	0.25	
			0 (ft3) 10		0	LTEN (lb)	5000







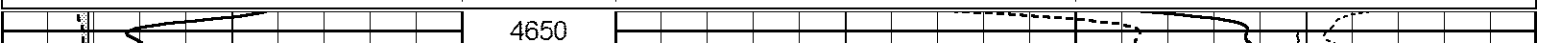


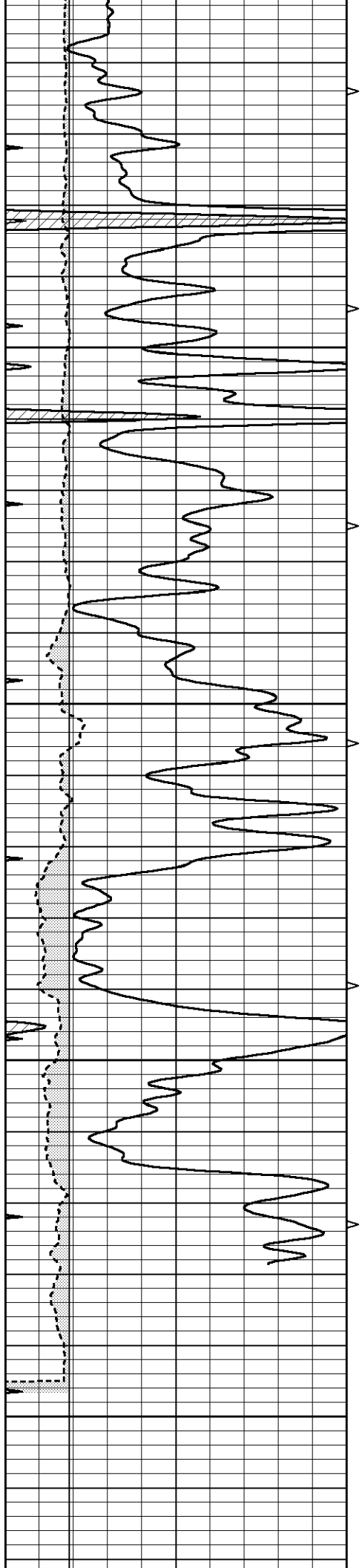


REPEAT SECTION

Database File 7392pe.db
 Dataset Pathname pass2R
 Presentation Format _den_neu
 Dataset Creation Thu Dec 15 06:41:33 2022
 Charted by Depth in Feet scaled 1:240

0	GAMMA RAY (GAPI)	150	AVTX	30	COMPENSATED DENSITY (pu)	-10	
0	MINMK	20	10 (ft3)	0 30	COMPENSATED NEUTRON (pu)	-10	
6	CALIPER (in)	16	BVTX		-0.25 CORRECTION (g/cc)	0.25	
			0 (ft3)	10	0	LTEN (lb)	5000



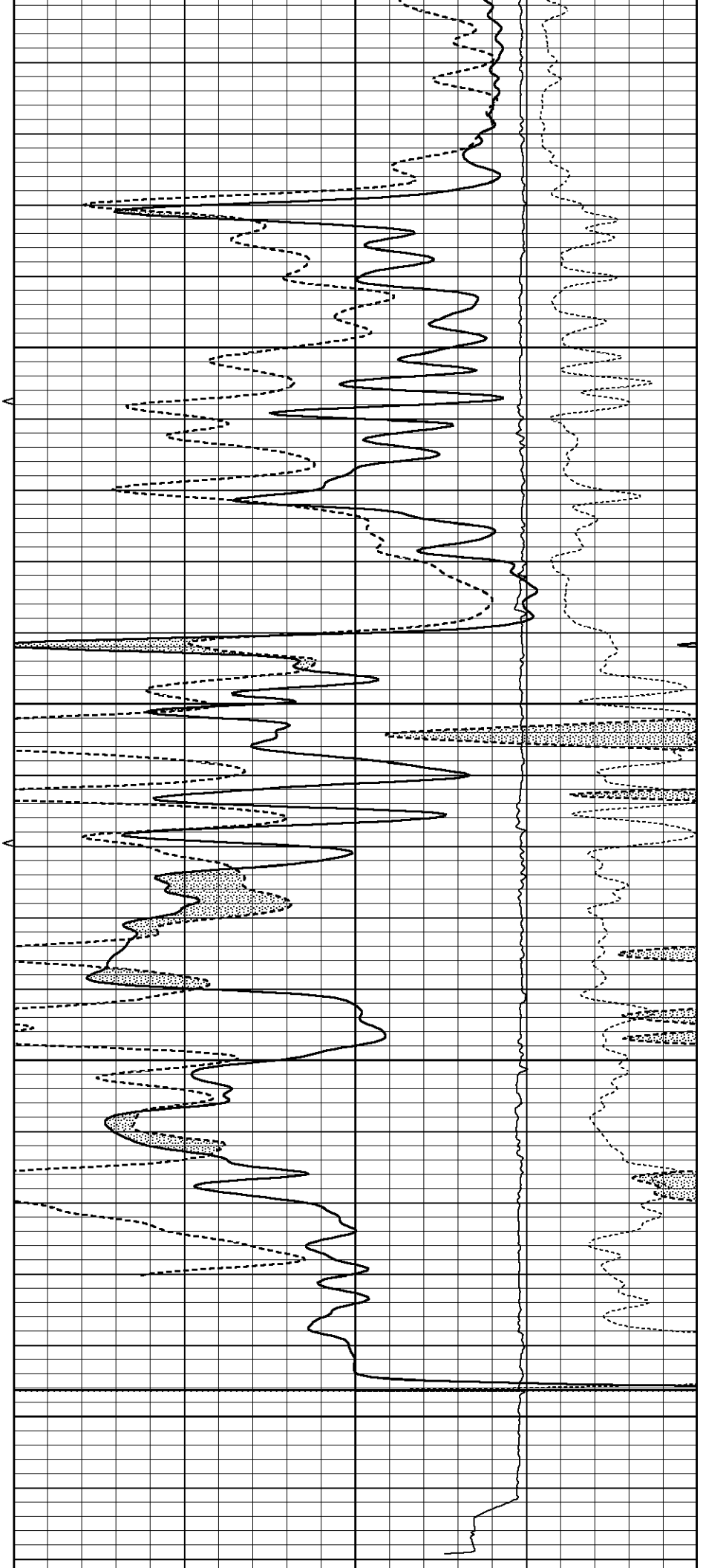


4700

4750

4800

4850



0	GAMMA RAY (GAPI)	150	AVTX	30	COMPENSATED DENSITY (pu)			-10	
0	MINMK	20	10 (ft3)	0	30	COMPENSATED NEUTRON (pu)			-10
6	CALIPER (in)	16	BVTX			-0.25	CORRECTION (g/cc)	0.25	
			0 (ft3)	10		0	LTEN (lb)	5000	

Calibration Report

Database File 7392pe.db
 Dataset Pathname pass3d
 Dataset Creation Thu Dec 15 06:07:04 2022

Dual Induction Calibration Report

Serial-Model: FW1410-55-Probe
 Surface Cal Performed: Thu Jun 30 01:48:00 2022
 Downhole Cal Performed: Tue Feb 19 11:44:24 2019
 After Survey Verification Performed: Tue Feb 19 11:44:27 2019

Surface Calibration

Loop:	Readings				References			Results	
	Air	Loop			Air	Loop		m	b
Deep	0.011	0.656	V	1.000	400.000	mmho/m	650.000	-3.000	
Medium	-0.000	0.731	V	1.000	464.000	mmho/m	632.856	-10.500	
Internal:	Zero	Cal		Zero	Cal		m	b	
Deep	0.007	0.649	V	0.000	400.000	mmho/m	623.784	-4.595	
Medium	0.004	0.743	V	0.000	464.000	mmho/m	627.284	-2.251	

Downhole Calibration

	Readings				References			Results	
	Zero	Cal			Zero	Cal		m'	b'
Deep	-0.824	395.917	mmho/m	-0.976	397.550	mmho/m	1.004	-0.149	
Medium	3.565	471.327	mmho/m	3.468	471.590	mmho/m	1.001	-0.099	
LL3		7.503	V		1500.000	Ohm-m			
		0.001	V		20.000	Ohm-m			
		-7.481	V		3745.000	mmho-m			

After Survey Verification

	Readings				Targets			Results	
	Zero	Cal			Zero	Cal		m'	b'
Deep	0.000	0.000	mmho/m	-0.824	395.917	mmho/m	1.000	0.000	
Medium	0.000	0.000	mmho/m	3.565	471.327	mmho/m	1.000	0.000	
LL3		0.000	Ohm-m		1500.000	Ohm-m			
		0.000	Ohm-m		20.000	Ohm-m			
		0.000	mmho-m		3745.000	mmho-m			

Litho Density Calibration Report
 Serial: 005 Model: Litho_Ver3

Master Calibration

Performed Fri May 13 13:54:36 2022

	Background	Magnesium	Aluminum	Aluminum+Fe	
Window 1	1363.1	46477.8	11515.9	9589.9	cps
Window 2	1239.4	36488.4	9270.1	7998.9	cps
Window 3	1044.3	20488.1	5500.7	4913.3	cps
Window 4	315.7	358.7	321.5	319.5	cps
Long Space	0.0	35249.0	8030.7	6759.4	cps
Short Space	1.4	9675.7	6523.4	5391.9	cps

Rho	1.7100	2.5900	0.0000	g/cc
Pe	2.0000	2.7500	5.7900	

Rib Angle	: 45.1	Rib Slope	: 1.003	Density/Spine Ratio	: 0.575
Spine Angle	: 75.1	Spine Slope	: 3.752	Spine Intercept	: -24.0

Before Survey Verification		Performed Wed Dec 31 18:00:00 1969			
Window 1	0.0	0.0	0.0	0.0	cps
Window 2	0.0	0.0	0.0	0.0	cps
Window 3	0.0	0.0	0.0	0.0	cps
Window 4	0.0	0.0	0.0	0.0	cps
Long Space	0.0	0.0	0.0	0.0	cps
Short Space	0.0	0.0	0.0	0.0	cps
Measured Rho		0.0000	0.0000	0.0000	g/cc
Measured Correction		0.0000	0.0000	0.0000	g/cc
Measured Pe			0.0000	0.0000	

After Survey Verification		Performed Wed Dec 31 18:00:00 1969			
Window 1	0.0	0.0	0.0	0.0	cps
Window 2	0.0	0.0	0.0	0.0	cps
Window 3	0.0	0.0	0.0	0.0	cps
Window 4	0.0	0.0	0.0	0.0	cps
Long Space	0.0	0.0	0.0	0.0	cps
Short Space	0.0	0.0	0.0	0.0	cps
Measured Rho		0.0000	0.0000	0.0000	g/cc
Measured Correction		0.0000	0.0000	0.0000	g/cc
Measured Pe			0.0000	0.0000	

Compensated Neutron Calibration Report

Serial Number:	080621PMC
Tool Model:	NABORS

PRE-SURVEY VERIFICATION

Detector	Readings	Measured	Target
Short Space	cps		
Long Space	cps	pu	pu

POST-SURVEY VERIFICATION

Detector	Readings	Measured	Target
Short Space	cps		
Long Space	cps	pu	pu

Gamma Ray Calibration Report

Serial Number:	7
Tool Model:	Probe1
Performed:	Thu May 26 08:56:46 2022

Calibrator Value:	1.0	GAPI
Background Reading:	0.0	cps
Calibrator Reading:	1.0	cps

SENSITIVITY

GROUPS