



MICRO LOG

Company CHIZUM OIL, LLC.
 Well STARKEY TRUST #1-34
 Field UNNAMED
 County THOMAS State KANSAS

Location: API #: 15-193-21112-0000
 1100' FNL & 1680' FWL
 SEC 34 TWP 8S RGE 36W
 Permanent Datum GROUND LEVEL Elevation 3394
 Log Measured From KELLY BUSHING 5' A.G.L
 Drilling Measured From KELLY BUSHING
 Other Services CDL/CNL DIL
 Elevation K.B. 3399 D.F. 3397 G.L. 3394

Date	12/15/22
Run Number	TWO
Depth Driller	4860
Depth Logger	4862
Bottom Logged Interval	4860
Top Log Interval	3900
Casing Driller	8 5/8" @ 335
Casing Logger	335
Bit Size	7 7/8
Type Fluid in Hole	CHEMICAL MUD
Density / Viscosity	9.5/49
PH / Fluid Loss	10.0/9.6
Source of Sample	FLOWLINE
Rm @ Meas. Temp	.700 @ 80F
Rmt @ Meas. Temp	.525 @ 80F
Rmc @ Meas. Temp	.840 @ 80F
Source of Rmf / Rmc	MEASUREMENT
Rm @ BHT	.452 @ 124F
Time Circulation Stopped	4 HOURS
Time Logger on Bottom	6:30 A.M.
Maximum Recorded Temperature	124F
Equipment Number	3802
Location	HAYS, KANSAS
Recorded By	COLE ROBBEN
Witnessed By	TIM PRIEST

<<< Fold Here >>>

All interpretations are opinions based on inferences from electrical or other measurements and we cannot and do not guarantee the accuracy or correctness of any interpretation, and we shall not, except in the case of gross or willful negligence on our part, be liable or responsible for any loss, costs, damages, or expenses incurred or sustained by anyone resulting from any interpretation made by any of our officers, agents or employees. These interpretations are also subject to our general terms and conditions set out in our current Price Schedule.

Comments

THANK YOU FOR USING ELI WIRELINE SERVICES, HAYS, KS. (785) 628-6395

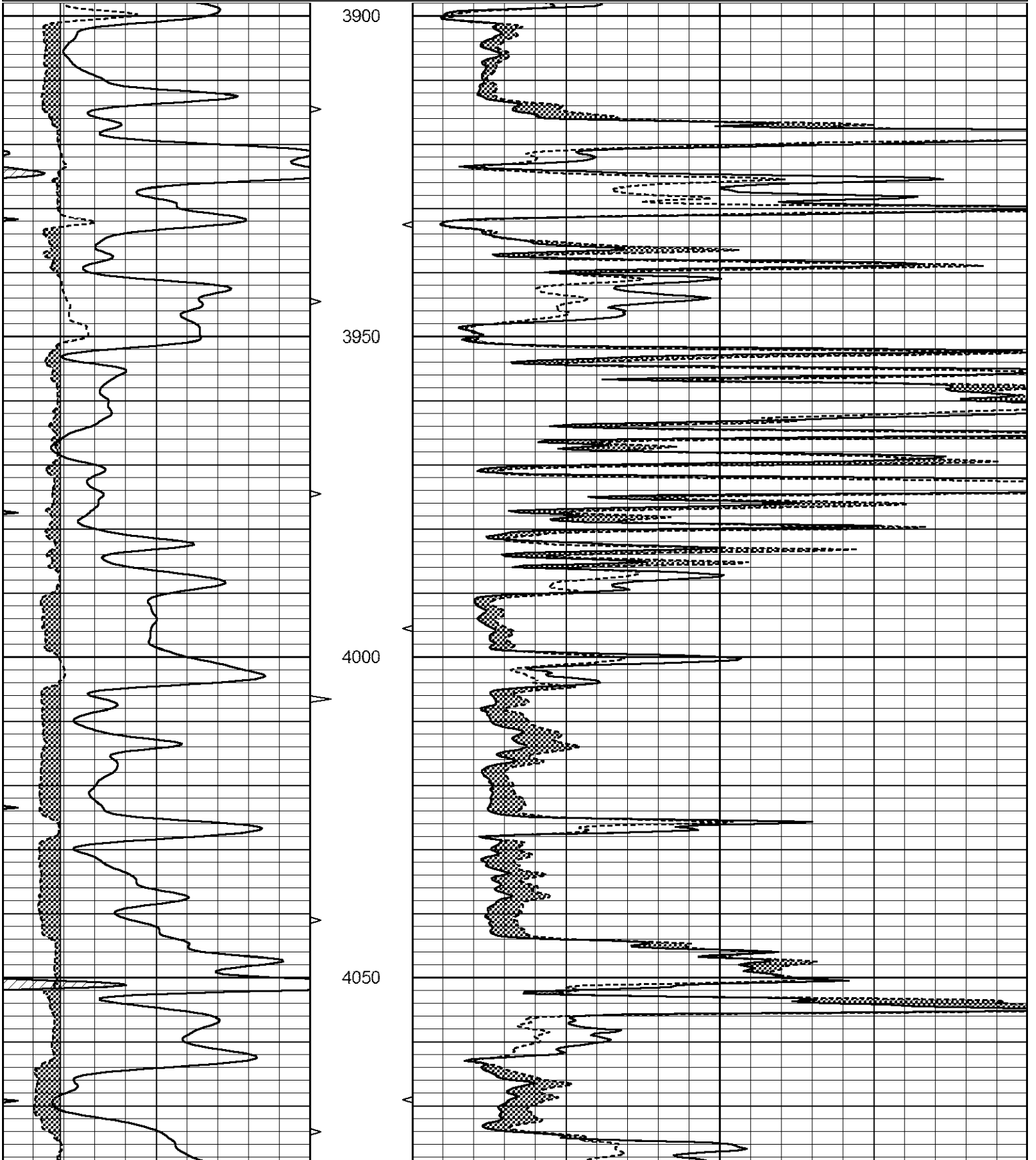
DIRECTIONS:
 FROM I70/BREWSTER GO SOUTH ON COUNTY ROAD 2 FOR TWO MILES TO CURVE, WEST TWO MILES, NORTH INTO

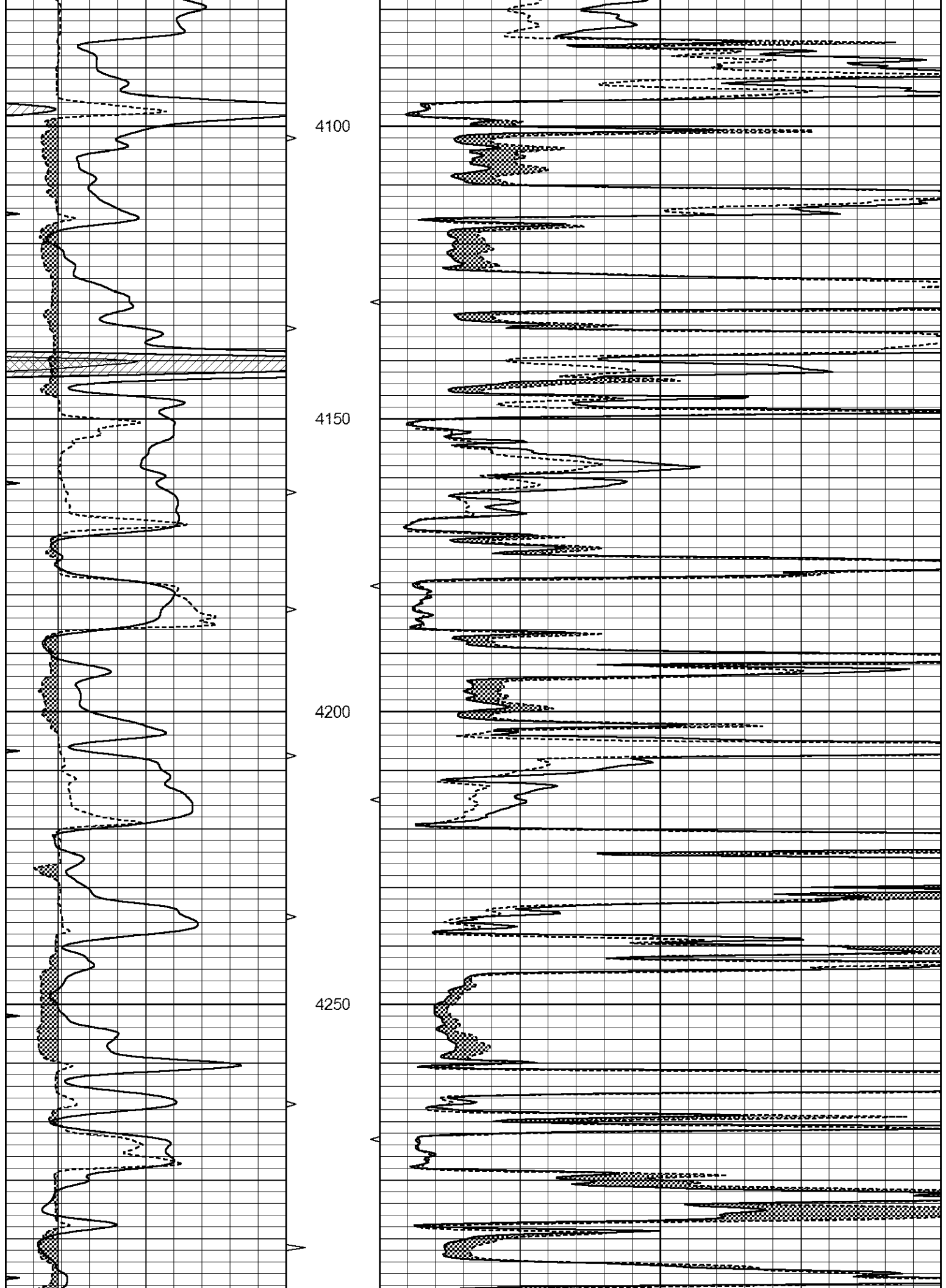


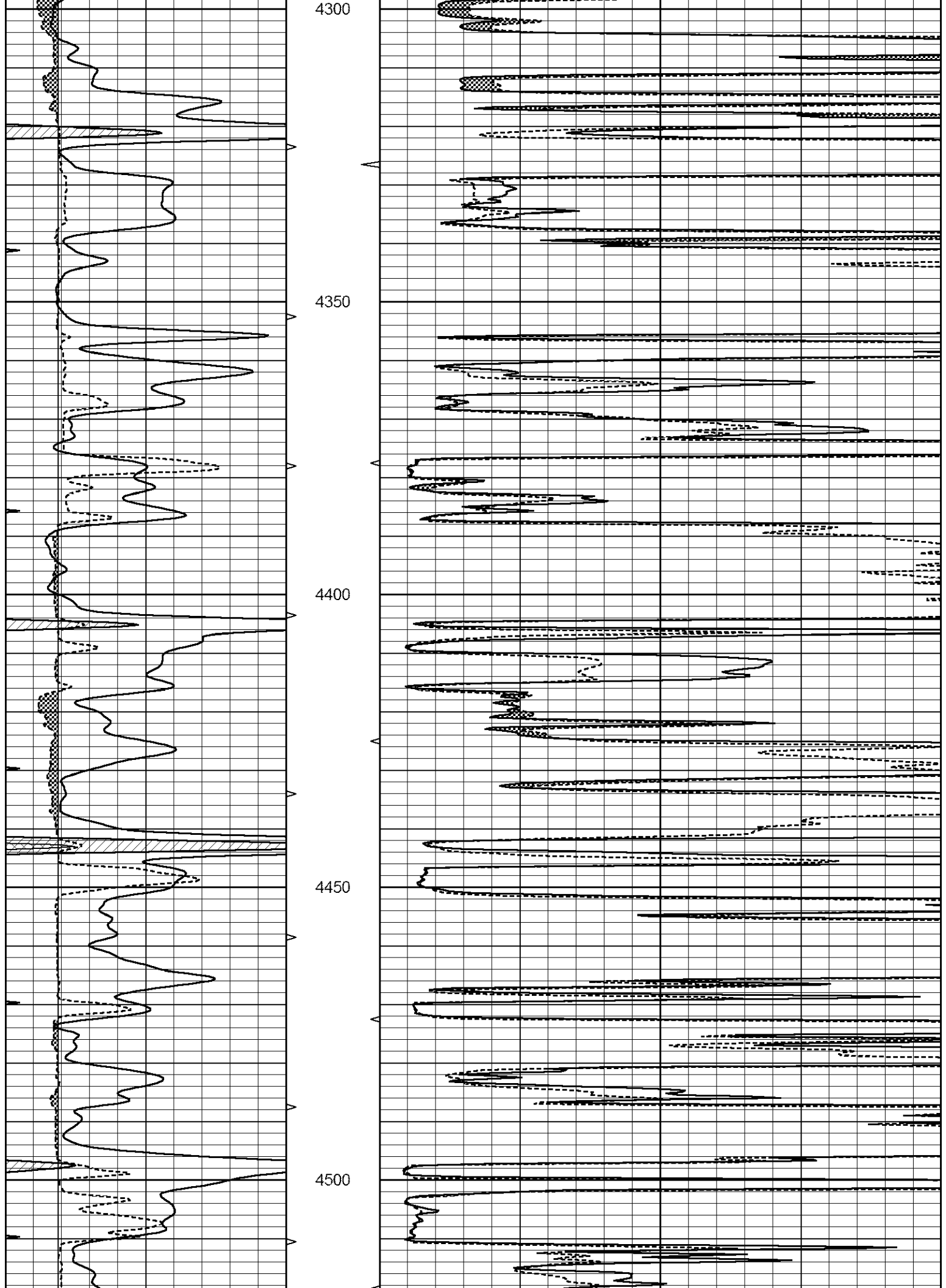
MAIN SECTION

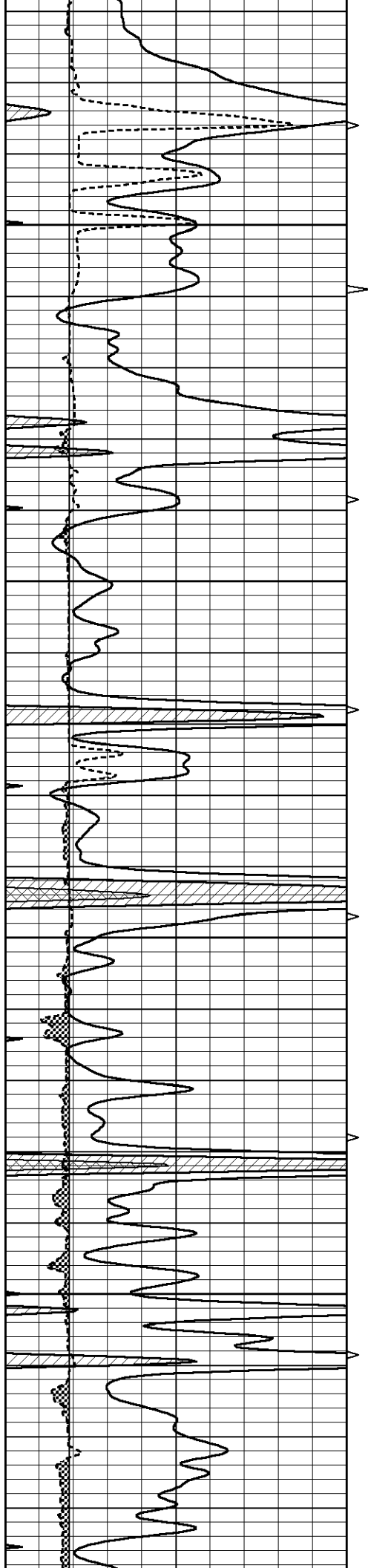
Database File 7392pe.db
 Dataset Pathname pass7D
 Presentation Format _micro
 Dataset Creation Thu Dec 15 07:53:26 2022
 Charted by Depth in Feet scaled 1:240

0	GAMMA RAY (GAPI)	150	ABHV	0	MEL1.5 (Ohm-m)	40
6	CALIPER (in)	16	10 (ft3)	0	MEL2.0 (Ohm-m)	40
0	MINMK	20	TBHV			
			0 (ft3)	10		







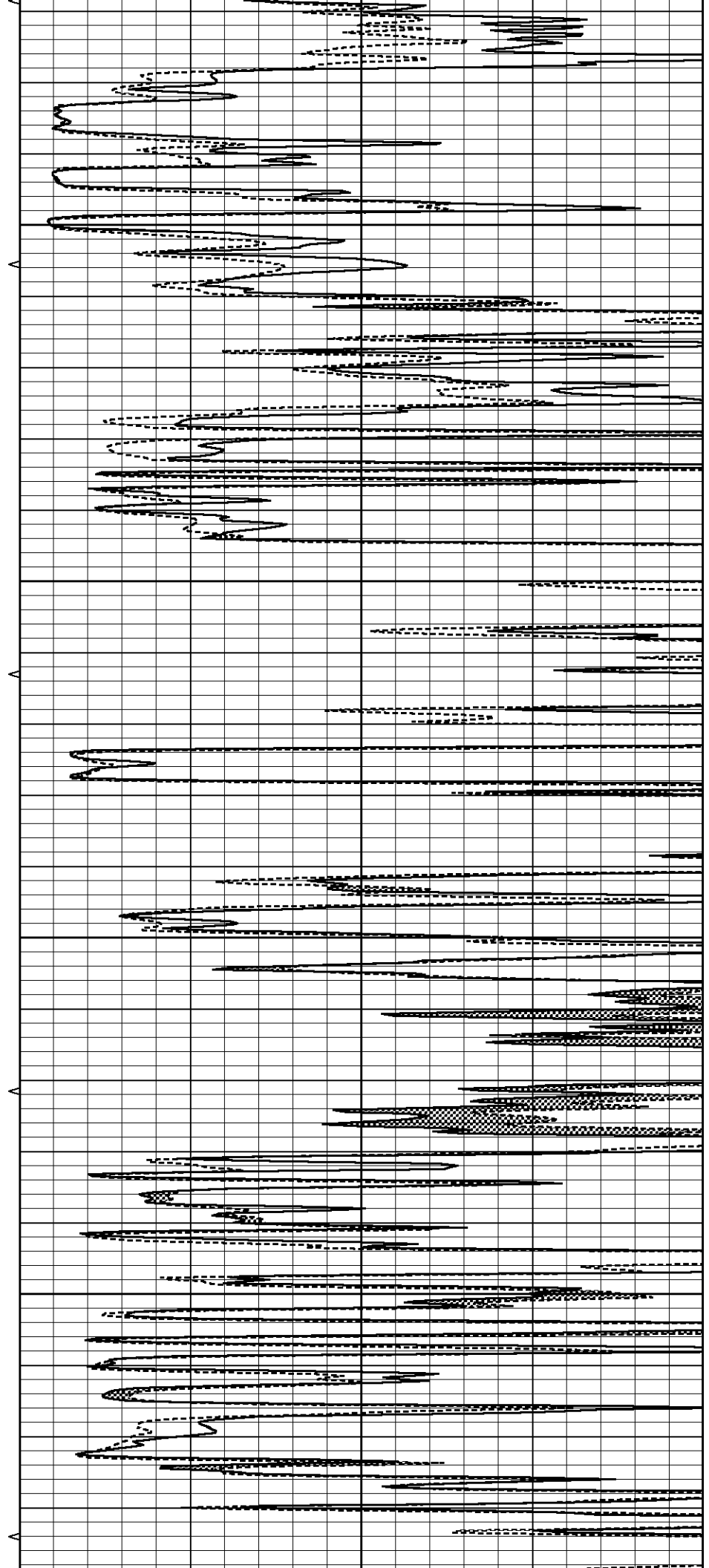


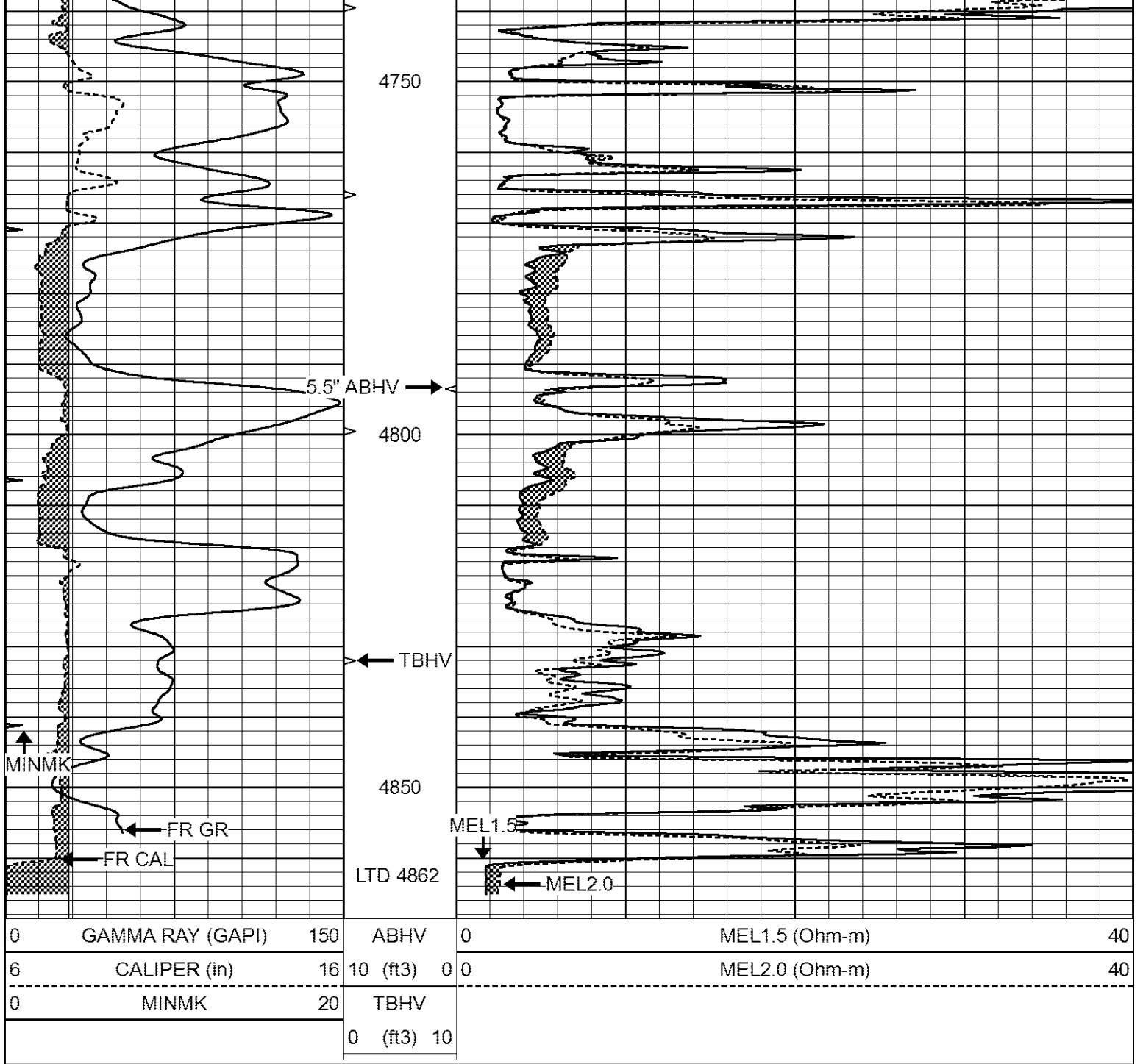
4550

4600

4650

4700





REPEAT SECTION

Database File 7392pe.db
 Dataset Pathname pass6R
 Presentation Format _micro
 Dataset Creation Thu Dec 15 07:42:38 2022
 Charted by Depth in Feet scaled 1:240

0	GAMMA RAY (GAPI)	150	ABHV	0	MEL1.5 (Ohm-m)	40
6	CALIPER (in)	16	10 (ft3)	0	MEL2.0 (Ohm-m)	40
0	MINMK	20	TBHV			
			0 (ft3)	10		



