



**COMPENSATED
DENSITY / NEUTRON
PE LOG**

Company TRANS PACIFIC OIL CORP.
Well DD FARMS - SIRUTA UNIT #1-2
Field WILDCAT
County THOMAS
State KANSAS

Company TRANS PACIFIC OIL CORPORATION
Well DD FARMS - SIRUTA UNIT #1-2
Field WILDCAT
County THOMAS State KANSAS

Location: API #: 15-193-21109-0000
 137' FSL & 410' FEL
 SW - SE - SE - SE
Permanent Datum GROUND LEVEL Elevation 3141
Log Measured From KELLY BUSHING 8' A.G.L.
Drilling Measured From KELLY BUSHING
 SEC 2 TWP 10S RGE 33W
Other Services
DILMEL
Elevation
K.B. 3149
D.F. 3147
G.L. 3141

Date	10/27/22
Run Number	ONE
Depth Driller	4745
Depth Logger	4748
Bottom Logged Interval	4724
Top Log Interval	3700
Casing Driller	8 5/8"@348'
Casing Logger	348
Bit Size	7 7/8"
Type Fluid in Hole	CHEMICAL MUD
Density / Viscosity	9.4/52
pH / Fluid Loss	10.5/7.2
Source of Sample	FLOWLINE
Rm @ Meas. Temp	1.40@70F
Rmf @ Meas. Temp	1.05@70F
Rmc @ Meas. Temp	1.68@70F
Source of Rmf / Rmc	MEASUREMENT
Rm @ BHT	.797@123F
Time Circulation Stopped	2.5 HOURS
Time Logger on Bottom	10:00 P.M.
Maximum Recorded Temperature	123F
Equipment Number	922339
Location	HAYS, KANSAS
Recorded By	JEFF LUEBBERS
Witnessed By	NICK HIXON

<<< Fold Here >>>

All interpretations are opinions based on inferences from electrical or other measurements and we cannot and do not guarantee the accuracy or correctness of any interpretation, and we shall not, except in the case of gross or willful negligence on our part, be liable or responsible for any loss, costs, damages, or expenses incurred or sustained by anyone resulting from any interpretation made by any of our officers, agents or employees. These interpretations are also subject to our general terms and conditions set out in our current Price Schedule.

15-193-21109-0000 Comments

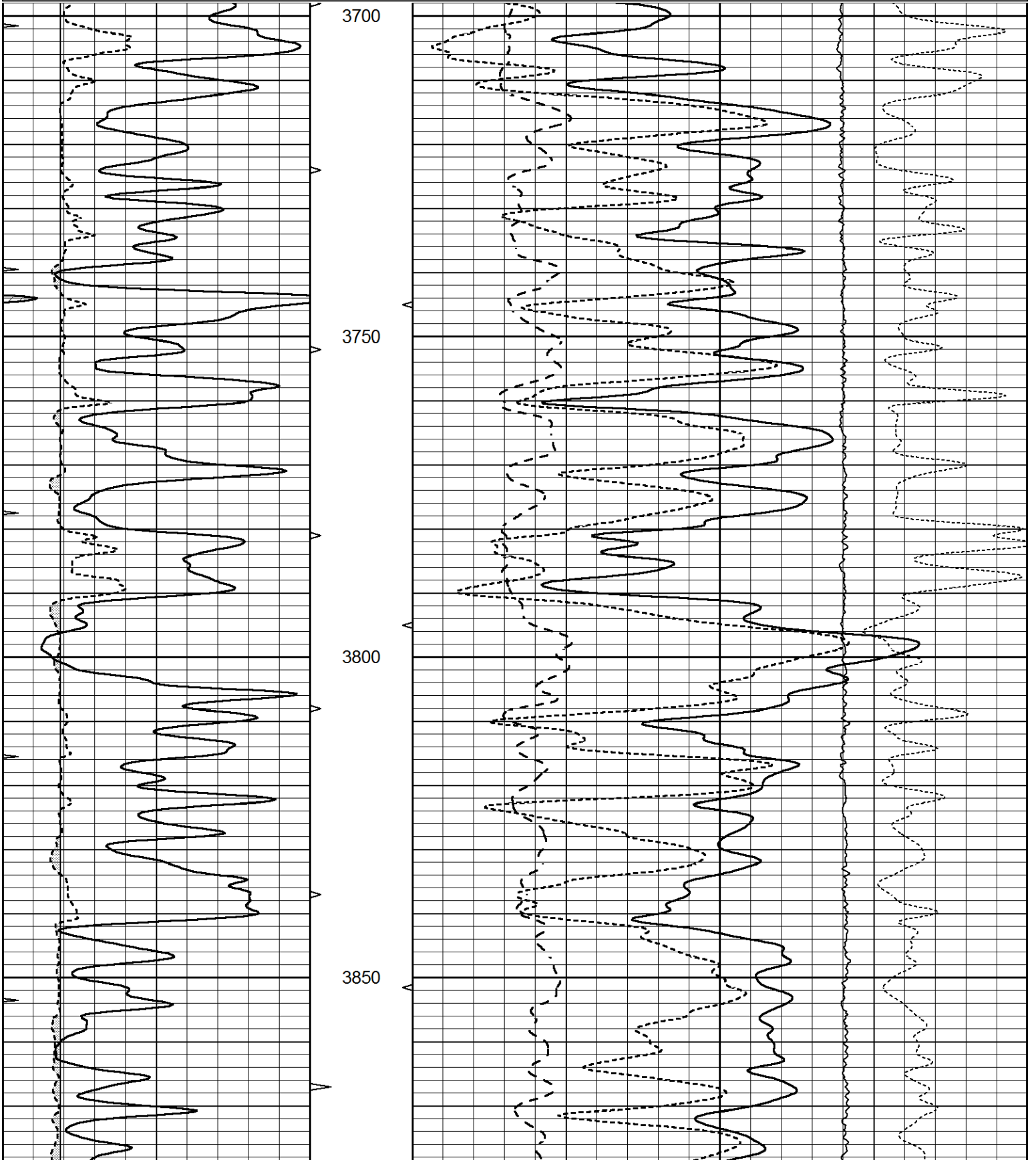
THANK YOU FOR USING ELI WIRELINE HAYS, KANSAS (785) 628-6395
DIRECTIONS
OAKLEY, KS., & I-70 (SECOND EXIT) 1N. ON HWY 83 TO "RD. F", 4W., N. INTO

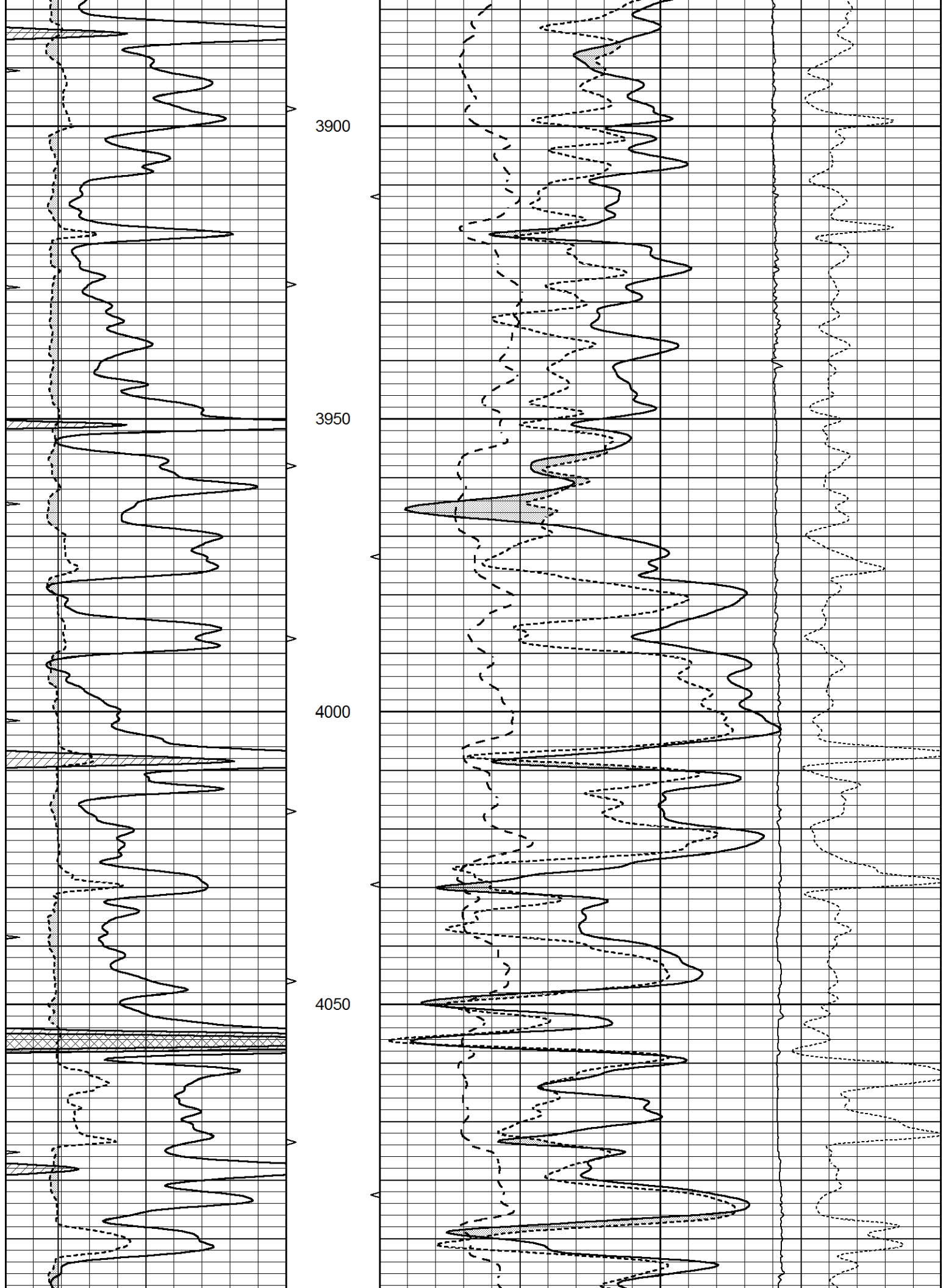


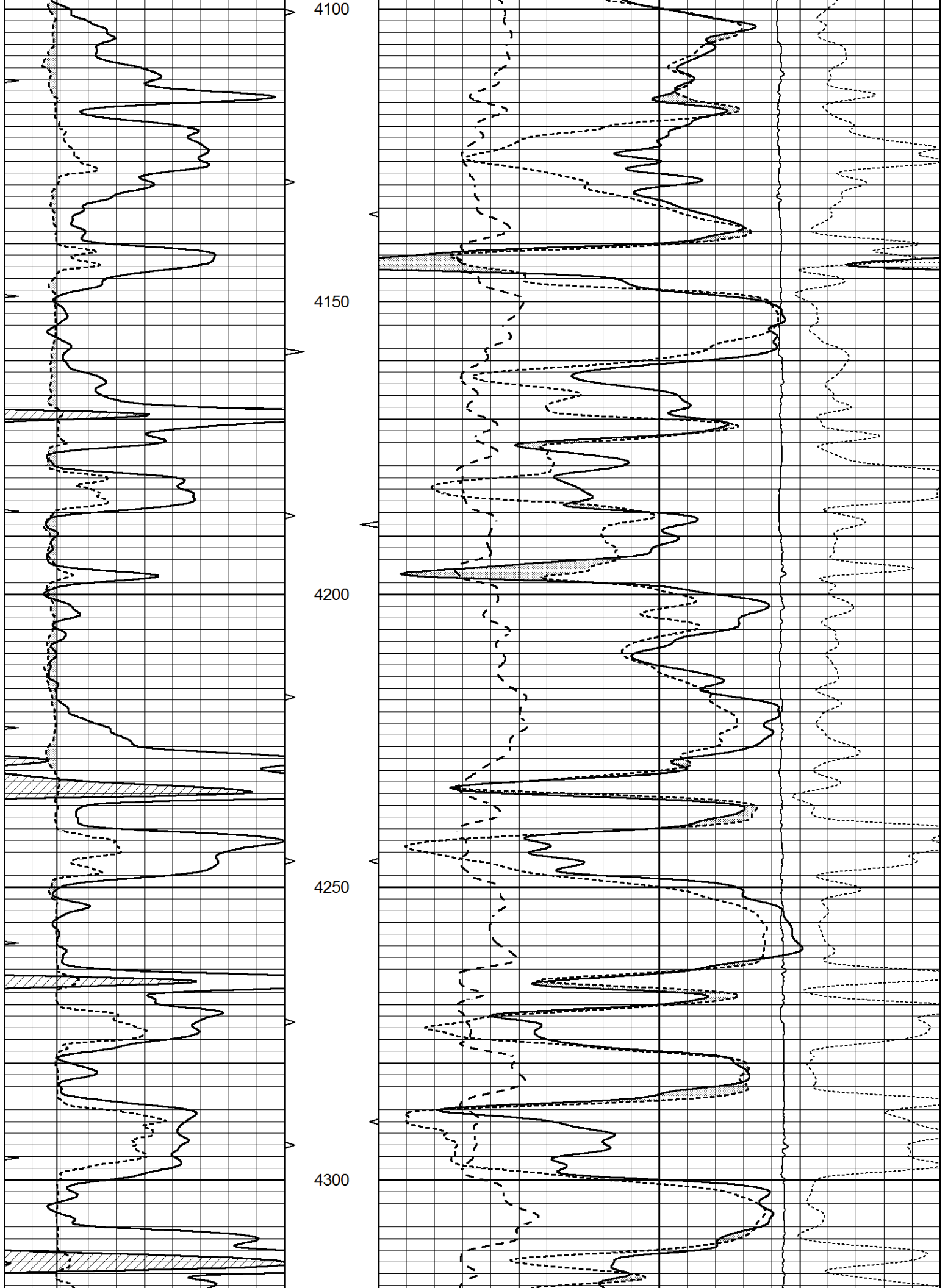
MAIN SECTION

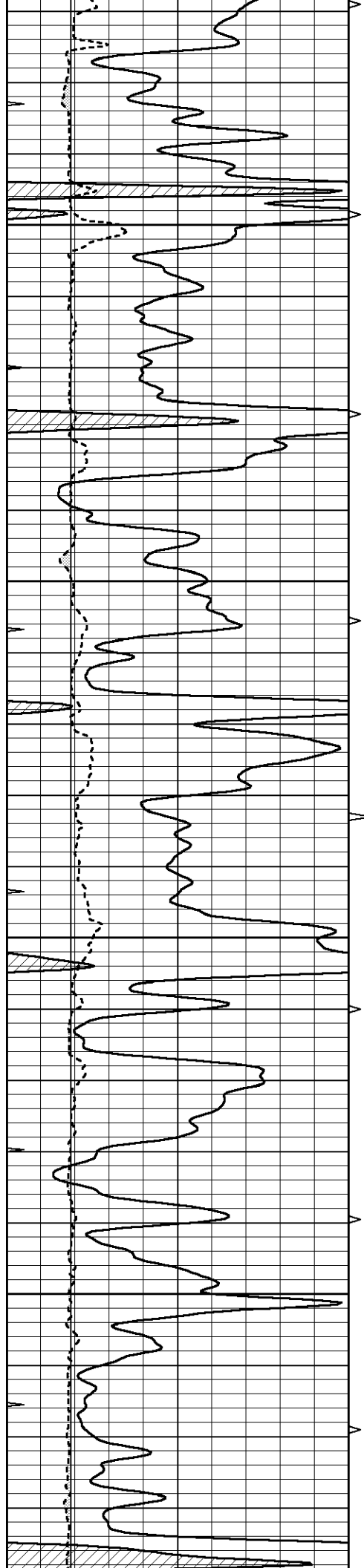
Database File 7254pe.db
 Dataset Pathname pass3.2M
 Presentation Format ldt_neu
 Dataset Creation Fri Oct 28 00:00:32 2022
 Charted by Depth in Feet scaled 1:240

0	GAMMA RAY (GAPI)	150	ABHV	30	COMPENSATED DENSITY (pu)				-10
6	CALIPER (in)	16	10 (ft3)	0	COMPENSATED NEUTRON (pu)				-10
0	MINMK	20	TBHV	0	PE	10	-0.25	CORRECTION (g/cc)	0.25
			0 (ft3)	10			0	LTEN (lb)	5000







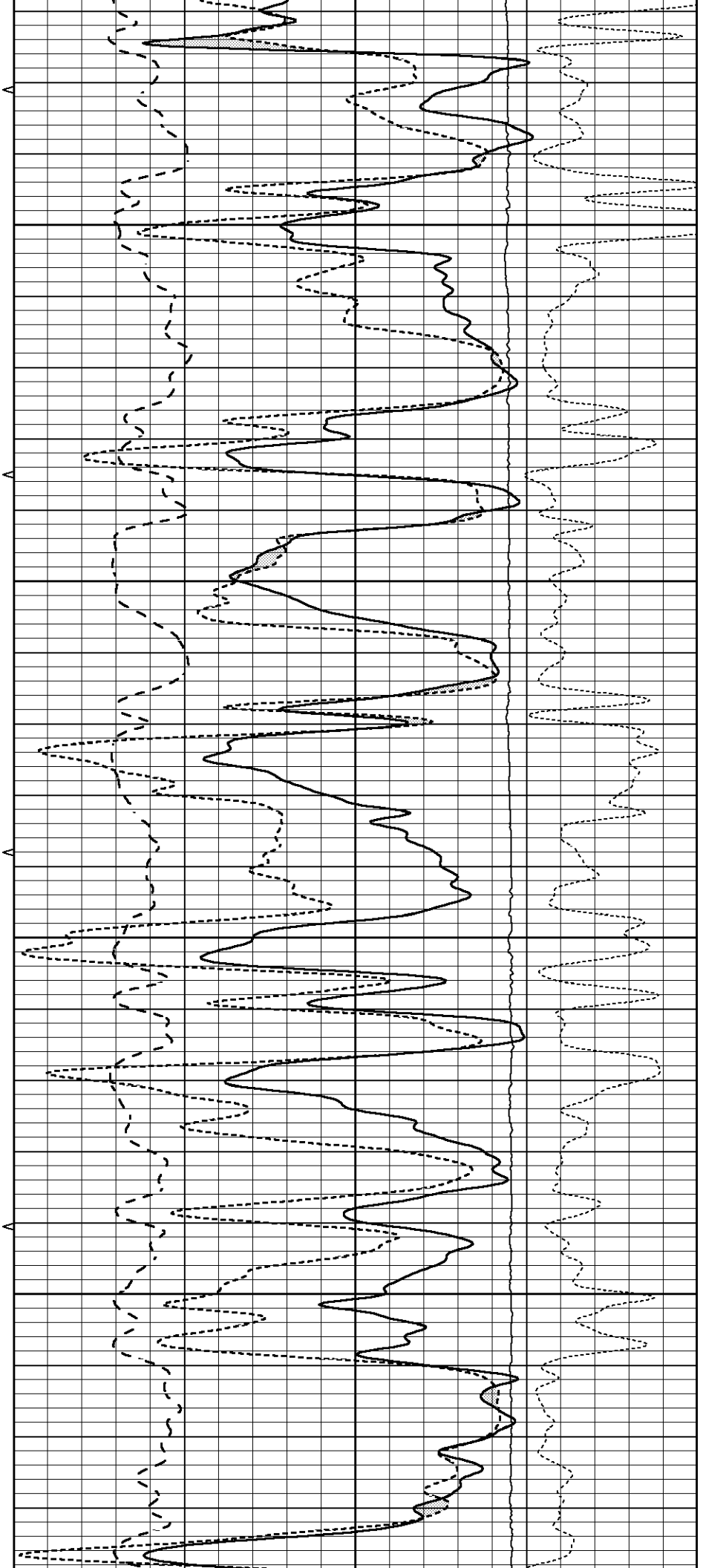


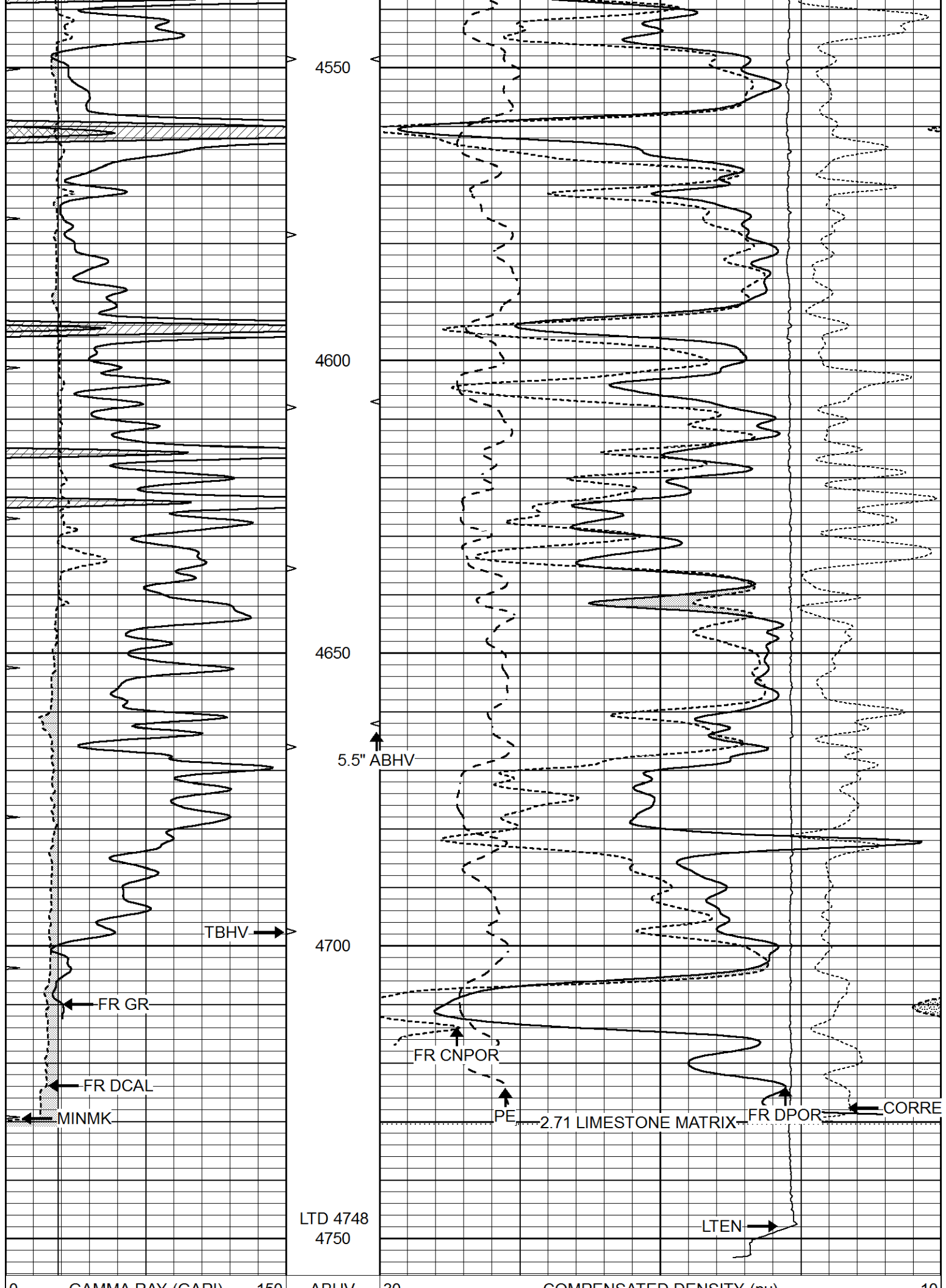
4350

4400

4450

4500





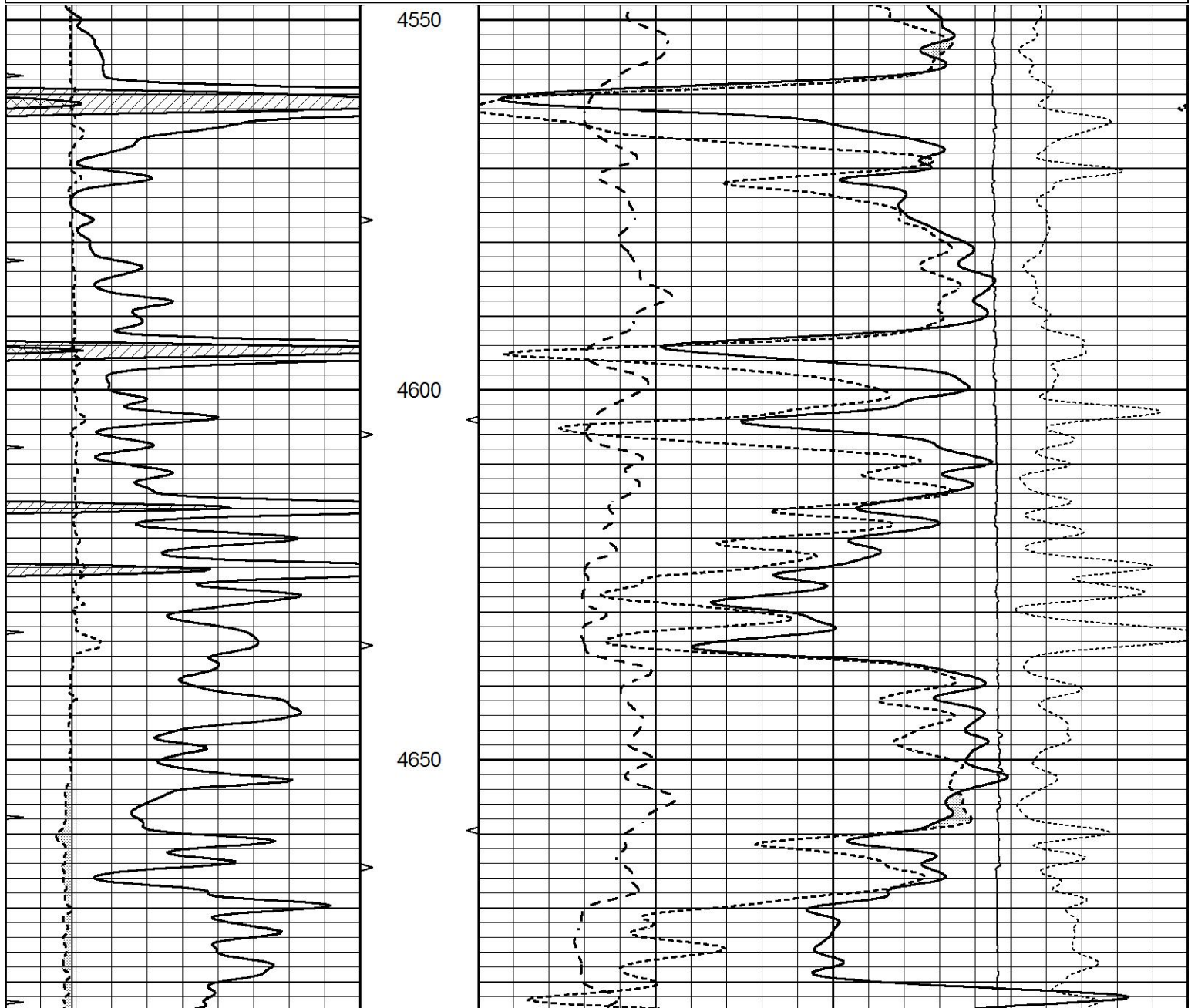
0	GAMMA RAY (GAPI)	150	ABHV	30	COMPENSATED DENSITY (pu)	-10			
6	CALIPER (in)	16	10 (ft3)	0	30	COMPENSATED NEUTRON (pu)	-10		
0	MINMK	20	TBHV	0	PE	10	-0.25 CORRECTION (g/cc)	0.25	
			0 (ft3)	10			0	LTEN (lb)	5000

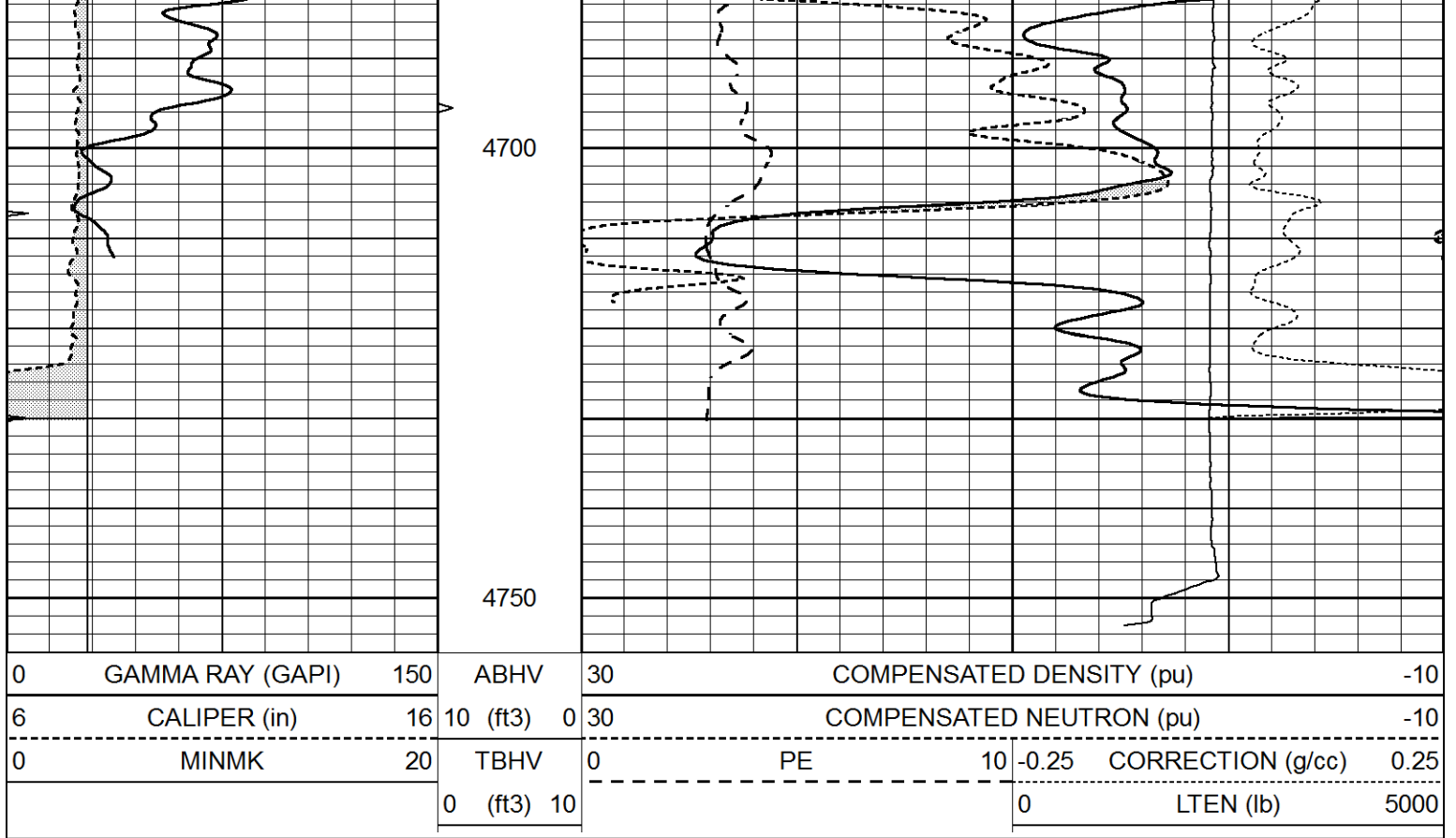


REPEAT SECTION

Database File 7254pe.db
 Dataset Pathname pass2.2R
 Presentation Format ldt_neu
 Dataset Creation Fri Oct 28 00:13:21 2022
 Charted by Depth in Feet scaled 1:240

0	GAMMA RAY (GAPI)	150	ABHV	30	COMPENSATED DENSITY (pu)	-10			
6	CALIPER (in)	16	10 (ft3)	0	30	COMPENSATED NEUTRON (pu)	-10		
0	MINMK	20	TBHV	0	PE	10	-0.25 CORRECTION (g/cc)	0.25	
			0 (ft3)	10			0	LTEN (lb)	5000





Calibration Report

Database File 7254pe.db
 Dataset Pathname pass3.2M
 Dataset Creation Fri Oct 28 00:00:32 2022

Dual Induction Calibration Report

Serial-Model: PROBE8-DILG
 Surface Cal Performed: Thu Oct 27 22:40:33 2022
 Downhole Cal Performed: Mon Jul 28 11:08:27 2008
 After Survey Verification Performed: Mon Jul 28 11:08:27 2008

Surface Calibration

Loop:	Readings				References			Results	
	Air	Loop			Air	Loop		m	b
Deep	0.015	0.648	V	0.000	400.000	mmho/m	640.000	0.000	
Medium	0.029	0.796	V	0.000	464.000	mmho/m	625.000	-10.000	
Internal:	Zero	Cal		Zero	Cal		m	b	
Deep	0.017	0.657	V	0.000	400.000	mmho/m	625.153	-10.619	
Medium	0.016	0.757	V	0.000	464.000	mmho/m	625.992	-9.739	

Downhole Calibration

	Readings				References			Results	
	Zero	Cal			Zero	Cal		m'	b'
Deep	0.000	0.000	mmho/m	2.011	405.777	mmho/m	1.000	0.000	
Medium	0.000	0.000	mmho/m	7.590	503.393	mmho/m	1.000	0.000	
LL3		7.500	V		1500.000	Ohm-m			
		0.000	V		20.000	Ohm-m			
		-7.200	V		3800.000	mmho-m			

After Survey Verification

	Readings			Targets			Results	
	Zero	Cal		Zero	Cal		m'	b'
Deep	0.000	0.000	mmho/m	0.000	0.000	mmho/m	0.000	0.000
Medium	0.000	0.000	mmho/m	0.000	0.000	mmho/m	0.000	0.000
LL3		1.000	Ohm-m		1.000	Ohm-m		
		0.000	Ohm-m		0.000	Ohm-m		
		1.000	mmho-m		1.000	mmho-m		

Litho Density Calibration Report
Serial: 004 Model: PRB

Master Calibration

Performed Tue Aug 02 11:29:35 2022

	Background	Magnesium	Aluminum	Aluminum+Fe	
Window 1	1154.2	10019.5	3137.9	2795.6	cps
Window 2	1054.4	8597.6	2733.4	2469.5	cps
Window 3	902.3	5241.4	1832.1	1719.3	cps
Window 4	251.9	261.1	255.8	252.9	cps
Long Space	0.0	7543.2	1679.0	1415.0	cps
Short Space	4.4	2049.3	1321.7	1116.8	cps
Rho		1.7100	2.5900	0.0000	g/cc
Pe		2.0000	2.7500	5.7900	
Rib Angle	: 43.7	Rib Slope	: 0.957	Density/Spine Ratio	: 0.562
Spine Angle	: 73.7	Spine Slope	: 3.426	Spine Intercept	: -17.2

Before Survey Verification

Performed Wed Dec 31 18:00:00 1969

Window 1	0.0	0.0	0.0	0.0	cps
Window 2	0.0	0.0	0.0	0.0	cps
Window 3	0.0	0.0	0.0	0.0	cps
Window 4	0.0	0.0	0.0	0.0	cps
Long Space	0.0	0.0	0.0	0.0	cps
Short Space	0.0	0.0	0.0	0.0	cps
Measured Rho		0.0000	0.0000	0.0000	g/cc
Measured Correction		0.0000	0.0000	0.0000	g/cc
Measured Pe			0.0000	0.0000	

After Survey Verification

Performed Wed Dec 31 18:00:00 1969

Window 1	0.0	0.0	0.0	0.0	cps
Window 2	0.0	0.0	0.0	0.0	cps
Window 3	0.0	0.0	0.0	0.0	cps
Window 4	0.0	0.0	0.0	0.0	cps
Long Space	0.0	0.0	0.0	0.0	cps
Short Space	0.0	0.0	0.0	0.0	cps
Measured Rho		0.0000	0.0000	0.0000	g/cc
Measured Correction		0.0000	0.0000	0.0000	g/cc
Measured Pe			0.0000	0.0000	

Compensated Neutron Calibration Report

Serial Number: 070808PMC
Tool Model: NABORS

PRE-SURVEY VERIFICATION

Detector	Readings	Measured	Target
----------	----------	----------	--------

Short Space	cps		
Long Space	cps	pu	pu

POST-SURVEY VERIFICATION			
Detector	Readings	Measured	Target
Short Space	cps		
Long Space	cps	pu	pu

Gamma Ray Calibration Report			
------------------------------	--	--	--

Serial Number:	070558		
Tool Model:	OPEN_GR		
Performed:	Wed Oct 19 09:38:21 2022		
Calibrator Value:	1.0	GAPI	
Background Reading:	0.0	cps	
Calibrator Reading:	1.0	cps	
Sensitivity:	0.3000	GAPI/cps	