

MICRO LOG



Company TRANS PACIFIC OIL CORPORATION
 Well DD FARMS - SIRUTA UNIT #1-2
 Field WILDCAT
 County THOMAS State KANSAS

Location: 137' FSL & 410' FEL
 SW - SE - SE - SE
 API #: 15-193-21109-0000
 SEC 2 TWP 10S RGE 33W
 Permanent Datum GROUND LEVEL Elevation 3141
 Log Measured From KELLY BUSHING 8' A.G.L.
 Drilling Measured From KELLY BUSHING
 Other Services CDL/CNL/PE DIL
 Elevation K.B. 3149
 D.F. 3147
 G.L. 3141

Date	10/28/22
Run Number	TWO
Depth Driller	4745
Depth Logger	4748
Bottom Logged Interval	4746
Top Log Interval	3700
Casing Driller	8 5/8"@348'
Casing Logger	348
Bit Size	7 7/8"
Type Fluid in Hole	CHEMICAL MUD
Density / Viscosity	9.4/52
PH / Fluid Loss	10.5/7.2
Source of Sample	FLOWLINE
Rm @ Meas. Temp	1.40@70F
Rmf @ Meas. Temp	1.05@70F
Rmc @ Meas. Temp	1.68@70F
Source of Rmf / Rmc	MEASUREMENT
Rm @ BHT	.797@123F
Time Circulation Stopped	4 HOURS
Time Logger on Bottom	12:00 A.M.
Maximum Recorded Temperature	123F
Equipment Number	922339
Location	HAYS, KANSAS
Recorded By	JEFF LUEBBERS
Witnessed By	NICK HIXON

<<< Fold Here >>>

All interpretations are opinions based on inferences from electrical or other measurements and we cannot and do not guarantee the accuracy or correctness of any interpretation, and we shall not, except in the case of gross or willful negligence on our part, be liable or responsible for any loss, costs, damages, or expenses incurred or sustained by anyone resulting from any interpretation made by any of our officers, agents or employees. These interpretations are also subject to our general terms and conditions set out in our current Price Schedule.

15-193-21109-0000 Comments

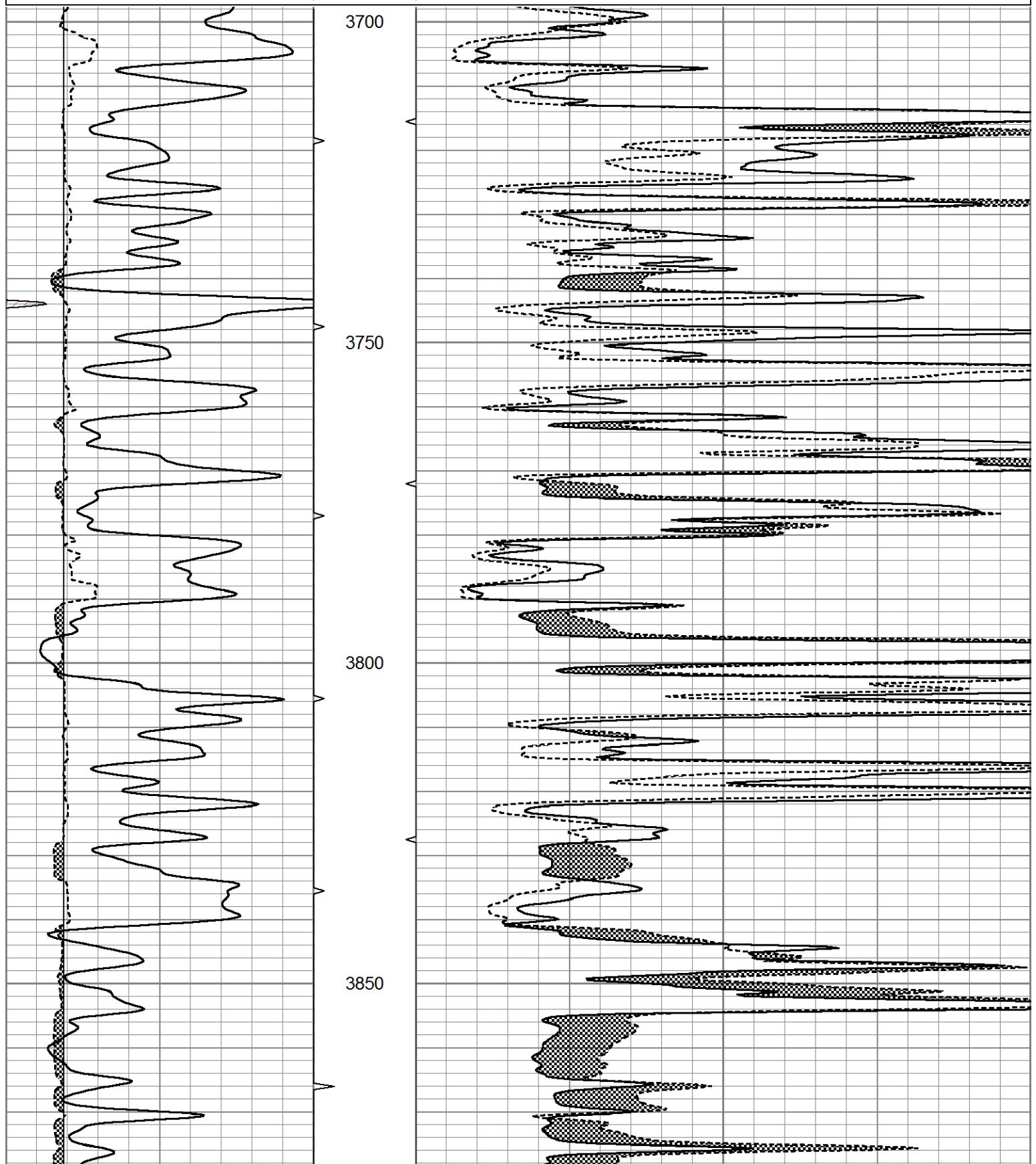
THANK YOU FOR USING ELI WIRELINE HAYS, KANSAS (785) 628-6395
 DIRECTIONS
 OAKLEY, KS., & I-70 (SECOND EXIT) 1N. ON HWY 83 TO "RD. F", 4W., N. INTO

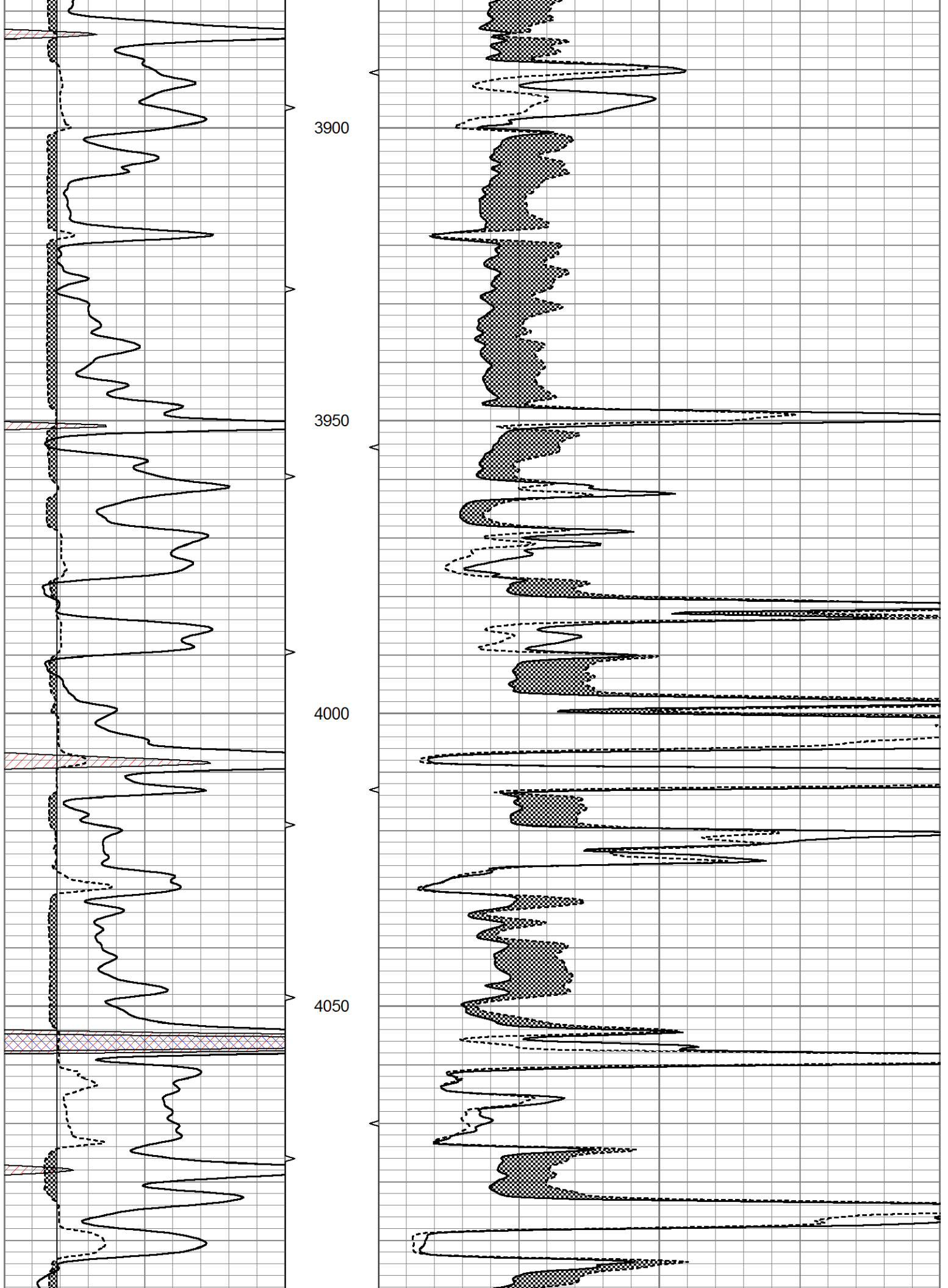


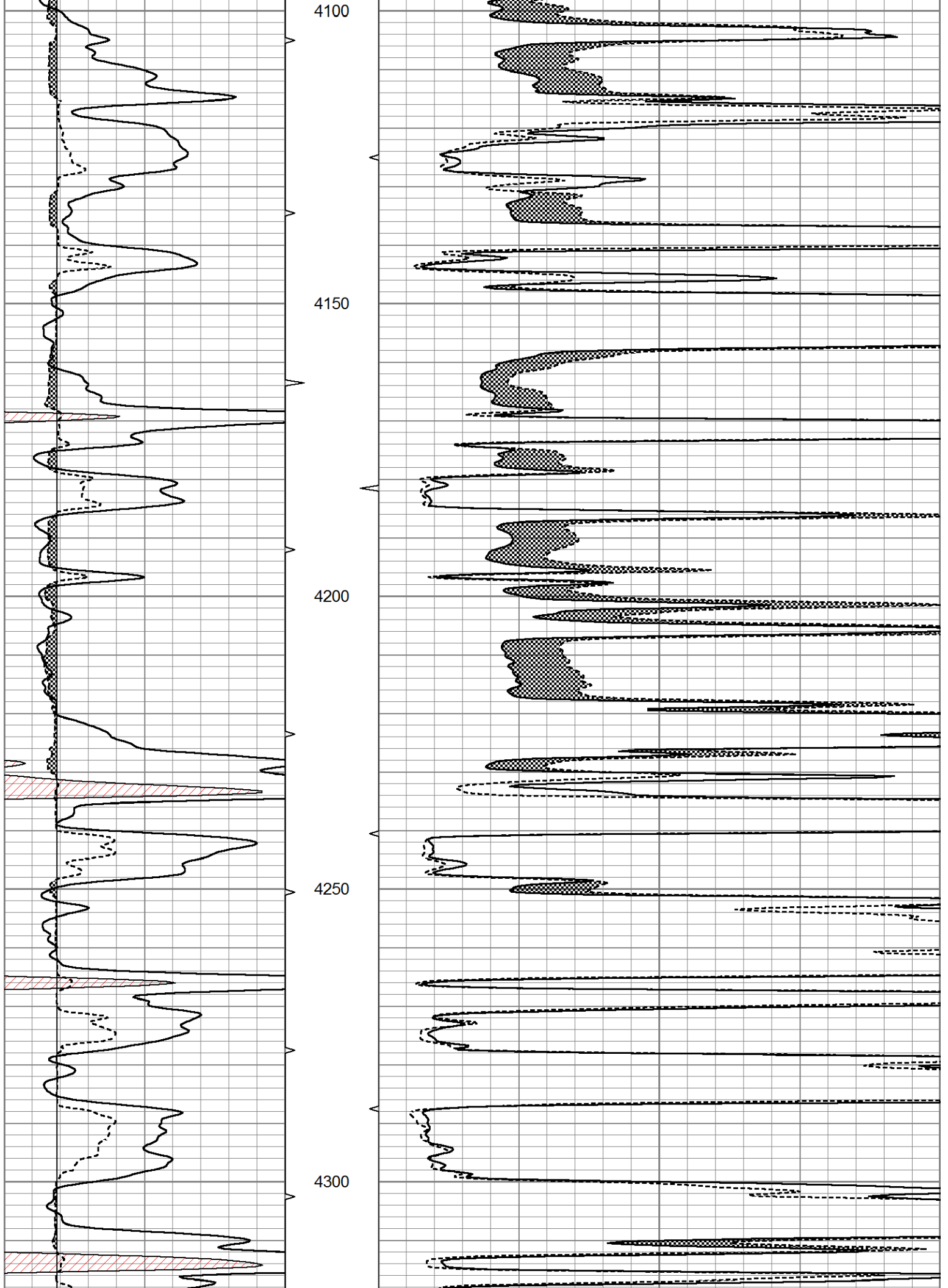
MAIN SECTION

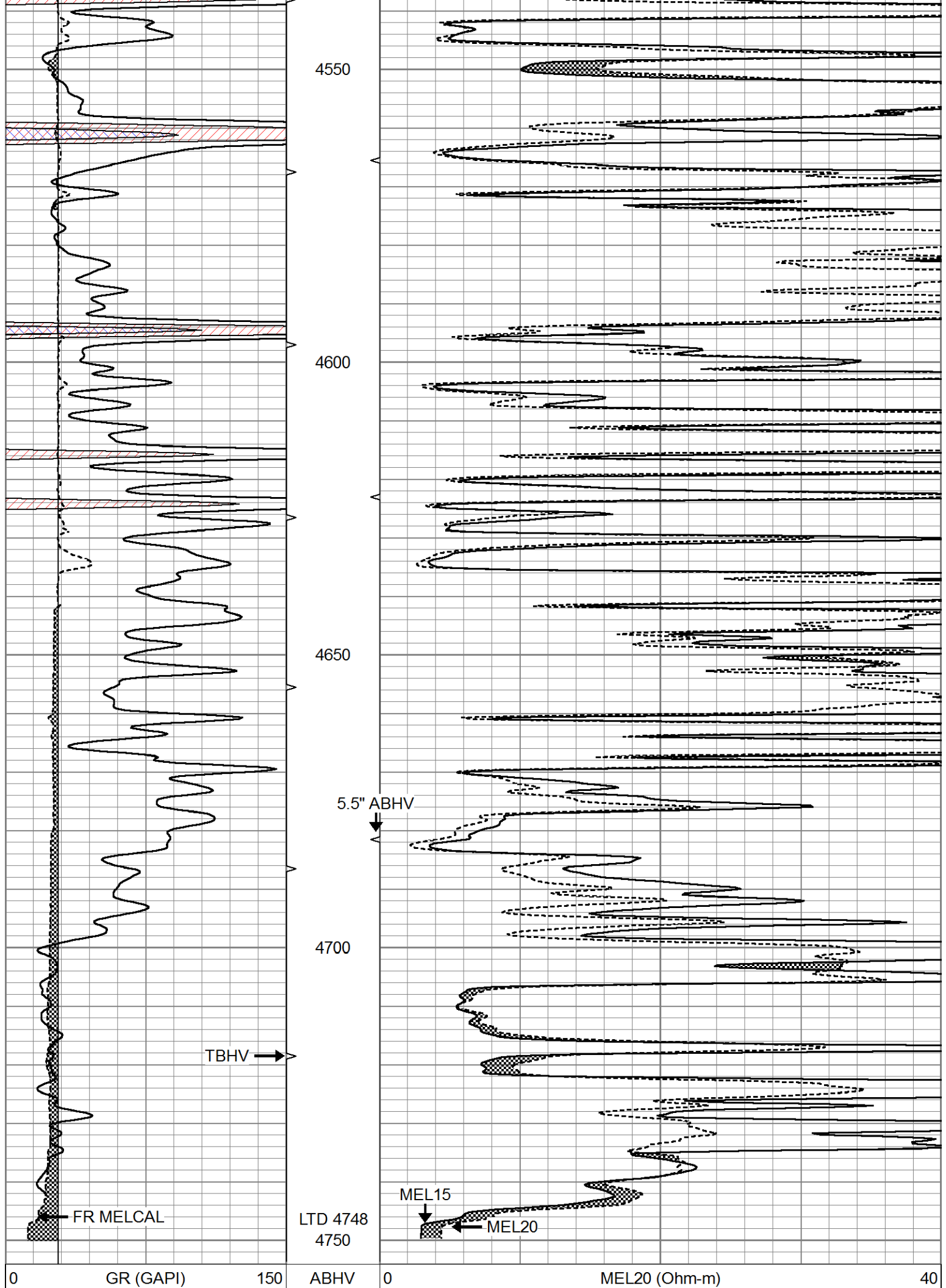
Database File 7254pe.db
 Dataset Pathname pass6.1
 Presentation Format micro
 Dataset Creation Fri Oct 28 01:15:40 2022
 Charted by Depth in Feet scaled 1:240

0	GR (GAPI)	150	ABHV	0	MEL20 (Ohm-m)	40
6	MELCAL (in)	16	10 (ft3)	0	MEL15 (Ohm-m)	40
			ABHV			
			0 (ft3)	10		









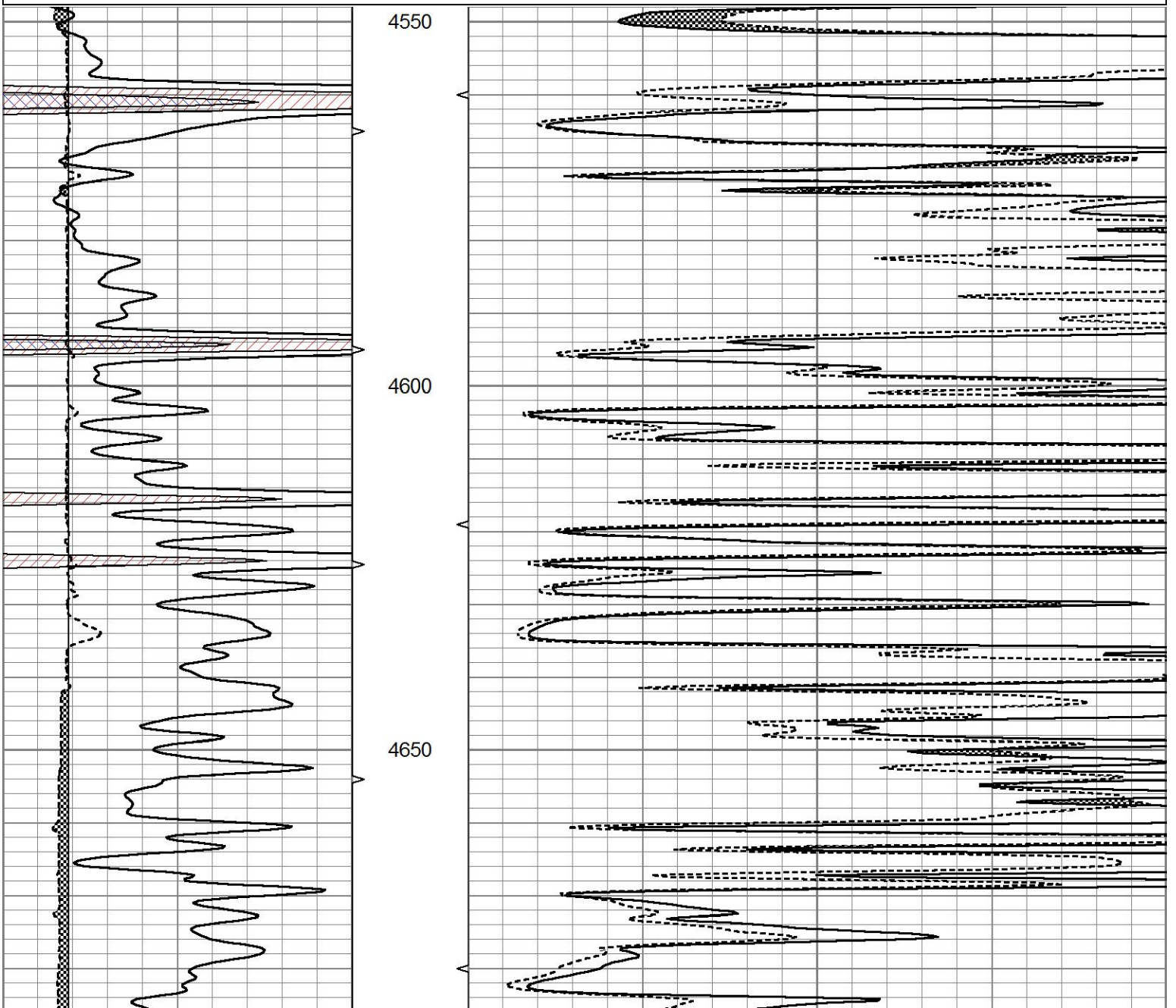
6	MELCAL (in)	16	10 (ft3)	0 0	MEL15 (Ohm-m)	40
			ABHV			
			0 (ft3)	10		

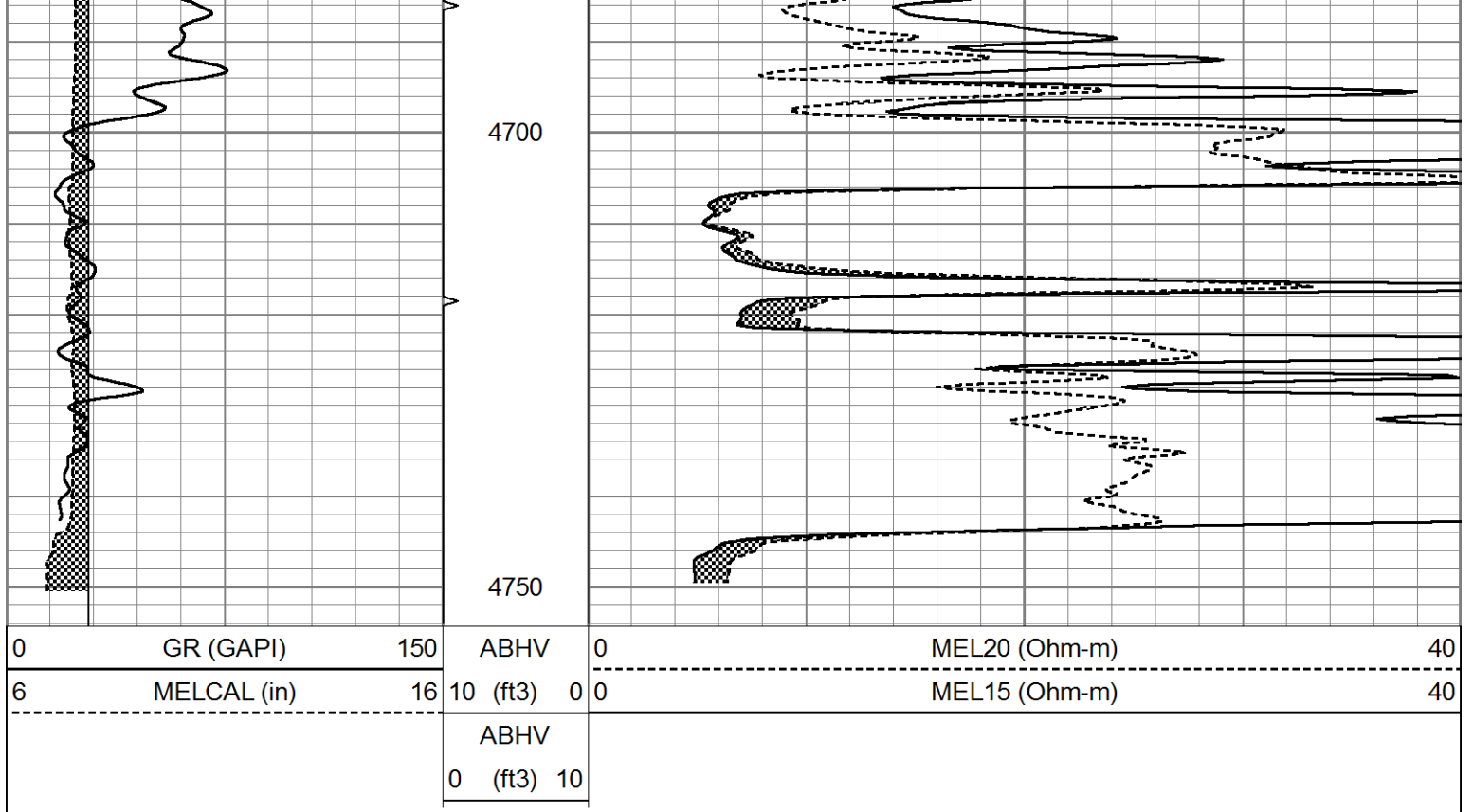


REPEAT SECTION

Database File 7254pe.db
 Dataset Pathname pass5.2
 Presentation Format micro
 Dataset Creation Fri Oct 28 01:10:01 2022
 Charted by Depth in Feet scaled 1:240

0	GR (GAPI)	150	ABHV	0	MEL20 (Ohm-m)	40
6	MELCAL (in)	16	10 (ft3)	0 0	MEL15 (Ohm-m)	40
			ABHV			
			0 (ft3)	10		





Calibration Report

Database File 7254pe.db
 Dataset Pathname pass6.1
 Dataset Creation Fri Oct 28 01:15:40 2022

MICRO Calibration Report

Serial Number: 070911
 Tool Model: ProbeN
 Performed: Fri Oct 28 01:14:04 2022

Caliper Calibration: Gain=5.161 Offset=1.548

References	Low Cal	High Cal
Readings	8.000	16.000
	1.250	2.800

1.5" Calibration: Gain=35.000 Offset=0.500

References	Low Cal	High Cal
Readings	0.000	20.000
	0.001	1.291

2" Calibration: Gain=50.000 Offset=-0.500

References	Low Cal	High Cal
Readings	0.000	20.000
	0.003	1.103

Gamma Ray Calibration Report

Serial Number: 070559
 Tool Model: OPEN_GR
 Performed: Sat Oct 08 03:50:38 2022

Calibrator Value: 1.0 GAPI

Background Reading: 0.0 cps

Calibrator Reading: 1.0 cps

Calibrator Reading.

1.0

cps

Sensitivity:

0.3200

GAPI/cps