



# DUAL INDUCTION LOG

Company TRANS PACIFIC OIL CORP.  
 Well DD FARMS - SIRUTA UNIT #1-2  
 Field WILDCAT  
 County THOMAS  
 State KANSAS

Company TRANS PACIFIC OIL CORPORATION  
 Well DD FARMS - SIRUTA UNIT #1-2  
 Field WILDCAT  
 County THOMAS State KANSAS

Location: 137' FSL & 410' FEL  
 SW - SE - SE - SE  
 API #: 15-193-21109-0000  
 SEC 2 TWP 10S RGE 33W  
 Permanent Datum GROUND LEVEL Elevation 3141  
 Log Measured From KELLY BUSHING 8' A.G.L.  
 Drilling Measured From KELLY BUSHING  
 Other Services CDL/CNL/PE MEL  
 Elevation K.B. 3149  
 D.F. 3147  
 G.L. 3141

Date	10/27/22
Run Number	ONE
Depth Driller	4745
Depth Logger	4748
Bottom Logged Interval	4746
Top Log Interval	00
Casing Driller	8 5/8"@348'
Casing Logger	348
Bit Size	7 7/8"
Type Fluid in Hole	CHEMICAL MUD
Density / Viscosity	9.4/52
pH / Fluid Loss	10.5/7.2
Source of Sample	FLOWLINE
Rm @ Meas. Temp	1.40@70F
Rmf @ Meas. Temp	1.05@70F
Rmc @ Meas. Temp	1.68@70F
Source of Rmf / Rmc	MEASUREMENT
Rm @ BHT	.797@123F
Time Circulation Stopped	2.5 HOURS
Time Logger on Bottom	10:00 P.M.
Maximum Recorded Temperature	123F
Equipment Number	922339
Location	HAYS, KANSAS
Recorded By	JEFF LUEBBERS
Witnessed By	NICK HIXON

<<< Fold Here >>>

All interpretations are opinions based on inferences from electrical or other measurements and we cannot and do not guarantee the accuracy or correctness of any interpretation, and we shall not, except in the case of gross or willful negligence on our part, be liable or responsible for any loss, costs, damages, or expenses incurred or sustained by anyone resulting from any interpretation made by any of our officers, agents or employees. These interpretations are also subject to our general terms and conditions set out in our current Price Schedule.

15-193-21109-0000 Comments

THANK YOU FOR USING ELI WIRELINE HAYS, KANSAS (785) 628-6395  
 DIRECTIONS  
 OAKLEY, KS., & I-70 (SECOND EXIT) 1N. ON HWY 83 TO "RD. F", 4W., N. INTO

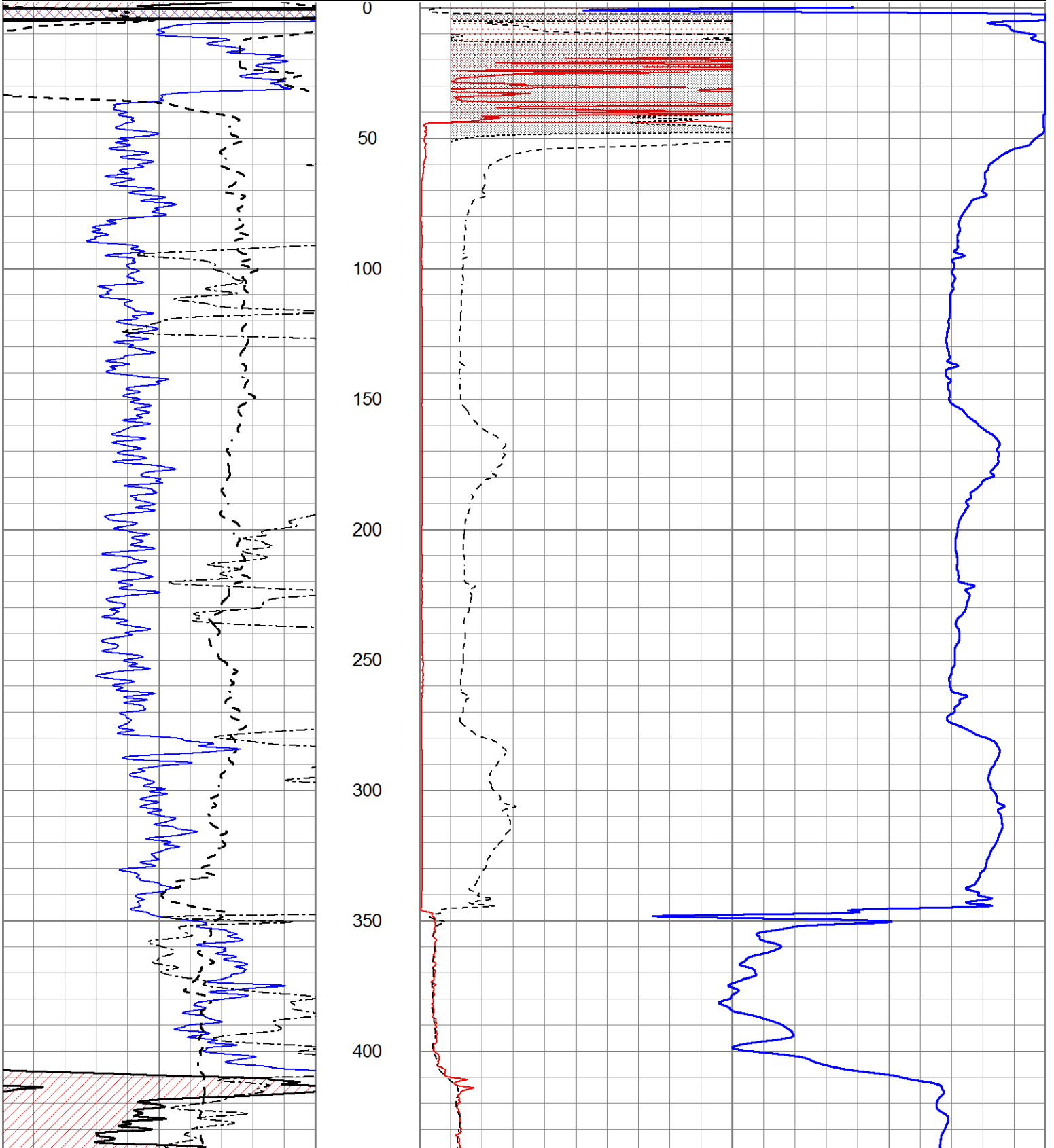


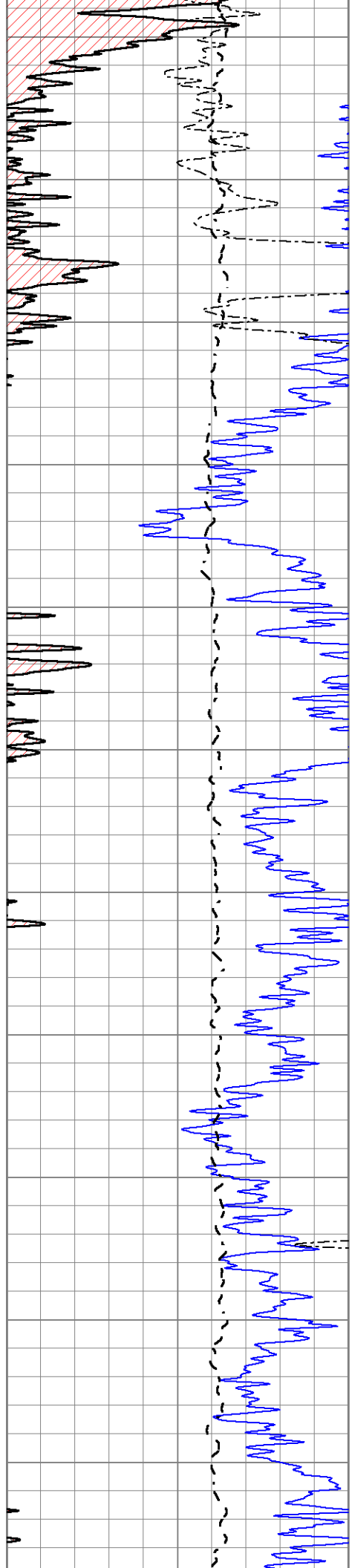
# MAIN SECTION

Database File 7254pe.db  
 Dataset Pathname pass3.3M  
 Presentation Format \_dil2  
 Dataset Creation Fri Oct 28 00:50:06 2022  
 Charted by Depth in Feet scaled 1:600

0	Gamma Ray (GAPI)	150
-100	SP (mV)	100
0	RWA (Ohm-m)	1

1000	CILD (mmho/m)	0
0	RLL3 (Ohm-m)	50
0	RILD (Ohm-m)	50
50	RILD X10 (Ohm-m)	500
50	RLL3 X10 (Ohm-m)	500





450

500

550

600

650

700

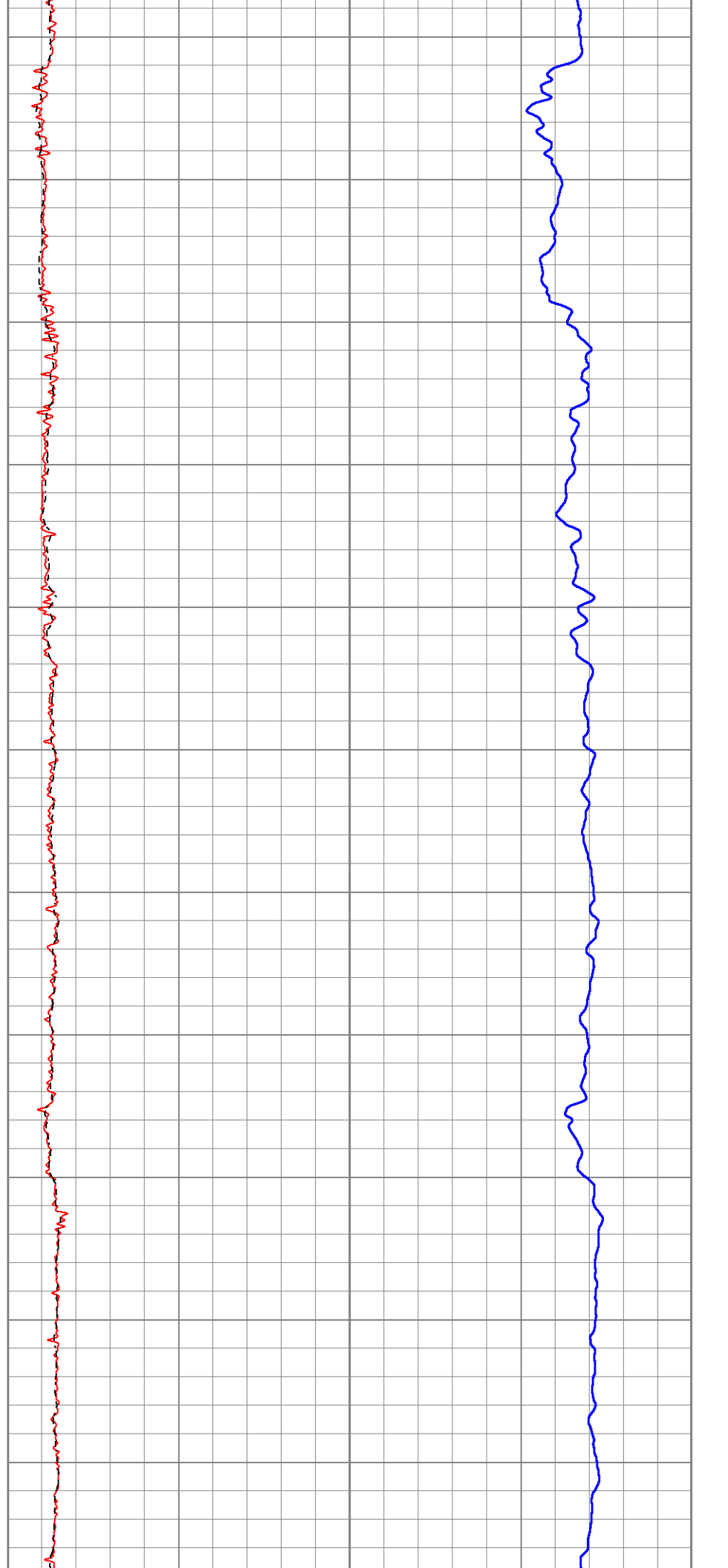
750

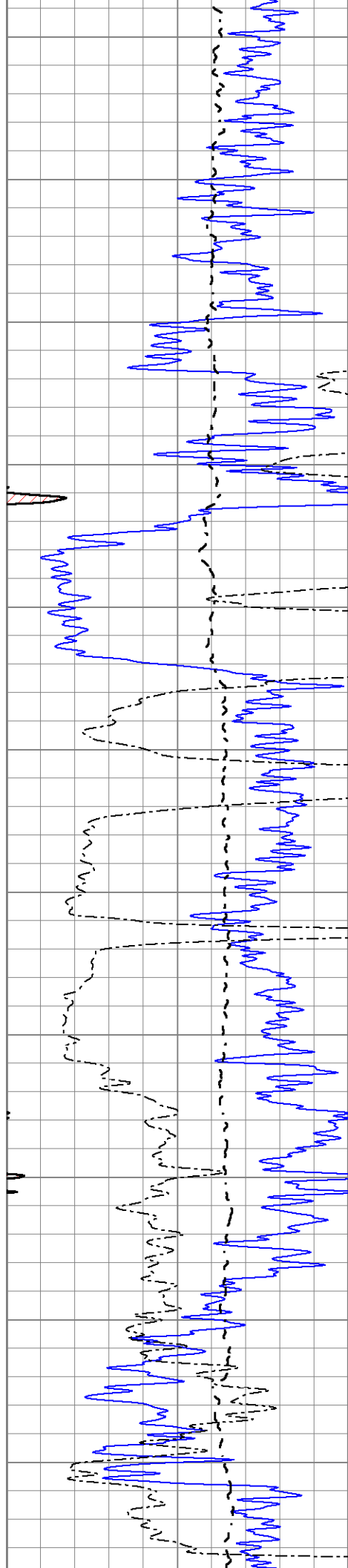
800

850

900

950





1000

1050

1100

1150

1200

1250

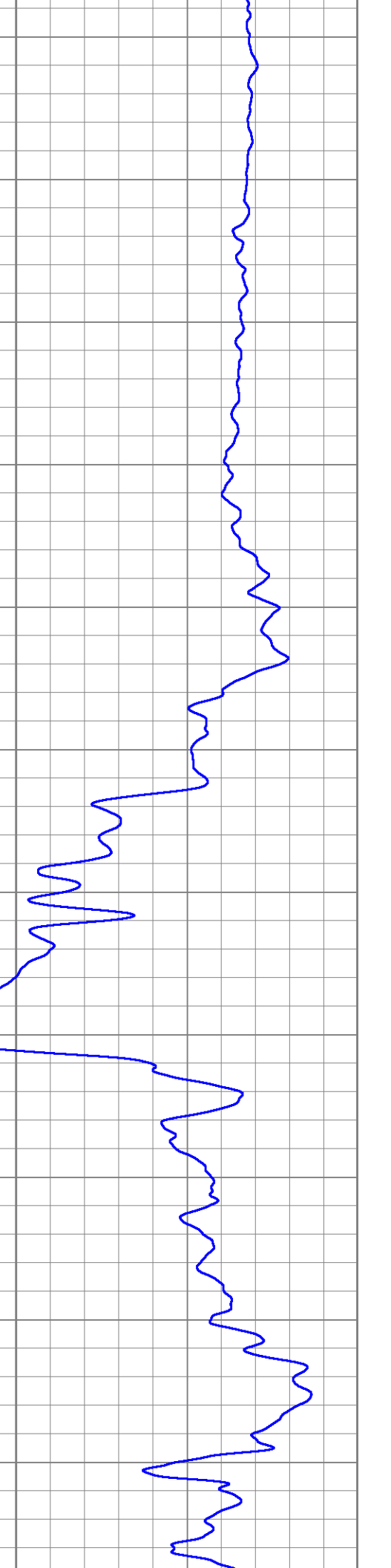
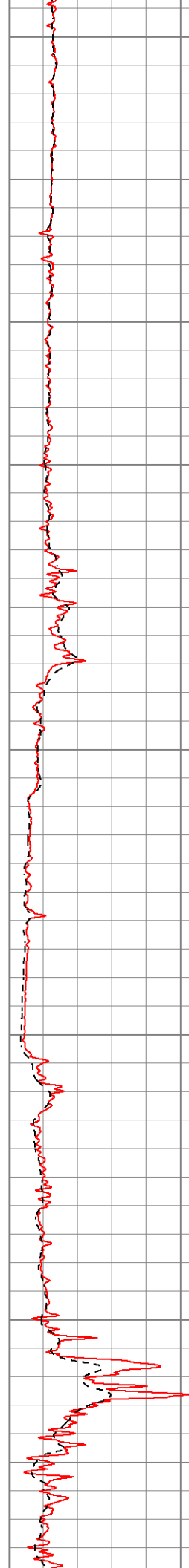
1300

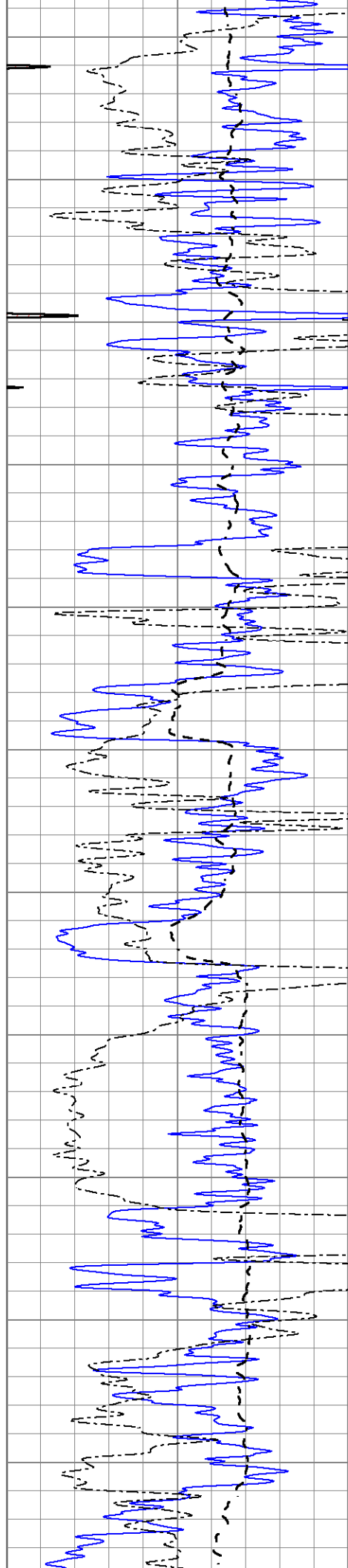
1350

1400

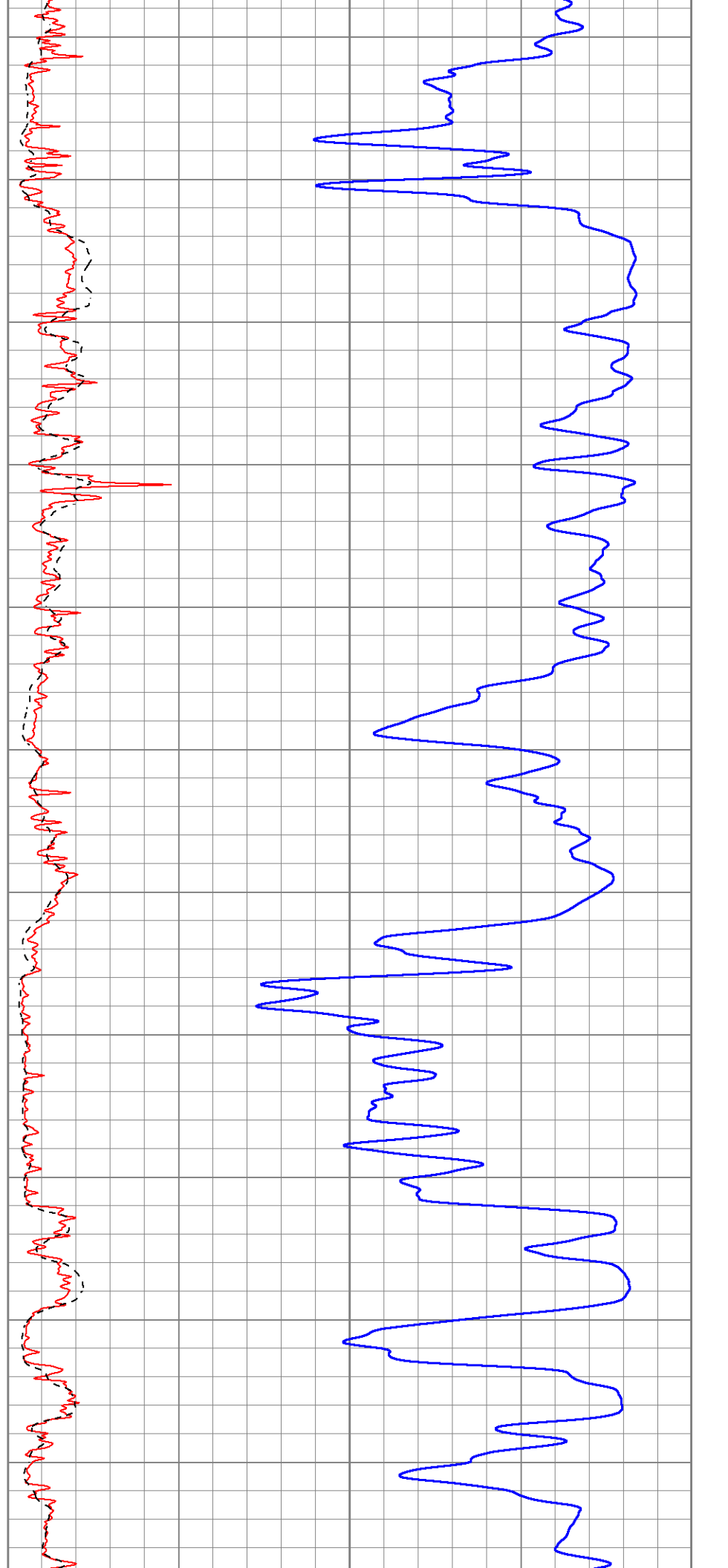
1450

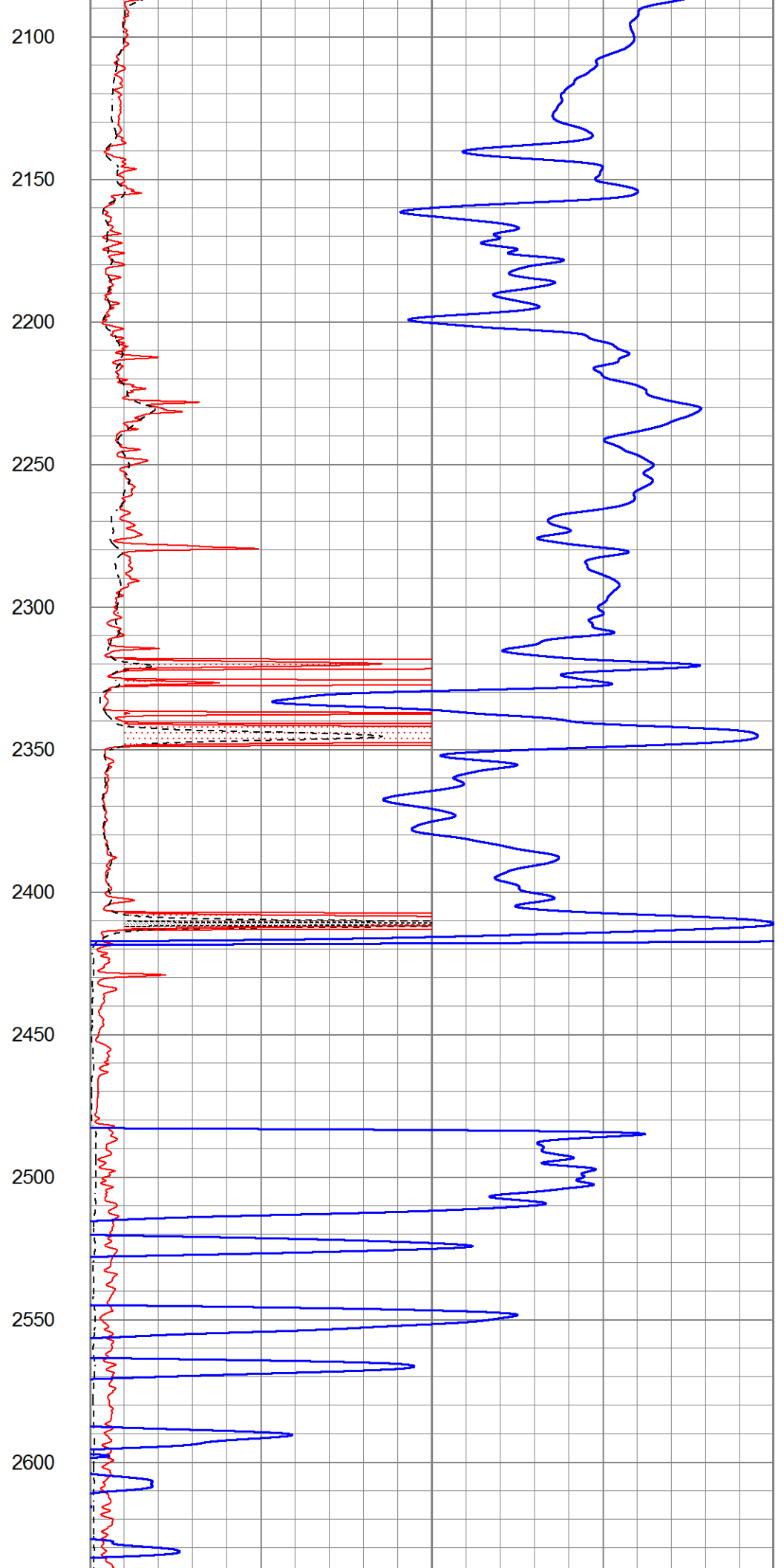
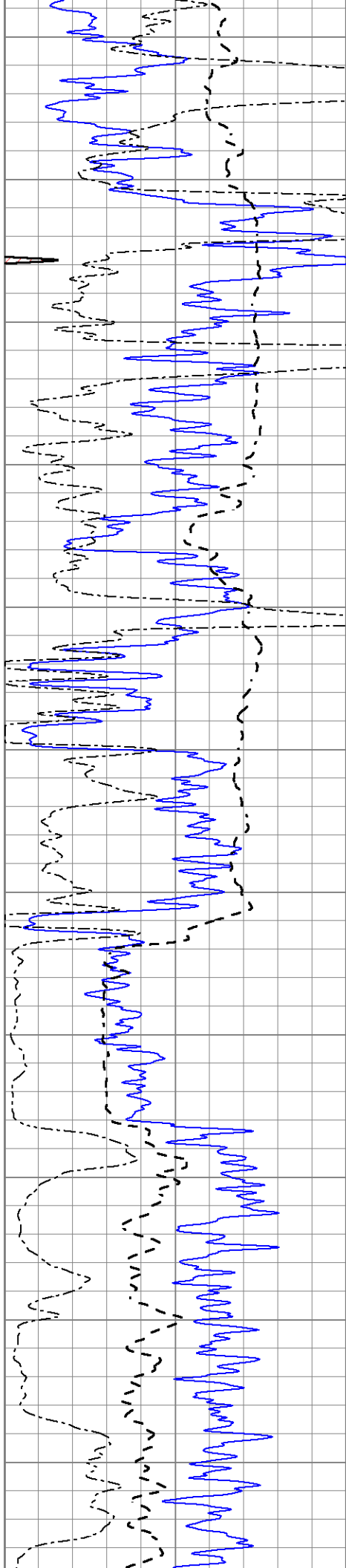
1500

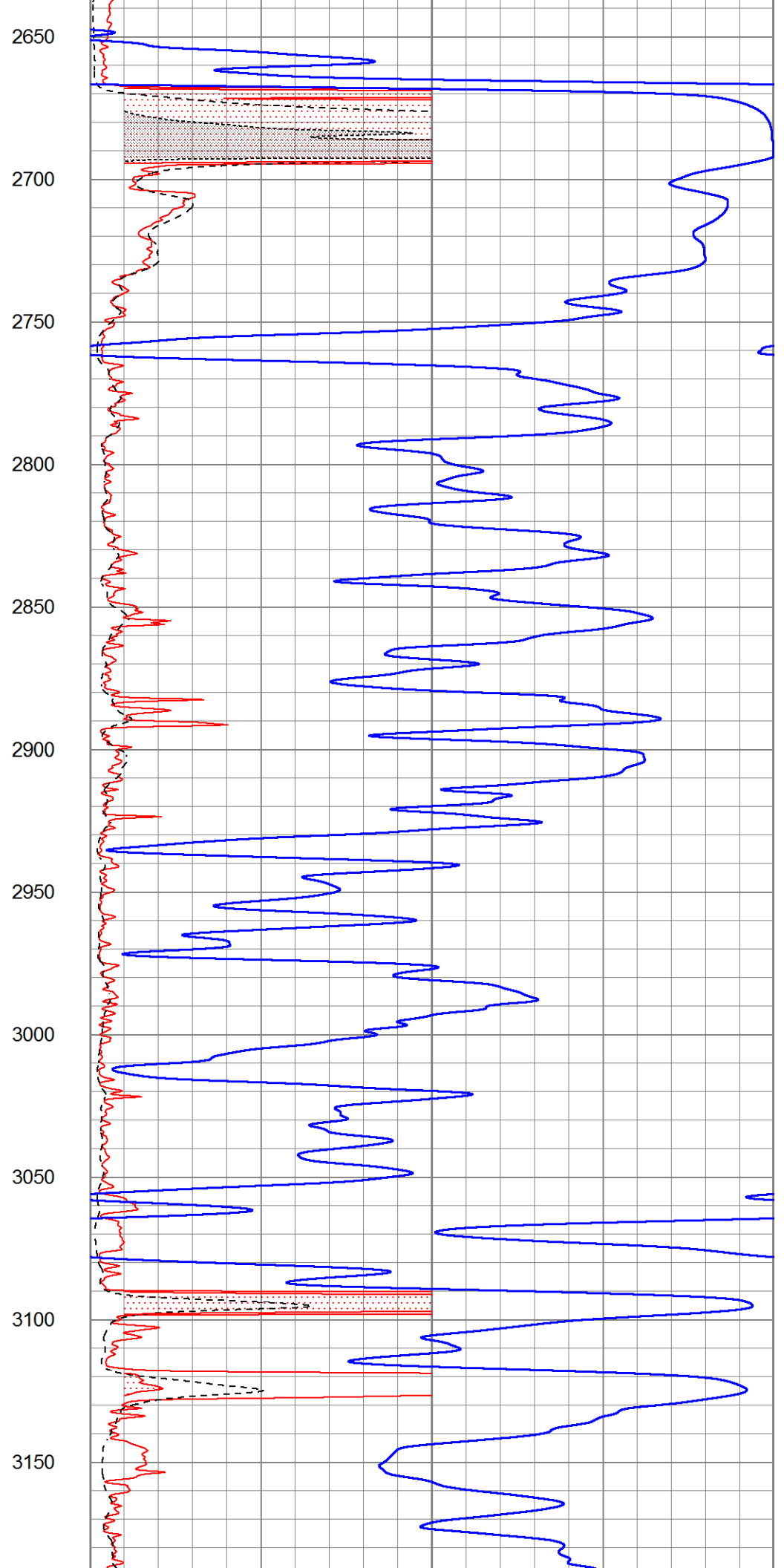
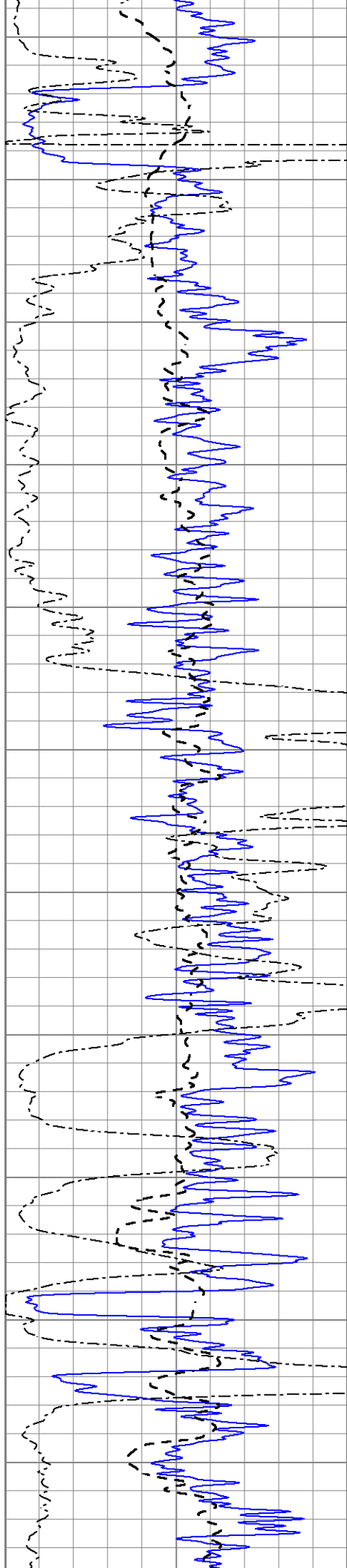


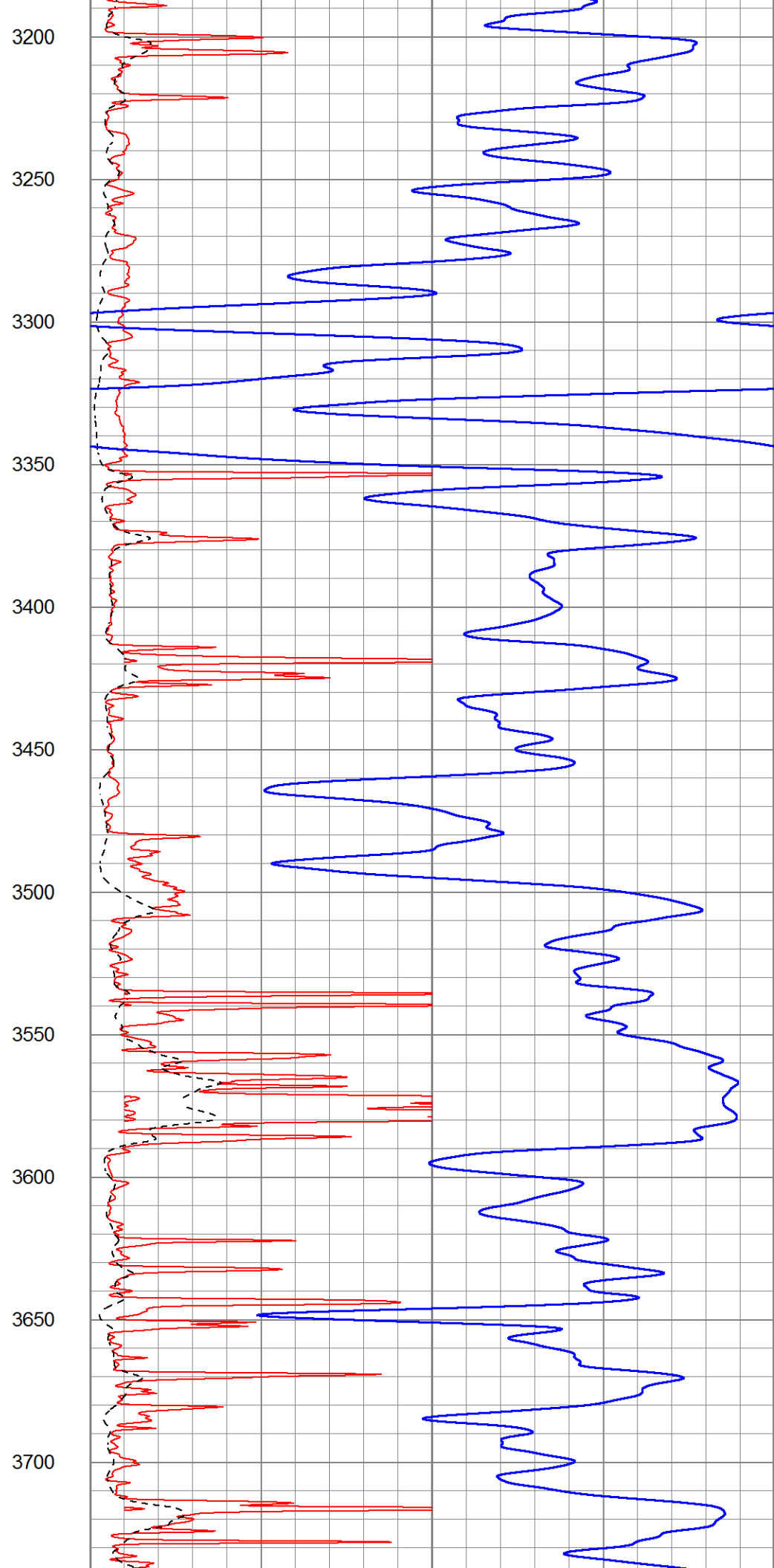
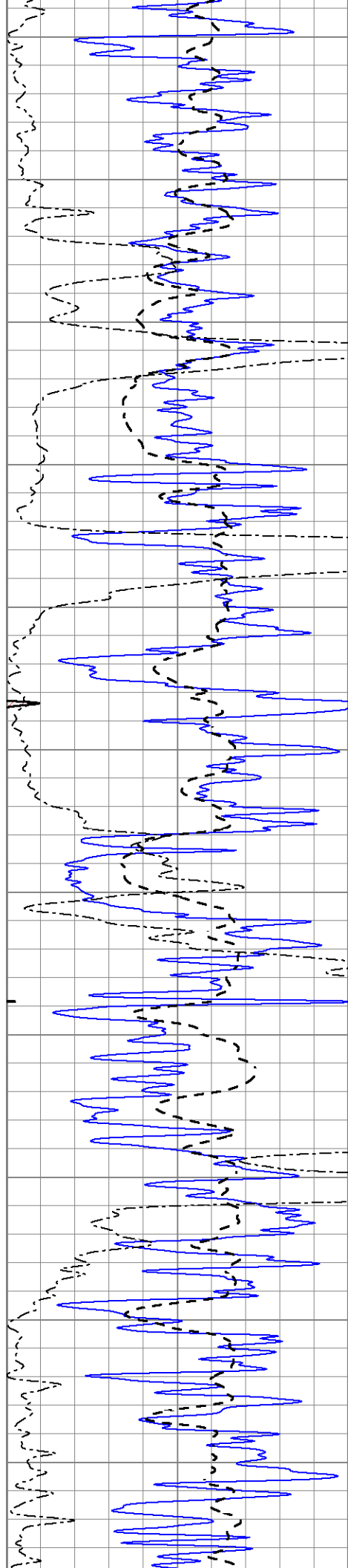


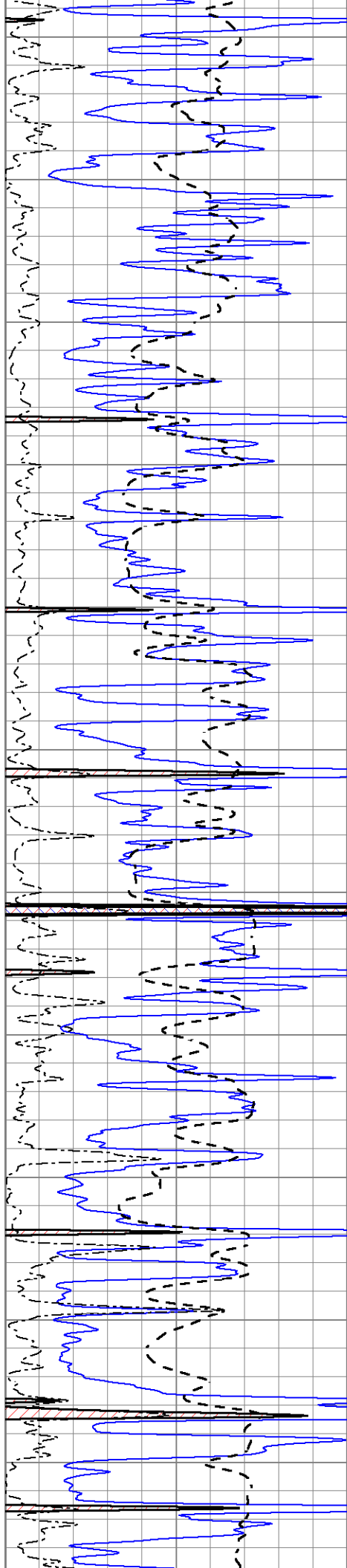
1550  
1600  
1650  
1700  
1750  
1800  
1850  
1900  
1950  
2000  
2050











3750

3800

3850

3900

3950

4000

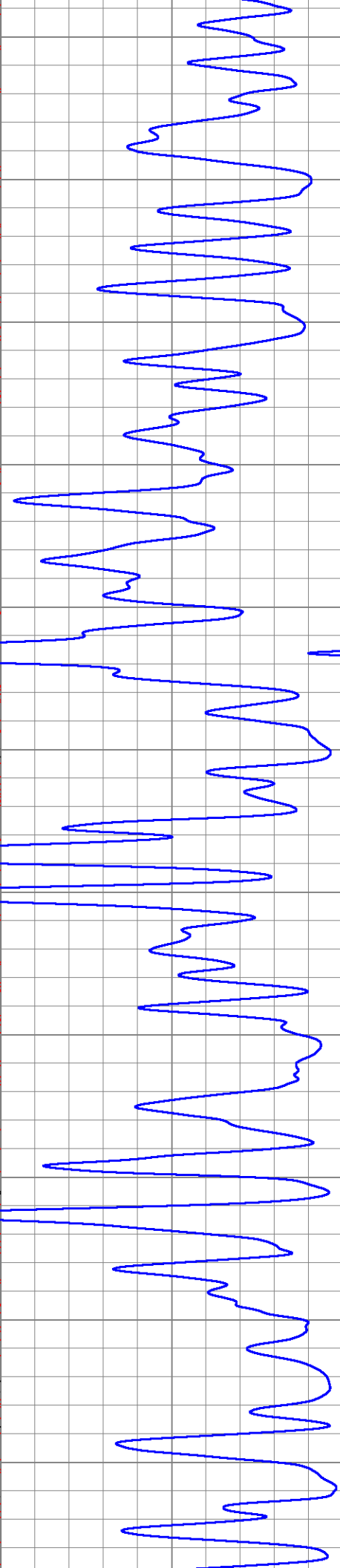
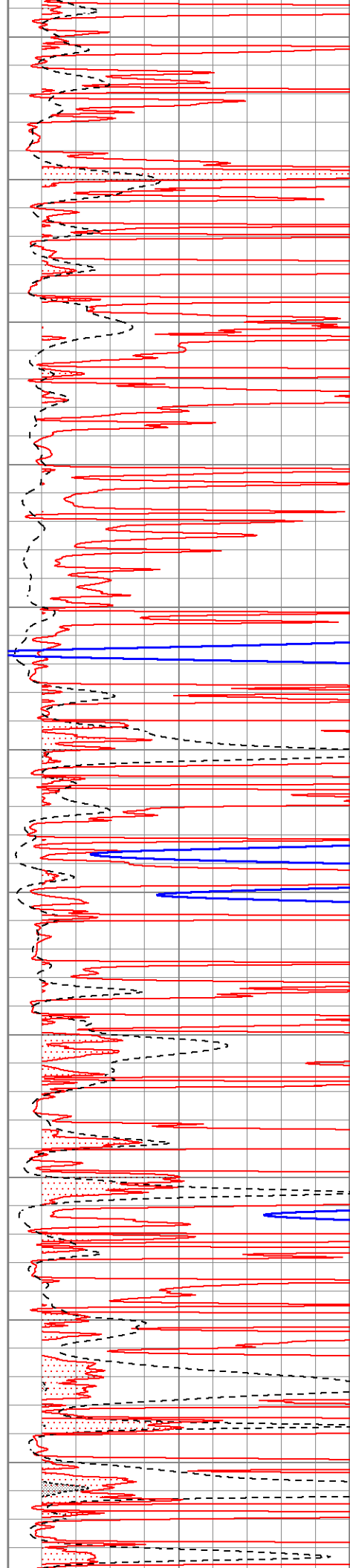
4050

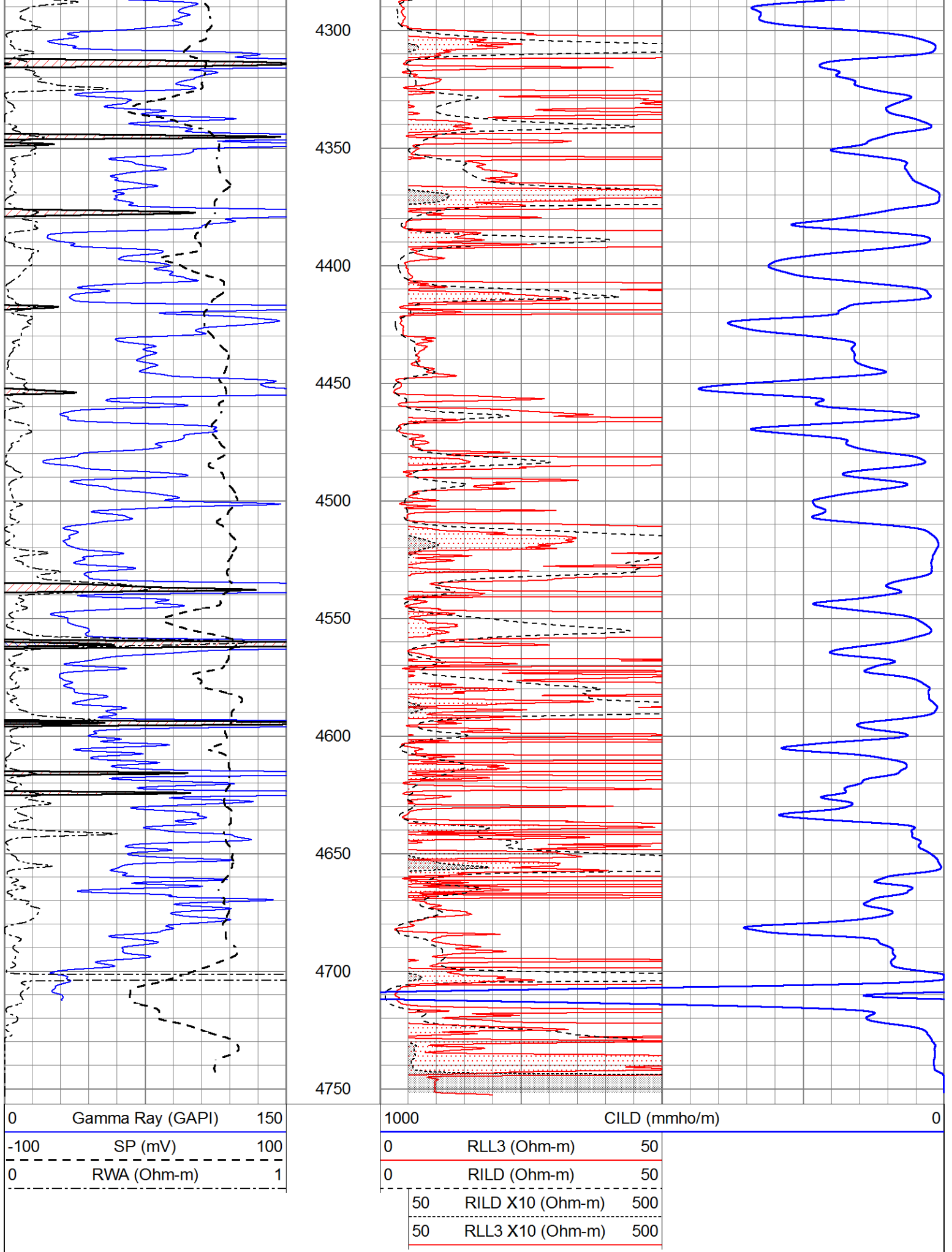
4100

4150

4200

4250







# ANHYDRITE

Database File 7254pe.db  
 Dataset Pathname pass3.2A  
 Presentation Format \_dil  
 Dataset Creation Fri Oct 28 00:01:17 2022  
 Charted by Depth in Feet scaled 1:240

0	GAMMA RAY (GAPI)	150
-100	SP (mV)	100
-250	Rxo/Rt	50
0	MINMK	20

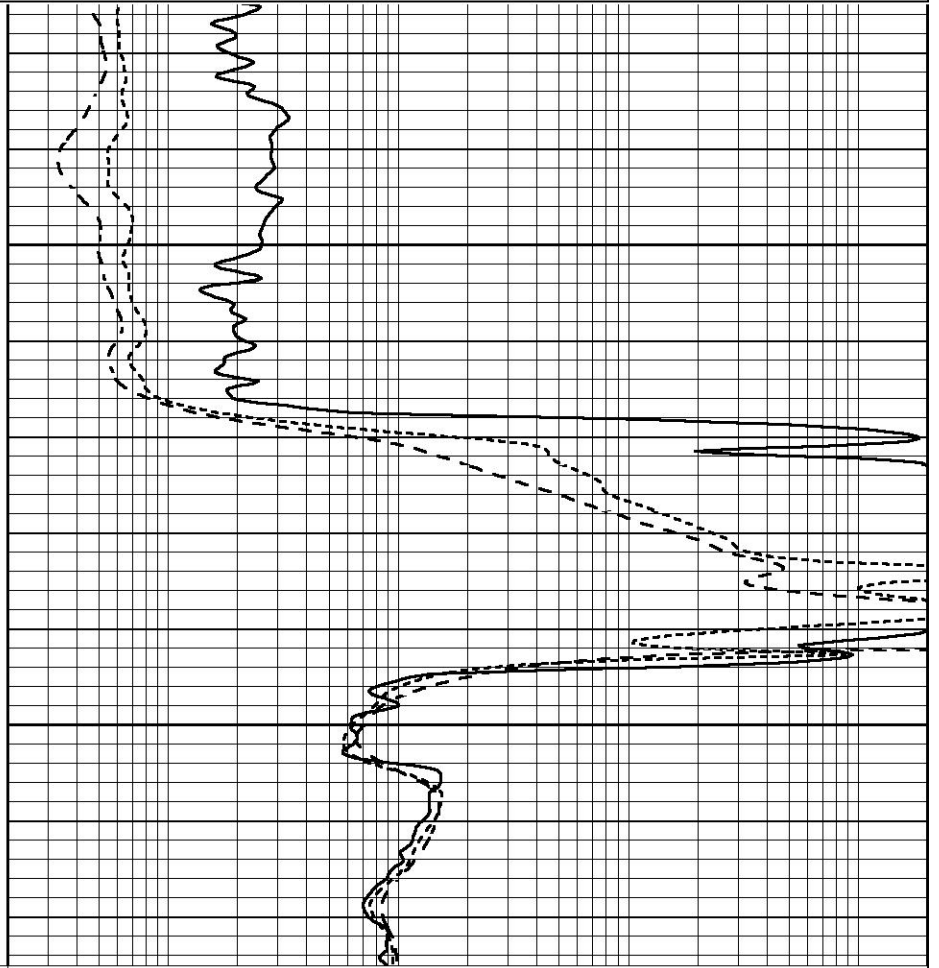
0.2	SHALLOW GUARD (Ohm-m)	2000
0.2	DEEP INDUCTION (Ohm-m)	2000
0.2	MEDIUM INDUCTION (Ohm-m)	2000



2650

2700

0	GAMMA RAY (GAPI)	150
-100	SP (mV)	100
-250	Rxo/Rt	50
0	MINMK	20



0.2	SHALLOW GUARD (Ohm-m)	2000
0.2	DEEP INDUCTION (Ohm-m)	2000
0.2	MEDIUM INDUCTION (Ohm-m)	2000

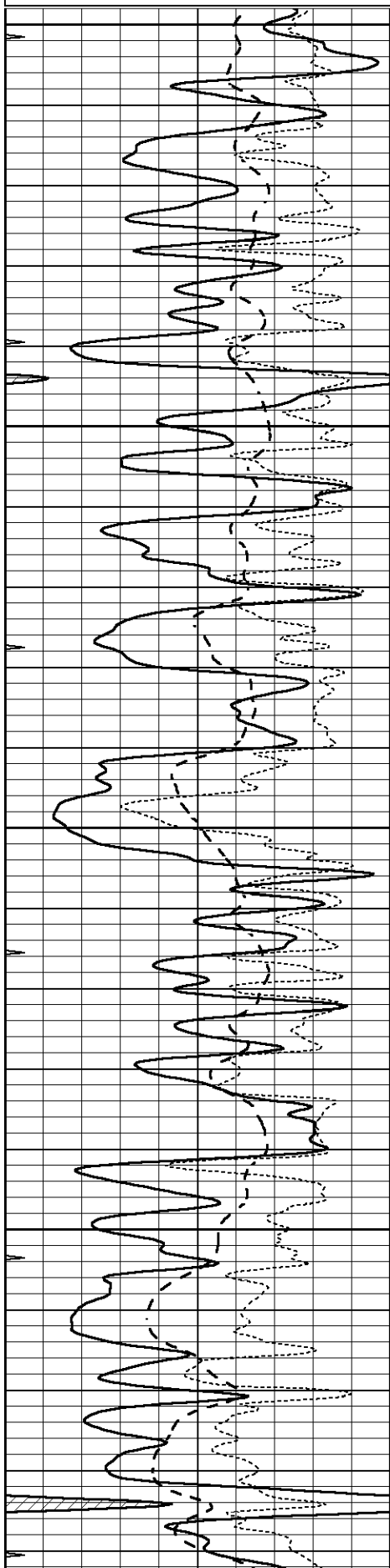


# MAIN SECTION

Database File 7254pe.db  
 Dataset Pathname pass3.3M  
 Presentation Format \_dil  
 Dataset Creation Fri Oct 28 00:50:06 2022

0	GAMMA RAY (GAPI)	150
-100	SP (mV)	100
-250	Rxo/Rt	50
0	MINMK	20

0.2	SHALLOW GUARD (Ohm-m)	2000
0.2	DEEP INDUCTION (Ohm-m)	2000
0.2	MEDIUM INDUCTION (Ohm-m)	2000

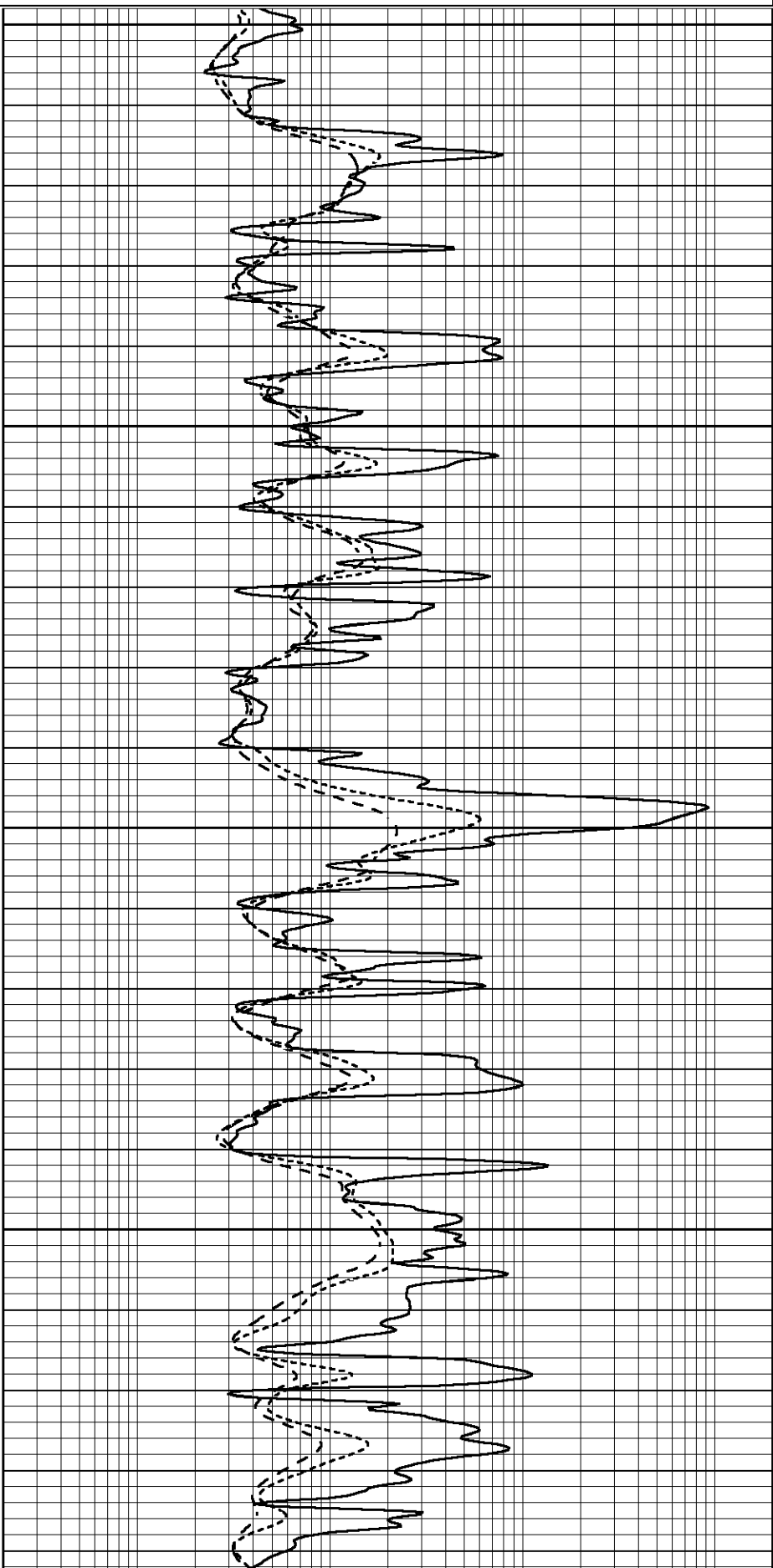


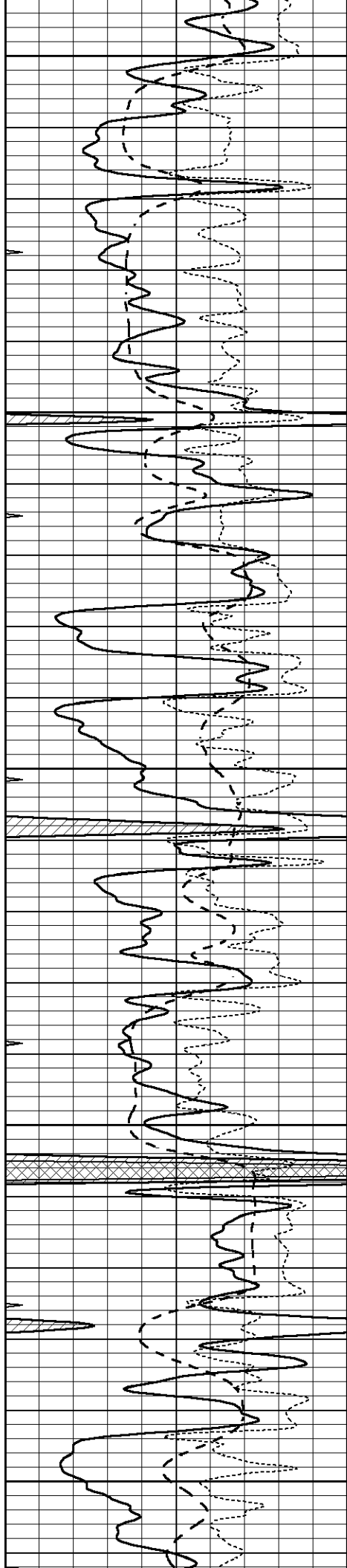
3700

3750

3800

3850





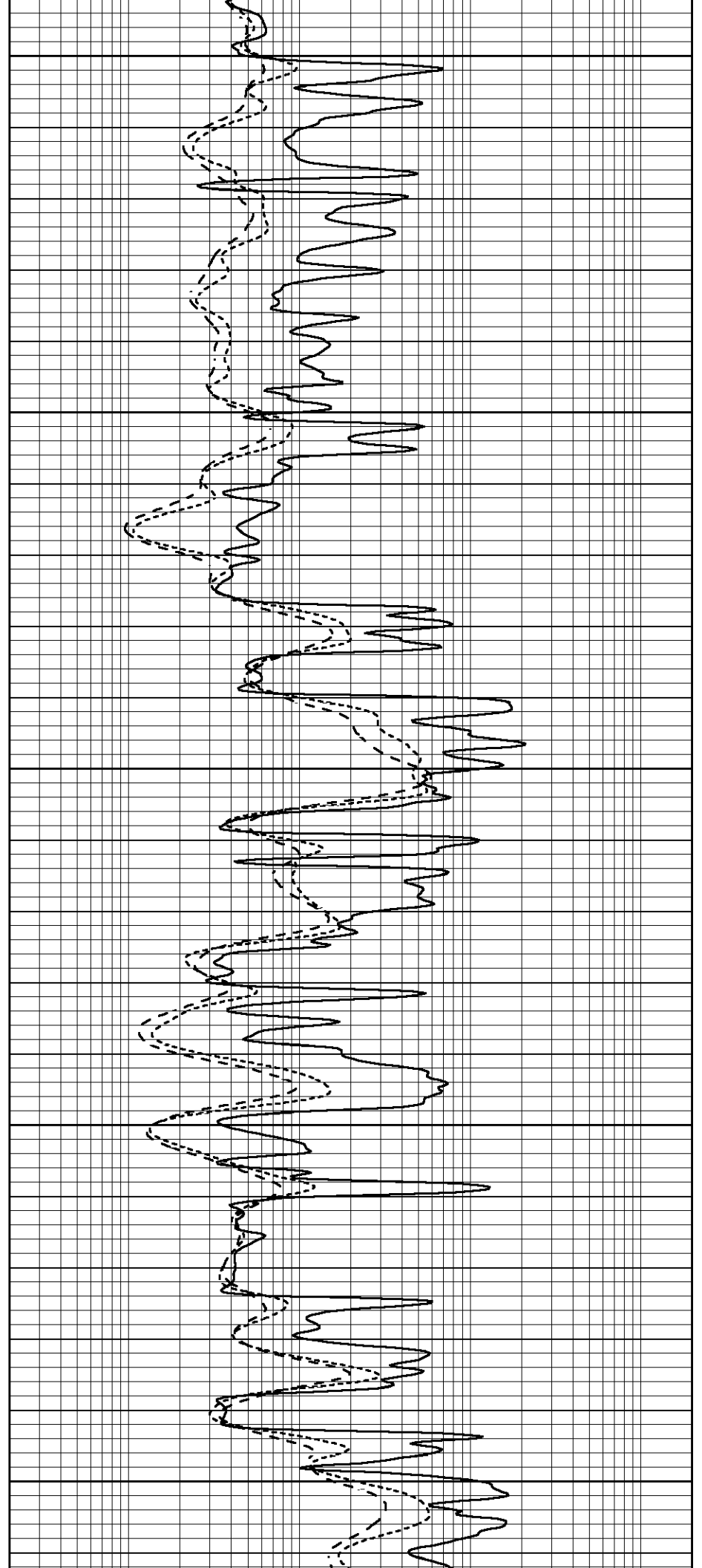
3900

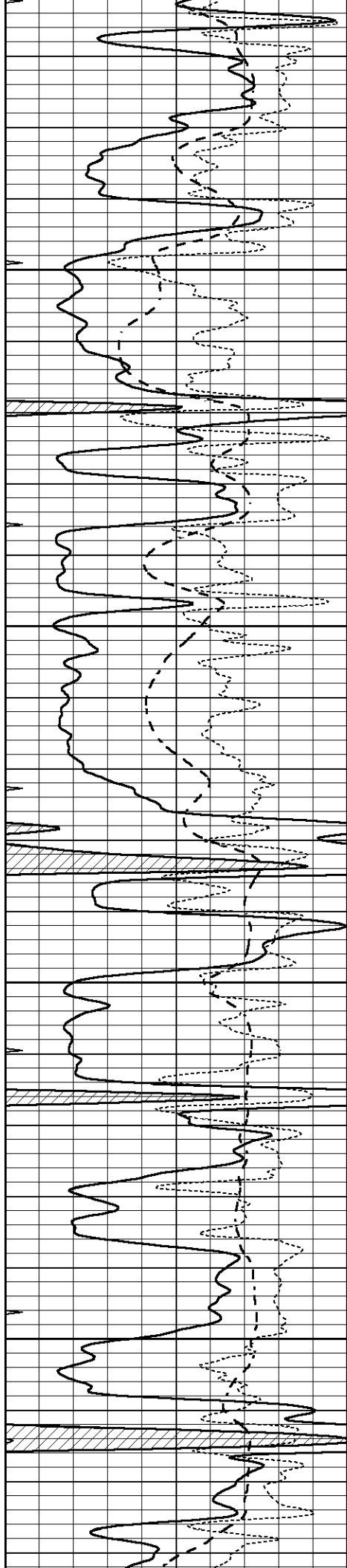
3950

4000

4050

4100



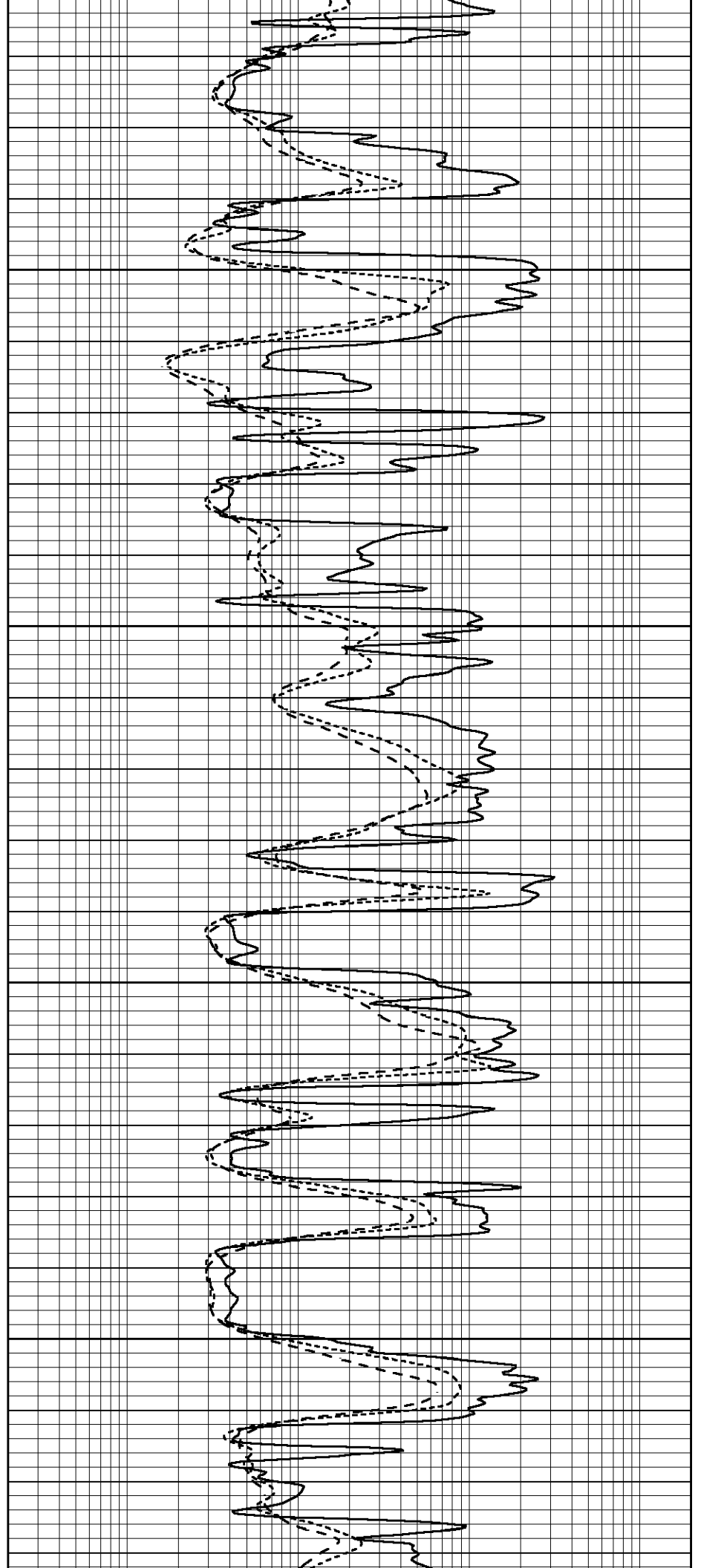


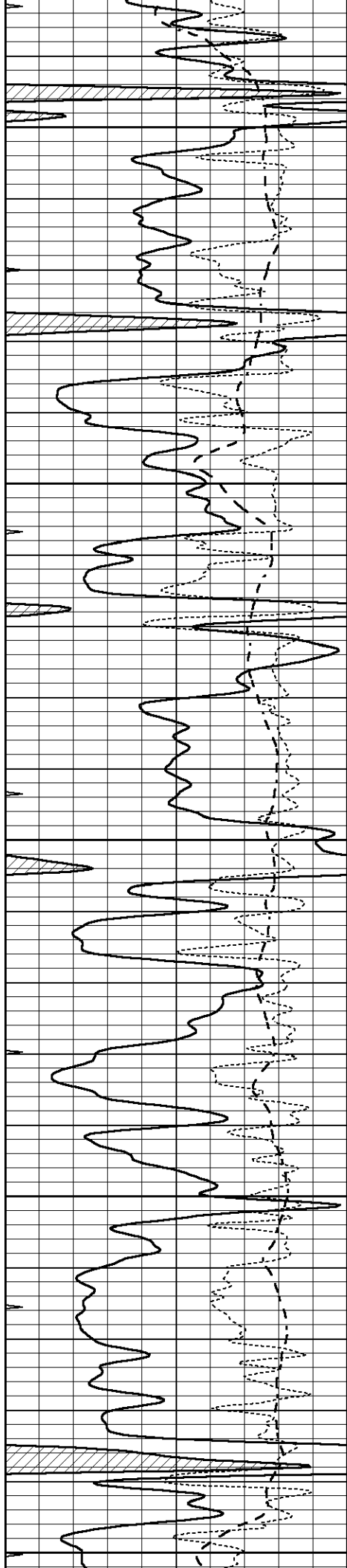
4150

4200

4250

4300





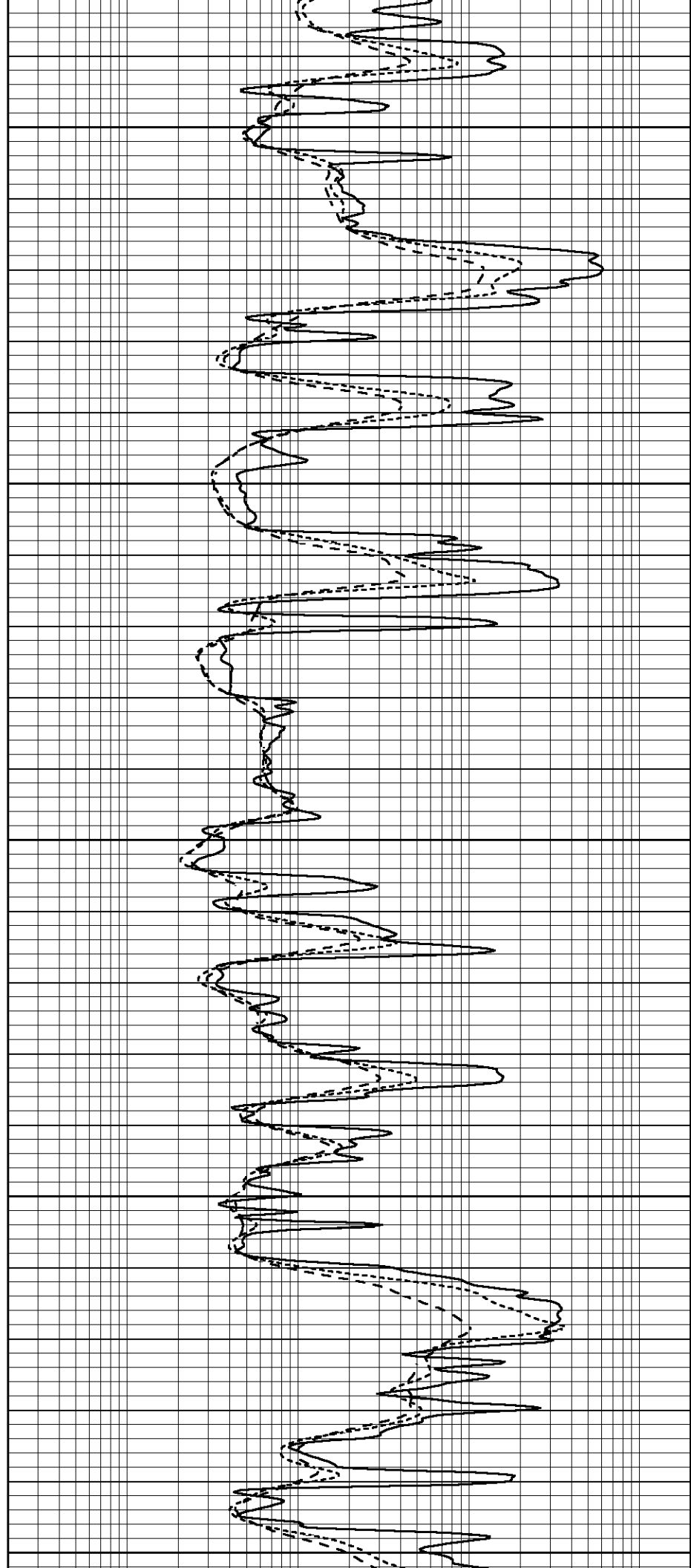
4350

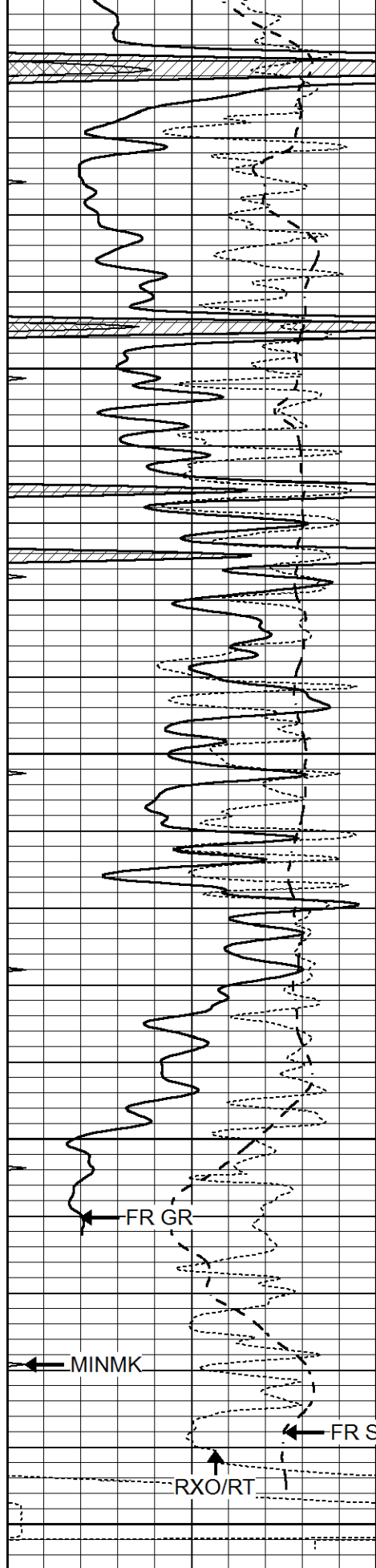
4400

4450

4500

4550





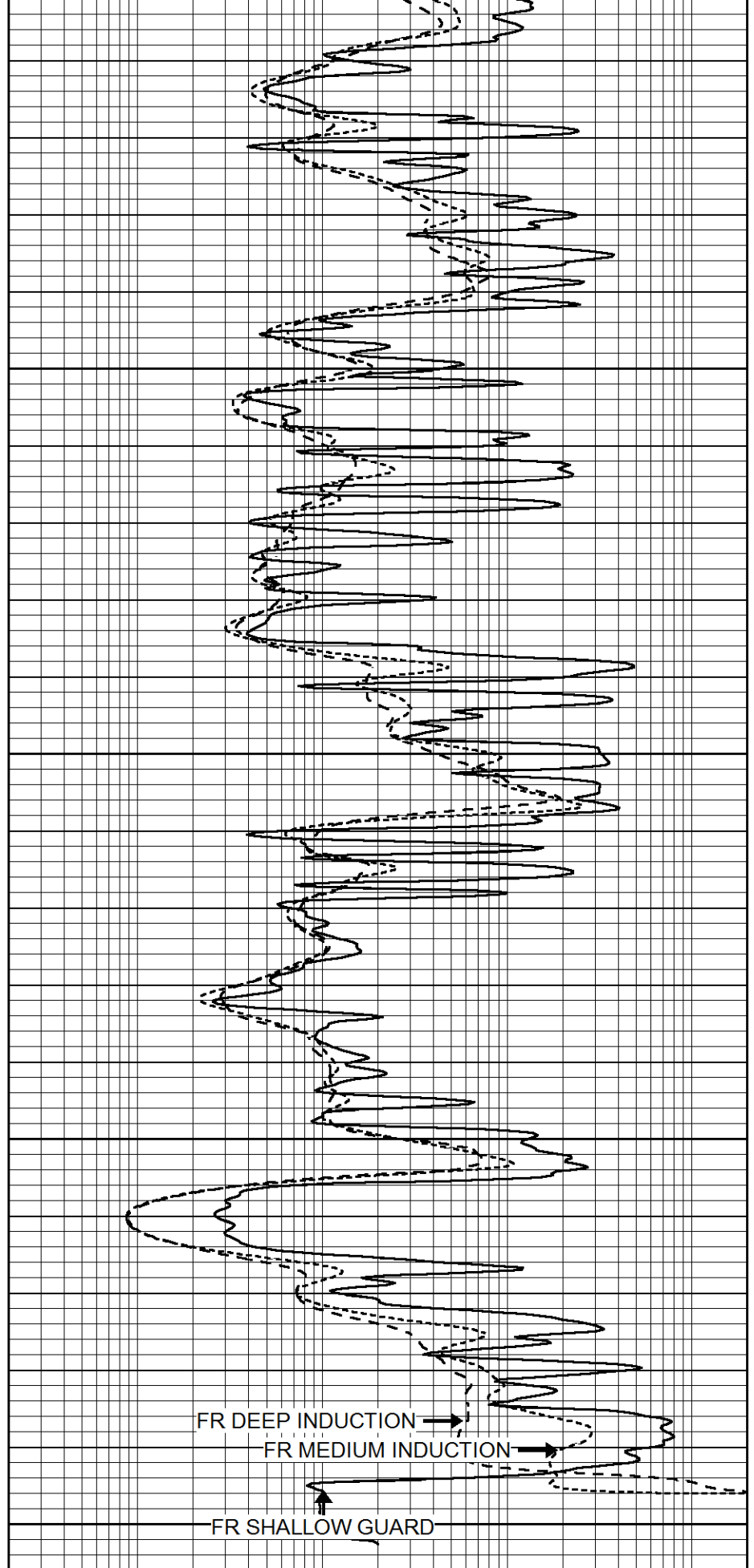
4600

4650

4700

LTD 4748  
4750

0	GAMMA RAY (GAPI)	150
-100	SP (mV)	100
-250	Rxo/Rt	50



FR DEEP INDUCTION →  
FR MEDIUM INDUCTION →  
FR SHALLOW GUARD

0.2	SHALLOW GUARD (Ohm-m)	2000
0.2	DEEP INDUCTION (Ohm-m)	2000
0.2	MEDIUM INDUCTION (Ohm-m)	2000

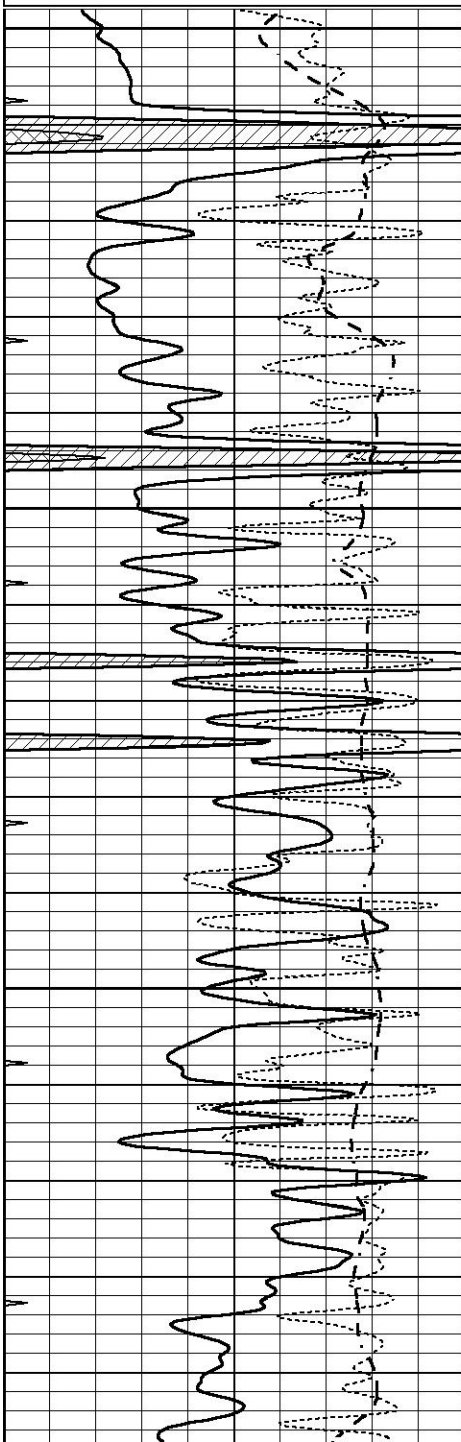


# REPEAT SECTION

Database File 7254pe.db  
 Dataset Pathname pass2.3R  
 Presentation Format \_dil  
 Dataset Creation Fri Oct 28 00:51:05 2022  
 Charted by Depth in Feet scaled 1:240

0	GAMMA RAY (GAPI)	150
-100	SP (mV)	100
-250	Rxo/Rt	50
0	MINMK	20

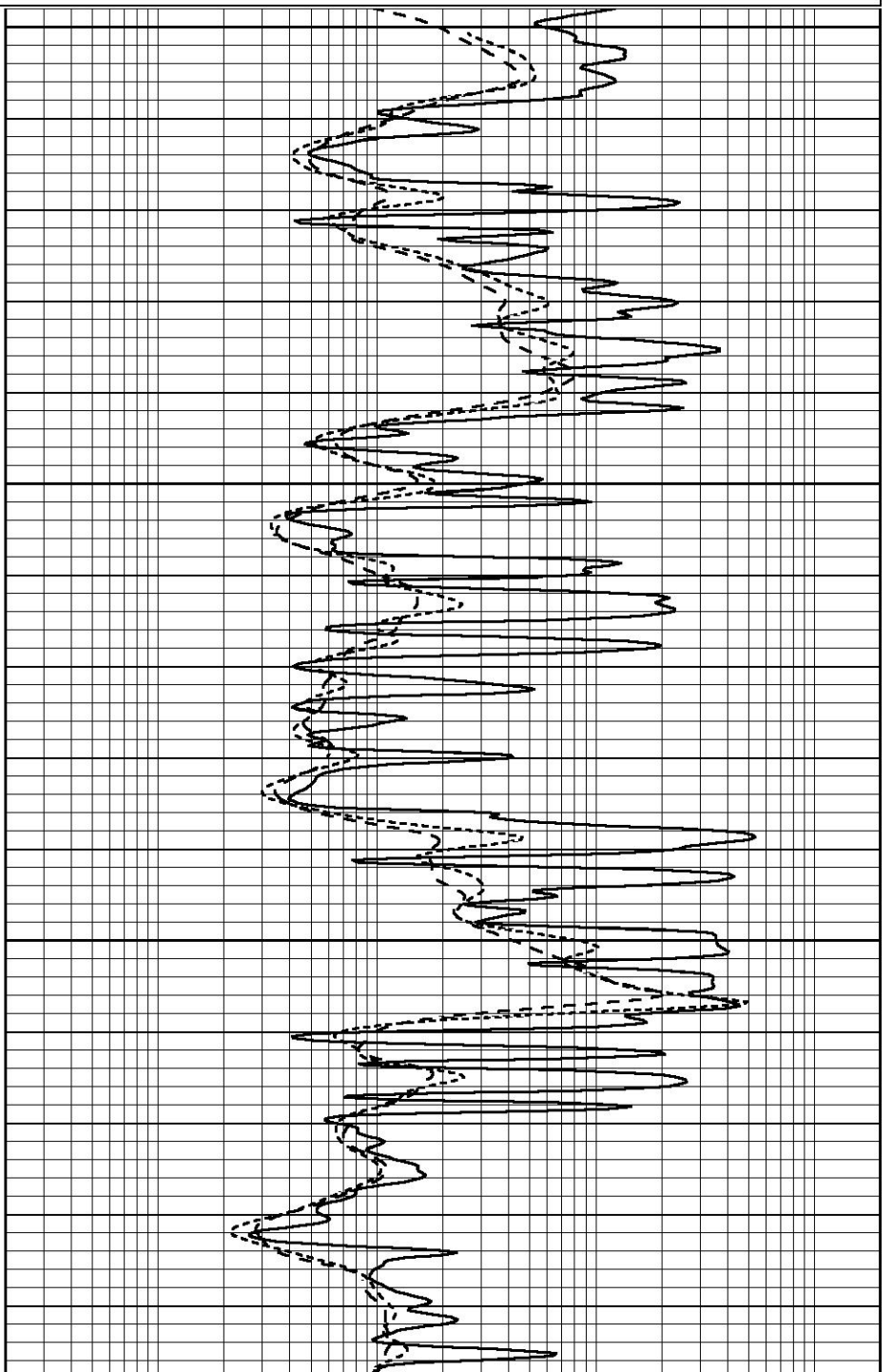
0.2	SHALLOW GUARD (Ohm-m)	2000
0.2	DEEP INDUCTION (Ohm-m)	2000
0.2	MEDIUM INDUCTION (Ohm-m)	2000

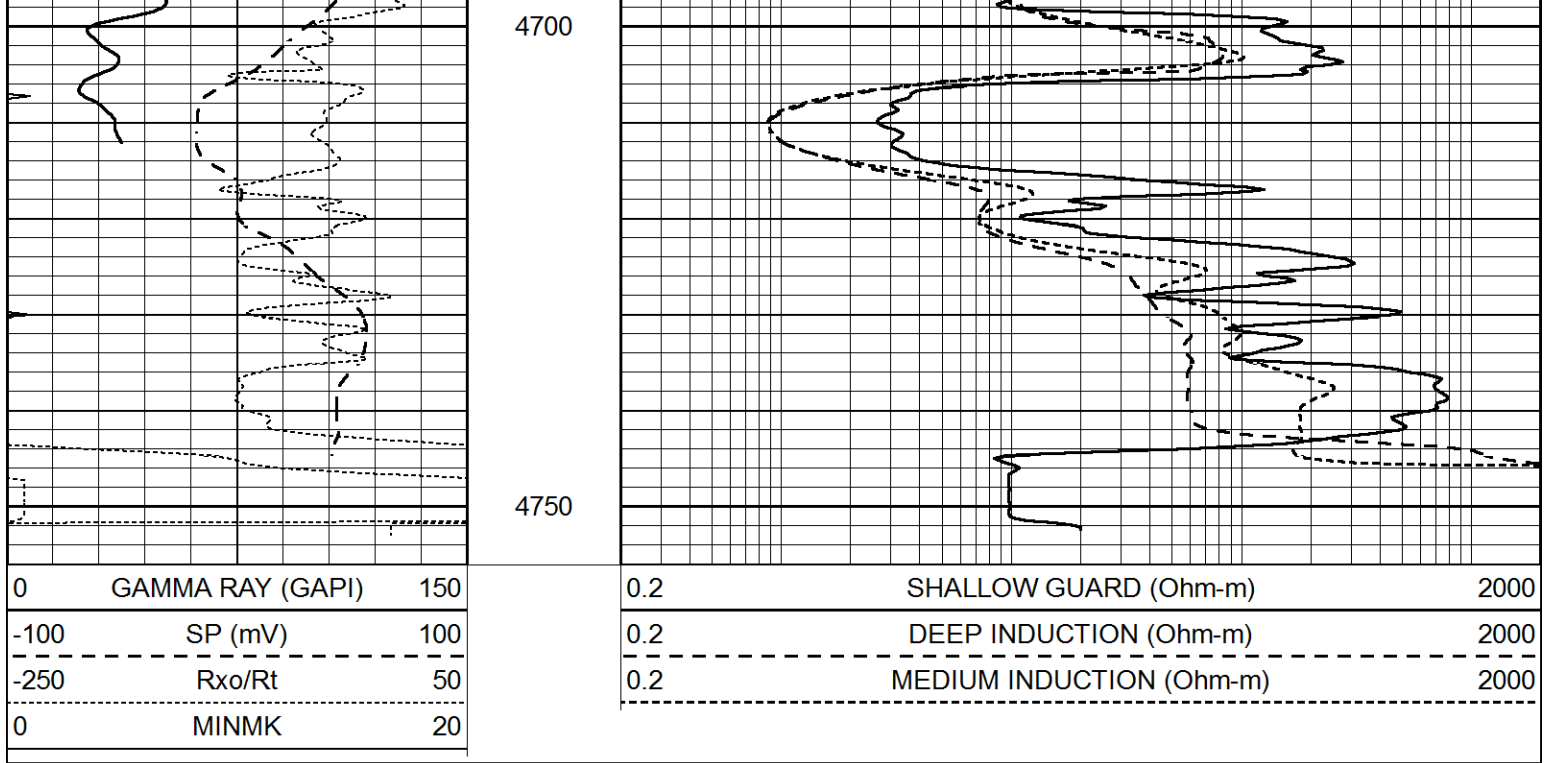


4550

4600

4650





### Calibration Report

Database File 7254pe.db  
 Dataset Pathname pass3.3M  
 Dataset Creation Fri Oct 28 00:50:06 2022

### Dual Induction Calibration Report

Serial-Model: PROBE8-DILG  
 Surface Cal Performed: Thu Oct 27 22:40:33 2022  
 Downhole Cal Performed: Mon Jul 28 11:08:27 2008  
 After Survey Verification Performed: Mon Jul 28 11:08:27 2008

#### Surface Calibration

Loop:	Readings			V	References			Results	
	Air	Loop			Air	Loop	mmho/m	m	b
Deep	0.015	0.648			0.000	400.000	mmho/m	640.000	0.000
Medium	0.029	0.796			0.000	464.000	mmho/m	625.000	-10.000
Internal:	Zero			V	Cal			Results	
								mmho/m	m
Deep	0.017	0.657			0.000	400.000	mmho/m	625.153	-10.619
Medium	0.016	0.757			0.000	464.000	mmho/m	625.992	-9.739

#### Downhole Calibration

	Readings			mmho/m	References			Results	
	Zero	Cal			Zero	Cal	mmho/m	m'	b'
Deep	0.000	0.000			2.011	405.777	mmho/m	1.000	0.000
Medium	0.000	0.000			7.590	503.393	mmho/m	1.000	0.000
LL3		7.500		V		1500.000	Ohm-m		
		0.000		V		20.000	Ohm-m		
		-7.200		V		3800.000	mmho-m		

#### After Survey Verification

	Readings			mmho/m	Targets			Results	
	Zero	Cal			Zero	Cal	mmho/m	m'	b'
Deep	0.000	0.000			0.000	0.000	mmho/m	0.000	0.000

Deep	0.000	0.000	mmho/m	0.000	0.000	mmho/m	0.000	0.000
Medium	0.000	1.000	Ohm-m		1.000	Ohm-m		
LL3		0.000	Ohm-m		0.000	Ohm-m		
		1.000	mmho-m		1.000	mmho-m		

Litho Density Calibration Report  
Serial: 004      Model: PRB

Master Calibration

Performed Tue Aug 02 11:29:35 2022

	Background	Magnesium	Aluminum	Aluminum+Fe	
Window 1	1154.2	10019.5	3137.9	2795.6	cps
Window 2	1054.4	8597.6	2733.4	2469.5	cps
Window 3	902.3	5241.4	1832.1	1719.3	cps
Window 4	251.9	261.1	255.8	252.9	cps
Long Space	0.0	7543.2	1679.0	1415.0	cps
Short Space	4.4	2049.3	1321.7	1116.8	cps
Rho		1.7100	2.5900	0.0000	g/cc
Pe		2.0000	2.7500	5.7900	
Rib Angle	: 43.7	Rib Slope	: 0.957	Density/Spine Ratio	: 0.562
Spine Angle	: 73.7	Spine Slope	: 3.426	Spine Intercept	: -17.2

Before Survey Verification

Performed Wed Dec 31 18:00:00 1969

Window 1	0.0	0.0	0.0	0.0	cps
Window 2	0.0	0.0	0.0	0.0	cps
Window 3	0.0	0.0	0.0	0.0	cps
Window 4	0.0	0.0	0.0	0.0	cps
Long Space	0.0	0.0	0.0	0.0	cps
Short Space	0.0	0.0	0.0	0.0	cps
Measured Rho		0.0000	0.0000	0.0000	g/cc
Measured Correction		0.0000	0.0000	0.0000	g/cc
Measured Pe			0.0000	0.0000	

After Survey Verification

Performed Wed Dec 31 18:00:00 1969

Window 1	0.0	0.0	0.0	0.0	cps
Window 2	0.0	0.0	0.0	0.0	cps
Window 3	0.0	0.0	0.0	0.0	cps
Window 4	0.0	0.0	0.0	0.0	cps
Long Space	0.0	0.0	0.0	0.0	cps
Short Space	0.0	0.0	0.0	0.0	cps
Measured Rho		0.0000	0.0000	0.0000	g/cc
Measured Correction		0.0000	0.0000	0.0000	g/cc
Measured Pe			0.0000	0.0000	

Compensated Neutron Calibration Report

Serial Number:      070808PMC  
Tool Model:          NABORS

PRE-SURVEY VERIFICATION

Detector	Readings	Measured	Target
Short Space	cps		
Long Space	cps	pu	pu

POST-SURVEY VERIFICATION

Detector	Readings	Measured	Target
Short Space	cps		
Long Space	cps	pu	pu

Gamma Ray Calibration Report

Serial Number:	070558	
Tool Model:	OPEN_GR	
Performed:	Wed Oct 19 09:38:21 2022	
Calibrator Value:	1.0	GAPI
Background Reading:	0.0	cps
Calibrator Reading:	1.0	cps
Sensitivity:	0.3000	GAPI/cps