



MIDWEST WIRELINE

DUAL COMP POROSITY LOG

Company: Darrah Oil Company, LLC
 Well: Fanshier #1-4
 Field: Shaeffer-Rothgarn
 County: Stafford
 State: Kansas

Company: Darrah Oil Company, LLC
 Well: Fanshier #1-4
 Field: Shaeffer-Rothgarn
 County: Stafford
 State: Kansas

Location: API #: 15-185-24120-00-00
 1019 FSL & 2241 FWL
 SEC 4 TWP 21S RGE 13W
 Permanent Datum: Ground Level Elevation: 1888
 Log Measured From: Kelly Bushing
 Drilling Measured From: Kelly Bushing
 Other Services: DIL/MEL BHCs
 Elevation: K.B. 1901, D.F. G.L. 1888

Date	10/10/2022						
Run Number	One						
Type Log	CNL/CDL						
Depth Driller	3700						
Depth Logger	3701						
Bottom Logged Interval	3672						
Top Logged Interval	2700						
Type Fluid In Hole	Chemical						
Salinity, PPM CL	5000						
Density	9.4						
Level	Full						
Max. Rec. Temp. F	113						
Operating Rig Time	4 Hours						
Equipment -- Location	P-108 HAYS						
Recorded By	D. Schmidt						
Witnessed By	Jim Musgrove						
Borehole Record							
Run No.	Bit	From	To	Size	Wgt.	From	To
One	12.25	0	225	8.625	23	0	225
Two	7.875	225	TD				
Casing Record							

<<< Fold Here >>>

All interpretations are opinions based on inferences from electrical or other measurements and Midwest Wireline LLC cannot and does not guarantee the accuracy or correctness of any interpretation, and Midwest Wireline LLC will not be liable or responsible for any loss, costs, damages, or expenses incurred or sustained by anyone resulting from any interpretation made by any of our officers, agents or employees.

Comments

N/A DENOTES NOT AVAILABLE OR NON-APPLICABLE.

Great Bend,
 South to county line, 1 South, 1/2 West

Log Measured From: Kelly Bushing 13 Ft. Above Permanent Datum

THANK YOU FOR USING MIDWEST WIRELINE LLC
 785-625-3858

Your Midwest Wireline Crew

Engineer: D. Schmidt
 Operator:
 Operator:
 Operator:

This Log Record Was Witnessed By

Primary Witness: Jim Musgrove
 Secondary Witness:
 Secondary Witness:
 Secondary Witness:

Sensor	Offset (ft)	Schematic	Description	Length (ft)	O.D. (in)	Weight (lb)
GR	40.33		GR-M&W (103)	3.00	3.50	50.00
CNLSC CNSSC	37.23 36.48		CNT-M&W (210)	5.00	3.50	100.00
LSD DCAL SSD	28.18 28.17 27.68		CDL-M&W (303-03)	8.50	4.00	250.00
ML-PSI STKBL ML (401)			7.58	4.00	65.00	
MCAL MI MN	19.58 19.58 19.58					
RLL3F RLL3	15.50 15.50					
DIL-M&W (504 HT)			18.25	3.50	220.00	
CILD	8.33					
CILM	4.50					
SP	0.20					

Dataset: darrah)_fانشier 1-4.db: field/well/stkml/pass3.1
 Total length: 42.33 ft
 Total weight: 685.00 lb
 O.D.: 4.00 in

Log Variables

DatabaseC:\ProgramData\Warrior\Data\darrah)_fanshier 1-4.db
 Dataset field/well/stkml/pass3.1/_vars_

Top - Bottom

A	BOREID in	BOTTEMP degF	CASEOD in	CASETHCK in	FLUIDDEN g/cc	M	MATRXDEN g/cc
1	7.875	113	5.5	0	1	2	2.71
NPORSEL	PERFS	SNDERR mmho/m	SNDERRM mmho/m	SPSHIFT mV	SRFTEMP degF	SZCOR	TDEPTH ft
Limestone	0	0	0	557	80	Off	3701

Variable Description

A : Cement Factor (a)
 BOREID : Borehole I.D.
 BOTTEMP : Bottom Hole Temperature
 CASEOD : Casing O.D.
 CASETHCK : Casing Thickness
 FLUIDDEN : Fluid Density
 M : Cement Exp (m)
 MATRXDEN : Matrix Density

NPORSEL : Neutron Porosity Curve Select
 PERFS : Perforation Flag
 SNDERR : Deep Sonde Error Correction
 SNDERRM : Medium Sonde Error Correction
 SPSHIFT : S.P. Baseline Offset
 SRFTEMP : Surface Temperature
 SZCOR : CN Size Cor. ?
 TDEPTH : Total Depth



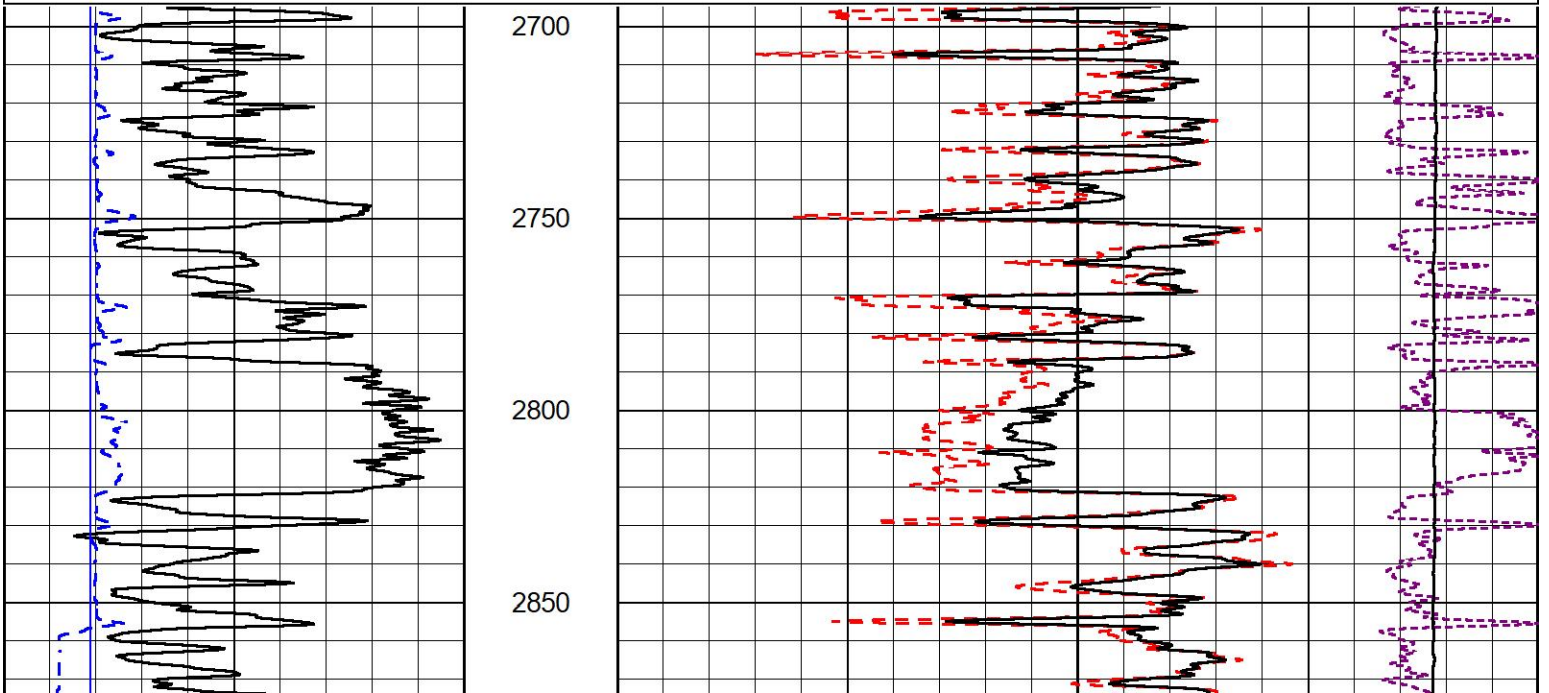
2" SCALE BULK DENSITY

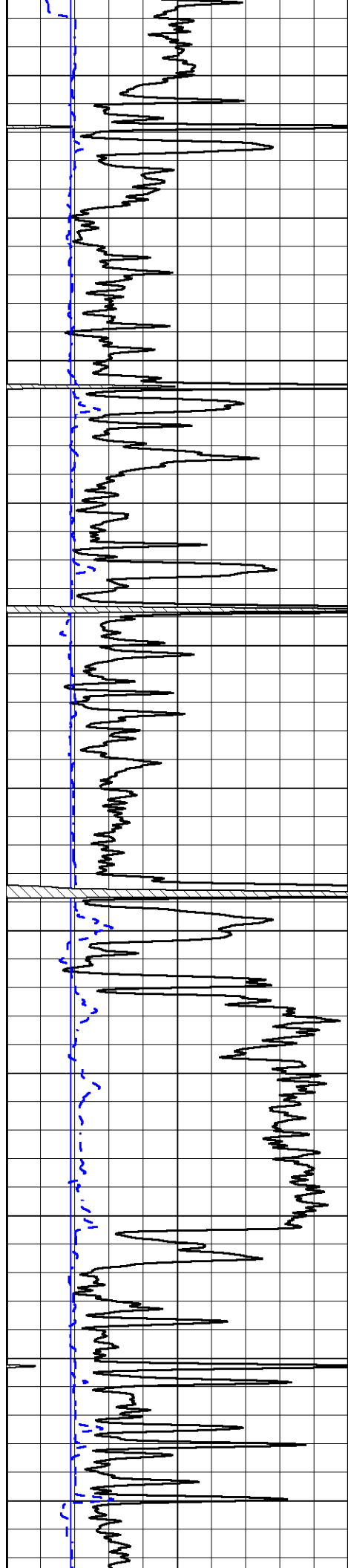
MAIN PASS

Database File darrah)_fanshier 1-4.db
 Dataset Pathname stkml/pass3.2
 Presentation Format _cdl
 Dataset Creation Mon Oct 10 14:46:51 2022
 Charted by Depth in Feet scaled 1:600

0	Gamma Ray (GAPI)	150
6	Caliper (in)	16

30	Compensated Density (pu)	-10
2	Bulk Density (g/cc)	3
15000	Line Tension (lb)	0
-0.25	Correction (g/cc)	0.25





2900

2950

3000

3050

3100

3150

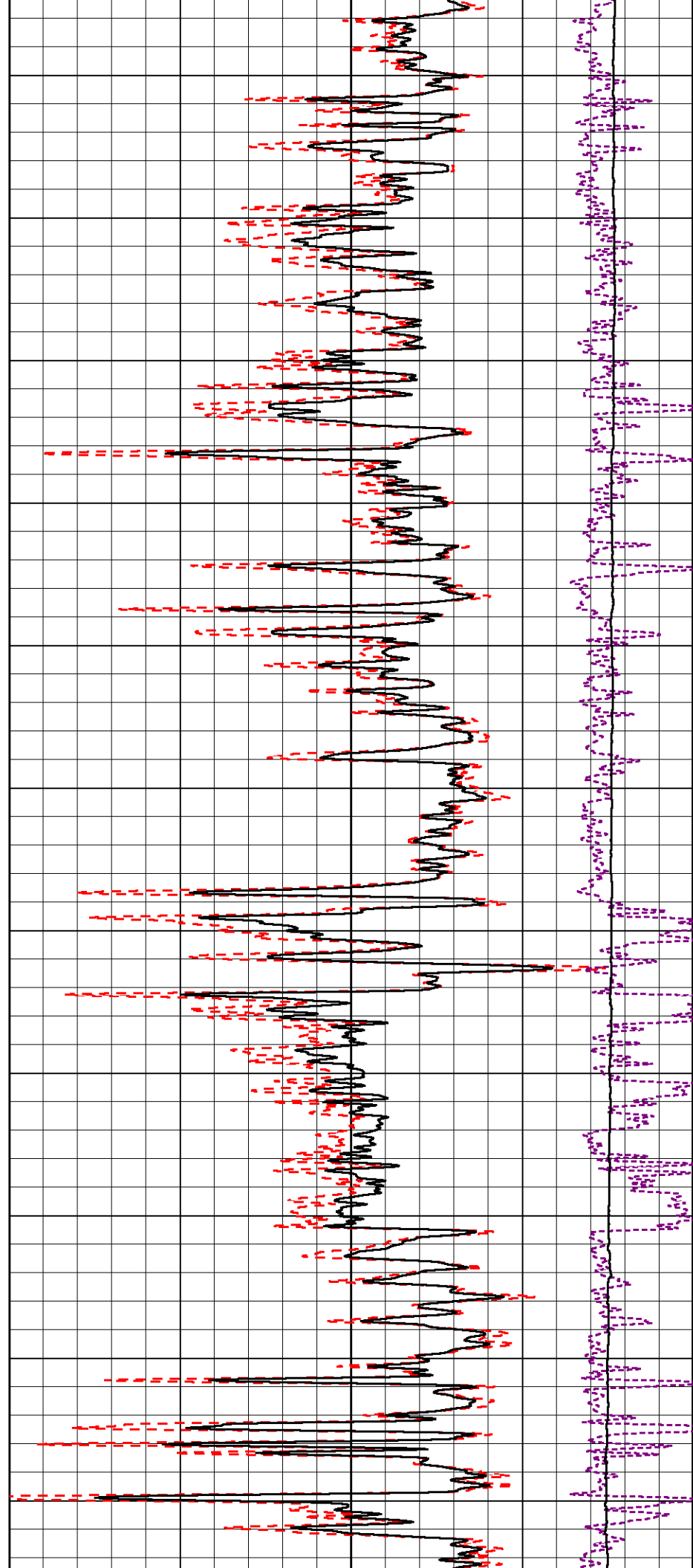
3200

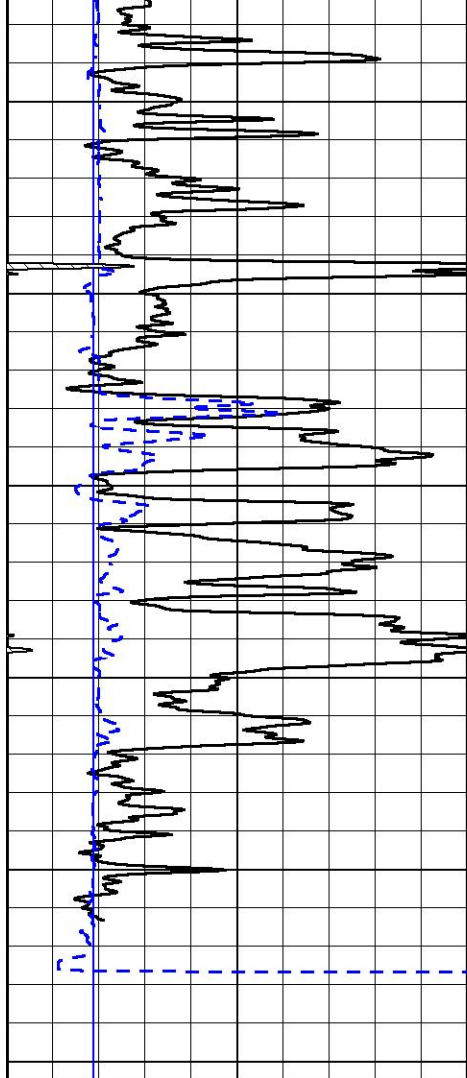
3250

3300

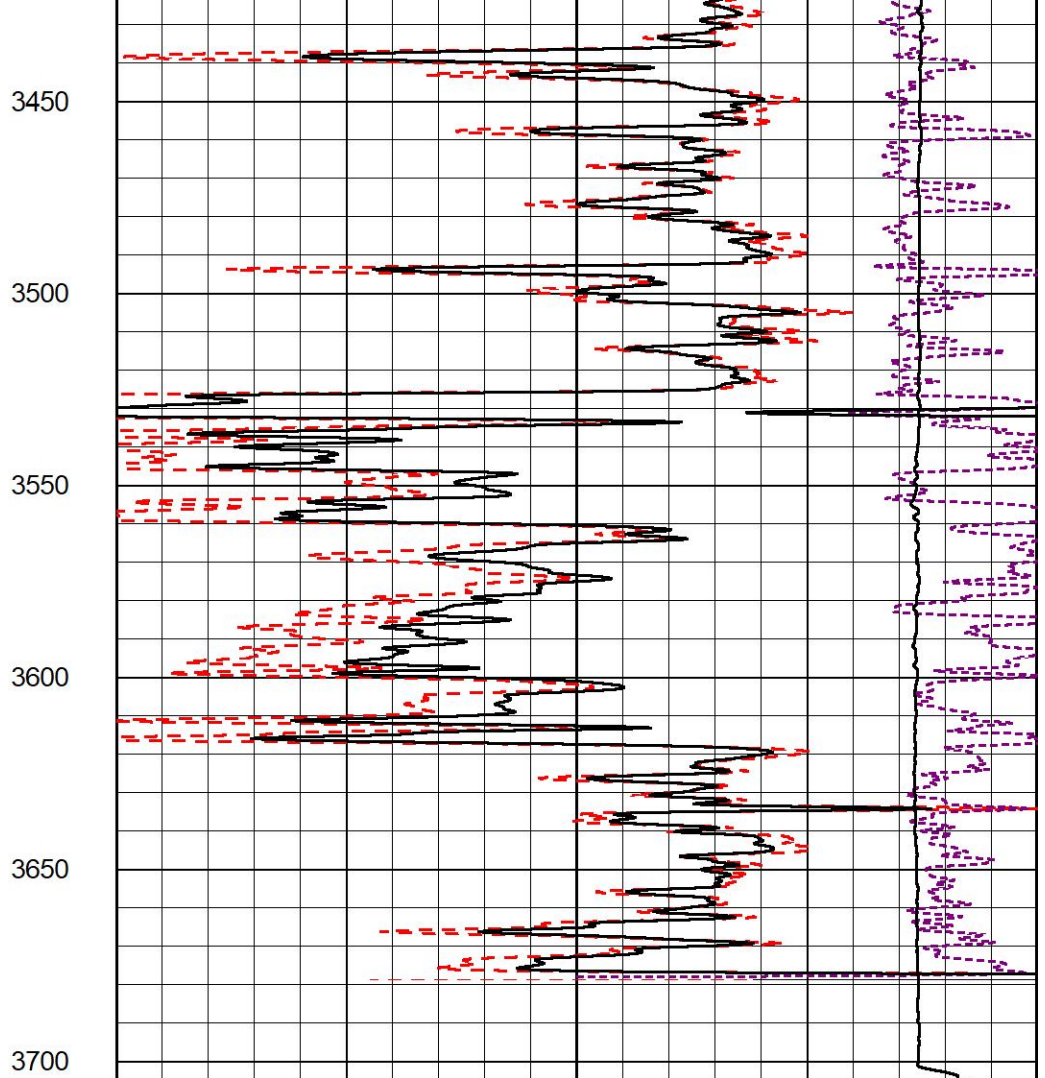
3350

3400





0	Gamma Ray (GAPI)	150
6	Caliper (in)	16



30	Compensated Density (pu)	-10
2	Bulk Density (g/cc)	3
15000	Line Tension (lb)	0
-0.25	Correction (g/cc)	0.25



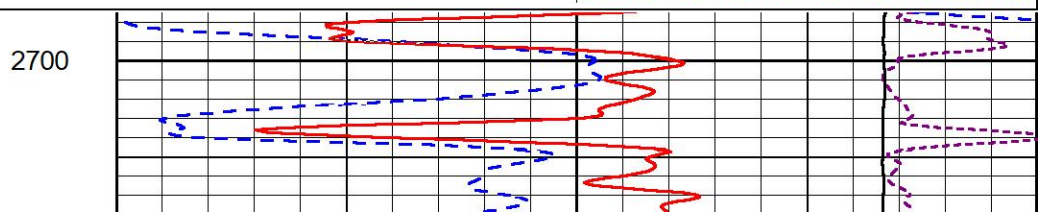
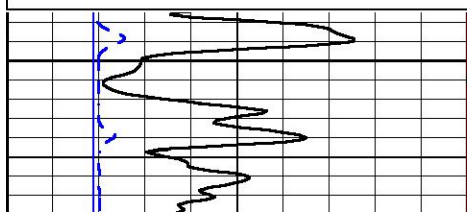
DETAIL SECTION

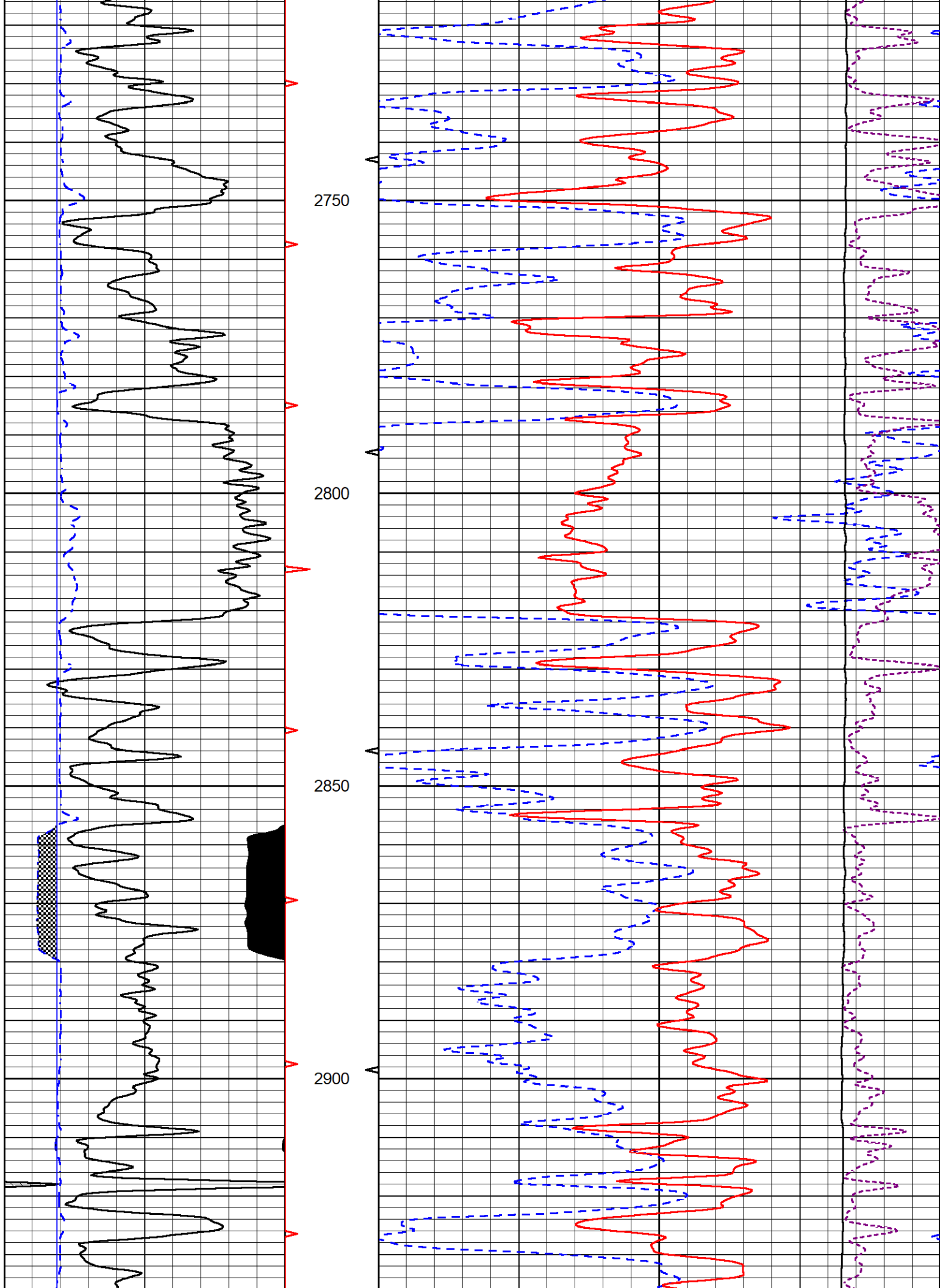
MAIN PASS

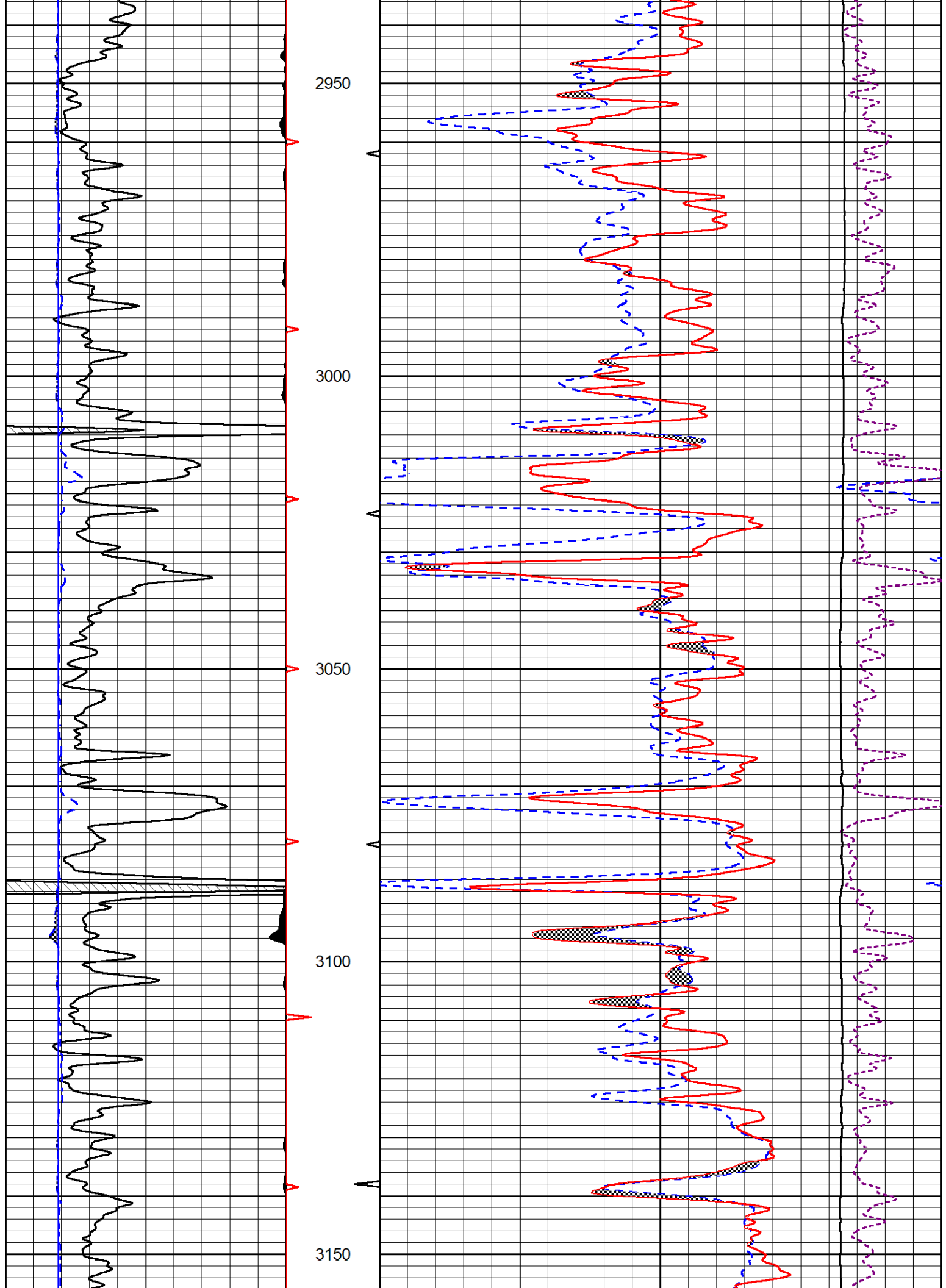
Database File darrah_fanshier 1-4.db
 Dataset Pathname stkml/pass3.1
 Presentation Format _CNDLS~1
 Dataset Creation Mon Oct 10 14:36:48 2022
 Charted by Depth in Feet scaled 1:240

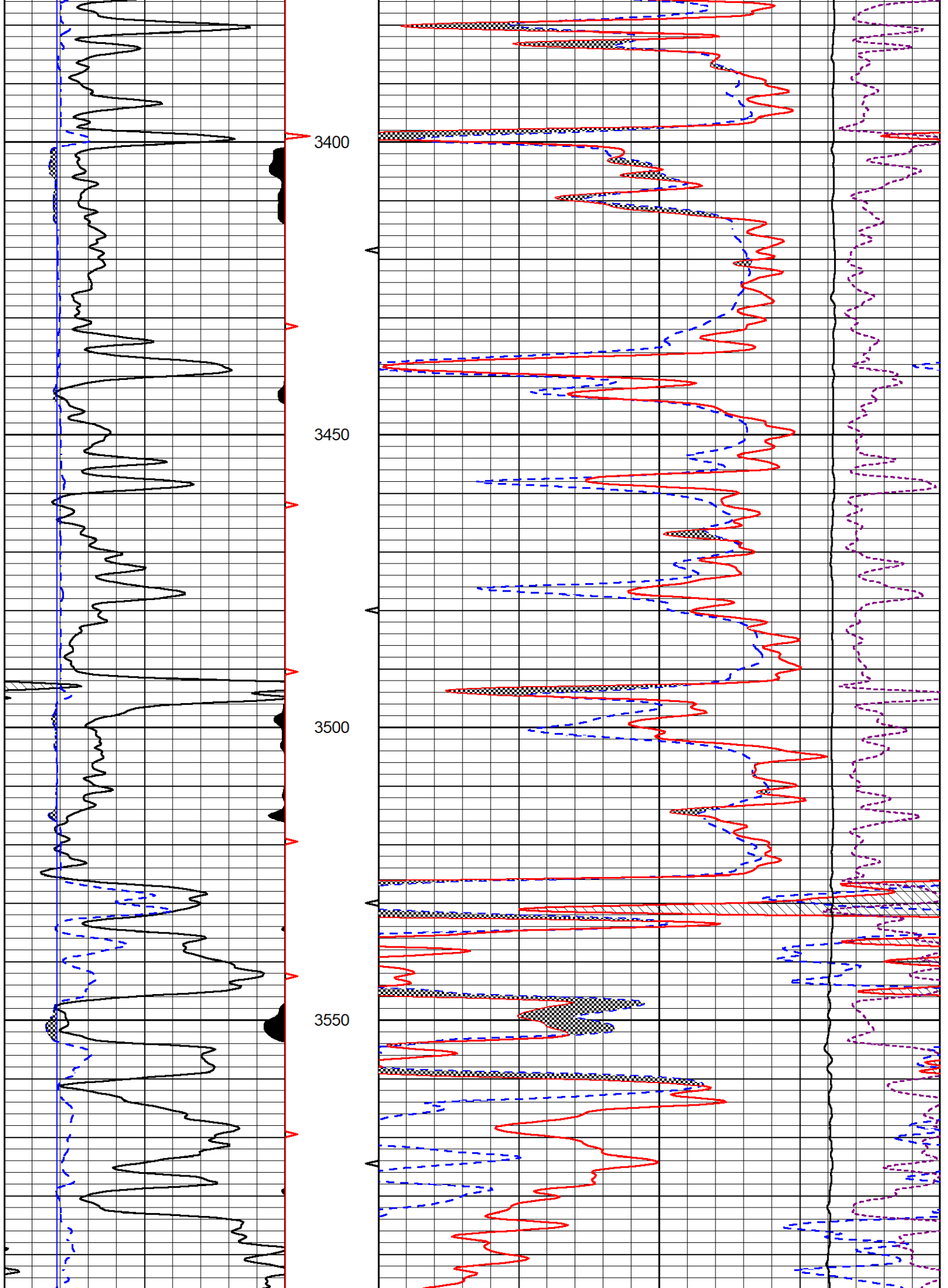
0	GR (GAPI)	150
6	DCAL (in)	16

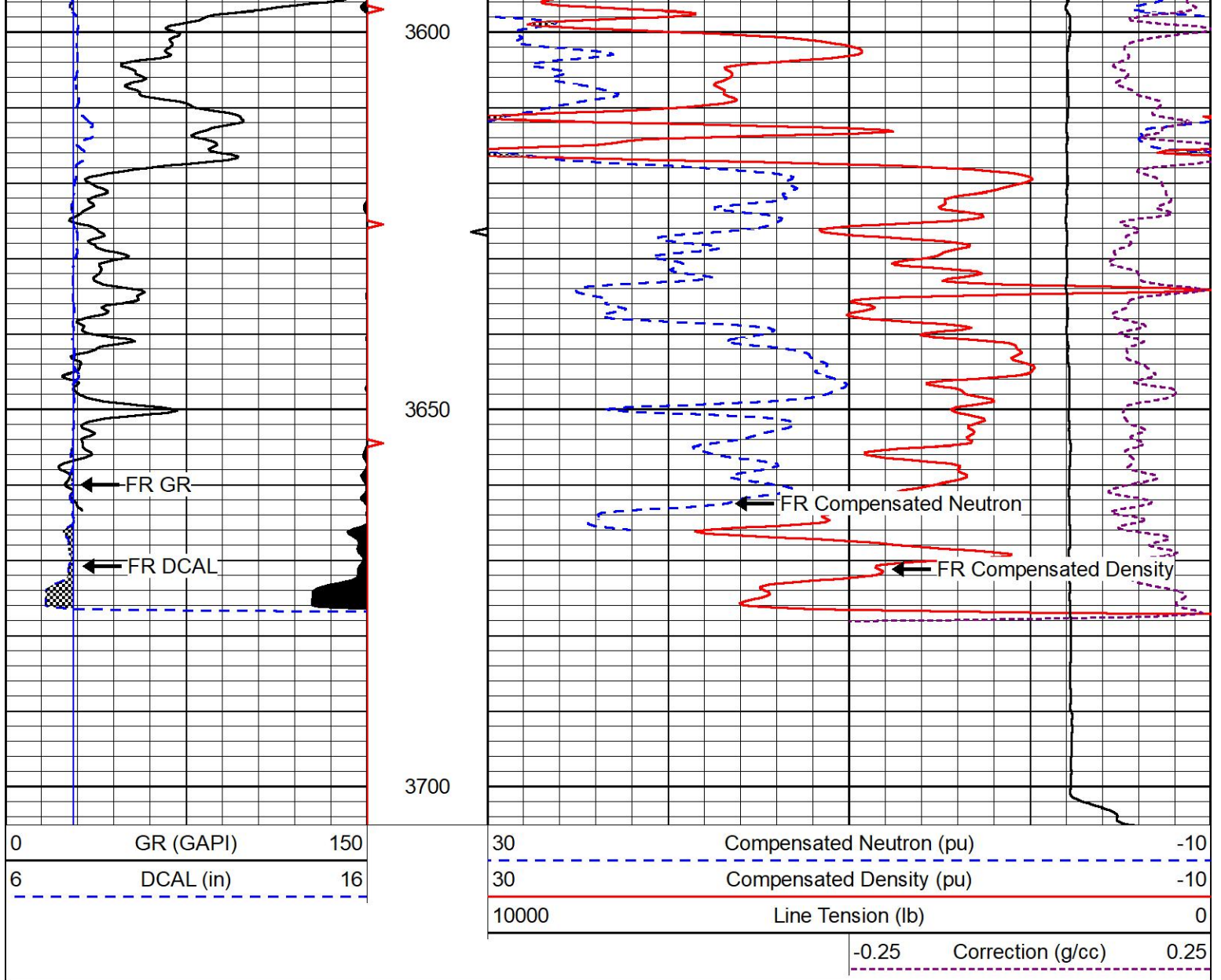
30	Compensated Neutron (pu)	-10
30	Compensated Density (pu)	-10
10000	Line Tension (lb)	0
-0.25	Correction (g/cc)	0.25







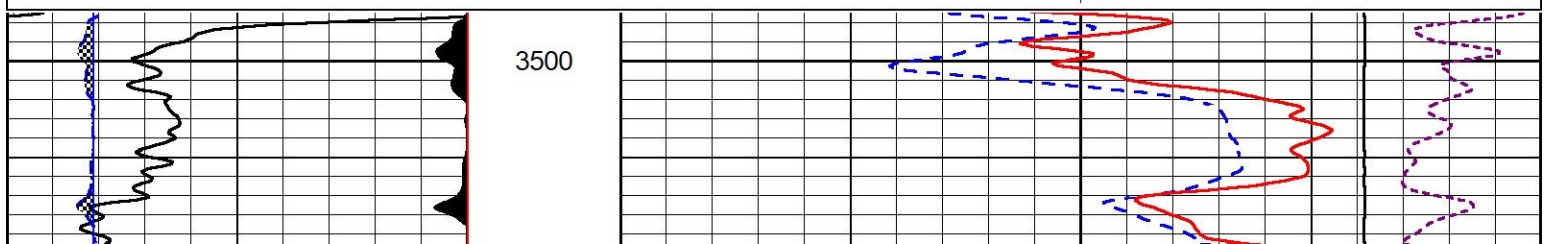
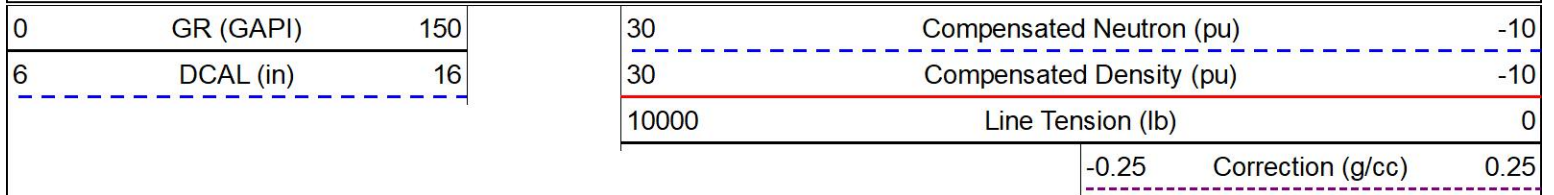


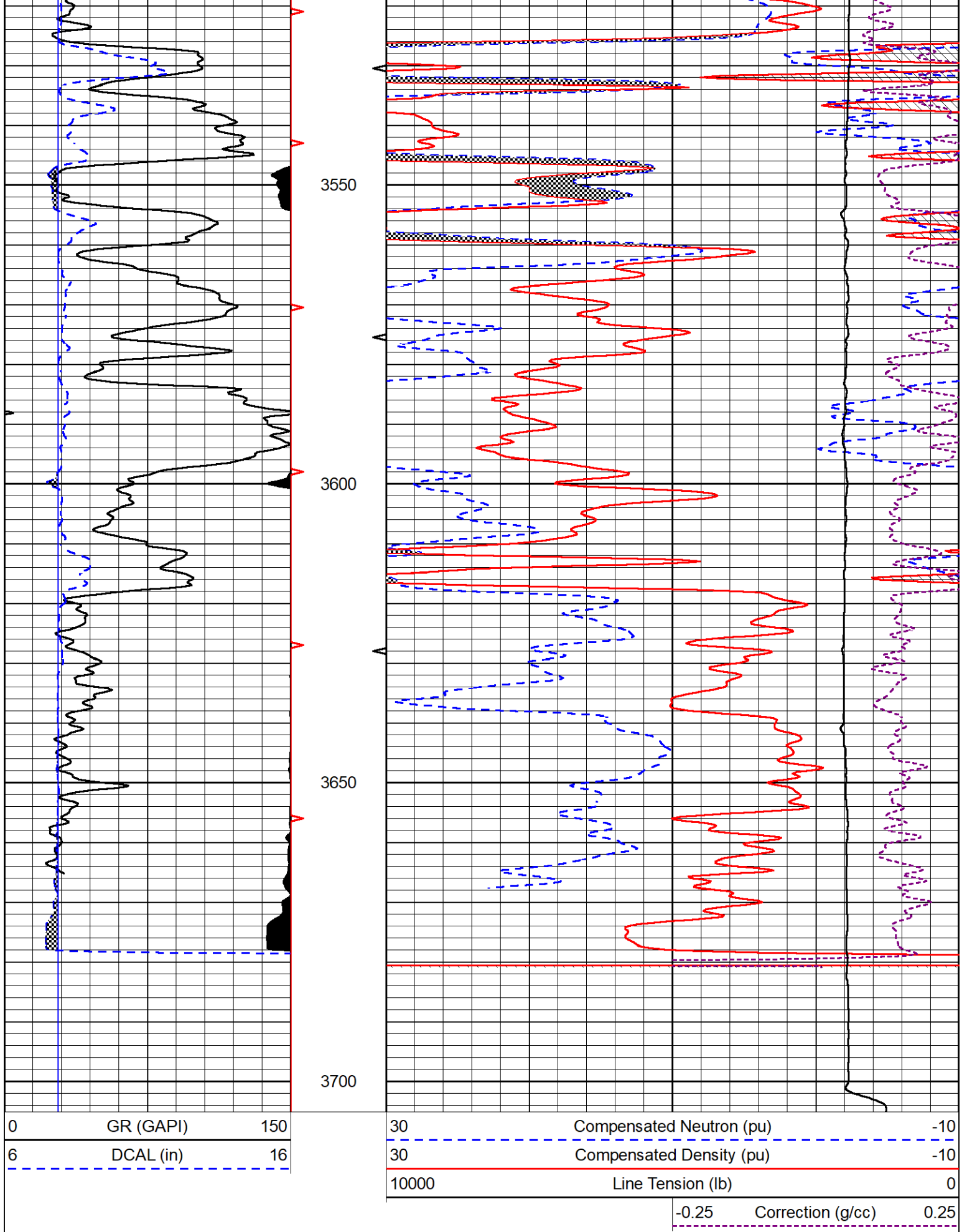


REPEAT SECTION

REPEAT PASS

Database File darrah_fanshier 1-4.db
 Dataset Pathname stkml/pass2.11
 Presentation Format _CNDLS~1
 Dataset Creation Mon Oct 10 14:00:09 2022
 Charted by Depth in Feet scaled 1:240





Calibration Report

Dual Induction Calibration Report

Serial-Model: 504 HT-M&W
 Surface Cal Performed: Mon Aug 1 06:26:43 2022

Loop:	Readings		References			Results	
	Air	Loop	Air	Loop		m	b
Deep	178.615	710.235	0.000	255.800	mmho/m	0.680	-19.000
Medium	161.982	1441.110	0.000	255.800	mmho/m	0.450	-46.000

Microlog Calibration Report

Serial-Model: 401-PSI STKBL ML
 Performed: Mon Oct 10 13:25:02 2022

	Readings		References			Results	
	Zero	Cal	Zero	Cal		m	b
Normal	0.0037	0.0043	0.0000	10.0000	Ohm-m	24000.0000	-1.8000
Inverse	0.1208	0.0013	0.0000	10.0000	Ohm-m	27000.0000	-1.0000
Caliper	1.0049	1.0846	5.5000	20.0000	in	135.0000	-131.2500

Compensated Density Calibration Report

Serial-Model: 303-03-M&W
 Source #: 21170B
 Master Calibration Performed: Mon Oct 10 13:32:26 2022

Master Calibration

	Density		Far Detector	Near Detector	
Magnesium	1.755	g/cc	3841.78	5151.73	cps
Aluminum	2.647	g/cc	700.98	3068.49	cps
Spine Angle = 73.06			Density/Spine Ratio = 0.502		
	Size		Reading		
Small Ring	4.00	in	1.17		
Large Ring	14.00	in	1.04		

Compensated Neutron Calibration Report

Serial-Model: 210-M&W
 Source #: N-1238
 Master Calibration Performed: Fri Dec 3 09:16:24 2021

Master Calibration

Detector	Readings	Target	Normalization
Short Space	6240.00 cps	1000.00 cps	1.6025
Long Space	460.00 cps	1000.00 cps	1.9500

Gamma Ray Calibration Report

Serial Number: 103
Tool Model: M&W
Performed: Fri Dec 3 12:13:24 2021

Calibrator Value: 500.0 GAPI

Background Reading: 28.0 cps

Calibrator Reading: 986.0 cps

Sensitivity: 0.5700 GAPI/cps



Company Darrah Oil Company, LLC
Well Fanshier #1-4
Field Shaeffer-Rothgarn
County Stafford
State Kansas