

MICRO LOG



Company AMERICAN WARRIOR, INC.
 Well SHRIMISE - FORD UNIT #1-35
 Field WILDCAT
 County HODGEMAN State KANSAS

Location: API #: 15-083-22025-0000
 986' FSL & 1818' FEL
 NE - NE - NW - NE
 SEC 35 TWP 22S RGE 24W
 Permanent Datum GROUND LEVEL Elevation 2331
 Log Measured From KELLY BUSHING 8' A.G.L.
 Drilling Measured From KELLY BUSHING
 Other Services CDL/CNL/PE DIL/SONIC
 Elevation K.B. 2339 D.F. 2337 G.L. 2331

Date	2/9/23	
Run Number	TWO	
Depth Driller	4680	
Depth Logger	4675	
Bottom Logged Interval	4659	
Top Log Interval	3700	
Casing Driller	8 5/8"@221'	
Casing Logger	221	
Bit Size	7 7/8"	
Type Fluid in Hole	CHEMICAL MUD	CHLORIDES: 4,700 PPM
Density / Viscosity	9.4/50	
pH / Fluid Loss	10.5/7.6	
Source of Sample	FLOWLINE	
Rm @ Meas. Temp	1.00@60F	
Rmf @ Meas. Temp	.750@60F	
Rmc @ Meas. Temp	1.20@60F	
Source of Rmf / Rmc	MEASUREMENT	
Rm @ BHT	.492@122F	
Time Circulation Stopped	3.5 HOURS	
Time Logger on Bottom	11:00 A.M.	
Maximum Recorded Temperature	122F	
Equipment Number	8916	
Location	HAYS, KANSAS	
Recorded By	JEFF LUEBBERS	
Witnessed By	JASON T. ALM	

<<< Fold Here >>>

All interpretations are opinions based on inferences from electrical or other measurements and we cannot and do not guarantee the accuracy or correctness of any interpretation, and we shall not, except in the case of gross or willful negligence on our part, be liable or responsible for any loss, costs, damages, or expenses incurred or sustained by anyone resulting from any interpretation made by any of our officers, agents or employees. These interpretations are also subject to our general terms and conditions set out in our current Price Schedule.

Comments

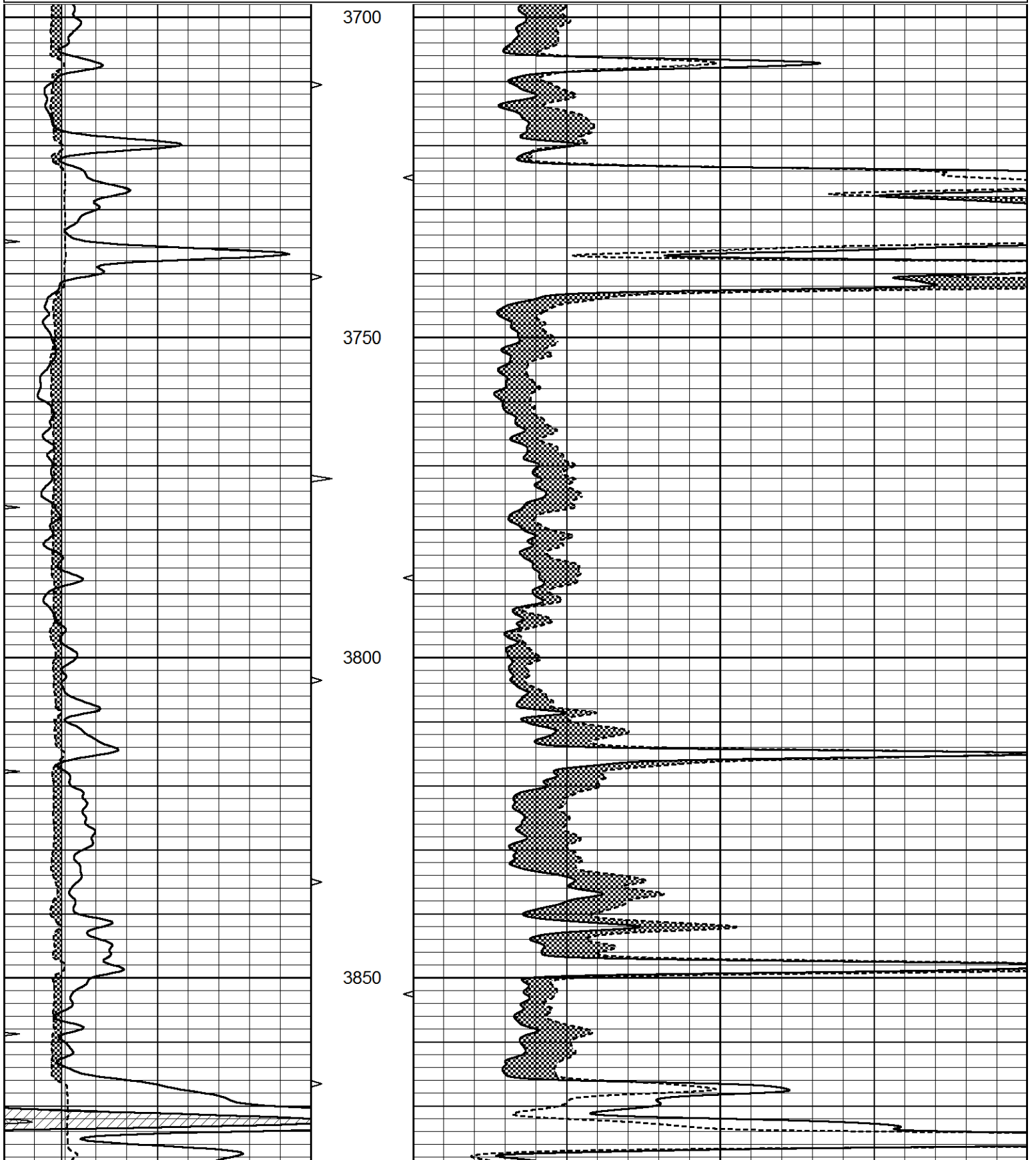
THANK YOU FOR USING ELI WIRELINE, HAYS, KS. (785) 628-6395
 DIRECTIONS:
 JETMORE, KS., 1 1/4W. ON HWY 156, 1N., W. INTO

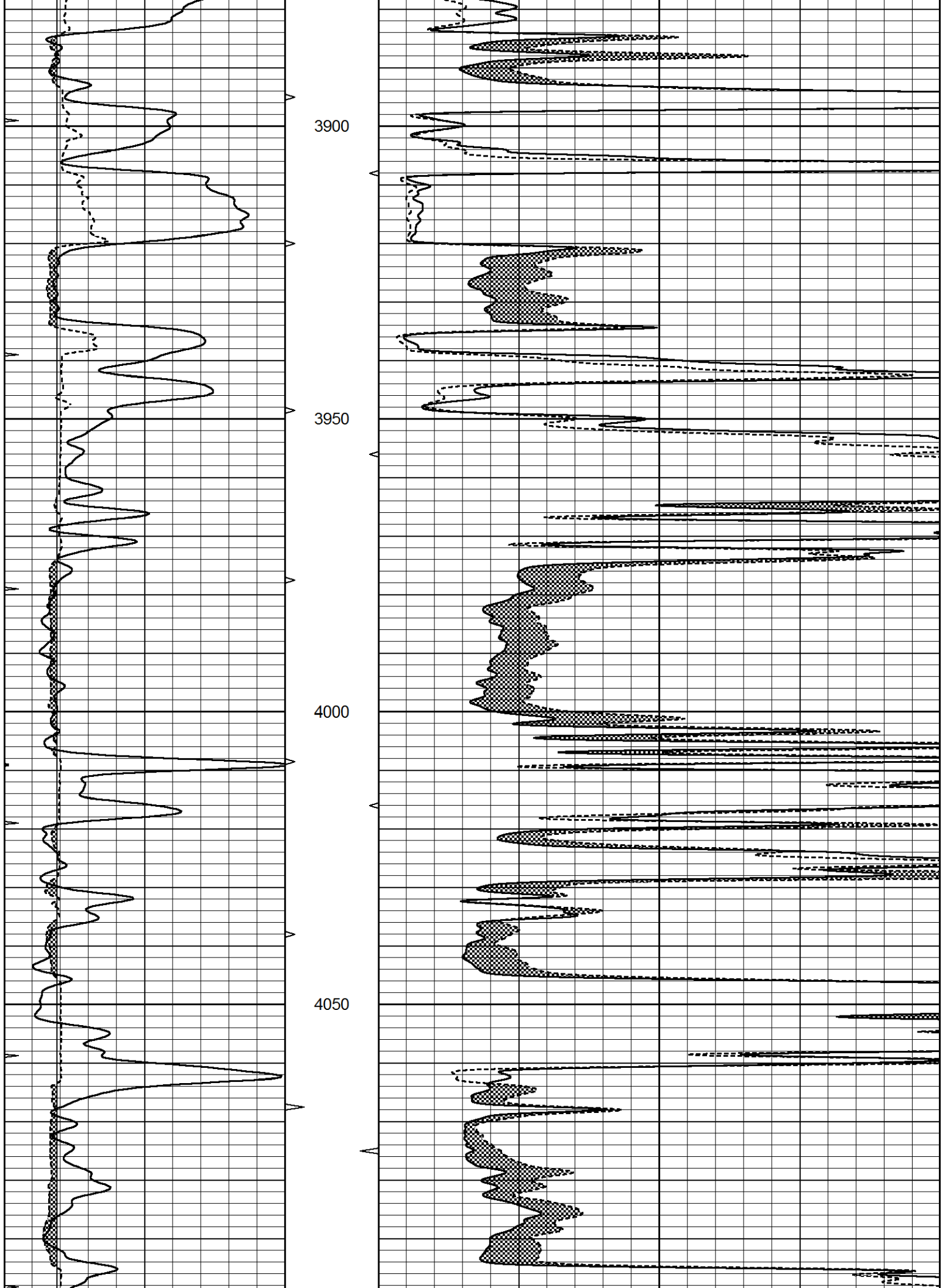


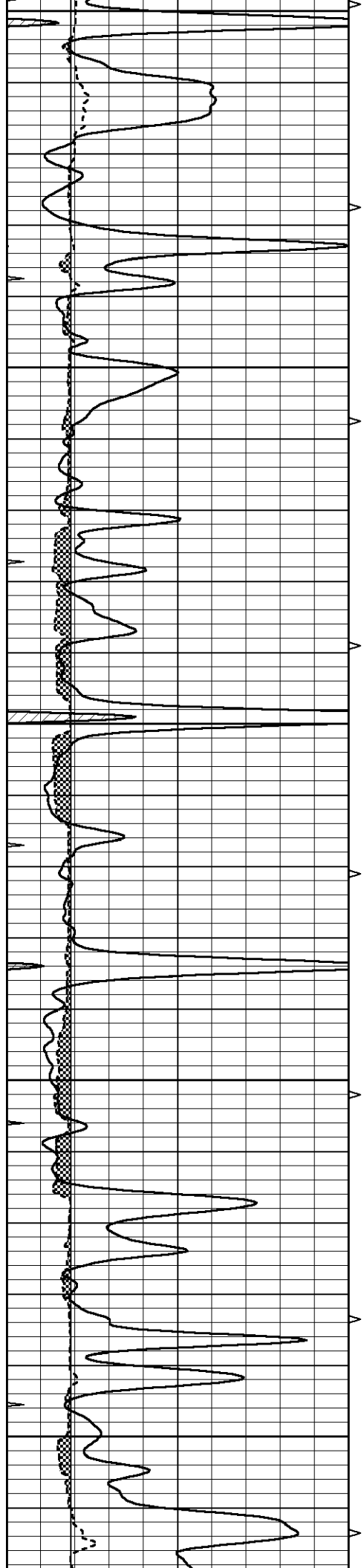
MAIN SECTION

Database File 7504pe.db
 Dataset Pathname pass12.1
 Presentation Format _micro
 Dataset Creation Thu Feb 09 12:15:05 2023
 Charted by Depth in Feet scaled 1:240

0	GAMMA RAY (GAPI)	150	ABHV	0	MEL1.5 (Ohm-m)	40
6	CALIPER (in)	16	10 (ft3)	0	MEL2.0 (Ohm-m)	40
0	MINMK	20	TBHV			
			0 (ft3)	10		







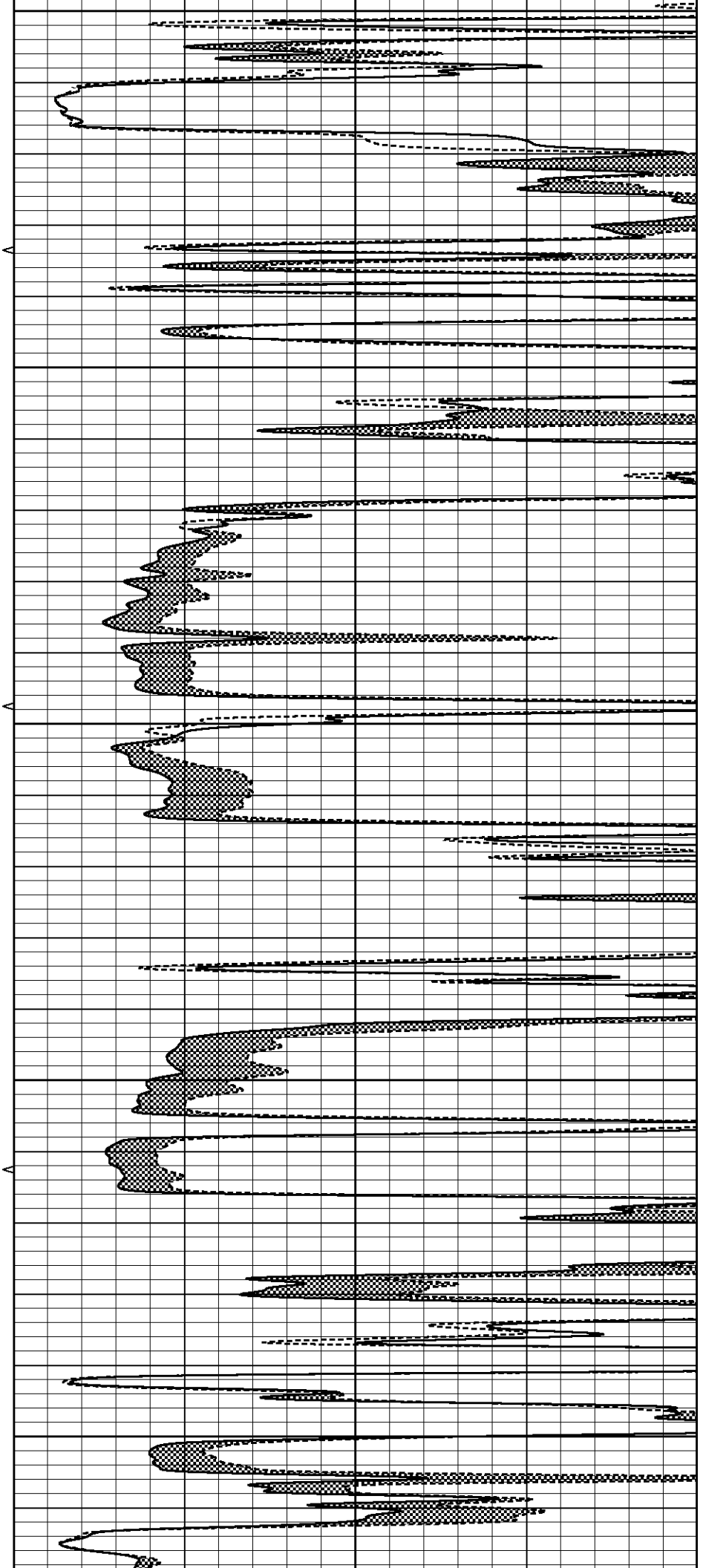
4100

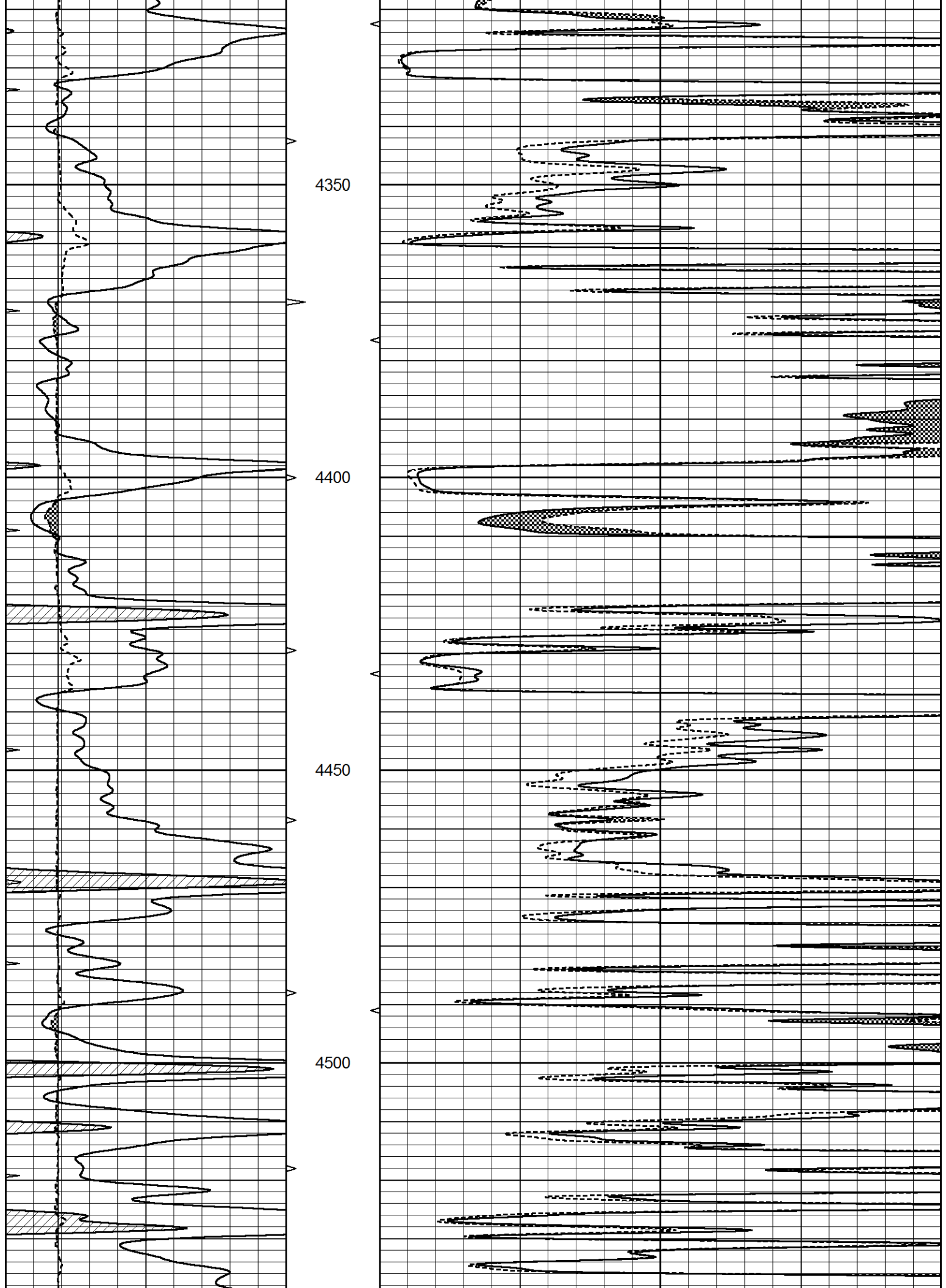
4150

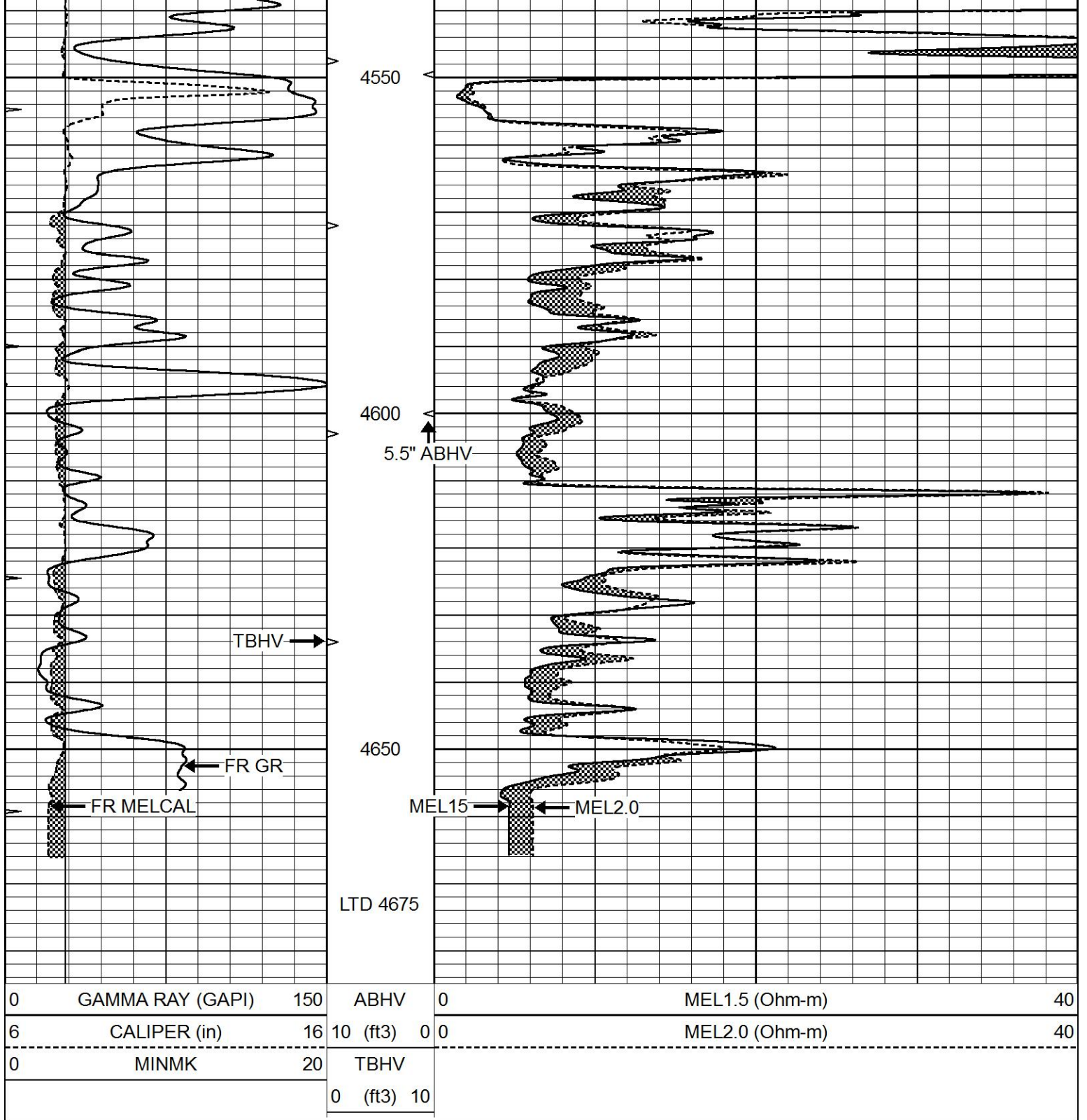
4200

4250

4300





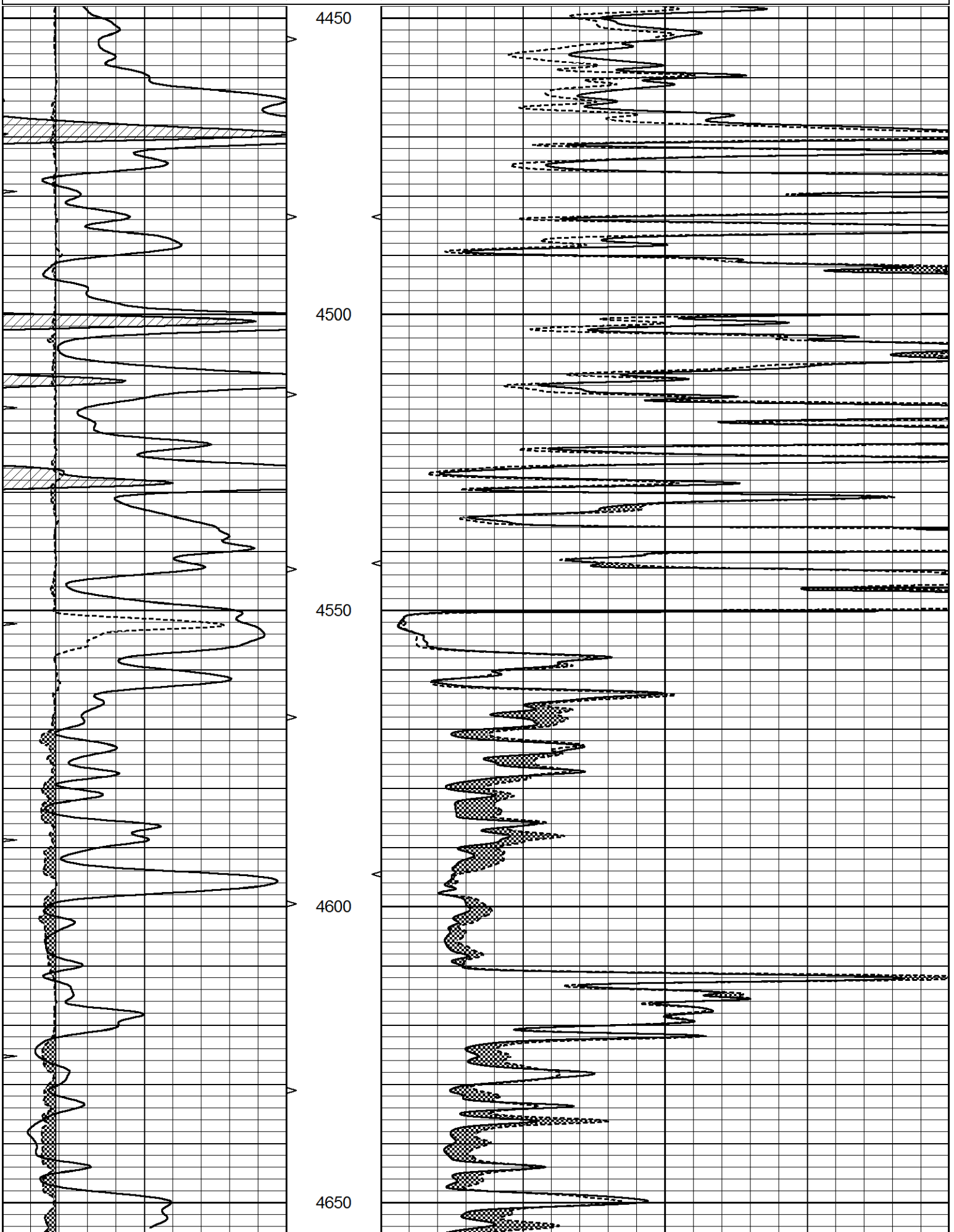


REPEAT SECTION

Database File 7504pe.db
 Dataset Pathname pass11.3
 Presentation Format _micro
 Dataset Creation Thu Feb 09 11:55:52 2023
 Charted by Depth in Feet scaled 1:240

0	GAMMA RAY (GAPI)	150	ABHV	0	MEL1.5 (Ohm-m)	40
6	CALIPER (in)	16	10 (ft3)	0 0	MEL2.0 (Ohm-m)	40

0	MINMK	20	TBHV
			0 (ft3) 10



0	GAMMA RAY (GAPI)	150	ABHV	0	MEL1.5 (Ohm-m)	40
6	CALIPER (in)	16	10 (ft3) 0	0	MEL2.0 (Ohm-m)	40
0	MINMK	20	TBHV			
			0 (ft3) 10			

Calibration Report

Database File 7504pe.db
Dataset Pathname pass12.1
Dataset Creation Thu Feb 09 12:15:05 2023

MICRO Calibration Report

Serial Number: MICRO6
Tool Model: PROBE
Performed: Thu Feb 09 11:39:23 2023

Caliper Calibration: Gain=3.896 Offset=3.299

References	Low Cal	High Cal
Readings	7.000	14.000
	0.950	2.747

1.5" Calibration: Gain=40.000 Offset=-0.300

References	Low Cal	High Cal
Readings	0.000	20.000
	0.000	1.219

2" Calibration: Gain=46.000 Offset=-0.500

References	Low Cal	High Cal
Readings	0.000	20.000
	0.004	0.985

Gamma Ray Calibration Report

Serial Number: GR5
Tool Model: OPEN
Performed: Tue Jan 24 13:21:23 2023

Calibrator Value: 1.0 GAPI

Background Reading: 0.0 cps
Calibrator Reading: 1.0 cps

Sensitivity: 0.6000 GAPI/cps