



DUAL INDUCTION LOG

Company AMERICAN WARRIOR, INC.

Well SHRIMSE - FORD UNIT #1-35

Field WILDCAT

County HODGEMAN State KANSAS

Location: API #: 15-083-22025-0000

Permanent Datum GROUND LEVEL Elevation 2331
Log Measured From KELLY BUSHING 8' A.G.L.
Drilling Measured From KELLY BUSHING

SEC 35 TWP 22S RGE 24W

Other Services
CDL/CNL/PE
MEL/SONIC
Elevation
K.B. 2339
D.F. 2337
G.L. 2331

Date	2/9/23
Run Number	ONE
Depth Driller	4680
Depth Logger	4675
Bottom Logged Interval	4673
Top Log Interval	00
Casing Driller	8 5/8"@221'
Casing Logger	221
Bit Size	7 7/8"
Type Fluid in Hole	CHEMICAL MUD
Density / Viscosity	9.4/50
pH / Fluid Loss	10.5/7.6
Source of Sample	FLOWLINE
Rm @ Meas. Temp	1.00@60F
Rmf @ Meas. Temp	.750@60F
Rmc @ Meas. Temp	1.20@60F
Source of Rmf / Rmc	MEASUREMENT
Rm @ BHT	.492@122F
Time Circulation Stopped	2 HOURS
Time Logger on Bottom	9:00 A.M.
Maximum Recorded Temperature	122F
Equipment Number	8916
Location	HAYS, KANSAS
Recorded By	JEFF LUEBBERS
Witnessed By	JASON T. ALM

<<< Fold Here >>>

All interpretations are opinions based on inferences from electrical or other measurements and we cannot and do not guarantee the accuracy or correctness of any interpretation, and we shall not, except in the case of gross or willful negligence on our part, be liable or responsible for any loss, costs, damages, or expenses incurred or sustained by anyone resulting from any interpretation made by any of our officers, agents or employees. These interpretations are also subject to our general terms and conditions set out in our current Price Schedule.

Comments

THANK YOU FOR USING ELI WIRELINE, HAYS, KS. (785) 628-6395
DIRECTIONS:
JETMORE, KS., 1 1/4W. ON HWY 156, 1N., W. INTO

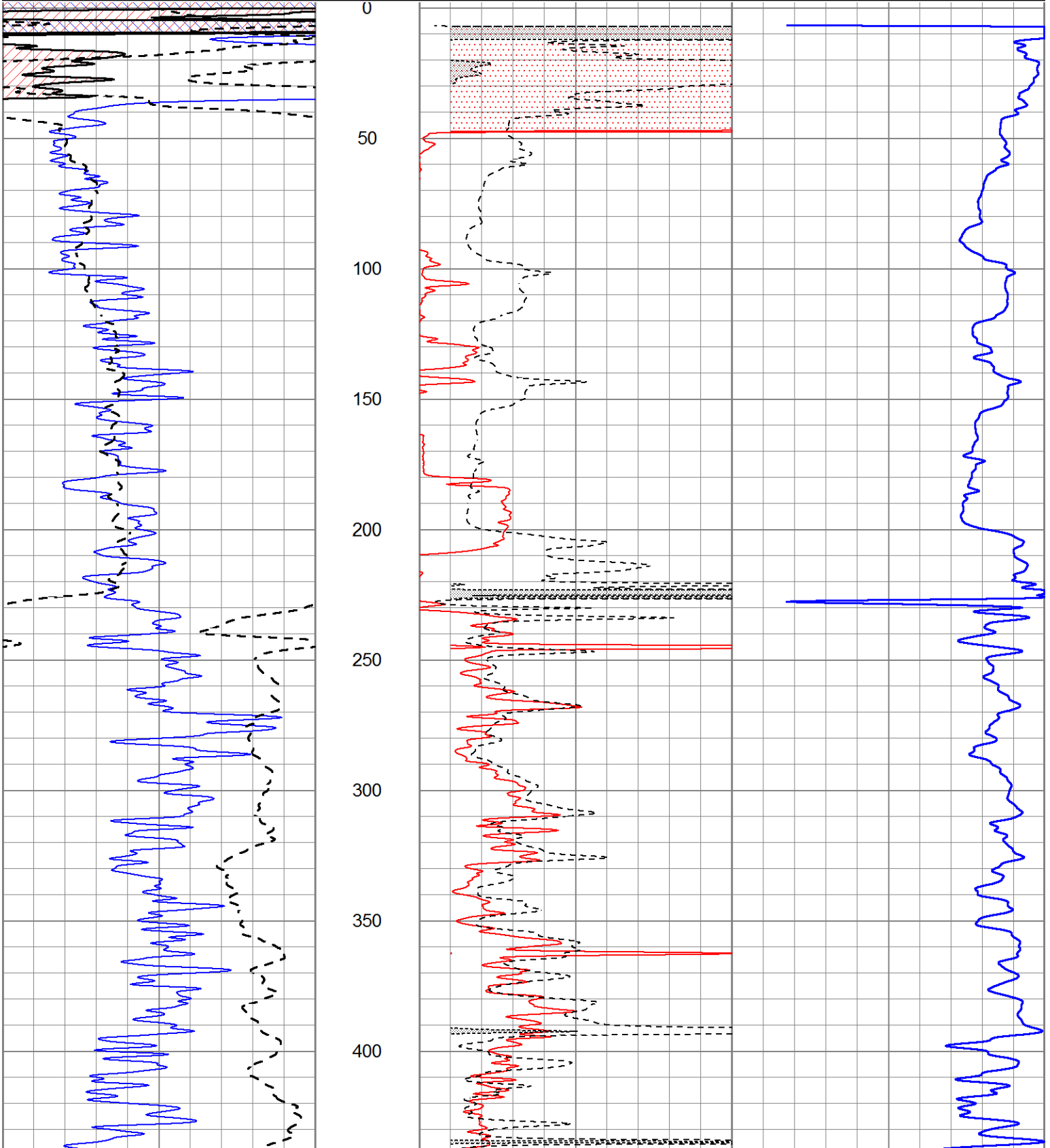


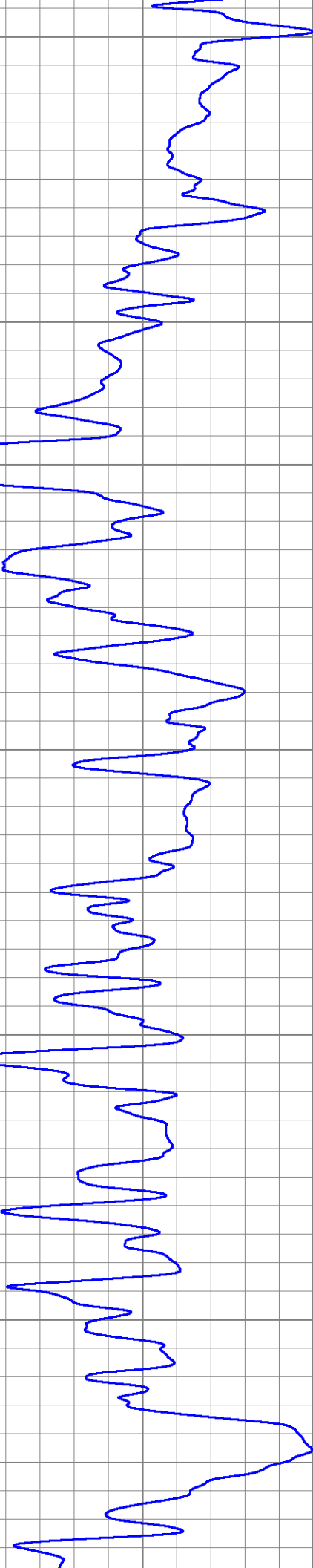
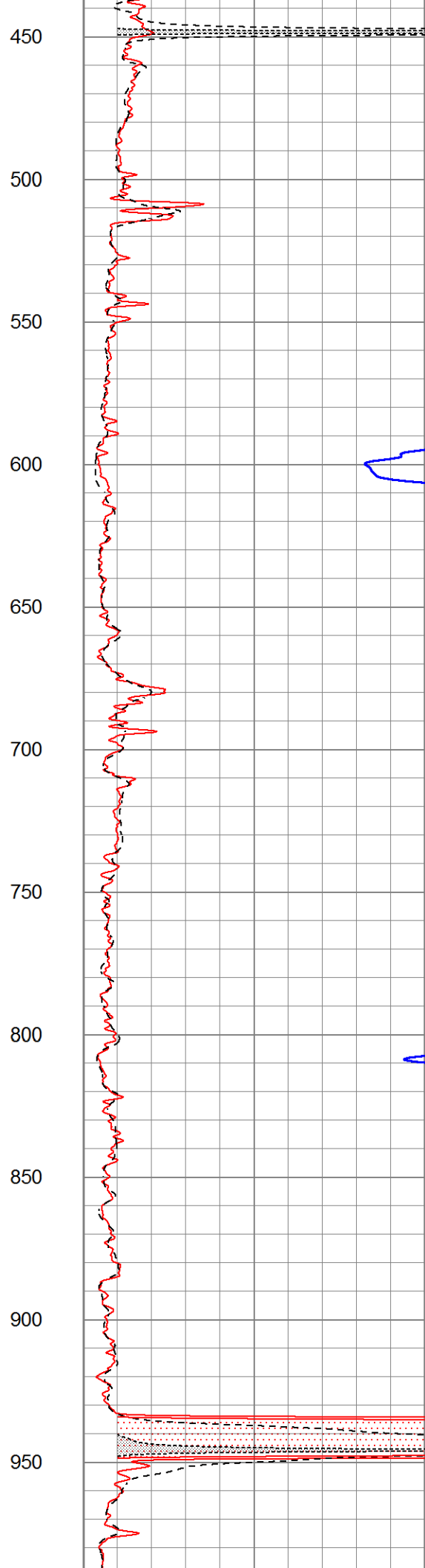
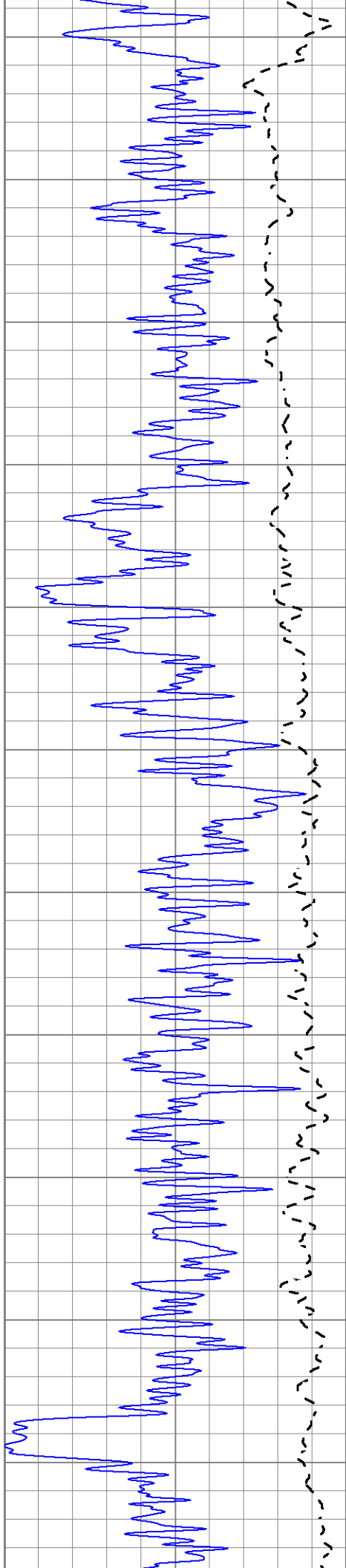
MAIN SECTION

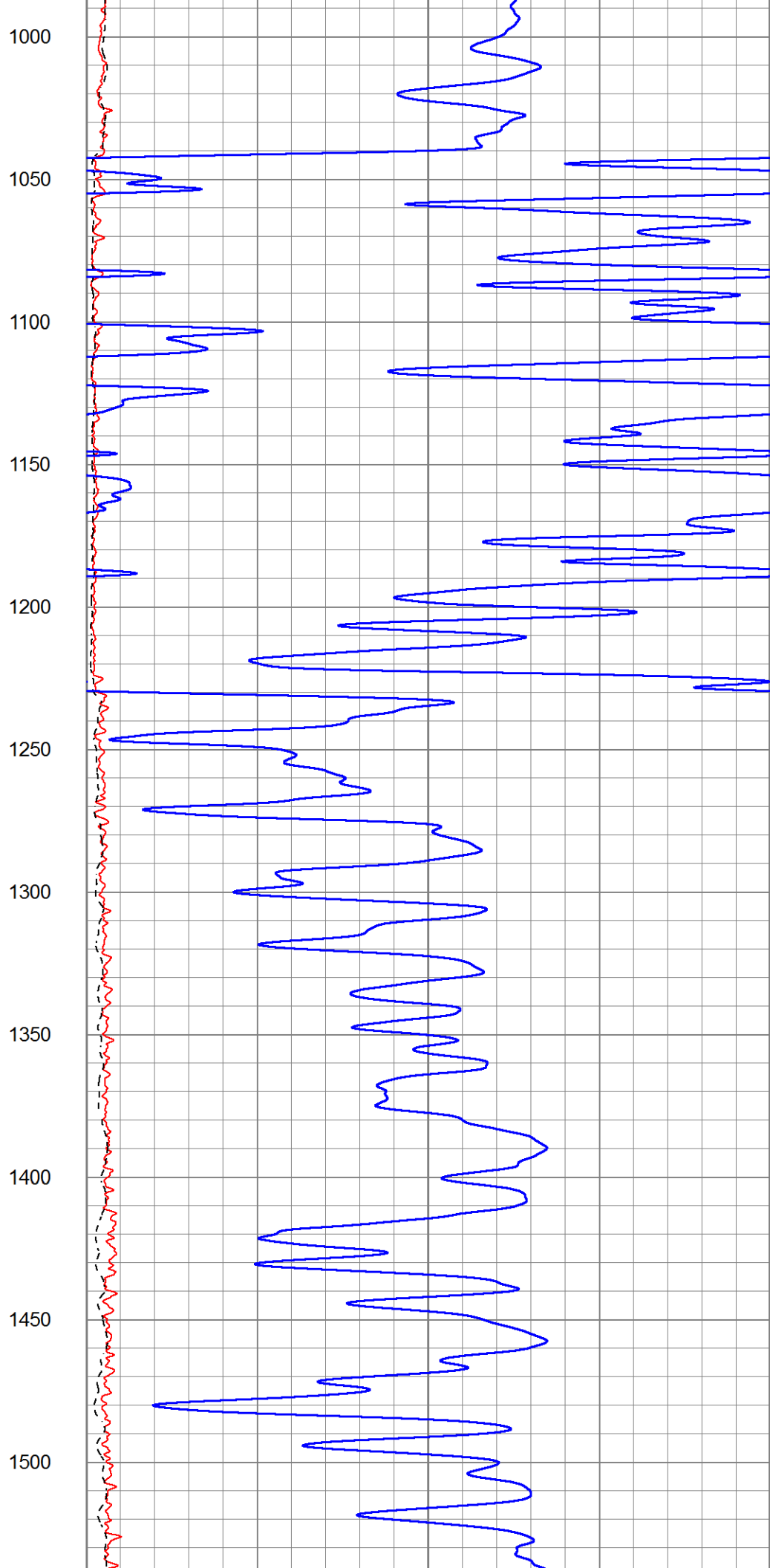
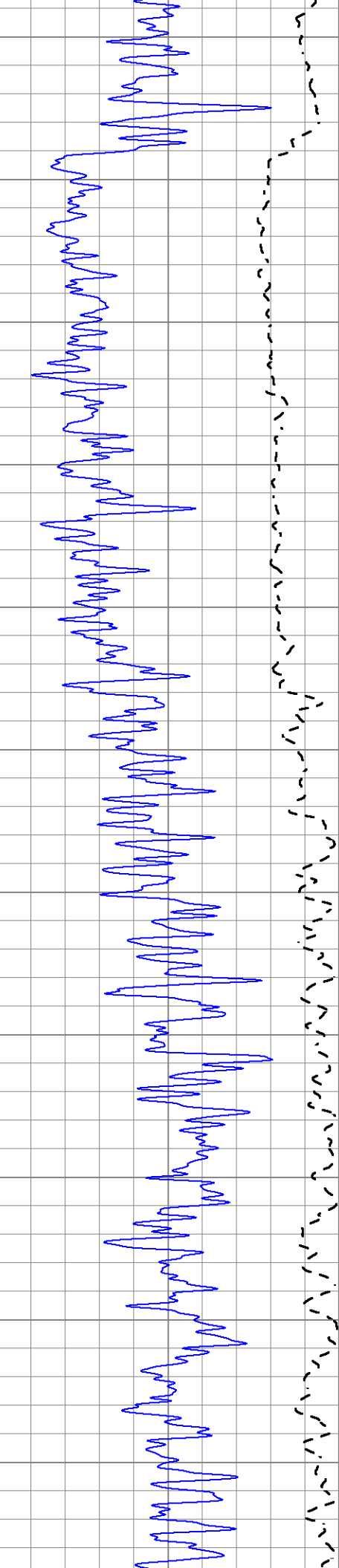
Database File 7504pe.db
 Dataset Pathname pass3.1M
 Presentation Format _dil2
 Dataset Creation Thu Feb 09 10:56:34 2023
 Charted by Depth in Feet scaled 1:600

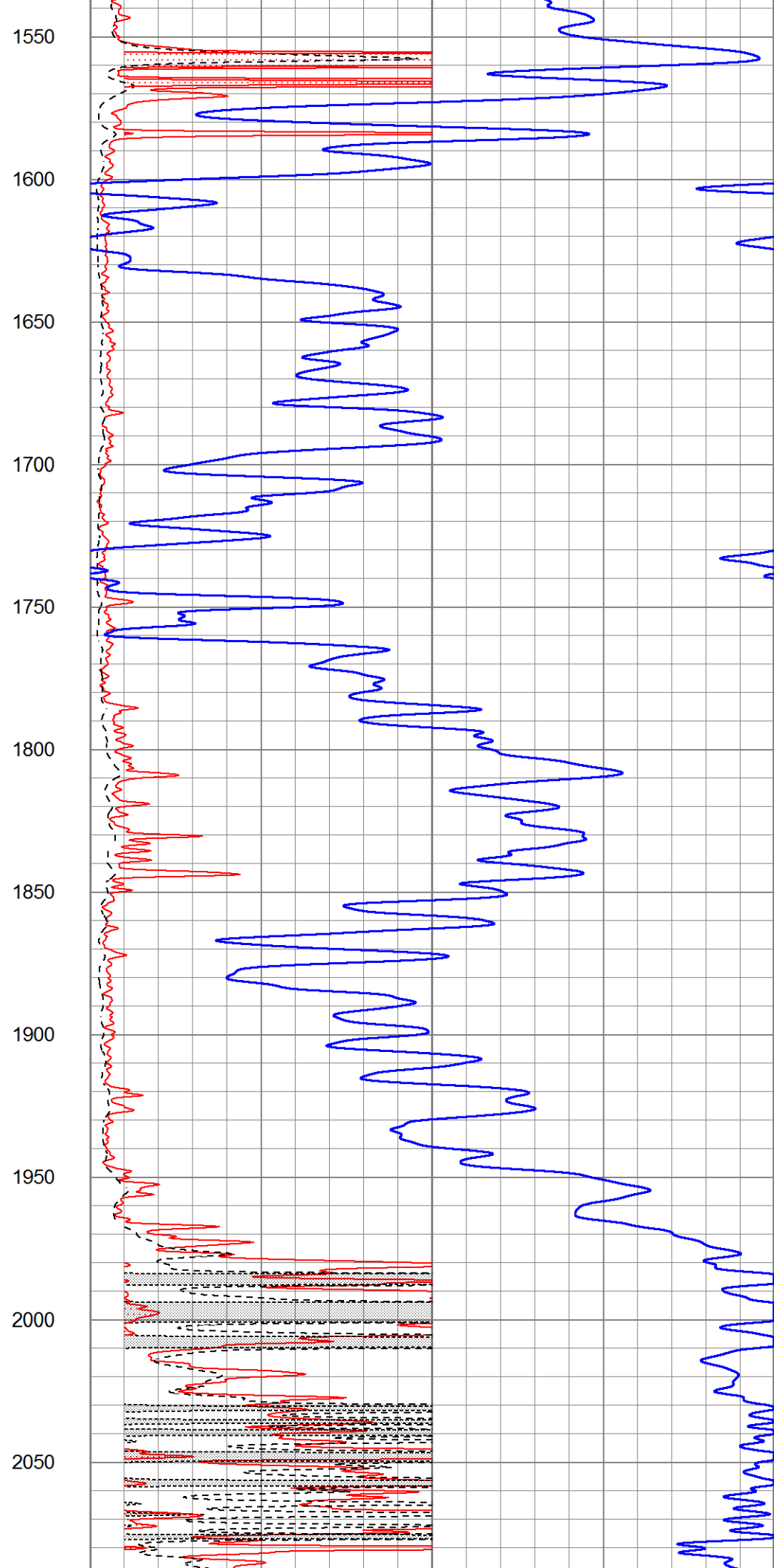
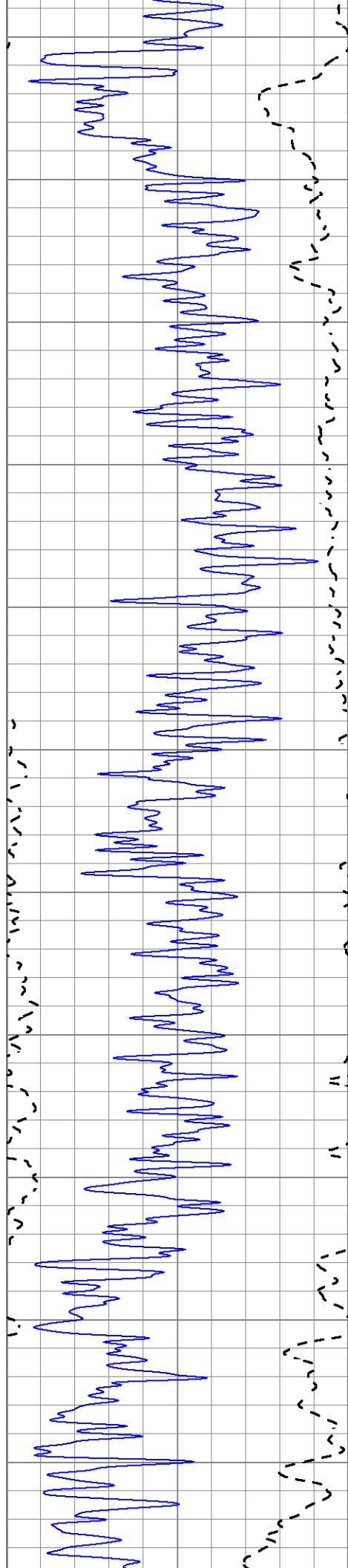
0 Gamma Ray (GAPI) 150
 -100 SP (mV) 100

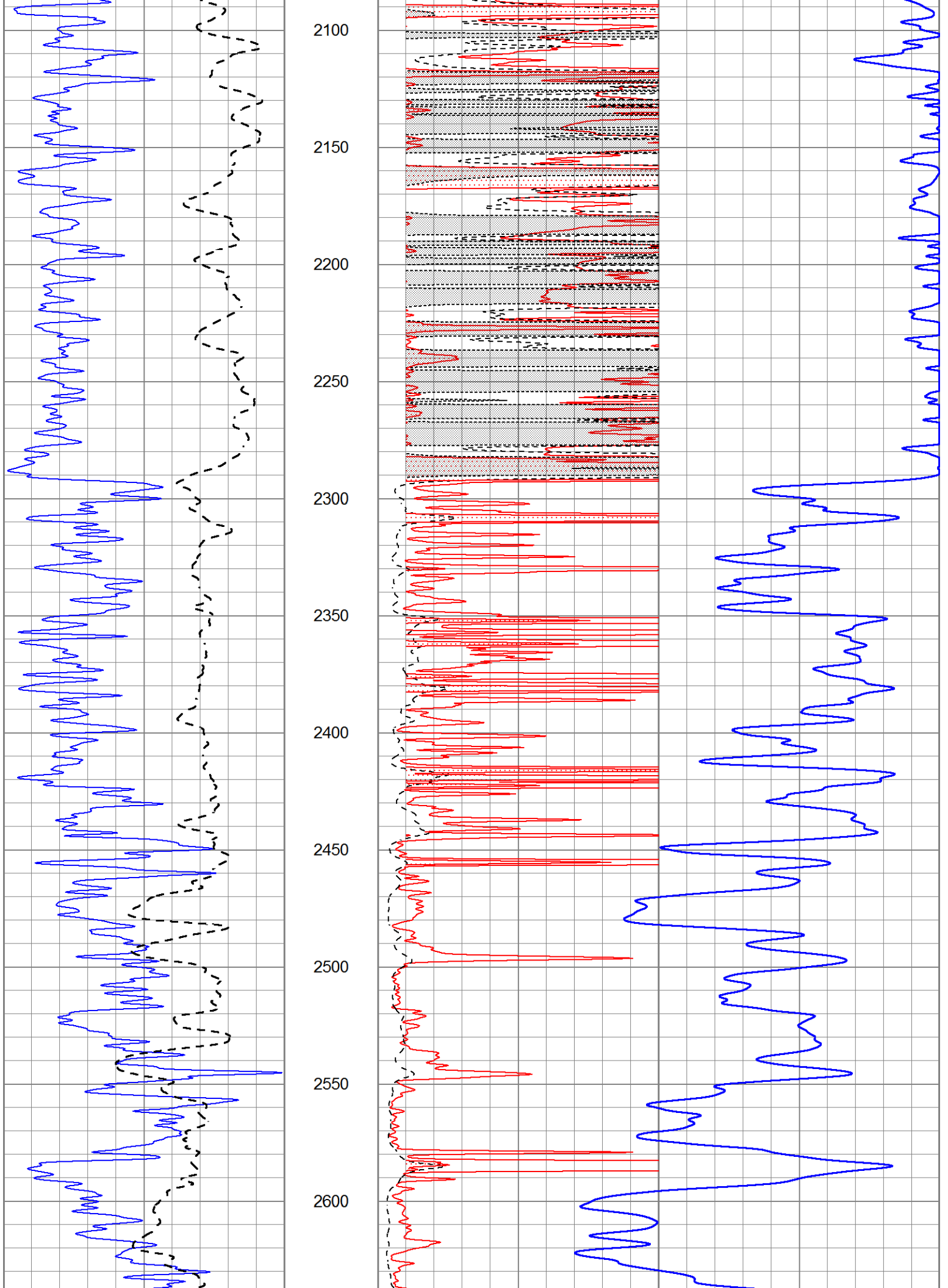
1000 CILD (mmho/m) 0
 0 RLL3 (Ohm-m) 50
 0 RILD (Ohm-m) 50
 50 RILD X10 (Ohm-m) 500
 50 RLL3 X10 (Ohm-m) 500

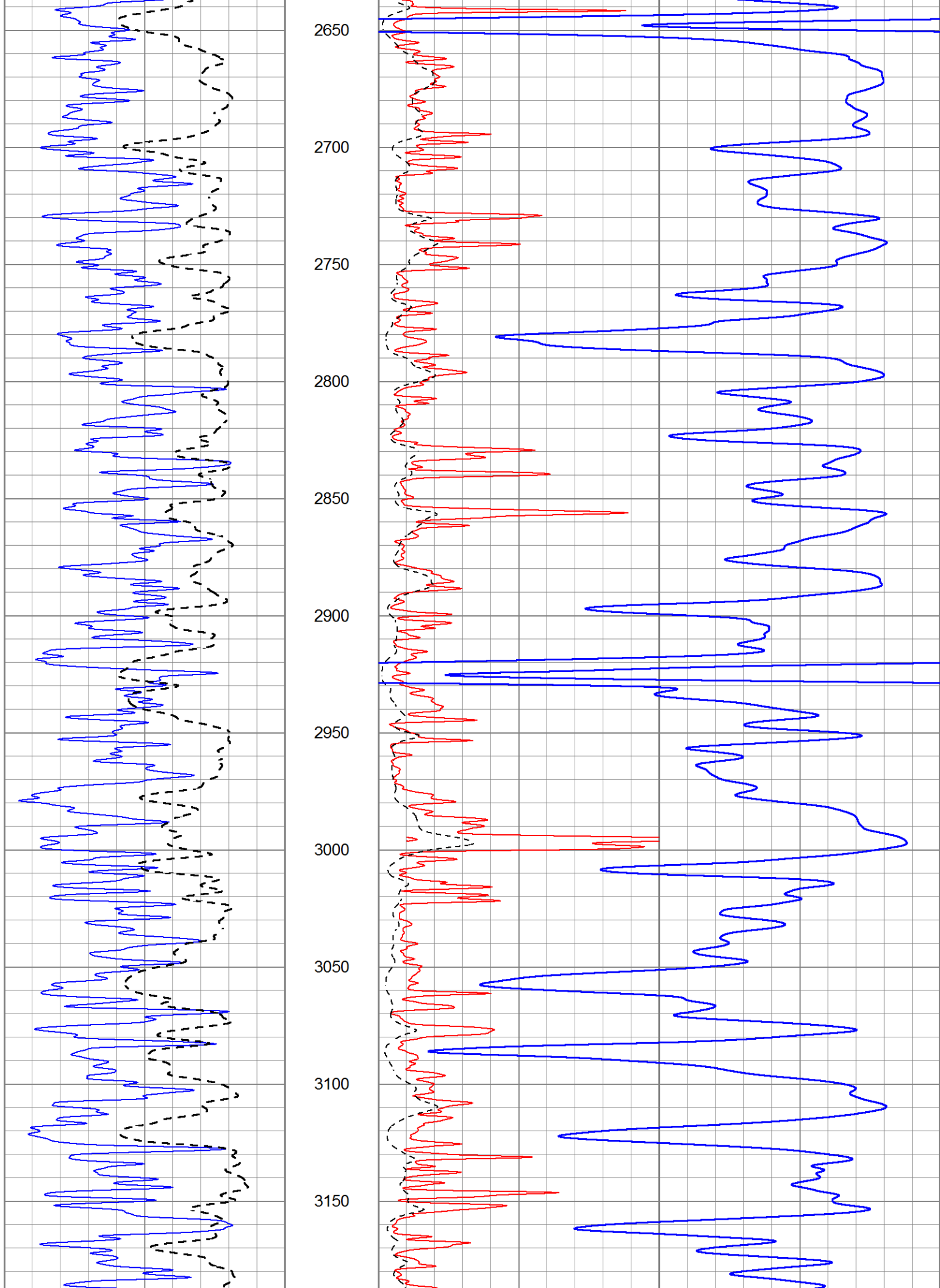


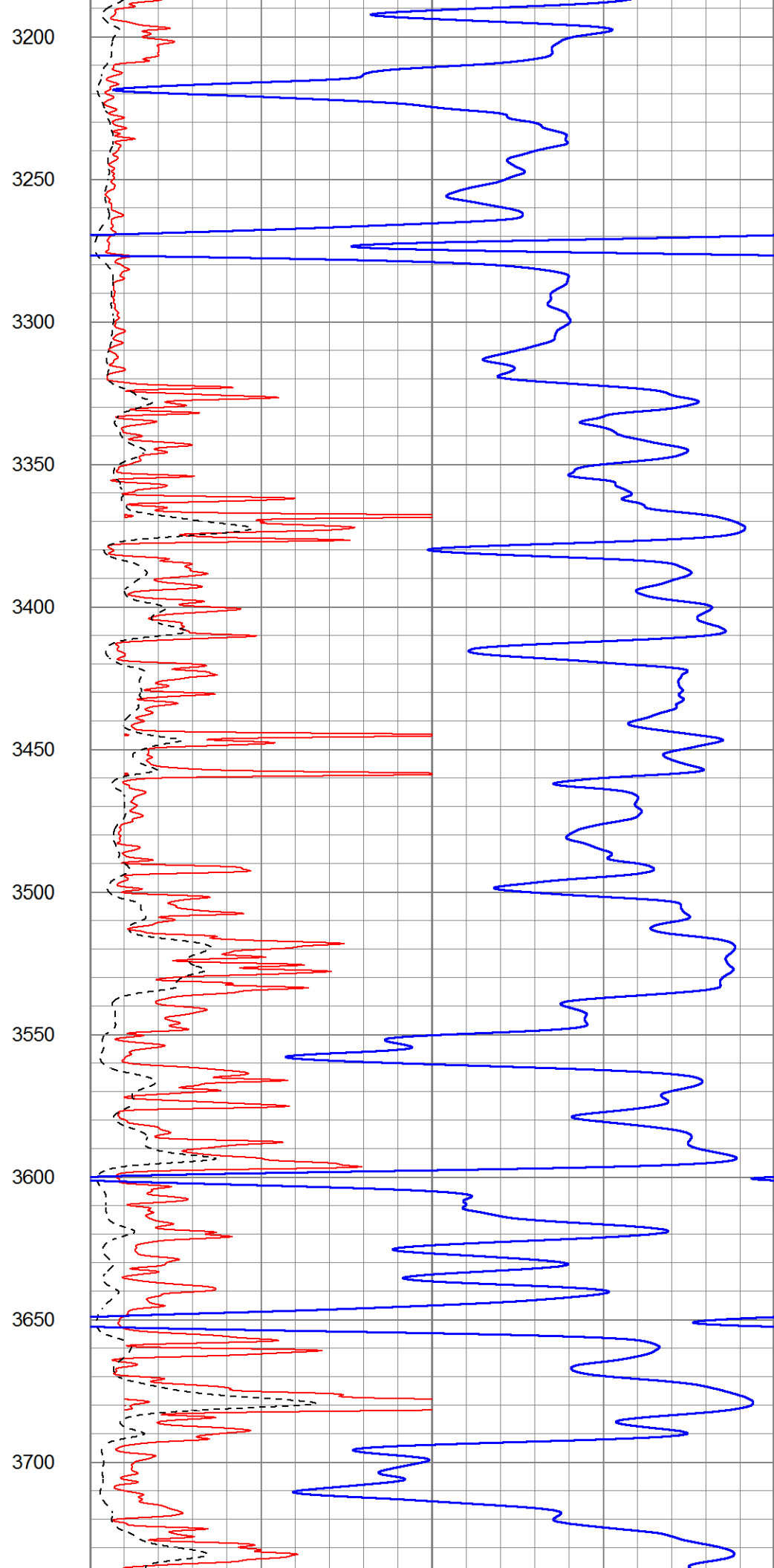
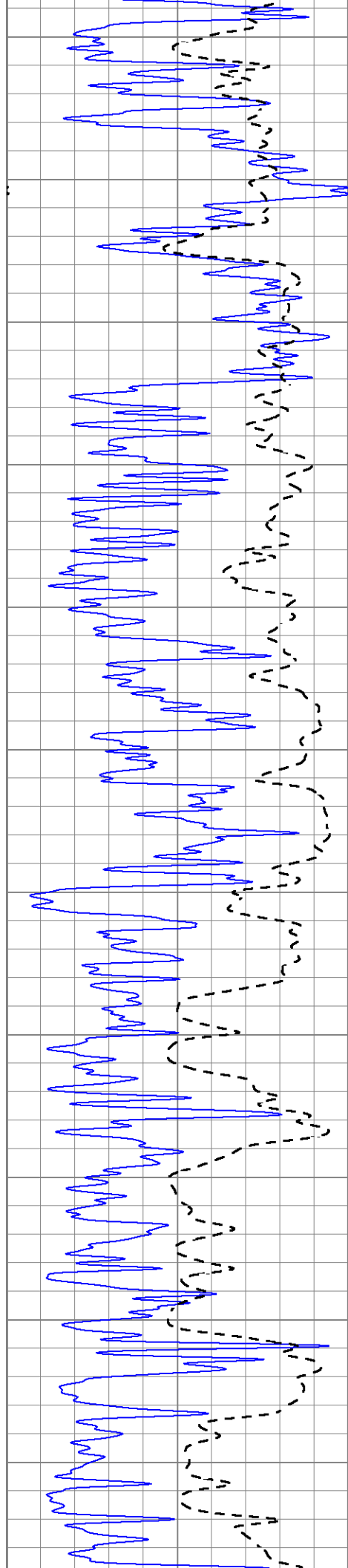


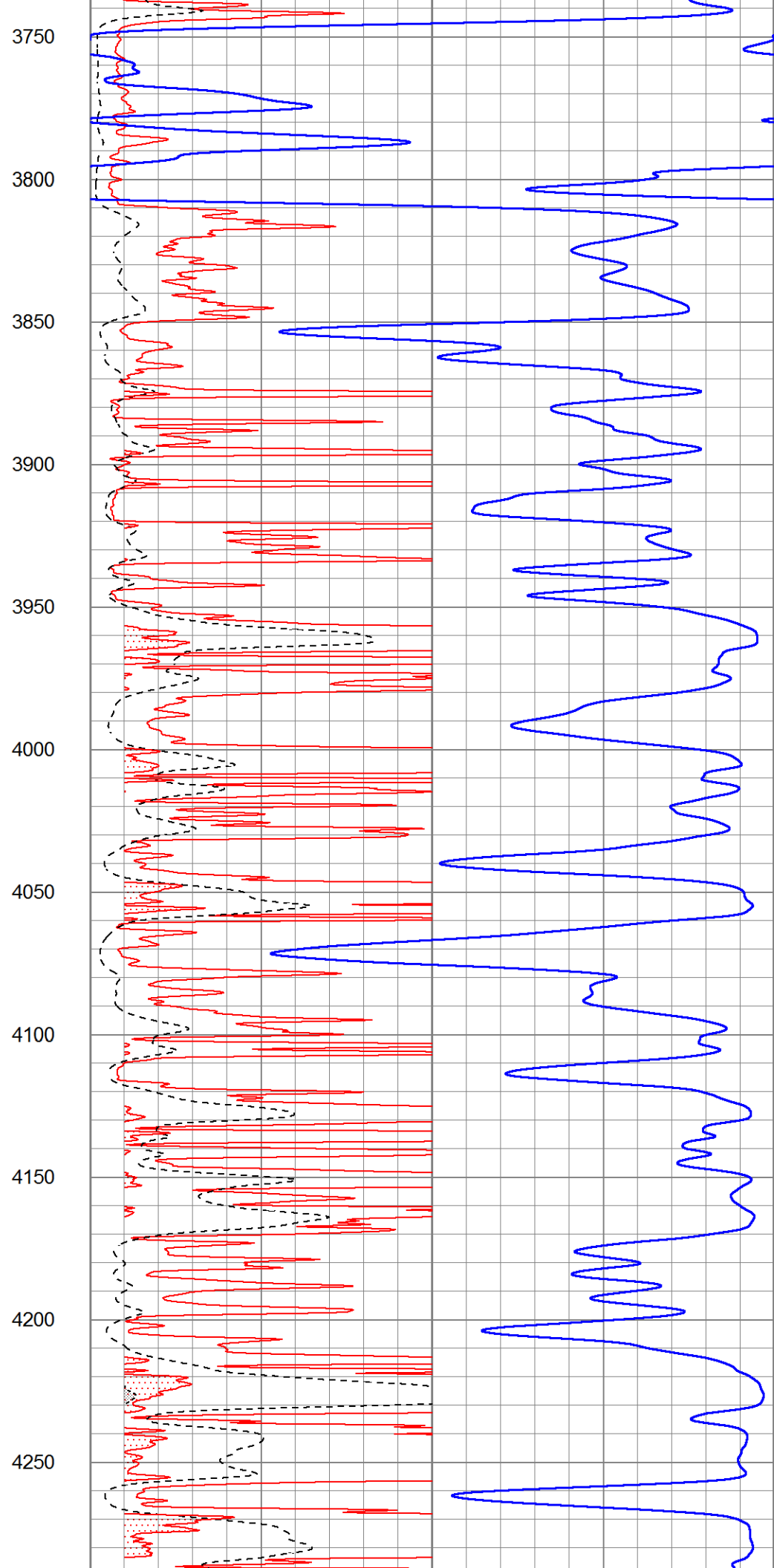
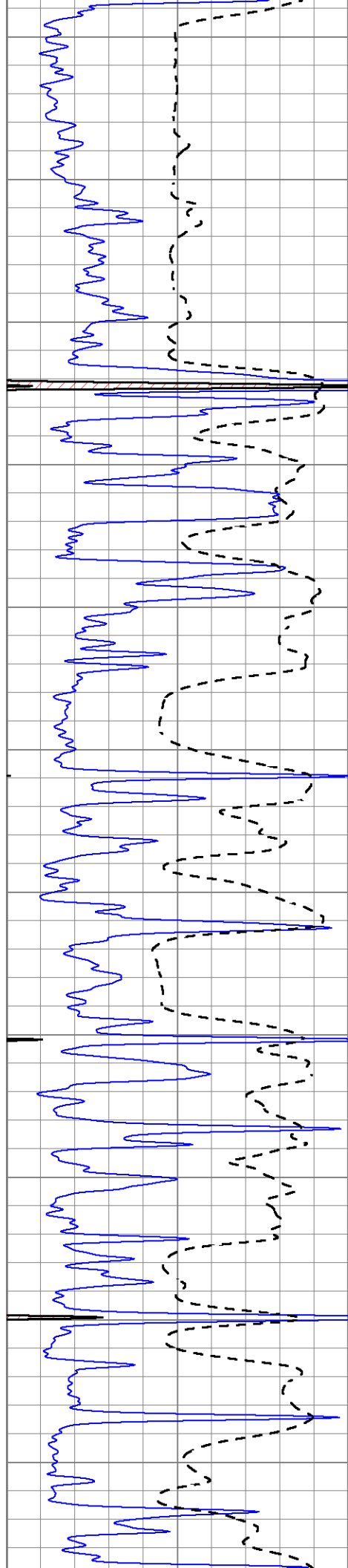


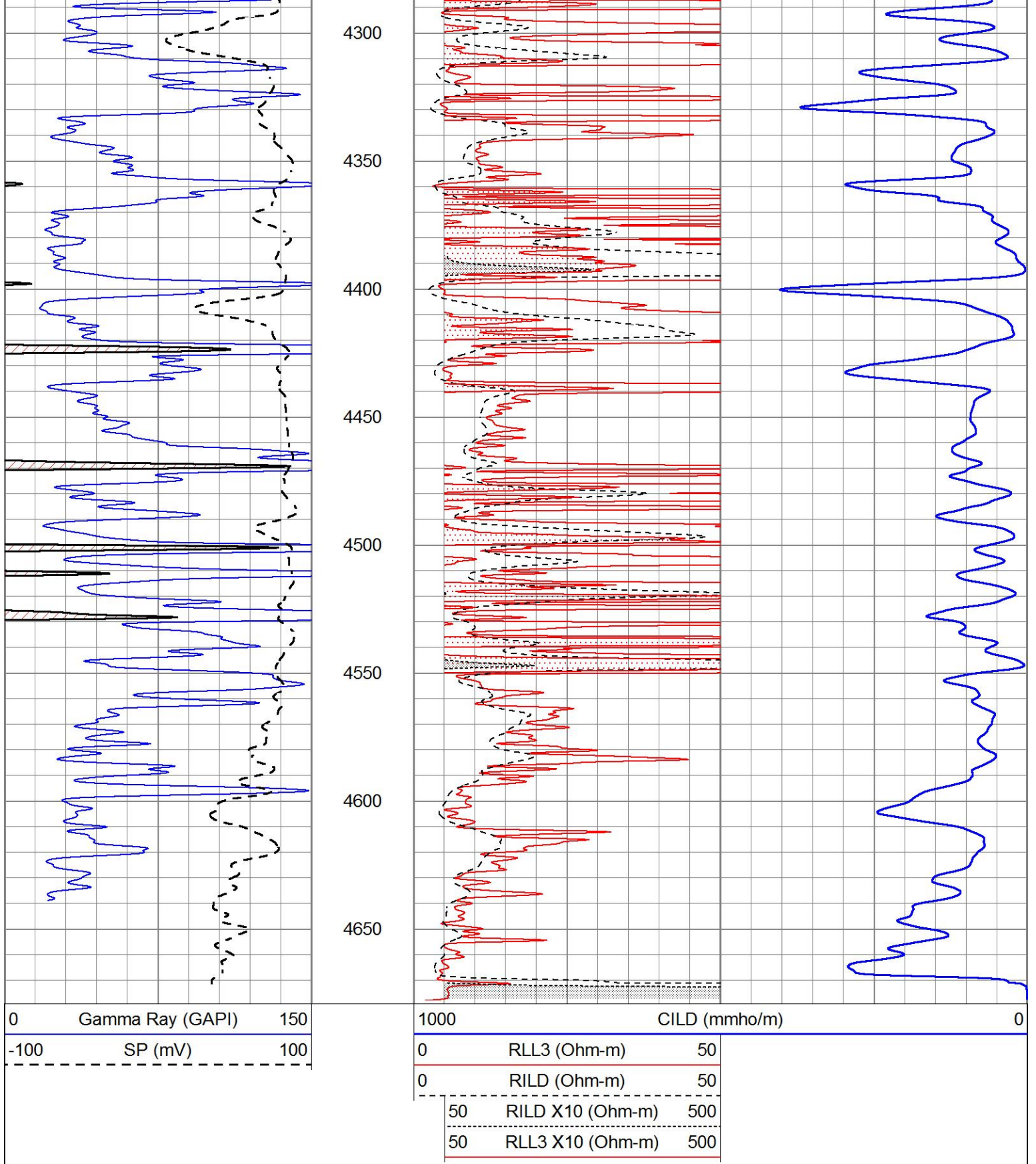










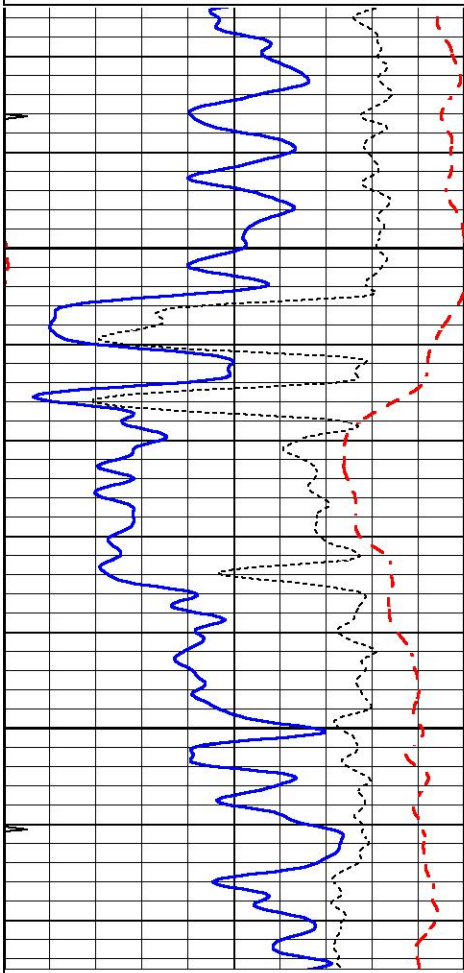


ANHYDRITE

Database File 7504pe.db
 Dataset Pathname pass3.1A
 Presentation Format _dil
 Dataset Creation Thu Feb 09 10:57:10 2023

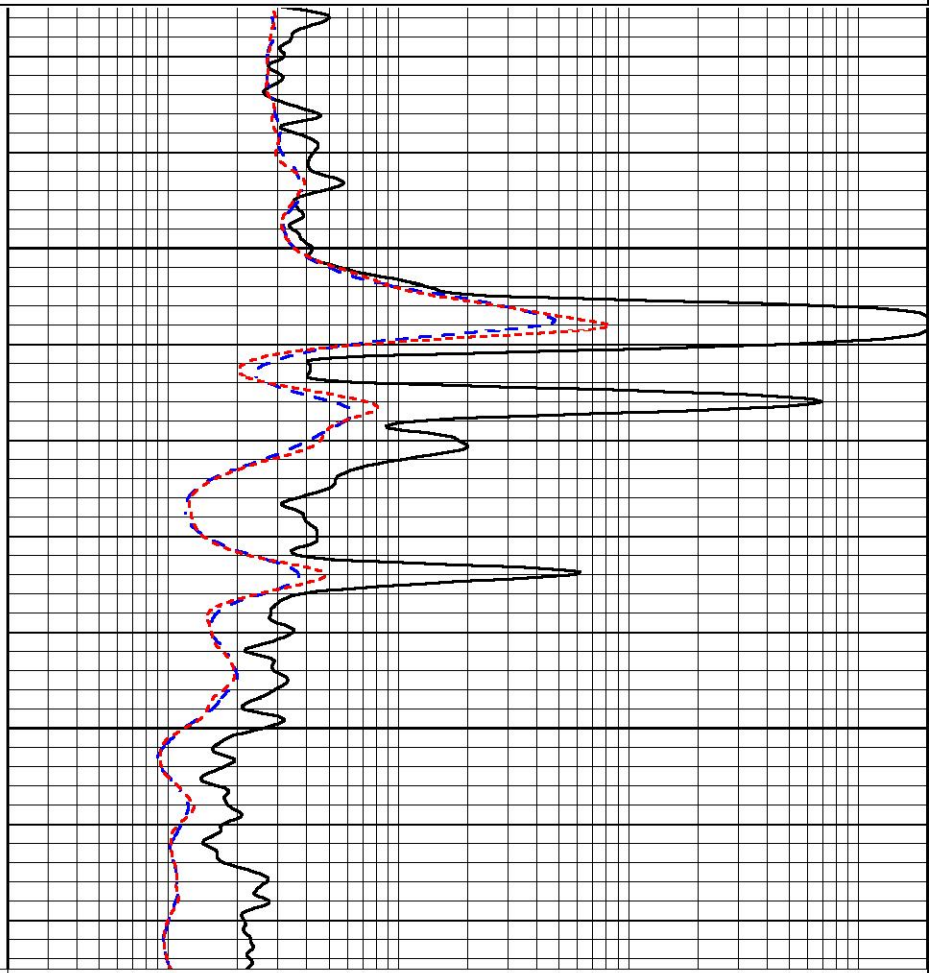
0	GAMMA RAY (GAPI)	150
-100	SP (mV)	100
-250	Rxo/Rt	50
0	MINMK	20

0.2	SHALLOW GUARD (Ohm-m)	2000
0.2	DEEP INDUCTION (Ohm-m)	2000
0.2	MEDIUM INDUCTION (Ohm-m)	2000



1550

1600



0	GAMMA RAY (GAPI)	150
-100	SP (mV)	100
-250	Rxo/Rt	50
0	MINMK	20

0.2	SHALLOW GUARD (Ohm-m)	2000
0.2	DEEP INDUCTION (Ohm-m)	2000
0.2	MEDIUM INDUCTION (Ohm-m)	2000

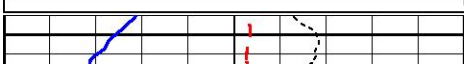


MAIN SECTION

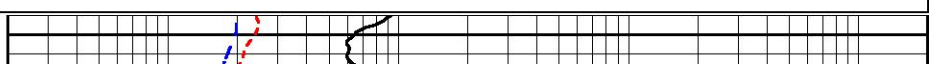
Database File 7504pe.db
 Dataset Pathname pass3.1M
 Presentation Format _dil
 Dataset Creation Thu Feb 09 10:56:34 2023
 Charted by Depth in Feet scaled 1:240

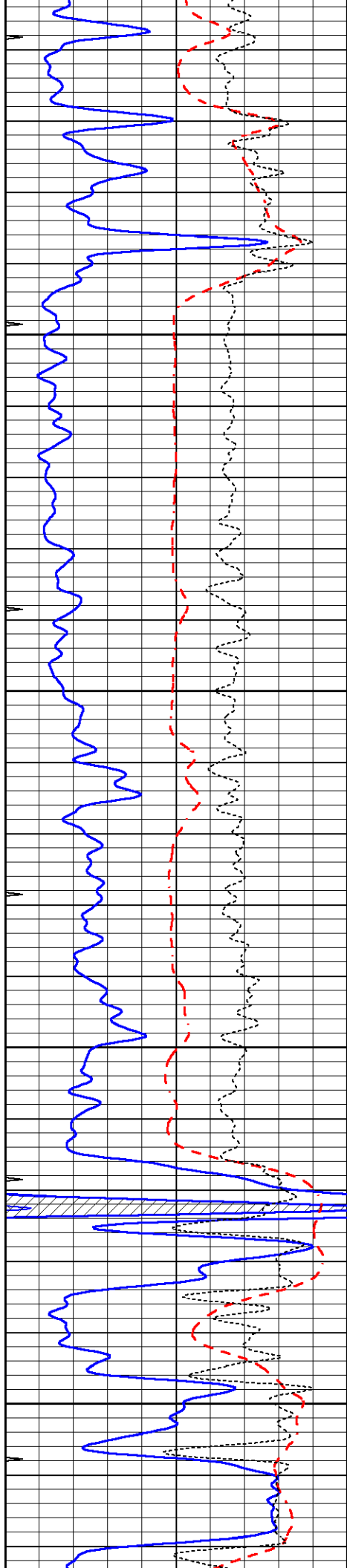
0	GAMMA RAY (GAPI)	150
-100	SP (mV)	100
-250	Rxo/Rt	50
0	MINMK	20

0.2	SHALLOW GUARD (Ohm-m)	2000
0.2	DEEP INDUCTION (Ohm-m)	2000
0.2	MEDIUM INDUCTION (Ohm-m)	2000



3700



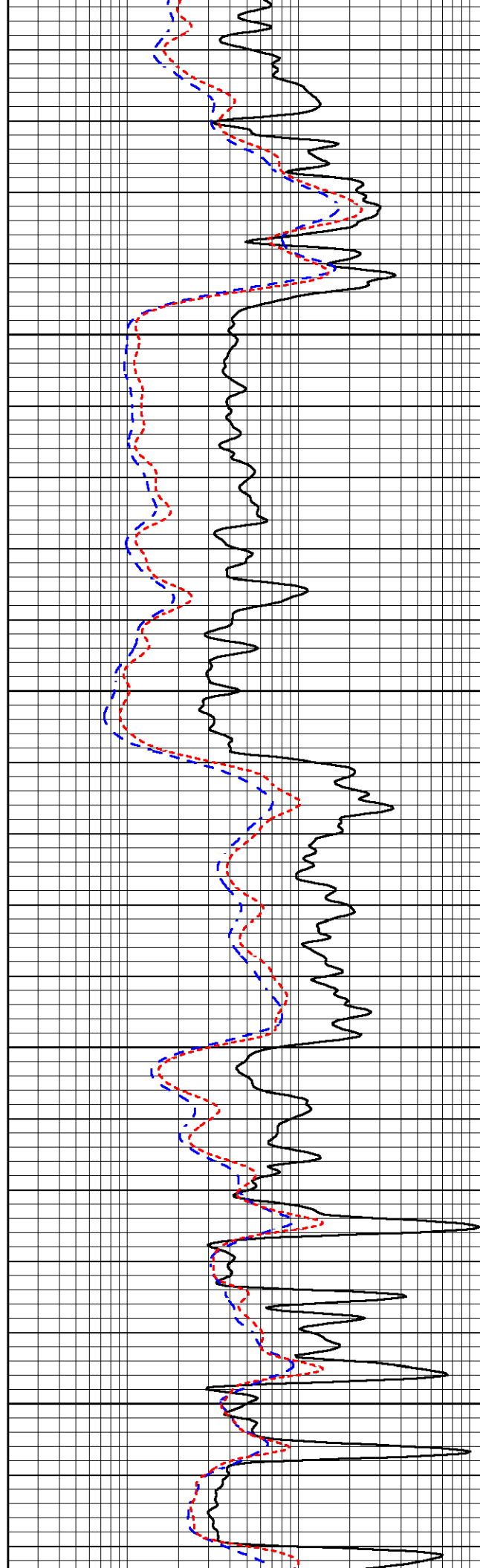


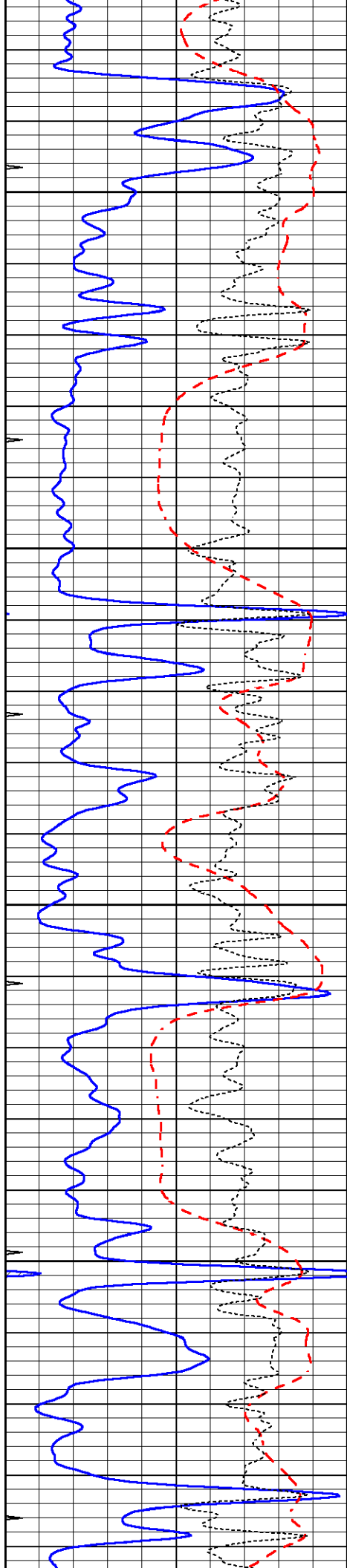
3750

3800

3850

3900



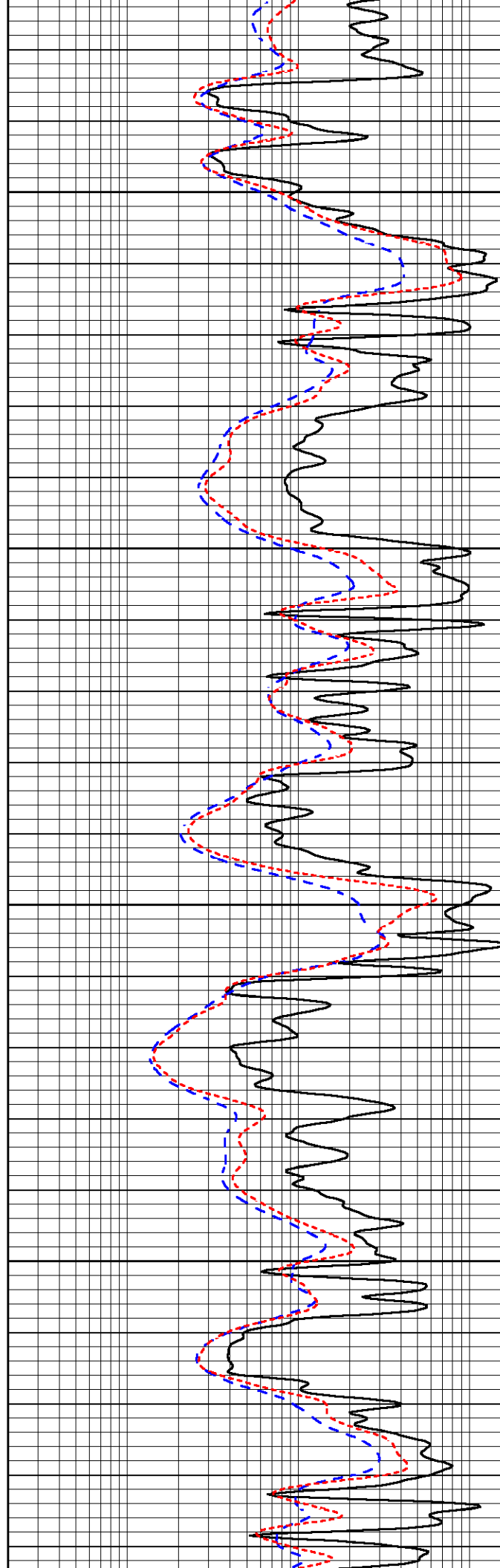


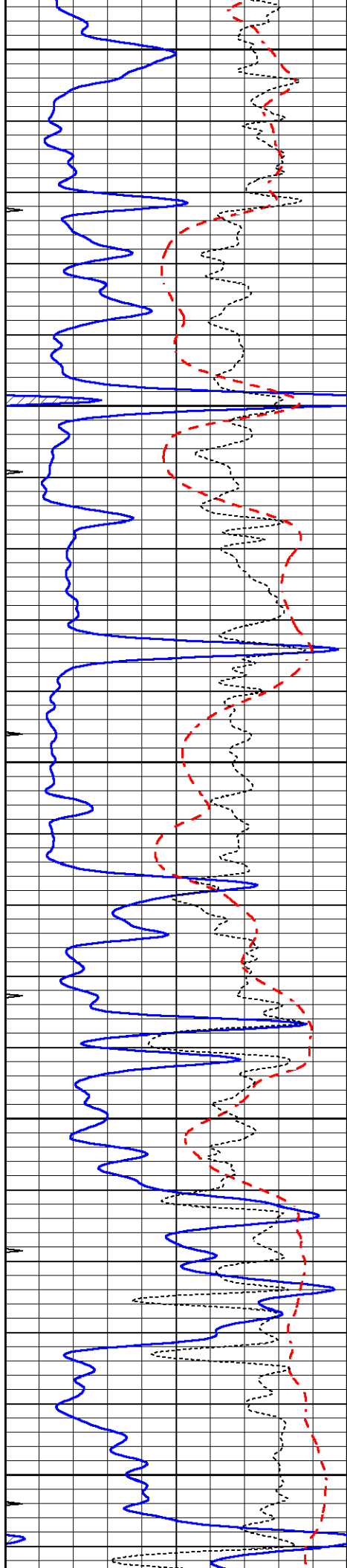
3950

4000

4050

4100





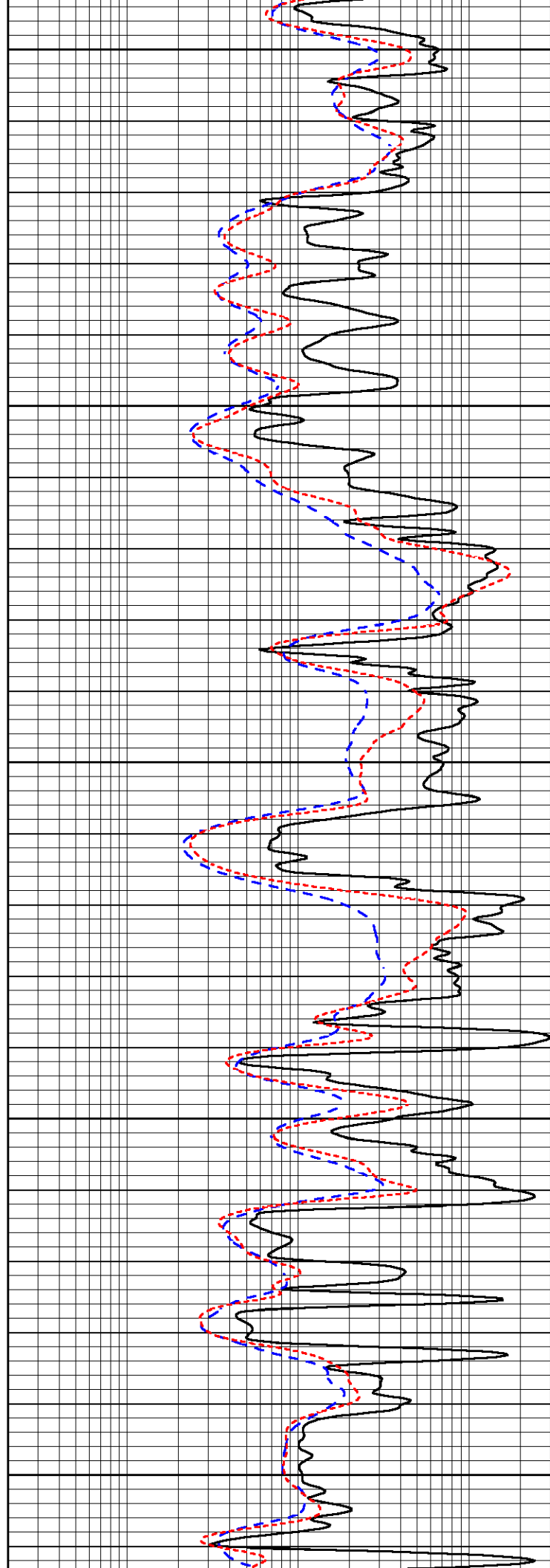
4150

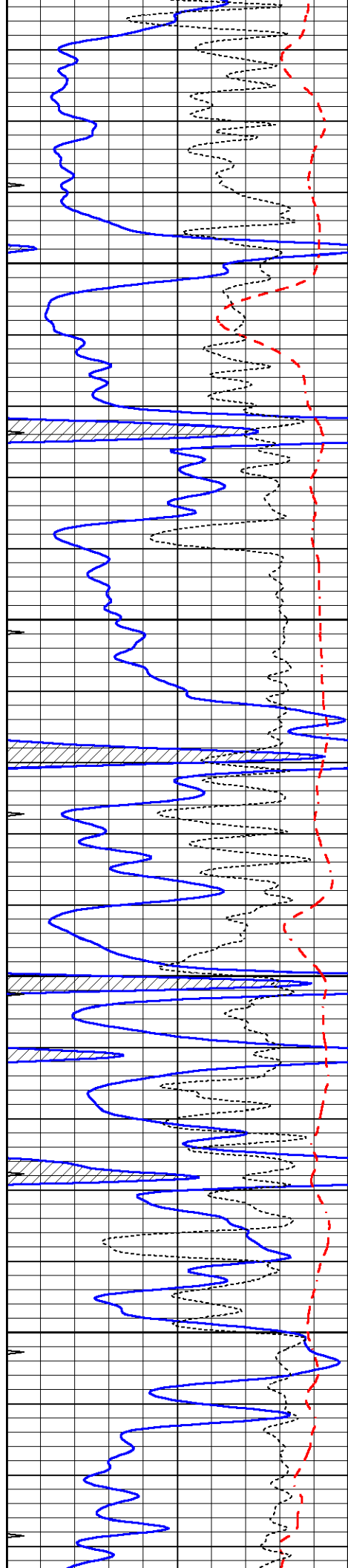
4200

4250

4300

4350



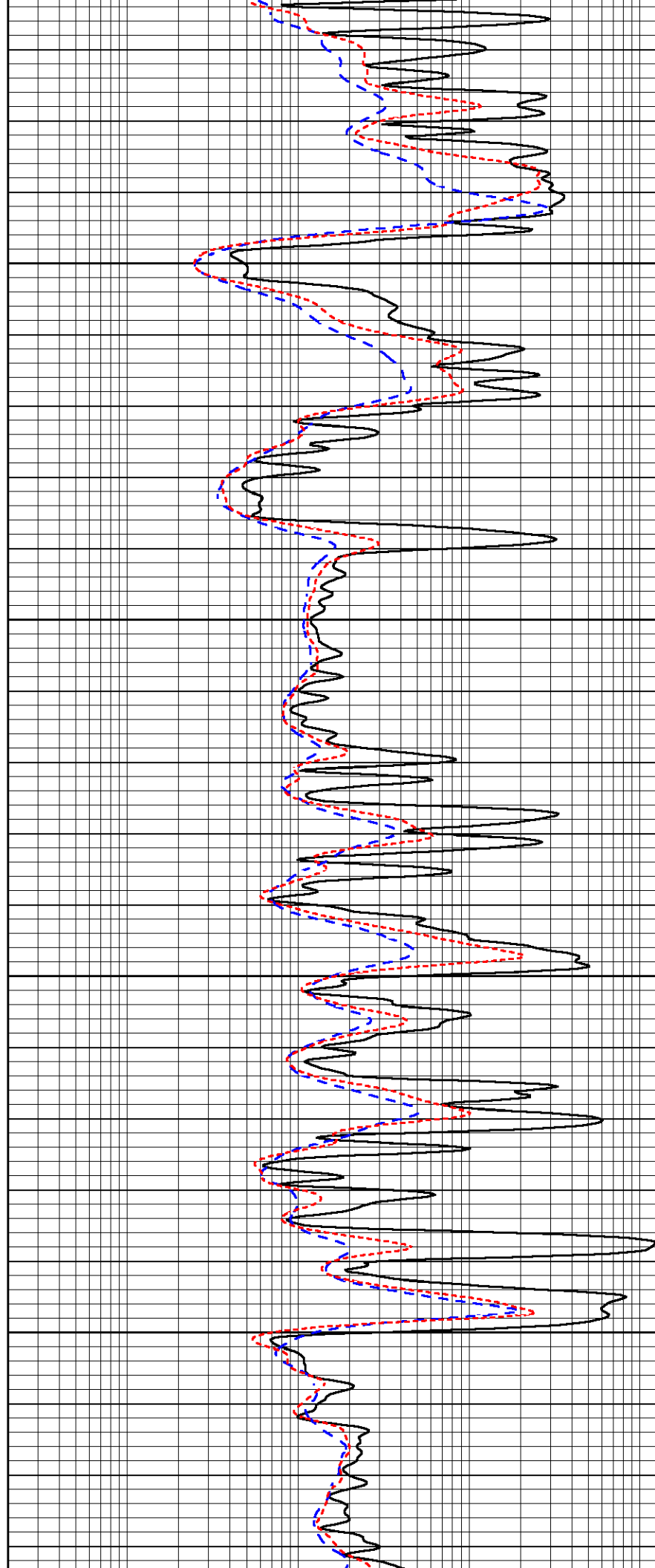


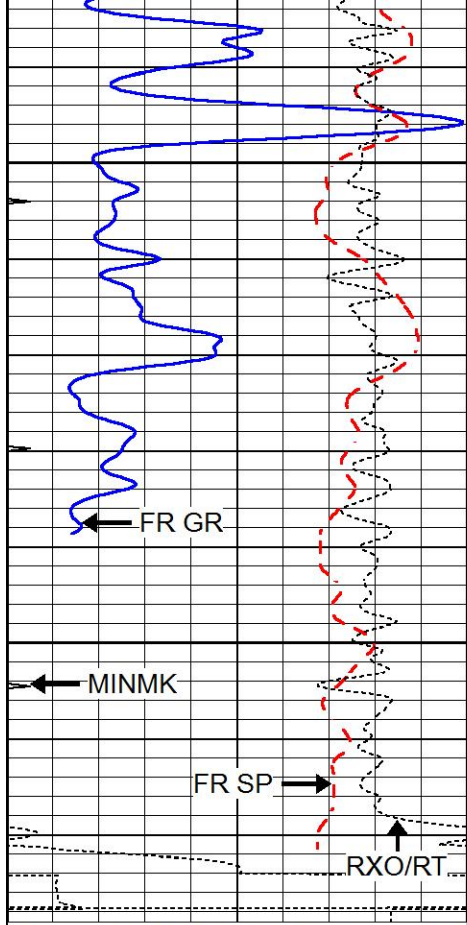
4400

4450

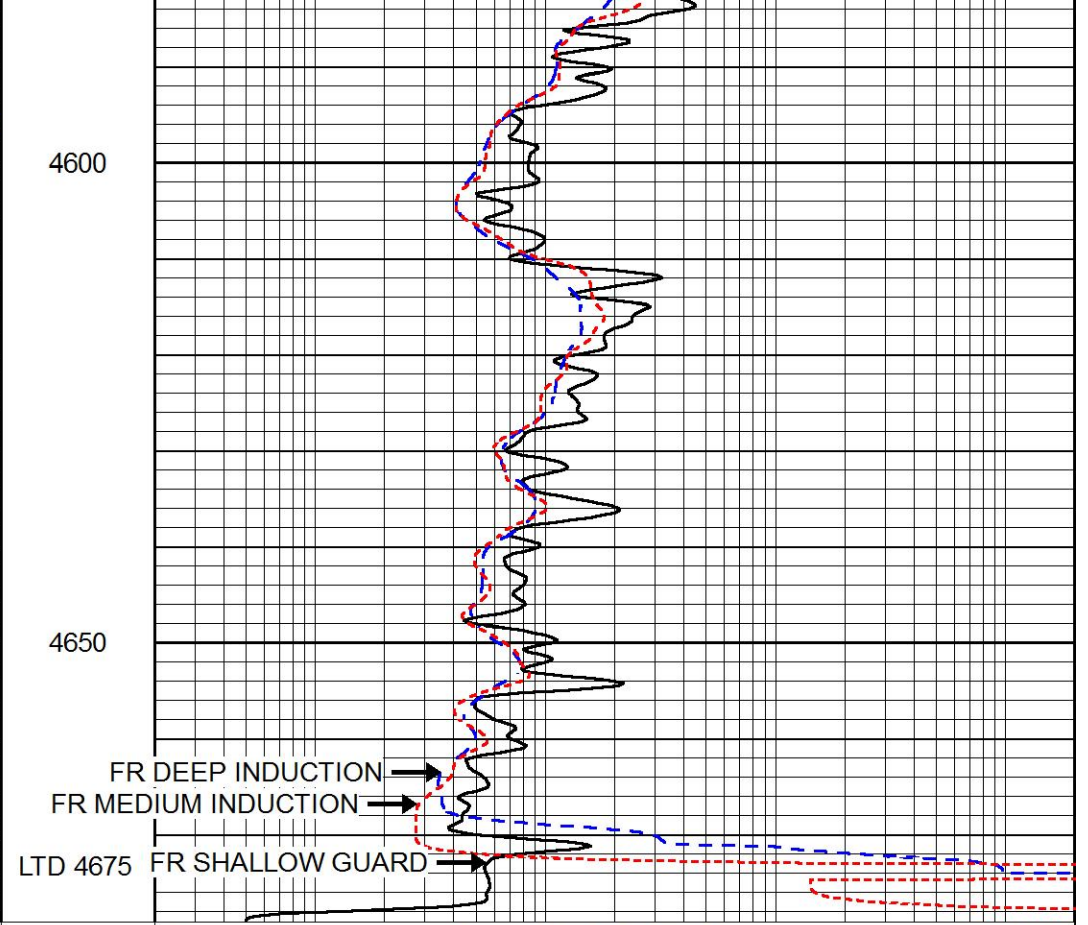
4500

4550





0	GAMMA RAY (GAPI)	150
-100	SP (mV)	100
-250	Rxo/Rt	50
0	MINMK	20



0.2	SHALLOW GUARD (Ohm-m)	2000
0.2	DEEP INDUCTION (Ohm-m)	2000
0.2	MEDIUM INDUCTION (Ohm-m)	2000

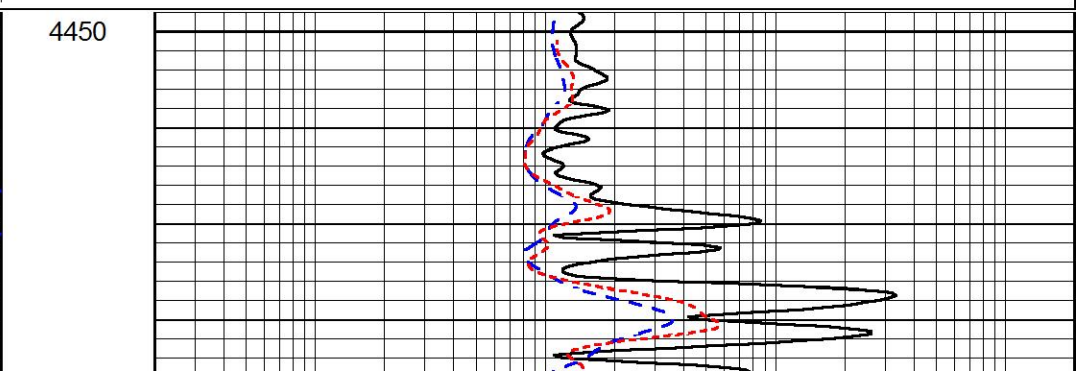
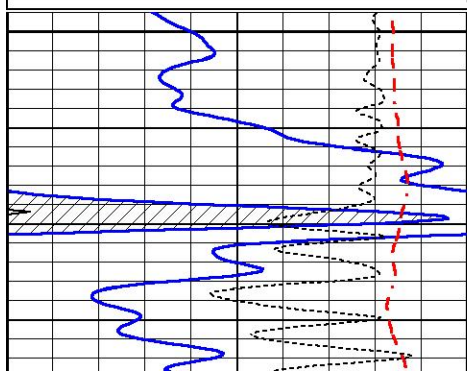


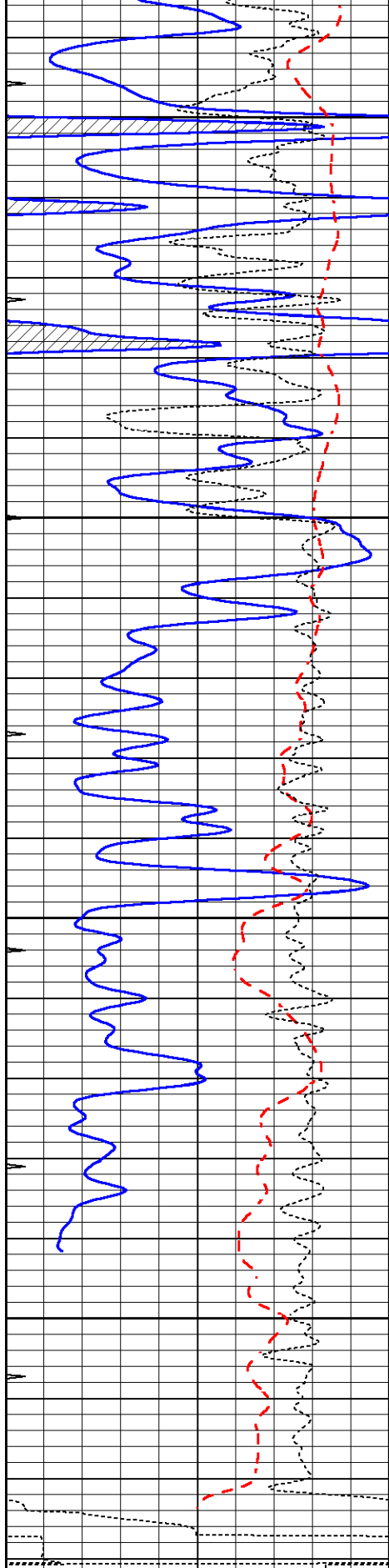
REPEAT SECTION

Database File 7504pe.db
 Dataset Pathname pass2.1R
 Presentation Format _dil
 Dataset Creation Thu Feb 09 10:20:29 2023
 Charted by Depth in Feet scaled 1:240

0	GAMMA RAY (GAPI)	150
-100	SP (mV)	100
-250	Rxo/Rt	50
0	MINMK	20

0.2	SHALLOW GUARD (Ohm-m)	2000
0.2	DEEP INDUCTION (Ohm-m)	2000
0.2	MEDIUM INDUCTION (Ohm-m)	2000





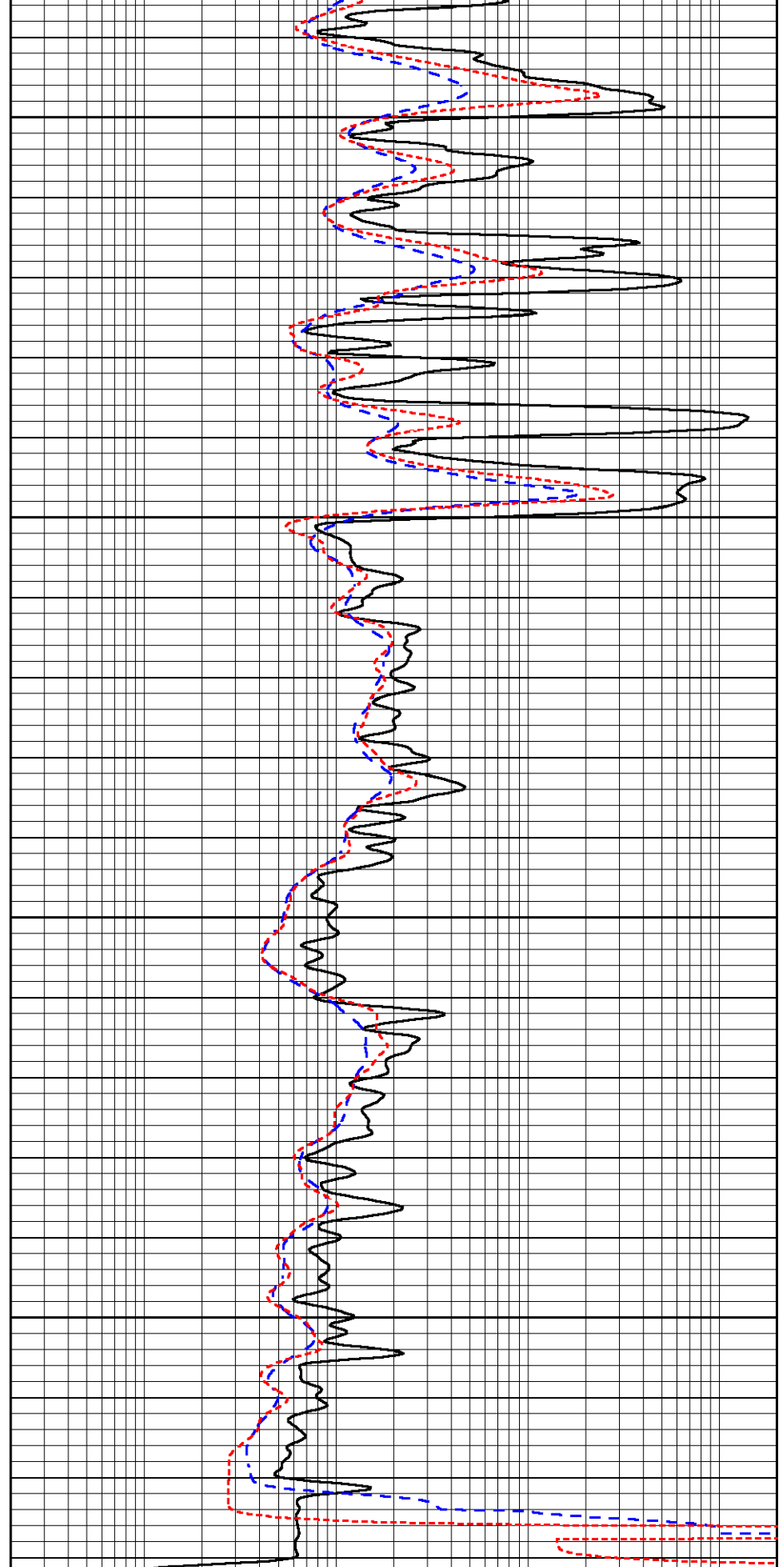
4500

4550

4600

4650

0	GAMMA RAY (GAPI)	150
-100	SP (mV)	100
-250	Rxo/Rt	50
0	MINMK	20



0.2	SHALLOW GUARD (Ohm-m)	2000
0.2	DEEP INDUCTION (Ohm-m)	2000
0.2	MEDIUM INDUCTION (Ohm-m)	2000

Calibration Report

Database File 7504pe.db
 Dataset Pathname pass3.1M
 Dataset Creation Thu Feb 09 10:56:34 2023

Dual Induction Calibration Report

Serial-Model: DIL7-GEAR
 Surface Cal Performed: Thu Feb 09 10:15:05 2023
 Downhole Cal Performed: Tue Jul 22 10:15:08 2008
 After Survey Verification Performed: Wed Jan 18 02:07:20 2023

Surface Calibration

Loop:	Readings			References			Results	
	Air	Loop	V	Air	Loop		m	b
Deep	0.019	0.660	V	0.000	400.000	mmho/m	660.000	17.000
Medium	-0.006	0.655	V	0.000	462.500	mmho/m	720.000	-31.000
Internal:	Zero	Cal		Zero	Cal		m	b
Deep	0.010	0.665	V	0.000	400.000	mmho/m	610.018	-5.925
Medium	0.009	0.655	V	0.000	400.000	mmho/m	618.983	-5.564

Downhole Calibration

Internal:	Readings			References			Results	
	Zero	Cal		Zero	Cal		m	b
Deep	0.000	0.000	mmho/m	-6.200	401.333	mmho/m	1.000	0.000
Medium	0.000	0.000	mmho/m	-1.141	472.660	mmho/m	1.000	0.000
Shallow	2.521	0.019	V	500.000	2.000	Ohm-m	200.000	0.500

After Survey Verification

Internal:	Readings			Targets			Results	
	Zero	Cal		Zero	Cal		m'	b'
Deep	0.000	1.000	mmho/m	0.000	1.000	mmho/m	1.000	0.000
Medium	0.000	1.000	mmho/m	0.000	1.000	mmho/m	1.000	0.000
Shallow	2.500	0.010	Ohm-m	500.000	2.000	Ohm-m	200.000	0.000

Litho Density Calibration Report
 Serial: 004 Model: PRB

Master Calibration

Performed Fri Nov 04 15:19:59 2022

	Background	Magnesium	Aluminum	Aluminum+Fe	
Window 1	1153.2	7232.1	2536.8	2279.5	cps
Window 2	1055.6	6225.5	2222.3	2030.5	cps
Window 3	902.5	3849.3	1546.4	1462.0	cps
Window 4	254.4	258.2	253.1	253.9	cps
Long Space	0.0	5169.9	1166.7	974.9	cps
Short Space	4.7	1383.0	950.5	792.1	cps
Rho		1.7100	2.5900	0.0000	g/cc
Pe		2.0000	2.7500	5.7900	
Rib Angle	: 45.9	Rib Slope	: 1.031	Density/Spine Ratio	: 0.573
Spine Angle	: 75.9	Spine Slope	: 3.970	Spine Intercept	: -20.2

Before Survey Verification

Performed Wed Dec 31 18:00:00 1969

Window 1	0.0	0.0	0.0	0.0	cps
Window 2	0.0	0.0	0.0	0.0	cps
Window 3	0.0	0.0	0.0	0.0	cps
Window 4	0.0	0.0	0.0	0.0	cps
Long Space	0.0	0.0	0.0	0.0	cps
Short Space	0.0	0.0	0.0	0.0	cps
Measured Rho		0.0000	0.0000	0.0000	g/cc
Measured Correction		0.0000	0.0000	0.0000	g/cc
Measured Pe			0.0000	0.0000	

After Survey Verification

Performed Wed Dec 31 18:00:00 1969

Window 1	0.0	0.0	0.0	0.0	cps
Window 2	0.0	0.0	0.0	0.0	cps
Window 3	0.0	0.0	0.0	0.0	cps
Window 4	0.0	0.0	0.0	0.0	cps
Long Space	0.0	0.0	0.0	0.0	cps
Short Space	0.0	0.0	0.0	0.0	cps
Measured Rho		0.0000	0.0000	0.0000	g/cc
Measured Correction		0.0000	0.0000	0.0000	g/cc
Measured Pe			0.0000	0.0000	

Compensated Neutron Calibration Report

Serial Number: 6I
Tool Model: G

CALIBRATION

Detector	Readings	Target	Normalization
Short Space	1.00 cps	1.00 cps	1.0000
Long Space	1.00 cps	1.00 cps	1.0000

PRE-SURVEY VERIFICATION

	Detector	Readings	Measured	Target
1)	Short Space	cps		
	Long Space	cps	pu	pu
2)	Short Space	cps		
	Long Space	cps	pu	
3)	Short Space	cps		
	Long Space	cps	pu	

POST-SURVEY VERIFICATION

	Detector	Readings	Measured	Target
1)	Short Space	cps		
	Long Space	cps	pu	pu
2)	Short Space	cps		
	Long Space	cps	pu	pu
3)	Short Space	cps		
	Long Space	cps	pu	pu

Serial Number:	GR6
Tool Model:	OPEN
Performed:	Wed Jan 25 05:13:23 2023

Calibrator Value:	150.0	GAPI
-------------------	-------	------

Background Reading:	0.0	cps
Calibrator Reading:	276.0	cps

Sensitivity:	0.9000	GAPI/cps
--------------	--------	----------