

SONIC LOG



Company AMERICAN WARRIOR, INC.
 Well SHRIMISE - FORD UNIT #1-35
 Field WILDCAT
 County HODGEMAN State KANSAS

Company AMERICAN WARRIOR, INC.
 Well SHRIMISE - FORD UNIT #1-35
 Field WILDCAT
 County HODGEMAN
 State KANSAS

Location: API #: 15-083-22025-0000
 986' FSL & 1818' FEL
 NE - NE - NW - NE
 SEC 35 TWP 22S RGE 24W
 Permanent Datum GROUND LEVEL Elevation 2331
 Log Measured From KELLY BUSHING 8' A.G.L.
 Drilling Measured From KELLY BUSHING
 Other Services CDL/CNL/PE DIL/MEL
 Elevation K.B. 2339 D.F. 2337 G.L. 2331

Date	2/9/23	
Run Number	TWO	
Depth Driller	4680	
Depth Logger	4675	
Bottom Logged Interval	4667	
Top Log Interval	200	
Casing Driller	8 5/8"@221'	
Casing Logger	221	
Bit Size	7 7/8"	
Type Fluid in Hole	CHEMICAL MUD	CHLORIDES: 4,700 PPM
Density / Viscosity	9.4/50	
pH / Fluid Loss	10.5/7.6	
Source of Sample	FLOWLINE	
Rm @ Meas. Temp	1.00@60F	
Rmf @ Meas. Temp	.750@60F	
Rmc @ Meas. Temp	1.20@60F	
Source of Rmf / Rmc	MEASUREMENT	
Rm @ BHT	.492@122F	
Time Circulation Stopped	3.5 HOURS	
Time Logger on Bottom	11:00 A.M.	
Maximum Recorded Temperature	122F	
Equipment Number	8916	
Location	HAYS, KANSAS	
Recorded By	JEFF LUEBBERS	
Witnessed By	JASON T. ALM	

<<< Fold Here >>>

All interpretations are opinions based on inferences from electrical or other measurements and we cannot and do not guarantee the accuracy or correctness of any interpretation, and we shall not, except in the case of gross or willful negligence on our part, be liable or responsible for any loss, costs, damages, or expenses incurred or sustained by anyone resulting from any interpretation made by any of our officers, agents or employees. These interpretations are also subject to our general terms and conditions set out in our current Price Schedule.

Comments

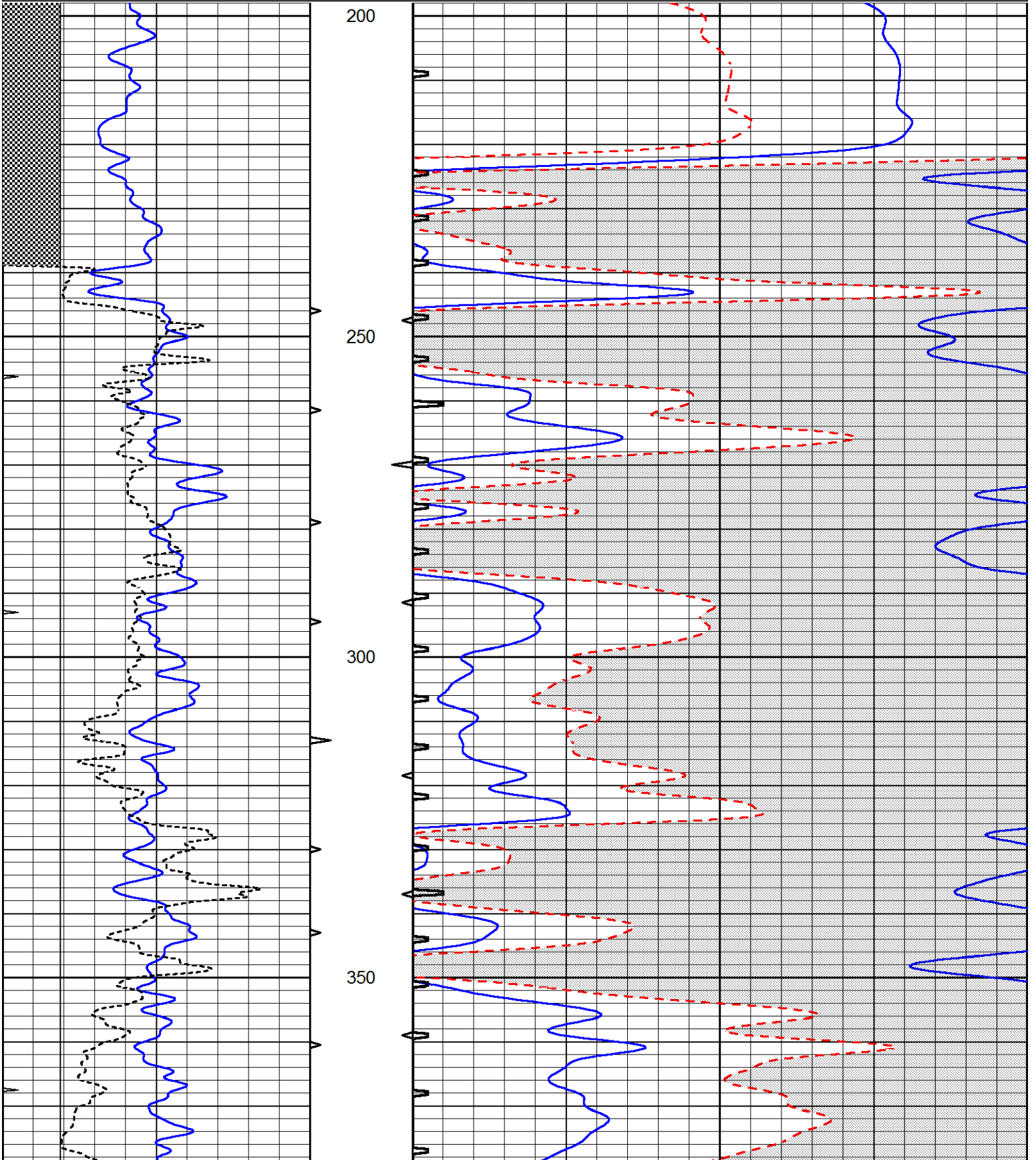
THANK YOU FOR USING ELI WIRELINE, HAYS, KS. (785) 628-6395
 DIRECTIONS:
 JETMORE, KS., 1 1/4W. ON HWY 156, 1N., W. INTO

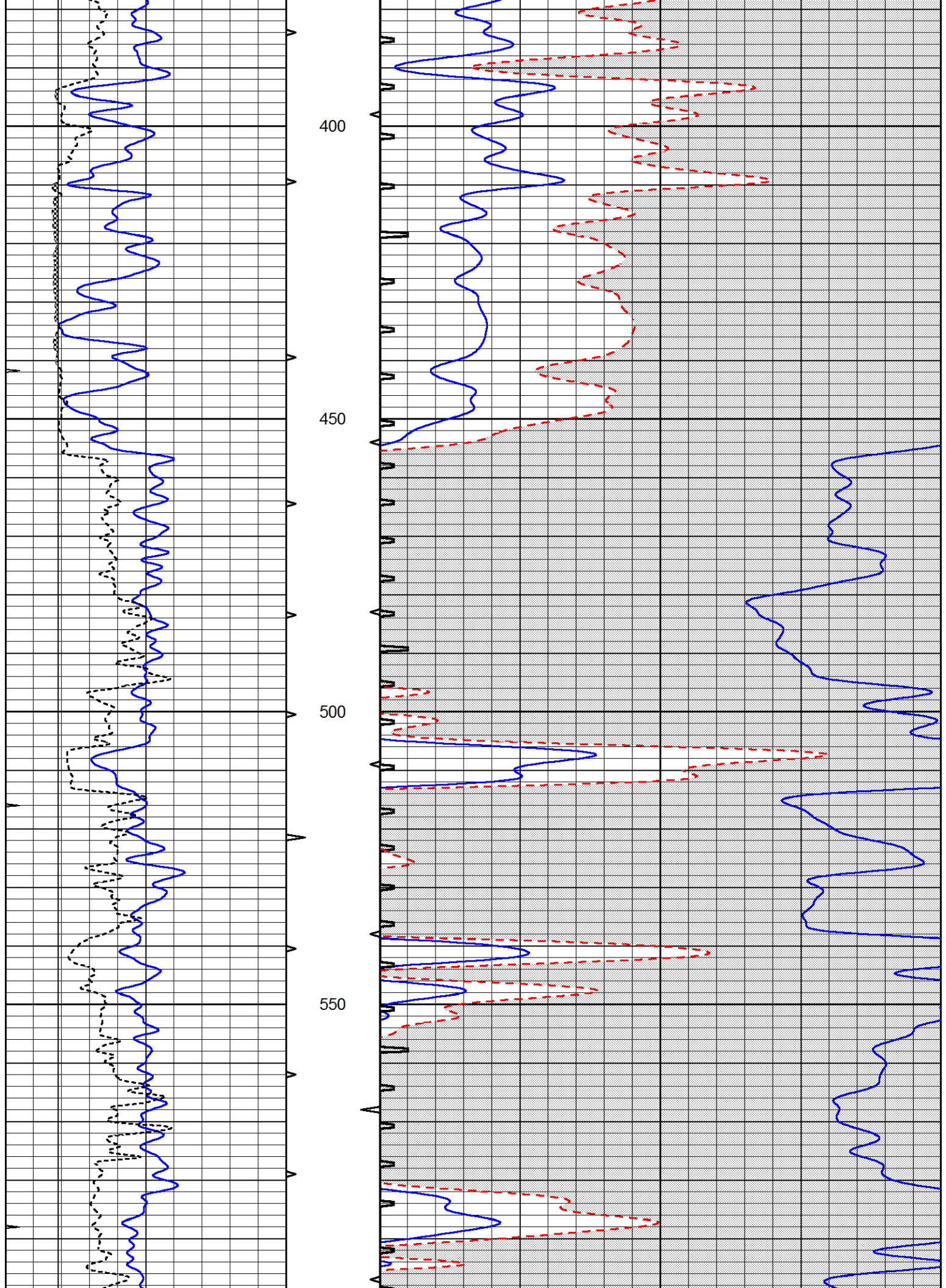


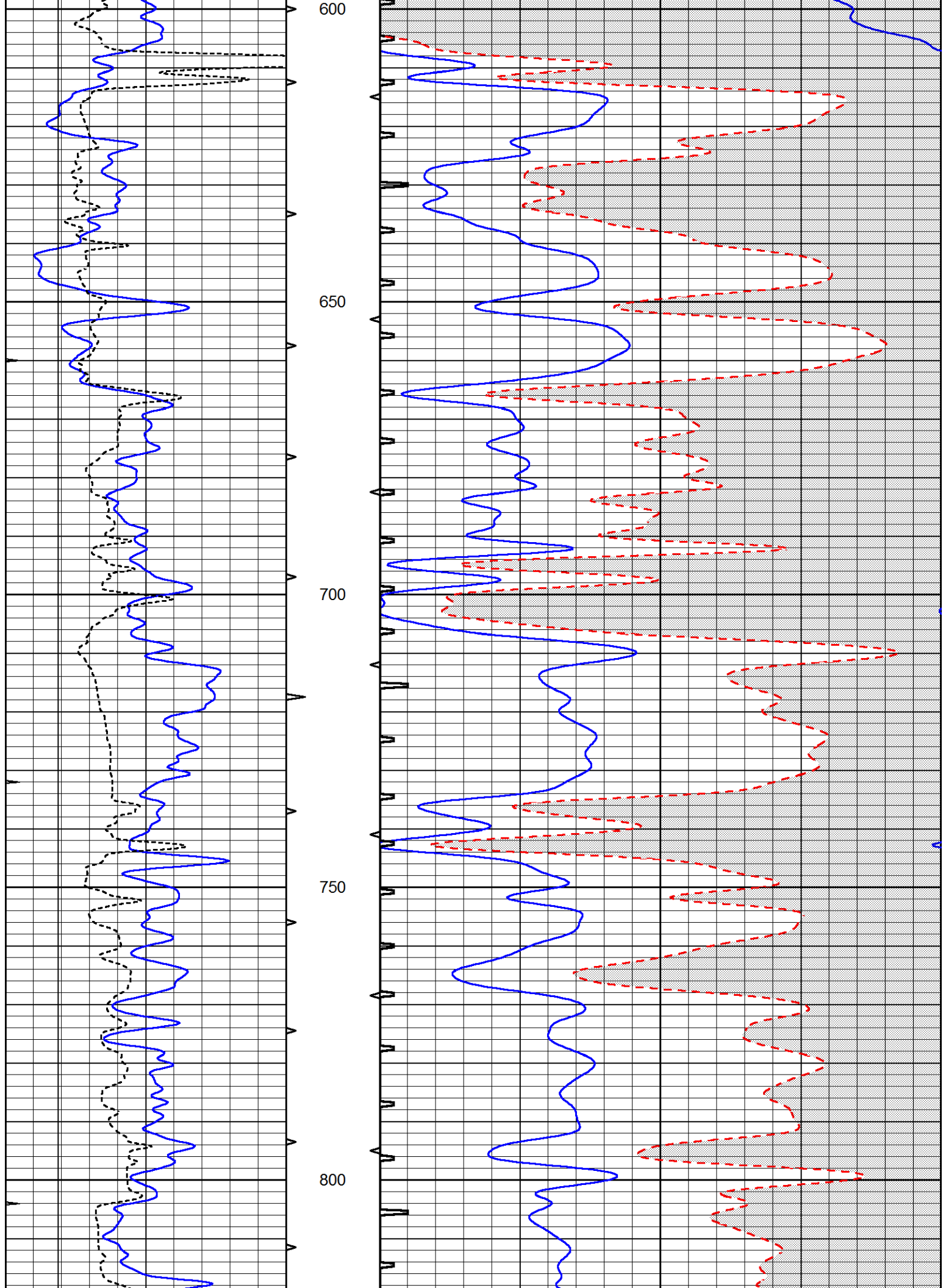
MAIN SECTION

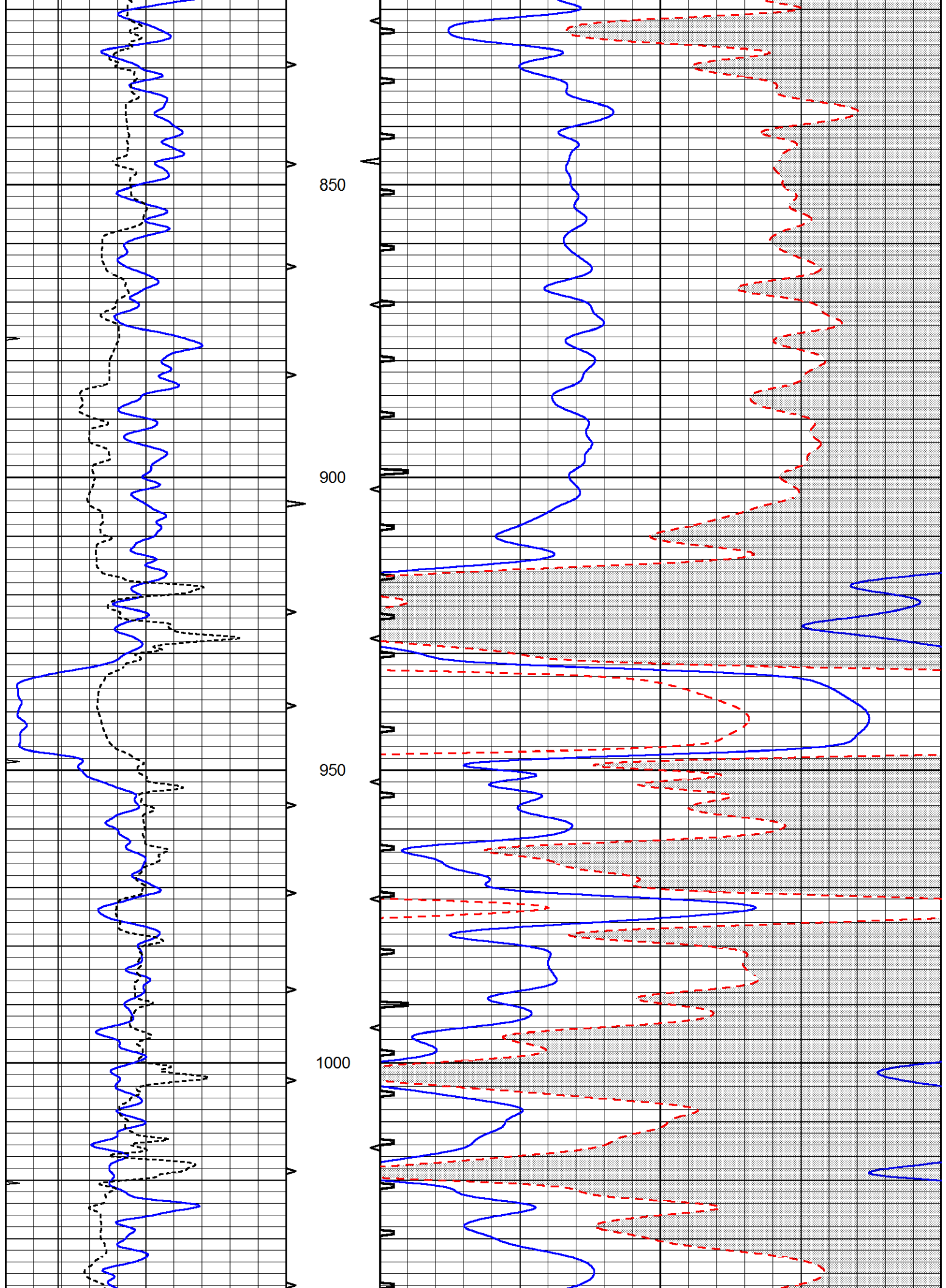
Database File 7504pe.db
 Dataset Pathname pass12.2
 Presentation Format _slt
 Dataset Creation Thu Feb 09 13:02:11 2023
 Charted by Depth in Feet scaled 1:240

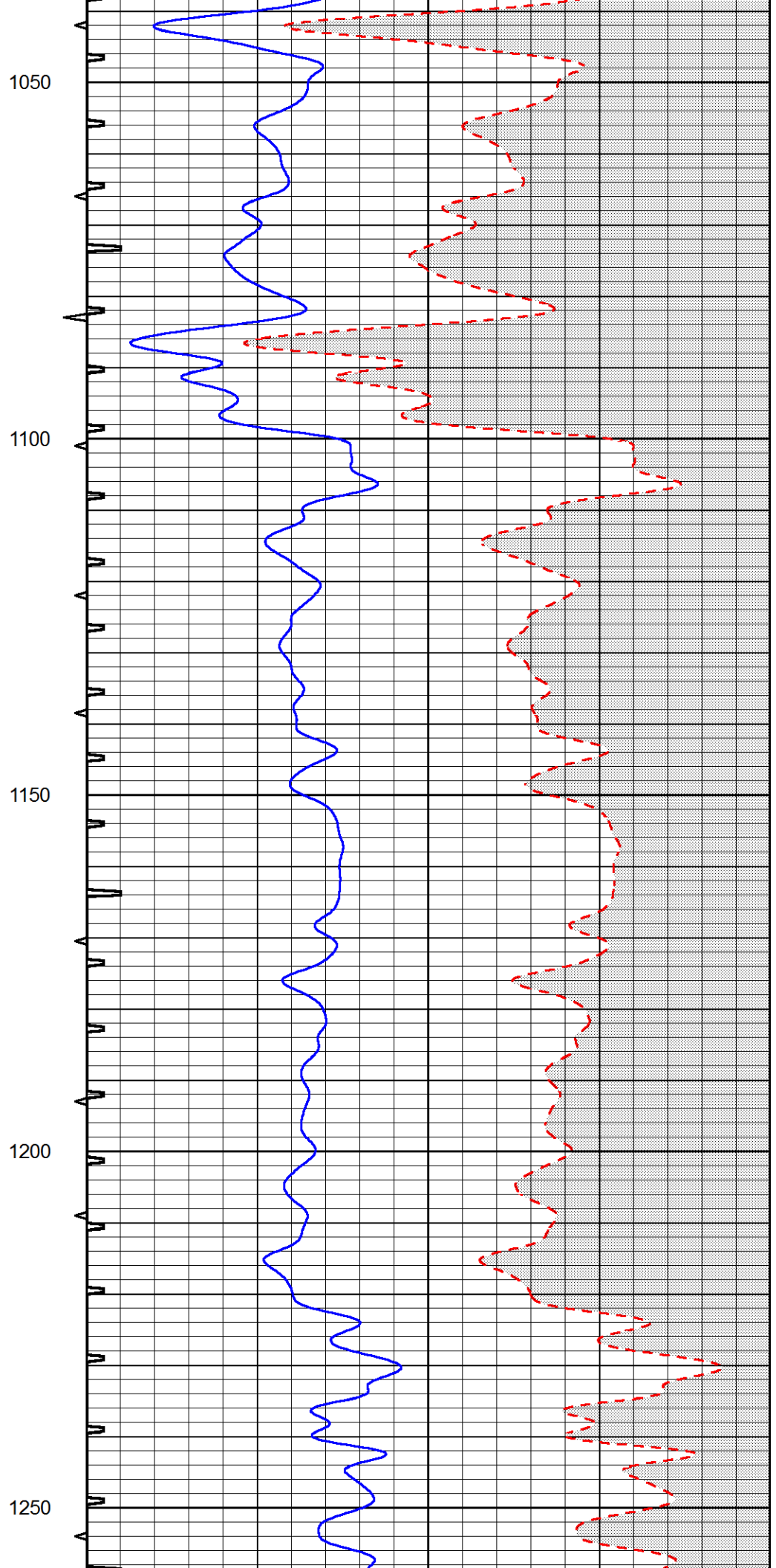
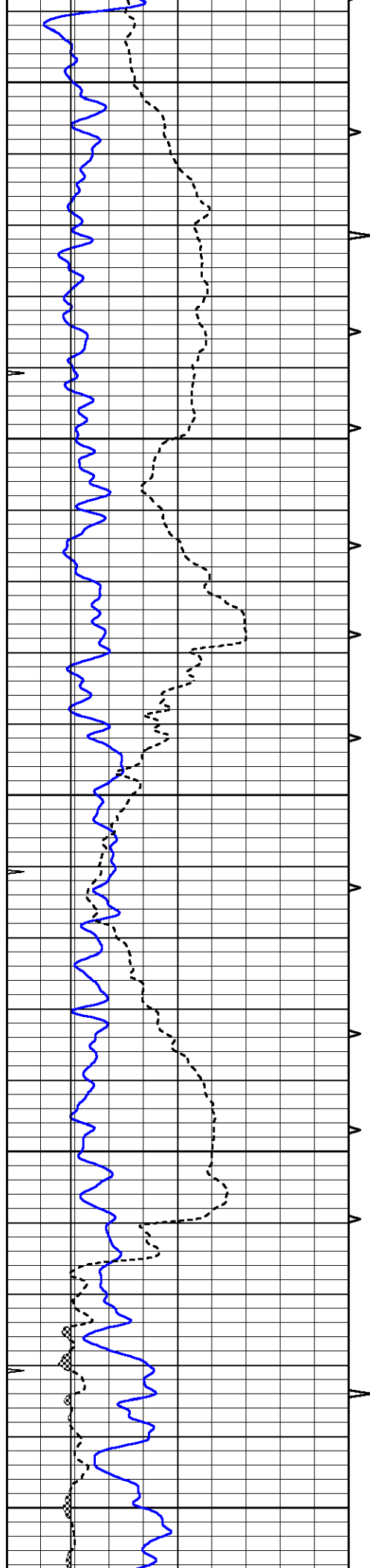
0	GAMMA RAY (GAPI)	150	ABHV	140	DELTA TIME (usec/ft)	40
0	MINMK	20	10 (ft3) 0	30	SONIC POROSITY (pu)	-10
6	MELCAL (in)	16	TBHV	0	ITT (msec)	20
			0 (ft3) 10			

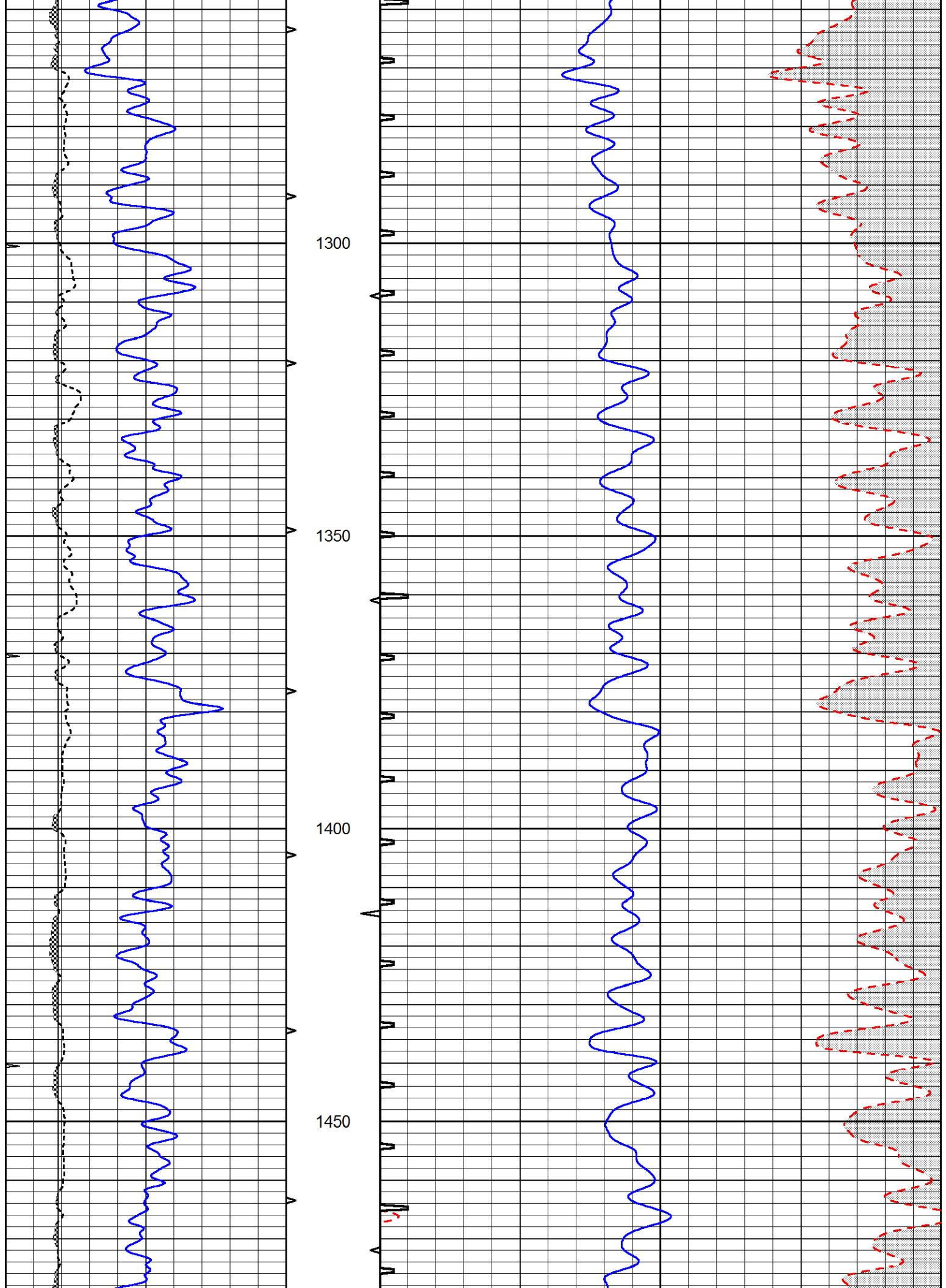


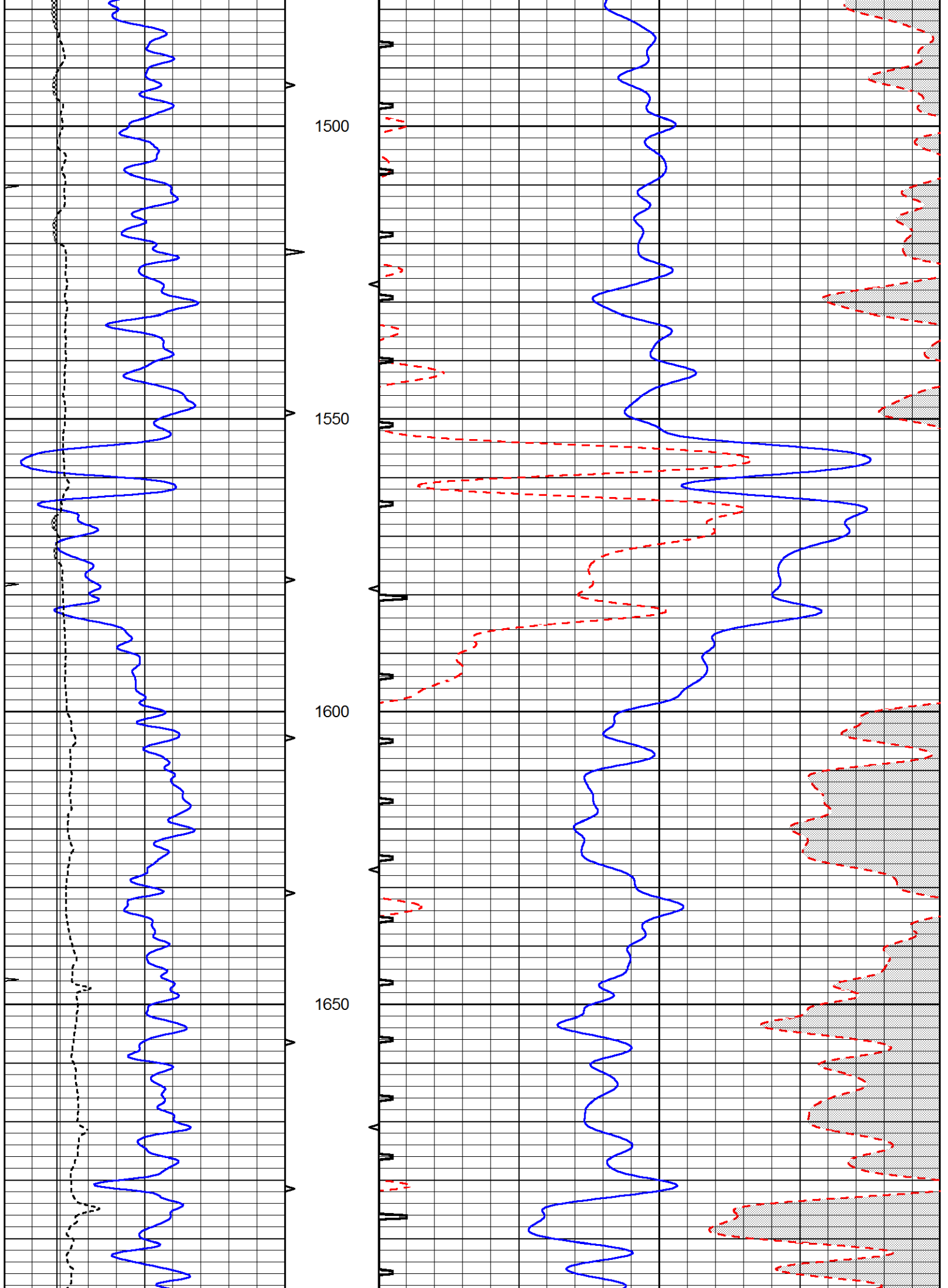


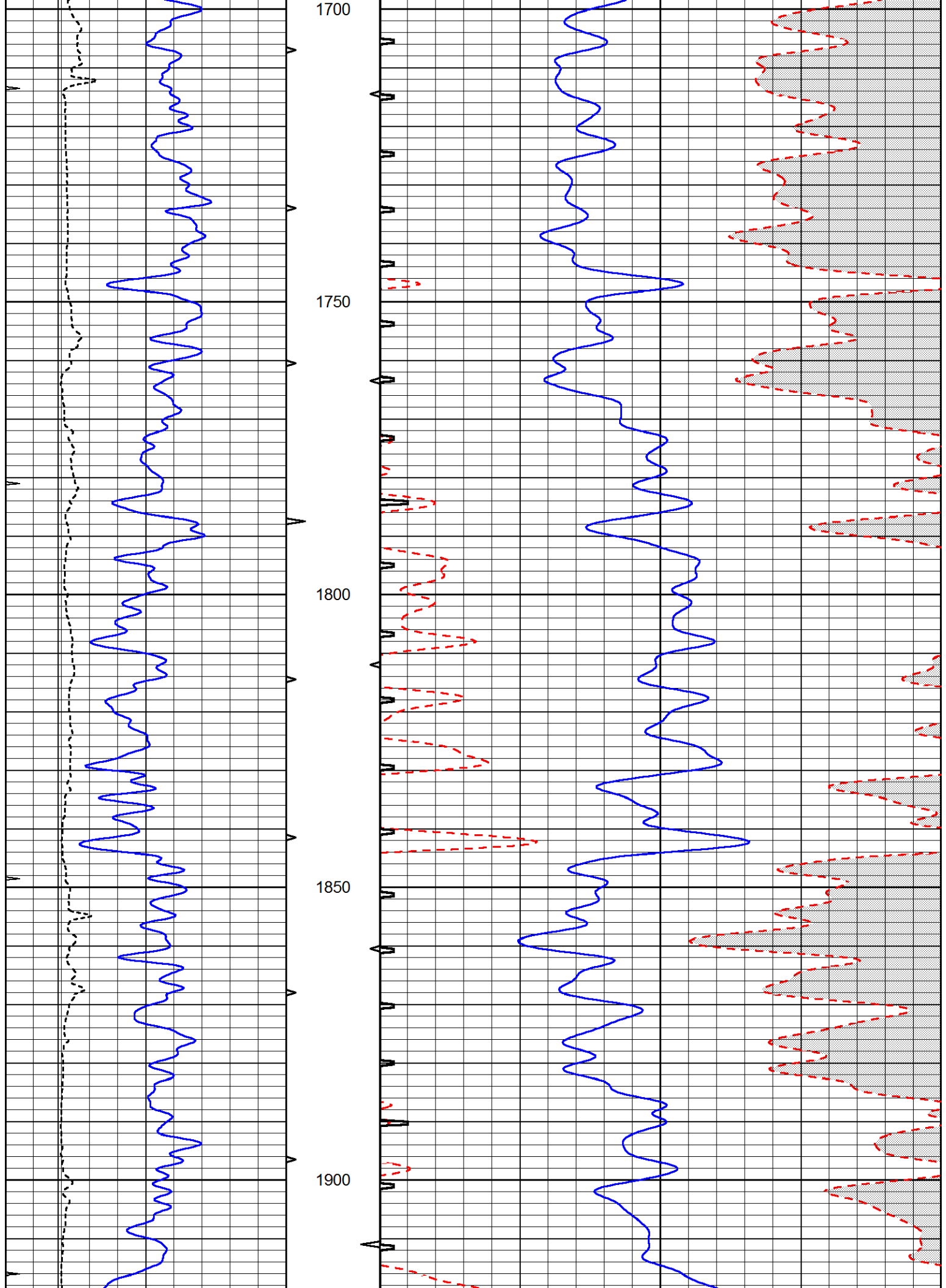


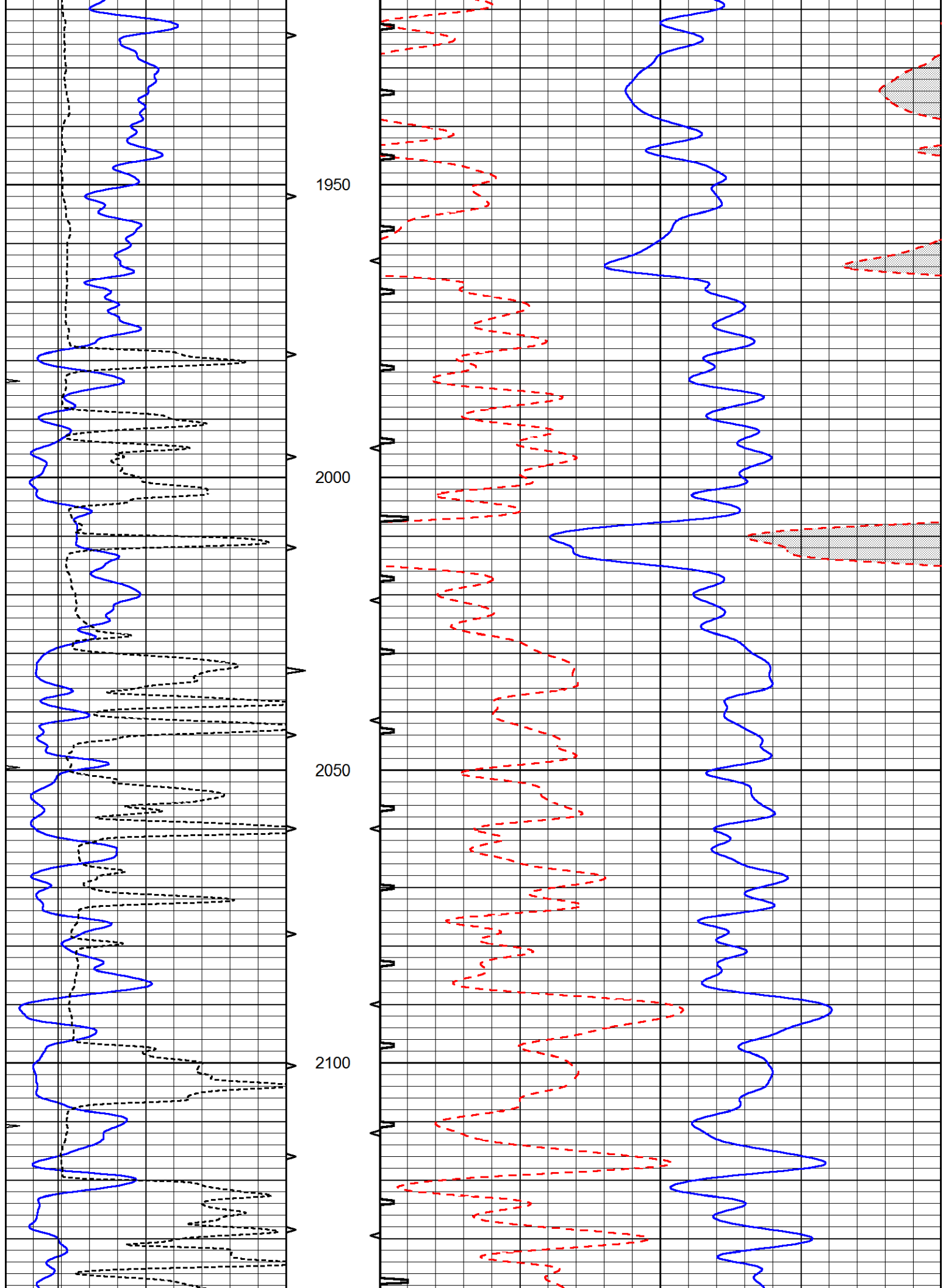


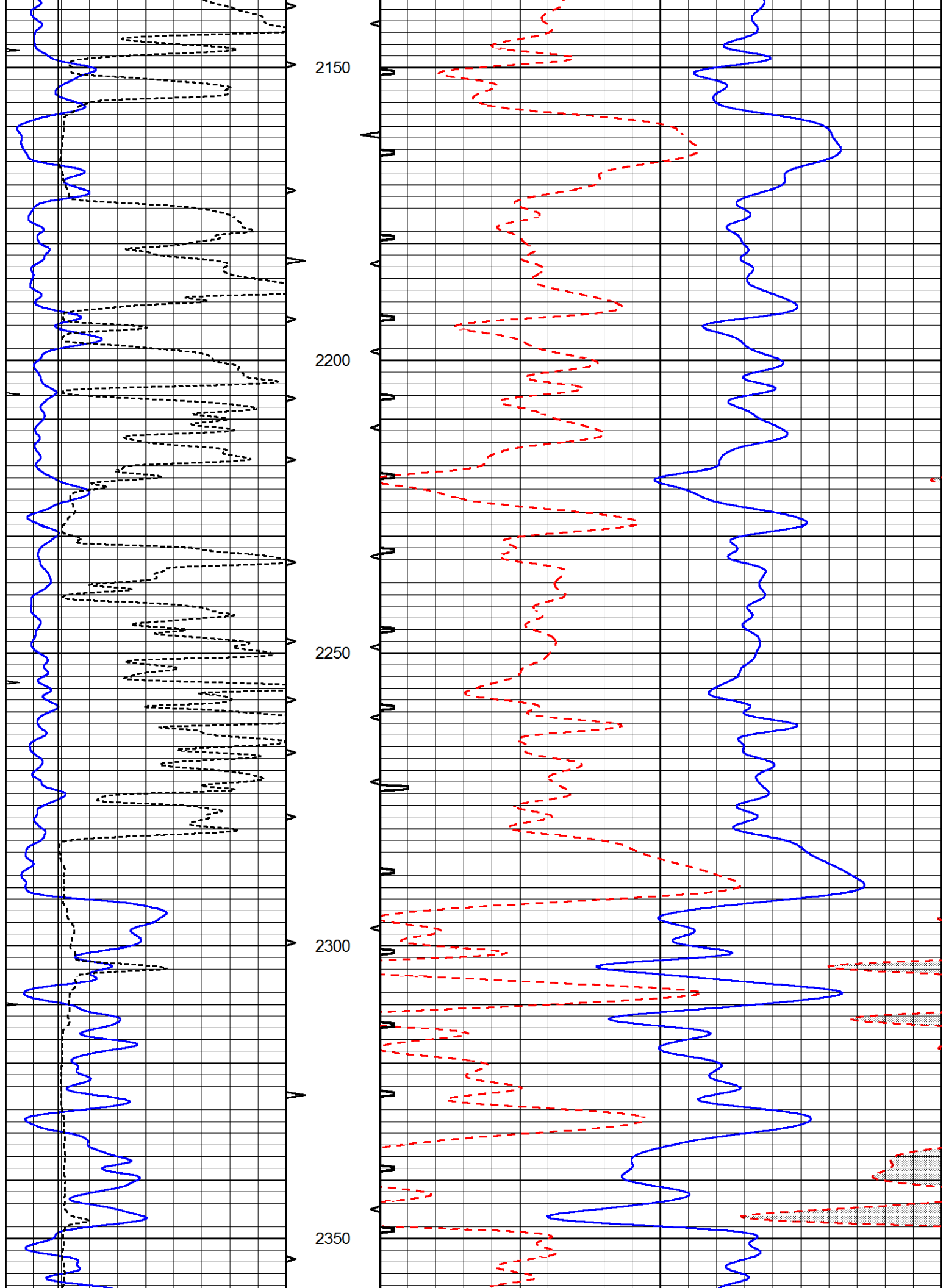


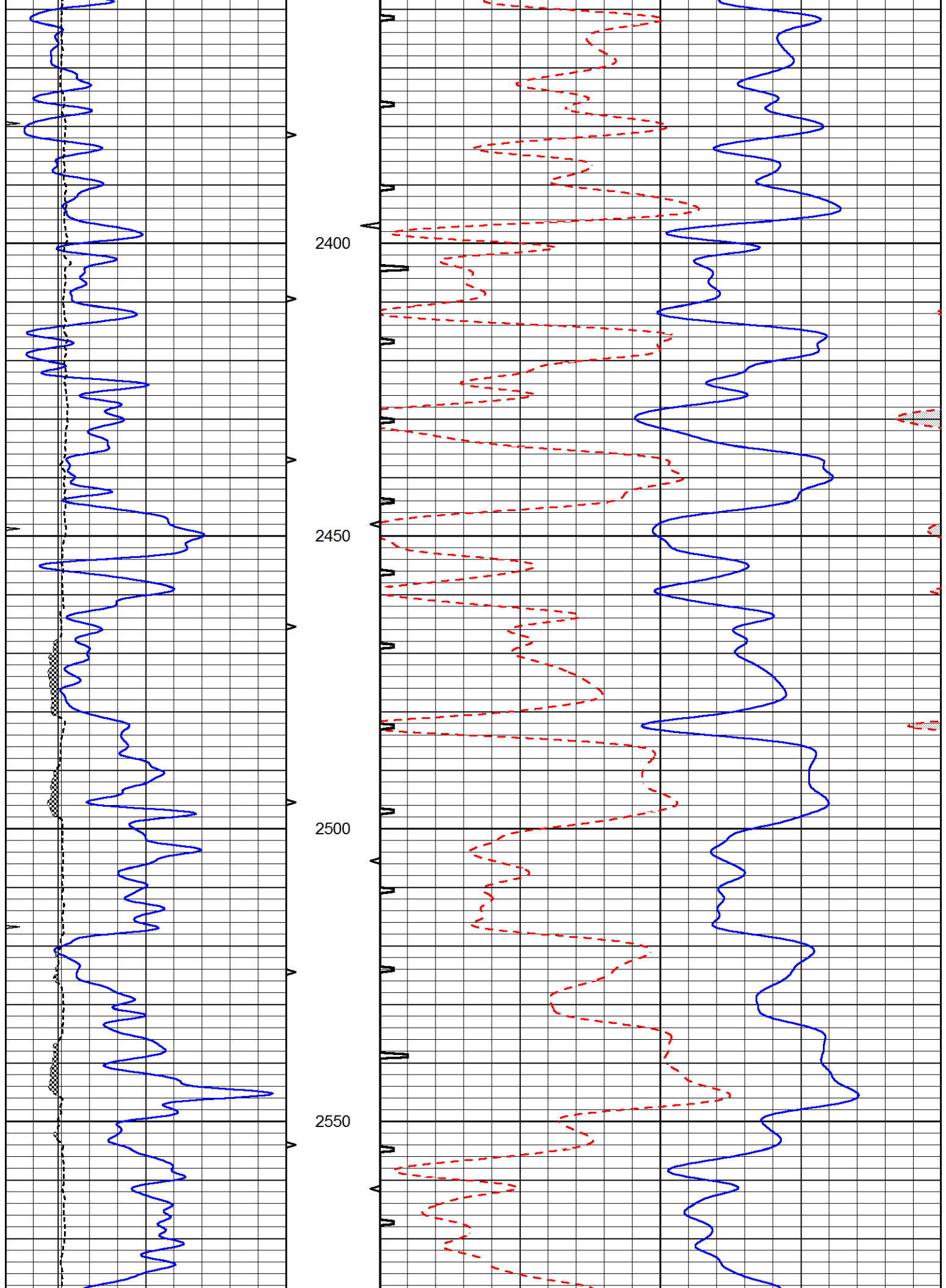


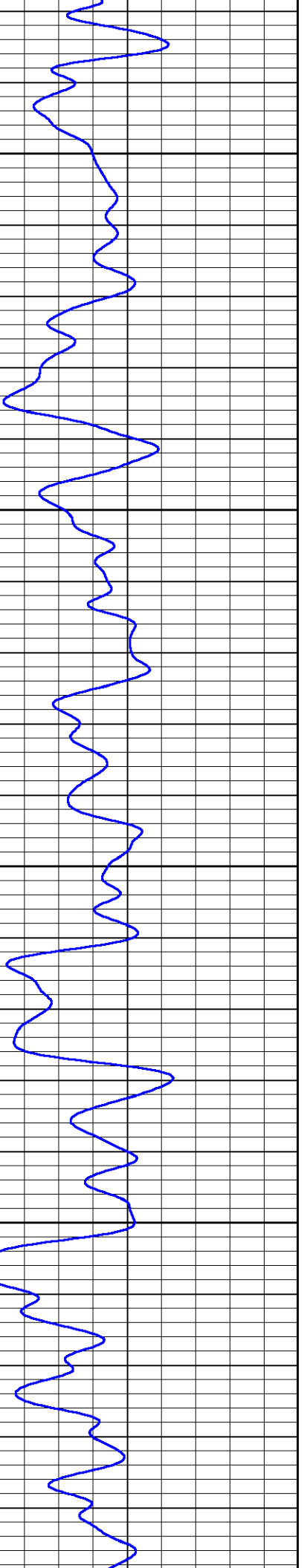
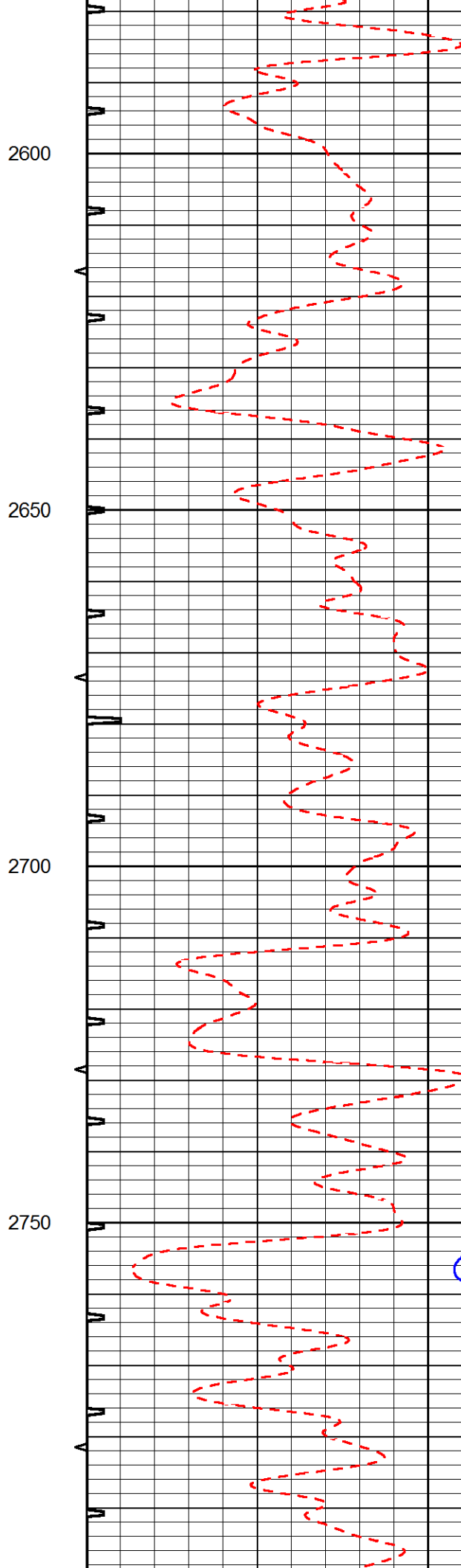
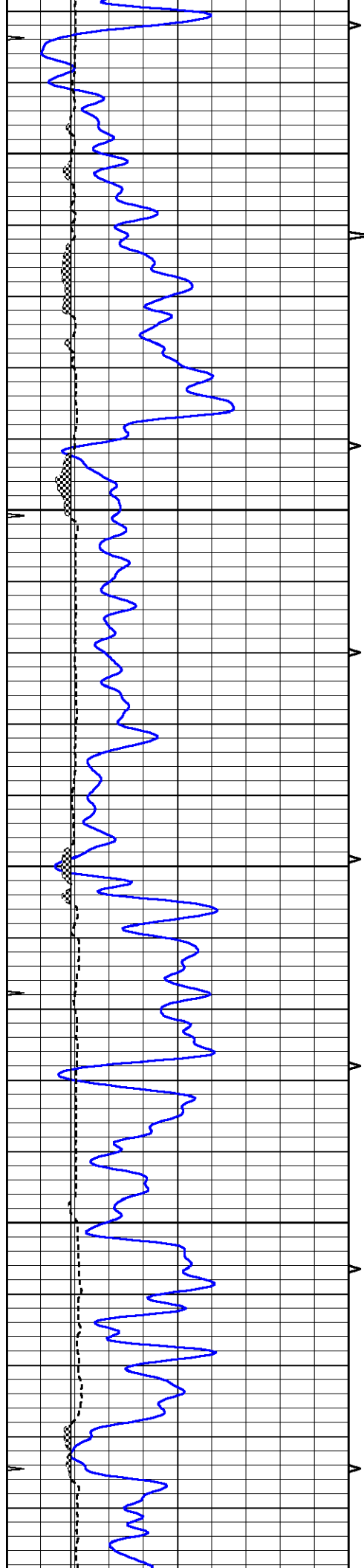


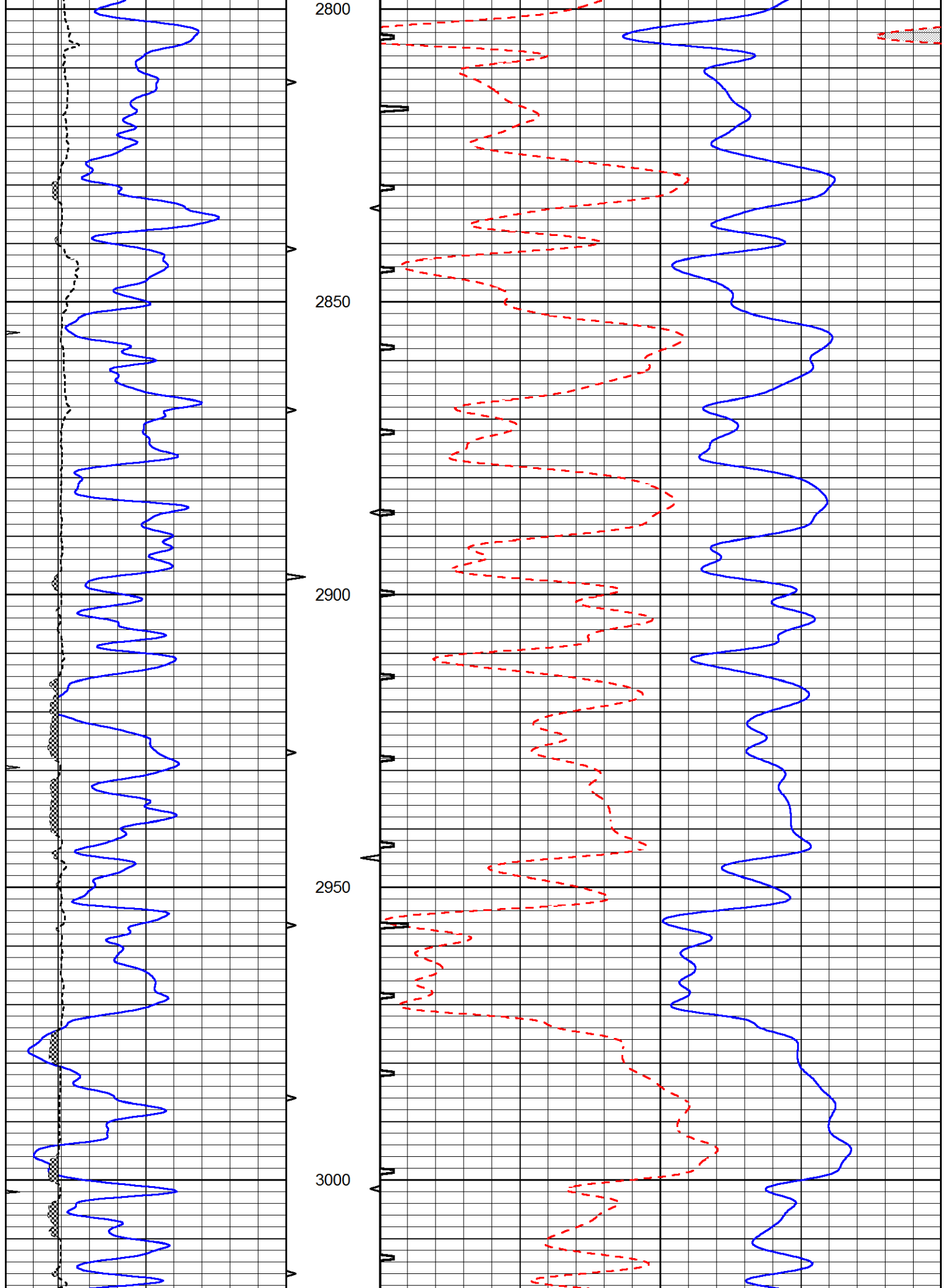


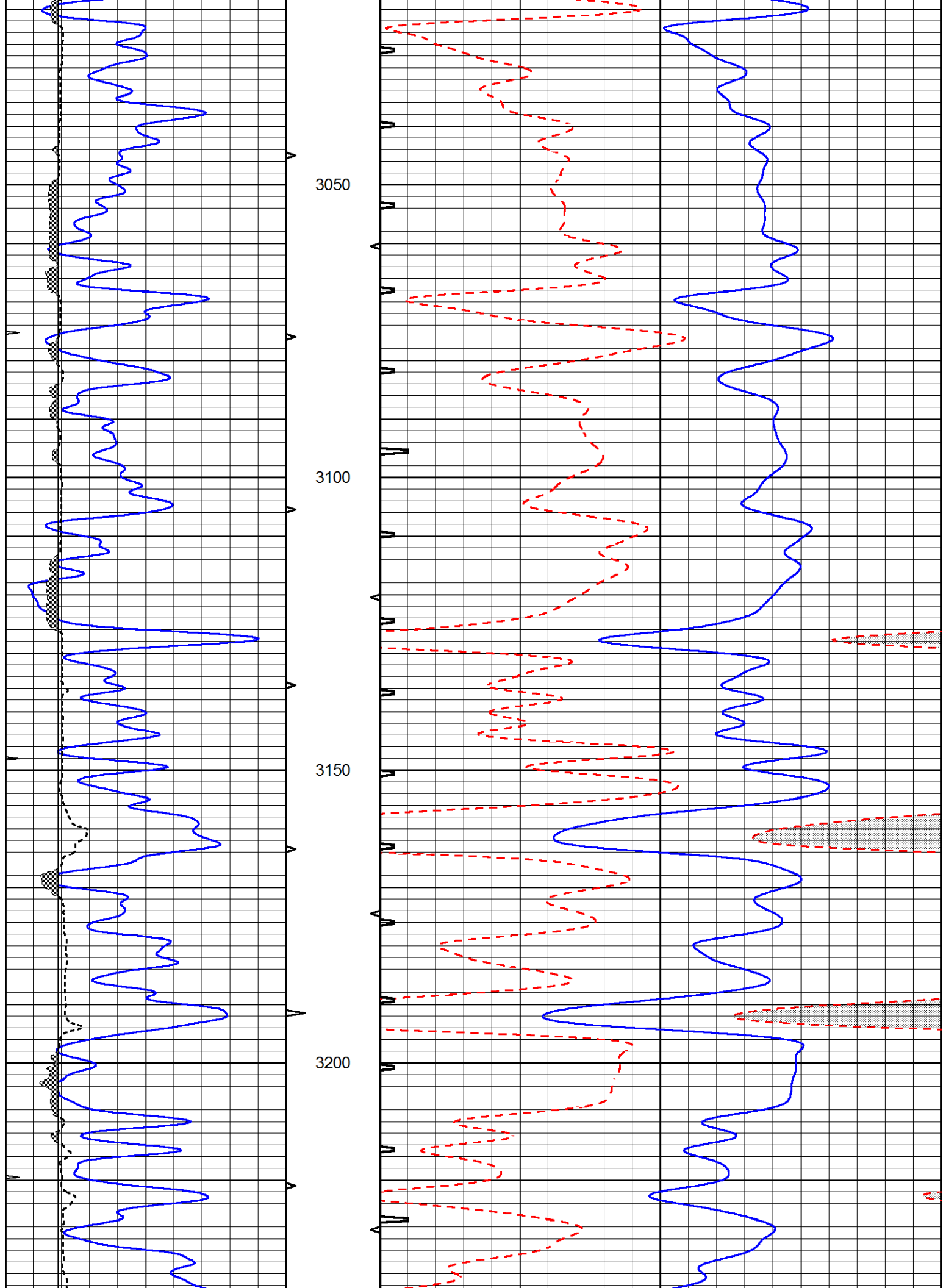


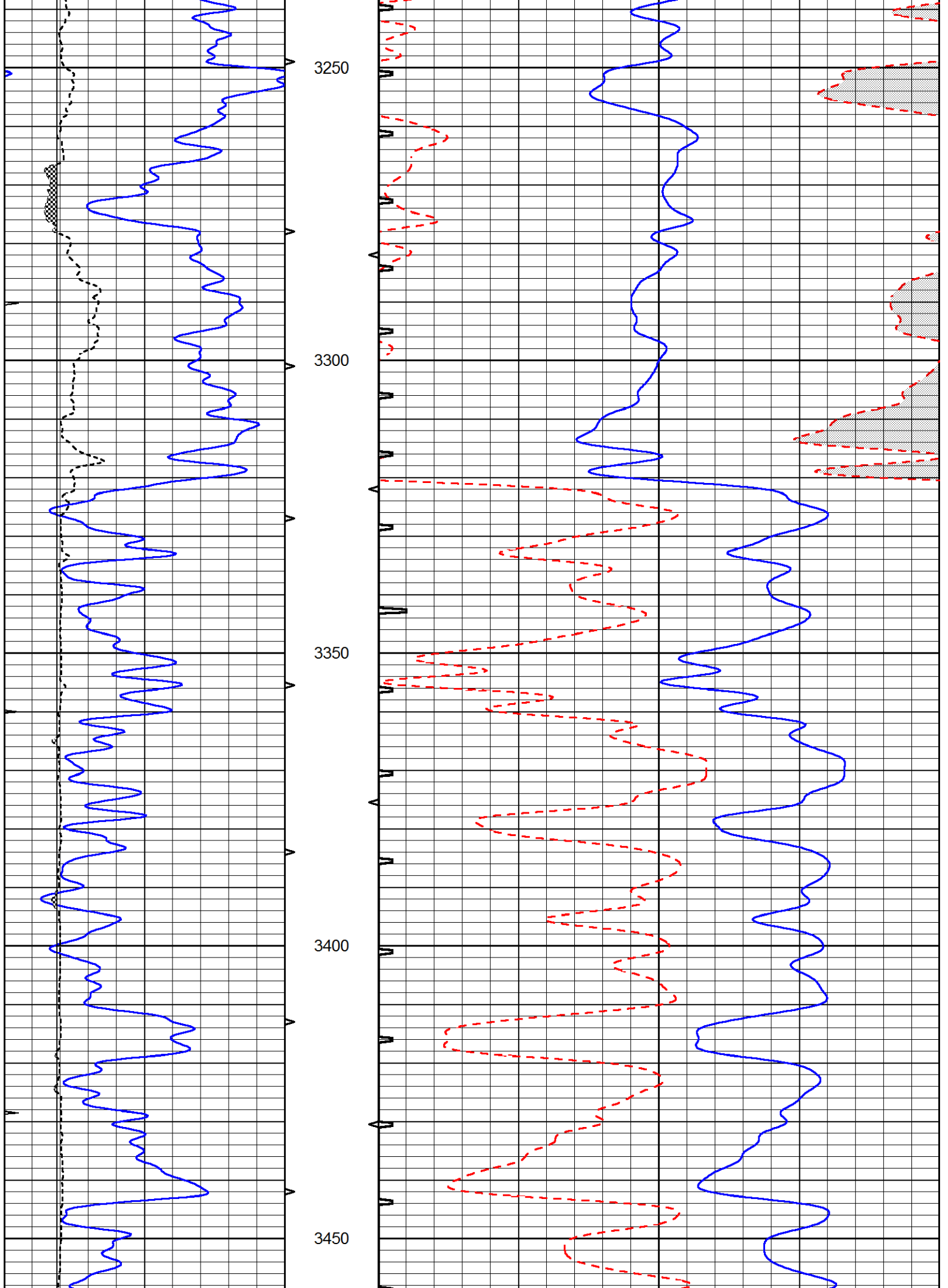


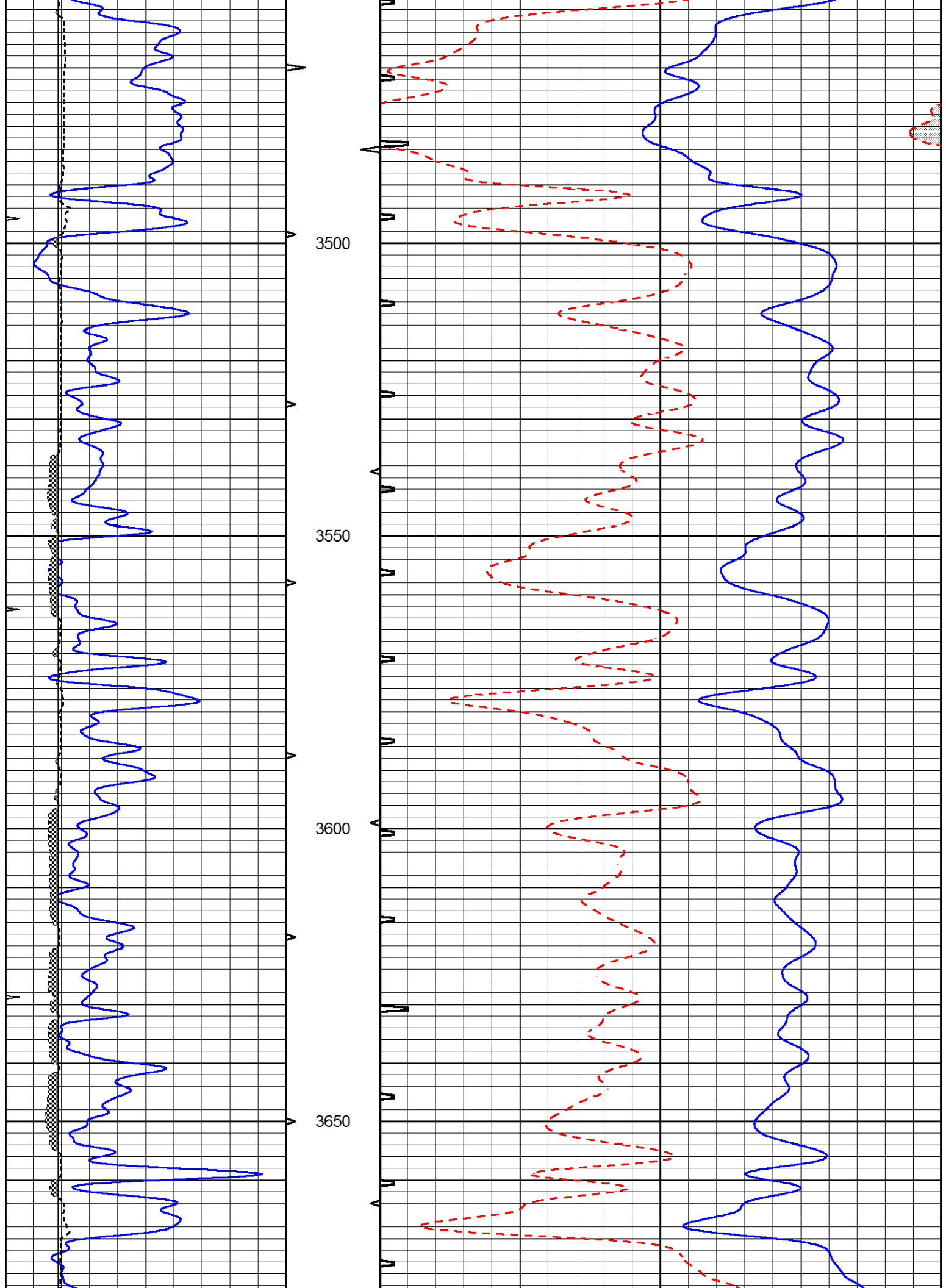


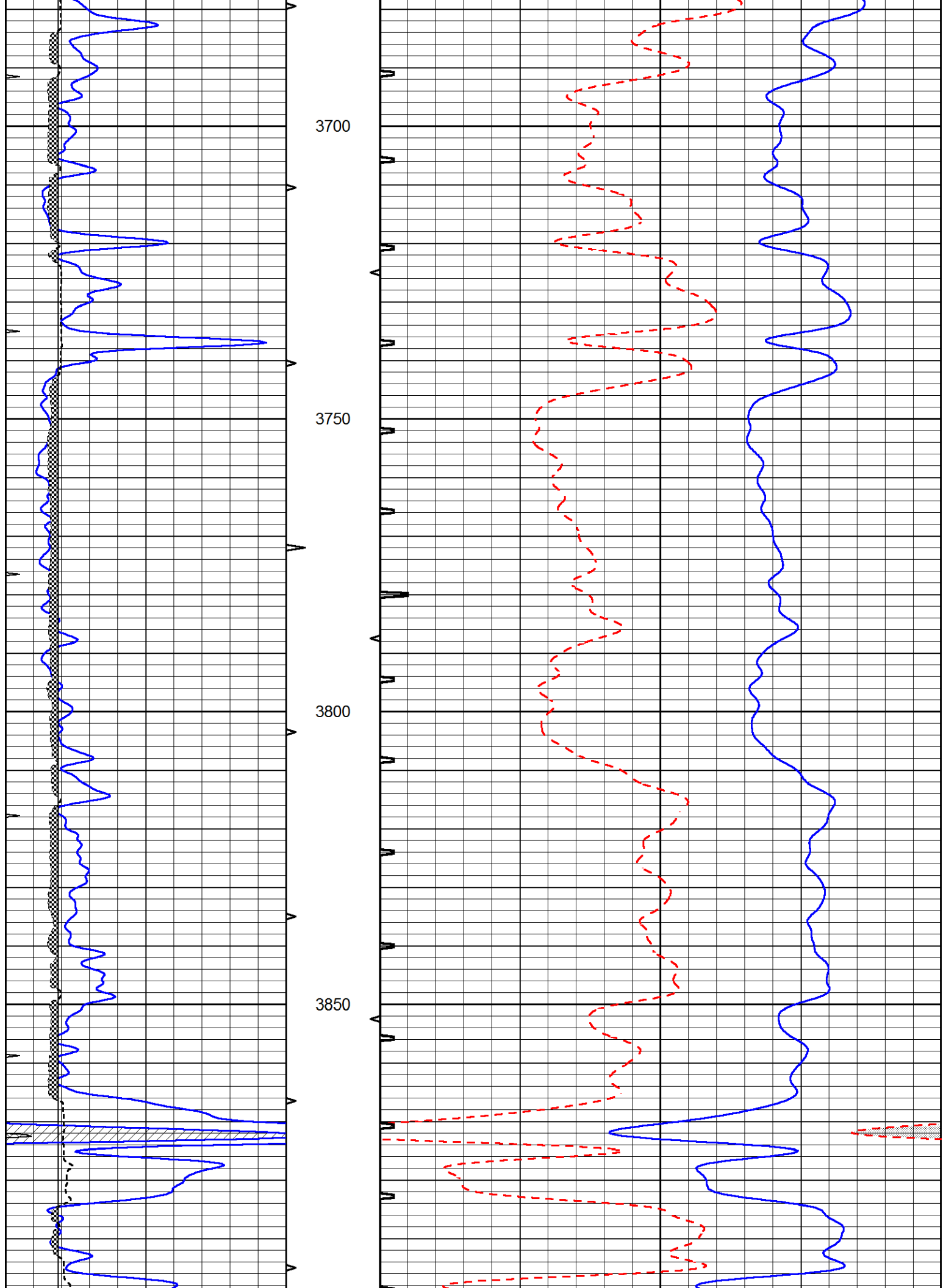


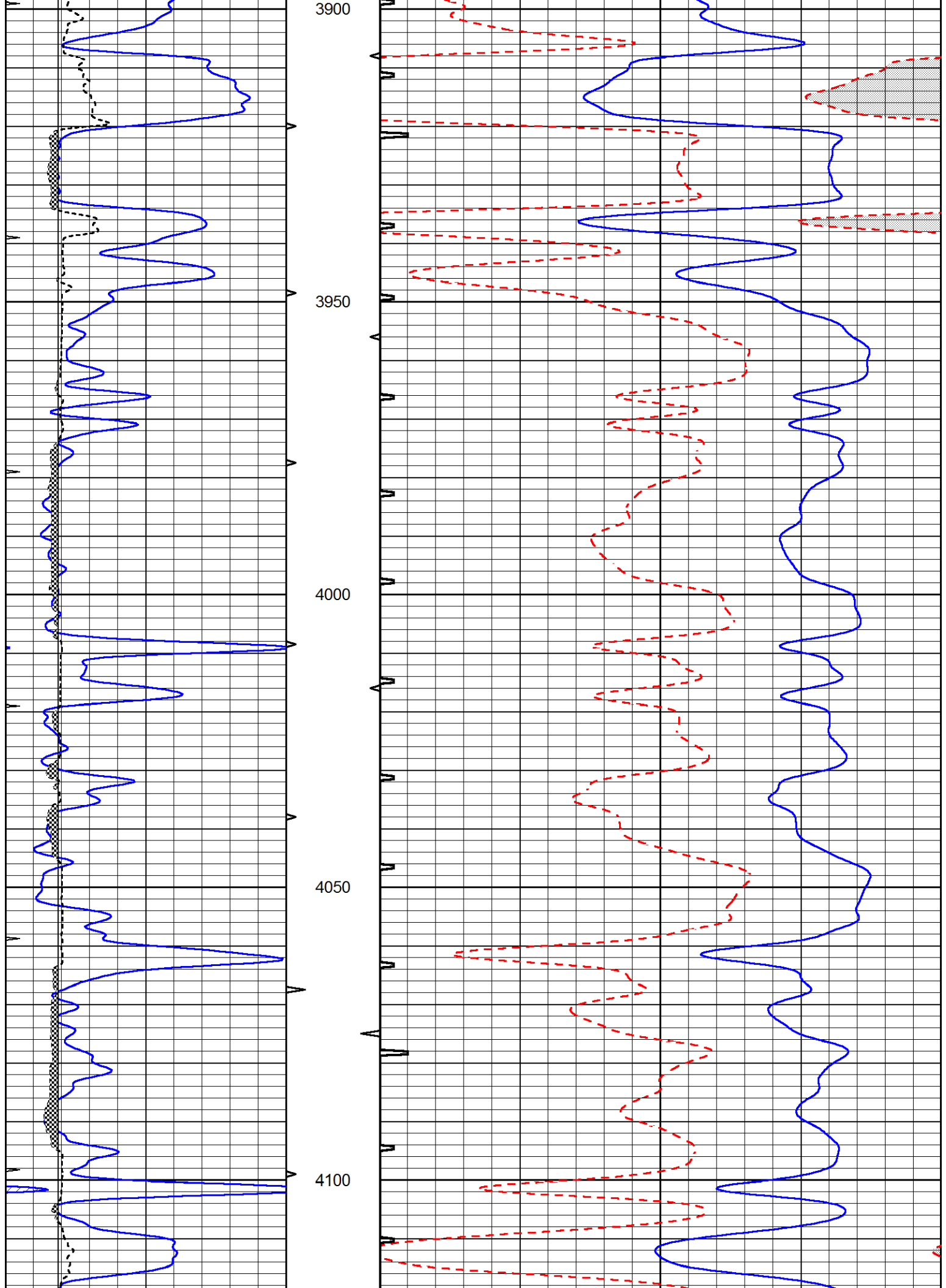


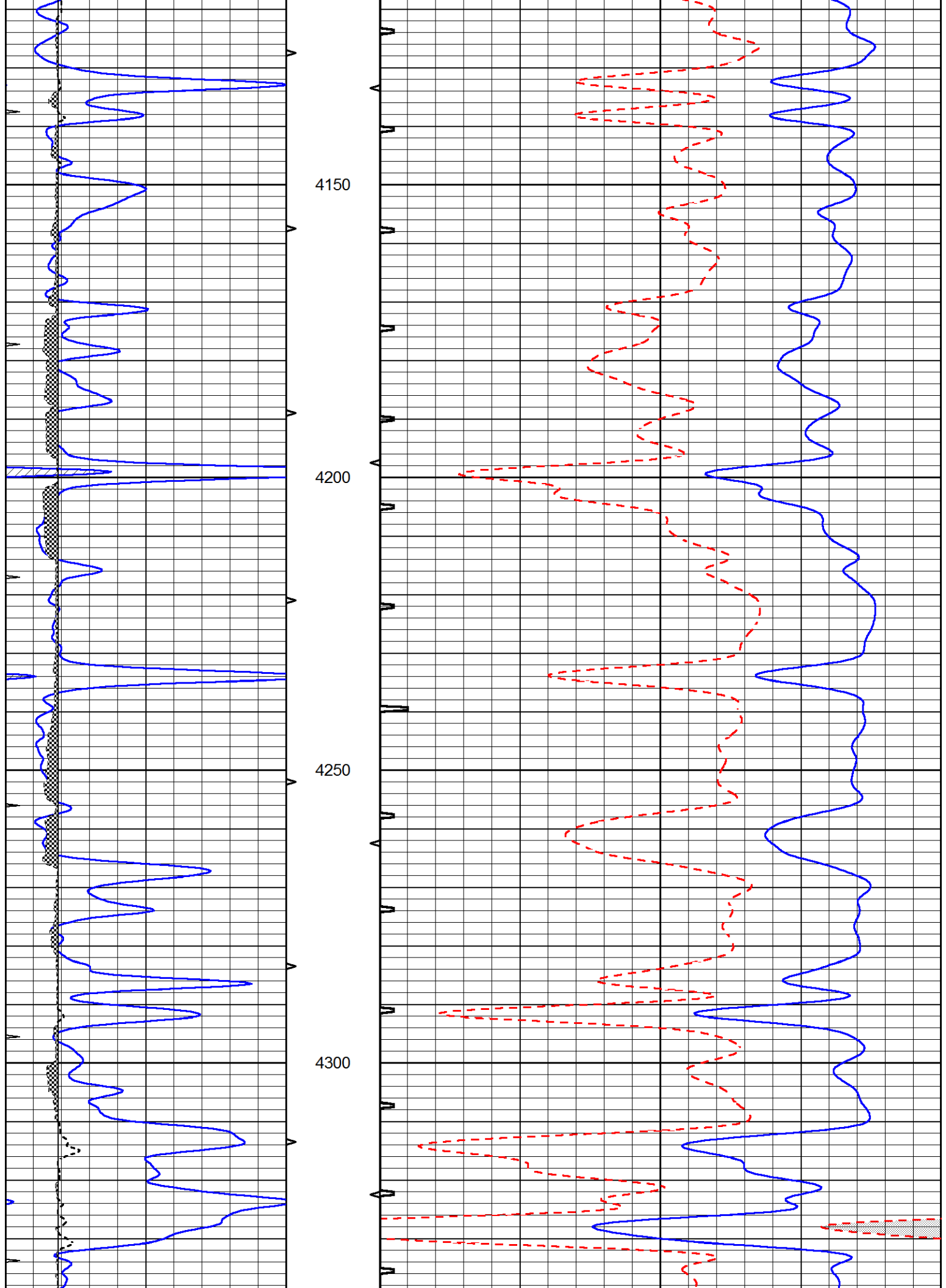


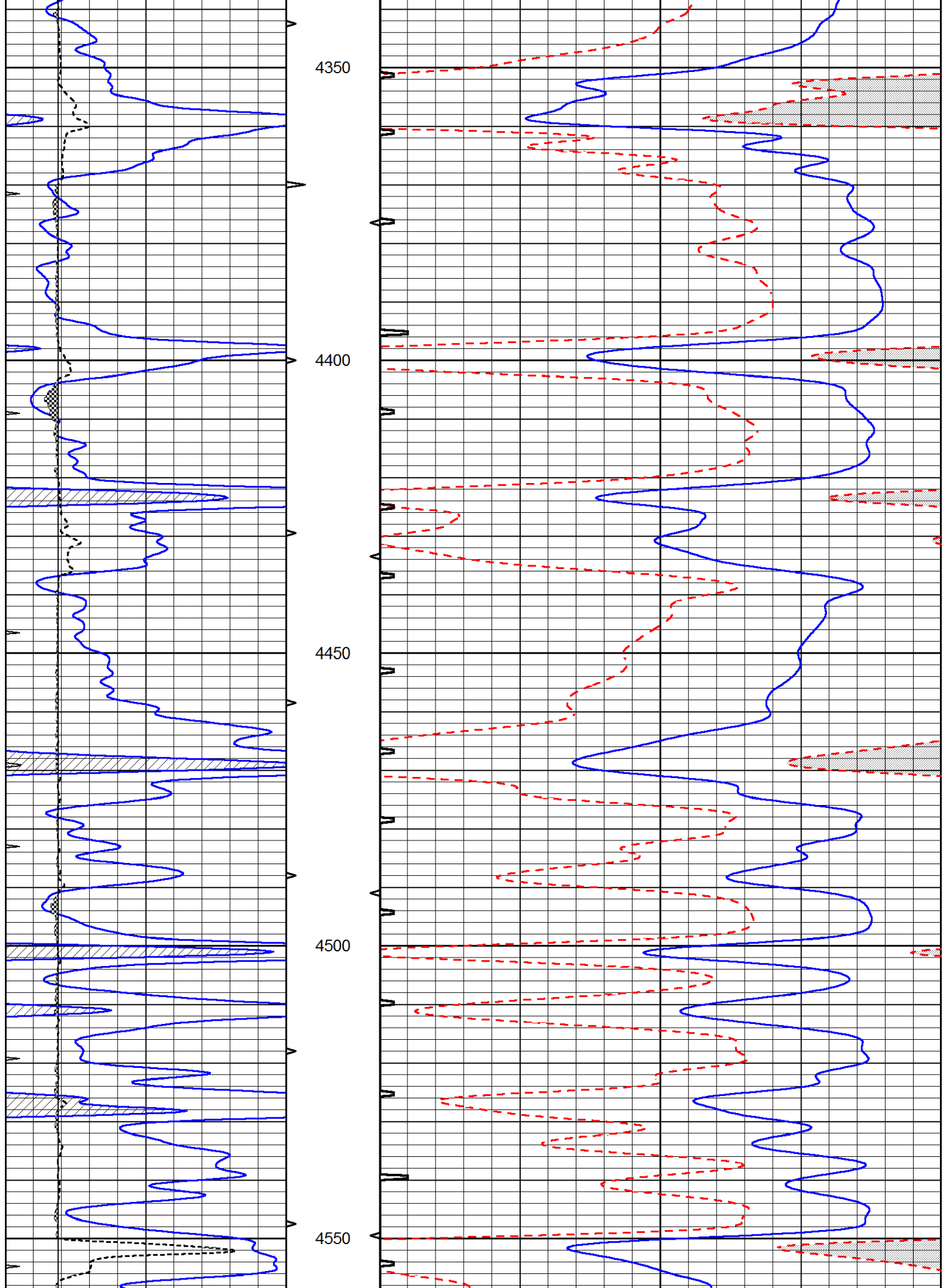


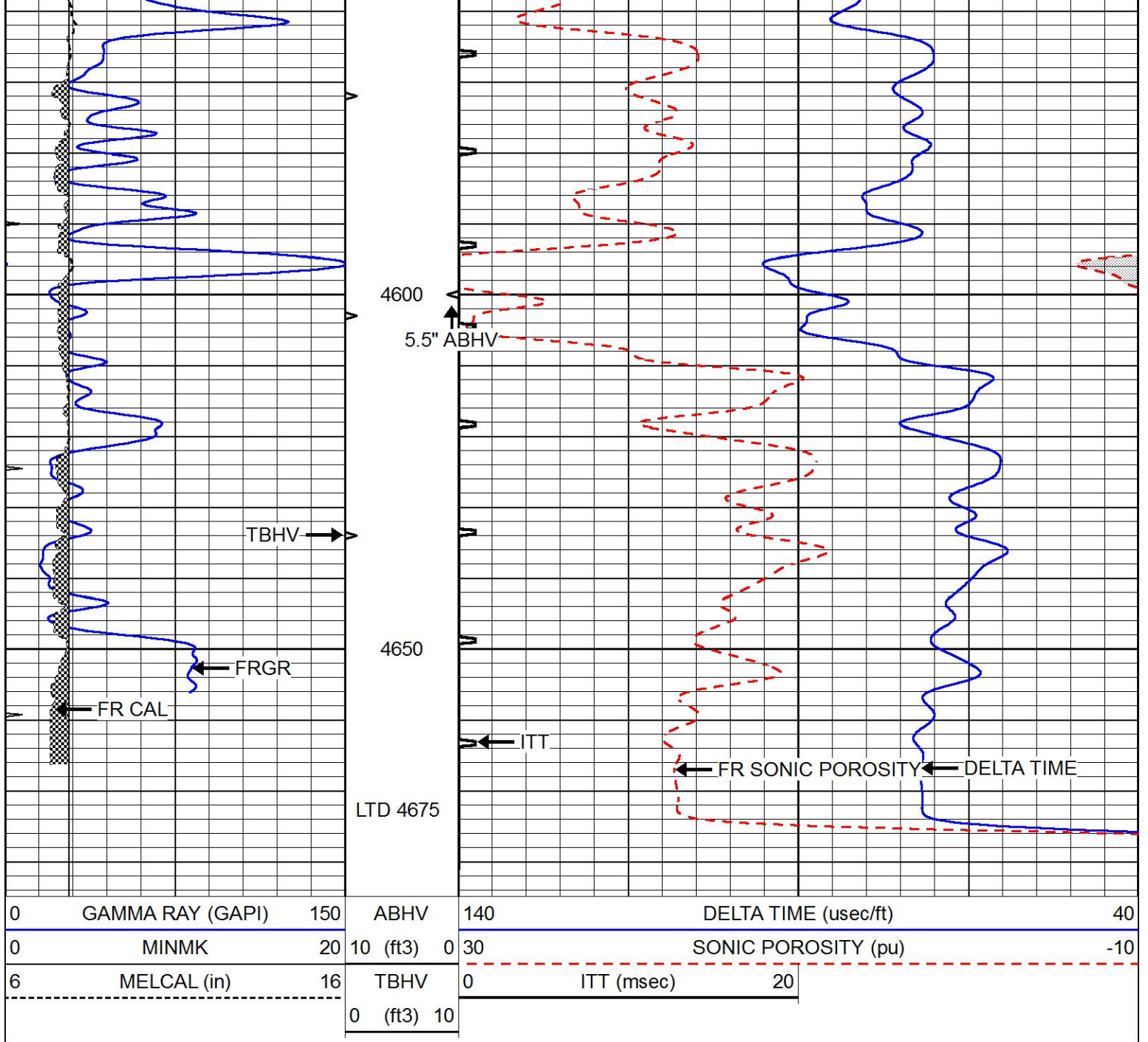








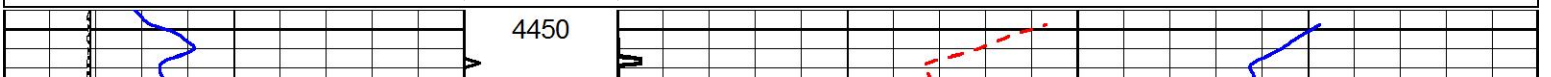


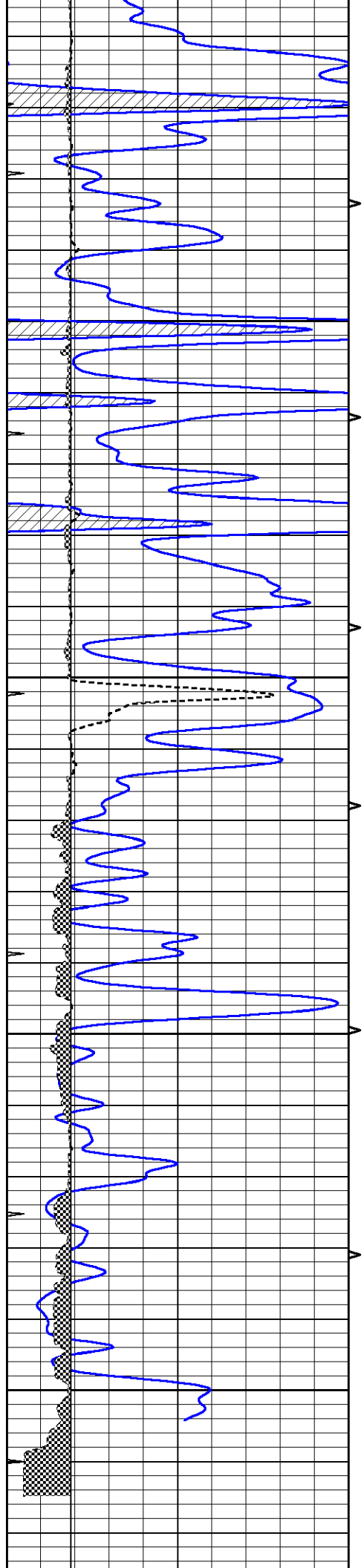


REPEAT SECTION

Database File 7504pe.db
 Dataset Pathname pass11.3
 Presentation Format _slt
 Dataset Creation Thu Feb 09 11:55:52 2023
 Charted by Depth in Feet scaled 1:240

0	GAMMA RAY (GAPI)	150	ABHV	140	DELTA TIME (usec/ft)	40
0	MINMK	20	10 (ft3) 0	30	SONIC POROSITY (pu)	-10
6	MELCAL (in)	16	TBHV	0	ITT (msec)	20
			0 (ft3) 10			





4500

4550

4600

4650

