



**COMPENSATED
DENSITY/NEUTRON
PE LOG**

Company AMERICAN WARRIOR, INC.
Well SHRIMSE - FORD UNIT #1-35
Field WILDCAT
County HODGEMAN **State** KANSAS

Location: API #: 15-083-22025-0000
 986' FSL & 1818' FEL
 NE - NE - NW - NE
 SEC 35 TWP 22S RGE 24W
Permanent Datum GROUND LEVEL Elevation 2331
Log Measured From KELLY BUSHING 8' A.G.L.
Drilling Measured From KELLY BUSHING
Other Services DILMEL SONIC
Elevation K.B. 2339
 D.F. 2337
 G.L. 2331

Date	2/9/23
Run Number	ONE
Depth Driller	4680
Depth Logger	4675
Bottom Logged Interval	4651
Top Log Interval	3700
Casing Driller	8 5/8"@221'
Casing Logger	221
Bit Size	7 7/8"
Type Fluid in Hole	CHEMICAL MUD
Density / Viscosity	9.4/50
pH / Fluid Loss	10.5/7.6
Source of Sample	FLOWLINE
Rm @ Meas. Temp	1.00@60F
Rmf @ Meas. Temp	.750@60F
Rmc @ Meas. Temp	1.20@60F
Source of Rmf / Rmc	MEASUREMENT
Rm @ BHT	.492@122F
Time Circulation Stopped	2 HOURS
Time Logger on Bottom	9:00 A.M.
Maximum Recorded Temperature	122F
Equipment Number	8916
Location	HAYS, KANSAS
Recorded By	JEFF LUEBBERS
Witnessed By	JASON T. ALM

<<< Fold Here >>>

All interpretations are opinions based on inferences from electrical or other measurements and we cannot and do not guarantee the accuracy or correctness of any interpretation, and we shall not, except in the case of gross or willful negligence on our part, be liable or responsible for any loss, costs, damages, or expenses incurred or sustained by anyone resulting from any interpretation made by any of our officers, agents or employees. These interpretations are also subject to our general terms and conditions set out in our current Price Schedule.

Comments

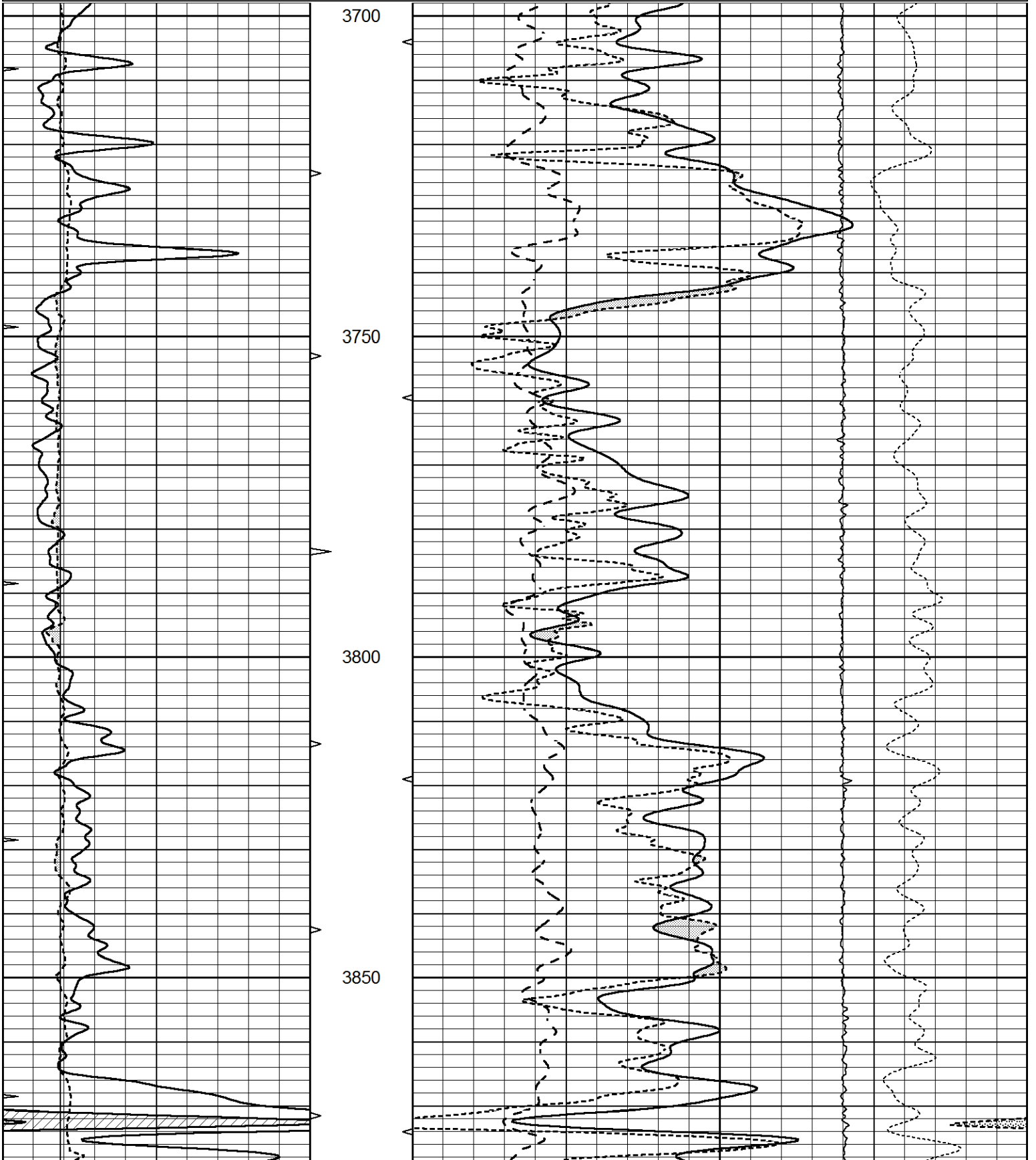
THANK YOU FOR USING ELI WIRELINE, HAYS, KS. (785) 628-6395
 DIRECTIONS:
 JETMORE, KS., 1 1/4W. ON HWY 156, 1N., W. INTO

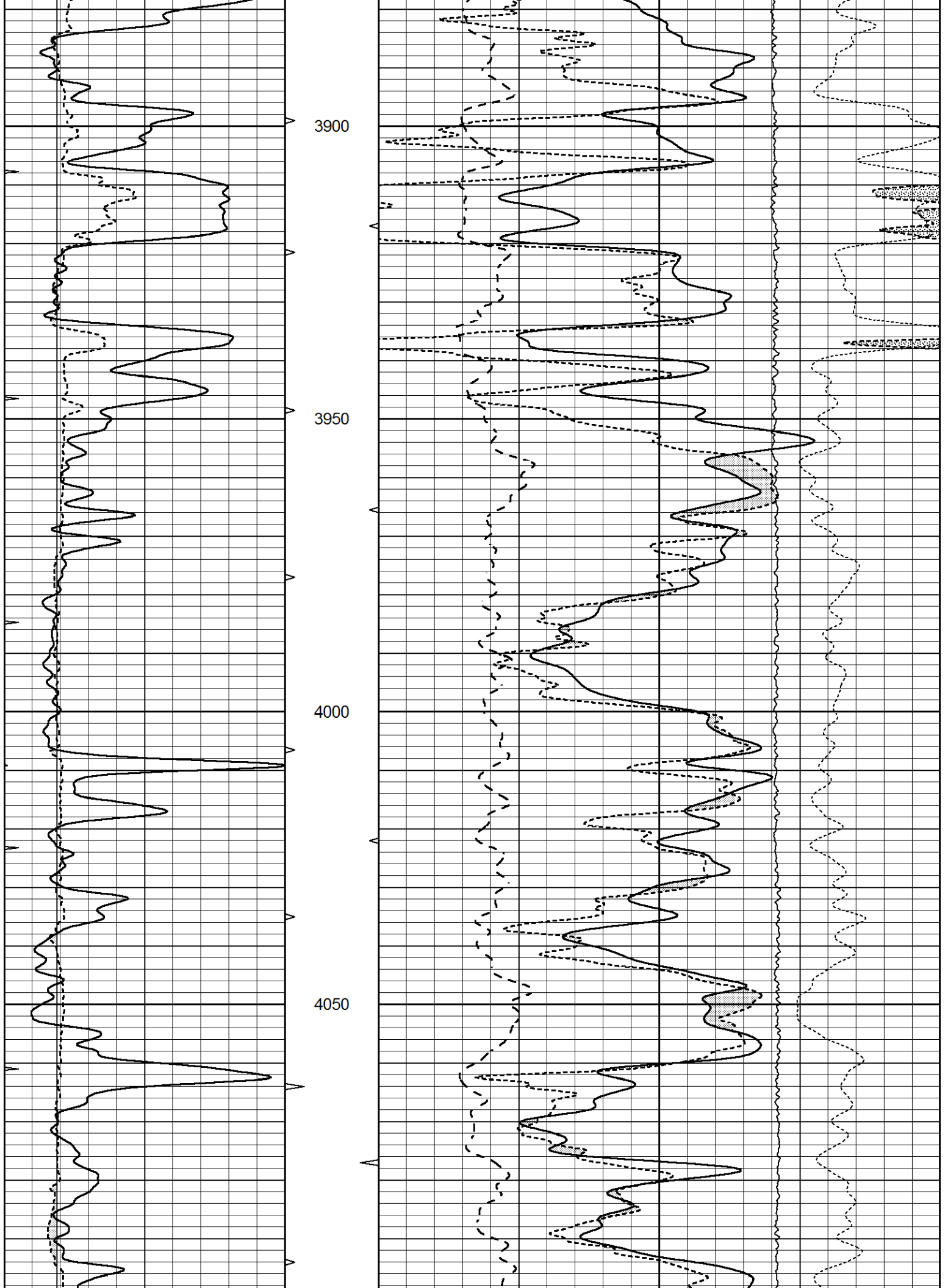


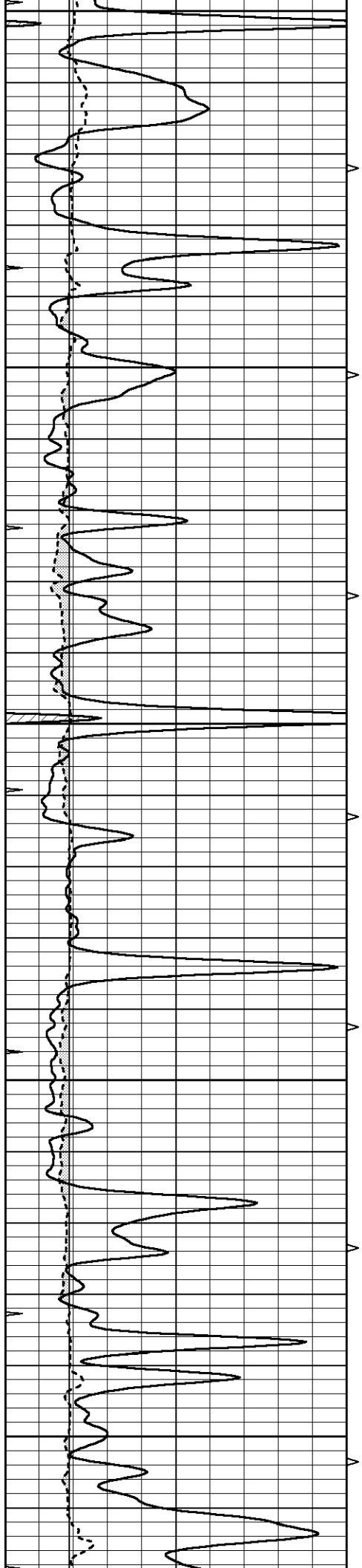
MAIN SECTION

Database File 7504pe.db
 Dataset Pathname pass3.1M
 Presentation Format ldt_neu
 Dataset Creation Thu Feb 09 10:56:34 2023
 Charted by Depth in Feet scaled 1:240

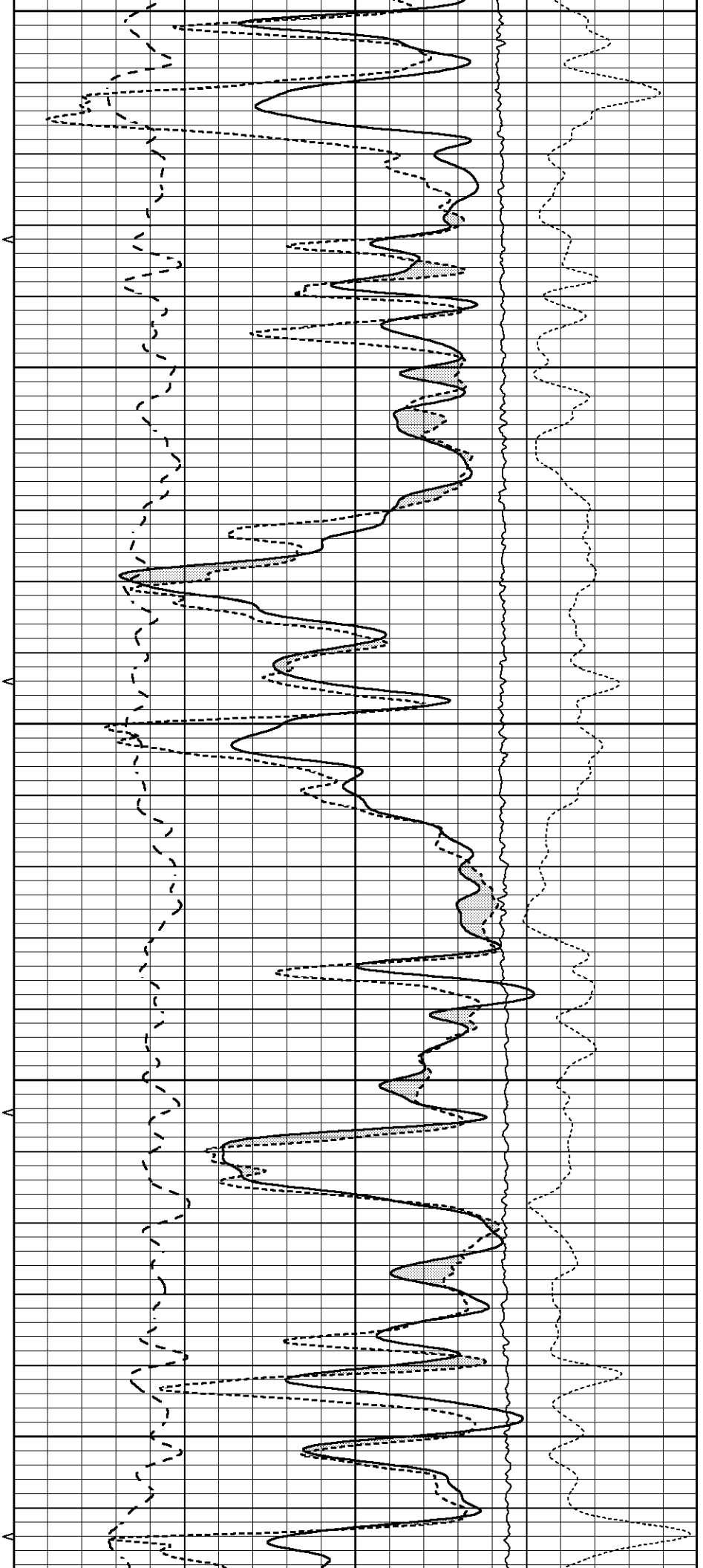
0	GAMMA RAY (GAPI)	150	ABHV	30	COMPENSATED DENSITY (pu)		-10
6	CALIPER (in)	16	10 (ft3)	0	COMPENSATED NEUTRON (pu)		-10
0	MINMK	20	TBHV	0	PE	10	0
			0 (ft3)	10			LTEN (lb)
							-0.25
							CORRECTION (g/cc)
							0.25

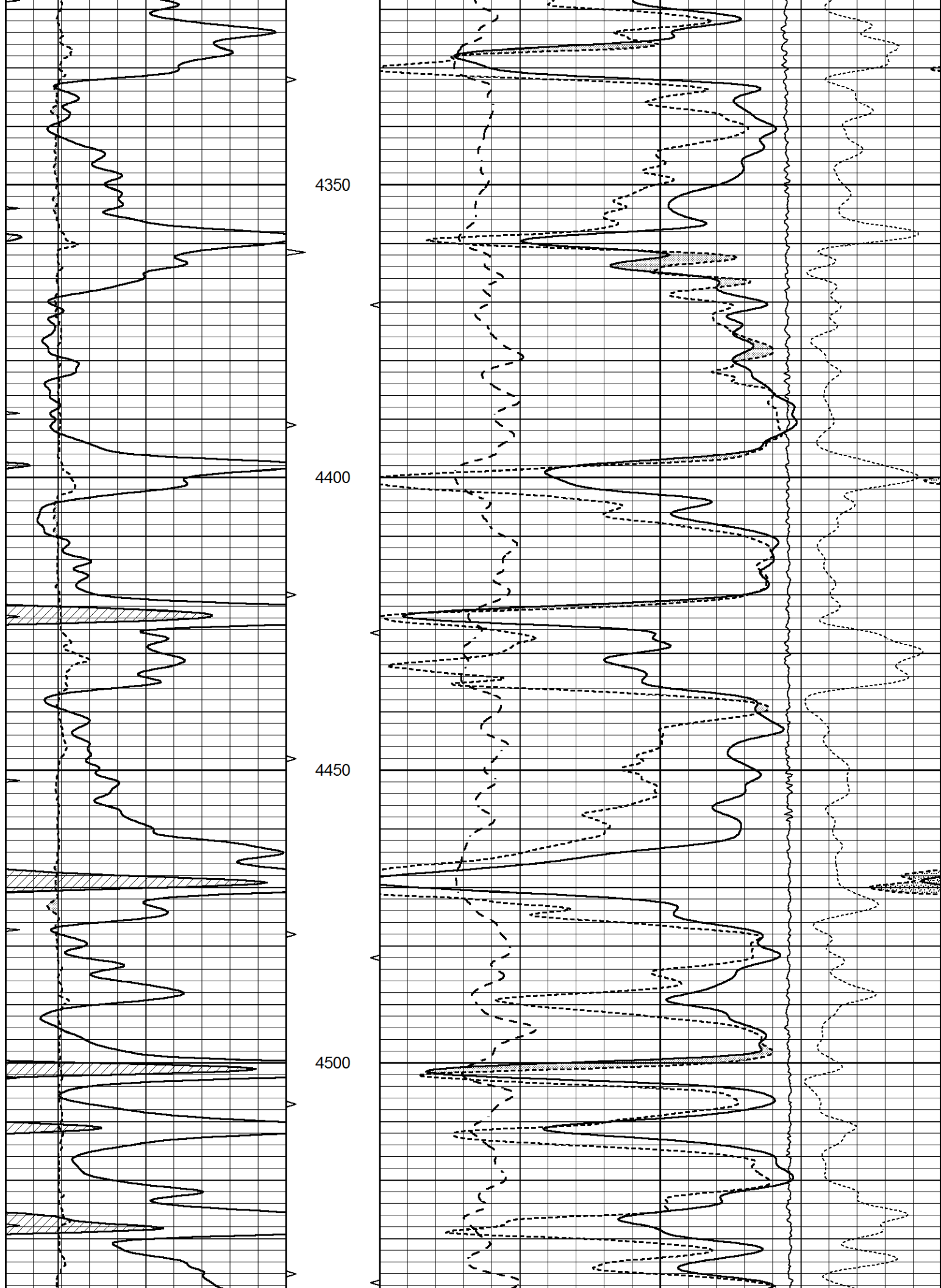


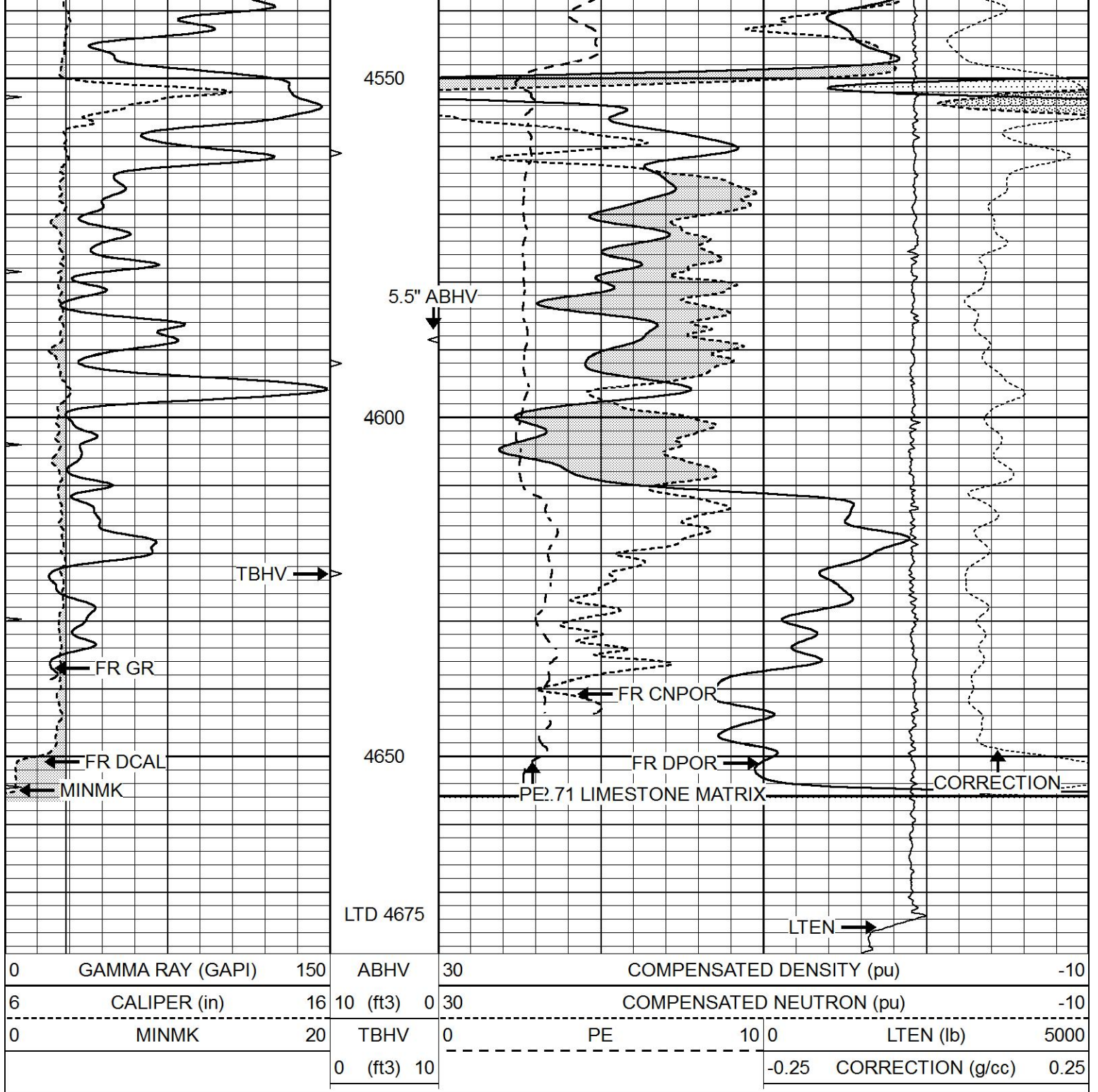




4100
4150
4200
4250
4300







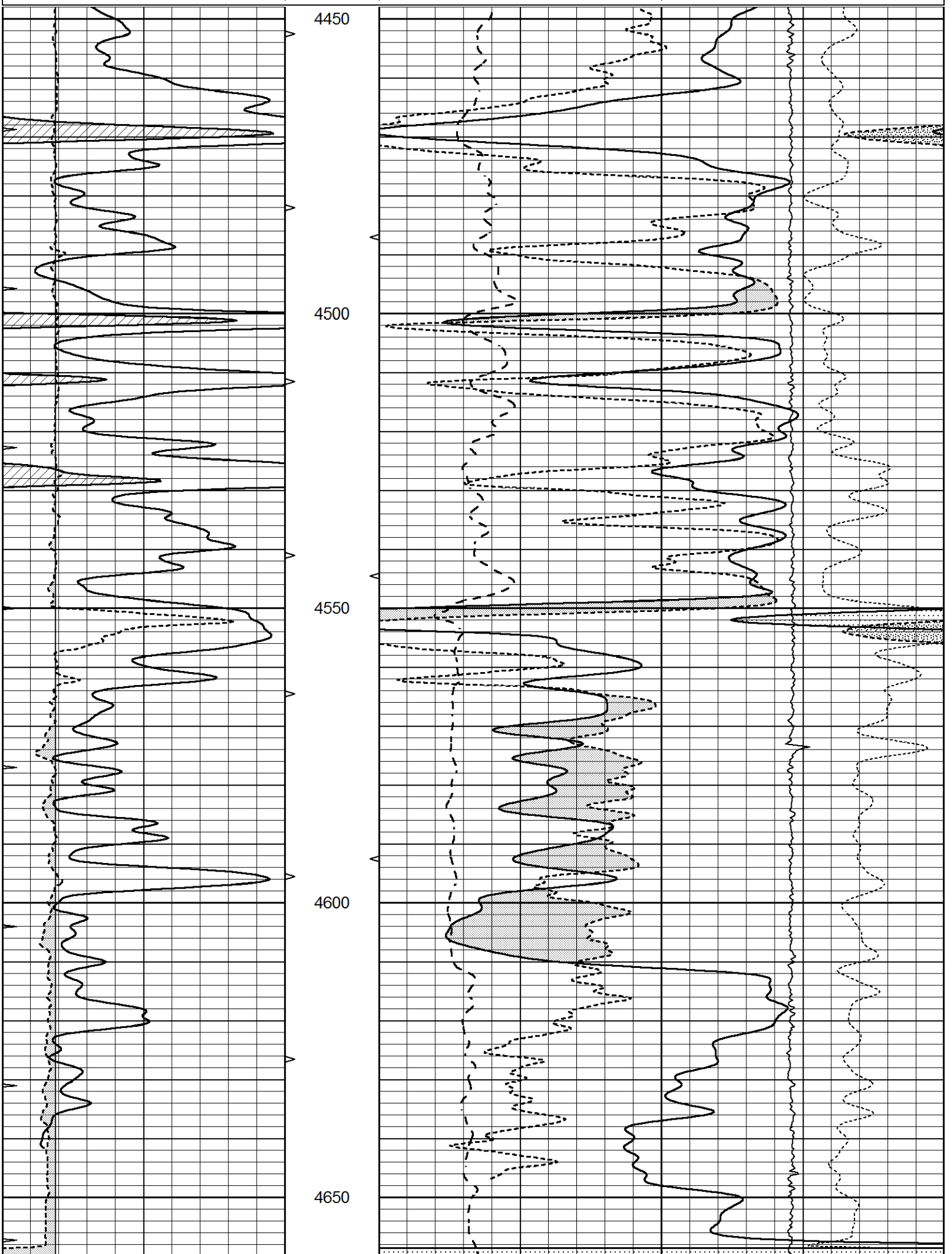
REPEAT SECTION

Database File 7504pe.db
 Dataset Pathname pass2.1R
 Presentation Format ldt_neu
 Dataset Creation Thu Feb 09 10:20:29 2023
 Charted by Depth in Feet scaled 1:240

0	GAMMA RAY (GAPI)	150	ABHV	30	COMPENSATED DENSITY (pu)	-10
6	CALIPER (in)	16	10 (ft3)	0 30	COMPENSATED NEUTRON (pu)	-10
0	MINMK	20	TBHV	0	PE	10 0
					LTEN (lb)	5000

0 (ft3) 10

-0.25 CORRECTION (g/cc) 0.25



0	GAMMA RAY (GAPI)	150	ABHV	30	COMPENSATED DENSITY (pu)				-10	
6	CALIPER (in)	16	10 (ft3)	0	30	COMPENSATED NEUTRON (pu)				-10
0	MINMK	20	TBHV	0	PE	10	0	LTEN (lb)	5000	
			0 (ft3)	10			-0.25	CORRECTION (g/cc)	0.25	

Calibration Report

Database File 7504pe.db
 Dataset Pathname pass3.1M
 Dataset Creation Thu Feb 09 10:56:34 2023

Dual Induction Calibration Report

Serial-Model: DIL7-GEAR
 Surface Cal Performed: Thu Feb 09 10:15:05 2023
 Downhole Cal Performed: Tue Jul 22 10:15:08 2008
 After Survey Verification Performed: Wed Jan 18 02:07:20 2023

Surface Calibration

Loop:	Readings				References			Results	
	Air	Loop			Air	Loop		m	b
Deep	0.019	0.660	V	0.000	400.000	mmho/m	660.000	17.000	
Medium	-0.006	0.655	V	0.000	462.500	mmho/m	720.000	-31.000	
Internal:	Zero	Cal		Zero	Cal		m	b	
Deep	0.010	0.665	V	0.000	400.000	mmho/m	610.018	-5.925	
Medium	0.009	0.655	V	0.000	400.000	mmho/m	618.983	-5.564	

Downhole Calibration

Internal:	Readings				References			Results	
	Zero	Cal			Zero	Cal		m	b
Deep	0.000	0.000	mmho/m	-6.200	401.333	mmho/m	1.000	0.000	
Medium	0.000	0.000	mmho/m	-1.141	472.660	mmho/m	1.000	0.000	
Shallow	2.521	0.019	V	500.000	2.000	Ohm-m	200.000	0.500	

After Survey Verification

Internal:	Readings				Targets			Results	
	Zero	Cal			Zero	Cal		m'	b'
Deep	0.000	1.000	mmho/m	0.000	1.000	mmho/m	1.000	0.000	
Medium	0.000	1.000	mmho/m	0.000	1.000	mmho/m	1.000	0.000	
Shallow	2.500	0.010	Ohm-m	500.000	2.000	Ohm-m	200.000	0.000	

Litho Density Calibration Report

Serial: 004 Model: PRB

Master Calibration

Performed Fri Nov 04 15:19:59 2022

Background Magnesium Aluminum Aluminum+Fe

Window 1	1153.2	7232.1	2536.8	2279.5	cps
Window 2	1055.6	6225.5	2222.3	2030.5	cps
Window 3	902.5	3849.3	1546.4	1462.0	cps
Window 4	254.4	258.2	253.1	253.9	cps
Long Space	0.0	5169.9	1166.7	974.9	cps
Short Space	4.7	1383.0	950.5	792.1	cps
Rho		1.7100	2.5900	0.0000	g/cc
Pe		2.0000	2.7500	5.7900	

Rib Angle	: 45.9	Rib Slope	: 1.031	Density/Spine Ratio	: 0.573
Spine Angle	: 75.9	Spine Slope	: 3.970	Spine Intercept	: -20.2

Before Survey Verification

Performed Wed Dec 31 18:00:00 1969

Window 1	0.0	0.0	0.0	0.0	cps
Window 2	0.0	0.0	0.0	0.0	cps
Window 3	0.0	0.0	0.0	0.0	cps
Window 4	0.0	0.0	0.0	0.0	cps
Long Space	0.0	0.0	0.0	0.0	cps
Short Space	0.0	0.0	0.0	0.0	cps
Measured Rho		0.0000	0.0000	0.0000	g/cc
Measured Correction		0.0000	0.0000	0.0000	g/cc
Measured Pe			0.0000	0.0000	

After Survey Verification

Performed Wed Dec 31 18:00:00 1969

Window 1	0.0	0.0	0.0	0.0	cps
Window 2	0.0	0.0	0.0	0.0	cps
Window 3	0.0	0.0	0.0	0.0	cps
Window 4	0.0	0.0	0.0	0.0	cps
Long Space	0.0	0.0	0.0	0.0	cps
Short Space	0.0	0.0	0.0	0.0	cps
Measured Rho		0.0000	0.0000	0.0000	g/cc
Measured Correction		0.0000	0.0000	0.0000	g/cc
Measured Pe			0.0000	0.0000	

Compensated Neutron Calibration Report

Serial Number: 6I
Tool Model: G

CALIBRATION

Detector	Readings	Target	Normalization
Short Space	1.00 cps	1.00 cps	1.0000
Long Space	1.00 cps	1.00 cps	1.0000

PRE-SURVEY VERIFICATION

	Detector	Readings	Measured	Target
1)	Short Space	cps		
	Long Space	cps	pu	pu
2)	Short Space	cps		
	Long Space	cps	pu	
3)	Short Space	cps		
	Long Space	cps	pu	

POST-SURVEY VERIFICATION

	Detector	Readings	Measured	Target
1)	Short Space Long Space	cps cps	pu	pu
2)	Short Space Long Space	cps cps	pu	pu
3)	Short Space Long Space	cps cps	pu	pu

Gamma Ray Calibration Report

Serial Number:	GR6	
Tool Model:	OPEN	
Performed:	Wed Jan 25 05:13:23 2023	
Calibrator Value:	150.0	GAPI
Background Reading:	0.0	cps
Calibrator Reading:	276.0	cps
Sensitivity:	0.9000	GAPI/cps