



**MIDWEST SURVEYS**  
 LOGGING - PERFORATING - CONSULTING SERVICES  
 P.O. Box 68, Osawatomie, KS 66064  
 913 / 755 - 2128

**GAMMA RAY / NEUTRON / CCL**

File No. \_\_\_\_\_

Company **Colt Energy, Inc.**

Well **Fitzpatrick No.- 13**

Field **Iola**

County **Allen**

State **Kansas**

Location **1472 FSL & 835' FWL**

**SW-SE-NW-SW**

**Sec. 9**

**Typ. 24S**

**Rgs. 18a**

**Elevation 999'**

**Permament Datum GL**

**Log Measured From GL**

**Drilling Measured From GL**

**Date 01-31-2023**

**Run Number One**

**Depth Logger 1053.0**

**Bottom Logged Interval 1020.0**

**Top Log Interval 20.0**

**Fluid Level Full**

**Type Fluid Water**

**Density / Viscosity NA**

**Salinity - PPM Cl NA**

**Max. Recorded Temp NA**

**Estimated Cement Top NA**

**Equipment No. 107**

**Location Osawatimie**

**Recorded By Steve Winkisch**

**Witnessed By Wes Moors**

**Perforate**

**Other Services**

**K.B. NA**

**D.F. NA**

**G.L. 999'**

**Perforate**

**Other Services**

**K.B. NA**

BORE-HOLE RECORD				CASING RECORD			
Run No.	BIT	FROM	TO	SIZE	WGT	FROM	TO
One	12.25"	0.0	20.0	8.625"	28.0#	0.0	20.0
Two	6.75"	20.0	1053.0	4.50"	11.5#	0.0	1053.7
						Set	At

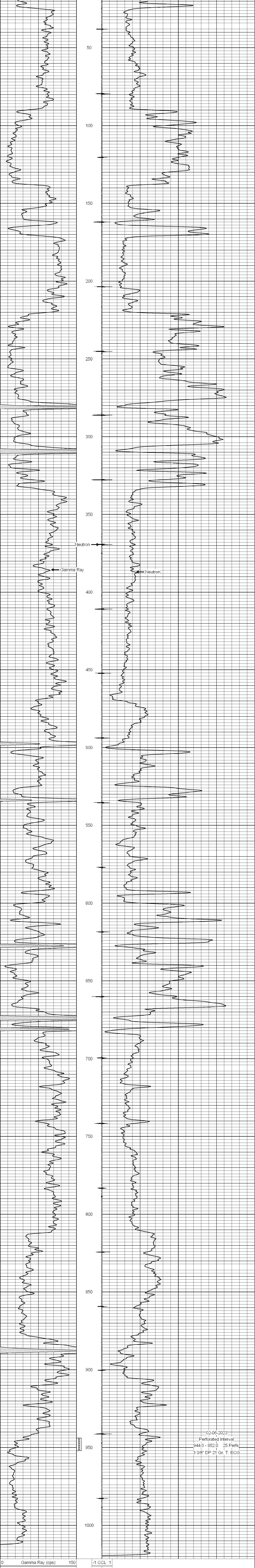
<<< Fold Here >>>

All interpretations are opinions based on inferences from electrical or other measurements and we cannot and do not guarantee the accuracy or correctness of any interpretation, and we shall not, except in the case of gross or willful negligence on our part, be liable or responsible for any loss, costs, damages, or expenses incurred or sustained by anyone resulting from any interpretation made by any of our officers, agents or employees. These interpretations are also subject to our general terms and conditions set out in our current Price Schedule.

**Comments**

Drilling Contractor :  
 Colt Energy, Inc.

Database File: fitzpatrick 13.db  
 Dataset Pathname: pass1  
 Presentation Format: gr-n-ccl  
 Dataset Creation: Tue Jan 31 12:15:49 2023 by Log SCH 111116  
 Charted by: Depth in Feet scaled 1:240



02-06-2023  
 Perforated Interval  
 944.0 - 952.0 25 Perfs  
 3 3/8" DP 21 Gr. T. ECG

BORE-HOLE RECORD				CASING RECORD			
Run No.	BIT	FROM	TO	SIZE	WGT	FROM	TO
One	12.25"	0.0	20.0	8.625"	28.0#	0.0	20.0
Two	6.75"	20.0	1053.0	4.50"	11.5#	0.0	1053.7
						Set	At