



Sensor	Offset (ft)	Schematic	Description	Length (ft)	O.D. (in)	Weight (lb)
GR	14.50		GR-M&W (89-M&W)	3.00	3.50	50.00
LGRD	11.00		LGRD-M&W (49) Simlec Long Guard	3.50	3.50	40.00
SCAL	5.10		SWN-M&W-SP (139-130)	10.50	4.00	190.00
SWN	4.45					
SP	0.20					

Dataset: staab\_haines 1.db: field/well/rag/pass3.1  
 Total length: 17.00 ft  
 Total weight: 280.00 lb  
 O.D.: 4.00 in



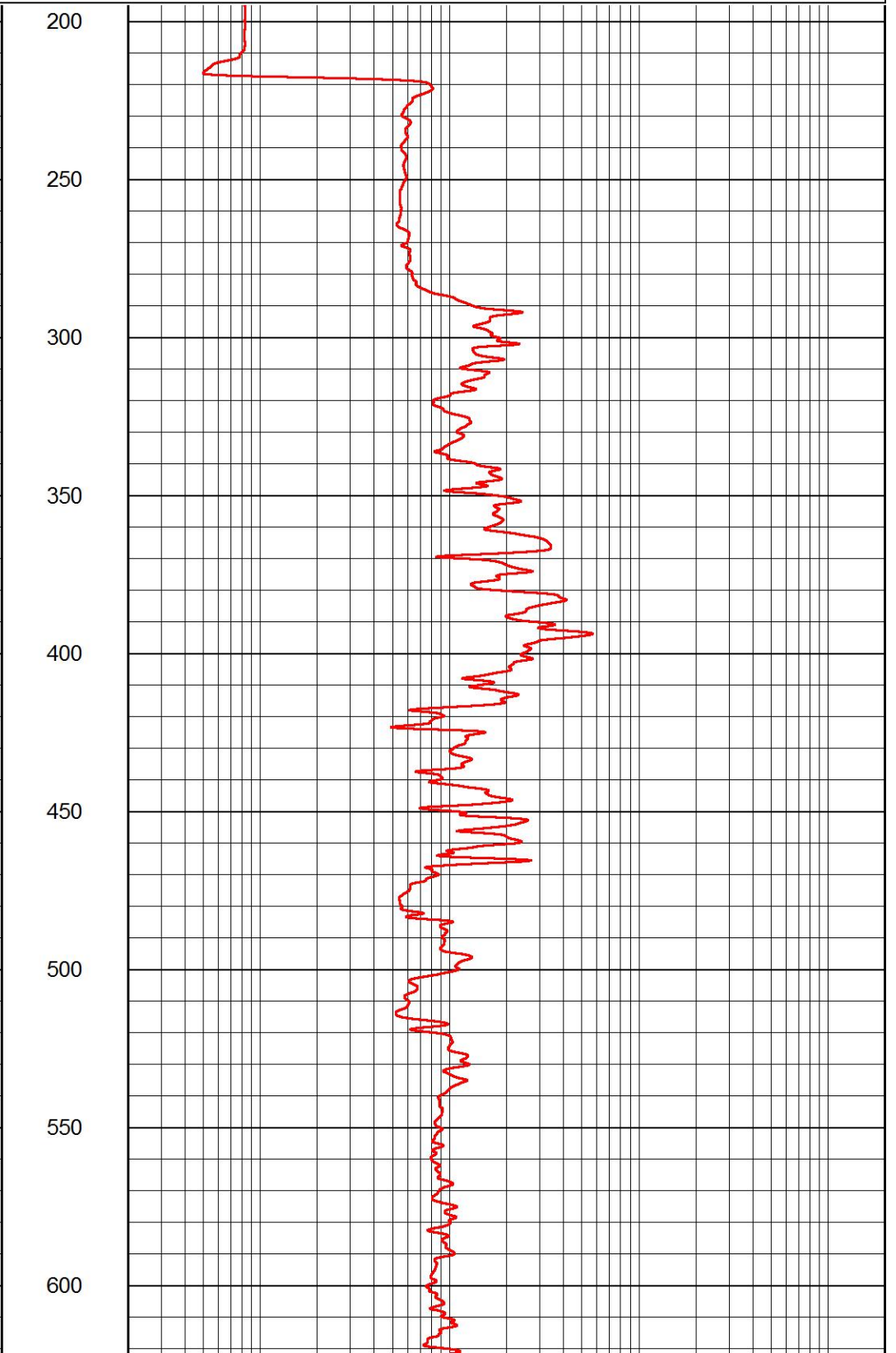
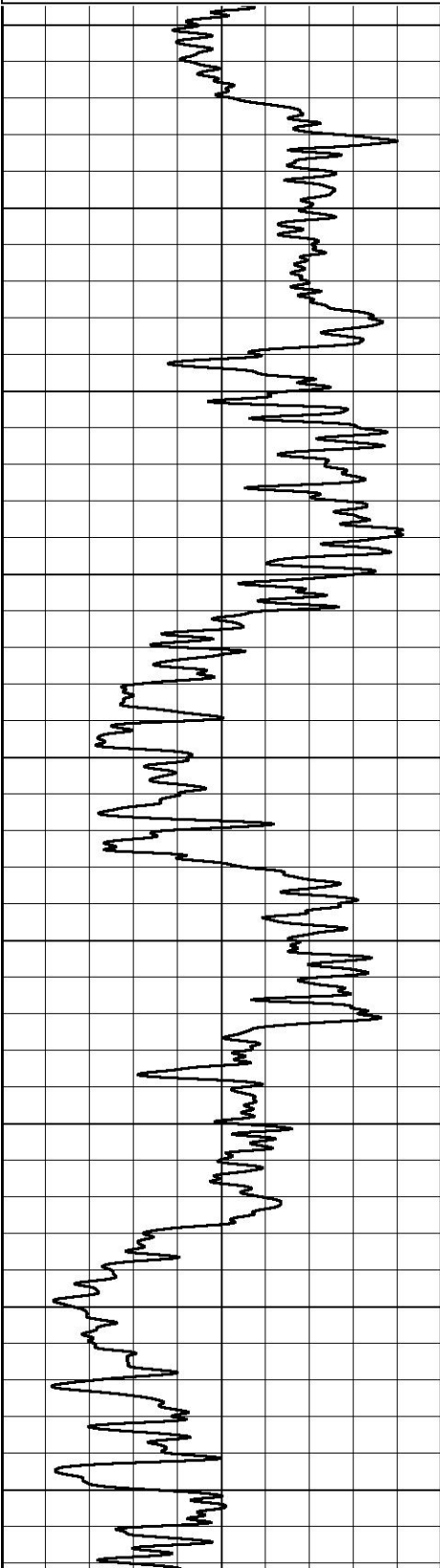
# 2" RESISTIVITY

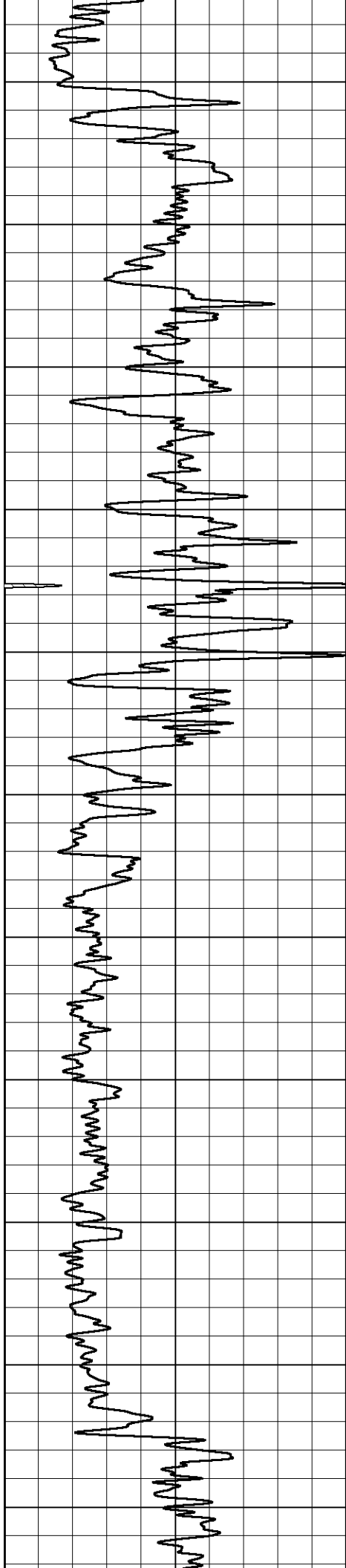
## MAIN PASS

Database File      staab\_haines 1.db  
Dataset Pathname    rag/pass3.32  
Presentation Format   rag2in  
Dataset Creation    Tue Dec 06 01:24:44 2022  
Charted by          Depth in Feet scaled 1:600

0      GAMMA RAY (GAPI)      150

0.2      LONG GUARD (Ohm-m)      2000





650

700

750

800

850

900

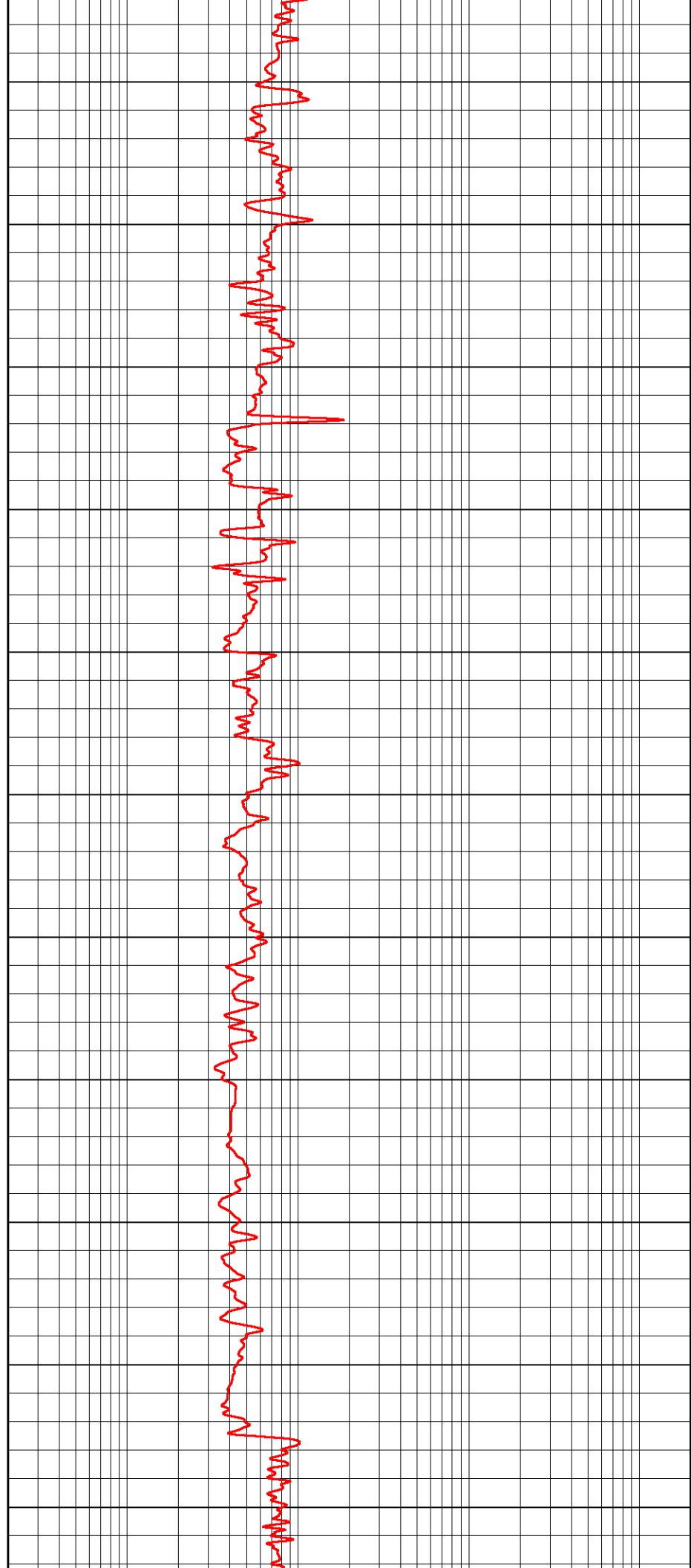
950

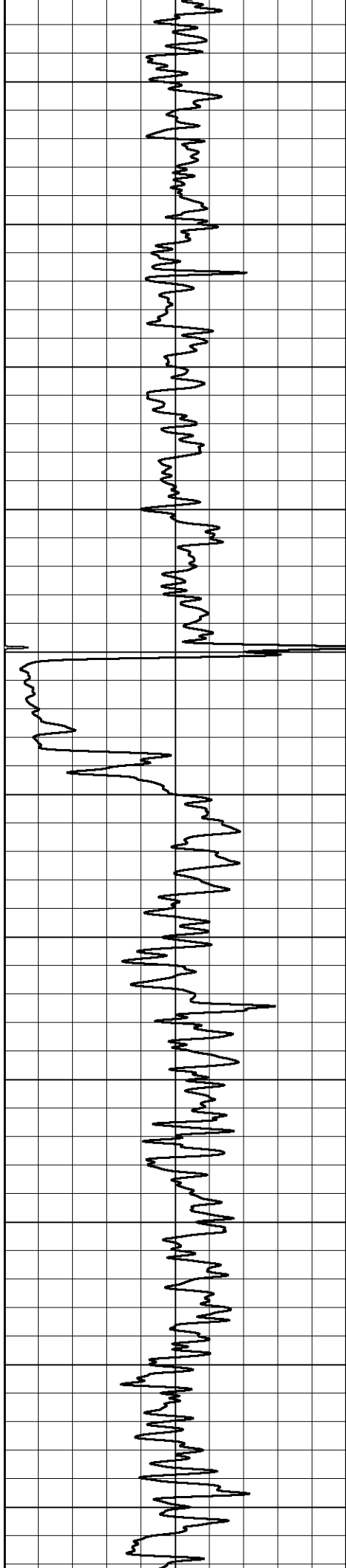
1000

1050

1100

1150





1200

1250

1300

1350

1400

1450

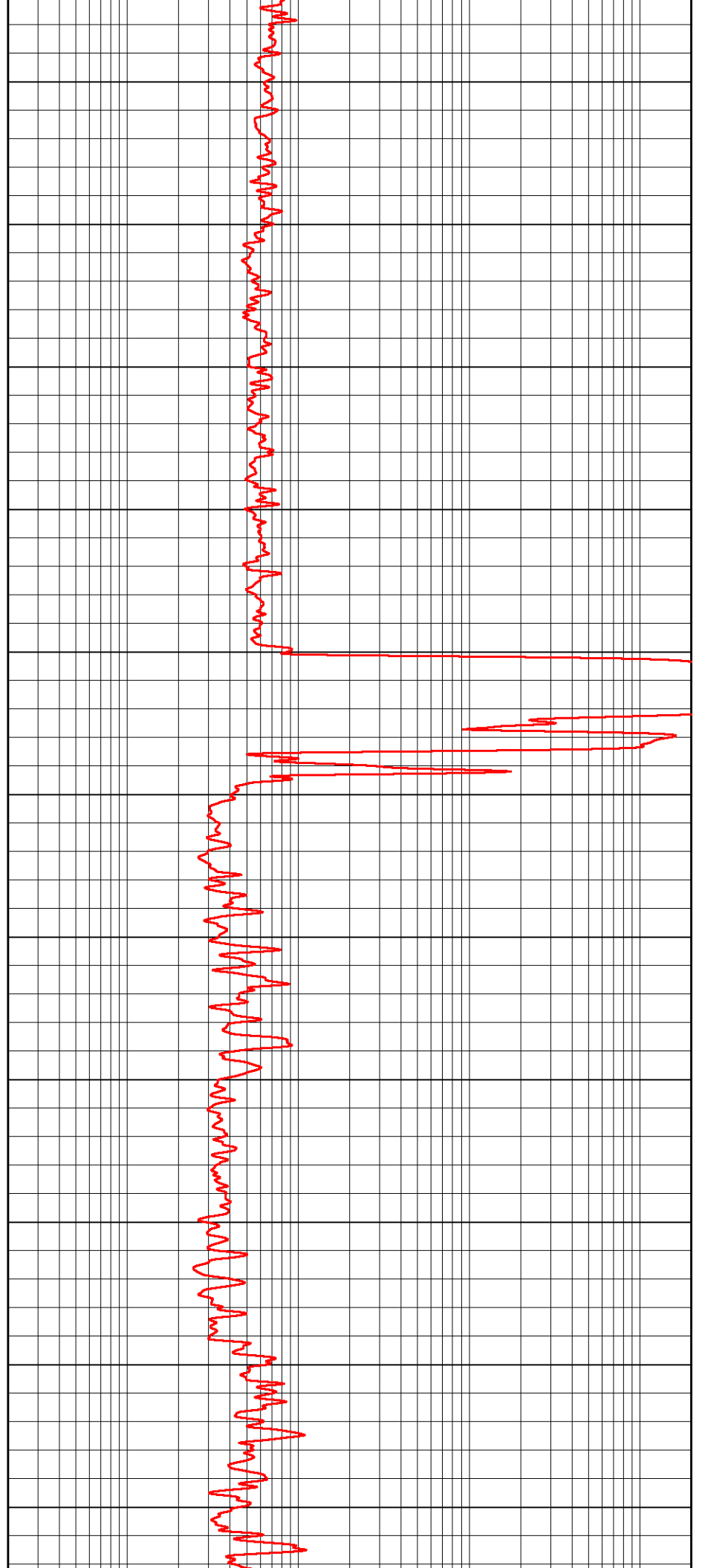
1500

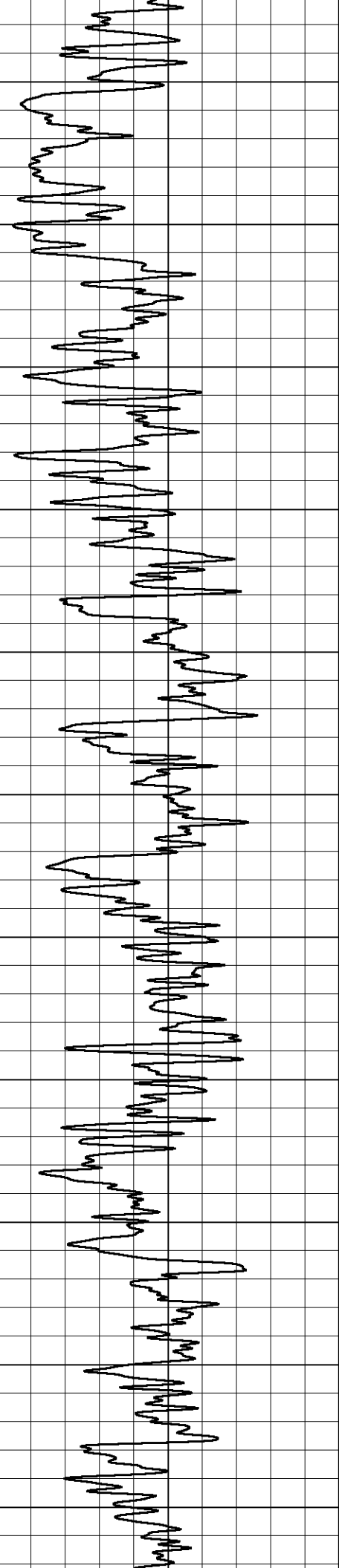
1550

1600

1650

1700





1750

1800

1850

1900

1950

2000

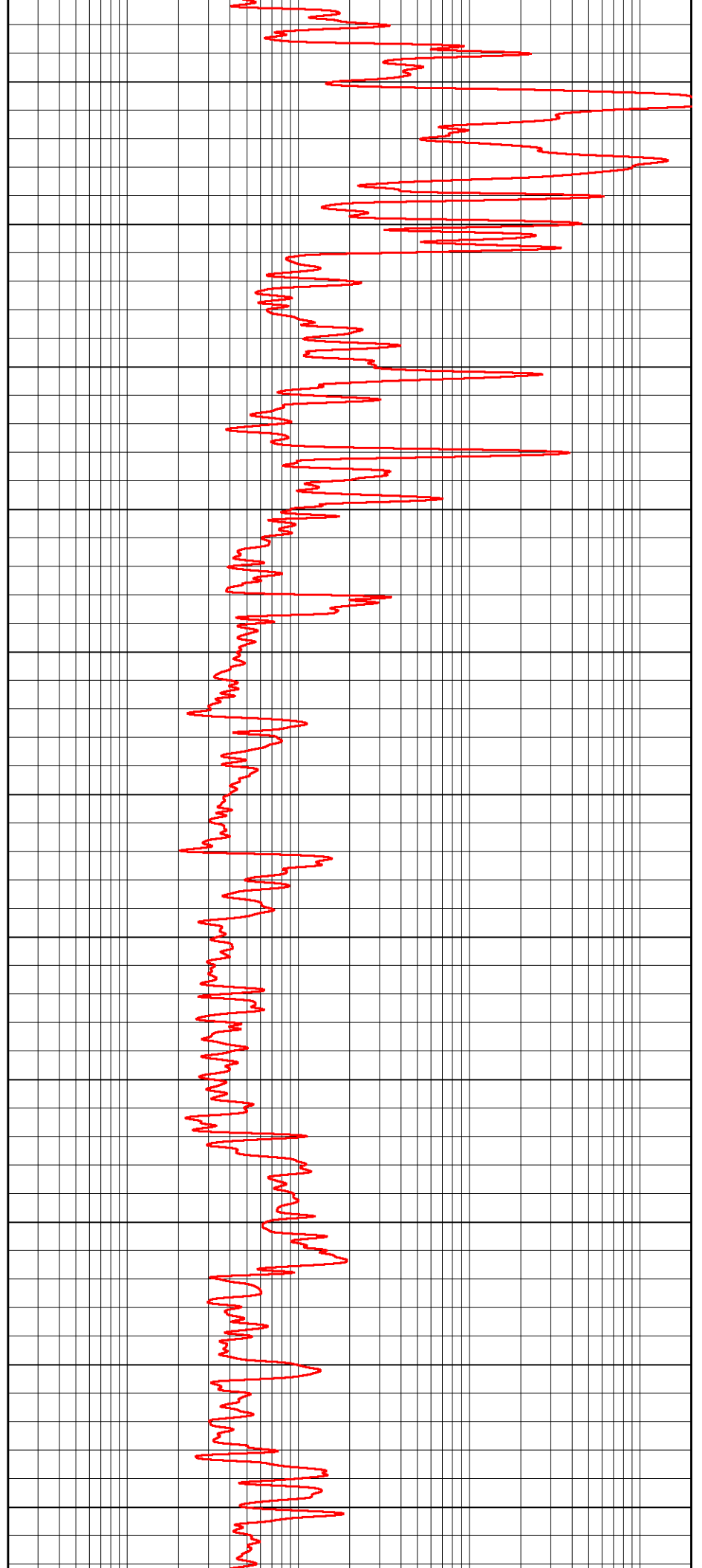
2050

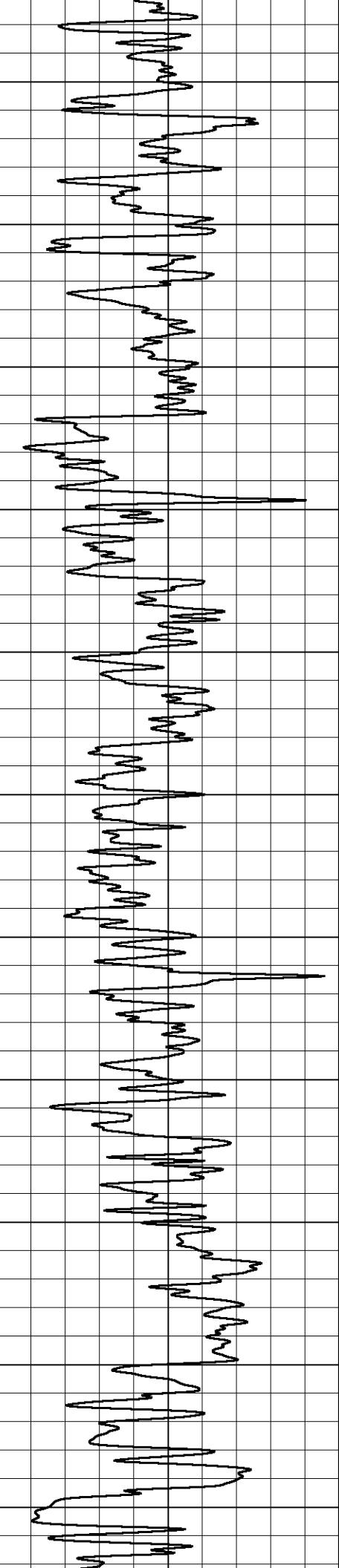
2100

2150

2200

2250





2300

2350

2400

2450

2500

2550

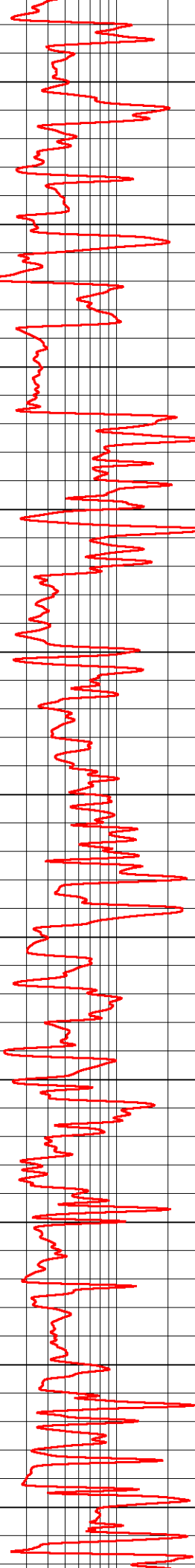
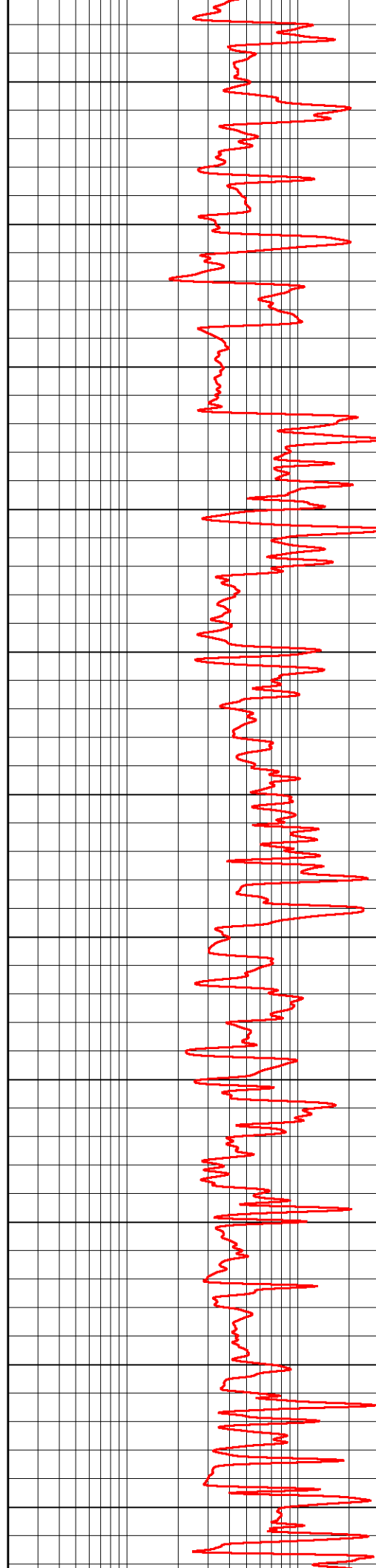
2600

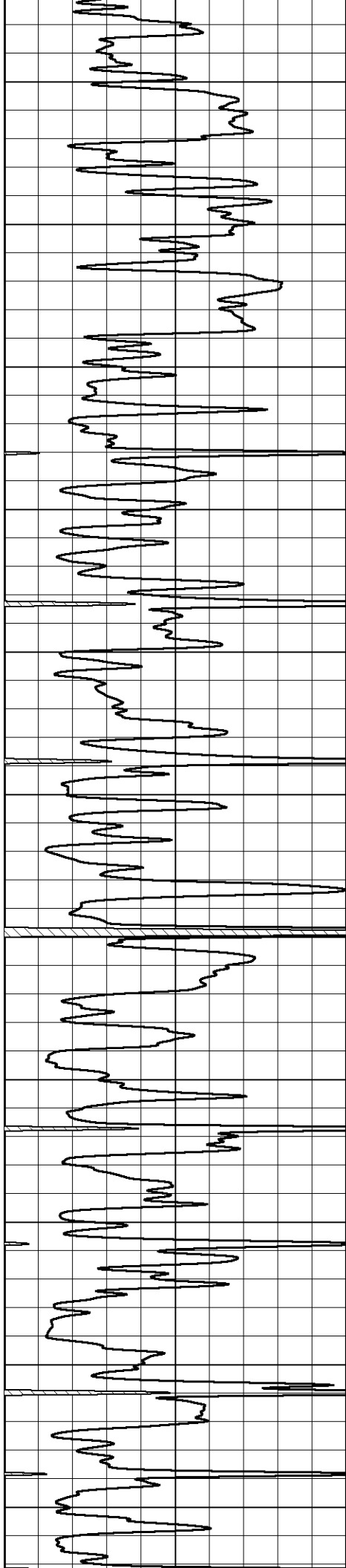
2650

2700

2750

2800





2850

2900

2950

3000

3050

3100

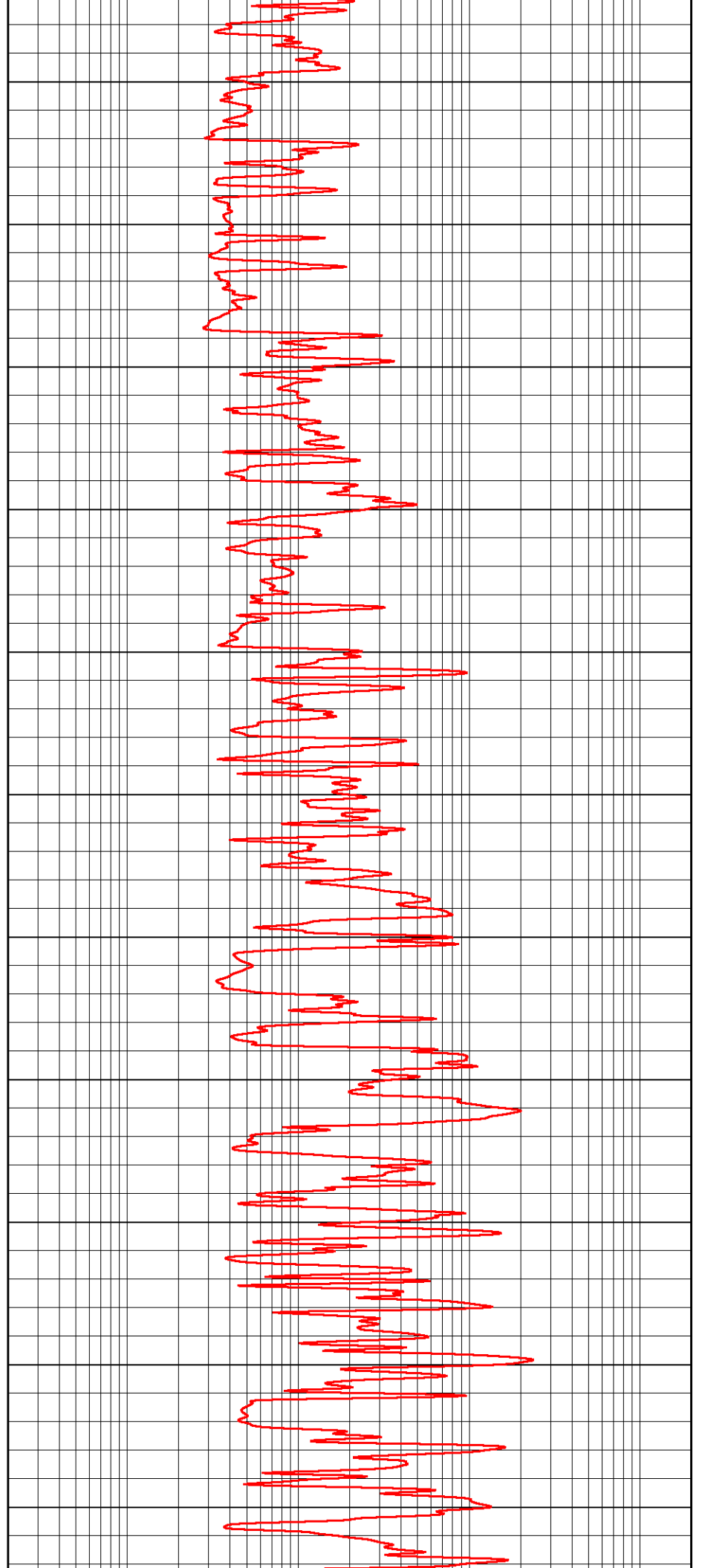
3150

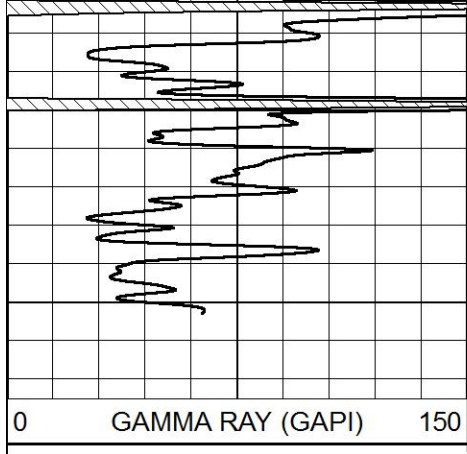
3200

3250

3300

3350

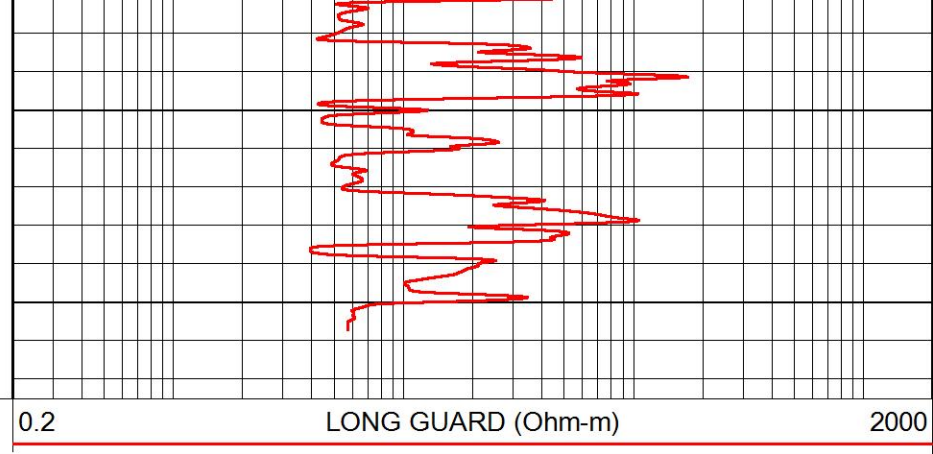




3400

3450

0 GAMMA RAY (GAPI) 150



0.2

LONG GUARD (Ohm-m)

2000



MIDWEST WIRELINE

# ANHYDRITE SECTION

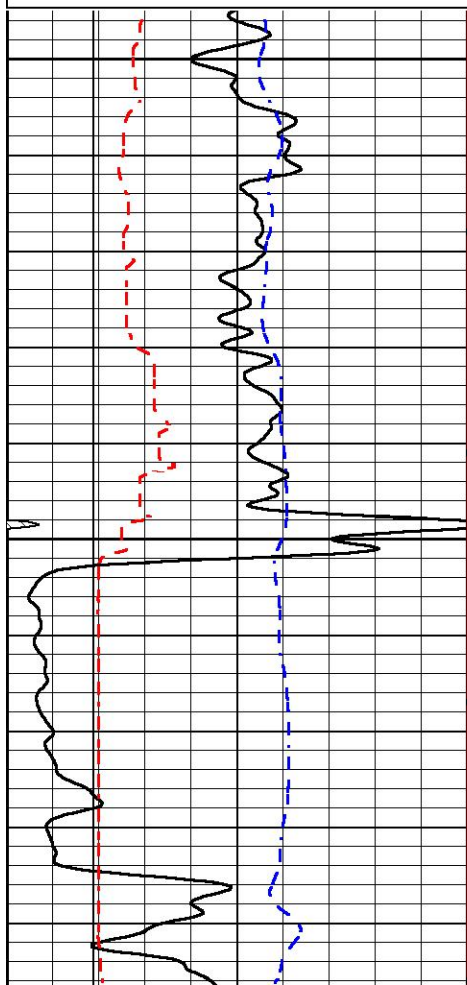
## MAIN PASS

Database File staab\_haines 1.db  
 Dataset Pathname rag/pass3.3  
 Presentation Format rag  
 Dataset Creation Tue Dec 06 01:28:14 2022  
 Charted by Depth in Feet scaled 1:240

0	GAMMA RAY (GAPI)	150
6	CALIPER (in)	16
6	BIT SIZE	16
-200	SP (mV)	0

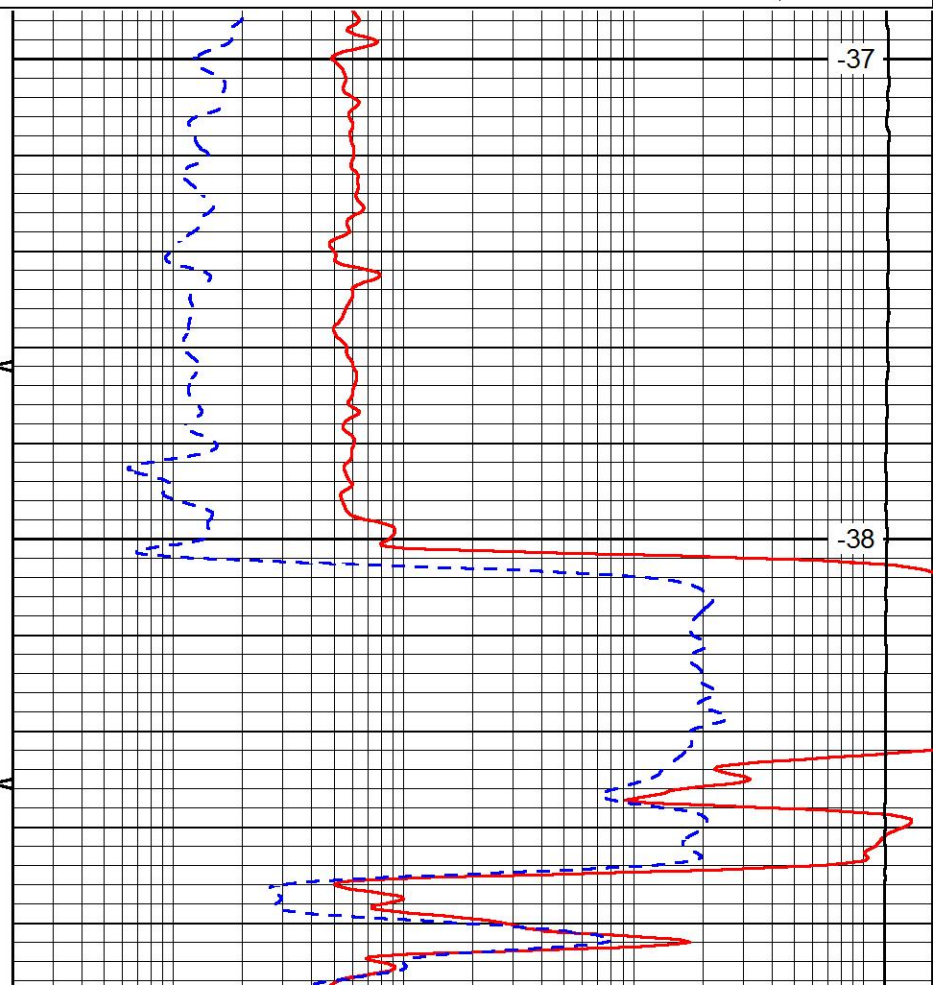
0.2	LONG GUARD (Ohm-m)	2000
560	SIDE WALL NEUTRON POROSITY (NAPI)	2160
15000	LINE TENSION (lb)	0

LSPD  
(ft/min)



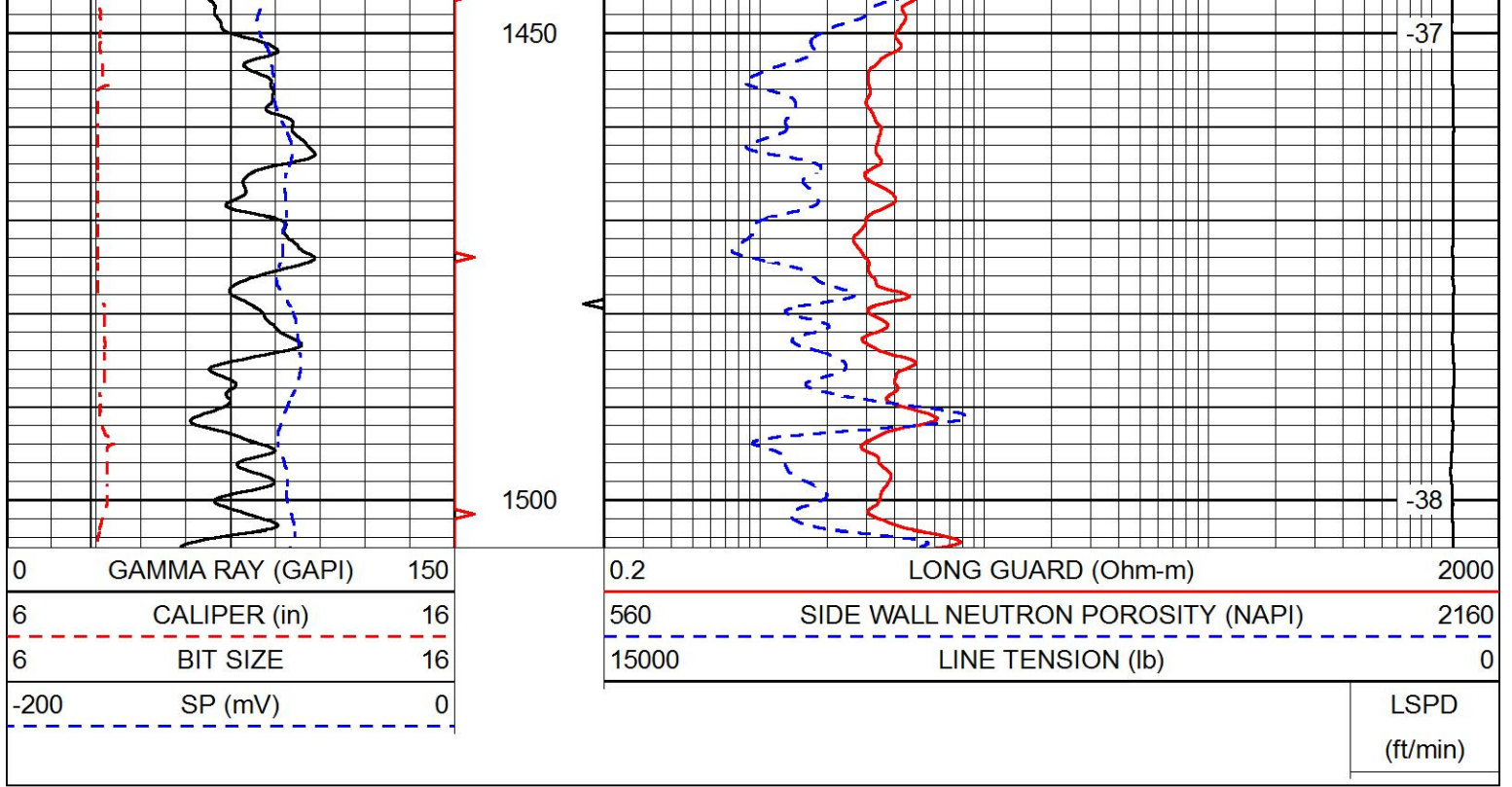
1350

1400



-37

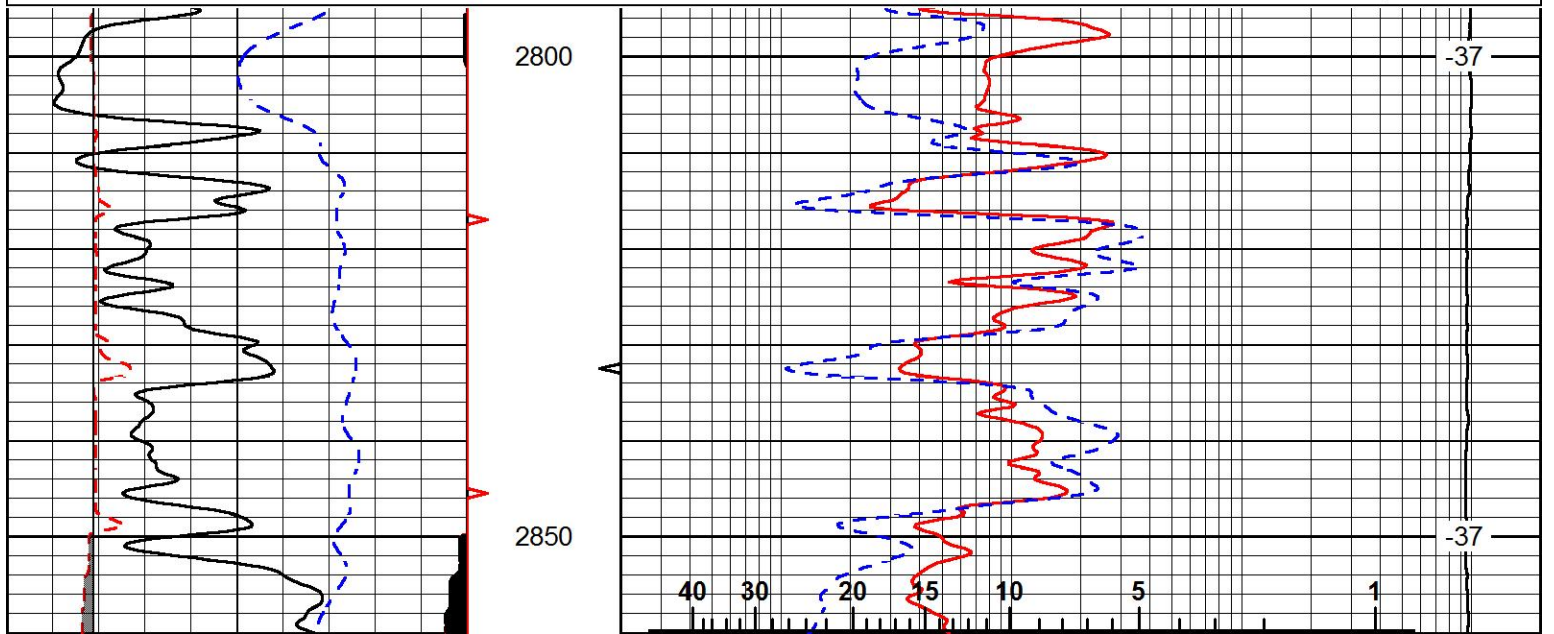
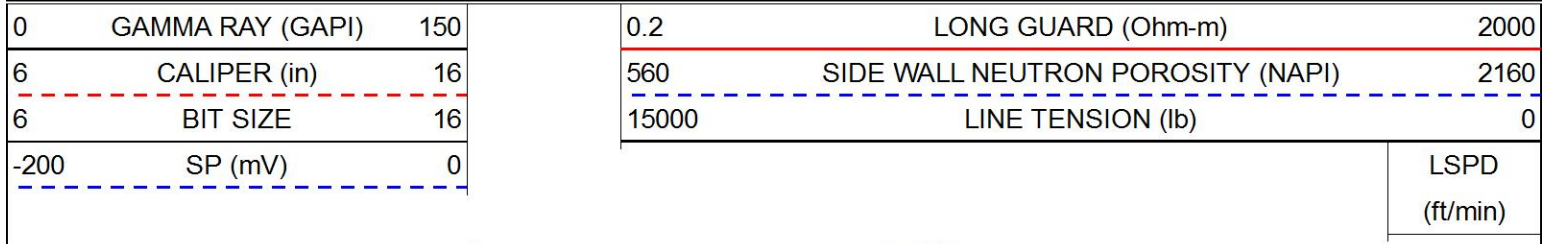
-38



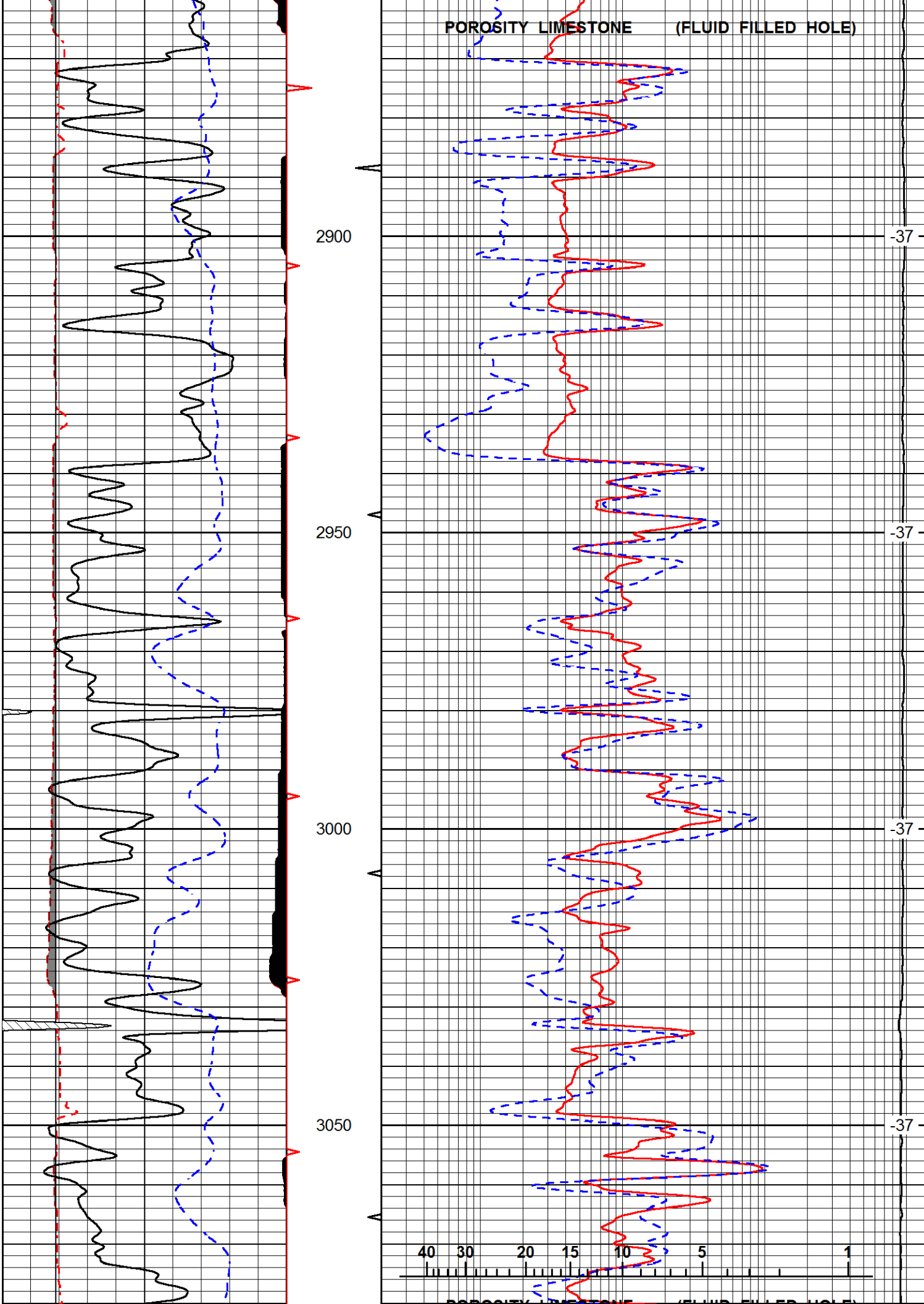
## DETAIL SECTION

### MAIN PASS

Database File      staab\_haines 1.db  
 Dataset Pathname    rag/pass3.1  
 Presentation Format   rag  
 Dataset Creation    Tue Dec 06 01:26:50 2022  
 Charted by          Depth in Feet scaled 1:240

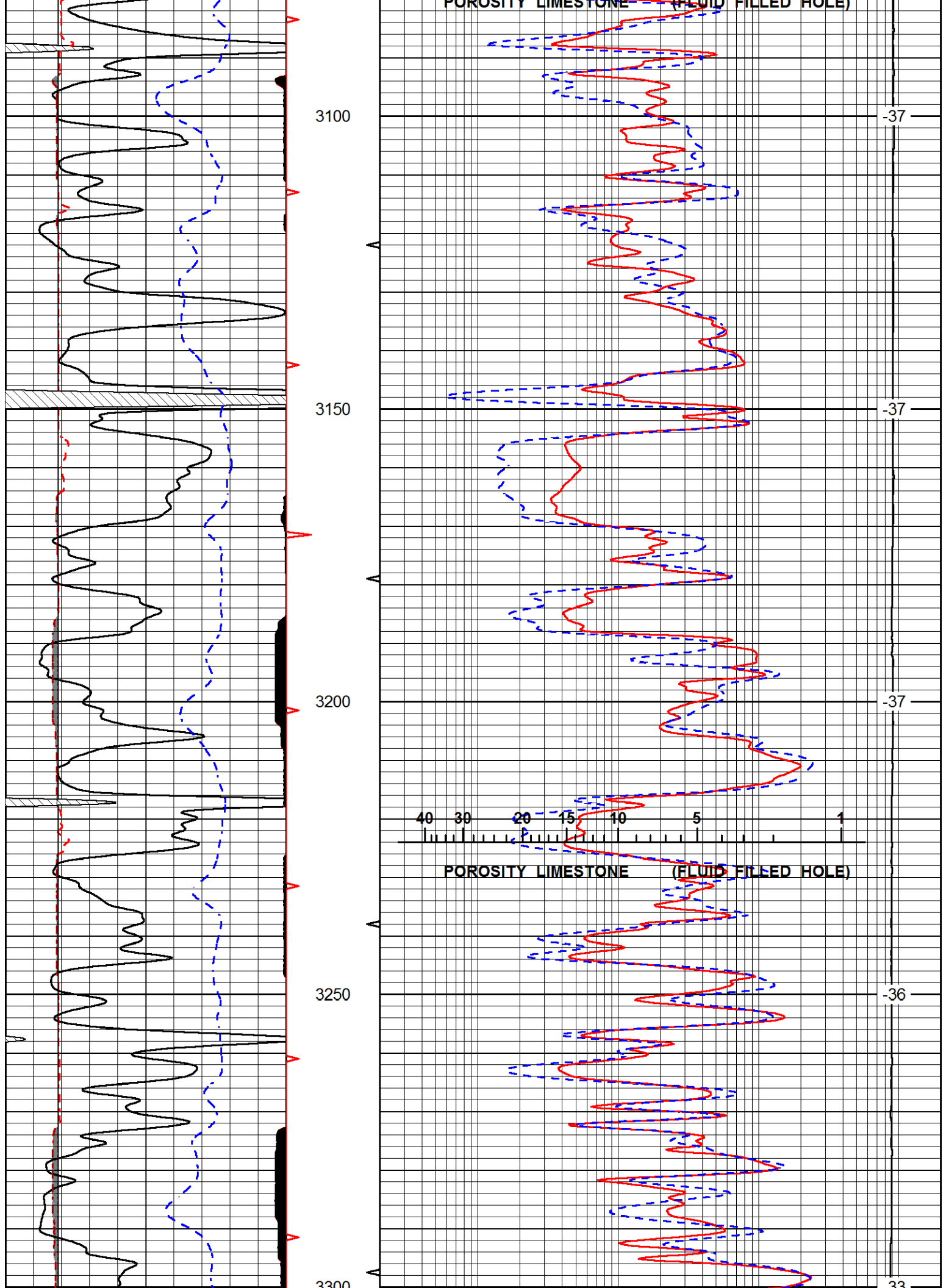


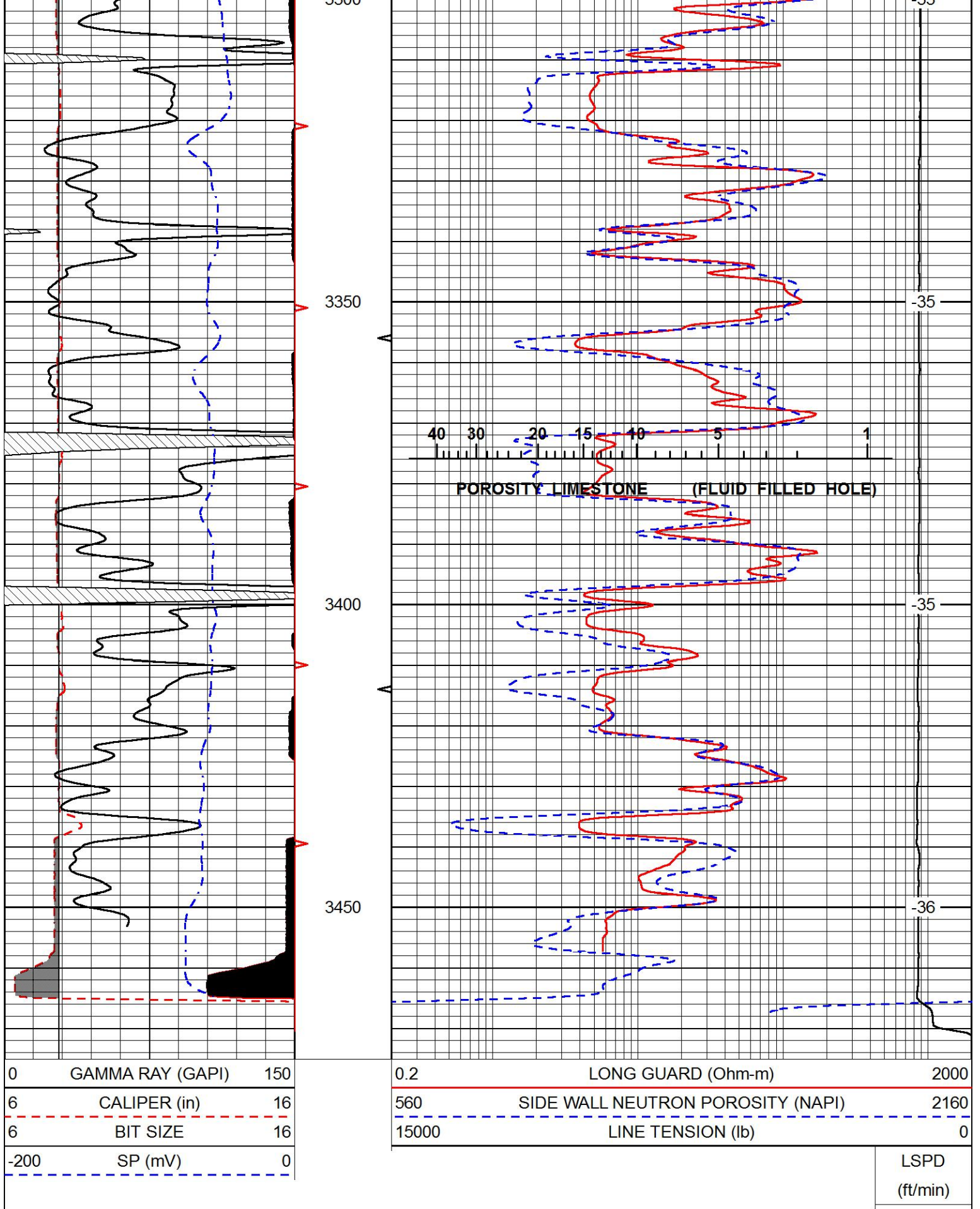
POROSITY LIMESTONE (FLUID FILLED HOLE)



40 30 20 15 10 5 1

POROSITY LIMESTONE (FLUID FILLED HOLE)





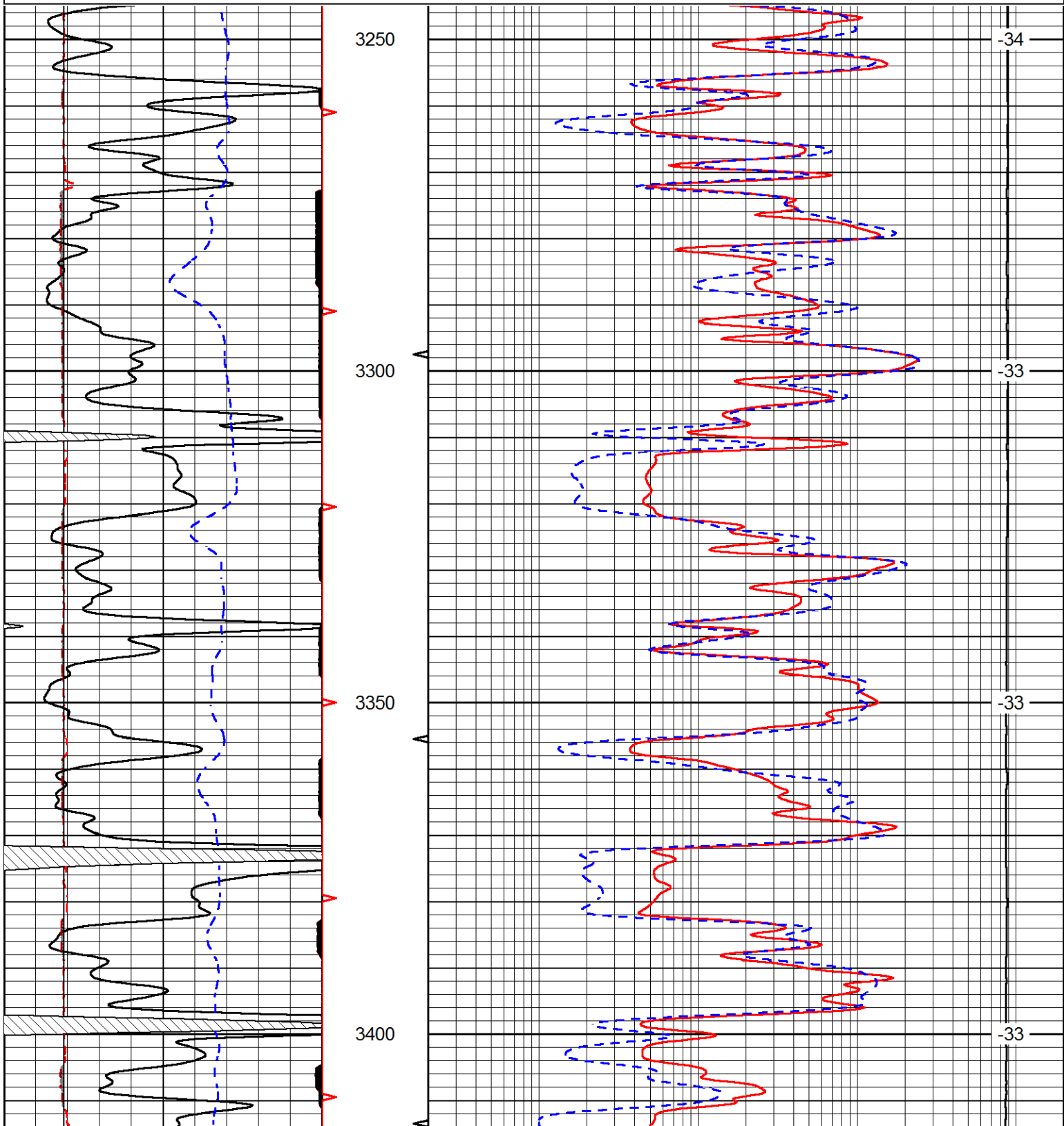
REPEAT SECTION

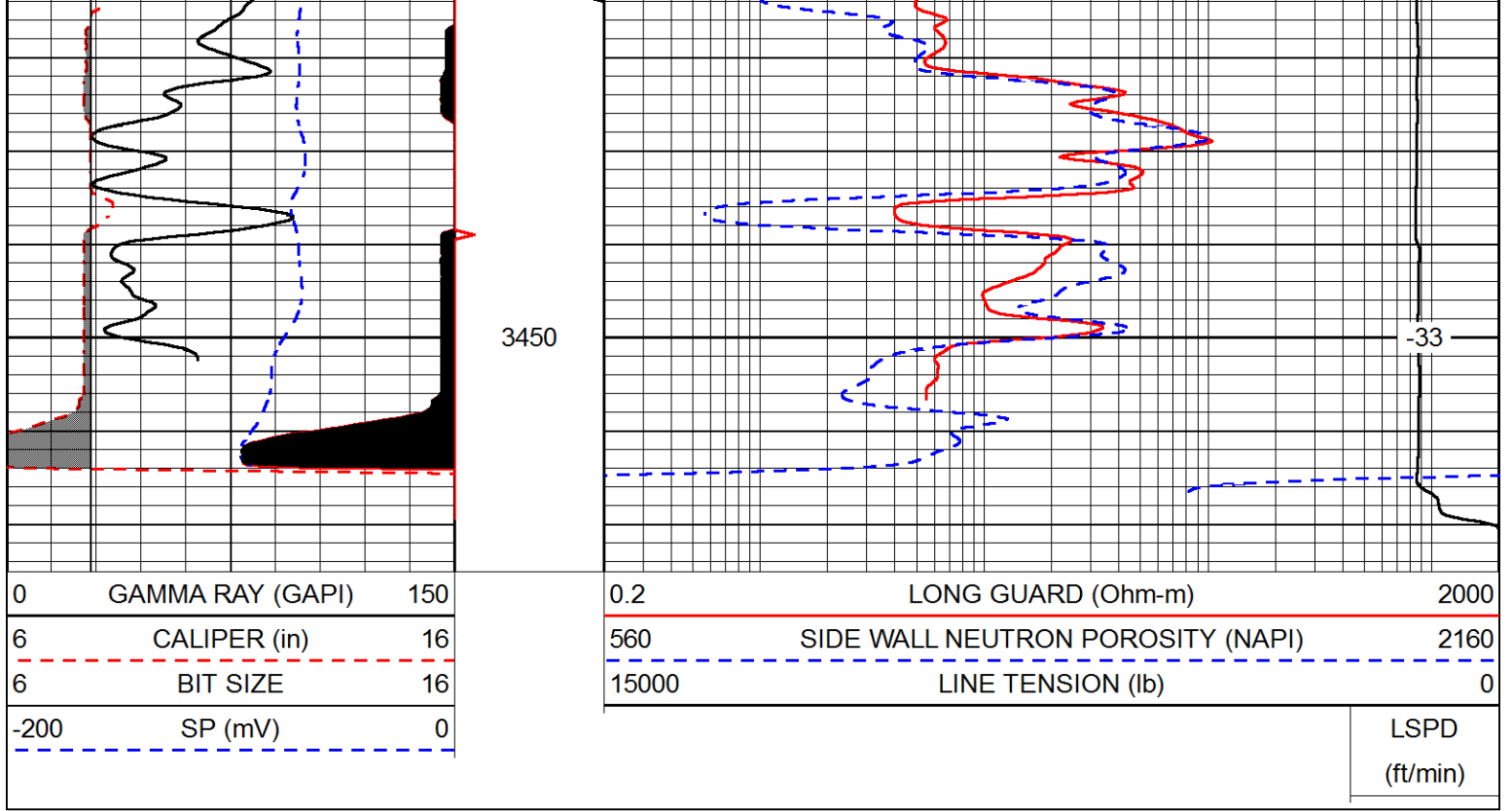
REPEAT PASS



Database File staab\_haines 1.db  
 Dataset Pathname rag/pass2.10  
 Presentation Format rag  
 Dataset Creation Tue Dec 06 01:16:52 2022  
 Charted by Depth in Feet scaled 1:240

0	GAMMA RAY (GAPI)	150	0.2	LONG GUARD (Ohm-m)	2000
6	CALIPER (in)	16	560	SIDE WALL NEUTRON POROSITY (NAPI)	2160
6	BIT SIZE	16	15000	LINE TENSION (lb)	0
-200	SP (mV)	0			LSPD (ft/min)





### Calibration Report

Database File staab\_haines 1.db  
 Dataset Pathname rag/pass3.1  
 Dataset Creation Tue Dec 06 01:26:50 2022

### Sidewall Neutron Calibration Report

Serial Number: 139-130  
 Tool Model: M&W-SP

SWN Calibration Tue Aug 30 16:14:50 2016

Readings	Target	Normalization
2566.42 cps	1085.00 cps	0.5350

Caliper Calibration Tue Aug 30 16:14:50 2016

Readings	Reference	Gain	Offset
0.84	4.00	-18.87	18.65
0.31	14.00		

### Gamma Ray Calibration Report

Serial Number: 89-M&W  
 Tool Model: M&W  
 Calibration Performed: Mon May 10 06:44:25 2021

Calibrator Value: 1000.0 GAPI

Background Reading:	0.0	cps
Calibrator Reading:	6.2	cps

Sensitivity: 0.5350 GAPI/cps



Company Staab Oil Company



Well	Haines #1
Field	
County	Rooks
State	Kansas